

Final Ratification Sarah Wedemanna and others
Edward Beard and others

N^o 3894 Equity
In the Circuit Court for Frederick County in Equity.

Ordered by the Court this 20th day of December 1868
that the Report of sales as made in said cause be ratified and confirmed, no cause
to the contrary having been shown although due notice appears to have been given by
publication of the Order nisi, and it is further ordered that this cause be referred to the
Auditor to state an account, and that the Trustees be allowed such expenses as they shall
produce vouchers therefor, and the usual Chancery Commissions ~
Filed Dec^r 20th 1868 ~

John A. Lynch
Judge of the Circuit Court

Exhibit B. to
Trustee's Report

Division of part of a tract of land called "The Resurvey, on Back City," which was
on the 15th day of December 1844, deeded by John DeGrange, Trustee, to Abraham Beard
and subsequently acquired by Peter Beard, now deceased, and now to be sold
for the benefit of his heirs. ~

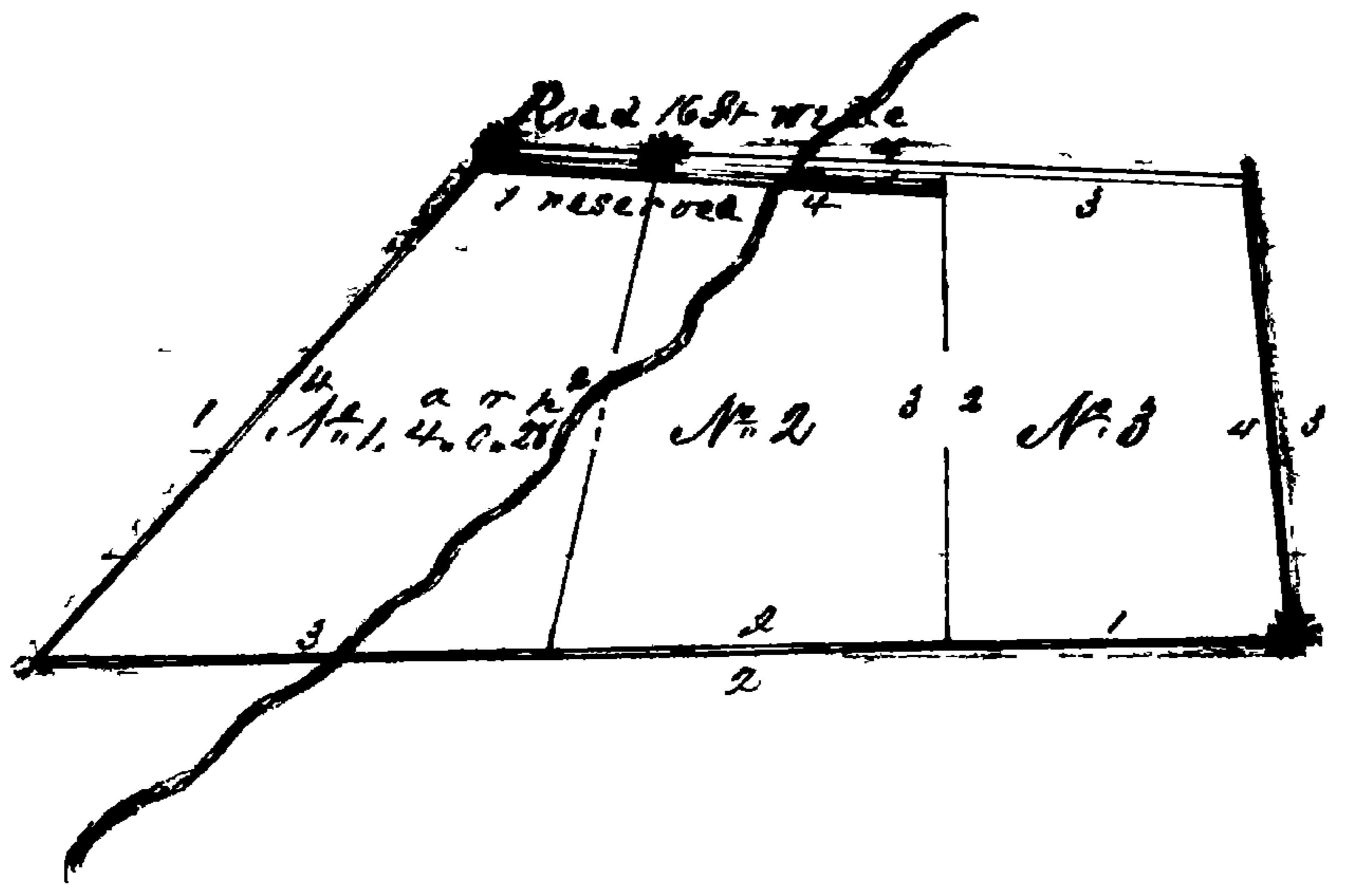
Lot N^o 1 Beginning at a planted stone at the end of the 13th line of the whole tract
called, "The Resurvey on Back City," it also being the beginning of the deed from John
DeGrange, trustee, to Abraham Beard, aforesaid, and running thence by and with
the 4th and closing line of said deed reversed S. 4^o W. 9^o 7/10 ps. to a stake, then N. 76^o
W. 3 1/4 ps. to the end of thirty three and one fourth ps., on the 2nd line of the deed aforesaid,
then with said 2nd line reversed North 33 1/10 ps. to a stone planted at the end of
the 1st line of said deed, still S. 48^o E. 48 1/2 ps. to the place of beginning containing
2 1/2 acres and 28 square perches, including a road 16 ft wide on 1st line reversed. ~

Lot N^o 2. Beginning at the end of the first line of Lot N^o 1 and running thence
with the 2nd line of Lot N^o 1. N. 76^o W. 3 1/4 ps to the end of 33 1/10 ps. on the 2nd line of the
deed from John DeGrange, Trustee, to Abraham Beard, aforesaid, then with said
2nd line, South 25 ps to a stake, then N 80 1/4^o E 29 7/10 ps to a stake at the end of 20 ps. on the
4th and closing line of the deed from John DeGrange, aforesaid, then with said
4th line N. 4^o E 18 ps to the beginning, containing 4 1/2^{ac} 0^{sq} 0^{sq} 7^{sq}, with road on N^o 1. ~

Lot N^o 3. Beginning at a stone planted at the end of the 2nd line of the deed from
John DeGrange, Trustee, to Abraham Beard, aforesaid, and running thence with said
2nd line reversed North 21 ps. to the end of the 2nd line of Lot N^o 2. then with the 3rd line
of Lot N^o 2. N 85 1/4^o E 29 7/10 ps. to the end of 20 ps on the 4th line of the deed from John
DeGrange, aforesaid, then with said 4th line reversed S 4^o W 20 ps. to the end of the 3rd line
thereof, then with said 3rd line reversed, S. 84^o W. 28 1/10 ps. to the beginning 3 1/2^{ac} 3^{sq} 8^{sq} 7^{sq}, returning
to this lot, a road 16 ft wide on the 1st line of N^o 1 and 4th line of N^o 2. ~

Surveyed Oct. 10th 1868 per.

Thos. H. O'Neal



Scale of 20 ps. &c

Filed Nov 20th 1868 ~