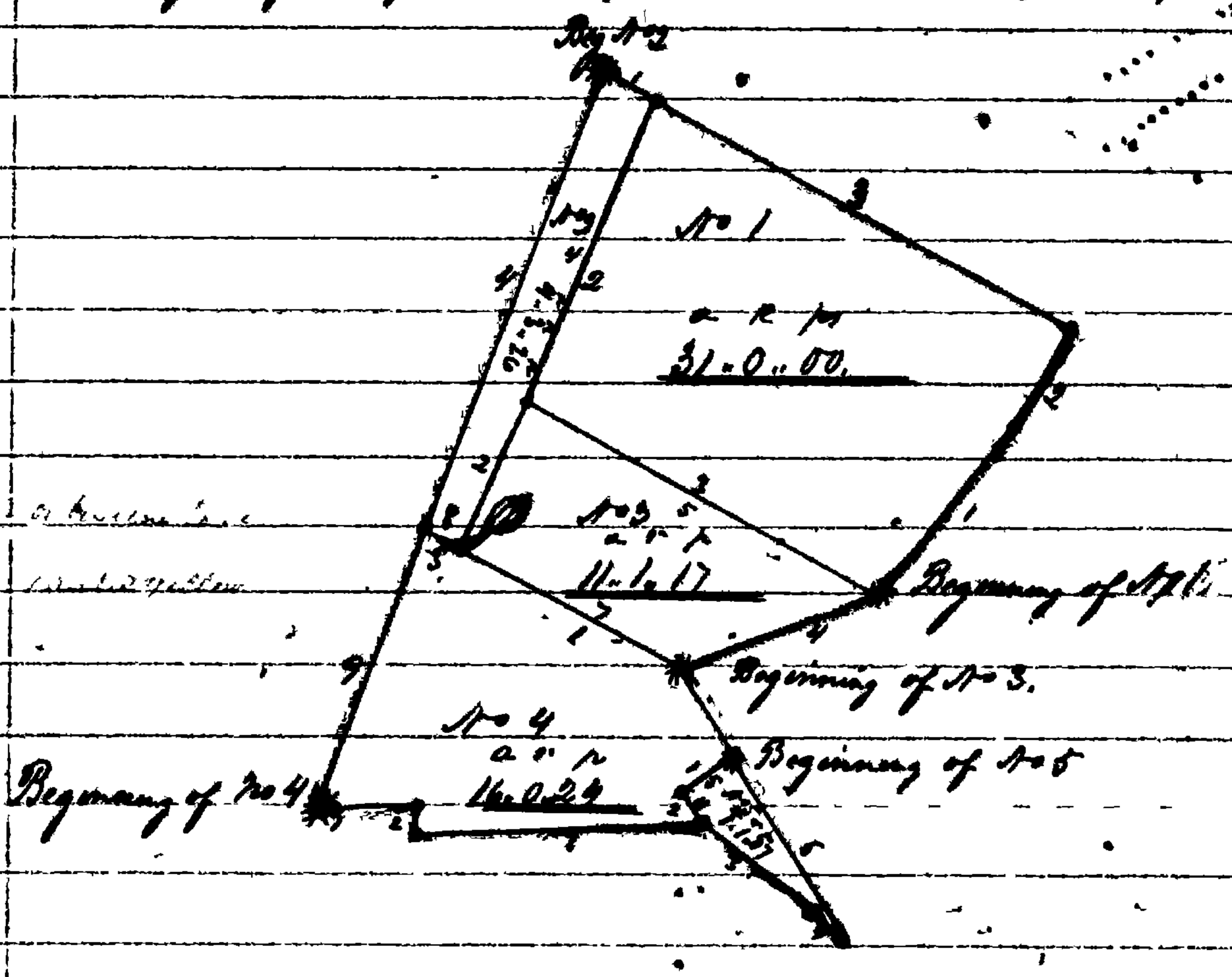


apart, then with the 2nd line of said tract, with such correction as is found necessary, to agree with the former survey thereof, S 69 1/2° W 40 p^{er} to the place of beginning containing 11 acres, 1 rood and 17 square perches.

Lot No 4. Beginning at a stake and pile of stones at the end of the 2nd line of the whole tract called "Keyall" for 97 acres, deduced the 10th day of March 1794 by Charles Peatty to John Ellis & others, and running thence with the said 97 acres parcel 3 courses and distances, allowing 2 1/2' for variation, viz: S 87 1/2° E 12 p^{er}, S 6 1/2° W 5 p^{er} & 54 p^{er} to a stake and pile of stones, then N 39 1/4° W 6 1/2 p^{er} to a stake and pile of stones, S 54 1/2° E 11 p^{er} to a stake and pile of stones in the 1st line of the 97 acres deed aforesaid, then with said 1st line, allowing such correction as is necessary to agree with the former survey and call thereof, N 30 1/2° W 19 1/2 p^{er} to a stone firmly planted at the end of the 2nd line of a tract of land called "The Recovery on Mountain", it also being the beginning of Lot No 3, then with the 1st line of Lot No 3, N 62° W 45 1/2 p^{er} to small chestnut tree marked with white 12 stakes and two blags, at the end of the 2nd line of Lot No 2, then with the 2nd line of said Lot No 2, N 62° W 7 p^{er} to a stake and pile of stones in the 7th line of the 97 acres deed aforesaid, then with said 7th line to the place of beginning containing 16 acres, 29 square p^{er}ches.

Lot No 5. Beginning at a stake and pile of stones at the end of the 5th line of Lot No 4, and running thence with the line of No 4 across a tree course and distances S 54 1/2° W 11 p^{er} to a stake and pile of stones, S 39 1/4° E 6 p^{er} to a stake and pile of stones, then S 51 1/2° E 26 p^{er} to a stake, S 36° E 7 1/2 p^{er} then by a straight line to the place of beginning containing 1 acre, 1 rood and 7 square perches.

Thos H. O'Neal, Surveyor
June 1862.



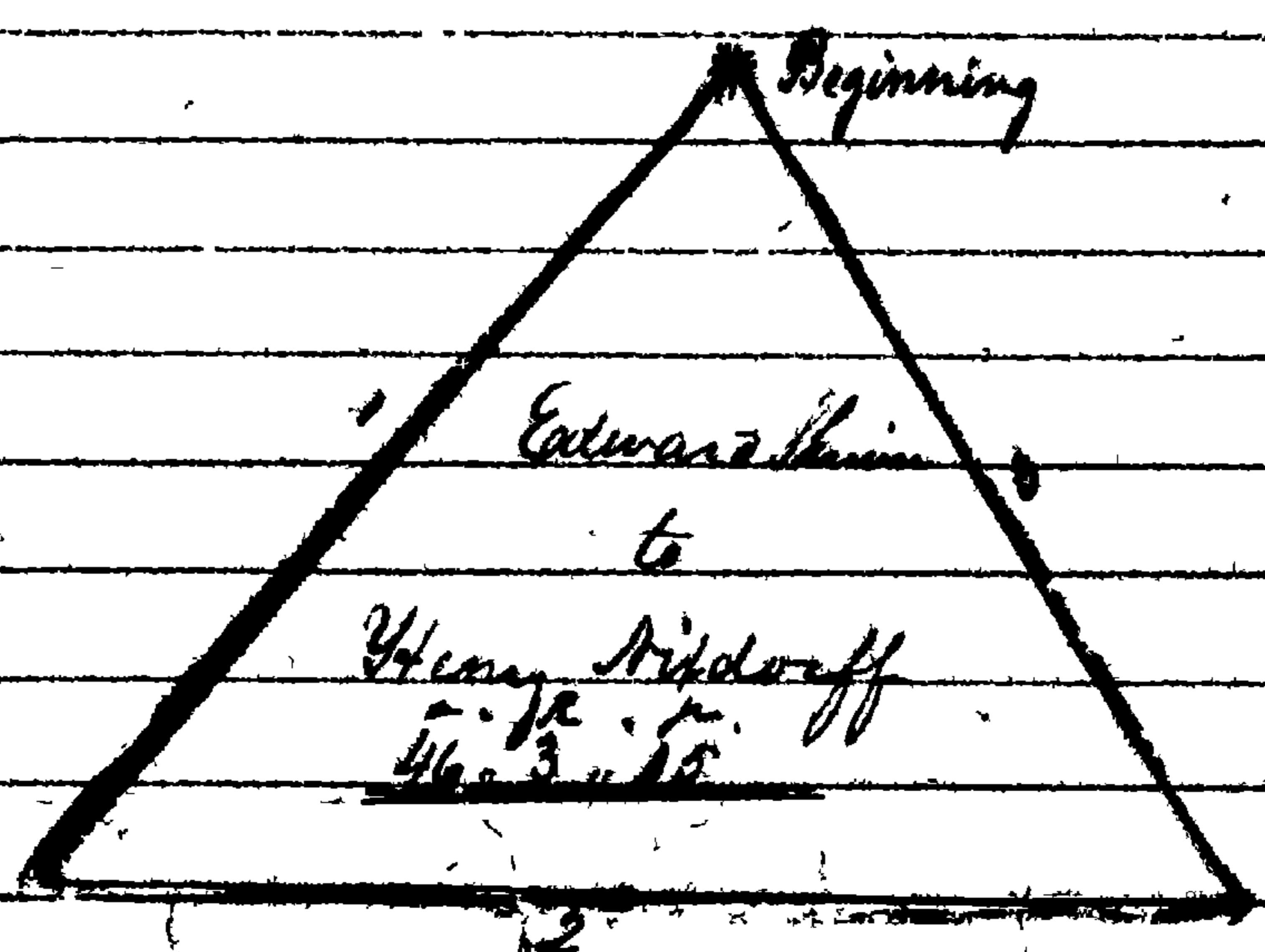
Scale of 40 p^{er} to an inch

Exhibit S. 94 "Fieldman"

At the request of Lewis M. and Henry M. Bridgoff, Executors for the sale of the Real Estate of Henry Bridgoff late of Frederick County, deceased, I have carefully surveyed the following described part of a tract of land called "Fieldman", deduced the 12th day of September 1852, by John M. Shuman, Trustee, to Henry Bridgoff for 47 1/2 acres.

Beginning for the said parcel of land at a stone planted at the end of 95 p^{er} in the 180th line of the whole tract called "Fieldman", and running thence with the said 180th line as the same was formerly surveyed and bounded by an allowance of 1' for variation, on the line of said land S 7° W 129 p^{er} to a heap of stones at the end of 25 p^{er} on a line drawn S 60° W from the end of the 178th line of said whole tract called "Fieldman", then with said line reversed N 60° E 144 p^{er} to a stake, N 62° W 124 p^{er} to the place of beginning containing 46 acres, 3 rods, & 05 square perches.

Thos H. O'Neal, Surveyor
June 1862.



Scale of 40 p^{er} to an inch