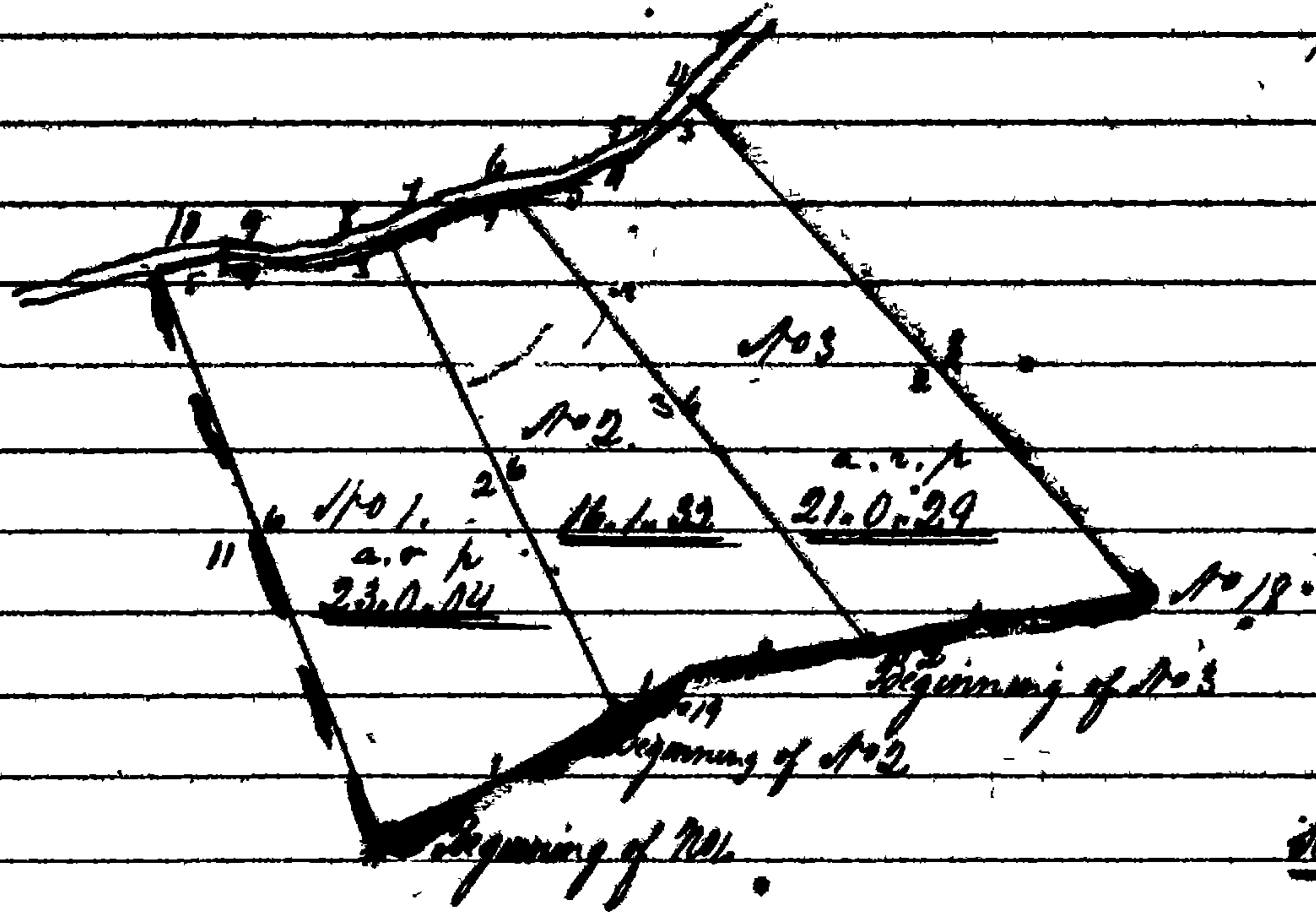


at the end of said 1st line, then with the 2^d line of said whole parcel, covering as aforesaid, 179^o 60' 30" to a stake and pile of stones
then at 277^o 71 1/2' to a stake and pile of stones at the end of the 6th or 767^o 71 1/2' line of the whole deed aforesaid, for 60 acres, being on the old Sunnyside,
then with said road and with the said whole parcel ten acres, covering as aforesaid, 277^o 71 1/2' to a stake and pile of stones at the end of the 2^d
line of Lot No. 1, then with said 2^d line covered 25^o 6' 30" to the place of beginning containing 10 acres, 1 and 2/32 of an acre plus

Lot No. 2. Beginning at a stake and pile of stones at the end of the 2^d line of Lot No. 1, being also the end of twenty
eight perches on the 2^d line of the whole deed aforesaid, and running thence with the said 2^d line of the whole parcel of 10 acres,
covering the same to agree with the original survey and call of 179^o 60' 30" to a stake marked 11 at the end of said line, then with
the line of said whole parcel, covering as aforesaid, then corner and distance and a part of the fourth of 277^o 71 1/2' to a stake
planted on the old Sunnyside, then with said road 277^o 71 1/2' to a stake and pile of stones at the end of the 3^d
line of Lot No. 2, then with said 3^d line covered 277^o 69 1/2' to the place of beginning containing 20 acres, 2/32 of an acre plus

Geo. H. Bruce Sur.
June 1862



Scale of 40 feet to an inch

Copy "Exhibit B" "Byass"

At the request of Henry M. and Lewis M. Ripdoff, Executors for the estate of the Real Estate of Henry Ripdoff,
late of Frederick County, deceased, I have carefully surveyed part of a tract of land called "Byass" divided by
Robert G. M. Pherson and others, his wife, of Jefferson County, Virginia, and Catherine D. M. Pherson and John
W. S. M. Pherson, of Frederick County, Maryland, to Henry Ripdoff by indenture dated the 1st day of Nov-
ember 1841, and have divided the same into five Lots as follows;

Lot No. 1. Beginning at a stone formerly planted at the end of the 27th line of a tract of land
called "The Reservoir on Manakin" and running thence with the line of said tract covered two corners, cover-
ing the same as to agree with the former survey and holding thereof 173^o 60' 30" to a stake and
pile of stones at the end of the 4th or 263^o 6' 99" line of the part of "Byass" aforesaid, divided by Robert G. M. Pherson
and others aforesaid, to Edward Sevier for 20 acres, then with the said 4th line covered, allowing 1^o for variation
163^o 71 88^o 30" to a stake and pile of stones at the end of 90^o 30" from a line drawn at 22^o 6' from a small chestnut
tree marked with 12 notches and two blades, then with said line covered 62^o 71 60' 30" to a stake and pile
of stones in a line drawn at 62^o 71' from the beginning stone, then with said line covered 162^o 6' 75" to
the beginning, containing 31 acres and ten square perches.

Lot No. 2. Beginning at a stake and pile of stones at the end of the 3^d line of the part of said
tract of land called "Byass" divided by Robert G. M. Pherson and others to Edward Sevier for 20 acres
and running thence with the 4th line thereof, with 1^o for variation, 162^o 6' 106' 30" to a stake and pile
of stones at the end of the 3^d line of Lot No. 1, then with the 4th line of Lot No. 1, 277^o 71 90^o 30" to a small chestnut
tree marked with 12 notches and two blades, then at 62^o 71 7' to a stake and pile of stones in the 7th line of
97 acres, part of "Byass" aforesaid originally, on the 10th day of March 1796, divided by Charles Partridge
to John M. Pherson, then with said 7th line, as heretofore bounded, covered to the place of beginning contain-
ing four acres three cords and twenty six perches.

Lot No. 3. Beginning at a stone formerly planted at the end of the 2^d line of a tract of
land called "The Reservoir on Manakin" and running thence at 62^o 71 45^o 30" to a small chest-
nut tree marked with 12 notches and two blades, being the end of the 2^d line of Lot No. 1, 62^o 6' 75" to
a stone planted at the beginning thereof, and as the end of the 27th line of "The Reservoir on Manakin"

see original paper for lot left off - Exhibit "B"