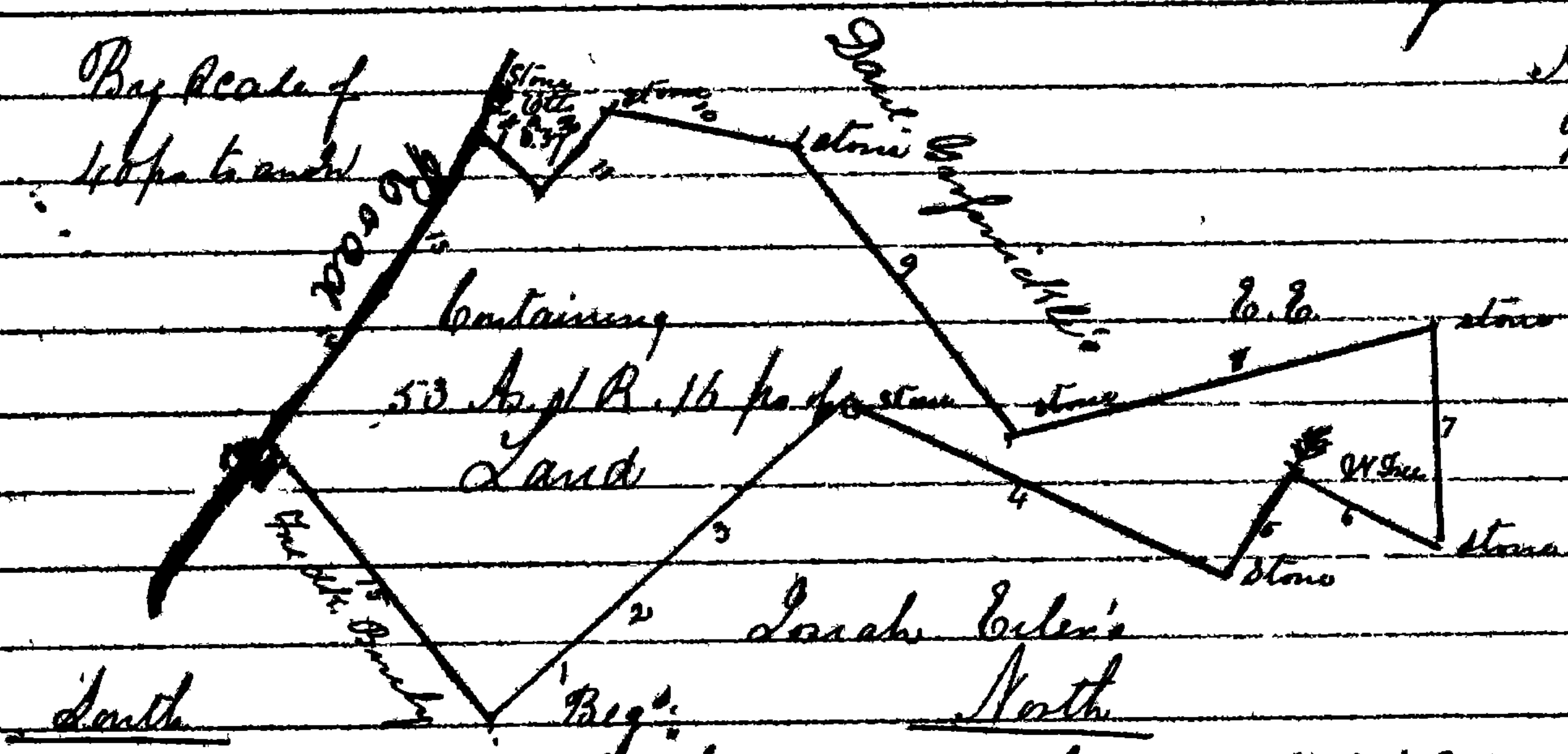


quarter (12) $S 37 \frac{1}{4}^{\circ} W 14 \frac{9}{16}$ ps to cutting and South edge of road leading from Millers Bridge to Haugh's Church and with said road top corners (13) $S 62 \frac{1}{2}^{\circ} E 29 \frac{1}{4}$ ps (14) $S 53 \frac{1}{2}^{\circ} E 32$ ps to an outline of the tract called "Long Snake" and with it reversed (15) $N 30 \frac{1}{2}^{\circ} E 66$ ps to the place of beginning containing fifty three and a fourth acres and sixteen square perches of land

Surveyed at the request of the heirs August 18th 1860 By David Roper surv.



the the Reg^d of deed from the Otto to the Otto of appearing at the end of the south 6th line on the tract of land called "Long Snake"

Maryland Det

Recd The State of Maryland to Proby Anders Florentine B Anders Lisipta L Anders John A Anders Alice Otto Thomas Otto and Ellen Otto of Frederick's County Greeting You are hereby commanded that all persons set apart you personally appear before the Judge of the Circuit Court for Frederick's County sitting as a Court of Equity to be held at the Court House in Frederick Town in and for said county on the third Monday of October next to answer the Bill and Complaint of Lucia A. Otto Henry Working and Secretaries his wife Norton S. Otto et al against you in our said Court exhibited and so forth. Do not fail you not as you will answer the contrary at your peril. Witness the Honorable Madison Nelson Judge of my said Court the second day of July 1860. Signed the fourth day of September 1860 In the Sheriff of Frederick's County B. E. Fitzhugh Clerk

Maryland Det

Recd The State of Maryland to Proby Anders John A Anders Alice Otto Thomas Otto and Ellen Otto of Frederick's County Greeting You are hereby commanded that all persons set apart you personally appear before the Judge of the Circuit Court for Frederick's County sitting as a Court of Equity to be held at the Court House in Frederick Town in and for said county on the third Monday of October next to answer the Bill and Complaint of Lucia A. Otto Henry Working et al against you in our said Court exhibited and so forth. Do not fail you not as you will answer the contrary at your peril. Witness the Honorable Madison Nelson Judge of our said Court the second day of July 1860 Signed the 1st day of October 1860 In the Sheriff of Frederick's County B. E. Fitzhugh Clerk

I hereby deputize G. L. Nimsman to serve the within M. H. Haller Shff