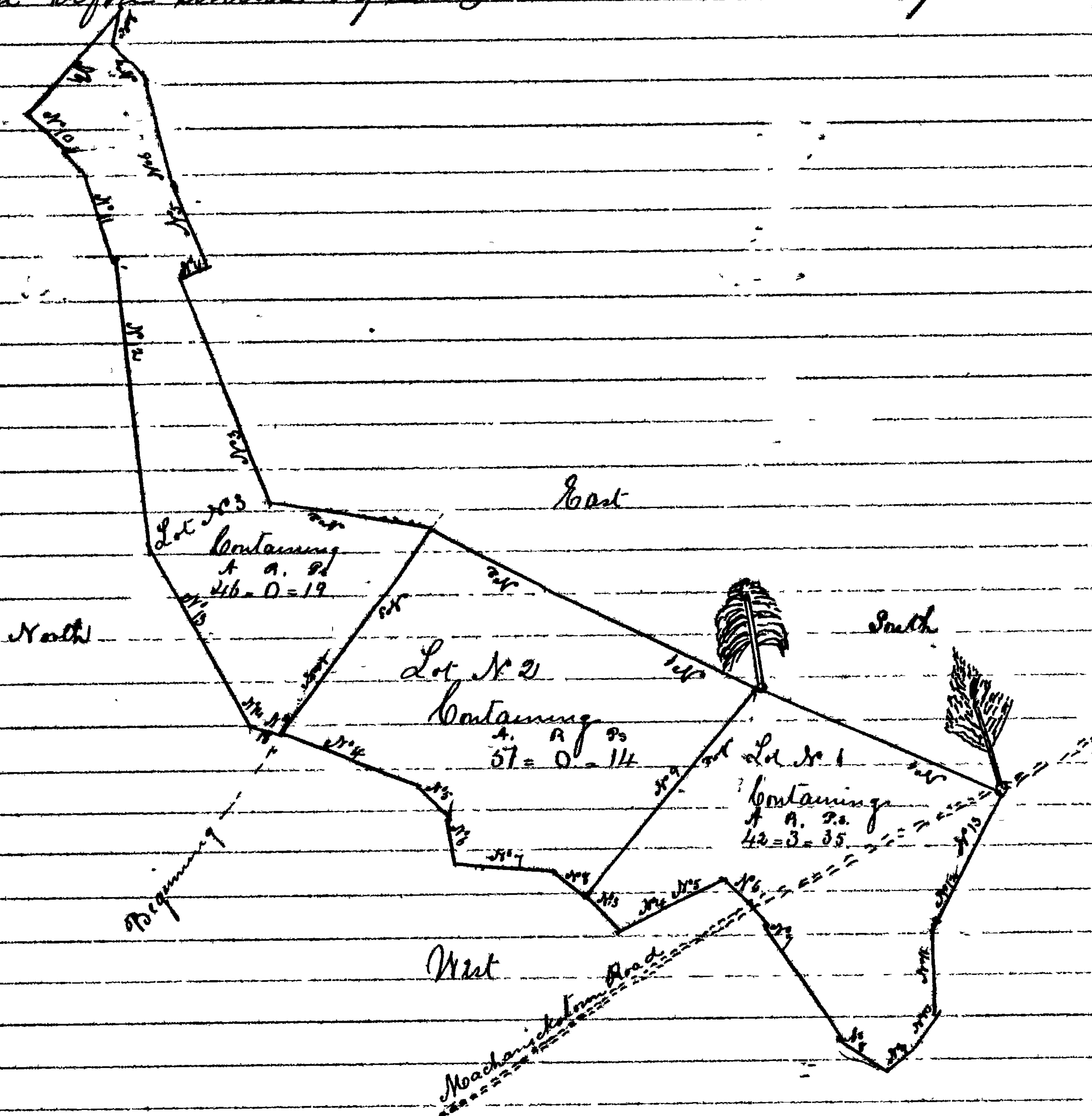


doth make her acknowledgment of the same willingly and freely and without being induced thereto by fear or threats or ill usage by her said husband or fear of his displeasure - Taken & certified the day & year } Dilligan, Nooney  
 first herein before written by us } Same, Baumgardner



The following is the plat courses & Distances of these Lots of land formerly included in my tract called all the remaining situated lying and being in the South Mountain Precincts County No. 11  
 Lot No. 1. Beginning at a Chestnut tree marked with 6 notches Situate on the South side of the road leading to Mechanicstown it being the beginning Corner of the whole tract and running thence as the Table of Courses directs Lot No. 2. Beginning at a pine Sapling marked with 12 notches Situate at the North East end of the first line of Lot No. 1 and running thence as the Table of Courses directs Lot No. 3. Beginning at a stone pile erected at the North West end of the 3<sup>rd</sup> line of Lot No. 2 and running thence as the Table of Courses directs

Lot No. 1		Lot No. 2		Lot No. 3	
Bearing	Distance	Bearing	Distance	Bearing	Distance
1 N 27 3/4 E	82 to a pine	7 S 60 3/4 W	40 do	1 N 27 3/4 E	72.5 to Stone
2 N 52 W	77 to Stone	8 S 23 3/4 W	18 to a stake	2 N 23 3/4 E	40 do
3 S 53 3/4 W	11 do do	9 S 40 3/4 E	10.5 to a white Oak	3 S 57 W	77 do
4 S 23 3/4 E	13 do do	10 S 53 3/4 E	11 do do	4 S 23 3/4 W	48 do
5 S 23 3/4 E	24 do	11 S 86 1/4 E	26 to a Stone	5 S 55 3/4 W	13.0 do
6 S 50 3/4 W	20 do	12 S 58 1/4 E	16 do do	6 S 72 3/4 W	14 do
		13 S 72 3/4 E	22.7 to the Beginning		