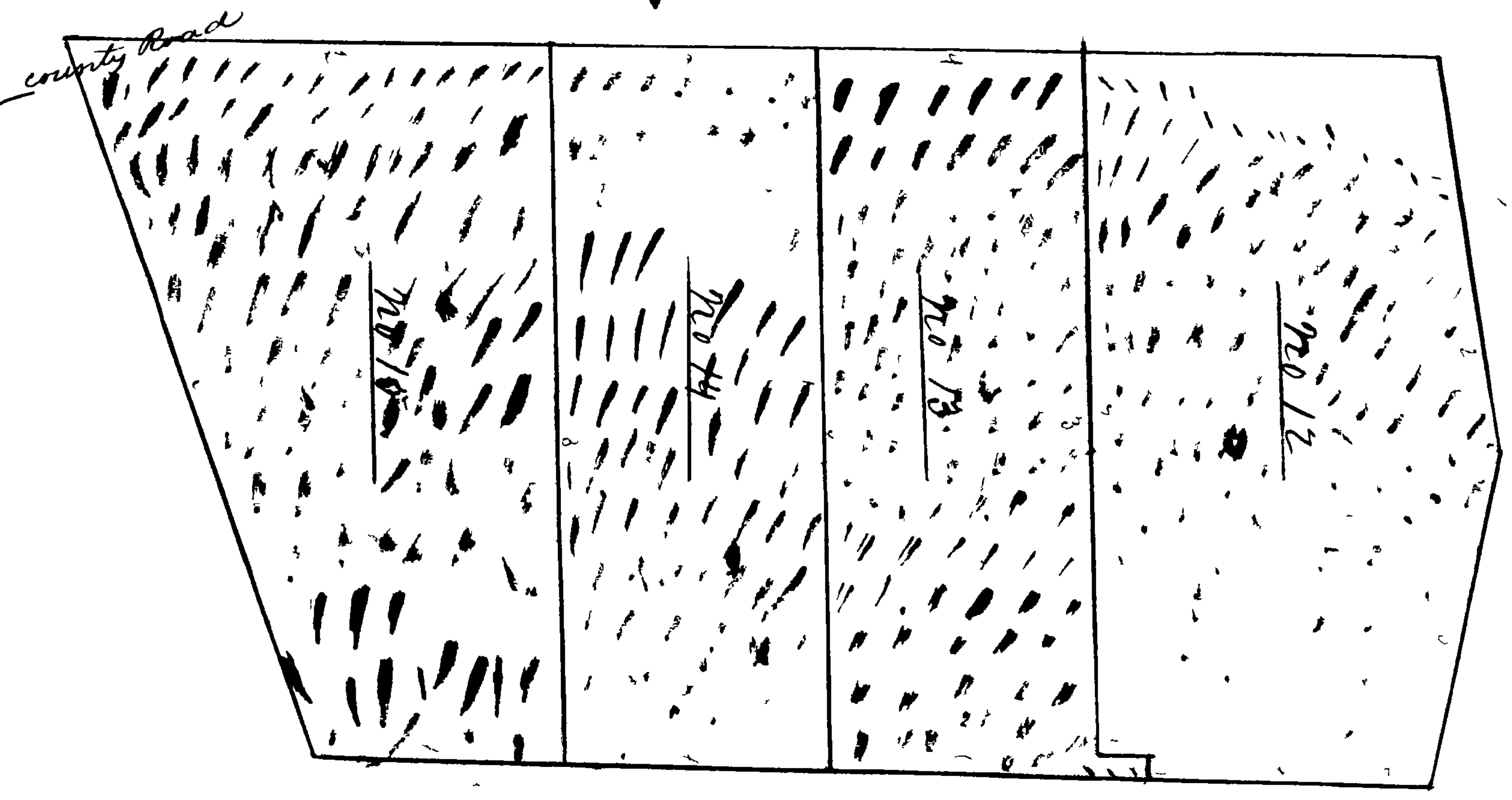


A part of part of the war estate of Sarah
 M. Lawrence late of Frederick County deceased
 surveyed and divided at the request of her
 A. W. Ormoy executor in case No 2736 Equity

July 1858
 By E. W. Frederick surveyor

No	Ac.	R	P
No 10 contains	32 "	2 "	23
11	"	3 "	24
12	21 "	0 "	16
13	15 "	0 "	18
14	15 "	0 "	6
15	20 "	2 "	28
	<u>106 "</u>	<u>1 "</u>	<u>85</u>



For Courses See next Page

Jos W. L. Garty