

Frenchmans Purchase situated lying and being in Frederick County aforesaid - and contained within the metes and bounds courses and distances as follows to wit - Beginning for the same at a stone planted and standing near to a large Wood Cherry tree at the Junction of two fences in a South East direction from the Mansion of said deceased - and running thence as follows with a line of the land now owned by a certain Robert Allison - thence with Solomon Shaysbaugh, Eli Graft the heirs of John Grabbill dec<sup>d</sup> and Geo. Row - a quantity to the table of Courses hereunto set forth and numbered from the letter A on the plat and containing within the metes and bounds thereof one hundred and sixty four acres three rods and twenty six square perches of land - Surveyed and carefully laid down by

September 21<sup>st</sup> 1842. - <sup>North</sup> Lands of the heirs of John Grabbill dec<sup>d</sup> Wm Moorey S. S. P. L. C.

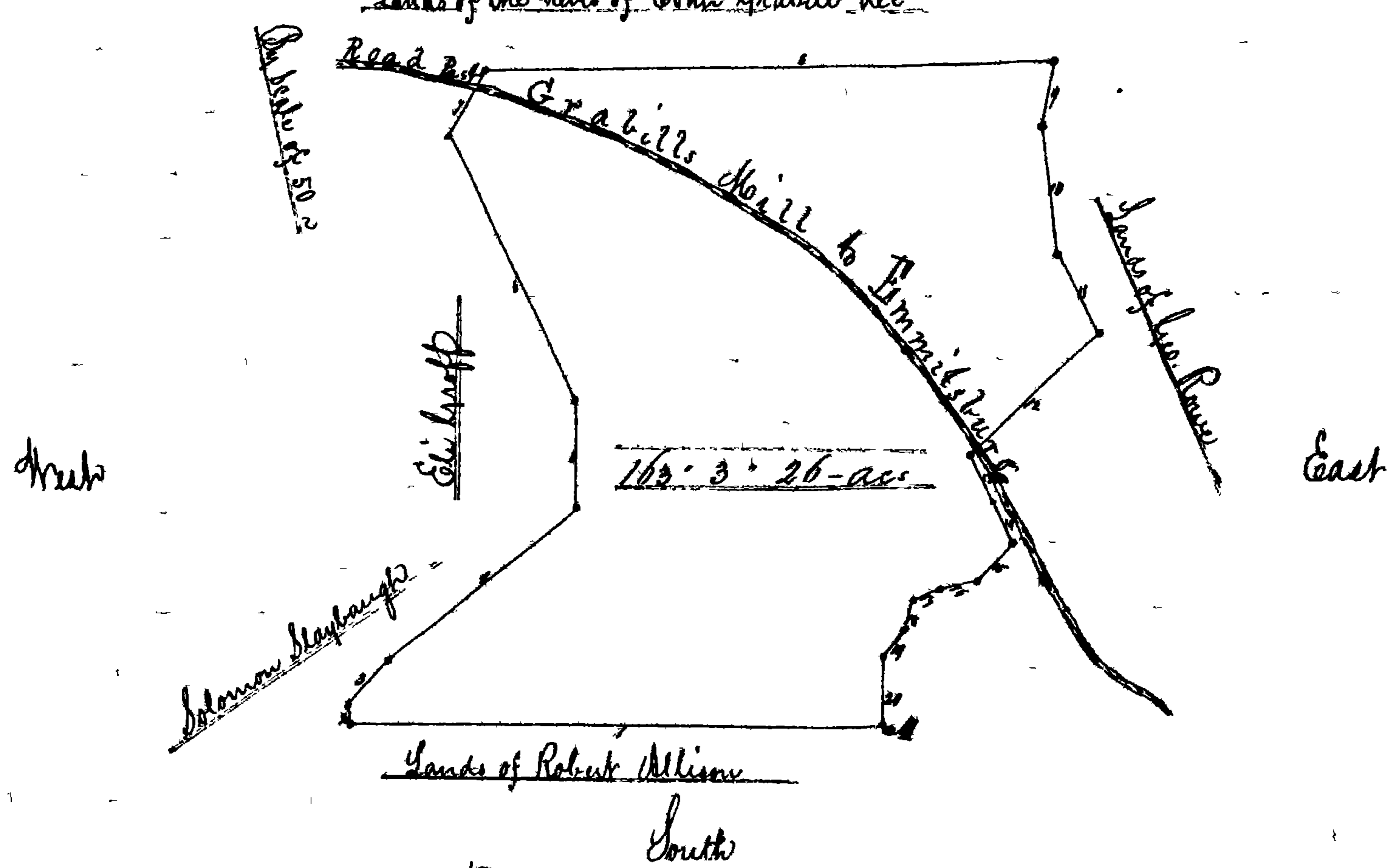


Table of Courses

- A West 149 ft Stone,
- B North 3 West 5 ft Stone,
- C North 2 1/2 E 17.2 ft Stone,
- D North 51 E 67.8 ft Stone,
- E North 30 ft Stone,
- F North 2 1/2 West 82.4 ft Stone,
- G North 32 East 31.5 ft Stone,
- H North 85 1/2 East 100 ft Stone,
- I South 10 West 19 ft Stone,
- J South 6 1/2 East 36.2 ft Stone,
- K South 29 1/2 East 35.2 ft Stone,
- L South 47 West 50 ft Stone,
- M South 31 1/2 East 14.8 ft Stone,
- N South 21 East 13 ft Stone,
- O South 43 West 14 ft Stone,
- P South 75 West 11.2 ft Stone,
- Q South 67 West 8 ft Stone,
- R South 14 West 8.5 ft Stone,
- S South 40 West 10 ft Stone,
- T South 6 1/4 West 19.4 ft Stone to the beginning containing 164° 3' 26" ac

Public Sale

By virtue of a decree of the Circuit Court for Frederick County, sitting as a Court of Equity, the undersigned Trustee will offer at public sale, at one o'clock P.M. on the premises, on Saturday the 17<sup>th</sup> of December 1844, the farm formerly owned by Joseph Martin dec<sup>d</sup> containing 170 acres, about 30 acres of which are well timbered, this farm is situated about 3 miles East of Emmitsburg, and half a mile from the Plank Road leading from Emmitsburg to Pottersville adjoining the lands of Messrs Robert Allison, Samuel Oiler and others. The improvements consist of a two-story Weatherboard house, two wells of never failing water near the door, Log barn a work shop, and other necessary out buildings. There is a young Orchard on the premises. The farm is laid off into convenient fields in a good state of cultivation, the fences being in good repair, and any person wishing to view the premises can do so by calling upon the subscriber. Terms of sale as prescribed by the decree - One half of the purchase money to be paid on the day of sale, the residue in one year from the day of sale, the purchaser giving this note with approved security, bearing interest from day of sale, on the payment of the whole purchase money, not before, the Trustee will execute a good & sufficient deed. Wm. Martin Trustee

Exhibit to D.