

47  
 \* March 27th's Commission on Building Street No. 2  
 This is a copy of the Commission on Building Street No. 2  
 with the Commission on Building Street No. 2  
 Commission on Building Street No. 2  
 Commission on Building Street No. 2

For the sale of the real Estate devised by the Will of Caspar Mandy dec'd to be sold & divided among the heirs of Christina Barr dec'd be ratified and confirmed, unless cause to the contrary thereof be shown on or before the 19th day of March next; provided a copy of this order be inserted in some paper printed at Frederick, once in each of three successive weeks before said days. The report states the amount of sales to be \$46,319.76. - 23<sup>d</sup> February 1863.

M. Nelson

David Garr wife vs. No. 1782, In the Circuit Court for Frederick County, sitting as a Court of Equity.

Sedition

Ordered that the sales within reported her and the same are hereby ratified and confirmed, no cause to the contrary thereof having been shown although notice appears to have been given as directed by the preceding order. The trustee is allowed the usual Commission and expenses, and the Auditor of this Court is hereby directed to state an account between the trustee and parties entitled to the proceeds of sale, and report the same to this Court for its further action.

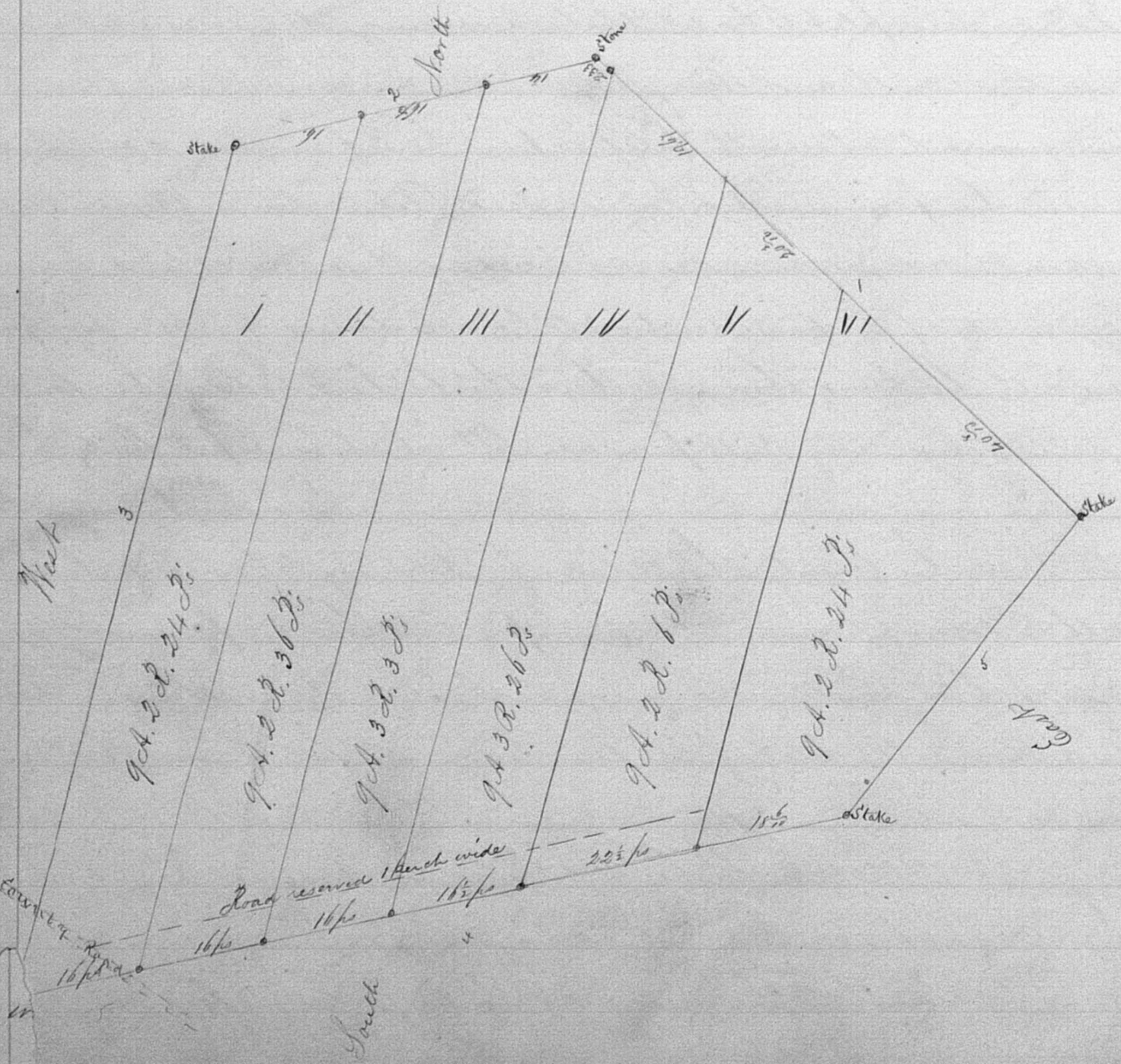
March 30 1863.

M. Nelson

Exhibit  
 B & D.

It is agreed this 20th day of February 1863, between George Smith and Henry C. Drice that the line between the farms purchased by them respectively on yesterday from George Schley trustee, shall run as follows: Commencing on Lewis Fouts' heirs fence at the distance of 119<sup>7</sup>/<sub>16</sub> perches from the North East Corner of George Smith's purchase as above, and running North 80° W to the Orchard fence, then North at right angles with the division line on plot, so far as to get 30 feet clear of the barn on the North side, thence parallel with said division line so far West as to include the barn yard - thence Southward and parallel with the line running East of the barn, so far as to intersect the division line aforesaid - then running with a line South of said division line to the road so as to cut off from the South side of said division line as much land as is included in the part cut off from the North side of said division line.

Witness our hands and seals George Smith Henry C. Drice



	A.	B.	P.
1	9"	2"	= 24
2	9"	2"	= 36
3	9"	3"	= 3
4	9"	3"	= 26
5	9"	2"	= 6
6	9"	2"	= 24
A	58"	0"	= 39