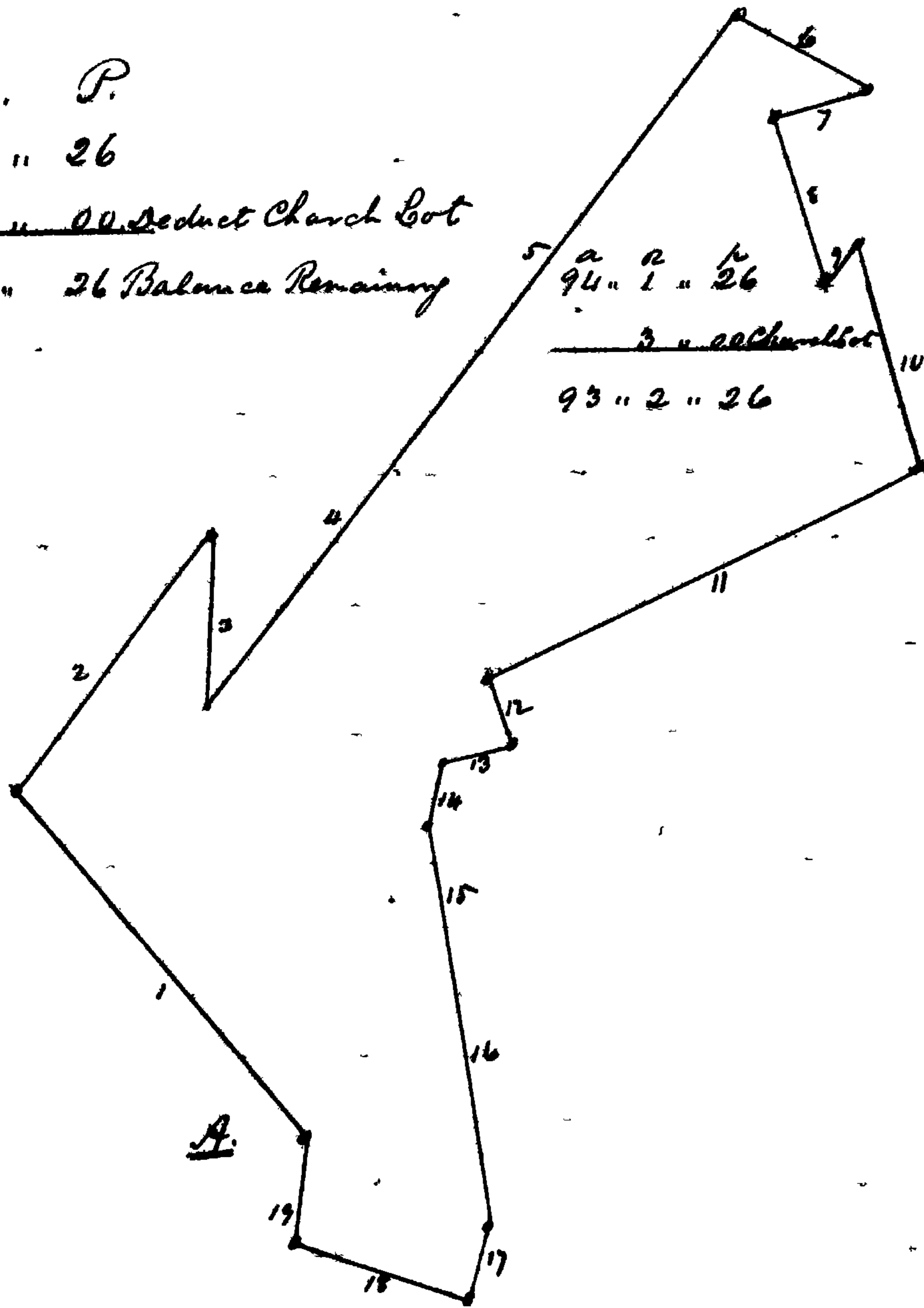


S 11° E 74 1/2 ps. to a stone standing at the North margin of said road being the end of the 3rd line of a lot of ground belonging to a certain John Markin; then with the given line of said lot S 16 1/2° W 16 1/2 ps to a Stone: Standing on a line of David Ludy's land by the Consent of the parties interested then with the divisional lines between said Samuel Markin and David Ludy as agreed upon by the said parties N 72° West thirty four perches to a Stone, North fourteen degrees and three quarters of a degree East twenty two perches to the first mentioned place of Beginning containing ninety four acres, one rood & twenty six square perches of land. Nov 26th 1856
By W^m Metzger, Surveyor.

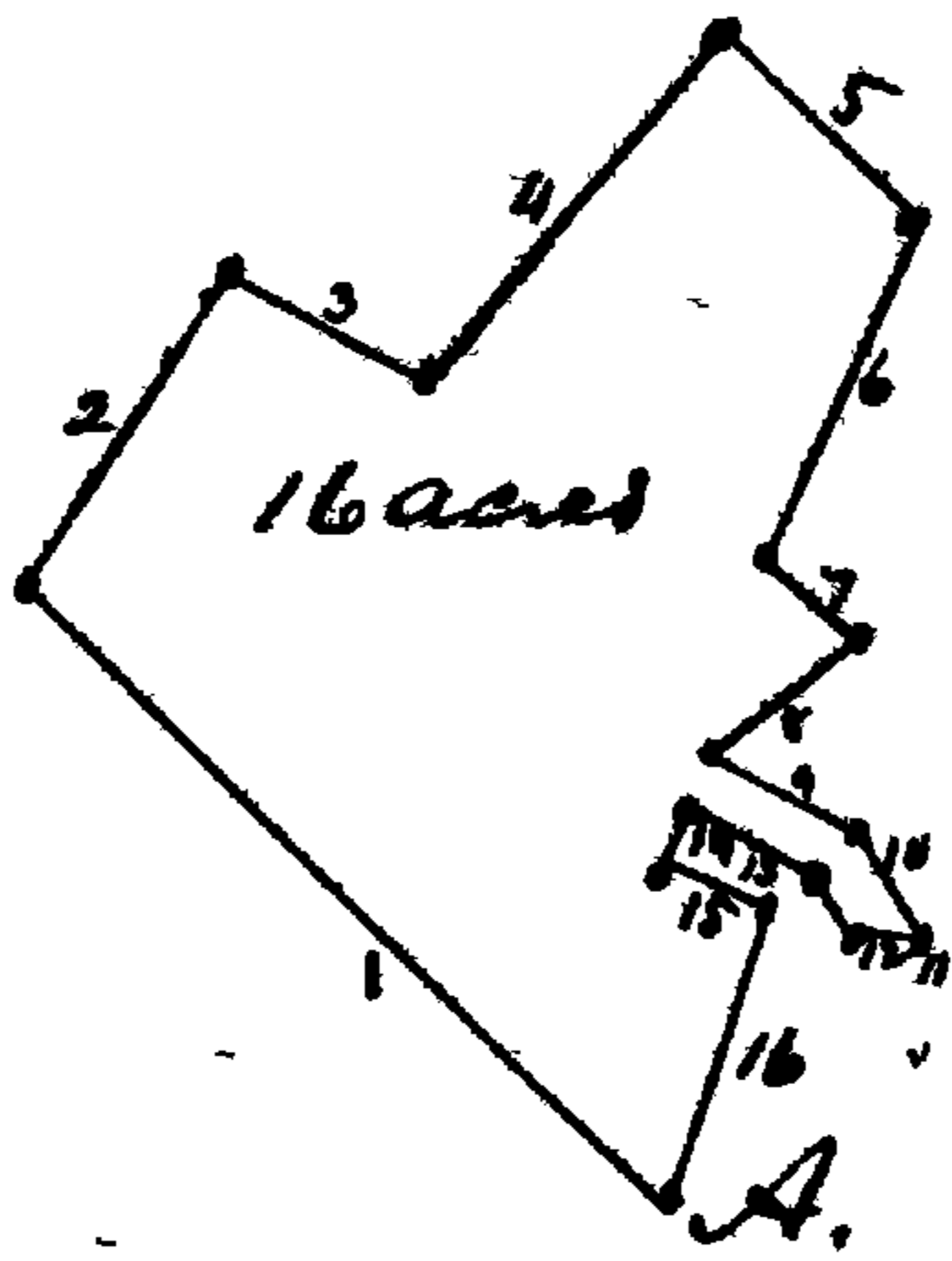
A.	P.	P.	
94	" 1 "	26	
<hr/>			
93	" 2 "	26	Balance Remaining

94	" 1 "	26
<hr/>		
93	" 2 "	26



By a Scale of 20.

Plan of Margaret Markin's dower widow of the late Samuel Markin deceased



Courses and distances of the dower of Margaret Markin widow of the late Samuel Markin as it was laid off by the Commissioners appointed by the Court for said purpose. Beginning for the out lines of said dower at the

lands of the
to the Plat
reped as
to and real
mine, that
interested
of pers
the the pro
then and
in into two
and is so
it be made
have =
to it too
the com=
the said
did not
therein -
Twelve dol.
ata. All
evondands
fifty det.
Seal
Seal
Seal
Seal
Seal

following
" granted
1838 at a
unmythene
line of a
d 12th
end of the
; then by
the 23rd
red N
tains Jacob
ne of said
end of the
d called
ances S 6 1/2°
S 7 1/2° W 20 ps
to a stone -
13 1/2 ps to
- Wolfs=
and road