

his life time, containing about two hundred and four acres, more or less, also a small tract of Mountain land containing about nineteen acres of Mountain land, the same being part of the real estate described in the proceeding in the above named Cause, the land hereby sold being particularly described in the paper herewith filed as Exhibit H. T. D. The said land was sold on the terms prescribed by the decree passed in the above cause,

H. T. Deaver, Trustee,

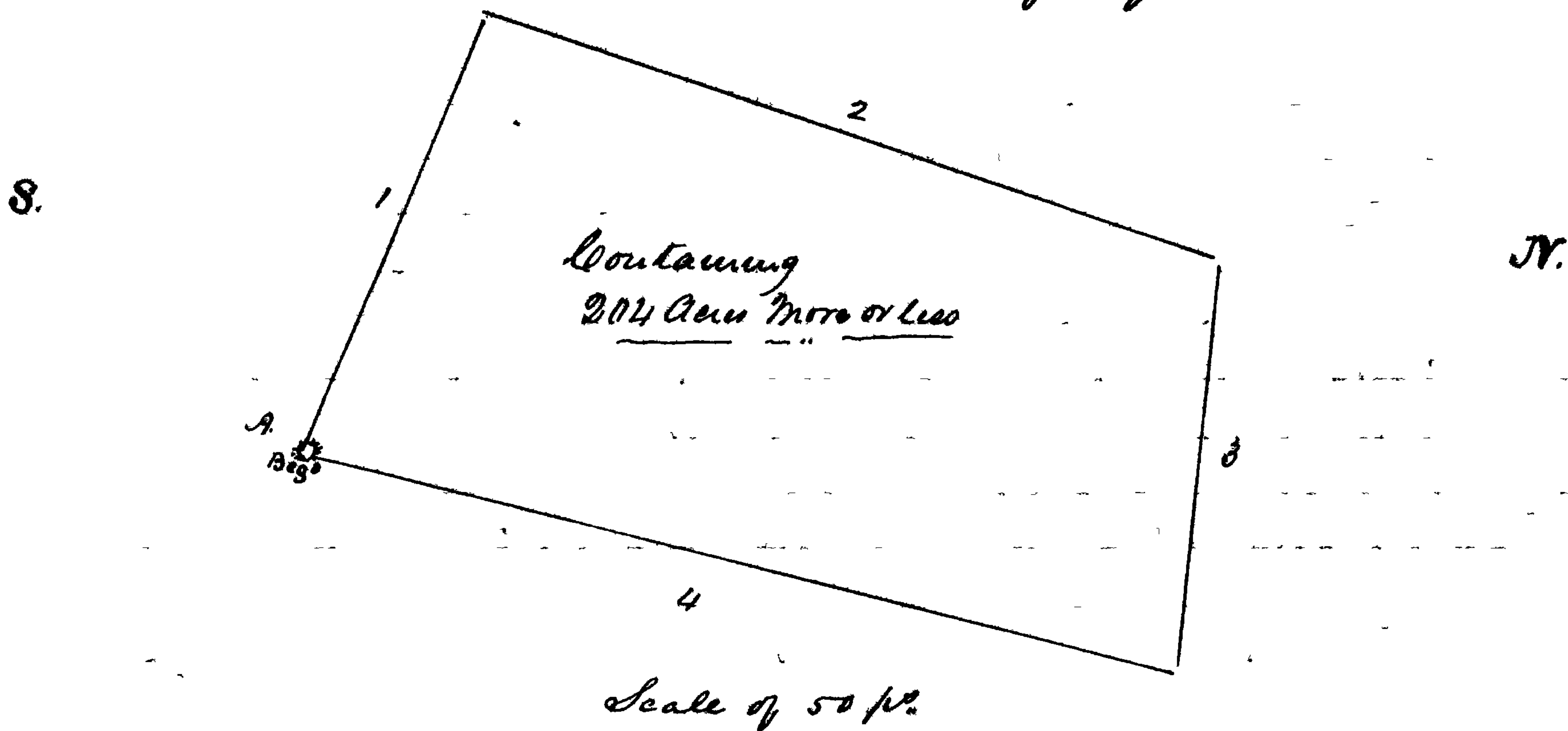
State of Maryland, Frederick County, to wit: On this 26<sup>th</sup> day of December 1856 before the undersigned a Justice of the Peace in & for said County & state personally appears Henry T. Deaver the above named Trustee & makes oath that the matters & things stated in the foregoing report are true to the best of his knowledge & belief & that the sale therein reported was fairly made. Sworn before.

J. M. Harding

Exhibit  
H. T. D  
to Trustee  
1<sup>st</sup> Report  
of Sales

Plat and Courses of Lot No. 2 of Lot No. 2 & 3 distinguished in the division of Lot No. 12 part of the "Resurvey on Maryland" made by Lawrence Brongle in 1810. Beginning at the end of 59 1/2 p<sup>ts</sup> on the 2<sup>nd</sup> line of the whole Lot No. 12 it being the beginning of Lot No. 2 aforesaid, and running thence with said Lot No. 12 and also the 1<sup>st</sup> line of Lot No. 2 & 3 connecting the same N 65° W 14 1/2 p<sup>ts</sup> to the end of the 1<sup>st</sup> line of Lot No. 3, then with the 2<sup>nd</sup> line thereof connecting same. N 20 1/2° E 228 1/2 p<sup>ts</sup> to the end of the last line of whole Lot No. 12, then with the given line thereof and also with the 3<sup>rd</sup> line of Lot No. 3 & Lot No. 2 connecting same. S 82 1/4° E 123 p<sup>ts</sup> to end of 3<sup>rd</sup> line of Lot No. 2, then by and with the 4<sup>th</sup> line of said Lot No. 2 connecting same S 15 1/2° W 270 1/2 p<sup>ts</sup> to the place of beginning containing 204 <sup>acres</sup> more or less.

Surveyed by S. H. O'Neal in 1850



Order  
Nisi

Printers  
Certificate  
Final  
Ratification

Exhibit  
H. T. D.  
to Trustee  
1<sup>st</sup> Report  
of Sales

Courses, distances and Plat of a Mountain lot distinguished as Lot No. 3 in a division made of 58 <sup>acres</sup> on the 9<sup>th</sup> December 1830, allotted to Violetta Gwynn. - Beginning for the outlines of said parcel at a pile of stones at the end of the second line of the whole tract called "The Mountain Side" and with the outside lines of said whole tract connecting the same to agree with the original location N 78° W. 50 p<sup>ts</sup> to stake and pile of stones, S 24 1/4° W. 58 p<sup>ts</sup> to intersect the given line of Lot No. 2 and running one course with said lot, connecting as aforesaid S 80° E. 62 p<sup>ts</sup> to intersect the second line of the whole tract called "The Mountain Side" then with said line N 12 1/2° E 54 p<sup>ts</sup> to the place of beginning, containing 19 1/3 <sup>acres</sup>

Surveyed by S. H. O'Neal in 1850