

I hereby certify - that the foregoing are correct plots of the Real Estate of Thomas Crampton decd. taken from the deeds, and described in Commission issued Sept 27th A.D. 1855 N^o. 2618. Equity, and that page 1st contains an accurate description of the one third parts or dower, at laid out by the Commissioners named in said Commission

John Reid.

Part of Resurvey on Maryland? being parts of Lots N^o. 19. & 20.

Begins at A. 29 ps. on the D. line

of N^o. 18 & runs.

S. 70° E. 133.2 ps.

S 42³/₄ W. 102.5 "

S 26° W. 47.5 "

S 13° W. 40 "

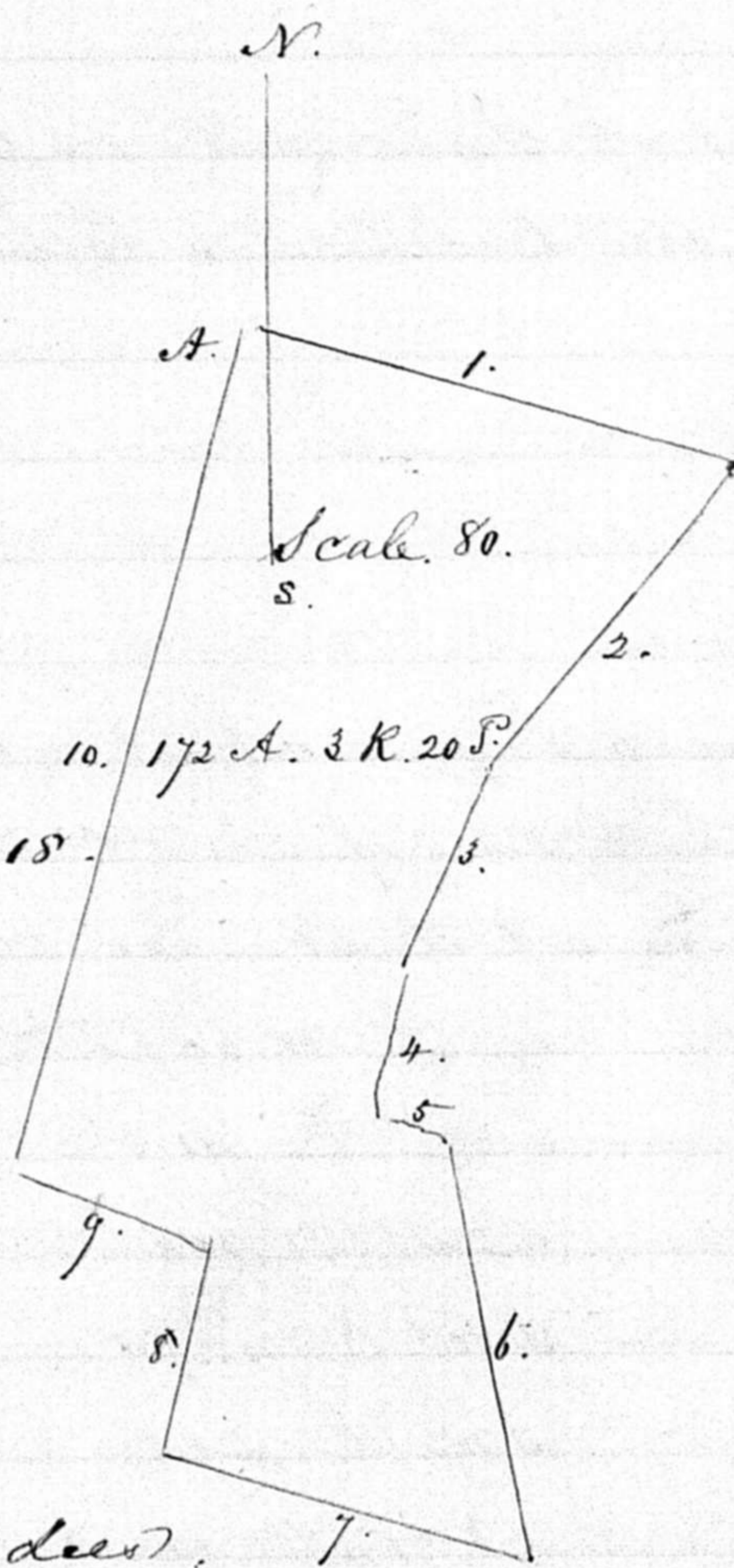
S 67° E. 17.5 "

S 10 E. 113.5 "

N 70³/₄ W. 104 "

N 17° E. 55 "

N. 67° W. 52.3 " to intersect the said D. line of N^o. 18. then with said line reversed to the Beginning.



Part of Resurvey, on Maryland. &

Part of Hawkins Merry Resp O. day. Conveyed by

" Otho Thomas, & wife, to Thomas Crampton, by deed,

dated April 23rd, 1836.

Beginning at A stone planted, at the end of 659 ps. on the 10th line of Resurvey on Maryland, and runs.

S 66³/₄° E 157 ps.

S 45³/₄ E. 19 ps.

S 52° W. 102 ps.

N 70° W. 94.8 "

S 10¹/₂° W. 255 "

N 84¹/₂° W. 34 "

N 19¹/₄° E. 60 "

N 10. W. 117 "

N 67° W. 17.5 "

N. 13° E. 40 "

N^o. 26° E. 47.5 "

N. 42³/₄° E 102.5 "

N. 27¹/₂° E. 21.75 "

to the Beginning

