

as directed by the foregoing Commission, and in all things, truly, and faithfully execute the powers given, and perform the duties required of you, by the said Commission, without favor, or partiality to, or prejudice, or ill will against any person interested therein so help you God. Wm. A. Willing, J.P.

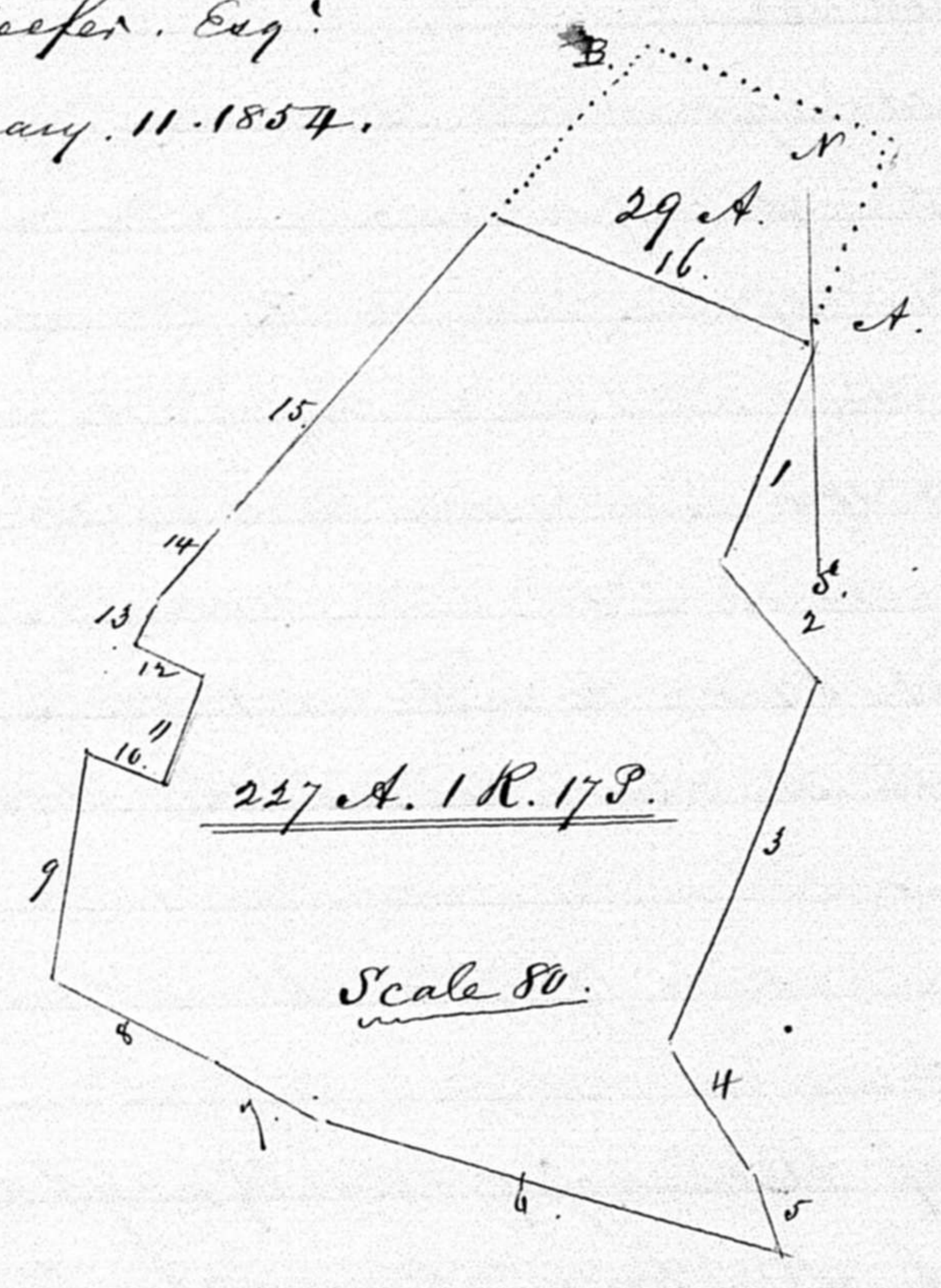
Dower

of Mrs. Martha V. Crampton, as laid off by Commissioners, Hanson Marlow, Benedict Bacon, Levin West, Henry Doulop & Robt. McDuell Esqrs. November 20. 1853.

Part of "Pine Land" as by Deed from McKeefer, Esq: Trustee to Thomas Crampton, dated, January 11. 1854.

Dower begins at A. at the end of 58 ps. on the E. line of said Deed & runs with the Courses & distances thereof as follows.

- S 24 1/2° W. 64 ps.
- S 33 1/2° E. 41.5 "
- S 24 1/2° W. 104 "
- S 30° E. 40 ps "
- S 11° E. 21.5 ps "
- N 71 1/4° W. 124.8 "
- N 60 1/2° W. 36.4 "
- N 60 1/4° W. 46.4 "
- N 11 1/2° E. 61.15 "
- S 64° E. 23.75 "
- N 25 1/2° E. 30.95 "
- N 64° W. 21.05 "
- N 31° E. 17. "
- N 41 3/4° E. 30. "
- N 44 1/4° " 109 " then with a straight line to the place of Beginning.



The dotted lines represent the frank cut off by the Comm. Begins at B. the Beginning of Deed & runs
 S. 66° E. 69.7 ps.
 S. 24 1/2° W. 58 "
 S 66° W. 91.25 "
 N 44 1/4° E 41 ps.
 N 46° E. 21.6 " to Beginning.

Part of John & Priscilla " conveyed by Hanson Marlow & wife to Thomas Crampton by Deed dated May 1st. 1848.

