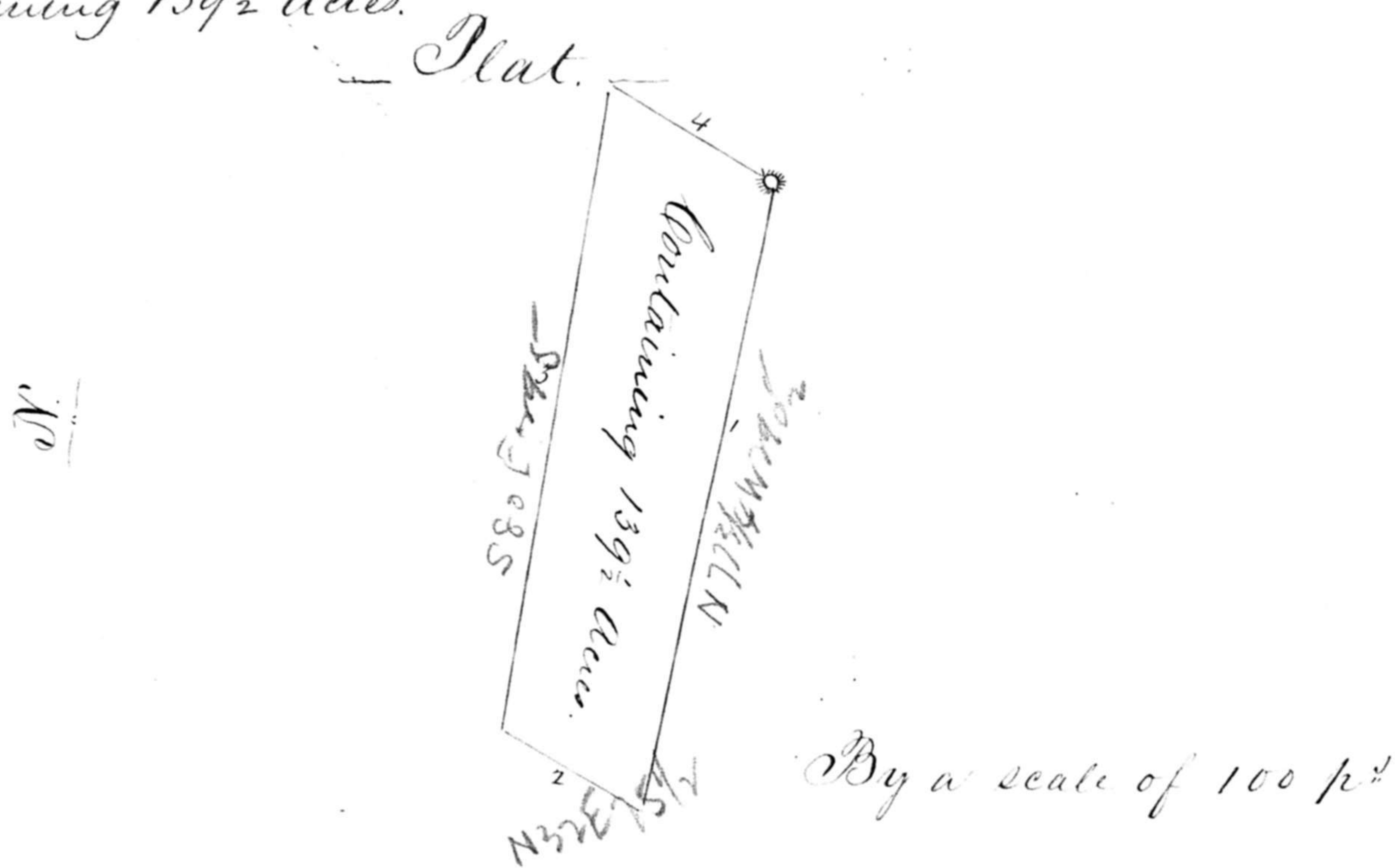
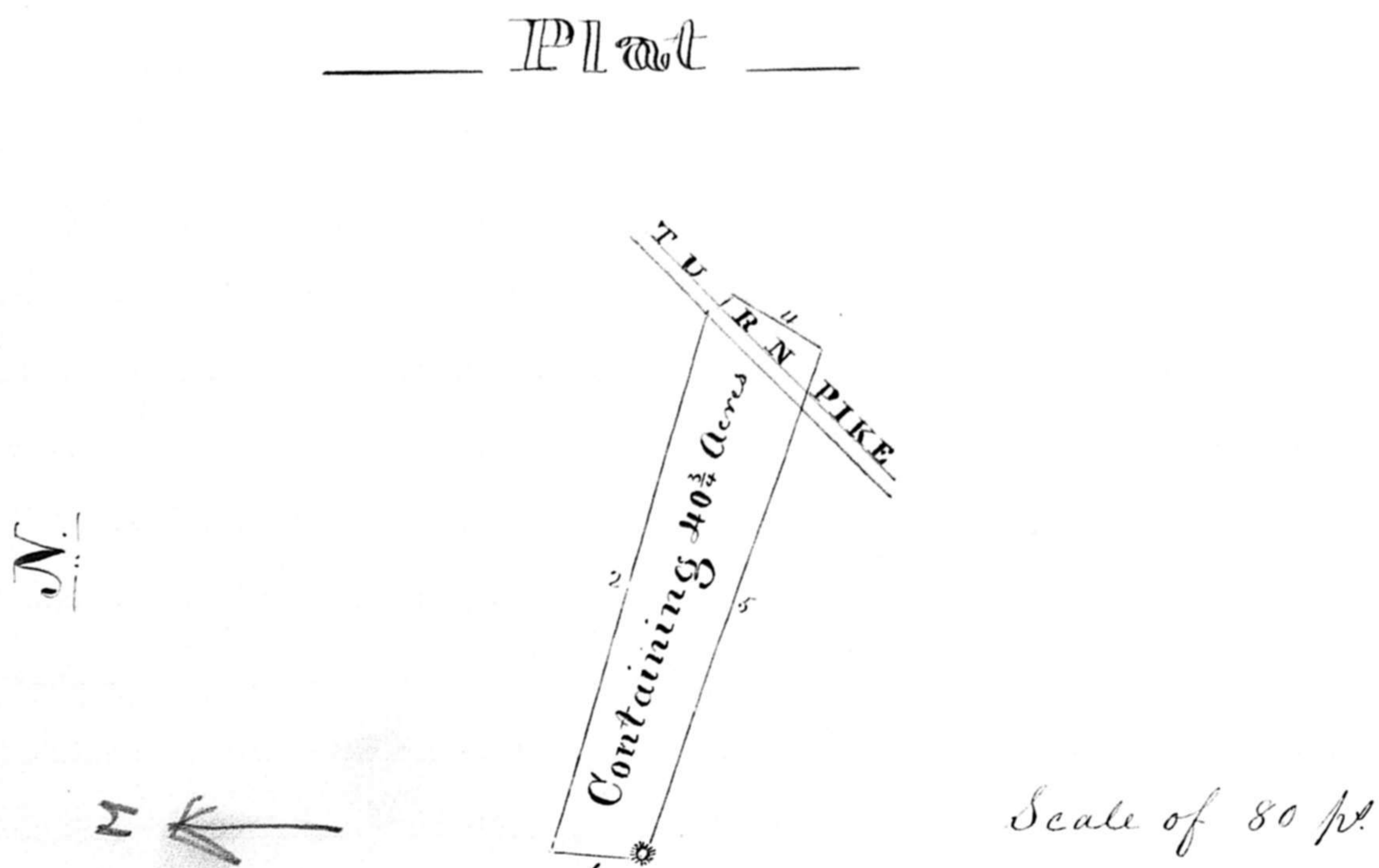


Courses, &c. of the Mountain Land, part of the real estate of the late Joseph Eichelberger. The 1st Parcel being part of Lot N^o 8. part of "The Mountain Tract" being part of the land deeded by George Calvert to Frederick Eichelberger by deed dated the 2nd March 1798. Beginning at the end of the 3rd line of the deed aforesaid from George Calvert to Frederick Eichelberger, and running thence by and with said deed reversed 2 courses correcting the same N. 77³/₄° W. 290¹/₂ p^s. to intersect the 78th line of "The Mountain Tract" and with said line reversed correcting the same N 32° E. 75¹/₂ p^s. then S 80° E. 295 p^s to intersect the given line of the deed aforesaid then with it reversed to the beginning, containing 139¹/₂ Acres.



Courses &c. of the Mountain Land, part of the real estate of the late Joseph Eichelberger. - The 2nd parcel being part of Lot N^o 10 part of "The Mountain Tract." Beginning at a stake at the end of the 6th line of Matthias Suroops part of Lot N^o 10 for 60^{ac} as surveyed 15th March 1810, and running thence with the outlines thereof reversed 3 courses correcting the same, N 2¹/₂° E. 28³/₁₀ p^s. to a stake on the north side of a road about 3 feet west of a small black Oak S. 72° E 194 to a stake at the Turmpike, S 31° E 8¹/₂ p^s. to a stake in a pond of water, then S. 30¹/₂° West 35¹/₄ p^s. to a stone on the closing line of the 60 acres aforesaid, then with said line reversed to the beginning, containing 40³/₄ Acres.



March 2^o 1855.

Surveyed
 pr. S. H. O'Neal
 Surveyor Fredk. Co.