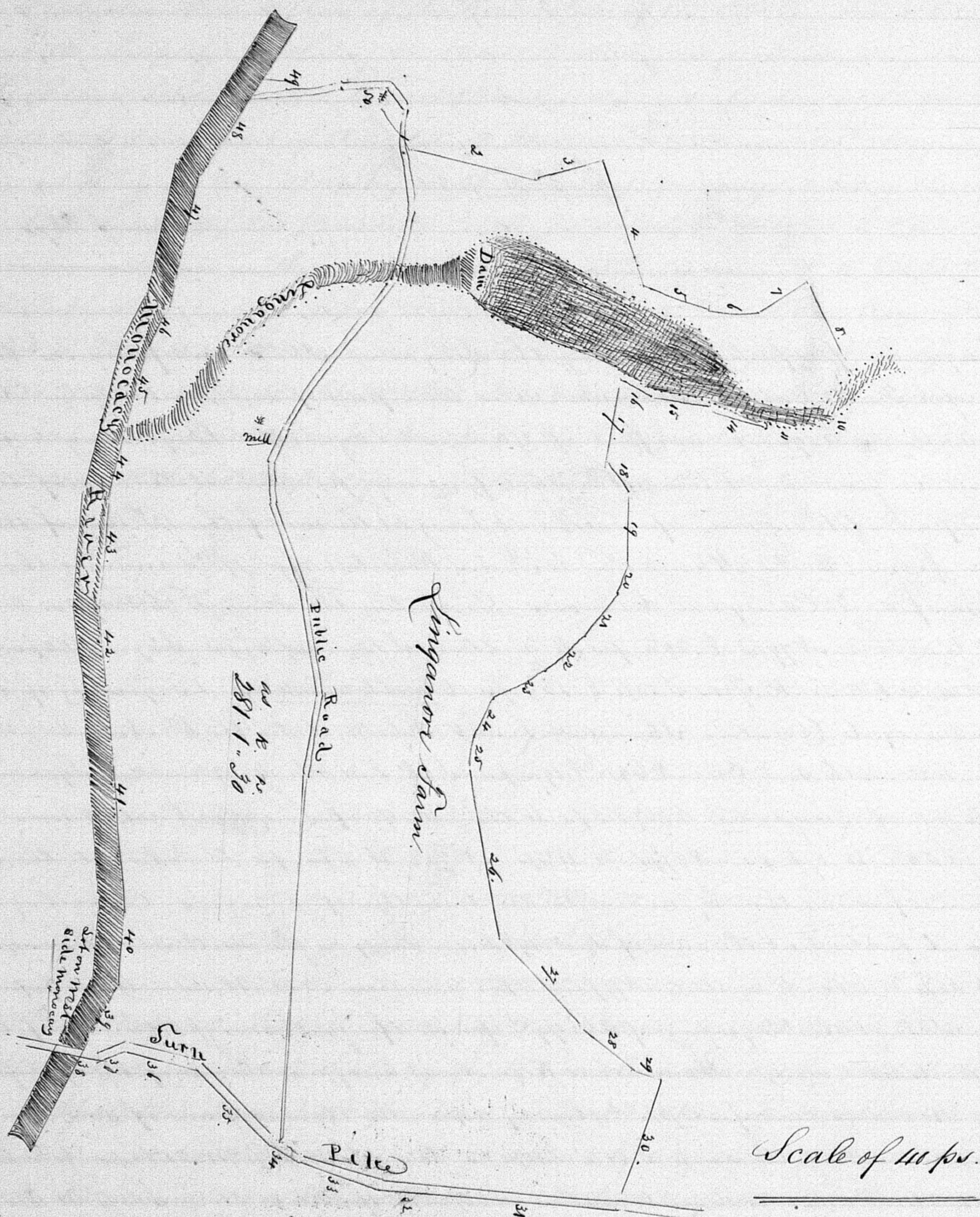


North



I hereby certify that I have carefully surveyed the Real Estate of the late Cornelius Shiner of which the foregoing courses, Plans &c are true Copies

S. H. C. Neal, Sur^r. Jud^g. Co.

The following Ratification of Commissioner's return was filed 1. Jan. 1855.

Edward A. Shiner	} In the Circuit Court for Frederick County as a Court of Equity. Ordered by the Court this 1 st day of January 1855.
"	
Mary Phoebe Shiner and Others.	
	} That the return of the Commissioners, as made in this Cause be, and the same is hereby finally ratified, and confirmed.
	M. Nelson.

The following was filed Jan. 10th 1855. to wit

Edward A. Shiner	} No. 2577. Equity. In the Circuit Court for Frederick County as a Court of Equity. Edward A. Shiner of Frederick County state of Maryland, eldest son, and the only heir of Cornelius Shiner late of said County & State dec ^d . of the age of 21 years do hereby refuse to take the Estate of the said Cornelius Shiner at the valuation thereof made by the Commissioners in this Cause
"	
Mary Phoebe Shiner and Others.	
	E. A. Shiner
Witness.	Wm. J. Ross