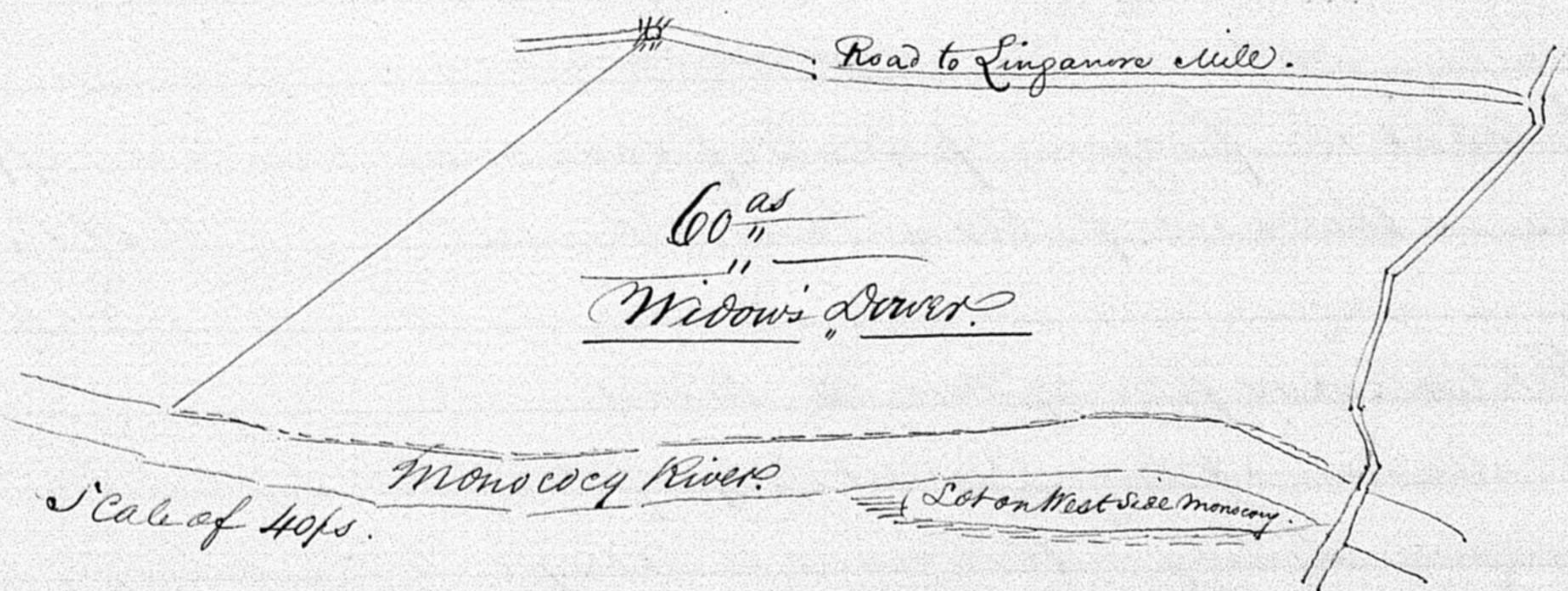


State of Maryland. Frederick County to wit; Be it remembered, that on this 10<sup>th</sup> day of November 1854. before me the Subscriber. a Justice of the peace of the State of Maryland in and for Frederick County. personally appeared John Bert. Lewis Durmon, David C. Johnson. Frederick Strantz, and E. L. Delashmutt. and make oath, on the Holy Evangel of Almighty God that they will try faithfully execute the powers given, and perform the duties required of them by the said Commission. without favour, or partiality to, or prejudice, or ill will against any person, whatsoever Interested therein. and according to the best of their Judgment, and understanding.

Sworn Before, M. A. Calhoun.

The following return was filed Decr. 27. 1854.

Courses distances. and plat of the part of the Singanore Farm, assigned by the Commissioners to Mary Phoebe Shrimo, as her dower, being part of a tract, called "Charles and Elizabeth. and part of the second part of "1 Pennesim" Beginning at the end of the 78<sup>th</sup> on the 16<sup>th</sup> or S. 39° W 100<sup>ps</sup> line of the tract aforesaid called Charles and Elizabeth. it being the end of the fifth line of 8<sup>3/4</sup> a<sup>cs</sup> Conveyed by Sam<sup>l</sup>. Canby. and Samuel Dues to C. Shrimo & Louise Schell in being in the ~~middle~~ Public Road - leading to the mill & running thence with said paul reverse, and said Road, Correcting same S 15<sup>3/4</sup> W 24<sup>85/100</sup> ps S 3<sup>3/4</sup> W 76<sup>ps</sup> S 5<sup>2</sup> W 38<sup>ps</sup> N 82<sup>1/4</sup> W 2<sup>ps</sup> to the middle of the Turnpike, then with the middle thereof N 43° W. 33<sup>35/100</sup> ps. N 73<sup>1/2</sup> W. 22<sup>70</sup> ps. S 72<sup>1/2</sup> W. 10<sup>ps</sup> to the East end of the Bridge N. 60. W. 3<sup>45/100</sup> ps. ending on the Bridge, then up South meanders of Monococy. on the East side thereof, N. 27<sup>1/4</sup> E 24<sup>ps</sup>. N 5<sup>2</sup> E 22<sup>ps</sup> N. 2<sup>1/4</sup> W. 69<sup>60</sup> ps. N 5 W 22<sup>85/100</sup> ps. N 7<sup>1/4</sup> E. 35<sup>45/100</sup> N 13<sup>1/2</sup> E. 17<sup>70</sup> ps. then by a straight line to the Beginning. Containing 60 acres. also a lot on the West side of Monococy. Containing about 2<sup>as</sup> which lies between Monococy & the lot of the Baltimore & Frederick Turnpike Company.



Courses, distances. and plat of the part of the Howard Farm, assigned by the Commissioners to Mary Phoebe Shrimo, as her dower, being part of a Tract of land called "Charles & Elizabeth. Beginning at the end of the ninth line of the late Thomas Howards Land. for 378<sup>1/2</sup> a<sup>cs</sup> & running thence, by, and with the out-lines of said land. Correcting the same N 10<sup>1/4</sup> E 9<sup>ps</sup>. N 29<sup>1/4</sup> E 13<sup>ps</sup>. N 63<sup>1/4</sup> E. 18<sup>ps</sup>. N 50<sup>1/2</sup> E 16<sup>ps</sup>. N 40<sup>1/4</sup> E. 16<sup>ps</sup>. N 22<sup>1/2</sup> E 10<sup>ps</sup>. N 3<sup>1/4</sup> E 21<sup>70</sup> ps. N 31<sup>1/4</sup> W. 11<sup>10</sup> ps. S 76° W. 40<sup>ps</sup>. S 40<sup>1/4</sup> W. 78<sup>ps</sup> to the end of the 5<sup>th</sup> line of 8<sup>3/4</sup> a<sup>cs</sup> Conveyed by Samuel Canby, and Samuel Dues to Conubus Shrimo and Louise Schell. then with said deed reverse & with the Public Road, Correcting the same S 15<sup>3/4</sup> W. 24<sup>85/100</sup> ps. S 3<sup>3/4</sup> W. 2<sup>1/2</sup> ps. then by a straight line to the Beginning. Containing 32<sup>as</sup> & 06.

