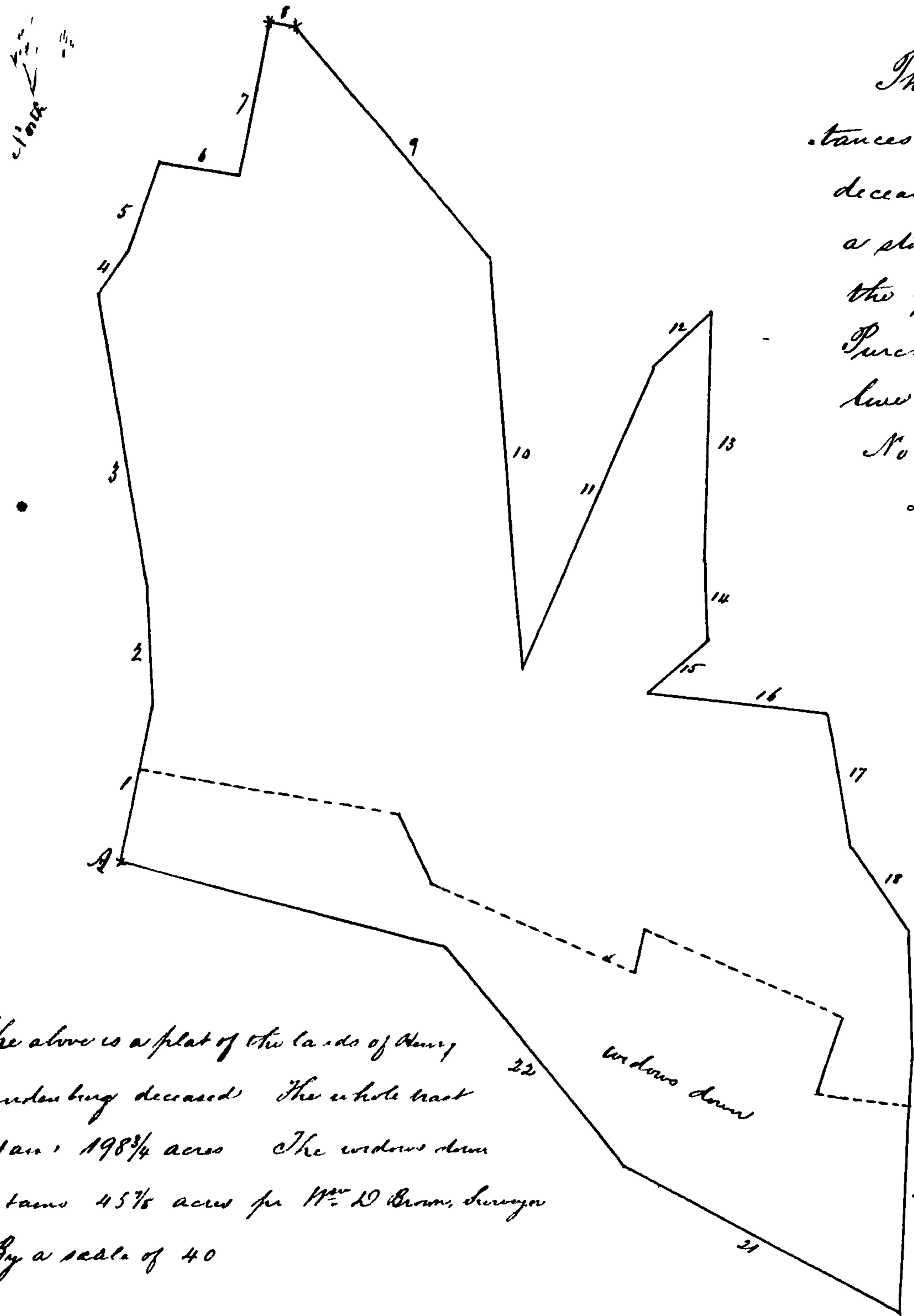


nevertheless that before you or any of you shall act in the premises you or such of you as are to act shall each take the oaths herein to annexed, and we do give full power and authority to any two or one of you jointly or severally to administer such oath in the Holy Evangel by Witness the Honorable Madam Nelson Judge of our said Court the 3^d day of January A.D. 1853 Issued the 25th day of February A.D. 1853

Eduard Shinn Clerk

You John Sausentaukh, John Rechen, Paul Klue and John Smith of L shall according to the best of your skill and judgment, make the partition as directed by the foregoing Commission and in all things truly and faithfully execute the powers given, and perform the duties of you by the said Commission without favour or partiality to or prejudice or ill will against any person whatever interested therein

March 4th 1853 Sworn before Wm D Brown



The following are the courses and distances of the lands of Henry Brandenburgh deceased, beginning for the same at A, being a stone planted at the end of 18 1/2 perches on the 9th line of a tract of land called "Forests Purchase" and running thence with said 9th line

- No 1 N 13 1/2° E 38 1/2 ps to a stone planted
- 2 N 2° W 28 ps to a stone planted
- 3 N 7° W 76 ps
- 4 N 40° E 11 ps
- 5 N 22° E 24 ps
- 6 N 77° E 20 ps to the end of 40 ps on the third line of "Hickory Ridge"
- 7 N 14° E 40 ps
- 8 S 19° E 6 ps to the end of 73 ps on the 35th line of "Forests purchase" apurward thence with said land 2 courses
- 9 S 38° E 75 ps to a stone at a hickory tree
- 10 S 2° E 102 ps
- 11 N 26° E 82 ps
- 12 N 48 1/2° E 20 ps to a stone planted
- 13 S 4° W 61 1/4 ps to a white oak tree the beginning of "Sunning Castle"
- 14 S 2 1/2° W 20 ps to a stone at a road oak tree

The above is a plat of the lands of Henry Brandenburgh deceased. The whole tract contains 198 3/4 acres. The widow's dower contains 45 1/2 acres for Wm D Brown, Surveyor. By a scale of 40

- 15 S 57 1/2° W 19 1/2 ps to a stone at the end of 33 ps on the 6th line Valentines Gift
- 16 S 78° E 45 ps to a stone planted
- 17 S 4 1/2° E 33 1/2 ps to a stone
- 18 S 32 1/2° E 24 1/2 ps to a stone
- 19 S 1 1/2° W 32 1/2 ps to a stone pt^d
- 20 S 8 1/4° W 62 ps to a stone planted the beginning of Octavius Haines part of Forests Purchase apurward and with said land returned 3 courses

- 21 N 62° W 78 ps
- 22 N 36° W 70 ps
- 23 N 72 1/4° W 81 1/2 ps to the first place of beginning Contg 198 3/4 acres

- Courses of the widow's dower beginning at the end of 11 ps on the 20th line of the whole tract and running thence
- 1 N 83 1/2° W 23 1/2 ps
 - 2 N 19° E 20 3/20 ps

- 3 N 77° W 52 1/2 ps
- 4 N 18 1/2° E 11 1/2 ps
- 5 N 78° W 54 ps
- 6 N 23° W 19 ps
- 7 N 72° W 86 ps to the end of 22 1/2 ps on the first line of the whole tract containing 45 1/2 acres for Wm D Brown Surveyor