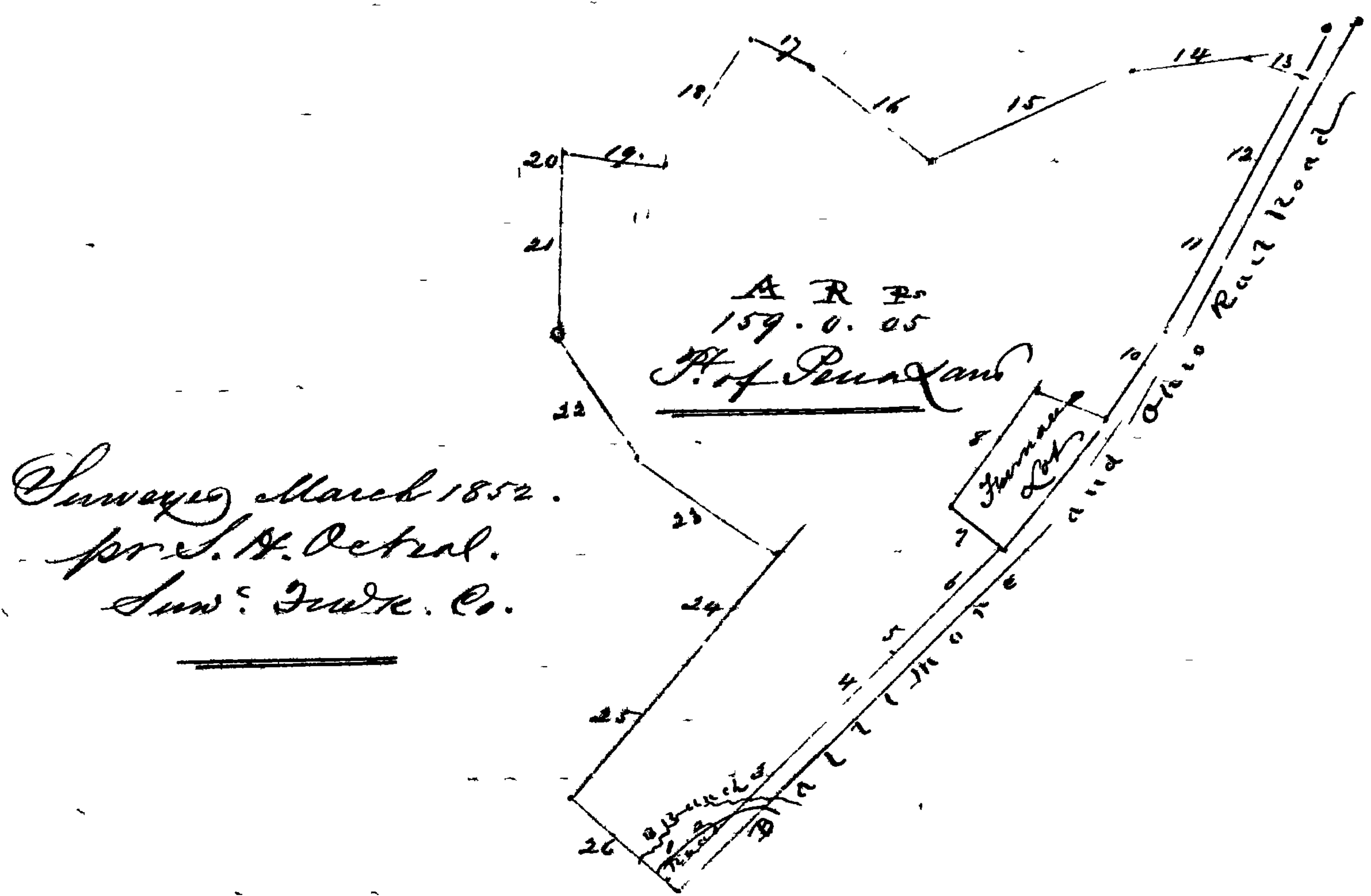


N 46 1/2 ps. at 11 1/2 @ 29 ps then S 88 3/4 W 1 ps to the end of the 48th line of the whole tract called Pennsylvania, then by and with the outlines thereof reversed S 88° W 55 1/2 ps. to a large oak tree, marked with 12 notches S 53 1/2 W 43 1/2 ps S 29 1/2 W 47 ps at 54 W 53 1/2 to a stone at the end of the 4th line of that part of the late Linjor Potlar land as was laid off by the Commissioners, for the widow's dower, containing 91 acres at 54 W 42 ps S 31 1/2 W 25 1/2 to the beginning, containing 159.0.05



Audit Statement of an account, between the Executors of Richard Johnson dec'd & Michael Keefe, Trustee No. 2355. Equity in the Circuit Court for Frederick County.

To cash payment of first sale reported	\$ 4696 77
To cash payment of second sale reported	2915 59
Total cash on hand	7612 34
To Dues 9/10 of Commission, allowed on 1st Sale	407 43
" State of Maryland 1/10 of said Commission	45 27
" Dues 9/10 of Commission allowed on 2d Sale	236 16
" State of Maryland 1/10 of said Commission	26 24
To Dues to Publish or Use of audit	1 00
To Dues amt. paid Printer see Voucher No 1	19 89
To Dues amt paid Printer 1 see Voucher No 2.	6 50
To Dues amt pd Printer 1 see Voucher No 3	4 50
To Dues amt pd auctioneer 1 see Voucher No 4	10 00
To M D Lockette	50 00
To Trustee for survey	32 00
To Trustee for survey	21 00
To Soll his app. fees.	10 00
To Mr D Tyler ck.	5 17
To Edw. Schriver ck	24 09 1/2
To Sheriff his fees	3 83 1/2
To Registrar his fees	1 78