

A photograph of a young child with light-colored hair, wearing a striped shirt and shorts, sitting on a wooden bench in a park. The bench is made of dark wood and has a circular cutout in its side. The child is looking towards the camera. The background is filled with tall, leafy trees and a paved path that leads into the distance. The overall scene is bright and sunny, suggesting a pleasant day in a park.

ANNUAL REPORT 1963-4

The Maryland-National Capital  
Park and Planning Commission

# The Maryland-National Capital Park and Planning Commission

## COMMISSIONERS

WILLIAM J. STEVENS ..... *Chairman*

J. NEWTON BREWER, JR. .... *Vice-Chairman*

MRS. T. PAUL FREELAND ..... *Commissioner*

DONALD E. GINGERY ..... *Commissioner*

LOUIS A. GRAVELLE ..... *Commissioner*

EVERETT R. JONES ..... *Commissioner*

JOHN B. LAUER ..... *Commissioner*

JOHN L. PYLES ..... *Commissioner*

JOHN A. SCHEIBEL ..... *Commissioner*

MRS. RUSSELL WILTBANK ..... *Commissioner*

## DEPARTMENT HEADS

JESSE F. NICHOLSON ..... *Executive Director  
and Secretary-Treasurer*

B. HOUSTON McCENEY ..... *General Counsel*

JOHN S. HEWINS ..... *Director of Planning*

JOHN P. HEWITT ..... *Director of Parks*

JOSHUA B. ZATMAN ..... *Director of Public Relations*

On the cover: *Jesup Blair Park*  
On the back: *The Commission's Montgomery County Regional Office*



Silver Spring Business District

## CONTENTS

	Page
Chairman's Message .....	2
Planning Program .....	3
West Chevy Chase—now and as planned .....	4-5
College Park-Greenbelt and Vicinity Plan .....	6-7
Highway Progress .....	8-9
Zoning Progress .....	10-11
Subdivision Progress .....	12-13
Park Progress—Acquisition .....	14-19
Park Progress—Development .....	20-29
Commission Activities .....	30-31
Public Opinion .....	32-33
Financial Statement .....	34-40

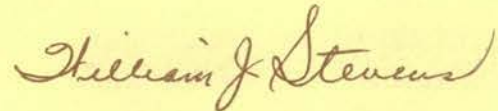
## CHAIRMAN'S MESSAGE

The past year was a continuation of steady, substantial progress by this Commission toward the goal of strengthening and sustaining a desirable environment for the people of Montgomery and Prince Georges Counties.

Planning is like insurance: It is easy to overlook when things seem to be going right, and it's too late for it after things have gone wrong.

This is why it is so vitally necessary now, in this period of constantly accelerating change, to continue to search for the best ways to protect what we have and to make provision for what we will need.

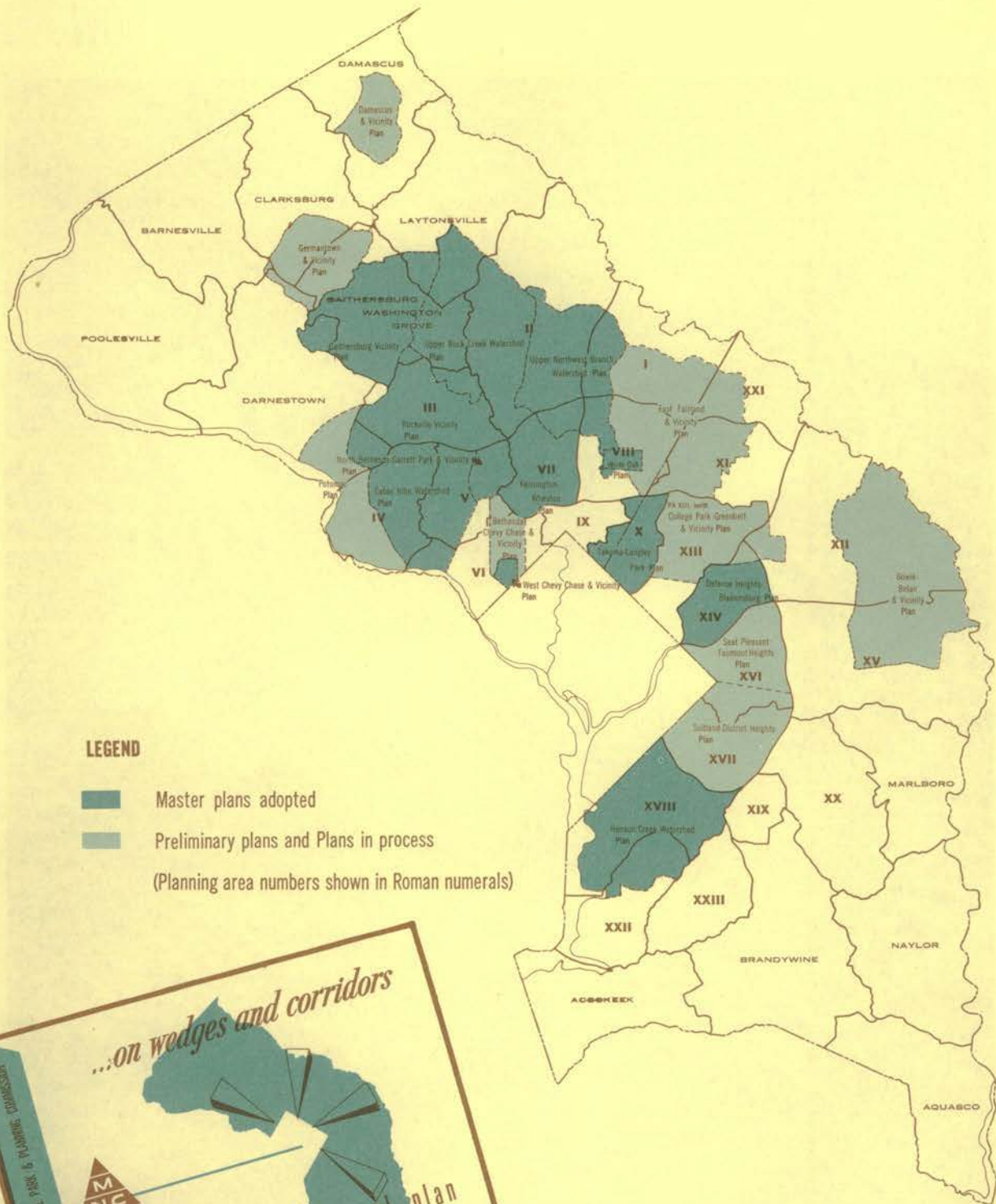
We cannot and, in any case, will not stop change. But we can influence change to serve us for the better. For the alternative to being the master of change is to become its victim.



WILLIAM J. STEVENS  
Chairman

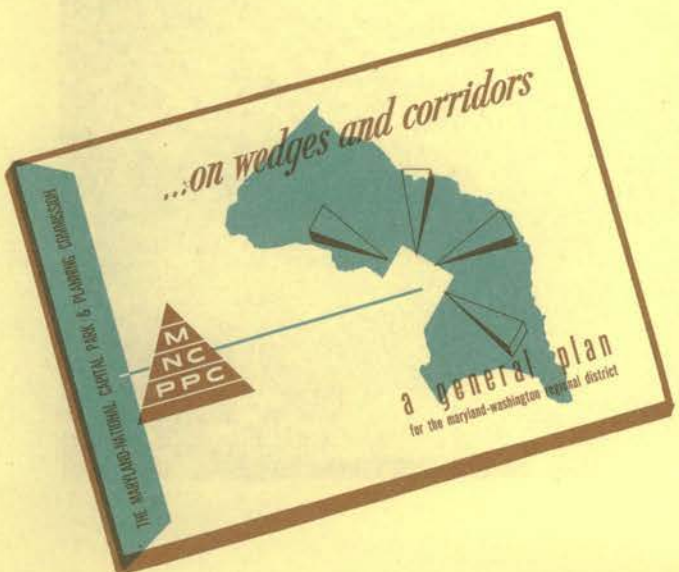


# PLANNING PROGRAM



## LEGEND

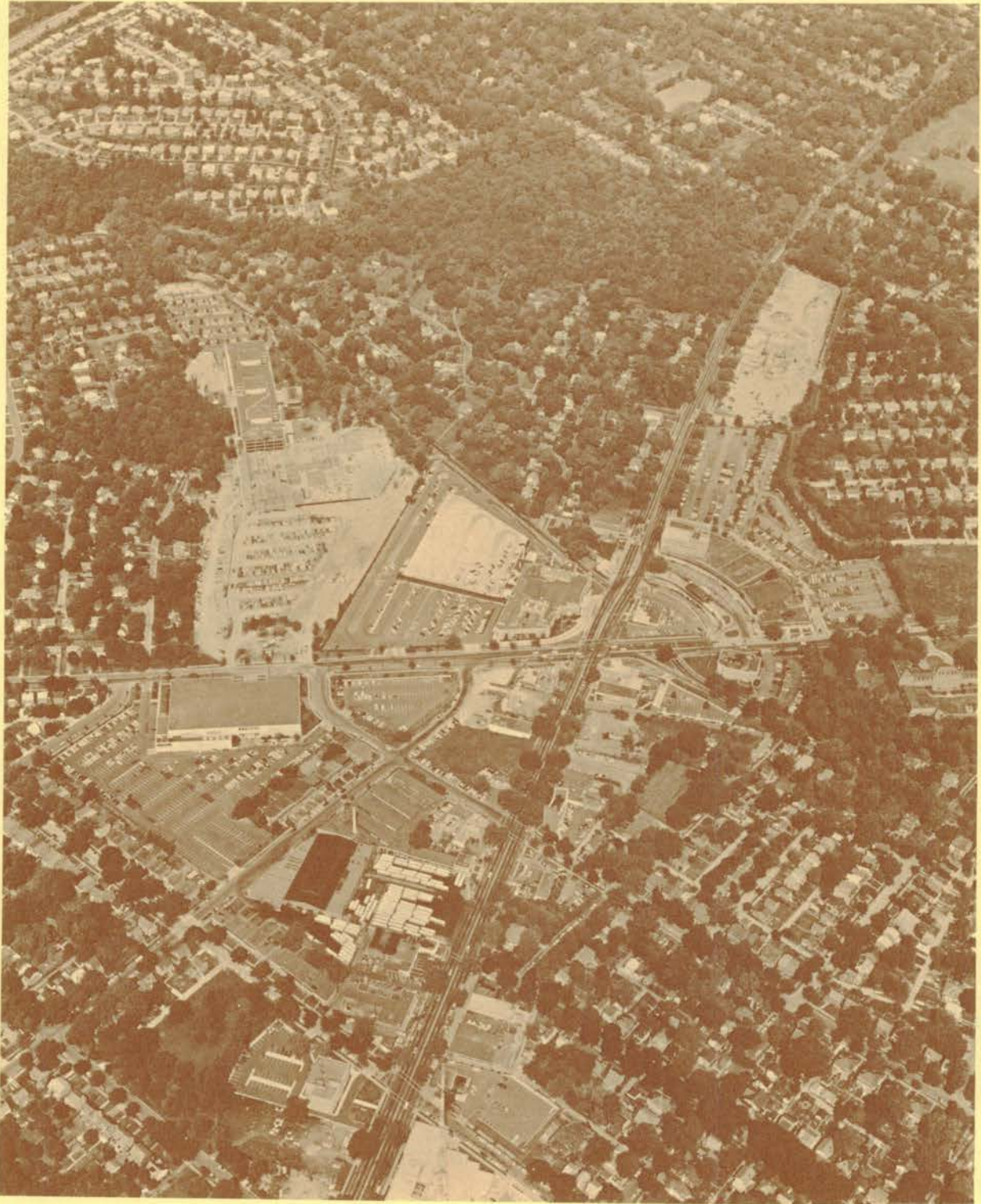
- Master plans adopted
  - Preliminary plans and Plans in process
- (Planning area numbers shown in Roman numerals)



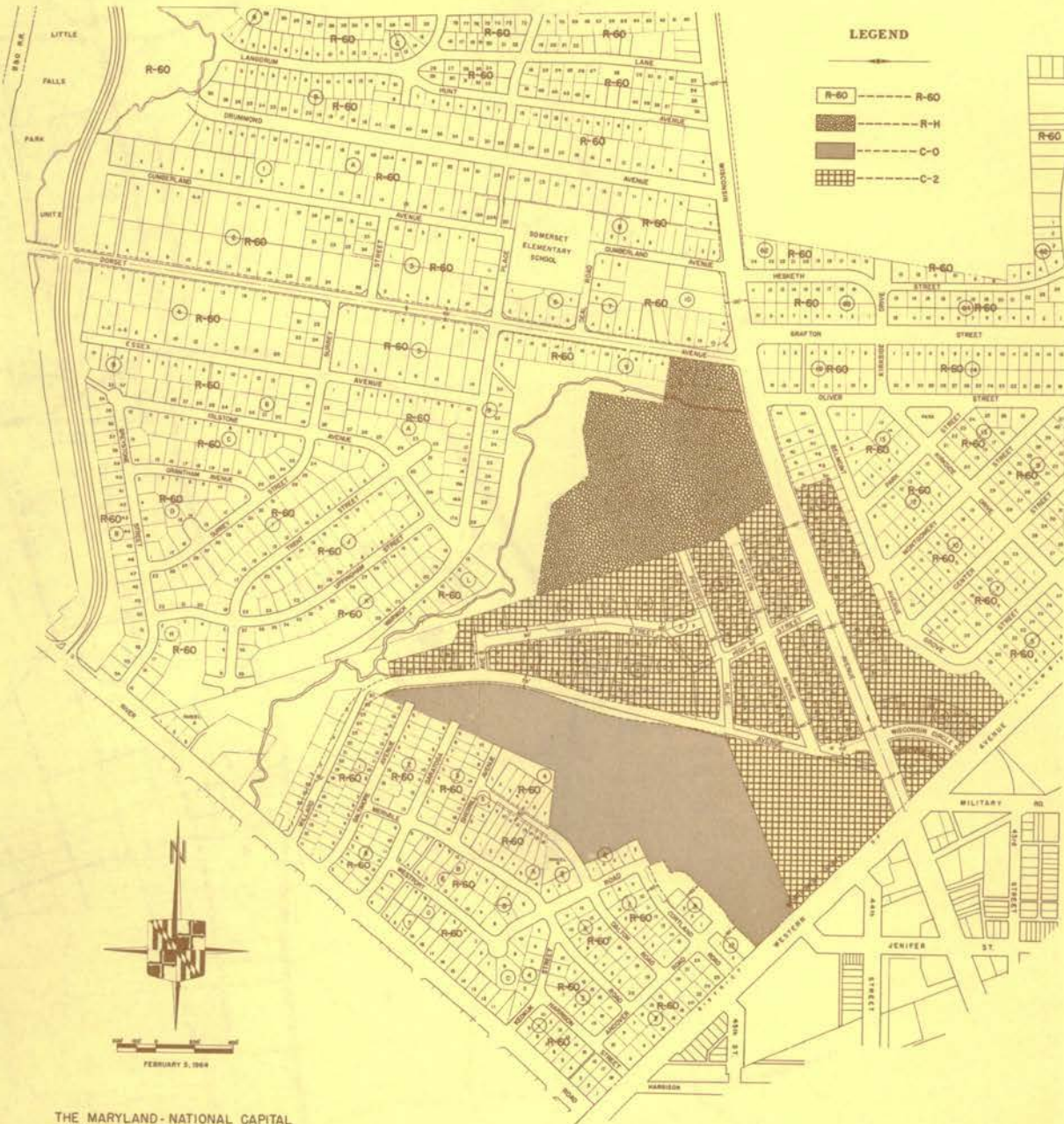
**NOTE:** The Commission adopted a General Plan for Montgomery and Prince Georges Counties in January, 1964.

# WEST CHEVY CHASE

NOW . . .



# ... AND AS PLANNED



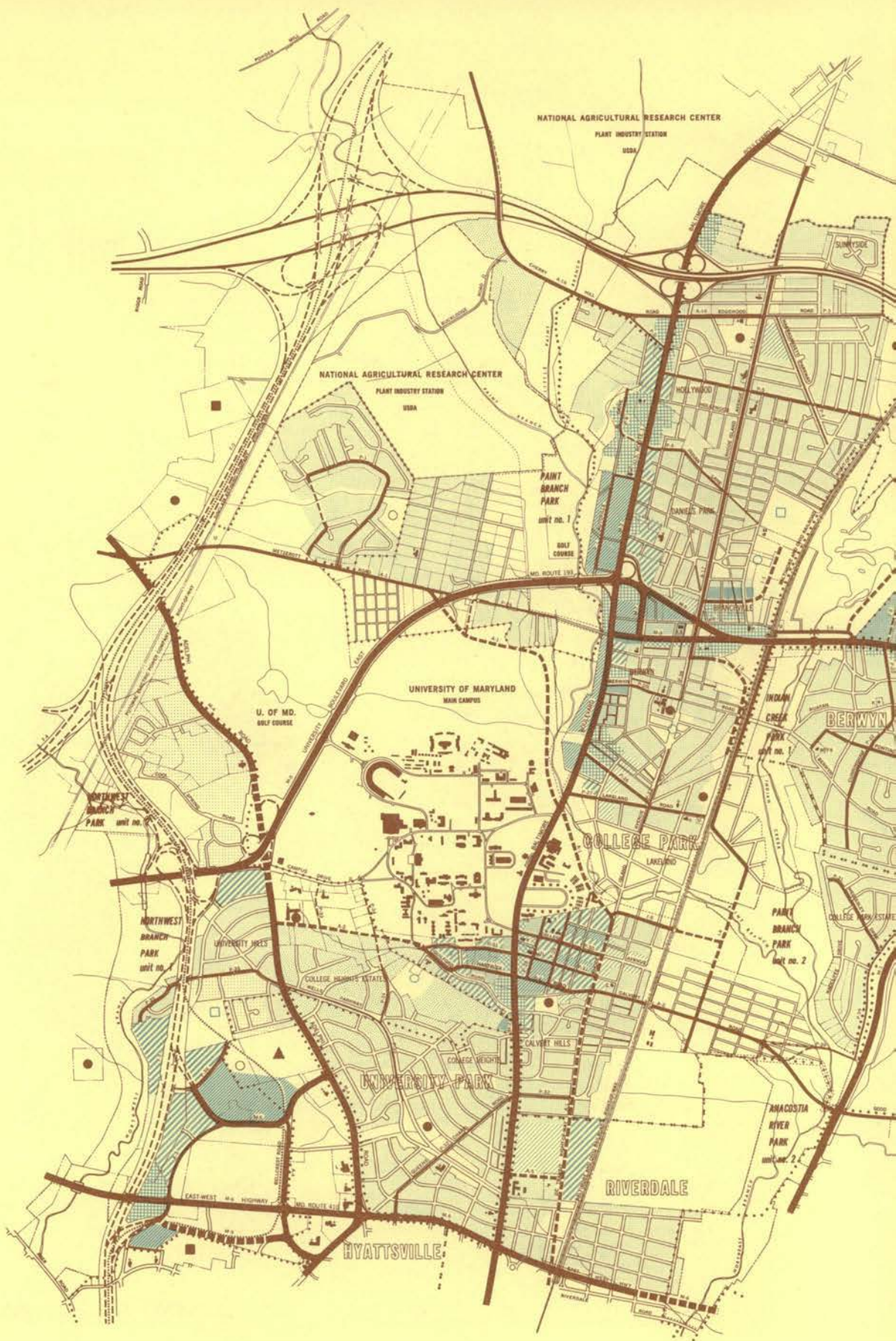
THE MARYLAND-NATIONAL CAPITAL  
PARK AND PLANNING COMMISSION  
MONTGOMERY COUNTY REGIONAL OFFICE  
SILVER SPRING, MARYLAND

DONALD E. SMERY  
 JOHN L. PILEZ  
 JOHN A. BRIDGEMAN  
 JOHN B. SCHMIDT  
 EVERETT B. JONES  
 JOHN B. LEUER  
 MRS. CAROLINE S. FRIELAND  
 MRS. RUSSELL WILTSCHKO

THIS PLAN IS A PART OF THE GENERAL PLAN FOR THE PHYSICAL  
 DEVELOPMENT OF THE MARYLAND-WASHINGTON REGIONAL DISTRICT  
 IN MONTGOMERY AND PRINCE GEORGES COUNTIES AND WAS ADOPTED  
 PURSUANT TO THE PROVISIONS OF CHAPTER TWO, LAWS  
 OF MARYLAND, 1920, BY RESOLUTION OF FEBRUARY 3, 1964 AFT-  
 ER A FULLY ADVERTISED PUBLIC HEARING HELD ON APRIL TWENTY  
 SEVEN, 1964.  
 JOHN A. BRIDGEMAN  
 JOHN B. SCHMIDT  
 JOHN B. LEUER  
 MRS. RUSSELL WILTSCHKO

**NOTE:**  
 Street intersections in commercially and industrially  
 zoned areas shall be designed to meet a way-in-to  
 the street or a sidewalk that shall be not less than  
 6 feet wide.

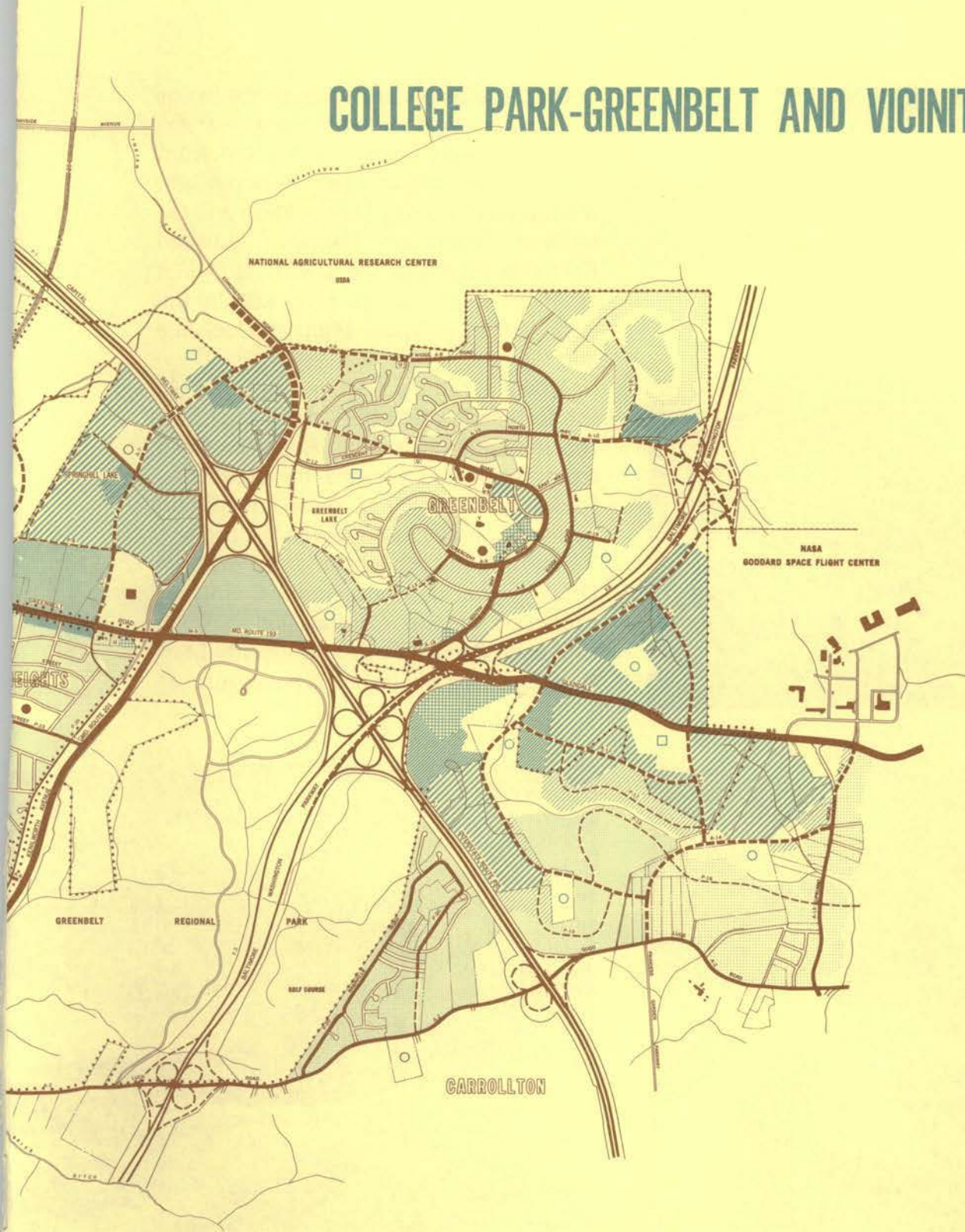
## ZONING & HIGHWAY PLAN FOR WEST CHEVY CHASE AND VICINITY MONTGOMERY COUNTY, MARYLAND



R • residential, one-family detached
R • 12 residential, one-family detached
R • 8 residential, one-family detached
R • 6 residential, one-family detached
R • 4 residential, one-family semi-detached & two-family detached
R • 3 residential, town houses & multiple-family, low density
R • 2 residential, multiple-family, medium density
R • R residential, multiple-family, high rise, medium-high density
R • 1 residential, multiple-family, high density
P • U • C planned urban center, commercial, by special exception
C • 1 transitional office building
C • 2 general office building
O • P office park
C • 3 convenience shopping



# COLLEGE PARK-GREENBELT AND VICINITY PLAN



highway classification			monopol boundary	
existing			proposed	
parkway			monopol boundary	
loopway			adopted park lake line	
major			U.S.A. boundary	
arterial				
primary				
local				

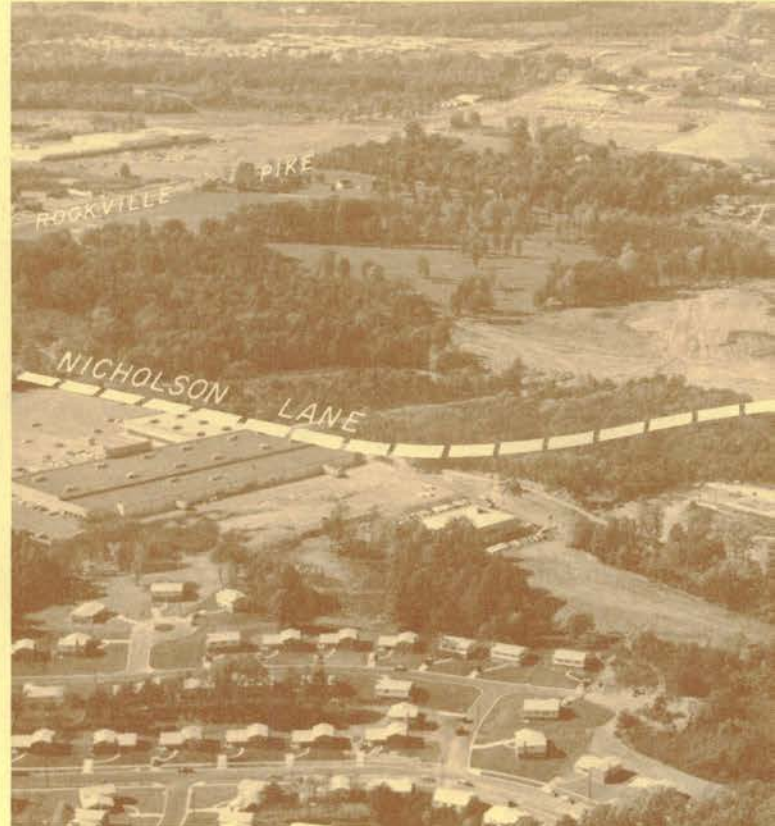
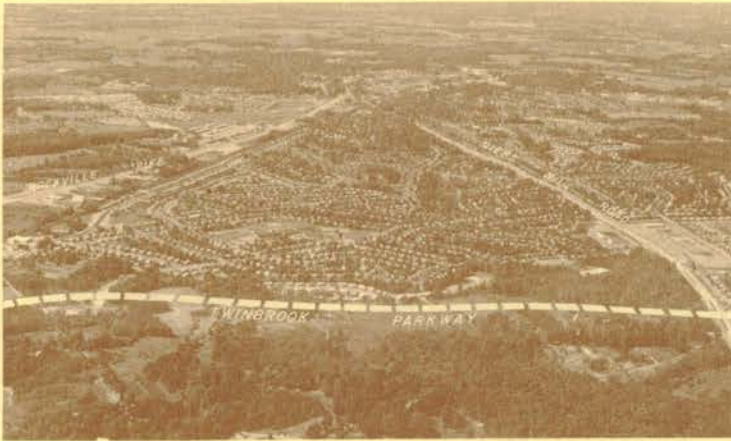
C-5 general commercial
C-6 highway commercial, independent
C-7 business service commercial
I-1 light industrial
I-2 general industrial
I-3 industrial park

# HIGHWAY PROGRESS

On these pages are some of the major highway projects, either underway or expected to start soon, which stem from Commission master plans. At upper left, Montgomery County is relocating and extending Twinbrook Parkway between Rockville Pike and Viers Mill Road just south of Rockville, as proposed in the Commission's Master Plan for Rockville and Vicinity.

To help relieve traffic congestion in the Bethesda area, the Commission has recommended extending Arlington Road from Bradley Boulevard to Little Falls Parkway, as shown at lower left. Montgomery County has approved the project.

Below is the Nicholson Lane-Parklawn Drive project in Montgomery County as proposed in the Commission's North Bethesda-Garrett Park and Vicinity Master Plan. This will involve a new overpass



at the Baltimore & Ohio Railroad, eventually replacing the present Randolph Road crossing. The county hopes to complete this project next year.

In Prince Georges County, the Commission's scheme for widening East-West Highway from the Baltimore Boulevard to East Riverdale as recommended in its Bladensburg-Defense Heights Master Plan is shown at top right. Also contemplated is a railroad overpass replacing the present grade crossing at Queensbury Road.

Relocation of Calvert Road in Prince Georges on a right-of-way proposed by the Commission is becoming a reality this year, as shown at bottom right. The new road being built by the county will tie into Good Luck Road at Kenilworth Avenue, eliminating the old dog-leg arrangement.



# ZONING PROGRESS

Recommendations for two new land use zones in Montgomery County and for changes to three Prince Georges County zones highlighted the Commission's zoning activities during the year.

In addition, the Commission suggested limiting the period for filing zoning applications in Prince Georges County. The proposals were adopted by the governing bodies of both counties, which have final zoning authority.

The Commission also gave advisory opinions on 320 zoning petitions in Montgomery County and 569 in Prince Georges County. These compare with 206 zoning advisory opinions in Montgomery and 533 in Prince Georges during the previous year.

## TOWN HOUSE R-T

The Town House zone is intended primarily to ease the transition between high density developments, such as commercial centers and apartments, and nearby single-family detached home areas.

It also would help carry out purposes of the General Plan, which calls for concentrating population as much as possible around commercial and employment centers.

This new zone permits one town house for every 3500 square feet of land. Not more than eight attached town houses are permitted in one continuous group.

## PLANNED RETIREMENT COMMUNITY P-R-C

This allows the development of a comprehensive community for the elderly, with a wide variety of residential, commercial, cultural and recreational facilities.

The area involved must be at least 750 acres and the minimum age for residents is 52.

In applying for this zone, the prospective developer also must file a site development plan showing the general locations of all buildings, recreation areas, roads and parking facilities, along with the topography showing woods and streams.

More detailed sectional use plans must be submitted before building permits can be issued.

## APARTMENTS R-18 GARDEN R-10 HIGH DENSITY

Changes in these two Prince Georges County zones provide more green space and greater flexibility in construction.

An R-18 development now requires 55 per cent green space as compared with none previously. And the building height limit has been changed from 40 feet to 36 feet if the property is less than 5 acres and 80 feet for tracts 5 acres or more.

In the R-10 zone, the required green area is 50 per cent of the development

as compared with none previously. And the height limit has been raised from 72 feet to 110 feet. Parking space requirements have been increased in both zones from 1 space per apartment unit to 1¼ spaces per unit.

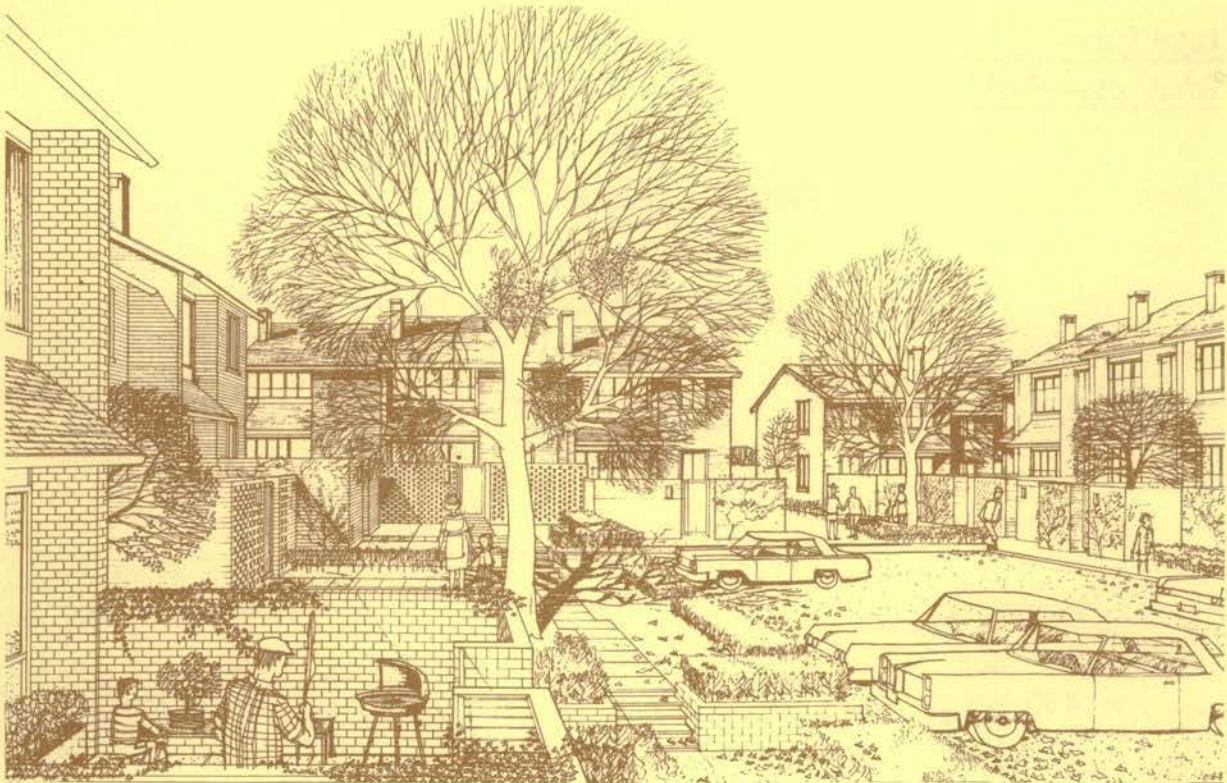
### **JUNKYARD RESTRICTIONS**

These limit junkyards to industrial zones only after special exceptions have been granted by Prince Georges County. Before, they could be operated without special exceptions in industrial zones.

### **CHANGES IN FILING REZONING REQUESTS**

Zoning applications may be filed only during January and July. Filing was permitted at any time during the year under the old system.

In addition, the filing fee was raised from a minimum of \$63 to a flat \$75 and the applicant must wait at least 18 months to refile if his application is denied. Previously, the waiting period was one year.

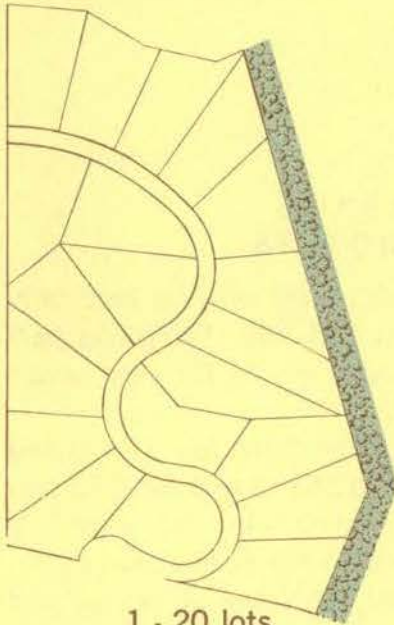


Town Houses

# SUBDIVISION PROGRESS

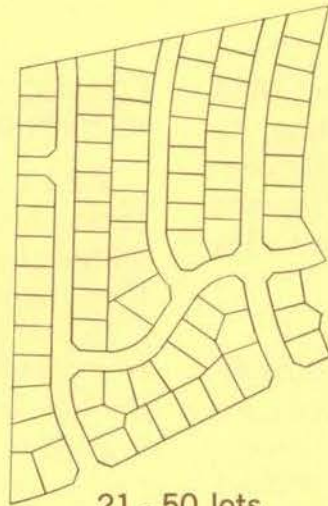
## PLANS PROCESSED

### MONTGOMERY COUNTY



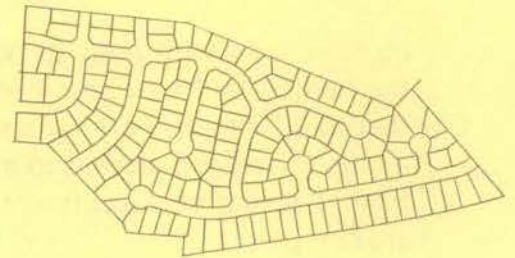
1 - 20 lots

Totals: 211 plans  
901 lots



21 - 50 lots

30 plans  
847 lots



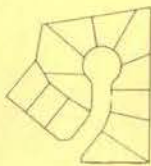
51 lots and over

29 plans  
4,787 lots

Total Plans—270

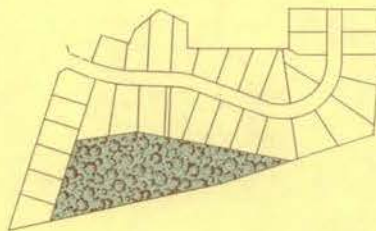
Total Lots—6,019

### PRINCE GEORGES COUNTY



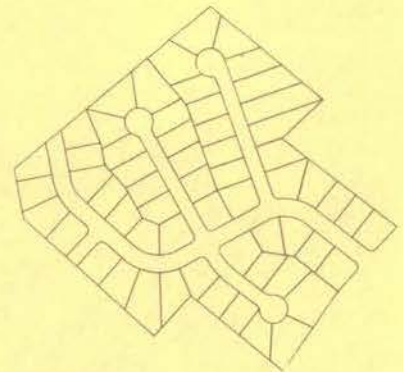
5 - 20 lots

Totals: 48 plans  
495 lots



21 - 50 lots

25 plans  
779 lots



51 lots and over

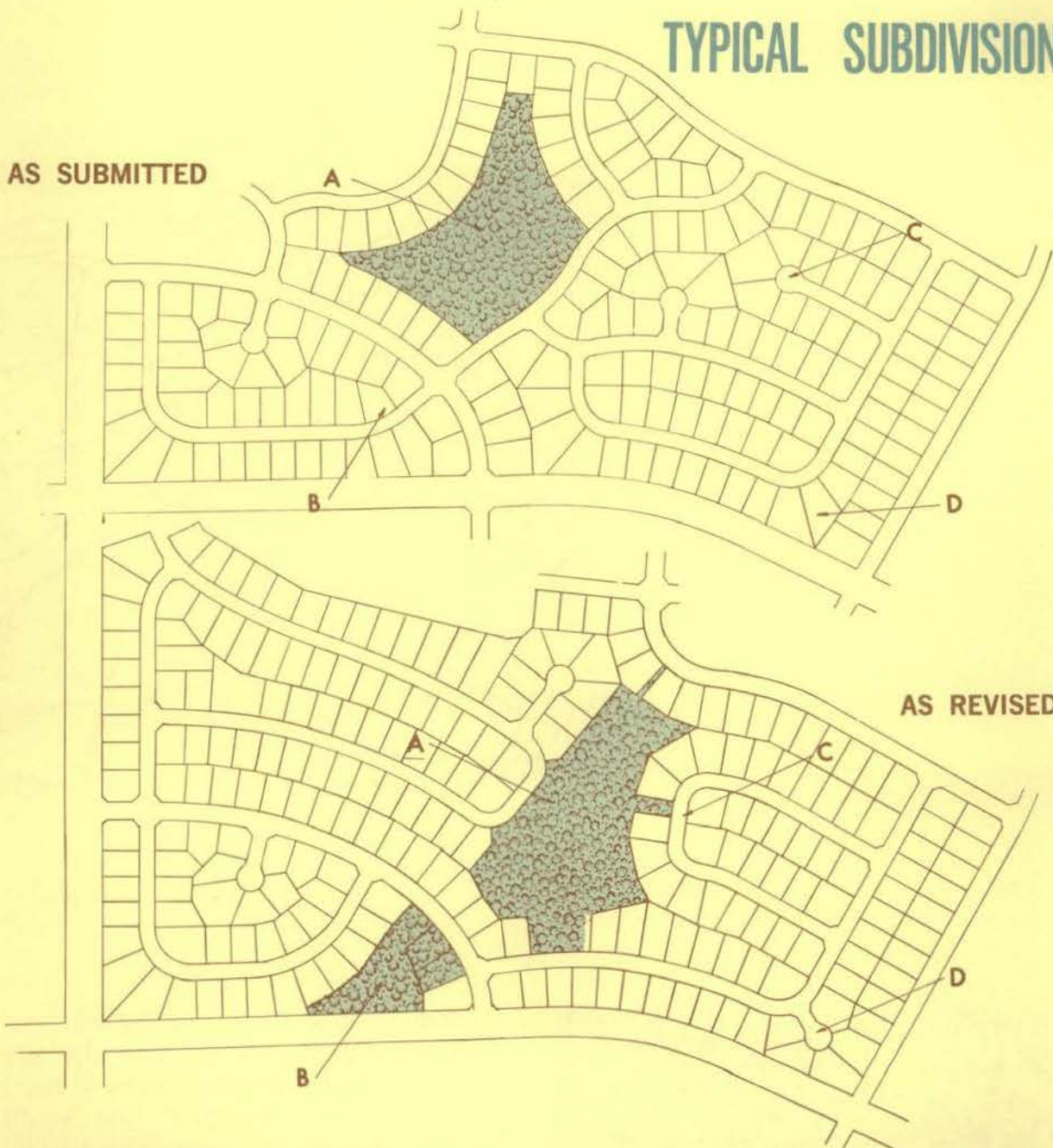
46 plans  
5,276 lots

Total Plans—119

Total Lots—6,550

## TYPICAL SUBDIVISION

AS SUBMITTED



AS REVISED

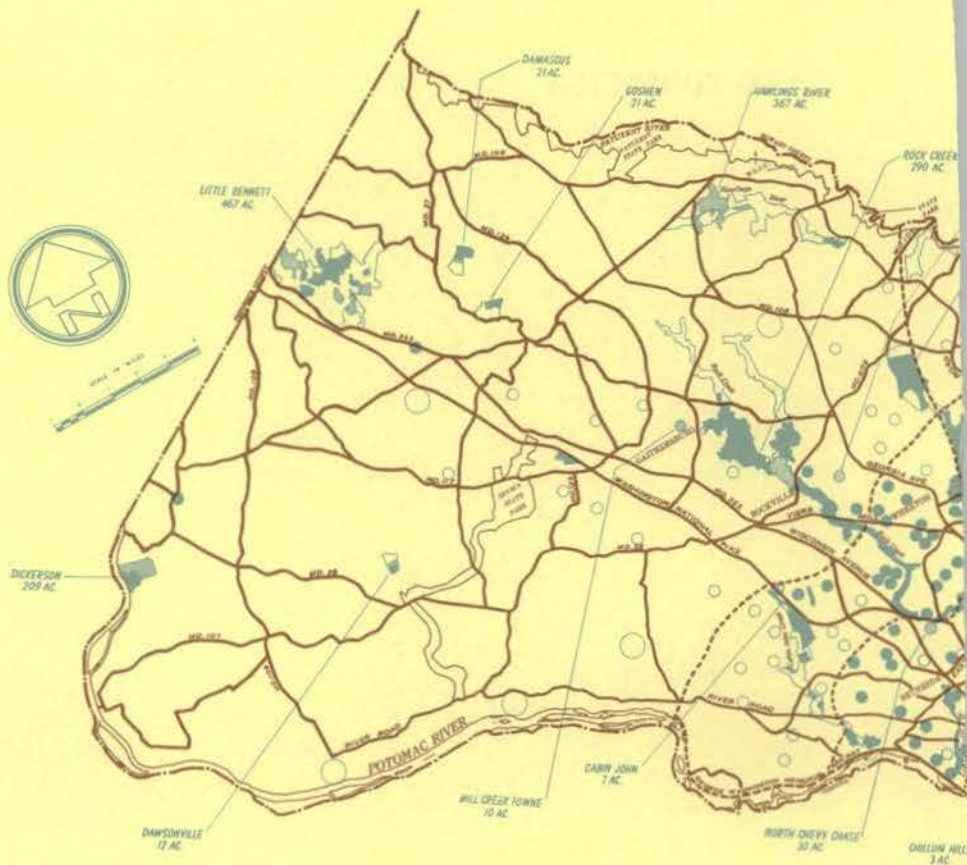
- A—Local park site was revised to provide a more useful recreation area.
- B—Second small park site was combined with larger park to the north so street pattern could be improved for better traffic circulation.

- C—Cul-de-sac was eliminated and through street revised to give better circulation and access to park.
- D—Street pattern was changed to improve lot layout and traffic movement.

The Commission's land design engineers frequently change subdivision plans submitted by developers to improve street and lot design as well as to reserve park and school sites.

Above are examples.

# PARK PROGRESS



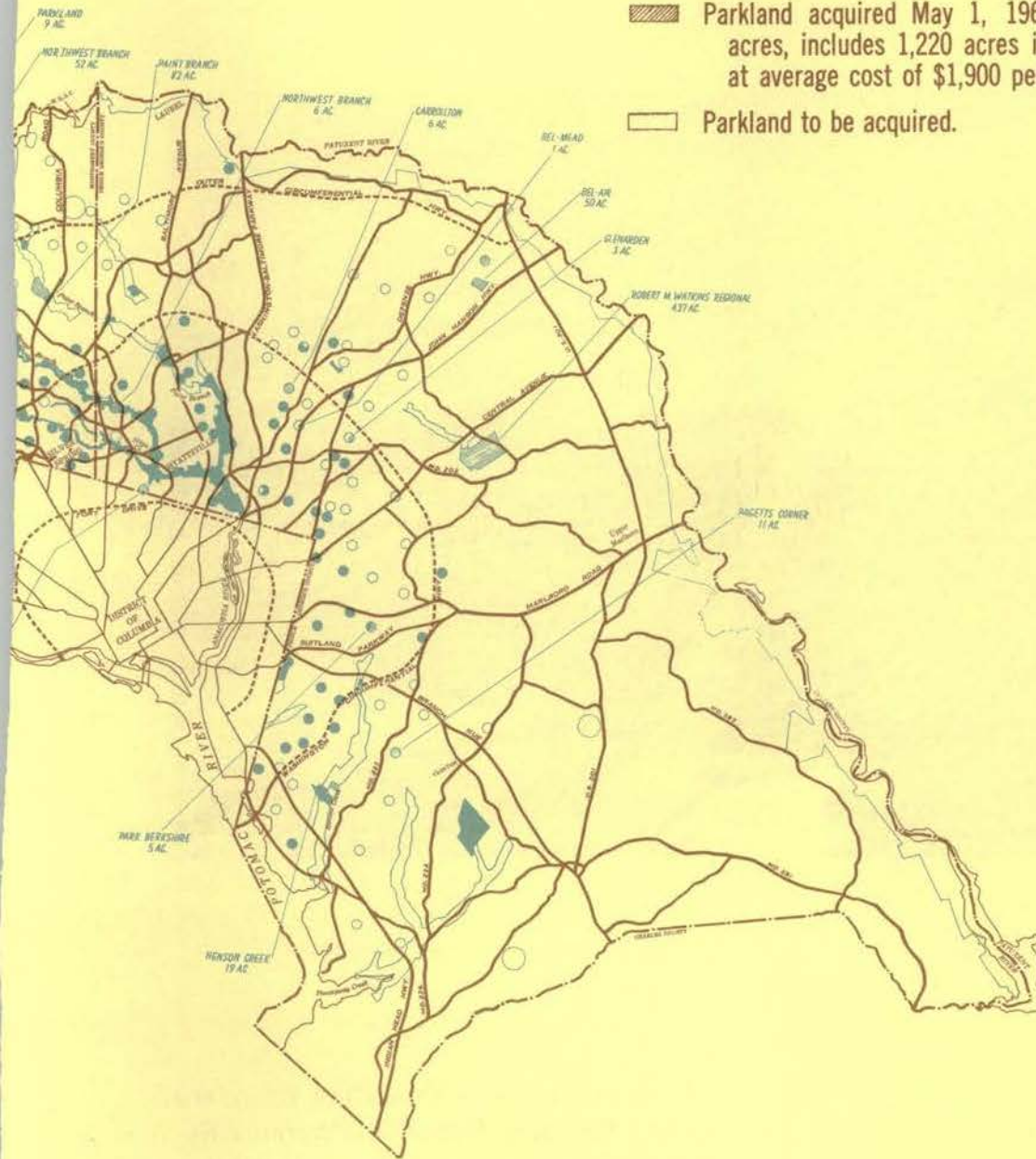
Commission Chairman William J. Stevens inspects the deed to the site on which the Commission plans to build Prince Georges County's first youth center. The one-acre tract along Adelphi Road, adjacent to the new county regional library, was donated by the Bancroft Construction Co. represented here by Herschel Blumberg, who is presenting the deed, and his brother, Marvin. Looking on are County Commissioner Jesse S. Baggett (left) and Lawrence G. Manuel (right), the Commission's associate director of parks. In the background is the Bancroft firm's Federal Building.



# ACQUISITION

## LEGEND

- Parkland acquired before May 1, 1962—7,234 acres
- Parkland acquired May 1, 1962-April 30, 1963—3,084 acres, includes 1,220 acres in Rock Creek watershed at average cost of \$1,900 per acre.
- Parkland to be acquired.



Parkland acquired before May 1, 1963—10,318 acres. Parkland acquired May 1, 1963—April 30, 1964—2,118 acres. Parkland to be acquired.

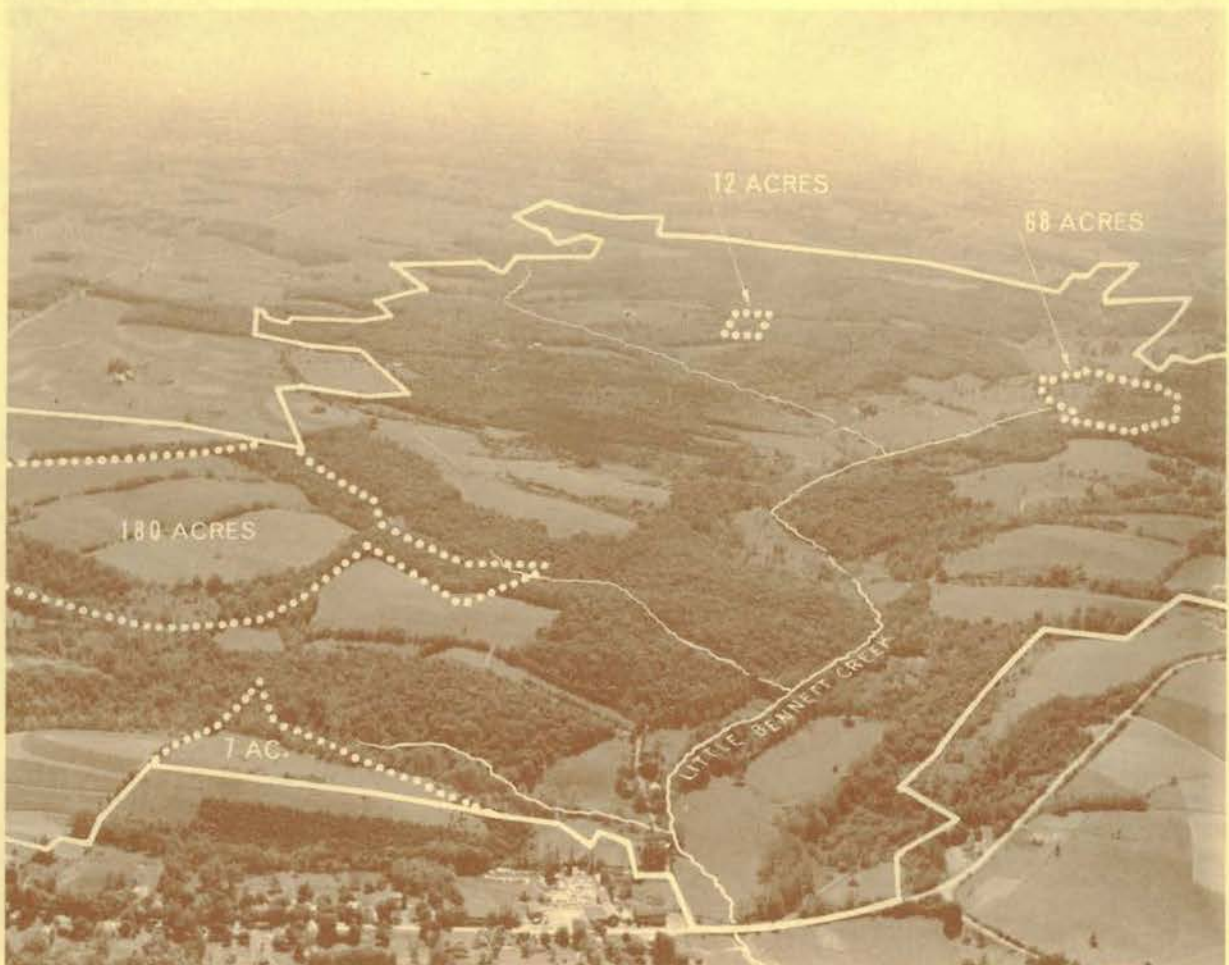
## PARK PROGRESS



The outline area shows the boundary of the 437-acre Robert M. Watkins Regional Park acquired by the Commission last year. The park, near Largo in Prince Georges County, was named for one of the Commission's former chairmen, who died in 1954. Another 500-acre regional park near Clinton was purchased during 1962-63.

## ACQUISITION

Solid line shows nearly all of the 3,000 acres in the Clarksburg-Hyattstown area of Montgomery County which the Commission plans to acquire as the Little Bennett Regional Park. Within this area, the Commission already has bought approximately 1,000 acres. The dotted lines enclose most of the portions purchased during the past year.

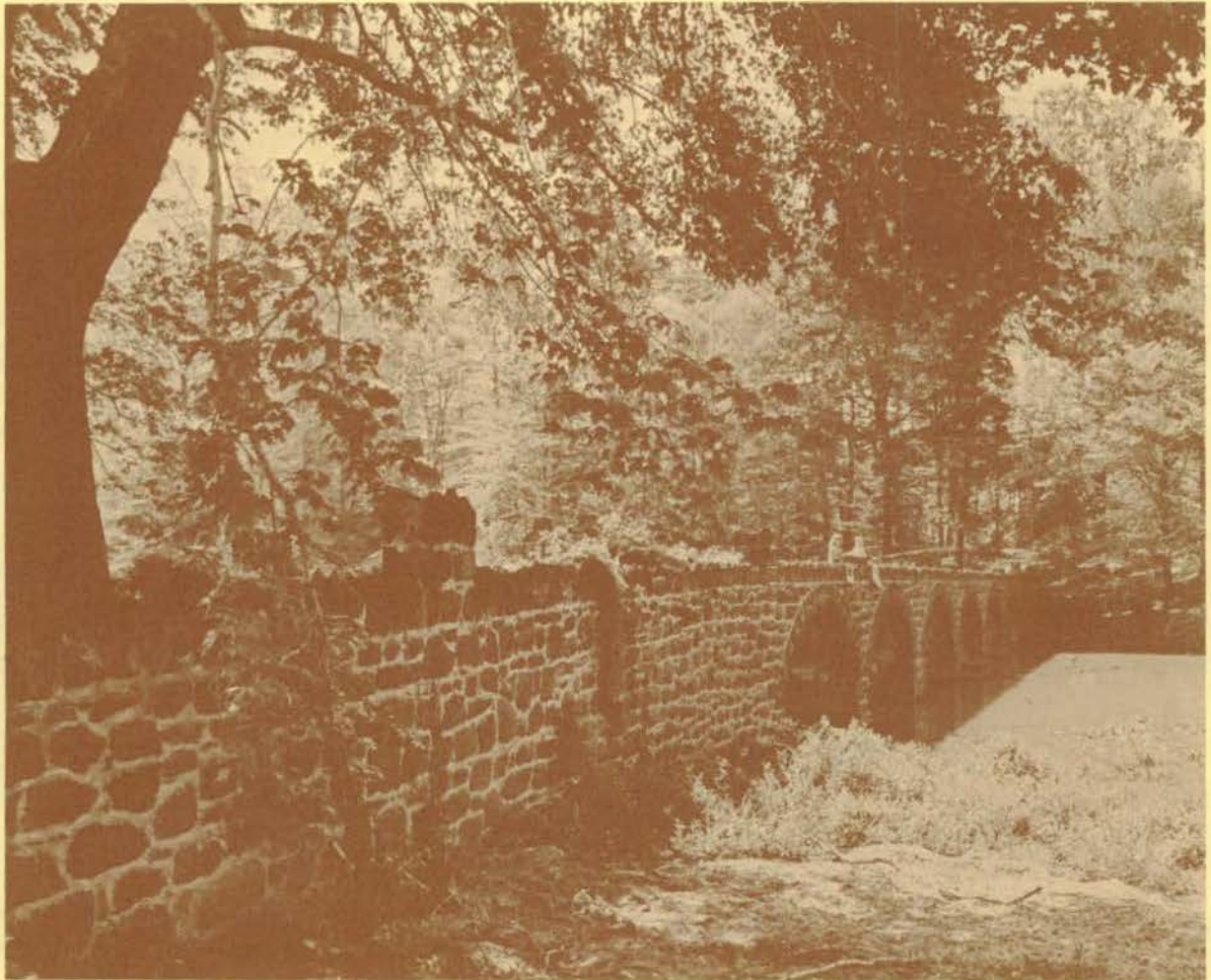


## PARK PROGRESS

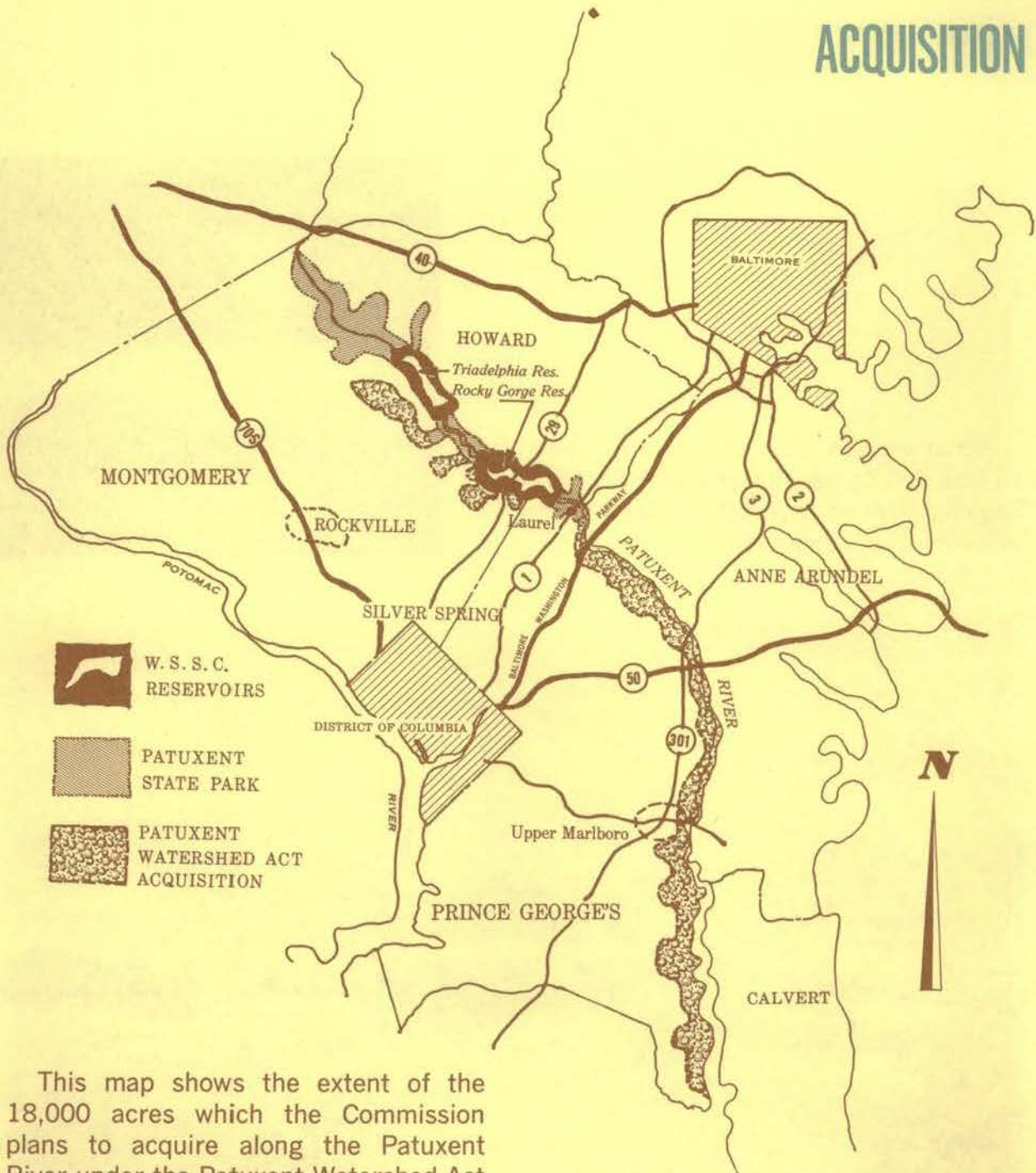


Commission Chairman William J. Stevens accepts the deed to nearly 50 acres of parkland in the fast-growing Belair community in Prince Georges County from James P. Lee, representing Levitt and Sons, which donated the land. Looking on is Commission Vice-Chairman J. Newton Brewer, Jr.

Below is a general view of the lake and the century-old stone bridge in one of the parks. The other adjoins the area's new Somerset Elementary School.



# ACQUISITION



This map shows the extent of the 18,000 acres which the Commission plans to acquire along the Patuxent River under the Patuxent Watershed Act acquisition. Half the cost of the land will be paid by the State.

Other areas along the river are owned by the Washington Suburban Sanitary Commission adjacent to its reservoirs. In addition, the State plans to acquire land along the northern portion of the river.

# PARK PROGRESS

Aerial view of the Commission's new 18-hole golf course in Northwest Branch Regional Park off Layhill Road about four miles north of Glenmont.



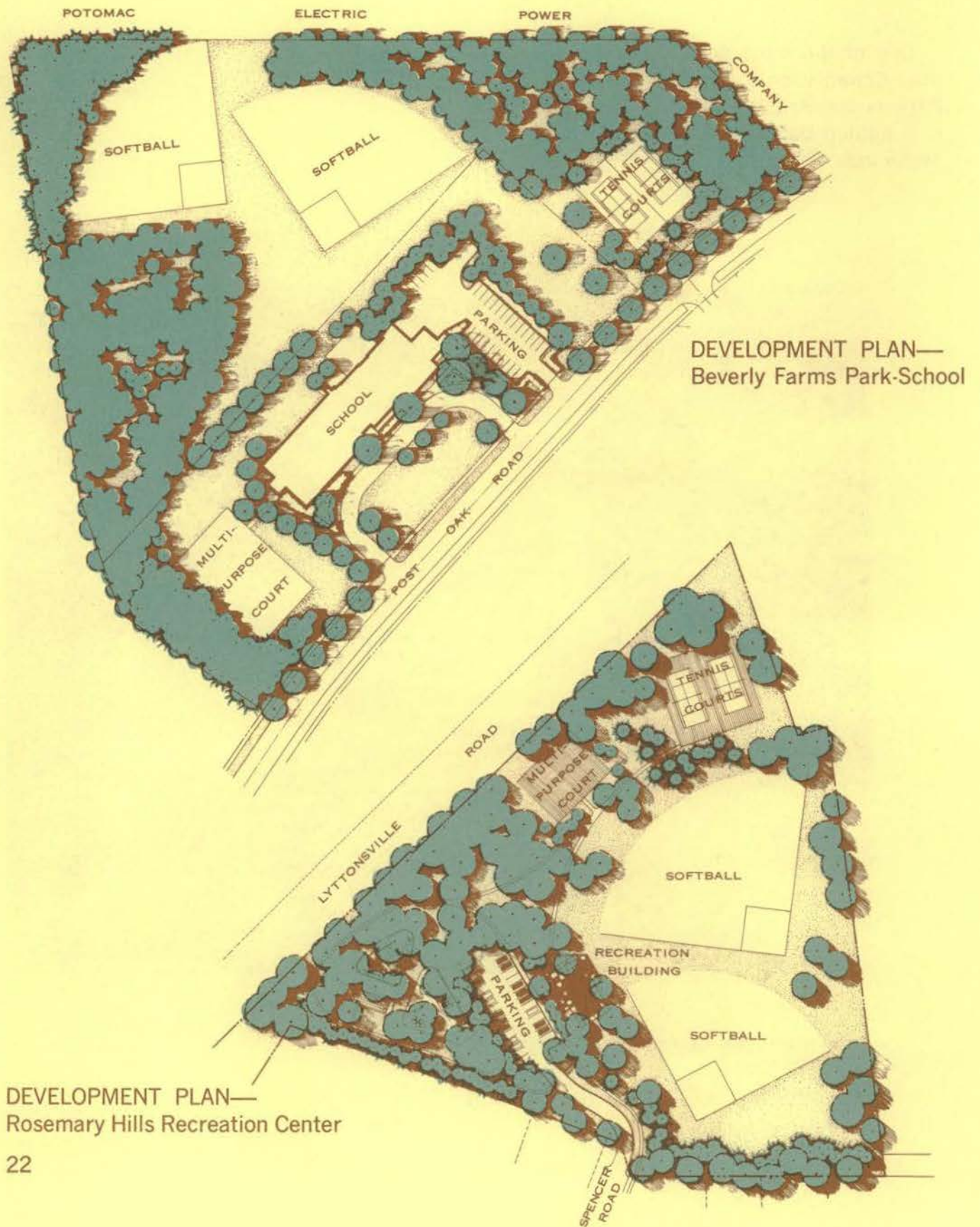
## DEVELOPMENT

One of the most popular sections of the Commission's Wheaton Regional Park is the Arcola athletic area. Here is a lighted ballfield receiving its usual heavy use.



Another new Commission golf course is this 9-hole course in Henson Creek Park about a mile south of Rosecroft Raceway in Oxon Hill.

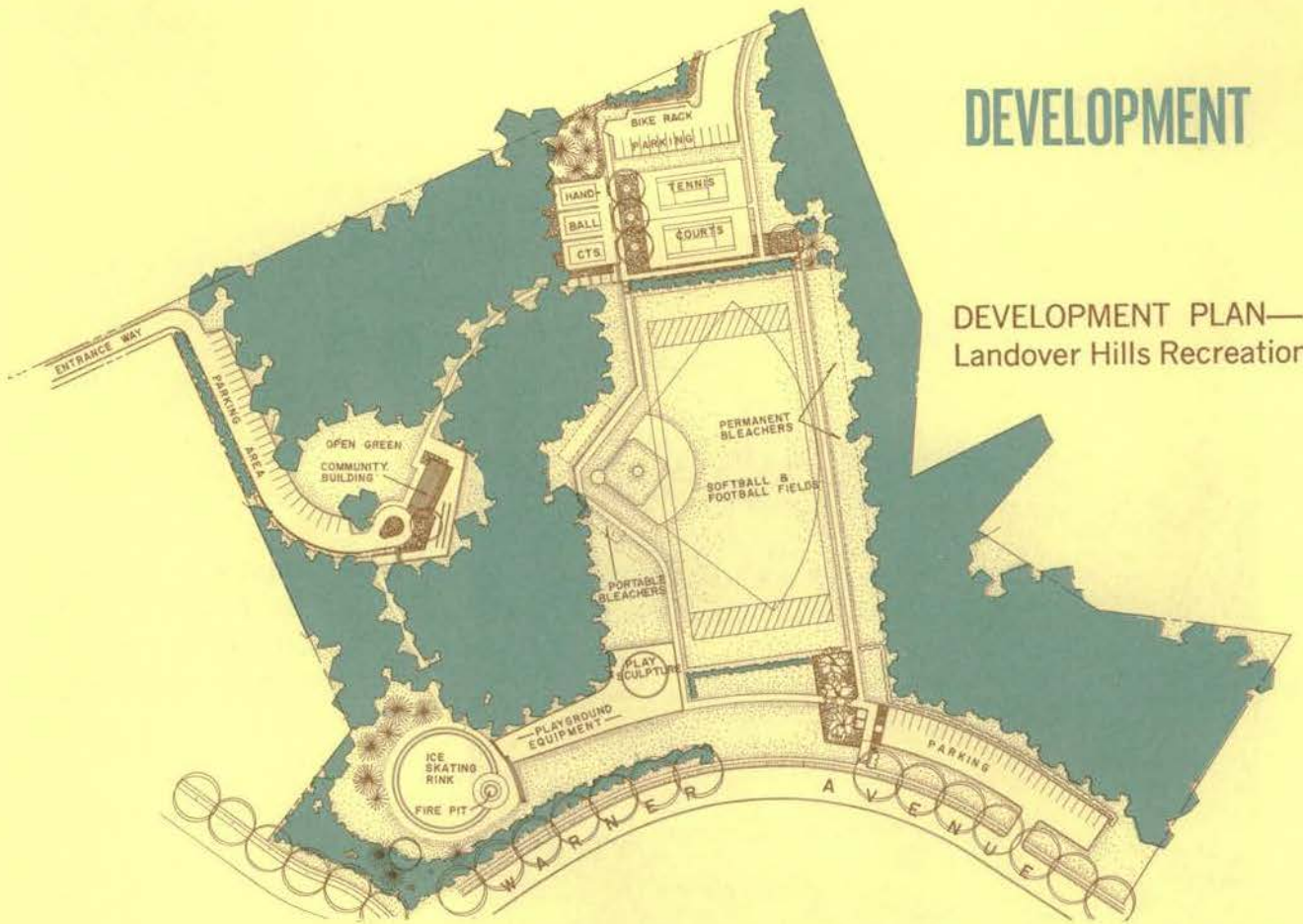
# PARK PROGRESS



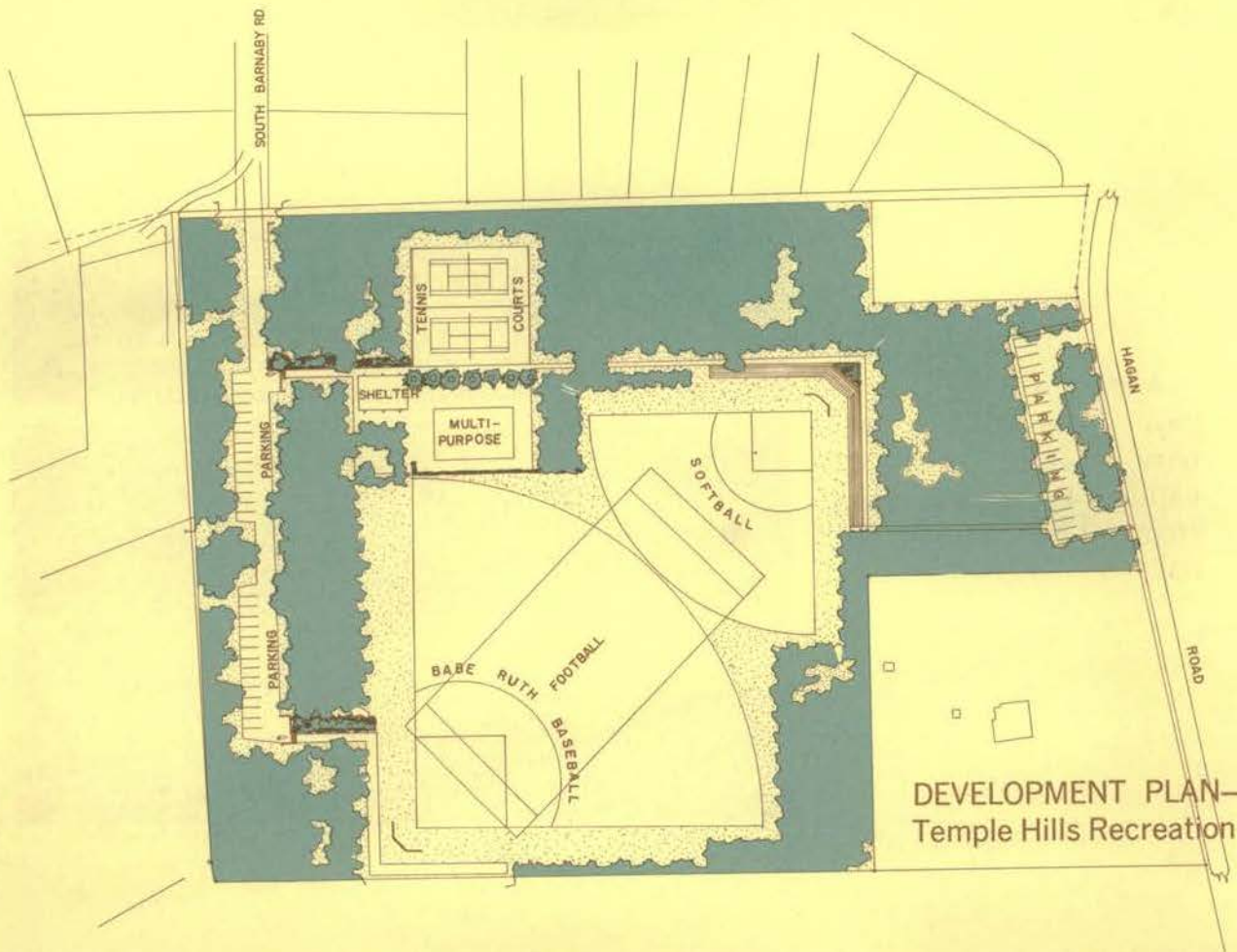
DEVELOPMENT PLAN—  
Rosemary Hills Recreation Center



# DEVELOPMENT



DEVELOPMENT PLAN—  
Landover Hills Recreation Center



DEVELOPMENT PLAN—  
Temple Hills Recreation Center

## PARK PROGRESS



Work begins in the fall of 1962 on a 5-acre lake in Wheaton Regional Park. The dam is in the background.

And here is the lake today. It is stocked with bass, bluegill, carp and catfish. Fishing hours are from 10 a.m. to sundown daily.



## DEVELOPMENT

This is how the 32-acre Arcola athletic area in Wheaton Regional Park looked before work began three years ago.



The same area today, with 12 tennis courts, six ballfields (two lighted), a multi-purpose court and four handball courts. Parking is available for 225 cars.

# PARK PROGRESS

Fort Foote  
Recreation Center—  
Before . . .



. . . and after

## DEVELOPMENT



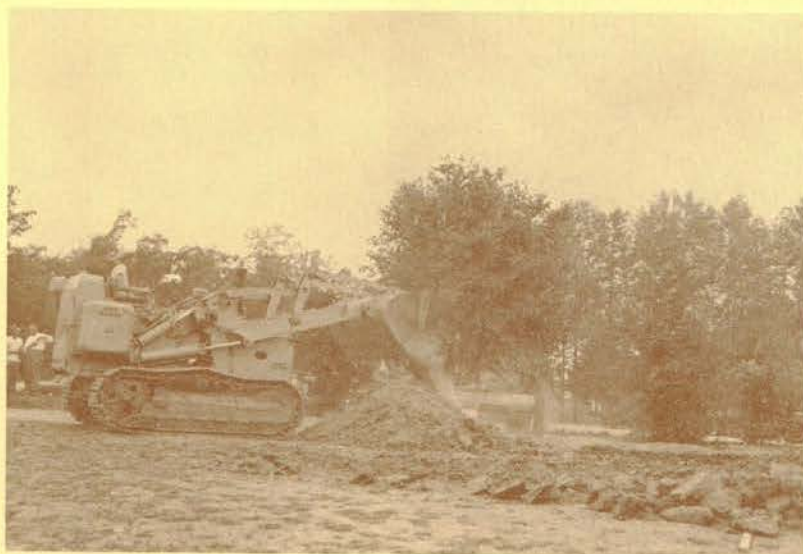
Morningside Recreation  
Center—  
Before . . .

. . . and after



## PARK PROGRESS

A 20-year-old American beech, with a ball of earth seven feet in diameter, is hauled to Wheaton Regional Park.



A Commission bulldozer digs a hole for the tree, the largest ever planted in the Commission's park system.

The bulldozer pulls the tree off the trailer and

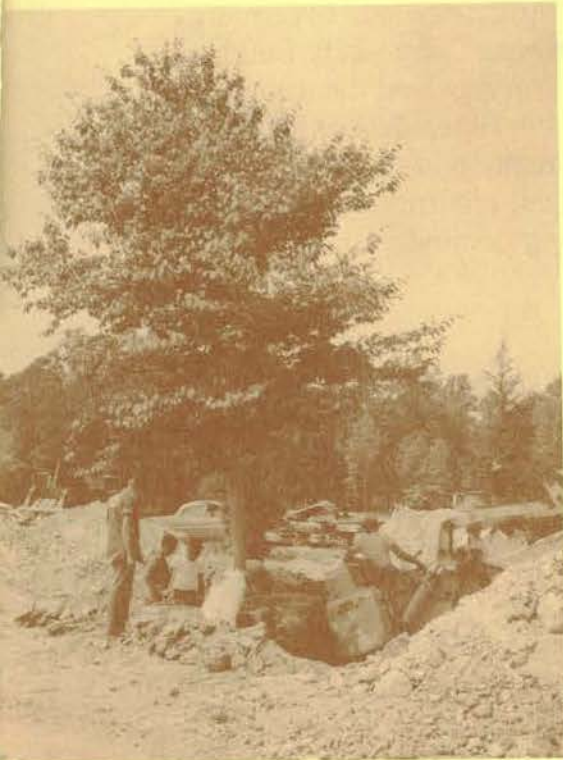


## DEVELOPMENT

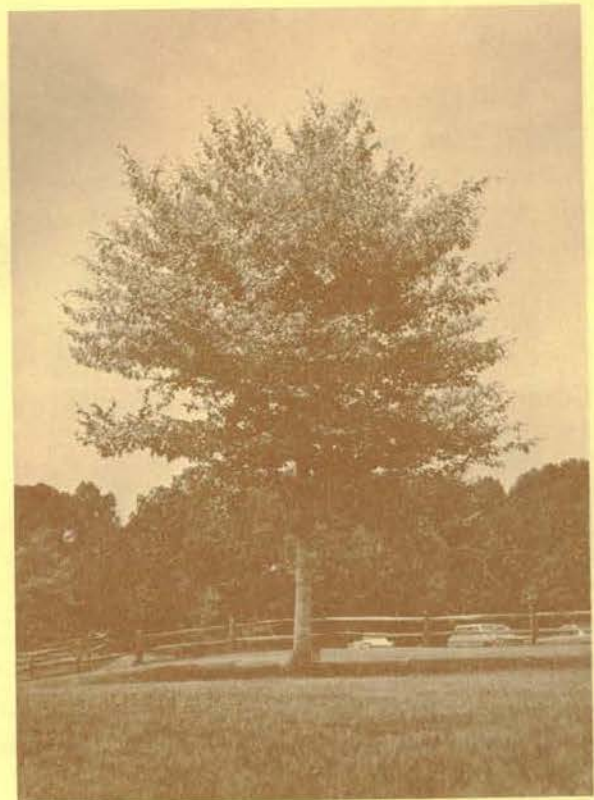
. . . Into the hole. The beech was taken from the Capital Beltway between Connecticut and Wisconsin Avenues. It would have been destroyed in the reconstruction and widening of the beltway.



Now the tree is in place and workmen prepare to fill in the hole.



Here the tree flourishes in its new, permanent location adjacent to the miniature railroad in the park.



## COMMISSION ACTIVITIES

To encourage builders to preserve trees and natural terrain in their housing developments, the Commission annually sponsors Subdivision of the Year awards. Here are the Montgomery County winners:



(Left to right) J. Newton Brewer, Jr., chairman of the Montgomery County Planning Board; Carl M. Freeman, who received the award for his Americana Glenmont apartments; former County Council President John A. Floyd; Herman Greenberg, whose Community Builders firm received the award for the Tilden Woods development, and Warren J. Vinton, chairman of the judging committee.

In Prince Georges County, the award went to William P. Martin and Son for the Martin Park subdivision in the Oxon Hill area. Frank J. Lastner, chairman of the Prince Georges Board of County Commissioners, (left), presents the award to Mr. Martin as Mrs. Martin stands by. Looking on (back row) are Herbert W. Wells, former chairman of the Park and Planning



Commission; Thomas Watts, past president of the Prince Georges Chapter, Metropolitan Washington Home Builders Association; John M. Marburger, jr., county public works administrator, and C. Warren Giaugue, Commission planning engineer. The latter three were contest judges.





A group of citizens inspect some of the Commission's plans and maps at the agency's exhibit in the Prince Georges County Fair and Showcase last year.

Eleven-year-old Edward Rest, Cabin John, receives an award from John P. Hewitt, the Commission's director of parks, for catching the first fish at the fishing season opening at Pine Lake last year in Wheaton Regional Park.



Park Director Hewitt explains the Commission's park responsibilities to park patrolmen enrolled in the Commission's In-Service Training School. Left to right, seated: Pvt. Bill Paxson, Corpl. Albert E. Gill, jr., Pvt. Charles Prichard and Lt. Lewis Butt. Standing, left to right: Pvt. Bill Gordon, Pvt. Alfred J. Henderson, Pvt. Joseph Van Matre, Corpl. Scott Whitworth, Pvt. Cliff Duffv. Sergt. Reed Thompson and Pvt. Frank Soper.

# PUBLIC OPINION

VASSAR COLLEGE  
PO BOX 1000  
Office of Public Affairs

April 7, 1964

Mr. Joshua Zeiman  
National Park and Planning Commission  
Montgomery County Regional Office  
8787 Georgia Avenue  
Silver Spring, Maryland

Dear Mr. Zeiman:

On behalf of the Vassar student and family group we wish to thank you and the Commission staff for the most enlightening tour of developments in Montgomery and Prince George's County which you arranged as part of our Washington Seminar. There is nothing like covering the ground personally to clarify preconceptions. The students found themselves thinking of their own suburbs from quite a different perspective.

We were all impressed with the Commission's park acquisition and development policies, and hope you will be able to execute them fully as the County develops.

It was a great privilege to be personally able to conduct a running interview with you during the day's drive, at a cost, I daresay, of considerable strain to the driver. It provided us with invaluable insight into some of the economic secrets of urban sprawl with which I have had little more than a last look acquaintance, and I am deeply grateful for your clarity and candor.

Please extend our appreciation to your colleagues, especially to Mr. James Collins and Mr. Alfred Smith.

Sincerely,

*Edna C. Mazonson*  
Edna C. Mazonson  
Professor of Economics

LEAGUE OF WOMEN VOTERS OF  
PRINCE GEORGE'S COUNTY, MARYLAND

June 15, 1964.

Maryland-National Capital Park and  
Planning Commission,  
4111 Riverdale Road,  
Riverdale, Maryland.

Gentlemen:

The League is grateful indeed for the effort you so generously expended in our "see Prince George's County" trip last Thursday. In addition to providing transportation facilities and tailoring the itinerary to our specifications, articulate Mr. Joshua B. Zeiman, who answered our many and varied questions with a truly impressive command of facts and figures for the Commission.

We consider this trip an appropriate and enlightening prelude to our proposed study of planning and zoning needs for the orderly development of our county.

President Hill joins me in expressing our sincere thanks for the Commission assistance which made this pleasant trip possible.

Sincerely,

*Mrs. Mervin Phelps*  
Mrs. Mervin Phelps,  
Committee Chairman.

W/P

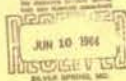


WETA-TV Channel 26

THE GREATER WASHINGTON EDUCATIONAL TELEVISION ASSOCIATION, INC.

3344-3352 28th Street, N.E. Arlington 7, Virginia - 22206

June 8, 1964



Mr. John F. Hewitt, Director of Parks  
Maryland-National Capital Park and  
Planning Commission  
8787 Georgia Avenue  
Silver Spring, Maryland

Dear Mr. Hewitt:

On behalf of all of us at WETA-TV, I want to thank you again for your cooperation in producing the program on baby farm animals on "Watch on Our World".

It was very kind of you to take time from your busy schedule to come to the studio, and we all enjoyed meeting you. The interest with Mr. Dorney and Mr. Whetzel, Park Naturalists, and young farm animals from Old MacDonald's Farm was one of the most fascinating of our series this year. It was viewed by many hundreds of children in our sixteen school districts and at home.

We appreciate the interest and efficient assistance of Mr. Zeiman, of your staff, in helping to plan and carry through this project.

Again, thank you for this contribution to educational television!

Very sincerely,

*Marygrove Blackburn*  
Marygrove Blackburn  
Media Teacher

Kilhamy  
cc: Mr. Zeiman  
Mr. Dorney  
Mr. Whetzel

COOPERATIVE EXTENSION SERVICE

UNIVERSITY OF MARYLAND  
COLLEGE PARK, MARYLAND

154 Old Courthouse  
Rockville, Maryland 20850  
May 27, 1964

Mr. Joshua Zeiman  
Public Relations  
Maryland-National Capital Park and Planning Commission  
8787 Georgia Avenue  
Silver Spring, Maryland 20910

Dear Mr. Zeiman:

Many, many thanks for the excellent tour of Park & Planning projects last week. The Extension Service community leaders on the bus represented a cross section of County residents--rural, urban, and fringe. Your commentary was a real education for all of them.

Here are some of their comments expressed during, after, and since the trip: "It wasn't over that the Park & Planning program involved all these projects." "We like what we see and approve." "I thought this trip was a waste of taxpayers' money, but I understand now that it is truly educational." "We need teenage centers in Dumasco like those (Bethesda and Wheaton)." "What Rockville had better facilities for teenagers--why can't we be part of this program?"

This group voiced its approval, just as other groups that have taken the tour previously have brought back glowing reports. We feel it's a community service to alert the citizens to the area problems and advantages.

We, as Extension Agents, were pleased with the opportunity to observe the scope of your operations. From time to time we use the Park & Planning facilities for Extension meetings and demonstrations, but we've never seen anything that is available. Thanks again for a very helpful day!

Sincerely,

*Catherine M. Rhoads*  
Catherine M. Rhoads  
(Mrs.) Catherine M. Rhoads  
Extension Agent, Home Economics

*James P. Elliott*  
James P. Elliott  
Extension Agent, Home Economics

JCR-CHS/eld



**Lincoln-Vista Civic Association**  
Lanham, Maryland

Mailing Address:  
9713 Annapolis Rd.  
Lanham, Md.  
July 31, 1963

Mr. J. S. Katzman  
Director, Public Relations  
The Maryland-National Capital  
Park and Planning Commission  
8787 Georgia Avenue  
Silver Spring, Md.

Dear Mr. Katzman,

Your agency's tour of the public parks and highways in Prince George's and Montgomery counties is a commendable program.

This tour is a good program to acquaint the citizens with the various recreational parks and facilities that are available to us. It is our hope that the Commission will continue to progress and that provisions and improvements will be possible in some of the less developed communities.

We would also like to express our appreciation for your courtesy and co-operation as a most efficient and capable guide during our tour on Friday, July 26th.

All persons who accompanied us on the tour expressed their pleasure and enjoyment of the trip, and an appreciation of such foresight and planning, we shall certainly hope to take full advantage of these facilities that the Commission has provided for us.

Sincerely yours,  
*Opheia M. Singletary*  
Opheia M. Singletary  
Corresponding Secretary

JAMES J. HAYDEN  
ATTORNEY AT LAW  
MURPHY BUILDING  
4200 MONTGOMERY AVENUE  
BETHESDA 14, MARYLAND  
PHONE 2-2421

September 4, 1963

Mr. Joshua Katzman  
Director of Public Relations  
Maryland-National Capital Park  
and Planning Commission  
8787 Georgia Avenue  
Silver Spring  
Maryland

Dear Mr. Katzman:

Thank you very much for the Annual Report of the Commission for 1962-63.

Perhaps the most distinctive characteristic of the Report is the attractive, yet artistic, form in which the data is presented to the public.

As Director of Public Relations I feel certain that you have contributed a great deal to the manner in which the Report is set forth and please accept my congratulations for the well-done presentation of the facts and figures which would have been uninteresting without the pictures and the written descriptions showing the accomplishments of the past year.

With kind regards, I am

Very sincerely yours,

JJH

*James J. Hayden*

11008 Kensington Blvd.,  
Kensington, Maryland  
May 22, 1964

Mr. J. S. Katzman  
Director of Public Relations  
The Maryland National Capital  
Park and Planning Commission  
8787 Georgia Avenue  
Silver Spring, Maryland

Dear Mr. Katzman:

I had the pleasure of joining the Homeowners of Montgomery County on a tour that you conducted of the Montgomery County Regional Parks and Recreational Centers yesterday. I want to let you know personally how much I thoroughly enjoyed every minute of it. Everything was so well organized and planned that there wasn't anything to complain about, even the weather cooperated by giving us the best.

Up to this time I had no idea that the Park and Planning Commission has played such a big part in the planning of the location of our schools, libraries, health centers, shopping centers, as well as the highways and highways. I can't figure out which I am sold on the most, the Planning Commission or the wonderful parks which you have developed so wonderfully. At any rate keep up the planning as we can see what splendid results have been accomplished in the past and we know that the future holds much better things after taking the tour yesterday. You can be very proud of your organization and what you are achieving.

Sincerely yours,

*Evelyn H. Hermann*  
Evelyn H. Hermann  
North Kensington Homeowner's Club

MRS. JOHN CHAPMAN WEEEDON  
8900 - 14TH STREET N.W.  
WASHINGTON 11, D. C.

May 20, 1964

Mr. William J. Stevens, Chairman  
Md. National Capital Park and  
Planning Commission  
Riverdale, Maryland

Dear Mr. Stevens:

Members of Emily Nelson Chapter, DC-DAB, deeply appreciate your kindness in permitting us to visit Montpellier on May 16 and hold our monthly meeting there. We thoroughly enjoyed leisurely visiting the mansion which is, as stated in the brochure, a visit to the past era of gracious living. For the members and their friends, I thank you for this courtesy.

Very truly yours,

*Rachel M. Weedon*  
Regent, Emily Nelson Chapter

# FINANCIAL STATEMENT



Representatives of Montgomery and Prince Georges Counties and the Mary-

land-National Capital Park and Planning Commission are in a thoughtful mood after signing \$4.5 million in bonds for the purchase of nearly 3,000 acres of parks in the two counties. Left to right: Commission Chairman William J. Stevens, Mrs. Mary A. Hepburn, president pro tem, Montgomery County Council; Robert F. Sutphin, acting chairman, Prince Georges Board of County Commissioners and Donald E. Gingery, acting vice-chairman of the Park and Planning Commission.

## THE MARYLAND-NATIONAL CAPITAL PARK AND PLANNING COMMISSION

### STATEMENT OF CASH RECEIPTS AND DISBURSEMENTS

FOR THE FISCAL YEAR MAY 1, 1963, TO APRIL 30, 1964, INCLUSIVE

#### ADMINISTRATION FUNDS - GENERAL

	Montgomery County	Prince George's County	Total
BALANCE - May 1, 1963	\$107,300.22	\$ 1,431.47	\$ 108,731.69
RECEIPTS:			
Tax Levy, 4½¢	\$ 21,132.78	\$ --	\$ 21,132.78
Tax Levy, 4¢	603,082.26	449,568.55	1,052,650.81
Tax Levy, 3¢	--	4.35	4.35
Preliminary Plans	8,658.00	10,790.25	19,448.25
Plat Fees	12,110.20	16,314.00	28,424.20
Recording Fees	1,041.00	2,015.00	3,056.00
Amendments - Zoning	--	28,215.00	28,215.00
Special Exceptions	--	780.00	780.00
Sale of Prints and Maps	11,042.03	7,511.37	18,553.40
Sale of Topographic Maps	9,933.82	1,120.80	11,054.62
Sale of General Plan	91.25	--	91.25
Reimbursement - Expenses	549.06	2,778.43	3,327.49
Rent - Recreation Department	--	750.00	750.00
Interest	308.21	924.64	1,232.85
Proceeds - Tax Anticipation Certificates	200,000.00	250,000.00	450,000.00
Miscellaneous	--	25.00	25.00
Total Receipts	\$867,948.61	\$770,797.39	\$1,638,746.00
Total Available	\$975,248.83	\$772,228.86	\$1,747,477.69

	Montgomery County	Prince George's County	Total
<b>DISBURSEMENTS:</b>			
Commissioners' Salaries	\$ 20,100.00	\$ 29,413.86	\$ 49,513.86
Administrative Salaries	74,980.17	54,281.55	129,261.72
Planning Salaries	313,452.18	254,967.81	568,419.99
Office Expense	21,592.38	13,496.90	35,089.28
Publication of Notices	3,908.31	1,296.75	5,205.06
Books, Newspapers and Technical Publication	2,367.20	1,438.01	3,805.21
Professional Services	20,365.76	22,058.14	42,423.90
Stationery and Printing	25,626.11	26,066.02	51,692.13
Telephone and Postage	10,109.77	9,285.30	19,395.07
Equipment	12,760.89	15,293.58	28,054.47
Plat Recording	1,011.00	1,950.00	2,961.00
Maintenance and Repairs	16,716.35	17,563.67	34,280.02
Travel Expense	2,971.50	4,623.12	7,594.62
Insurance and Bond Premiums	2,371.61	1,127.36	3,498.97
Employees Retirement Expense	21,605.41	13,892.76	35,498.17
Social Security Tax	10,487.24	8,570.14	19,057.38
Topographic Maps for Resale	412.50	281.25	693.75
Refunds	83.00	400.00	483.00
Transfer to Zoning Amendment Account	--	18,000.00	18,000.00
Zoning Ordinances	140.00	--	140.00
Interest	1,680.00	2,100.00	3,780.00
Payment - Tax Anticipation Certificates	200,000.00	250,000.00	450,000.00
Zoning Amendment Fees	--	180.00	180.00
Miscellaneous	865.23	729.19	1,594.42
<b>Total Disbursements</b>	<b>\$763,606.61</b>	<b>\$747,015.41</b>	<b>\$1,510,622.02</b>
<b>BALANCE - April 30, 1964</b>	<b>\$211,642.22</b>	<b>\$ 25,213.45</b>	<b>\$ 236,855.67</b>

**ADMINISTRATION FUND - SPECIAL ACCOUNTS**

**URBAN PLANNING ACCOUNT:**

BALANCE - May 1, 1963	\$ --	\$ 9,563.75	\$ 9,563.75
RECEIPTS: None	--	--	--
<b>Total Available</b>	<b>\$ --</b>	<b>\$ 9,563.75</b>	<b>\$ 9,563.75</b>
DISBURSEMENTS: None	--	--	--
<b>BALANCE - April 30, 1964</b>	<b>\$ --</b>	<b>\$ 9,563.75</b>	<b>\$ 9,563.75</b>

**ZONING AMENDMENT FEES:**

BALANCE - May 1, 1963	\$ --	\$ --	\$ --
RECEIPTS:			
Fees Collected	--	18,000.00	18,000.00
<b>Total Available</b>	<b>\$ --</b>	<b>\$ 18,000.00</b>	<b>\$ 18,000.00</b>
DISBURSEMENTS: None	--	--	--
<b>BALANCE - April 30, 1964</b>	<b>\$ --</b>	<b>\$ 18,000.00</b>	<b>\$ 18,000.00</b>

PARK FUND - GENERAL

	Montgomery County	Prince George's County	Total
BALANCE - May 1, 1963	\$ 63,455.23	\$ 224,113.87	\$ 287,569.10
RECEIPTS:			
Tax Levy, 13½¢	\$1,824,245.45	\$ --	\$1,824,245.45
Tax Levy, 13¢	53,298.05	--	53,298.05
Tax Levy, 10¢	--	940,111.54	940,111.54
Tax Levy, 10¢ and 7¢	--	16,927.13	16,927.13
Rentals	20,075.00	8,098.30	28,173.30
Golf Course and Soft Drink Concessions	970.32	631.40	1,601.72
Wheaton Regional Park Concessions	10,316.15	--	10,316.15
Refund from Montgomery County of 75% of Cost of Park Maintenance	326,752.97	--	326,752.97
Reimbursement - Expenses	14,505.98	5,769.11	20,275.09
Sale of Equipment	--	450.00	450.00
Donation - Park Development	1,000.00	--	1,000.00
Reimbursement - Series "K" Bonds	7,720.00	--	7,720.00
Forfeit of Deposits	138.00	--	138.00
Interest	1,541.06	924.64	2,465.70
Proceeds - Tax Anticipation Certificates	1,000,000.00	400,000.00	1,400,000.00
Transfer from Special Fund	--	37,608.25	37,608.25
Employees Contribution - Uniforms	6,027.75	2,929.10	8,956.85
Miscellaneous	20.00	--	20.00
Total Receipts	\$3,266,610.73	\$1,413,449.47	\$4,680,060.20
Total Available	\$3,330,065.96	\$1,637,563.34	\$4,967,629.30
DISBURSEMENTS:			
Park Salaries and Allowances	\$ 275,508.23	\$ 170,226.59	\$ 445,734.82
Maintenance and Development Labor	531,901.19	260,475.54	792,376.73
Insurance	26,063.08	13,280.11	39,343.19
Telephone	10,579.24	673.29	11,252.53
Equipment	121,221.75	56,093.78	177,315.53
Autos, Trucks and Tractors	58,243.09	49,019.57	107,262.66
Park Building Maintenance	100,990.89	26,071.09	127,061.98
Road and Ground Maintenance	71,267.14	35,416.50	106,683.64
Park Development	417,323.64	299,737.59	717,061.23
Travel Expense	2,241.28	1,298.56	3,539.84
Transfer to Reserve Fund	35,000.00	25,000.00	60,000.00
Bond Principal	365,000.00	102,000.00	467,000.00
Bond Interest and Expense	410,084.71	127,553.15	537,637.86
Employees Retirement Expense	24,051.65	9,085.22	33,136.87
Social Security Tax	26,509.03	13,692.58	40,201.61
Uniform Rental	12,799.83	6,213.88	19,013.71
Refunds	195.00	--	195.00
Interest	8,400.00	3,360.00	11,760.00
Payment - Tax Anticipation Certificates	1,000,000.00	400,000.00	1,400,000.00
Miscellaneous	5,752.69	3,301.05	9,053.74
Total Disbursements	\$3,503,132.44	\$1,602,498.50	\$5,105,630.94
BALANCE - April 30, 1964	\$ (173,066.48)	\$ 35,064.84	\$ (138,001.64)

PARK FUND - UPPER COUNTY ACCOUNT

	Montgomery County	Prince George's County	Total
BALANCE - May 1, 1963	\$ 71,494.10	\$ --	\$ 71,494.10
RECEIPTS:			
Tax Levy, 5¢	\$ 80,417.52	\$ --	\$ 80,417.52
Loan from Potomac Electric Power Co.	57,765.50	--	57,765.50
Refund - Recording Fee	7.50	--	7.50
Total Receipts	\$138,190.52	\$ --	\$138,190.52
Total Available	\$209,684.62	\$ --	\$209,684.62
DISBURSEMENTS:			
Land Purchases	\$157,379.32	\$ --	\$157,379.32
Titles and Settlements	1,469.29	--	1,469.29
Surveys and Engineering	1,645.00	--	1,645.00
Payment on Loan - Potomac Electric Power Company	20,000.00	--	20,000.00
Total Disbursements	\$180,493.61	\$ --	\$180,493.61
BALANCE - April 30, 1964	\$ 29,191.01	\$ --	\$ 29,191.01

PARK FUND - SPECIAL ACCOUNTS

	Ball Field Lights Cabin John Park	Montpelier	Total
BALANCE - May 1, 1963	\$ --	\$ 24,726.00	\$ 24,726.00
RECEIPTS:			
Montgomery County Boy's Baseball Asso.	1,500.00	--	1,500.00
Total Available	\$ 1,500.00	\$ 24,726.00	\$ 26,226.00
DISBURSEMENTS:			
Electric Fixtures and Wiring	\$ --	\$ 1,486.00	\$ 1,486.00
Painting	--	2,962.61	2,962.61
Repairs and Replacements	--	1,137.36	1,137.36
Venetian Blinds	--	405.75	405.75
Heating Plant	--	2,423.33	2,423.33
Entomologist	--	300.00	300.00
Total Disbursements	\$ --	\$ 8,715.05	\$ 8,715.05
BALANCE - April 30, 1964	\$ 1,500.00	\$ 16,010.95	\$ 17,510.95

PARK FUND - SPECIAL LAND ACQUISITION ACCOUNTS

	Montgomery County	Prince George's County	Total
BALANCE - May 1, 1963	\$ --	\$ 42,913.68	\$ 42,913.68
RECEIPTS:			
Proceeds - Right of Way Maryland State Roads Commission	700,000.00	--	700,000.00
Total Available	\$700,000.00	\$ 42,913.68	\$742,913.68
DISBURSEMENTS:			
Appraisals	\$ --	\$ 1,900.00	\$ 1,900.00
Surveys and Engineering	--	3,305.60	3,305.60
Titles and Settlements	--	75.75	75.75
Rent and Taxes	--	24.08	24.08
Transfer to Park Fund - General	--	37,608.25	37,608.25
Total Disbursements	\$ --	\$ 42,913.68	\$ 42,913.68
BALANCE - April 30, 1964	\$700,000.00	\$ --	\$700,000.00

PARK FUND - RESERVE FOR FUTURE DEBT SERVICE

	Montgomery County	Prince George's County	Total
BALANCE - May 1, 1963	\$108,000.00	\$ 78,011.42	\$186,011.42
RECEIPTS:			
Interest	6,037.50	2,800.00	8,837.50
Total Available	\$114,037.50	\$ 80,811.42	\$194,848.92
DISBURSEMENTS: None	--	--	--
BALANCE - April 30, 1964	\$114,037.50	\$ 80,811.42	\$194,848.92

PARK FUND - RESERVE FOR SELF INSURANCE - BUILDING

BALANCE - May 1, 1963	\$ 70,000.00	\$ 50,000.00	\$120,000.00
RECEIPTS:			
Interest	\$ 3,412.50	\$ 2,000.00	\$ 5,412.50
Transfer from Park Fund - General	35,000.00	25,000.00	60,000.00
Total Receipts	\$ 38,412.50	\$ 27,000.00	\$ 65,412.50
Total Available	\$108,412.50	\$ 77,000.00	\$185,412.50
DISBURSEMENTS: None	--	--	--
BALANCE - April 30, 1964	\$108,412.50	\$ 77,000.00	\$185,412.50

PARK FUND - BOND PROCEEDS ACCOUNTS

BALANCE - May 1, 1963	\$2,202,565.20	\$1,481,583.97	\$3,684,149.17
RECEIPTS:			
Interest	\$ 31,799.06	\$ 26,625.00	\$ 58,424.06
Prince George's County Commissioner's	--	187,500.00	187,500.00
U. S. Housing and Home Finance Agency	818,233.10	335,694.00	1,153,927.10
Maryland Department of Forest and Parks	41,974.22	12,886.00	54,860.22
Deposits on "LL" and "MM" Bonds	70,000.00	25,000.00	95,000.00
Total Deposits	\$ 962,006.38	\$ 587,705.00	\$1,549,711.38
Total Available	\$3,164,571.58	\$2,069,288.97	\$5,233,860.55
DISBURSEMENTS:			
Land Acquisition:			
Land Purchases	\$2,824,347.26	\$1,196,448.96	\$4,020,796.22
Titles and Settlements	15,907.90	6,653.84	22,561.74
Taxes	937.21	1,245.05	2,182.26
Appraisals	7,275.00	3,965.00	11,240.00
Surveys and Engineering	40,348.05	8,505.26	48,853.31
Front Foot Benefits	--	4,677.47	4,677.47
Development:			
Wheaton Youth Center	205,886.21	--	205,886.21
Wheaton Regional Park	330.00	--	330.00
Beach Drive	66,231.81	--	66,231.81
Little Falls Parkway	18,945.42	--	18,945.42
Total Disbursements	\$3,180,208.86	\$1,221,495.58	\$4,401,704.44
BALANCE - April 30, 1964	\$ (15,637.28)	\$ 847,793.39	\$ 832,156.11



PARK FUND - CAPPER CRAMTON ACCOUNTS

	Montgomery County	Prince George's County	Total
BALANCE - May 1, 1963	\$159,591.26	\$692,448.21	\$852,039.47
RECEIPTS:			
Interest	3,500.00	25,200.00	28,700.00
Total Available	\$163,091.26	\$717,648.21	\$880,739.47
DISBURSEMENTS:			
Land Purchases	\$ 51,000.00	\$ 15,775.00	\$ 66,775.00
Titles and Settlements	273.50	3,849.90	4,123.40
Appraisals	--	800.00	800.00
Surveys and Engineering	--	1,083.00	1,083.00
Total Disbursements	\$ 51,273.50	\$ 21,507.90	\$ 72,781.40
BALANCES - April 30, 1964	\$111,817.76	\$696,140.31	\$807,958.07

BOND ISSUE DEBT SERVICE ACCOUNTS

	Recreation	Flood Control	Total
BALANCE - May 1, 1963	\$189,539.92	\$113,047.33	\$302,587.25
RECEIPTS:			
Tax Levy, 1¢	\$ --	\$ 95,724.73	\$ 95,724.73
Tax Levy, ½¢	2,052.00	--	2,052.00
Interest	8,625.00	2,400.00	11,025.00
Total Receipts	\$ 10,677.00	\$ 98,124.73	\$108,801.73
Total Available	\$200,216.92	\$211,172.06	\$411,388.98
DISBURSEMENTS:			
Interest Paid	\$ 3,125.00	\$ 32,758.00	\$ 35,883.00
Principal - "L" Bonds	20,000.00	--	20,000.00
Principal - 1954 Issue	--	10,000.00	10,000.00
Principal - 1957 Issue	--	15,000.00	15,000.00
Principal - 1959 Issue	--	5,000.00	5,000.00
Total Disbursements	\$ 23,125.00	\$ 62,758.00	\$ 85,883.00
BALANCE - April 30, 1964	\$177,091.92	\$148,414.06	\$325,505.98

SUMMARY OF BALANCES - APRIL 30, 1964

	Montgomery County	Prince George's County	Total
<b>ADMINISTRATION FUNDS:</b>			
General	\$ 211,642.22	\$ 25,213.45	\$ 236,855.67
Urban Planning Accounts	--	9,563.75	9,563.75
Zoning Amendments	--	18,000.00	18,000.00
<b>Park Funds:</b>			
General	(173,066.48)	35,064.84	(138,001.64)
Upper County Accounts	29,191.01	--	29,191.01
Special Accounts	1,500.00	16,010.95	17,510.95
Special Land Acquisition Accounts	700,000.00	--	700,000.00
Reserve for Future Debt Service	114,037.50	80,811.42	194,848.92
Reserve for Self Insurance - Buildings	108,412.50	77,000.00	185,412.50
Bond Proceeds Accounts	(15,637.28)	847,793.39	832,156.11
Capper - Cramton Accounts	111,817.76	696,140.31	807,958.07
Bond Issue Debt Service Accounts	177,091.92	148,414.06	325,505.98
<b>Total Funds</b>	<b>\$1,264,989.15</b>	<b>\$1,954,012.17</b>	<b>\$3,219,001.32</b>
Employees Taxes Withheld	10,916.92	7,911.41	18,828.33
Employees Contributions to Retirement	2,825.55	1,830.21	4,655.76
Employees Contributions to Social Security	3,281.67	2,222.24	5,503.91
<b>Total</b>	<b>\$1,282,013.29</b>	<b>\$1,965,976.03</b>	<b>\$3,247,989.32</b>
<b>ON DEPOSIT IN THE FOLLOWING BANKS:</b>			
American National Bank, Silver Spring	\$ 286,833.69	\$ --	\$ 286,833.69
Bank of Bethesda, Bethesda	36,305.65	--	36,305.65
First National Bank of Maryland, Kensington	33,467.83	--	33,467.83
National Bank of Maryland, Silver Spring	37,108.11	--	37,108.11
State National Bank of Maryland, Bethesda	1,239.56	--	1,239.56
Suburban Trust Company	440,400.95	447,035.07	887,436.02
American National Bank - Time Deposit	311,500.00	--	311,500.00
Citizens Bank of Maryland - Time Deposit	35,000.00	1,110,000.00	1,145,000.00
Suburban Trust Company - Time Deposit	100,000.00	--	100,000.00
Chemical Bank New York Trust Company	--	20,000.00	20,000.00
Citizens Bank of Maryland, Riverdale	--	340,745.52	340,745.52
Clinton Bank, Clinton, Maryland (a)	--	7,667.41	7,667.41
First National Bank of Southern Maryland	--	30,210.53	30,210.53
Marlboro	--	10,000.00	10,000.00
Maryland National Bank (a)	--	10,000.00	10,000.00
<b>Total</b>	<b>\$1,281,855.79</b>	<b>\$1,965,658.53</b>	<b>\$3,247,514.32</b>
Petty Cash	157.50	317.50	475.00
<b>Total to be Accounted For</b>	<b>\$1,282,013.29</b>	<b>\$1,965,976.03</b>	<b>\$3,247,989.32</b>

(a) Deposits are not covered by collateral but protected by Federal Deposit Insurance.  
All other Deposits are secured by United States Government Bonds under escrow agreements.

We have compiled the above Statement of Cash Receipts and Disbursements for the Fiscal Year, May 1, 1963 to April 30, 1964, both dates inclusive, from our audit reports of December 30, 1963 and June 22, 1964.

Respectfully submitted,

*Harold S. Roberts*

Certified Public Accountant (D.C.)

Approved:

*Jose F. Nicholson*

Executive Director

The Maryland-National Capital Park and Planning Commission

**REGIONAL OFFICES**

8787 Georgia Avenue, Silver Spring—JUniper 9-1480

4811 Riverdale Road, Riverdale—APpleton 7-2200

**PHONES**

JUniper 9-1480

APpleton 7-2200



SEPTEMBER 1964