

# 20<sup>th</sup>

LIBRARY  
The Maryland-National Capital  
Park and Planning Commission  
6800 Kenilworth Ave.  
Riverdale, Maryland 20840

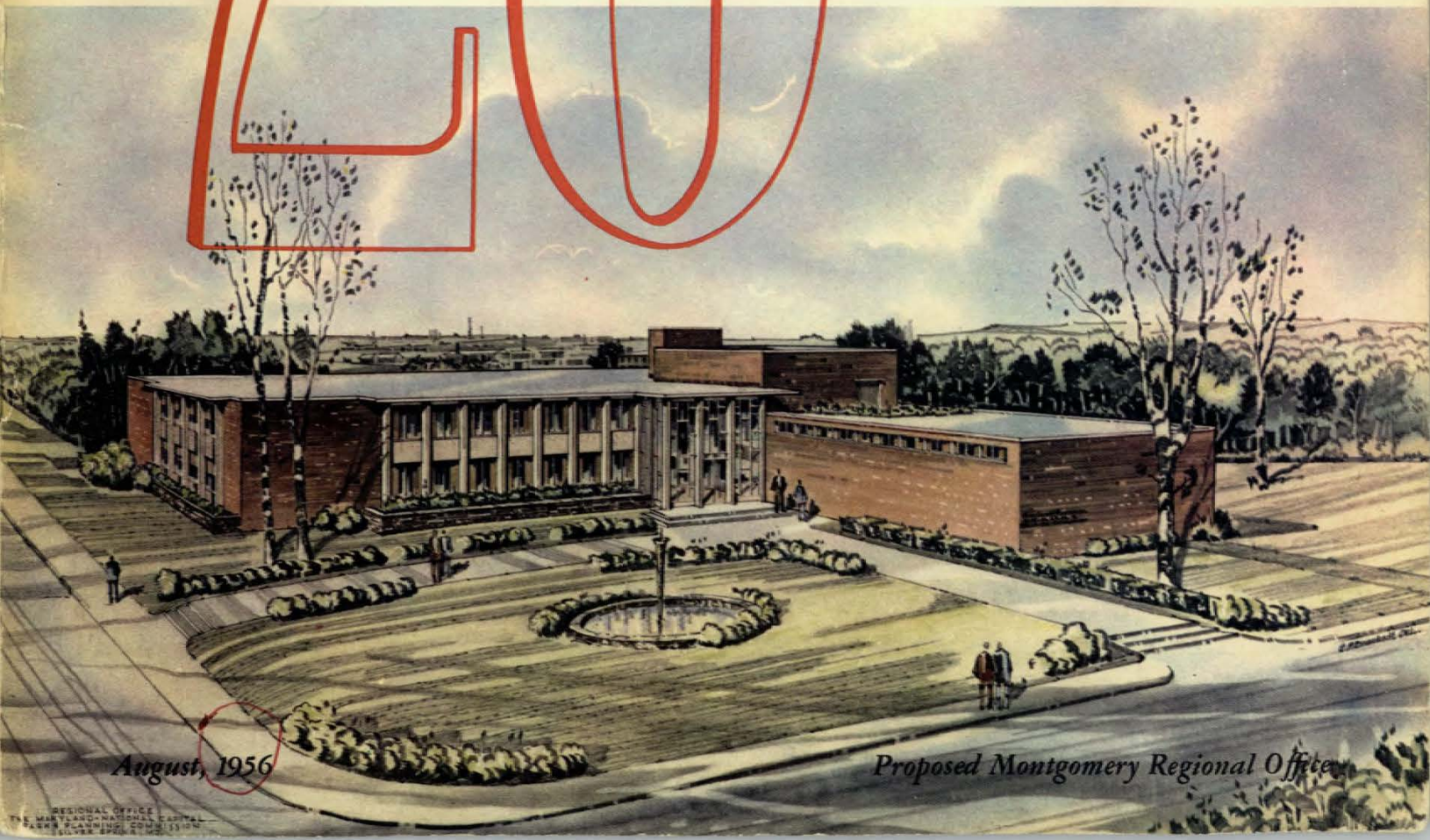
## annual report

The Maryland-National Capital Park and Planning Commission

*Riverdale*

*MARYLAND*

*Silver Spring*



August, 1956

Proposed Montgomery Regional Office





## THE COMMISSION

ALVA H. BENDER

HERBERT W. WELLS

SIDNEY M. OLIVER  
*Vice-Chmn. & Park Commr.*

CARLTON E. PYLES  
*Chairman*

DONALD E. GINGERY

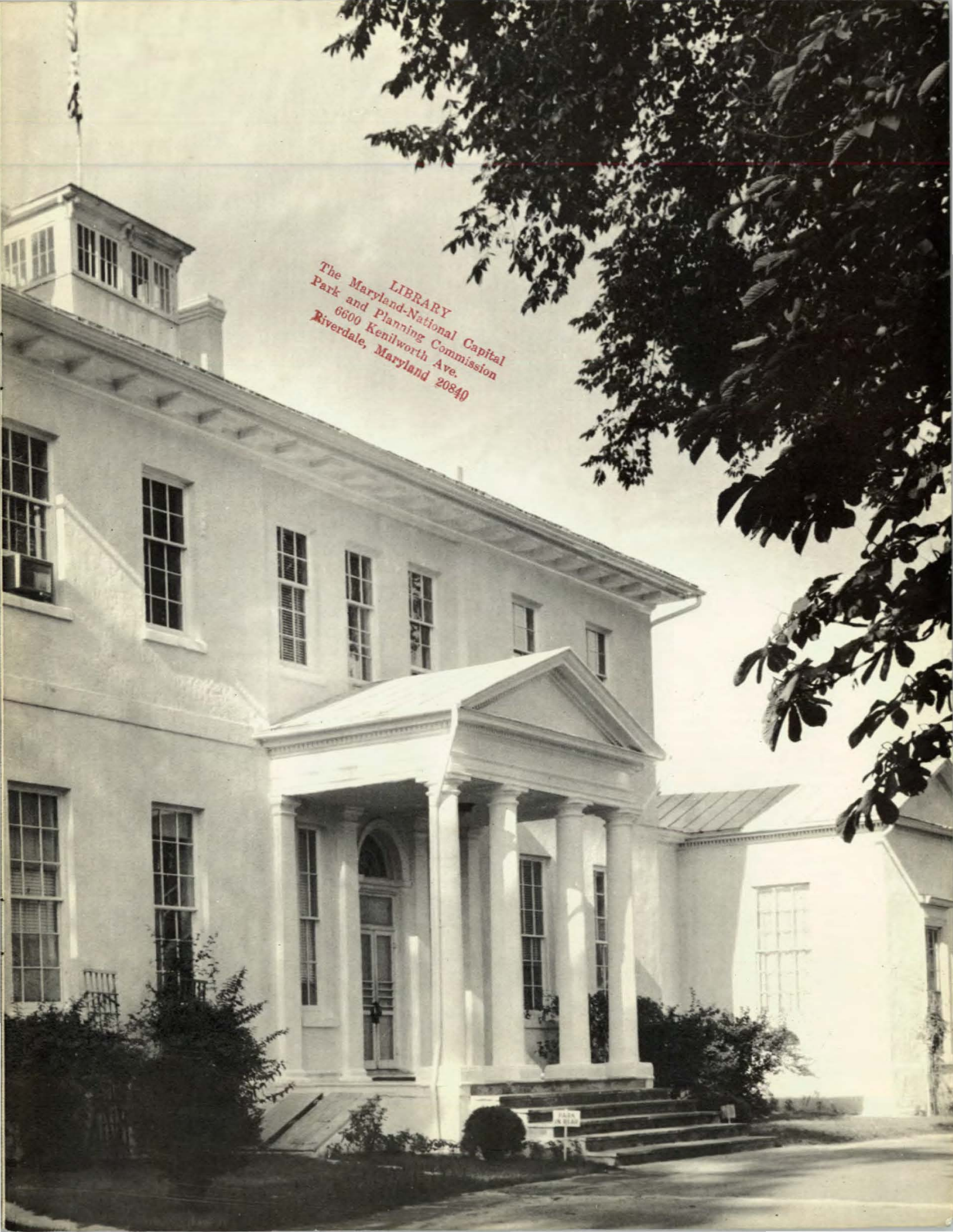
ARNOLD B. MCKEE

THE CALVERT MANSION—Prince Georges County Regional Office of the Commission.

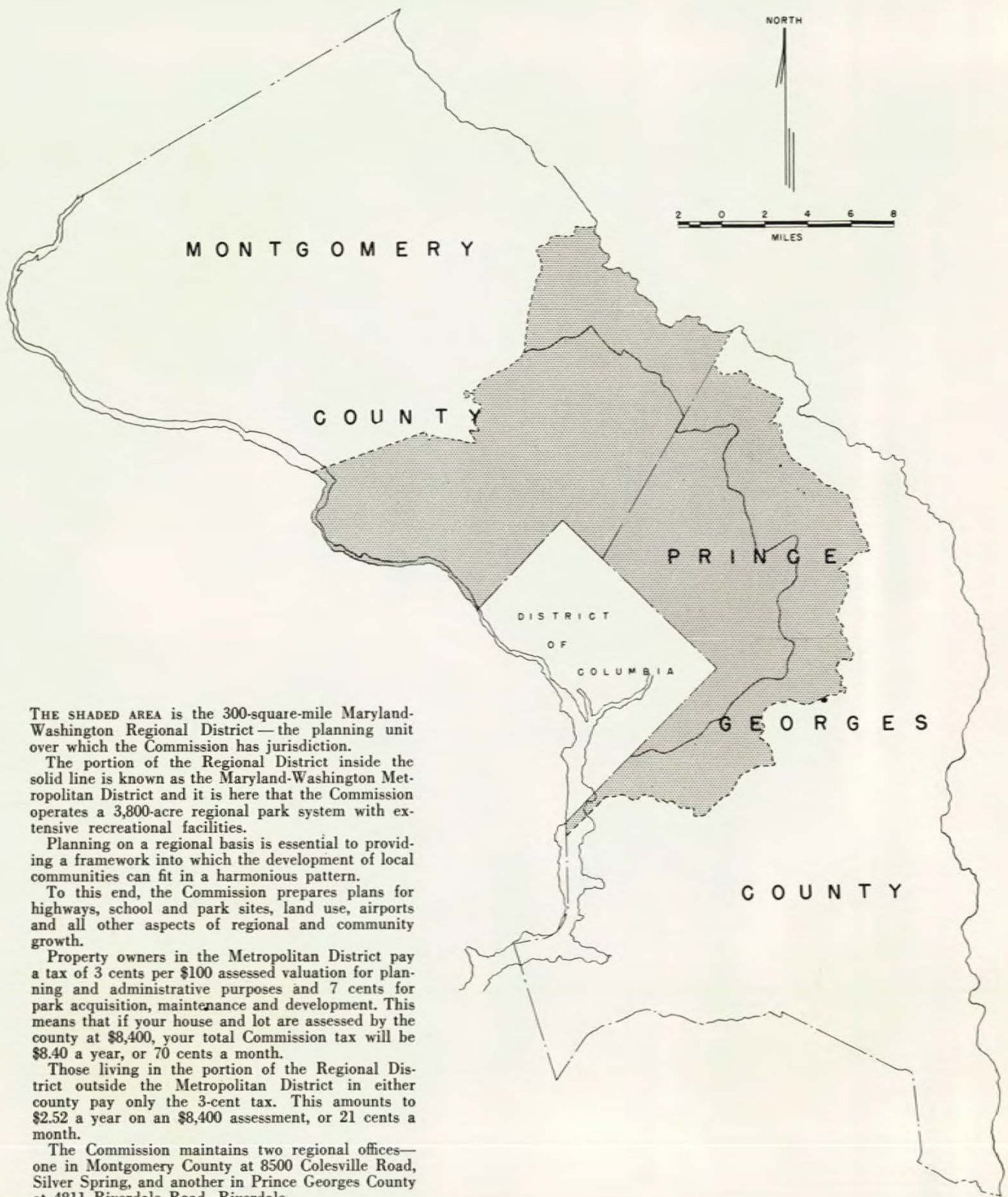




**LIBRARY**  
The Maryland-National Capital  
Park and Planning Commission  
6600 Kenilworth Ave.  
Riverdale, Maryland 20840







THE SHADED AREA is the 300-square-mile Maryland-Washington Regional District—the planning unit over which the Commission has jurisdiction.

The portion of the Regional District inside the solid line is known as the Maryland-Washington Metropolitan District and it is here that the Commission operates a 3,800-acre regional park system with extensive recreational facilities.

Planning on a regional basis is essential to providing a framework into which the development of local communities can fit in a harmonious pattern.

To this end, the Commission prepares plans for highways, school and park sites, land use, airports and all other aspects of regional and community growth.

Property owners in the Metropolitan District pay a tax of 3 cents per \$100 assessed valuation for planning and administrative purposes and 7 cents for park acquisition, maintenance and development. This means that if your house and lot are assessed by the county at \$8,400, your total Commission tax will be \$8.40 a year, or 70 cents a month.

Those living in the portion of the Regional District outside the Metropolitan District in either county pay only the 3-cent tax. This amounts to \$2.52 a year on an \$8,400 assessment, or 21 cents a month.

The Commission maintains two regional offices—one in Montgomery County at 8500 Colesville Road, Silver Spring, and another in Prince Georges County at 4811 Riverdale Road, Riverdale.

Commission meetings are held every two weeks alternately in Silver Spring and Riverdale. They are open to the public.





1930  
POPULATION—71,783

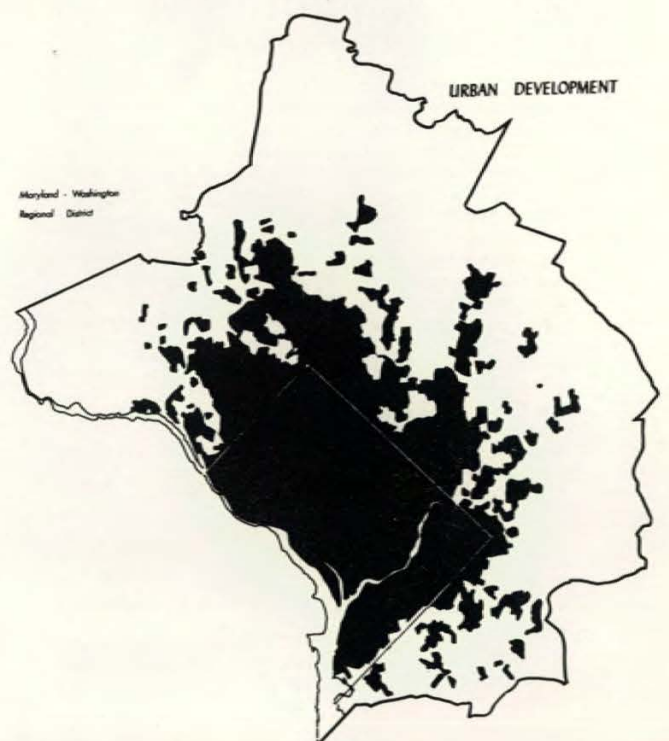


1940  
POPULATION—128,685

THE PHENOMENAL population increase in the Maryland-Washington Regional District during the last quarter-century is demonstrated graphically by these maps.



1950  
POPULATION—293,411



1956  
POPULATION—483,000





THE PHOTOGRAPHS on these two pages show how the population of the area under the Commission's jurisdiction is steadily increasing. This picture of a subdivision being developed just west of Georgia Avenue in Glenmont was taken about a year ago.

HERE IS THE SAME AREA as it appears today, filled with homes and new residents. Approximately 30,000 people are moving into suburban Maryland each year.





HERE IS A PICTURE of the Marlow Heights area at St. Barnabas Road and Branch Avenue in 1955 just before housing construction began.



THE SAME AREA TODAY, with the land cleared and construction well underway.



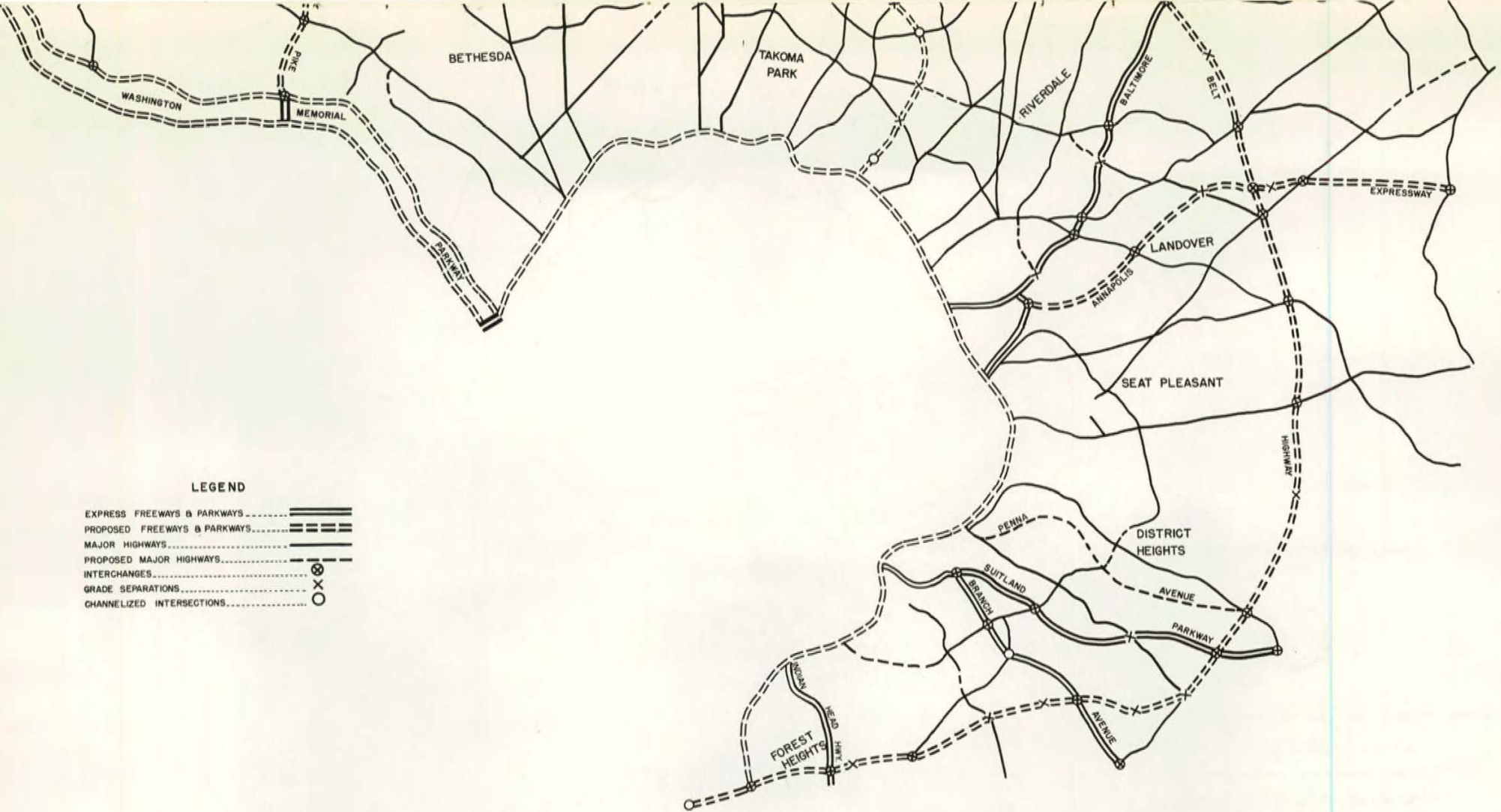


REVISED MASTER PLAN OF HIGHWAYS  
FOR THE  
MARYLAND-WASHINGTON REGIONAL DISTRICT  
IN  
MONTGOMERY AND PRINCE GEORGE'S COUNTIES  
MARYLAND



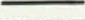
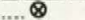
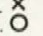
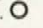

THE MARYLAND-NATIONAL CAPITAL PARK AND PLANNING COMMISSION



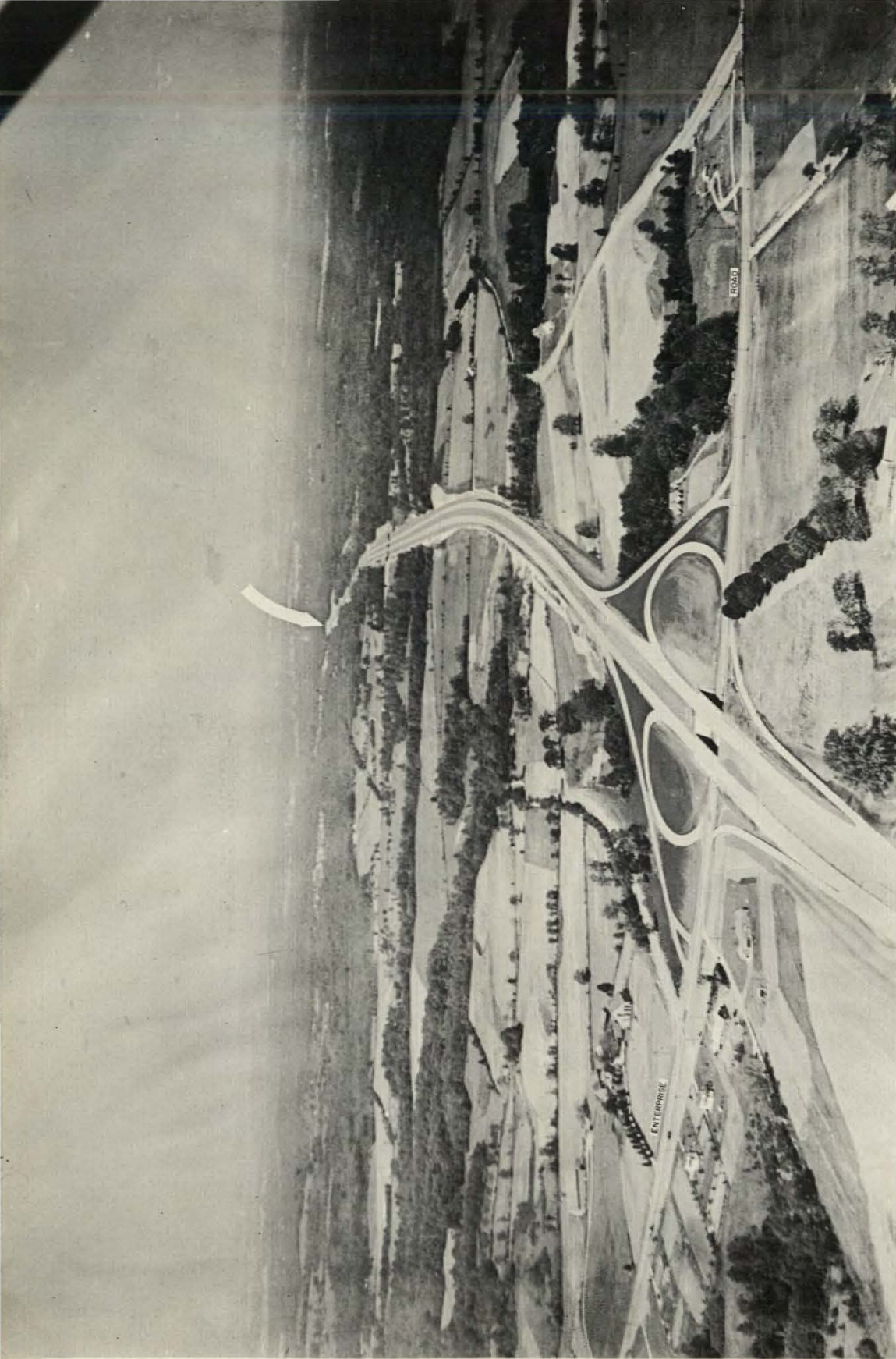




**LEGEND**

- EXPRESS FREEWAYS & PARKWAYS ..... 
- PROPOSED FREEWAYS & PARKWAYS ..... 
- MAJOR HIGHWAYS ..... 
- PROPOSED MAJOR HIGHWAYS ..... 
- INTERCHANGES ..... 
- GRADE SEPARATIONS ..... 
- CHANNELIZED INTERSECTIONS ..... 



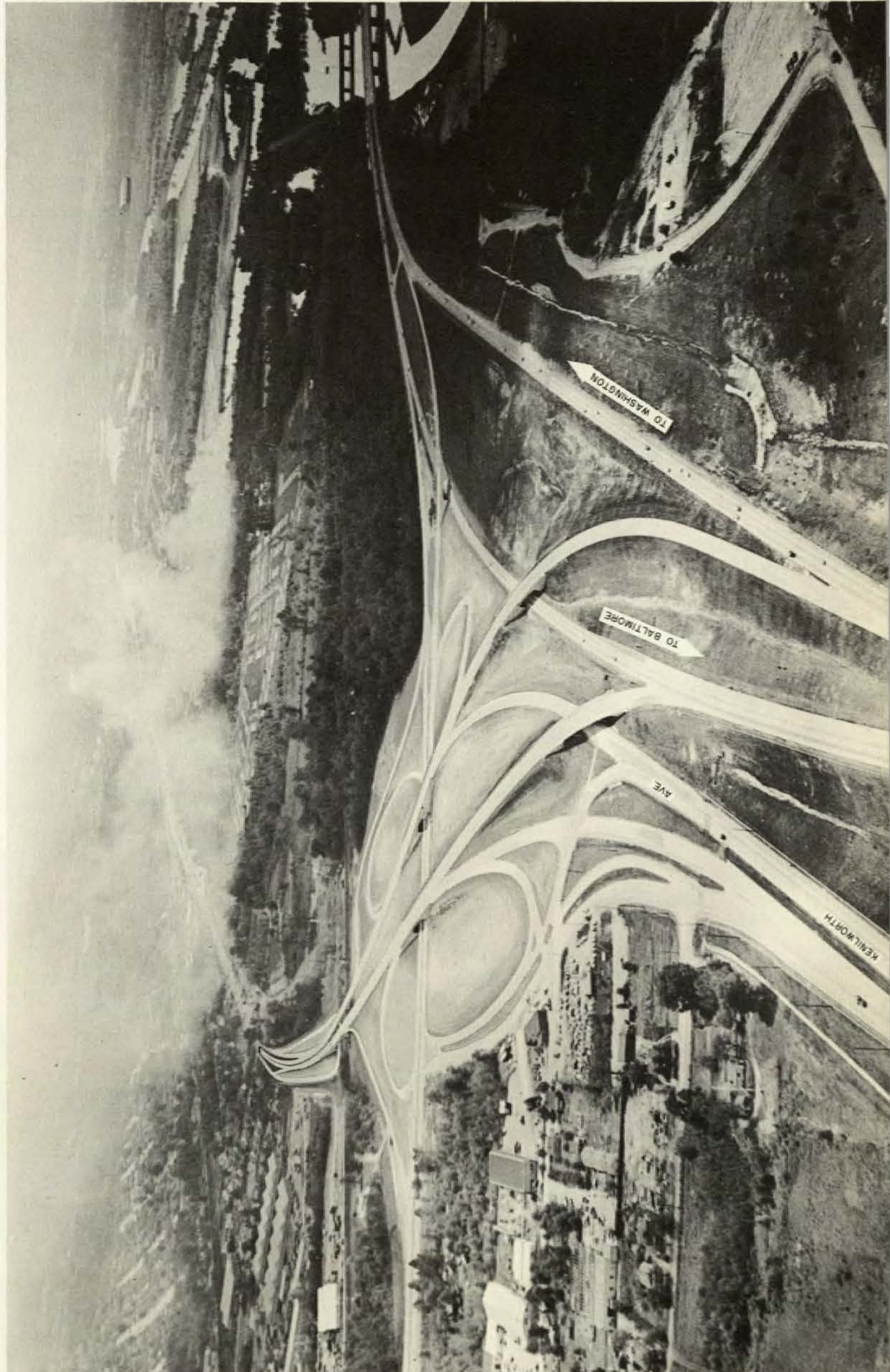


SUPERIMPOSED on this aerial photograph is the route of the Washington-Annapolis Expressway looking west from Enterprise Road. The 2-mile section between Enterprise Road and George Palmer Highway (indicated by arrow) is expected to be completed this

fall. Construction of the final stretch between Palmer Highway and Kenilworth Avenue probably will begin next year. Much of the right-of-way for the expressway has been reserved by the Commission where subdivision development has occurred.



THIS SPAGHETTI-LIKE MAZE of roads spreading over approximately 60 acres is what the Kenilworth interchange will look like when it is completed in 1958. The Annapolis Freeway will come in from the left, going under Kenilworth avenue and crossing over the north-bound lane of the Washington-Baltimore Parkway, near the District of Columbia line.





RD.

GLEN

FOREST

GEORGIA

TO WHEATON

X





THIS SKETCH shows how the Intercounty Belt Highway will go over Georgia Avenue and Sligo Creek Parkway and cross the Commission's Sligo Golf Club enroute to Colesville Road. Construction of this portion of the road is expected to start within the next three years. The area between the two groups of houses in the center of the picture has been reserved by the Commission for the right-of-way.



X



SINCE the Intercounty Belt Highway will make a portion of the Sligo Golf Club unusable, the Commission has begun clearing a portion of Sligo Park adjacent to the club preparatory to relocating the golf course. This is being done now so there will be no interruption in play when the road is built.

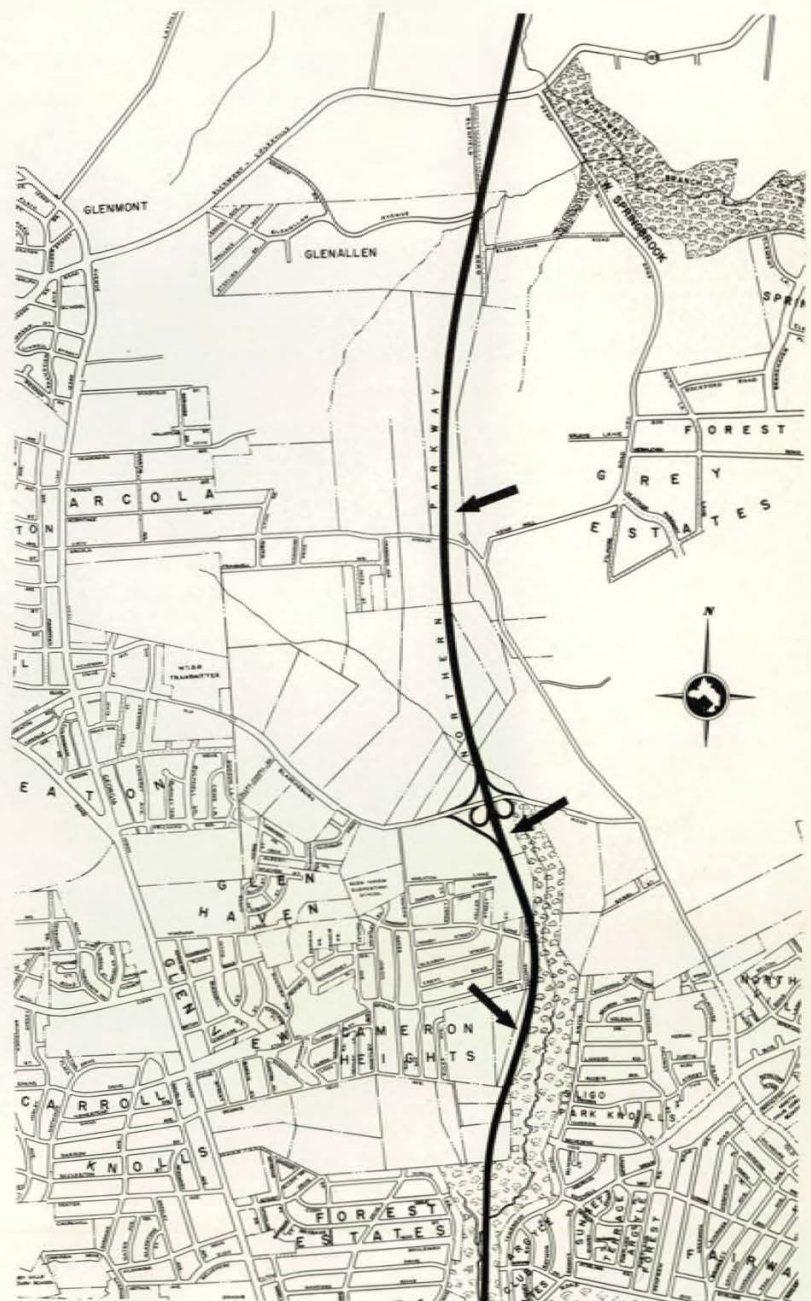
+





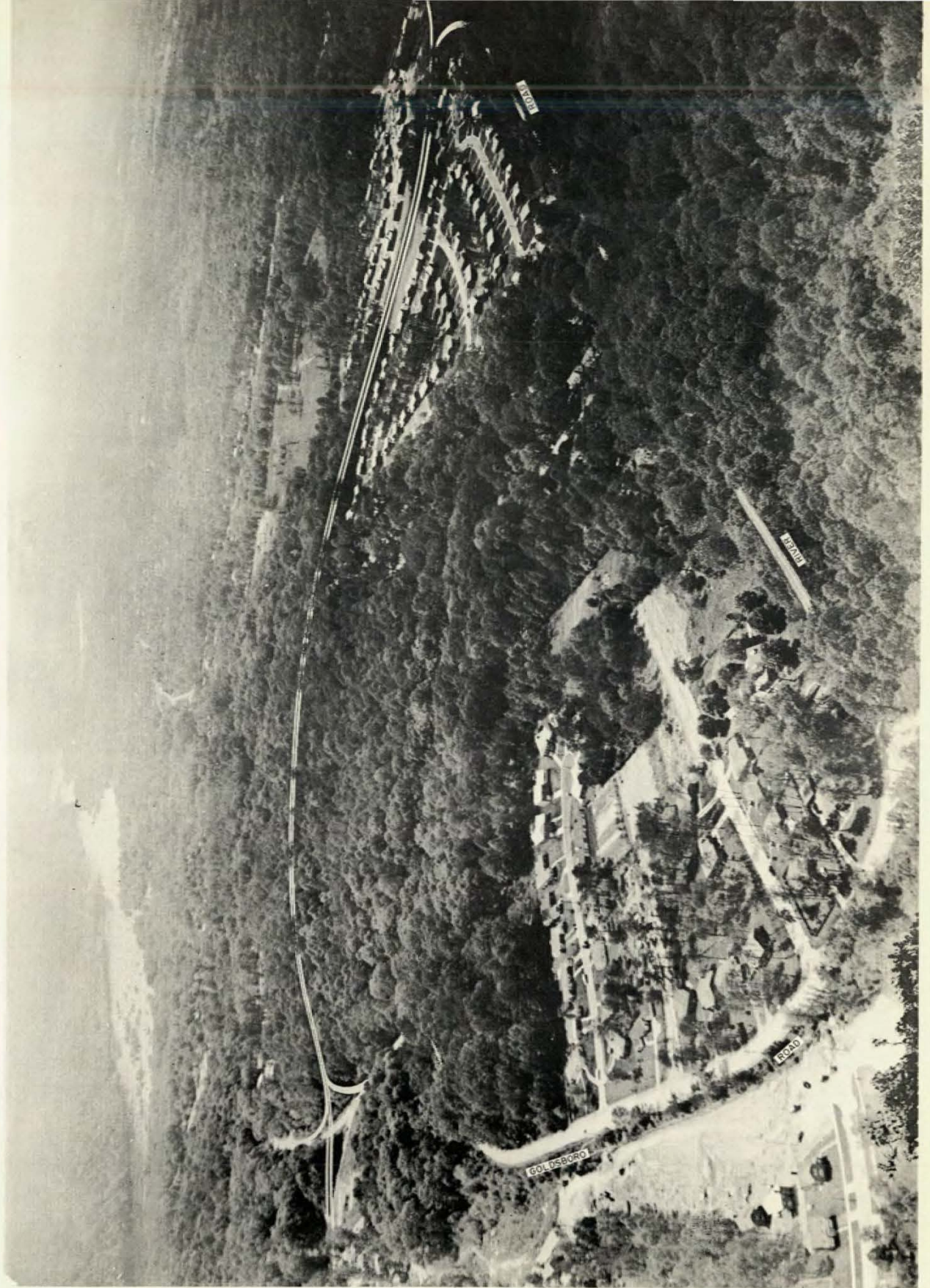


IN THE PHOTO at top, Commission employes erect a sign showing that the planning agency has reserved this tract for the route of the Northern Parkway.



The map at right shows a portion of the proposed parkway through Silver Spring. The arrows designate areas which the Commission has reserved for the right-of-way of this important road.





THIS PHOTOGRAPH shows how Massachusetts Avenue will be extended to River Road over a right-of-way which has been reserved by the Commission.

X



# ZONING PLAN FOR THE BETHESDA BUSINESS DISTRICT AND VICINITY

MONTGOMERY COUNTY, MARYLAND

JUNE 13, 1956



### LEGEND

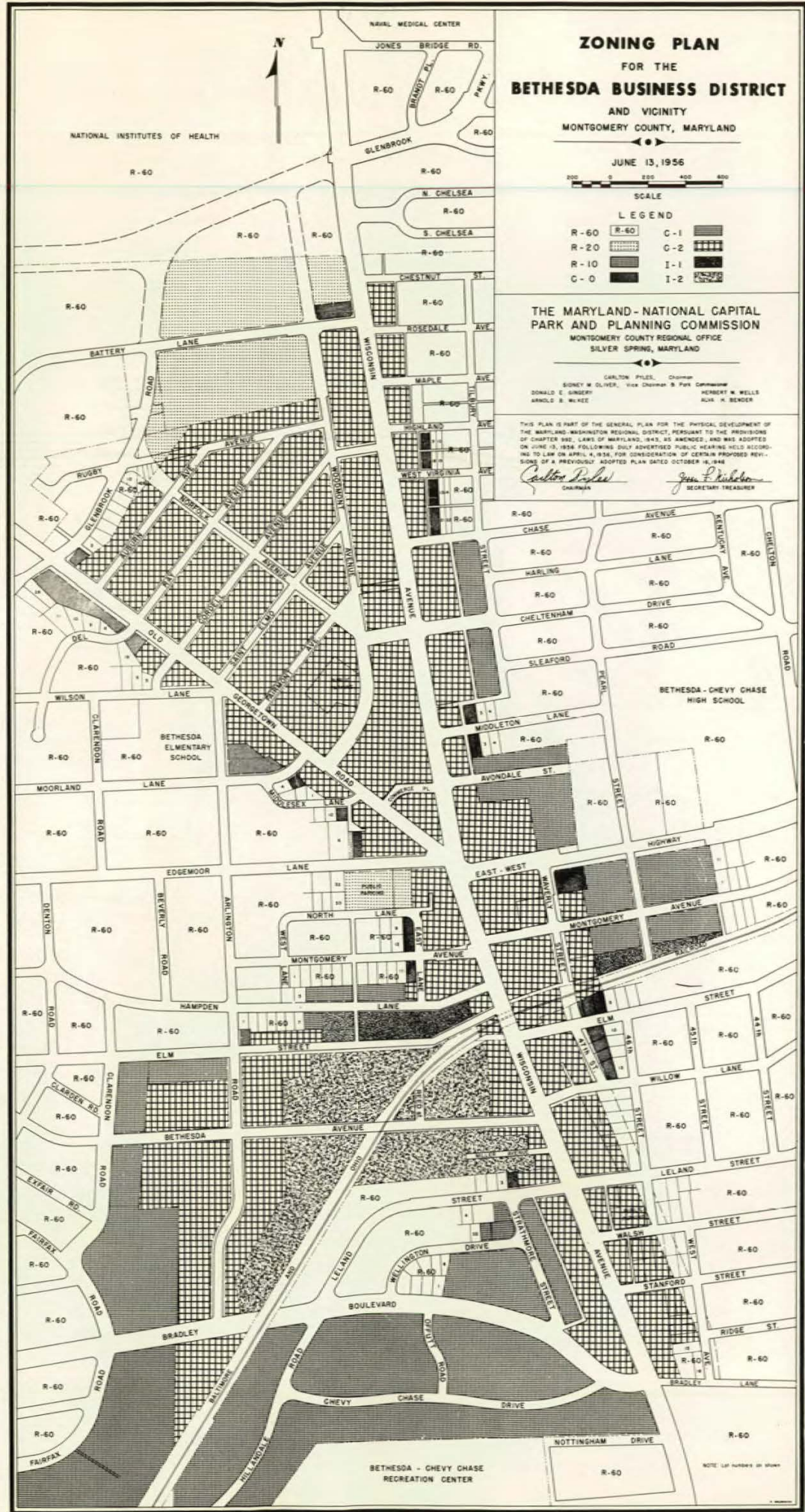
R-60		C-1	
R-20		C-2	
R-10		I-1	
C-0		I-2	

THE MARYLAND-NATIONAL CAPITAL  
PARK AND PLANNING COMMISSION  
MONTGOMERY COUNTY REGIONAL OFFICE  
SILVER SPRING, MARYLAND

CARLTON PILES, Chairman  
SIDNEY W. OLIVER, Vice Chairman & Park Commissioner  
DONALD E. GIBNEY, Secretary  
ARNOLD B. WILLET, Secretary

THIS PLAN IS PART OF THE GENERAL PLAN FOR THE PHYSICAL DEVELOPMENT OF THE MARYLAND-WASHINGTON REGIONAL DISTRICT, PURSUANT TO THE PROVISIONS OF CHAPTER 536, LAWS OF MARYLAND, 1948, AS AMENDED, AND WAS ADOPTED ON JUNE 13, 1956 FOLLOWING PUBLIC HEARING HELD ACCORDING TO LAW ON APRIL 4, 1956, FOR CONSIDERATION OF CERTAIN PROPOSED REVISIONS OF A PREVIOUSLY ADOPTED PLAN DATED OCTOBER 16, 1948.

*Carlton Piles* Chairman  
*John P. Disher* Secretary-Treasurer



BETHESDA - CHEVY CHASE  
RECREATION CENTER

NOTE: LOT NUMBERS BY SHOW



**MASTER PLAN  
OF  
STREETS AND HIGHWAYS  
FOR THE  
BETHESDA BUSINESS DISTRICT  
AND VICINITY  
MONTGOMERY COUNTY, MARYLAND**

JUNE 13, 1956



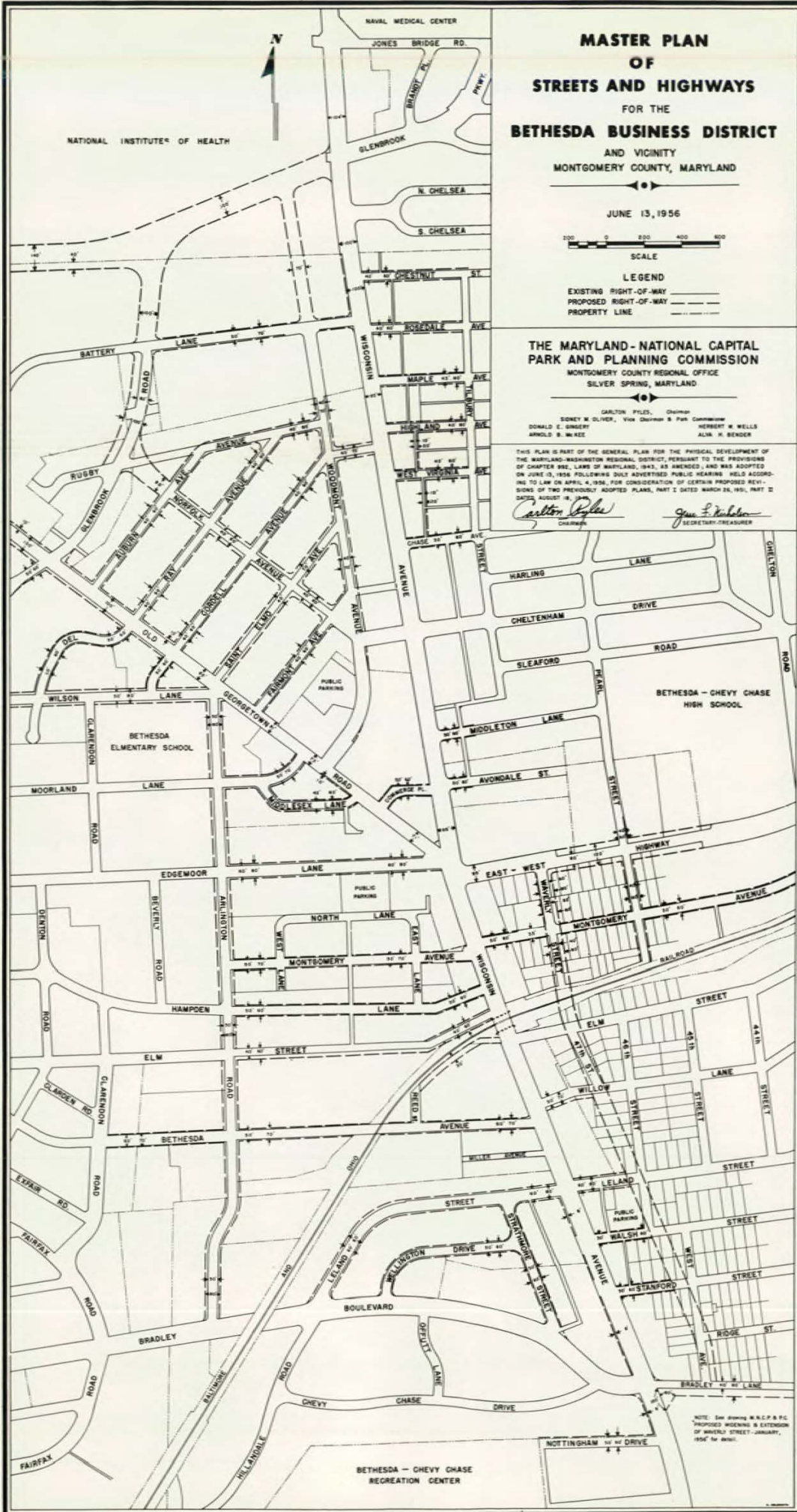
**LEGEND**  
 EXISTING RIGHT-OF-WAY ———  
 PROPOSED RIGHT-OF-WAY - - - -  
 PROPERTY LINE - · - · -

**THE MARYLAND-NATIONAL CAPITAL  
PARK AND PLANNING COMMISSION**  
 MONTGOMERY COUNTY REGIONAL OFFICE  
 SILVER SPRING, MARYLAND

GALTON FIELD, Chairman  
 SONEY W. OLIVER, Vice Chairman & Park Commissioner  
 DONALD E. GINSBERG, HERBERT W. WELLS  
 ARNOLD S. WALKER, ALAN H. BENDER

THIS PLAN IS PART OF THE GENERAL PLAN FOR THE PHYSICAL DEVELOPMENT OF THE MARYLAND-WASHINGTON REGIONAL DISTRICT, PURSUANT TO THE PROVISIONS OF CHAPTER 202, LAWS OF MARYLAND, 1945, AS AMENDED, AND WAS ADOPTED ON JUNE 13, 1956 FOLLOWING DULY ADVERTISED PUBLIC HEARING HELD ACCORDING TO LAW ON APRIL 4, 1956, FOR CONSIDERATION OF CERTAIN PROPOSED REVISIONS OF TWO PREVIOUSLY ADOPTED PLANS, PART I DATED MARCH 28, 1951, PART II DATED AUGUST 9, 1951.

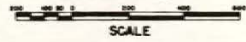
*Galton Field* Chairman  
*James F. Kuehler* Secretary-Treasurer





# ZONING PLAN FOR THE TOWN OF KENSINGTON AND VICINITY

NOVEMBER 10, 1955



## LEGEND

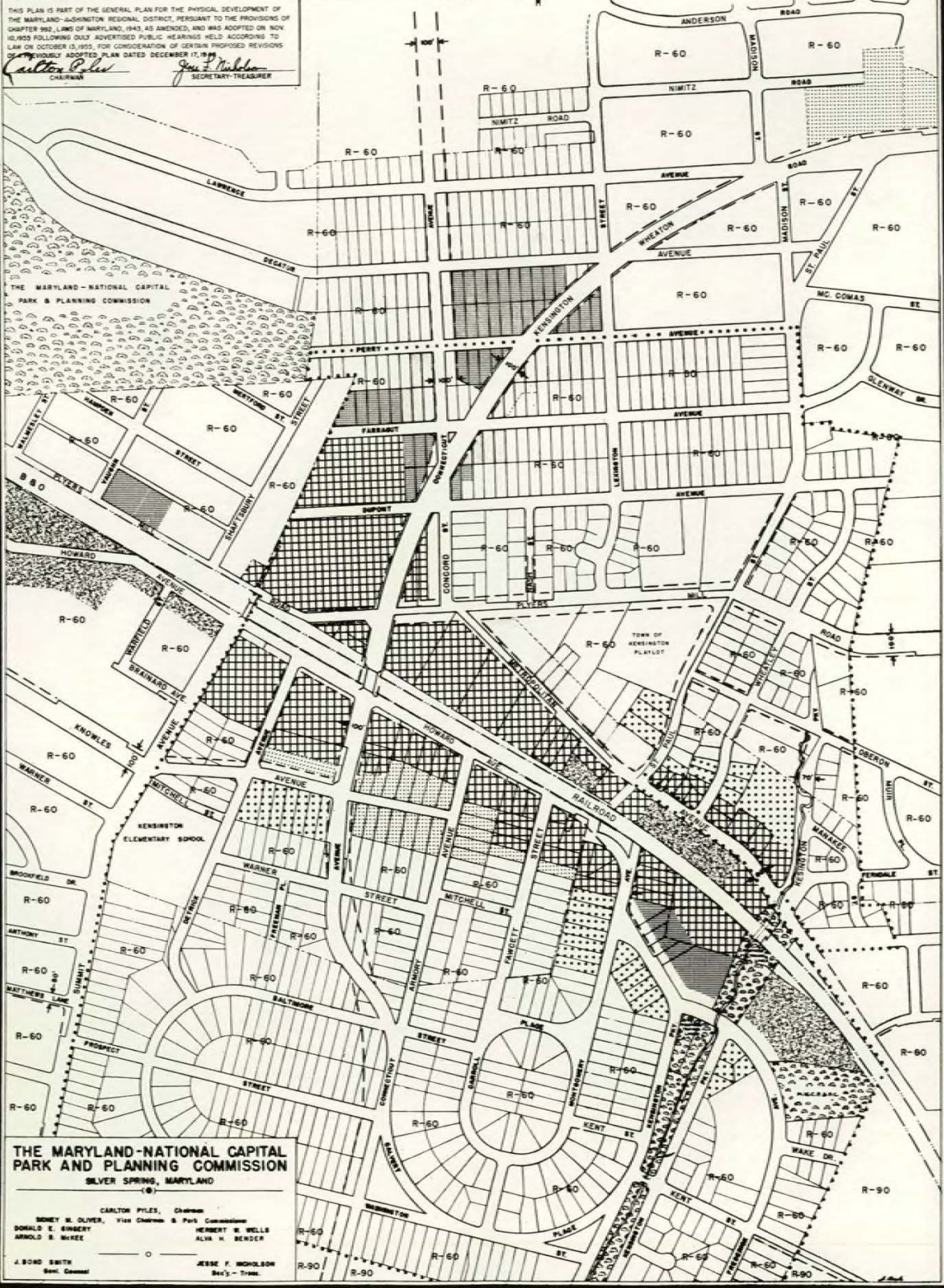
R-90	R-80	C-0	
R-60	R-60	C-1	
R-40	R-40	C-2	
R-30	R-30	I-1	
R-20	R-20		



THIS PLAN IS PART OF THE GENERAL PLAN FOR THE PHYSICAL DEVELOPMENT OF THE MARYLAND-NATIONAL CAPITAL DISTRICT, PURSUANT TO THE PROVISIONS OF CHAPTER 282, LANS OF MARYLAND, 1943, AS AMENDED, AND WAS ADOPTED BY NOW 10,1955 FOLLOWING QUARTY ADVERTISED PUBLIC HEARINGS HELD ACCORDING TO LAW ON OCTOBER 13, 1955, FOR CONSIDERATION OF CERTAIN PROPOSED REVISIONS OF PREVIOUSLY ADOPTED PLAN DATED DECEMBER 17, 1954.

*Carlton Piles*  
CHAIRMAN

*John P. Walker*  
SECRETARY-TREASURER



**THE MARYLAND-NATIONAL CAPITAL  
PARK AND PLANNING COMMISSION**  
SILVER SPRING, MARYLAND

CARLTON PILES, Chairman  
DORIS M. OLIVER, Vice Chairman & Park Commissioner  
DONALD E. SINGERY  
ARNOLD S. WHEE

HERBERT H. WELLS  
ALVA H. BENDER

J. BOND SMITH  
Sect. Comm.

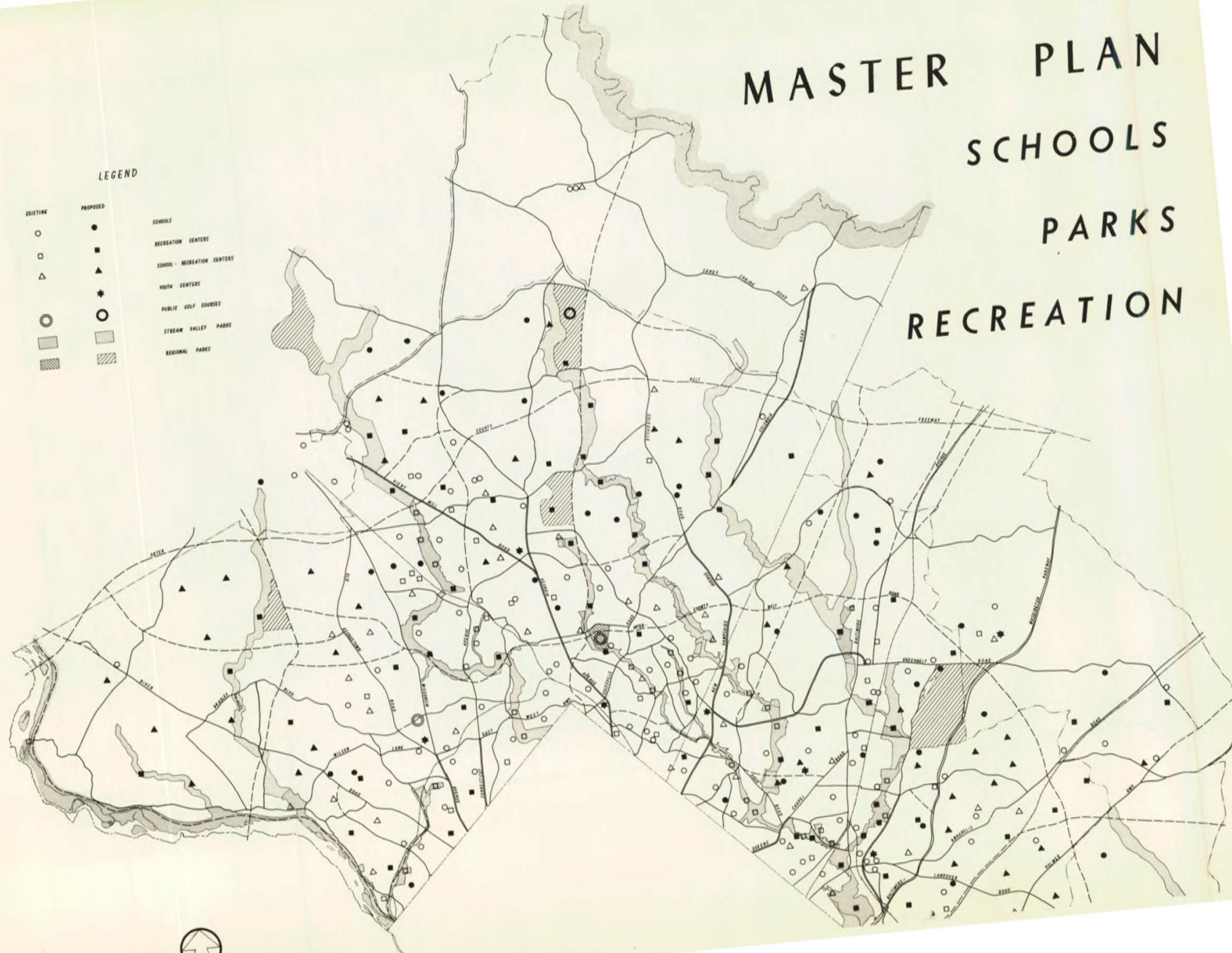
JESSE F. WOODSON  
Sec'y - Treas.



# MASTER PLAN SCHOOLS PARKS RECREATION

### LEGEND

- |                |                      |                             |
|----------------|----------------------|-----------------------------|
| EXISTING       | PROPOSED             | SCHOOLS                     |
| ○              | ●                    | RECREATION CENTERS          |
| □              | ■                    | SCHOOL - RECREATION CENTERS |
| △              | ▲                    | YOUTH CENTERS               |
| ○ (with dot)   | ○ (with star)        | PUBLIC GOLF COURSES         |
| ▭ (light gray) | ▭ (medium gray)      | STREAM VALLEY PARKS         |
| ▭ (hatched)    | ▭ (diagonal hatched) | REGIONAL PARKS              |







**PARK LAND ACQUIRED IN CAPPER-CRAMPTON (STREAM VALLEY) SYSTEM IN MONTGOMERY AND PRINCE GEORGES COUNTIES—ACRES**

	Montgomery County	Prince Georges County	Total
Rock Creek .....	900	—	900
Cabin John Creek .....	91	—	91
Little Falls Branch .....	161	—	161
Sligo Creek .....	355	96	451
Northwest Branch .....	425	412	837
Paint Branch .....	—	167	167
Anacostia River .....	—	669	669
Oxon Run .....	—	17	17
Indian Creek .....	—	1	1
Total acreage—Stream Valley parks .....	1932	1362	3294
Total acreage—Local parks and Recreation centers (Outside Capper-Cramton system) .....	497	64	561
Total park system .....	2429	1426	3855

**STREAM VALLEY PARK LAND TO BE ACQUIRED**

	Montgomery County	Prince Georges County	Total
Rock Creek .....	500	—	500
Cabin John Creek .....	755	—	755
Little Falls Branch .....	10	—	10
Sligo Creek .....	6	3	9
Northwest Branch .....	865	94	959
Paint Branch .....	760	681	1441
Anacostia River .....	—	185	185
Oxon Run .....	—	91	91
Indian Creek .....	—	92	92
Total .....	2896	1146	4042

The Capper-Cramton park system gets its name from legislation passed by Congress in 1930. It authorizes a one-third grant by the Federal Government toward the cost of acquiring the land along the major stream valleys extending into Maryland from the District of Columbia. The remaining two-thirds as well as the cost of maintaining and developing the parks is provided by the Commission.

Facilities in the park system include:

	Montgomery County	Prince Georges County	Total
Picnic tables .....	700	300	1000
Outdoor fireplaces .....	95	113	208
Community buildings .....	23	3	26
Tennis courts .....	43	0	43
Basketball courts .....	13	3	16
Play equipment (sets) .....	54	24	78
Outdoor drinking fountains .....	27	12	39
Athletic fields .....	60	43	103





Chairman Pyles dedicates the Lane Manor Community Building.



Commissioner Oliver gives Lee O. Burris, president of the Cabin John Park Citizens' Association, the keys to the Cabin John Community Building.



Commissioner Oliver and George W. Fisher, president of the Four Corners Citizens' Association, at the dedication of the Four Corners Community Building.

Howard Dreyer, then president of the Lane Manor Citizens' Association, speaks at the dedication of the Lane Manor Recreation Center.







EXTERIOR VIEWS of the three new buildings. Above is the Cabin John Community Building in Cabin John Park adjacent to the Clara Barton Elementary School. Left, the North Four Corners Community Building at Edgewood and Southwood Roads, adjacent to the North Four Corners Elementary School. The Lane Manor Community Building is pictured below. It is in Northwest Branch Park at University Lane and West Park Drive. The Commission now has 26 community buildings in Montgomery and Prince Georges Counties. They are available free of charge to residents of both counties.







THIS IS HOW a portion of Northwest Branch Park in the Lane Manor area looked before the Commission began clearing and developing it last year.

HERE IS THE SAME AREA after it was cleared and developed with picnic tables, fireplaces and a small lake. The Commission has stocked the lake with fish and ducks.





COMMISSION CHAIRMAN PYLES dedicates the 10-acre Suitland Recreation Center. Its location adjacent to Suitland High School enables the students to use the park for some of their outdoor school activities.



GENERAL VIEW of the crowd attending dedication ceremonies at the Chillum Recreation Center in Northwest Branch Park adjacent to Chillum Road. The Commission has cleared and developed approximately 300 acres in this stream valley park.







PARK COMMISSIONER OLIVER speaks at ceremonies dedicating the Westmoreland Hills Recreation Center, one of 46 local parks made available by the Commission throughout the Metropolitan area of Montgomery and Prince Georges Counties.

HERE IS AN OVERALL VIEW of the 10-acre center. Play equipment and picnic tables are in the wooded area at the right.







CLEANING UP OPERATIONS in the Commission's Capitol Heights Playground, 57th Avenue and F Street. The Commission also has installed a fence along the 57th Avenue side of the playground to protect the children from traffic. This is one of six local parks covering over 60 acres which the Commission acquired during the year.

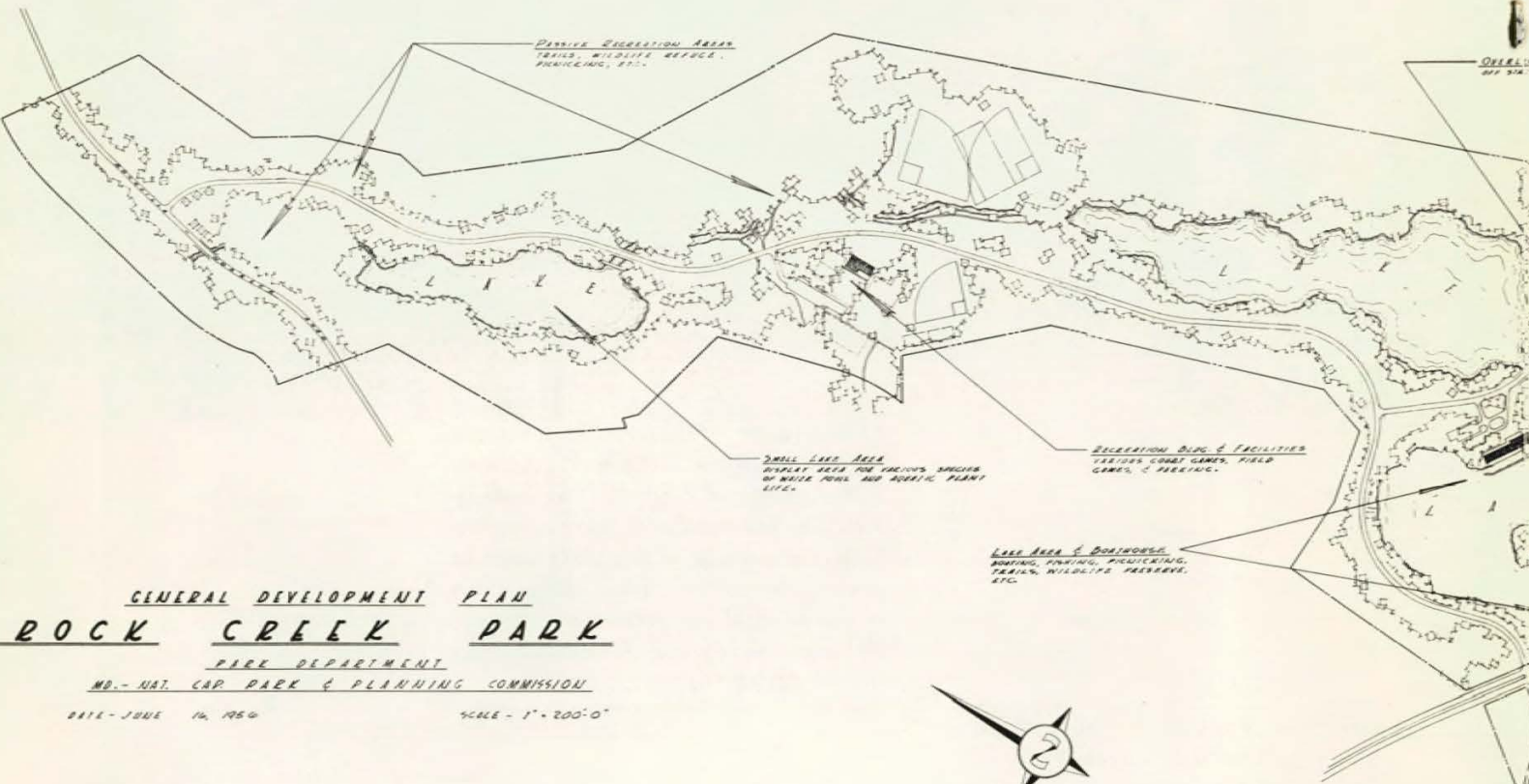
COMMISSION WORKMEN install a drinking fountain in Sligo Creek Park. A total of 18 fountains were installed throughout the park system in Montgomery and Prince Georges Counties during the last 12 months.



PARK WORKERS pave an open drainage channel in Sligo Creek Park in the Parklawn area. Similar projects are carried on in other portions of the Commission's park system to prevent erosion of stream banks.







GENERAL DEVELOPMENT PLAN  
ROCK CREEK PARK

PARK DEPARTMENT  
MD. - NAT. CAP. PARK & PLANNING COMMISSION  
 DATE - JUNE 14, 1950      SCALE - 1" = 200'-0"





FIELD AREA  
STREET PARKING AREA - 87 CARS

FIELD GAMES AREA  
SOFTBALL, BASEBALL, FOOTBALL,  
Soccer, ETC. PARKING 40 CARS.

BOUNCE GARDENS  
GREEN SPACE, MAINTENANCE AREA,  
C JUDGES, RECREATION GREENHOUSES,  
FLEETING BY-CAR OFFICES &  
RESTAURANT.

Active RECREATION CENTER  
TENNIS, BASEBALL, SOFTBALL, FOOTBALL,  
HOT LOG SHELTER, OVERFLOW  
PARKING - 1400 CARS.

FIELD HOUSE & FACILITIES  
INDOOR RECREATIONAL FACILITIES  
TENNIS, SOFTBALL, BASEBALL, HOCKEY,  
HARDBALL, ETC. OVERFLOW PARKING  
MEADOW AREA - 1400 CARS.

WOOD SPORTS CENTER  
STADIUM NIGHT LIGHTING FACILITIES,  
BASEBALL, COMPOST STATION, FISH CONSERVATION, &  
350 CAR PARKING, APPROXIMATE 6000 SEATING CAPACITY

AMPHIBIOUS AREA  
DUCK OUTLAP, SMALL POND AREA  
PICNICKING

NOTE:  
This is an "Area Recreation Center" designed in  
the Commission's "Master Plan of Schools, Parks, &  
Recreation."



PASSIVE RECREATION AREA  
 NATURAL AREA SURROUNDING POND,  
 PICNIC AREAS, TRAILS, BRIDLE PATHS, ETC.

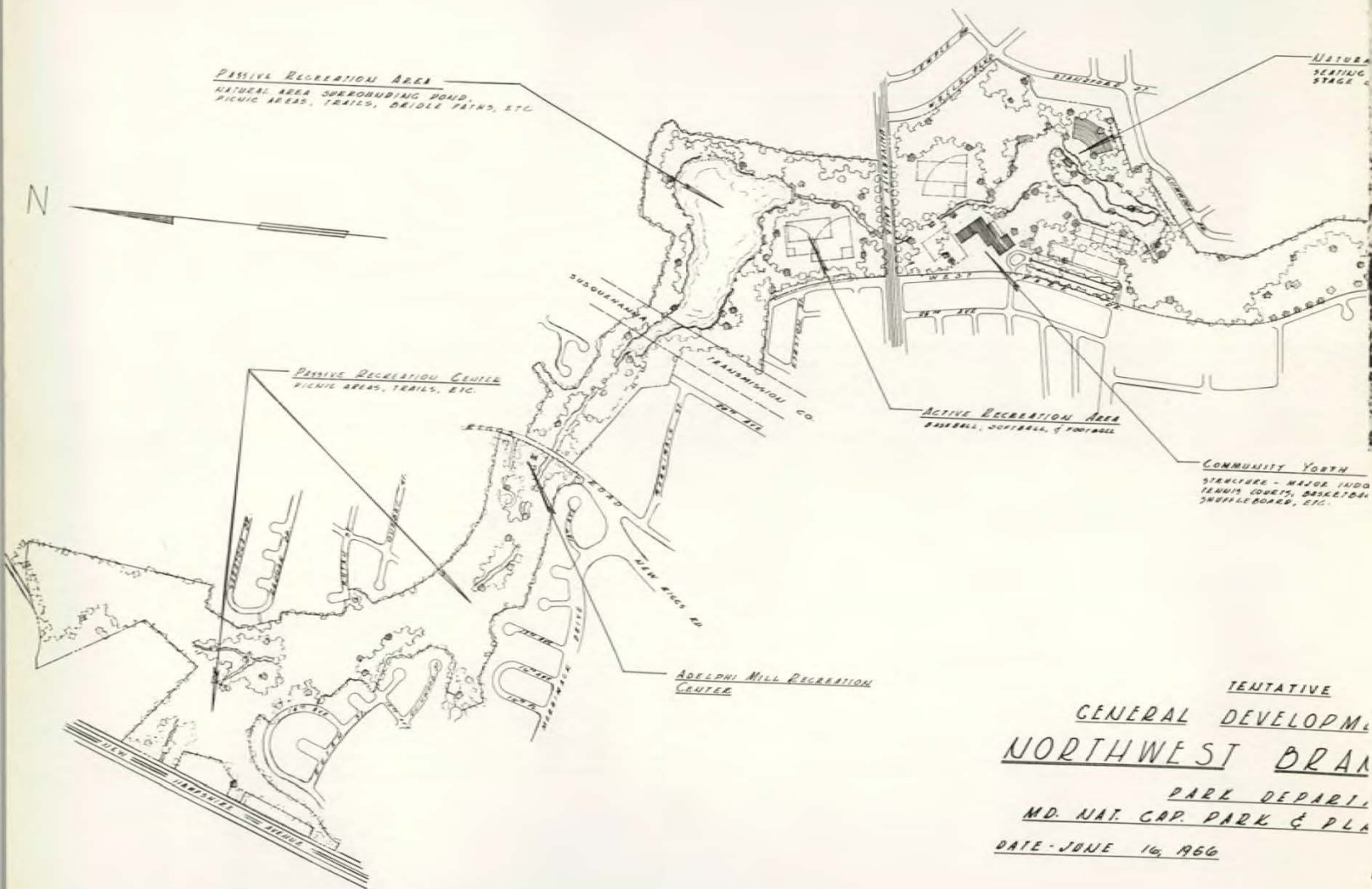
PASSIVE RECREATION CENTER  
 PICNIC AREAS, TRAILS, ETC.

ADELPHI HILL RECREATION CENTER

ACTIVE RECREATION AREA  
 BASEBALL, SOFTBALL, FOOTBALL

COMMUNITY YOUTH  
 STRUCTURE - MAJOR LAID  
 TENNIS COURTS, BASKETBALL  
 SHUFFLEBOARD, ETC.

NATURAL SEATING STAGE



TENTATIVE  
 GENERAL DEVELOPMENT  
NORTHWEST BRANCH  
 PARK DEPARTMENT  
 MD. NAT. CAP. PARK & PLANNING  
 DATE - JUNE 16, 1966



AMPHITHEATER  
ON NATURAL SLOPE  
IN ISLAND AREA

ACTIVE RECREATION CENTER

RECREATION BLDG. - HALL, GAME ROOMS, ETC.  
BASEBALL, FOOTBALL, SOFTBALL, TENNIS,  
BADMINTON, HORSESHOES, VOLLEYBALL, TCI AREA.

PASSIVE RECREATION AREA  
OVERLOOKS - BEACHES, WALKS IN  
NATURAL LANDSCAPED AREA. MASS  
PLANTING OF FLOWERS & SHRUBS.  
PICNIC AREAS.

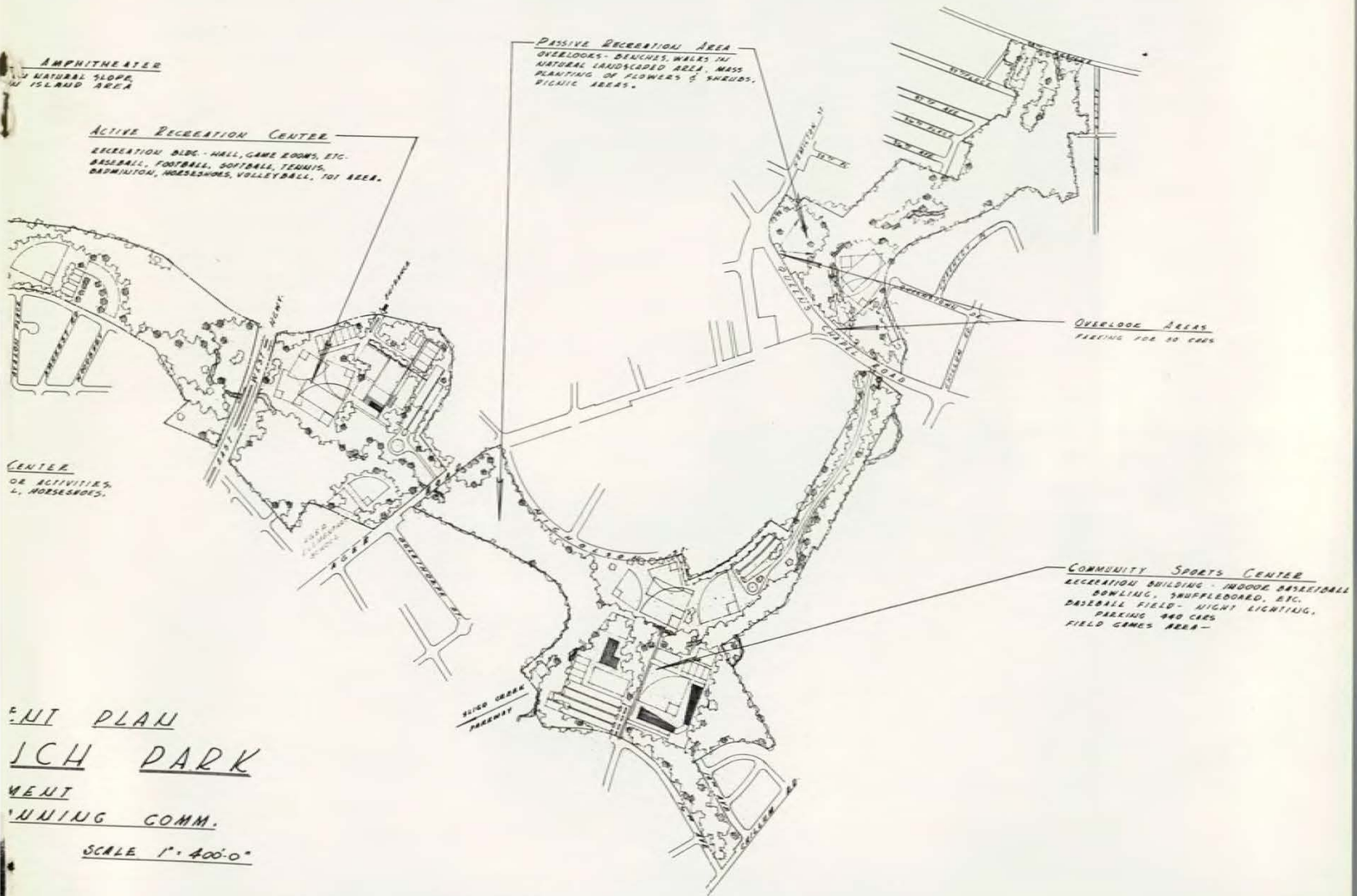
OVERLOOK AREAS  
PARKING FOR 20 CARS

COMMUNITY SPORTS CENTER  
RECREATION BUILDING - INDOOR BASEBALL  
BOWLING, SHUFFLEBOARD, ETC.  
BASEBALL FIELD - NIGHT LIGHTING,  
PARKING 900 CARS  
FIELD GAMES AREA -

CENTER  
OR ACTIVITIES  
L. HORSESHOES.

FINAL PLAN  
WILSON PARK  
RECREATION  
PLANNING COMM.

SCALE 1" = 400'-0"







AS PART OF ITS PARK development program during the year, the Commission restored the spring and surrounding park area for which Silver Spring is named. Blair Lee, III, great-great-grandson of Francis Preston Blair, who discovered the spring in the early 1840s, is pictured at ceremonies dedicating the area at East-West Highway, Newell Street and Blair Mill Road. Mr. Lee is chairman of the Montgomery County delegation to the Maryland General Assembly.

HERE IS A GENERAL VIEW of the park. The spring is recessed in the flagstone wall in the center of the picture. The acorn-like structure in the foreground, which also was restored by the Commission, was once the scene of frequent visits by Washington notables, including Abraham Lincoln.







COMMISSIONER OLIVER pulls the draw-cord to begin the unveiling of the spring.

AND THERE IT IS—the unveiling completed.







THE FIRST FOUR PHOTOS at left show construction progress on the Commission's first greenhouse, which was completed last winter. Located in Rock Creek Park, it is used to propagate shrubs and trees for planting throughout the park system. The all-metal prefabricated structure has automatic temperature and moisture controls and is the first in a group of similar buildings to be erected by the Commission, as funds become available.

By means of these greenhouses, the Commission hopes to be able to supply all of its plant material for park use. At present, most of this material is purchased from wholesale nurseries.

At bottom, center, are park nurserymen cultivating and mulching pine seedlings in a portion of the newly established nursery adjacent to the greenhouse. Approximately 7,000 of these seedlings have been planted. The entire area has an underground watering system.







RESIDENTS OF THE AREA served by the Commission frequently donate their services and materials to help beautify park facilities. Here, members of the Hillandale Women's Club hang curtains in the Hillandale Recreation Center.

SOMETIMES, DEVELOPERS donate land for parks. In this photo, Kenneth Frank (left), developer of the Palmer Park community in Prince Georges County, gives Commission members a deed to 26 acres of future park land in the area.

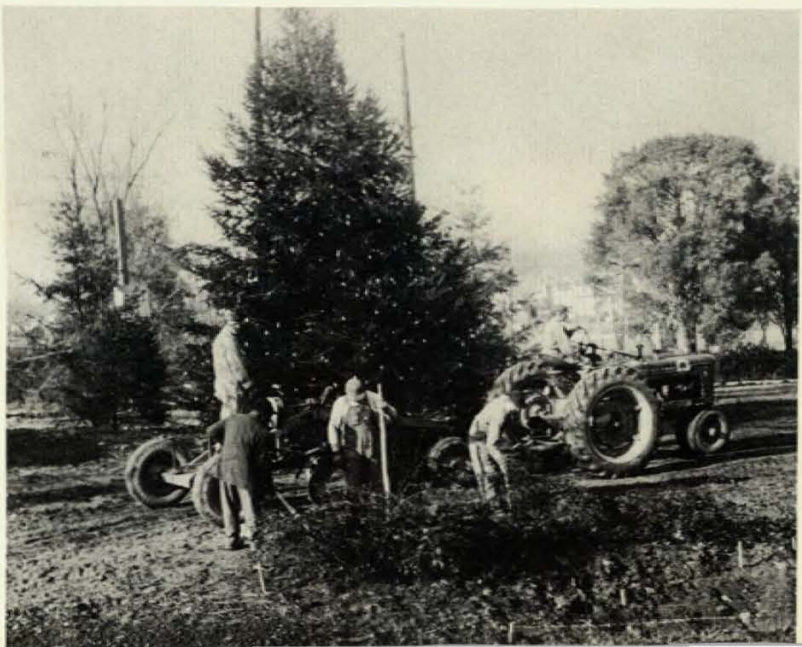


MISS E. PEARLE BAYLY, of Washington, turns over a portrait of Henry Clay to Commission Chairman Pyles for display in the Commission's Prince Georges County regional office in the Calvert Mansion. One of the rooms in the mansion frequently was used by Clay and he reportedly wrote much of the Missouri Compromise there.





AS PART OF ITS PARK beautification program, the Commission planted nearly 3,000 trees and shrubs during the past year. These photos show park workers planting a 25-foot spruce in Rock Creek Park at East-West Highway and Jones Mill Road. In addition, a reflecting pool was put in between the tree and East-West Highway.







X

HERE IS THE SAME TREE, illuminated during the Christmas season. The sign and the Santa Claus and reindeer were made by the Park Department. Looking over the display are Park Commissioner Oliver and Director of Parks Hewitt. A similar exhibit was erected at Sligo Creek Parkway and Colesville Road.





THE COMMISSION'S public information program includes free guided bus tours of the area under its jurisdiction for interested organizations and individuals. Here are members of the Wednesday Club of Sandy Spring preparing to take such a tour.

OTHERS TAKING ADVANTAGE of this service during the year included these Prince Georges County teachers. Arrangements for the tours are made by the Commission's Director of Public Relations.







THE COMMISSION also sponsors a radio program from 3:45 to 4 p.m. every other Sunday on Station WGAY to explain its activities and answer questions sent in by residents of the two counties. Shown on one of the programs are (left to right) John Cooley, station announcer; Director of Parks Hewitt, Park Commissioner Oliver, Director of Public Relations Zatman and Highway Engineer Adams.

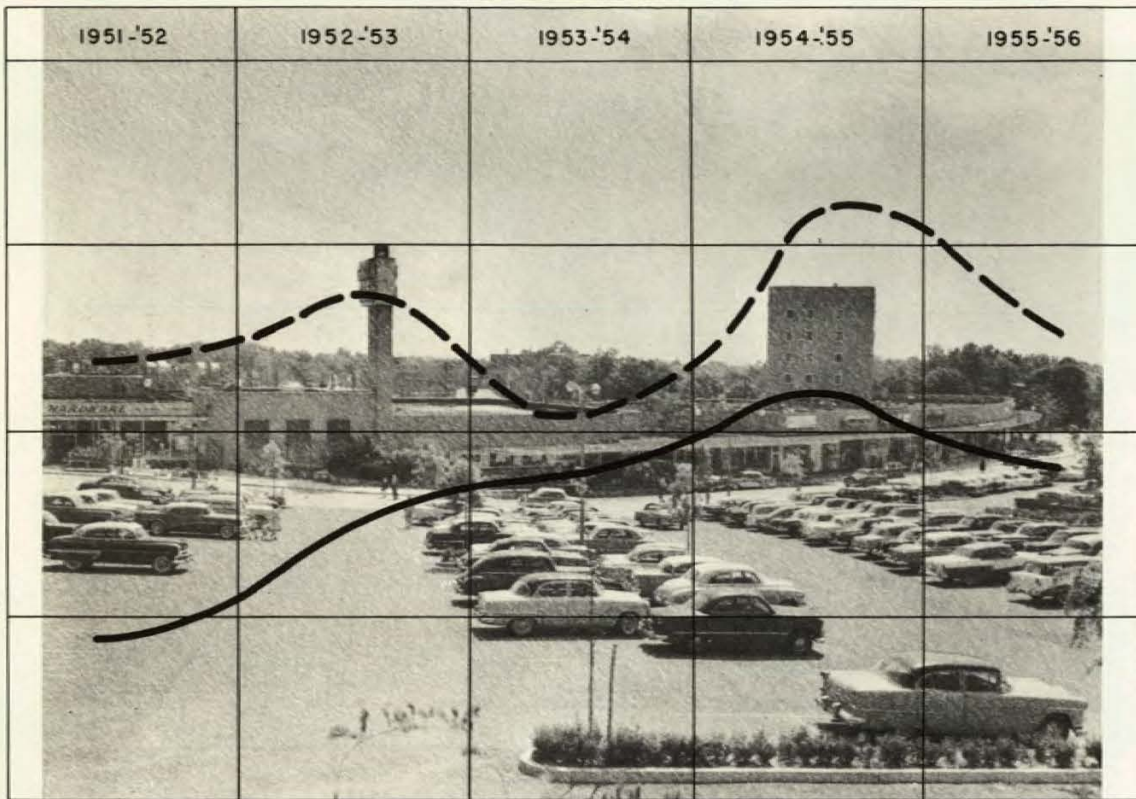
CONTRIBUTING to the Commission's achievements is its able and dedicated staff. In this picture, Chairman Pyles poses with 13 longtime employees who were honored after having completed a total of 208 years of service.





THESE CHARTS show the types of zoning sought and the total number of zoning petitions on which the Commission and technical staff gave advisory opinions during the last five years.

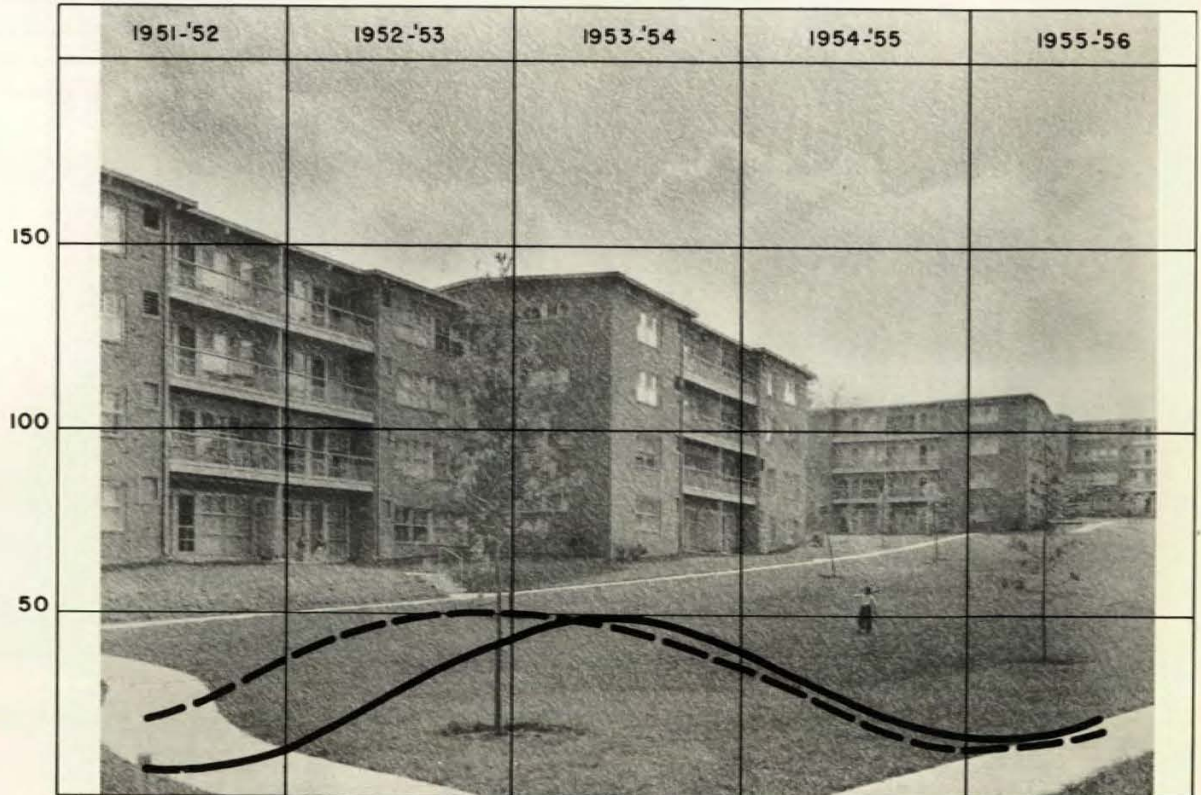
### COMMERCIAL



5 YEAR TOTAL  
401  
659

———— MONTGOMERY  
- - - - PRINCE GEORGES

### APARTMENT

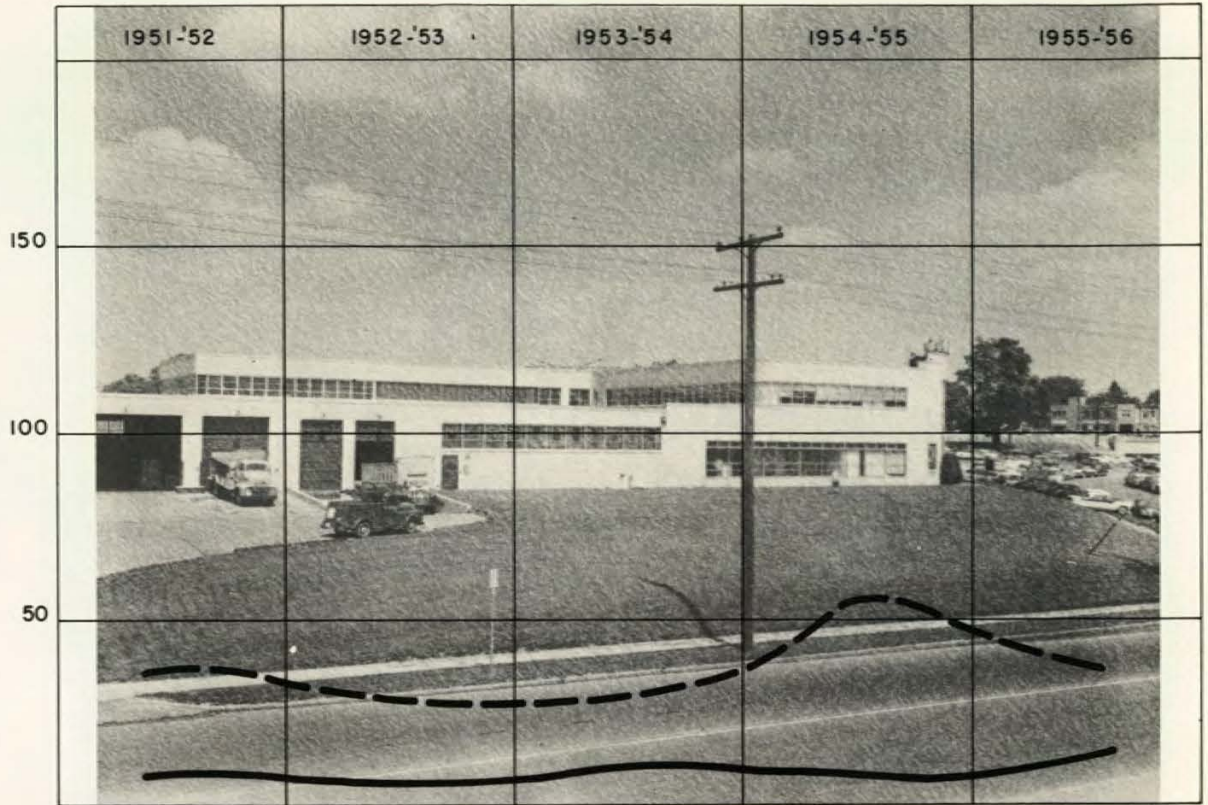


5 YEAR TOTAL  
129  
170

———— MONTGOMERY  
- - - - PRINCE GEORGES



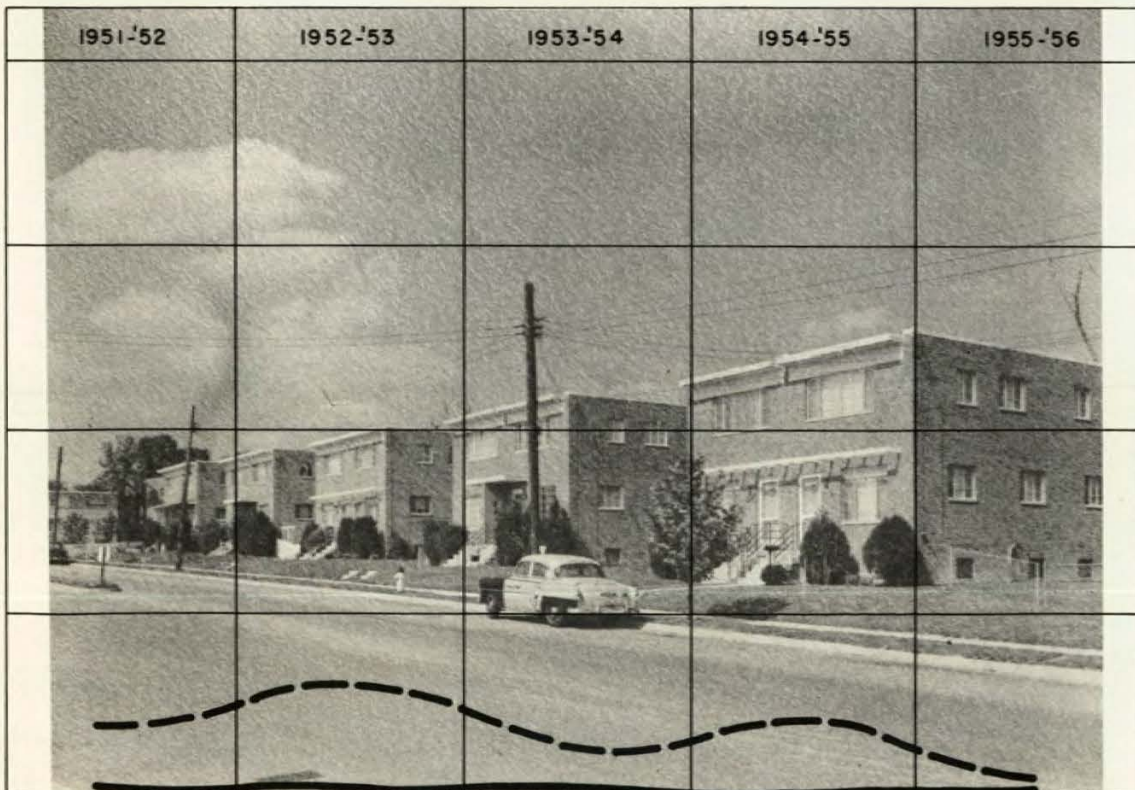
# INDUSTRIAL



## SEMI-DETACHED

MONTGOMERY  
 PRINCE GEORGES

5 YEAR TOTAL  
 43  
 197



MONTGOMERY  
 PRINCE GEORGES

5 YEAR TOTAL  
 7  
 94



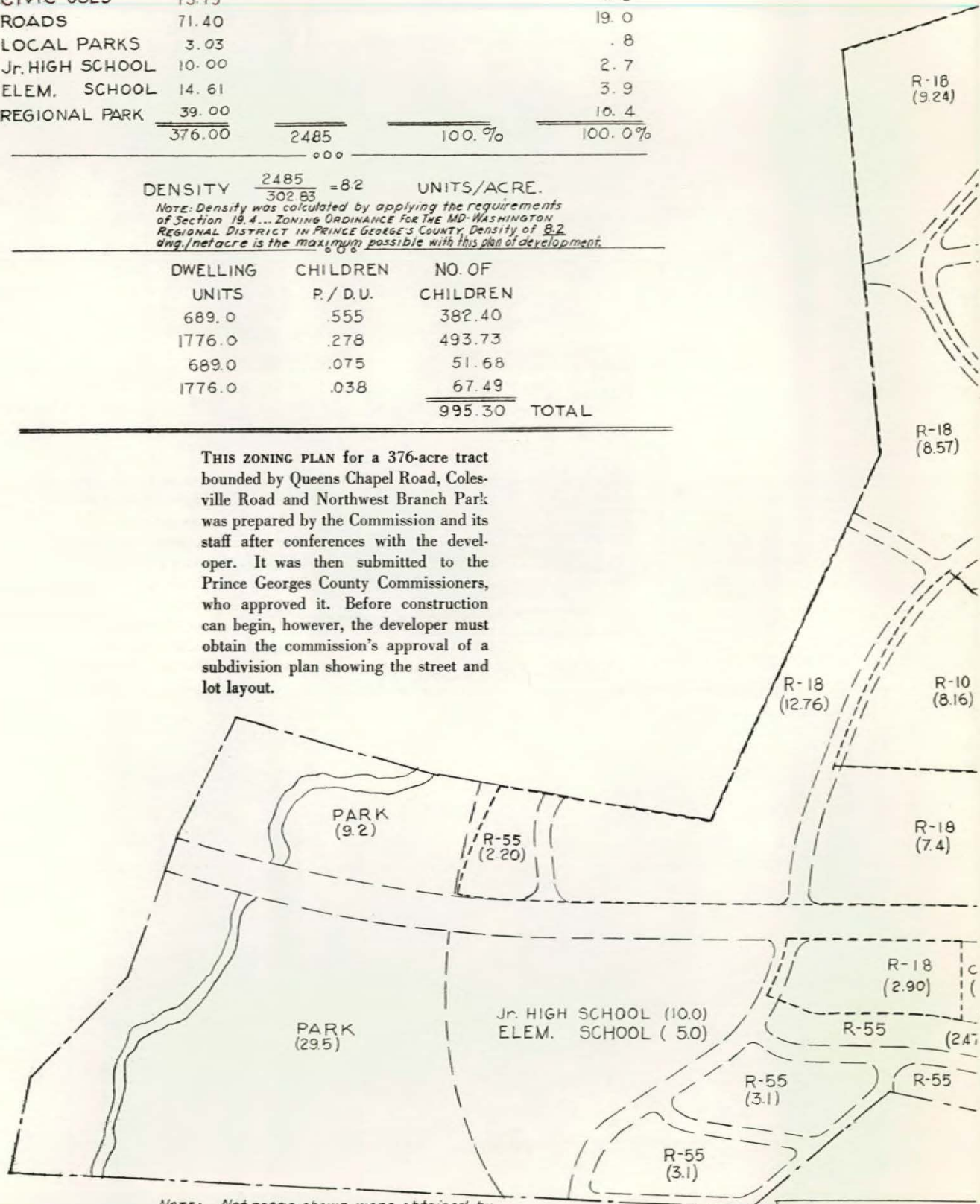
	NET AREA	DWG. UNITS	% DWG. UNITS	% TOTAL AREA
R-55	114.80 X 6	689.0	27.7	30.5
R-18	60.24 X 24	1445.0	58.2	16.0
R-10	8.16 X 43	351.0	14.1	2.2
C-2	39.56			10.5
CIVIC USES	15.19			4.0
ROADS	71.40			19.0
LOCAL PARKS	3.03			.8
Jr. HIGH SCHOOL	10.00			2.7
ELEM. SCHOOL	14.61			3.9
REGIONAL PARK	39.00			10.4
	<u>376.00</u>	<u>2485</u>	<u>100.0%</u>	<u>100.0%</u>

DENSITY  $\frac{2485}{302.83} = 8.2$  UNITS/ACRE.

Note: Density was calculated by applying the requirements of Section 19.4... ZONING ORDINANCE FOR THE MD-WASHINGTON REGIONAL DISTRICT IN PRINCE GEORGE'S COUNTY, Density of 8.2 dwg./netacre is the maximum possible with this plan of development.

DWELLING UNITS	CHILDREN P./D.U.	NO. OF CHILDREN
689.0	555	382.40
1776.0	278	493.73
689.0	.075	51.68
1776.0	.038	67.49
		<u>995.30</u> TOTAL

THIS ZONING PLAN for a 376-acre tract bounded by Queens Chapel Road, Colesville Road and Northwest Branch Park was prepared by the Commission and its staff after conferences with the developer. It was then submitted to the Prince Georges County Commissioners, who approved it. Before construction can begin, however, the developer must obtain the commission's approval of a subdivision plan showing the street and lot layout.



NOTE: Net areas shown were obtained by planimeter.

NOTE: Street pattern as shown is schematic, and does not necessarily represent final location. Topography with 2' contour is required to prepare grading plans for the street locations, drainage, the installation of utilities, and site plans.

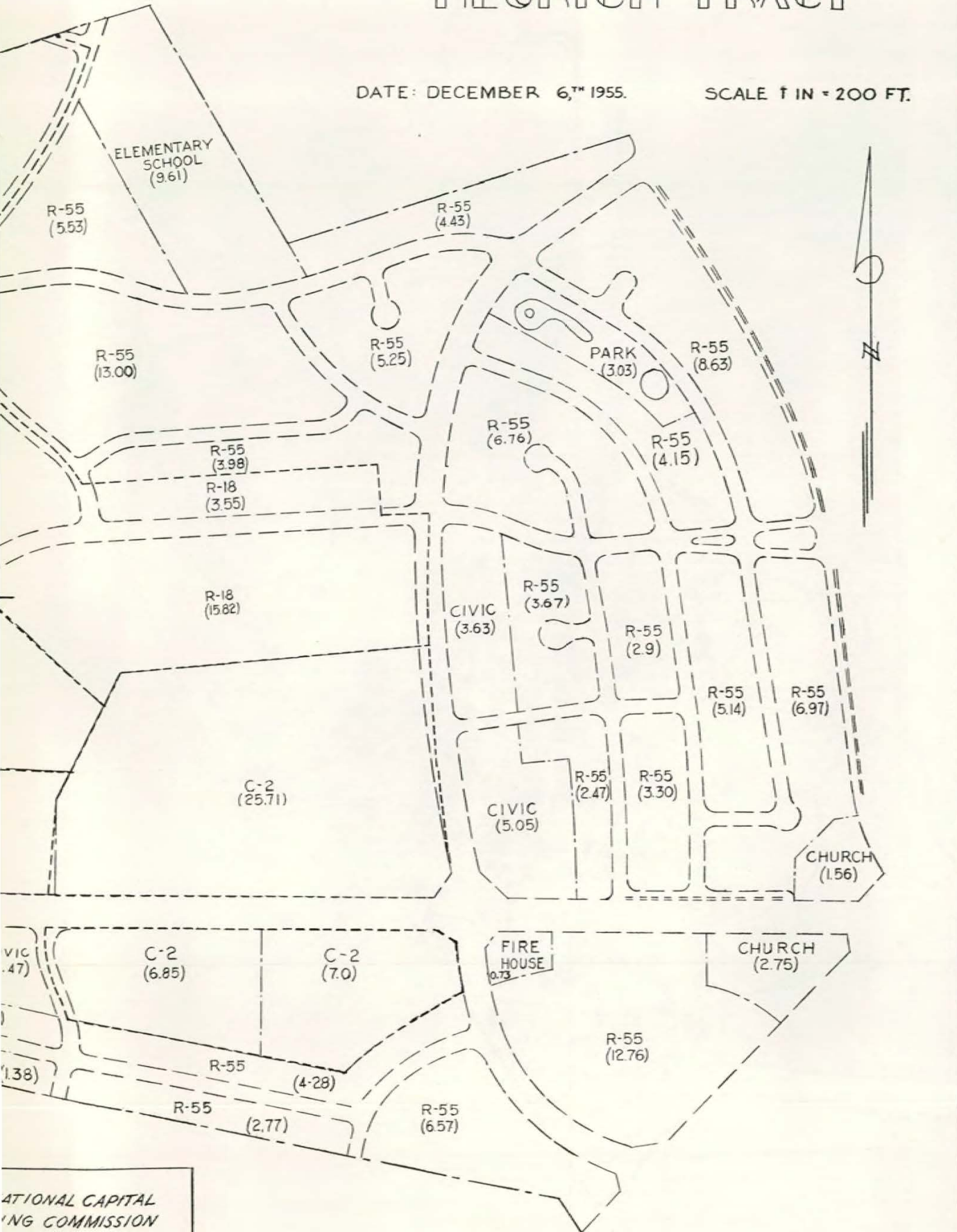
THE MARYLAND PARK AND PLANNING REGIONAL DISTRICT



# PROPOSED ZONING PLAN HEURICH TRACT

DATE: DECEMBER 6, 1955.

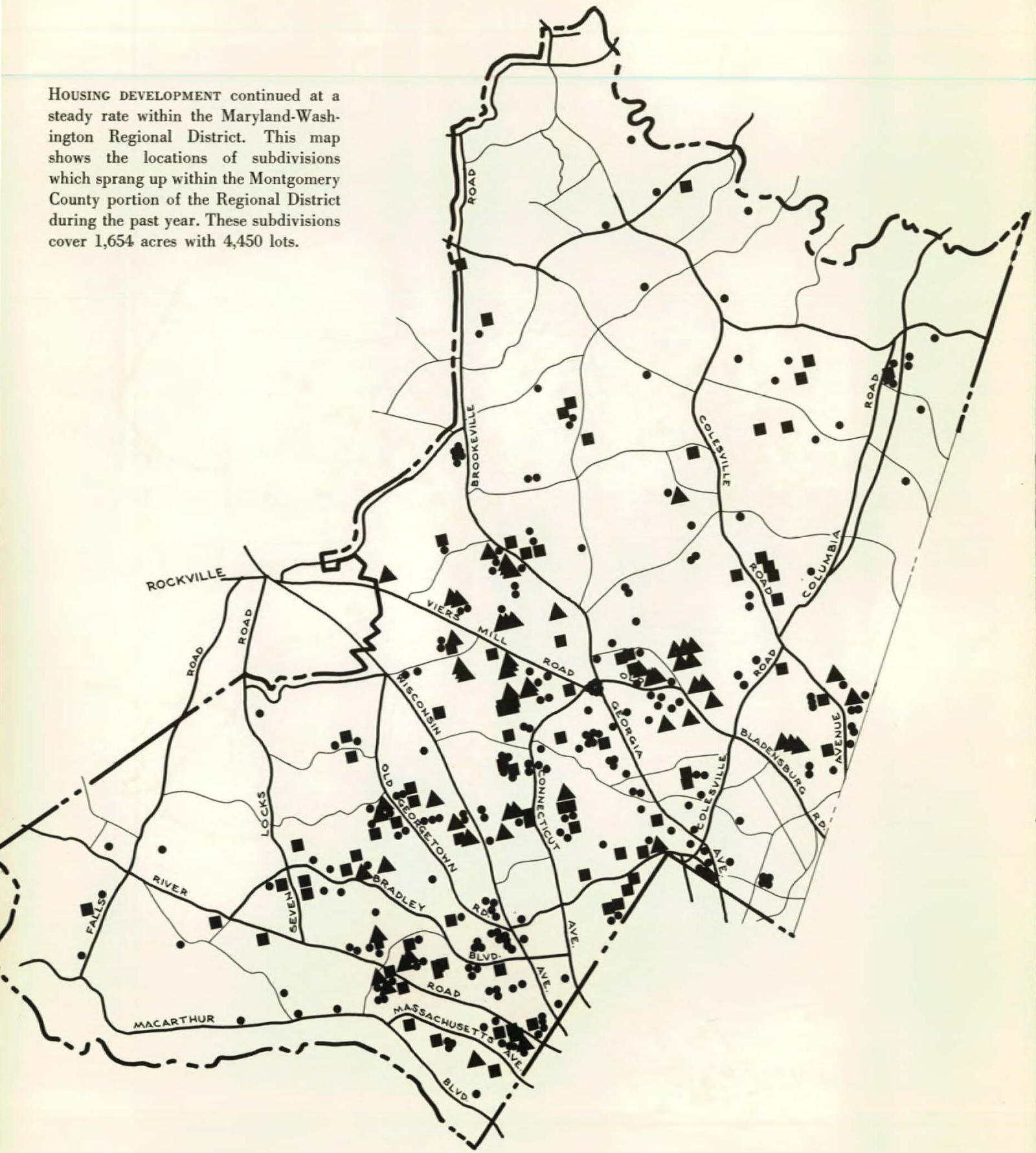
SCALE 1 IN = 200 FT.



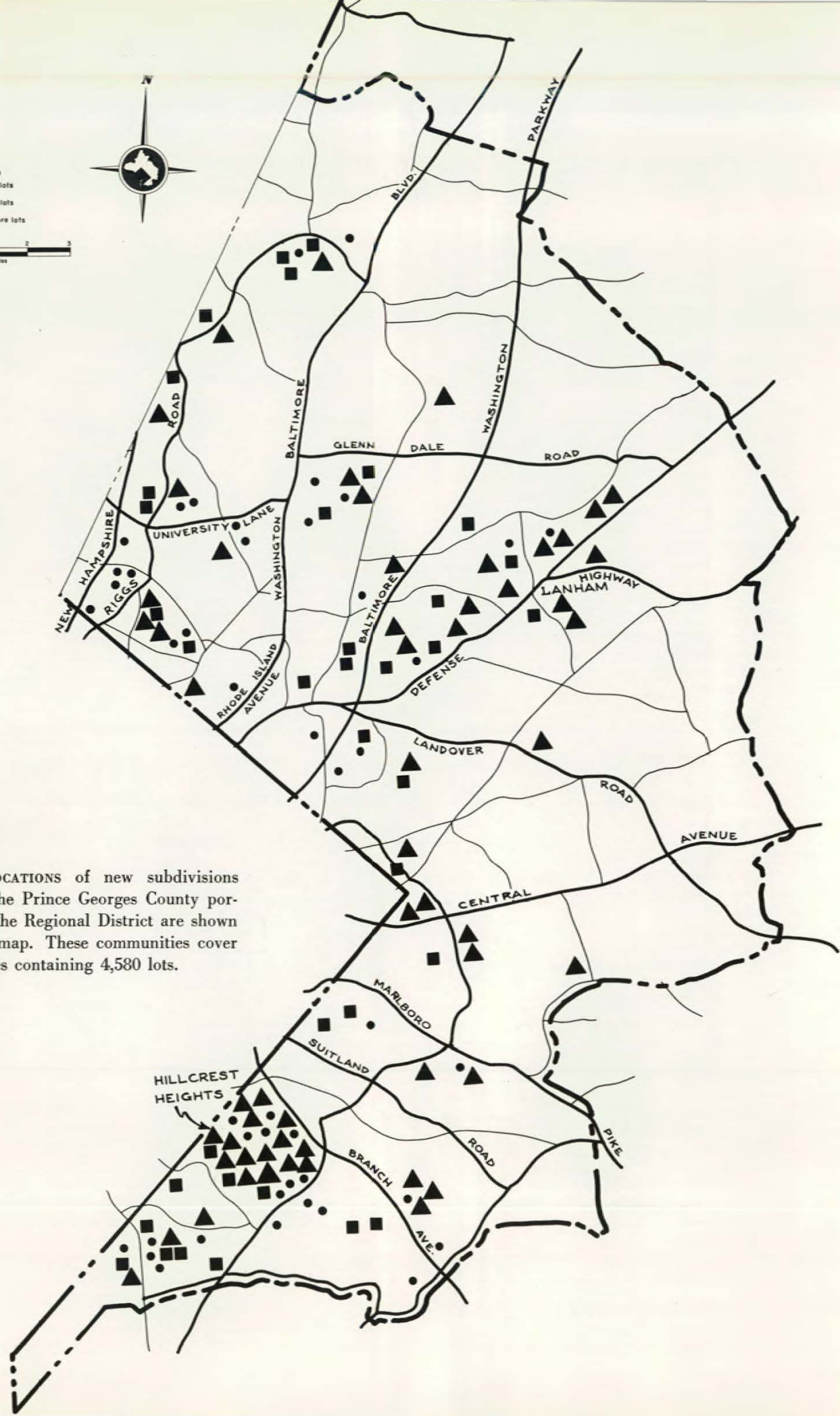
NATIONAL CAPITAL  
ZONING COMMISSION  
MORGAN COUNTY  
OFFICE



HOUSING DEVELOPMENT continued at a steady rate within the Maryland-Washington Regional District. This map shows the locations of subdivisions which sprang up within the Montgomery County portion of the Regional District during the past year. These subdivisions cover 1,654 acres with 4,450 lots.







THE LOCATIONS of new subdivisions within the Prince Georges County portion of the Regional District are shown on this map. These communities cover 940 acres containing 4,580 lots.



**THE MARYLAND-NATIONAL CAPITAL PARK AND PLANNING COMMISSION**  
**STATEMENT OF CASH RECEIPTS AND DISBURSEMENTS**  
**FOR THE FISCAL YEAR MAY 1, 1955 TO APRIL 30, 1956 INCLUSIVE**  
**ADMINISTRATION FUND**

	Montgomery County	Prince Georges County	Total
BALANCE—May 1, 1955 .....	\$ 26,654.19	\$ 7,823.10	\$ 34,477.29
<b>RECEIPTS:</b>			
Tax Levy 3¢ .....	\$208,466.96	\$133,247.34	\$341,714.30
Plat Fees .....	15,982.90	7,465.36	23,448.26
Recording Fees .....	1,176.00	780.00	1,956.00
Sale of Prints and Maps .....	3,880.75	2,740.29	6,621.04
Sale of Zoning Ordinances .....	106.75	252.00	358.75
Zoning Signs and Special Exception Fees .....	-----	2,740.00	2,740.00
Street Indexes .....	-----	183.00	183.00
Sale of Hoyt Reports .....	818.70	115.50	934.20
Proceeds Tax Anticipation Notes .....	100,000.00	70,000.00	170,000.00
Dividends—Building and Loan Deposits .....	312.93	327.24	640.17
Refund of Telephone Expense .....	453.61	53.73	507.34
Refund from Insurance .....	248.28	1,333.08	1,581.36
Refund—Printing Cost—Economic Survey .....	2,360.53	1,676.88	4,037.41
Refund—State Roads Commission—Legal Fees .....	433.50	-----	433.50
Refund—Highway and Freeway Study .....	-----	1,500.00	1,500.00
Refund—Other Expense .....	-----	23.78	23.78
Rent—Office Space .....	-----	175.00	175.00
Miscellaneous .....	70.40	78.83	149.23
<b>Total Receipts .....</b>	<b>\$334,311.31</b>	<b>\$222,692.03</b>	<b>\$557,003.34</b>
Transfer from Park Fund .....	\$ 7,000.00	\$ 16,670.00	\$ 23,670.00
<b>Total Available .....</b>	<b>\$367,965.50</b>	<b>\$247,185.13</b>	<b>\$615,150.63</b>
<b>DISBURSEMENTS:</b>			
Commissioners' Salaries and Expense Allowances .....	\$ 10,500.00	\$ 5,700.00	\$ 16,200.00
Administrative Salaries .....	35,394.09	29,651.39	65,045.48
Planning Salaries .....	114,437.82	88,543.67	202,981.49
Office Expense .....	6,856.08	4,233.52	11,089.60
Publication of Notices .....	2,828.49	1,138.63	3,967.12
Books, Periodicals and Technical Publications .....	1,675.49	846.82	2,522.31
Professional Services .....	18,355.24	4,077.32	22,432.56
Stationery and Printing .....	25,154.61	14,404.35	39,558.96
Telephone and Postage .....	6,389.65	4,813.77	11,203.42
Equipment .....	4,345.20	2,219.65	6,564.85
Plat Recording .....	1,248.00	795.00	2,043.00
Maintenance and Repairs .....	7,871.52	7,969.41	15,840.93
Travel Expense and Mileage .....	885.01	562.01	1,447.02
Insurance and Bond Premiums .....	891.72	445.58	1,337.30
Employees Retirement Expense .....	8,096.49	6,146.65	14,243.14
Highway and Freeway Study .....	125.00	4,215.00	4,340.00
Topographic Survey .....	13,273.25	-----	13,273.25
Payment of Tax Anticipation Note .....	100,000.00	70,000.00	170,000.00
Interest on Tax Anticipation Note .....	666.74	386.69	1,053.43
Refund of Fees .....	87.00	268.24	355.24
Miscellaneous .....	1,269.21	760.60	2,029.81
<b>Total Disbursements .....</b>	<b>\$360,350.61</b>	<b>\$247,178.30</b>	<b>\$607,528.91</b>
Balance—April 30, 1956 .....	\$ 7,614.89	\$ 6.83	\$ 7,621.72



## PARK FUND—GENERAL

	Montgomery County	Prince Georges County	Total
BALANCE—MAY 1, 1955 .....	\$ 3,036.05	\$ 676.84	\$ 3,712.89
<b>RECEIPTS:</b>			
Tax Levy 7¢ .....	\$478,121.00	\$ .....	\$ 478,121.00
Tax Levy 5¢ .....	.....	181,261.95	181,261.95
Rentals .....	4,290.00	5,790.00	10,080.00
Recreational Concessions .....	3,292.64	.....	3,292.64
Refund from Montgomery County of 75% of the Maintenance Cost of Park Recreational Facilities .....	156,695.62	.....	156,695.62
Reimbursement of Building Maintenance Expense .....	2,613.10	.....	2,613.10
Refund of Telephone Expense .....	256.65	8.22	264.87
Refund from Insurance .....	2,181.73	428.13	2,609.86
Refund of Gasoline Tax .....	741.90	654.84	1,396.74
Refund of Travel Advances .....	244.00	.....	244.00
Reimbursement—Series "K" Bonds .....	8,855.00	.....	8,855.00
Interest .....	250.00	.....	250.00
Reimbursement—State Roads Commission .....	645.11	.....	645.11
Sale of Equipment .....	58.86	8.39	67.25
Sale of Land .....	.....	18,755.00	18,755.00
Proceeds of Tax Anticipation Notes .....	300,000.00	110,000.00	410,000.00
Donations for Playground Equipment .....	.....	1,305.98	1,305.98
Miscellaneous .....	88.24	24.17	112.41
<b>Total Receipts .....</b>	<b>\$958,333.85</b>	<b>\$318,236.68</b>	<b>\$1,276,570.53</b>
Transfer from Special Acquisition and Development Fund .....	\$ .....	\$ 5,000.00	\$ 5,000.00
<b>Total Available .....</b>	<b>\$961,369.90</b>	<b>\$323,913.52</b>	<b>\$1,285,283.42</b>
<b>DISBURSEMENTS:</b>			
Park Salaries .....	\$ 74,954.05	\$ 43,748.45	\$ 118,702.50
Maintenance and Development Labor .....	269,437.70	89,985.03	359,422.73
Insurance .....	15,239.78	3,146.31	18,386.09
Telephone .....	2,791.21	218.28	3,009.49
Equipment .....	43,046.15	154.00	43,200.15
Auto, Truck and Tractor Expense .....	30,571.15	18,525.18	49,096.33
Park Building Maintenance .....	50,841.05	7,198.99	58,040.04
Road and Ground Maintenance .....	22,364.05	5,864.20	28,228.25
Park Development .....	31,635.59	601.20	32,236.79
Travel Expense .....	2,557.41	819.89	3,377.30
Land Purchases .....	22,261.58	.....	22,261.58
Land Acquisition Costs .....	4,071.65	1,050.00	5,121.65
Bond Principal .....	43,000.00	11,000.00	54,000.00
Bond Interest and Expense .....	23,018.42	7,284.20	30,302.62
Employees Retirement Expense .....	8,226.77	3,797.14	12,023.91
Payment of Tax Anticipation Notes .....	300,000.00	110,000.00	410,000.00
Advance—Architects Fee—Office Building .....	5,584.40	.....	5,584.40
Rent—Lot .....	.....	120.00	120.00
Supplies .....	697.76	292.15	989.91
Police Equipment and Allowances .....	1088.08	1,000.89	2,088.97
Interest Paid .....	2,237.15	724.47	2,961.62
Refund—Cabin Rent .....	20.00	.....	20.00
Miscellaneous .....	667.71	544.16	1,211.87
<b>Total Disbursements .....</b>	<b>\$954,311.66</b>	<b>\$306,074.54</b>	<b>\$1,260,386.20</b>
Transfer to Administration Fund .....	7,000.00	16,670.00	23,670.00
	<b>\$961,311.66</b>	<b>\$322,744.54</b>	<b>\$1,284,056.20</b>
Balance—April 30, 1956 .....	\$ 58.24	\$ 1,168.98	\$ 1,227.22



## PARK FUND—SPECIAL ACQUISITION AND DEVELOPMENT ACCOUNT

	Montgomery County	Prince Georges County	Total
BALANCE—May 1, 1955.....	\$196,338.67	\$153,796.60	\$350,135.27
<b>RECEIPTS:</b>			
Interest on Time Deposits.....	\$ 1,750.00	\$ 1,700.00	\$ 3,450.00
Sale of Land Adjacent Sligo Creek Park, Unit #6.....	7,404.49	.....	7,404.49
Refund of Taxes—Land Acquisition.....	15.00	.....	15.00
<b>Total Receipts</b> .....	<b>\$ 9,169.49</b>	<b>\$ 1,700.00</b>	<b>\$ 10,869.49</b>
<b>Total Available</b> .....	<b>\$205,508.16</b>	<b>\$155,496.60</b>	<b>\$361,004.76</b>
<b>DISBURSEMENTS:</b>			
<b>Land Acquisition:</b>			
Land Purchases .....	\$132,820.55	\$ 15,000.00	\$147,820.55
Land Acquisition Costs.....	1,857.31	1,093.59	2,950.90
<b>Total Land Costs</b> .....	<b>\$134,677.86</b>	<b>\$ 16,093.59</b>	<b>\$150,771.45</b>
<b>Development:</b>			
Architects .....	\$ 65.00	\$ .....	\$ 65.00
Backstops and Fencing.....	1,165.10	1,700.92	2,866.02
Bridges .....	1,918.55	.....	1,918.55
Clearing, Grading and Topping.....	7,658.17	10,562.65	18,220.82
Community Buildings .....	52,909.44	7,917.82	60,827.26
Drinking Fountains .....	220.32	3,263.01	3,483.33
Engineering Surveys .....	2,648.25	184.17	2,832.42
Equipment—Construction .....	93.63	7,377.69	7,471.32
Fireplaces and Tables.....	1,245.55	181.13	1,426.68
Playground Equipment .....	1,299.00	5,113.82	6,412.82
Shrubs, Trees and Planting.....	.....	154.41	154.41
Tennis and Basketball Courts.....	348.77	.....	348.77
<b>Total Development Costs</b> .....	<b>\$ 69,571.78</b>	<b>\$ 36,455.62</b>	<b>\$106,027.40</b>
<b>Total Disbursements</b> .....	<b>\$204,249.64</b>	<b>\$ 52,549.21</b>	<b>\$256,798.85</b>
Transfer to Park Fund—General.....	\$ .....	\$ 5,000.00	\$ 5,000.00
<b>Balance—April 30, 1956</b> .....	<b>\$204,249.64</b>	<b>\$ 57,549.21</b>	<b>\$261,798.85</b>
	<b>\$ 1,258.52</b>	<b>\$ 97,947.39</b>	<b>\$ 99,205.91</b>

## PARK FUND—CAPPER-CRAMTON ACCOUNT—MONTGOMERY COUNTY

	Balance May 1, 1955	Receipts	Disbursements	Balance April 30, 1956
<b>ROCK CREEK PARK, UNIT #4:</b>				
Balance—Beginning .....	\$ 14,914.48			
Receipts—None .....				
Disbursements—None .....				
<b>Balance Ending</b> .....				<b>\$ 14,914.48</b>



<b>SLIGO CREEK PARK, UNIT #4:</b>			
Balance—Beginning .....	3,634.19		
Receipts—None .....			
Disbursements—None .....			
Balance Ending .....			3,634.19
<b>LITTLE FALLS BRANCH PARK, UNIT #2:</b>			
Balance—Beginning .....	139,877.32		
Receipts—Interest, Time Deposit .....		\$2,000.00	
Disbursements:			
Land Purchases .....			\$5,250.00
Land Acquisition Costs .....			326.75
Balance—Ending .....			136,300.57
Total—Montgomery County .....	<u>\$158,425.99</u>	<u>\$2,000.00</u>	<u>\$5,576.75</u>
			<u>\$154,849.24</u>

**PARK FUND—CAPPER-CRAMTON ACCOUNT—PRINCE GEORGES COUNTY**

	Balance May 1, 1955	Receipts	Disbursements	Balance April 30, 1956
<b>ANACOSTIA RIVER PARK, UNIT #1:</b>				
Balance—Beginning .....	\$ 19,964.47			
Receipts .....		\$ 10.00		
Disbursements:				
Land Purchases .....			\$ 200.00	
Land Acquisition Costs .....			909.69	
Balance—Ending .....				\$ 18,864.78
<b>ANACOSTIA RIVER PARK, UNIT #2:</b>				
Balance—Beginning .....	54,633.91			
Receipts—Interest—Time Deposit .....		1,000.00		
Disbursements:				
Land Acquisition Costs .....			30.00	
Balance—Ending .....				55,603.91
<b>SLIGO CREEK PARK, UNIT #5:</b>				
Balance—Beginning .....	33,608.37			
Receipts—Interest—Time Deposit .....		600.00		
Disbursements:				
Land Purchases .....			6,581.00	
Land Acquisition Costs .....			340.38	
Balance—Ending .....				27,286.99
<b>NORTHWEST BRANCH PARK, UNIT #1:</b>				
Balance—Beginning .....	184,223.21			
Receipts—Interest—Time Deposit .....		3,400.00		
Disbursements:				
Land Purchases .....			5,769.70	
Land Acquisition Costs .....			865.12	
Balance—Ending .....				180,988.39
<b>PAINT BRANCH PARK, UNIT #1:</b>				
Balance—Beginning .....	7,508.92			
Receipts—Refund of Taxes Paid .....		8.88		
Disbursements:				
Land Purchases .....			3,042.00	
Land Acquisition Costs .....			338.25	
Balance—Ending .....				4,137.55
Total—Prince Georges County .....	<u>\$299,938.88</u>	<u>\$5,018.88</u>	<u>\$18,076.14</u>	<u>\$286,881.62</u>
Total—Both Counties .....	<u>\$458,364.87</u>	<u>\$7,018.88</u>	<u>\$23,652.89</u>	<u>\$441,730.86</u>



## BOND ISSUE DEBT SERVICE ACCOUNTS

	Montgomery County Recreation	Prince Georges County Flood Control	Total
BALANCE—May 1, 1955.....	\$29,535.00	\$.....	\$29,535.00
RECEIPTS:			
Tax Levy 1/2¢.....	\$34,105.57	\$.....	\$34,105.57
Tax Levy 6/10¢.....	.....	21,434.19	21,434.19
Total .....	\$34,105.57	\$21,434.19	\$55,539.76
Total Available .....	\$63,640.57	\$21,434.19	\$85,074.76
DISBURSEMENTS:			
Bond Principal Paid.....	\$20,000.00	\$10,000.00	\$30,000.00
Bond Interest Paid.....	7,500.00	9,452.50	16,952.50
Total Disbursements .....	\$27,500.00	\$19,452.50	\$46,952.50
Balance—April 30, 1956.....	\$36,140.57	\$ 1,981.69	\$38,122.26

## SUMMARY OF BALANCES

FUNDS:	Montgomery County	Prince Georges County	Total
Administration Fund .....	\$ 7,614.89	\$ 6.83	\$ 7,621.72
Park Fund—General .....	58.24	1,168.98	1,227.22
Park Fund—Special Acquisition and Development.....	1,258.52	97,947.39	99,205.91
Park Fund—Capper-Cramton Account.....	154,849.24	286,881.62	441,730.86
Bond Debt Service Accounts.....	36,140.57	1,981.69	38,122.26
Total Fund Balances.....	\$199,921.46	\$387,986.51	\$587,907.97
Employees Taxes Withheld.....	3,975.64	2,072.72	6,048.36
Employees Contribution to Retirement Fund.....	1,115.37	662.07	1,777.44
Total .....	\$205,012.47	\$390,721.30	\$595,733.77
ON DEPOSIT IN THE FOLLOWING BANKS:			
Regular Accounts:			
Kensington Bank .....	\$ 24,542.24	\$.....	\$ 24,542.24
Bank of Silver Spring.....	18,195.95	.....	18,195.95
Suburban Trust Company.....	23,904.71	38,614.64	62,519.35
Bank of Bethesda.....	23,205.44	.....	23,205.44
Citizens Bank of Takoma Park.....	15,089.13	.....	15,089.13
<sup>(a)</sup> Clinton Bank .....	.....	10,000.00	10,000.00
Bank of Maryland.....	.....	25,810.82	25,810.82
Citizens Bank of Maryland.....	.....	26,095.84	26,095.84
Time Deposits:			
Citizens Bank of Takoma Park.....	100,000.00	.....	100,000.00
Suburban Trust Company.....	.....	40,000.00	40,000.00
Citizens Bank of Maryland.....	.....	250,000.00	250,000.00
Total Deposits .....	\$204,937.47	\$390,521.30	\$595,458.77
Petty Cash .....	75.00	200.00	275.00
Total to be Accounted For.....	\$205,012.47	\$390,721.30	\$595,733.77

(a) Deposit not covered by collateral but protected by Federal Deposit Insurance. All other deposits are secured by United States Government bonds under escrow agreements.



**SCHEDULE OF LAND PURCHASES  
MONTGOMERY COUNTY**

**7¢ PARK FUND:**

Advance of part purchase of land for Office Building—Pollin Tract.....	\$22,105.00
Tract for Takoma Park Recreation Center.....	156.58

Total Park Fund—General.....		\$ 22,261.58
------------------------------	--	--------------

**SPECIAL ACQUISITION AND DEVELOPMENT FUND:**

Advance of part purchase price of land for Office Building—Pollin Tract.....	\$30,000.00
Parcel 11, Proposed Sligo Creek Park, Unit #6.....	400.00
Greathouse Tract, Sligo Park Hills.....	400.00
Montgomery County Tract adjoining Rock Creek Park, Unit #3.....	4,500
Davis Property, North Kensington Recreation Center.....	33,402.00
Martin Property—Parcel 22, Proposed Northwest Branch Park, Unit #4.....	3,812.80
Wilkins Property, Proposed Cabin John Park, Unit #2.....	8,345.00
Roberts Property, Part Sangamore Recreation Center.....	5,150.00
Tauber & Levin Property—Proposed Connecticut Avenue Park Recreation Center.....	40,000.00
Paragon Construction Co. Property—Proposed Northwest Branch Park, Unit #3, Parcel 10.....	6,810.75

Total—Special Acquisition and Development Fund.....		132,820.55
---	--	------------

**CAPPER-CRAMTON FUNDS:**

Adams Property, Parcel 7g, Little Falls Branch Park, Unit #2.....		5,250.00
---	--	----------

Total Montgomery County.....		\$160,332.13
------------------------------	--	--------------

**PRINCE GEORGES COUNTY**

**SPECIAL ACQUISITION AND DEVELOPMENT FUND:**

Paragon Construction Co. Tract, adjacent Northwest Branch Park, Unit #1.....		\$ 15,000.00
--	--	--------------

**CAPPER-CRAMTON FUNDS:**

Williams Property, Anacostia River Park, Unit #1.....	\$ 200.00
Harbaugh Property, Parcel 45, Sligo Creek Park, Unit #5.....	650.00
Theis Property, Parcel 95, Paint Branch Park, Unit #1.....	1,518.00
Eckenrode Property, Parcel 96, Paint Branch Park, Unit #1.....	1,524.00
St. Clair Property, Parcels 16, 17 & 18, Northwest Branch Park, Unit #1.....	1,522.60
Chaney Tract, Part Parcel 50, Sligo Creek Park, Unit #5.....	560.00
Carson & Haas Property, Parcel 8, Sligo Creek Park, Unit #5.....	5,371.00
Kraus Property, Parcel 39, part 40, Northwest Branch Park, Unit #1.....	3,789.60
Bauman Property, Parcel 15, Northwest Branch Park, Unit #1.....	457.50

Total Capper-Cramton Funds.....		15,592.70
---------------------------------	--	-----------

Total Prince Georges County.....		\$ 30,592.70
----------------------------------	--	--------------

Total Both Counties.....		\$190,924.83
--------------------------	--	--------------

We have compiled the above Statement of Cash Receipts and Disbursements for the fiscal year May 1, 1955 to April 30, 1956, both dates inclusive, from our audit reports dated December 20, 1955 and May 29, 1956.

Respectfully submitted,

Approved:

JESSE F. NICHOLSON, Secretary-Treasurer  
The Maryland-National Capital Park and Planning Commission

HAROLD S. ROBERTS  
Certified Public Accountant (D.C.)



# COMMISSION PUBLICATIONS

## PARK, PLANNING, LEGAL AND FINANCIAL PUBLICATIONS AVAILABLE WITHOUT COST

1. Master Plan of Schools, Parks and Recreation. 1956.
2. Annual Report, August, 1956. 52 pp., maps, charts.
3. Your Parks and Recreation Centers. May, 1956. 32 pp., maps.
4. Regulations for the subdivision of land in the Maryland-Washington Regional District.
5. Annual Budgets.
6. Financial Reports
7. Bond Maturity Schedules.
8. Enabling Acts.  
Maryland-Washington Regional District Act (as amended to May 1, 1954).  
Maryland-Washington Metropolitan District Act (as amended to May 1, 1954).

## MAPS AND PLANS AVAILABLE FOR FREE PUBLIC DISTRIBUTION:

9. Silver Spring-Takoma Park Street Map. Scale: 1 inch equals 800 feet.
10. Bethesda-Chevy Chase Street Map. Scale: 1 inch equals 800 ft.
11. Kensington-Wheaton Street Map. Scale: 1 inch equals 800 ft.
12. Potomac Street Map: 1 in. equals 800 ft.
13. Colesville-Norbeck Street Map: 1 in. equals 800 ft.
14. Burtonsville-Fairland Street Map: 1 in. equals 800 ft.
15. Prince Georges County Street Map—1954. Scale of 1:24,000.
16. Zoning Plan for the Bethesda Business District and Vicinity, 1956. Scale: 1 in. equals 300 ft.
17. Master Plan of Streets and Highways for Montgomery Hills-Woodside area, 1948. Scale: 1 in. equals 200 ft.
18. Master Plan of Highways Map, 1955, for Md. Wash. Regional District. 4 colors. Scale: Approx. 1 in. equals 1 mi.
19. Master Plan of Streets and Highways for the Central Business District of Silver Spring, 1948. Scale: 1 in. equals 200 ft.
20. Master Plan of Streets and Highways for the Bethesda Business District and Vicinity, 1956. Scale: 1 in. equals 300 ft.
21. Zoning Plan for Georgia Ave.-Brookeville Road, Part I, Silver Spring to Aspen Hill, 1948. Scale: 1 in. equals 400 ft.
22. Zoning Plan for Georgia Ave.-Brookville Road, Part II, Manor Park to Brookeville, 1948. Scale: 1 in. equals 400 ft.
23. Highway Plan for Viers Mill Road, 1948. Scale: 1 in. equals 400 ft.
24. Zoning Plan for Viers Mill Road, 1948. Scale: 1 in. equals 400 ft.
25. Zoning Plan for Town of Kensington and Vicinity, 1955. Scale: 1 in. equals 400 ft.
26. Master Plan of Streets and Highways for the Town of Kensington and Vicinity. 1954. Scale: 1 in. equals 200 ft.
27. Zoning Plan for Rockville Pike, Bethesda to Rockville, 1947. Scale: 1 in. equals 400 ft.
28. Zoning Plan for Wheaton, 1951. Scale: 1 in. equals 200 ft.
29. Highway Plan for Wheaton, 1951. Scale: 1 in. equals 200 ft.
30. Zoning Plan for Colesville Road, Part I, Silver Spring to Bonifant Road, 1948. Scale: 1 in. equals 400 ft.
31. Zoning Plan for Colesville Road, Part II, Briggs-Chaney to Brighton, 1948. Scale: 1 in. equals 400 ft.
32. Zoning Plan for Takoma Park, 1952. Scale: 1 in. equals 400 ft.
33. Zoning, Street and Highway Plan for Rosemary Hills-Lyttonsville Area, 1952. Scale: 1 in. equals 400 ft.
34. Zoning Plan for Central Business District of Silver Spring, 1947. Scale: 1 in. equals 400 ft.



2709 Nicholson St.  
Hyattsville, Md.  
October 5, 1955

Mr. Percé L. Wolfe  
Director of Parks  
Maryland-National Capital  
Park and Planning Commission  
Riverdale, Maryland

Dear Mr. Wolfe.

I wish to thank you and the Park and Planning Commission for your splendid cooperation during our first summer recreational program held in the park adjacent to the Kirkwood Apartments. I am writing on behalf of the over 200 children in the area who attended the playground as well as our Area Recreation Council.

We feel that your response in supplying the extra picnic benches, the "safety" signs as well as the much needed playground equipment in the park did much to help our program be such a success.

It is noted that at the present time a new foot bridge is being built over the creek. This is much appreciated and it is our hope that perhaps by next summer it will be possible for there to be a fountain or other facility for obtaining water in the park area.

We have been pleased to note the bigger and better picnic and recreational areas which have been made available to area communities by the Park and Planning Commission.

Sincerely,

*Marjorie S. Hall*  
(Mrs) Marjorie S. Hall, President  
Kirkwood Area Recreation Council

COPY

11008 Madison Street  
Kensington, Maryland

April 7, 1956

Montgomery County Delegation  
House of Delegates  
Annapolis, Maryland

Gentlemen:

The North Kensington Citizens Association at its last meeting on March 27, 1956, overwhelmingly approved the following resolution:

WHEREAS, we residents of Montgomery County are appreciative of the difficult task so ably performed by the Maryland-National Capital Park and Planning Commission and are cognizant of the planning care and wisdom with which they spend the tax monies we grant them, and

WHEREAS, in common with the other residents of the county, we are requesting extension of the community park program, adoption of the proposed Master Plan of Schools, Parks and Recreation, and the acquisition of lands for a county regional park system,

BE IT RESOLVED that the park tax be increased to 10¢ per \$100 evaluation to provide these facilities and that the boundaries of the Park and Planning Commission's authority be extended to include the whole of Montgomery County.

The North Kensington Citizens Association wishes to call to your attention the numerous errors in planning, indeed the very lack of planning, that preceded the creation of the Advance Planning Section by the Park and Planning Commission. To forestall this chaotic condition in the upper county, it would appear prudent to place the whole county under a unified planning system. The Maryland-National Capital Park and Planning Commission is apparently prepared to take over this important job and in so doing gain the lands for a Regional Park System. This change should be made before the current highway plans are completed and property values in the upper county rise.

Sincerely yours,

cc: Montgomery County  
Council  
Sidney Oliver,  
MSRCP

NORTH KENSINGTON CITIZENS ASSOCIATION  
S/ S. Chernick  
Sidney S. Chernick, President

LEAGUE OF WOMEN VOTERS  
OF MONTGOMERY COUNTY  
637 PERSHING DRIVE  
SILVER SPRING, MARYLAND

JULY 28-1950

March 15, 1956

Dear Mr. Oliver,

Thank you for your letter of February 23rd in which you offer the services of a representative from the Commission to discuss the proposed Master Plan of Parks, Recreation and Schools before a League group. An unusually heavy schedule of meetings for the next two months makes it impossible for us to schedule a meeting on the Master Plan. However, a number of our members will attend the meeting of the Planning Association next month, when, we understand, you will be a member of a panel discussing the Plan.

The League would like to commend the Commission for the steps it is taking to keep the public informed as to what it is doing.

Sincerely,

*Elizabeth Rohr*  
Mrs. Elizabeth Rohr  
President

Mr. Sidney M. Oliver  
Vice-Chairman and Park Commissioner  
The Maryland-National Capital Park and Planning Com.  
8500 Colesville Road  
Silver Spring, Maryland

10015 Portland Place  
Silver Spring, Maryland  
May 1, 1956

Maryland-National Capital  
Park and Planning Commission  
4811 Riverdale Road  
Riverdale, Maryland

Gentlemen:

The members of the Institute of Maryland Public Affairs group wish to express their appreciation for the excellent tour of Prince George's and Montgomery Counties' recreational centers which you provided for our benefit on February 4.

Your representative, Mr. Zatman, gave us a most illuminating and graphic picture of the present existing conditions and an excellent resume of the plans for the future of these two counties along recreatory lines. Furthermore, this tour gave us an insight and a better understanding of your problems as they affect the people and the communities in this area. It made us conscious of the additional role we play by being on the periphery of our nation's capital.

We would like to give special commendation to Mr. Zatman for his patient and untiring efforts on our behalf.

Sincerely yours,

*Ina W. Shields*  
Ina W. Shields



March 5, 1956

The Honorable Carl Hayden  
Chairman  
Senate Appropriations Committee  
Senate Office Building  
Washington 25, D.C.

Dear Sir:

The Montgomery County Planning Association is a non-partisan citizens group interested in all aspects of planning which affect Montgomery County. One of our primary concerns is the development of an adequate system of well planned parks and playgrounds.

For this reason, the Board of Directors of this Association has directed me to write to you, urging that the Senate Appropriations Subcommittee approve the full appropriation of \$ 343,000 as requested by the Maryland National Capital Park and Planning Commission for Park Acquisition under Section 1(b) Pepper-Creston Act.

The pressures of residential and commercial development, encouraged by the installation of sanitary sewers in the stream valleys, are endangering the continuity of the stream valley parks as originally planned. These pressures are also rapidly increasing the cost of land acquisition. There is, therefore, urgent need of accelerating the Commission's program of land acquisition.

We believe that the Commission's program is the minimum that should be undertaken, and we again respectfully urge the approval of the full amount of the Appropriation as requested.

Respectfully yours,

ARTHUR J. KELSY  
President  
Montgomery County Planning Association

AJK:hfk

Ki-Wives  
OF PRINCE GEORGE'S COUNTY, MARYLAND

2 May, 1956.

Md. National Capital  
Park & Planning Commission,  
Baltimore, Md.

Dear Mr. Welf,

The Ki-Wives are grateful to you for your attention to our request for permission to use Adrephi Mill for our picnic on April 26.

The excellent facilities available for our use, the cleanliness and the attractive surroundings contributed substantially to our enjoyment of the outing. We do thank you for providing such an excellent location for public use.

Yours truly,

Harriet Brooks  
Corresponding Secretary

CIVIC LEAGUE OF  
BROOKMONT, MARYLAND  
AND VICINITY, INC.

April 18, 1956

Glassmanor Citizen's Association  
344 Maury Avenue  
Oxon Hill, Maryland

17 April 1956

Maryland-National Capital  
Park and Planning Commission  
4511 Riverdale Road  
Riverdale, Maryland

Sirs:

The Glassmanor Citizen's Association wishes to compliment the Maryland-National Capital Park and Planning Commission on the preliminary master plan of schools, parks, and recreation. The proposed facilities for the southern end of Prince George's County are a forward step in the improvement of the civic community. It is hoped that these proposals will be carried to fruition.

The rapid growth of the southern part of the county adjacent to the District of Columbia and the expected growth following the building of the outer belt highway and Jones Point bridge indicates the need for sound planning and development of schools, parks, and recreational facilities now. Land for park and school development should be purchased in areas that extend beyond the Metropolitan boundary which is located several miles north and east of the Glassmanor area.

In particular, the Glassmanor Citizen's Association wants to endorse the proposed combined school-park site to be located in or near Glassmanor, and the youth center proposed to be located across Indian Head Highway from Glassmanor.

Sincerely yours,

Eugene A. Confrey  
Eugene A. Confrey  
President  
Glassmanor Citizen's Association

Maryland-National Capital Park  
and Planning Commission  
8500 Colesville Road  
Silver Spring, Md.

Gentlemen:

The Civic League of Brookmont, Maryland, and vicinity has given careful attention to the preliminary Master Plan developed by your Commission for the long-term projects of park, playground, and school areas and for their orderly development during the coming years. We have also had the benefit of the excellent discussion of this Plan presented to our Civic League recently by Mr. Oliver, Mr. Hewitt, and Mr. Eisman of your Commission.

This is to advise you that our League is in hearty support of your proposals, specifically as they relate to our area, and in general as they affect the entire area covered by the Plan. We feel that it is absolutely necessary, if Montgomery County is to develop in an orderly manner and to continue to be the attractive area for living and working which it now is, that some such long-range program be adopted and put into effect at the earliest possible time. Further delays can result only in increased cost to the taxpayer because of rising land values.

We recognize that such a Plan necessarily requires substantial sums of money at an early date. We are in support of such measures as your Commission may find appropriate for the raising of such funds.

Sincerely yours

Donn N. Bent  
Donn N. Bent  
President  
6302 Ridge Drive, Wash. 16, D. C.



WALTER F. MULLIGAN, ASSISTANT  
COLLEGE PARK

JAYWIS D. PALMER, 1ST VICE PRESIDENT  
LANDOVER

ERNEST L. PEASE, 2ND VICE PRESIDENT  
PREGO

FRANK W. SAUL, TREASURER  
ROCKVILLE

MRS. PHYLIS HARRIS, SEC. SECT.  
ROCKLEDGE

MRS. CHARLNE V. DONNELLY, CORRESP. SECT.  
BLADENBURG

PRINCE GEORGE'S COUNTY  
CIVIC FEDERATION, INC.

DIRECTOR  
DAVID M. SHINE  
ARNDTDALE

MRS. PAUL E. CHRISTOPHER  
BLADENBURG

MRS. IRMA BOGDANSKY  
BANDWAGEN HILLS

Maryland National Park & Planning Commission  
4811 Riverdale Road  
Riverdale, Maryland

Gen.lemen:

At the last meeting of the Prince George's County Civic Federation, Inc., the following resolution was passed:

"To thank the Park & Planning Commission for its action in enlarging the amount of money in the budget for the improvement of playgrounds and recreation areas in the county."

Sincerely,

*Caroline Donnelly*

1957 *envelope name*  
Wed. 27, W.C.

MNCPPC

AUTHOR

ANNUAL REPORT -- 1955-56

TITLE

29th Annual report

THE MONTGOMERY JUNIOR COLLEGE

CONDUCTED BY THE MONTGOMERY COUNTY BOARD OF EDUCATION

TAKOMA PARK 12, MARYLAND

TELEPHONE: JUNIPER 8-3070

May 23, 1956

Mr. Sidney Oliver  
Vice-Chairman  
Maryland National Capitol Park and  
Planning Commission  
8500 Colesville Road  
Silver Spring, Maryland.

Dear Mr. Oliver:

I wish to thank you and your Commission for the use of your facilities, so graciously extended to the College, for our inter-collegiate athletic program this spring.

Mr. Jack Hewitt and Mr. Sam Mumford cooperated fully in putting the baseball field at Takoma Park and the tennis courts at Jessup Blair Park, in superb condition for our varsity teams. Mrs. Levin and her assistant were most helpful to me in obtaining reservations for those areas.

The College appreciates this assistance by you, and we thank you again for the continued cooperation.

Sincerely,

*F. Frank Rubini*

F. Frank Rubini  
Director of Athletics

KENWOOD CITIZENSHIP  
KENNEDY  
CHEVY CHASE

Mr. Sidney M. Oliver, Vice  
Maryland National Capital Park  
8500 Colesville Road  
Silver Spring, Maryland

Dear Mr. Oliver:

It was with interest and  
community noted recently that  
Little Falls Branch Park was  
road and the recreational  
results that have been attained.

The spirit of friendship  
which we have encountered  
been highly appreciated.  
recommendations have enabled  
in this matter. It is our hope that we can  
by your counsel.

Please accept our thanks for your interest and  
assurances of our desire to perpetuate our cordial relation.

Very sincerely yours,

*K. Corley*  
Karl C. Corley, M. D.,  
President

kcc/cc

JUNIPER 8-3311

MALONEY'S, INC.

8126 Georgia Avenue  
SILVER SPRING, MARYLAND

FULL LINE OF HARDWARE AND SUPPLIES  
McCORMICK TRACTORS AND EQUIPMENT • INTERNATIONAL TRUCKS

December 30, 1955

National Capital Park & Planning Commission  
8500 Colesville Road  
Silver Spring, Maryland

So, first of all, congratulate you and the Park and Planning Commission for the splendid job you are doing with our parks and to particularly thank you for the community Christmas display on Sligo Creek Colesville Road. Our children have particularly enjoyed the display and the Reindeer.

We want you to know that we appreciate the fine job that you and your entire force are doing. Thanking you, I am

Yours very truly,

MALONEY'S, INC.

*Lawrence B. Maloney, Jr.*  
Lawrence B. Maloney, Jr.  
President

L29/bh  
cc: Mr. Mumford



