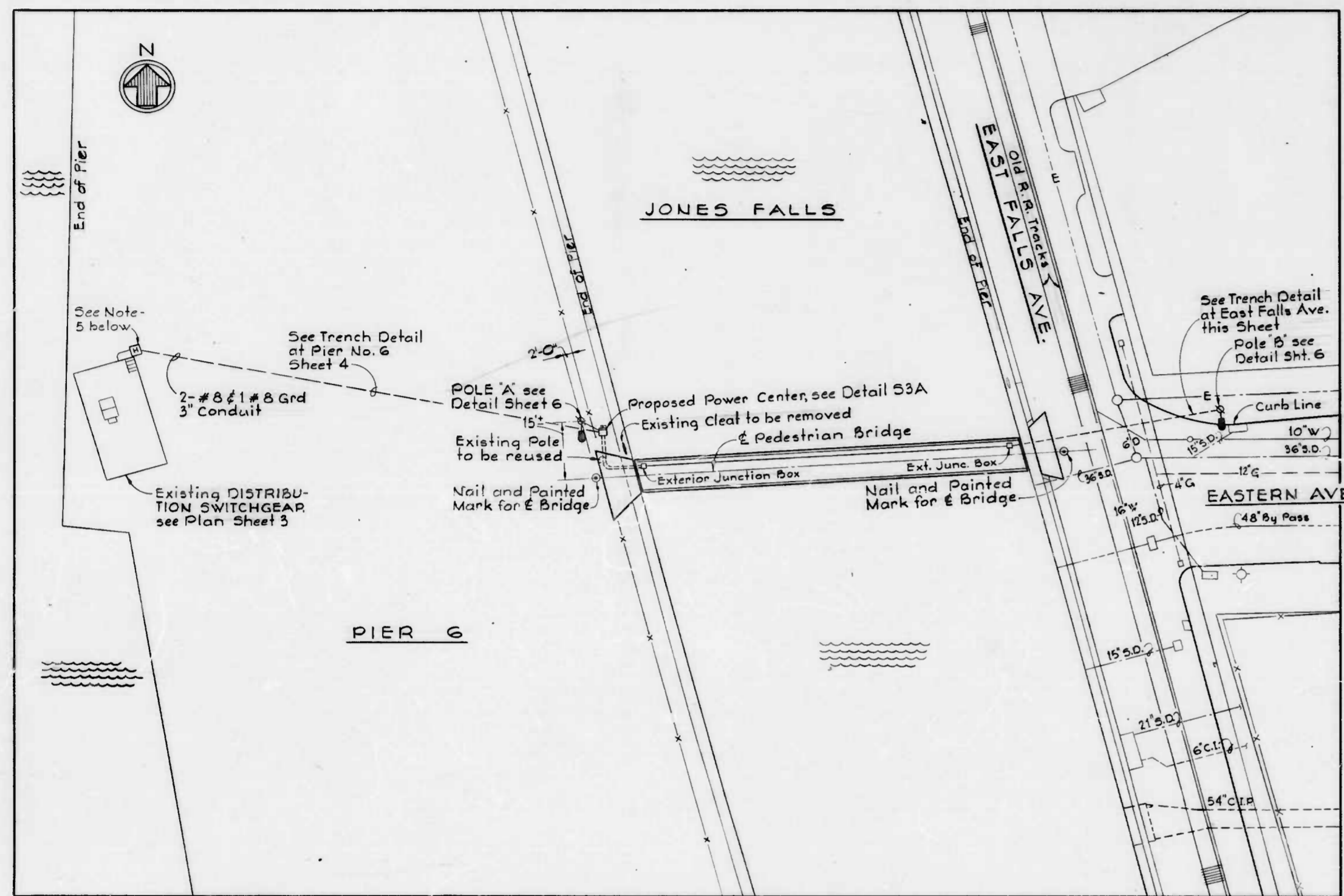


FILE REF



LOCATION PLAN

SCALE: 1" = 20'

NOTES

- EXISTING TOPOGRAPHY, ELEVATIONS AND UTILITIES ARE BASED ON "PLAT SHOWING THE PHYSICAL OUTLINE TOPOGRAPHY AND UTILITIES OF PIER 6 LOCATED ON THE SOUTH SIDE OF PRATT STREET" DATED OCTOBER 27, 1977 PREPARED BY THE CITY OF BALTIMORE, DEPARTMENT OF PUBLIC WORKS, BUREAU OF ENGINEERING, SURVEYS AND RECORDS DIVISION.
- THE CONTRACTOR SHALL PROTECT ALL EXISTING BALTIMORE CITY TOPOGRAPHIC TRAVERSE POINTS AND BENCH MARKS UNTIL THE CONSTRUCTION BASELINE AND CONSTRUCTION BENCH MARKS ARE ESTABLISHED AND REFERENCED BY THE CONTRACTOR.
- UNDERGROUND UTILITIES SHOWN ON LOCATION PLAN ARE FOR THE CONVENIENCE OF THE CONTRACTOR AND THERE IS NO WARRANTY OR GUARANTEE OF THE CORRECTNESS OR THE COMPLETENESS OF THE INFORMATION SHOWN. THE CONTRACTOR SHALL VERIFY ALL UTILITY INFORMATION TO HIS OWN SATISFACTION.
- CONTRACTOR SHALL DELIVER WORKING CLEAT REMOVED TO BRIDGE MAINTENANCE STATION AT 803 LANCASTER STREET.
- HANDBOX AND COVER SHALL BE IN ACCORDANCE WITH BALTIMORE CITY DEPARTMENT OF PUBLIC WORKS AND BUREAU OF ENGINEERING STANDARDS NO. BC - 804.D1, MODIFIED AS REQUIRED IN NO. BC - 804.03 THROUGH BC - 804.08.

DRAWN BY: *J.D. Moran*
 EXAMINED BY: *Frank G. Kelly*

W.O. 7761-2A

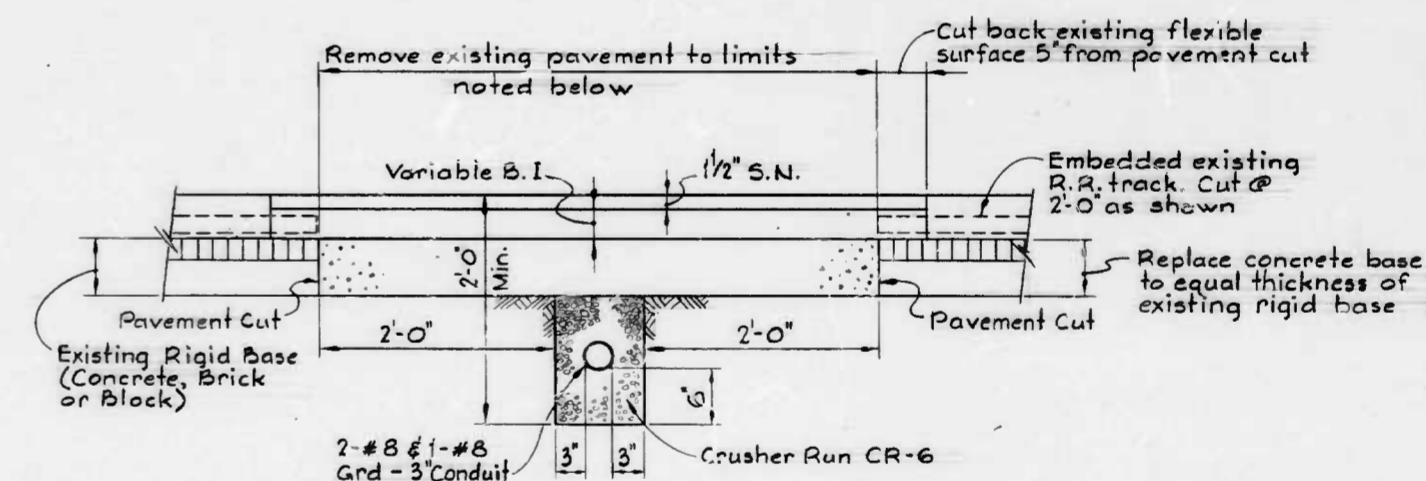
REVISIONS			
NO.	DESCRIPTION	DATE	BY
1	General Revisions	2-8-82	

GENERAL NOTES

- PIERS 3, 4, 5 AND 6 ARE CURRENTLY IN USE FOR PARKING AND OTHER PUBLIC ACTIVITIES. THE CONTRACTOR MUST LIMIT HIS WORK TO THE IMMEDIATE VICINITY OF THE BRIDGE PROPER. NO STORAGE OF EQUIPMENT OR MATERIALS WILL BE ALLOWED EXCEPT IN THE AREA DESIGNATED FOR THE CONTRACTORS USE. THIS AREA IS SOUTH OF FLEET STREET AND EAST OF EAST FALLS AVENUE.
- AREAS DISTURBED BY THIS WORK SHALL BE RESTORED TO A CONDITION EQUAL TO THAT WHICH EXISTED PRIOR TO BEGINNING WORK.
- THE ELEVATIONS SHOWN ON THESE DRAWINGS ARE ALL REFERRED TO MEAN LOW TIDE AS ADOPTED BY THE BALTIMORE SURVEY CONTROL SYSTEM. VERTICAL CONTROL SHALL BE FROM BENCH MARKS 7788 AND 7786.
- BORINGS WITHIN THE AREA OF THIS PROJECT WERE TAKEN IN 1973. COPIES OF THESE WITH THEIR PLAN LOCATION ARE SOUND IN THE SPECIFICATIONS.
- THE CONTRACTOR SHALL ESTABLISH THE CENTERLINE OF BRIDGE AS SHOWN ON LOCATION PLAN.
- THE EDGES OF THE EXISTING PIERS ARE IN VARIOUS STAGES OF DETERIORATION. THE CONTRACTOR IS CAUTIONED THAT HE USES THE PIERS AT HIS OWN RISK.
- CONTRACTOR SHALL EXERCISE EXTREME CAUTION DURING HAND EXCAVATION DUE TO EXISTING UTILITIES BETWEEN THE EDGE OF PIER AND POLE "A".

BRIDGE NOTES

- DESIGN LIVE LOAD = 85 p.s.f.
- THE GENERAL CONDITIONS AND ELEVATIONS OF THE EXISTING PIER EDGES AT THE BRIDGE ENDS ARE SHOWN ON SHEET 3. THE CONTRACTOR SHALL FAMILIARIZE HIMSELF WITH THE EXACT CONDITIONS BY VISITING THE PROJECT SITE.
- WASHERS SHALL BE PROVIDED AT HEAD AND NUT END OF BOLTS. FOR SUPERSTRUCTURE CONNECTIONS USE STANDARD WASHERS AND FOR SUBSTRUCTURE CONNECTIONS USE NEW YORK DOCK WASHERS.
- ALL FERROUS METAL HARDWARE, EXCEPT STAINLESS STEEL, SHALL BE HOT-DIPPED GALVANIZED.
- ALL TIMBER SHALL BE TREATED AS SPECIFIED.
- ALL BOLT HOLES SHALL BE DRILLED PRIOR TO TREATMENT EXCEPT FOR THOSE HOLES SPECIFICALLY NOTED TO BE FIELD DRILLED - (F.D.). ALL FIELD DRILLED HOLES, FIELD CUT TIMBER AND CUT PILES SHALL BE BRUSH COATED WITH PRESERVATIVE TREATMENT AS SPECIFIED. BOLT HOLES SHALL BE TREATED BY MEANS OF AN APPROVED PRESSURE BOLT HOLE TREATER.
- HOLES FOR LAG BOLTS SHALL BE PRE-DRILLED.
- FOR TYPICAL FRAMING, CROSS SECTIONS AND SUPERSTRUCTURE DETAILS, SEE SHEET NO. 4 AND NO. 5.
- BEFORE FABRICATION OF BRIDGE MEMBERS, CONTRACTOR SHALL VERIFY ACROSS-THE-WATER DIMENSION.
- THE CONTRACTOR IS CAUTIONED THAT THE SHALLOW WATER DEPTH AT THE BRIDGE SITE MAY RESTRICT THE USE OF WATERBORNE EQUIPMENT.



TRENCH DETAIL @ EAST FALLS AVE.

No Scale



WHITMAN, REQUARDT & ASSOCIATES
 ENGINEERS
 BALTIMORE, MARYLAND

BY: *C. F. Moran*

CITY OF BALTIMORE
 DEPARTMENT OF PUBLIC WORKS
 BUREAU OF HIGHWAYS

CONTRACT NO. 2675

PEDESTRIAN BRIDGE
 INNER HARBOR EAST
 BRIDGE NO. 4
 LOCATION PLAN

SCALE AS SHOWN

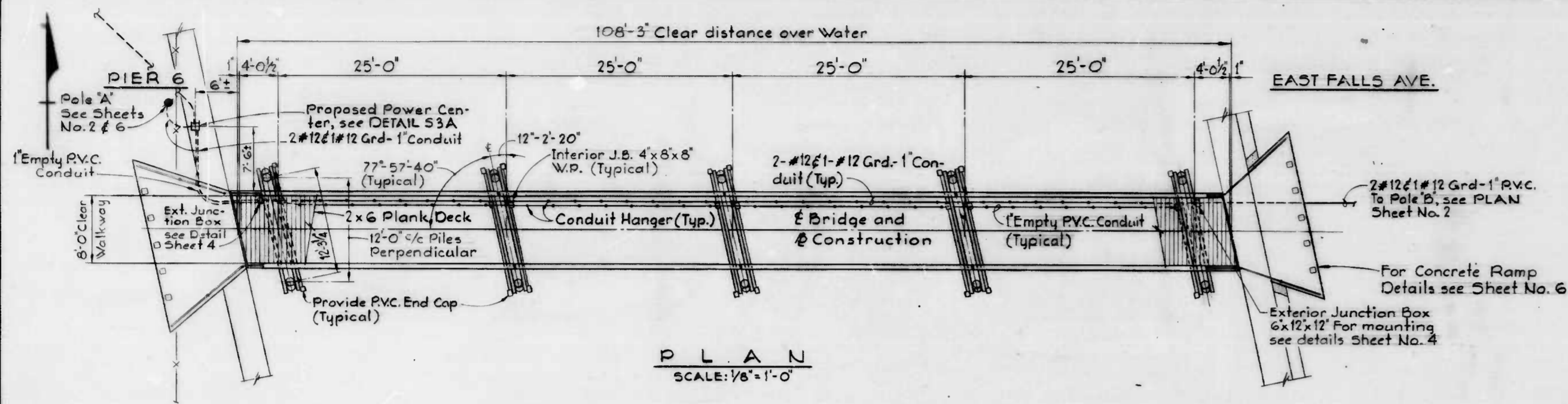
DATE JAN. 27, 1982

SHEET 2 OF 6

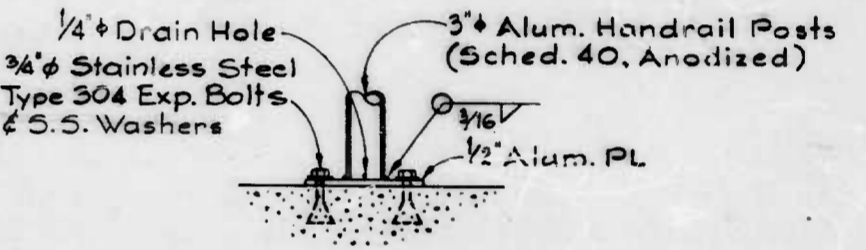
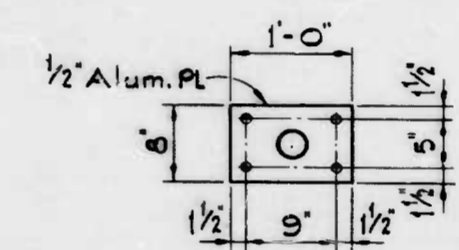
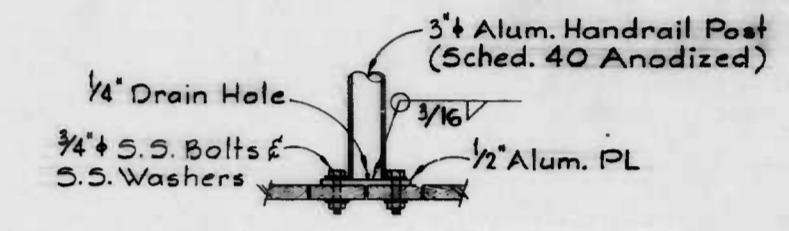
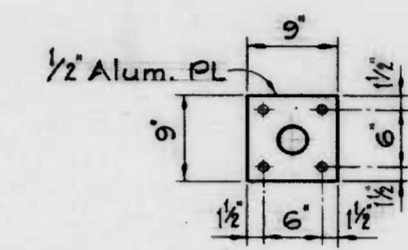
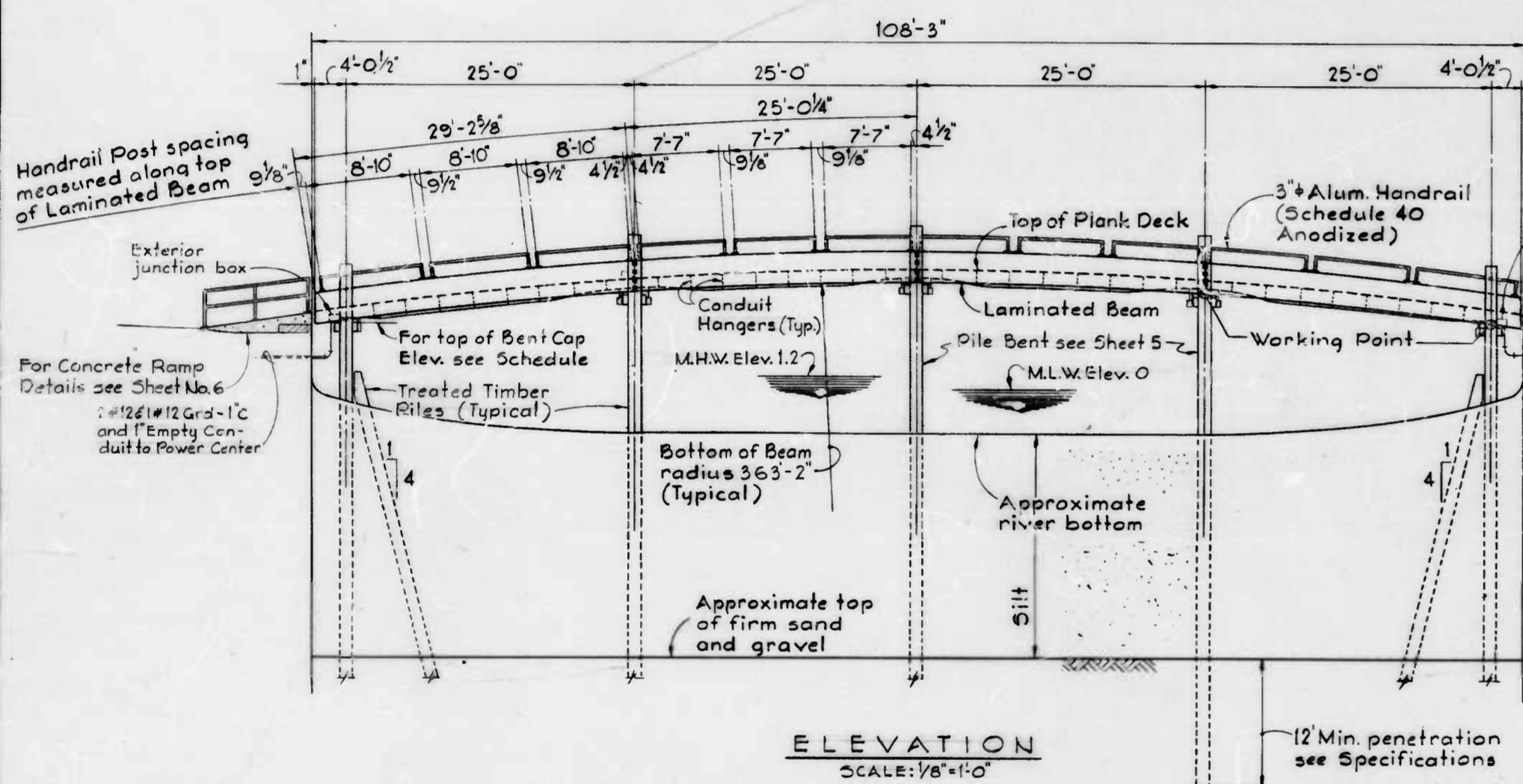
FILE REF.

FILE REF

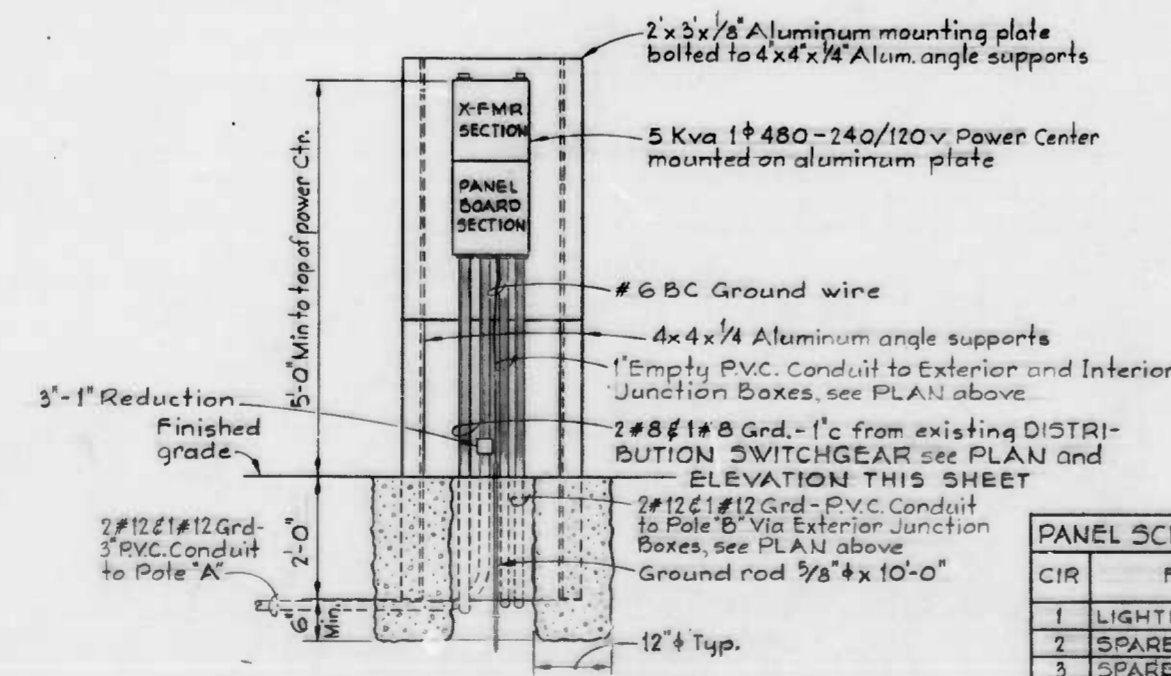
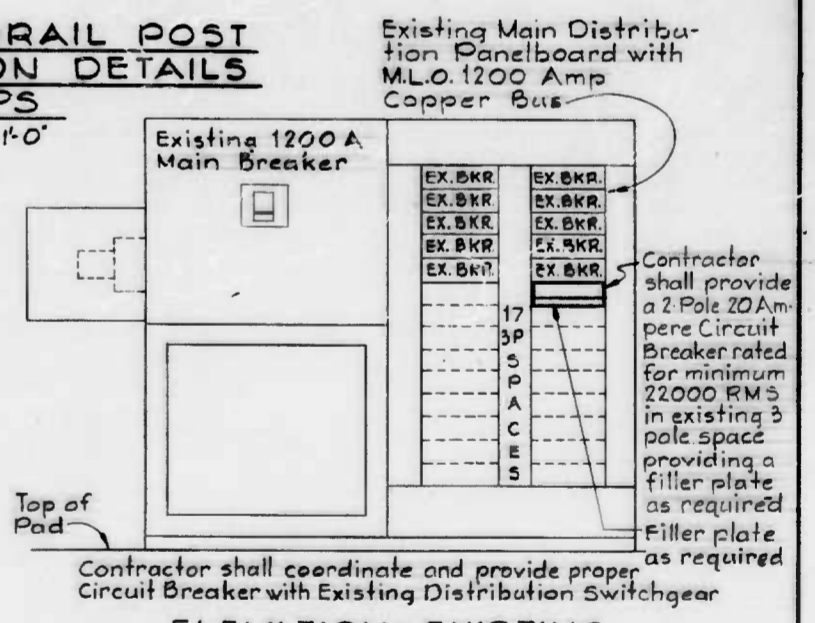
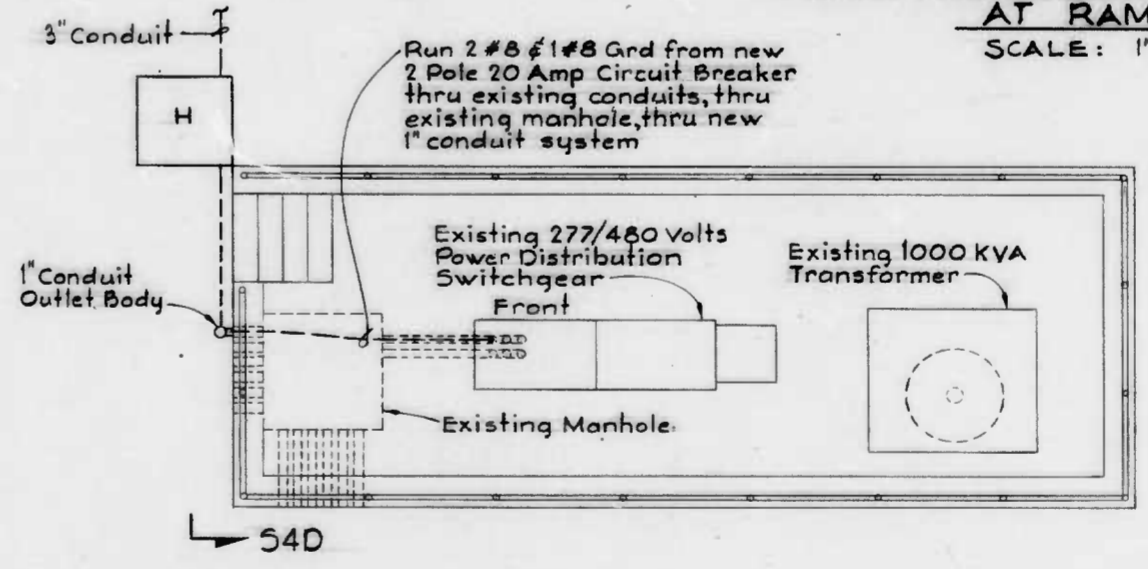
REVISIONS			
NO.	DESCRIPTION	DATE	BY
1	General Revision	2-8-86	



GEOMETRIC SCHEDULE BRIDGE No. 4				
Item	Ends of Bridge	1st Bent 1 & 2	2nd Bent 2 & 4	3rd Bent 3
Top of Plank Deck Elev.	7.33	7.91	10.50	11.36
Working Pt. Elevation		6.76	9.35	10.21
Bevel	1 1/16" : 12"	1 1/16" : 12"	1 1/16" : 12"	0
Top of Bent Cap Elev.	None	6.47	9.14	10.08



ALUMINUM HANDRAIL POST BASE CONNECTION DETAILS AT RAMPS SCALE: 1"=1'-0"



PANEL SCHEDULE 120/240V 1#3W5N			
CIR	FOR	BREAKER FRAME	POLE CALIB
1	LIGHTING	100	1 20
2	SPARE	100	1 20
3	SPARE	100	1 20
4	SPARE	100	1 20

WHITMAN, REQUARDT & ASSOCIATES ENGINEERS BALTIMORE, MARYLAND

BY: Charles F. Millard

CITY OF BALTIMORE DEPARTMENT OF PUBLIC WORKS BUREAU OF HIGHWAYS

CONTRACT NO. 2675

PEDESTRIAN BRIDGE INNER HARBOR EAST BRIDGE NO. 4 PLAN AND ELEVATION

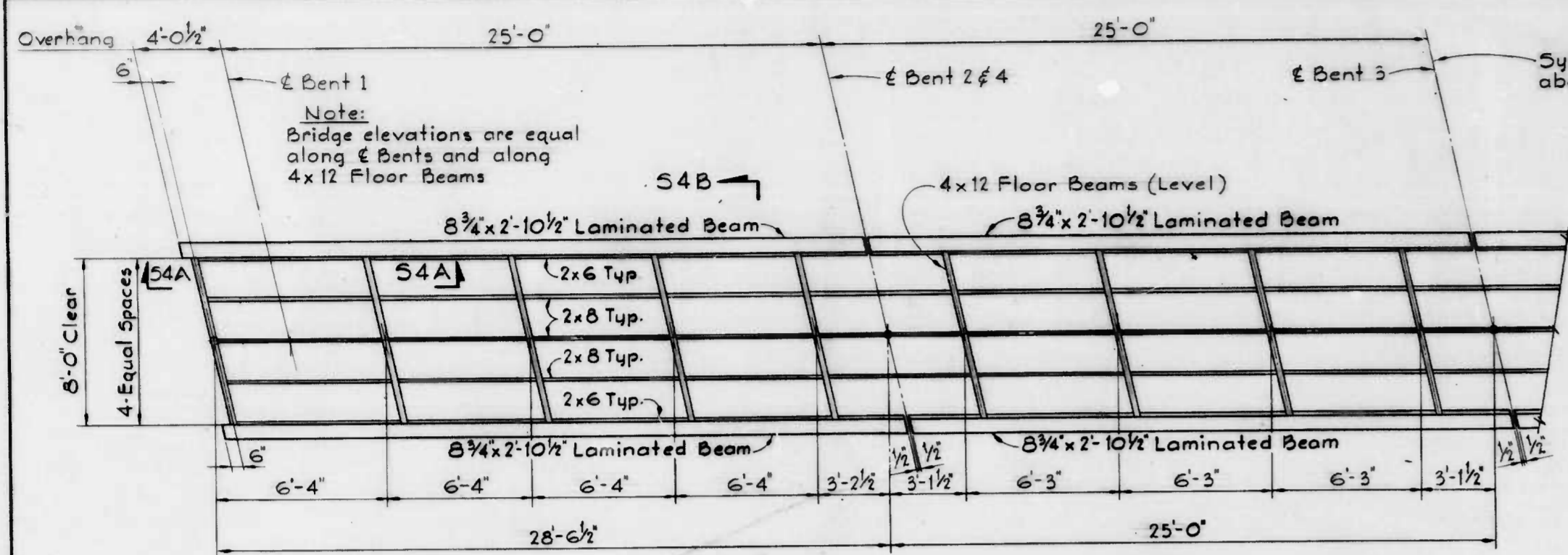
SCALE: AS SHOWN DATE: JAN. 27, 1982 SHEET 37 OF 6

DRAWN BY: J. J. Harty
EXAMINED BY: C. A. Harty

W.O.7761-2A

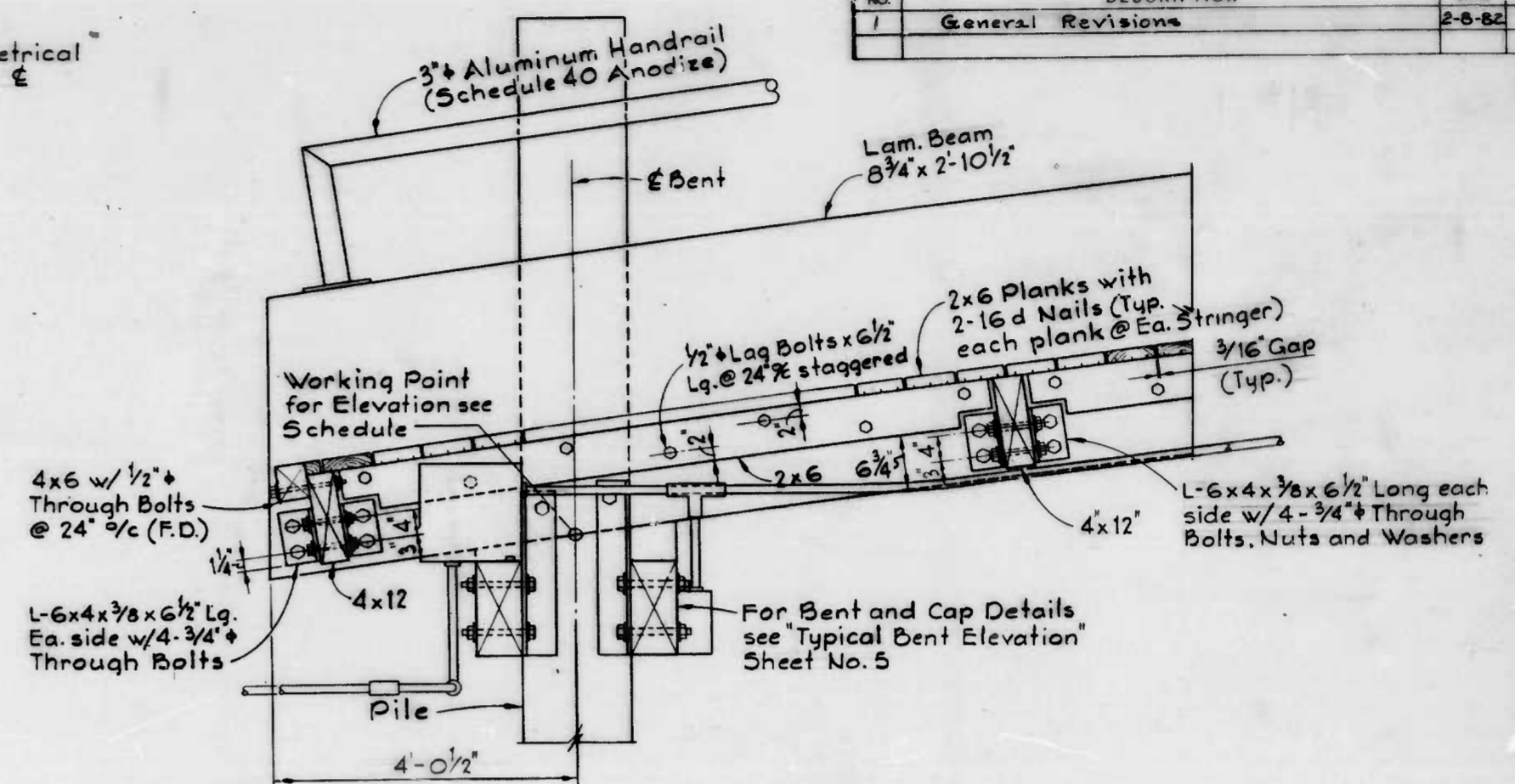
FILE REF.

NO.	DESCRIPTION	DATE	BY
1	General Revisions	2-6-82	

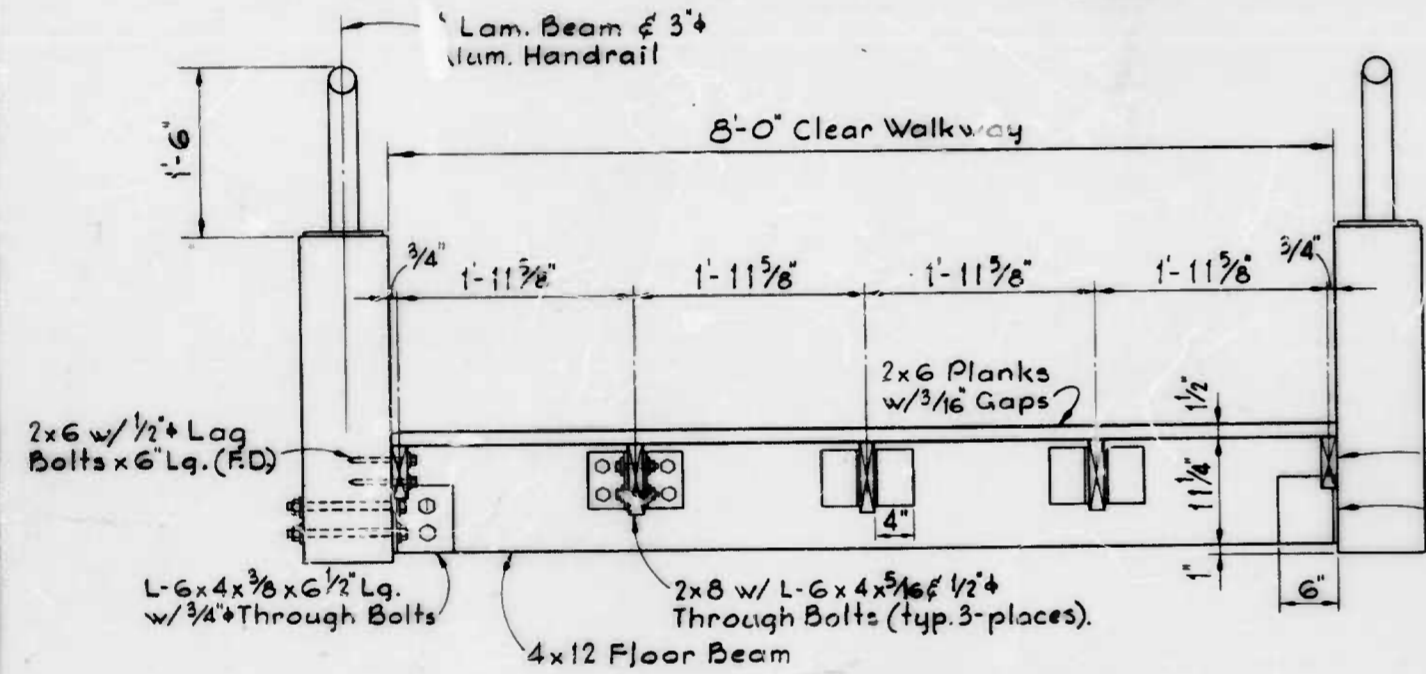


TYPICAL HALF FRAMING PLAN SCALE: 1/4" = 1'-0"

Note: All dimensions are horizontal actual member lengths parallel to C of bridge are slightly longer.



SECTION S4A/S4 SCALE: 1" = 1'-0"

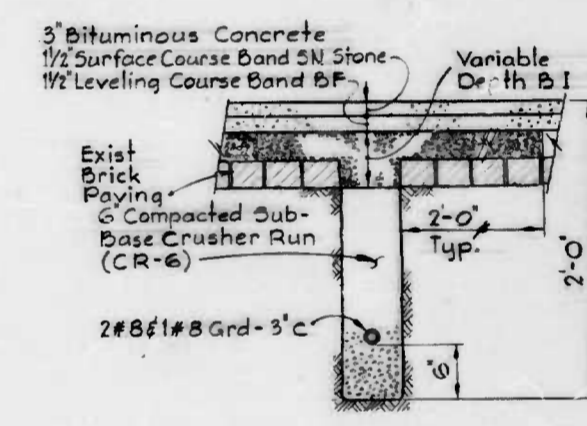


SECTION S4B/S4 SCALE: 1" = 1'-0"

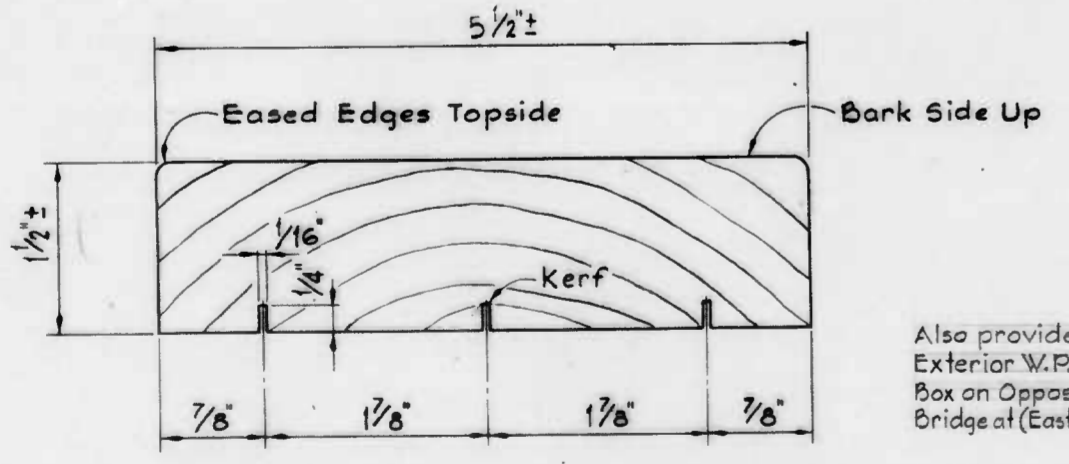
ELEVATION SCALE: 1" = 1'-0"

BRIDGE RAILING DETAILS

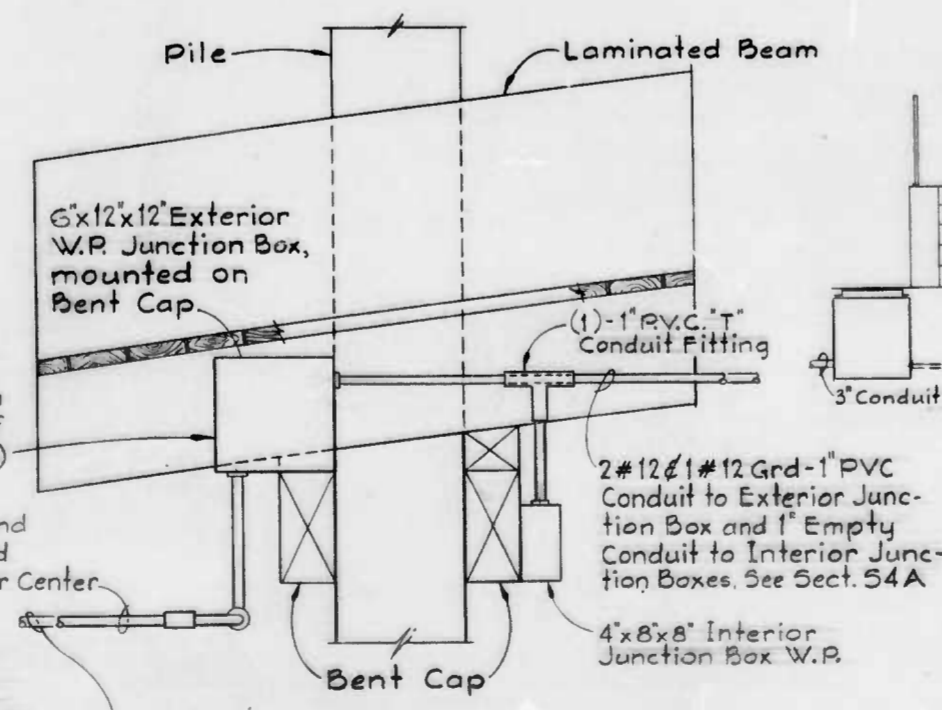
SECTION S4C/S4 SCALE: 1 1/2" = 1'-0"



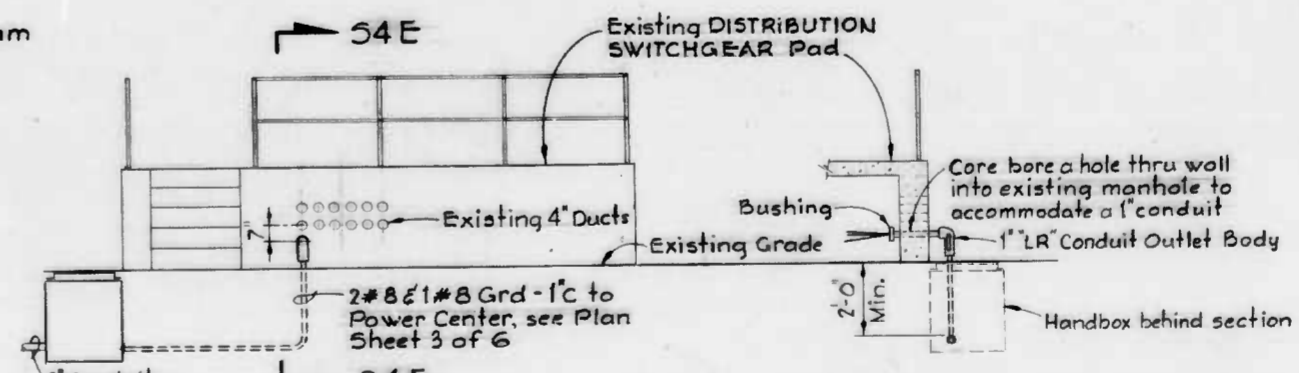
TRENCH DETAIL AT PIER NO. 6 SCALE: 1" = 1'-0"



TYPICAL 2x6 PLANK FULL SIZE



PARTIAL ELEVATION EXTERIOR JUNCTION BOX MOUNTING DETAIL SCALE: 1" = 1'-0"



SECTION S4D/S3 SCALE: 1/4" = 1'-0"

SECTION S4E/S4 SCALE: 1/4" = 1'-0"

DRAWN BY: J.D. Moran
EXAMINED BY: C.P. Long

W.O. 7761-2A

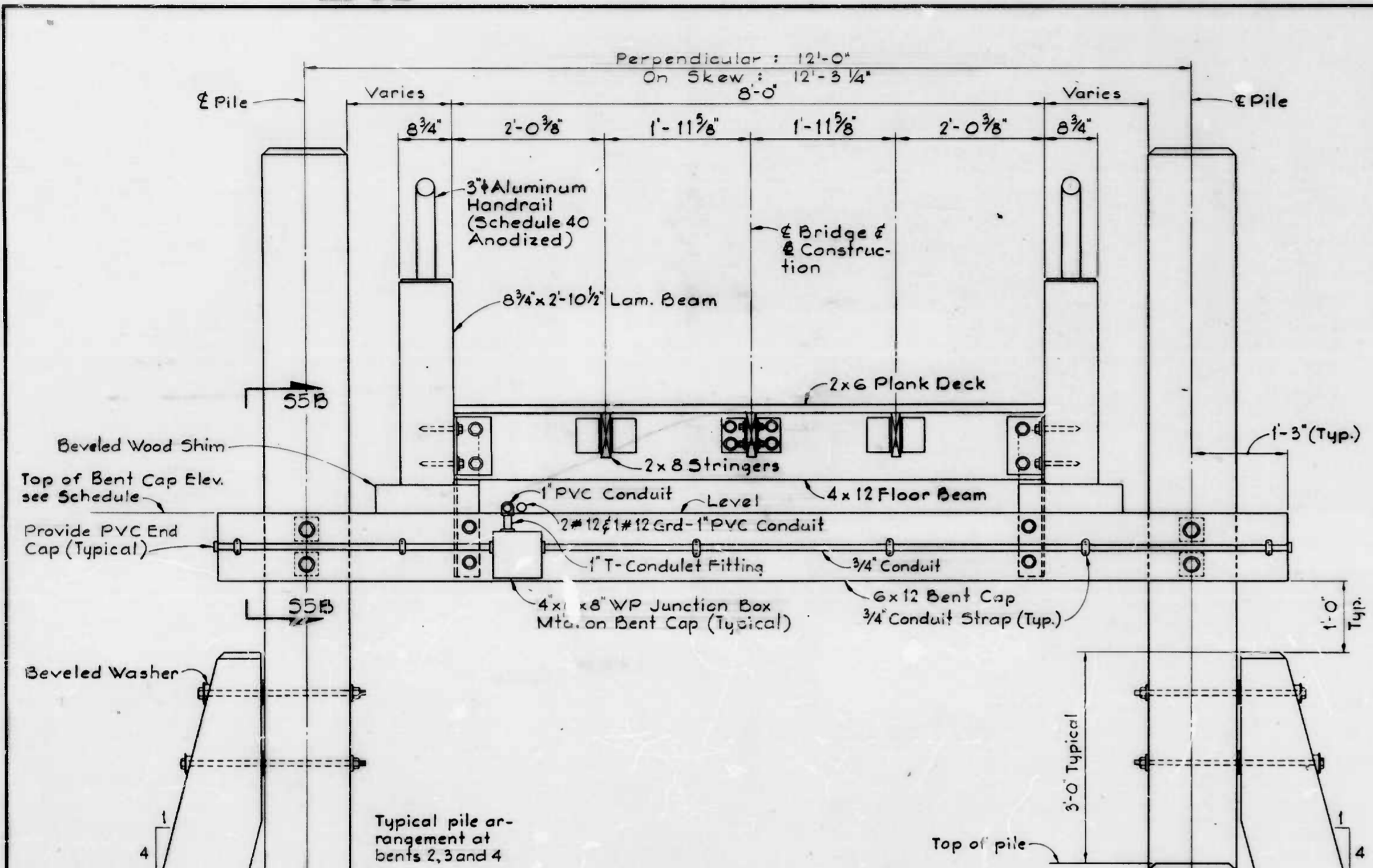
WHITMAN, REQUARD & ASSOCIATES
ENGINEERS
BALTIMORE, MARYLAND
BY: Charles F. Ireland

CITY OF BALTIMORE
DEPARTMENT OF PUBLIC WORKS
BUREAU OF HIGHWAYS
CONTRACT NO. 2675
PEDESTRIAN BRIDGE
INNER HARBOR EAST
SUPERSTRUCTURE
DETAILS
SCALE: AS SHOWN
DATE: JAN. 27, 1982
SHEET 4 OF 6

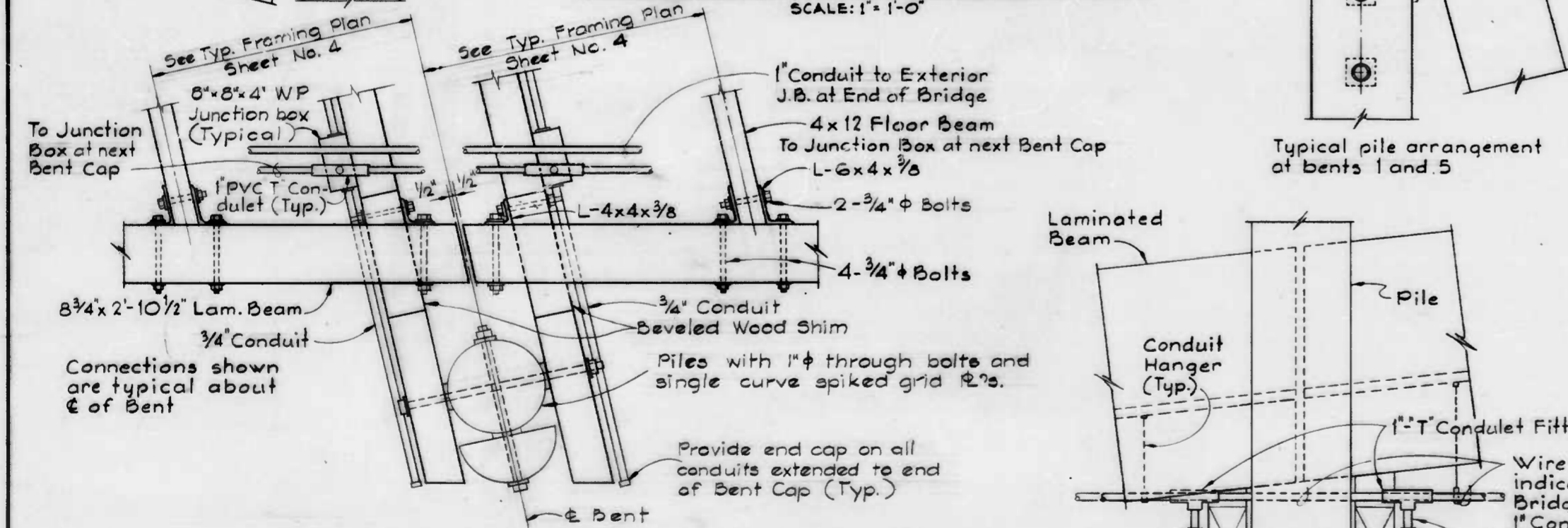
FILE REF.

FILE REF

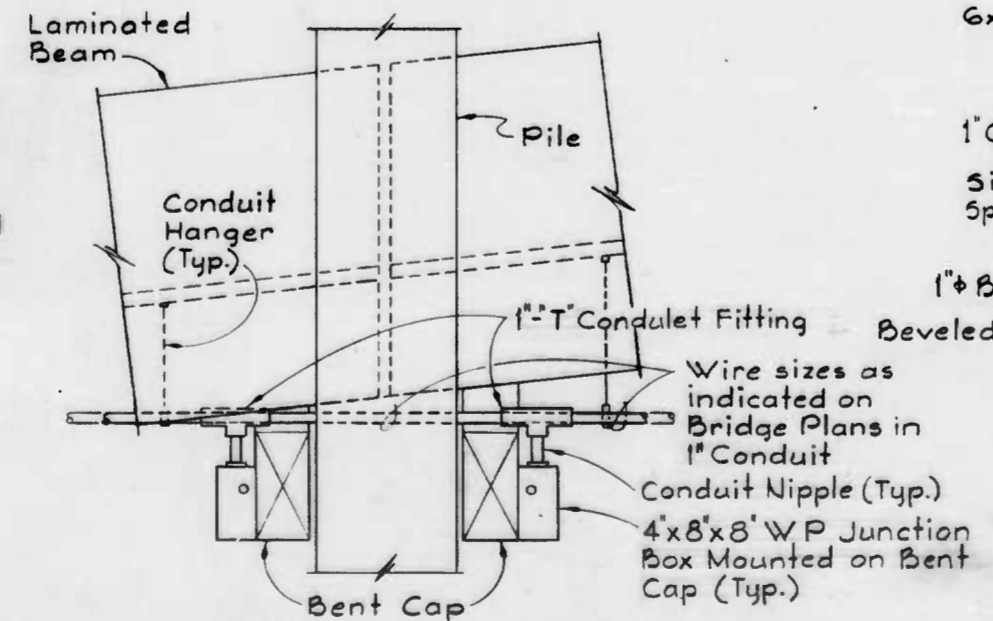
REVISIONS			
NO.	DESCRIPTION	DATE	BY
1	General Revisions	2-8-82	



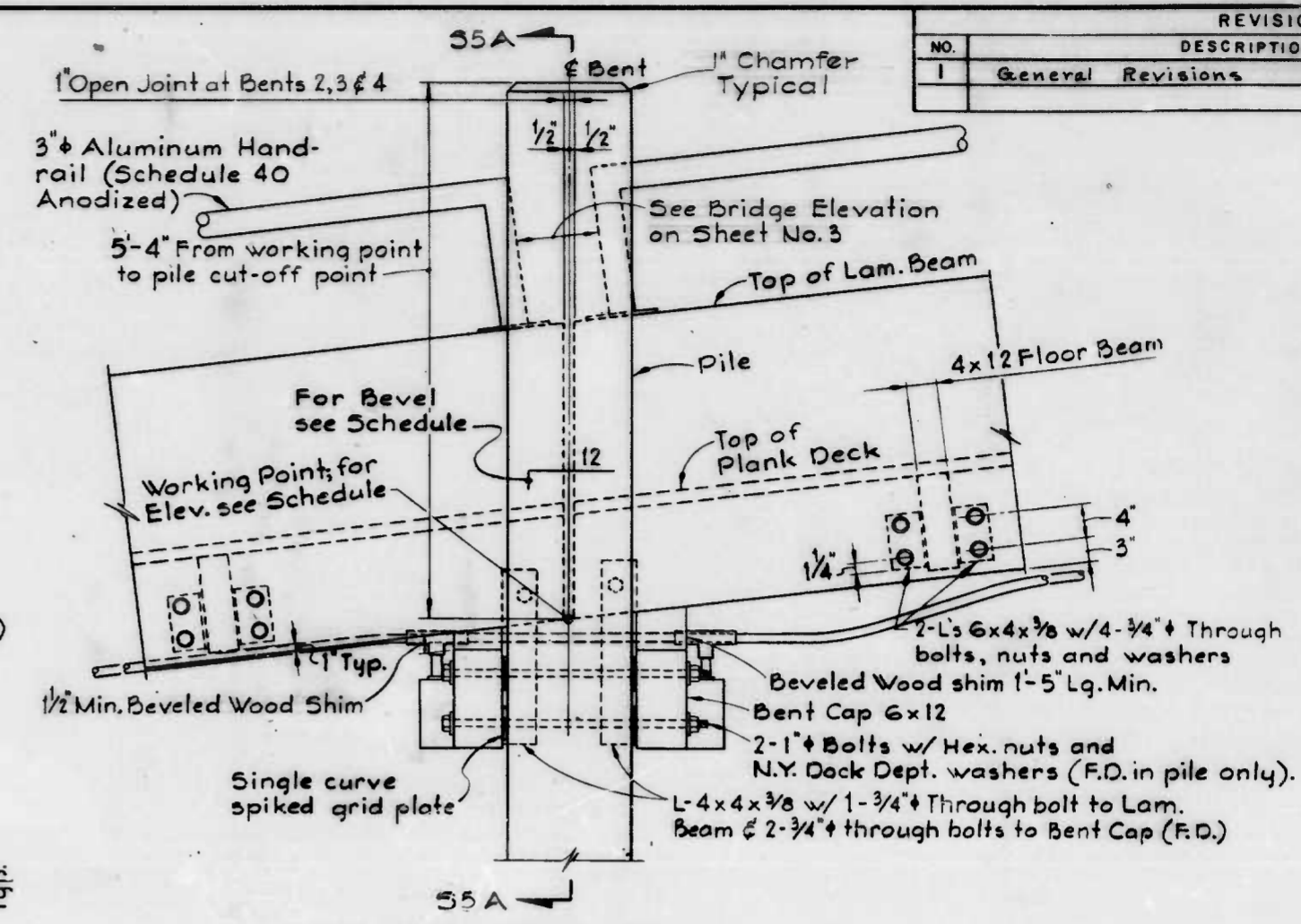
TYPICAL PERPENDICULAR SECTION
SCALE: 1"=1'-0"



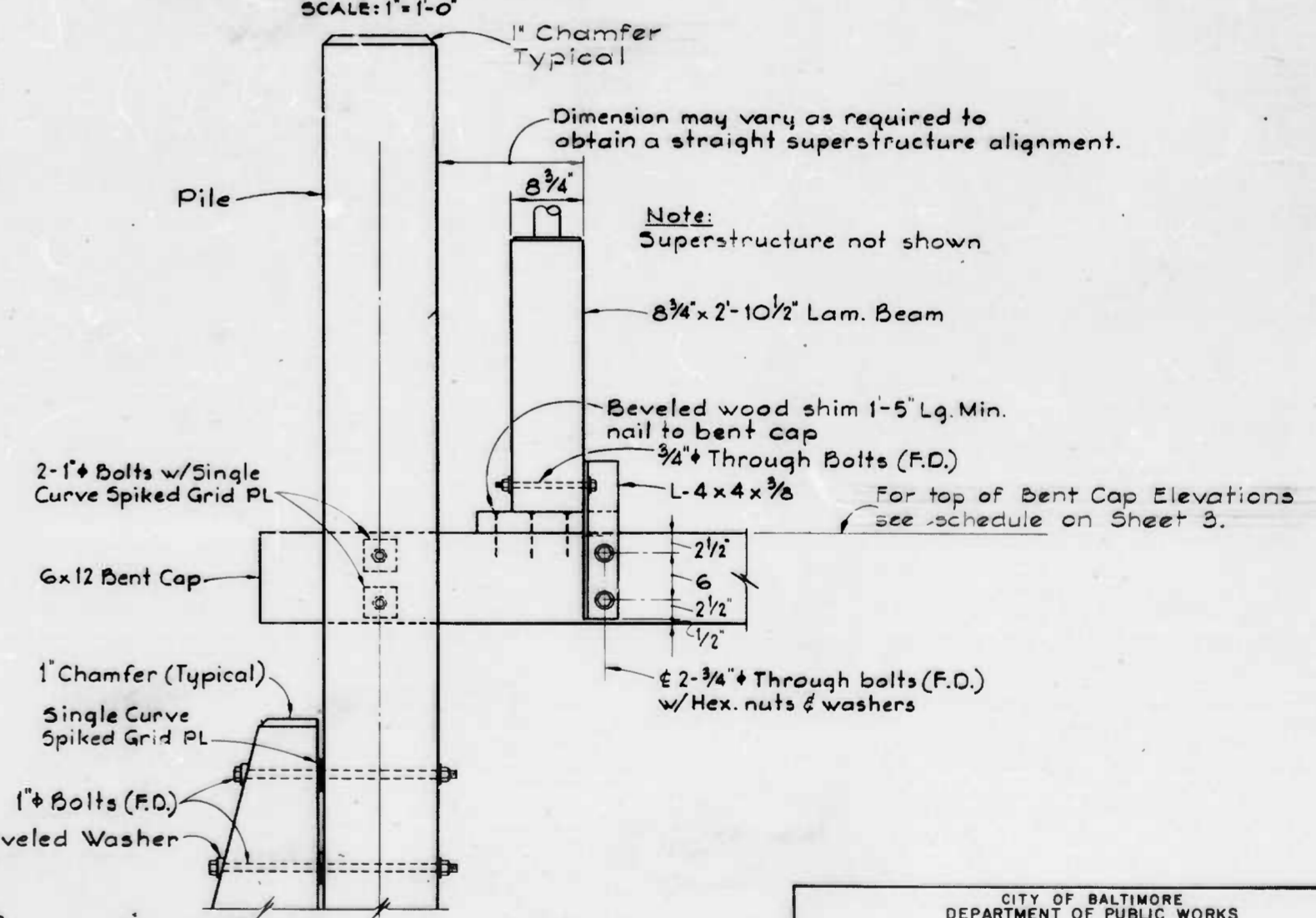
TYPICAL PART PLAN AT BENT CAP
SCALE: 1"=1'-0"



SECTION 55B/55
SCALE: 1"=1'-0"



TYPICAL BENT ELEVATION
SCALE: 1"=1'-0"



SECTION 55A/55
SCALE: 1"=1'-0"

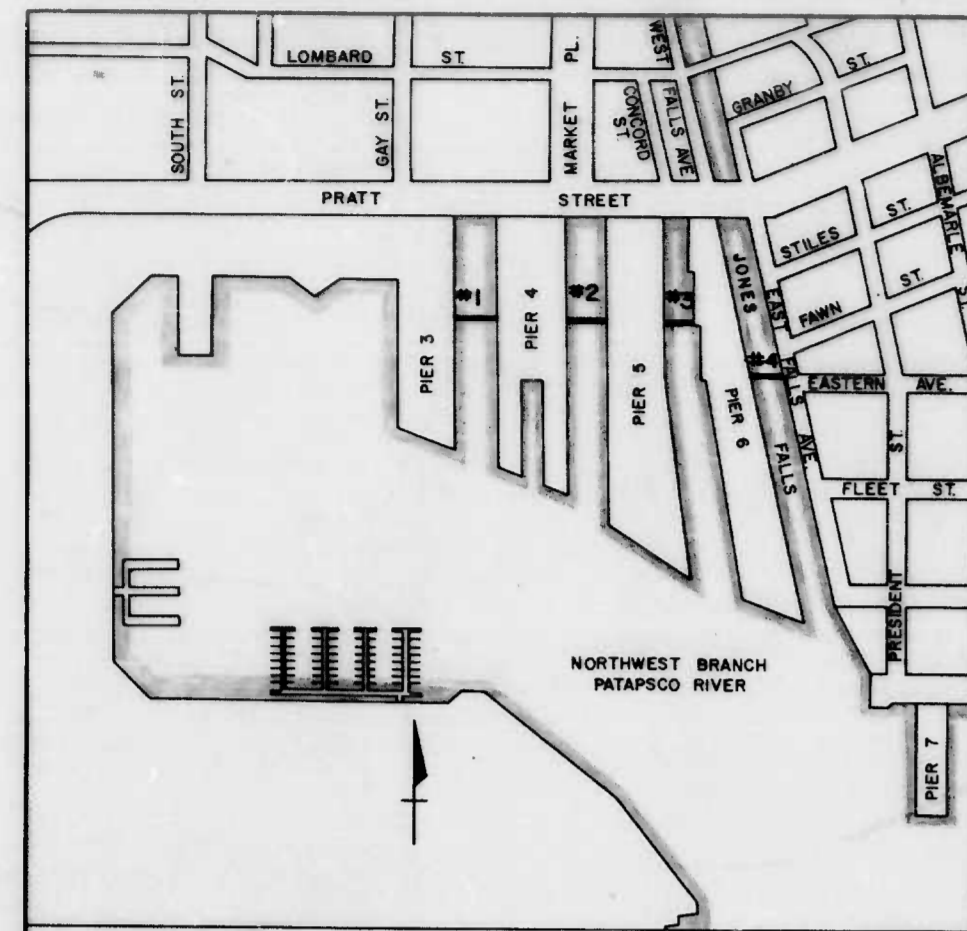
DRAWN BY: J.D. Mann
EXAMINED BY: C.R. Hart

V.O.7761-2A

WHTMAN, REQUARDT & ASSOCIATES
ENGINEERS
BALTIMORE, MARYLAND
BY: Charles F. ...

CITY OF BALTIMORE
DEPARTMENT OF PUBLIC WORKS
BUREAU OF HIGHWAYS
CONTRACT NO. 2675
PEDESTRIAN BRIDGE
INNER HARBOR EAST
PILE BENT DETAILS
SCALE: AS SHOWN
DATE: JAN. 27, 1982
SHEET 5 OF 6

FILE REF.



LOCATION PLAN
SCALE IN FEET
200 0 200 400 600 800

CITY OF BALTIMORE
DEPARTMENT OF PUBLIC WORKS
BUREAU OF HIGHWAYS



CONTRACT NO. 2675

PEDESTRIAN BRIDGE
INNER HARBOR EAST

	<p>WHITMAN, REQUARDT & ASSOCIATES ENGINEERS 1111 NORTH CHARLES STREET BALTIMORE, MARYLAND</p>	<p>JANUARY 1982 DATE <i>Charles F. Miskand</i> REG. NO. 2289</p>	<p><i>Thomas W. Kunkle</i> DIRECTOR OF PUBLIC WORKS <i>James M. Lawry</i> COMMISSIONER, TRANSIT AND TRAFFIC</p>	<p><i>George A. Ardikakis</i> HEAD, BUREAU OF HIGHWAYS <i>Walter J. Mangano</i> DIRECTOR, CONSTRUCTION AND BUILDING INSPECTION</p>	<p><i>W.D. Dwyer</i> COMMISSIONER, HOUSING AND COMMUNITY DEVELOPMENT <i>Fredrick W. ...</i> BALTIMORE CITY SEDIMENT CONTROL REPRESENTATIVE</p>
--	---	--	---	--	--