

GENERAL NOTES

1. Areas disturbed by this work shall be restored to a condition equal to that which existed prior to beginning work.
2. The elevations shown on these drawings are all referred to mean low tide as adopted by the Baltimore Survey Control System. Vertical control shall be from Bench Marks 7785 and 7786 for East Falls Ave.
3. Borings within the East Falls Ave. area of this project were taken in 1973. Copies of these with their plan location are bound in the specifications. Borings for Area 17A are shown on City of Baltimore Contract No. 2550.
4. The Contractor shall protect all existing Baltimore City topographic traverse points and Bench Marks until the construction baseline and construction Bench Marks are established and referenced by the Contractor.
5. Underground utilities shown on location plan are for the convenience of the Contractor and there is no warranty or guarantee of the correctness or the

completeness of the information shown. The Contractor shall verify all utility information to his own satisfaction.

6. Contractor shall deliver mooring cleat removed to bridge maintenance station at 803 Lancaster Street.

DRAWN BY G. EVANS
EXAMINED BY C. ANDERSON

W.O. 7853-2

WHITMAN, REQUARDT AND ASSOCIATES
ENGINEERS
BALTIMORE MARYLAND



CITY OF BALTIMORE
DEPARTMENT OF PUBLIC WORKS
BUREAU OF HIGHWAYS

CONTRACT NO. 2751

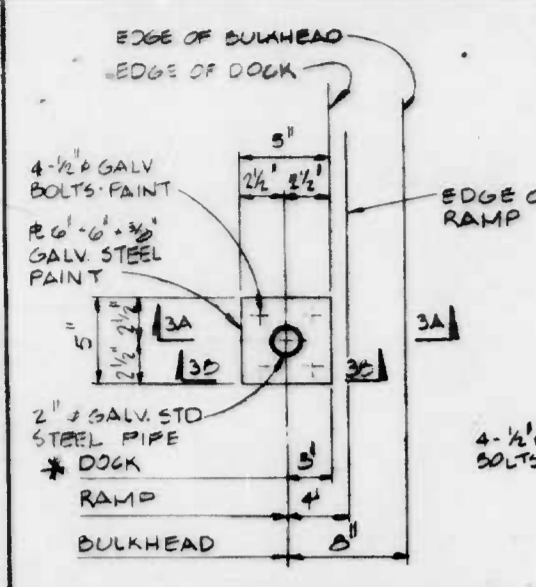
INNER HARBOR EAST
WATER TAXI DOCKS

PLAN AND SECTIONS

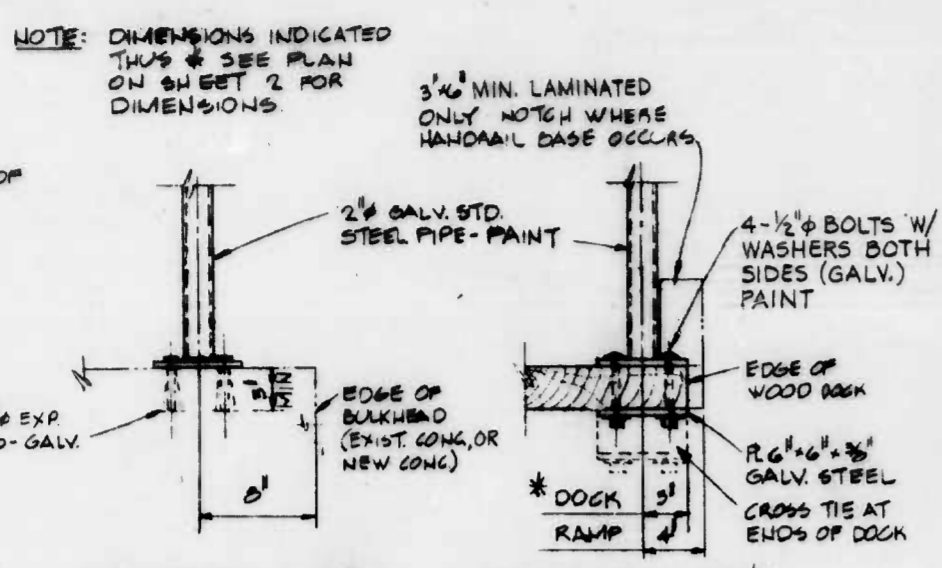
SCALE: AS SHOWN DATE: AUGUST, 1982
SHEET 2 OF 3

FILE REF.

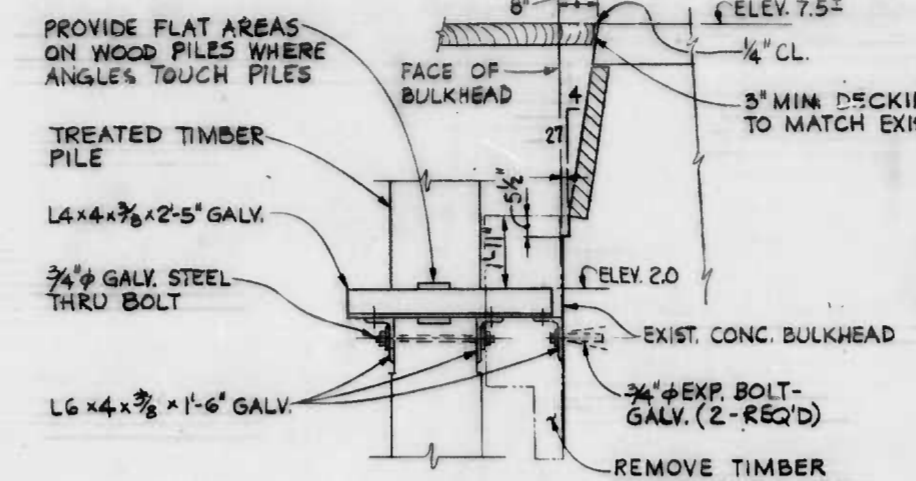
REVISIONS		
NO.	DESCRIPTION	DATE BY



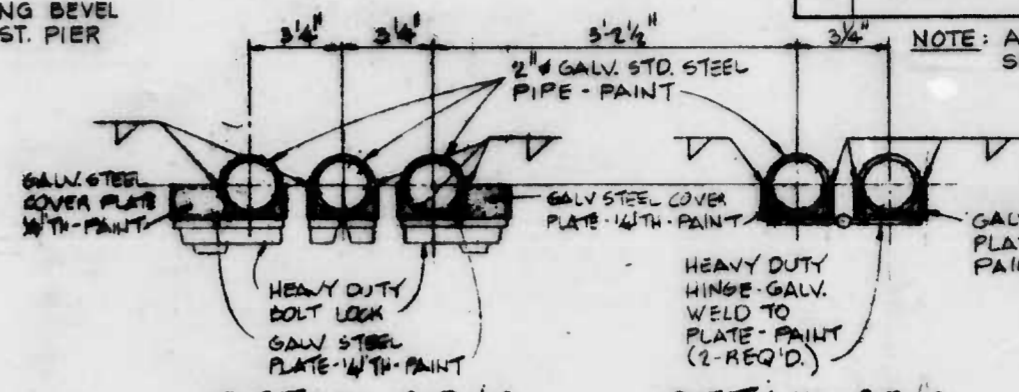
PLAN OF HANDRAIL BASE
SCALE 1/2" = 1'-0"



SECTION 3A/3 SCALE 1/2" = 1'-0"
SECTION 3B/3 SCALE 1/2" = 1'-0"

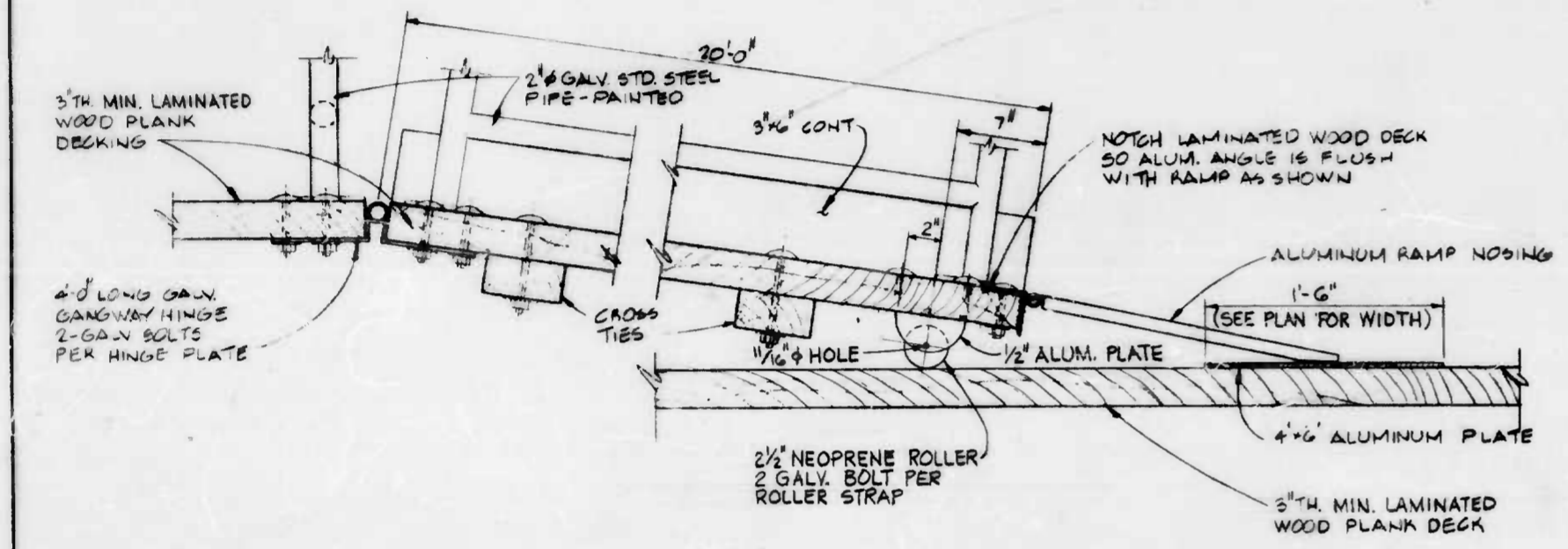


ELEVATION
SECTION 3C/2
SCALE 3/4" = 1'-0"

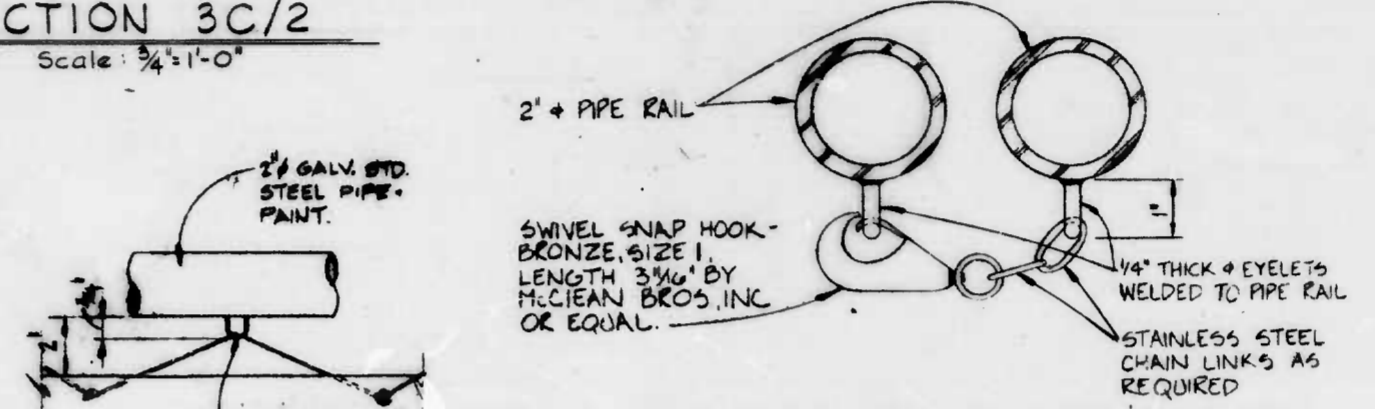


DETAIL 3D/3 SCALE 3/4" = 1'-0"
DETAIL 3E/3 SCALE 3/4" = 1'-0"

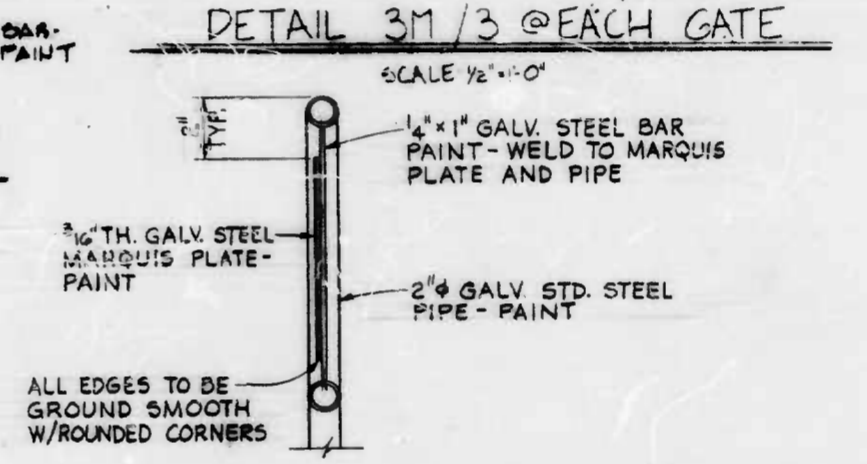
TYPICAL GATE D
SCALE 1/2" = 1'-0"



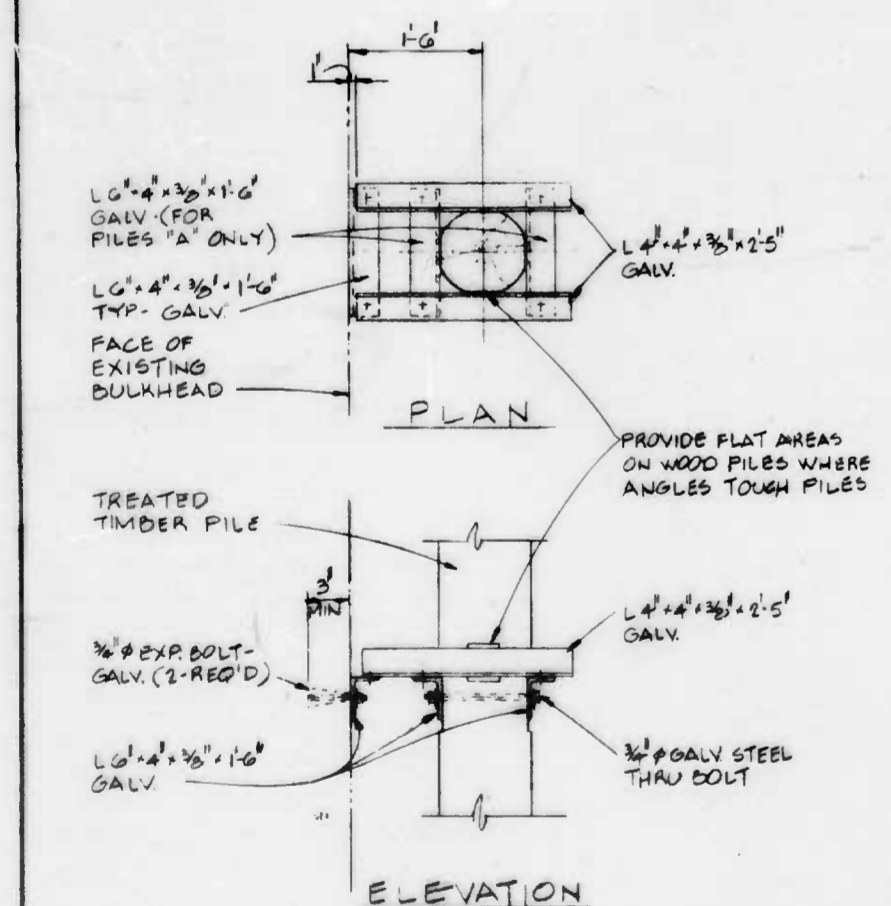
SECTION 3F/2
SCALE 1/2" = 1'-0"



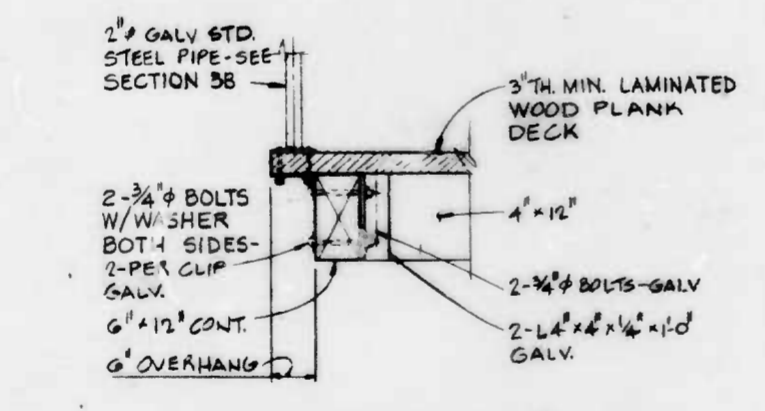
EYELET FOR CANVAS PANEL - DETAIL 3K/2
SCALE 3/4" = 1'-0"



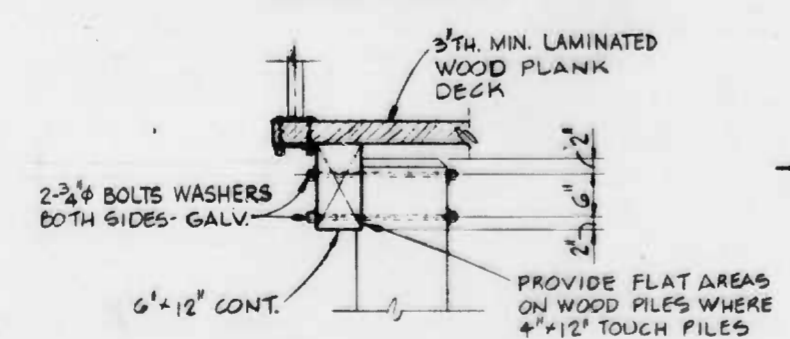
SECTION 3L/3 SCALE 3/4" = 1'-0"
SECTION 3N/3 SCALE 1/2" = 1'-0"



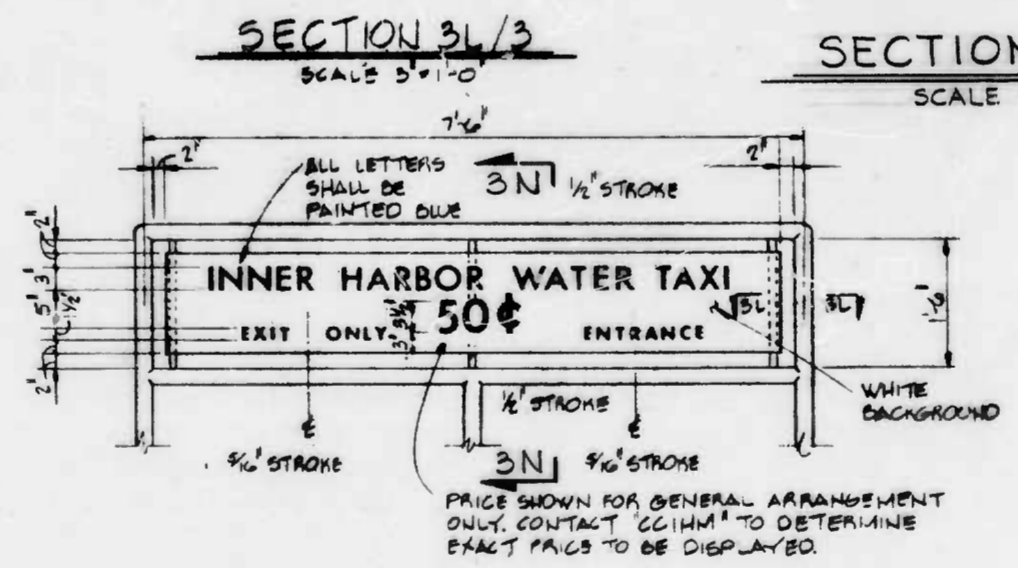
PILE BRACING DETAIL AT EAST FALLS AVE PLATFORM
SCALE 3/4" = 1'-0"



SECTION 3H/2
SCALE 3/4" = 1'-0"



SECTION 3I/2
SCALE 3/4" = 1'-0"



ELEVATION WATER TAXI ENTRANCE/EXIT SIGN
SCALE 3/4" = 1'-0"

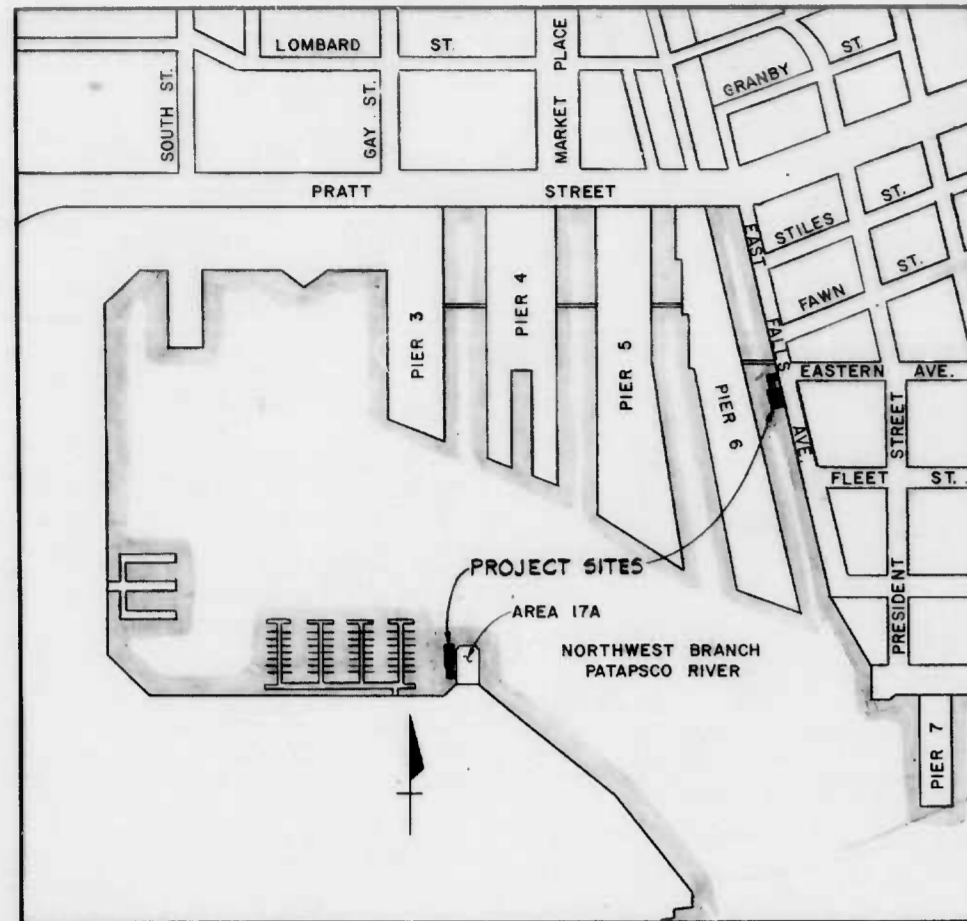
DRAWN BY W. LAFFERMAN
EXAMINED BY C. GOUDREAU

W.O. 7853-2



WHITMAN, REQUARDT & ASSOCIATES
ENGINEERS
BALTIMORE MARYLAND

CITY OF BALTIMORE
DEPARTMENT OF PUBLIC WORKS
BUREAU OF HIGHWAYS
CONTRACT NO. 2751
INNER HARBOR EAST
WATER TAXI DOCKS
MISC. DETAILS
SCALE AS SHOWN
DATE: AUGUST, 1982
SHEET 3 OF 3



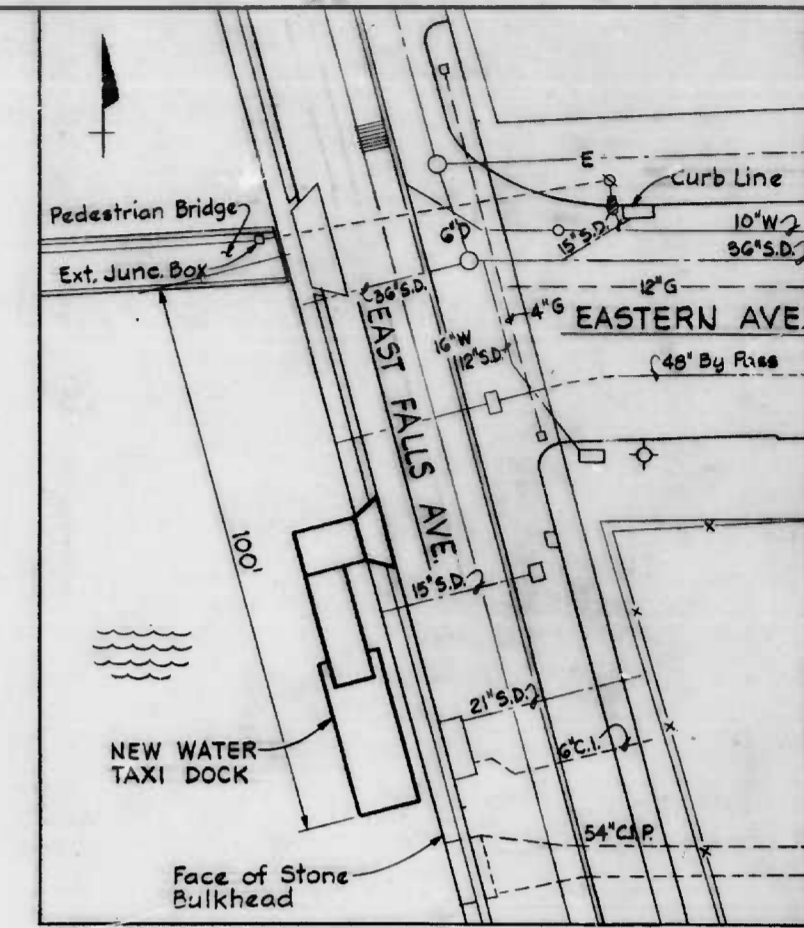
LOCATION PLAN
SCALE = 1" = 400'

CITY OF BALTIMORE
DEPARTMENT OF PUBLIC WORKS
BUREAU OF HIGHWAYS



CONTRACT NO. 2751

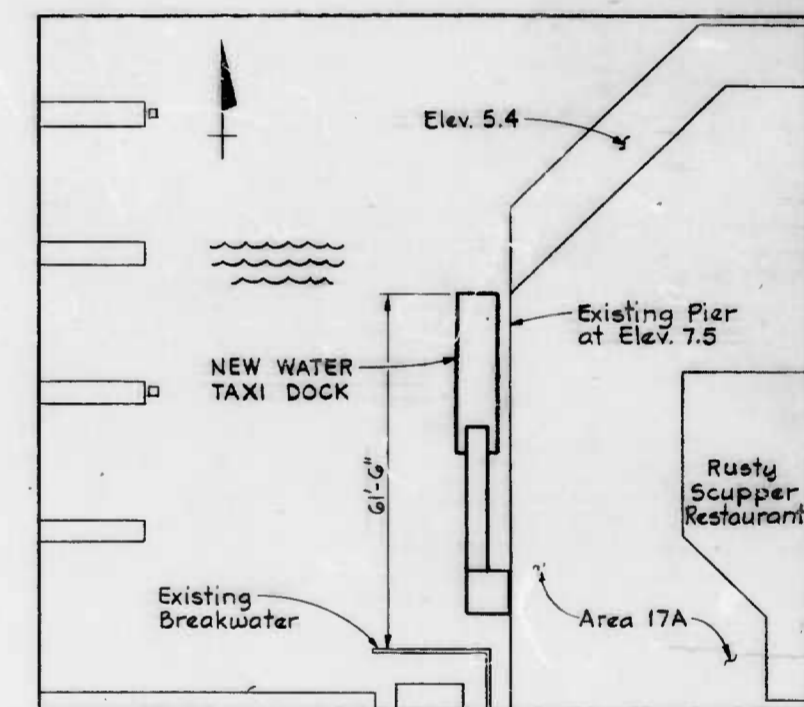
INNER HARBOR EAST
WATER TAXI DOCKS



SITE PLAN
SCALE = 1" = 20'

INDEX OF DRAWINGS

SHEET NO.	TITLE
1 OF 3	TITLE SHEET
2 OF 3	PLAN AND SECTIONS
3 OF 3	MISCELLANEOUS DETAILS



SITE PLAN
SCALE = 1" = 20'

DEPARTMENT OF PUBLIC WORKS



WHITMAN, REQUARDT AND ASSOCIATES
ENGINEERS
2315 ST. PAUL STREET
BALTIMORE, MARYLAND

AUGUST, 1982
DATE

Charles R. Cates
REG. NO. 4870

RIGHT OF WAY

Charles R. Cates
GRADE EST.

Frederick W. Moore
CHIEF, EROSION & SEDIMENT CONTROL SECTION

HIGHWAY ENGINEERING DIVISION

APPROVED: *William F. O'Keefe*
BY CHIEF, HIGHWAY ENGINEERING DIVISION

BUREAU OF WATER AND WASTE WATER

APPROVED: *A. K. Kitchener*
BY HEAD, BUREAU OF WATER AND WASTE WATER

APPROVED: *A. K. Kitchener*
BY CHIEF, WATER ENGINEERING DIVISION

APPROVED: *John G. Kelly*
BY CHIEF WASTE WATER ENGINEERING DIVISION

BUREAU OF CONSTRUCTION MANAGEMENT

APPROVED: *John G. Kelly*
BY HEAD, BUREAU OF CONSTRUCTION MANAGEMENT

APPROVED: *Frank J. McNeill*
BY CHIEF, SURVEYS AND RECORDS DIVISION

APPROVED: *Richard J. ...*
BY DIRECTOR OF PUBLIC WORKS

BUREAU OF HIGHWAYS

APPROVED: *George A. Antikovich*
BY HEAD, BUREAU OF HIGHWAYS