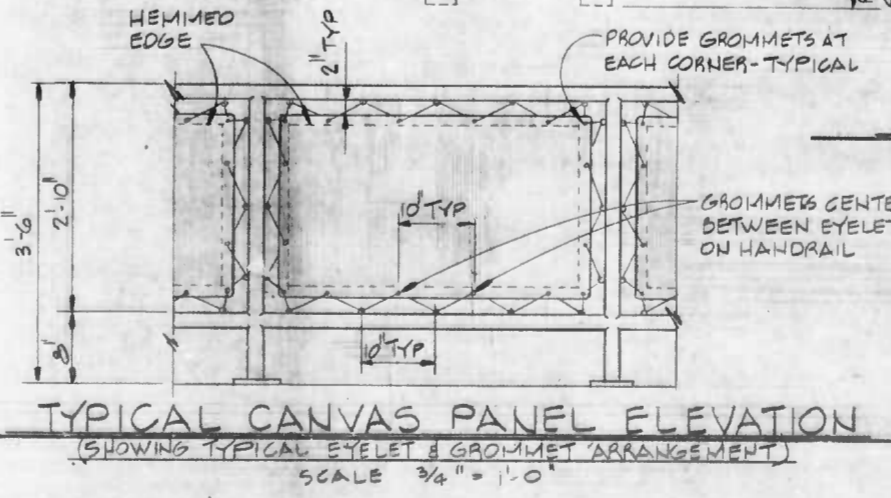
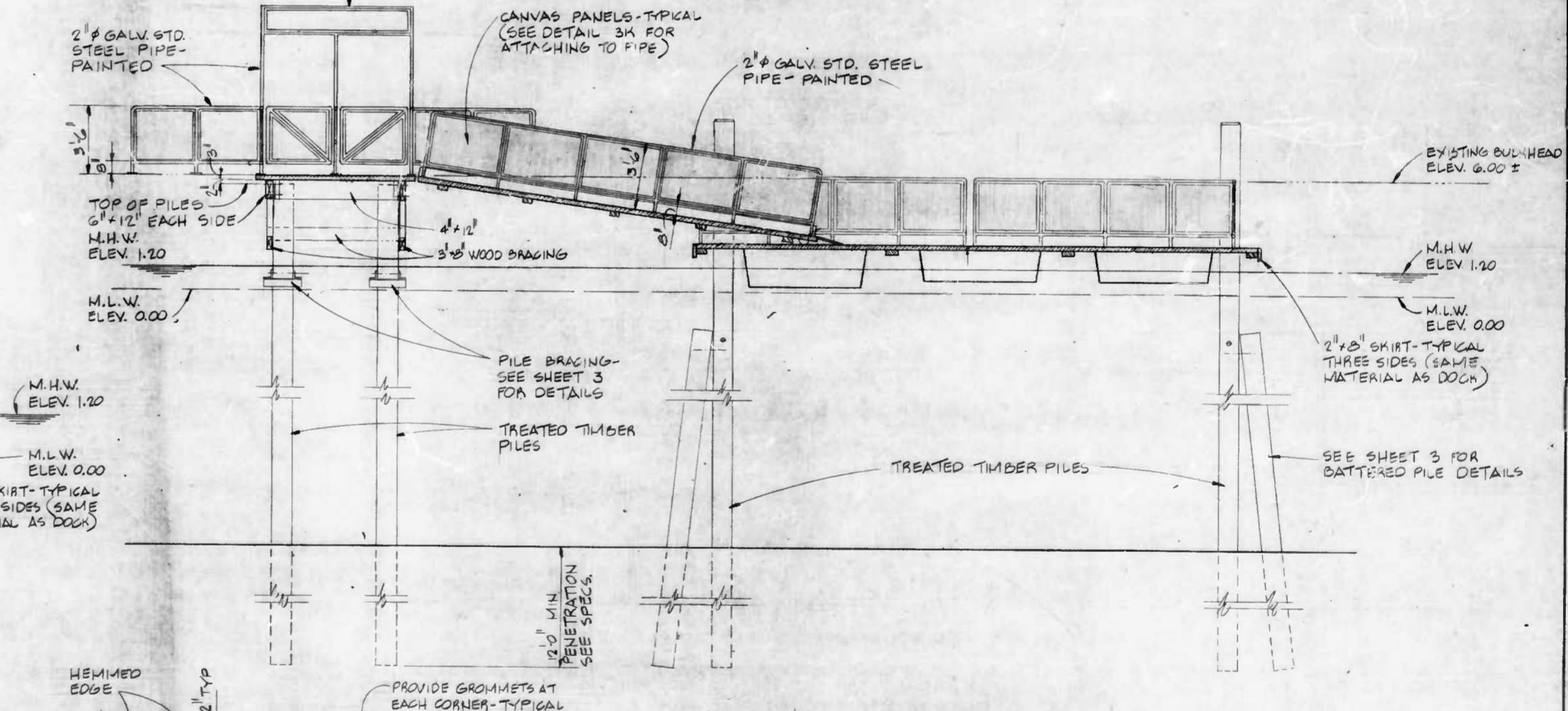
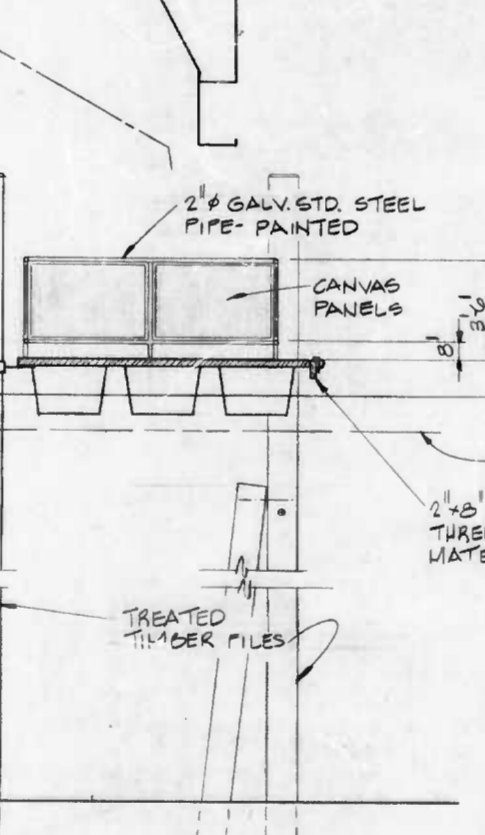
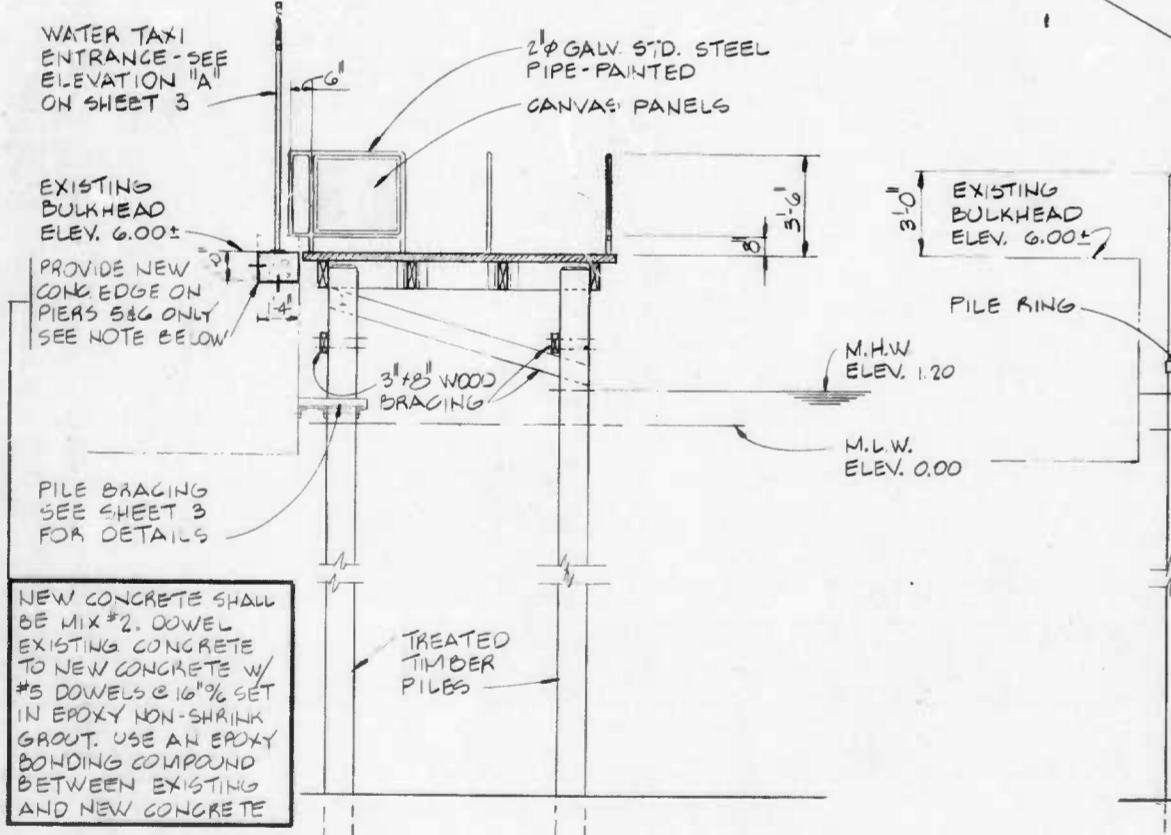
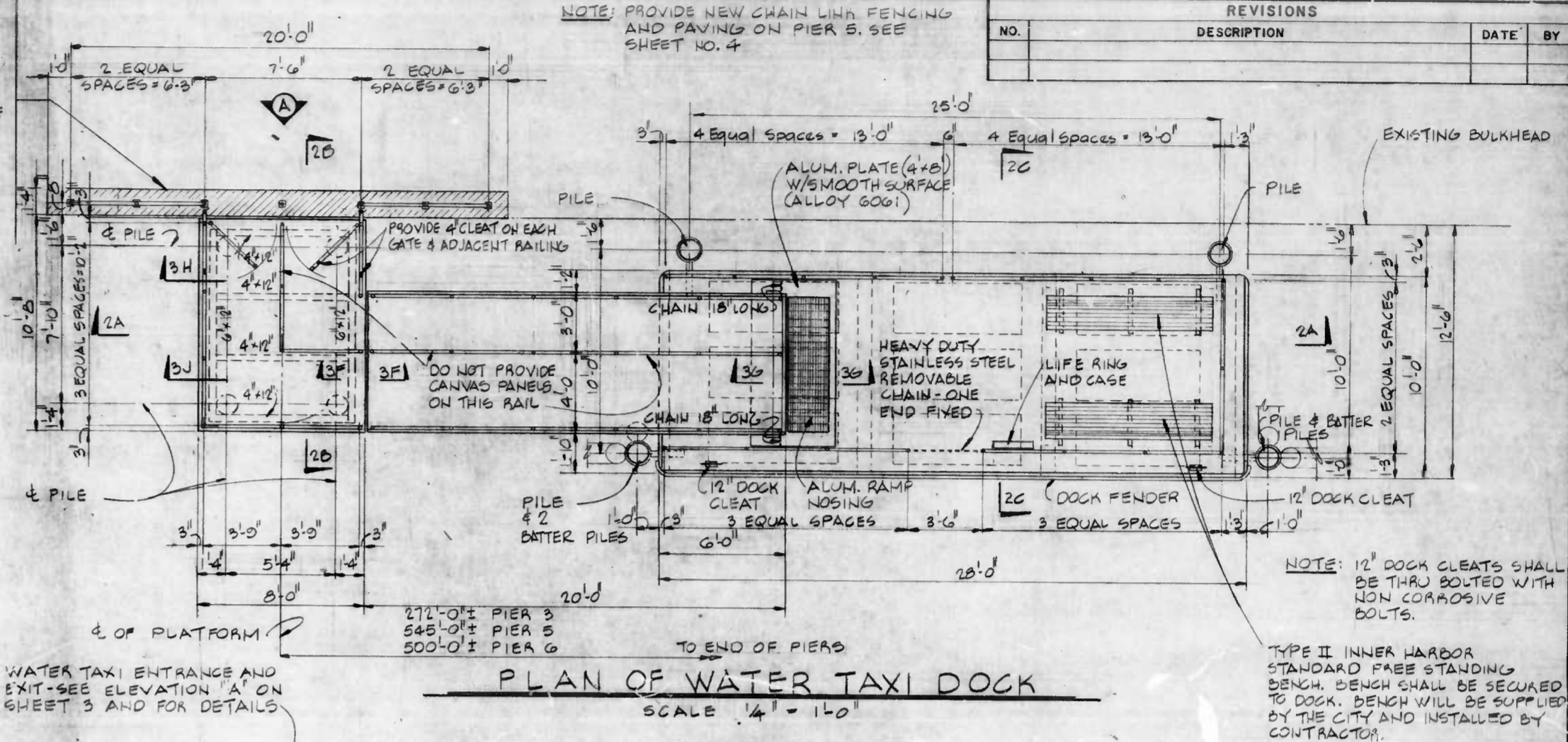
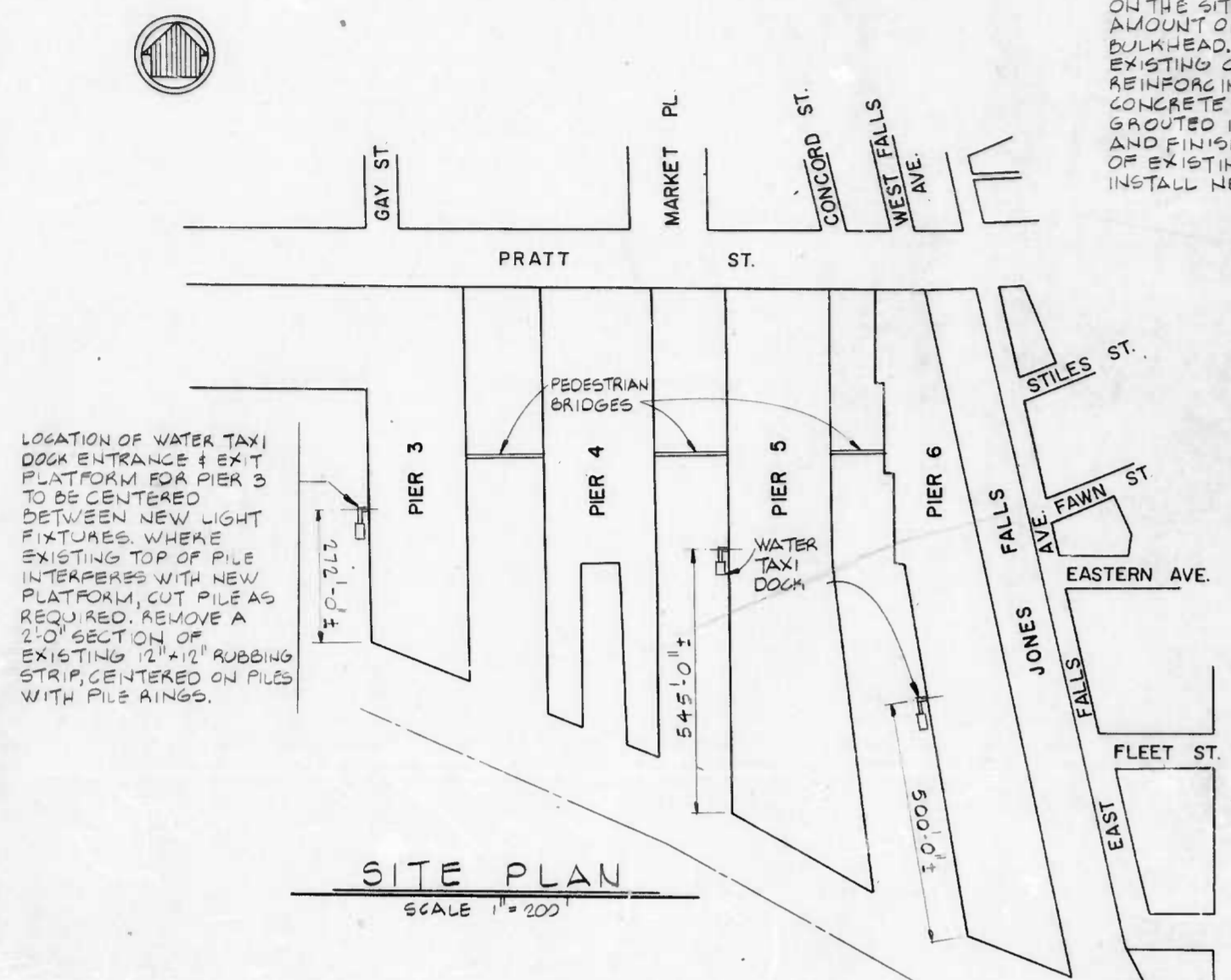


FILE REF.

TYPICAL NOTE:
 FINAL LOCATION OF WATER TAXI DOCKS SHALL BE DETERMINED IN FIELD USING THE MOST SUITABLE LOCATION IN THE AREAS INDICATED ON THE SITE PLAN WITH THE LEAST AMOUNT OF REPAIR TO EXISTING BULKHEAD. ON PIERS 5 & 6, REMOVE EXISTING CONCRETE, EXPOSING REINFORCING STEEL. INSTALL NEW CONCRETE WITH NEW REINFORCING GROUTED INTO EXISTING CONCRETE AND FINISH TO MATCH ELEVATION OF EXISTING BULKHEAD. DO NOT INSTALL NEW CONCRETE ON PIER 3.

NOTE: PROVIDE NEW CHAIN LINK FENCING AND PAVING ON PIER 5. SEE SHEET NO. 4.

REVISIONS			
NO.	DESCRIPTION	DATE	BY



NEW CONCRETE SHALL BE MIX #2. DOWEL EXISTING CONCRETE TO NEW CONCRETE W/ #3 DOWELS @ 18" SET IN EPOXY NON-SHRINKING GROUT. USE AN EPOXY BONDING COMPOUND BETWEEN EXISTING AND NEW CONCRETE.

NOTE: 12" DOCK CLEATS SHALL BE THRU BOLTED WITH NON CORROSIVE BOLTS.
 TYPE II INNER HARBOR STANDARD FREE STANDING BENCH. BENCH SHALL BE SECURED TO DOCK. BENCH WILL BE SUPPLIED BY THE CITY AND INSTALLED BY CONTRACTOR.

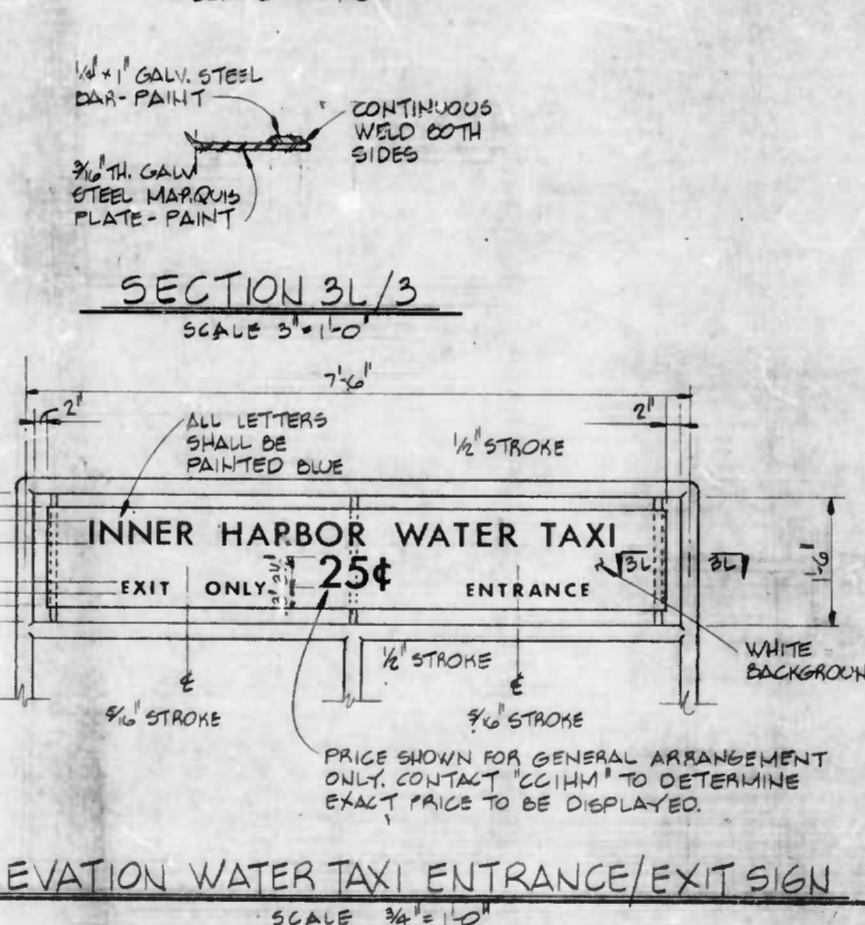
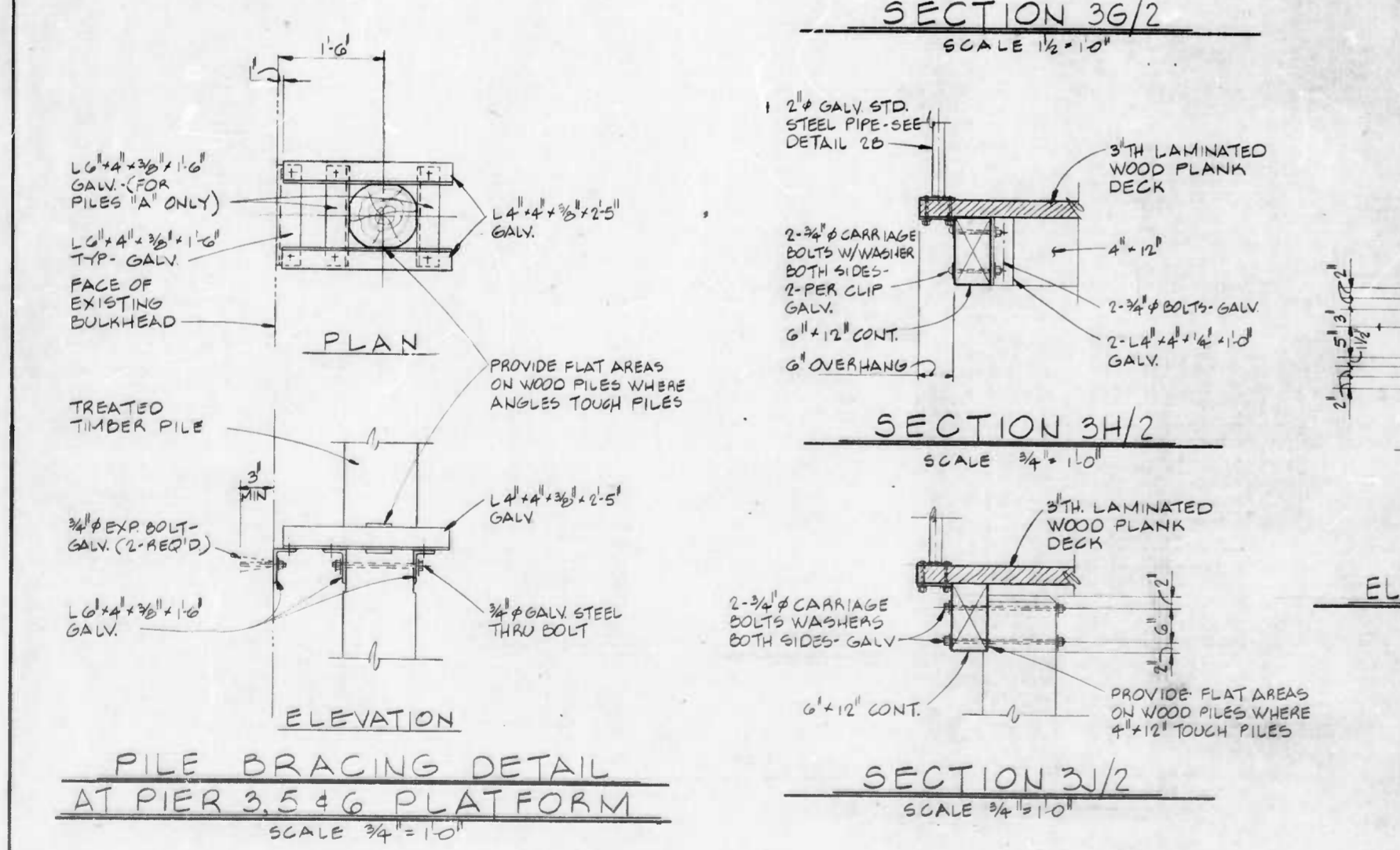
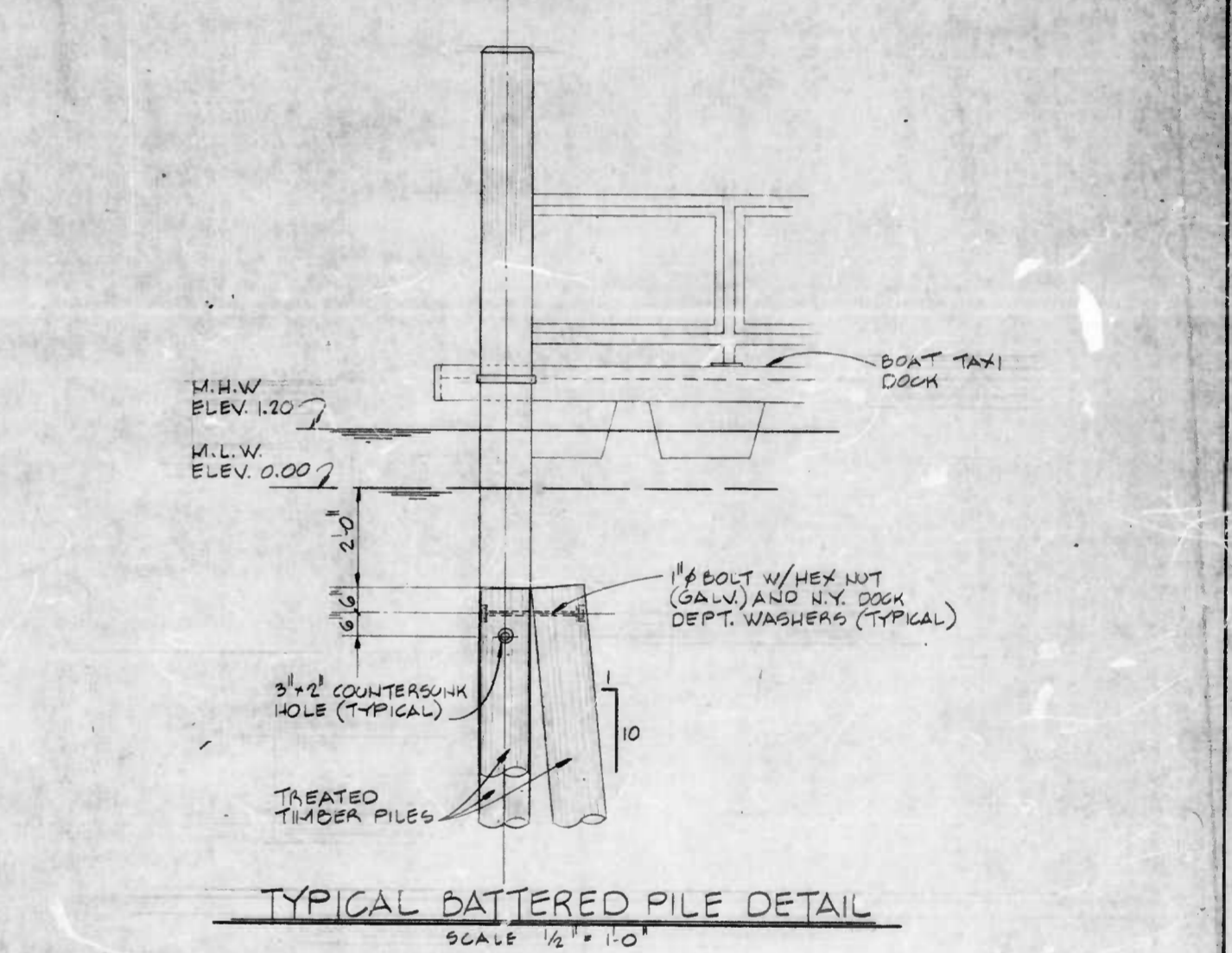
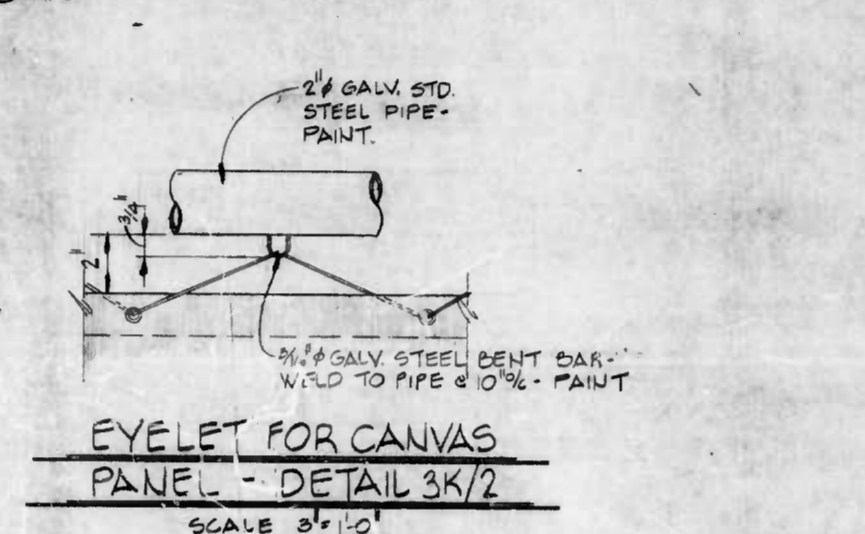
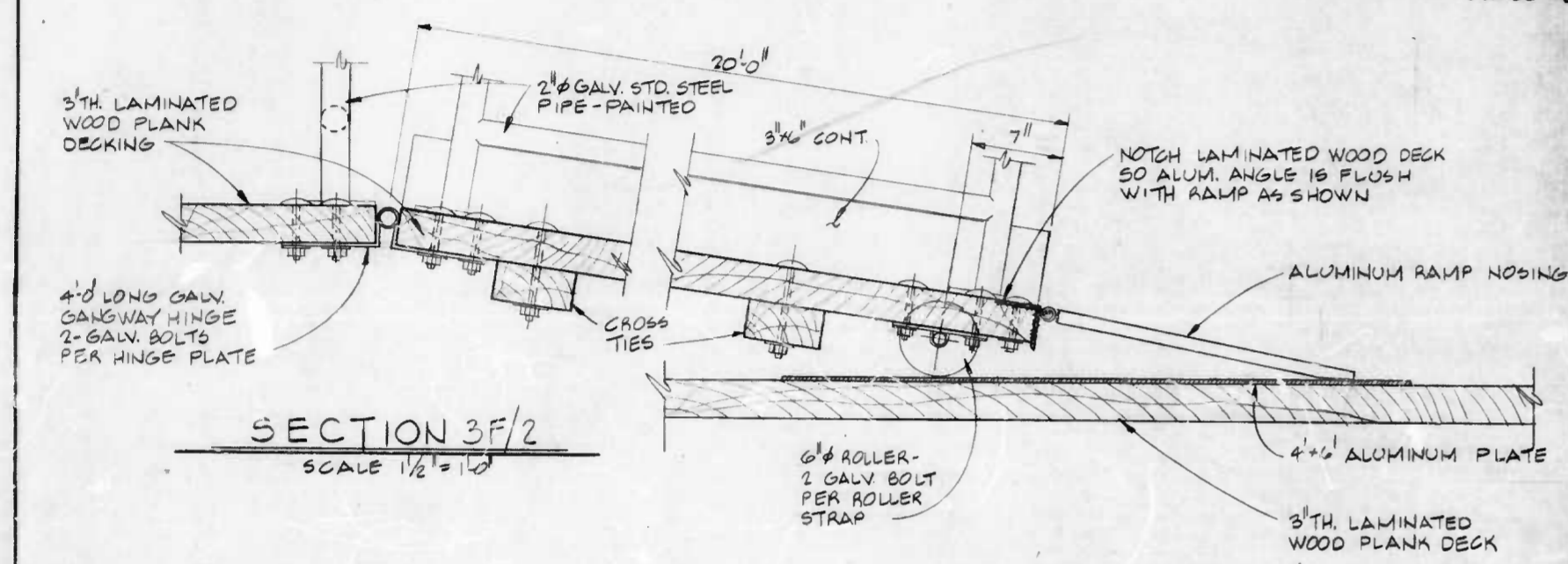
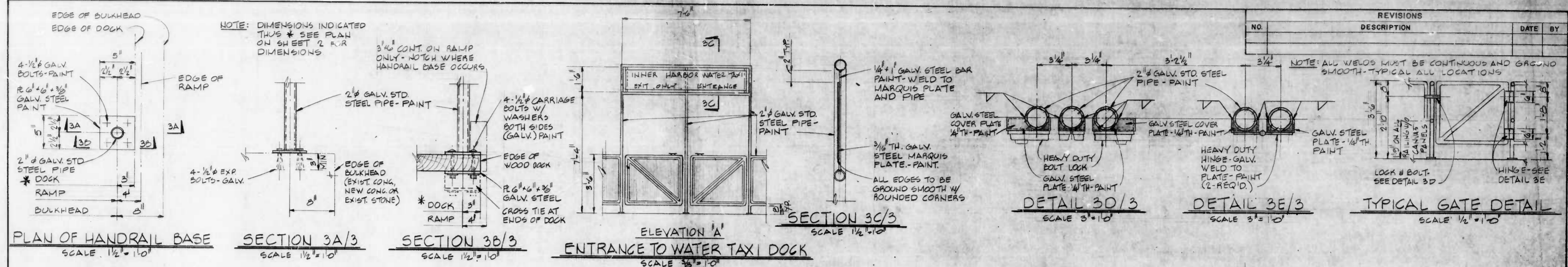
DRAWN BY *[Signature]*
 EXAMINED BY *[Signature]*

WHITMAN, REQUARDT & ASSOCIATES
 ENGINEERS
 BALTIMORE MARYLAND
 BY *[Signature]*

CITY OF BALTIMORE
 DEPARTMENT OF PUBLIC WORKS
 BUREAU OF HIGHWAYS
 CONTRACT NO. 2613
 INNER HARBOR EAST
 BOAT TAXI DOCKS AND PIER 5
 TEMPORARY FENDER SYSTEM
PLAN AND SECTIONS
 SCALE AS SHOWN DATE FEBRUARY, 1980
 SHEET 2 OF 6

FILE REF.

FILE REF.



DRAWN BY: *[Signature]*
EXAMINED BY: *[Signature]*

WHITMAN, REQUARDT & ASSOCIATES
ENGINEERS
BALTIMORE MARYLAND

CITY OF BALTIMORE
DEPARTMENT OF PUBLIC WORKS
BUREAU OF HIGHWAYS

CONTRACT NO. 2613

INNER HARBOR EAST
BOAT TAXI DOCKS AND PIER 5
TEMPORARY FENDER SYSTEM

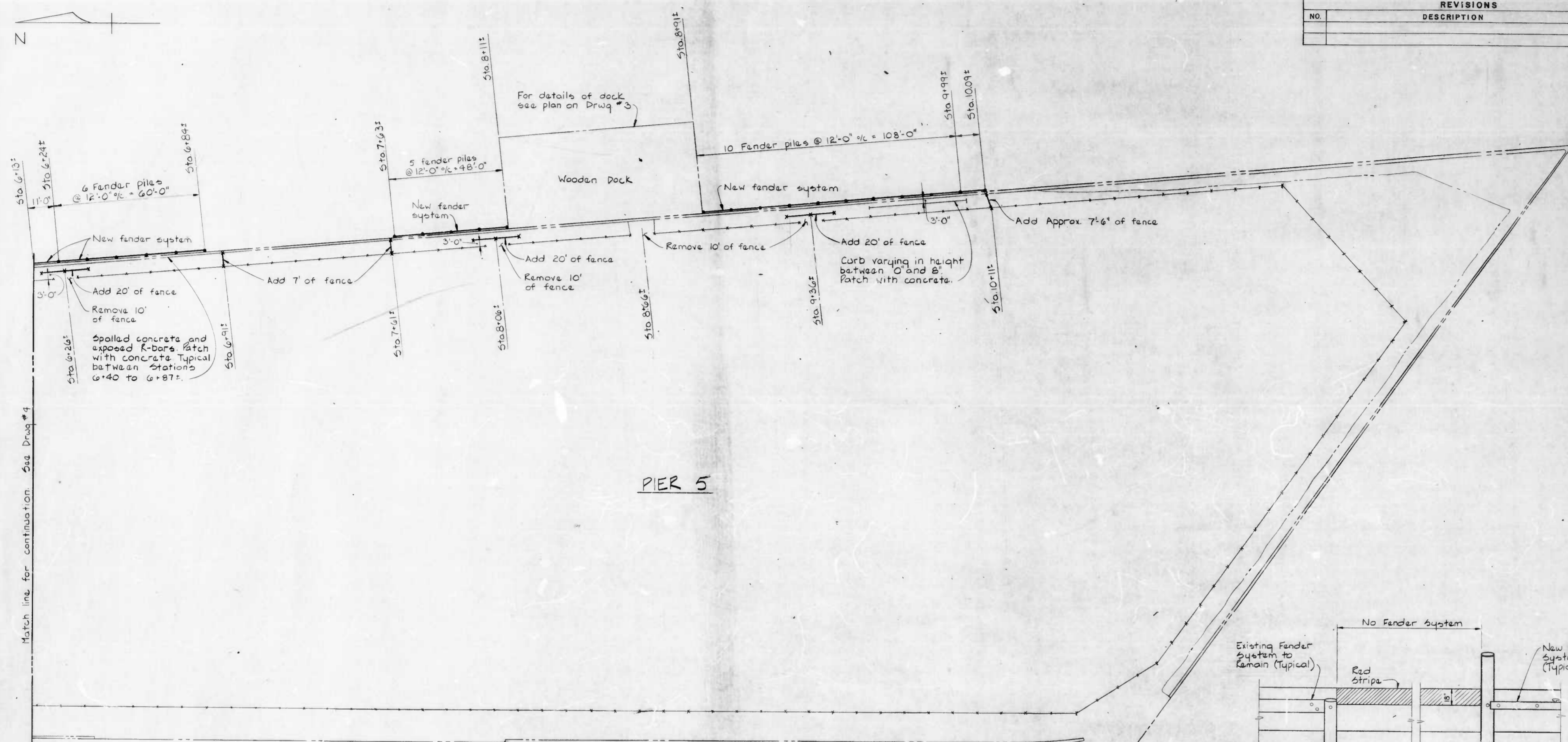
MISC. DETAILS

SCALE AS SHOWN DATE: FEBRUARY, 1960
SHEET 3 OF 6

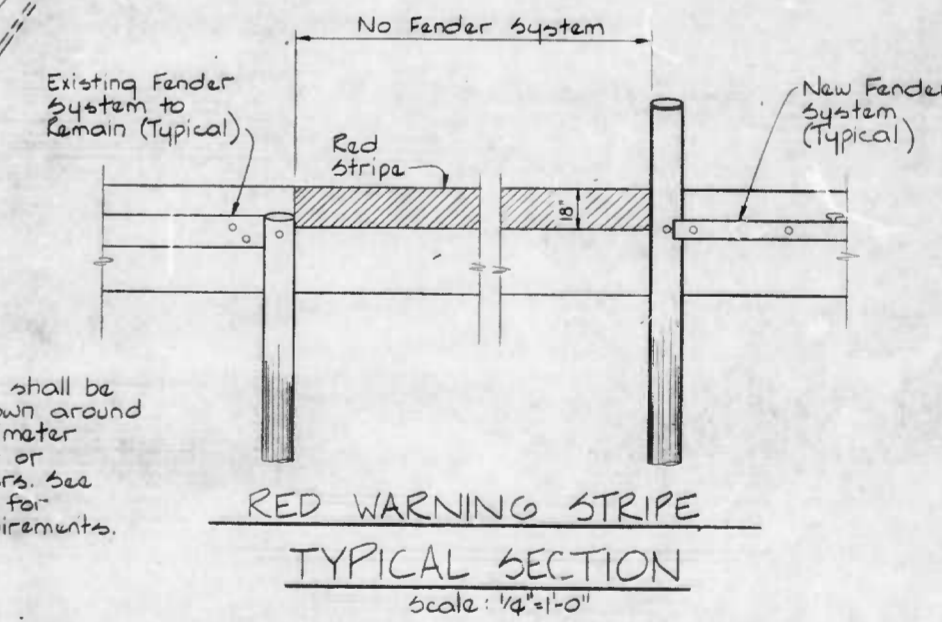
FILE REF.

FILE REF

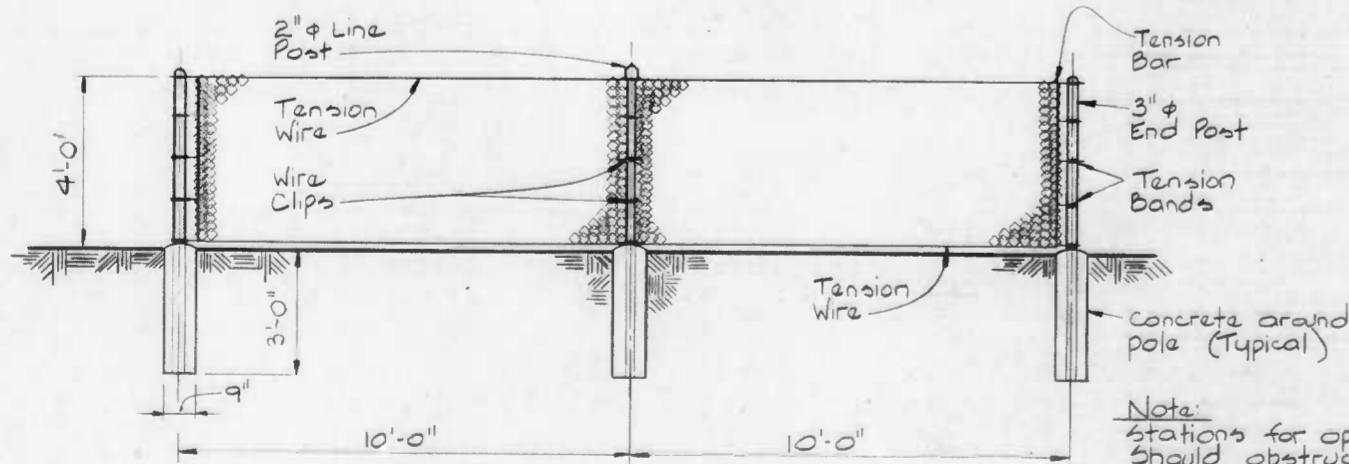
REVISIONS			
NO.	DESCRIPTION	DATE	BY



PIER 5



Note:
Face of Pier 5 shall be painted as shown around the entire perimeter except at bow or existing fenders. See specifications for additional requirements.

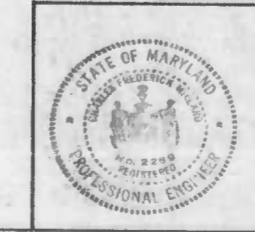


PLAN
Scale: 1" = 20'

TYPICAL NEW FENCE

Note:
Stations for openings in fence are approximate. Should obstructions interfere with placement or use of the opening, the opening may be moved 10' to 20' either way as necessitated by the obstruction & as directed by the engineer.

DRAWN BY: *B. J. King*
EXAMINED BY: *J. K. Appert*



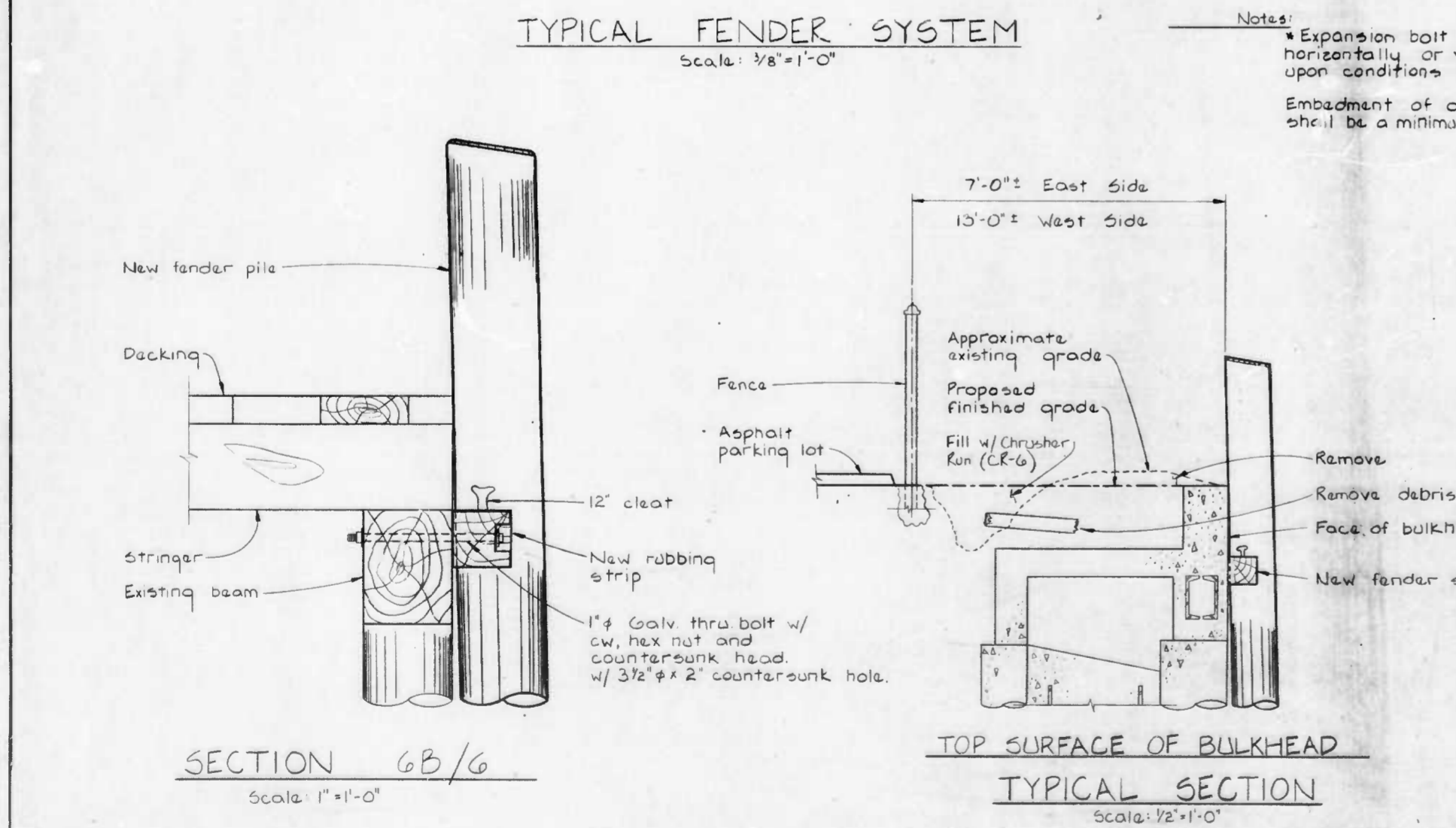
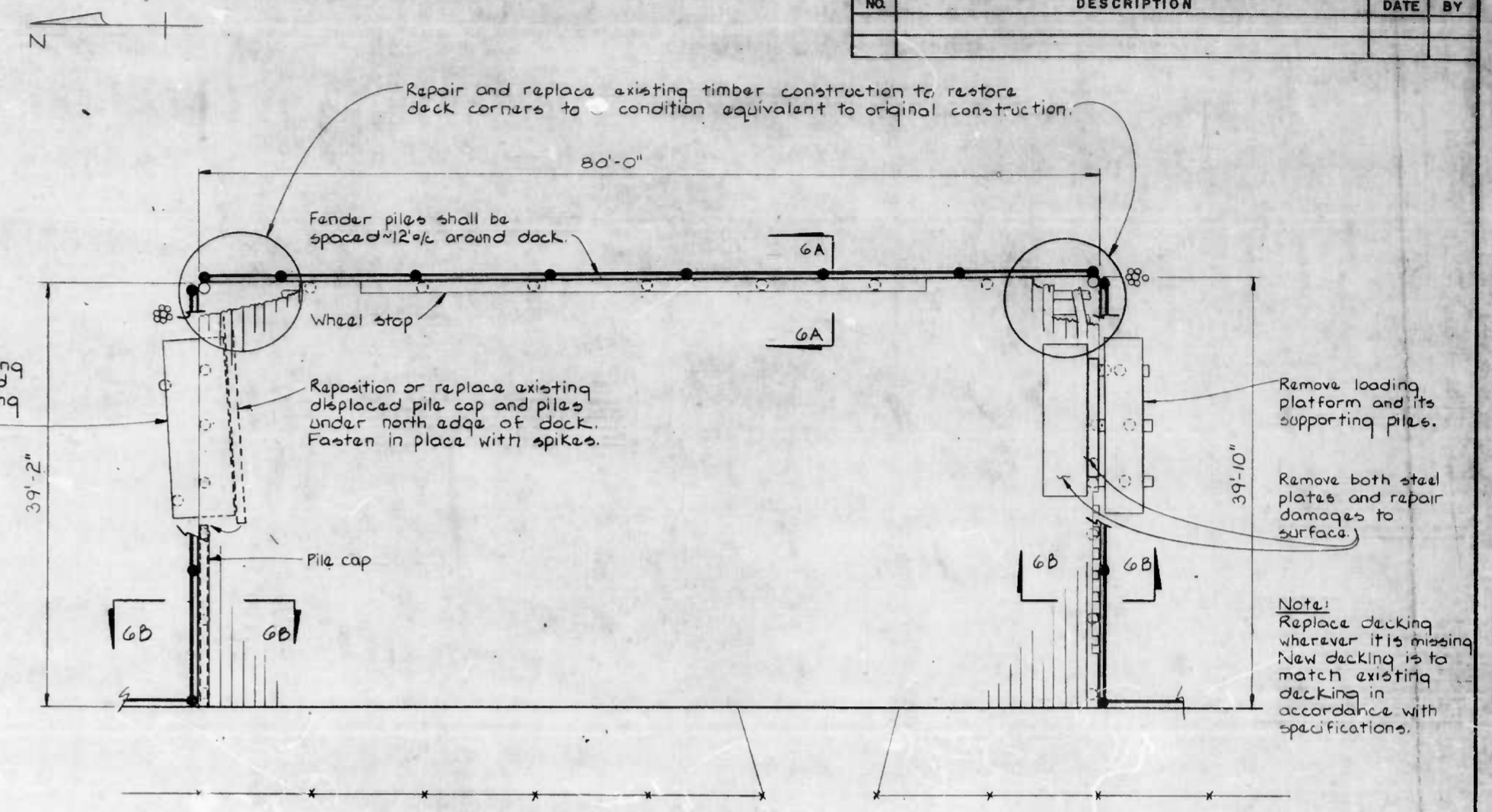
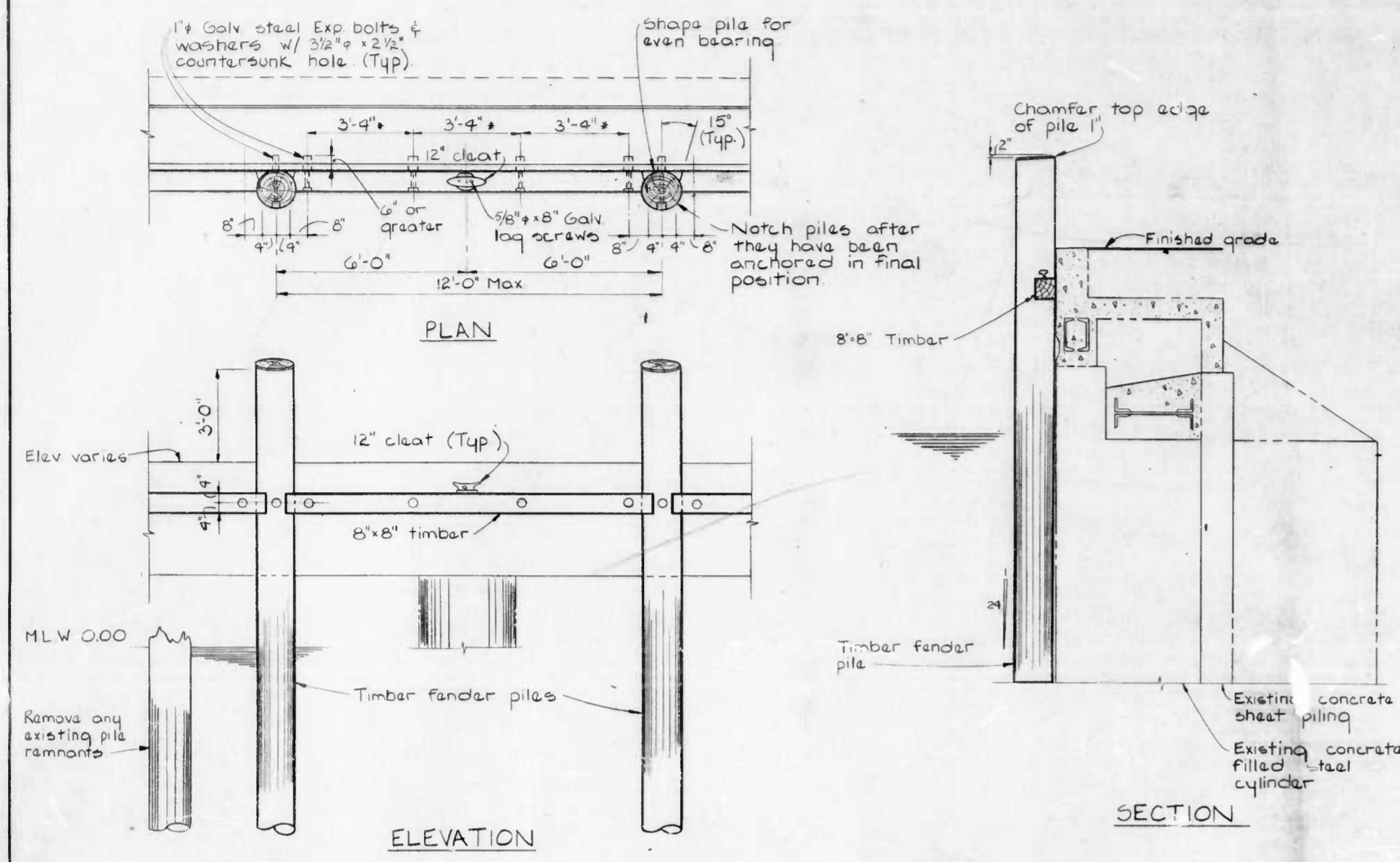
WHITMAN, REQUARDT & ASSOCIATES
ENGINEERS
BALTIMORE MARYLAND
BY: *Charles H. Johnson*

CITY OF BALTIMORE
DEPARTMENT OF PUBLIC WORKS
BUREAU OF HIGHWAYS
CONTRACT NO. 2613
INNER HARBOR EAST
BOAT TAXI DOCKS AND PIER 5
TEMPORARY FENDER SYSTEM
PLAN AND SECTIONS
SCALE AS SHOWN DATE: FEBRUARY, 1980
SHEET 5 OF 6

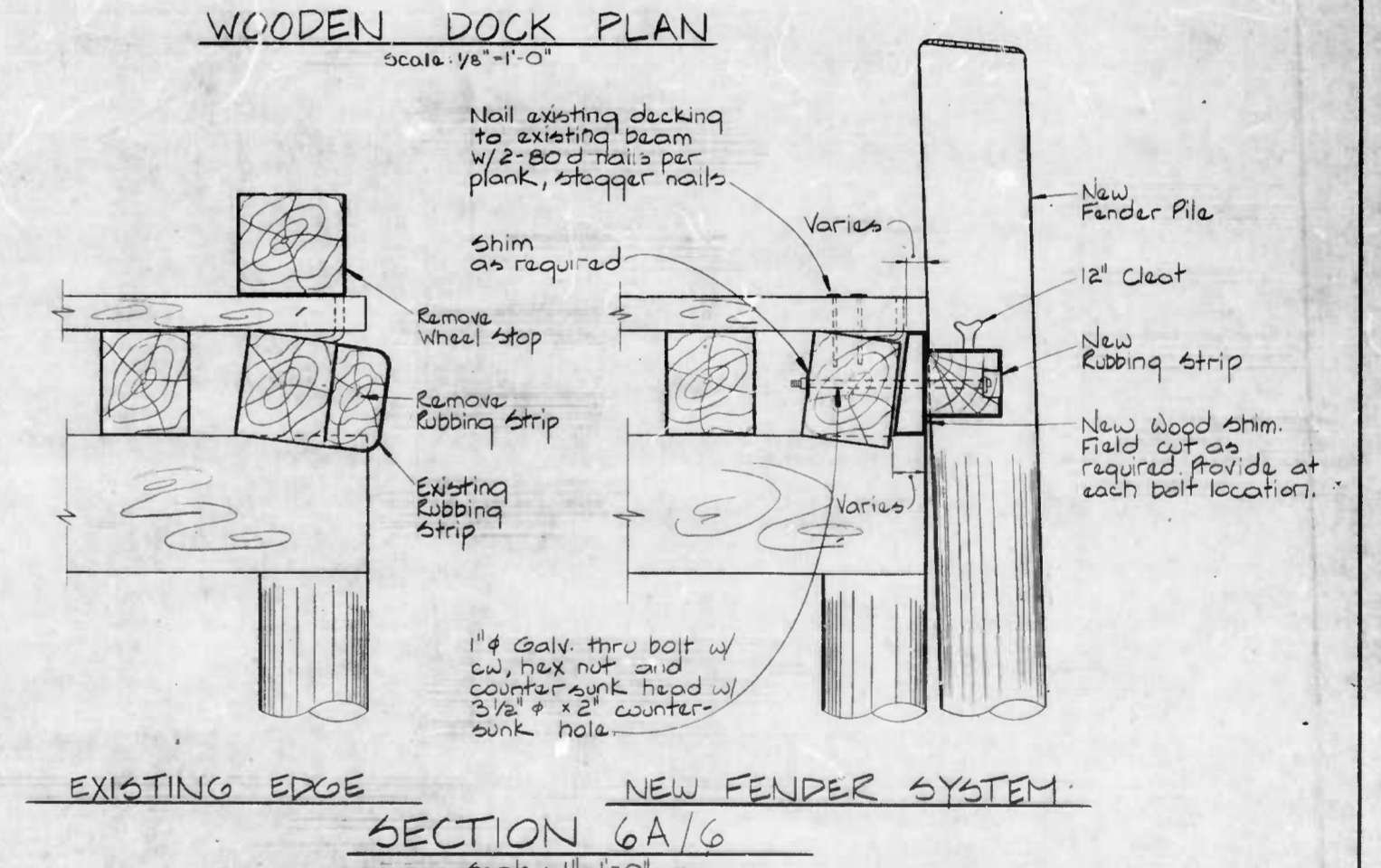
FILE REF.

FILE REF

REVISIONS			
NO.	DESCRIPTION	DATE	BY



Notes:
Expansion bolt location may have to be shifted horizontally or vertically in the field depending upon conditions in the concrete.
Embedment of all expansion bolts within the concrete shall be a minimum of 6".



Note:
Wood shims shall be at least 3'-0" long at the piles (to receive a thru bolt for the pile) and one bolt for each end of the rubbing strips) and shims shall be 1'-0" long of all other bolt locations.

DRAWN BY: *[Signature]*
EXAMINED BY: *[Signature]*

STATE OF MARYLAND
DEPARTMENT OF TRANSPORTATION
PROFESSIONAL ENGINEER

WHITMAN, REQUARDT & ASSOCIATES
ENGINEERS
BALTIMORE, MARYLAND

BY: *[Signature]*

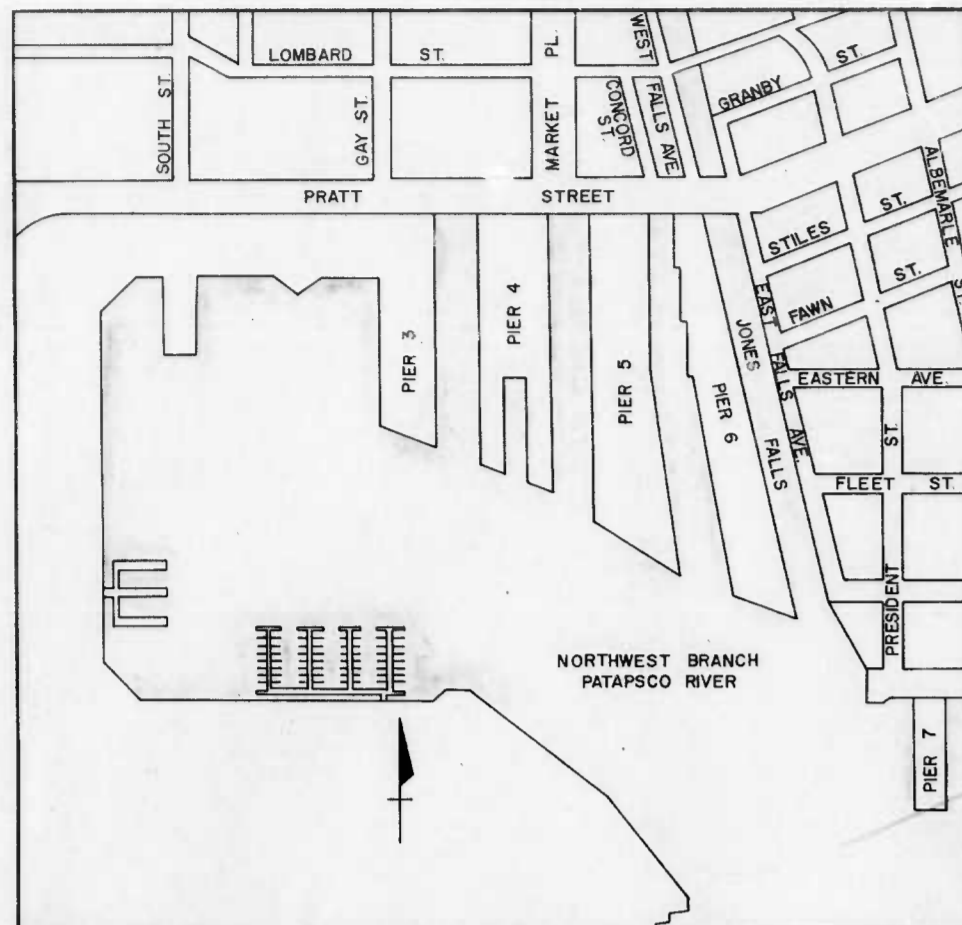
CITY OF BALTIMORE
DEPARTMENT OF PUBLIC WORKS
BUREAU OF HIGHWAYS

CONTRACT NO. 2613
INNER HARBOR EAST
BOAT TAXI DOCKS AND PIER 5
TEMPORARY FENDER SYSTEM

TYPICAL SECTIONS AND DETAILS

SCALE: AS SHOWN
DATE: FEBRUARY, 1980
SHEET 6 OF 6

FILE REF.



LOCATION PLAN
SCALE IN FEET
0 200 400 600 800

CITY OF BALTIMORE
DEPARTMENT OF PUBLIC WORKS
BUREAU OF HIGHWAYS



INDEX OF DRAWINGS

SHEET NO.	TITLE
1 OF 6	TITLE SHEET
2 OF 6	PLAN AND SECTIONS
3 OF 6	MISCELLANEOUS DETAILS
4 OF 6	PLAN
5 OF 6	PLAN AND SECTIONS
6 OF 6	TYPICAL SECTIONS AND DETAILS

CONTRACT NO. 2613

INNER HARBOR EAST
BOAT TAXI DOCKS
AND
PIER 5 TEMPORARY FENDER SYSTEM



WHITMAN, REQUARDT & ASSOCIATES
ENGINEERS
1111 NORTH CHARLES STREET
BALTIMORE, MARYLAND

FEBRUARY, 1980
DATE

Charles F. Reardon
REG NO. 2289