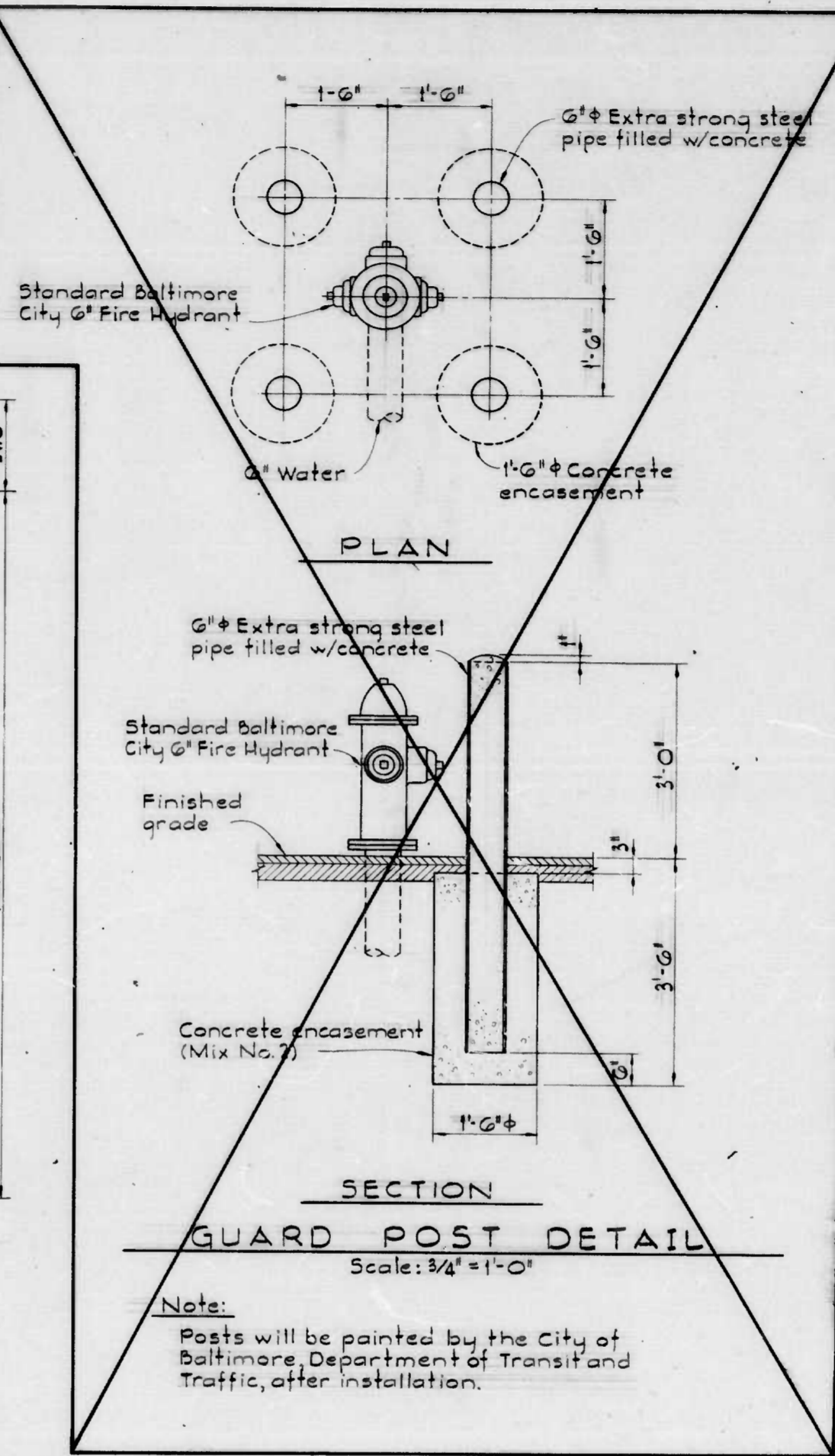
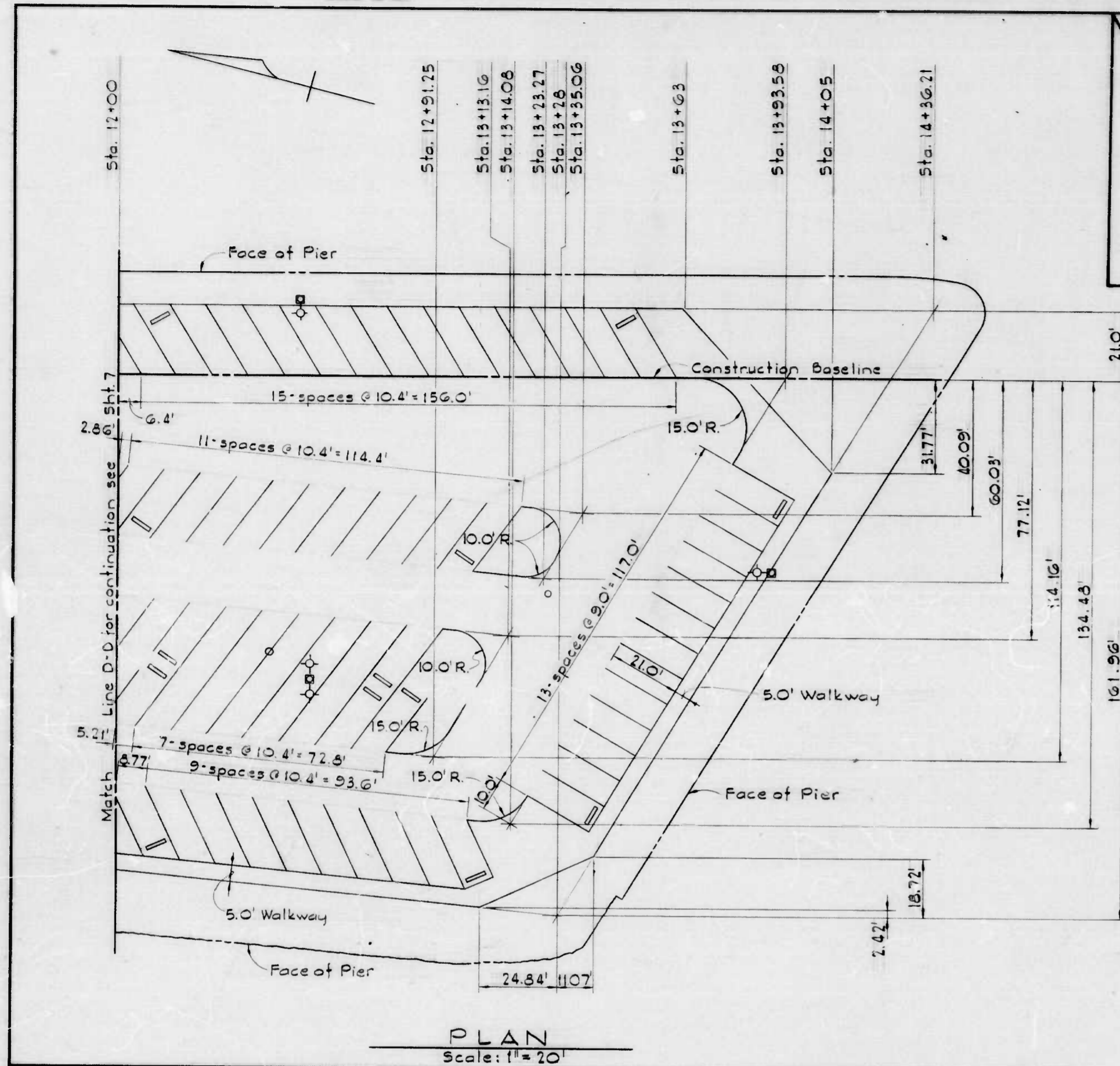
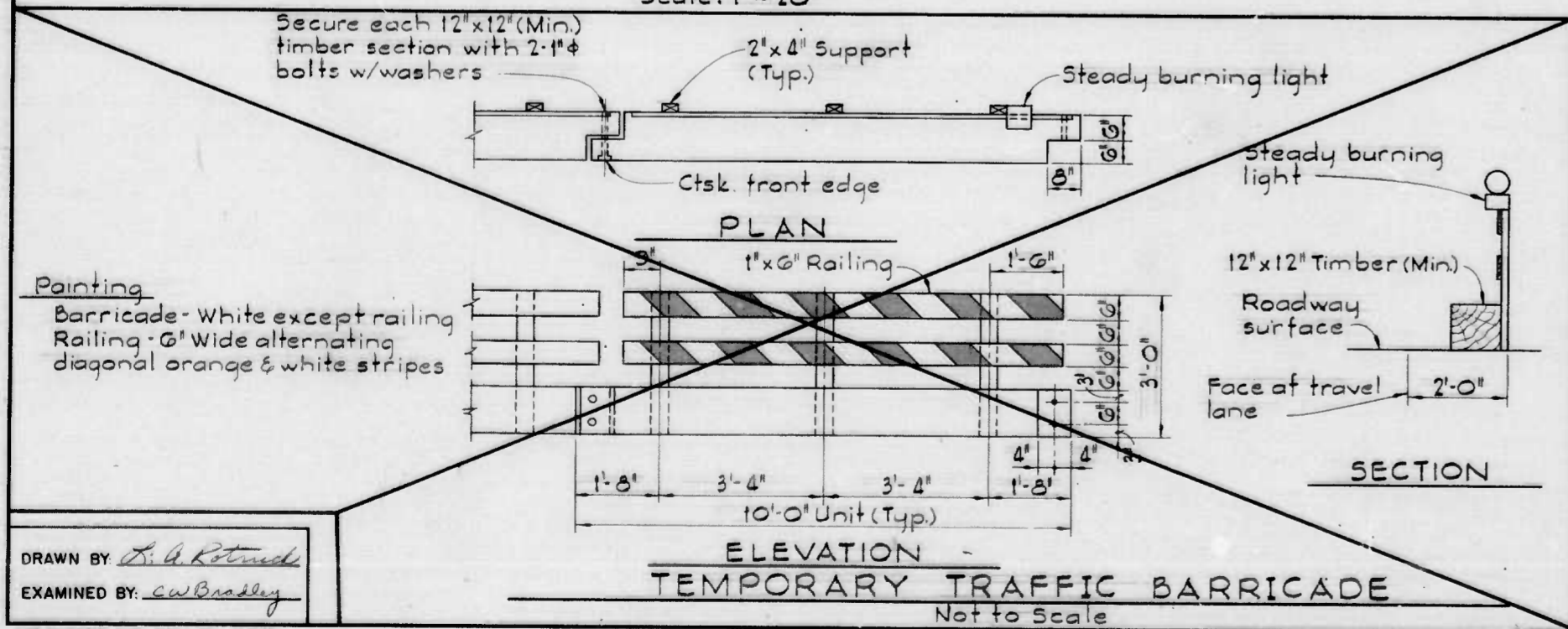


FILE REF.

REVISIONS			
NO.	DESCRIPTION	DATE	BY



Note:  
Posts will be painted by the City of Baltimore, Department of Transit and Traffic, after installation.



DRAWN BY: *R. A. Roberts*  
EXAMINED BY: *ewbradley*

MADE IN BALTIMORE BY THE MERCURELINE CO. W.O. 7430-2

THIS IS NOT A CONTRACT DRAWING

WHITMAN, REQUARDT & ASSOCIATES  
ENGINEERS  
BALTIMORE, MARYLAND

CITY OF BALTIMORE  
DEPARTMENT OF PUBLIC WORKS  
BUREAU OF ENGINEERING

CONTRACT NO. 2541

TEMPORARY PARKING - PIER 6  
INNER HARBOR EAST

PARKING LAYOUT PLAN  
STATION 12+00 TO 14+10

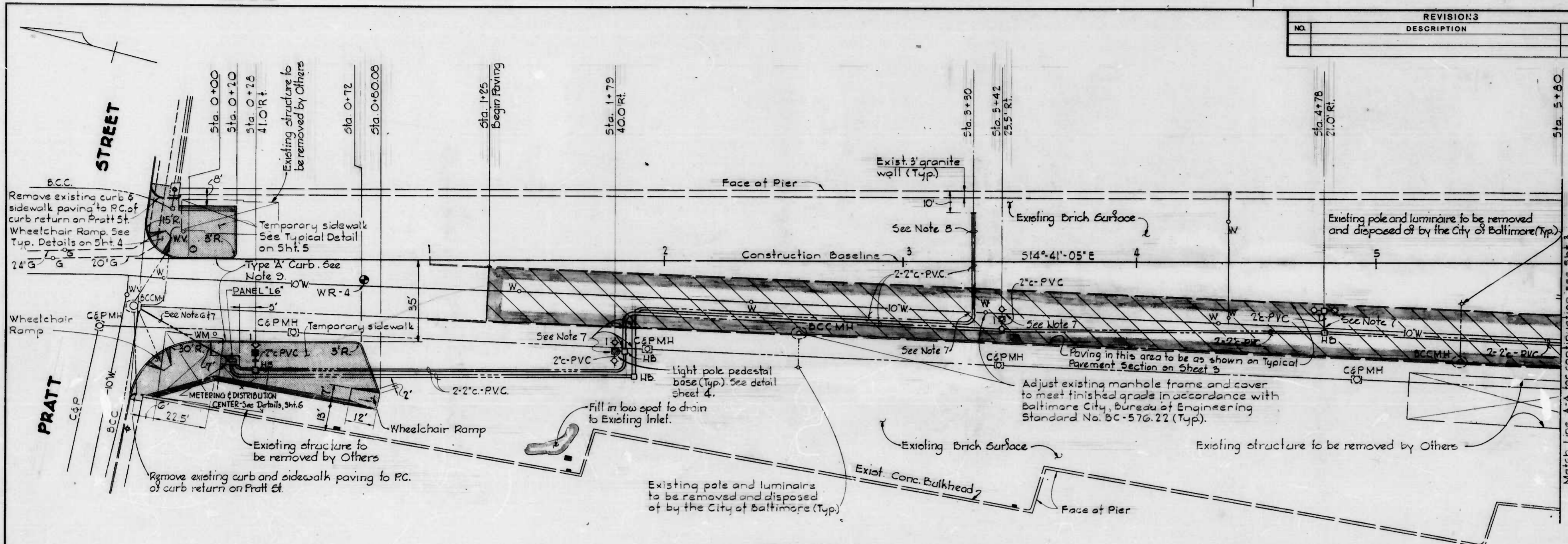
SCALE AS SHOWN DATE: \_\_\_\_\_ SHEET 8 OF 12

FILE REF.



FILE REF.

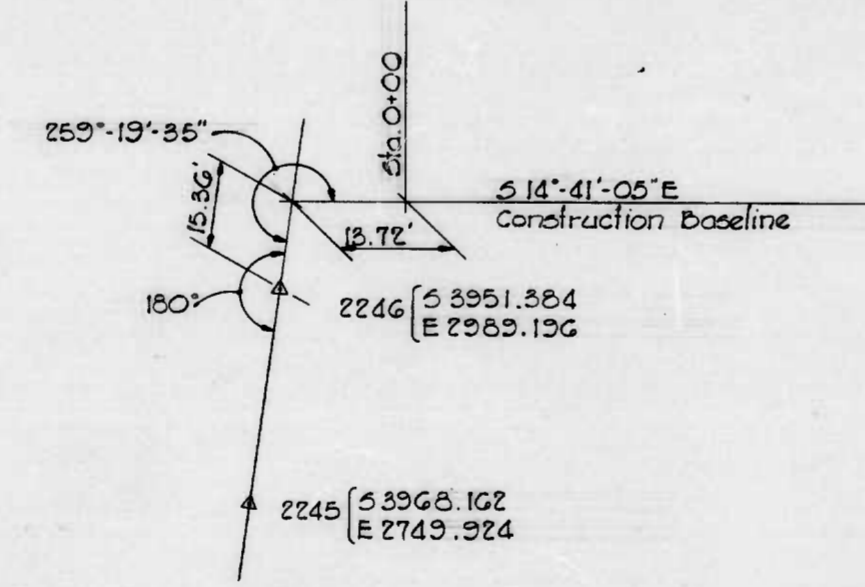
REVISIONS		
NO.	DESCRIPTION	DATE BY



PLAN  
Scale: 1"=20'

**NOTES:**

1. For General Notes see Sheet 4.
2. For Typical Paving Sections see Sheet 3.
3. For Typical Light Pole Pedestal Base see Sheet 4.
4. For electrical details see Sheet 6.
5. Pier 6 is occupied by several existing buildings. These structures will be removed by the City of Baltimore prior to the beginning of construction. These buildings have been identified on these drawings as 'Existing Structure to be removed by Others'. The pier will be cleaned of debris by the City prior to construction of this project.
6. For 3" concrete enclosed conduit, see details Sheet 6.
7. Hand excavate to locate existing utility prior to constructing pedestal base, or providing conduit runs.
8. Contractor shall provide 2-2" PVC conduits including handboxes where indicated; stubbed out and capped beyond the East Edge of Paving.
9. B.C. Type 'A' Curb 7' x 20" in accordance with Baltimore City, Bureau of Engineering Standard No. BC 620.02.



BASELINE TRAVERSE TIE

B.M. 778B Elev. 16.69  
Bronze U.S.C.G. marker in Conc. block, east end Conc. guard wall of S.W. Cor. Pratt St. & East Falls Ave.  
B.M. 778G Elev. 8.67  
"O" Cut in stone door sill, west side 5 S.B. Bldg., northeast Cor. East Falls Ave. & Aliceanna St.

**TRAVERSE NOTES:**

- A. Existing topography, elevations and utilities are based on 'PLAT SHOWING THE PHYSICAL OUTLINE, TOPOGRAPHY AND UTILITIES OF PIER 6 LOCATED ON THE SOUTH SIDE OF PRATT STREET' dated October 27, 1977, prepared by the City of Baltimore, Department of Public Works, Bureau of Engineering, Surveys and Records Division.
- B. The Contractor shall protect all existing Baltimore City Topographic Traverse Points and Bench Marks until the Construction Baseline and Construction Bench Marks are established and referenced by the Contractor.

DRAWN BY: *L.B. R... ..*  
EXAMINED BY: *C.W. Bradley*

W.O. 7430-2

WHITMAN, REQUARDT & ASSOCIATES  
ENGINEERS  
BALTIMORE, MARYLAND

CITY OF BALTIMORE  
DEPARTMENT OF PUBLIC WORKS  
BUREAU OF ENGINEERING

CONTRACT NO. 2541

TEMPORARY PARKING - PIER 6  
INNER HARBOR EAST

PAVING AND UTILITY PLAN  
STATION - 0+25 TO 5+80

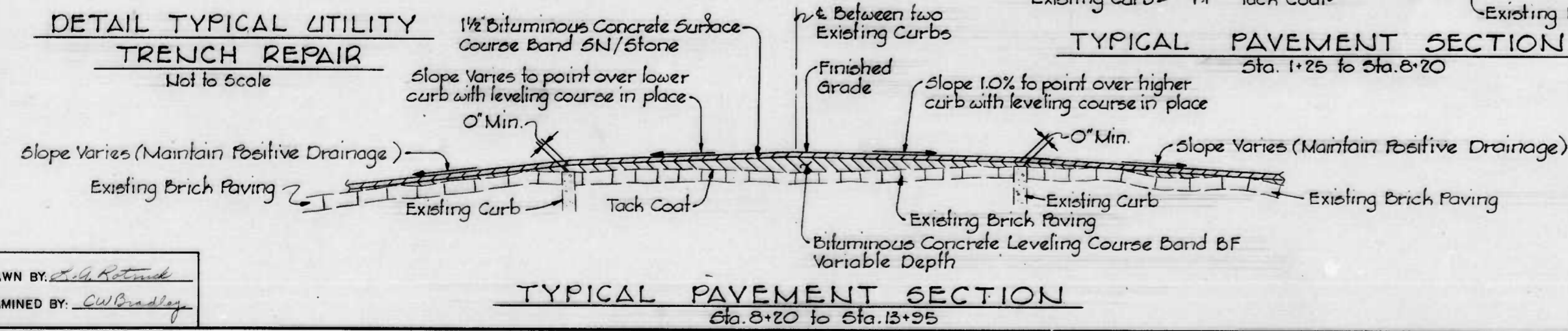
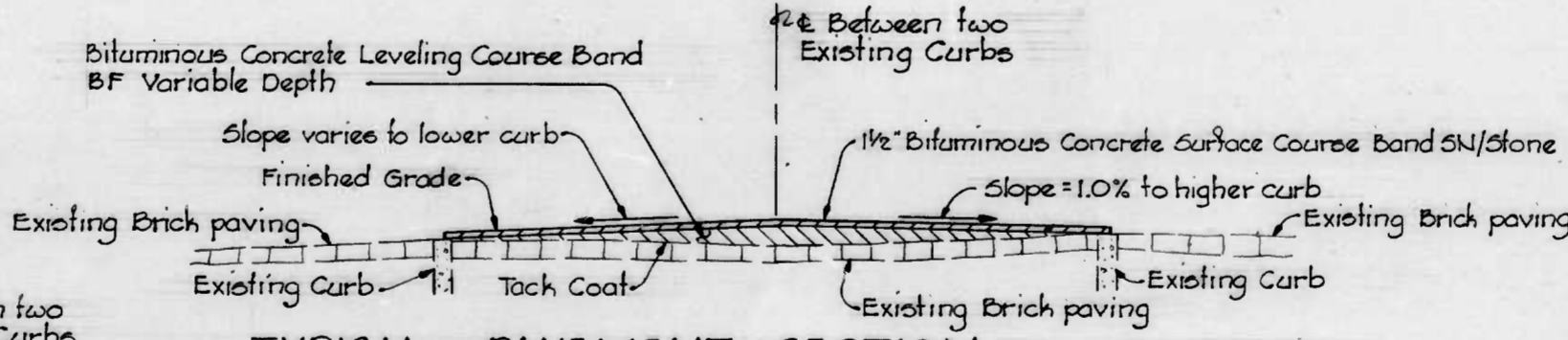
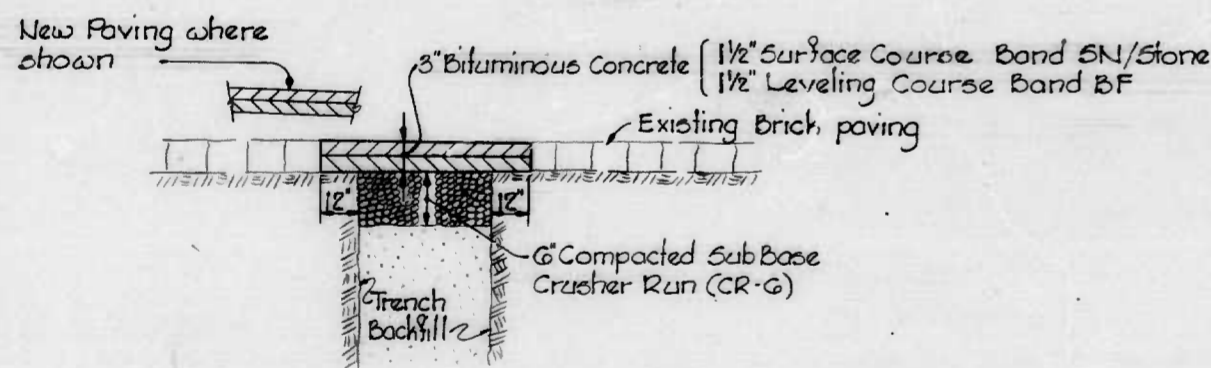
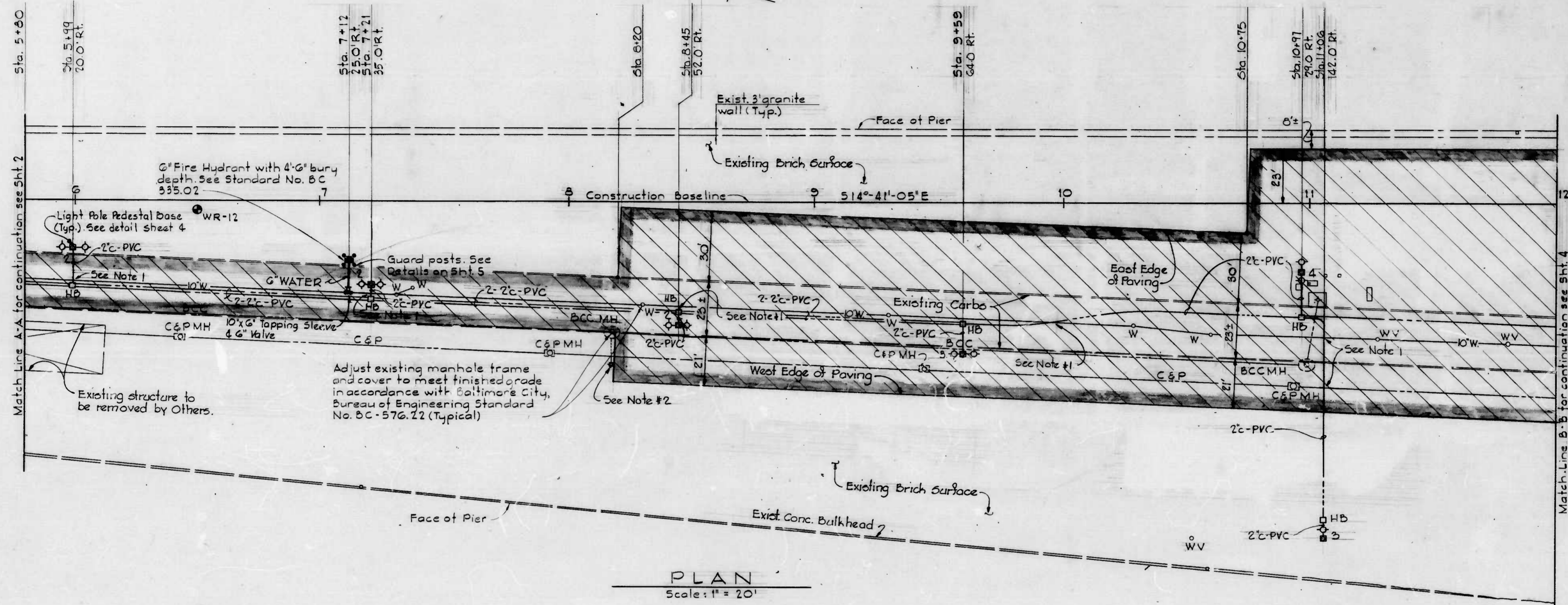
SCALE AS SHOWN DATE: MAY 16, 1979  
SHEET 2 OF 6

FILE REF.



FILE REF.

REVISIONS			
NO.	DESCRIPTION	DATE	BY



- NOTES**
1. Hand excavate to locate existing utility prior to constructing pedestal base or providing conduit runs.
  2. Existing pole & luminaire to be removed & disposed of by the City of Baltimore. Foundations shall be removed to 2' below finished grade under this Contract.

DRAWN BY: *John K. ...*  
 EXAMINED BY: *C.W. Bradley*

WHITMAN, REQUARDT & ASSOCIATES  
 ENGINEERS  
 BALTIMORE, MARYLAND

CITY OF BALTIMORE  
 DEPARTMENT OF PUBLIC WORKS  
 BUREAU OF ENGINEERING  
 CONTRACT NO. 2541  
**TEMPORARY PARKING - PIER 6  
 INNER HARBOR EAST**  
**PAVING AND UTILITY PLAN  
 STATION 5+80 TO 12+00**  
 SCALE AS SHOWN DATE MAY 16, 1979  
 SHEET 3 OF 6

FILE REF.

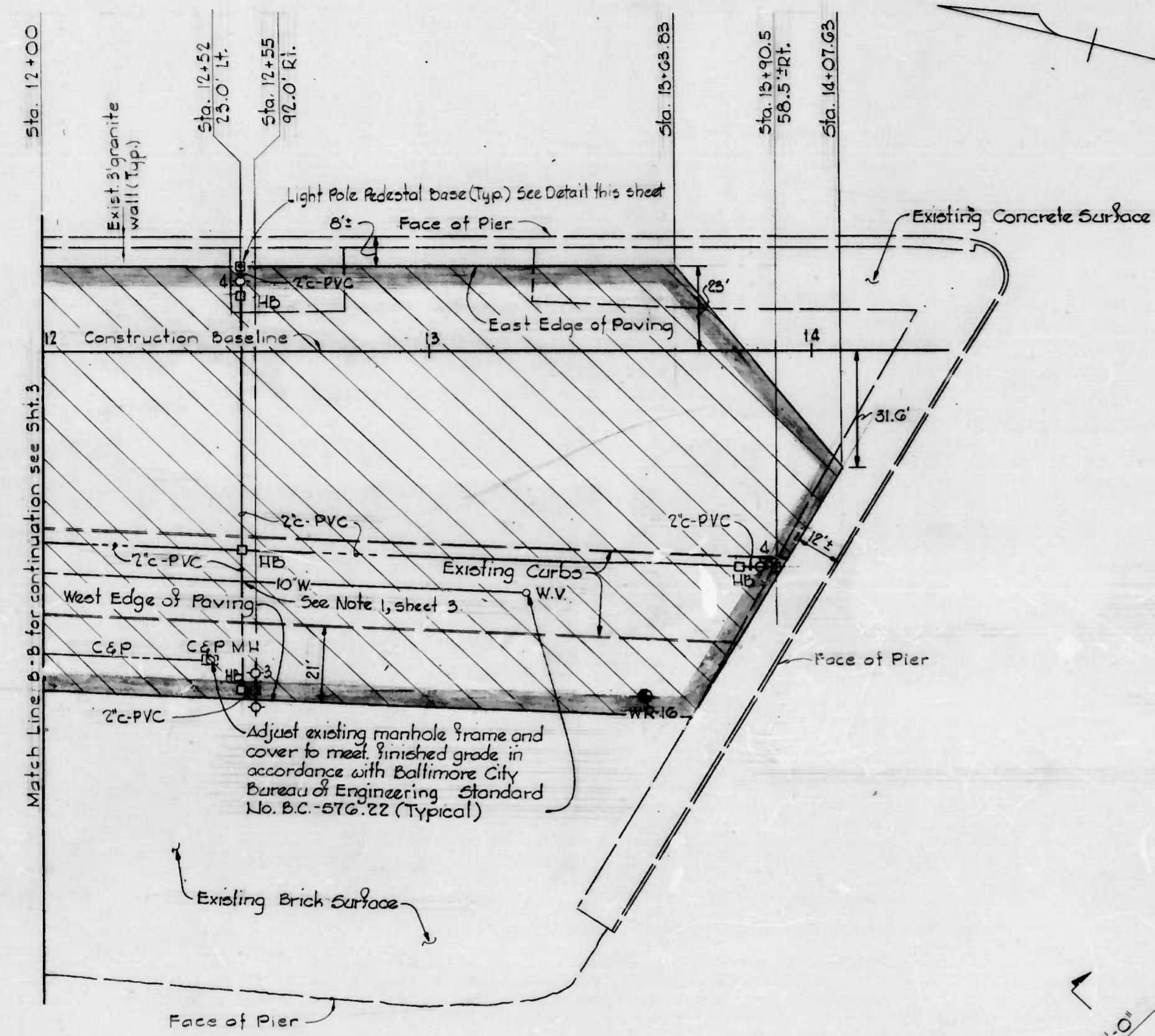


FILE REF.

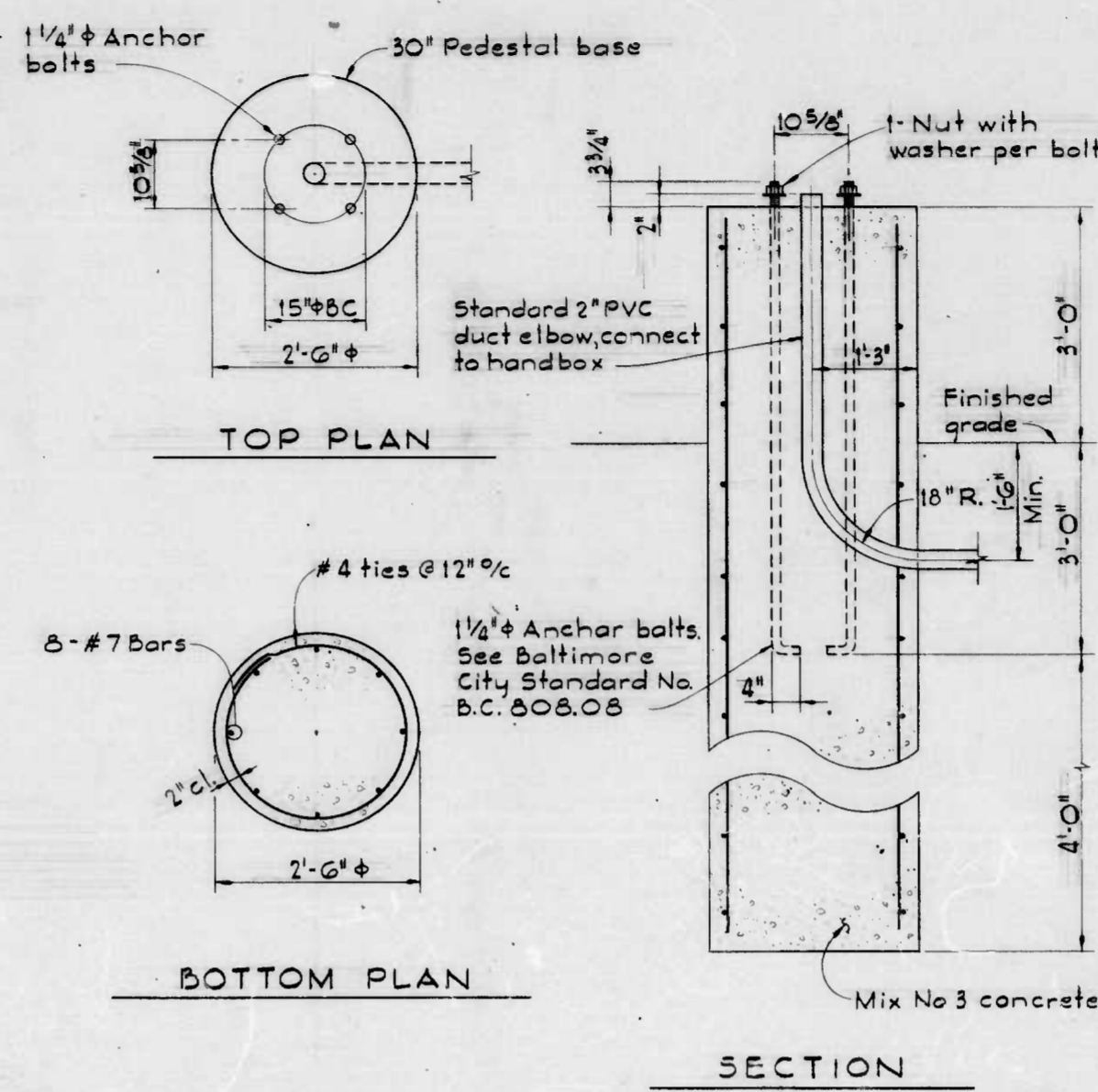
REVISIONS			
NO.	DESCRIPTION	DATE	BY

**GENERAL NOTES**

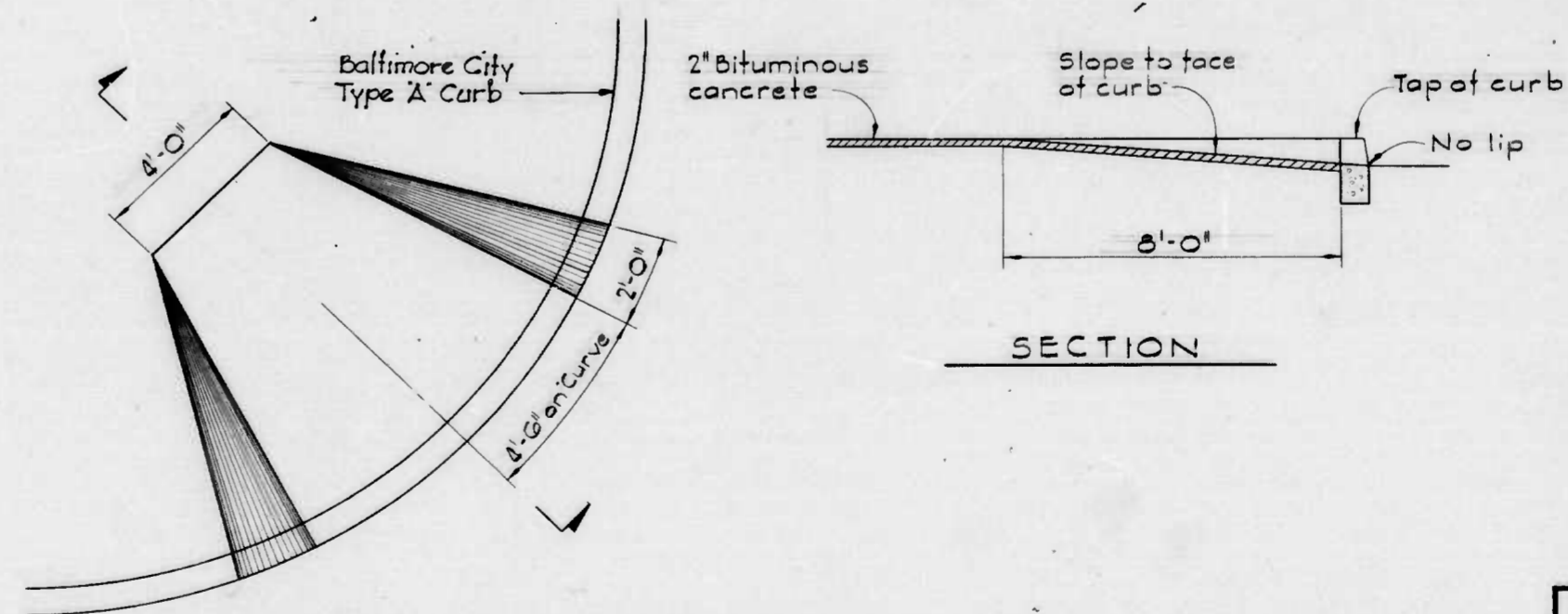
- All utility work shall be done in accordance with the City of Baltimore, Department of Public Works, Bureau of Engineering "BOOK OF STANDARDS" unless otherwise shown on the drawings.
- Existing water valves and hydrants shall be operated by the Bureau of Operations personnel only.
- Existing utilities are shown in accordance with information available as indicated in Note A on Sheet No. 2. The City does not warrant or guarantee the correctness or the completeness of the information shown. The Contractor shall verify all such information to his own satisfaction before working in the area of existing utilities.
- Notify the Bureau of Operations at 396-0320 at least three (3) days before starting work.
- Notify "MISS UTILITY" at 559-0100 at least three (3) days prior to starting work, stating: (1) Nature of work, (2) Location of job and Contract Number, and (3) Time and Date for starting work so that The Baltimore Gas and Electric Company can mark its facilities.
- The Contractor shall observe extreme caution when working over or near existing water facilities.
- All handboxes indicated  $\square$  HB shall be in accordance with Baltimore City, Dept. of Public Works, Bureau of Engineering Standards No. BC-804.01 thru BC-804.06.
- See sheet G for electrical details.
- The Contractor shall notify the Conduit Division, City of Baltimore, at least 14 days prior to the requirement for removal of existing street lights.



**PLAN**  
Scale: 1" = 20'



**TYPICAL LIGHT POLE PEDESTAL BASE**  
Scale: 3/4" = 1'-0"



**TYPICAL WHEELCHAIR RAMP DETAILS**  
Not to Scale

DRAWN BY: *S. J. Retford*  
EXAMINED BY: *C. W. Bradley*

W. O. 7430-2

WHITMAN, REQUARDT & ASSOCIATES  
ENGINEERS  
BALTIMORE, MARYLAND

CITY OF BALTIMORE  
DEPARTMENT OF PUBLIC WORKS  
BUREAU OF ENGINEERING

CONTRACT NO. 2541

TEMPORARY PARKING - PIER 6  
INNER HARBOR EAST

**PAVING AND UTILITY PLAN**  
STATION 12+00 TO 14+10

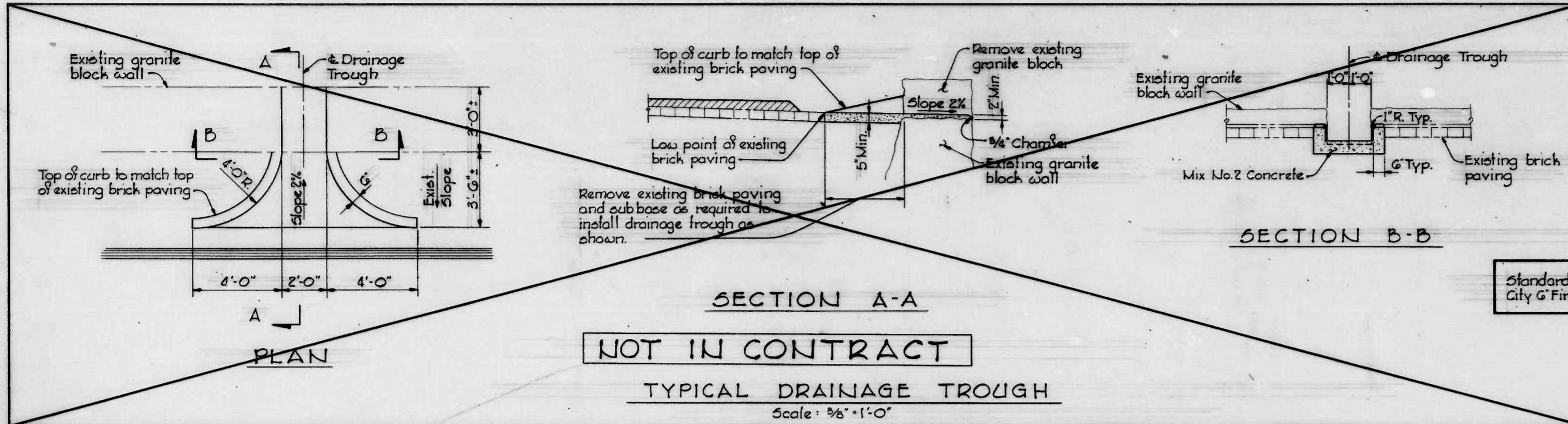
SCALE AS SHOWN DATE MAY 16, 1979  
SHEET 4 OF 6

FILE REF.



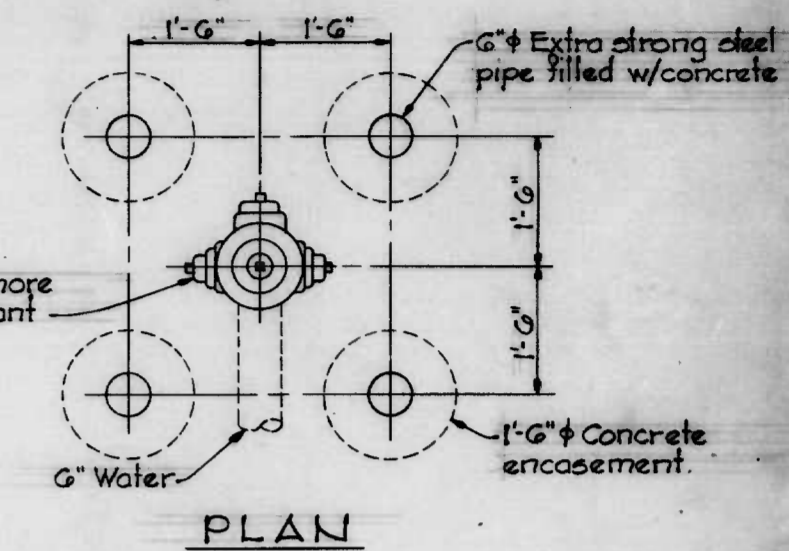
FILE REF.

REVISIONS			
NO.	DESCRIPTION	DATE	BY

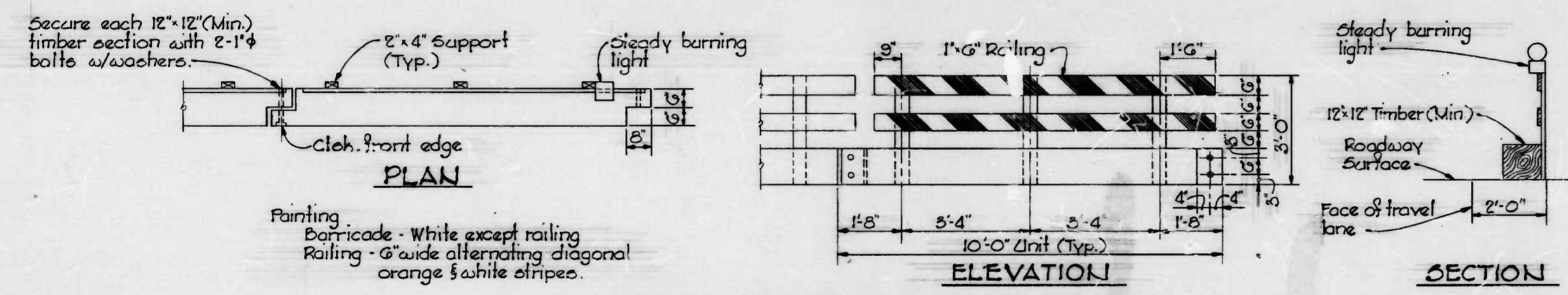


**NOT IN CONTRACT**

**TYPICAL DRAINAGE TROUGH**  
Scale: 3/8" = 1'-0"

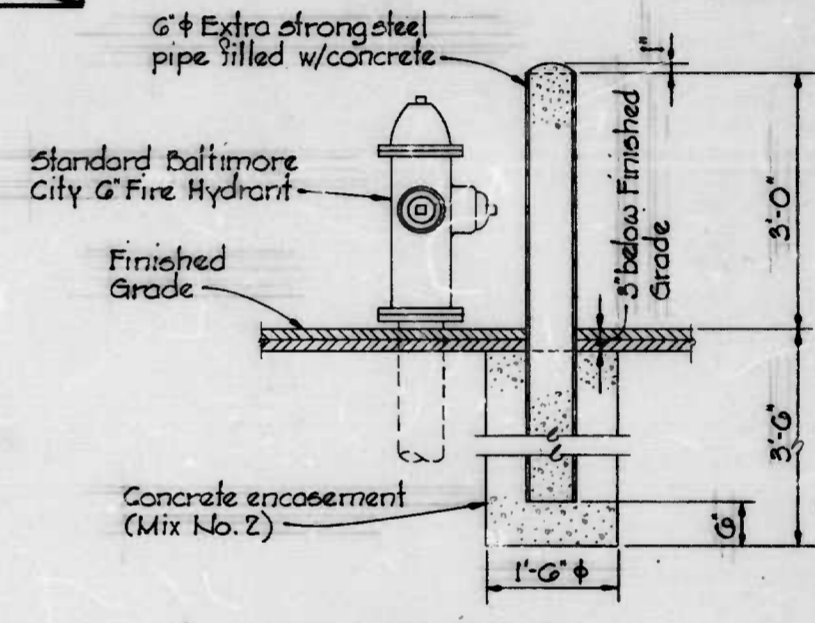


**PLAN**



**TEMPORARY TRAFFIC BARRICADE**  
Not to Scale

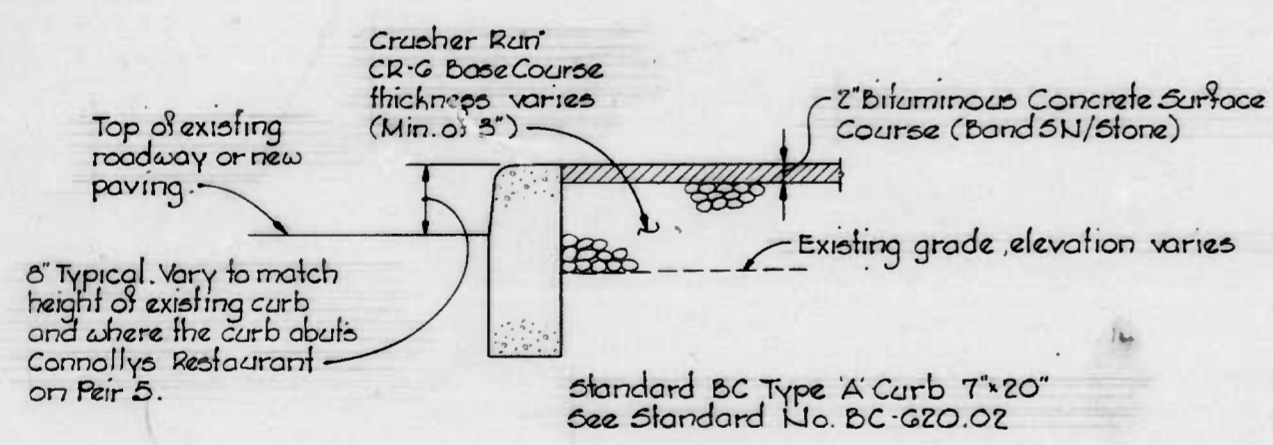
This Barricade to be used to protect any work within Pratt Street R/W.



**SECTION**

Note: Posts will be painted by the City of Baltimore, Department of Transit and Traffic, after installation.

**GUARD POST DETAIL**  
Scale: 3/4" = 1'-0"



**TYPICAL DETAIL**  
**TEMPORARY SIDEWALK**  
Not to Scale

DRAWN BY: \_\_\_\_\_  
EXAMINED BY: \_\_\_\_\_

W.O. 7430-2

WHITMAN, REQUARDT & ASSOCIATES  
ENGINEERS  
BALTIMORE, MARYLAND

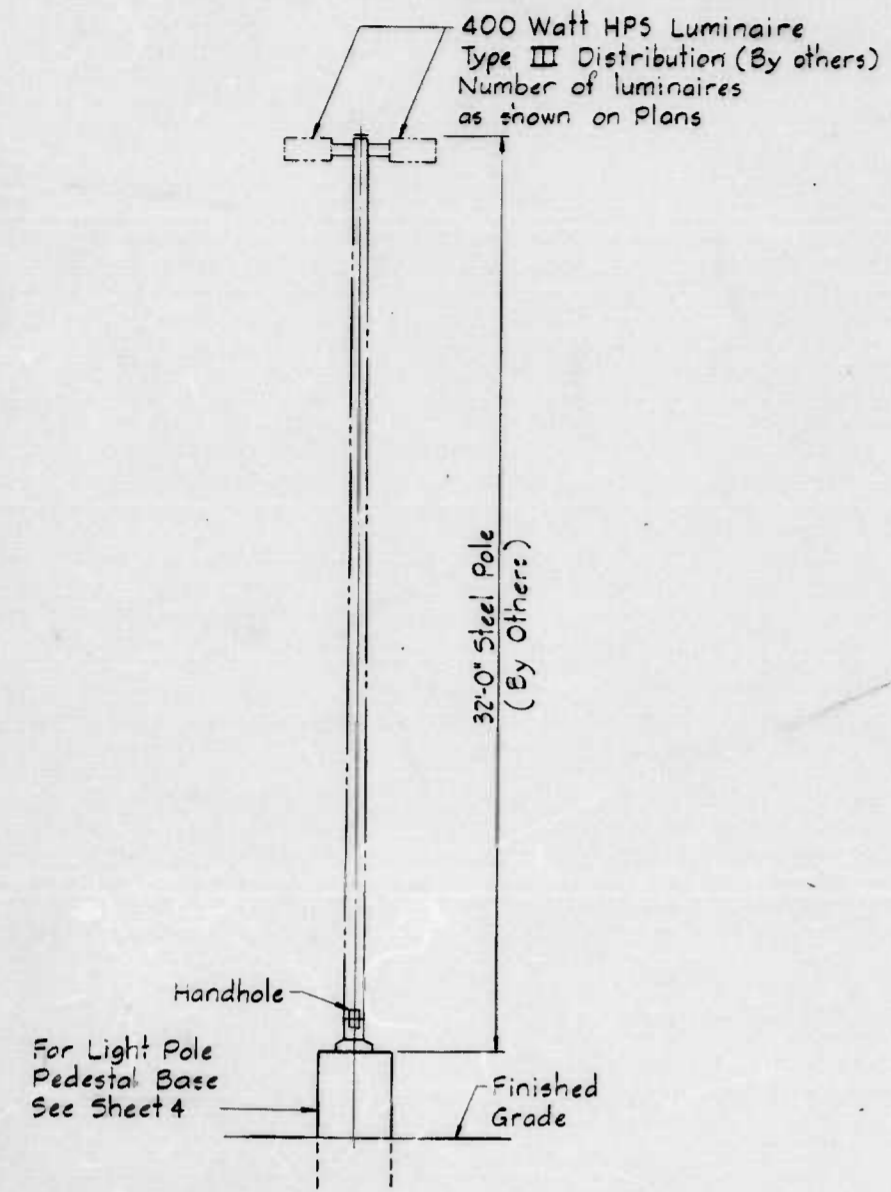
CITY OF BALTIMORE  
DEPARTMENT OF PUBLIC WORKS  
BUREAU OF ENGINEERING  
CONTRACT NO. 2541  
**TEMPORARY PARKING - PIER 6  
INNER HARBOR EAST**  
**TYPICAL DETAILS**  
SCALE AS SHOWN DATE: MAY 16, 1979  
SHEET 5 OF 6

FILE REF.

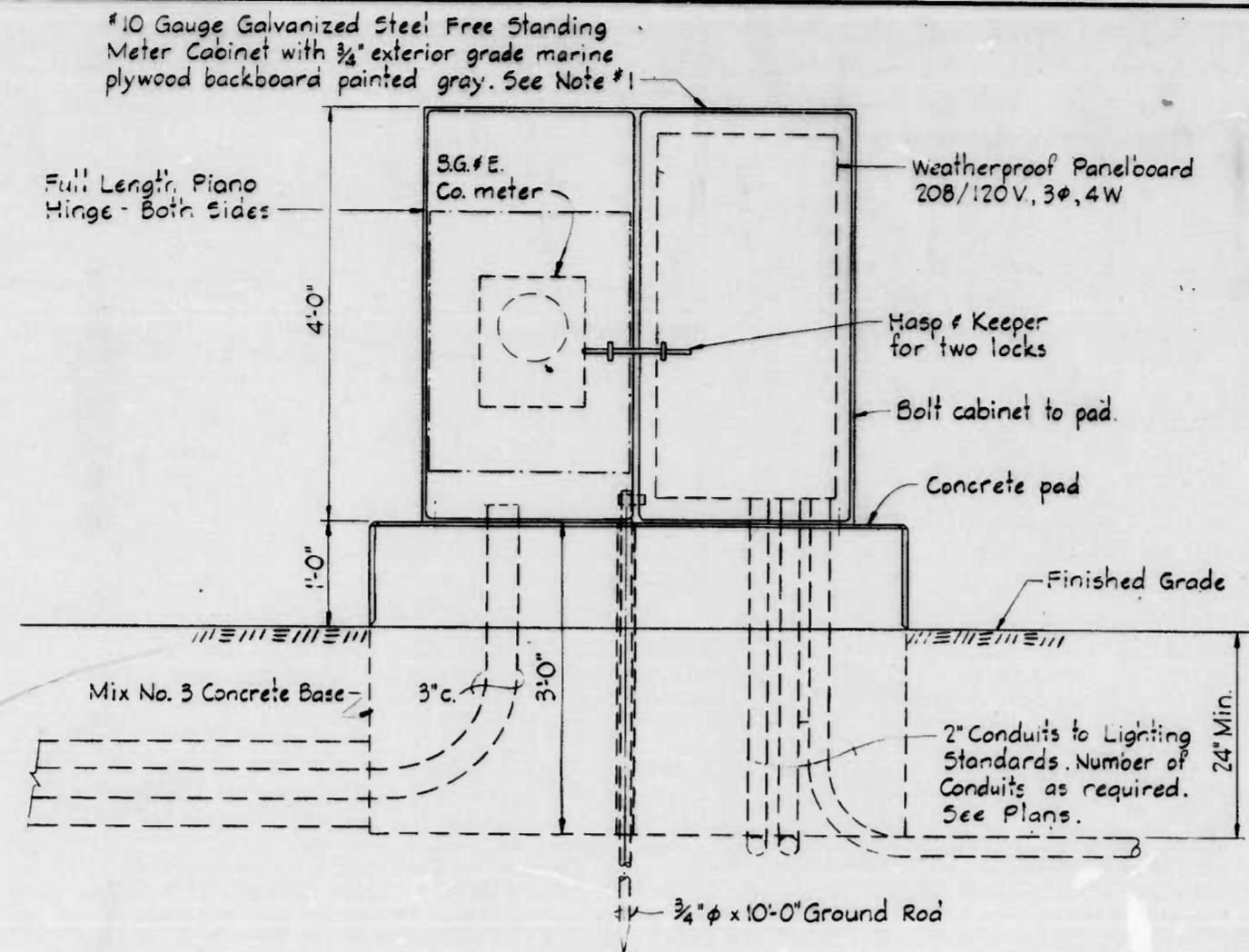


FILE REF.

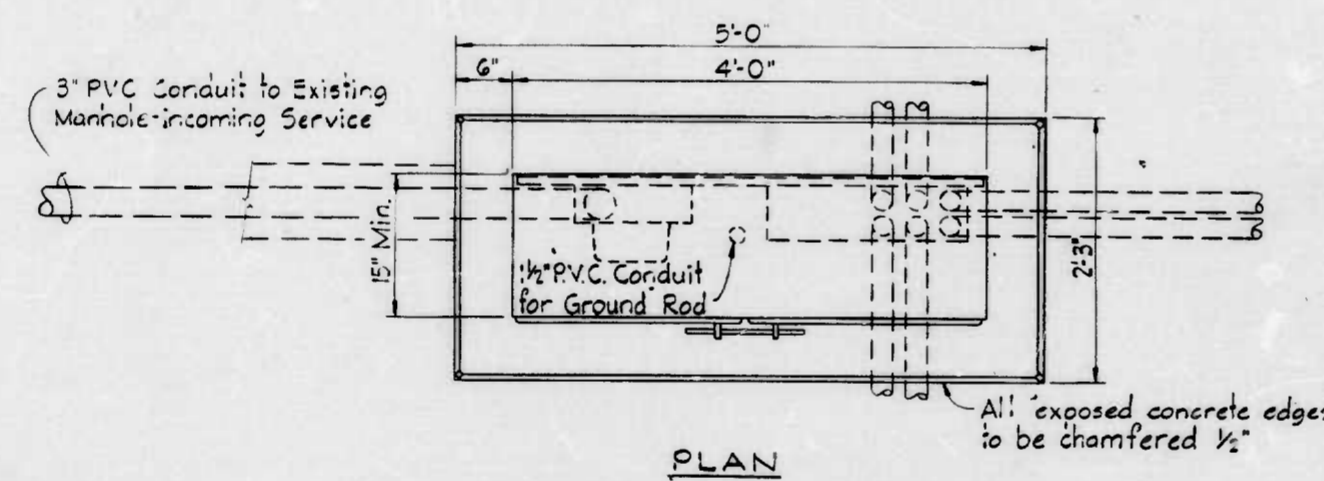
REVISIONS			
NO.	DESCRIPTION	DATE	BY



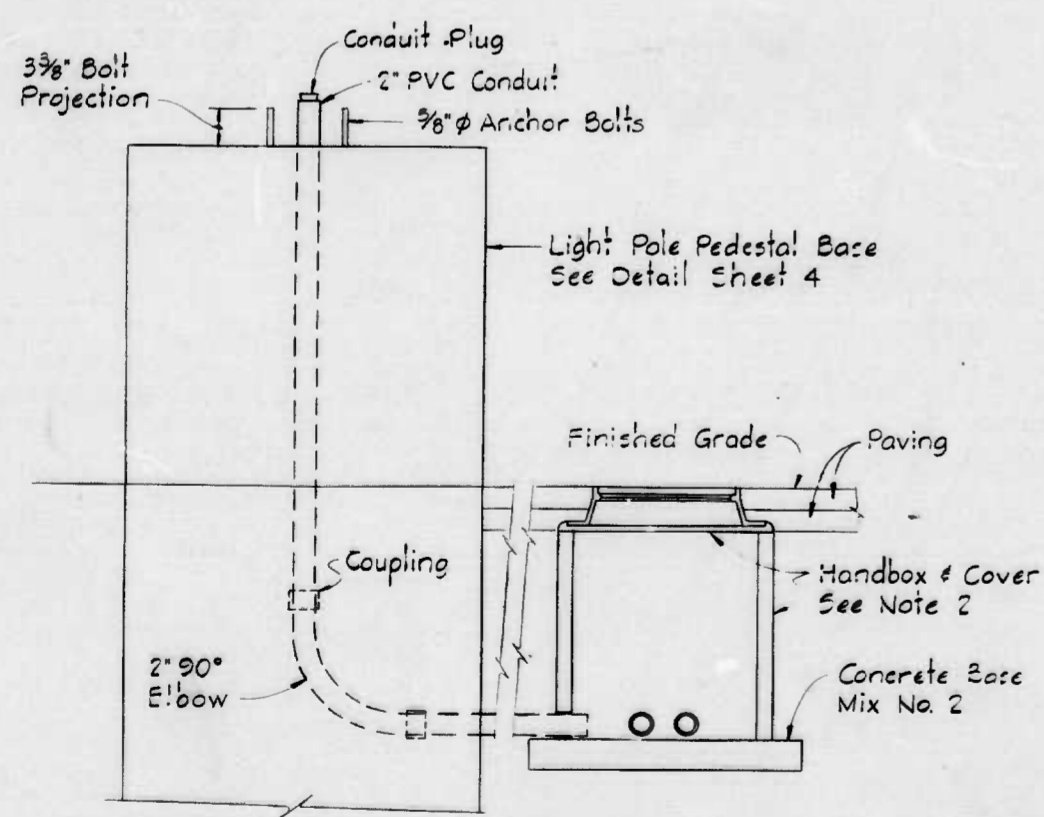
TYPICAL LIGHTING STANDARD  
No Scale



ELEVATION

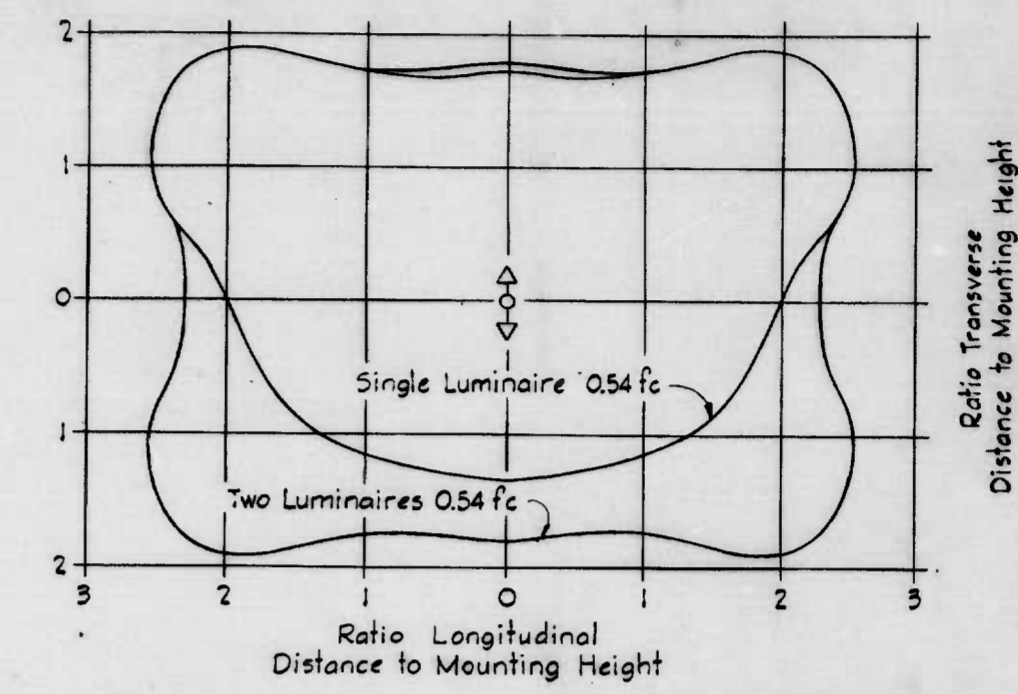


PLAN  
METERING & DISTRIBUTION CENTER

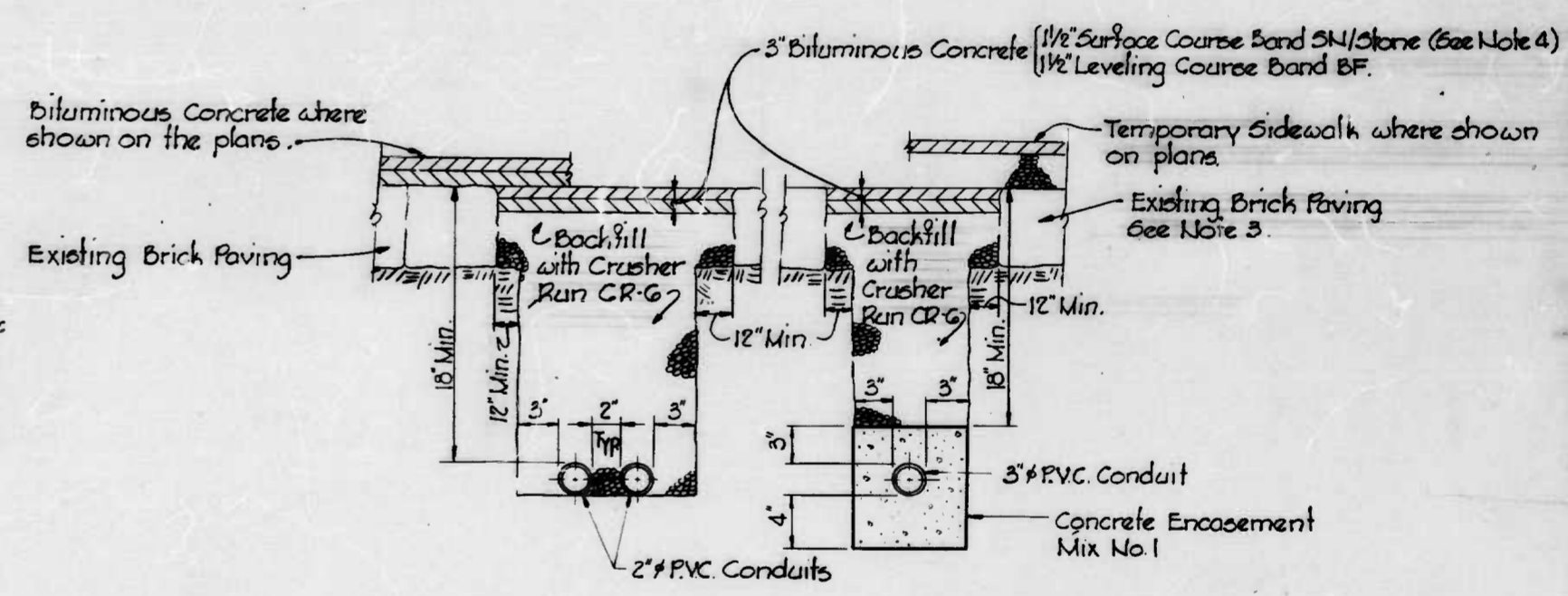


SECTION - HANDBOX  
No Scale

- NOTES:**
1. Meter Cabinet shall be in accordance with Baltimore Gas & Electric Co. Standards Electric Meter & Equipment Enclosure.
  2. Handbox and cover shall be in accordance with Baltimore City Dept. of Public Works & Bureau of Engineering Standards No. BC-804.01, modified as required and No. BC-804.03 thru BC-804.08.
  3. Where trench extends into Pratt Street the trench shall be repaired in accordance with the appropriate Baltimore City Standard Detail for Street Cut & Repair. BC-576.18, BC-576.19 or BC-576.20.
  4. Where pavement patch is to be covered by either Temporary Sidewalk or Bituminous Concrete Paving as shown on the plans then the patch shall be Bituminous Concrete Band BF for the full 3 inch depth.



ASYMMETRICAL - TYPE III DISTRIBUTION  
400 WATT HIGH PRESSURE SODIUM (By others)  
MINIMUM ISOCANDLE CURVE  
No Scale  
Curves are drawn for a 35 ft. mounting height



2" LIGHTING DISTRIBUTION CONDUITS  
3" POWER SUPPLY CONDUIT  
From Existing Baltimore City Conduit Manhole to Metering & Distribution Center  
TYPICAL CONDUIT SECTIONS  
No Scale

DRAWN BY *E. L. Lantz*  
EXAMINED BY *W. H. Miller*

W.O. 7430-2

WHITMAN, REQUARDT & ASSOCIATES  
ENGINEERS  
BALTIMORE MARYLAND

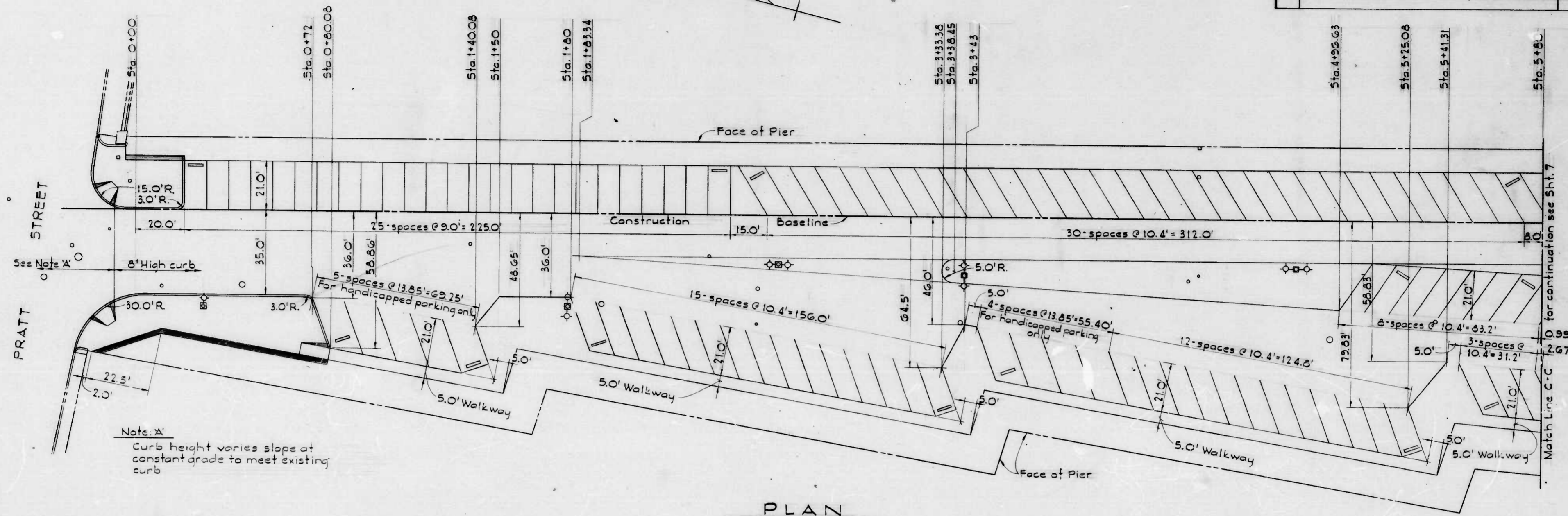
CITY OF BALTIMORE  
DEPARTMENT OF PUBLIC WORKS  
BUREAU OF ENGINEERING  
CONTRACT NO. 2541  
TEMPORARY PARKING - PIER 6  
INNER HARBOR EAST  
ELECTRICAL DETAILS  
SCALE AS SHOWN  
DATE MAY 16, 1979  
SHEET 6 OF 6

FILE REF.



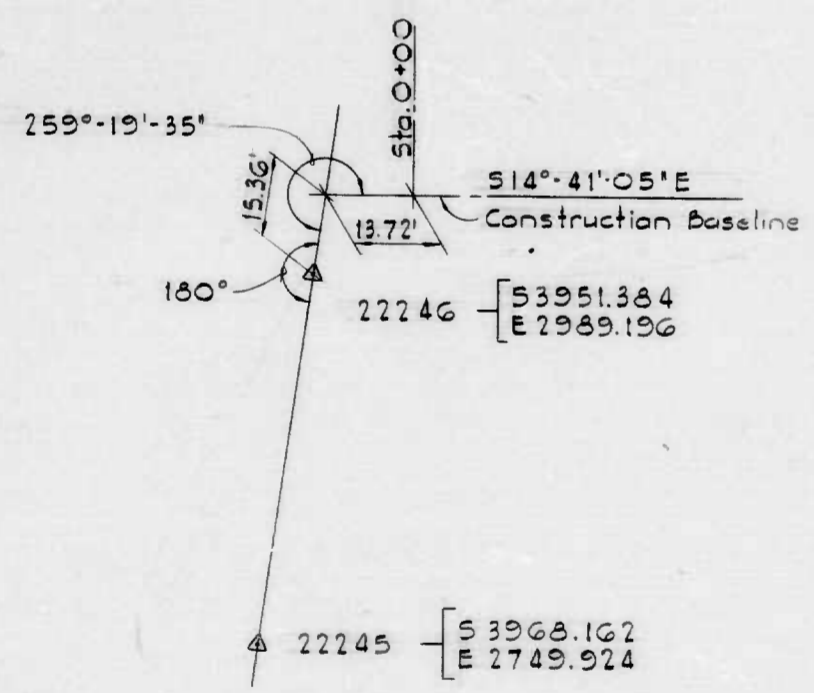
FILE REF.

REVISIONS			
NO.	DESCRIPTION	DATE	BY



Note A  
Curb height varies slope at constant grade to meet existing curb

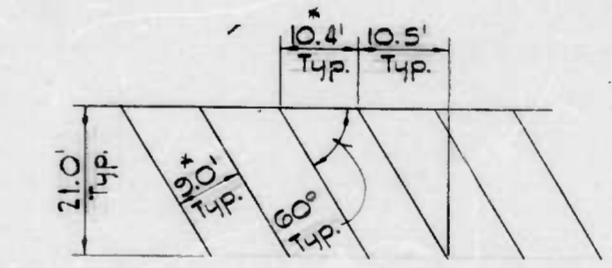
PLAN  
Scale: 1" = 20'



BASELINE TRAVERSE TIE

B.M. 7788 Elev. 16.69  
Bronze U.S.C.G. marker in Conc. block, east end  
Conc. guard wall at S.W. Cor. Pratt St & East Falls Ave.  
B.M. 7786 Elev. 8.67  
Cut in stone door sill, west side S.S.B. Bldg., northeast  
Cor. East Falls Ave & Aliceanna St.

- Notes:
- Existing topography, elevations and utilities are based on "PLAT SHOWING THE PHYSICAL OUTLINE, TOPOGRAPHY AND UTILITIES OF PIER 6 LOCATED ON THE SOUTH SIDE OF PRATT STREET" dated October 27, 1977, prepared by the City of Baltimore, Department of Public Works, Bureau of Engineering, Surveys and Records Division.
  - The Contractor shall protect all existing Baltimore City Topographic Traverse Points and Bench Marks until the Construction Baseline and Construction Bench Marks are established and referenced by the Contractor.
  - For Surface Painting Layout see Sheets 9, 10 and 11. Space delineation not shown will be by the City of Baltimore, Department of Transit and Traffic.
  - Wheel chocks will be supplied and installed by the City of Baltimore, Department of Transit and Traffic.



Note:  
Dimensions with an asterisk (\*) are different for handicapped parking.

TYPICAL ANGLE PARKING SPACE

THIS IS NOT A CONTRACT DRAWING

DRAWN BY: *[Signature]*  
EXAMINED BY: *[Signature]*

WHITMAN, REQUARDT & ASSOCIATES  
ENGINEERS  
BALTIMORE, MARYLAND

CITY OF BALTIMORE  
DEPARTMENT OF PUBLIC WORKS  
BUREAU OF ENGINEERING

CONTRACT NO. 2541

TEMPORARY PARKING - PIER 6  
INNER HARBOR EAST

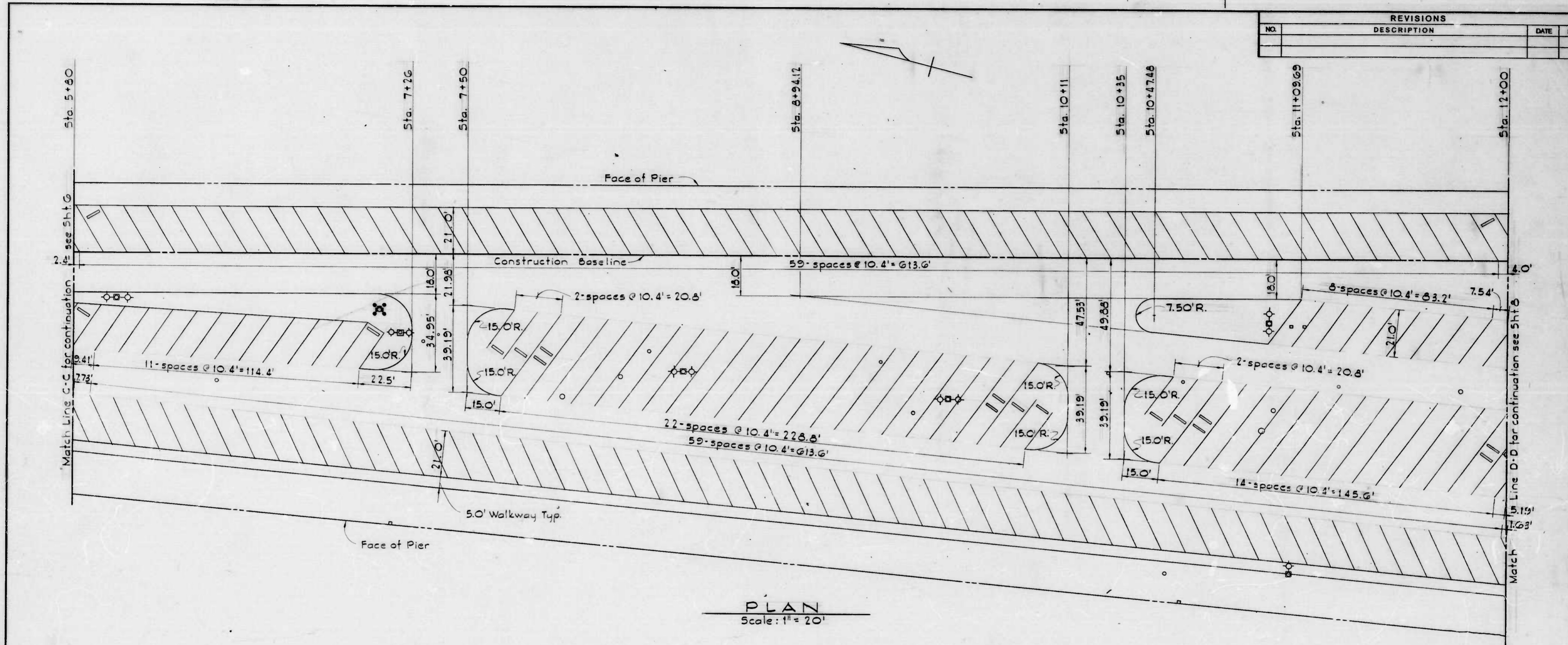
PARKING LAYOUT PLAN  
STATION - 0+25 TO 5+80

SCALE AS SHOWN DATE: \_\_\_\_\_

SHEET 6 OF 12



FILE REF.



PLAN  
Scale: 1" = 20'

REVISIONS			
NO.	DESCRIPTION	DATE	BY

THIS IS NOT A  
CONTRACT DRAWING

DRAWN BY: *Z.A. Retund*  
EXAMINED BY: *C.W. Bradley*

W.O. 7430-2

WHITMAN, REQUARDT & ASSOCIATES  
ENGINEERS  
BALTIMORE, MARYLAND

CITY OF BALTIMORE  
DEPARTMENT OF PUBLIC WORKS  
BUREAU OF ENGINEERING

CONTRACT NO. 2541

TEMPORARY PARKING - PIER 6  
INNER HARBOR EAST

PARKING LAYOUT PLAN  
STATION 5+80 TO 12+00

SCALE AS SHOWN      DATE

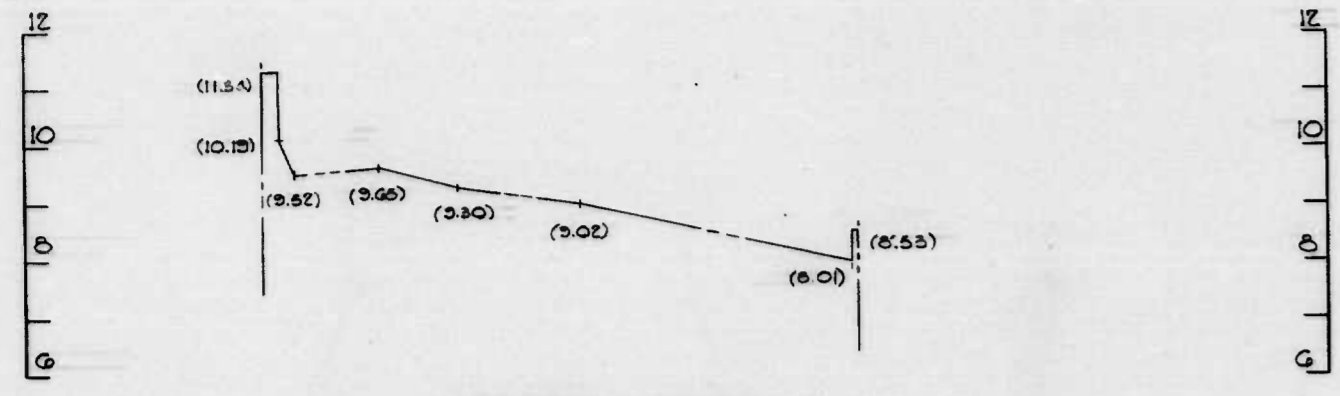
SHEET 7 OF 12

FILE REF.

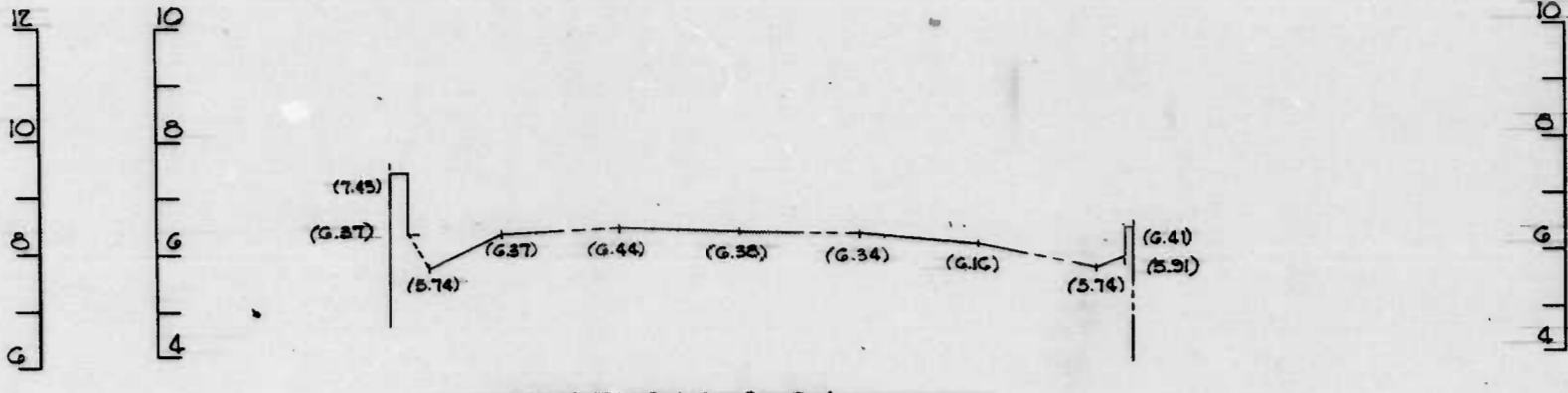


FILE REF.

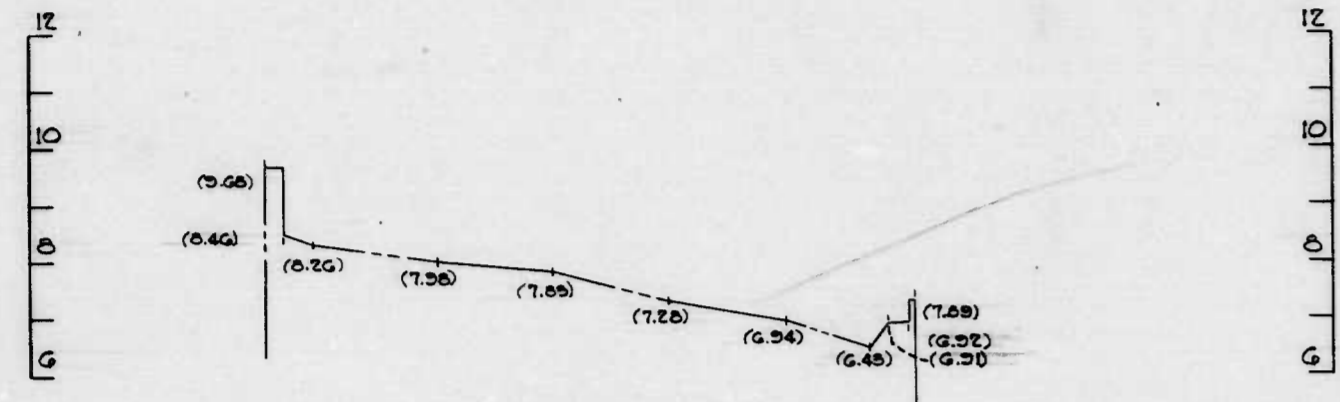
REVISIONS			
NO.	DESCRIPTION	DATE	BY



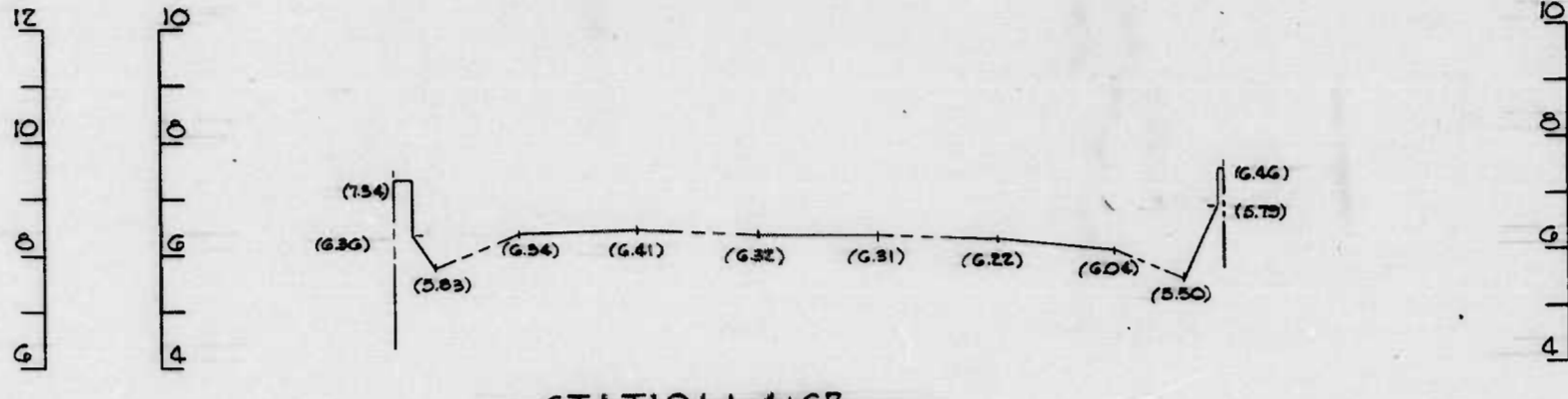
STATION 0+86



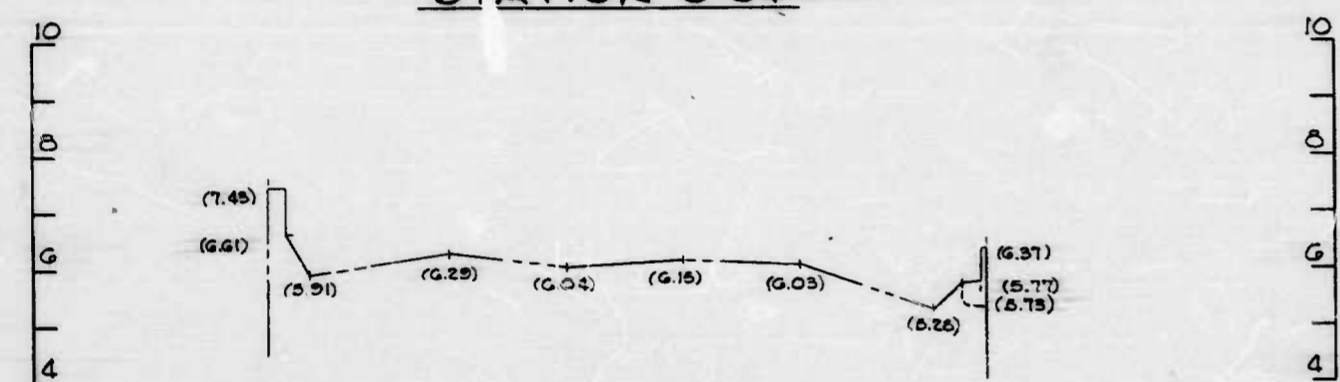
STATION 3+84



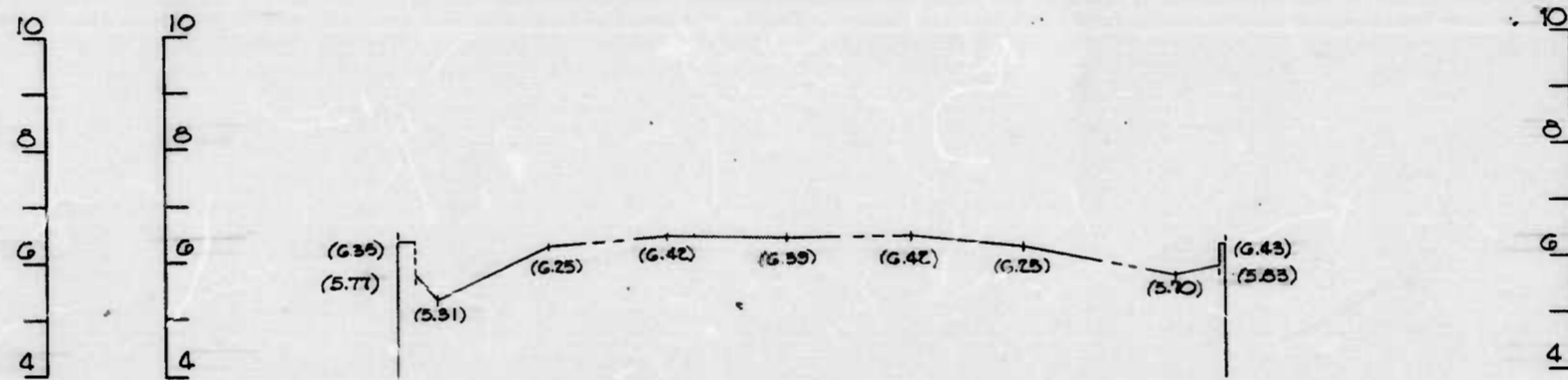
STATION 0+84



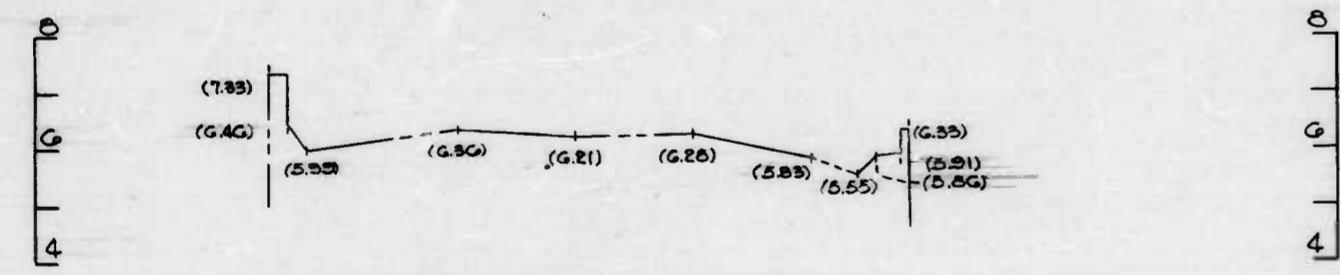
STATION 4+67



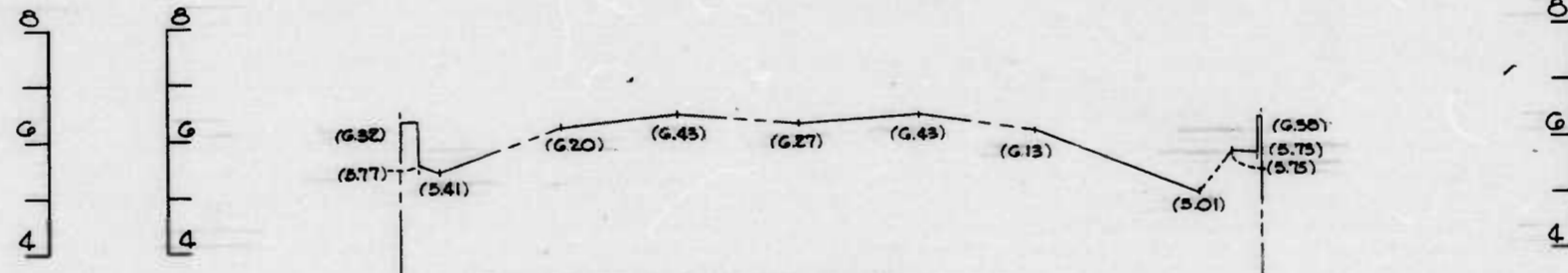
STATION 1+44



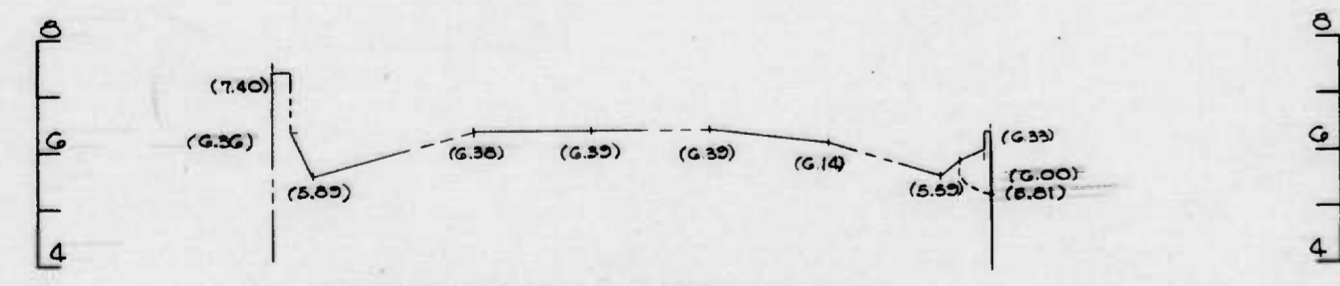
STATION 5+92



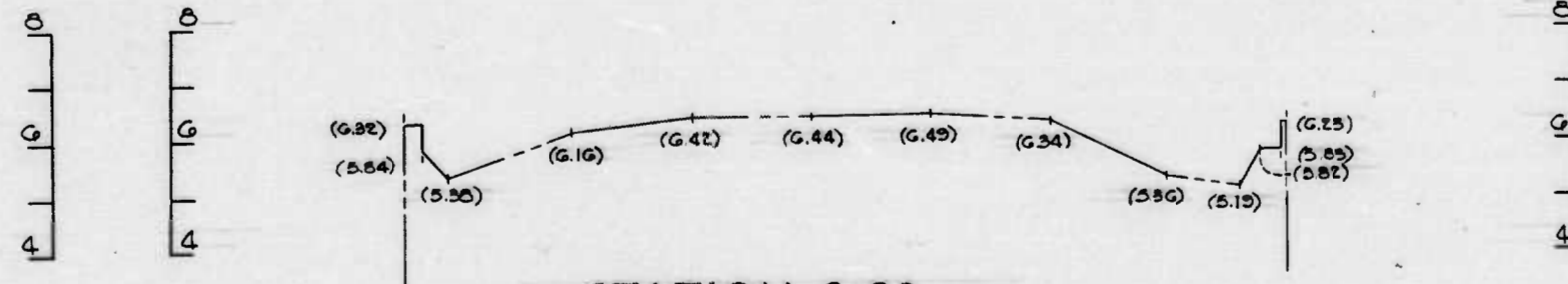
STATION 1+84



STATION 6+43



STATION 2+53



STATION 6+89

CITY OF BALTIMORE  
DEPARTMENT OF PUBLIC WORKS  
BUREAU OF ENGINEERING

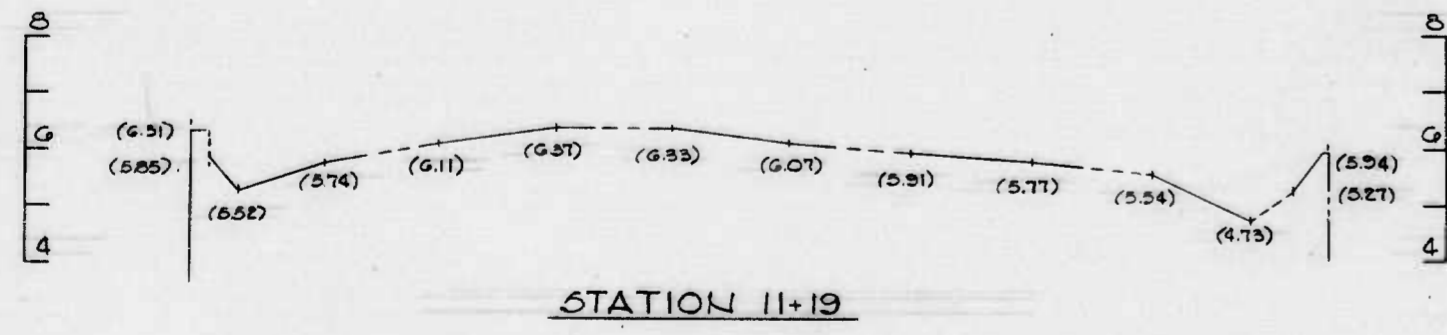
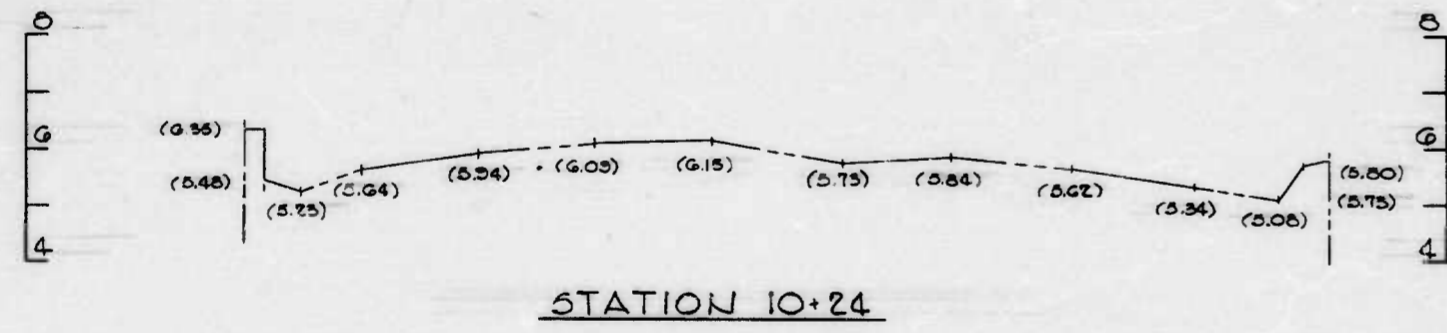
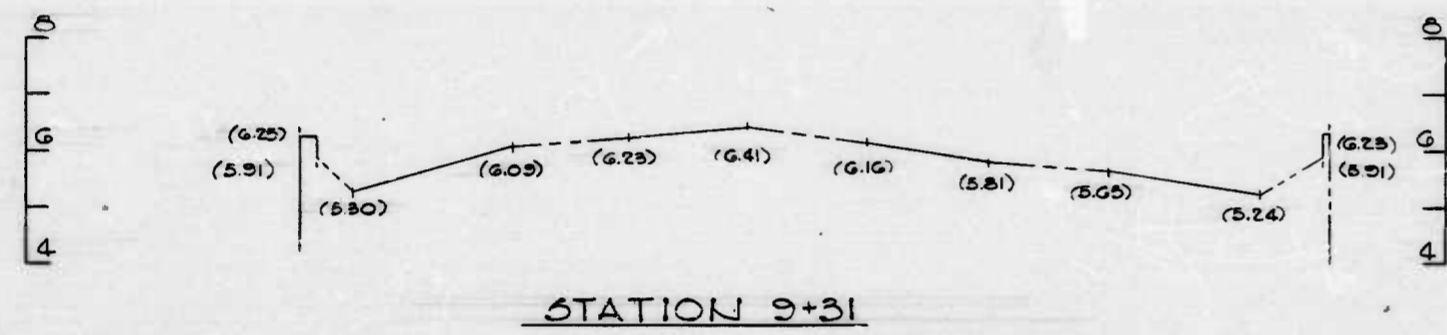
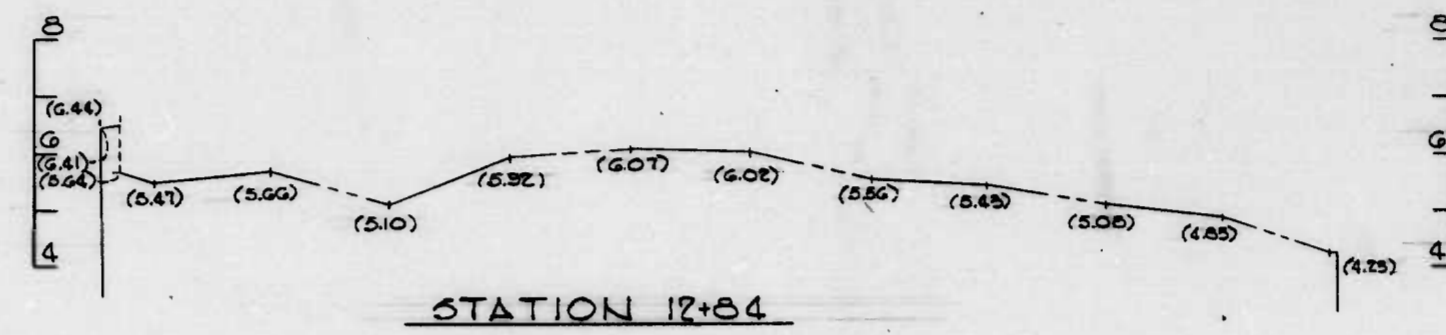
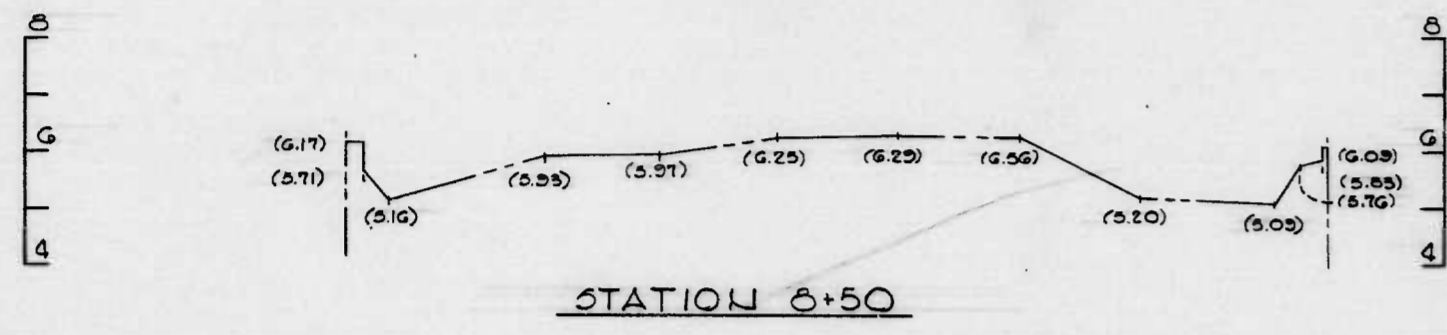
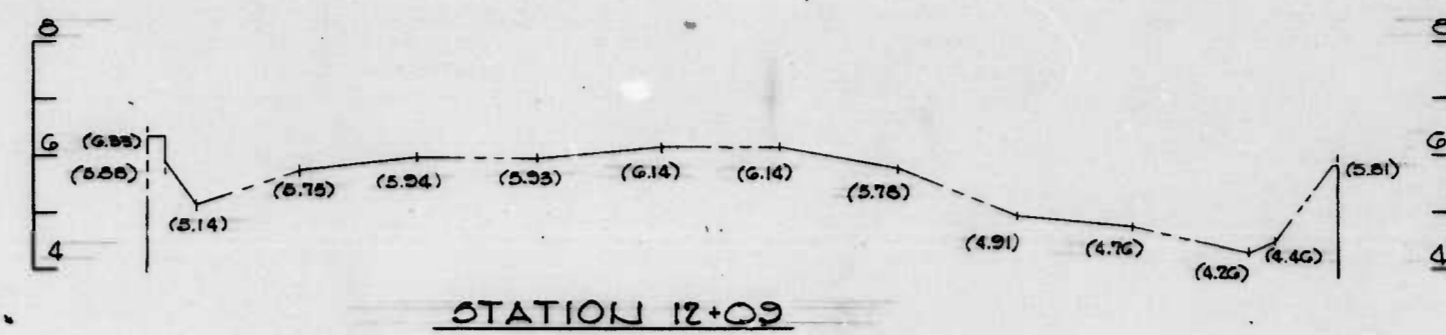
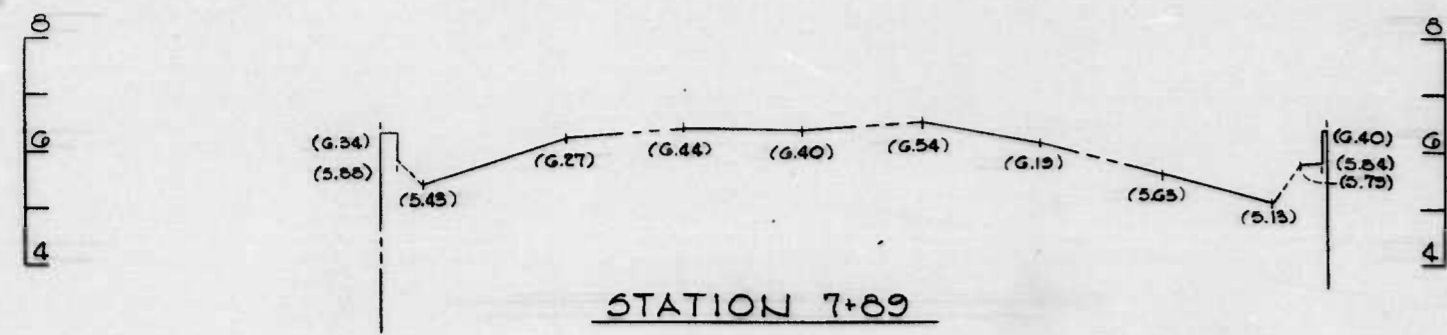
SCALE \_\_\_\_\_ DATE \_\_\_\_\_  
SHEET 51 OF 51

FILE REF.



FILE REF.

REVISIONS			
NO.	DESCRIPTION	DATE	BY



CITY OF BALTIMORE  
DEPARTMENT OF PUBLIC WORKS  
BUREAU OF ENGINEERING

SCALE \_\_\_\_\_ DATE \_\_\_\_\_

SHEET SD24

FILE REF.



