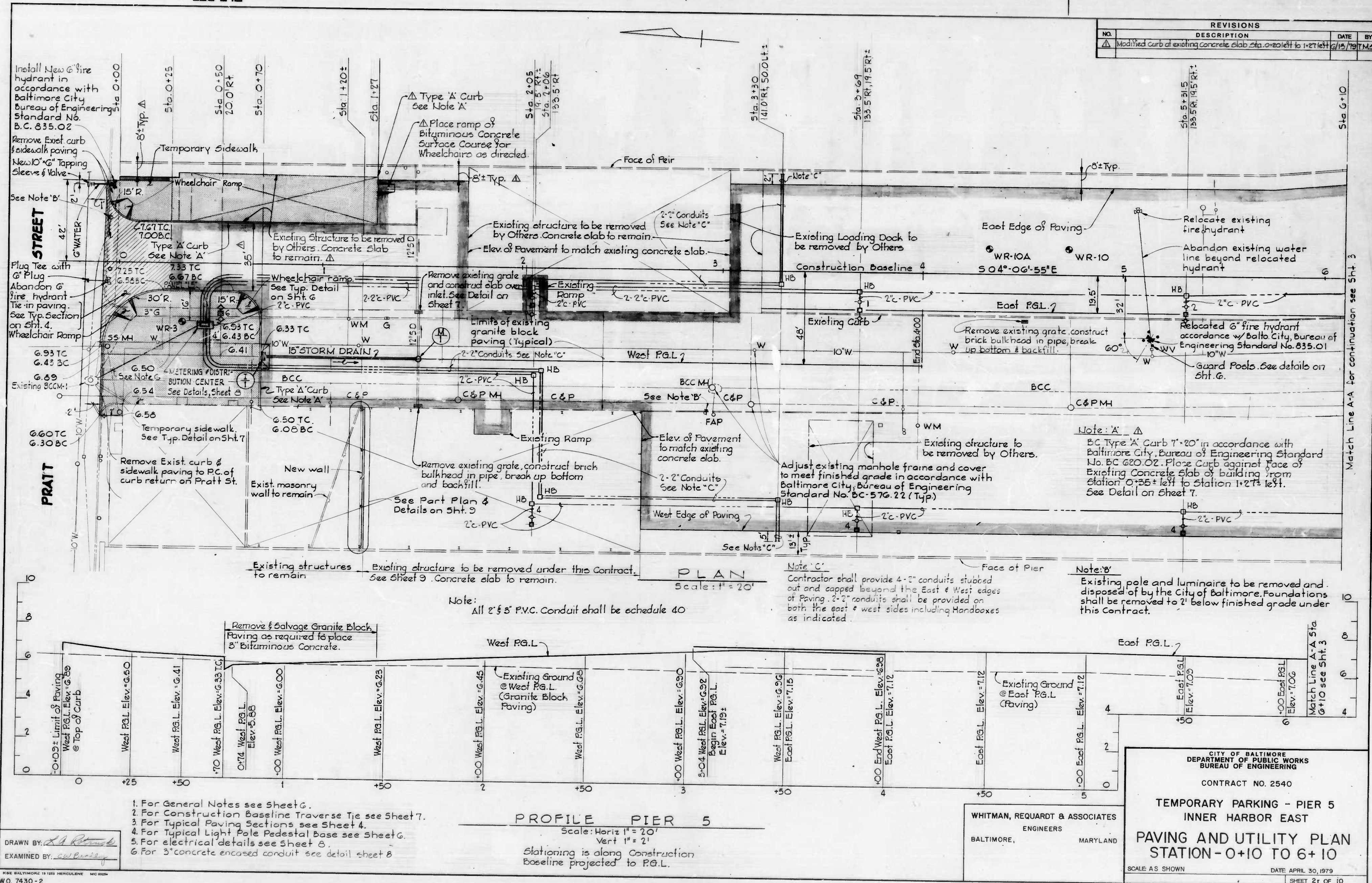
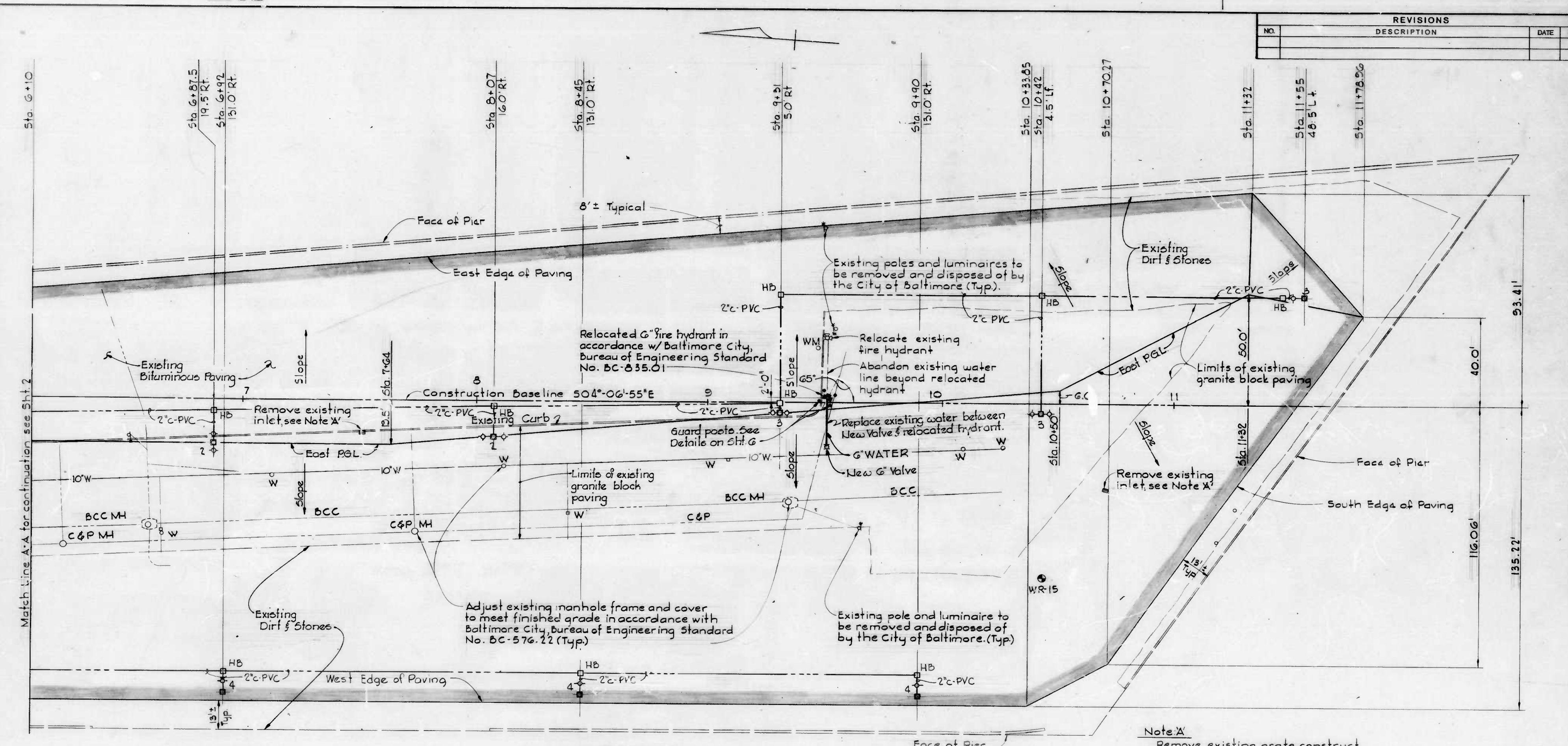


FILE REF.





FILE REF.

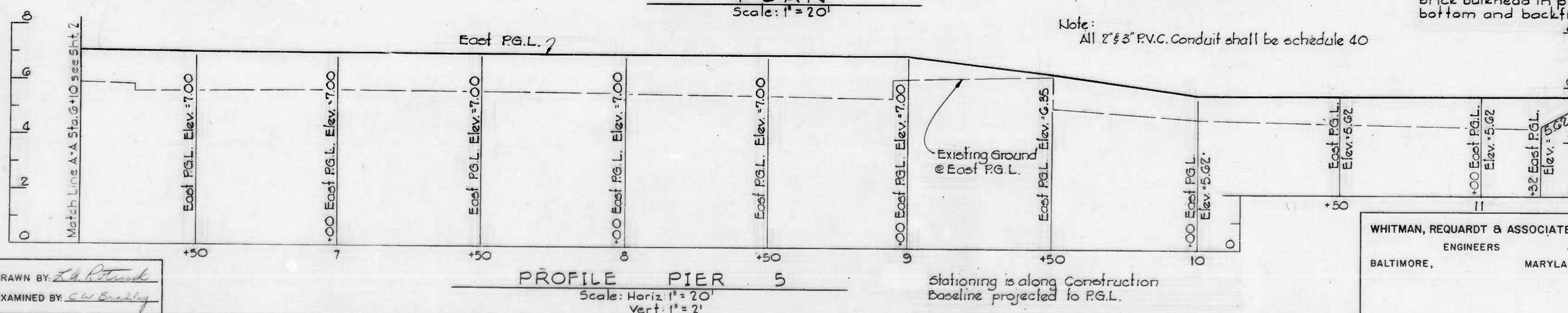


REVISIONS			
NO.	DESCRIPTION	DATE	BY

PLAN  
Scale: 1" = 20'

Note:  
All 2" x 3" P.V.C. Conduit shall be schedule 40

Note 'A'  
Remove existing grate, construct brick bulkhead in pipe, break up bottom and backfill.



PROFILE PIER 5  
Scale: Horiz. 1" = 20'  
Vert. 1" = 2'

DRAWN BY: *L. A. Poter*  
EXAMINED BY: *C. W. Beasley*

MADE BALTIMORE 19 1955 HERCULENE MC 8559  
W.O. 7430-2

WHITMAN, REQUARDT & ASSOCIATES  
ENGINEERS  
BALTIMORE, MARYLAND

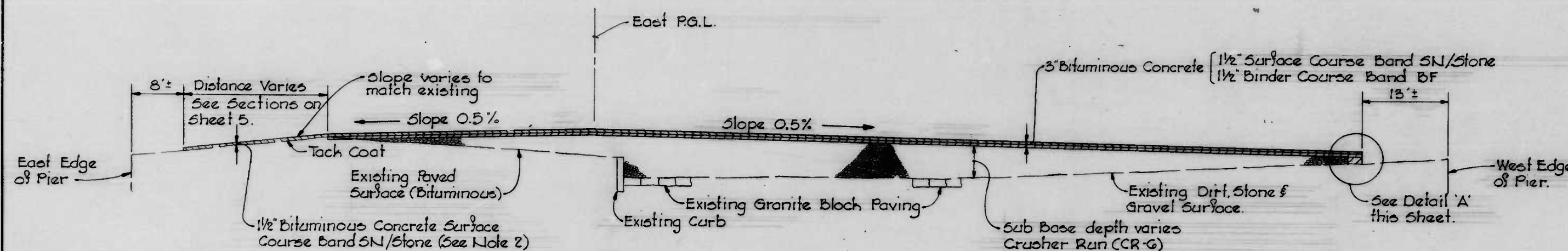
CITY OF BALTIMORE  
DEPARTMENT OF PUBLIC WORKS  
BUREAU OF ENGINEERING  
CONTRACT NO. 2540  
TEMPORARY PARKING - PIER 5  
INNER HARBOR EAST  
PAVING AND UTILITY PLAN  
STATION 6+10 TO 11+80  
SCALE AS SHOWN  
DATE: APRIL 30, 1979  
SHEET 3 OF 10

FILE REF.



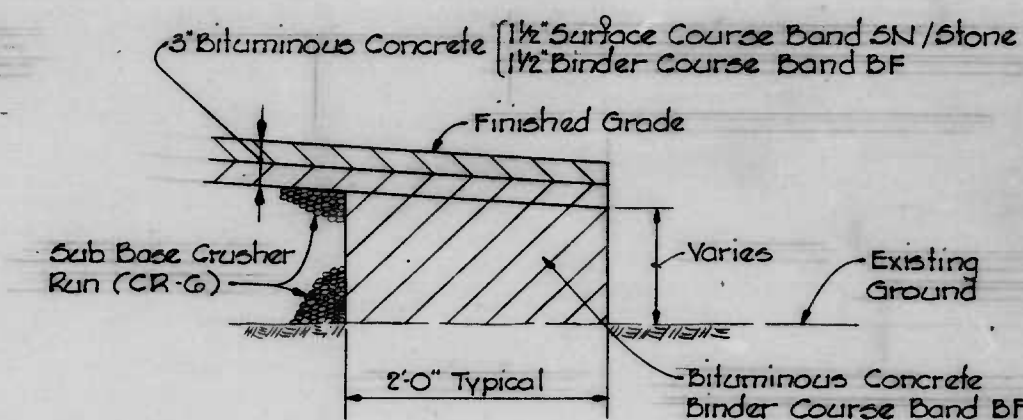
FILE REF.

REVISIONS			
NO.	DESCRIPTION	DATE	BY

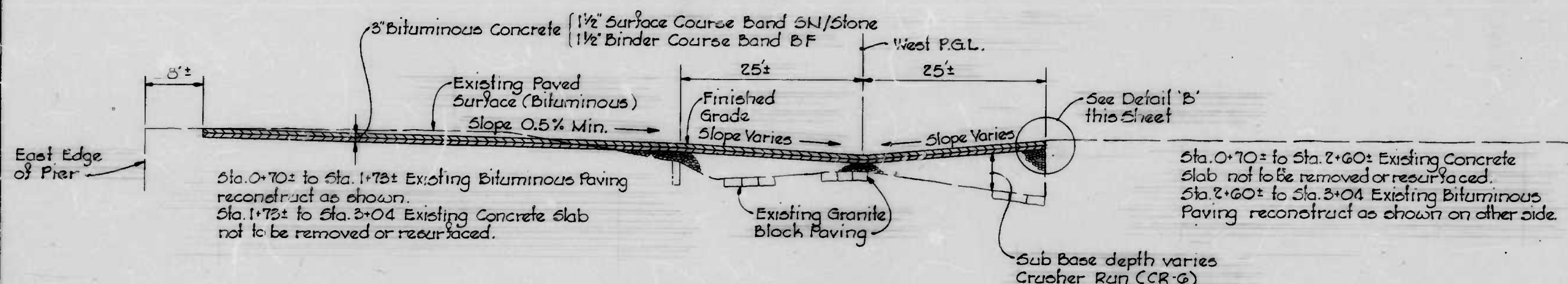


**TYPICAL PAVEMENT SECTION - CROWN**  
Sta. 4+00 to Sta. 11+79

1. From Sta. 3+04 to Sta. 4+00 transition from Swale Section to Crown Section by transitioning West slope from up to down.
2. 1 1/2 inch Bituminous Concrete Surface Course to be placed on Existing Bituminous Paving. Where Existing Pavement is in unsuitable condition, the unsuitable material shall be removed as directed to a maximum depth of 2' and refilled with Crusher Run (CR-G) to within 3" of Finished Grade. The final 3" shall be a 1 1/2 inch Bituminous Concrete Binder Course Band BF and a 1 1/2 inch Bituminous Concrete Surface Course Band SN/Stone.

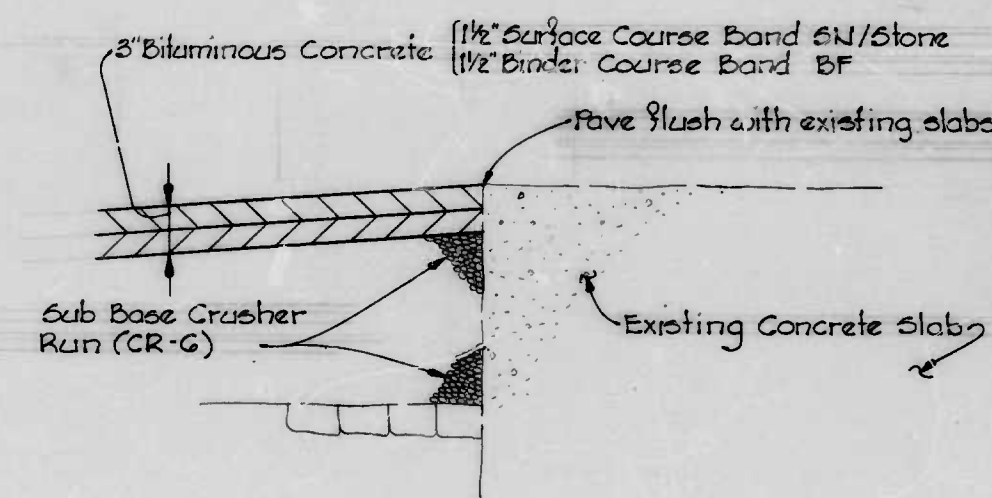


**DETAIL 'A'**  
No Scale



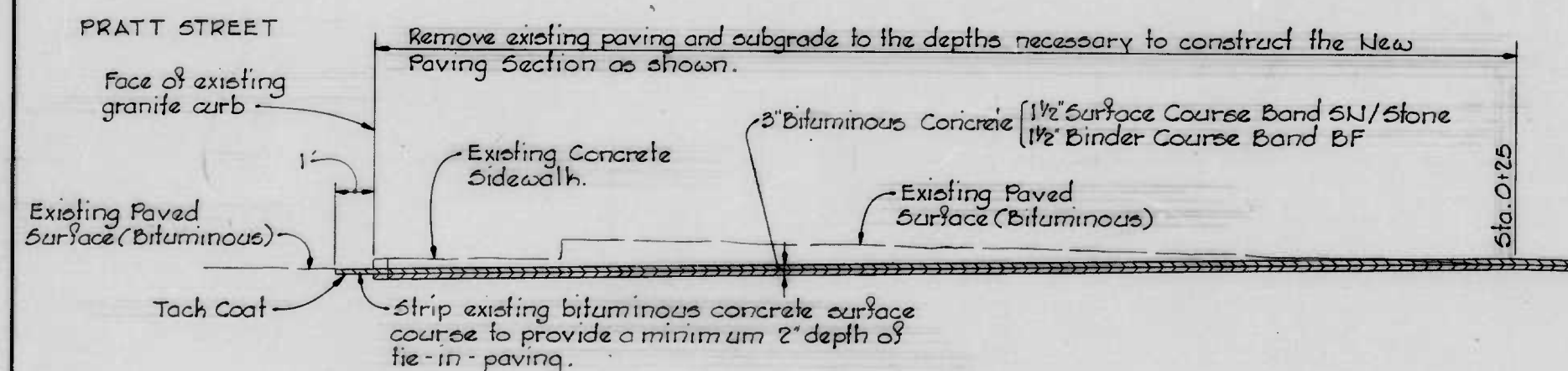
**TYPICAL PAVEMENT SECTION - SWALE**  
Sta. 0+70 to Sta. 3+04

Note: 1. From Sta. 0+25 to Sta. 0+70 Pavement to be 1 1/2 inch Bituminous Concrete Surface Course (Band SN/Stone) on top of a 1 1/2 inch Bituminous Concrete Binder Course (Band BF). Pavement to be placed to Elevations shown on Plan see Sheet 2.



**DETAIL 'B'**  
No Scale

Note: Applicable from Sta. 1+22 to Sta. 2+60 right of West P.G.L. and along the south side of that slab. Sta. 1+72 to Sta. 3+03 Lt. of West P.G.L. and along its north and south sides.



**TIE-IN PAVING SECTION**

DRAWN BY: J.R. Cook  
EXAMINED BY: T.M. Smith

W.O. 7430-2

WHITMAN, REQUARDT & ASSOCIATES  
ENGINEERS  
BALTIMORE, MARYLAND

CITY OF BALTIMORE  
DEPARTMENT OF PUBLIC WORKS  
BUREAU OF ENGINEERING

CONTRACT NO. 2540

TEMPORARY PARKING - PIER 5  
INNER HARBOR EAST  
TYPICAL PAVING  
SECTIONS

SCALE: AS SHOWN

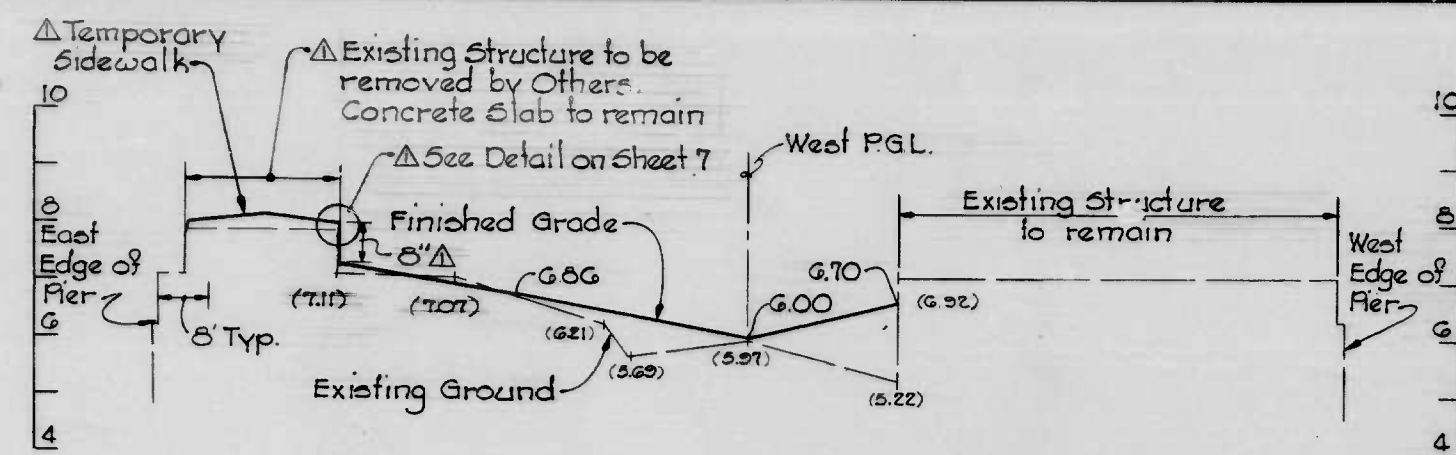
DATE: APRIL 30, 1979

SHEET 4 OF 10

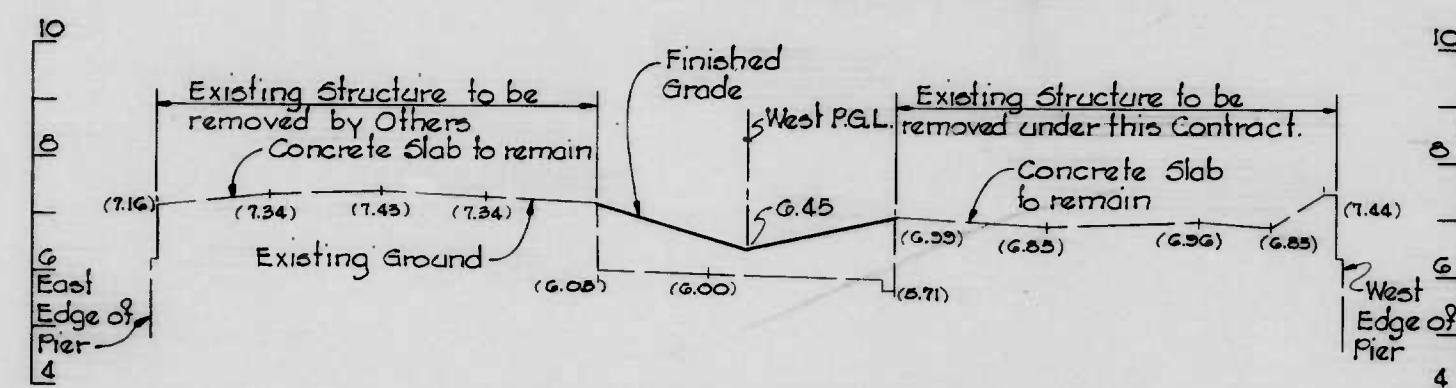
FILE REF.



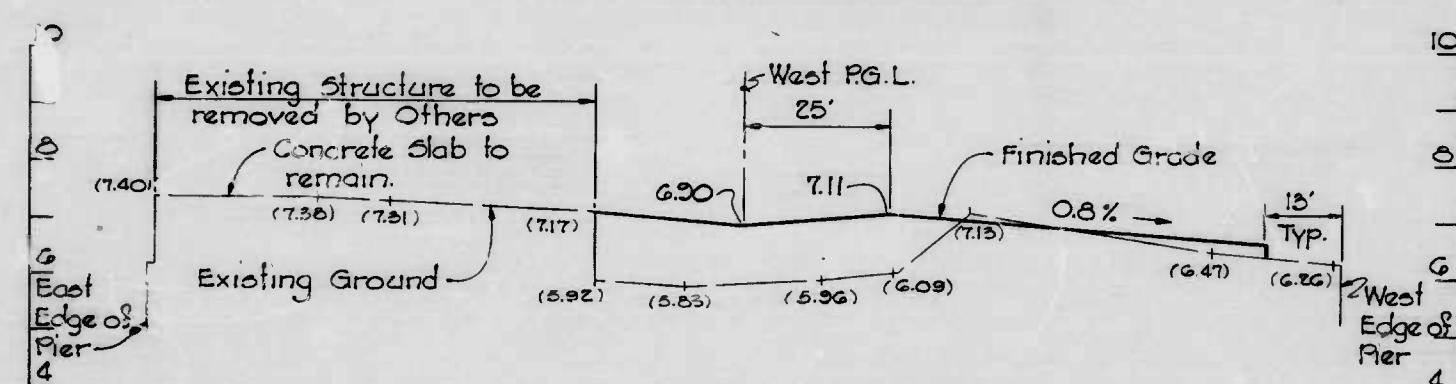
FILE REF.



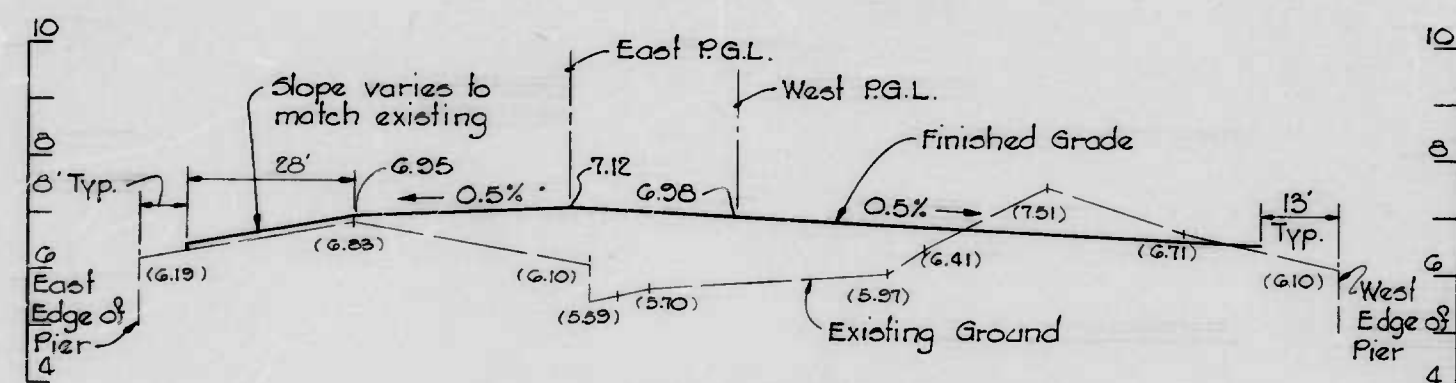
STATION 1+00



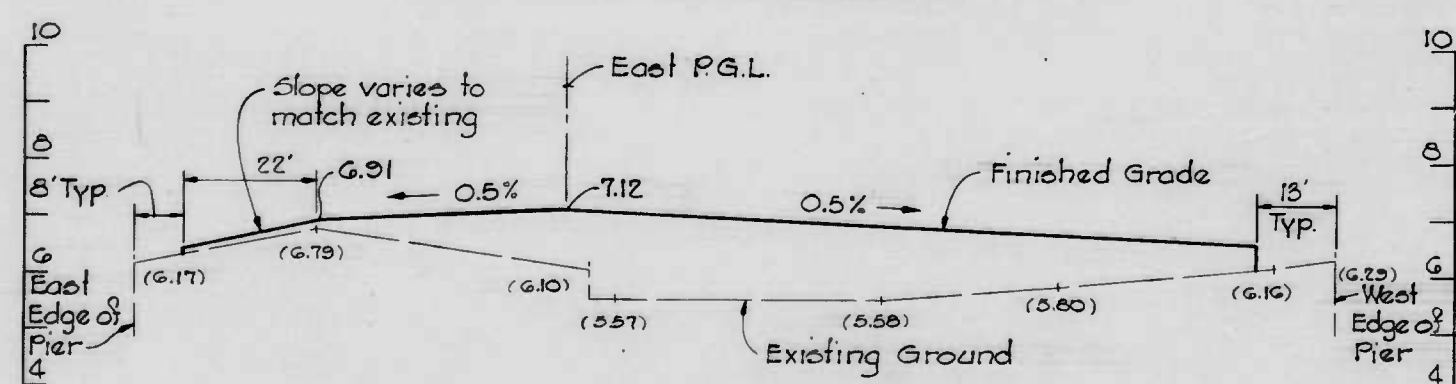
STATION 2+00



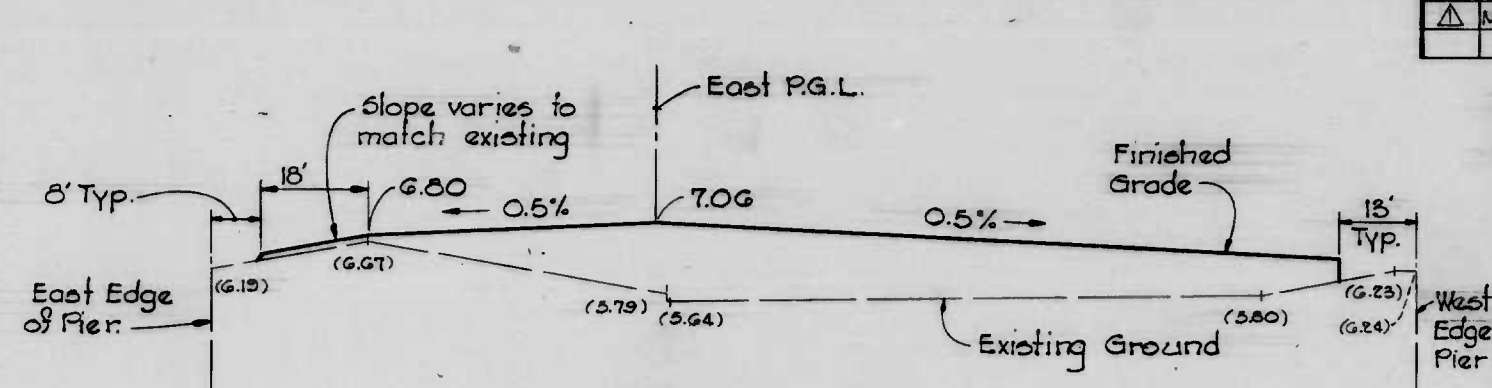
STATION 3+00



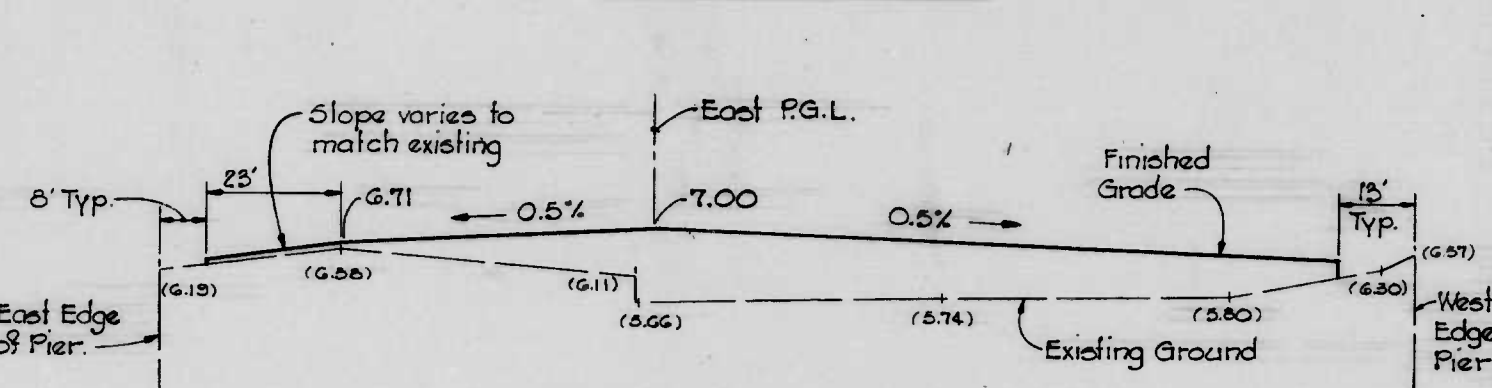
STATION 4+00



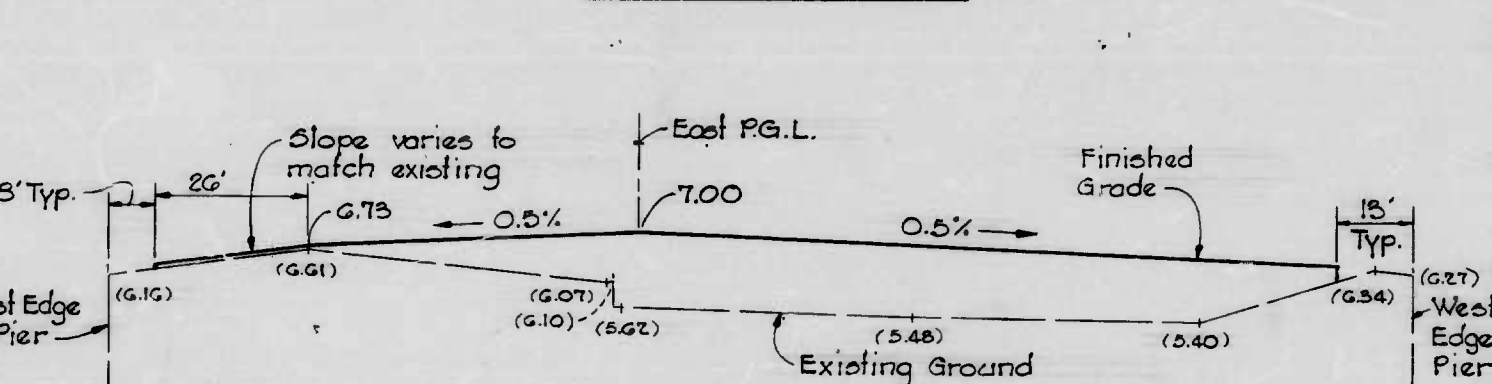
STATION 5+00



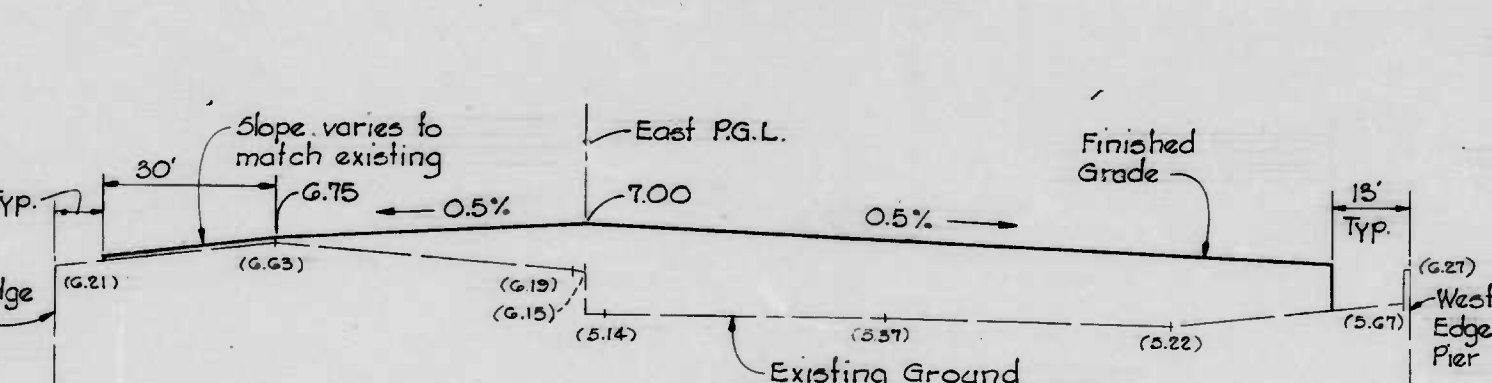
STATION 6+00



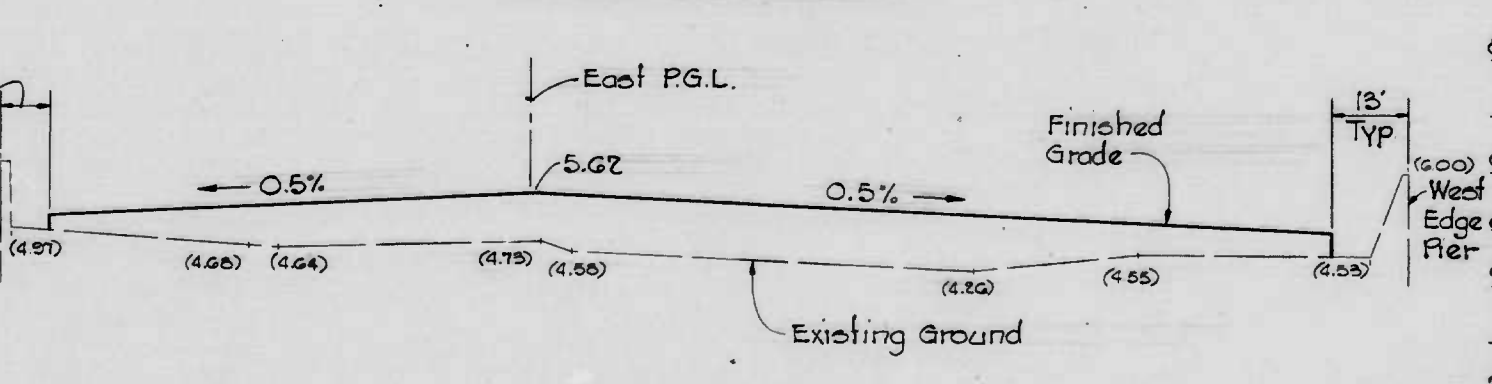
STATION 7+00



STATION 8+00



STATION 9+00



STATION 10+00

REVISIONS			
NO.	DESCRIPTION	DATE	BY
1	Modified Section 100 to show curb & existing concrete slab.	6/15/79	T.M.G.

Notes:  
Existing ground elevations are based on "PLAT SHOWING THE PHYSICAL OUTLINE TOPOGRAPHY AND UTILITIES OF PIER 5 LOCATED ON THE SOUTH SIDE OF PRATT STREET" dated October 27, 1977, prepared by the City of Baltimore, Department of Public Works, Bureau of Engineering Surveys and Records Division.

DRAWN BY: J.R. Chalk  
EXAMINED BY: T.M. Smith

# PIER 5 CROSS SECTIONS

Scale: Horiz. 1" = 20'  
Vert. 1" = 2'

WHITMAN, REQUARDT & ASSOCIATES  
ENGINEERS  
BALTIMORE, MARYLAND

CITY OF BALTIMORE  
DEPARTMENT OF PUBLIC WORKS  
BUREAU OF ENGINEERING

CONTRACT NO. 2540

TEMPORARY PARKING - PIER 5  
INNER HARBOR EAST

## CROSS SECTIONS

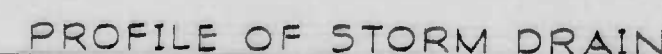
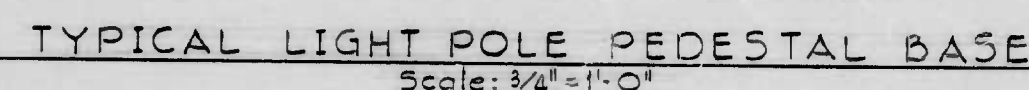
SCALE AS SHOWN

DATE: APRIL 30, 1979

SHEET 5 OF 10

FILE REF.



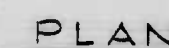
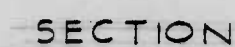
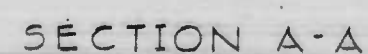
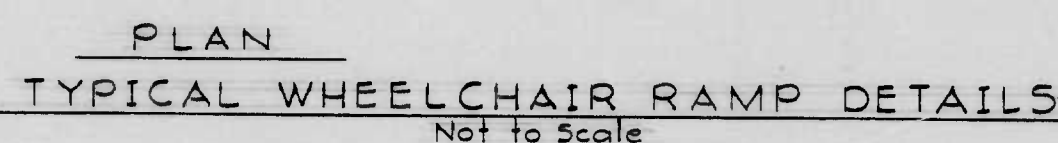


Scale: Horiz. 1" = 20'  
Vert. 1" = 2'

Note:

Inlet 1:1 shall be a Baltimore City Standard Type 'E' Combination Inlet constructed in accordance with Standard No. BC-376.22, with a 6" foundation constructed of Mix No. 100 and a 6" depressed pavement in accordance with Standard No. BC-376.39. The curb shall be a Precast Special Curb for Undepressed 'E' Combination Inlet in accordance with Standard No. BC-376.22 with a battered face.

K&E BALTIMORE 18 1293 HERCULENE MC 8025  
W O 7430-2



GUARD POST DETAIL  
Scale:  $3/4" = 1'-0"$

Note:

Posts will be painted by the City of Baltimore, Department of Transit and Traffic, after installation.

GENERAL NOTES

1. All utility work shall be done in accordance with the City of Baltimore, Department of Public Works Bureau of Engineering "BOOK OF STANDARDS" unless otherwise shown on the drawings.
2. Existing water valves and hydrants shall be operated by the Bureau of Operations personnel only.
3. Existing utilities are shown in accordance with information available as indicated in Note 1 on Sheet No. 7. The City does not warrant or guarantee the correctness or the completeness of the information shown. The Contractor shall verify all such information to his own satisfaction before working in the area of existing utilities.
4. Notify the Bureau of Operations at 396-0320 at least three (3) days before starting work.
5. Notify "MISS UTILITY" at 559-0100 at least three (3) days prior to starting, stating: (1) Nature of work, (2) Location of job and Contract Number, and (3) Time and Date for starting work so that The Baltimore Gas and Electric Company can mark its facilities.
6. The Contractor shall observe extreme caution when working over or near existing water facilities.
7. All handboxes indicated ☐ HB shall be in accordance with Baltimore City, Dept. of Public Works, Bureau of Engineering Standards No. BC-804.01 thru BC-804.05.
8. All conduits shall be concrete encased with spacing and thickness of concrete as shown in Detail- CONCRETE ENCASED CONDUITS, sheet 8.
9. The Contractor shall notify the Street Lighting Section City of Baltimore, at least 14 days prior to the requirement for removal of existing street lights.
10. Pier 5 is occupied by several existing buildings. The building occupied by Connolly's Restaurants shall remain. The building behind Connolly's shall be partially removed and modified as shown on these drawings by the Contractor. The other structures will be removed by the City of Baltimore prior to the beginning of construction. These buildings have been identified on these drawings as "Existing Structure to be removed by Others". The pier will be cleaned of debris by the City prior to construction of this project.
11. All 2" & 3" P.V.C. Conduits shall be schedule 40.

**WHITMAN, REQUARDT & ASSOCIATES**  
ENGINEERS  
BALTIMORE, MARYLAND

CITY OF BALTIMORE  
DEPARTMENT OF PUBLIC WORKS  
BUREAU OF ENGINEERING

CONTRACT NO. 2540

TEMPORARY PARKING - PIER 5  
INNER HARBOR EAST

## TYPICAL DETAILS

SCALE: AS SHOWN

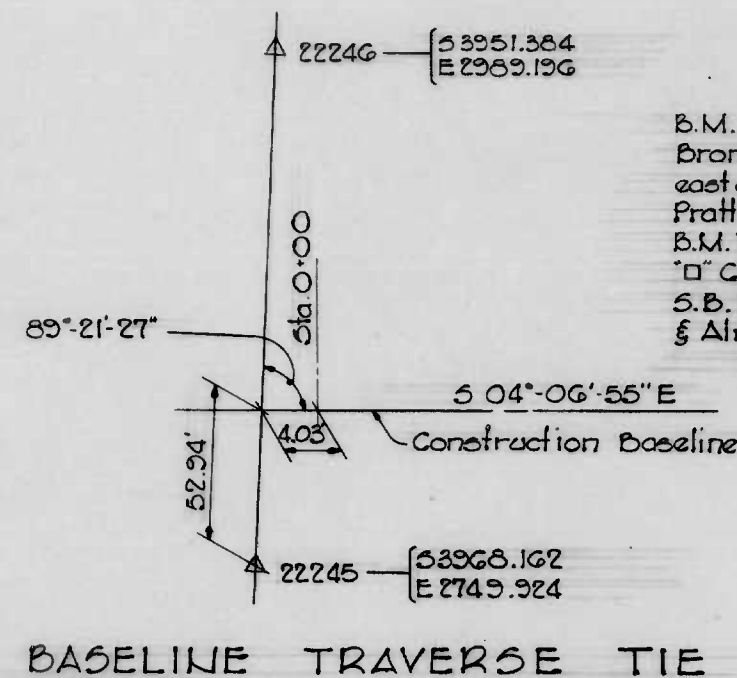
DATE: APRIL 30, 1979

	SHEET 6r OF 10
--	----------------

FILE REF.

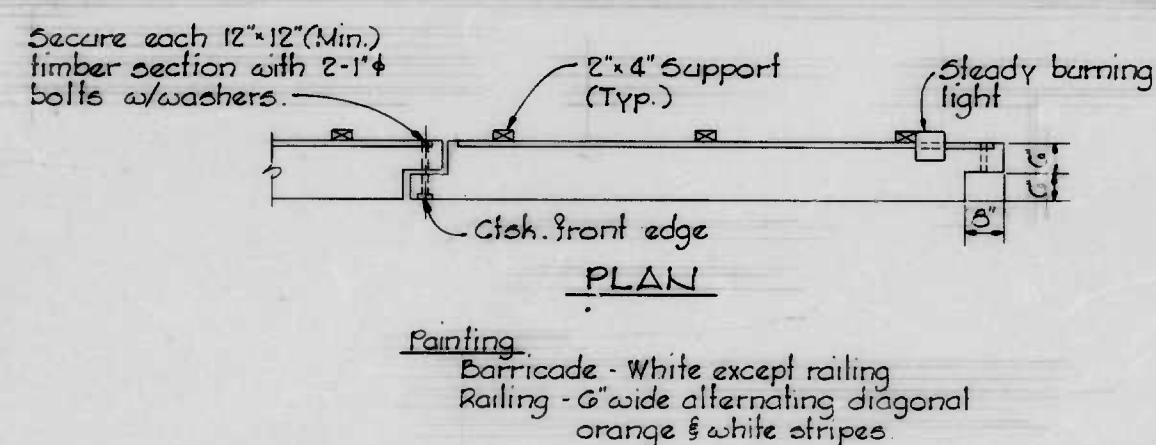


FILE REF.



**Notes:**

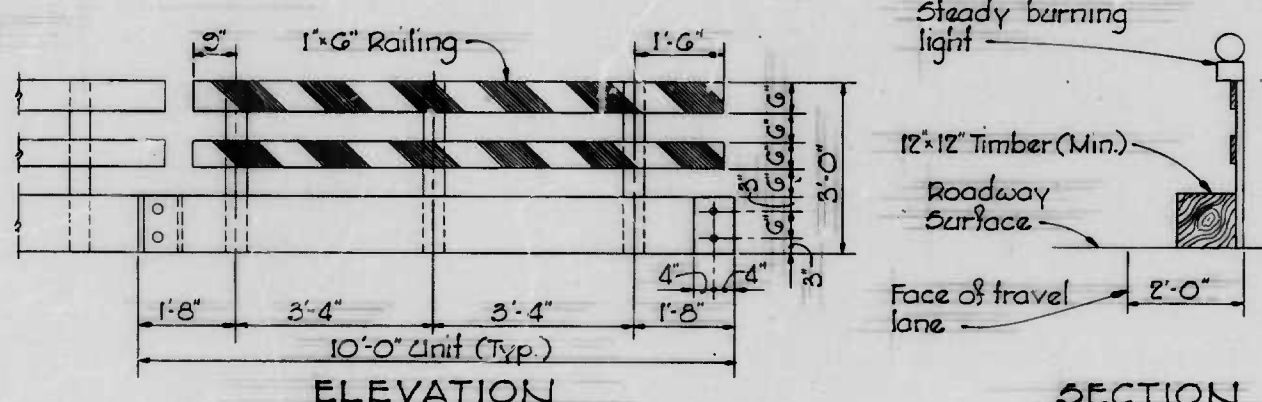
- Existing topography, elevations, and utilities are based on "PLAT SHOWING THE PHYSICAL OUTLINE, TOPOGRAPHY AND UTILITIES OF PIER 5 LOCATED ON THE SOUTH SIDE OF PRATT STREET" dated October 27, 1977, prepared by the City of Baltimore, Department of Public Works, Bureau of Engineering, Surveys and Records Division.
- The Contractor shall protect all existing Baltimore City Topographic Traverse Points and Bench Marks until the Construction Baseline and Construction bench Marks are established and referenced by the Contractor.



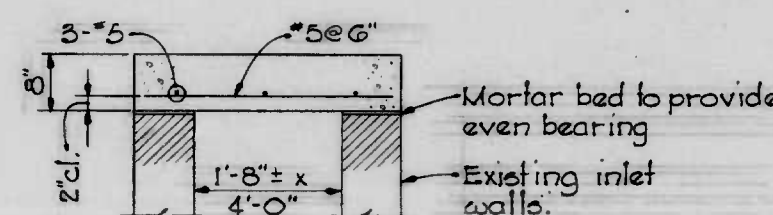
**Painting:**  
Barricade - White except railing  
Railing - 6" wide alternating diagonal orange & white stripes

**TEMPORARY TRAFFIC BARRICADE**

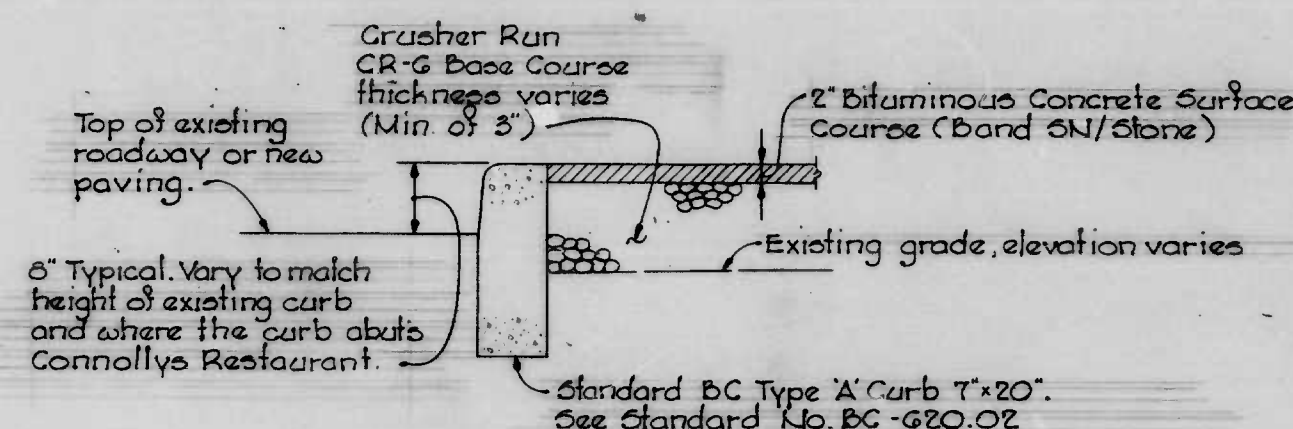
Not to scale  
This Barricade to be used to protect any work within Pratt Street R/W.



**CONCRETE COVER FOR EXIST. INLET**  
Note: 1 required. Length & width to match outside wall dimensions of existing inlet. Slab to open short dimension.

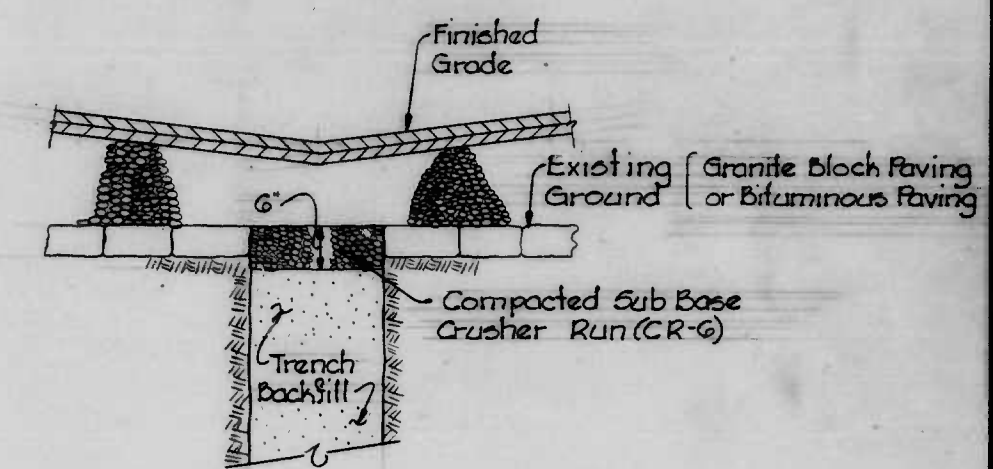


**SECTION**  
Scale: 3/4" = 1'-0"

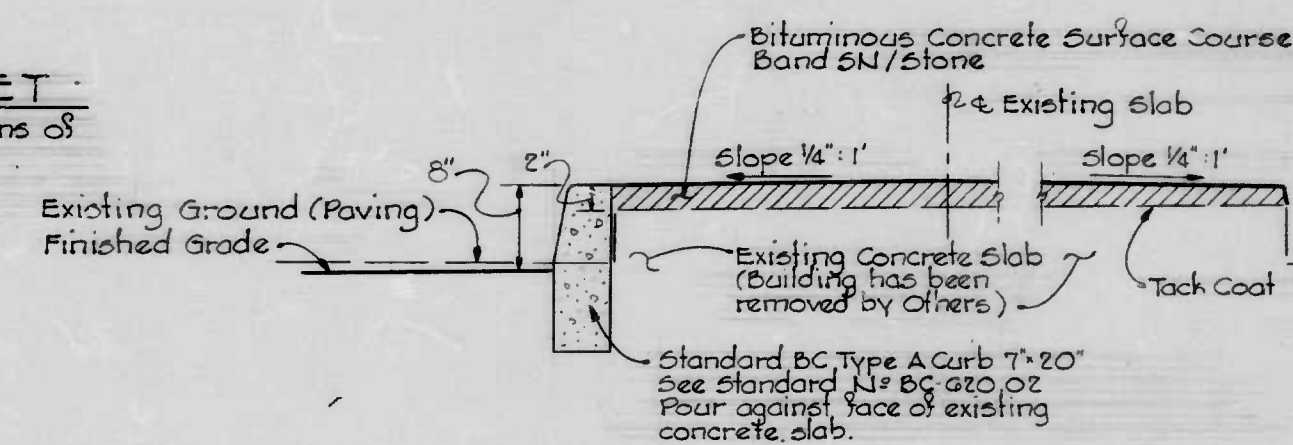


**TYPICAL DETAIL  
TEMPORARY SIDEWALK**

Not to scale  
See Detail below where curb abuts existing concrete slab from station 0+25± left to station 1+27± left.



**DETAIL TYPICAL UTILITY  
TRENCH REPAIR**  
Not to scale



**SPECIAL DETAIL  
CURB AND TEMPORARY SIDEWALK AT EXISTING  
CONCRETE SLAB**  
Not to scale

Use this detail from station 0+35± left to station 1+27± left at the Existing Concrete Slab.

DRAWN BY J.R. Chalk  
EXAMINED BY J.H. Smith

W.O. 7430-2

WHITMAN, REQUARDT & ASSOCIATES  
ENGINEERS  
BALTIMORE, MARYLAND

CITY OF BALTIMORE  
DEPARTMENT OF PUBLIC WORKS  
BUREAU OF ENGINEERING  
CONTRACT NO. 2540  
TEMPORARY PARKING - PIER 5  
INNER HARBOR EAST  
TYPICAL DETAILS

SCALE AS SHOWN  
DATE: APRIL 30, 1979  
SHEET 7 OF 10

FILE REF.



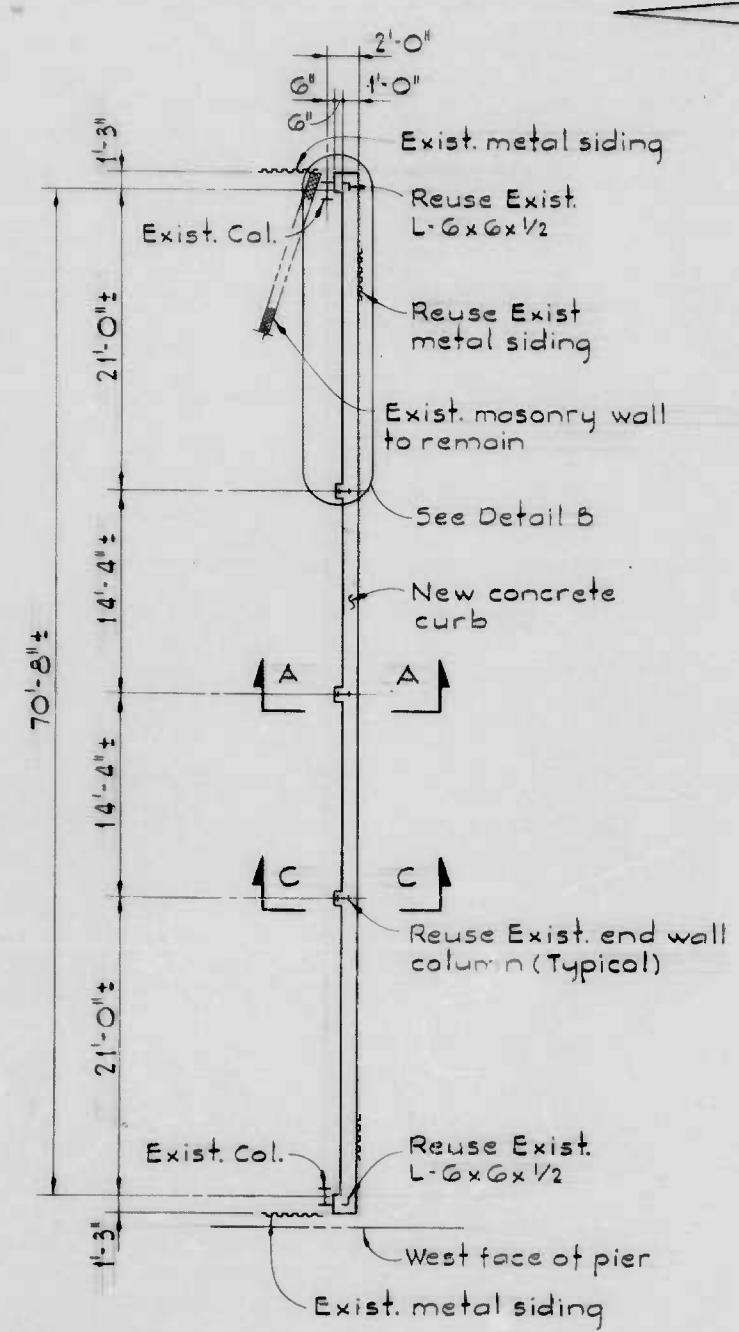


W.O. 7430-2

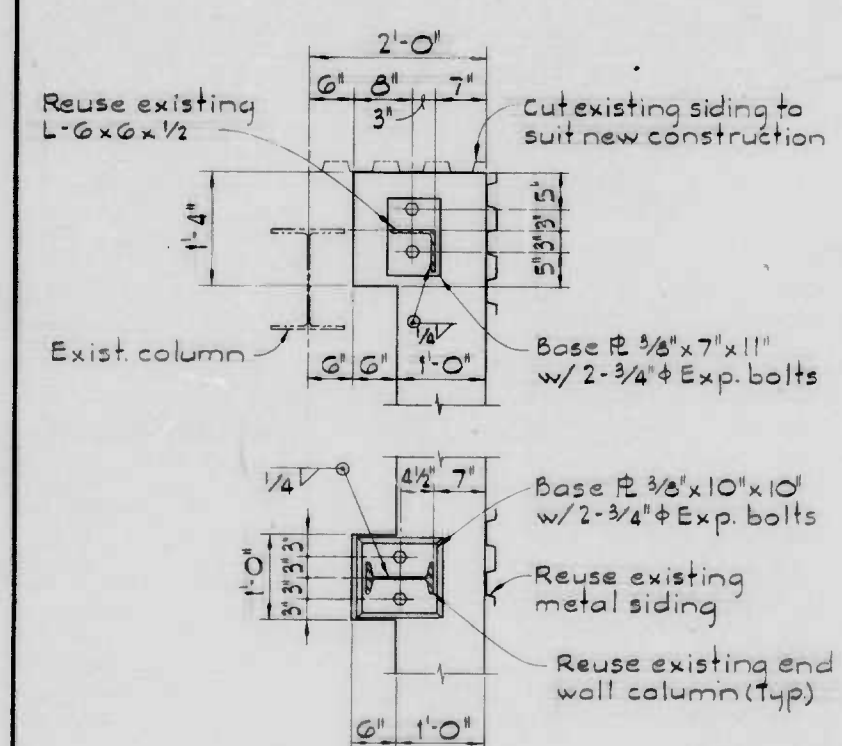


FILE REF.

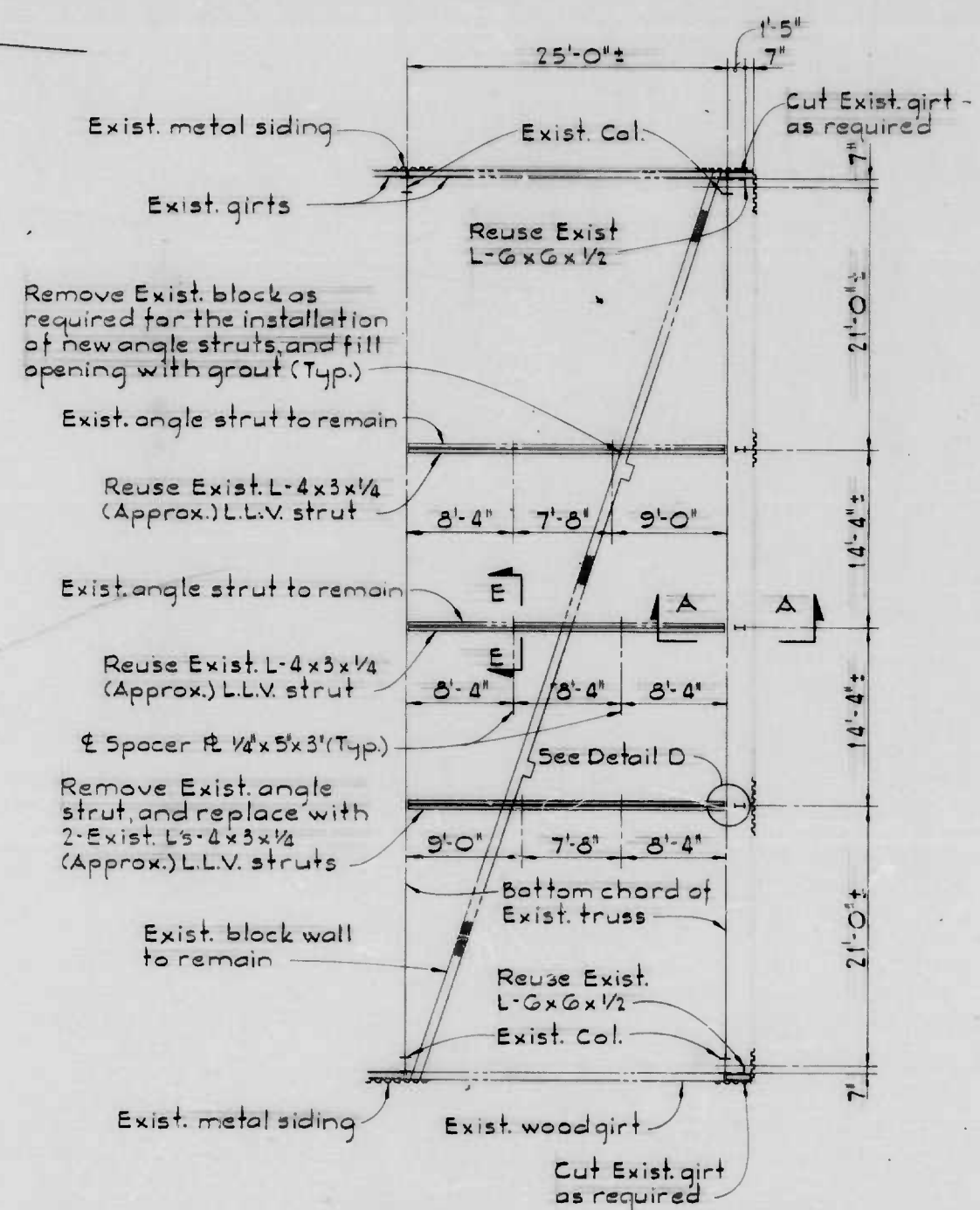
REVISIONS			
NO.	DESCRIPTION	DATE	BY



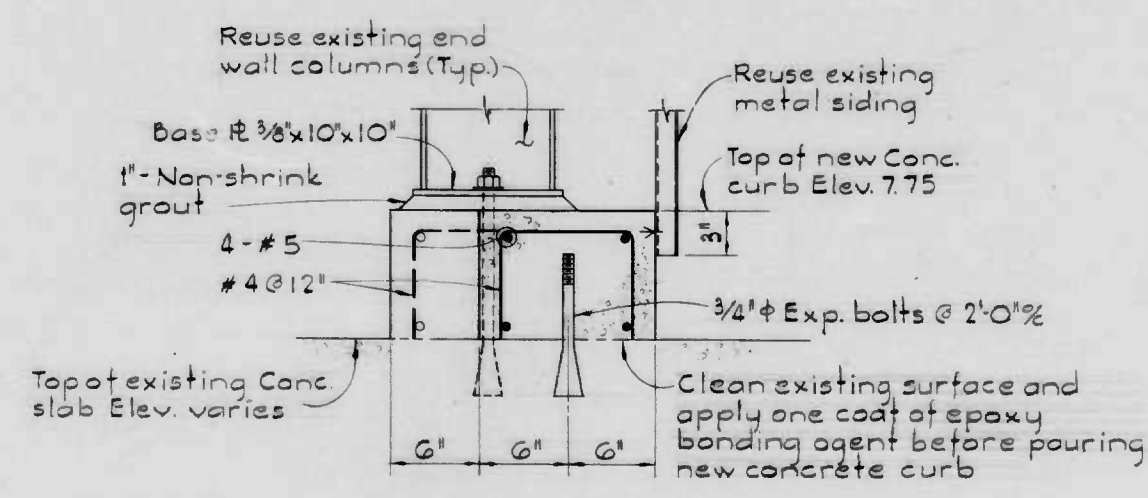
PART PLAN ATELEV. 8.00  
Scale: 3/8"=1'-0"



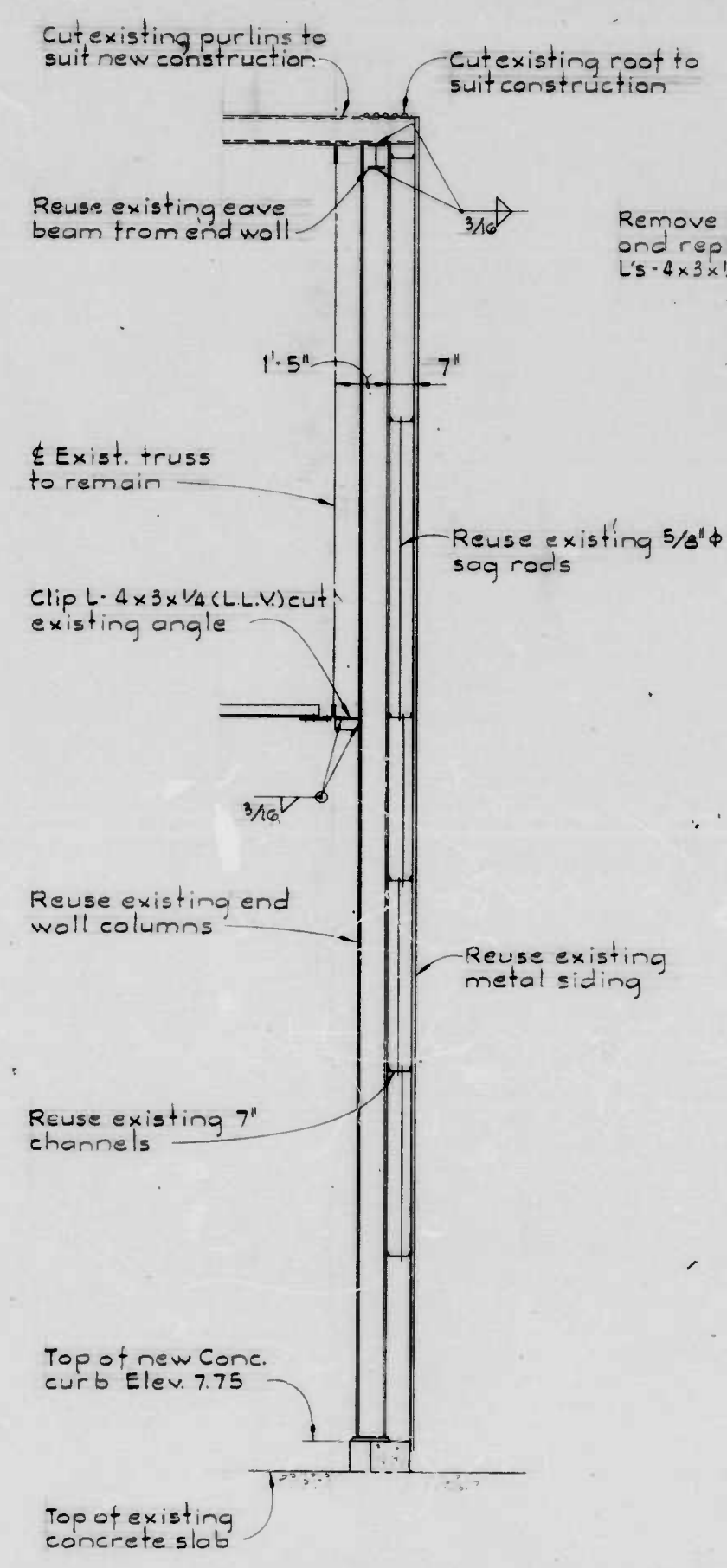
DETAIL B  
Scale: 3/4"=1'-0"



PART PLAN ATELEV. 26.00  
Scale: 3/8"=1'-0"

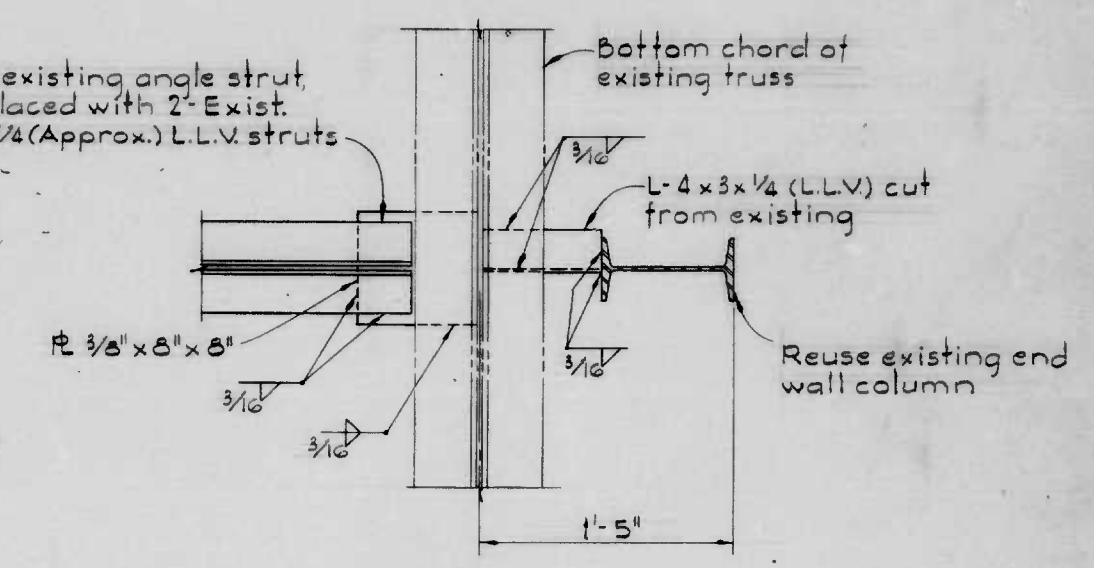


SECTION C-C  
Scale: 1 1/2"=1'-0"

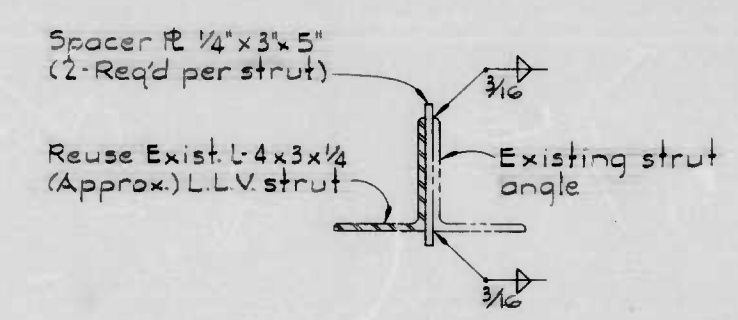


SECTION A-A  
Scale: 3/8"=1'-0"

Remove existing angle strut and replaced with 2" Exist. L-4x3x1/4 (Approx.) L.L.V. struts



DETAIL D  
Scale: 1 1/2"=1'-0"



SECTION E-E  
Scale: 3/8"=1'-0"

WHITMAN, REQUARDT & ASSOCIATES  
ENGINEERS  
BALTIMORE, MARYLAND

CITY OF BALTIMORE  
DEPARTMENT OF PUBLIC WORKS  
BUREAU OF ENGINEERING  
CONTRACT NO. 2540  
TEMPORARY PARKING - PIER 5  
INNER HARBOR EAST  
BUILDING MODIFICATION  
DETAILS  
SCALE AS SHOWN  
DATE APRIL 30, 1979  
SHEET 9 OF 10

FILE REF.

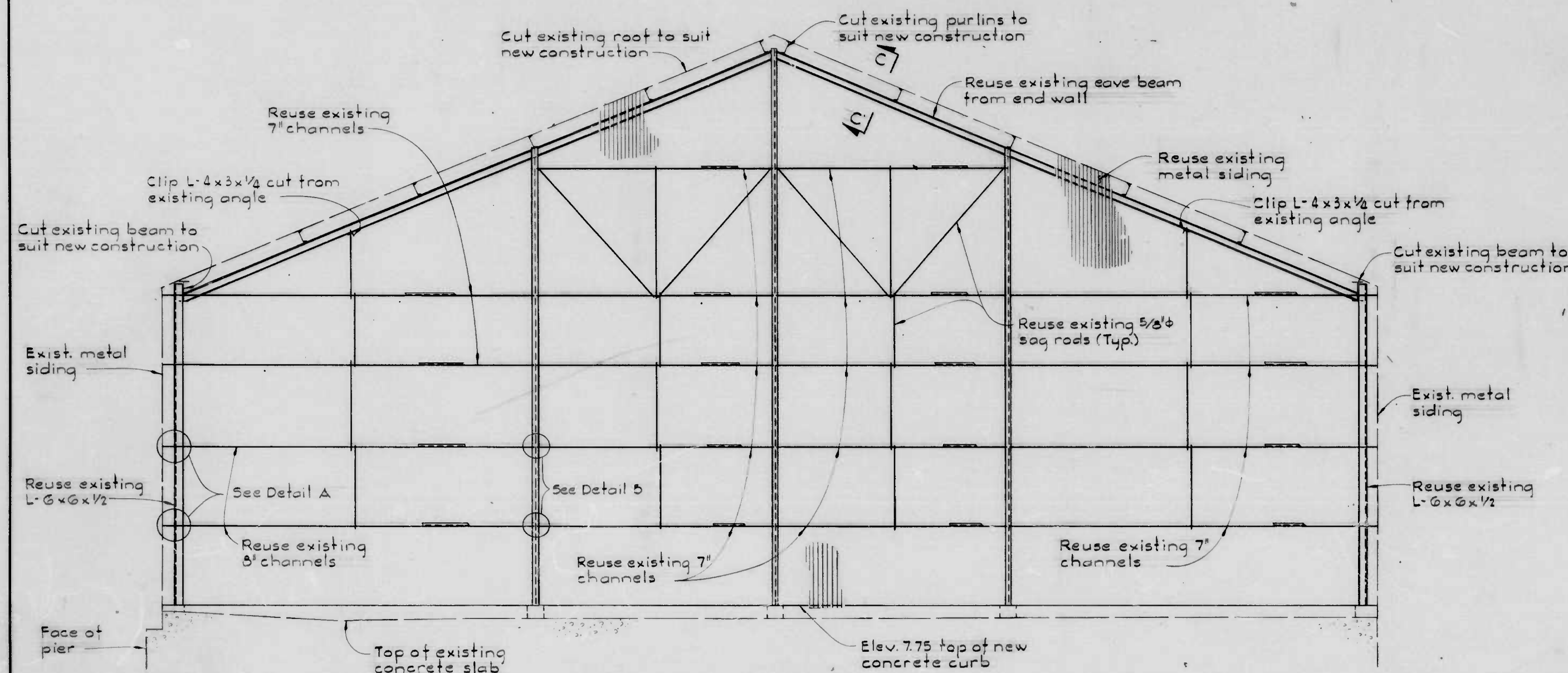
DRAWN BY: *[Signature]*  
EXAMINED BY: *[Signature]*

W.O. 7430-2



FILE REF.

REVISIONS			
NO.	DESCRIPTION	DATE	BY

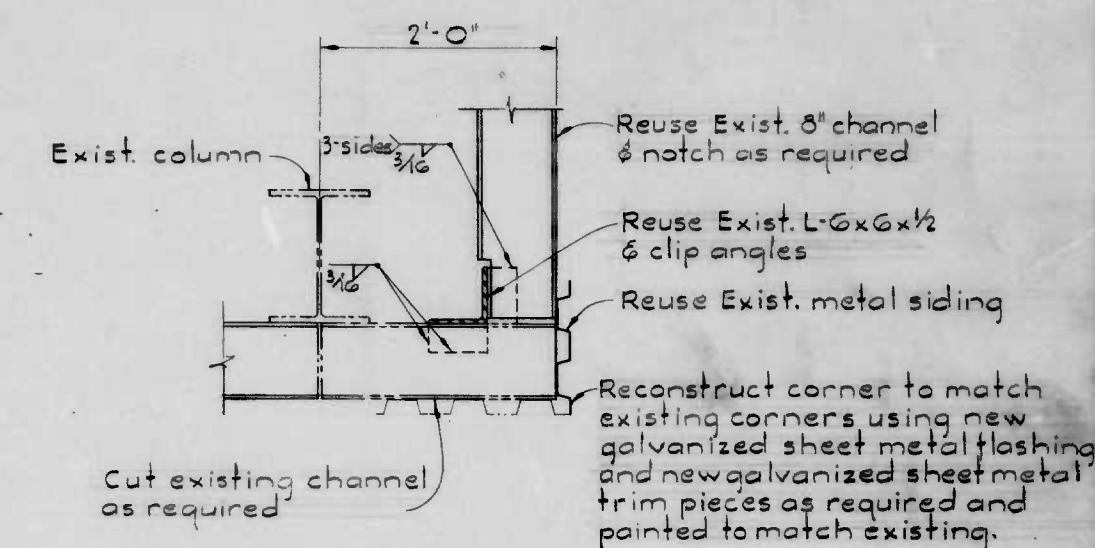


**SOUTH ELEVATION**

Scale: 1/4" = 1'-0"

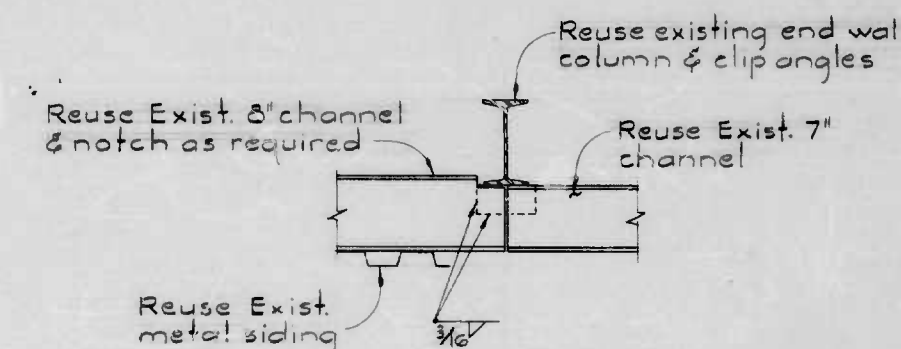
**NOTES:**

1. All existing dimensions shown are approximate, and shall be verified in the field by the Contractor.
2. All steel members to be reused shall be chosen from the part of the existing building to be removed, and shall be free from visible damage.
3. The Contractor shall remove the part of the existing building safely, and shall assume full responsibility for the safety of the workers and all adjacent properties.
4. The Contractor shall reuse existing metal siding salvaged from that portion of the existing building to be removed. It is the Contractor's responsibility to carefully remove enough metal siding, without damaging it, to reuse on the new south wall being constructed and to close up those gaps that exist on the west wall. Any new siding used will be at the Contractor's expense.



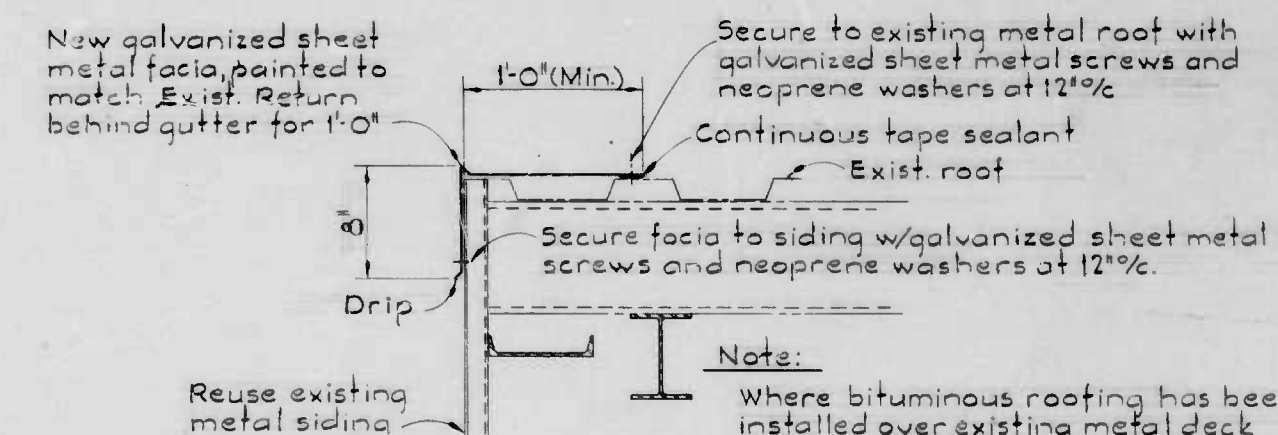
**DETAIL A**

Scale: 1" = 1'-0"



**DETAIL B**

Scale: 1" = 1'-0"



**SECTION C-C**

Scale: 1 1/2" = 1'-0"

DRAWN BY: *[Signature]*  
EXAMINED BY: *[Signature]*

W.O. 7430-2

WHITMAN, REQUARDT & ASSOCIATES  
ENGINEERS  
BALTIMORE, MARYLAND

CITY OF BALTIMORE  
DEPARTMENT OF PUBLIC WORKS  
BUREAU OF ENGINEERING

CONTRACT NO. 2540

TEMPORARY PARKING - PIER 5  
INNER HARBOR EAST  
**BUILDING MODIFICATION  
DETAILS**

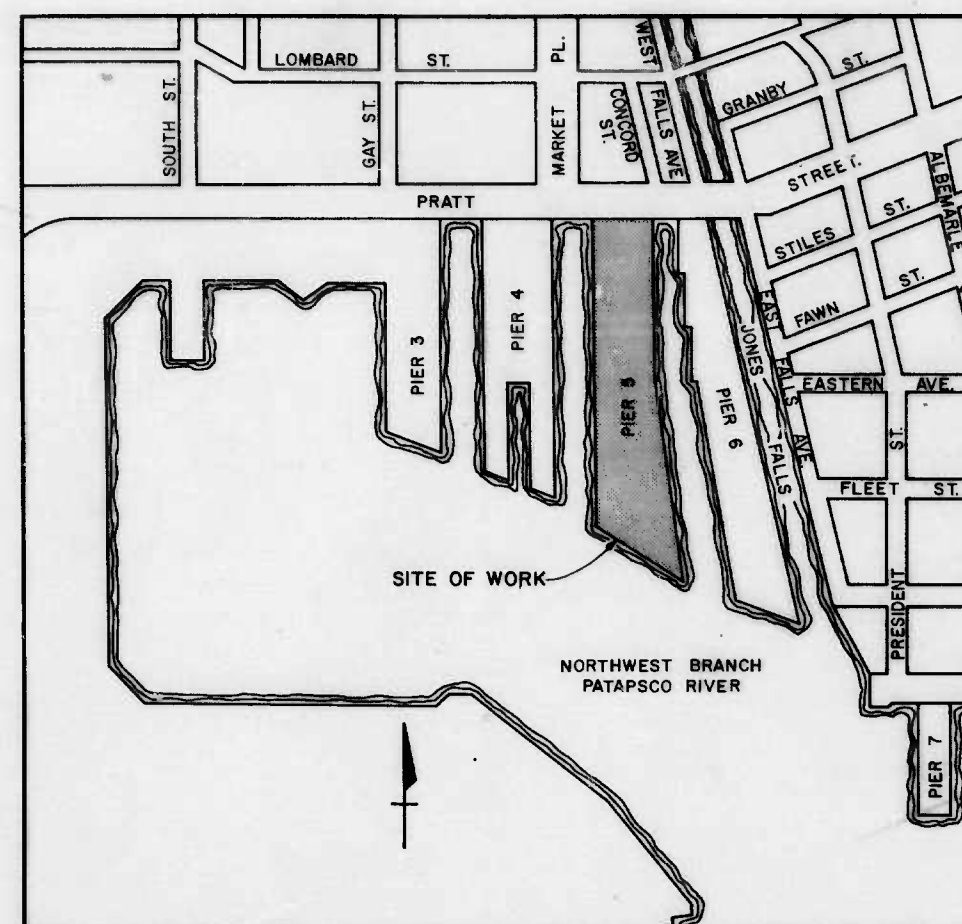
SCALE: AS SHOWN

DATE: APRIL 30, 1979

SHEET 10 OF 10

FILE REF.





LOCATION PLAN  
SCALE IN FEET  
0 200 400 600 800  
100 100 300 500 700

EXISTING	LEGEND	PROPOSED
12" S.D.	PAVING	
10" W.	STORM DRAIN & MH	
W.	STORM DRAIN INLETS	
W.V.	WATER MAIN	6" WATER
W.M.	WATER HYDRANT (UNDERGROUND)	6" VALVE
W.M.	WATER VALVE	
W.M.	WATER METER	
W.M.	FIRE HYDRANT	
SS.M.	SANITARY SEWER & MH	
B.C.C.	BALTO. CITY CONDUIT	
	GAS MAIN	
	C & P CONDUIT	
	LIGHT POLE (1 LUMINAIRE) (BY OTHERS)	
	LIGHT POLE (2 LUMINAIRES) (BY OTHERS)	
	WOODEN POLE WITH LUMINAIRE	
	HANDBOX	HB
	CONSTRUCTION BASE-LINE OR PROFILE GRADE LINE (P.G.L.)	2 3
	EXISTING BUILDING OR FACE OF PIER	
	BORING	

CITY OF BALTIMORE  
DEPARTMENT OF PUBLIC WORKS  
BUREAU OF ENGINEERING



CONTRACT NO. 2540

TEMPORARY PARKING  
PIER 5  
INNER HARBOR EAST

INDEX OF DRAWINGS

SHEET NO.	TITLE
1	TITLE SHEET
2	PAVING AND UTILITY PLAN - STATION -0+10 TO 6+10
3	PAVING AND UTILITY PLAN - STATION 6+10 TO 11+80
4	TYPICAL PAVING SECTIONS
5	CROSS SECTIONS
6	TYPICAL DETAILS
7	TYPICAL DETAILS
8	ELECTRICAL DETAILS
9	BUILDING MODIFICATION DETAILS
10	BUILDING MODIFICATION DETAILS

THE BUREAU OF ENGINEERING HAS REVIEWED THESE PLANS AND TAKES EXCEPTION TO THE FACT THAT CHARLES CENTER INNER HARBOR MANAGEMENT HAS MADE NO PROVISIONS FOR A PROTECTIVE RAILING AROUND THE PERIMETER OF THE PIER.



WHITMAN, REQUARDT & ASSOCIATES  
ENGINEERS  
1304 ST. PAUL STREET  
BALTIMORE, MARYLAND

4/27/79  
DATE

H. Hudson  
REG. NO. 2674

Francis M. Kautz  
DIRECTOR OF PUBLIC WORKS  
H. Green  
HEAD, BUREAU OF ENGINEERING

COMMISSIONER, HOUSING AND COMMUNITY DEVELOPMENT

William L. O'Keefe  
CHIEF, HIGHWAY ENGINEERING DIVISION  
James T. McLaughlin  
CHIEF, SURVEYS AND RECORDS  
M. J. Brodie

COMMISSIONER, TRANSIT AND TRAFFIC

W. K. Kautz  
CHIEF, WATER DIVISION  
H. O. Linn  
DIRECTOR, CONSTRUCTION AND BUILDING INSPECTION

John D. Lally  
CHIEF, WASTE WATER DIVISION  
J. J. Patridge  
SOIL EROSION / SEDIMENT CONTROL REP.

SHEET 1 OF 10