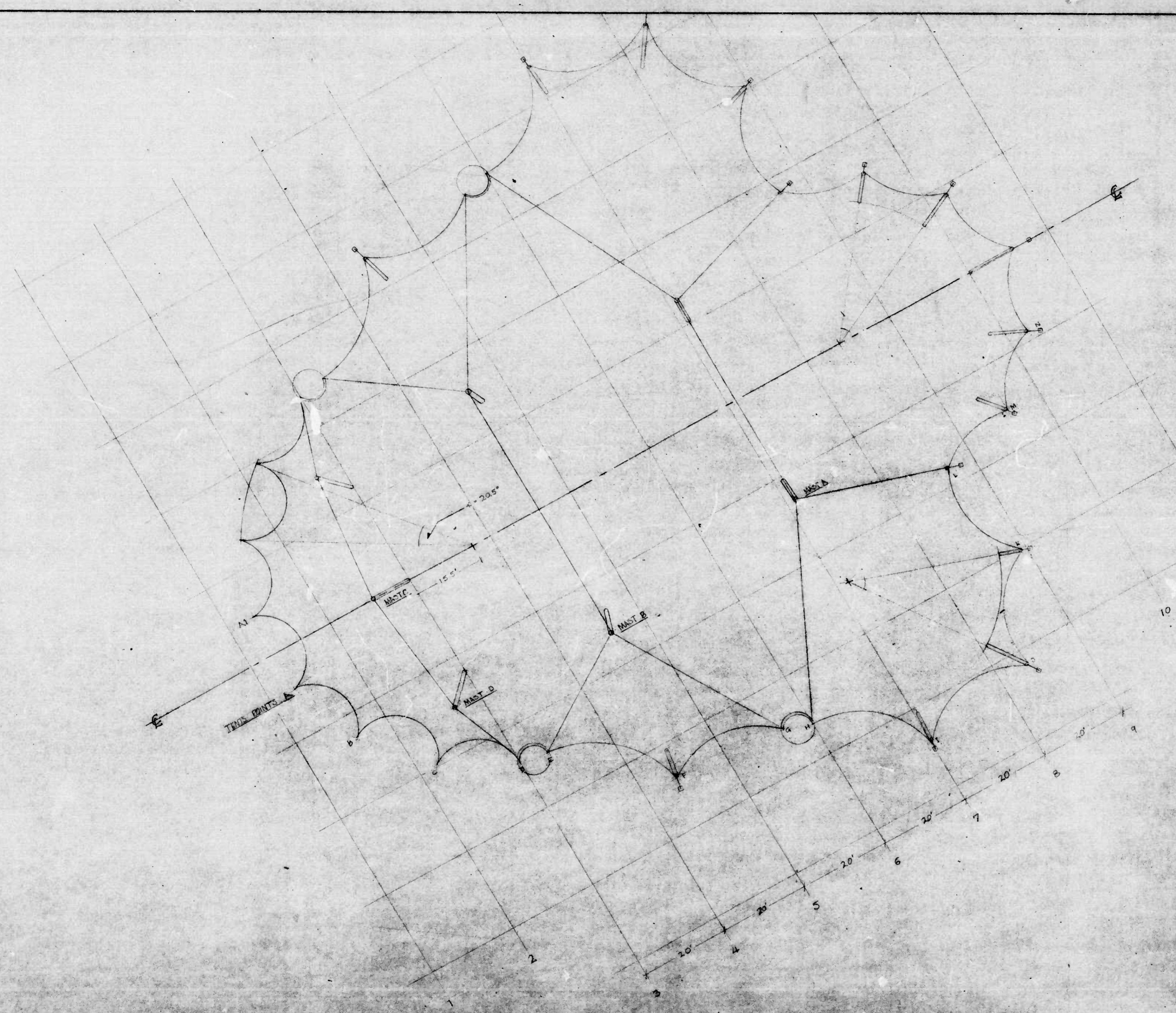
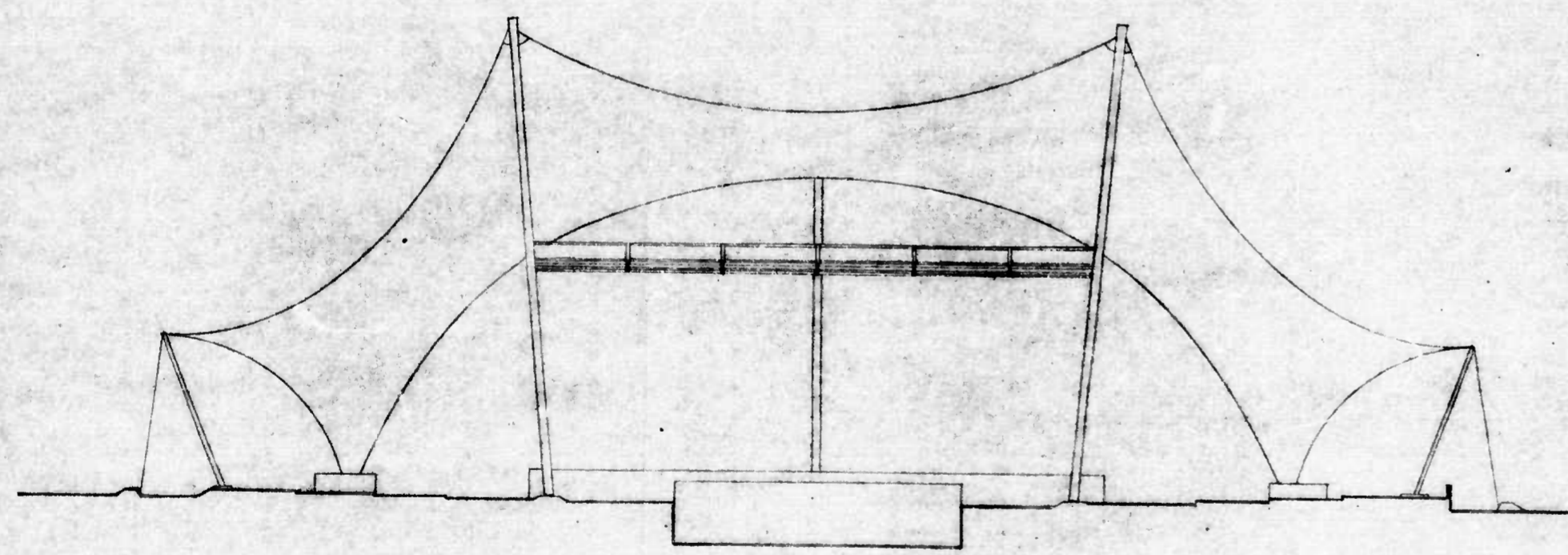
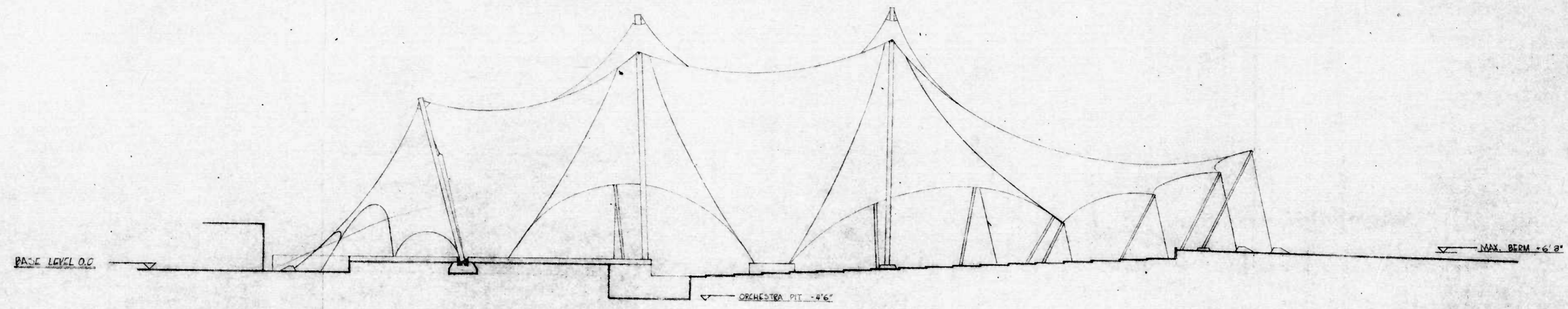


1-DF16



B	REVISED COLUMN BASE PTS.	01.19.80
A	GENERAL REVISION	01.14.80
BALTIMORE CONCERT TENT		
DATE	APPROVED BY	DRAWN BY
1/2/81		Wg
GENERAL TENT PLAN		
PUTNAM TENTS LTD. 37 MURRAY ST. NEW YORK, N.Y. 10003 212-782-4671		



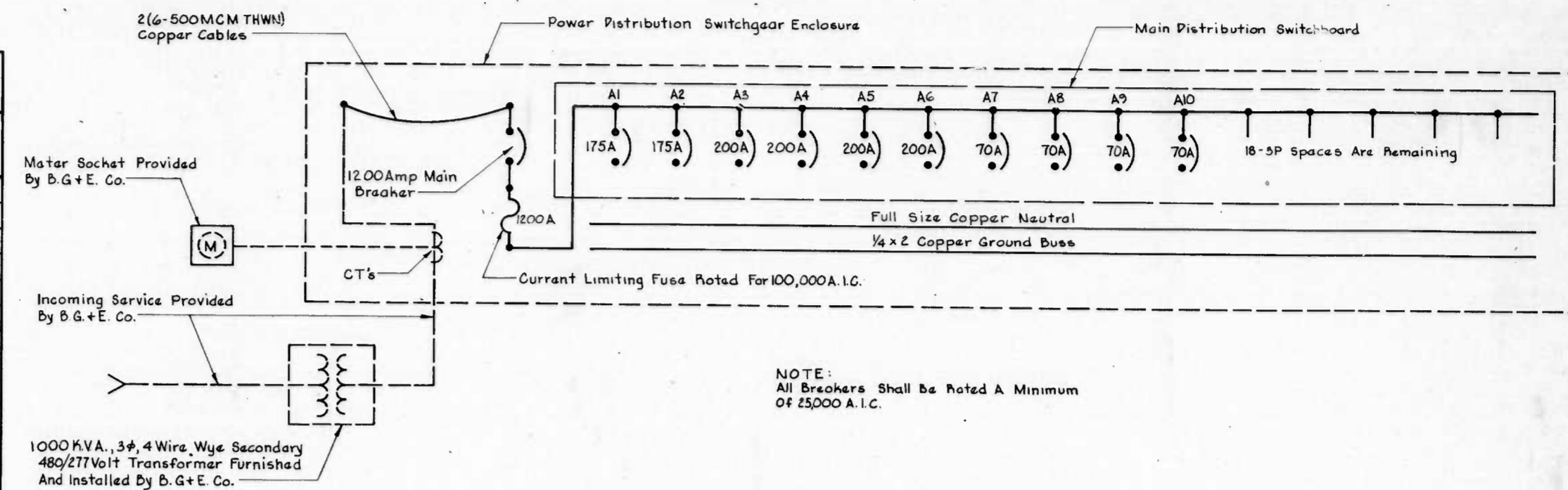
BALTIMORE CONCERT TENT		
SCALE: 1" = 1'	APPROVED BY:	DRAWN BY: K.G.
DATE: 01.22.51		
SECTIONS		
FUTURE TENTS LTD. 37 MURRAY ST. N.Y.C., N.Y. 10007. 212-752-4691		

30F16



POWER DISTRIBUTION SWITCHBOARD							
480/277 VOLTS, 3 PHASE, 4 WIRE ~ WEATHERPROOF, OUTDOOR							
CIRC. NO.	EQUIPMENT SERVED	PHASE AND VOLTS	CIRCUIT BREAKER		WIRING		REMARKS
			POLES	TRIP FRAME	SIZE	COND.	
	Metering Equip. Comp't.						Metering Equip. By B.G.+E. Co.
	Main Circuit Breaker	3 $\phi$ , 480V	3	1200A	1200A	2-500MCM (2 Per Phase) 2-3/4" Copper Grd.	
A1	112.5 KVA Transformer	3 $\phi$ , 480V	3	175A	225A		For Future Use
A2	112.5 KVA Transformer	3 $\phi$ , 480V	3	175A	225A		For Future Use
A3	Spare	3 $\phi$ , 480V	3	200A	225A		
A4	Spare	3 $\phi$ , 480V	3	200A	225A		
A5	Spare	3 $\phi$ , 480V	3	200A	225A		
A6	Spare	3 $\phi$ , 480V	3	200A	225A		
A7	Spare	3 $\phi$ , 480V	3	70A	100A		
A8	Spare	3 $\phi$ , 480V	3	70A	100A		
A9	Spare	3 $\phi$ , 480V	3	70A	100A		
A10	Spare	3 $\phi$ , 480V	3	70A	100A		

NOTE: 18-3P Spaces Are Remaining Within This Switchboard

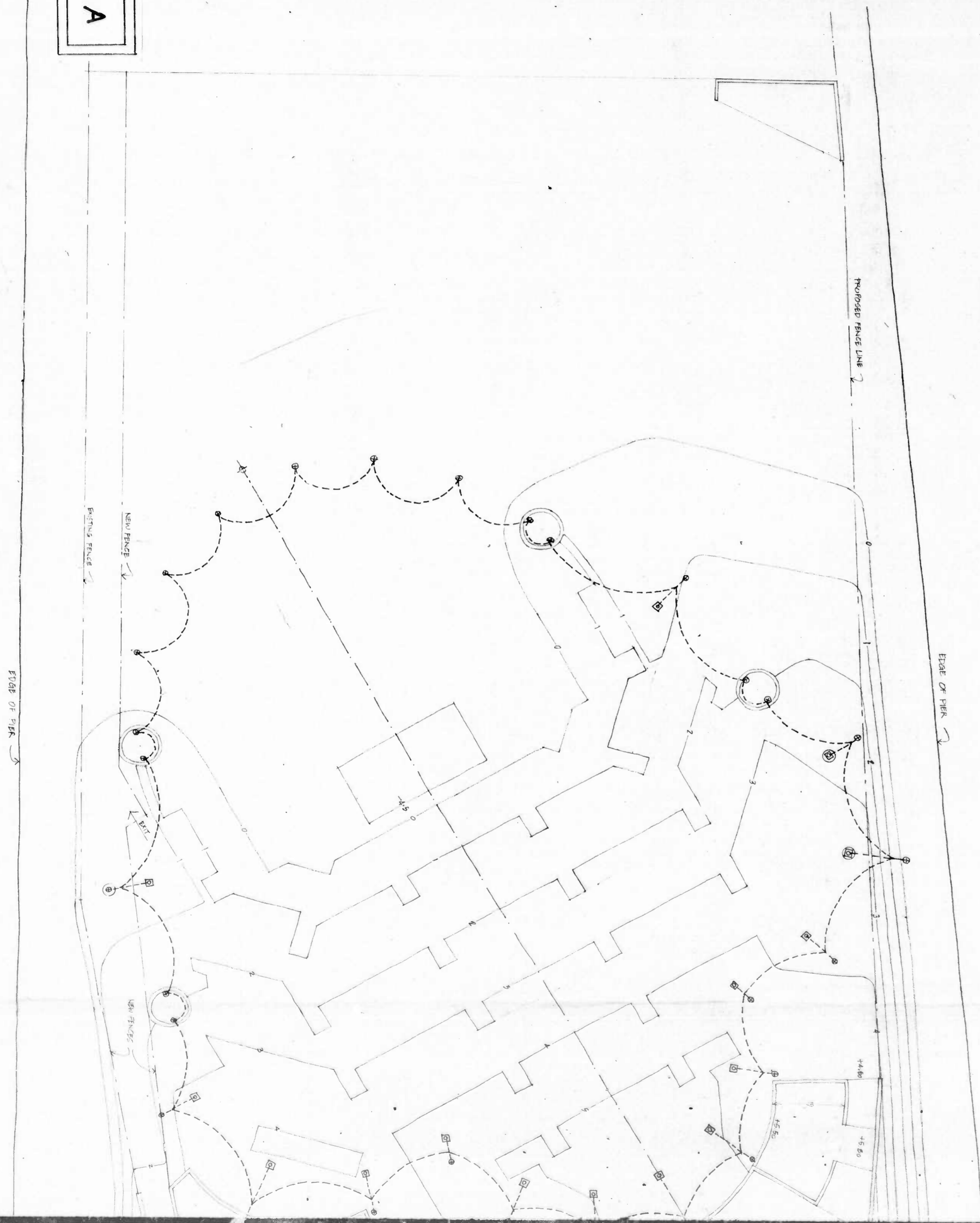


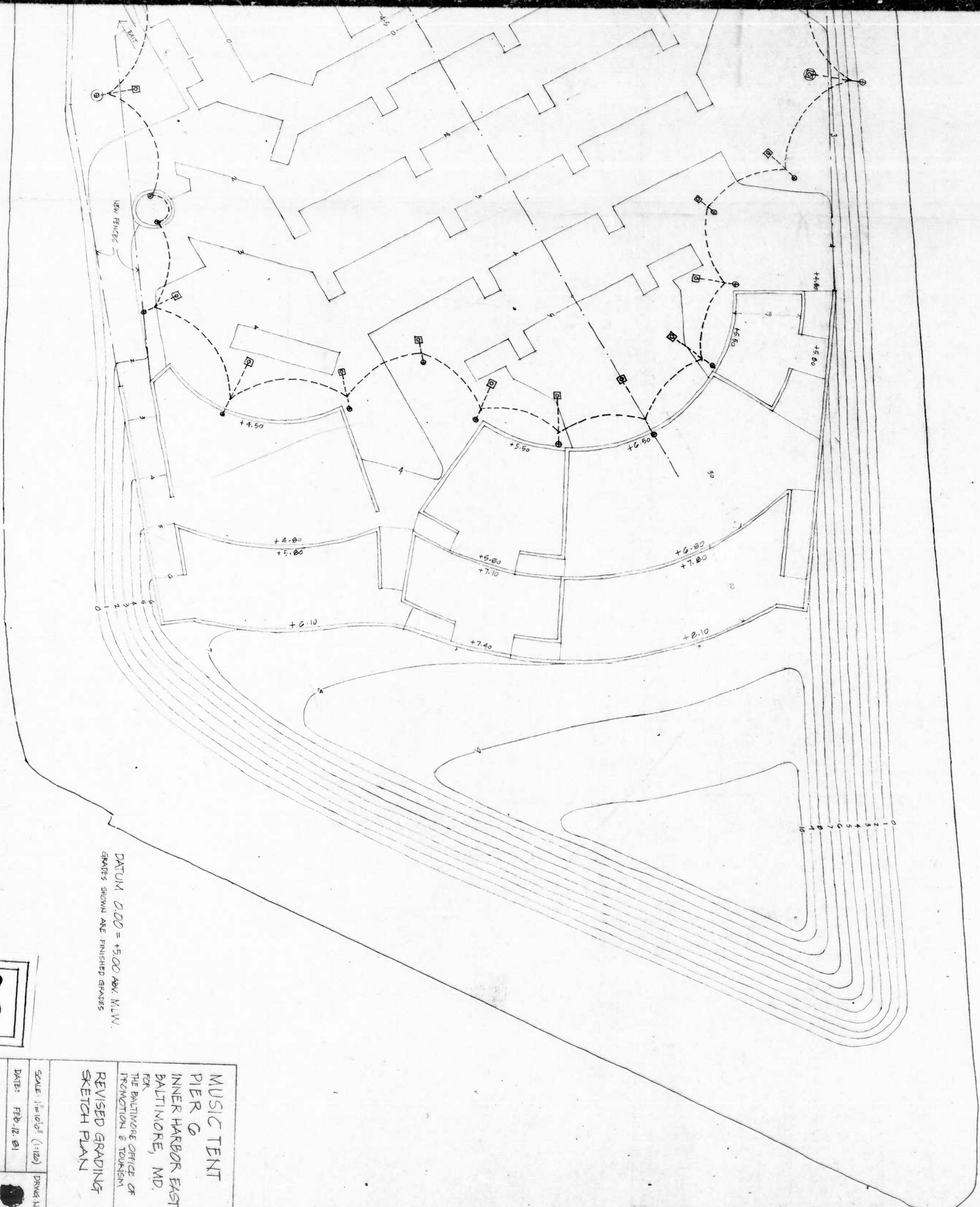
ONE LINE DIAGRAM ~ POWER DISTRIBUTION

ELECTRICAL LEGEND	
SYMBOLS	DESCRIPTION
	Base Line With Plus Station
	Existing Electrical Manhole
	Existing C+P Telephone Manhole
	Existing Electrical Conduits
	Existing Telephone Conduits
	Proposed Electrical Conduits
	Circuit Breaker

				<b>DEPARTMENT OF HOUSING AND COMMUNITY DEVELOPMENT</b> <b>CHARLES CENTER - INNER HARBOR MANAGEMENT INC.</b>		RUMMEL, KLEPPER & KAHL CONSULTING ENGINEERS BALTIMORE, MARYLAND				TITLE PIER - 6 POWER DISTRIBUTION SWITCHGEAR ONE LINE DIAGRAM / SCHEDULE	
NO	DATE	REVISION	BY					DATE MAY 22, 1981		DRAWN P.C.C. CHECKED D.C.B.	
										PROJ. & DWG. 	

9A





DATUM 0.00 = +5.00 AVY. M.L.W.  
 GRADES SHOWN ARE FINISHED GRADES

9 B

MUSIC TENT  
 PIER G  
 INNER HARBOR EAST  
 BALTIMORE, MD.  
 FOR  
 THE BALTIMORE OFFICE OF  
 PROMOTION & TOURISM

REVISED GRADING  
 SKETCH PLAN

SCALE: 1/8" = 1'-0" (1:120)  
 DATE: FEB. 12, 81

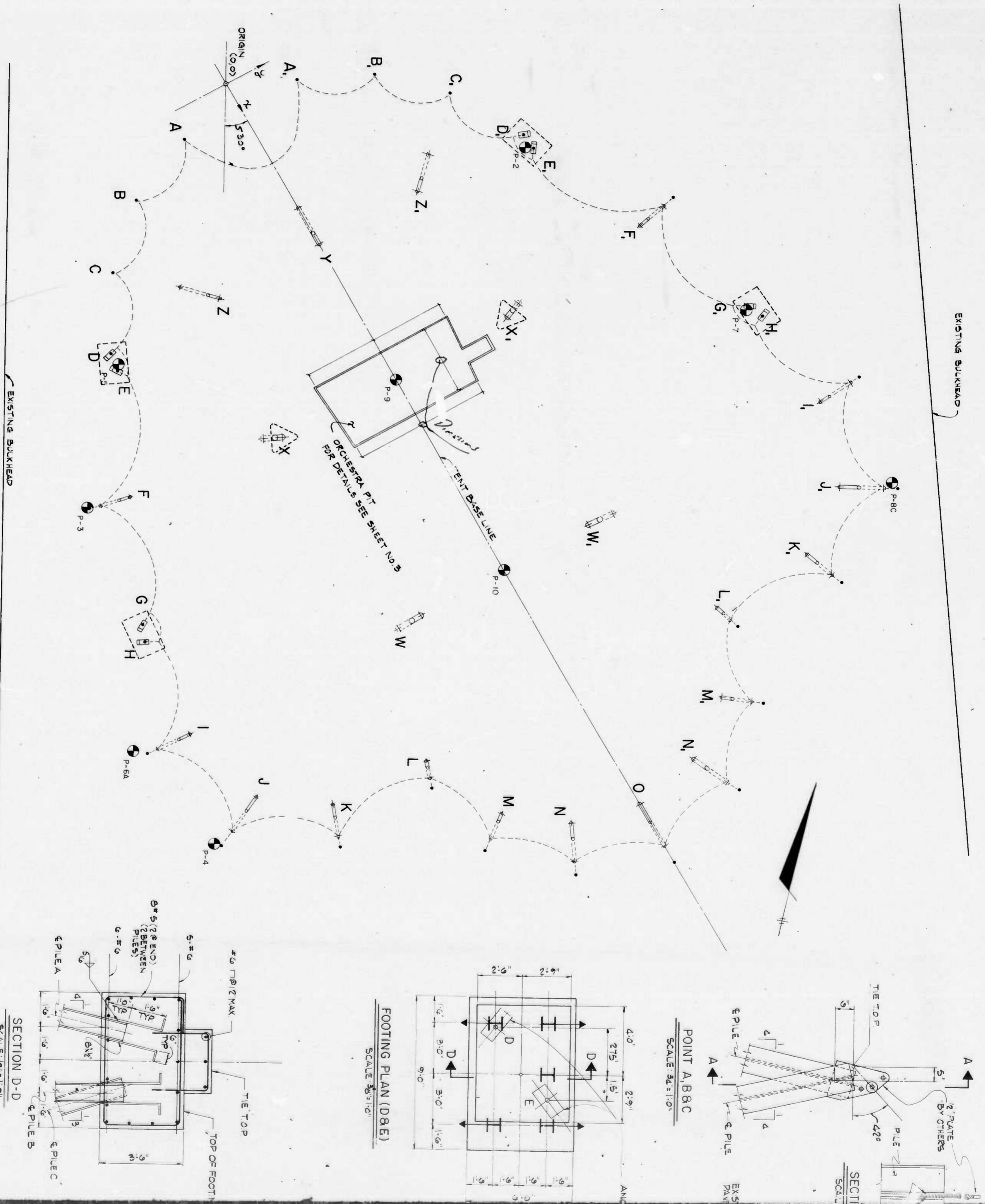
DRWG. NO. 9816

MULLEN BILLET ARCHITECT, INC.  
 6000E N. W. 11TH AVE.  
 BOCA RATON, FL 33433









POINT	TIE TOP		ELEVATION	TIE TOP OF FOOTING	DESIGN LOADS		PILE A		PILE B		PILE C	
	X	Y			V	Hx	Hy	LOAD	TIP ELEV	LOAD	TIP ELEV	LOAD
A	6.47	-13.50	6.81	14	17	-42	-45	28	-28			
B	13.45	-28.63	6.81	16	15	-39	-45	23	-28			
C	24.86	-40.64	6.81	18	12	-34	-42	16	-28			

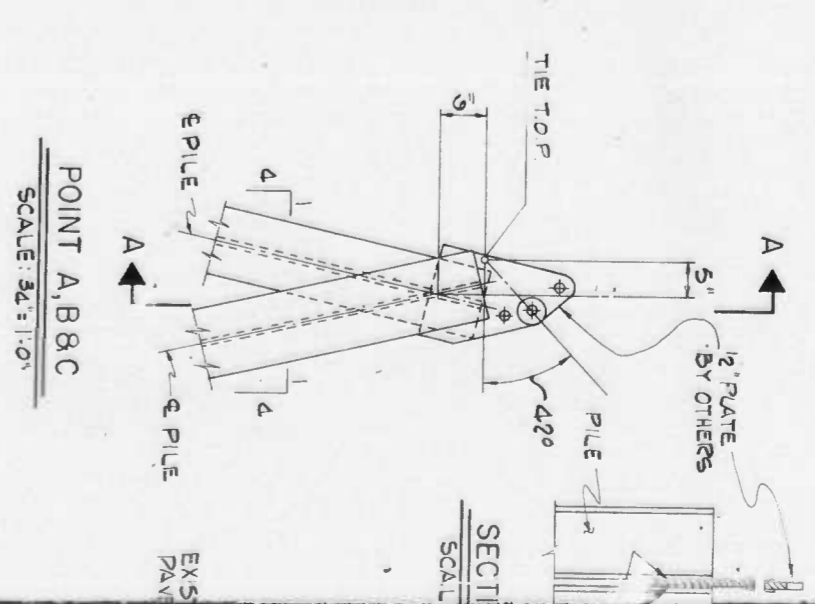
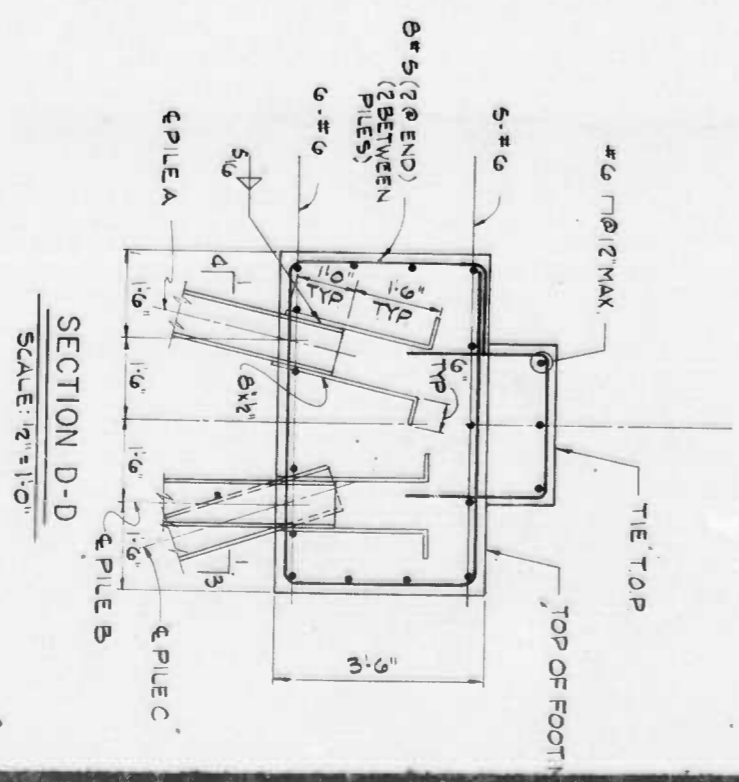
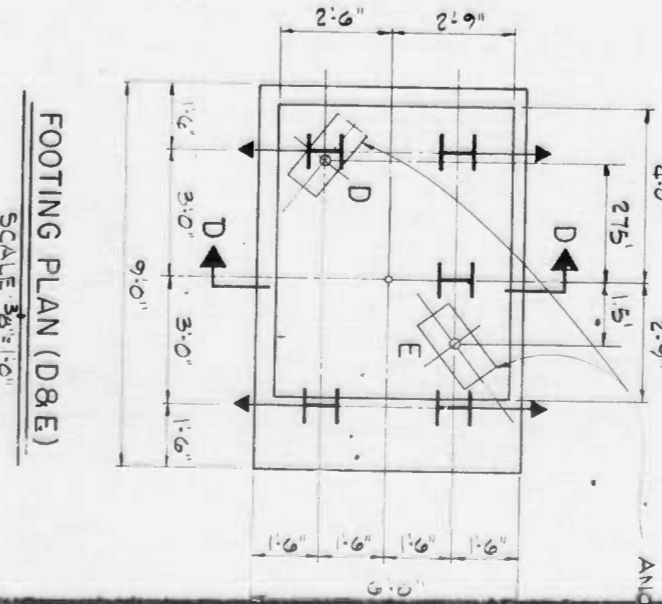
PLAN SCALE 1"=10'

NOTES:  
 1. COORDINATES, ELEVATIONS AND FOUNDATION LOADS OF TENT POINTS AS PROVIDED BY FUTURE TENTS LTD., 37 MURRY ST NEW YORK CITY NY 10007.  
 ALL LOADS GIVEN ARE IN KIIPS  
 2. FOR ADDITIONAL DETAILS OF TENT SEE DRAWINGS BY WILLIAM GILLITT, ARCHITECTS, INC. 66 LONG WHARF, STE. 66-SN BOSTON MA 02110

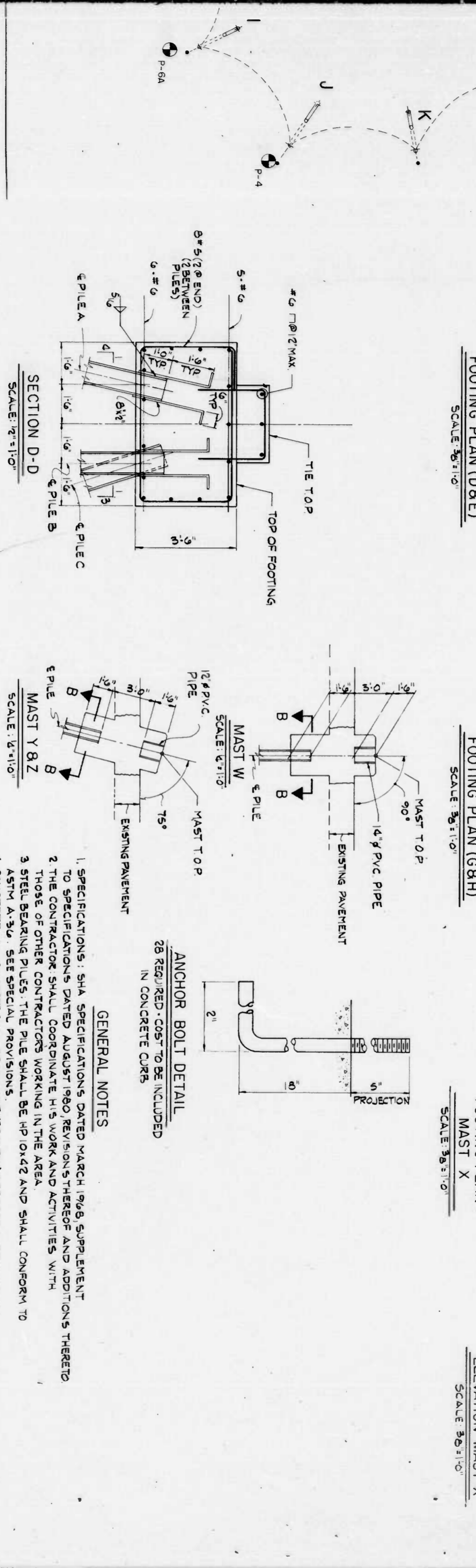
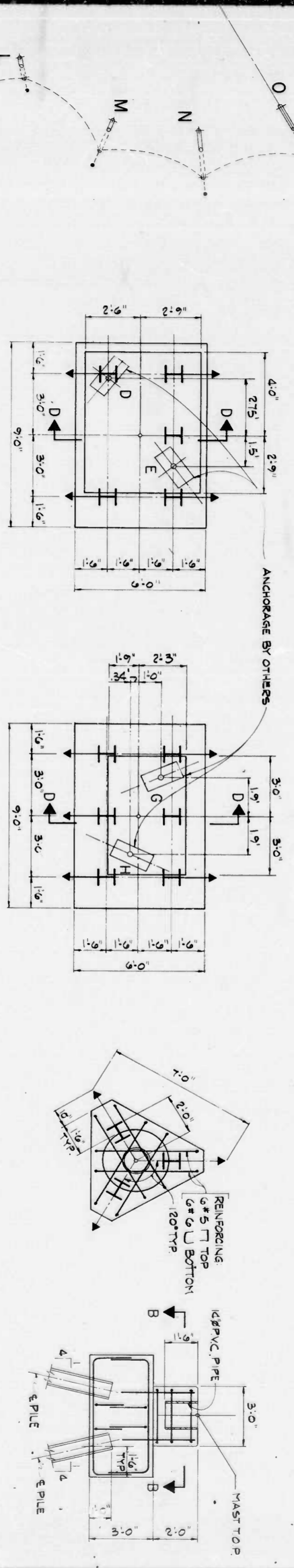
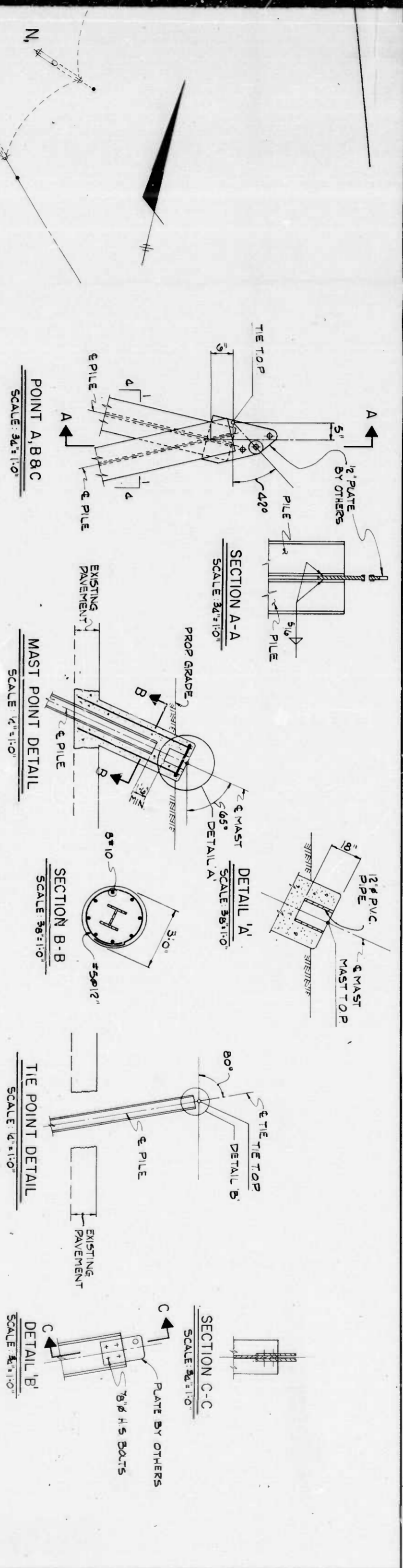
POINT	TIE TOP		ELEVATION	TIE TOP OF FOOTING	DESIGN LOADS		PILE A		PILE B		PILE C	
	X	Y			V	Hx	Hy	LOAD	TIP ELEV	LOAD	TIP ELEV	LOAD
D	39.83	-50.00	6.81	4.81	95	31	41	-60	-53	-50	70	-35
E	44.70	-50.10										
G	95.20	-72.78	9.47	6.31	112	-1	-98	-60	-54	-40	90	-35
H	99.00	-74.12										

POINT	MAST TOP		MAST LOAD	PILE TIP ELEV	TIE TOP		TIE LOAD	PILE TIP ELEV		
	X	Y			X	Y				
F	69.25	-6.29	8.21	52	-35	67.43	-70.68	8.51	-57	-53
I	121.51	-76.26	10.66	55	-25	120.74	-85.96	10.41	-54	-51
J	139.86	-70.69	11.21	45	-29	145.78	-81.57	11.81	-40	-45
K	149.53	-57.29	11.21	35	-26	138.44	-82.36	11.01	-38	-44
L	150.54	-94.92	11.41	20	-26	155.27	-36.40	11.61	-59	-50
M	168.30	-26.25	12.06	55	-31	173.40	-36.33	11.81	-59	-50
N	177.45	-14.23	12.46	53	-31	187.89	-19.44	12.66	-48	-45
O	180.53	-0.00	13.01	50	-30	194.87	0.00	13.81	-40	-41

POINT	MAST TOP		MAST LOAD	PILE TIP ELEV
	X	Y		
W	121.75	-20.00	9.14	80
X	73.50	-27.50	6.81	102
Y	40.00	0.00	6.81	25
Z	40.00	-24.00	6.81	22



11A



FOUNDATION LOADS OF TENT POINTS AS PROVIDED BY ST. NEW YORK CITY NY 10007.  
 SEE DRAWINGS BY WILLIAM GULLITT, SITE, 66-5N BOSTON MA, 02110.

TIE POINTS

PILE ST TIP AND ELEV	TIE TOP X	TIE TOP Y	TIE TOP ELEV	TIE LOAD	PILE TIP ELEV
2 -35	0745	-7048	8.51	-57	-53
3 -28	0074	-8590	10.41	-54	-51
3 -29	1457	-8157	11.81	-40	-45
5 -28	13844	-8036	11.01	-38	-44
0 -26	1557	-3640	11.61	-59	-50
0 -31	17340	-3283	11.81	-59	-50
5 -31	18789	-1944	12.66	-48	-45
0 -30	19482	000	13.81	-40	-41

POINT	MAST TOP X	MAST TOP Y	MAST TOP ELEV	MAST LOAD	PILE TIP ELEV
W	12175	-2000	9.14	80	-35
X	7356	-2750	6.81	102	-37
Y	4000	000	6.81	23	-28
Z	4000	-2400	6.81	22	-28

GENERAL NOTES

- SPECIFICATIONS DATED MARCH 1968 SUPPLEMENT TO SPECIFICATIONS DATED AUGUST 1960 REVISIONS THEREOF AND ADDITIONS THERETO.
- THE CONTRACTOR SHALL COORDINATE HIS WORK AND ACTIVITIES WITH THOSE OF OTHER CONTRACTORS WORKING IN THE AREA.
- STEEL BEARING PILES: THE PILE SHALL BE HP10X42 AND SHALL CONFORM TO ASTM A-36. SEE SPECIAL PROVISIONS.
- CONCRETE: ALL CONCRETE SHALL BE MIX NO. 3 (3500 PSI) SEE SPECIAL PROVISIONS.
- REINFORCING STEEL: REINFORCING STEEL SHALL CONFORM TO ASTM DESIGNATION A716'S GRADE 40 AND/OR GRADE 60. ALL SPLICES SHALL BE LAPPED A MINIMUM OF 50 BAR DIAMETERS UNLESS OTHERWISE NOTED. MINIMUM COVER FOR ANY BAR SHALL BE 2" UNLESS OTHERWISE NOTED.
- BENCH MARK: T866 ELEV. 8.673.
- SQUARE CUT IN STONE DOOR CILL ON WEST SIDE OF 5 STORY BRICK BUILDING, NORTH EAST OF E. FALLS AVE. AND ALICEAUNE ST., 5 FT FROM SOUTH END AND 0.7 FT FROM W. FACE.

ANCHOR BOLT DETAIL  
 28 REQUIRED - COST TO BE INCLUDED IN CONCRETE CURS

11 B

**MUSIC TENT**  
**PIER 6**  
**INNER HARBOR EAST**  
**BALTIMORE, MD.**  
 FOR THE  
 BALTIMORE OFFICE OF  
 PROMOTION & TOURISM  
 AND THE  
 BALTIMORE SYMPHONY  
 ORCHESTRA

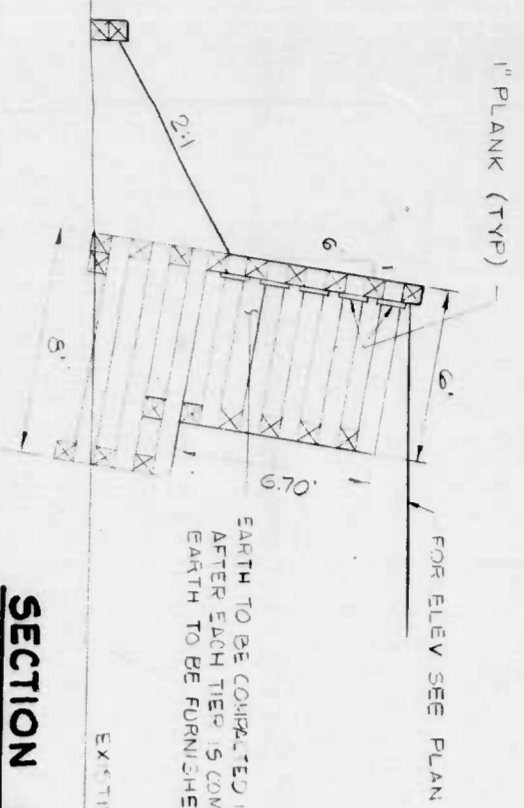
**FOUNDATION PLAN**  
**AND**  
**DETAILS**

SCALE: AS NOTED  
 DATE: MARCH 1981  
 SHEET NO. [REDACTED]

CENTURY ENGINEERING, INC.  
 CONSULTING ENGINEERS - PLANNERS  
 TOWSON, MARYLAND

110716



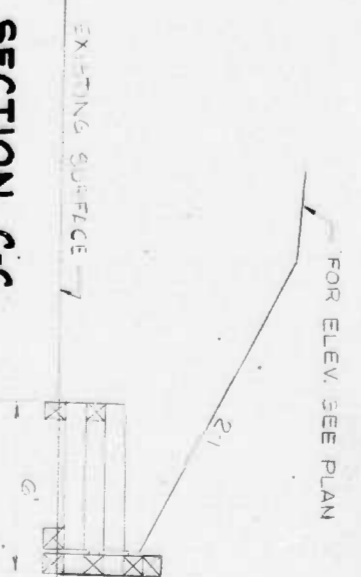


EARTH TO BE COMPLETED IN PLACE AFTER EACH TIER IS COMPLETED (TYP). EARTH TO BE FURNISHED BY OTHERS.

**SECTION B-B**

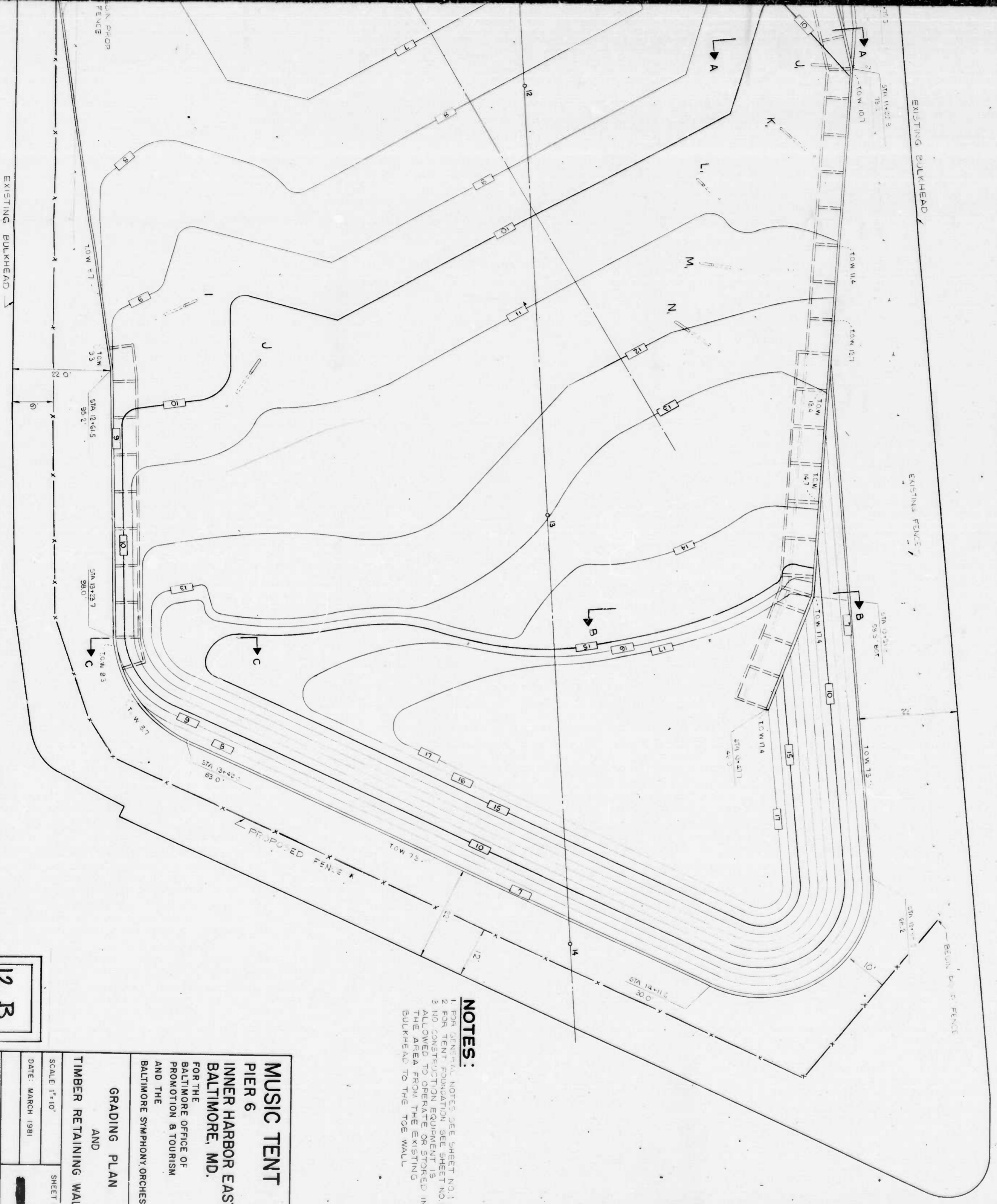
**TIMBER RETAINING WALL DETAILS**

SCALE: 1"=4'



FOR ELEV. SEE PLAN

**SECTION C-C**



\* PROPOSED FENCE TO BE OF SAME QUALITY AND SIZE AS EXISTING FENCE

- NOTES:**
- 1 FOR GENERAL NOTES SEE SHEET NO. 1
  - 2 FOR TENT FOUNDATION SEE SHEET NO. 1
  - 3 NO CONSTRUCTION EQUIPMENT IS ALLOWED TO OPERATE OR STORED IN THE AREA FROM THE EXISTING BULKHEAD TO THE TCE WALL

**MUSIC TENT  
PIER 6  
INNER HARBOR EAST  
BALTIMORE, MD.**

FOR THE  
BALTIMORE OFFICE OF  
PROMOTION & TOURISM  
AND THE  
BALTIMORE SYMPHONY ORCHESTRA

**GRADING PLAN  
AND  
TIMBER RETAINING WALLS**

SCALE: 1"=10'  
DATE: MARCH 1981  
SHEET NO. **12 B**

CENTURY ENGINEERING, INC.  
CONSULTING ENGINEERS - PLANNERS  
TOWSON, MARYLAND

12 OF 16

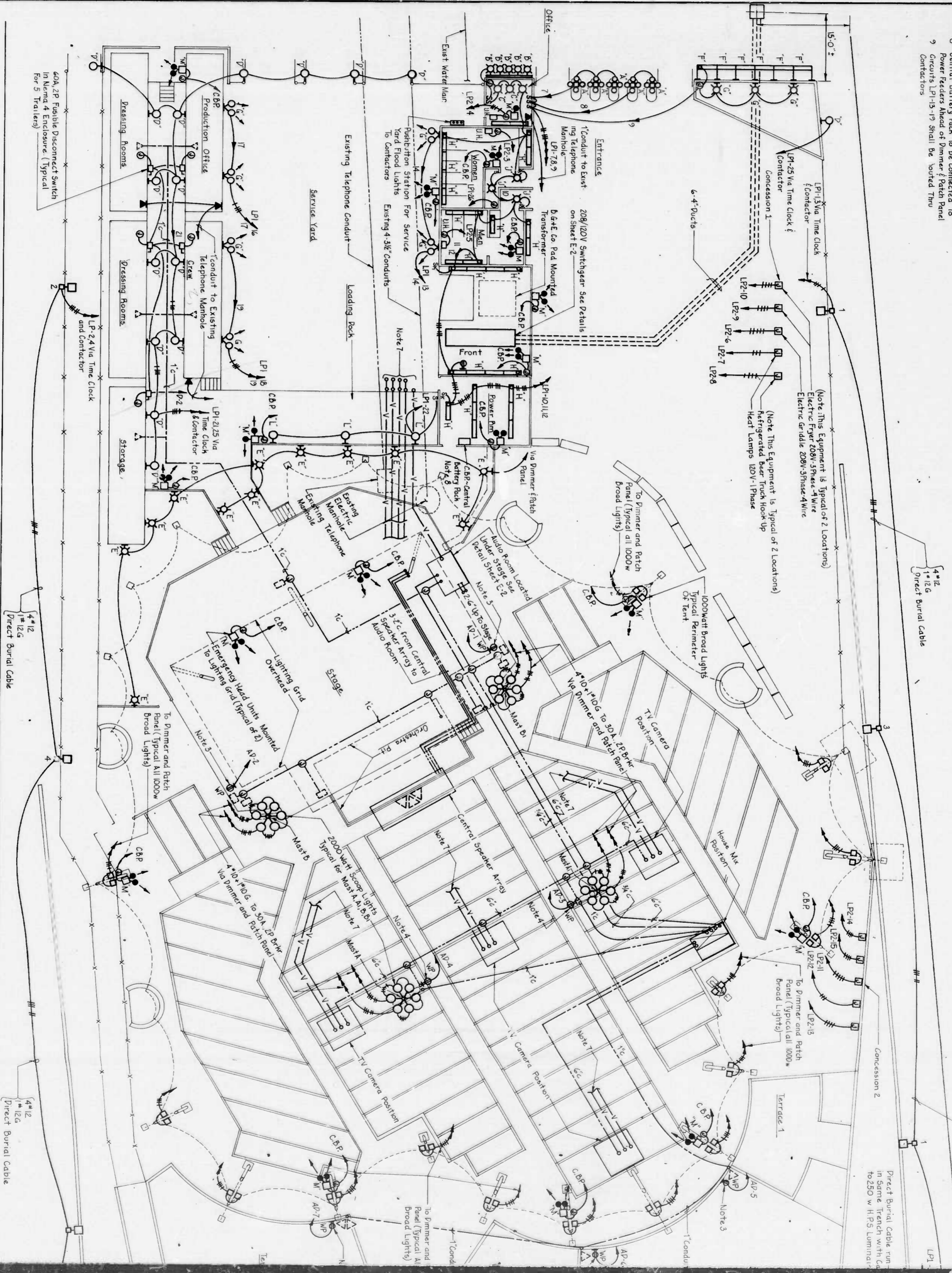




- DRAWING NOTES**
1. All Receiving Run Exposed On-Trip Pole shall Be EMT. Provide Burial Cable in 3" x 6" x 1/2" or UF And Be Used Where Accessible By The N.E. Fire or UF
  2. All Power and Audio Feeders Serving Trailers Shall Be Run Under Loading Dock and Back.
  3. Provide One 20A Duplex Receptacle Stub-Up @ Above Stage or Grade
  4. Provide One 20A Duplex Receptacle Mounted Near Field
  5. 4" Ducts to Terminate in 3"x3"x1/2" Precast Pullbox
  6. Be Provided for the Service of The City Fair.
  7. Square of Ceiling @ MAIN 2ND FLOOR OR APPROX. EQUAL, Located in the Box Office and Men's Women Rest Room.
  8. Provide 9' @ Conduits For Video Cable Needs. 2" @ Conduits to Stub-Up AT Each TV Camera Position And 1" @ Conduit to Terminate AT Audio Rm. All 9' @ Conduits to Stub-Up @ Above Finish Grade AT Race Or Loading Dock.
  9. Central Battery Rack to be Connected To Power Feeders Ahead of Dimmer Patch Panel
  10. Circuits LP1-19 shall be routed thru Conduits

TYPE	DESCRIPTION	LAMPS	MOUNTING HEIGHT	MANUFACTURER AND CATALOG NUMBER	TYPE	DESCRIPTION	LAMPS	MOUNTING HEIGHT	MANUFACTURER AND CATALOG NUMBER
A	Pole Mounted Spherical Lantern With Incandescent Lamps	256-40W Clear	Pole Height	McPhibson 1092402 P-SM Pole Base M42 TH5	J	Wall Mounted Incandescent Decorative Cylinder Fixture	4-1/2 50W	Ceiling	Keane/Stoneline F50783
B	Surface Mounted Incandescent Plugload 2000 Series	256/25W White	Box Office	Vernold - Plugload 2000 With 240V/1000V Socket & On Center	K	Fluorescent Low Level Fixture	2-8 1/2 50W	1'-0" Above Finish Grade	McPhibson 33-55AFC With Splice Box P-3171
C	Ceiling Mounted Incandescent Recurve of the Sphere Fixture	A21 150W	Ceiling	Keane/Stoneline P4883	L	Wall Mounted Pendant Luminaire/High Pressure Sodium	50WATT H.F.S.	9'-0" Above Finish Floor	Appleton 6-6745CL-MTLR With Bracket 6-GWP
D	Wall Mounted Pendant Luminaire/High Pressure Sodium	A19 100W	9'-0" Above Finish Grade	Appleton 6-6725CL-MTLR With Heavy/Stoneline P4181	M	Battery Operated Remote Emergency Heads (2/Per Unit)	2-25W Halogen	5'-0" Above Finish Grade	
E	Wall Mounted Incandescent Decorative Cylinder Fixture	A19 100W	5'-0" Above Finish Grade	Keane/Stoneline P4181					
F	Wall Mounted Incandescent Decorative Cylinder Fixture	A19 100W	5'-0" Above Finish Grade	Keane/Stoneline P4181					
G	Wall Mounted Quartz Iodine Flood Head Flood Light	5000/CL	5'-0" Above Finish Grade	Crouse-Hinds 8651-V4P With 1200-1/4" Ballast					
H	Wall Mounted Fluorescent Single Tube Fixture	H148T12 W/120/MS	Corner or Ceiling Mounted	Appleton 6-6745CL-MTLR With Bracket 6-GWP					

**LIGHTING FIXTURE SCHEDULE**

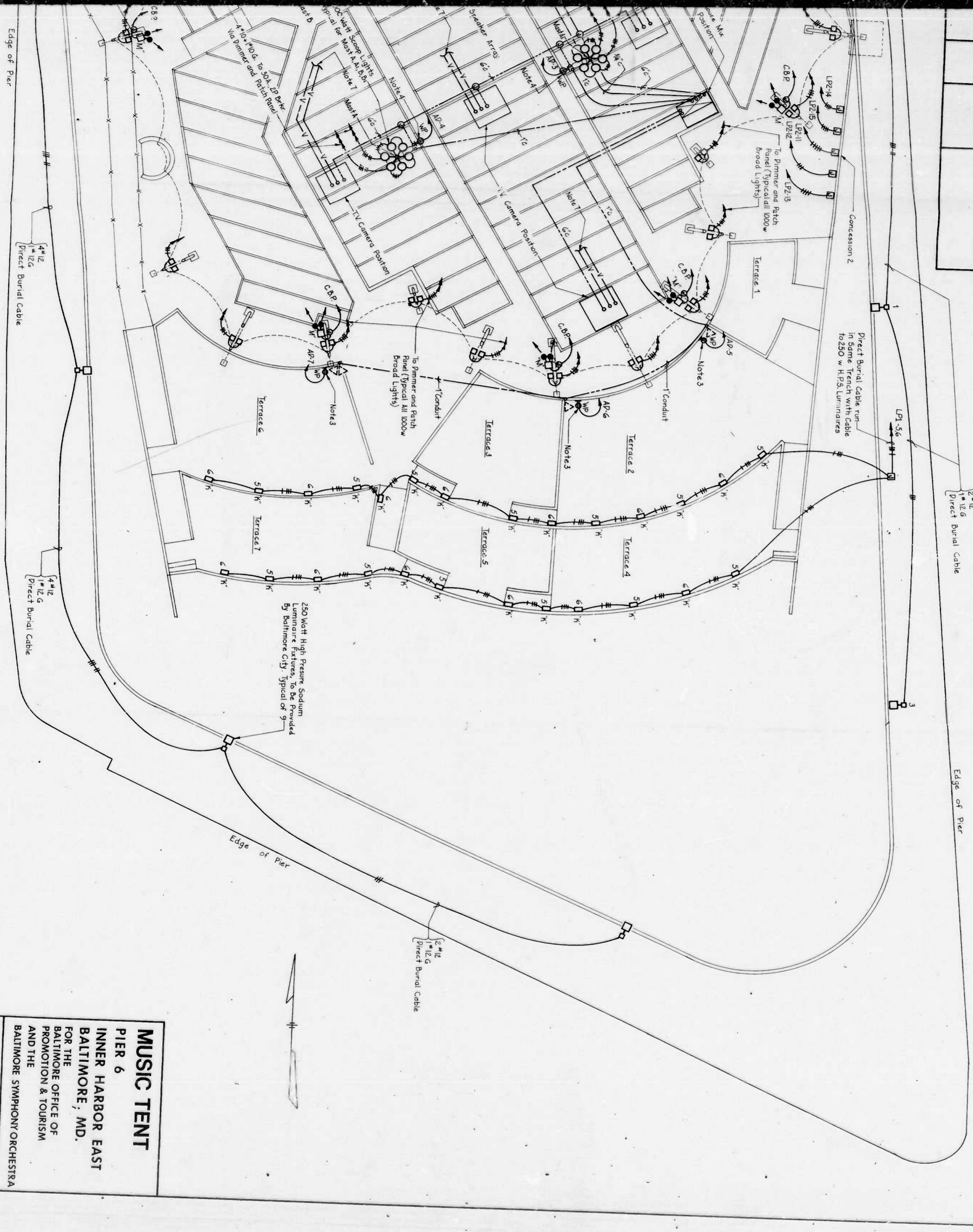


14 A

10-11' Locations  
30 850' Ltr.  
20' 50' to 110' 20' 50'



LAMPS	MOUNTING HEIGHT	MANUFACTURER AND CATALOG NUMBER
A19 50W	Ceiling	Keane / Shenolik Pac0785
250 W T5 Fluor	1'-0" Above Finish Grade	Mc Phibben 3355AFE with Splice Box P-317
150 W T5 H.P.S.	10'-0" Above Finish Floor	Application 6-6745GL MTLR with Bracket 6-6WD-1
225W T5	6'-0" Above Finish Grade	
Hydrogen		



**MUSIC TENT**  
**PIER 6**  
**INNER HARBOR EAST**  
**BALTIMORE, MD.**  
 FOR THE  
 BALTIMORE OFFICE OF  
 PROMOTION & TOURISM  
 AND THE  
 BALTIMORE SYMPHONY ORCHESTRA

**ELECTRICAL PLAN**  
**LIGHTING AND POWER**

SCALE 1" = 10'-0"  
 DATE MARCH 30, 1961

DRWG NO. [Redacted]  
 SHEET OF [Redacted]

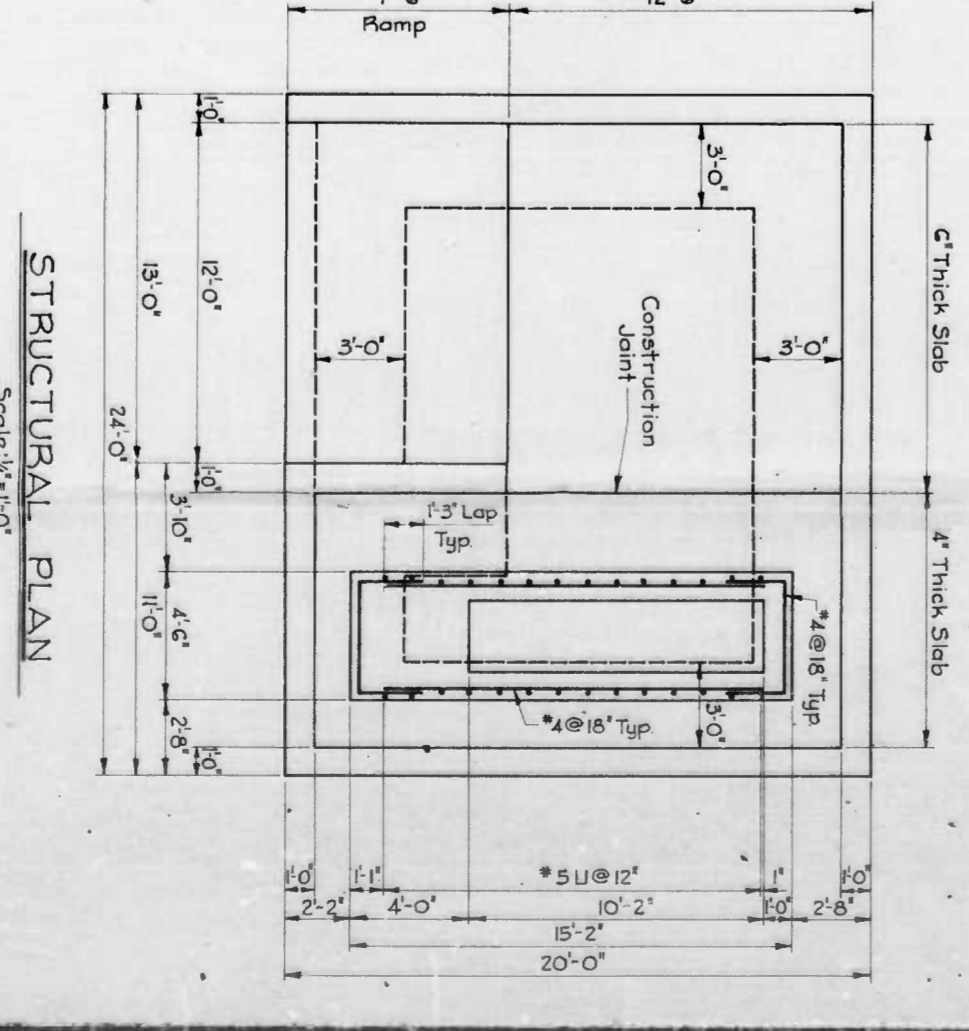
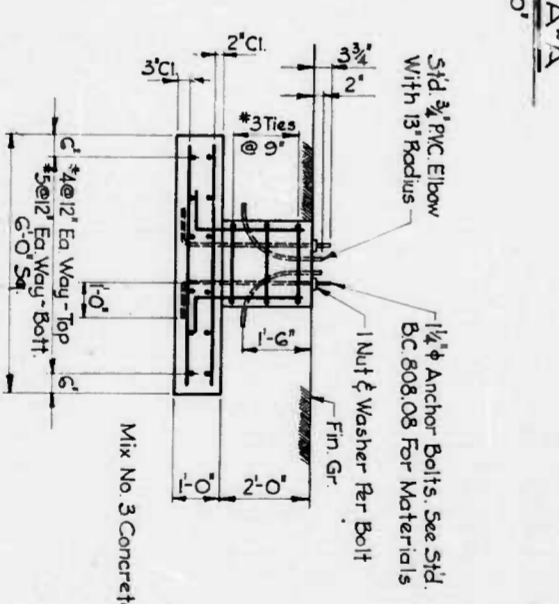
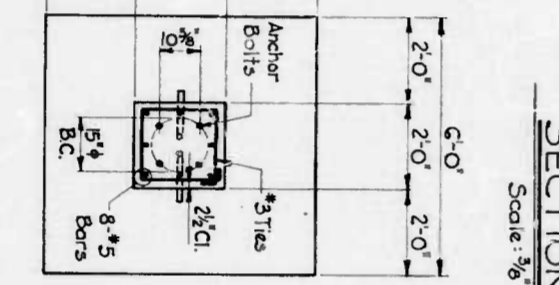
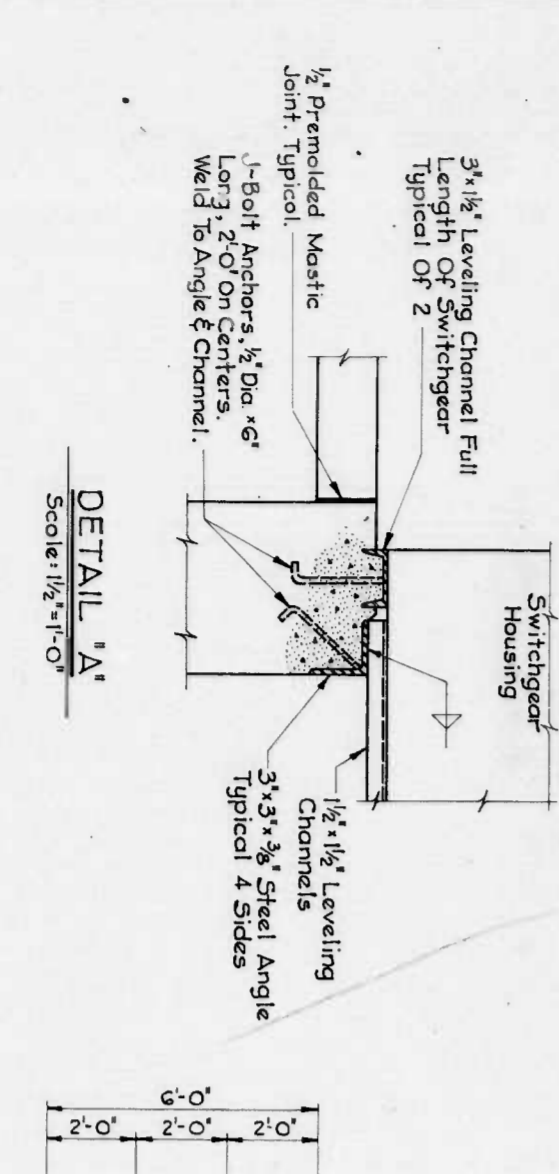
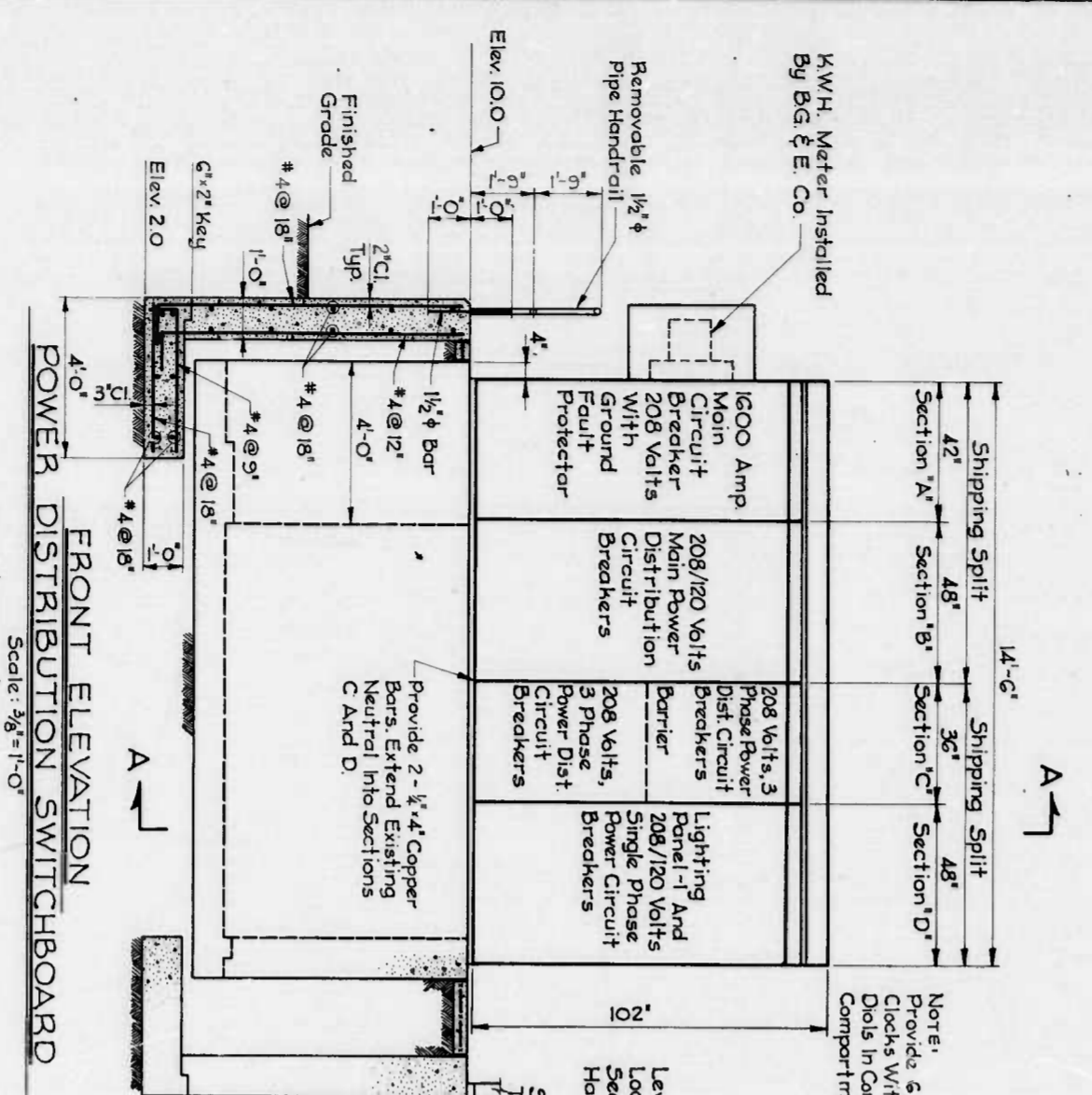
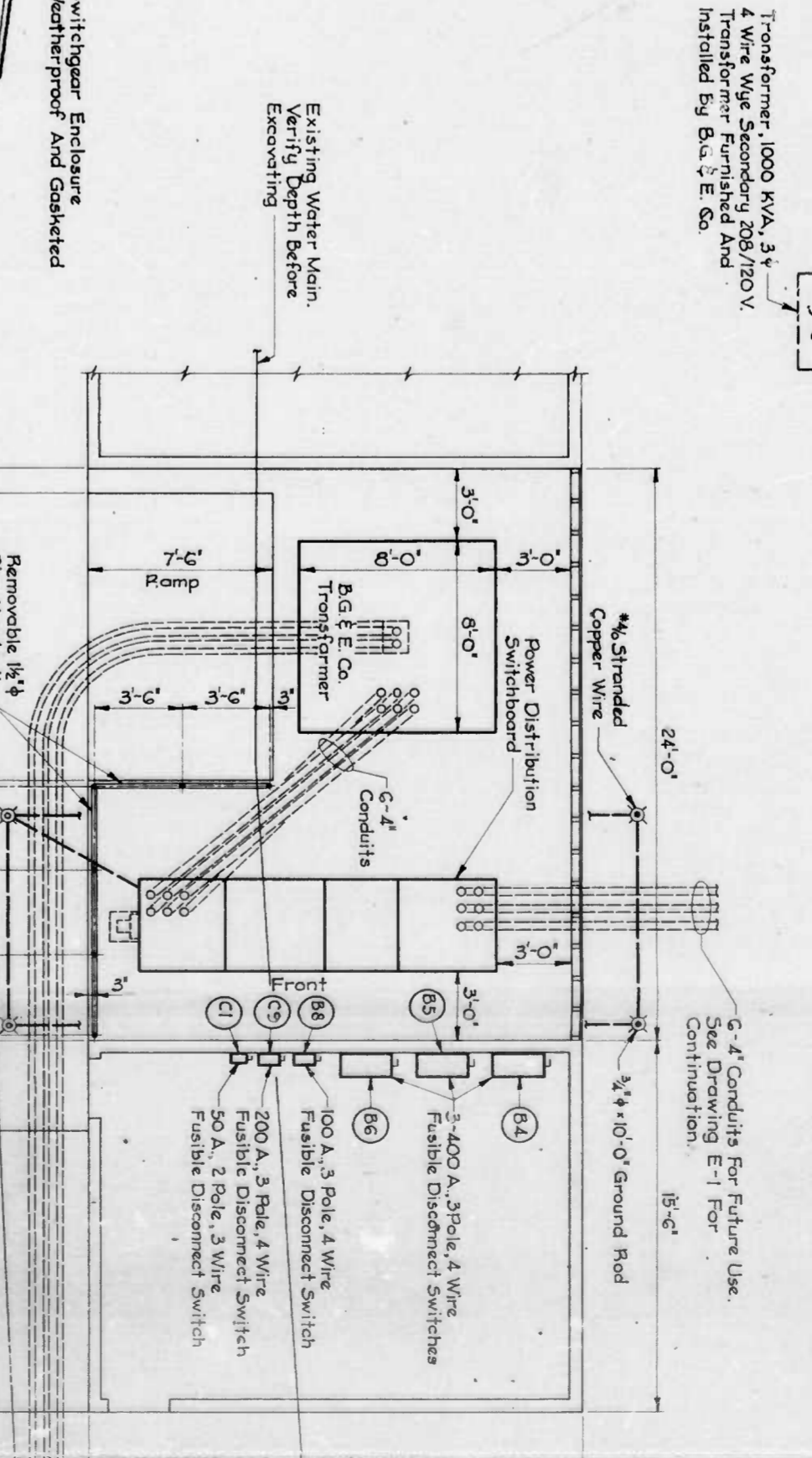
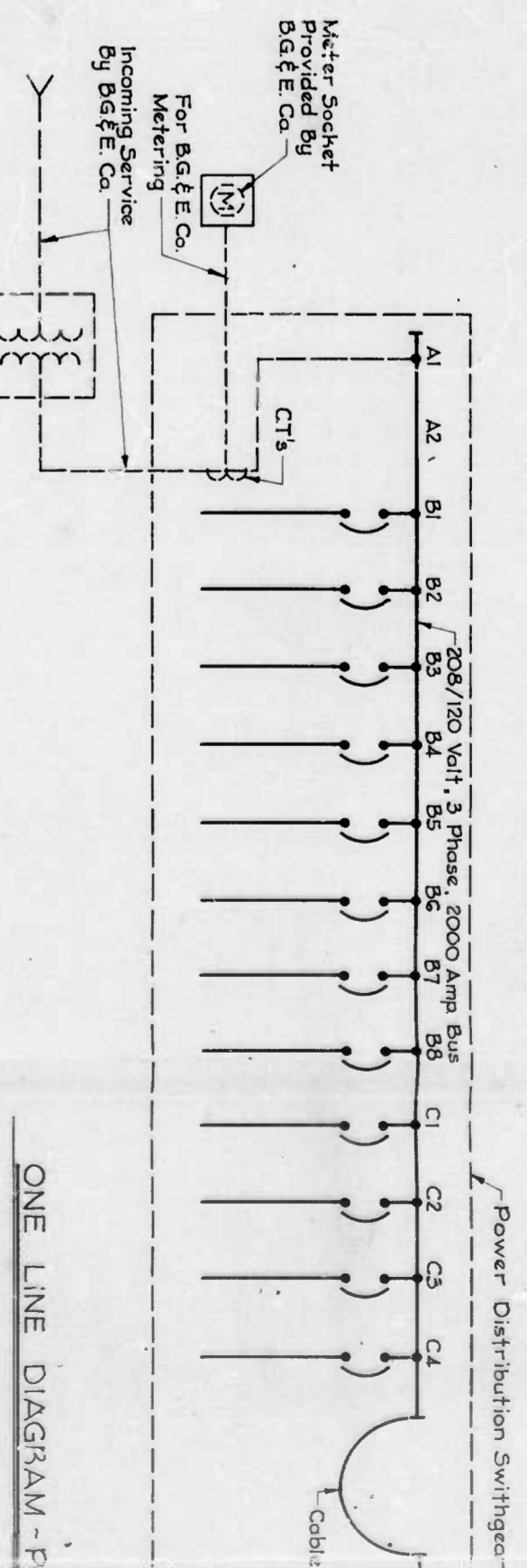
RUMMEL, KLEPPER & KAHL  
 CONSULTING ENGINEERS  
 BALTIMORE, MD.

14 B

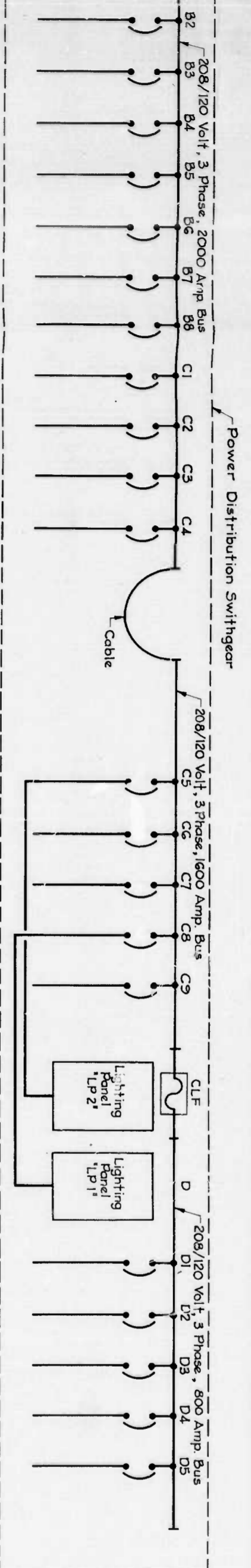
11/20/61

POWER DISTRIBUTION SWITCHBOARD  
208/120 VOLTS, 3 PHASE, 4 WIRE - WEATHERPROOF, OUTDOOR

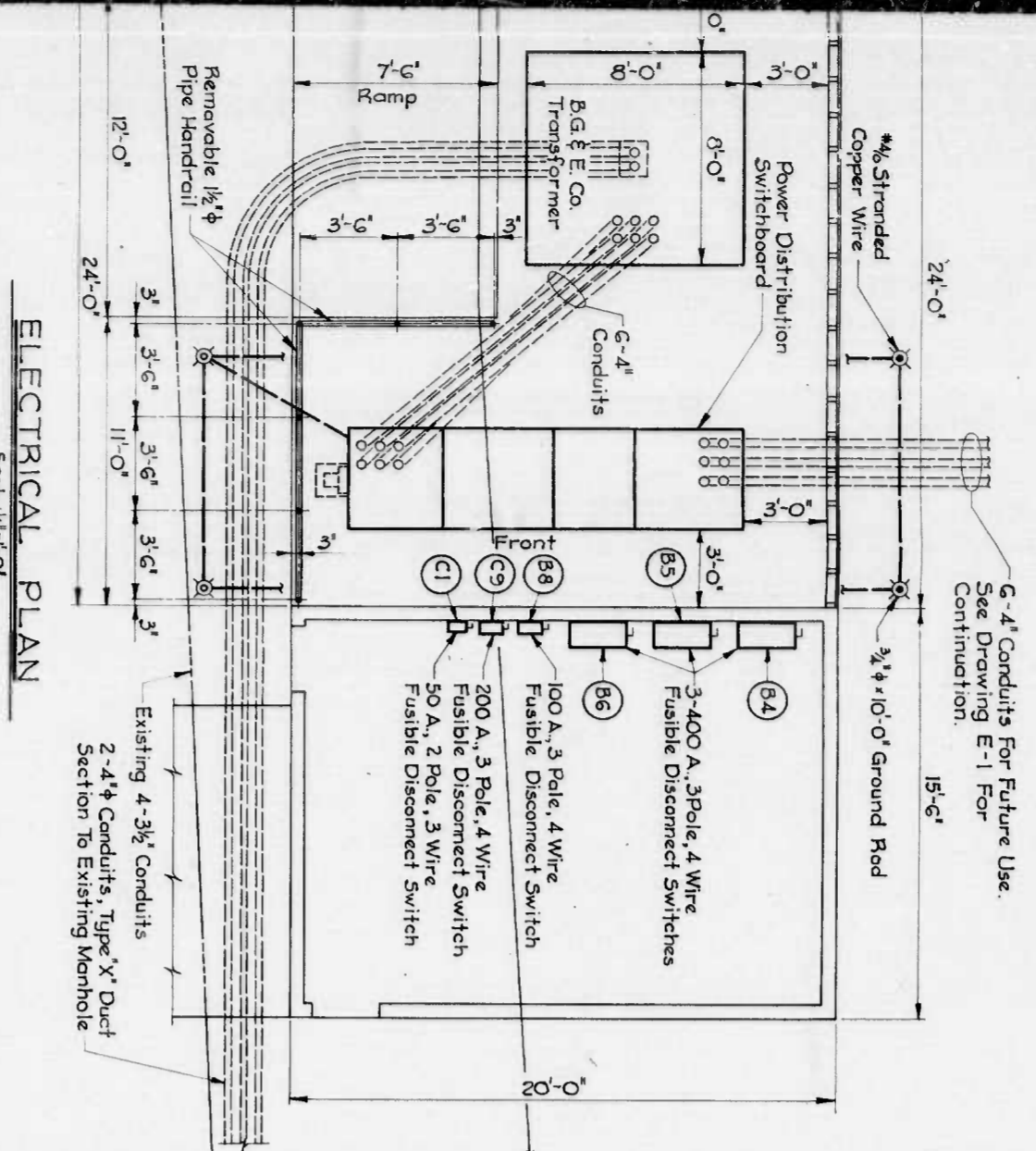
CIRC NO	EQUIPMENT SERVED	PHASE AND VOLTS	CIRCUIT BREAKER POLES	TRIP FRAME	WIRING SIZE	COND	REMARKS
A1	Main Circuit Breaker	3 $\phi$ , 208 V	3	800A	800A		
B1	Metering Equip Comp.	1 $\phi$ , 208 V	2	800A	1000A		
B2	Spare	1 $\phi$ , 208 V	2	800A	1000A		
B3	Spare	1 $\phi$ , 208 V	2	800A	1000A		
B4	Stage Lights	3 $\phi$ , 208 V	3	400A	400A	4-#500 MCM & 1-#6 Gnd	
B5	Stage Lights	3 $\phi$ , 208 V	3	400A	400A	4-#500 MCM & 1-#6 Gnd	
B6	Stage Lights	3 $\phi$ , 208 V	3	400A	400A	4-#500 MCM & 1-#6 Gnd	
B7	Spare	3 $\phi$ , 208 V	3	800A	400A		
B8	Sound System	3 $\phi$ , 208 V	3	100A	225A	4-#1/2 & 1-#6 Gnd	
C1	TV System	3 $\phi$ , 208 V	3	100A	225A	4-#1/2 & 1-#6 Gnd	
C2	Spare	3 $\phi$ , 208 V	3	100A	225A		
C3	Spare	3 $\phi$ , 208 V	3	100A	225A		
C4	Spare	3 $\phi$ , 208 V	3	100A	225A		
C5	LP 2" - Main Breaker	3 $\phi$ , 208 V	3	400A	400A	4-#500 MCM & 1-#6 Gnd	
C6	Spare	3 $\phi$ , 208 V	3	400A	400A		
C7	Spare	3 $\phi$ , 208 V	3	400A	400A		
C8	LP 1" - Main Breaker	3 $\phi$ , 208 V	3	400A	400A	4-#500 MCM & 1-#6 Gnd	
C9	TV System	3 $\phi$ , 208 V	3	200A	400A	4-#1/2 & 1-#6 Gnd	
D1	Lighting Panel Tip	3 $\phi$ , 208 V	2	400A	400A	400 Amp Mains	
D2	Spare	1 $\phi$ , 208 V	2	200A	400A	4-#1/2 & 1-#6 Gnd	
D3	Spare	1 $\phi$ , 208 V	2	200A	400A		
D4	Spare	1 $\phi$ , 208 V	2	200A	400A		
D5	Spare	1 $\phi$ , 208 V	2	800A	1000A		



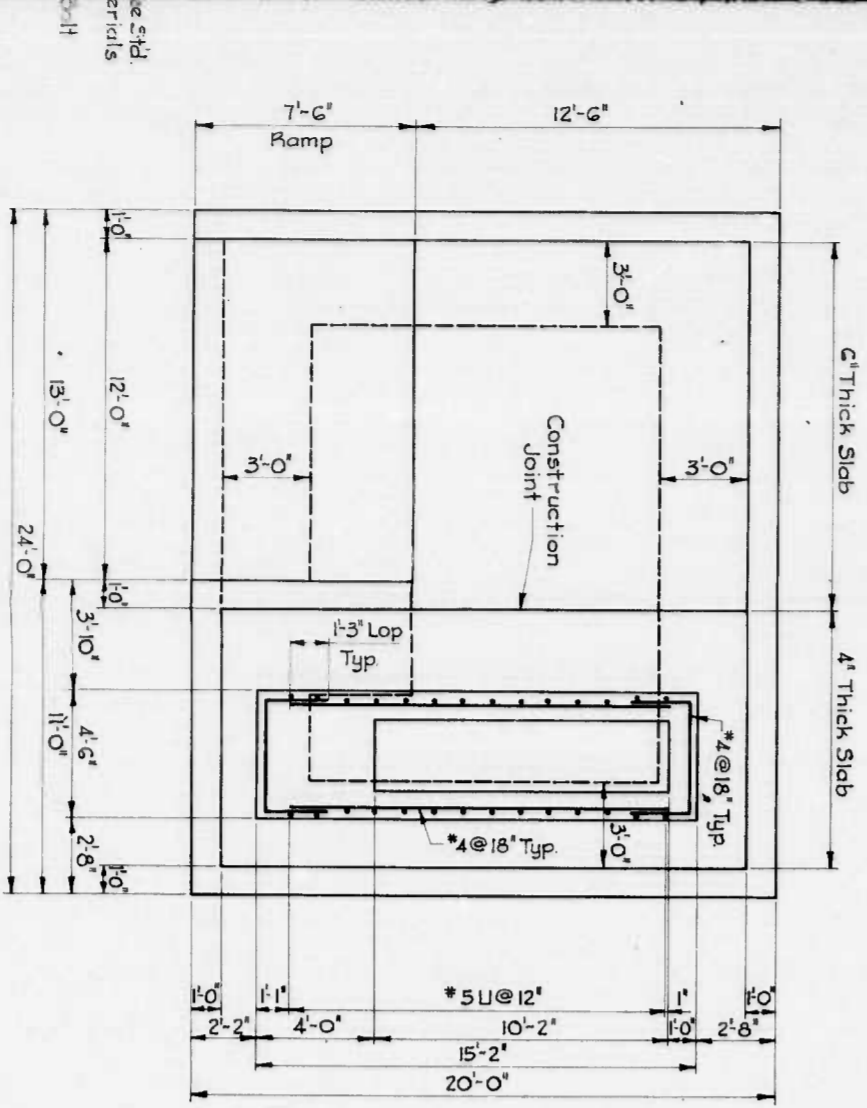
15 A



ONE LINE DIAGRAM - POWER DISTRIBUTION



ELECTRICAL PLAN



STRUCTURAL PLAN

**SCHEDULE OF PANEL 'LP1'**  
208/120 VOLTS, 3 PHASE, 4 WIRE, 225 A BUS CAPACITY, MAIN LUGS ONLY

CIRC NO	EQUIPMENT SERVED	CONNECTED LOAD KW	PHASE AND VOLTS	CIRCUIT BREAKERS		WIRING		REMARKS
				NO OF POLES	TRIP SIZE	NO	SIZE CONDUIT	
1,2,3	6-250 W. HDS. Lights On 25 Pole	0.32 Ea.	3-208	2	15A	2	12 RB	DB
4	3-250 W. HDS. Lights On 25 Pole	0.96	3-208	2	15A	2	12 RB	DB
5,6	2-8 W. Flu. Low Level Terrace Lights	0.26 Ea.	3-120	1	15A	2	12 RB	DB
7,8	6-10W. Incand. Enhance Lights	0.64 Ea.	3-120	1	15A	2	12 RB	DB
9	Billboard & Planter Lighting	1.80	3-120	1	20A	2	12 RB	DB
10	Restroom & Box Office Lights	1.25	3-120	1	20A	2	12 RB	DB
11	Restroom Lights	0.70	3-120	1	20A	2	12 RB	DB
12	Transformer & Power Room	0.75	3-120	1	20A	2	12 RB	DB
13,14	Service Yard Flood Lighting	100 Ea.	3-120	1	20A	2	12 RB	DB
15	Spares	100 Ea.	3-120	1	20A	2	12 RB	DB
16	Service Yard Flood Lighting	100 Ea.	3-120	1	20A	2	12 RB	DB
20,23,24	Spares	240	3-208	2	20A	2	12 RB	DB
21,25	Security Lights	0.60	3-208	2	20A	2	12 RB	DB
22	Loading Dock	2.50	3-208	2	20A	2	12 RB	DB
26	Water Heater - Future	1.45	3-208	2	20A	2	12 RB	DB
27	Ventilation Fan	1.45	3-208	2	20A	2	12 RB	DB
28,29,30	Spares	1.80	3-120	1	20A	2	12 RB	DB

**SCHEDULE OF PANEL AD**  
208/120 VOLTS, 3 PHASE, 4 WIRE, 100 A BUS CAPACITY, MAIN LUGS ONLY

CIRC NO	EQUIPMENT SERVED	CONNECTED LOAD KW	PHASE AND VOLTS	CIRCUIT BREAKERS		WIRING		REMARKS
				NO OF POLES	TRIP SIZE	NO	SIZE CONDUIT	
1	Receptacle - Stage Left	1.80	3-120	1	20A	2	12 RB	DB
2	Receptacle - Stage Right	1.80	3-120	1	20A	2	12 RB	DB
3	Receptacle - Mast A1	1.80	3-120	1	20A	2	12 RB	DB
4	Receptacle - Mast A	1.80	3-120	1	20A	2	12 RB	DB
5	Receptacle - Terrace 2	1.80	3-120	1	20A	2	12 RB	DB
6	Receptacle - Terrace 2	1.80	3-120	1	20A	2	12 RB	DB
7	Receptacle - Terrace 6	1.80	3-120	1	20A	2	12 RB	DB
8	Sub Feeder	1.80	3-120	1	20A	2	12 RB	DB
9	Spares	1.80	3-120	1	20A	2	12 RB	DB

**SCHEDULE OF PANEL 'LP2'**  
208/120 VOLTS, 3 PHASE, 4 WIRE, 400 A BUS CAPACITY, MAIN LUGS ONLY

CIRC NO	EQUIPMENT SERVED	CONNECTED LOAD KW	PHASE AND VOLTS	CIRCUIT BREAKERS		WIRING		REMARKS
				NO OF POLES	TRIP SIZE	NO	SIZE CONDUIT	
1	Emergency Battery Pack	0.24	3-120	1	20A	2	12 RB	DB
2	Spares	0.24	3-120	1	20A	2	12 RB	DB
3,4,5	Forced Air - Wall Heaters	1.5 Ea.	3-120	1	20A	2	12 RB	DB
6	Electric Griddle	2.00	3-208	2	30A	2	12 RB	DB
7	Heat Lamps	1.00	3-120	1	30A	2	12 RB	DB
8	Refrigerated Beer Truck	3.00	3-208	3	30A	2	12 RB	DB
9,10	Electric Fryer	3.00	3-208	2	30A	2	12 RB	DB
11	Electric Griddle	2.00	3-208	2	30A	2	12 RB	DB
12	Heat Lamps	1.00	3-120	1	30A	2	12 RB	DB
13	Refrigerated Beer Truck	3.00	3-208	3	30A	2	12 RB	DB
14,15	Electric Fryer	3.00	3-208	2	30A	2	12 RB	DB
16	Spares	1.80	3-120	1	20A	2	12 RB	DB

15 B

**MUSIC TENT**  
PIER 6  
INNER HARBOR EAST  
BALTIMORE, MD.  
FOR THE  
BALTIMORE OFFICE OF  
PROMOTION & TOURISM  
AND THE  
BALTIMORE SYMPHONY ORCHESTRA

**ELECTRICAL DETAILS  
LIGHTING AND POWER**

SCALE AS SHOWN

DATE MARCH 30, 1981

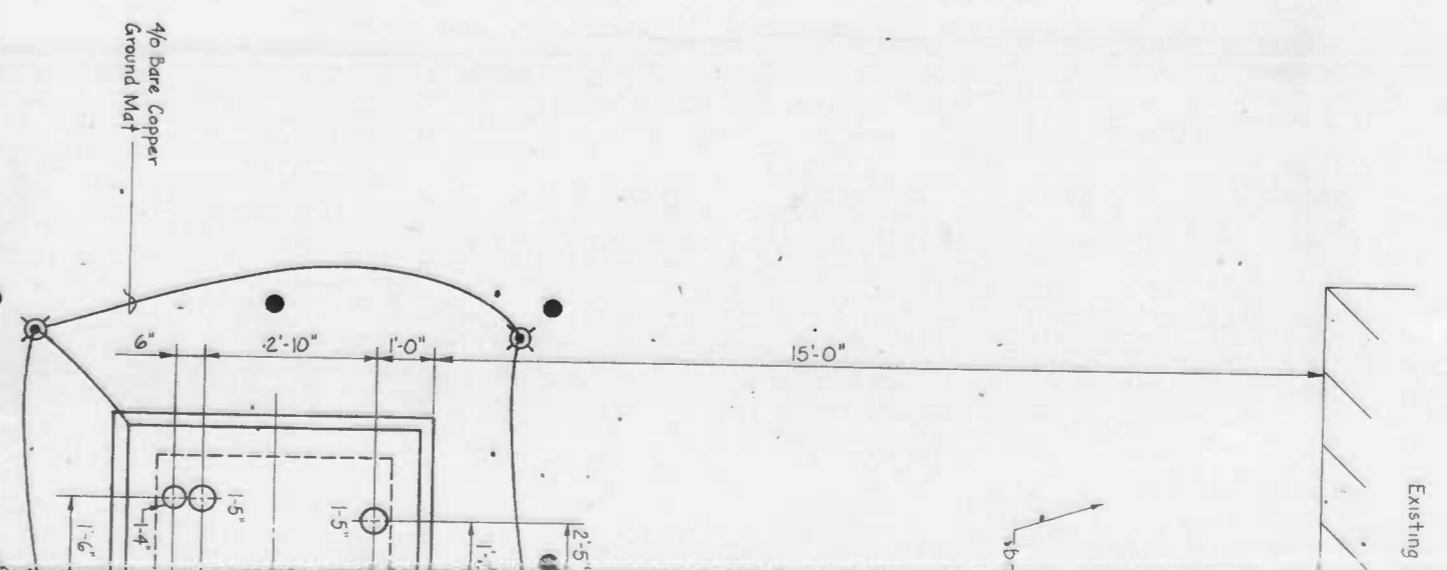
DRWG. NO. [ ] SHEET OF [ ]

RUMMEL, KLEPPER & KAHL  
CONSULTING ENGINEERS  
BALTIMORE, MD.

15076

16 A

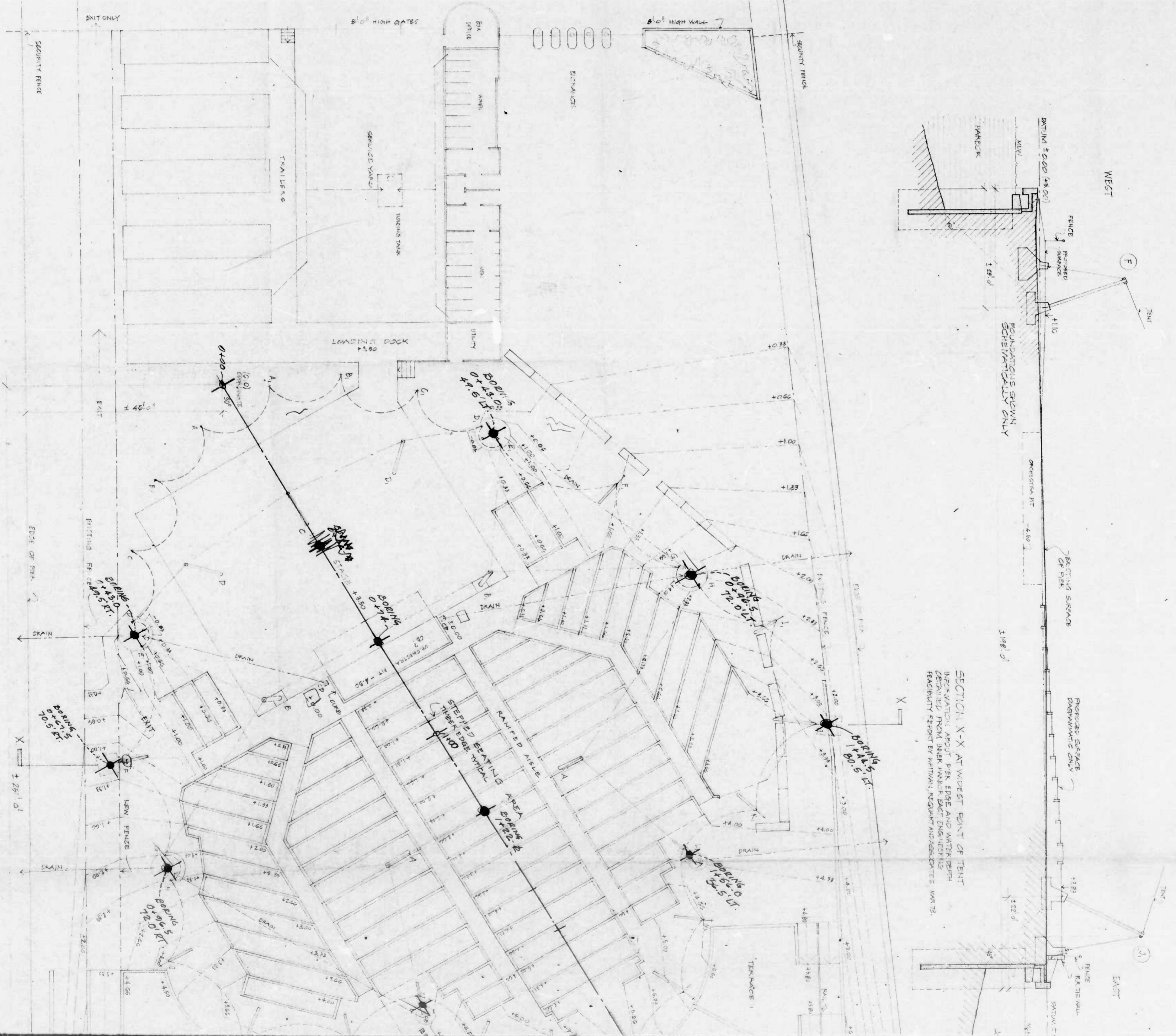
ELECTRICAL LEGEND	
SYMBOLS	DESCRIPTION
—	Conduit - On Ceiling Or Walls 2 - 1/2" & 1 - 1/2" Rqd. 3/4" C. Unless Otherwise Indicated
---	Underground Duct, Bank Size & Quantity As Noted
⚡	Heaters To Panel - Number Of Arrows Indicate Number Of Circuits & Major Or Crosslines Indicate Number Of Conductors
---	Audio Conduit - Exposed Or Underground Minimum Size Unless Otherwise Noted
—	Wiring In Conduit Turned Up
—	Wiring In Conduit Turned Down
⚡	Incandescent, High Pressure Sodium
⚡	Fluorescent Fixture
□	1000 Watt Flood Light Provided By <del>Others</del>
○	2000 Watt Flood Light Provided By <del>Others</del>
⚡	Weatherproof Duplex Receptacle Outlet - M.H. = As Indicated (15 or 20 A.)
⚡	Telephone Outlet - M.H. = 1'-0"
S	Single Pole Switch - M.H. = 4'-0"
SK	Key Operated Switch - M.H. = 4'-0"
□	Disconnect Switch, Fused - M.H. = 5'-0" To Top
E	Electric Manhole
T	Telephone Manhole
⚡	Speakers Provided By The Audio Engineer
⚡	Pull Box Or Junction Box
⚡	Frosted Rod & Exothermically Welded Connection



DETAIL  
PROPOSED  
AND CC



M I A



SECTION X-X AT WIDEST POINT OF TENT  
 INTERVALLS ABOUT PER EYES AND WATER PERH  
 DEFINED FROM INER WALLS AND PERH  
 FEASIBILITY REPORT BY WITMAN, REQUANT AND ASSOCIATES, MAR 75.

FOUNDATIONS SHOWN  
 SCHEMATICALLY ONLY

WEST

EAST

F

1

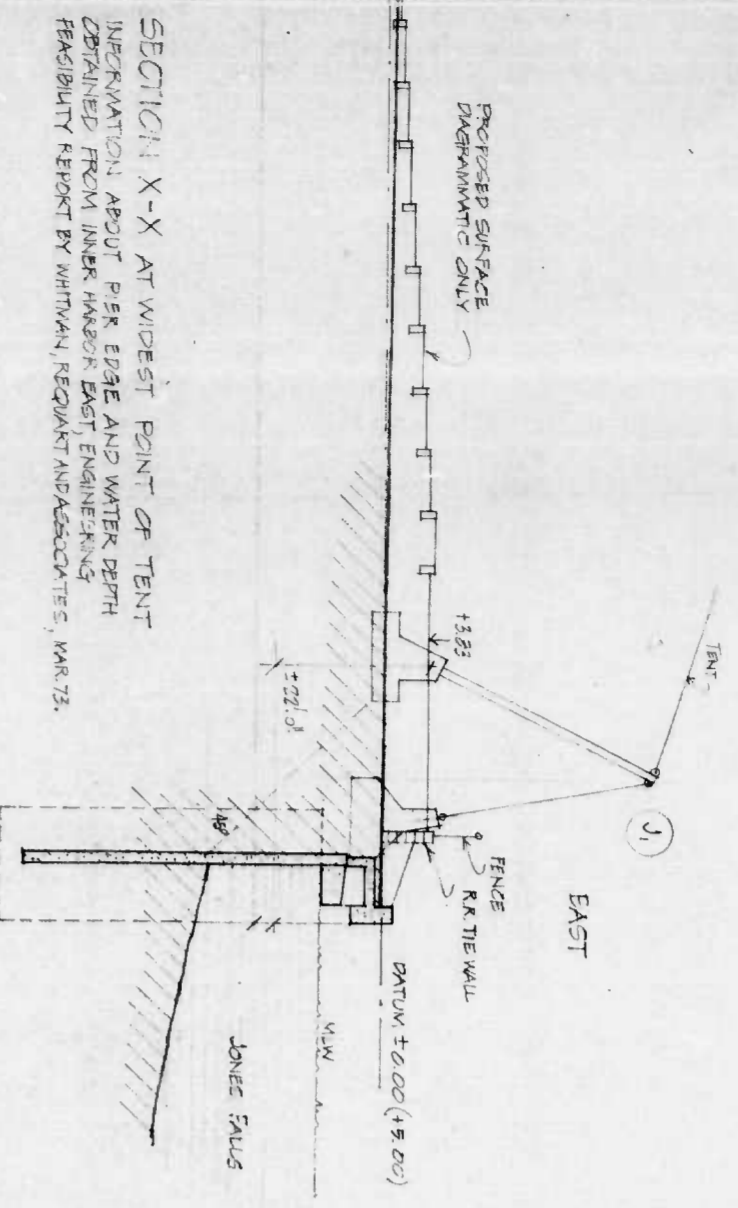
X

X

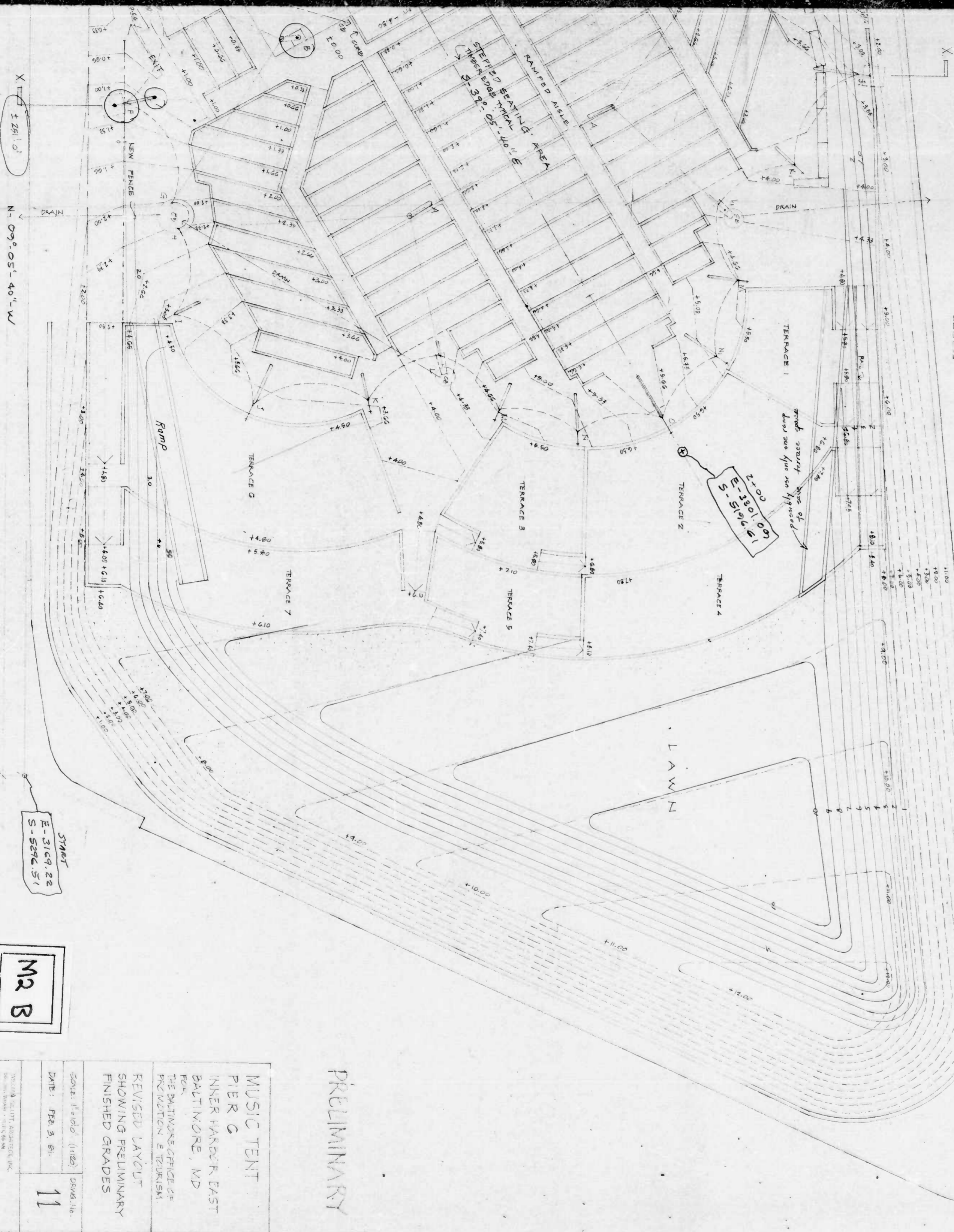








SECTION X-X AT WIDEST POINT OF TENT  
 INFORMATION ABOUT PER EASE AND WATER DEPTH  
 OBTAINED FROM INNER HARBOR EAST ENGINEERS  
 FACILITY REPORT BY WHITMAN, REQUANT AND ASSOCIATES, WASHINGTON, D.C.



**PRELIMINARY**

**MUSIC TENT  
 PIER C  
 INNER HARBOR EAST  
 BALTIMORE, MD**

THE BALTIMORE OFFICE OF  
 PROMOTION & TOURISM

REVISED LAYOUT  
 SHOWING PRELIMINARY  
 FINISHED GRADES

SCALE: 1/8" = 1'-0" (1/16" = 1'-0") DRAWING  
 DATE: FEB. 3, 81. 11

WILLIAM WELLS ARCHITECT, INC.  
 1000 BALTIMORE AVENUE, SUITE 600  
 BALTIMORE, MD 21201

**M2 B**

**M2**