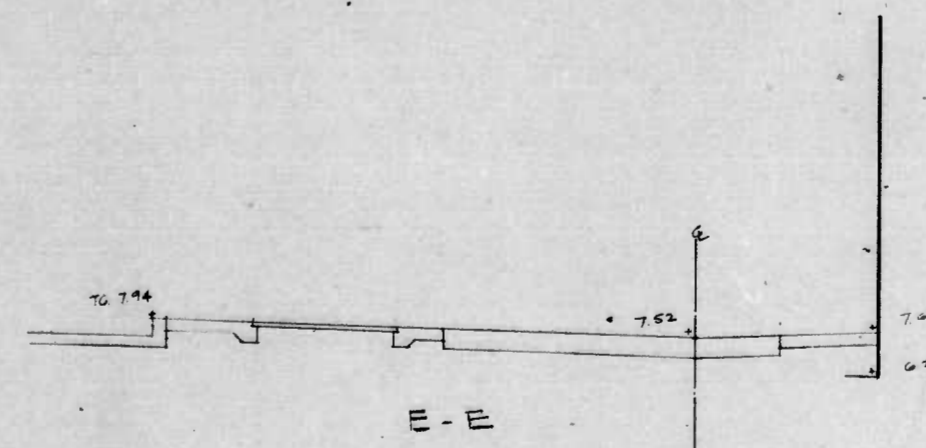
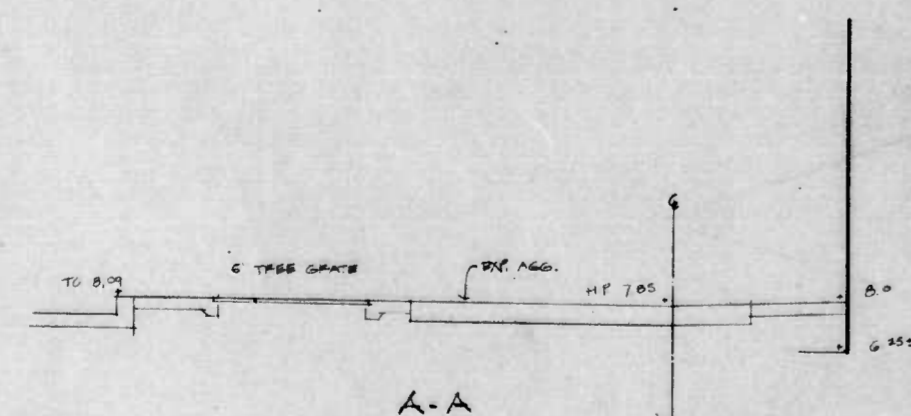
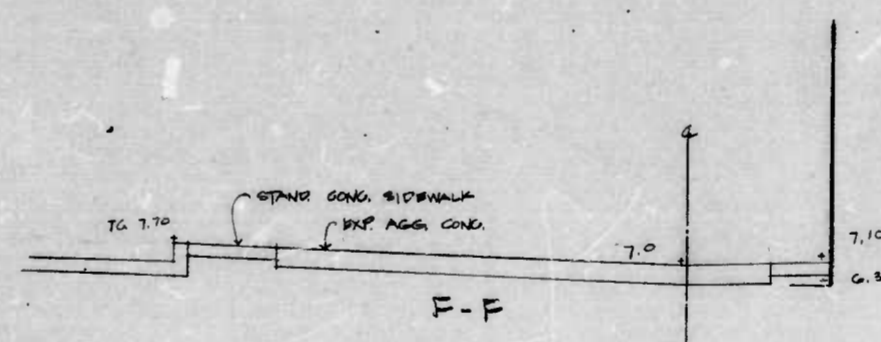
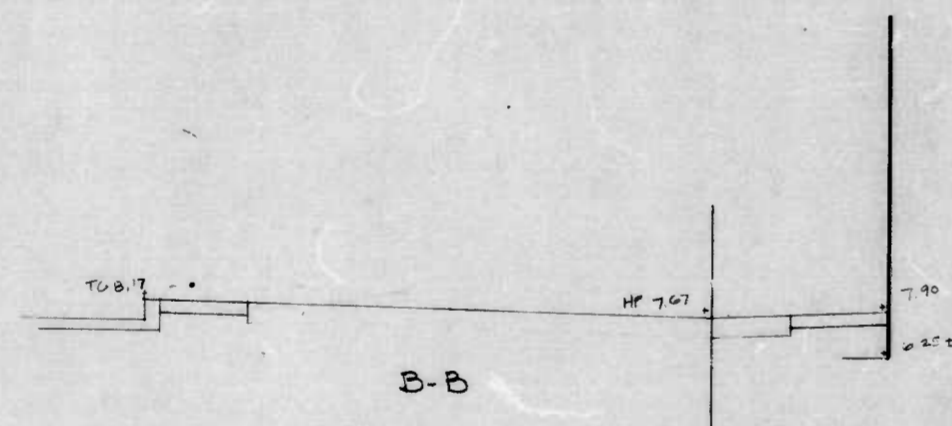
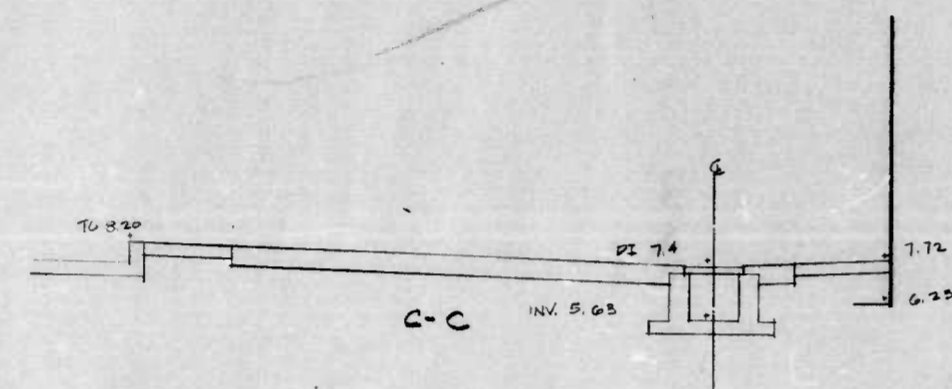
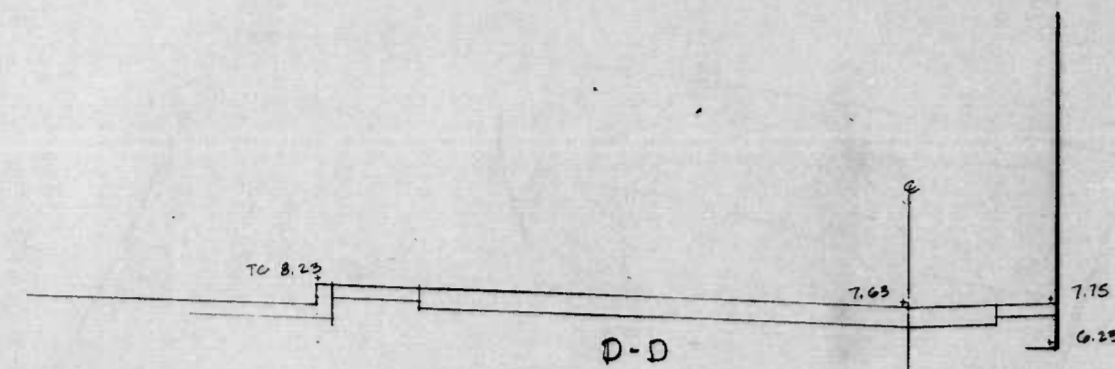




Land Design / Research, Inc.

Planning, Urban Design,
Landscape Architecture &
Architecture

5560 Sterrett Place, Suite 300
Columbia, Maryland 21044-2660
301/730-9191



DO NOT USE
FOR
CONSTRUCTION

Sheet Title
POWER STA / SIX FLAGS
FRATT ST. ENTRANCE
CROSS SECTIONS

Scale 1/4" = 1'0"

Revisions

No.	Description	Date

Project Number
12031.00

Date
4-17-05

Sheet Number
2 OF 2



M2

FILE REF 114-A-4

SITE "C"
COURSES AND DISTANCES

R827-R830	N87° 22' 45" E	132.38'
R830-R832	S04° 17' 28" E	137.75'
R832-R833	S03° 55' 10" E	131.32'
R833-R834	S86° 04' 15" W	132.00'
R834-R829	N03° 55' 10" W	169.85'
R829-R827	N04° 25' 10" W	142.75'

BASILINE COORDINATES

STA.	EAST	SOUTH
1+50.0	2498.110	4023.890
6+00.0	2530.676	4472.110

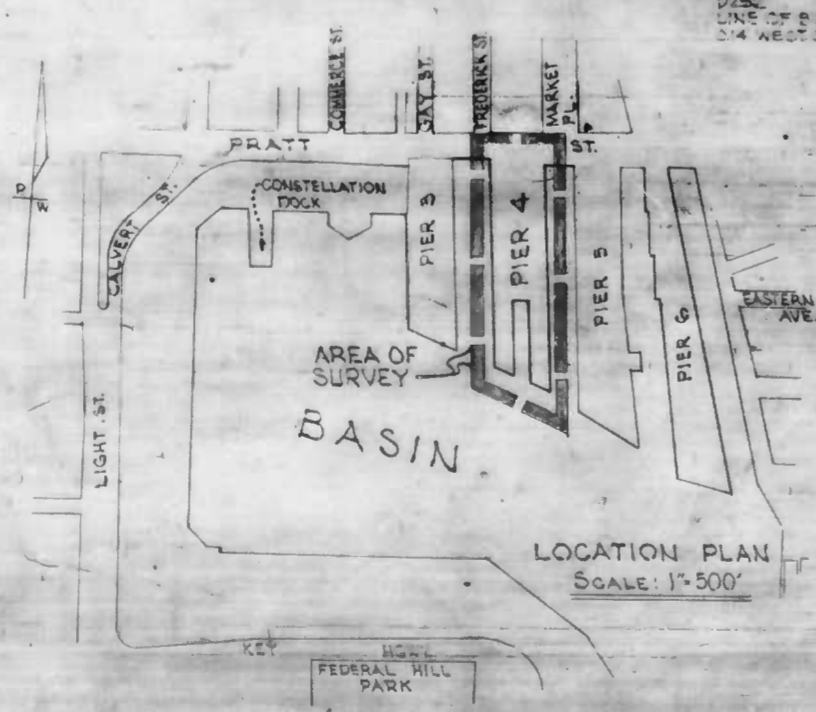
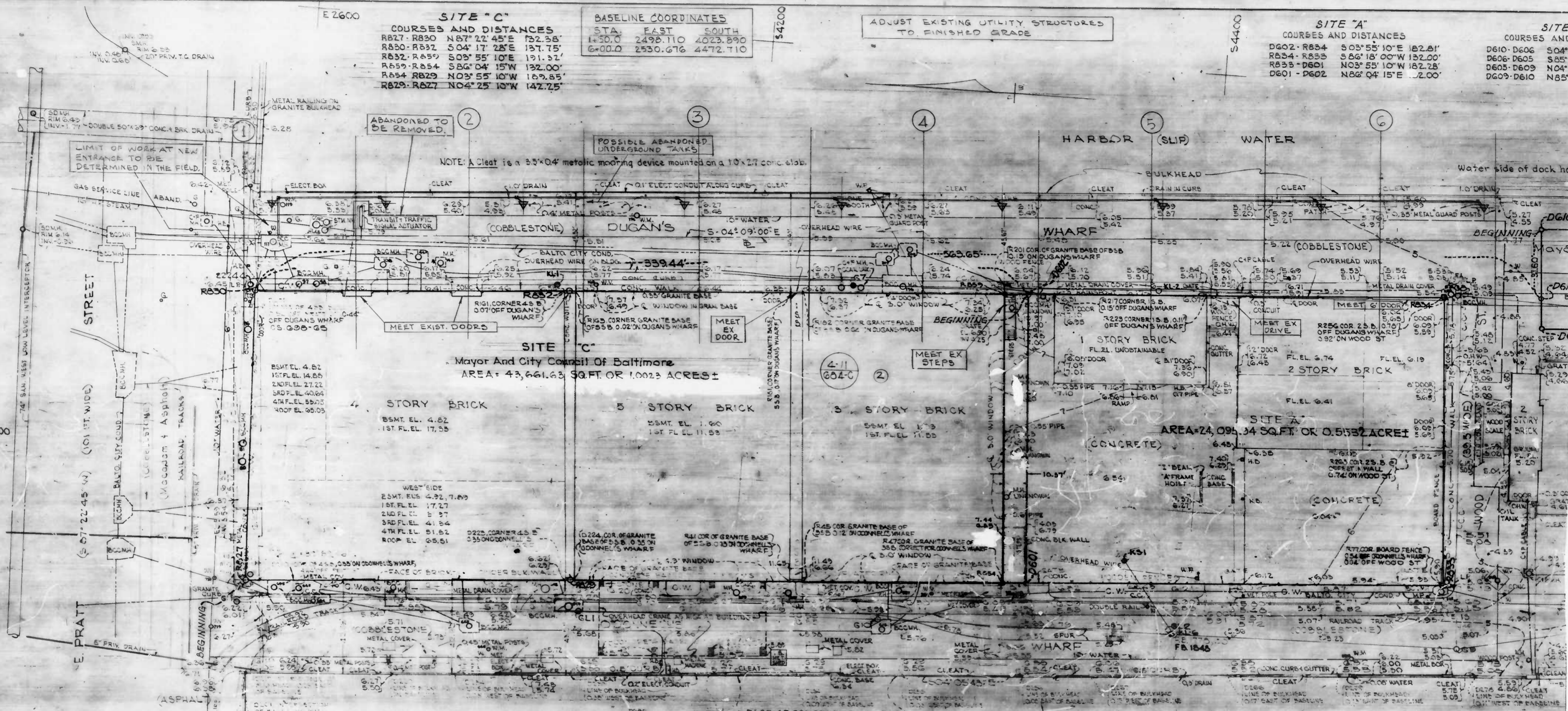
ADJUST EXISTING UTILITY STRUCTURES TO FINISHED GRADE

SITE "A"
COURSES AND DISTANCES

D602-R834	S03° 55' 10" E	182.81'
R834-R835	S86° 18' 00" W	152.00'
R835-D601	N03° 55' 10" W	182.78'
D601-D602	N86° 04' 15" E	12.00'

SITE
COURSES AND DISTANCES

D610-D606	S04° 00' 00" E	152.00'
D606-D605	S85° 00' 00" E	152.00'
D605-D609	N04° 00' 00" E	152.00'
D609-D610	N85° 00' 00" E	152.00'



- LEGEND**
- BCCM Baltimore City Conduit
 - FA Fire Alarm
 - FH Fire Hydrant
 - GB Gas Box or Valve
 - HB Hand Box
 - MP Metal Pole
 - OW Overhead Wire
 - SMA Sanitary Sewer Manhole
 - SDM Storm Drain Manhole
 - SM Steam Manhole
 - SL Street Light - Light Pole (Metal)
 - TS Traffic Signal or Pole
 - CP Telephone Conduit Manhole
 - WM Water Meter Valve
 - WP Wooden Pole, with Light
 - CC Concrete Curb, Walk
 - GC Granite Curb

FIELD BOOKS
L-1175
FB-177B
FB-1848

DRAWING REFERENCES
CONDUIT AND LIGHT BASES, SHT. 2 OF 4.
PROFILES, SHT. 3 OF 4.
CROSS-SECTIONS, SHT. 4 OF 4.

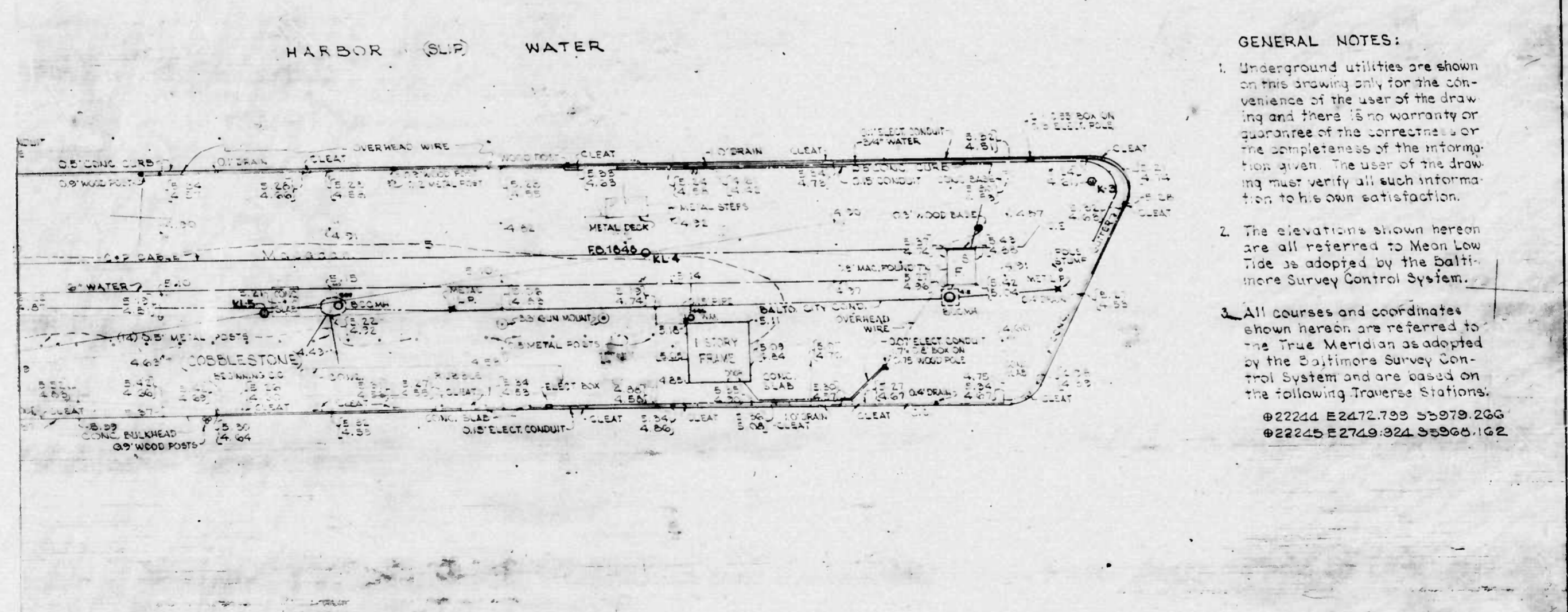
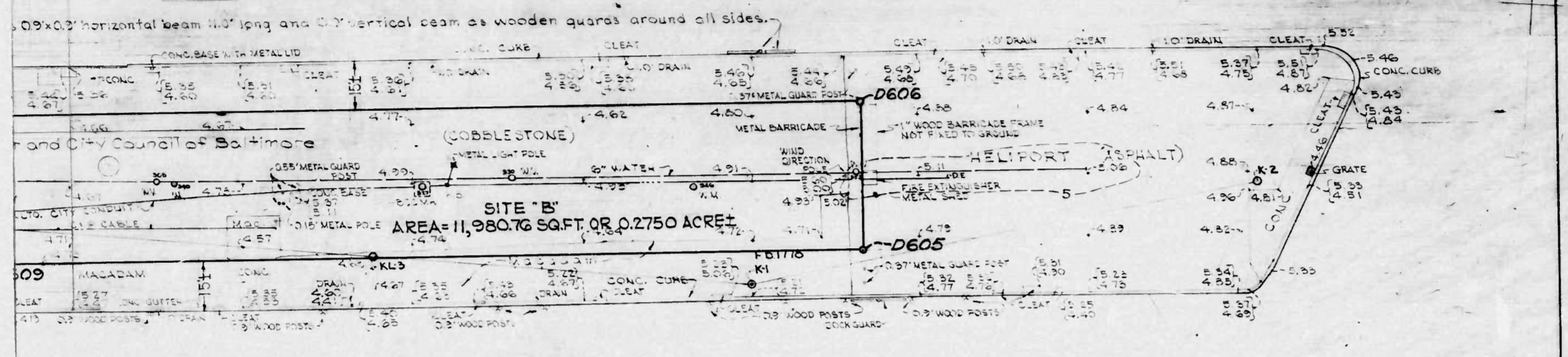
CITY OF BALTIMORE
DEPARTMENT OF PUBLIC WORKS
BUREAU OF HIGHWAYS
PLAN
PIER 4 - EAST DRIVE
PRATT STREET TO WOOD STREET
MAINT. DIV.

SCALE: 1"=20'
HIGHWAY ENGR. DIV.
DATE: 11/19/85
SHEET 1 OF 4

4-A-111

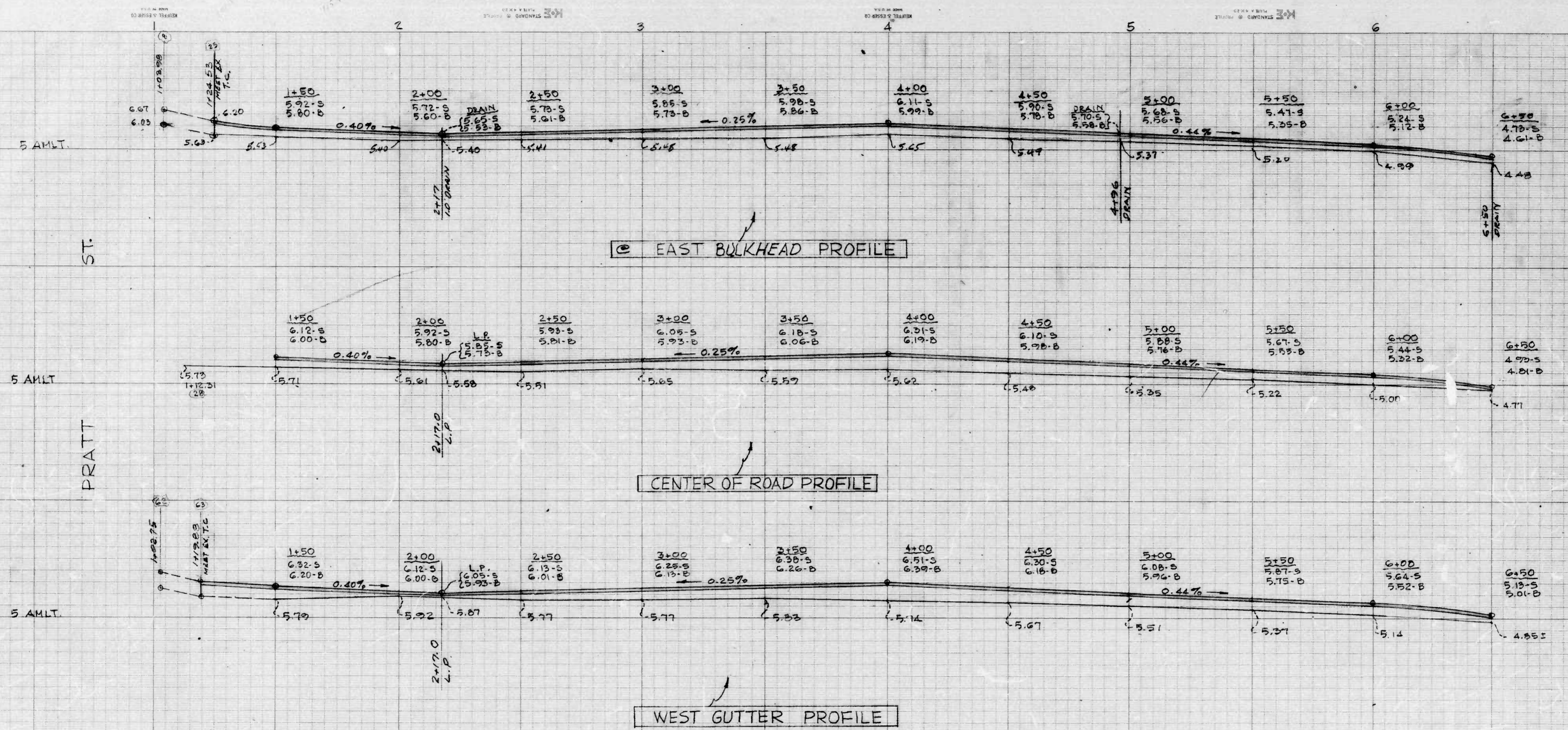
W.D. No. 7335
SURVEY BY DANIEL P. BROWN
COMPUTED BY L. DODD
DRAWN BY BRANDED PRATT
EXAMINED COMP.

DISTANCES		COORDINATES		REVISIONS			
9 00' S	262.14'	R833	E 2374.52	S 4511.22	R.627	E 2337.41	S 3987.79
1 00' W	45.53'	R834	E 2506.24	S 4502.71	R.629	E 2348.37	S 4127.62
9 00' W	262.14'	D605	E 2514.22	S 4807.47	R.630	E 2400.69	S 3981.74
1 00' S	45.53'	D606	E 2559.65	S 4804.18	R.631	E 2479.96	S 4119.10
		D609	E 2495.18	S 4545.02	R.634	E 2361.35	S 4319.03
		D610	E 2540.59	S 4541.73	R.639	E 2493.04	S 4309.96
		D601	E 2392.06	S 4329.37			
		D602	E 2493.75	S 4320.33			
		D611	E 2509.08	S 4544.02			



- GENERAL NOTES:**
- Underground utilities are shown on this drawing only for the convenience of the user of the drawing and there is no warranty or guarantee of the correctness or the completeness of the information given. The user of the drawing must verify all such information to his own satisfaction.
 - The elevations shown hereon are all referred to Mean Low Tide as adopted by the Baltimore Survey Control System.
 - All courses and coordinates shown hereon are referred to the True Meridian as adopted by the Baltimore Survey Control System and are based on the following Traverse Stations:
 @22244 E 2472.739 S 3979.266
 @22245 E 2749.324 S 3968.162

REFERENCES:
 FIELD BOOKS: 1778, 1855; 2625, 2627, 2628, 2629, 2630, 2631, 2632, 2633, 2634, 2635, 2636, 2637, 2638, 2639, 2640, 2641, 2642, 2643, 2644, 2645, 2646, 2647, 2648, 2649, 2650, 2651, 2652, 2653, 2654, 2655, 2656, 2657, 2658, 2659, 2660, 2661, 2662, 2663, 2664, 2665, 2666, 2667, 2668, 2669, 2670, 2671, 2672, 2673, 2674, 2675, 2676, 2677, 2678, 2679, 2680, 2681, 2682, 2683, 2684, 2685, 2686, 2687, 2688, 2689, 2690, 2691, 2692, 2693, 2694, 2695, 2696, 2697, 2698, 2699, 2700, 2701, 2702, 2703, 2704, 2705, 2706, 2707, 2708, 2709, 2710, 2711, 2712, 2713, 2714, 2715, 2716, 2717, 2718, 2719, 2720, 2721, 2722, 2723, 2724, 2725, 2726, 2727, 2728, 2729, 2730, 2731, 2732, 2733, 2734, 2735, 2736, 2737, 2738, 2739, 2740, 2741, 2742, 2743, 2744, 2745, 2746, 2747, 2748, 2749, 2750, 2751, 2752, 2753, 2754, 2755, 2756, 2757, 2758, 2759, 2760, 2761, 2762, 2763, 2764, 2765, 2766, 2767, 2768, 2769, 2770, 2771, 2772, 2773, 2774, 2775, 2776, 2777, 2778, 2779, 2780, 2781, 2782, 2783, 2784, 2785, 2786, 2787, 2788, 2789, 2790, 2791, 2792, 2793, 2794, 2795, 2796, 2797, 2798, 2799, 2800, 2801, 2802, 2803, 2804, 2805, 2806, 2807, 2808, 2809, 2810, 2811, 2812, 2813, 2814, 2815, 2816, 2817, 2818, 2819, 2820, 2821, 2822, 2823, 2824, 2825, 2826, 2827, 2828, 2829, 2830, 2831, 2832, 2833, 2834, 2835, 2836, 2837, 2838, 2839, 2840, 2841, 2842, 2843, 2844, 2845, 2846, 2847, 2848, 2849, 2850, 2851, 2852, 2853, 2854, 2855, 2856, 2857, 2858, 2859, 2860, 2861, 2862, 2863, 2864, 2865, 2866, 2867, 2868, 2869, 2870, 2871, 2872, 2873, 2874, 2875, 2876, 2877, 2878, 2879, 2880, 2881, 2882, 2883, 2884, 2885, 2886, 2887, 2888, 2889, 2890, 2891, 2892, 2893, 2894, 2895, 2896, 2897, 2898, 2899, 2900, 2901, 2902, 2903, 2904, 2905, 2906, 2907, 2908, 2909, 2910, 2911, 2912, 2913, 2914, 2915, 2916, 2917, 2918, 2919, 2920, 2921, 2922, 2923, 2924, 2925, 2926, 2927, 2928, 2929, 2930, 2931, 2932, 2933, 2934, 2935, 2936, 2937, 2938, 2939, 2940, 2941, 2942, 2943, 2944, 2945, 2946, 2947, 2948, 2949, 2950, 2951, 2952, 2953, 2954, 2955, 2956, 2957, 2958, 2959, 2960, 2961, 2962, 2963, 2964, 2965, 2966, 2967, 2968, 2969, 2970, 2971, 2972, 2973, 2974, 2975, 2976, 2977, 2978, 2979, 2980, 2981, 2982, 2983, 2984, 2985, 2986, 2987, 2988, 2989, 2990, 2991, 2992, 2993, 2994, 2995, 2996, 2997, 2998, 2999, 3000, 3001, 3002, 3003, 3004, 3005, 3006, 3007, 3008, 3009, 3010, 3011, 3012, 3013, 3014, 3015, 3016, 3017, 3018, 3019, 3020, 3021, 3022, 3023, 3024, 3025, 3026, 3027, 3028, 3029, 3030, 3031, 3032, 3033, 3034, 3035, 3036, 3037, 3038, 3039, 3040, 3041, 3042, 3043, 3044, 3045, 3046, 3047, 3048, 3049, 3050, 3051, 3052, 3053, 3054, 3055, 3056, 3057, 3058, 3059, 3060, 3061, 3062, 3063, 3064, 3065, 3066, 3067, 3068, 3069, 3070, 3071, 3072, 3073, 3074, 3075, 3076, 3077, 3078, 3079, 3080, 3081, 3082, 3083, 3084, 3085, 3086, 3087, 3088, 3089, 3090, 3091, 3092, 3093, 3094, 3095, 3096, 3097, 3098, 3099, 3100, 3101, 3102, 3103, 3104, 3105, 3106, 3107, 3108, 3109, 3110, 3111, 3112, 3113, 3114, 3115, 3116, 3117, 3118, 3119, 3120, 3121, 3122, 3123, 3124, 3125, 3126, 3127, 3128, 3129, 3130, 3131, 3132, 3133, 3134, 3135, 3136, 3137, 3138, 3139, 3140, 3141, 3142, 3143, 3144, 3145, 3146, 3147, 3148, 3149, 3150, 3151, 3152, 3153, 3154, 3155, 3156, 3157, 3158, 3159, 3160, 3161, 3162, 3163, 3164, 3165, 3166, 3167, 3168, 3169, 3170, 3171, 3172, 3173, 3174, 3175, 3176, 3177, 3178, 3179, 3180, 3181, 3182, 3183, 3184, 3185, 3186, 3187, 3188, 3189, 3190, 3191, 3192, 3193, 3194, 3195, 3196, 3197, 3198, 3199, 3200, 3201, 3202, 3203, 3204, 3205, 3206, 3207, 3208, 3209, 3210, 3211, 3212, 3213, 3214, 3215, 3216, 3217, 3218, 3219, 3220, 3221, 3222, 3223, 3224, 3225, 3226, 3227, 3228, 3229, 3230, 3231, 3232, 3233, 3234, 3235, 3236, 3237, 3238, 3239, 3240, 3241, 3242, 3243, 3244, 3245, 3246, 3247, 3248, 3249, 3250, 3251, 3252, 3253, 3254, 3255, 3256, 3257, 3258, 3259, 3260, 3261, 3262, 3263, 3264, 3265, 3266, 3267, 3268, 3269, 3270, 3271, 3272, 3273, 3274, 3275, 3276, 3277, 3278, 3279, 3280, 3281, 3282, 3283, 3284, 3285, 3286, 3287, 3288, 3289, 3290, 3291, 3292, 3293, 3294, 3295, 3296, 3297, 3298, 3299, 3300, 3301, 3302, 3303, 3304, 3305, 3306, 3307, 3308, 3309, 3310, 3311, 3312, 3313, 3314, 3315, 3316, 3317, 3318, 3319, 3320, 3321, 3322, 3323, 3324, 3325, 3326, 3327, 3328, 3329, 3330, 3331, 3332, 3333, 3334, 3335, 3336, 3337, 3338, 3339, 3340, 3341, 3342, 3343, 3344, 3345, 3346, 3347, 3348, 3349, 3350, 3351, 3352, 3353, 3354, 3355, 3356, 3357, 3358, 3359, 3360, 3361, 3362, 3363, 3364, 3365, 3366, 3367, 3368, 3369, 3370, 3371, 3372, 3373, 3374, 3375, 3376, 3377, 3378, 3379, 3380, 3381, 3382, 3383, 3384, 3385, 3386, 3387, 3388, 3389, 3390, 3391, 3392, 3393, 3394, 3395, 3396, 3397, 3398, 3399, 3400, 3401, 3402, 3403, 3404, 3405, 3406, 3407, 3408, 3409, 3410, 3411, 3412, 3413, 3414, 3415, 3416, 3417, 3418, 3419, 3420, 3421, 3422, 3423, 3424, 3425, 3426, 3427, 3428, 3429, 3430, 3431, 3432, 3433, 3434, 3435, 3436, 3437, 3438, 3439, 3440, 3441, 3442, 3443, 3444, 3445, 3446, 3447, 3448, 3449, 3450, 3451, 3452, 3453, 3454, 3455, 3456, 3457, 3458, 3459, 3460, 3461, 3462, 3463, 3464, 3465, 3466, 3467, 3468, 3469, 3470, 3471, 3472, 3473, 3474, 3475, 3476, 3477, 3478, 3479, 3480, 3481, 3482, 3483, 3484, 3485, 3486, 3487, 3488, 3489, 3490, 3491, 3492, 3493, 3494, 3495, 3496, 3497, 3498, 3499, 3500, 3501, 3502, 3503, 3504, 3505, 3506, 3507, 3508, 3509, 3510, 3511, 3512, 3513, 3514, 3515, 3516, 3517, 3518, 3519, 3520, 3521, 3522, 3523, 3524, 3525, 3526, 3527, 3528, 3529, 3530, 3531, 3532, 3533, 3534, 3535, 3536, 3537, 3538, 3539, 3540, 3541, 3542, 3543, 3544, 3545, 3546, 3547, 3548, 3549, 3550, 3551, 3552, 3553, 3554, 3555, 3556, 3557, 3558, 3559, 3560, 3561, 3562, 3563, 3564, 3565, 3566, 3567, 3568, 3569, 3570, 3571, 3572, 3573, 3574, 3575, 3576, 3577, 3578, 3579, 3580, 3581, 3582, 3583, 3584, 3585, 3586, 3587, 3588, 3589, 3590, 3591, 3592, 3593, 3594, 3595, 3596, 3597, 3598, 3599, 3600, 3601, 3602, 3603, 3604, 3605, 3606, 3607, 3608, 3609, 3610, 3611, 3612, 3613, 3614, 3615, 3616, 3617, 3618, 3619, 3620, 3621, 3622, 3623, 3624, 3625, 3626, 3627, 3628, 3629, 3630, 3631, 3632, 3633, 3634, 3635, 3636, 3637, 3638, 3639, 3640, 3641, 3642, 3643, 3644, 3645, 3646, 3647, 3648, 3649, 3650, 3651, 3652, 3653, 3654, 3655, 3656, 3657, 3658, 3659, 3660, 3661, 3662, 3663, 3664, 3665, 3666, 3667, 3668, 3669, 3670, 3671, 3672, 3673, 3674, 3675, 3676, 3677, 3678, 3679, 3680, 3681, 3682, 3683, 3684, 3685, 3686, 3687, 3688, 3689, 3690, 3691, 3692, 3693, 3694, 3695, 3696, 3697, 3698, 3699, 3700, 3701, 3702, 3703, 3704, 3705, 3706, 3707, 3708, 3709, 3710, 3711, 3712, 3713, 3714, 3715, 3716, 3717, 3718, 3719, 3720, 3721, 3722, 3723, 3724, 3725, 3726, 3727, 3728, 3729, 3730, 3731, 3732, 3733, 3734, 3735, 3736, 3737, 3738, 3739, 3740, 3741, 3742, 3743, 3744, 3745, 3746, 3747, 3748, 3749, 3750, 3751, 3752, 3753, 3754, 3755, 3756, 3757, 3758, 3759, 3760, 3761, 3762, 3763, 3764, 3765, 3766, 3767, 3768, 3769, 3770, 3771, 3772, 3773, 3774, 3775, 3776, 3777, 3778, 3779, 3780, 3781, 3782, 3783, 3784, 3785, 3786, 3787, 3788, 3789, 3790, 3791, 3792, 3793, 3794, 3795, 3796, 3797, 3798, 3799, 3800, 3801, 3802, 3803, 3804, 3805, 3806, 3807, 3808, 3809, 3810, 3811, 3812, 3813, 3814, 3815, 3816, 3817, 3818, 3819, 3820, 3821, 3822, 3823, 3824, 3825, 3826, 3827, 3828, 3829, 3830, 3831, 3832, 3833, 3834, 3835, 3836, 3837, 3838, 3839, 3840, 3841, 3842, 3843, 3844, 3845, 3846, 3847, 3848, 3849, 3850, 3851, 3852, 3853, 3854, 3855, 3856, 3857, 3858, 3859, 3860, 3861, 3862, 3863, 3864, 3865, 3866, 3867, 3868, 3869, 3870, 3871, 3872, 3873, 3874, 3875, 3876, 3877, 3878, 3879, 3880, 3881, 3882, 3883, 3884, 3885, 3886, 3887, 3888, 3889, 3890, 3891, 3892, 3893, 3894, 3895, 3896, 3897, 3898, 3899, 3900, 3901, 3902, 3903, 3904, 3905, 3906, 3907, 3908, 3909, 3910, 3911, 3912, 3913, 3914, 3915, 3916, 3917, 3918, 3919, 3920, 3921, 3922, 3923, 3924, 3925, 3926, 3927, 3928, 3929, 3930, 3931, 3932, 3933, 3934, 3935, 3936, 3937, 3938, 3939, 3940, 3941, 3942, 3943, 3944, 3945, 3946, 3947, 3948, 3949, 3950, 3951, 3952, 3953, 3954, 3955, 3956, 3957, 3958, 3959, 3960, 3961, 3962, 3963, 3964, 3965, 3966, 3967, 3968, 3969, 3970, 3971, 3972, 3973, 3974, 3975, 3976, 3977, 3978, 3979, 3980, 3981, 3982, 3983, 3984, 3985, 3986, 3987, 3988, 3989, 3990, 3991, 3992, 3993, 3994, 3995, 3996, 3997, 3998, 3999, 4000, 4001, 4002, 4003, 4004, 4005, 4006, 4007, 4008, 4009, 4010, 4011, 4012, 4013, 4014, 4015, 4016, 4017, 4018, 4019, 4020, 4021, 4022, 4023, 4024, 4025, 4026, 4027, 4028, 4029, 4030, 4031, 4032, 4033, 4034, 4035, 4036, 4037, 4038, 4039, 4040, 4041, 4042, 4043, 4044, 4045, 4046, 4047, 4048, 4049, 4050, 4051, 4052, 4053, 4054, 4055, 4056, 4057, 4058, 4059, 4060, 4061, 4062, 4063, 4064, 4065, 4066, 4067, 4068, 4069, 4070, 4071, 4072, 4073, 4074, 4075, 4076, 4077, 4078, 4079, 4080, 4081, 4082, 4083, 4084, 4085, 4086, 4087, 4088, 4089, 4090, 4091, 4092, 4093, 4094, 4095, 4096, 4097, 4098, 4099, 4100, 4101, 4102, 4103, 4104, 4105, 4106, 4107, 4108, 4109, 4110, 4111, 4112, 4113, 4114, 4115, 4116, 4117, 4118, 4119, 4120, 4121, 4122, 4123, 4124, 4125, 4126, 4127, 4128, 4129, 4130, 4131, 4132, 4133, 4134, 4135, 4136, 4137, 4138, 4139, 4140, 4141, 4142, 4143, 4144, 4145, 4146, 4147, 4148, 4149, 4150, 4151, 4152, 4153, 4154, 4155, 4156, 4157, 4158, 4159, 4160, 4161, 4162, 4163, 4164, 4165, 4166, 4167, 4168, 4169, 4170, 4171, 4172, 4173, 4174, 4175, 4176, 4177, 4178, 4179, 4180, 4181, 4182, 4183, 4184, 4185, 4186, 4187, 4188, 4189, 4190, 4191, 4192, 4193, 4194, 4195, 4196, 4197, 4198, 4199, 4200, 4201, 4202, 4203, 4204, 4205, 4206, 4207, 4208, 4209, 4210, 4211, 4212, 4213, 4214, 4215, 4216, 4217, 4218, 4219, 4220, 4221, 4222, 4223, 4224, 4225, 4226, 4227, 4228, 4229, 4230, 4231, 4232, 4233, 4234, 4235, 4236, 4237, 4238, 4239, 4240, 4241, 4242, 4243, 4244, 4245, 4246, 4247, 4248, 4249, 4250, 4251, 4252, 4253, 4254, 4255, 4256, 4257, 4258, 4259, 4260, 4261, 4262, 4263, 4264, 4265, 4266, 4267, 4268, 4269, 4270, 4271, 4272, 4273, 4274, 4275, 4276, 4277, 4278, 4279, 4280, 4281, 4282, 4283, 4284, 4285, 4286, 4287, 4288, 4289, 4290, 4291, 4292, 4293, 4294, 4295, 4296, 4297, 4298, 4299, 4300, 4301, 4302, 4303, 4304, 4305, 4306, 4307, 4308, 4309, 4310, 4311, 4312, 4313, 4314, 4315, 4316, 4317, 4318, 4319, 4320, 4321, 4322, 4323, 4324, 4325, 4326, 4327, 4328, 4329, 4330, 4331, 4332, 4333, 4334, 4335, 4336, 4337, 4338, 4339, 4340, 4341, 4342, 4343, 4344, 4345, 4346, 4347, 4348, 4349, 4350, 4351, 4352, 4353, 4354, 4355, 4356, 4357, 4358, 4359, 4360, 4361, 4362, 4363, 4364, 4365, 4366, 4367, 4368, 4369, 4370, 4371, 4372, 4373, 4374, 4375, 4376, 4377, 4378, 4379, 4380, 4381, 4382, 4383, 4384, 4385, 4386, 4387, 4388, 4389, 4390, 4391, 4392, 4393, 4394, 4395, 4396, 4397, 4398, 4399, 4400, 4401, 4402, 4403, 4404, 4405, 4406, 4407, 4408, 4409, 4410, 4411, 4412, 4413, 4414, 4415, 4416, 4417, 4418, 4419, 4420, 4421, 4422, 4423, 4424, 4425, 4426, 4427, 4428, 4429, 4430, 4431, 4432, 4433, 4434, 4435, 4436, 4437, 4438, 4439, 4440, 4441, 4442, 4443, 4444, 4445, 4446, 4447, 4448, 4449, 4450, 4451, 4452, 4453, 4454,

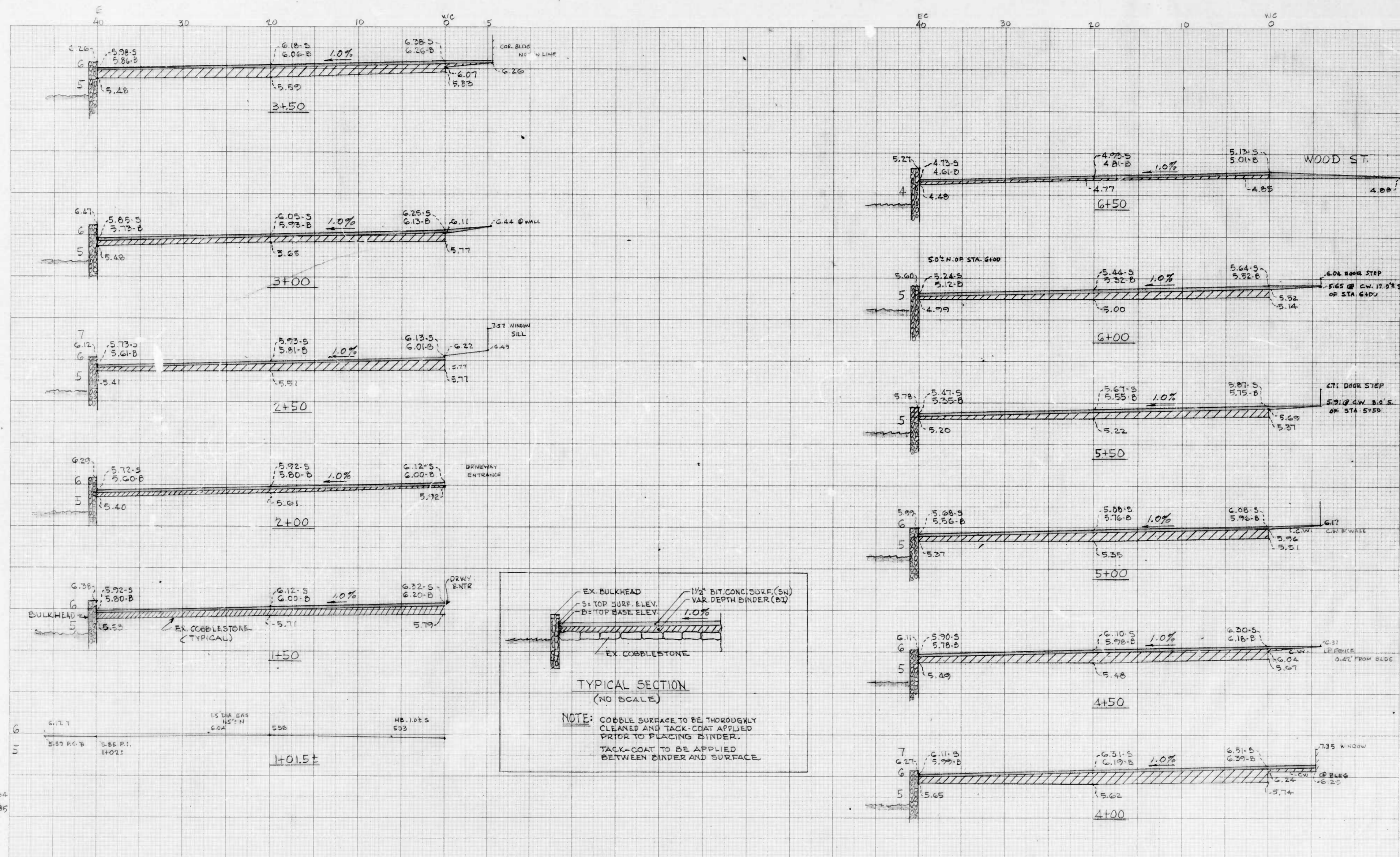


ST.
PRATT

PIER 4 SITE IMPROVEMENTS
 EAST SIDE FROM PRATT ST. TO WOOD ST
 HOR. 1"=20.0'
 SCALE VER. 1"=2.0'
 JHB
 DEC. 11/19/85

SHEET 3 OF 4

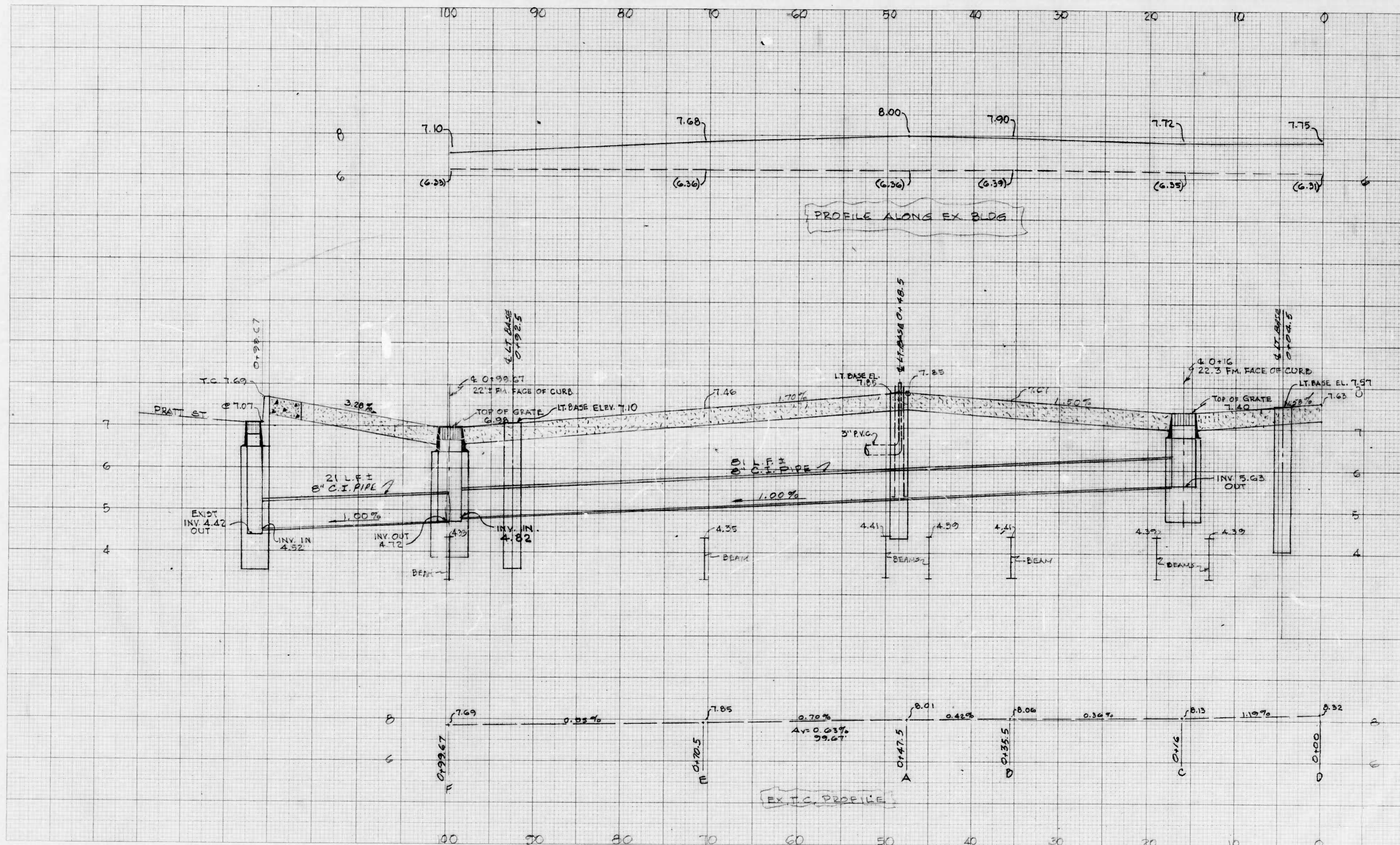
M4



CROSS SECTIONS
Scale 1 inch = 10 feet

Original Plotted by JHE Date 12-4-84
 Original Checked by Date
 Template By CEC Date 11-19-85
 Area by Date
 Plots Plotted by Date
 Plots Checked by Date
 Area by Date
 Area Checked by Date

M5



CROSS SECTIONS
Scale 1 inch = 4 feet
As Noted

Original Plotted by	C	Date	4/19
Original Checked by		Date	
Template by		Date	
Area by		Date	
Insets Plotted by		Date	
Insets Checked by		Date	
Area by		Date	
Area Checked by		Date	

BOOK NO. SEE FILE

PROJECT PIER 4 & SIX FLAGS CENTER

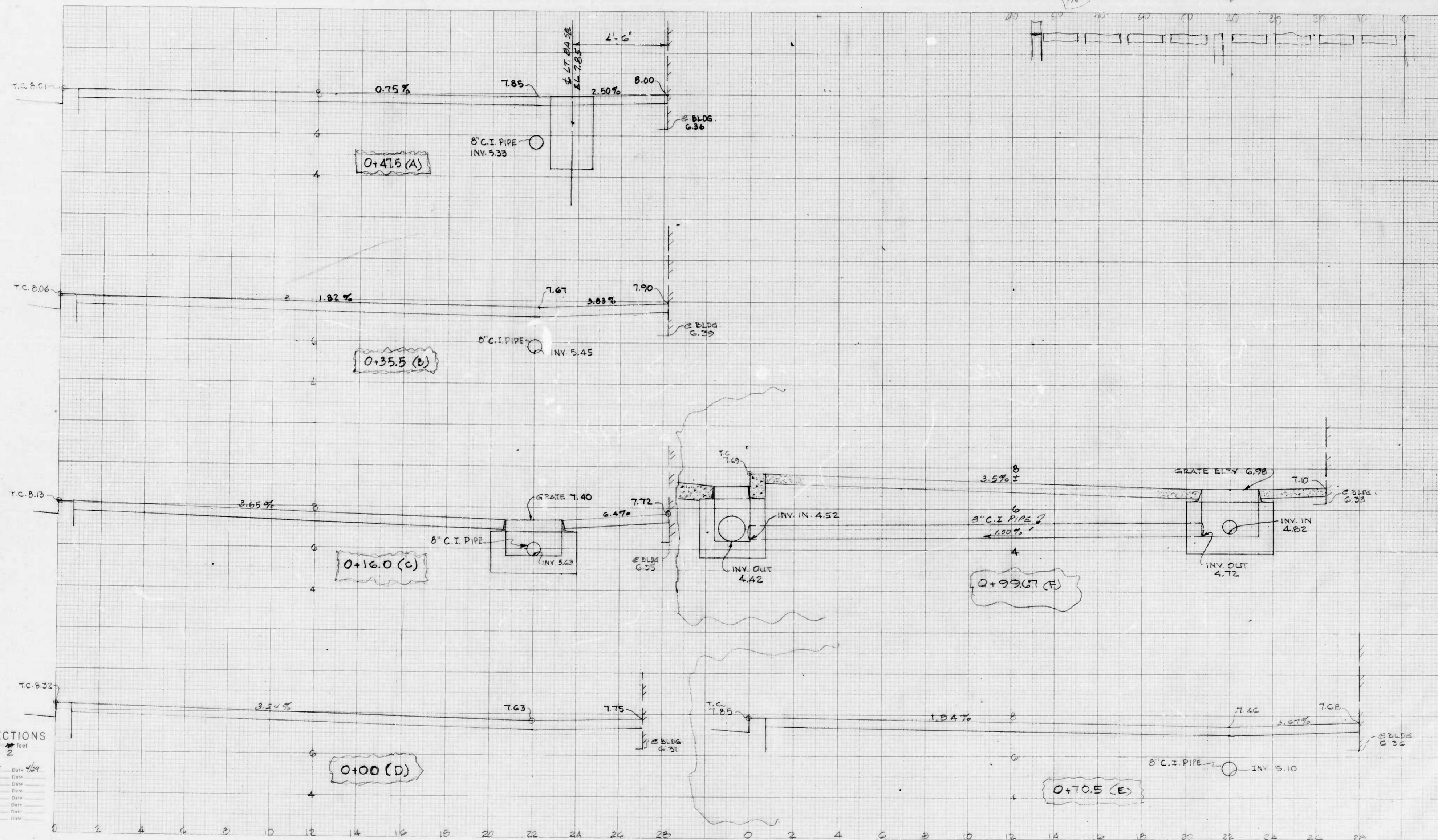
CONTRACT NO. MAINT DIV '85

SHEET NO. 1 OF 2

DESCRIPTION PEDESTRIAN WALK ALONG PRATT ST

STATION TO STATION

M10



CROSS SECTIONS
Scale 1 inch = 2 feet

Original Plotted by: C Date: 4/29
 Original Checked by: Date:
 Template by: Date:
 Final Plotted by: Date:
 Final Checked by: Date:
 Area by: Date:
 Area checked by: Date:

BOOK NO. SEE FILE

PROJECT PIER 4 @ SIX FLAGS CENTER

CONTRACT NO. MAINT. DIV. '85

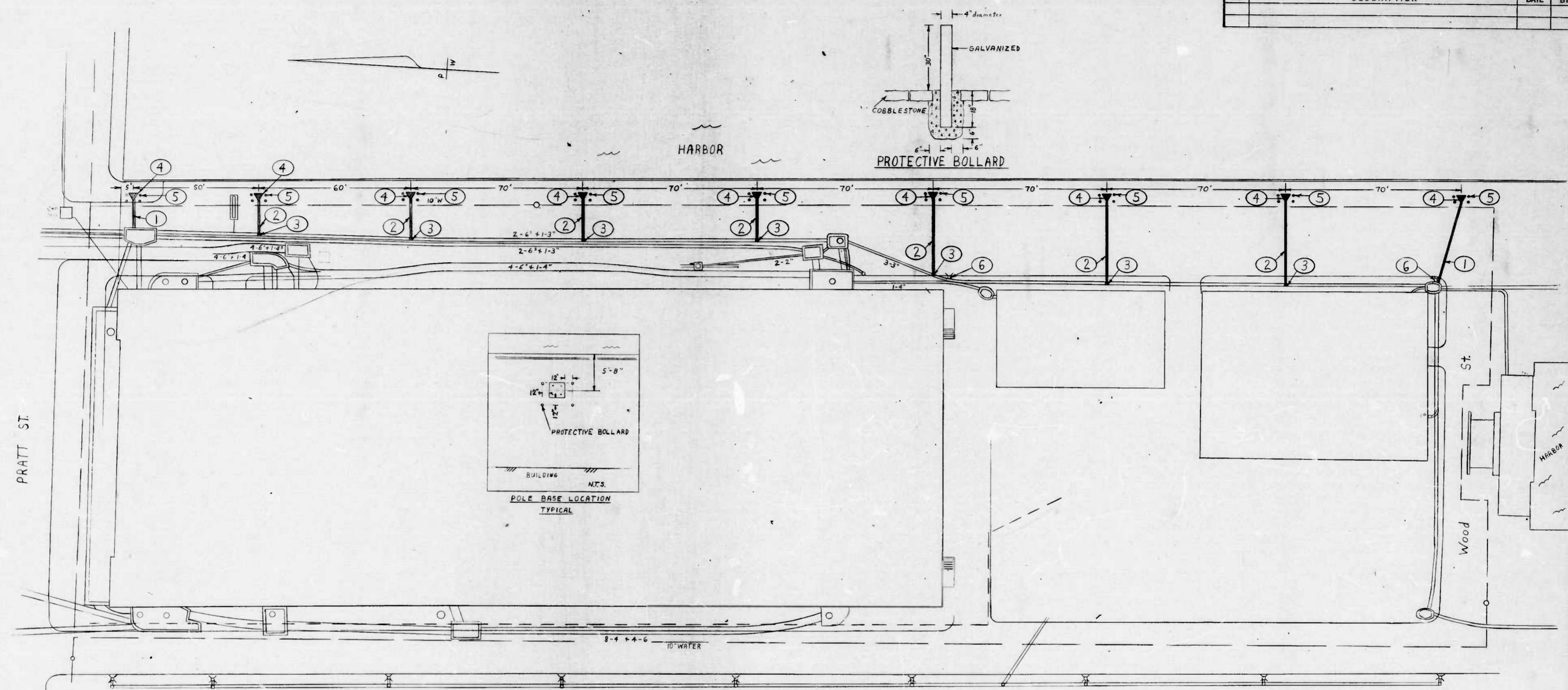
SHEET NO. 2 OF 2

DESCRIPTION PEDESTRIAN MALL ALONG PRATT ST

STATION TO STATION

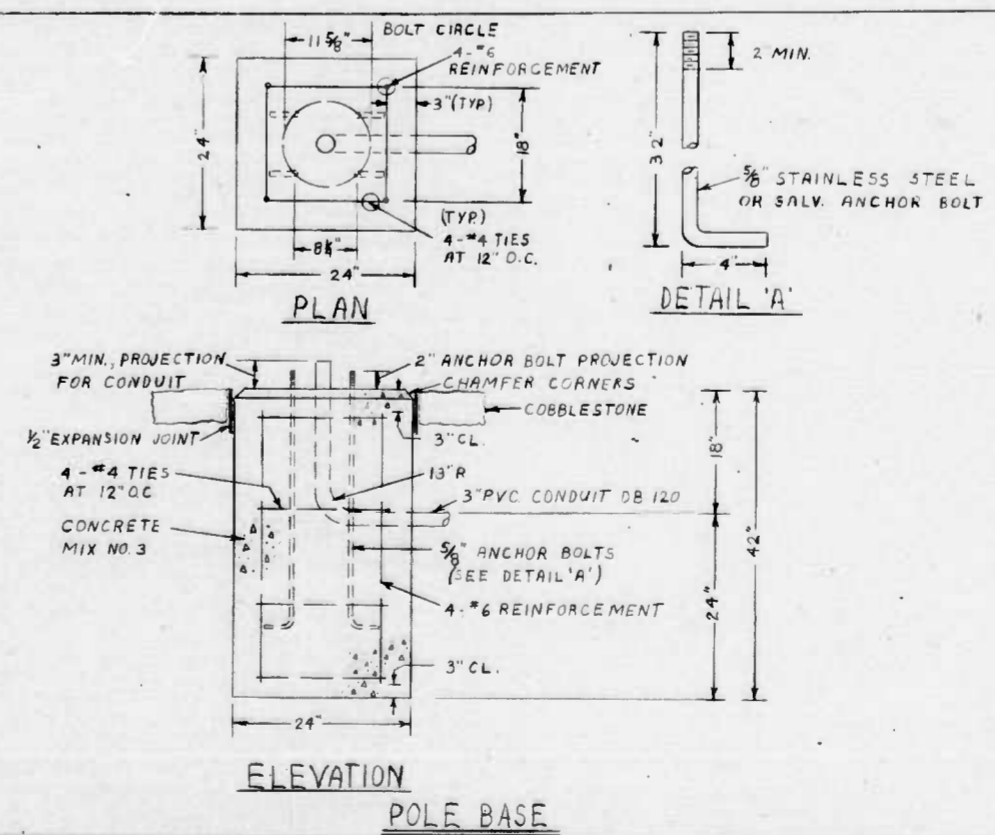
FILE REF.

REVISIONS			
NO.	DESCRIPTION	DATE	BY



- NOTES:
- 1 Install 1-3" duct connection from manhole to pole base as shown.
 - 2 Install 1-3" duct from handbox to pole base as shown.
 - 3 Install handbox per BC 804.01 on existing duct line. Notify Conduit Inspector (396-1515) for duct assignment.
 - 4 Install pole base per detail.
 - 5 Install 4-4 dia. concrete filled protective bollards as shown.
 - 6 Remove pole base.

- LEGEND:
- ▲ Pole base
 - 1-3" Duct DB 120
 - Handbox
 - Protective bollard



- Material Required
- 7- Handboxes
 - 9- Pole Bases
 - 242'-1-3" Duct DB 120
 - (9-150 Watt Sodium Fixtures Complete)
 - (By Others (Otterbein type)
 - 36- Protective Bollards 4 dia Galvanized Pipe

CITY OF BALTIMORE
DEPARTMENT OF PUBLIC WORKS
BUREAU OF HIGHWAYS
CONDUIT SECTION

PIER - 4
EAST SIDE STREET LIGHT LAYOUT

SCALE 1" = 20' DATE February 6, 1985
ENVIRONMENTAL SERVICES DIVISION SHEET 1 OF 1

DRAWN BY James Allen
EXAMINED BY

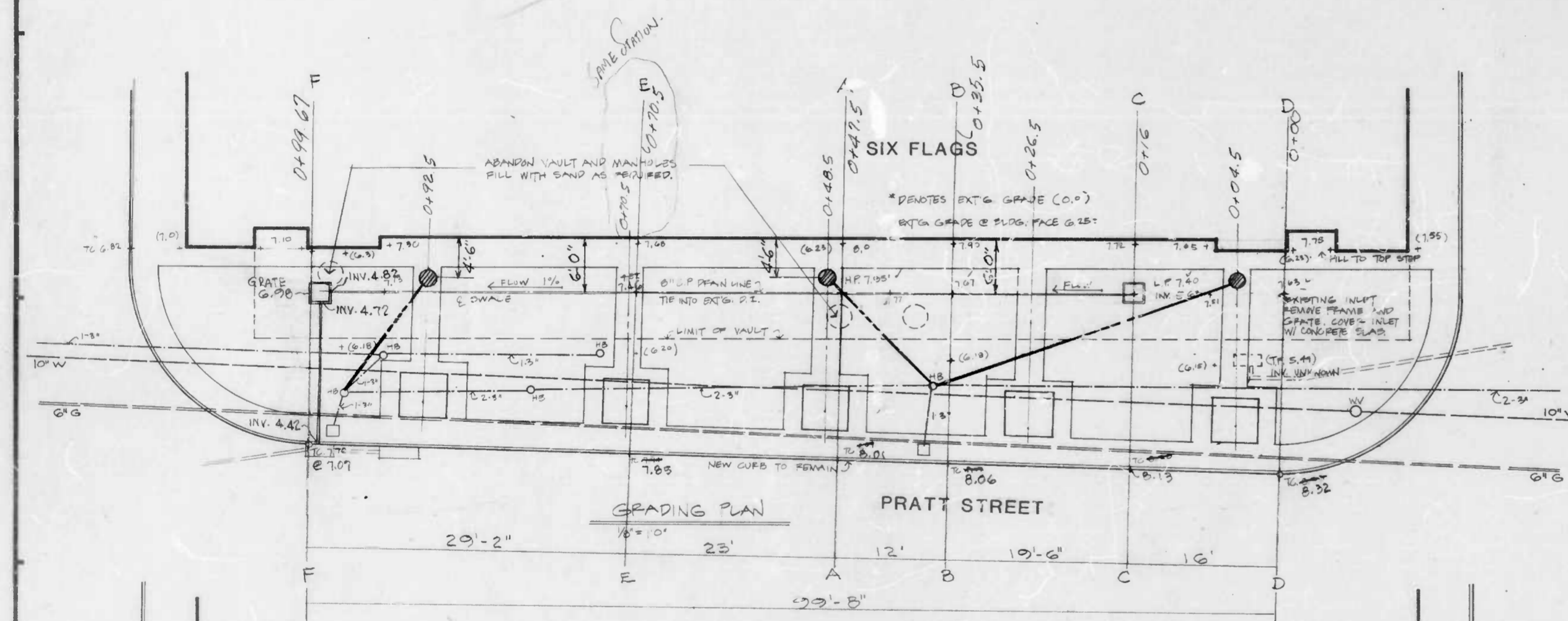
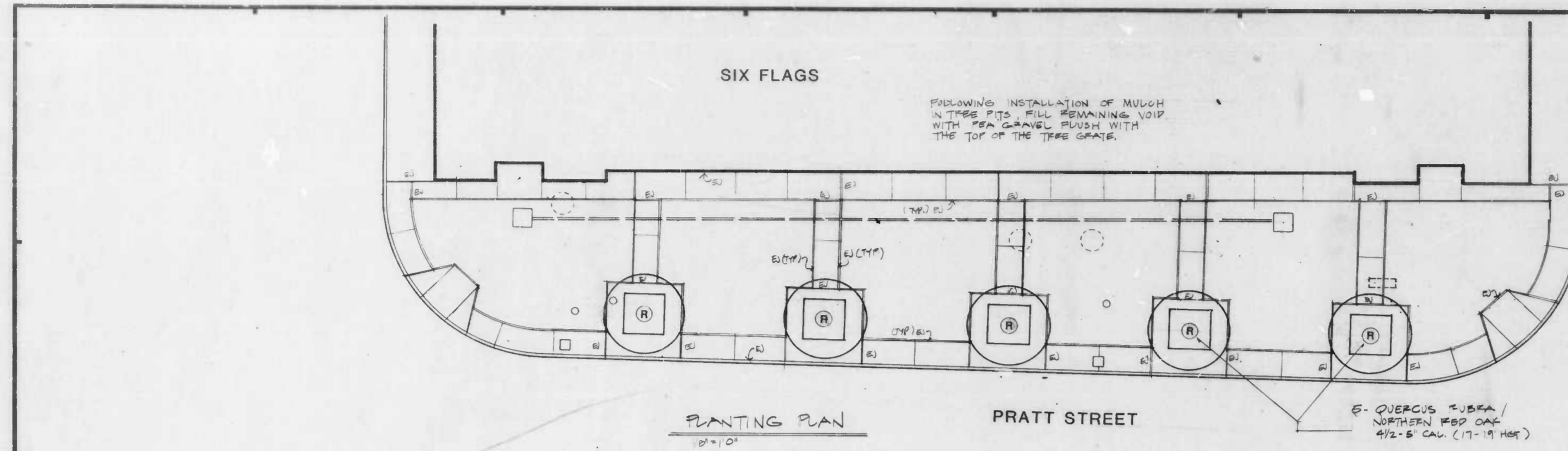
FILE REF.



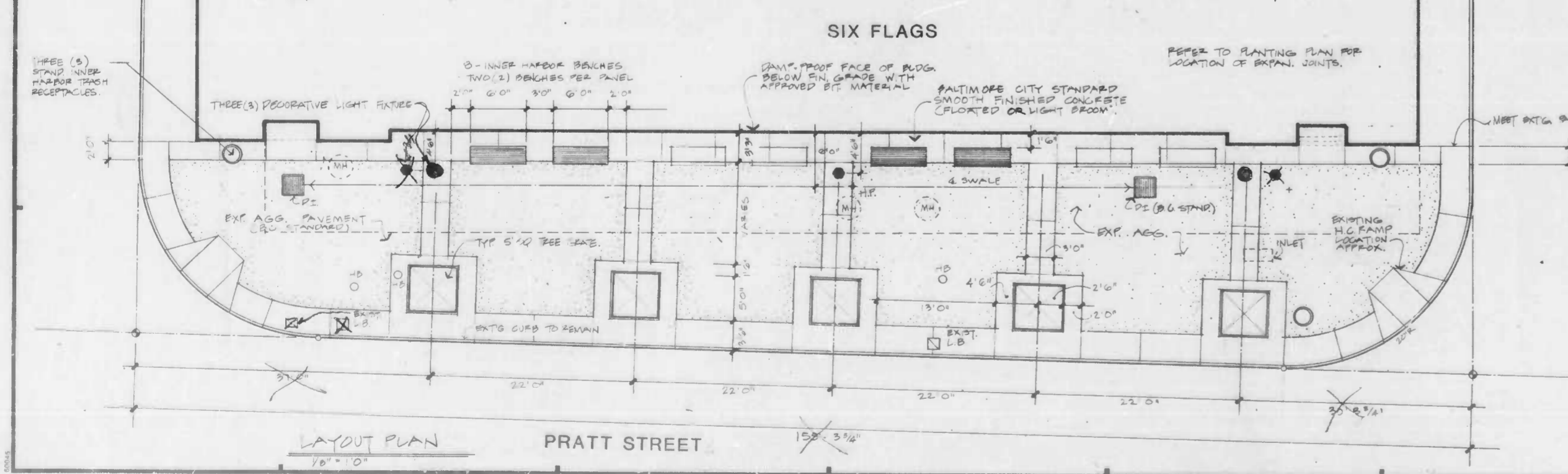
Land Design / Research, Inc.

Planning, Urban Design,
Landscape Architecture &
Architecture

5560 Sterrett Place, Suite 300
Columbia, Maryland 21044-2660
301/730-9191



● NEW LIGHT BASE (3)
- - - 1-3" DUCT (MUST BE FIELD MEASURED)
ESTIMATED: 65 L.F.



Sheet Title
POWER STA / SIX FLAGS
PRATT ST ENTRANCE,
GRADING LAYOUT PLANT PLAN
Scale 1/8" = 1'0"

Revisions		
No.	Description	Date

Project Number 15031.00	Date 2.5.25
Sheet Number 1 OF 2	

MI