

Land Design / Research, Inc.
 5560 Sterrett Place, Suite 300 Columbia, Maryland 21044 301/730-9191
COLUMBUS SQUARE
BALTIMORE, MARYLAND
EXISTING CONDITIONS & DEMOLITION PLAN

APPROVALS	DATE	REVISIONS
DRAWN	AUG. 1982	
CHECKED		
APPROVED		

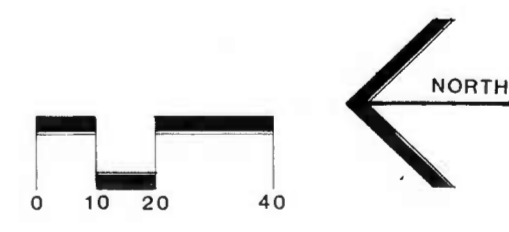
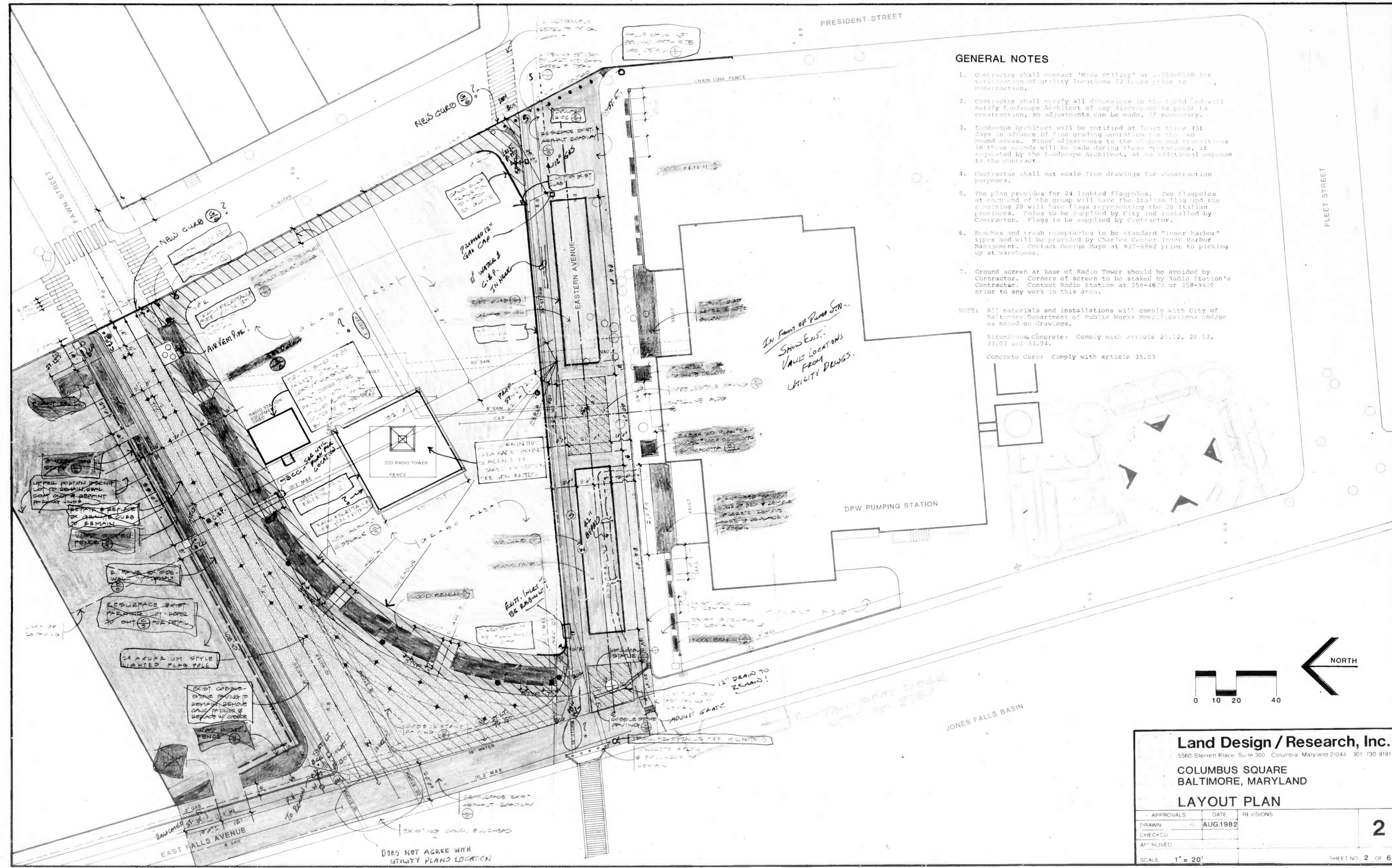
SCALE: 1" = 20'

SHEET NO. 1 OF 6

GENERAL NOTES

1. Contractor shall contact 'Miss Utility' at 375-8188 for verification of utility locations 72 hours prior to construction.
2. Contractor shall verify all dimensions in the field and will notify Landscape Architect of any discrepancies prior to construction, so adjustments can be made, if necessary.
3. Landscape Architect will be notified at least three (3) days in advance of fine grading operation for the two round areas. Minor adjustments to the shapes and transitions in these rounds will be made during these operations, as requested by the Landscape Architect, at no additional expense to the contract.
4. Contractor shall not scale from drawings for construction purposes.
5. The plan provides for 24 lighted flagpoles. Two flagpoles at each end of the group will have the Italian flag and the remaining 20 will have flags representing the 20 Italian provinces. Poles to be supplied by City and installed by Contractor. Flags to be supplied by Contractor.
6. Bins and trash receptacles to be standard "inner harbor" types and will be provided by Charles Center Inner Harbor Management. Contact George Mayo at 837-0862 prior to picking up at warehouse.
7. Ground screen at base of Radio Tower should be avoided by Contractor. Corners of screen to be skewed by Radio Station's Contractor. Contact Radio Station at 358-4600 or 358-9600 prior to any work in this area.

NOTE: All materials and installations will comply with City of Baltimore Department of Public Works Specifications and/or as noted on drawings.
 Bituminous Concrete: Comply with article 20.12, 20.13, 33.03 and 33.04.
 Concrete Curb: Comply with article 35.03



Land Design / Research, Inc.
 5560 Sterrett Place Suite 300 Columbia Maryland 21044 301 730 9191

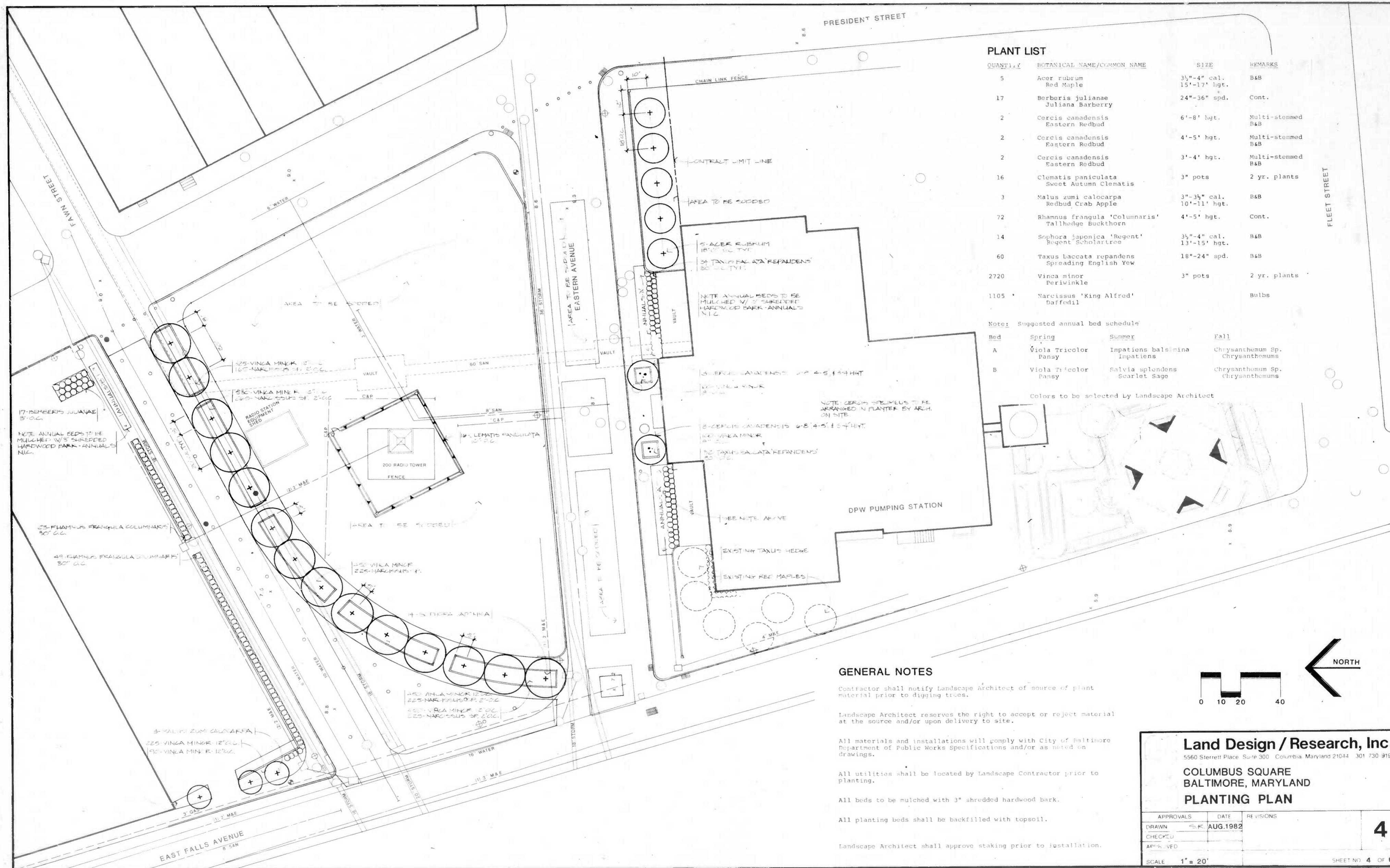
**COLUMBUS SQUARE
 BALTIMORE, MARYLAND**

LAYOUT PLAN

APPROVALS	DATE	REVISIONS
DRAWN	AUG. 1982	
CHECKED		
APPROVED		

SCALE 1" = 20'

SHEET NO. 2 OF 6



PLANT LIST

QUANTITY	BOTANICAL NAME/COMMON NAME	SIZE	REMARKS
5	Acer rubrum Red Maple	3 1/2"-4" cal. 15'-17' hgt.	B&B
17	Berberis julianae Juliana Barberry	24"-36" spd.	Cont.
2	Cercis canadensis Eastern Redbud	6'-8' hgt.	Multi-stemmed B&B
2	Cercis canadensis Eastern Redbud	4'-5' hgt.	Multi-stemmed B&B
2	Cercis canadensis Eastern Redbud	3'-4' hgt.	Multi-stemmed B&B
16	Clematis paniculata Sweet Autumn Clematis	3" pots	2 yr. plants
3	Malus zumi calocarpa Redbud Crab Apple	3"-3 1/2" cal. 10'-11' hgt.	B&B
72	Rhamnus frangula 'Columaris' Tallhedge Buckthorn	4'-5' hgt.	Cont.
14	Sophora japonica 'Regent' Regent Scholar tree	3 1/2"-4" cal. 13'-15' hgt.	B&B
60	Taxus laccata rupandens Spreading English Yew	18"-24" spd.	B&B
2720	Vinca minor Periwinkle	3" pots	2 yr. plants
1105	Narcissus 'King Alfred' Daffodil		Bulbs

Note: Suggested annual bed schedule

Bed	Spring	Summer	Fall
A	Viola Tricolor Pansy	Impatiens balsamina Impatiens	Chrysanthemum Sp. Chrysanthemums
B	Viola Tricolor Pansy	Salvia splendens Scarlet Sage	Chrysanthemum Sp. Chrysanthemums

Colors to be selected by Landscape Architect

GENERAL NOTES

- Contractor shall notify Landscape Architect of source of plant material prior to digging trees.
- Landscape Architect reserves the right to accept or reject material at the source and/or upon delivery to site.
- All materials and installations will comply with City of Baltimore Department of Public Works Specifications and/or as noted on drawings.
- All utilities shall be located by Landscape Contractor prior to planting.
- All beds to be mulched with 3" shredded hardwood bark.
- All planting beds shall be backfilled with topsoil.
- Landscape Architect shall approve staking prior to installation.

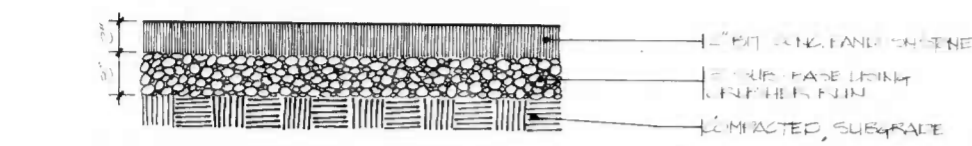
Land Design / Research, Inc.
 5560 Sterrett Place, Suite 300, Columbia, Maryland 21044 301 730 9191

**COLUMBUS SQUARE
 BALTIMORE, MARYLAND
 PLANTING PLAN**

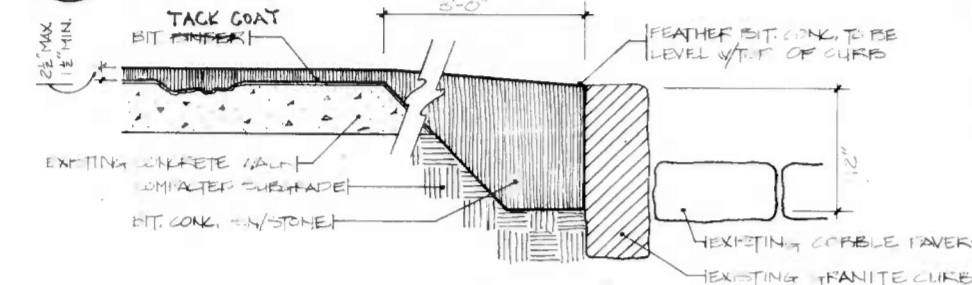
APPROVALS	DATE	REVISIONS
DRAWN	SK	AUG. 1982
CHECKED		
APPROVED		

SCALE 1" = 20'

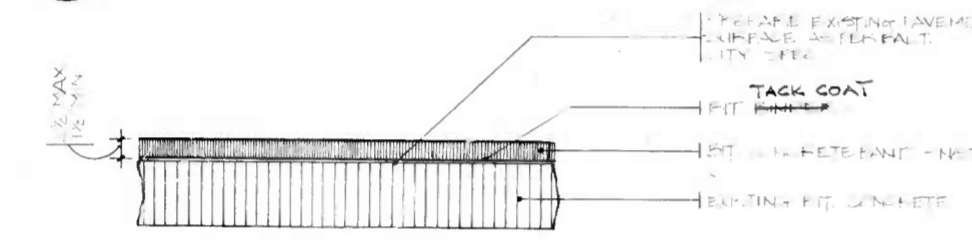
4
SHEET NO. 4 OF 6



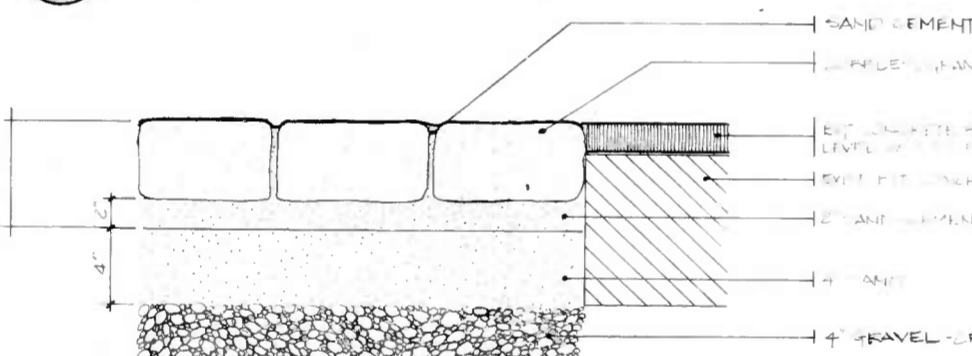
A
5 **TEMPORARY SIDEWALK**
1-1/2 - 1-0



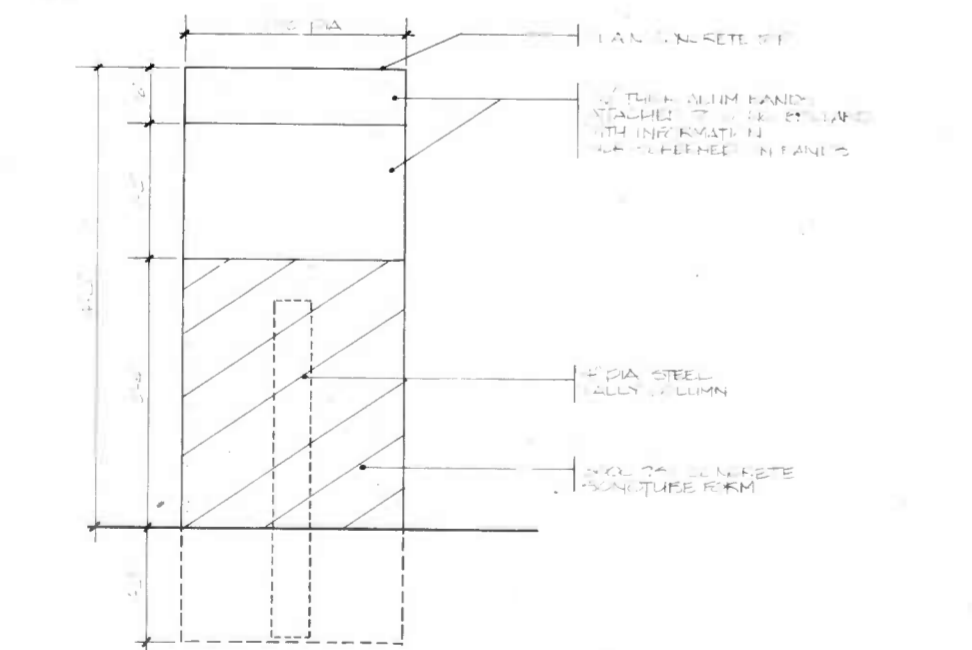
B
5 **REPAVING EXISTING SIDEWALK**
1 - 1-0



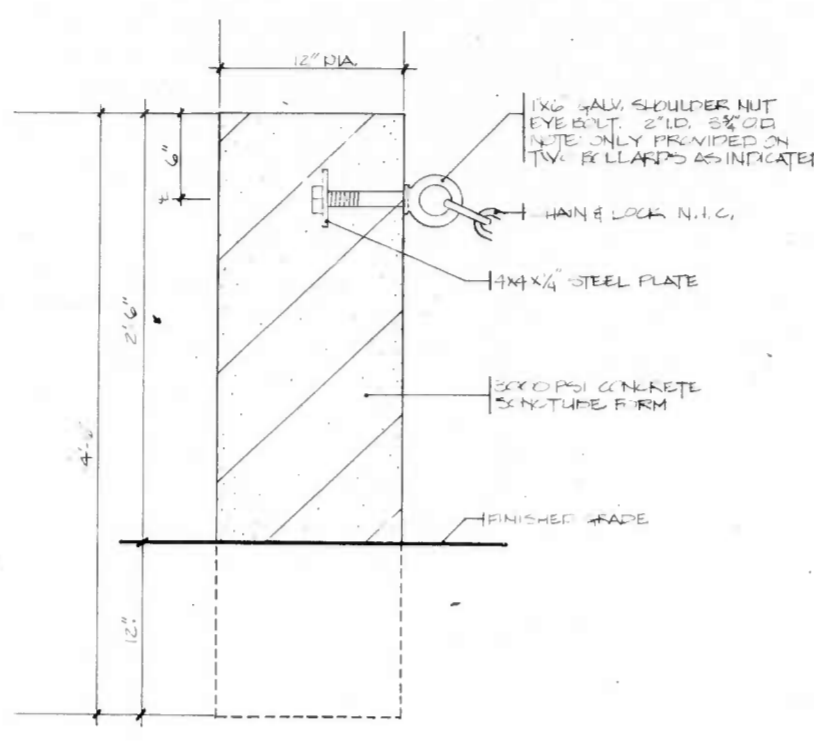
C
5 **REPAVING EXISTING PARKING**
1-1/2 - 1-0



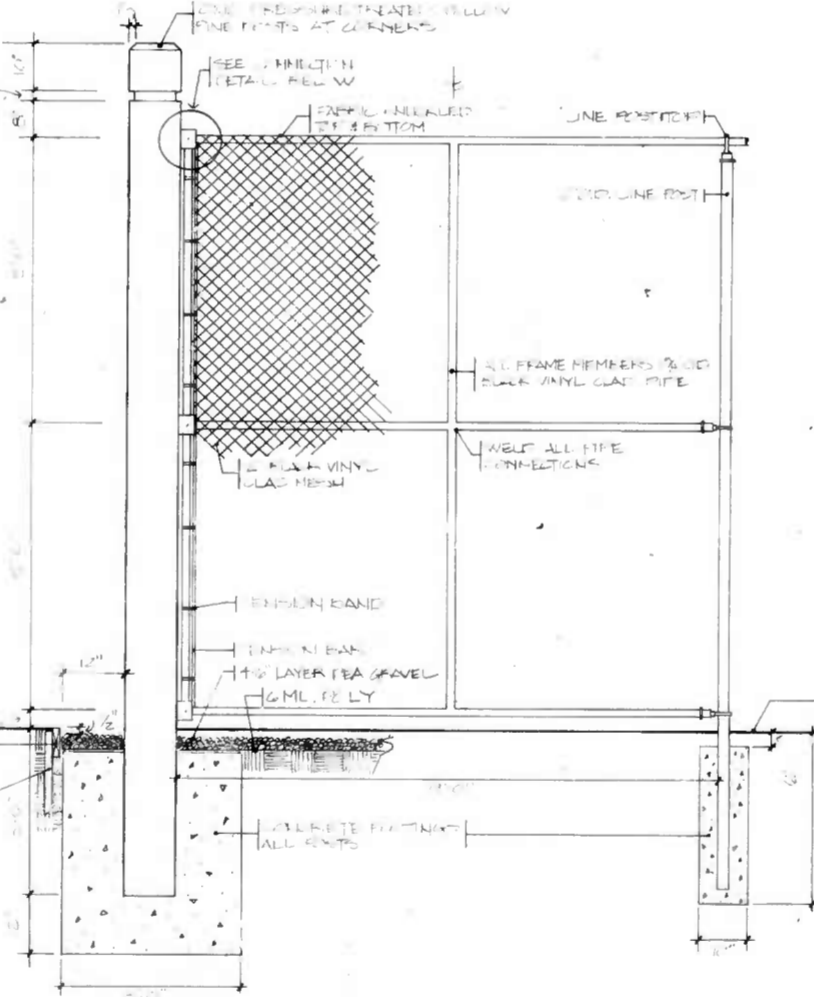
D
5 **COBBLE PAVEMENT**
1-1/2 - 1-0



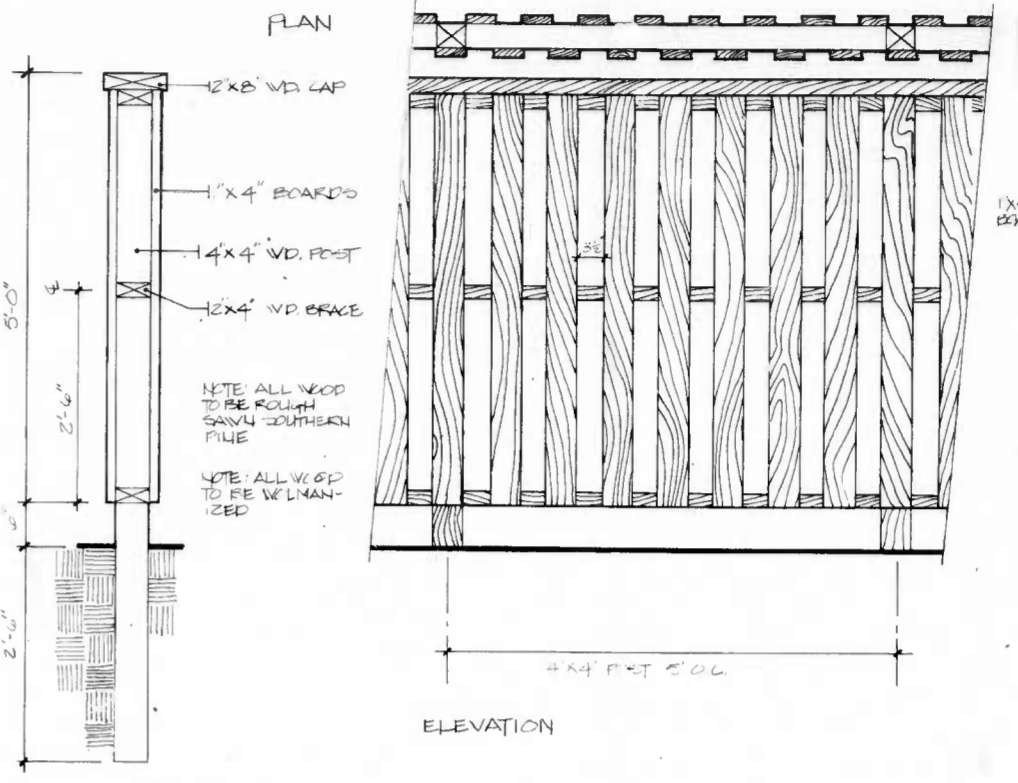
E
5 **CONCRETE BOLLARD / DIRECTORY**
1 - 1-0



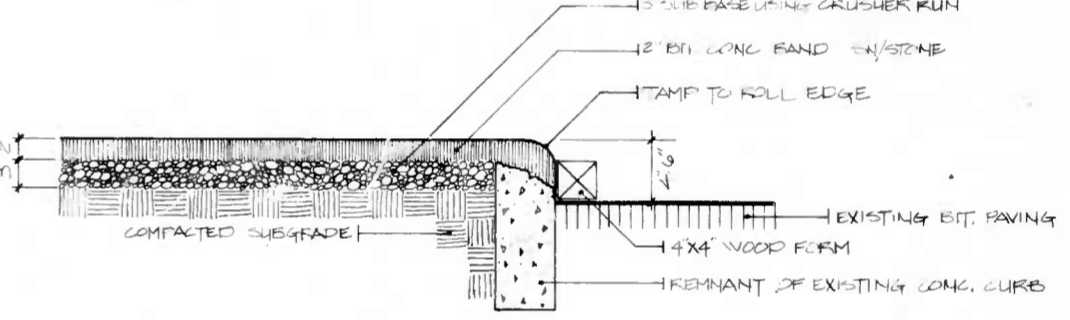
F
5 **CONCRETE BOLLARD**
1-1/2 - 1-0



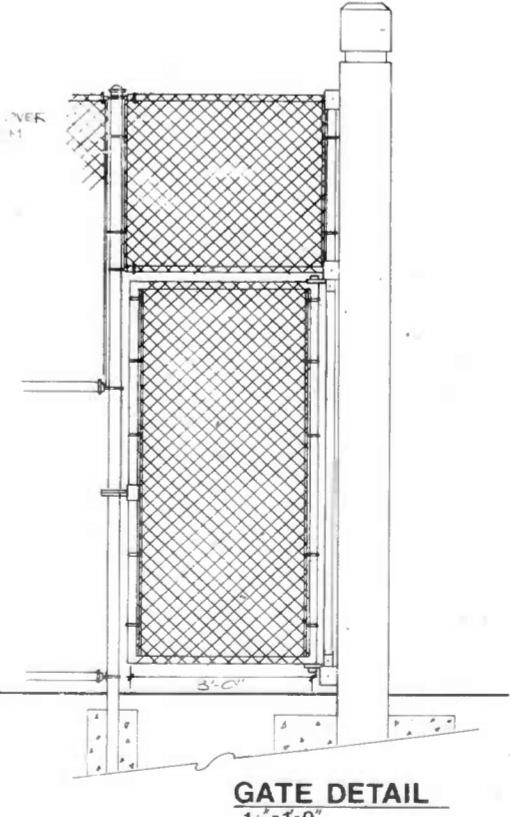
G
5 **CHAIN LINK FENCE W/ WOOD END POSTS**
1/2 - 1-0



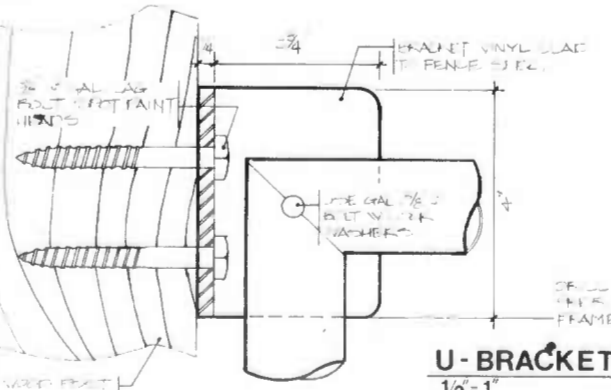
H
5 **BOARD ON BOARD FENCE**
3/4 - 1-0



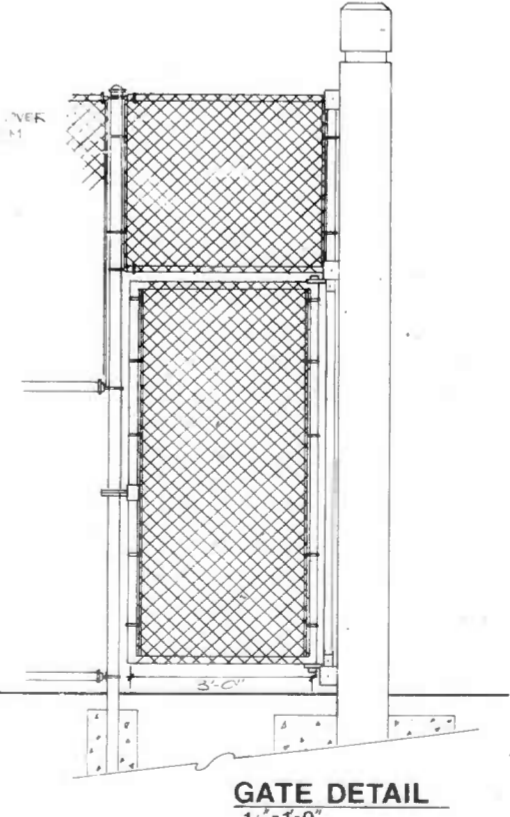
I
5 **TEMP. WALK BEHIND EXISTING CURB**
1 - 1-0



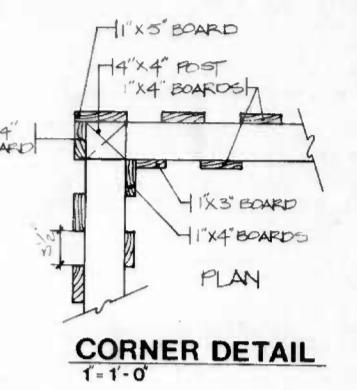
J
5 **WOOD CURB**
1-1/2 - 1-0



U-BRACKET
1/2 - 1



GATE DETAIL
1/2 - 1-0



CORNER DETAIL
1-1-0

Land Design / Research, Inc.
5560 Sterrett Place, Suite 300 Columbia, Maryland 21044 301/730-9191

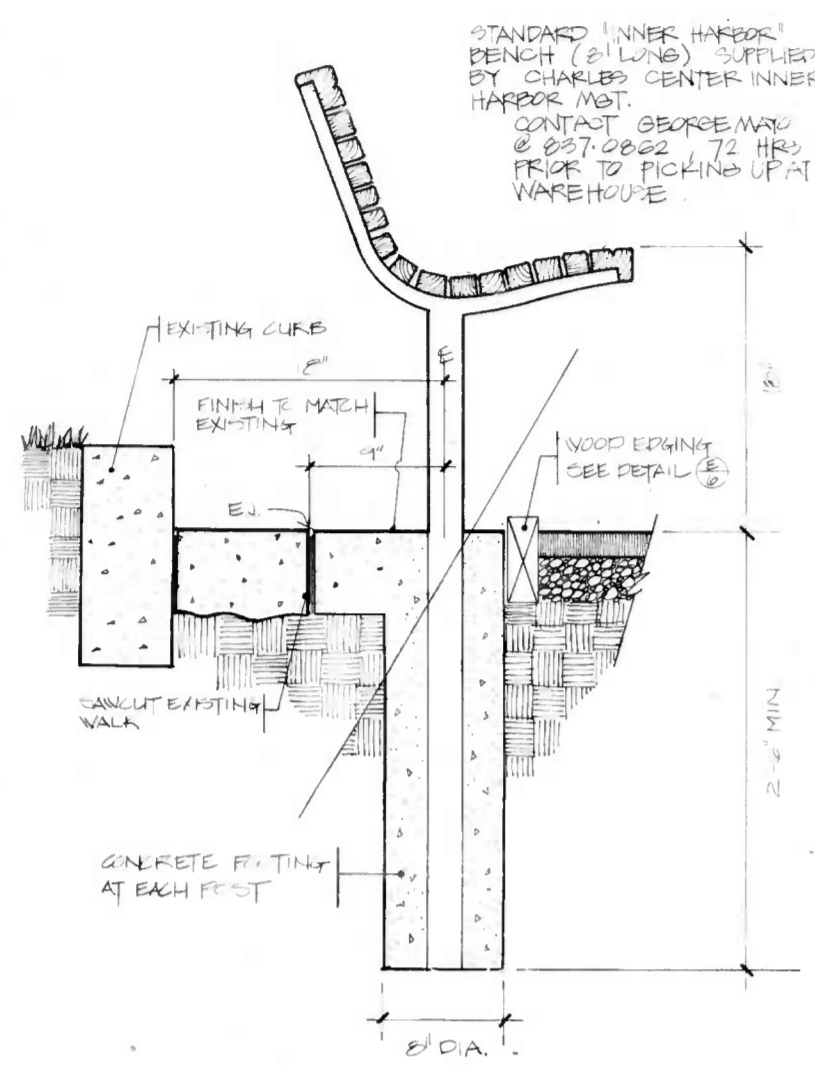
COLUMBUS SQUARE
BALTIMORE, MARYLAND

CONSTRUCTION DETAILS

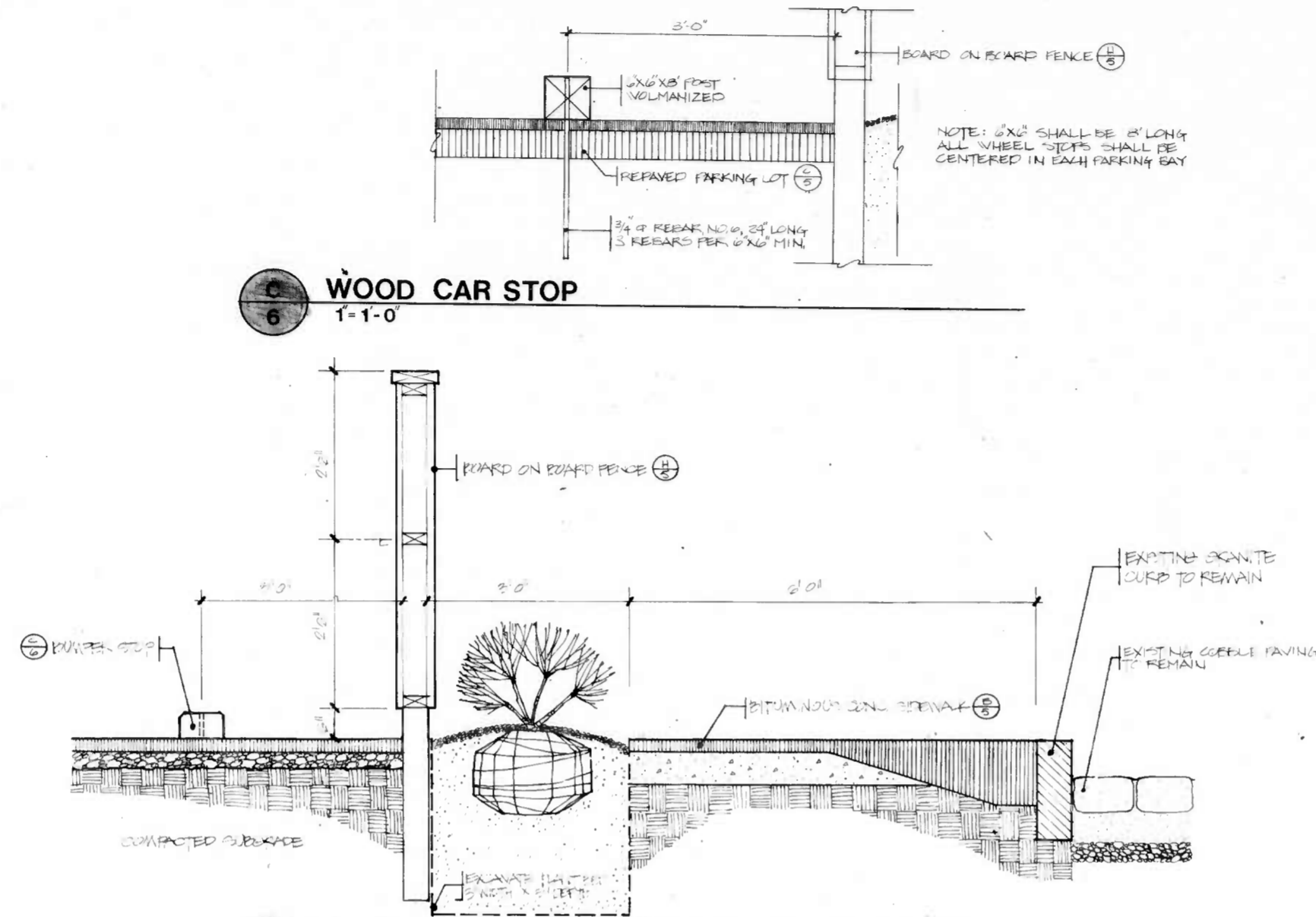
APPROVALS	DATE	REVISIONS
DRAWN: SR	AUG 1982	
CHECKED:		
APPROVED:		
SCALE:		

5

SHEET NO. 5 OF 6

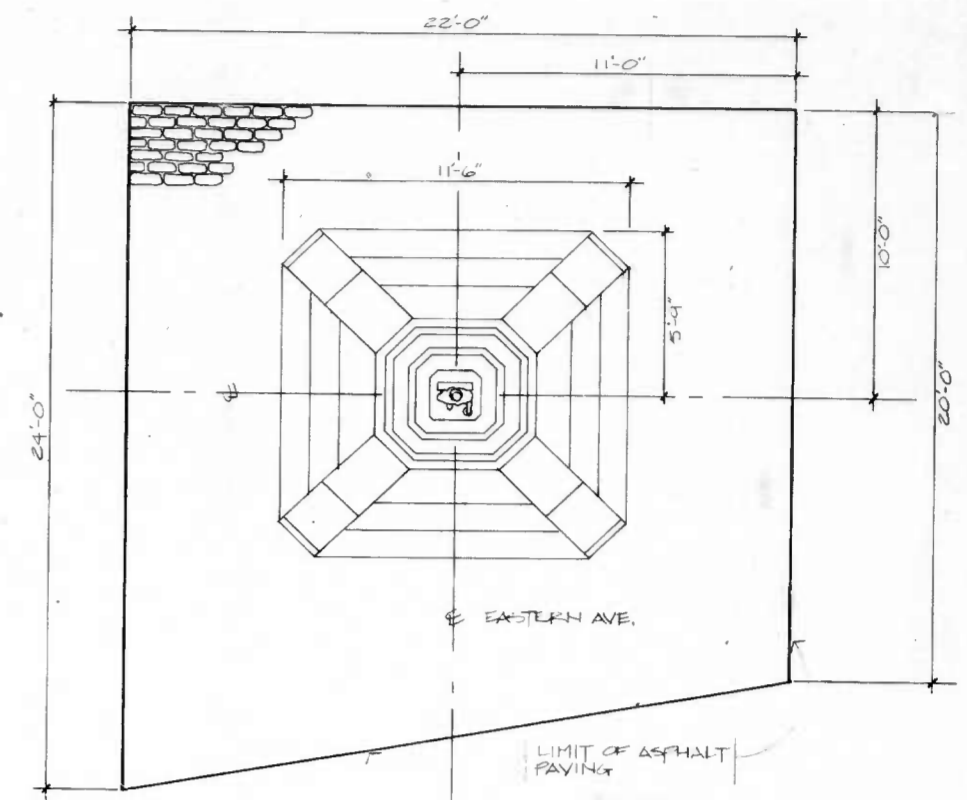


A
BENCH INSTALLATION
N.T.S.



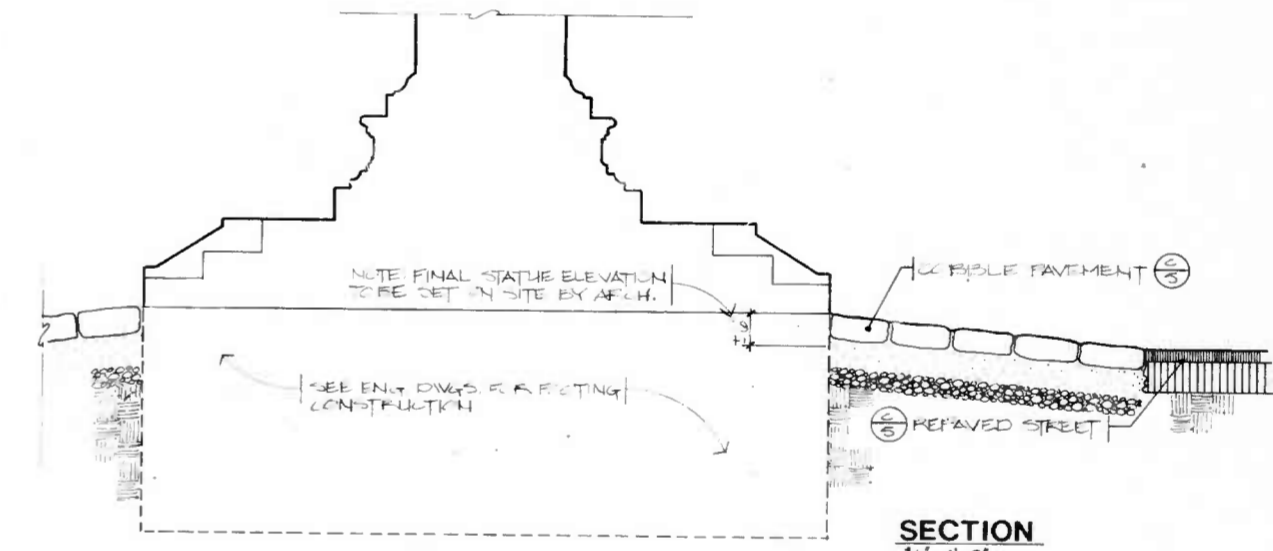
C
WOOD CAR STOP
1'-1'-0"

D
SECTION THROUGH PARKING LOT PLANTING
3/4'-1'-0"

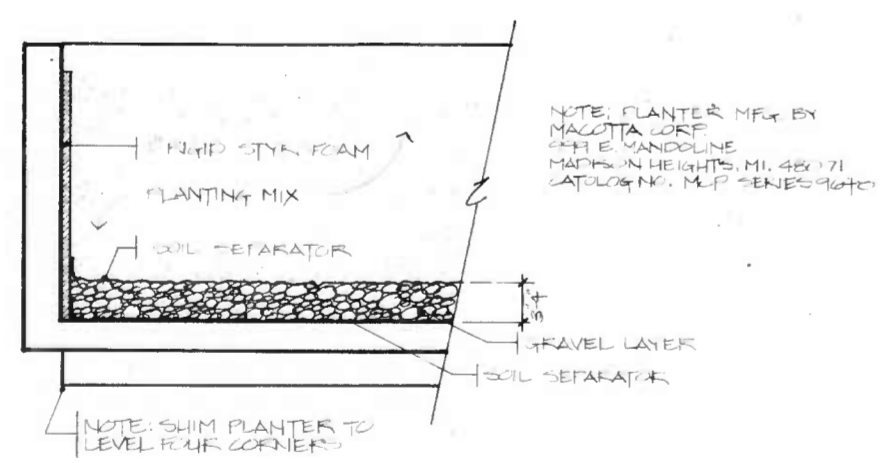


PLAN
1/4'-1'-0"

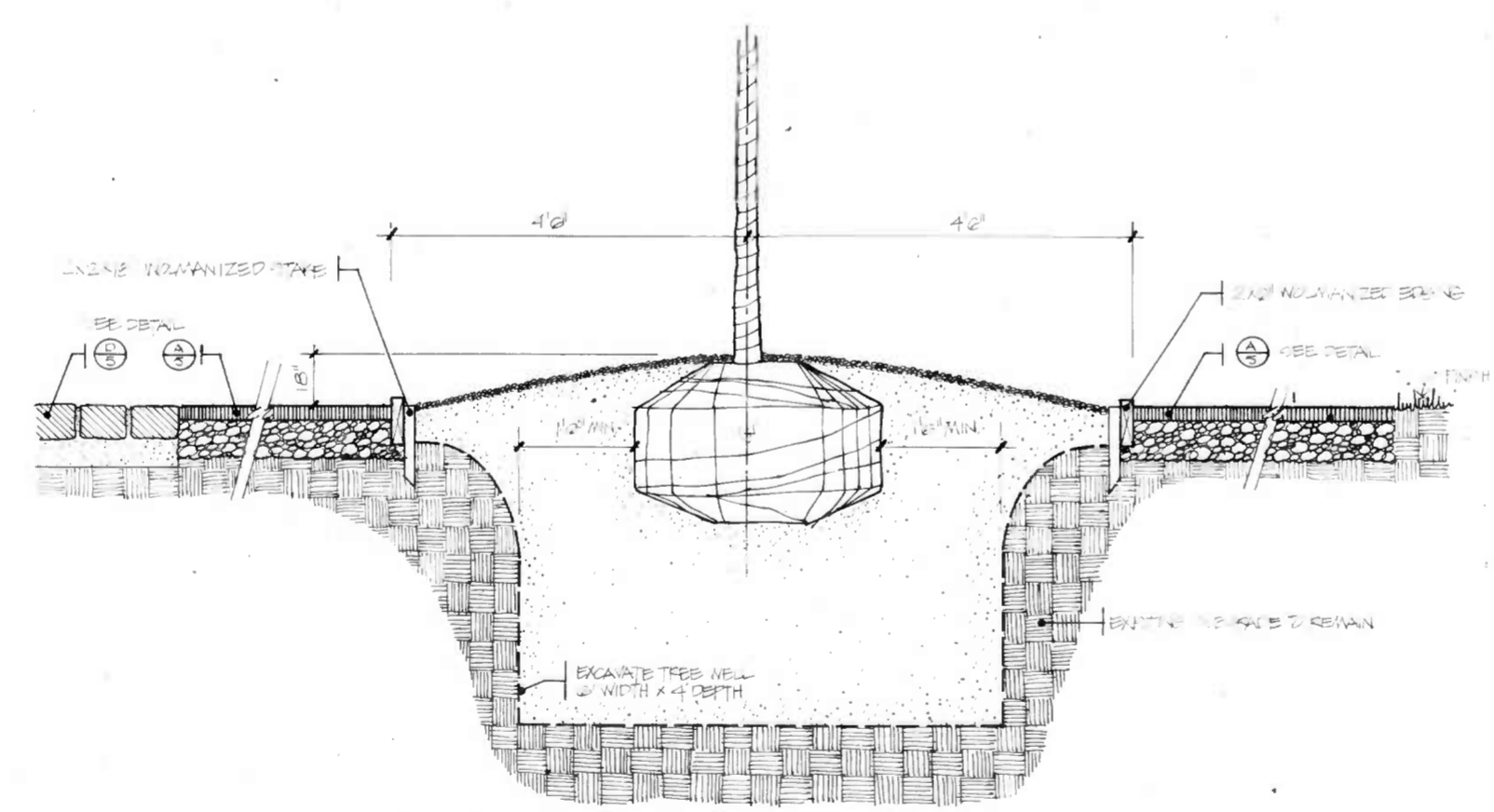
NOTE: STATUE TO BE RELICATED FROM WEST SIDE OF SQUARE IN ORDER TO BE PLACED BY OTHERS. ORIENT STATUE TO THE WEST FACING SQUARE.



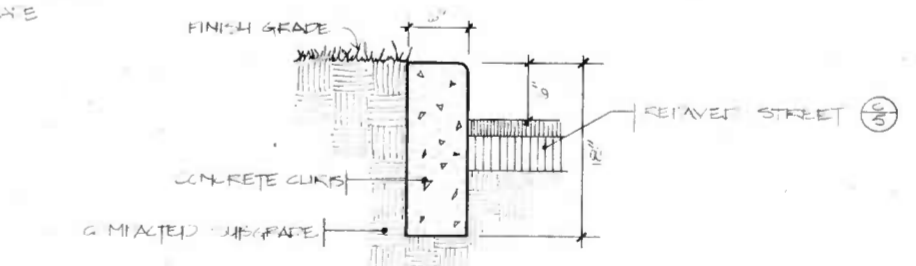
F
COLUMBUS STATUE
1/2'-1'-0"



B
PLANTER DETAIL
N.T.S.



E
SECTION THROUGH TREE ISLAND
N.T.S.



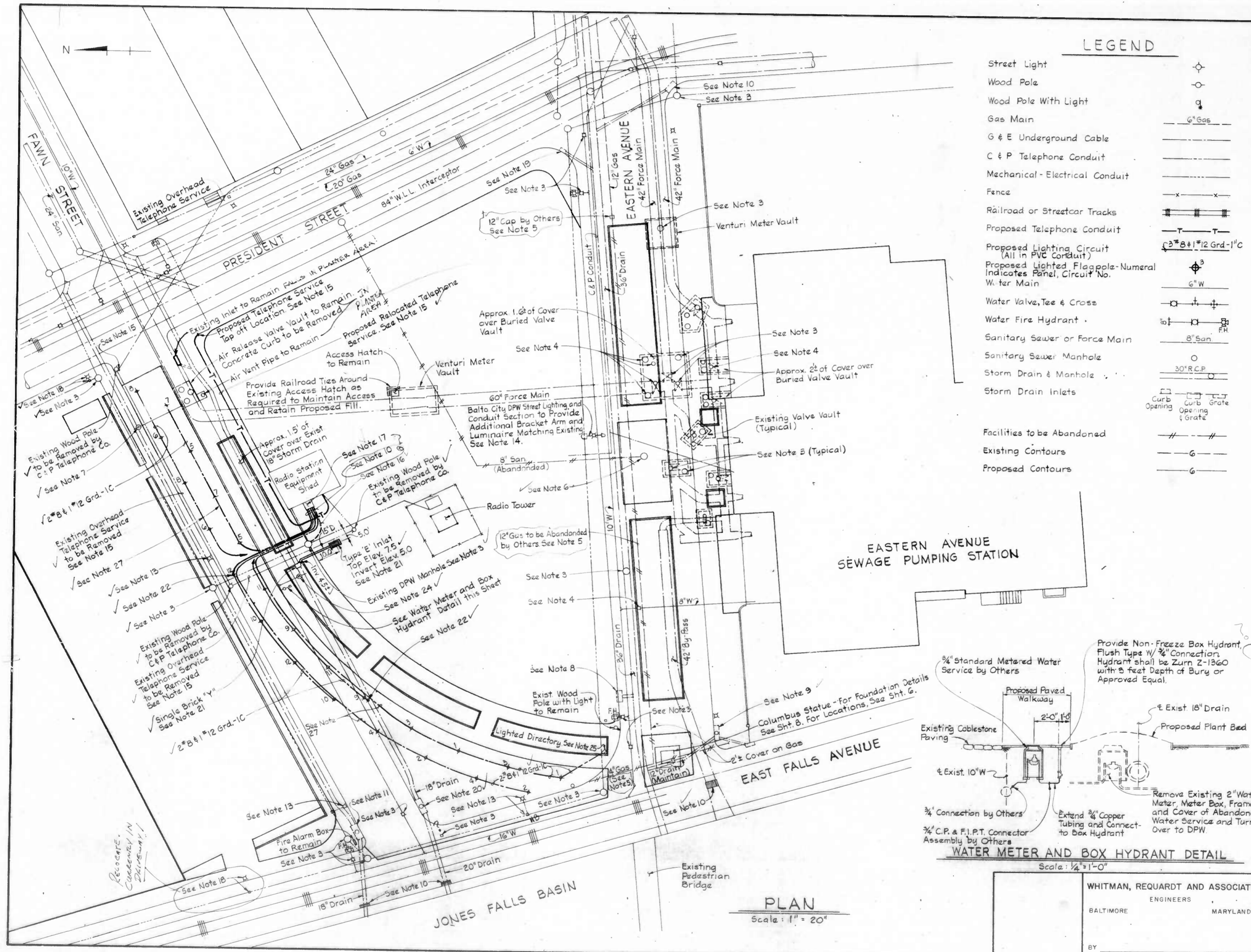
G
CONCRETE CURB
1'-1'-0"

Land Design / Research, Inc.
5560 Sterrett Place, Suite 300 Columbia, Maryland 21044 301/730-9191

COLUMBUS SQUARE
BALTIMORE, MARYLAND
CONSTRUCTION DETAILS

APPROVALS	DATE	REVISIONS
DRAWN: T.F.R.	AUG. 1982	
CHECKED:		
APPROVED:		

SCALE: SHEET NO. 6 OF 6

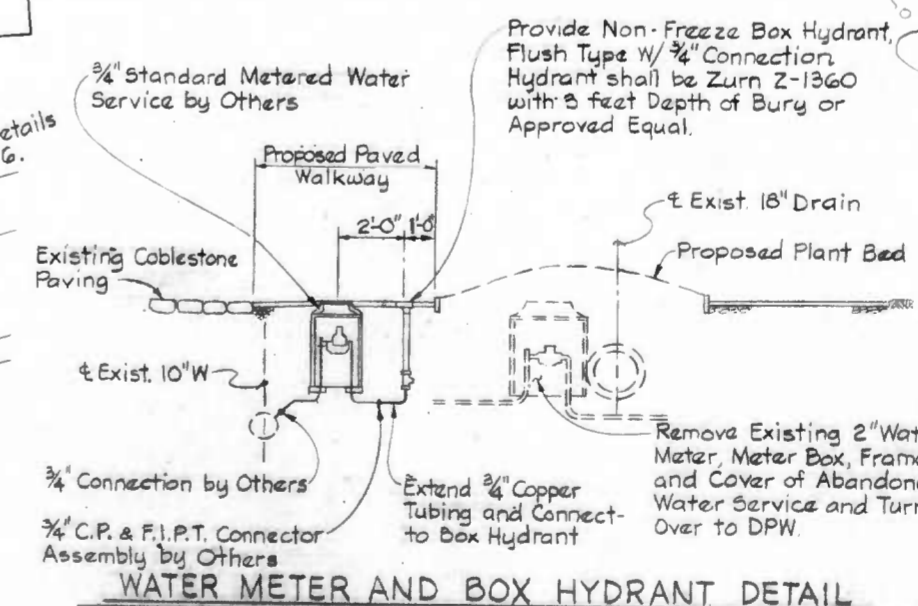


LEGEND

- Street Light
 - Wood Pole
 - Wood Pole With Light
 - Gas Main
 - G & E Underground Cable
 - C & P Telephone Conduit
 - Mechanical-Electrical Conduit
 - Fence
 - Railroad or Streetcar Tracks
 - Proposed Telephone Conduit
 - Proposed Lighting Circuit (All in PVC Conduit)
 - Proposed Lighted Flappole-Numerical Indicates Panel, Circuit No.
 - Water Main
 - Water Valve, Tee & Cross
 - Water Fire Hydrant
 - Sanitary Sewer or Force Main
 - Sanitary Sewer Manhole
 - Storm Drain & Manhole
 - Storm Drain inlets
- Facilities to be Abandoned
- Existing Contours
- Proposed Contours

GENERAL NOTES

1. PLAN LOCATION OF EXISTING UTILITIES ARE APPROXIMATE ONLY. CONTRACTOR SHALL CONTACT "MISS UTILITY" AT 1-559-0100 FOR VERIFICATION OF UTILITY LOCATIONS 72 HOURS PRIOR TO ANY EXCAVATION.
2. ALL EXCAVATION IN THE VICINITY OF EXISTING UTILITIES SHALL BE CAREFULLY DONE BY HAND METHODS.
3. ADJUST FRAME AND COVER OF EXISTING MANHOLE, VAULT OR WATER VALVE TO FINISHED GRADE OF PROPOSED PAVING IN ACCORDANCE WITH BALTIMORE CITY STD. BC-576-22.
4. ADJUST FRAME AND COVER OF EXISTING MANHOLE OR WATER VALVE TO FINISHED GRADE IN PROPOSED PLANT OR SOO BED.
5. EXISTING 12" GAS MAIN IN EASTERN AVE. AND 4" GAS MAIN AT EAST FALLS AVE. TO BE ABANDONED BY OTHERS FROM A POINT 60-70 FEET WEST OF PRESIDENT STREET. NOTIFY BGAE AT 234-5691 AT LEAST 72 HOURS PRIOR TO NEED TO ABANDON THE MAIN.
6. REMOVE EXISTING MANHOLE FRAME AND COVER, PLUG INCOMING AND OUTGOING PIPE CONNECTIONS AND FILL MANHOLE WITH MATERIAL MEETING THE REQUIREMENTS FOR TRENCH BACKFILL.
7. EXISTING WATER METER TO BE REMOVED AND CONNECTION ABANDONED BY OTHERS. FILL ABANDONED METER BOX WITH MATERIAL MEETING THE REQUIREMENTS FOR TRENCH BACKFILL PRIOR TO PAVING.
8. REMOVE EXISTING FRAME AND GRATE AND PROVIDE NEW TYPE NO. 1 "E" GRATE AND FRAME AND NEW PRECAST SPECIAL CURB FOR EXISTING STANDARD TYPE "E" CONSTRUCTION INLET. INSTALL GRATE, FRAME AND PRECAST CURB TO FINISHED GRADE OF PROPOSED CURB AND PAVING IN ACCORDANCE WITH BALTIMORE CITY STDS. BC-376.01 & BC-376.22.
9. EXISTING INLETS TO REMAIN. FEATHER NEW PAVING TO MATCH EXISTING INLET ELEVATION.
10. ADJUST EXISTING FRAME AND GRATE TO MATCH FINISHED GRADE OF PROPOSED PAVING IN ACCORDANCE WITH BALTIMORE CITY STD. BC-576-22.
11. PROVIDE NEW PRECAST STANDARD TYPE "N" INLET HEAD FOR EXISTING TYPE "N" INLET AND INSTALL TO FINISHED GRADE OF PROPOSED WALKWAY PAVING IN ACCORDANCE WITH BALTIMORE CITY STD. BC-376.01.
12. EXISTING UTILITIES SHALL NOT BE DAMAGED DURING CONSTRUCTION.
13. REMOVAL OF EXISTING POLE (ALUM., WOOD OR STEEL) AND LUMINAIRE BY BALTIMORE CITY DPW STREET LIGHT AND CONDUIT SECTION.
14. REUSE A BRACKET ARM AND LUMINAIRE (IF COMPATIBLE) FROM THOSE TO BE REMOVED. IF NOT COMPATIBLE, PROVIDE A NEW BRACKET ARM AND LUMINAIRE MATCHING EXISTING IN BRACKET ARM LENGTH AND MOUNTING OF LUMINAIRE.
15. TELEPHONE SERVICE RELOCATION TO BE PROVIDED BY THE C & P TELEPHONE COMPANY. EXISTING AERIAL SERVICE TO BE RELOCATED UNDERGROUND. COORDINATE ANY WORK TO BE DONE FOR TELEPHONE SERVICE RELOCATION WITH THE C & P TELEPHONE COMPANY AT 393-4211.
16. ELECTRICAL SERVICE 120/240 VOLT, SINGLE PHASE, 3 WIRE WILL BE PROVIDED BY B.G. & E. COMPANY. COORDINATE ALL ELECTRICAL SERVICE WORK WITH B.G. & E. COMPANY. NOTIFY AT 298-1891 72 HOURS PRIOR TO COMMENCEMENT OF WORK. SEE SHEET 2 FOR ADDITIONAL DETAILS.
17. PROVIDE AN ENCLOSURE SIMILAR TO A TRAFFIC CONTROL NOUSING, AS APPROVED BY B.G. & E. FOR INSTALLATION OF METEOPING. LIGHTING CONTROL AND LIGHTING PANEL. SEE SHEET 8 FOR DETAILS.
18. EXISTING STREET LIGHT TO REMAIN. ADJUST MANHOLE BOX TO FINISHED GRADE OF PROPOSED PAVING IN ACCORDANCE WITH BALTIMORE CITY STD. BC-576-22.
19. REMOVE EXISTING FRAME AND GRATE AND PROVIDE NEMA#1 TYPE R-3447-A FRAME GRATE AND INSTALL TO FINISHED GRADE OF PROPOSED PAVING.
20. REMOVE EXISTING CONCRETE INLET HEAD FROM EXISTING TYPE "M" INLET AND PROVIDE 3 NEMA#1 TYPE R-3447-A INLET FRAMES AND GRATES. NOTIFY THE EXISTING INLET AS REQUIRED TO INSTALL THE NEW FRAMES AND GRATES SIDE BY SIDE OVER THE EXISTING INLET AT THE FINISHED GRADE OF THE PROPOSED COBLESTONE PAVING.
21. INSTALL TYPE "E" INLET WITH TYPE NO. 1 "E" GRATE AND FRAME. INSTALL 15" CLASS IV ROP (ASTM C-76) IN ACCORDANCE WITH BALTIMORE CITY STD. BC-302.01. REMAINDER OF BACKFILL SHALL BE MATERIAL MEETING THE REQUIREMENTS FOR TRENCH BACKFILL COMPACTED IN 6" LAYERS. CONNECT NEW "E" DRAIN TO EXISTING 18" V.C. STORM DRAIN USING A SINGLE BRICK "Y" IN ACCORDANCE WITH BALTIMORE CITY STD. BC-318.01.
22. FLAGPOLES SHALL BE LOCATED AS SHOWN ON SHEET 2. HOWEVER, SMALL FIELD ADJUSTMENTS OF POLE FOUNDATIONS MAY BE REQUIRED BY THE ENGINEER TO AVOID EXISTING UTILITIES ENCOUNTERED DURING EXCAVATION FOR THE POLE FOUNDATION. FOR FOUNDATION AND POLE DETAILS SEE SHEET NO. 8.
23. ALL UTILITY CONSTRUCTION AND RELOCATION SHALL BE PERFORMED IN ACCORDANCE WITH APPROPRIATE ARTICLES OF THE CITY OF BALTIMORE, DEPARTMENT OF PUBLIC WORKS "SPECIFICATIONS FOR MATERIAL, HIGHWAYS, BRIDGES, UTILITIES AND INCIDENTAL STRUCTURES" DATED 1979 AND THE LATEST AMENDMENT THEREOF.
24. REMOVE EXISTING 2" INCH WATER METER, FRAME AND COVER OF ABANDONED WATER SERVICE AND TURN OVER TO CITY DPW.
25. ELECTRICAL SERVICE TERMINATION TO LIGHTED DIRECTORY TO BE DETERMINED IN THE FIELD.
26. ALL ELECTRICAL CONDUITS SHALL BE PLACED A MINIMUM OF 2'-0" BELOW FINISHED OR PAVING.
27. 3/8" AND 1/2" GROUND IN 1" PVC CONDUIT THROUGHOUT EXCEPT AS OTHERWISE NOTED.



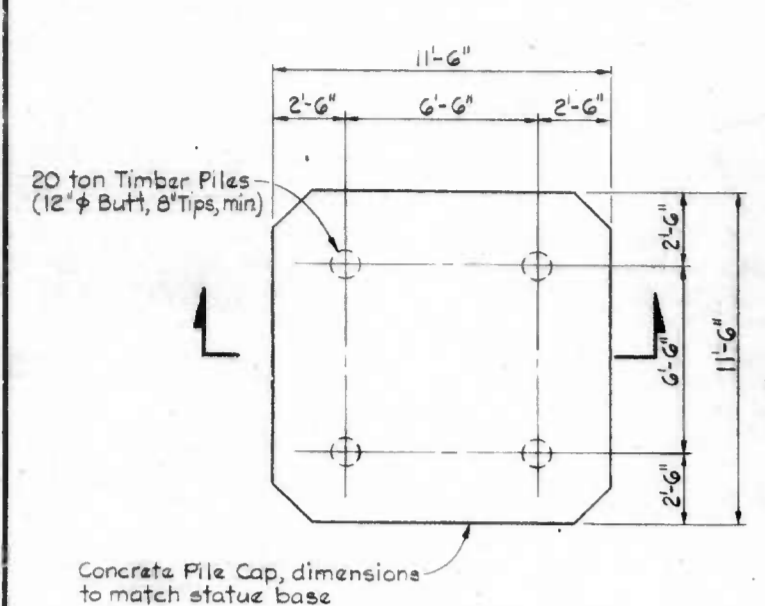
PRELIMINARY DRAWING
FOR INFORMATION ONLY
DO NOT USE FOR
CONSTRUCTION
DATE SEP 21 1982

CITY OF BALTIMORE
DEPARTMENT OF PUBLIC WORKS
BUREAU OF HIGHWAYS
CONTRACT NO.

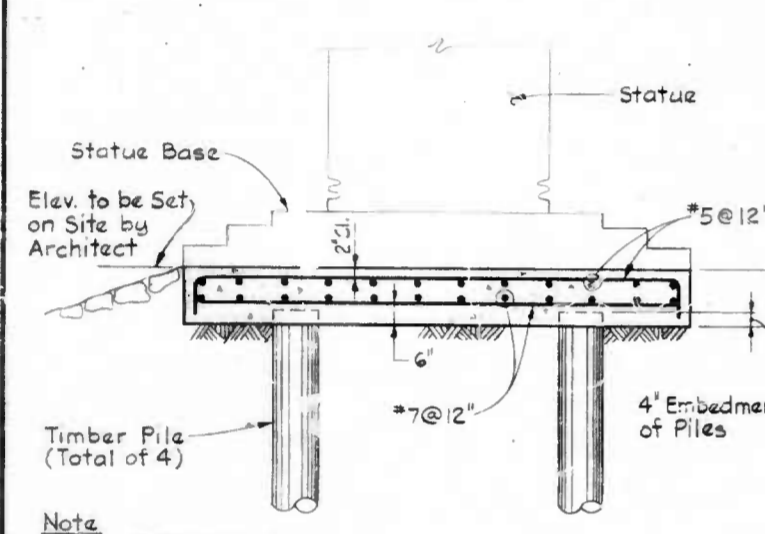
PLAN OF UTILITIES

WHITMAN, REQUARDT AND ASSOCIATES
ENGINEERS
BALTIMORE MARYLAND

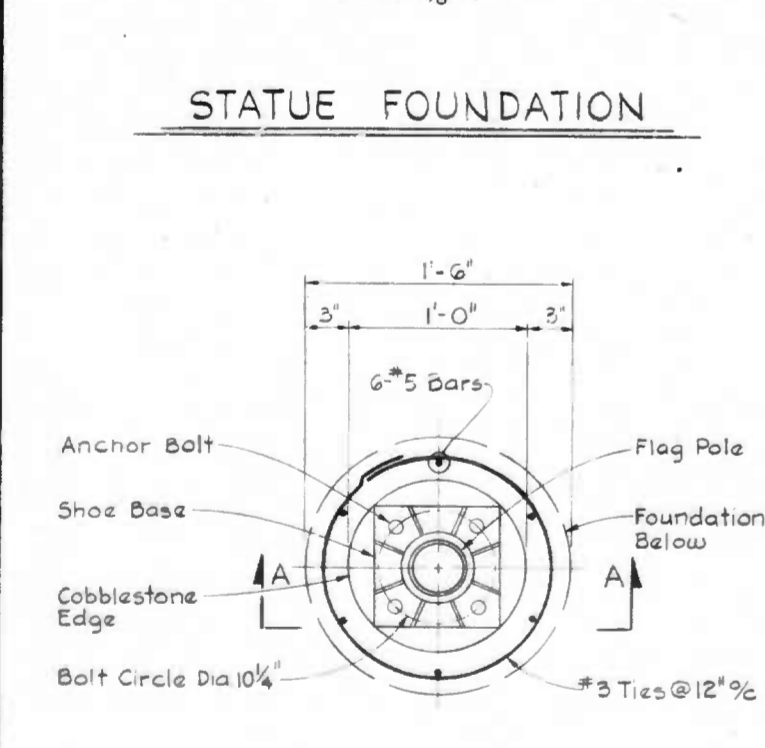
SCALE: AS SHOWN DATE: SHEET 7 OF 8



PLAN
Scale: 1/4"=1'-0"

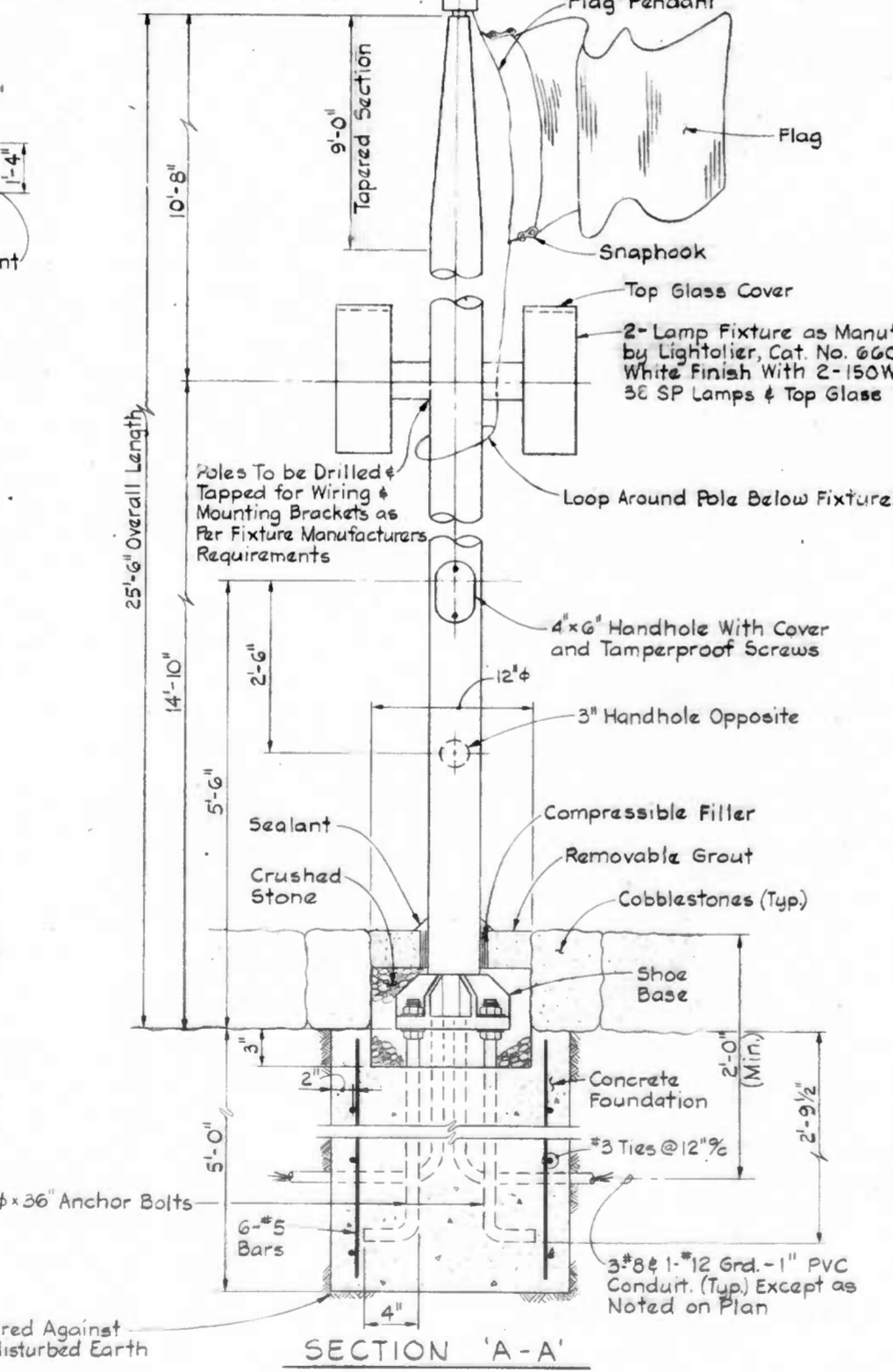


SECTION
Scale: 3/8"=1'-0"

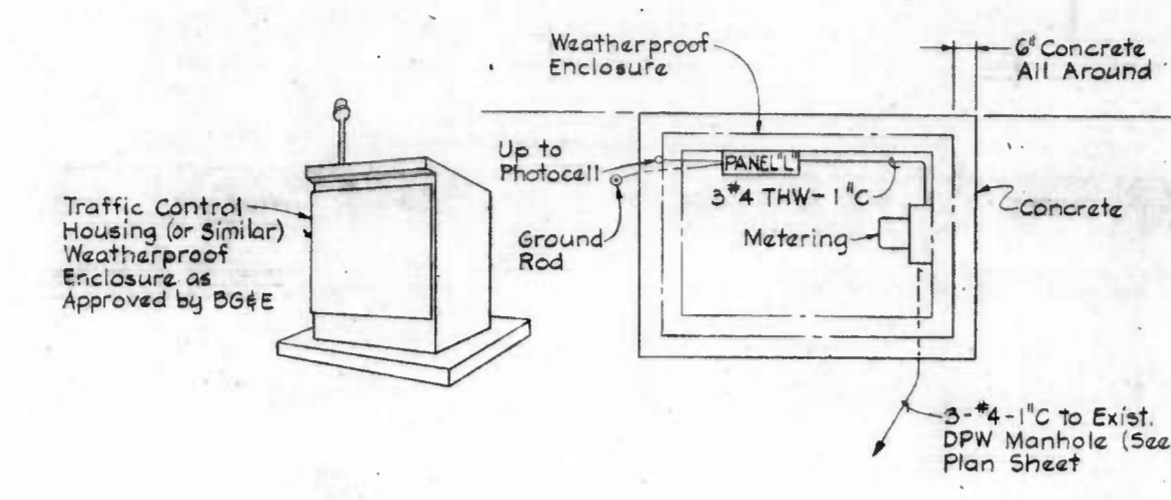


PLAN

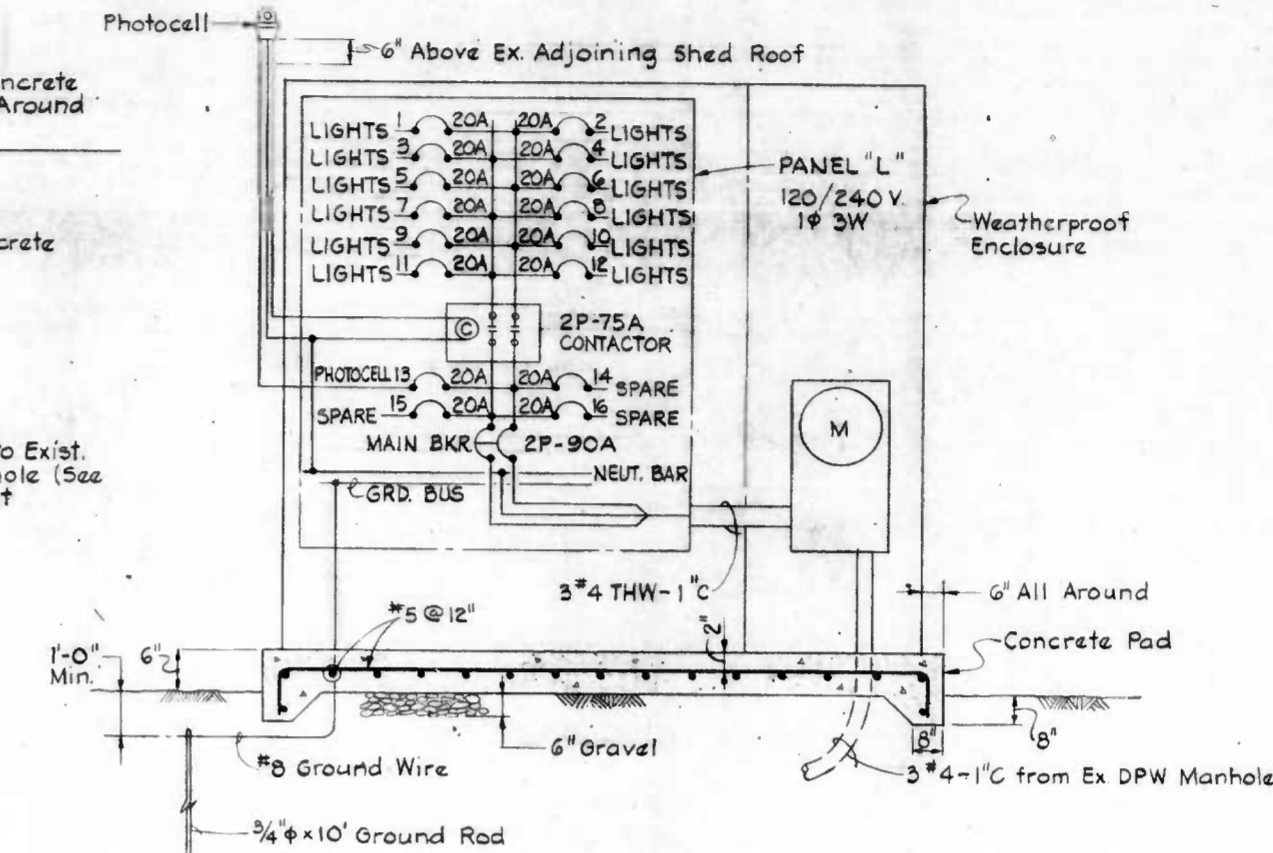
- Notes:
- All Timber Piles shall conform to Articles 34.05 of the Baltimore City Standard Specifications.
 - All Timber Piles shall be treated with creosote oil as stated in Article 20.23 of the Standard Specifications.
 - All Piles shall have a capacity 20 ton piles and shall be driven to the necessary resistance as specified in Article 34.05 of the Standard Specifications.
 - All Concrete shall conform to Article 20.07 of the Standard Specifications.
 - Mix No. 3 for Structures and Substructures as shown in Table 20.07-5 of the Standard Specifications shall be used for all concrete unless otherwise noted.
 - Reinforcement shall be ASTM A615, Grade 60 as specified in the Standard Specifications.
 - Locate and expose existing utilities before driving piles.
 - For bidding purposes piles shall be assumed to be - 30' long.



SECTION 'A-A'
LIGHTED FLAGPOLE
No Scale

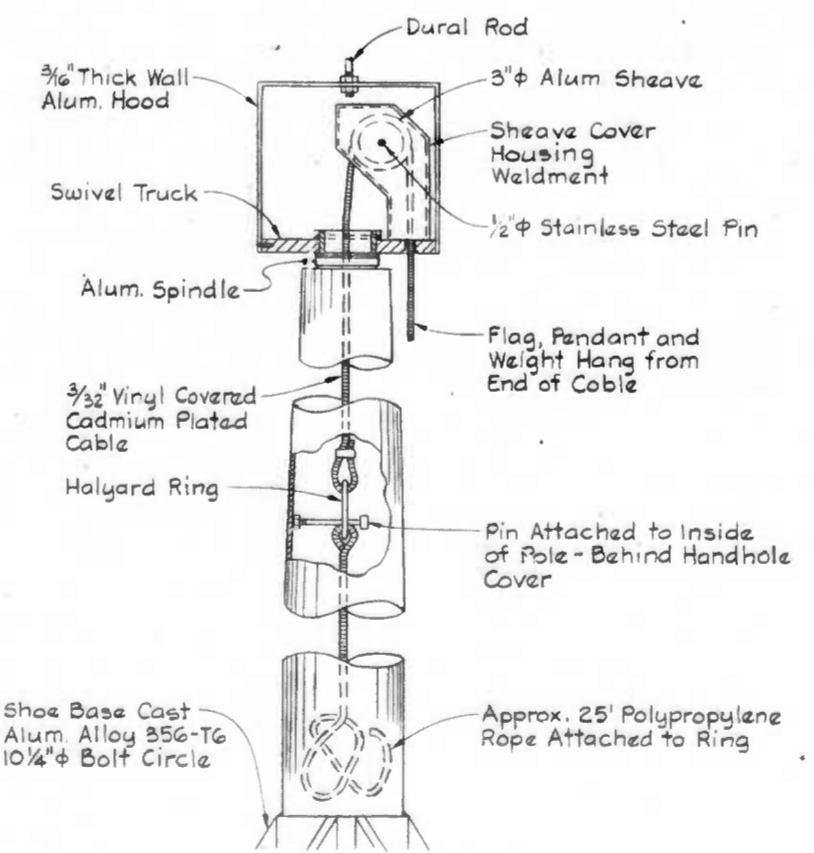


PLAN



ONE LINE DIAGRAM

METERING AND DISTRIBUTION CENTER
No Scale



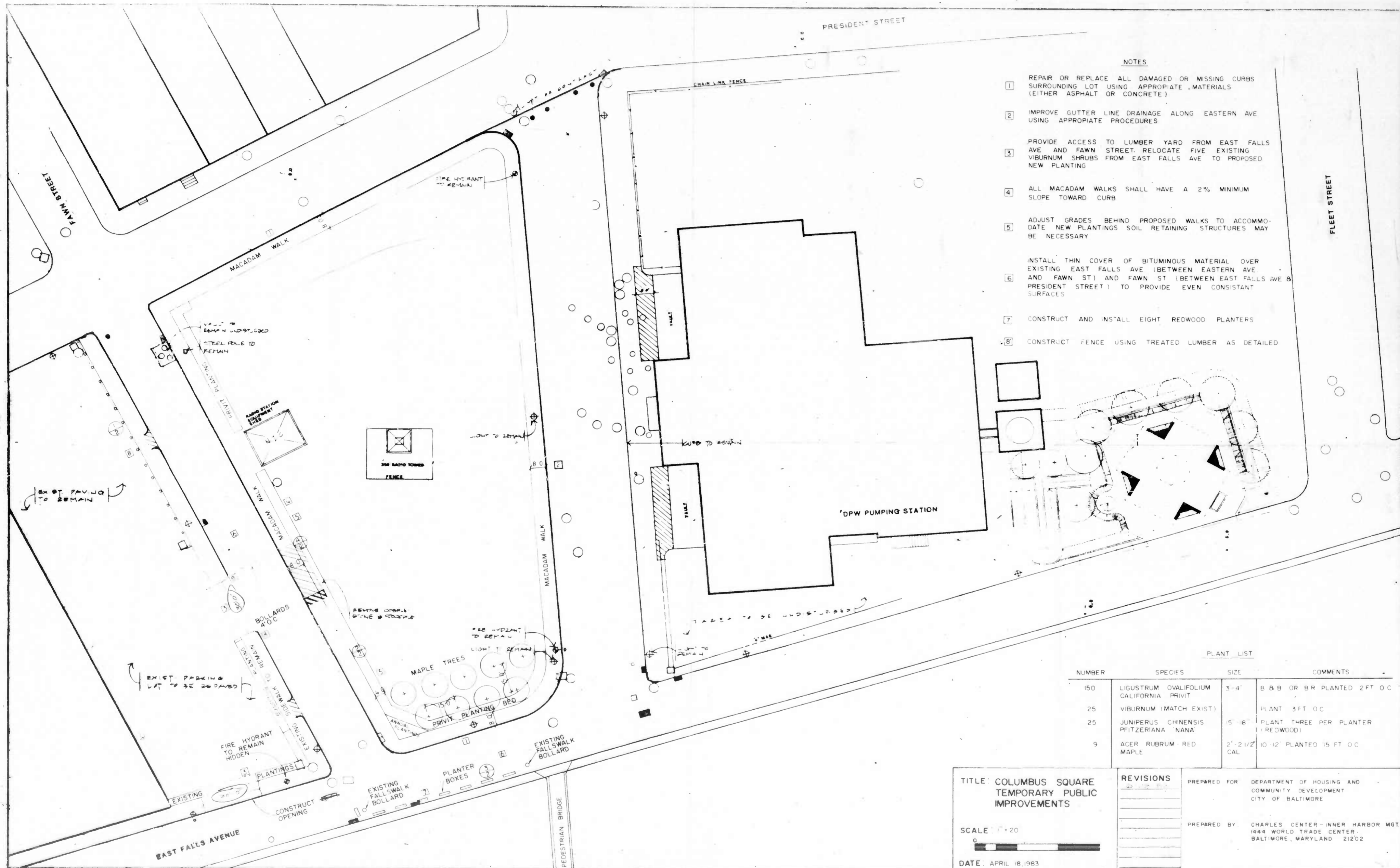
GENERAL DESIGN DETAIL

- LIGHTED FLAGPOLE SPECIFICATIONS**
- FLAGPOLES SHALL MATCH THOSE USED AT THE NATIONAL AQUARIUM IN BALTIMORE.
- POLE: MADE OF 6063-T6 ALUM. ALLOY SEAMLESS TUBING-CONTROL TAPER TYPE POLE WITH (25'-6") OVERALL LENGTH, (5") BUTT DIA., (3 1/2") TOP DIA., (.188") WALL THK. - SHIPMENT TO BE IN (1) SECTION.
- INTERNAL HALYARD SYSTEM: SYSTEM TO INCLUDE SPECIALLY DESIGNED ALUM. REVOLVING TRUCK, ACCESS HANDHOLE W/ TAMPERPROOF SCREWS, 3/32" VINYL COVERED, CADMIUM PLATED CABLE WITH BRONZE CHROME PLATED SNAPHOOKS, BRAIDED NYLON RETAINING LOOP (TO CIRCLE POLE BELOW FIXTURES AS SHOWN ON DETAIL). MANUAL SYSTEM ALSO INCLUDES HALYARD RING, RETAINING PIN THAT SCREWS INTO NUT WELDED TO INSIDE OF SHAFT AND POLYPROPYLENE ROPE (SEE DETAIL).
- BALL: (5") DIA. - 1/4" GAGE ALUM. BALL W/ CLEAR ANODIZED FINISH MOUNTED ON A 5/8" DIA. SEAMLESS ALUM. TUBE SLIPPED OVER A 1/2" DIA. DURAL ROD THAT SCREWS INTO TOP OF HOOD.
- FINISH: AFTER FABRICATION, POLE AND CORRESPONDING ACCESSORIES TO RECEIVE A MACHINED SATIN BRUSH FINISH, A ZINC CHROMATE PRIMER, & THEN THREE (3) COATS OF HIGH GLOSS ENAMEL (COLOR AS SELECTED).
- FLAGS: 11' x 6' NYLON OUTDOOR HEAVY DUTY FS CCC-C-476, TYPE 1b.

PRELIMINARY DRAWING
FOR INFORMATION ONLY
DO NOT USE FOR
CONSTRUCTION
DATE SEP 21 1982 SEP 21 1982

WHITMAN, REQUARDT AND ASSOCIATES
ENGINEERS
BALTIMORE MARYLAND

CITY OF BALTIMORE
DEPARTMENT OF PUBLIC WORKS
BUREAU OF HIGHWAYS
CONTRACT NO.
STRUCTURAL AND ELECTRICAL DETAILS
SCALE AS SHOWN DATE
SHEET 8 OF 8



- NOTES**
1. REPAIR OR REPLACE ALL DAMAGED OR MISSING CURBS SURROUNDING LOT USING APPROPRIATE MATERIALS (EITHER ASPHALT OR CONCRETE)
 2. IMPROVE GUTTER LINE DRAINAGE ALONG EASTERN AVE USING APPROPRIATE PROCEDURES
 3. PROVIDE ACCESS TO LUMBER YARD FROM EAST FALLS AVE AND FAWN STREET. RELOCATE FIVE EXISTING VIBURNUM SHRUBS FROM EAST FALLS AVE TO PROPOSED NEW PLANTING
 4. ALL MACADAM WALKS SHALL HAVE A 2% MINIMUM SLOPE TOWARD CURB
 5. ADJUST GRADES BEHIND PROPOSED WALKS TO ACCOMMODATE NEW PLANTINGS. SOIL RETAINING STRUCTURES MAY BE NECESSARY
 6. INSTALL THIN COVER OF BITUMINOUS MATERIAL OVER EXISTING EAST FALLS AVE (BETWEEN EASTERN AVE AND FAWN ST) AND FAWN ST (BETWEEN EAST FALLS AVE & PRESIDENT STREET) TO PROVIDE EVEN CONSISTANT SURFACES
 7. CONSTRUCT AND INSTALL EIGHT REDWOOD PLANTERS
 8. CONSTRUCT FENCE USING TREATED LUMBER AS DETAILED

PLANT LIST

NUMBER	SPECIES	SIZE	COMMENTS
150	LIGUSTRUM OVALIFOLIUM CALIFORNIA PRIVET	3'-4'	8 B & B OR BR PLANTED 2 FT OC
25	VIBURNUM (MATCH EXIST)		PLANT 3 FT OC
25	JUNIPERUS CHINENSIS PEITZERIANA NANA	5'-8'	PLANT THREE PER PLANTER (REDWOOD)
9	ACER RUBRUM - RED MAPLE	2'-2 1/2' CAL	10' PLANTED 15 FT OC

TITLE COLUMBUS SQUARE TEMPORARY PUBLIC IMPROVEMENTS

SCALE 1" = 20'

DATE APRIL 18, 1983

REVISIONS

PREPARED FOR DEPARTMENT OF HOUSING AND COMMUNITY DEVELOPMENT CITY OF BALTIMORE

PREPARED BY CHARLES CENTER - INNER HARBOR MGT. 1444 WORLD TRADE CENTER BALTIMORE, MARYLAND 21202