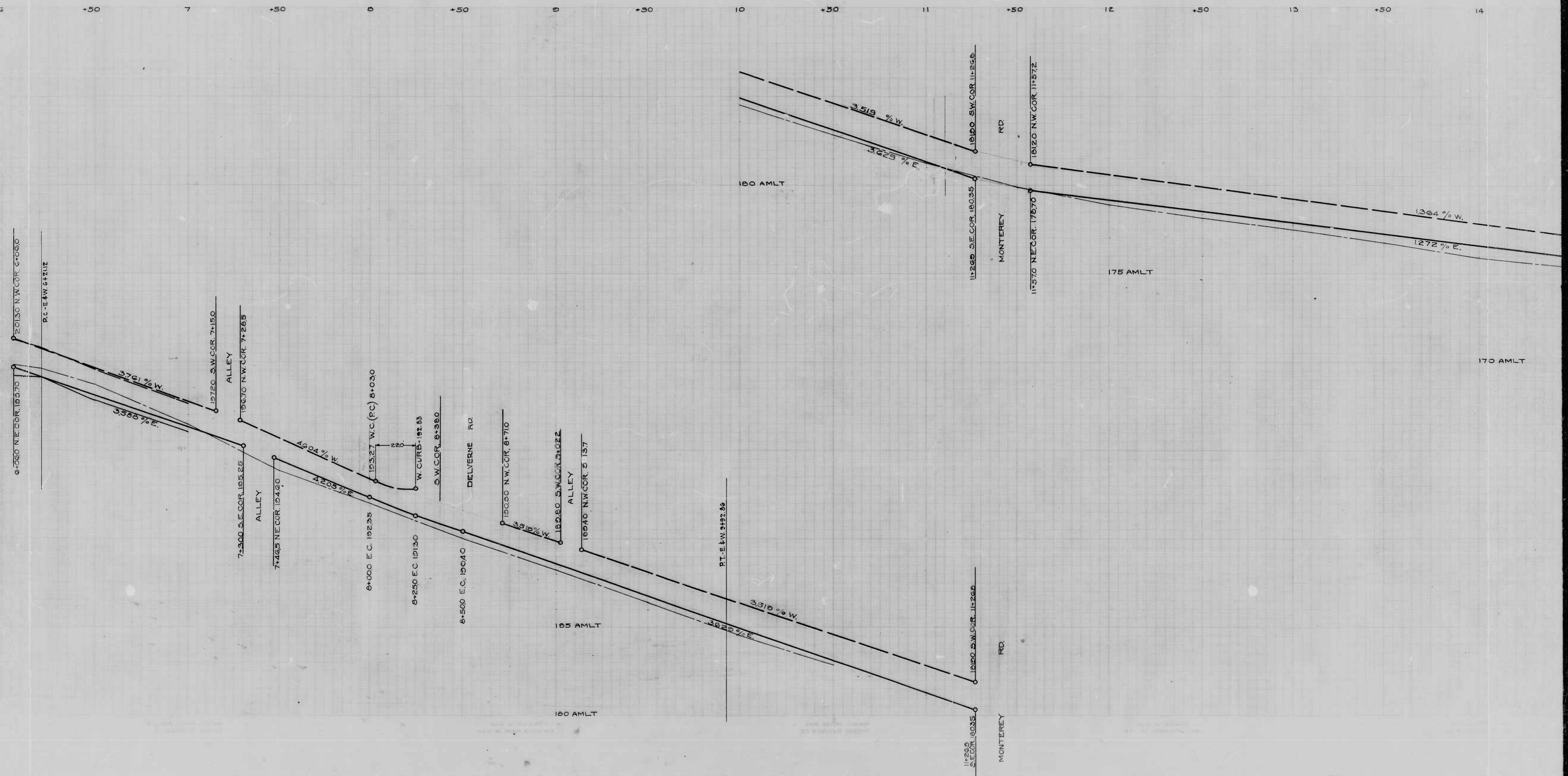
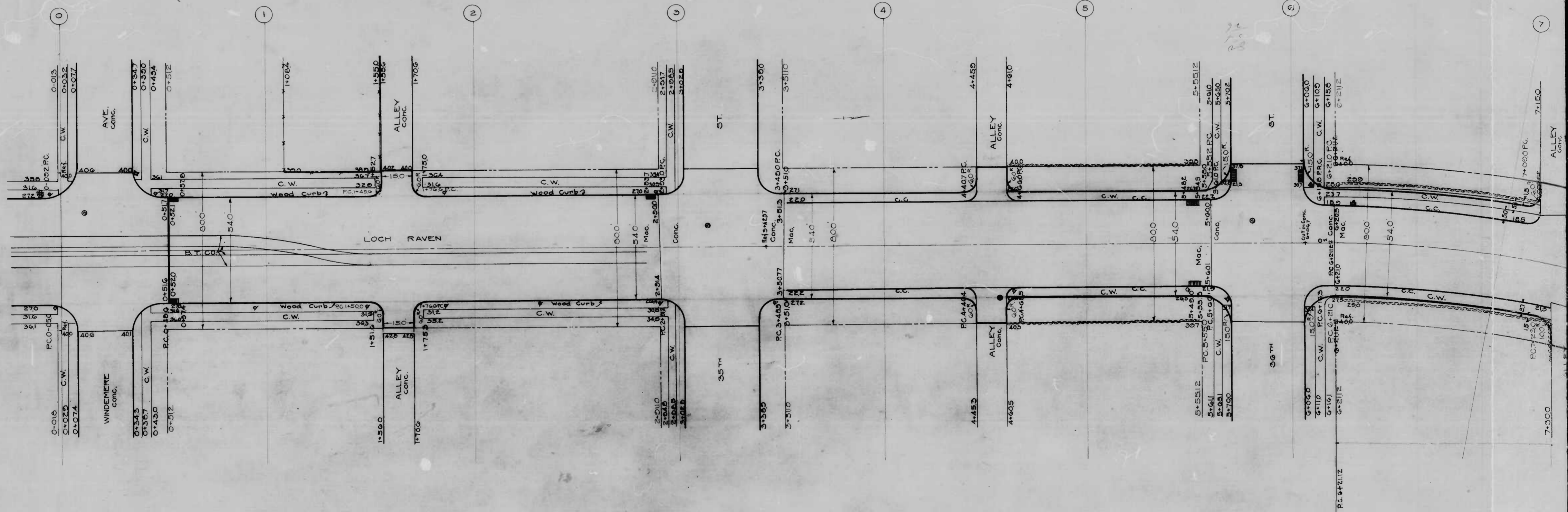


893

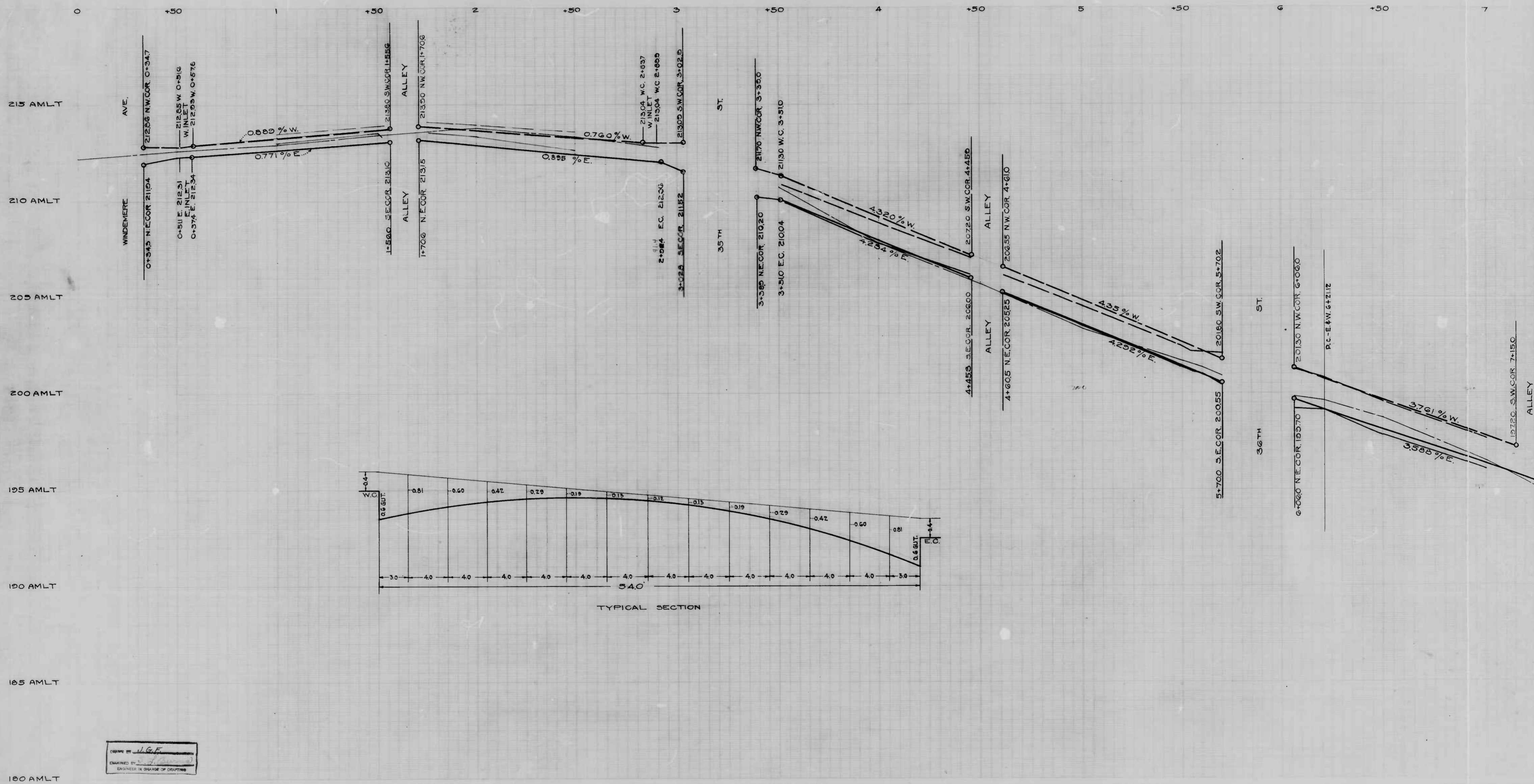
RATIO - 24

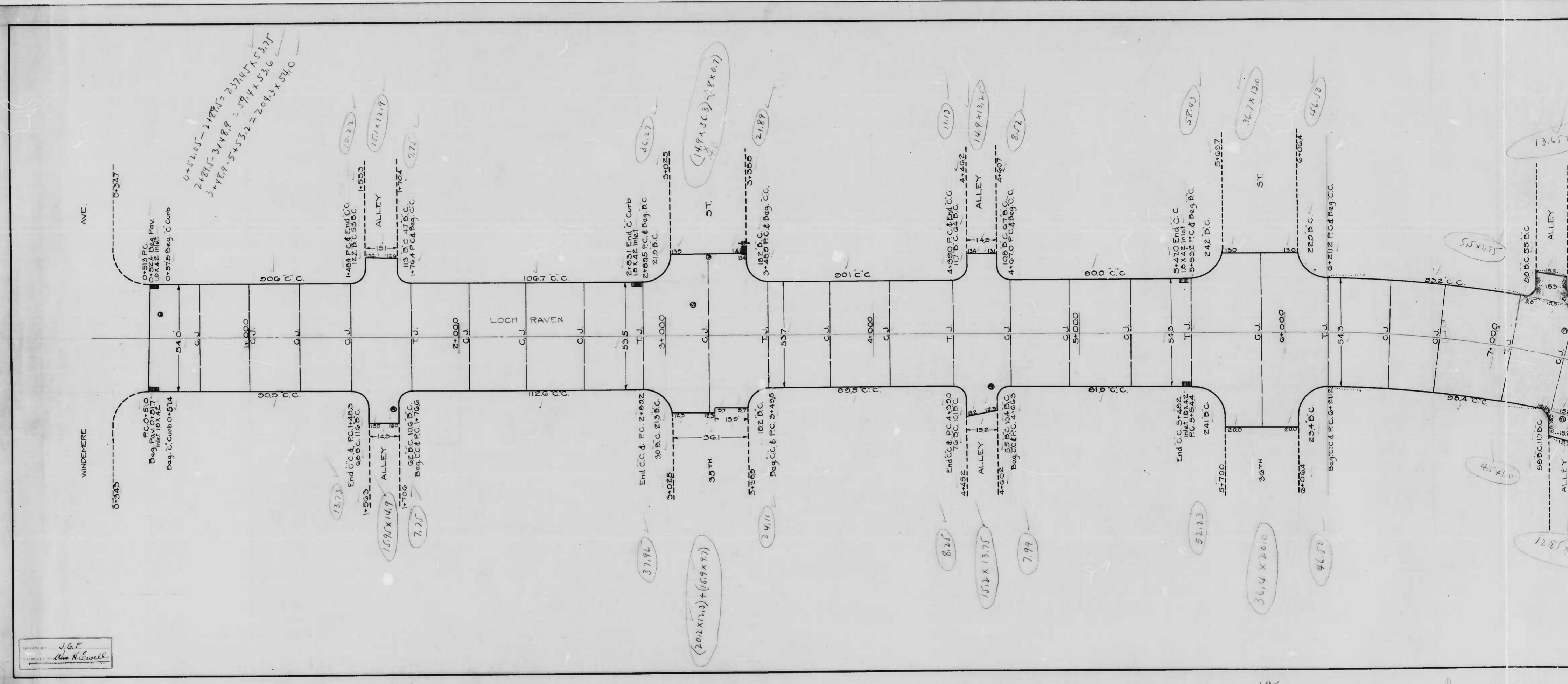
2





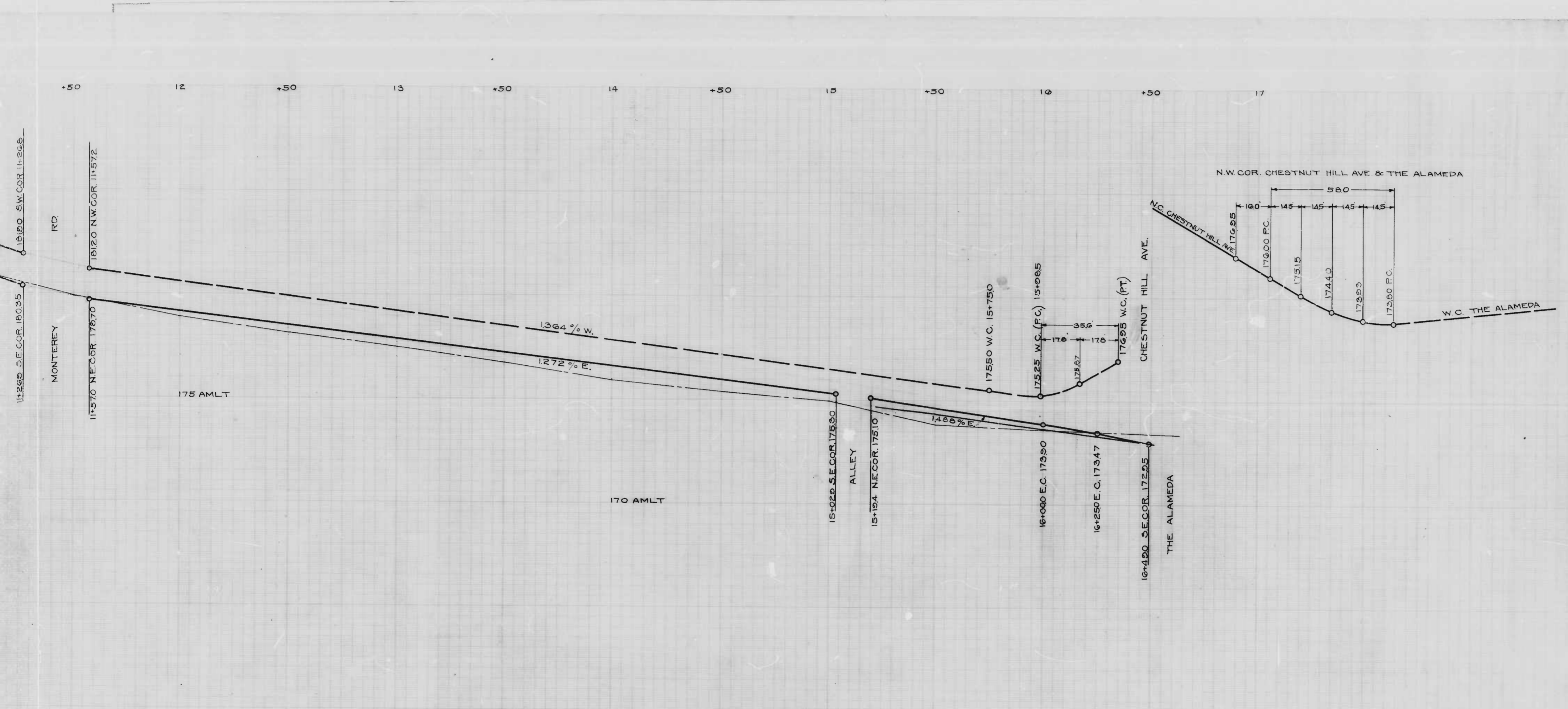
J.G.F. & J.H.H. Jr.
 S. L. Burns





J.G.F.
Alan H. Cowell

FROM WINDERMERE AVE. TO WINDERMERE AVE.
 PLAN NO. 893



CITY OF BALTIMORE
 DEPARTMENT OF PUBLIC WORKS
 BUREAU OF HIGHWAYS
 PROFILE OF
 LOCH RAVEN RD - WNDEMERE AVE - THE ALAMEDA
 CONT. N^o 893
 SCALE VER. 1" = 20'
 HOR. 1" = 200'

APPROVED: *Henry Weiskopf*
 ASSOCIATE ENGINEER

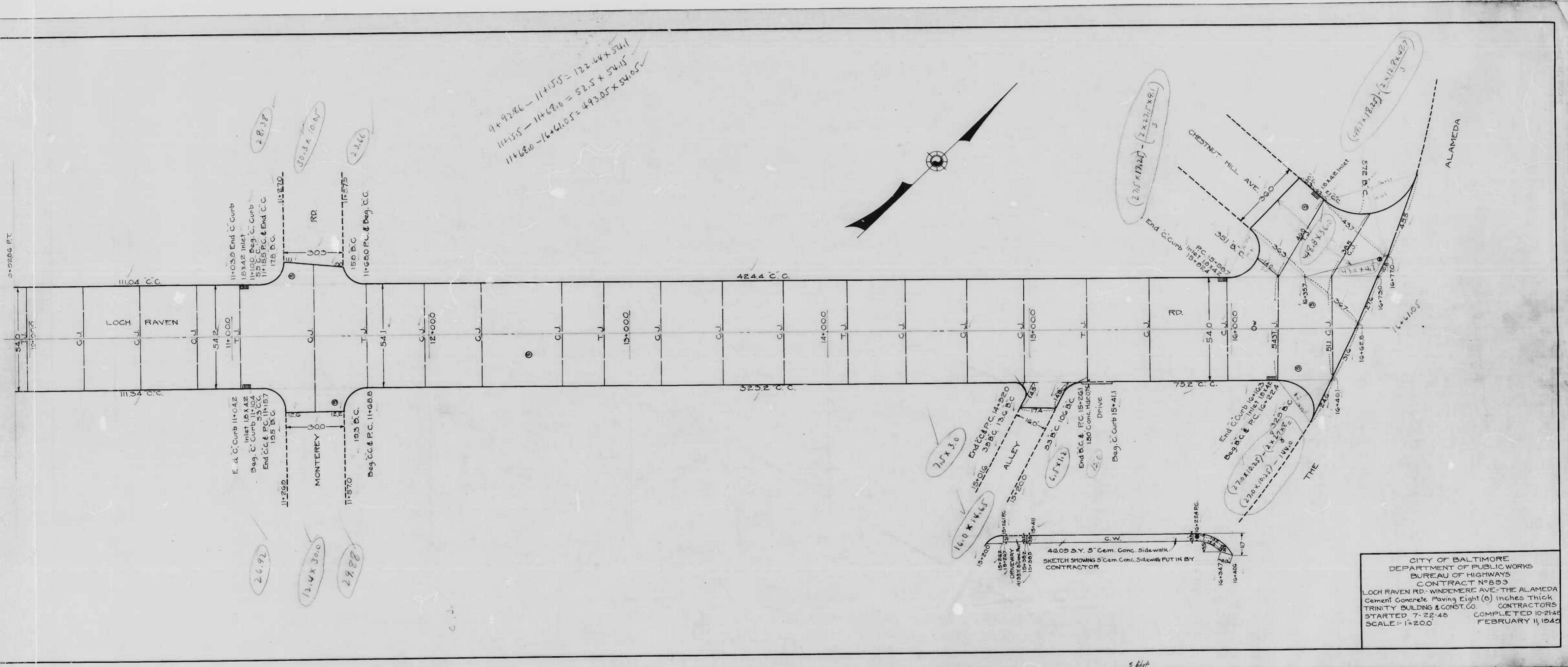
APPROVED: *James A. ...*
 HIGHWAY ENGINEER

APPROVED: *Edward ...*
 ENGINEER OF SURVEYS

APPROVED: *P. L. ...*
 DIRECTOR OF PUBLIC WORKS

BOOK N^o X-187
 APRIL 9, 1948

3'-0" = 1286 FT.



CITY OF BALTIMORE
 DEPARTMENT OF PUBLIC WORKS
 BUREAU OF HIGHWAYS
 CONTRACT NO. 893
 LOCH RAVEN RD. - WINDEMERE AVE. - THE ALAMEDA
 Cement Concrete Paving Eight (8) inches Thick
 TRINITY BUILDING & CONST. CO. CONTRACTORS
 STARTED 7-22-48 COMPLETED 10-21-48
 SCALE 1" = 200' FEBRUARY 11, 1949

5 sheets