

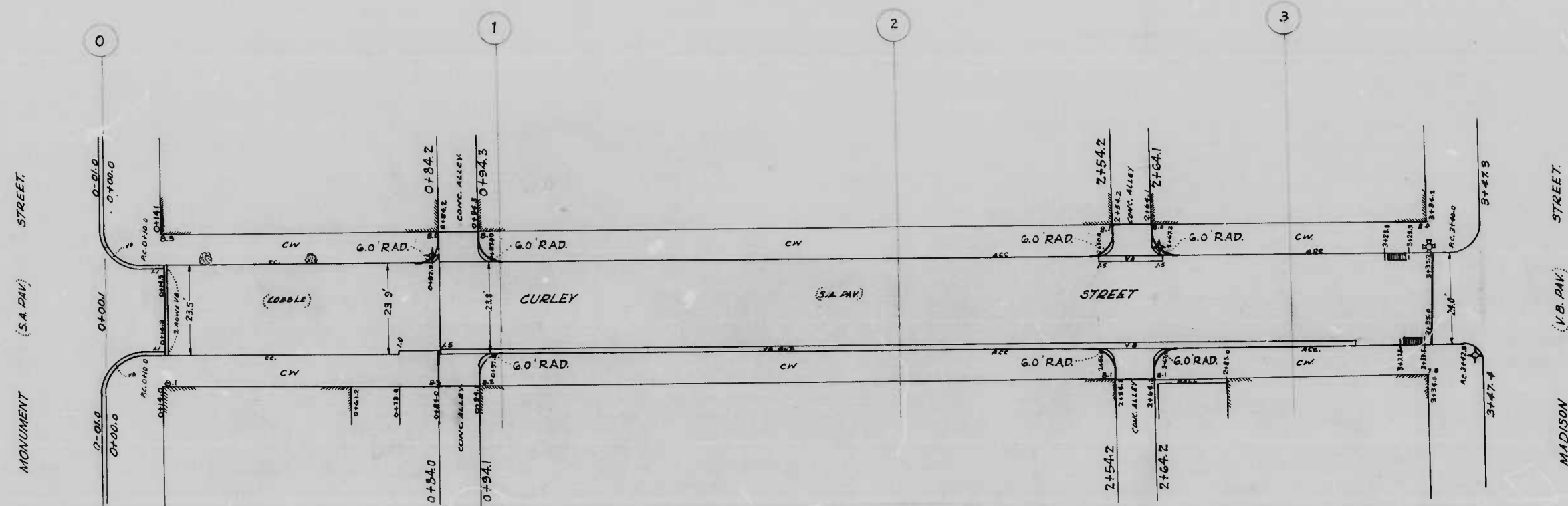
CITY OF BALTIMORE  
 DEPARTMENT OF PUBLIC WORKS  
 BUREAU OF HIGHWAYS  
 PROFILE OF  
 BARNES STREET- EDEN STREET TO CAROLINE STREET  
 H.C. 1" = 20.0' Book N° X235  
 V.C. 1" = 2.0' MAY 27, 1948  
 Cont. N° 883

APPROVED: *Henry Weisberg* ASSOCIATE ENGINEER  
 APPROVED: *John H. McKeen* HIGHWAYS ENGINEER  
 APPROVED: *Edward S. Maclean* ENGINEER OF SURVEYS  
 APPROVED: *Paul Holland* DIRECTOR OF PUBLIC WORKS

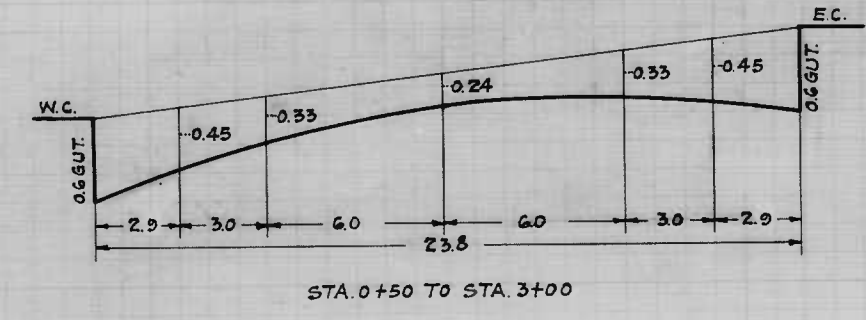
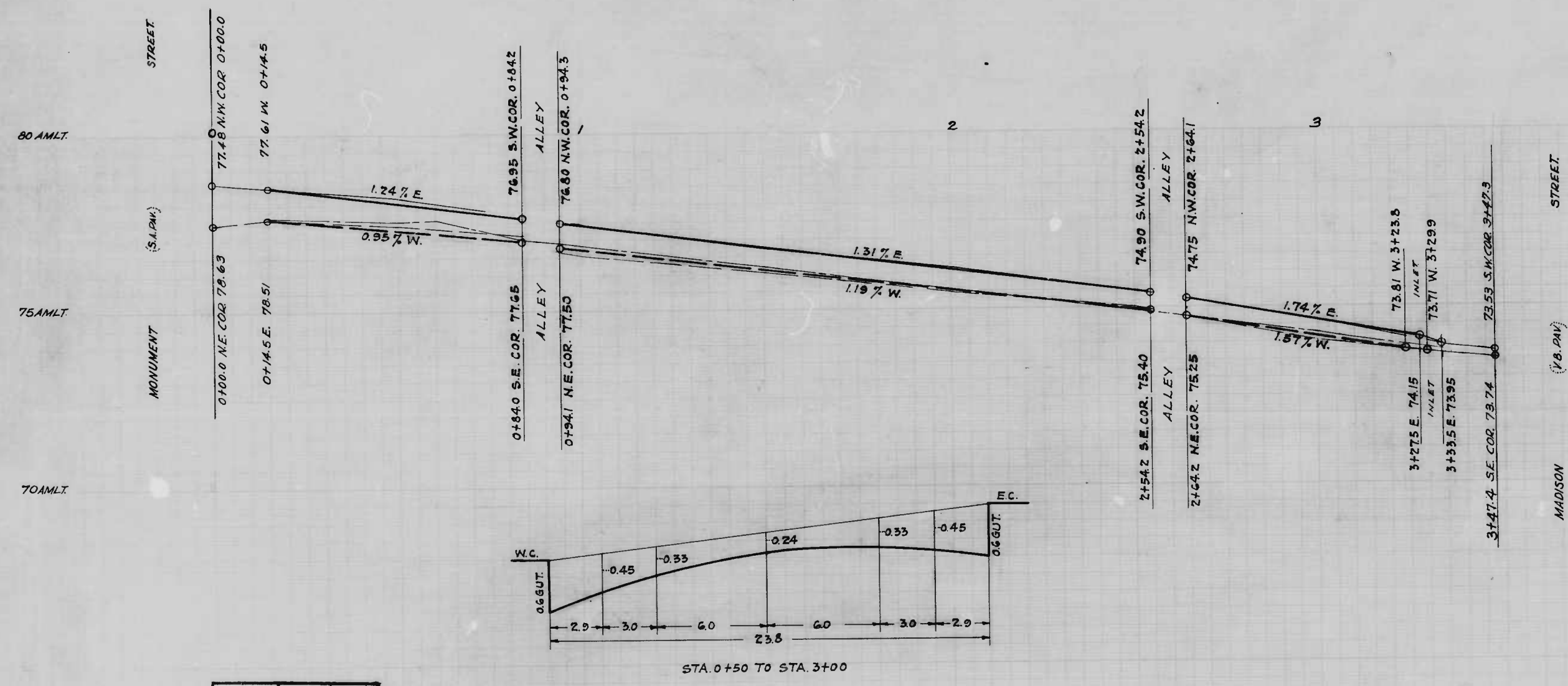
DRAWN BY *W. R. Butler*  
 EXAMINED BY *Wm. H. Conwell*







NOTE:  
 TO BE CEMENT CONCRETE PAVING SEVEN INCHES THICK  
 FOUR INCHES OF SOIL STABILIZATION MATERIALS AND  
 UNDERDRAINS WILL BE REQUIRED.



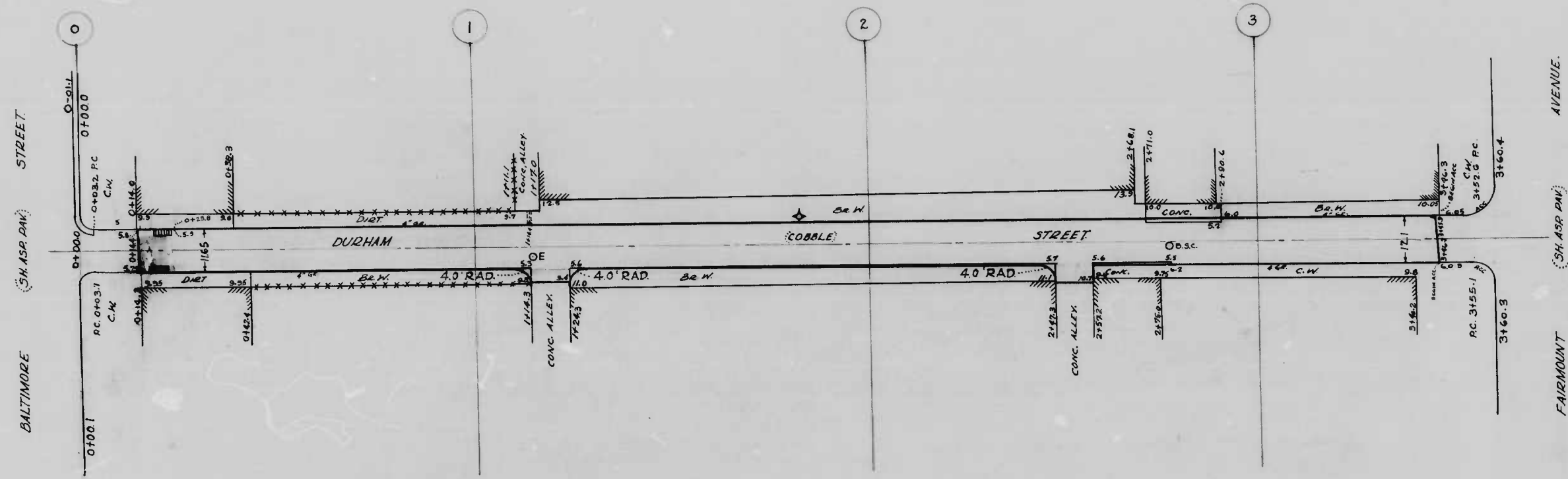
DRAWN BY *Wm. R. Boster*  
 EXAMINED BY *Wm. H. Conwell*  
 ENGINEER IN CHARGE OF GRADING.

CITY OF BALTIMORE  
 DEPARTMENT OF PUBLIC WORKS  
 BUREAU OF HIGHWAYS  
 PLAN & PROFILE  
 CURLEY STREET - MONUMENT STREET TO MADISON STREET.  
 PLAN: 1"=20.0' BOOK NO. X 234  
 SCALES: HOR: 1"=20.0' CONT. NO. 883  
 PROF: 1"=20' DATE: JUNE 4, 1948

APPROVED: *Henry Weisberg* ASSOCIATE ENGINEER  
 APPROVED: *James H. Dukey* HIGHWAYS ENGINEER  
 APPROVED: *Edward Meadler* ENGR. OF SURVEYS  
 APPROVED: *P. L. Hollands* DIRECTOR OF PUBLIC WORKS.

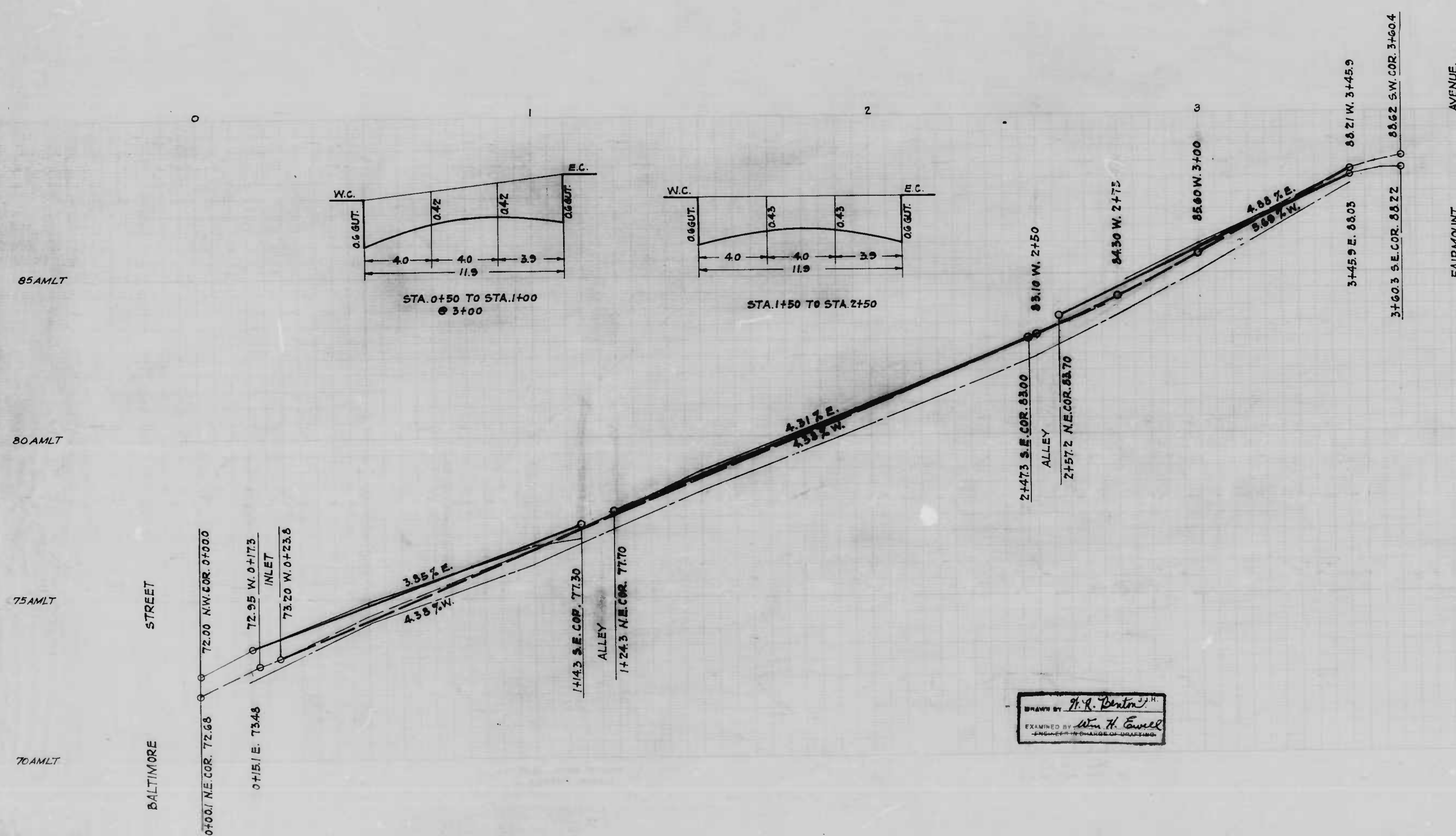






NOTE:  
THE ISSUANCE OF THIS PLAN & PROFILE DOES NOT COMMIT THE CITY TO THE ACCEPTANCE AND/OR IMPROVEMENT OF ANY THOROUGHFARES SHOWN HEREON.

NOTE:  
TO BE CEMENT CONCRETE PAVING 1" IN DEPTH. SOIL STABILIZATION MATERIAL OR UNDERDRAINS ARE NOT REQUIRED.

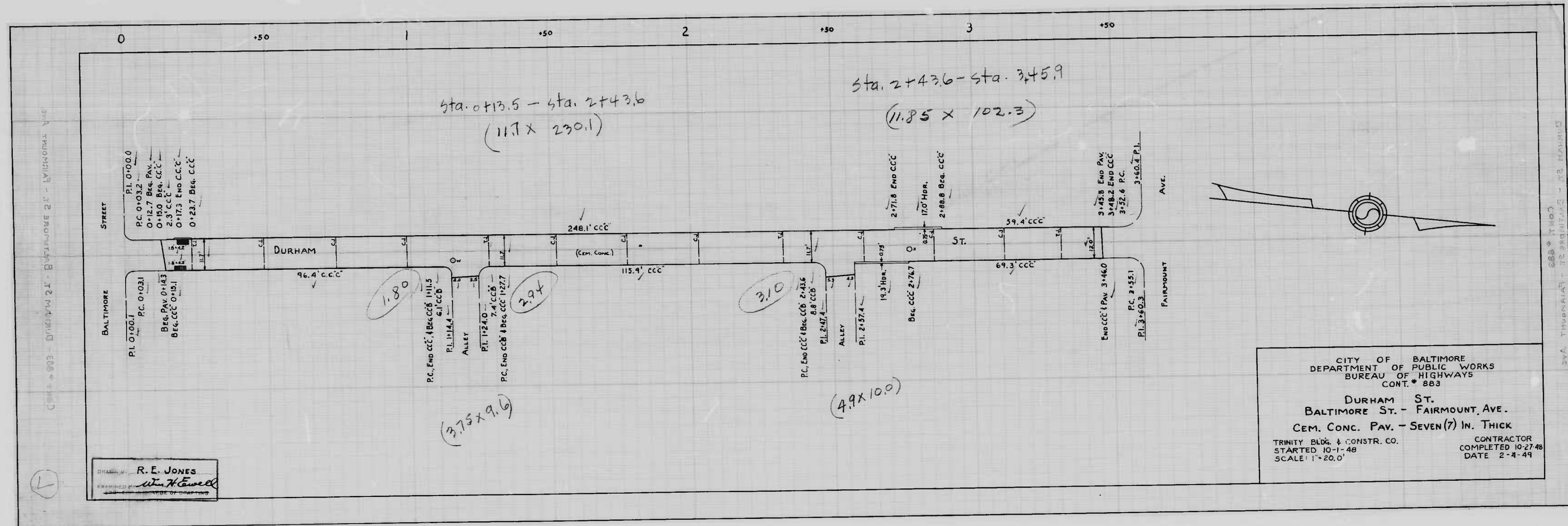


CITY OF BALTIMORE  
DEPARTMENT OF PUBLIC WORKS  
BUREAU OF HIGHWAYS  
PLAN & PROFILE  
DURHAM ST. - BALTIMORE ST. TO FAIRMOUNT AVE.  
PLAN: 1" = 200'  
SCALES: HOR: 1" = 200'  
PROF: VER: 1" = 20'  
BOOK NO. X-221  
CONT. NO. 883  
DATE: JUNE 3, 1948

APPROVED: *Edward W. ...* ASSOCIATE ENGINEER  
APPROVED: *J. ...* HIGHWAYS ENGINEER  
APPROVED: *Edward W. ...* ENGR. OF SURVEYS.  
APPROVED: *P. L. Hollands* DIRECTOR OF PUB. WORKS.

DESIGNED BY *H. K. ...*  
DRAWN BY *H. K. ...*





CITY OF BALTIMORE  
 DEPARTMENT OF PUBLIC WORKS  
 BUREAU OF HIGHWAYS  
 CONT. # 883  
 DURHAM ST.  
 BALTIMORE ST. - FAIRMOUNT AVE.  
 CEM. CONC. PAV. - SEVEN (7) IN. THICK  
 TRINITY BLDG. & CONSTR. CO. CONTRACTOR  
 STARTED 10-1-48 COMPLETED 10-27-48  
 SCALE 1"=20.0' DATE 2-4-49

Drawn by R. E. JONES  
*W. H. Howell*

883

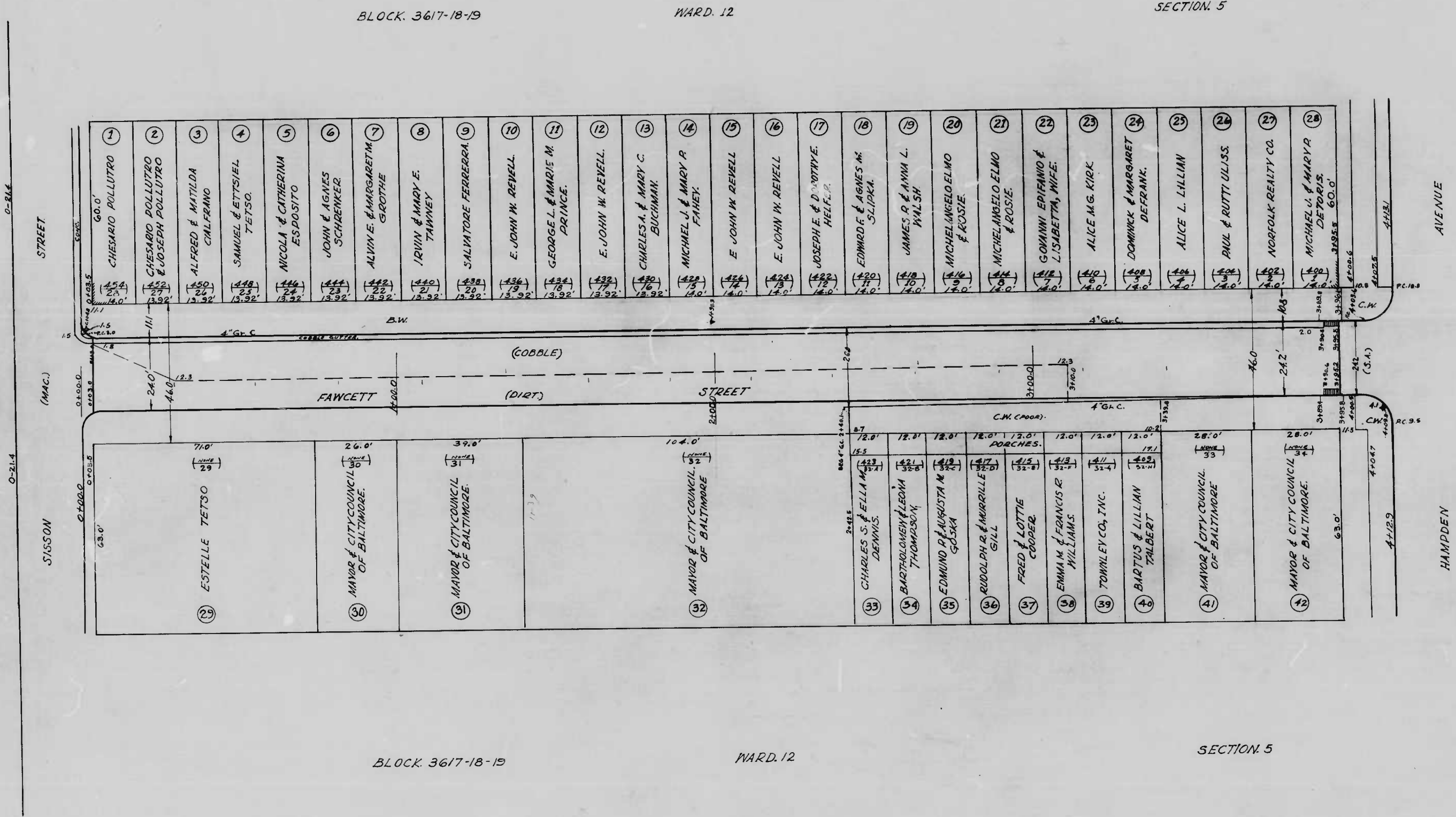
RATIO - 24

8

BLOCK 3617-18-19

WARD 12

SECTION 5



BLOCK 3617-18-19

WARD 12

SECTION 5

NOTE  
To Be Cem. Conc. Paving 7" in depth  
SOIL STABILIZATION MATERIALS  
AND/OR UNDERDRAINS ARE NOT  
REQUIRED.

(N) PLAT NO.  
(H) HOUSE OR DEVL. LOT NO.  
(A) APPEAL TAX COURT LOT NO.  
BLOCK: 3617-18-19  
WARD: 12  
SECTION: 5

FILED May 19 1948  
BUREAU OF HIGHWAYS  
FOR [Signature]

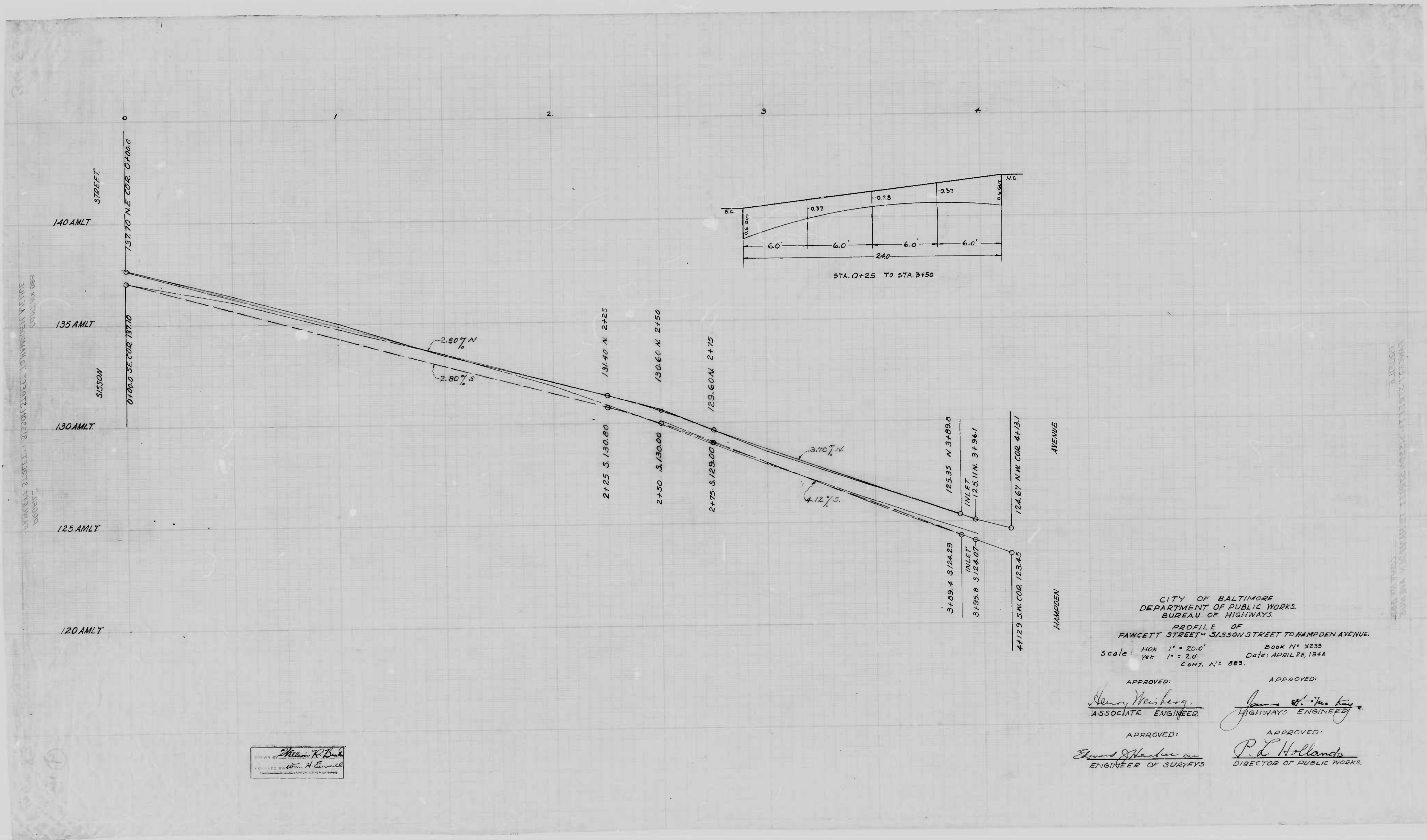
CITY OF BALTIMORE  
DEPARTMENT OF PUBLIC WORKS  
BUREAU OF HIGHWAYS  
ASSESSMENT PLAT NO. 603-A  
FAWCETT STREET - SISSON STREET TO HAMPDEN AVENUE.  
CONT. NO. 803

SCALE: 1"=20.0' BOOK NO. X235 APRIL 26, 1948

APPROVED: [Signature] ASSOCIATE ENGINEER  
APPROVED: [Signature] HIGHWAYS ENGINEER  
APPROVED: [Signature] ENGINEER OF SURVEYS  
APPROVED: [Signature] DIRECTOR OF PUBLIC WORKS

DRAWN BY [Signature]  
CHECKED BY [Signature]  
DATE: [Date]





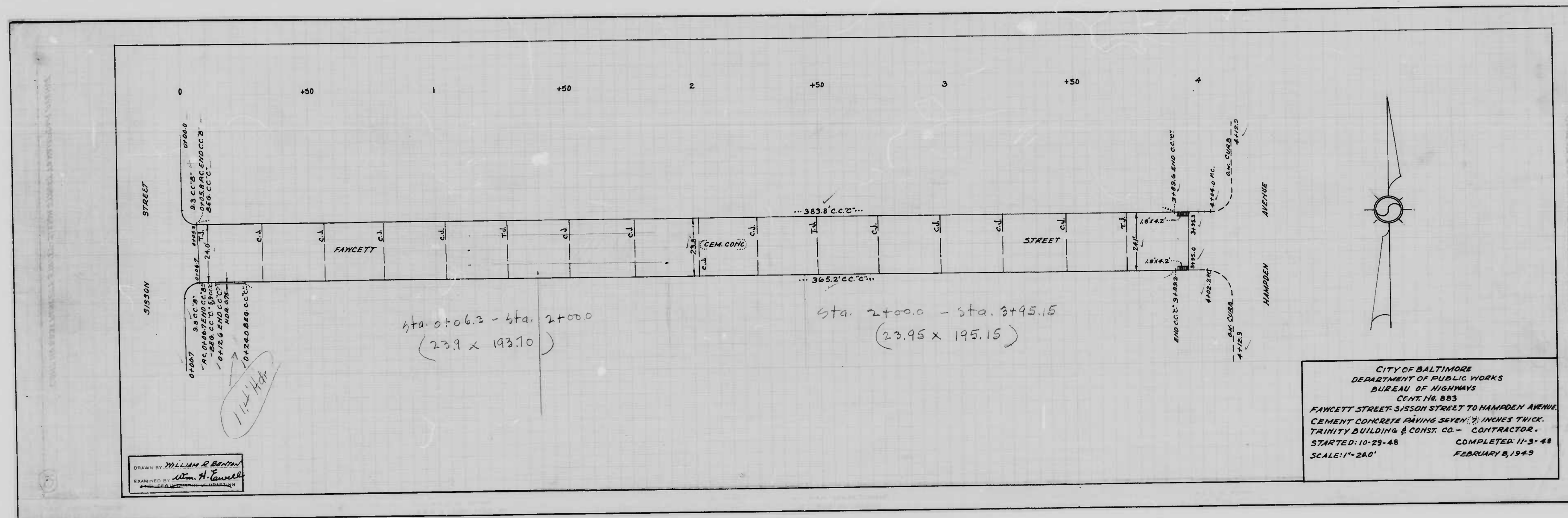
FAWCETT STREET - 24'00" WIDE - 10' SIDEWALK - 10' SIDEWALK - 10' SIDEWALK  
 1948

HAMPDEN AVENUE - 12' WIDE - 10' SIDEWALK - 10' SIDEWALK - 10' SIDEWALK  
 1948

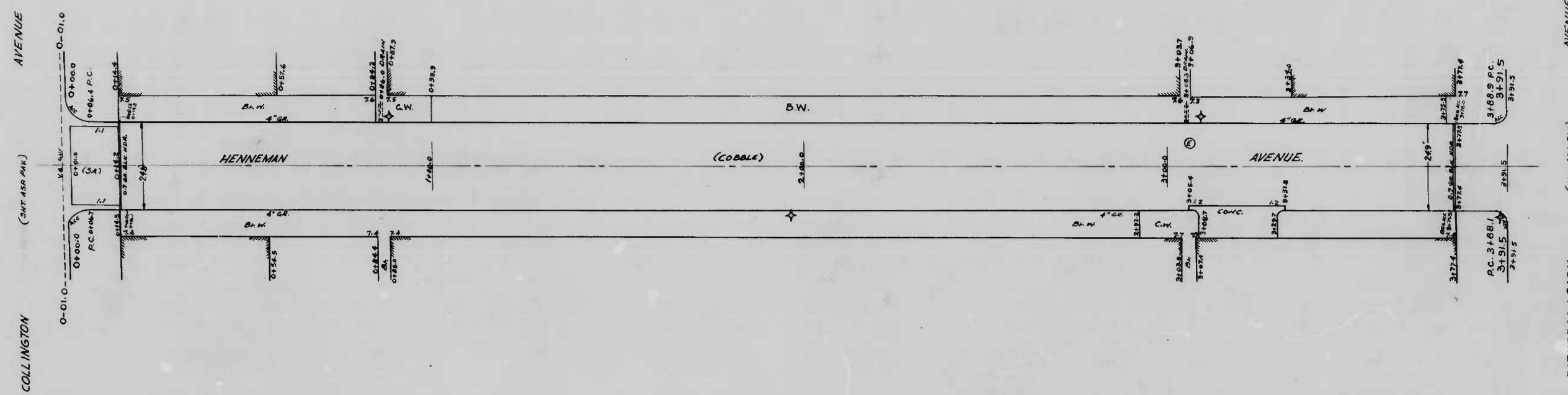
DRAWN BY: *Wm. H. Emmell*  
 CHECKED BY: *Wm. H. Emmell*

CITY OF BALTIMORE  
 DEPARTMENT OF PUBLIC WORKS  
 BUREAU OF HIGHWAYS  
 PROFILE OF  
 FAWCETT STREET - SISSON STREET TO HAMPDEN AVENUE.  
 HOR. 1" = 20.0'      BOOK N° X235  
 VERT. 1" = 2.0'      DATE: APRIL 28, 1948  
 CONT. N° 883.

APPROVED: *Henry M. Shoberg*      APPROVED: *James H. Mac Kay*  
 ASSOCIATE ENGINEER      HIGHWAYS ENGINEER  
 APPROVED: *Edward J. Hester*      APPROVED: *P. L. Hollands*  
 ENGINEER OF SURVEYS      DIRECTOR OF PUBLIC WORKS.

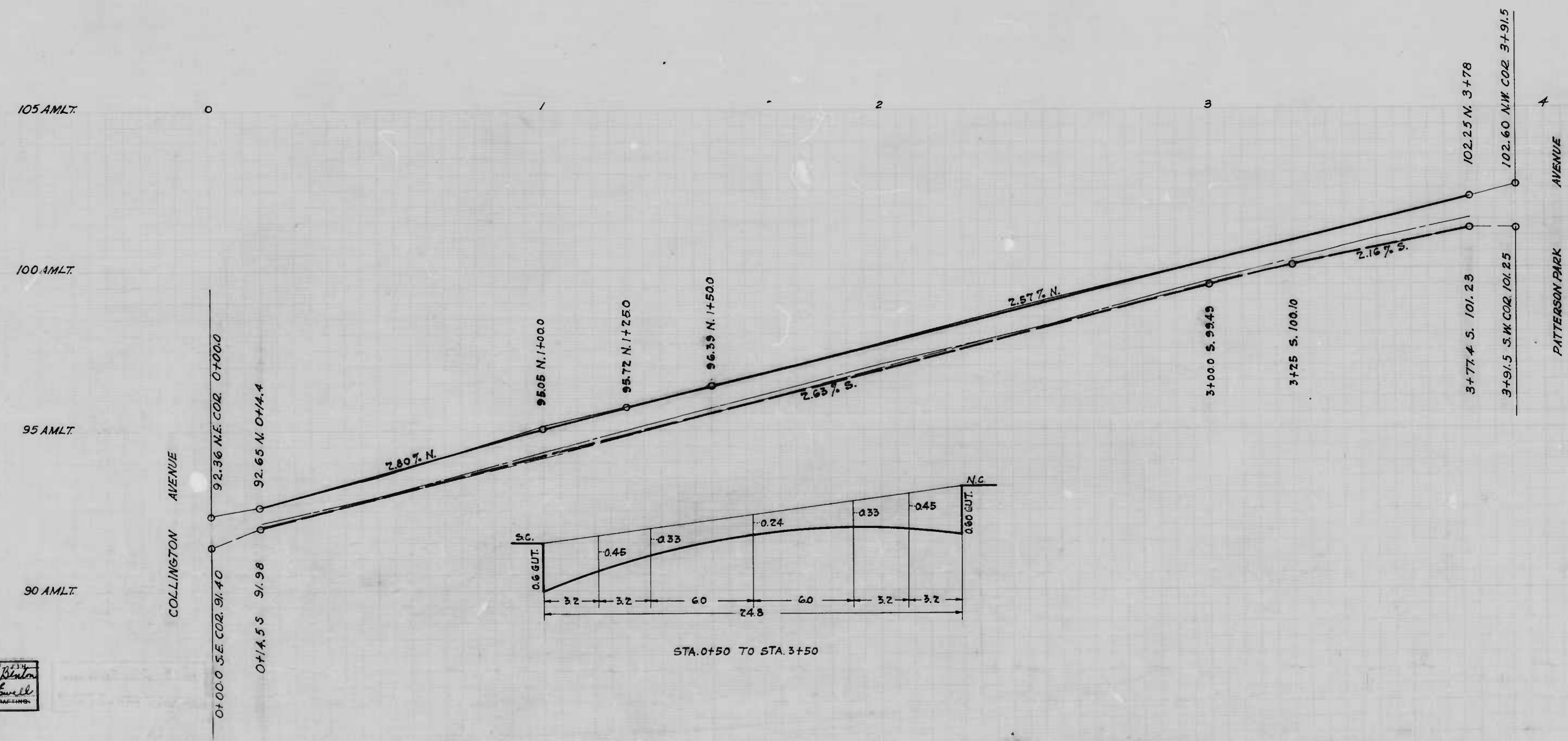






NOTE: THE ISSUANCE OF THIS PLAN & PROFILE DOES NOT COMMIT THE CITY TO THE ACCEPTANCE AND/OR IMPROVEMENT OF ANY THOROUGHFARES SHOWN HEREON.

NOTE: TO BE CEMENT CONCRETE PAVING 7" IN DEPTH. SOIL STABILIZATION MATERIAL OR UNDERDRAINS ARE NOT REQUIRED.



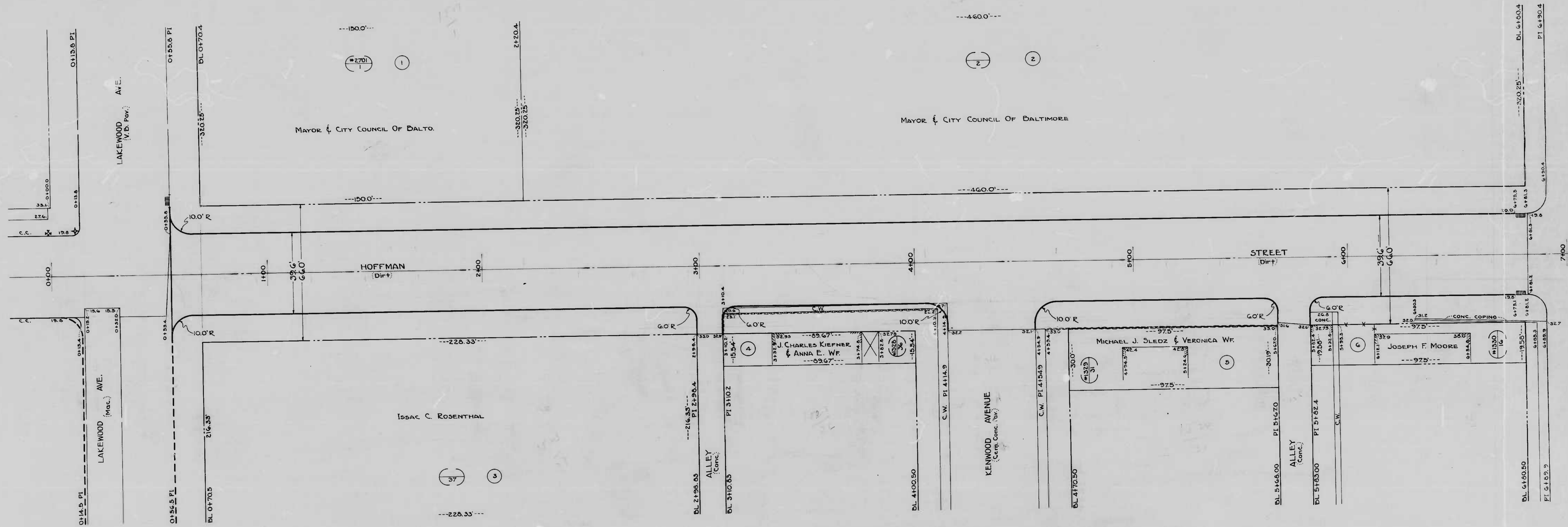
DRAWN BY: *Helen V. Brist*  
 CHECKED BY: *Wm. H. Conville*

CITY OF BALTIMORE  
 DEPARTMENT OF PUBLIC WORKS  
 BUREAU OF HIGHWAYS  
 PLAN & PROFILE  
 HENNEHAN AVENUE - COLLINGTON AVENUE TO PATTERSON PARK AVENUE.  
 PLAN: 1" = 200'  
 SCALES: HOR: 1" = 200'  
 PROF: VER: 1" = 2.0'  
 BOOK NO. X-234  
 CONT. NO. 383  
 DATE: JUNE 2, 1948

APPROVED: *Edmond Necker*  
 ASSOCIATE ENGINEER  
 APPROVED: *P. L. Hollands*  
 HIGHWAYS ENGINEER  
 APPROVED: *Edmond Necker*  
 ENG. OF SURVEYS.  
 APPROVED: *P. L. Hollands*  
 DIRECTOR OF PUB. WORKS

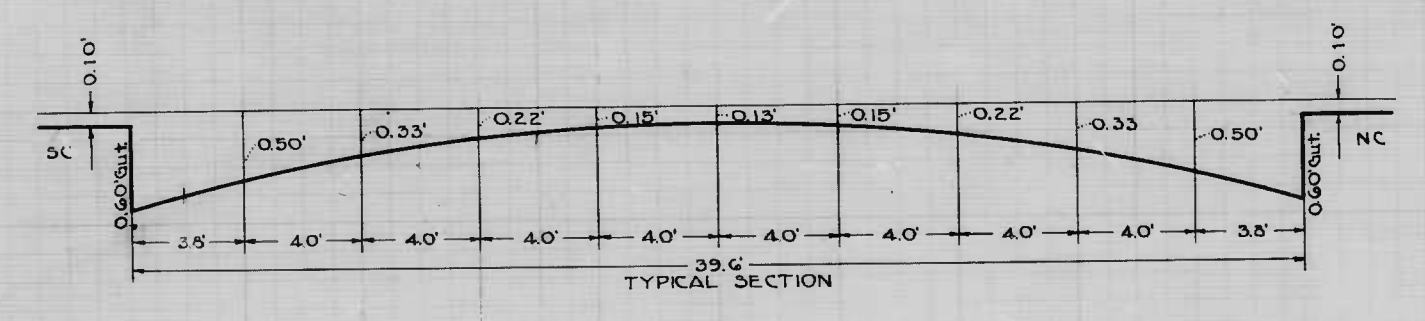
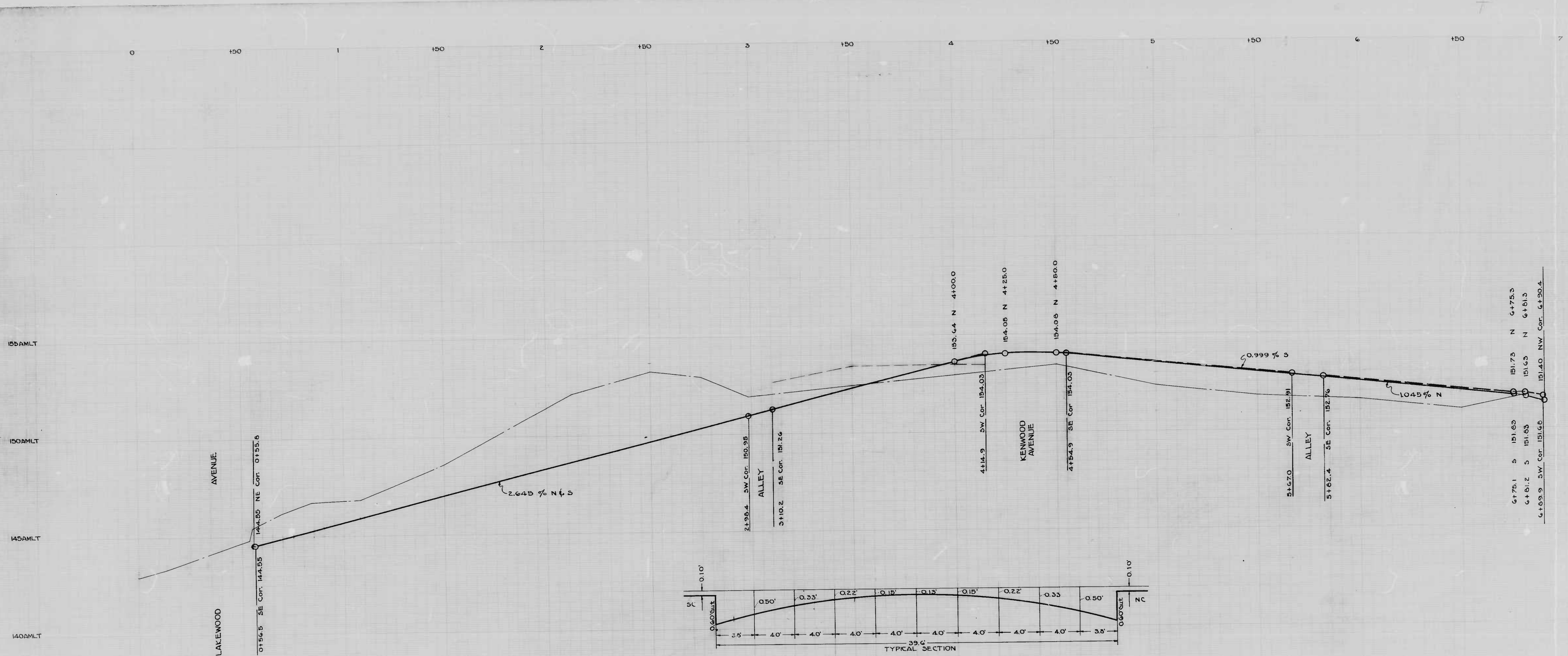






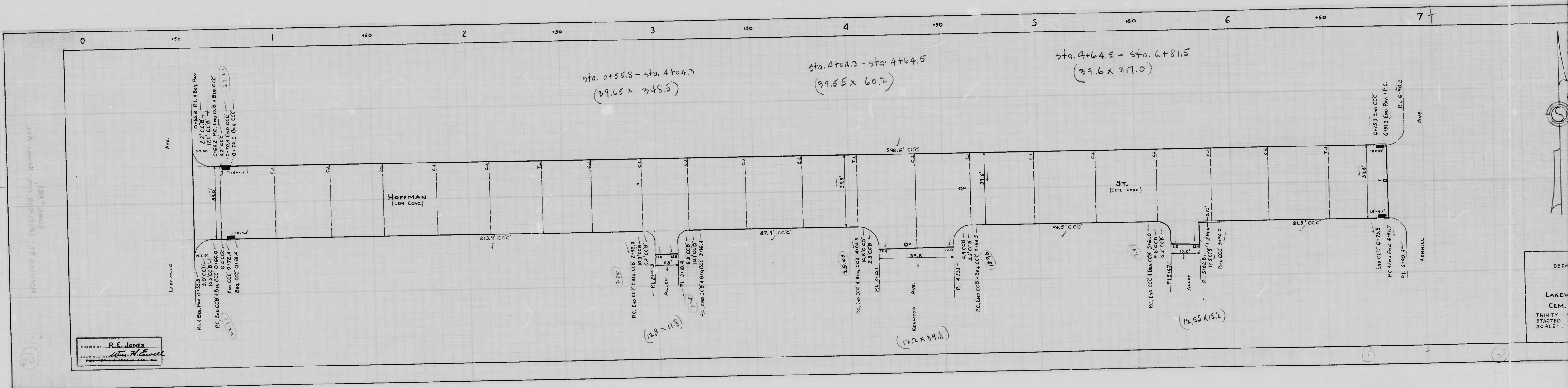
NOTE:-  
 TO BE CEMENT CONCRETE PAVING SEVEN (7) INCHES IN DEPTH.  
 SOIL STABILIZATION MATERIALS AND/OR UNDERDRAINS ARE NOT REQUIRED.

J.L. FOWBLE  
 S. F. CURRIE



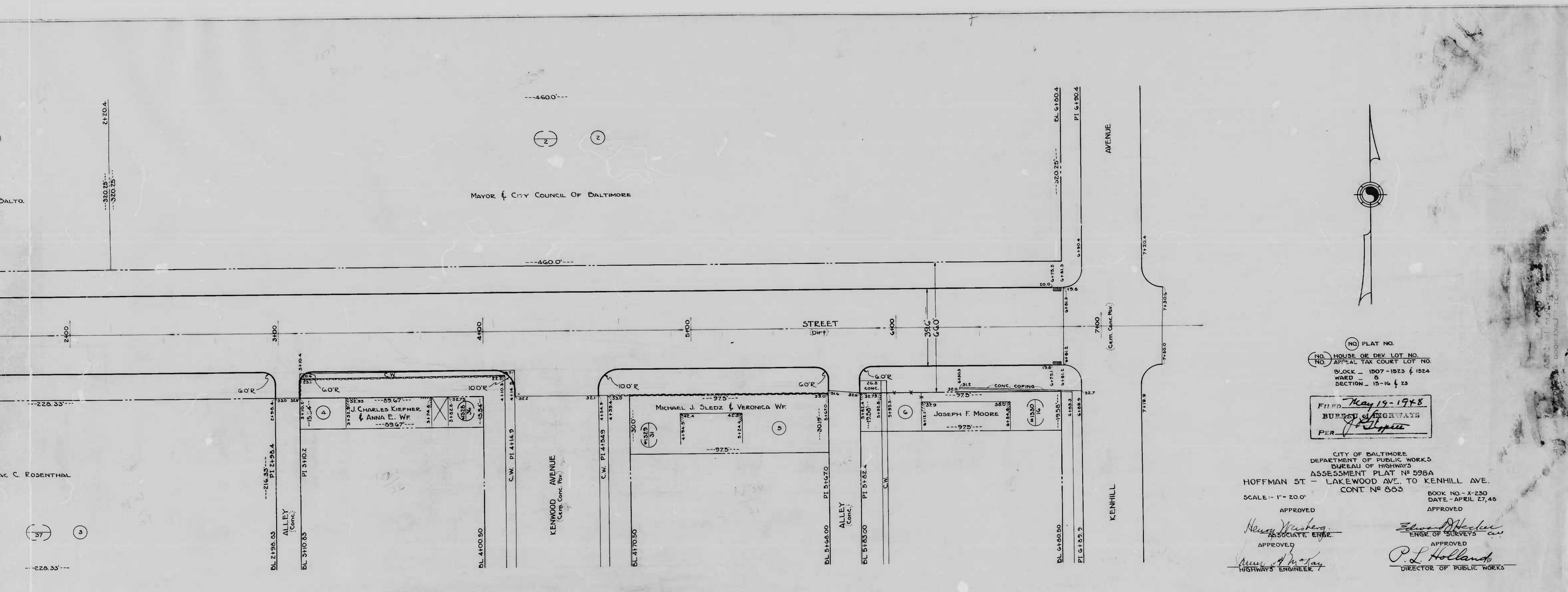
J.L. FOWBLE  
S. J. CURRY





DRAWN BY: R.E. JONES  
 EXAMINED BY: Wm. H. Howell

DEPA  
 LAKEM...  
 CEM...  
 TRINITY...  
 STARTED...  
 SCALE: 1"



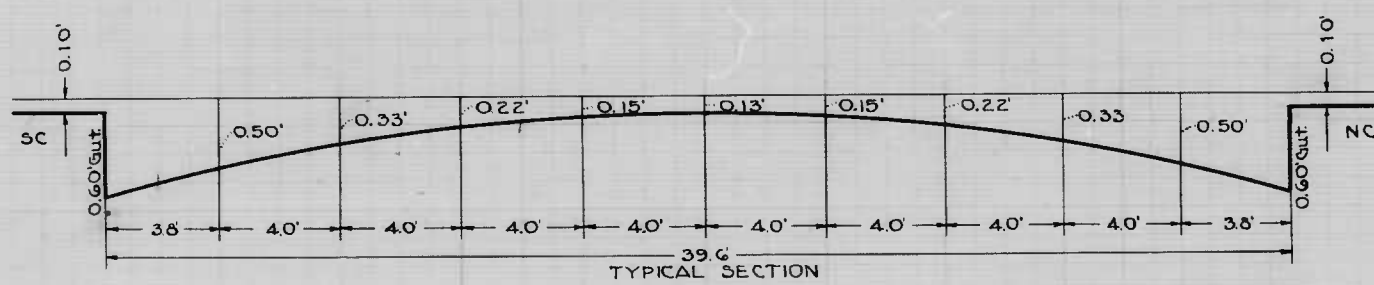
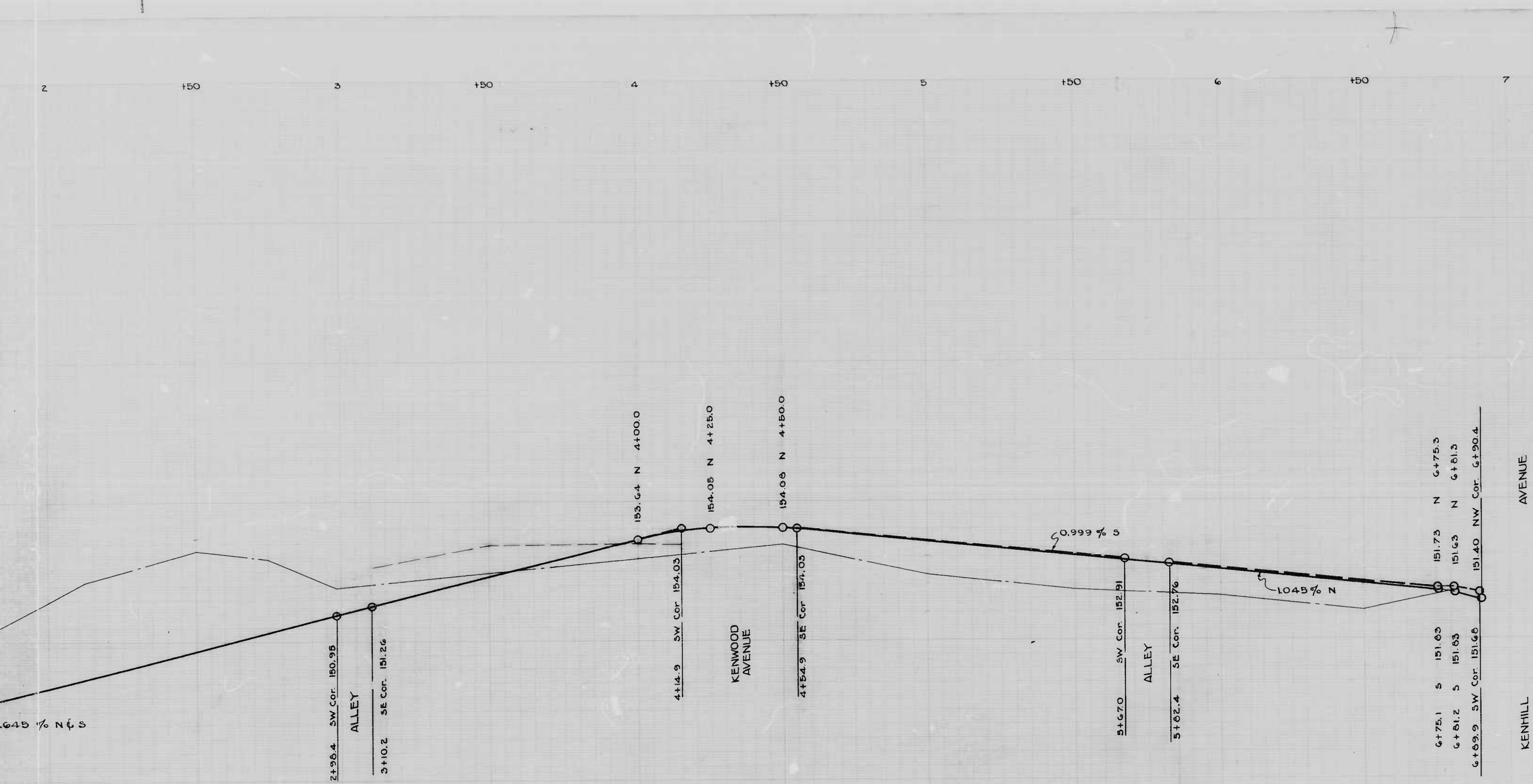
NOTE:-  
 TO BE CEMENT CONCRETE PAVING SEVEN (7) INCHES IN DEPTH.  
 SOIL STABILIZATION MATERIALS AND/OR UNDERDRAINS ARE NOT REQUIRED.

(NO PLAT NO.)  
 (NO HOUSE OR DEV. LOT NO.)  
 (NO APPEAL TAX COURT LOT NO.)  
 BLOCK - 1507 - 1523 & 1524  
 WARD - 8  
 SECTION - 15-16 & 23  
 FILED May 19 - 1948  
 BUREAU OF HIGHWAYS  
 PER [Signature]

CITY OF BALTIMORE  
 DEPARTMENT OF PUBLIC WORKS  
 BUREAU OF HIGHWAYS  
 ASSESSMENT PLAT NO. 598A  
 HOFFMAN ST. - LAKEWOOD AVE. TO KENHILL AVE.  
 CONT. NO. 863  
 SCALE - 1" = 20.0'  
 APPROVED [Signature] ASSOCIATE ENGR.  
 APPROVED [Signature] HIGHWAYS ENGINEER  
 APPROVED [Signature] ENGR. OF SURVEYS  
 APPROVED [Signature] DIRECTOR OF PUBLIC WORKS  
 BOOK NO. - X-250  
 DATE - APRIL 27, 48







CITY OF BALTIMORE  
 DEPARTMENT OF PUBLIC WORKS  
 BUREAU OF HIGHWAYS  
 PROFILE OF  
 HOFFMAN ST. ~ LAKEWOOD AVE. TO KENHILL AVE.  
 CONT. N<sup>o</sup> 883

SCALE: HOR 1"=20.0'  
 VER 1"=2.0'

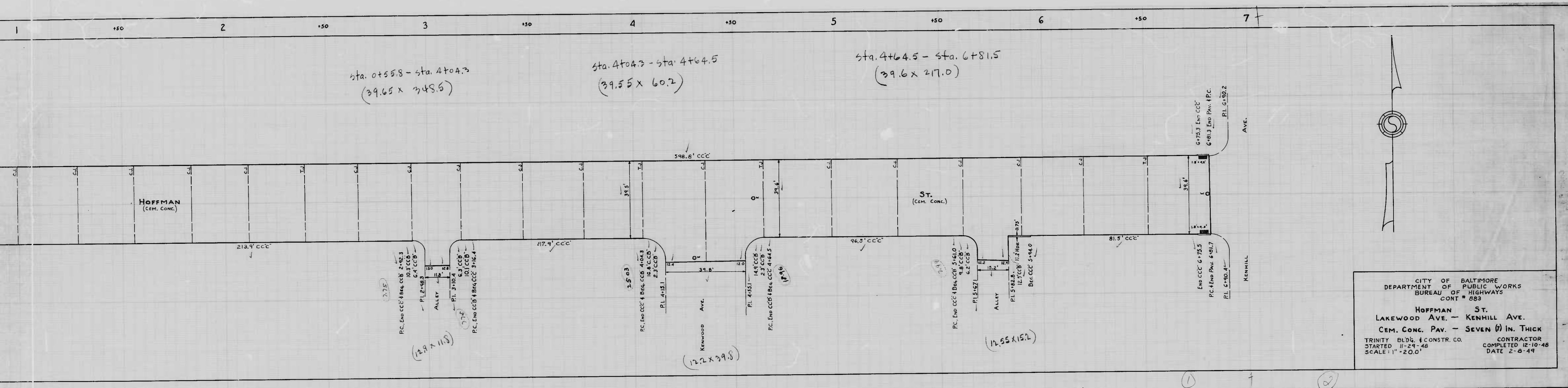
BOOK NO. - X-230  
 DATE - MAY 3, 1948

APPROVED  
*Henry Weiskopf*  
 ASSOCIATE ENGR.

APPROVED  
*Edward J. Hecker*  
 ENGR. OF SURVEYS

APPROVED  
*David S. ...*  
 HIGHWAYS ENGINEER

APPROVED  
*P. L. Hollands*  
 DIRECTOR OF PUBLIC WORKS

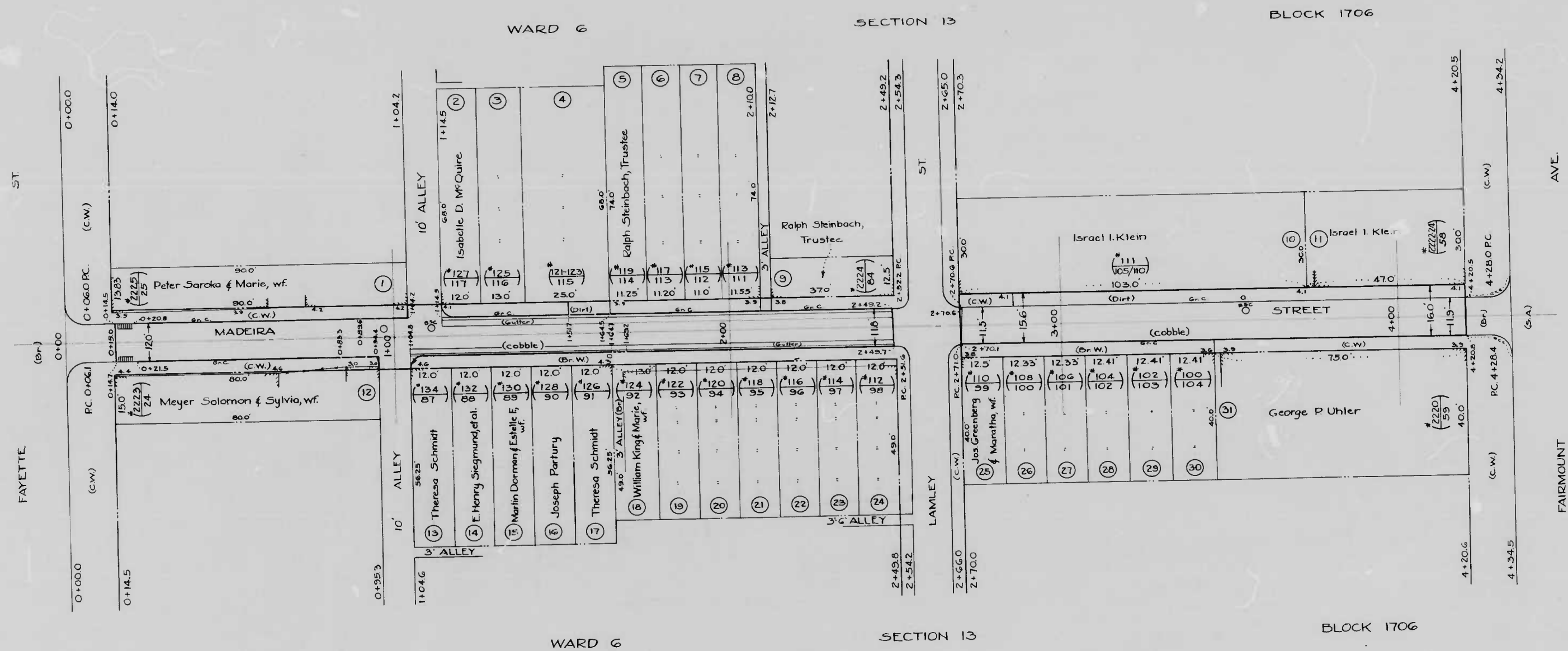


CITY OF BALTIMORE  
 DEPARTMENT OF PUBLIC WORKS  
 BUREAU OF HIGHWAYS  
 CONT # 883

HOFFMAN ST.  
 LAKEWOOD AVE. - KENHILL AVE.  
 CEM. CONC. PAV. - SEVEN (7) IN. THICK

TRINITY BLDG. & CONSTR. CO. CONTRACTOR  
 STARTED 11-29-48 COMPLETED 12-10-48  
 SCALE: 1"=20.0' DATE 2-0-49





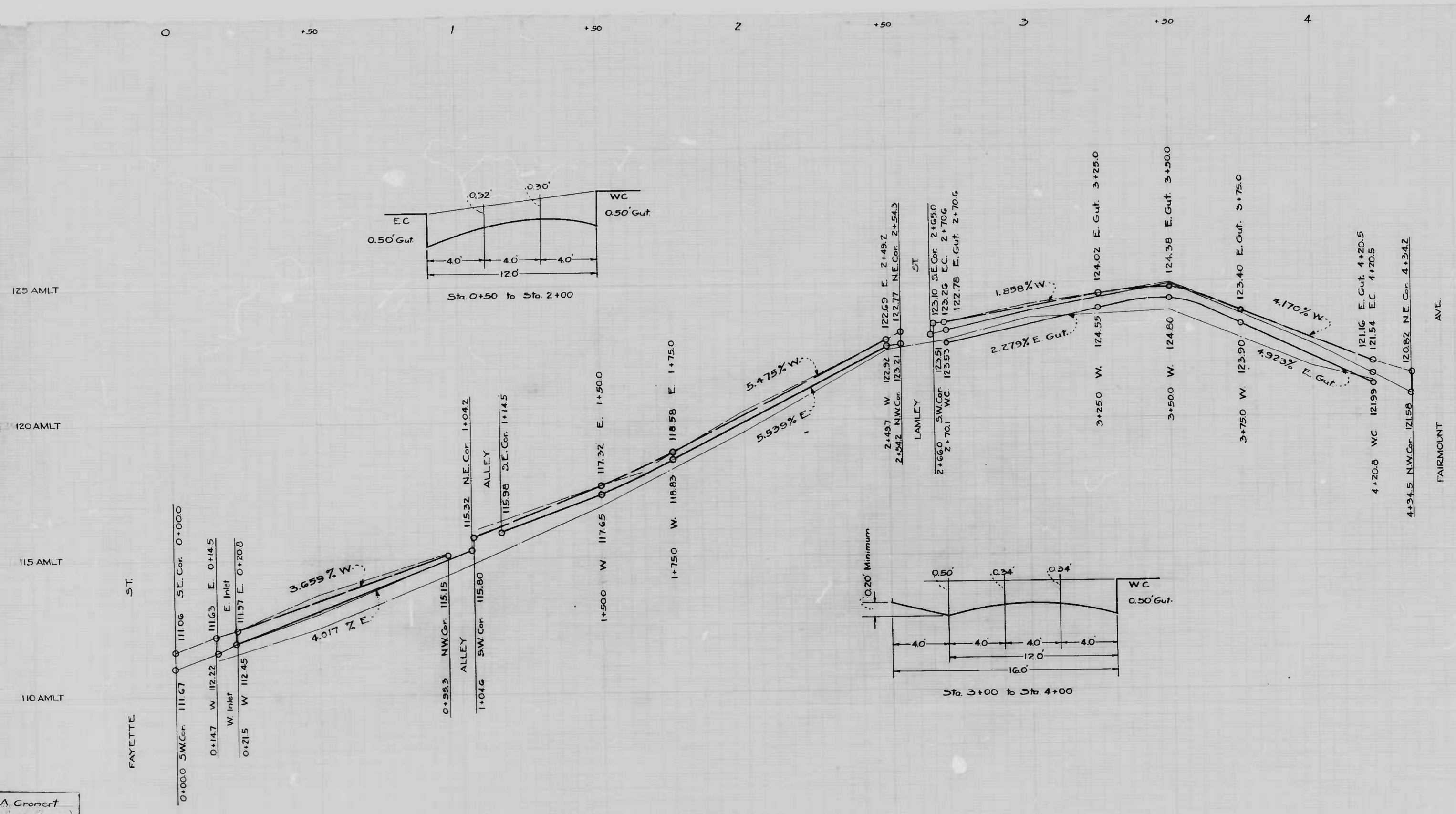
NOTE:  
 TO BE CEMENT CONCRETE  
 PAVING 7" THICK  
 SOIL STABILIZATION MATERIALS  
 AND OR UND. DRAINS ARE NOT  
 REQUIRED.

PLAT N°  
 HOUSE OR DEV. LOT N°  
 APPEAL TAX COURT LOT N°  
 WARD - 6  
 SECTION - 13  
 BLOCK - 1706

FILED *May 17 1948*  
 BUREAU OF HIGHWAYS  
 PER *[Signature]*

CITY OF BALTIMORE  
 DEPARTMENT OF PUBLIC WORKS  
 BUREAU OF HIGHWAYS  
 ASSESSMENT PLAT N° 600-A  
 MADEIRA ST - FAYETTE ST - FAIRMOUNT AVE.  
 SCALE: 1" = 20.0' BOOK N° X-235  
 CONT N° 883 DATE: MAY 12, 1948.  
 APPROVED *[Signature]* APPROVED *[Signature]*  
 ASSOCIATE ENGINEER HIGHWAYS ENGINEER  
 APPROVED *[Signature]* APPROVED *[Signature]*  
 ENGINEER OF SURVEYS DIRECTOR OF PUBLIC WORKS

A. Gronert  
*[Signature]*  
 ENGINEER OF SURVEYS



NOTE:  
 TO BE CEMENT CONCRETE  
 PAVING 7" THICK.  
 SOIL STABILIZATION MATERIALS  
 AND/OR UNDERDRAINS ARE NOT  
 REQUIRED.

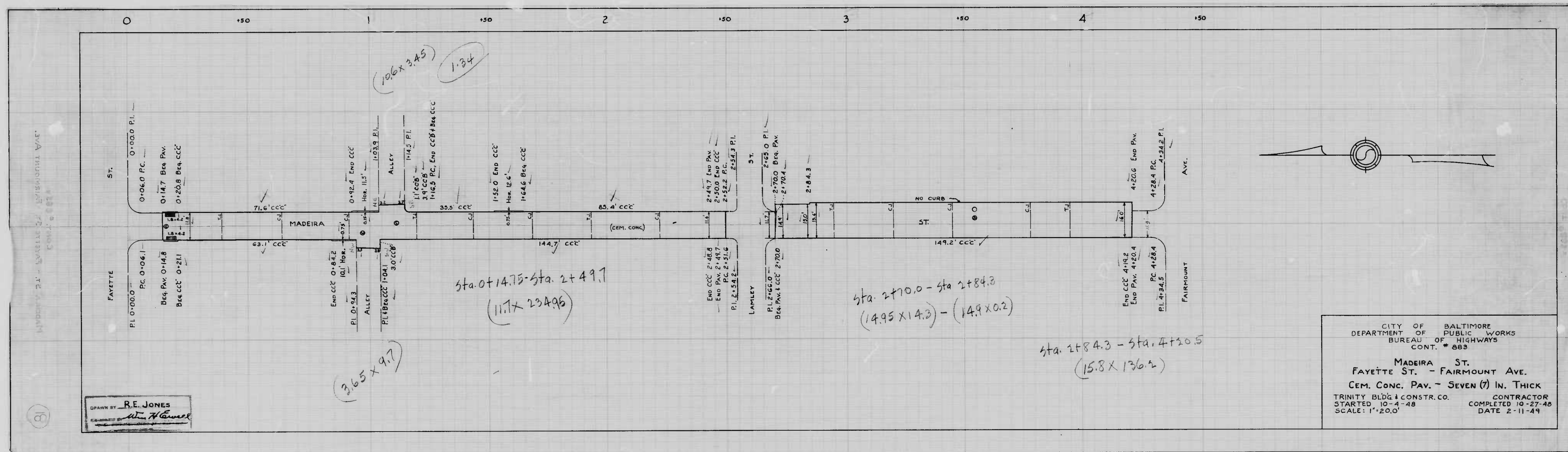
CITY OF BALTIMORE  
 DEPARTMENT OF PUBLIC WORKS  
 BUREAU OF HIGHWAYS

PROFILE OF  
 MADEIRA ST - FAYETTE ST - FAIRMOUNT AVE  
 BOOK No. X-235  
 SCALE: HORIZ. - 1" = 20'  
 VER. - 1" = 20' DATE: JUNE 11, 1948  
 CONT No. 885

APPROVED: *Henry Weatery* ASSOCIATE ENGINEER  
 APPROVED: *James M. Smith* HIGHWAYS ENGINEER  
 APPROVED: *Edward W. Haskins* ENGINEER OF SURVEYS  
 APPROVED: *P. L. Hollands* DIRECTOR OF PUBLIC WORKS

DRAWN BY: A. Gronert  
 EXAMINED BY: *[Signature]*  
 ENG. IN CHARGE OF DRAWING

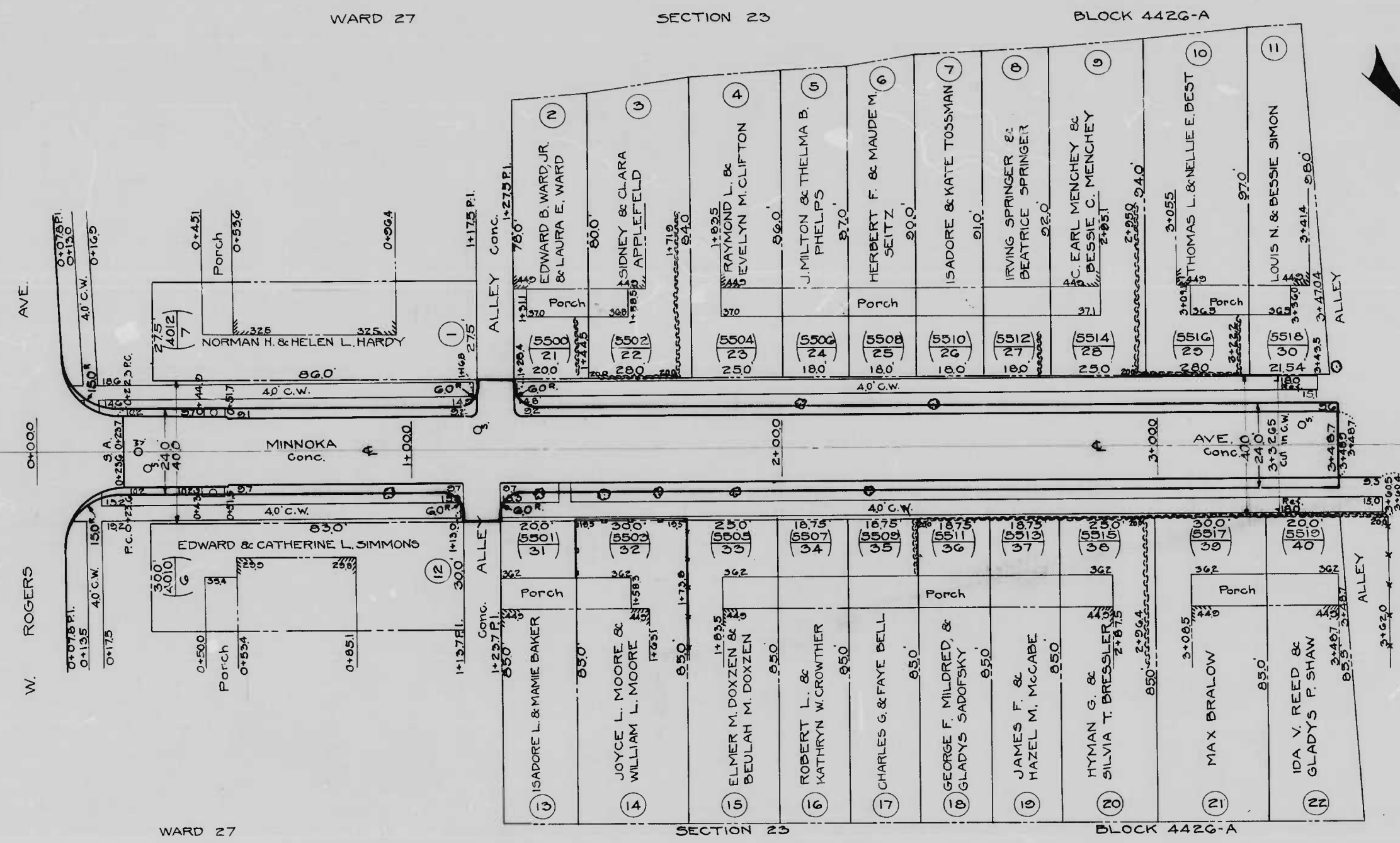




DRAWN BY R.E. JONES  
 CHECKED BY *[Signature]*

CITY OF BALTIMORE  
 DEPARTMENT OF PUBLIC WORKS  
 BUREAU OF HIGHWAYS  
 CONT. # 883

MADEIRA ST. - FAIRMOUNT AVE.  
 FAYETTE ST. - SEVEN (7) IN. THICK  
 CEM. CONC. PAV. - SEVEN (7) IN. THICK  
 TRINITY BLDG. CONSTR. CO. CONTRACTOR  
 STARTED 10-4-48 COMPLETED 10-27-48  
 SCALE: 1"=20.0' DATE 2-11-49



NOTE - SOIL STABILIZATION MATERIALS  
 1. TO BE CEMENT CONCRETE PAVING 7" THICK  
 2. TO BE UNDERDRAINS ARE NOT  
 3. TO BE RED

DRAWN BY U.G.F.  
 EXAMINED BY [Signature]  
 E.S.D. - IN CHARGE OF DEPT. 103

(N) FLAT NO.  
 (Z) HOUSE OR DEV. LOT NO.  
 (A) APPEAL TAX COURT LOT NO.

WARD 27  
 SECTION 23  
 BLOCK 4426-A

FILED May 19-1948  
 BUREAU OF HIGHWAYS  
 PER [Signature]

CITY OF BALTIMORE  
 DEPARTMENT OF PUBLIC WORKS  
 BUREAU OF HIGHWAYS  
 ASSESSMENT PLAT 604-A  
 MINNOKA AVE. - W. ROGERS AVE. - AL. 316 1/2 N.W. OF W. ROGERS AVE.  
 CONTRACT NO. 883 BOOK NO. X229  
 SCALE - 1" = 200' MAY 12, 1948

APPROVED [Signature]  
 ASSOCIATE ENGINEER

APPROVED

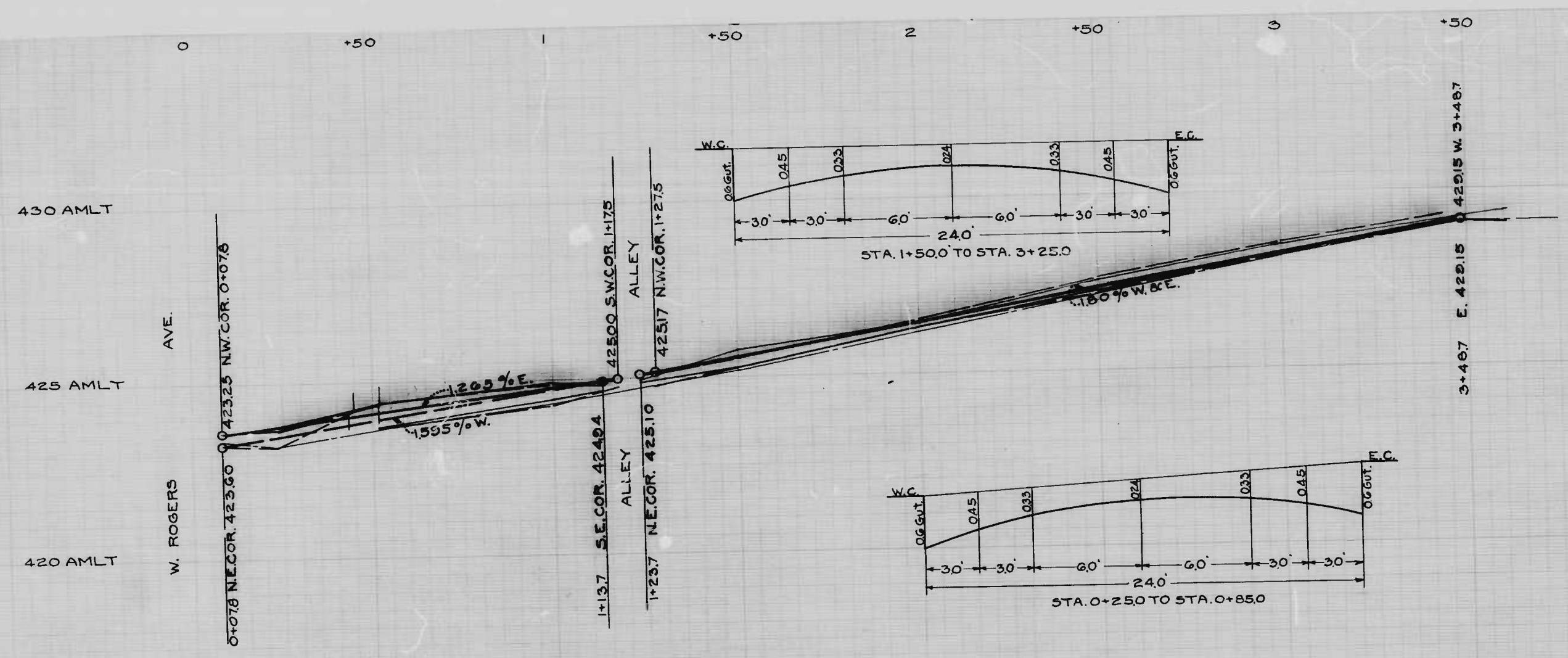
APPROVED [Signature]  
 HIGHWAYS ENGINEER

APPROVED

[Signature]  
 ENGINEER OF SURVEYS

[Signature]  
 DIRECTOR OF PUBLIC WORKS





DRAWN BY J.G.F.  
 EXAMINED BY S.P. Holland  
 ENGINEER IN CHARGE OF DRAWING

NOTE:- SOIL STABILIZATION MATERIALS  
 AND/OR UNDERDRAINS ARE NOT  
 REQUIRED.  
 TO BE CEMENT CONCRETE PAVING 7" THICK

CITY OF BALTIMORE  
 DEPARTMENT OF PUBLIC WORKS  
 BUREAU OF HIGHWAYS  
 PROFILE OF  
 MINNOKA AVE. - W. ROGERS AVE. - AL. SIG. N.W. OF W. ROGERS AVE.  
 CONTRACT NO. 883 BOOK NO. X 220  
 SCALE: 1" = 200' MAY 25, 1940

APPROVED *Henry Weiskopf* ASSOCIATE ENGINEER  
 APPROVED *James A. DeLoach* HIGHWAYS ENGINEER  
 APPROVED *Edward J. Harrison* ENGINEER OF SURVEYS  
 APPROVED *P.L. Holland* DIRECTOR OF PUBLIC WORKS

