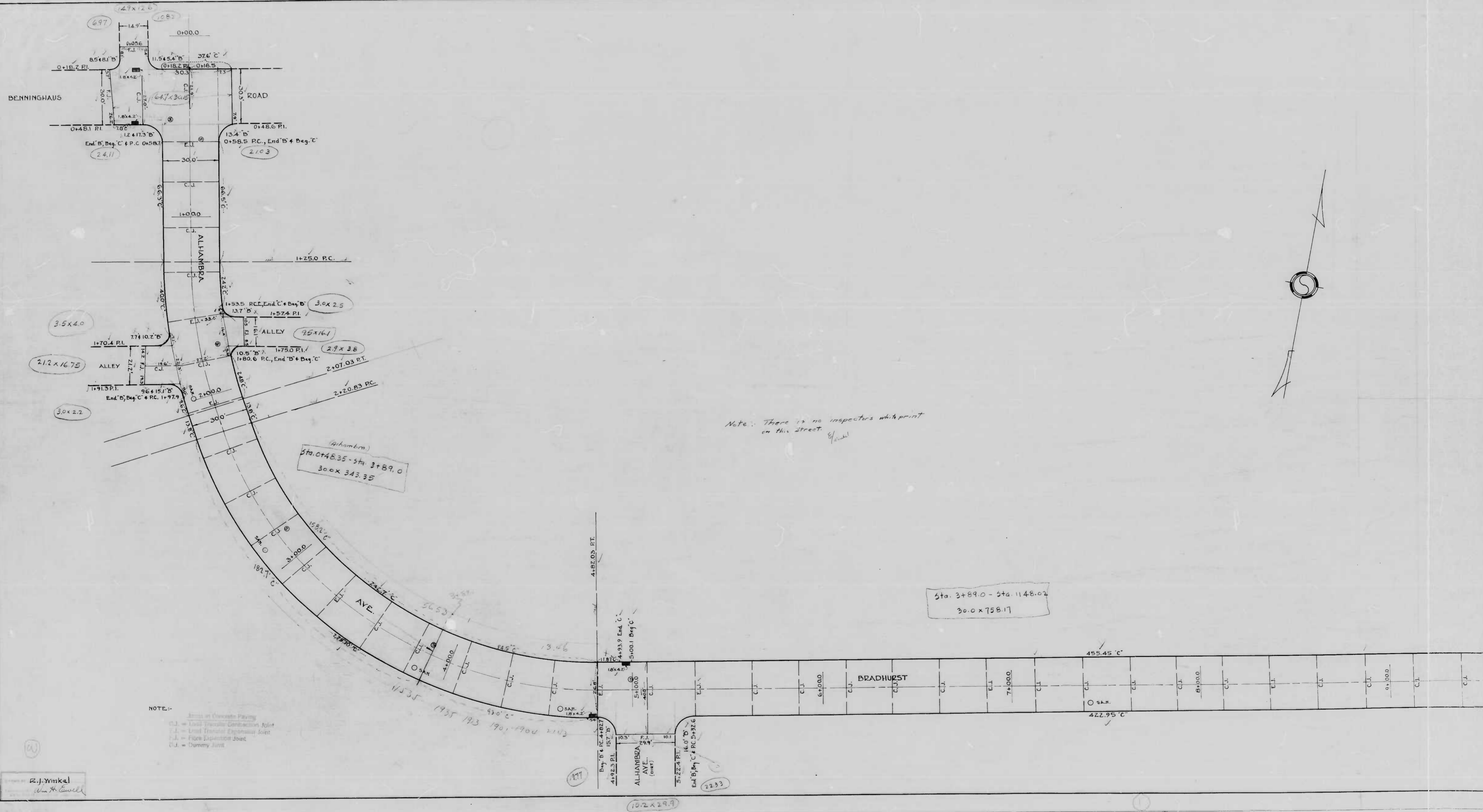


Eggen Miller



CONC. 18" 600# VITRIBLY V.A.E. - BRADHURST RD - BENNINGHAUS RD
CONC. 18" 600# VITRIBLY V.A.E. - BRADHURST RD - BENNINGHAUS RD

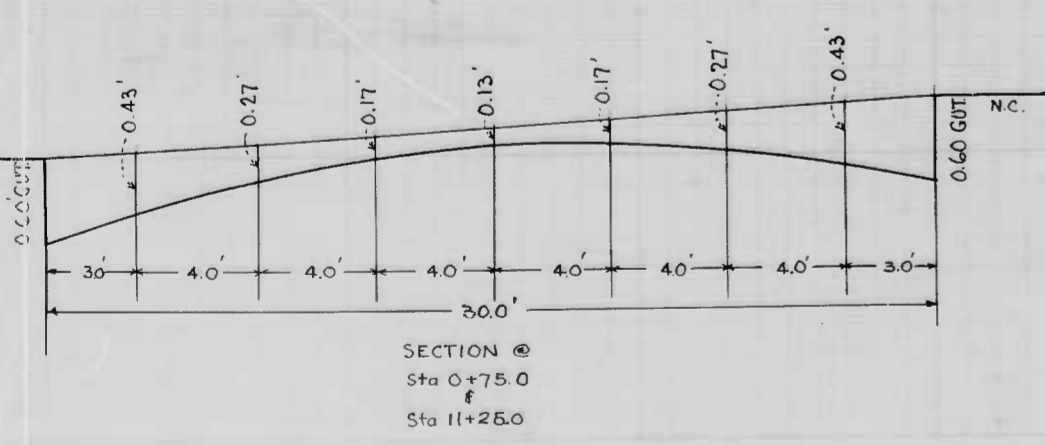
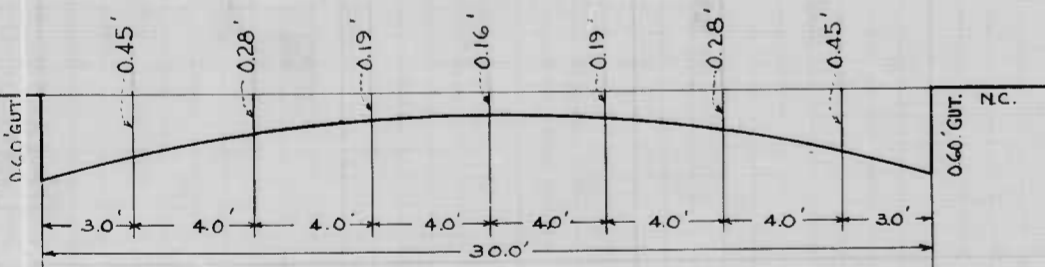
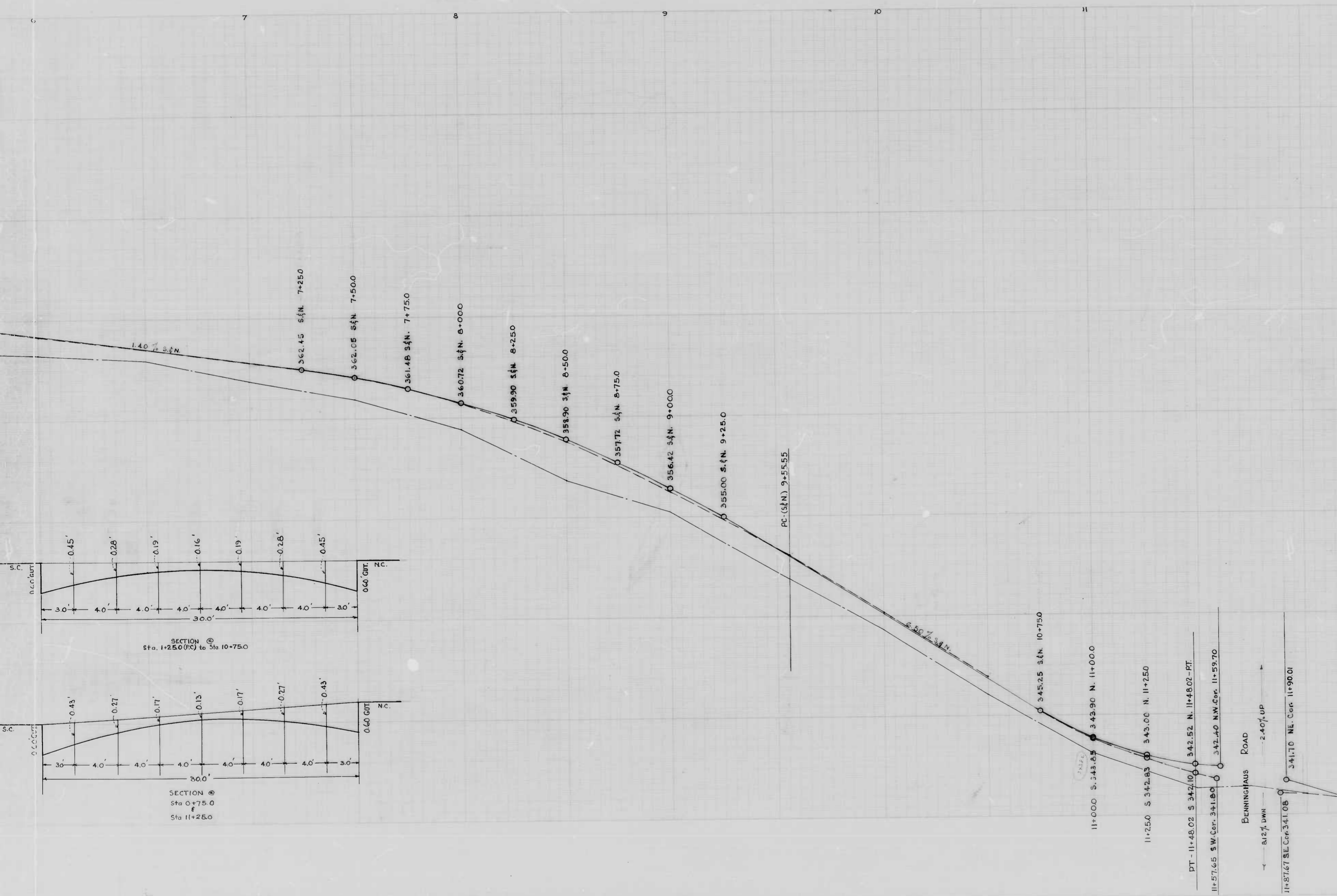
Note: There is no inspectors whiteprint on this street.

(Allambra)
Sta. 0+48.35 - Sta. 3+89.0
300 x 343.35

Sta. 3+89.0 - Sta. 1148.02
30.0 x 758.17

NOTE:-
C.C. = Center of Concrete Paving
C.J. = Cold Transverse Construction Joint
E.J. = End Transverse Expansion Joint
F.J. = Face Expansion Joint
D.J. = Dummy Joint

R.J. Minkel
Civil Engineer

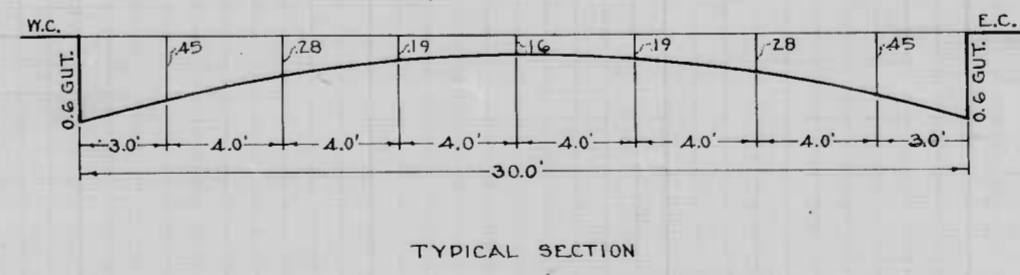
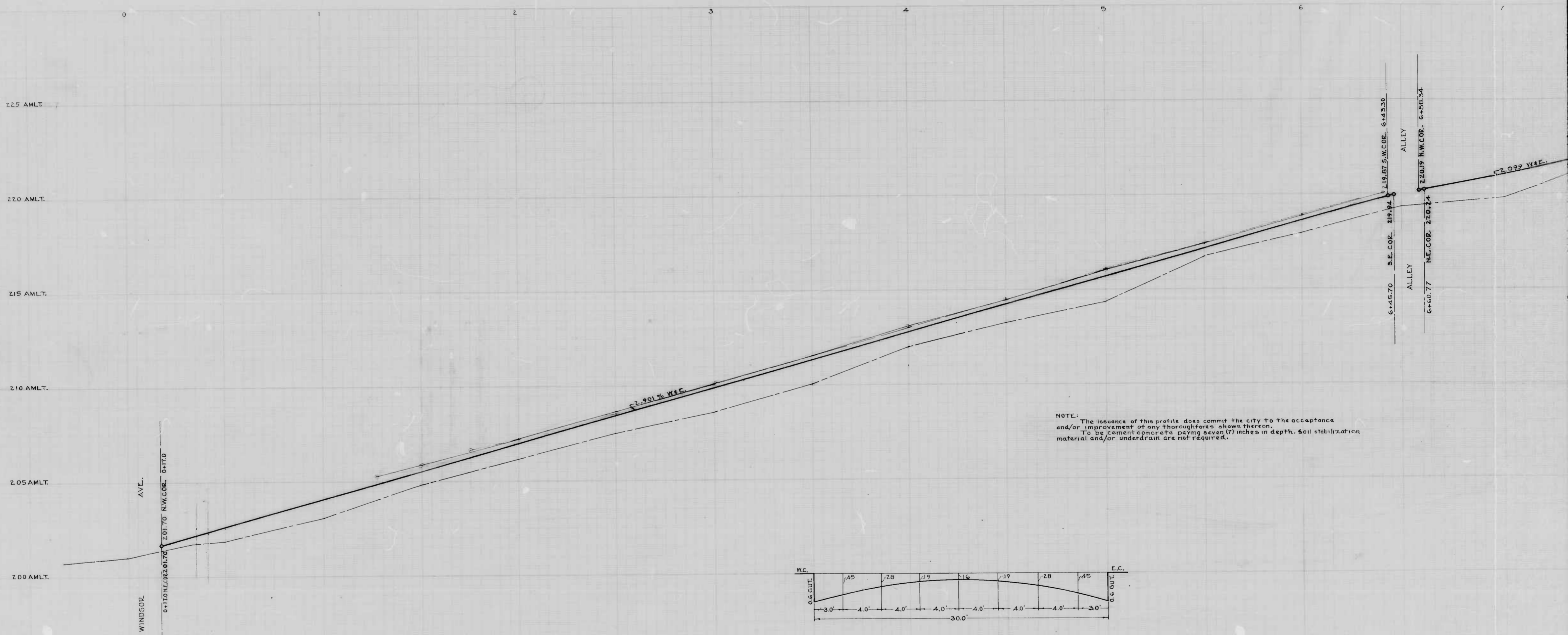


THE ISSUANCE OF THIS PROFILE DOES NOT COMMIT THE CITY TO THE ACCEPTANCE AND IMPROVEMENT OF ANY THROUGHFARE SHOWN HEREON.

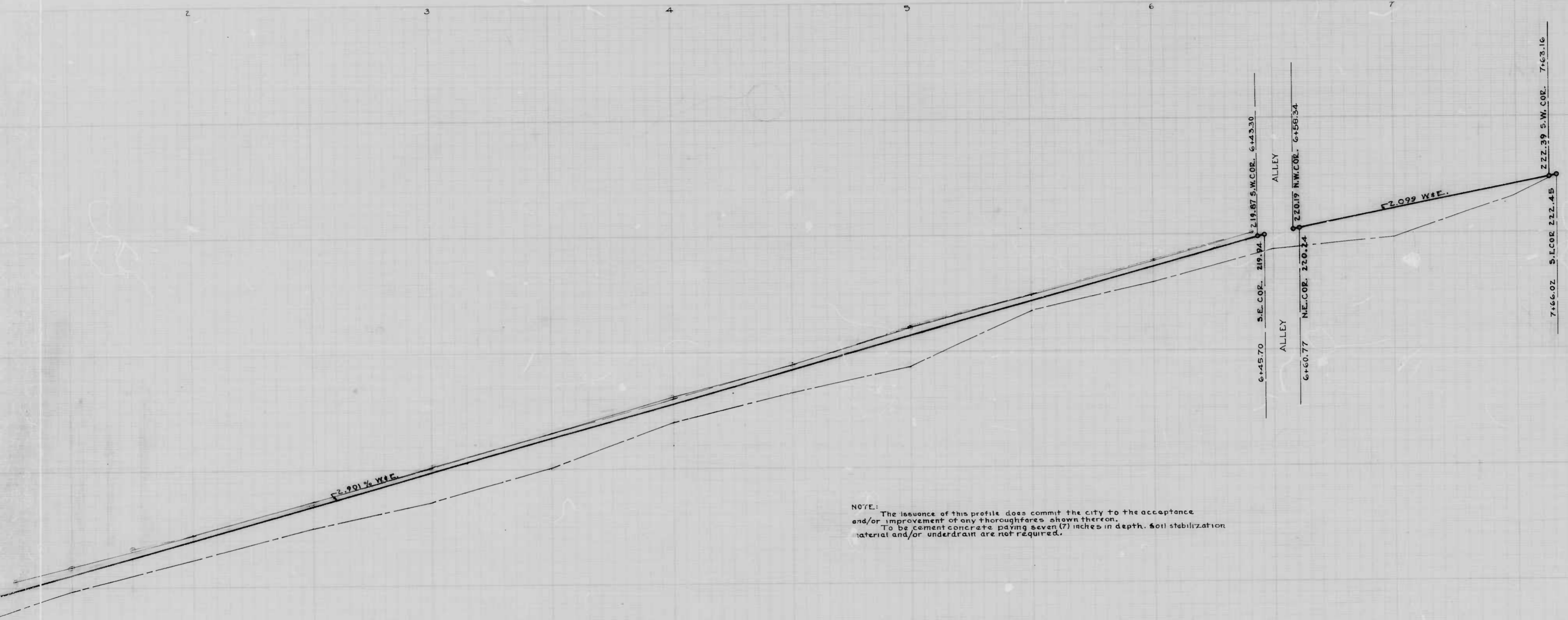
CITY OF BALTIMORE
 DEPARTMENT OF PUBLIC WORKS
 BUREAU OF HIGHWAYS
 PROFILE
 ALHAMBRA AVE. - BENNINGHAUS RD. - BRADHURST RD.
 BRADHURST RD. - ALHAMBRA AVE. - BENNINGHAUS RD.
 CONT. 880
 HOR. - 1" = 200' BOOK. X-237
 VER. - 1" = 2.0' DATE: Sept. 16, 1948

APPROVED -
Henry Weisberg
 ASSOCIATE ENGINEER
 APPROVED -
James J. ...
 HIGHWAYS ENGINEER
 APPROVED -
Edward Wheeler
 ENGR. OF SURVEYS
 APPROVED -
P.L. Hollands
 DIRECTOR OF PUBLIC WORKS

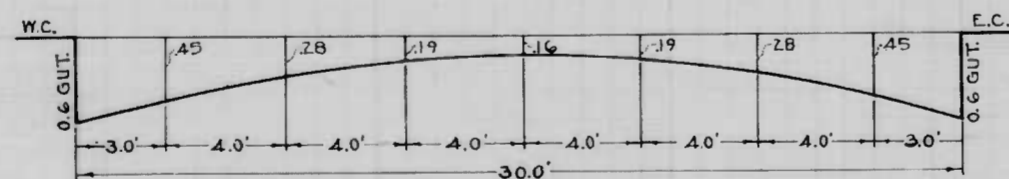
11+000 S. 343.85
 11+250 S. 342.83
 DT - 11+48.02 S. 342.10
 11+57.65 S.W. Cor. 341.80
 11+87.67 SE. Cor. 341.08
 345.25 s.f.N. 10+750
 343.90 N. 11+000
 343.00 N. 11+250
 342.52 N. 11+48.02 - P.T.
 342.40 N.W. Cor. 11+59.70
 BENNINGHAUS ROAD
 812' DWN
 2.40% UP
 341.70 NE. Cor. 11+9001



R. J. Yankel
 ENGINEER
 CIVIL ENGINEERING
 1000 ...
 ...



NOTE: The issuance of this profile does commit the city to the acceptance and/or improvement of any thoroughfare shown thereon. To be cement concrete paving seven (7) inches in depth. Soil stabilization material and/or underdrain are not required.

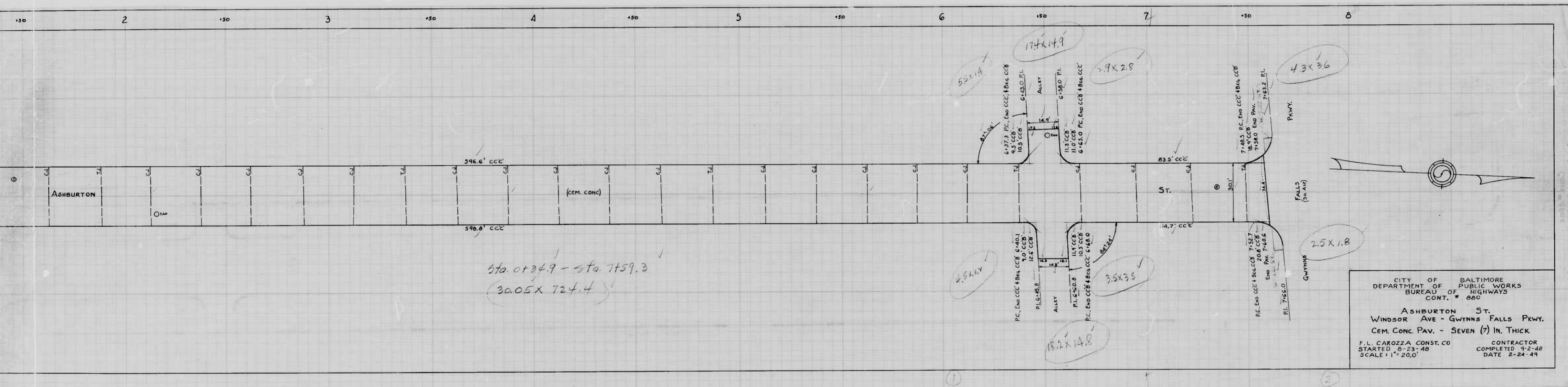


TYPICAL SECTION

CITY OF BALTIMORE
 DEPARTMENT OF PUBLIC WORKS
 BUREAU OF HIGHWAYS
 PROFILE OF
 ASHBURTON ST. - WINDSOR AVE. - GWYNNNS FALLS PKWY
 SCALE: HOR. 1" = 20.0' BOOK NO. X - 218
 VER. 1" = 2.0'
 CONT. NO. 880 DATE: MAY 25, 1948

APPROVED: *Henry Weisberg* ASSOCIATE ENGINEER
 APPROVED: *James M. McLaughlin* HIGHWAYS ENGINEER

APPROVED: *Edward Whelan* ENGINEER OF SURVEYS
 APPROVED: *Paul Holland* DIRECTOR OF PUBLIC WORKS

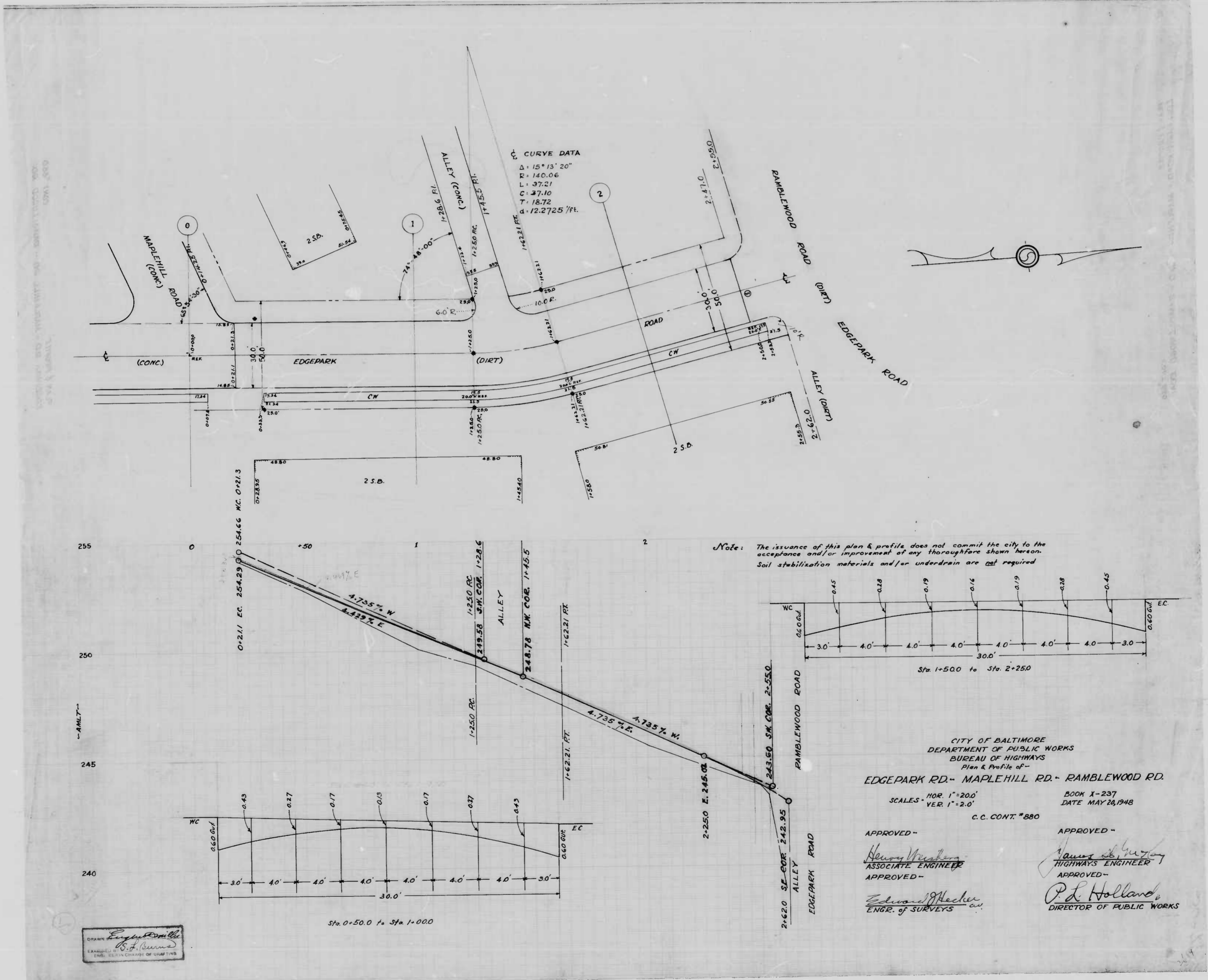


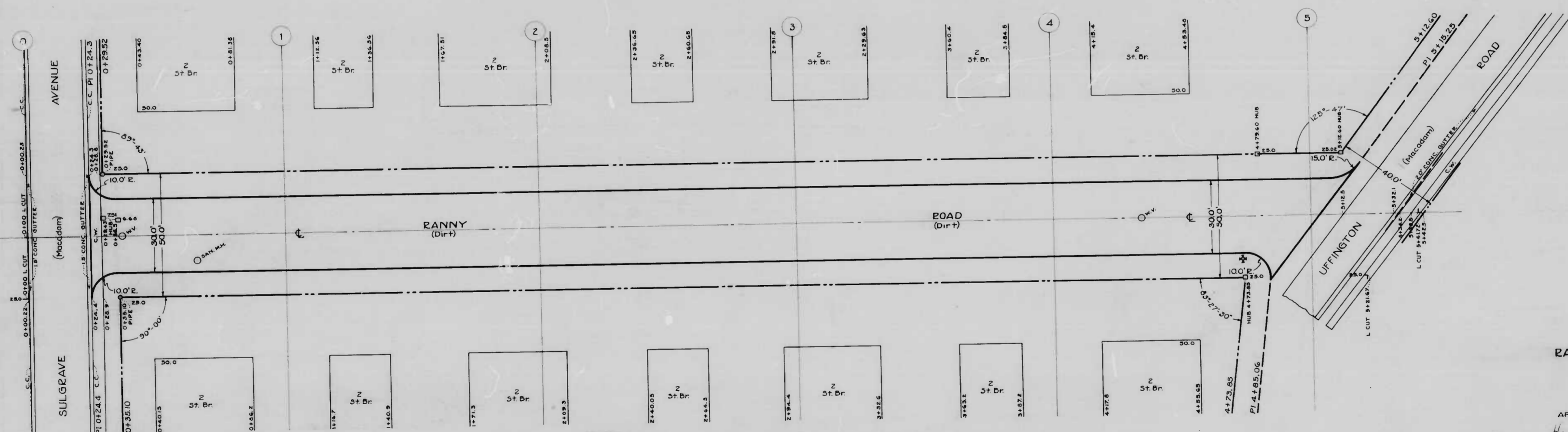
CITY OF BALTIMORE
 DEPARTMENT OF PUBLIC WORKS
 BUREAU OF HIGHWAYS
 CONT. # 880

ASHBURTON ST.
 WINDSOR AVE - GWYNNS FALLS PKWY.
 CEM. CONC. PAV. - SEVEN (7) IN. THICK

F.L. CAROZZA CONST. CO
 STARTED 8-23-48
 SCALE 1" = 20.0'

CONTRACTOR
 COMPLETED 9-2-48
 DATE 2-24-49





NOTE:-
 THE ISSUANCE OF THIS PLAN DOES NOT COMMIT THE CITY TO
 THE ACCEPTANCE AND/OR IMPROVEMENT OF ANY THOROUGHFARES
 SHOWN THEREON.
 TO BE CEMENT CONCRETE PAVING SEVEN (7) INCHES THICK.
 SOIL STABILIZATION MATERIALS AND/OR UNDERDRAINS ARE
 NOT REQUIRED.

CITY OF BALTIMORE
 DEPARTMENT OF PUBLIC WORKS
 BUREAU OF HIGHWAYS
 PLAN
 RANNY RD.-SULGRAVE AVE.-UFFINGTON RD.
 CONT. NO 880
 Book No X-231
 Scale: 1" = 200' Date: 4-20-48

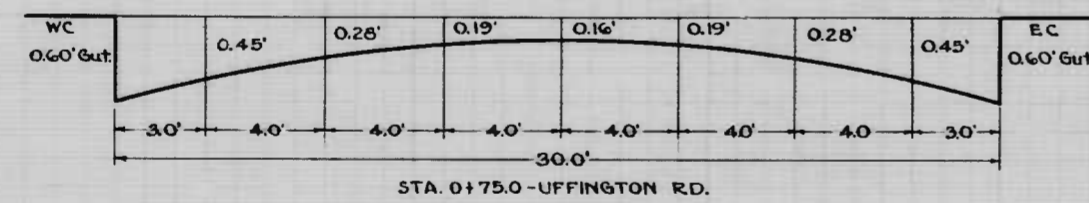
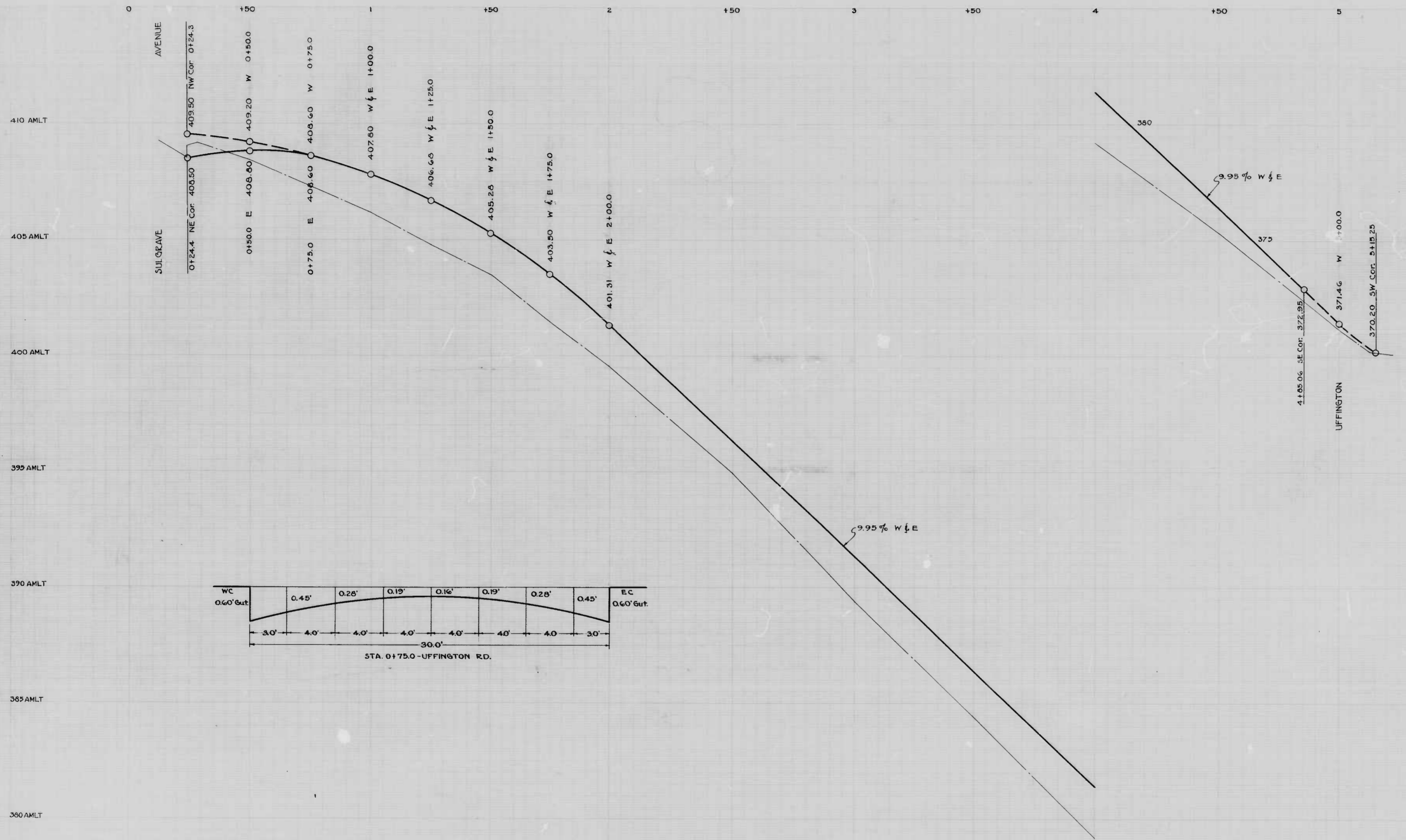
APPROVED
Henry Westers
 ASSOCIATE ENGR.

APPROVED
James A. McGraw
 HIGHWAYS ENGR.

APPROVED
Edward J. Anderson
 ENGR. OF SURVEYS

APPROVED
P. L. Hollands
 DIRECTOR OF PUBLIC WORKS

J.L. Foyble
 S. G. Burns



NOTE -
 THE ISSUANCE OF THIS PROFILE DOES NOT
 COMMIT THE CITY TO THE ACCEPTANCE AND/
 OR IMPROVEMENT OF ANY THOROUGHFARES
 SHOWN HEREON.
 TO BE CEMENT CONCRETE PAVING SEVEN (7)
 INCHES THICK. SOIL STABILIZATION MATERIALS
 AND/OR UNDERDRAINS ARE NOT REQUIRED.

CITY OF BALTIMORE
 DEPARTMENT OF PUBLIC WORKS
 BUREAU OF HIGHWAYS
 PROFILE
 RANNY RD. - SULGRAVE AVE - UFFINGTON ROAD

CONT. NO 560
 BOOK No X-231

SCALES - HOR. 1" = 20.0'
 VER. 1" = 2.0'

DATE: 4-20-48

APPROVED
Henry Weisberg
 ASSOCIATE ENGR.

APPROVED
James A. McGraw
 HIGHWAYS ENGR.

APPROVED
Edward A. Macken
 ENGR. OF SURVEYS

APPROVED
P.L. Hollands
 DIRECTOR OF PUBLIC WORKS

ENGINEER
J. A. Stubble
 CIVIL ENGINEER

