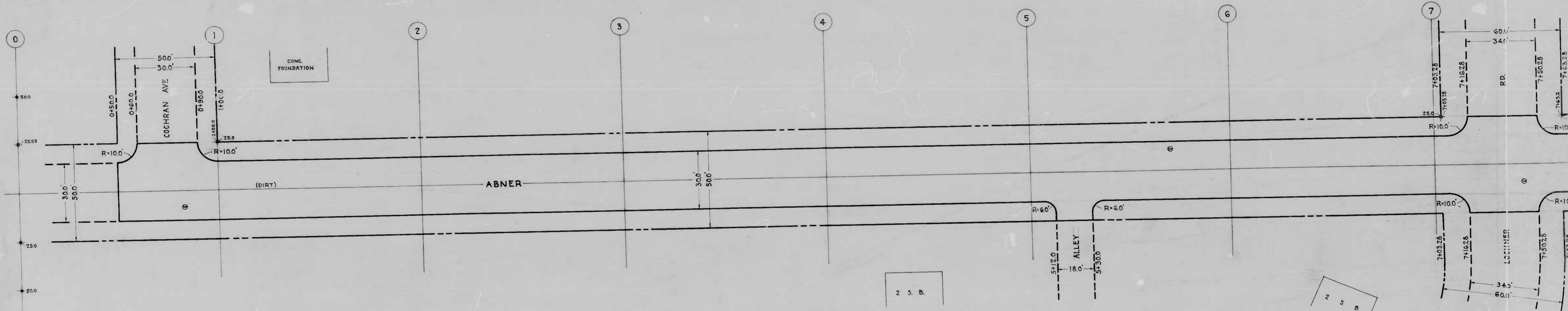


876

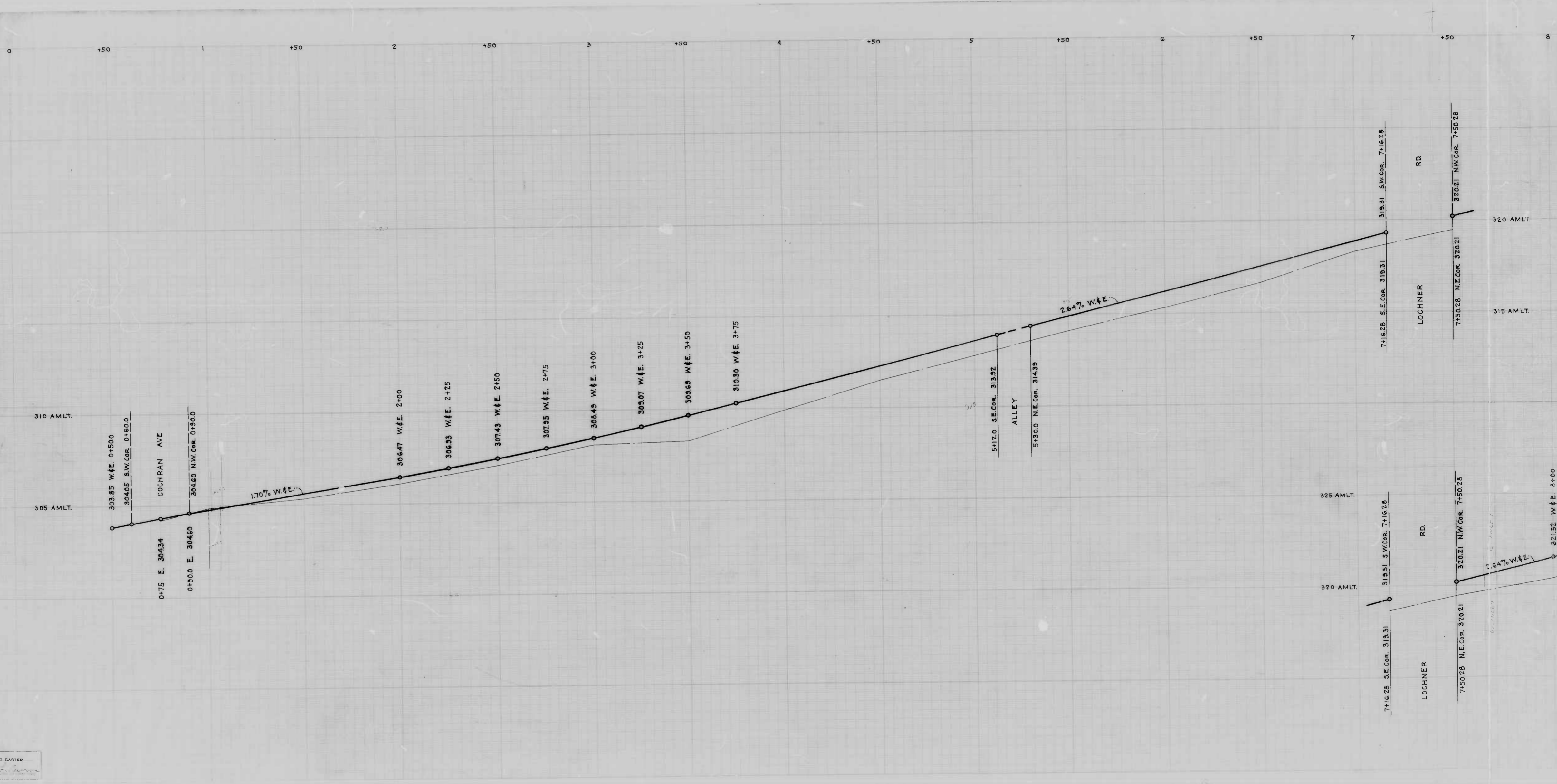
RATIO - 24

1



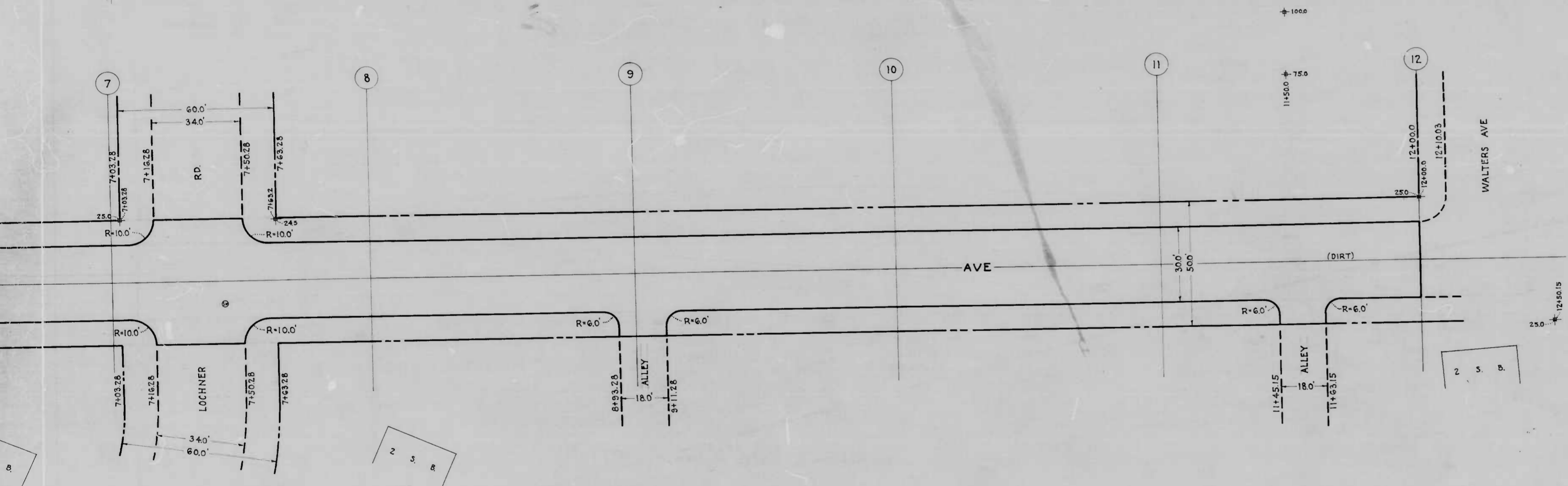
J. D. CARTER  
Surveyor  
No. 12345

WOODWILL VAE









CITY OF BALTIMORE  
 DEPARTMENT OF PUBLIC WORKS  
 BUREAU OF HIGHWAYS  
**PLAN OF**  
**ABNEF AVE - COCHRAN AVE - WALTERS AVE.**  
 SCALE - 1" = 20'  
 CONT. No. 876  
 BOOK - C 876  
 DATE - JULY, 30, 1948

APPROVED  
*Henry Weisberg*  
 ASSOCIATE ENGINEER

APPROVED  
*W. J. DeLong*  
 HIGHWAYS ENGINEER

APPROVED  
*Edward H. Miller*  
 ENGINEER OF SURVEYS

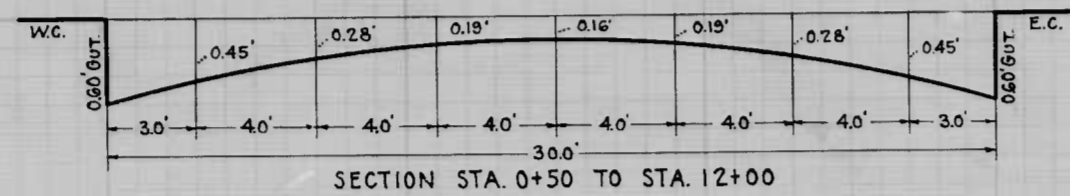
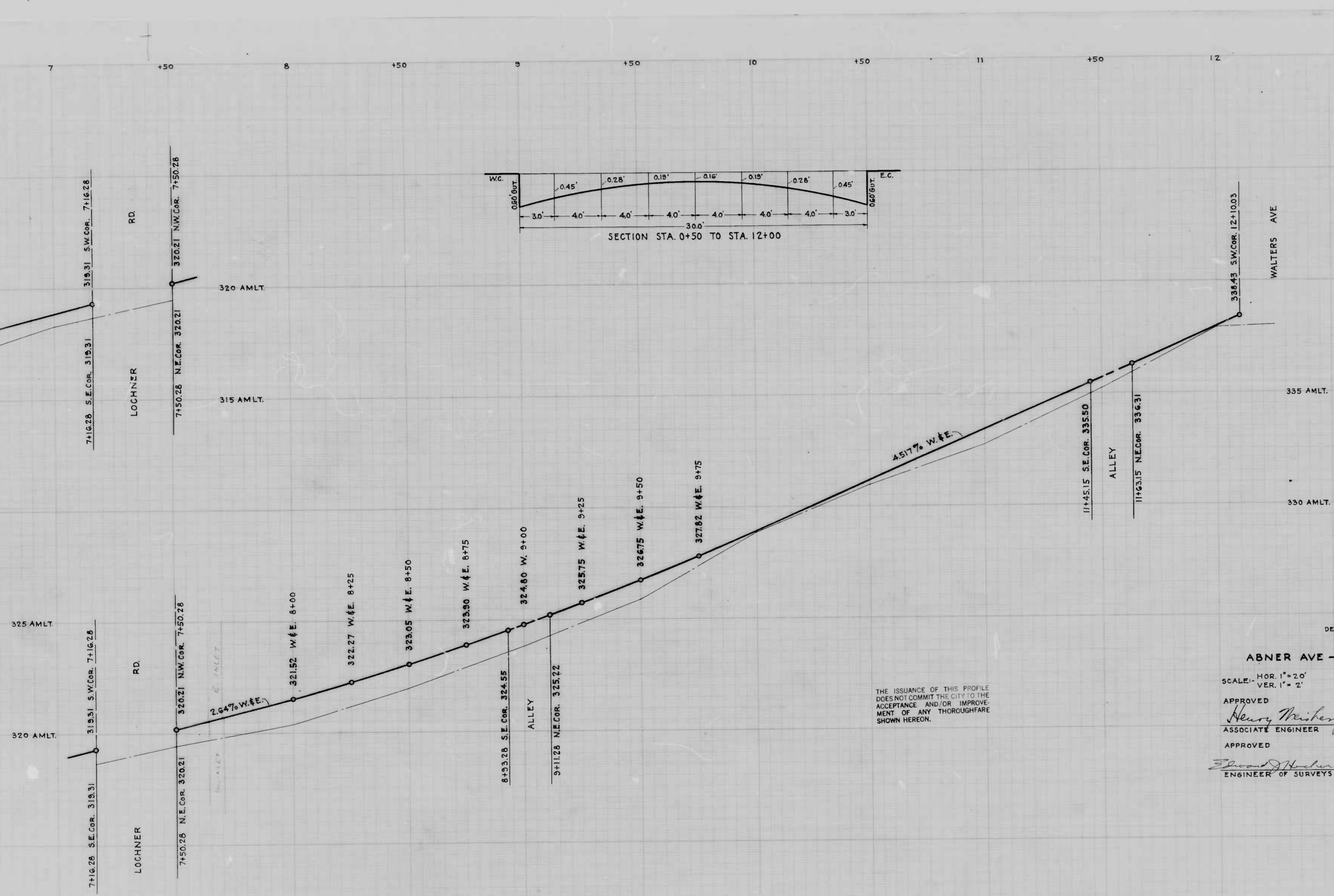
APPROVED  
*C. L. Hollanda*  
 DIRECTOR OF PUBLIC WORKS

TO BE CEMENT CONCRETE PAVING 7" THICK

SOIL STABILIZATION MATERIALS AND OR UNDERDRAINS ARE NOT REQUIRED.

THE ISSUANCE OF THIS PLAN DOES NOT CONSTITUTE THE CITY TO THE ACCEPTANCE AND THE IMPROVEMENT OF ANY TYPE OF FARE SHOWN HEREIN.

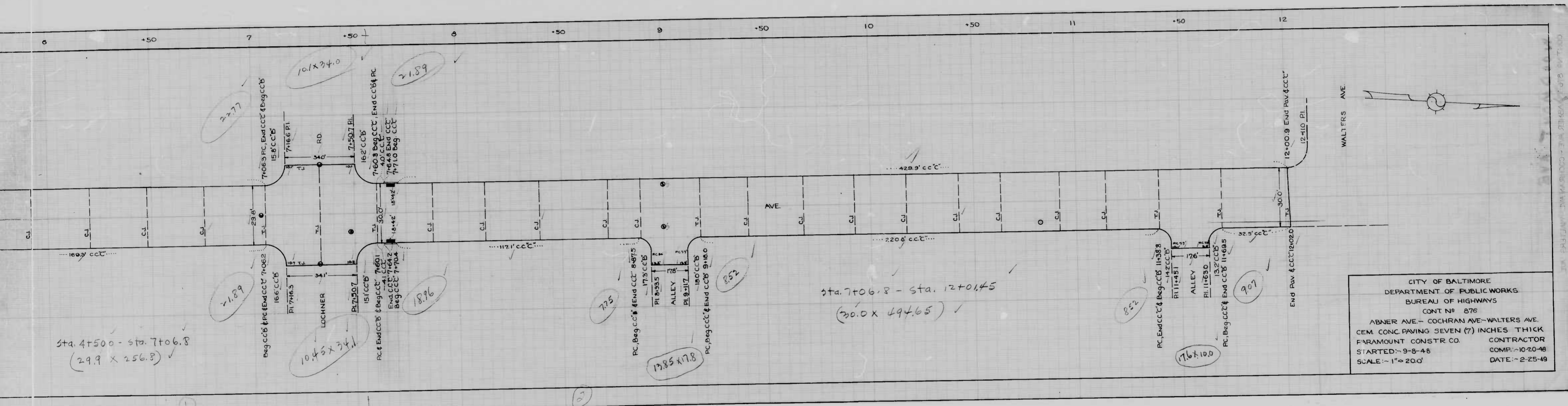




THE ISSUANCE OF THIS PROFILE DOES NOT COMMIT THE CITY TO THE ACCEPTANCE AND/OR IMPROVEMENT OF ANY THOROUGHFARE SHOWN HEREON.

CITY OF BALTIMORE  
 DEPARTMENT OF PUBLIC WORKS  
 BUREAU OF HIGHWAYS  
**PROFILE OF  
 ABNER AVE - COCHRAN AVE - WALTERS AVE.**  
 CONT. No. 876      BOOK - C 876  
 SCALE - HOR. 1" = 20'      DATE - JULY 31, 1948  
 VER. 1" = 2'  
 APPROVED: *Henry Weisberg* ASSOCIATE ENGINEER  
 APPROVED: *John J. Hartog* HIGHWAYS ENGINEER  
 APPROVED: *Edward H. ...* ENGINEER OF SURVEYS  
 APPROVED: *P. L. Hollands* DIRECTOR OF PUBLIC WORKS

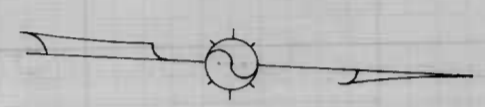
ABNER AVE - COCHRAN AVE - WALTERS AVE  
 318 4th TWY. CO. 111000  
 318 4th TWY. CO. 111000  
 318 4th TWY. CO. 111000



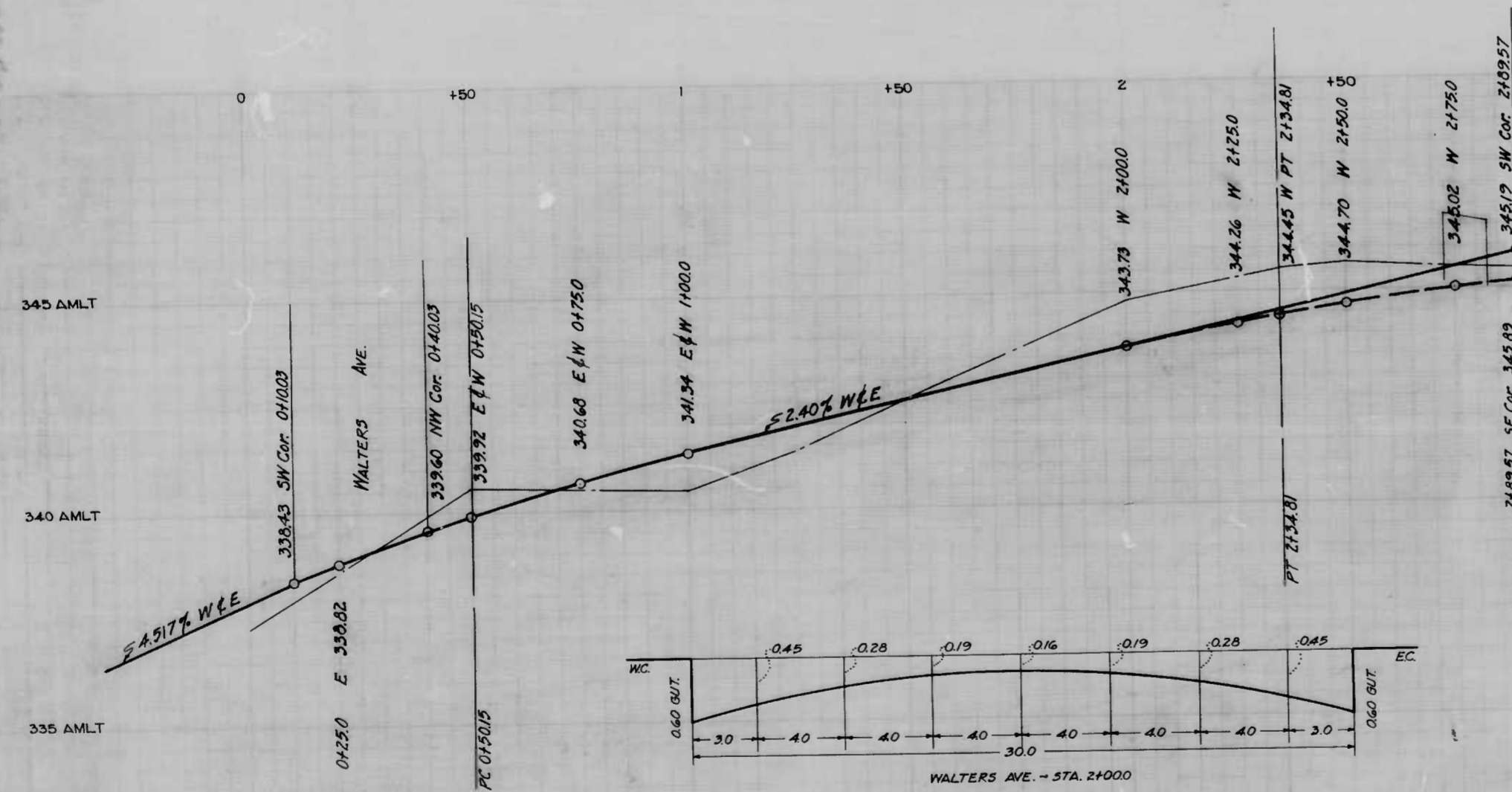
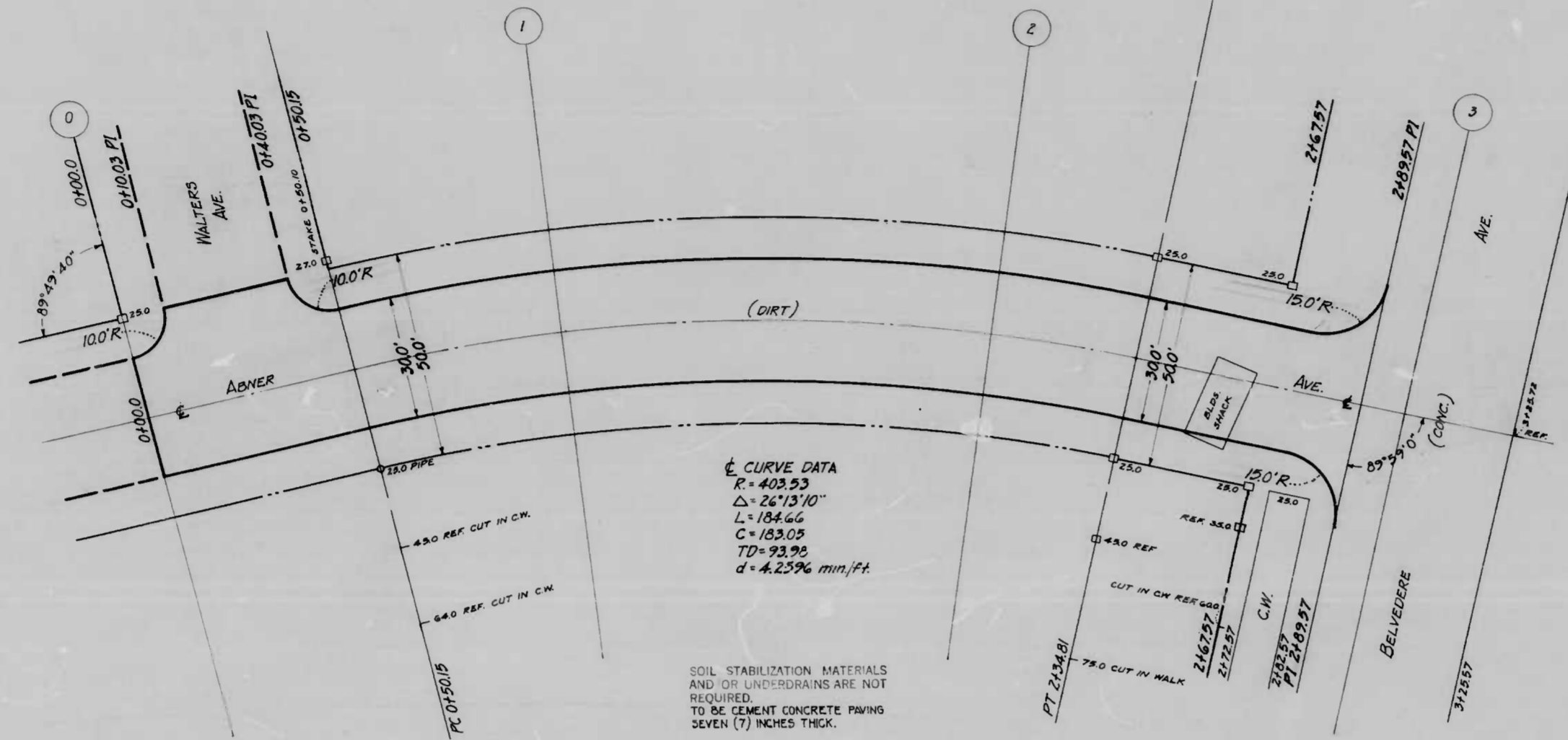
CITY OF BALTIMORE  
 DEPARTMENT OF PUBLIC WORKS  
 BUREAU OF HIGHWAYS  
 CONT NO 876  
 ABNER AVE - COCHRAN AVE - WALTERS AVE.  
 CEM. CONC PAVING SEVEN (7) INCHES THICK  
 PARAMOUNT CONSTR CO. CONTRACTOR  
 STARTED - 9-8-48 COMP. - 10-20-48  
 SCALE - 1" = 200' DATE - 2-25-49

Sta. 4+50 - Sta. 7+06.8  
 (29.9 x 256.8)

Sta. 7+06.8 - Sta. 12+01.45  
 (20.0 x 494.65)







THE ISSUANCE OF THIS PLAN AND PROFILE DOES NOT COMMIT THE CITY TO THE ACCEPTANCE AND OR IMPROVEMENT OF ANY THROUGH FARE SHOWN HEREON.

CITY OF BALTIMORE  
 DEPARTMENT OF PUBLIC WORKS  
 BUREAU OF HIGHWAYS

ABNER AVE. - WALTERS AVE. - BELVEDERE AVE.

PLAN - 1" = 20.0'  
 SCALES PROF - 1" = 20.0'  
 VER - 1" = 2.0'

BOOK NO. 876  
 CONT. NO. 876  
 DATE - OCT 13, 1948

APPROVED  
*Henry Weisberg*  
 ASSOCIATE ENGINEER

APPROVED  
*James W. J. J.*  
 HIGHWAYS ENGINEER

APPROVED  
*P. L. Hollander*  
 DIRECTOR OF PUBLIC WORKS

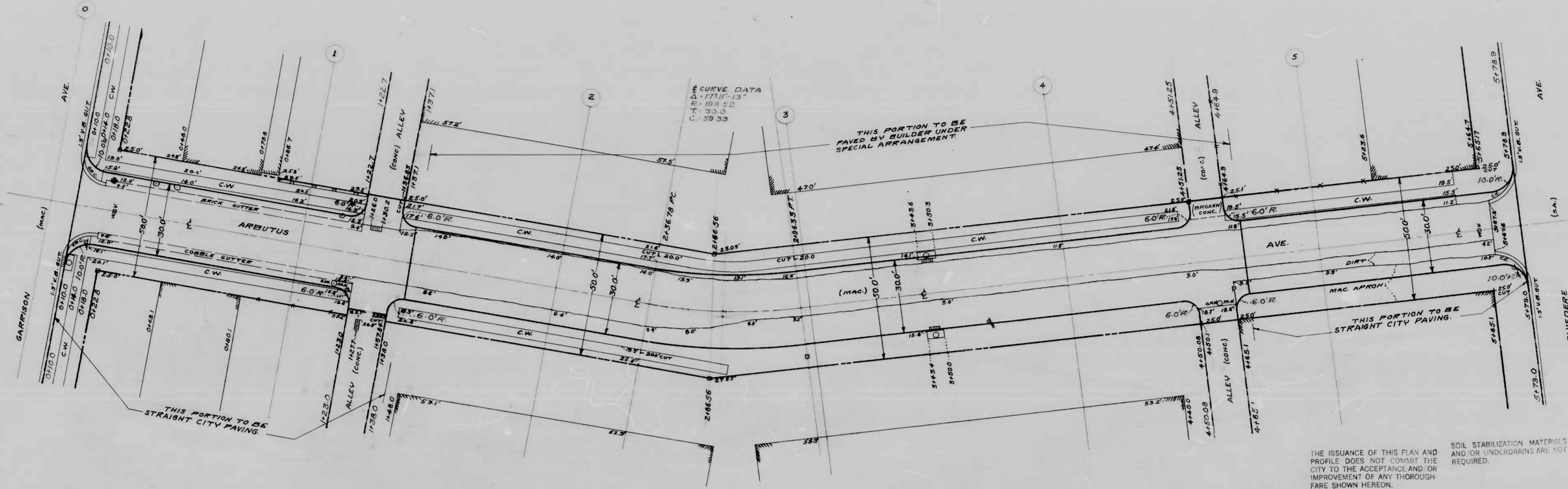
ENGINEER OF SURVEYS

DRAWN BY *M. F. FOWLER*  
 EXAMINED BY *B. J. BARNARD*  
 ENGINEER IN CHARGE OF TRAFFIC

2100  
 2021



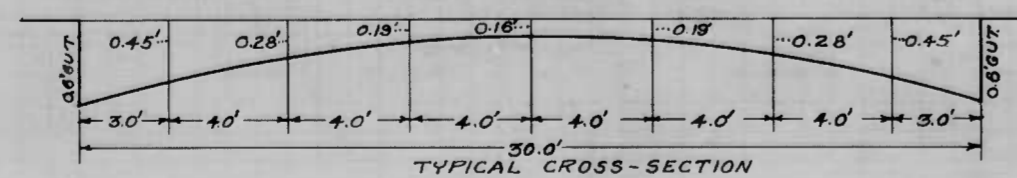
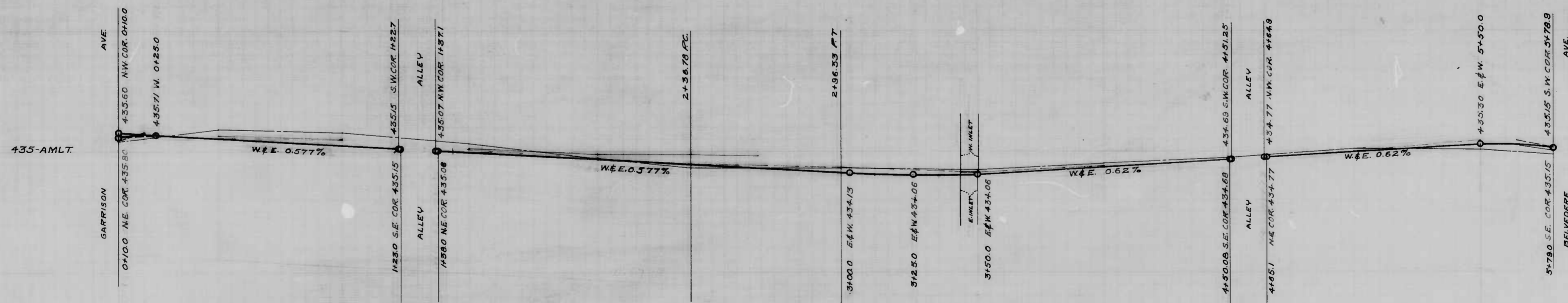




THE ISSUANCE OF THIS PLAN AND PROFILE DOES NOT COMMIT THE CITY TO THE ACCEPTANCE AND OR IMPROVEMENT OF ANY THROUGHFARE SHOWN HEREON.

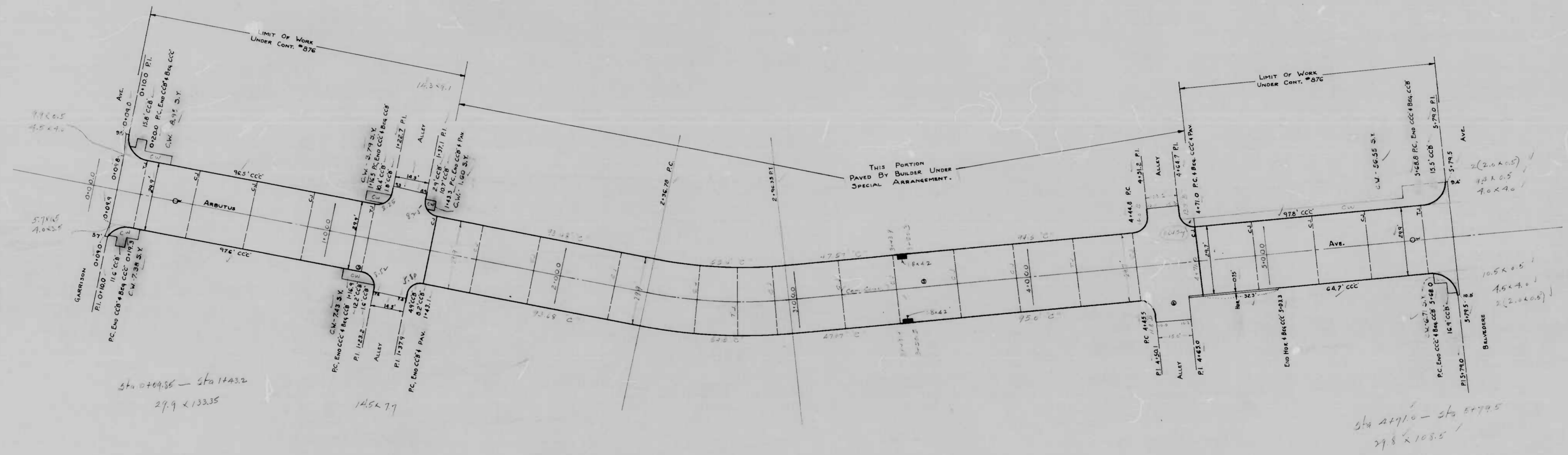
SOIL STABILIZATION MATERIALS AND OR UNDERDRAINS ARE NOT REQUIRED.

To be Cement Concrete Paving Seven (7) inches thick.



Drawn by J.H. Bernstein  
 Checked by E. J. ...  
 Approved by ...

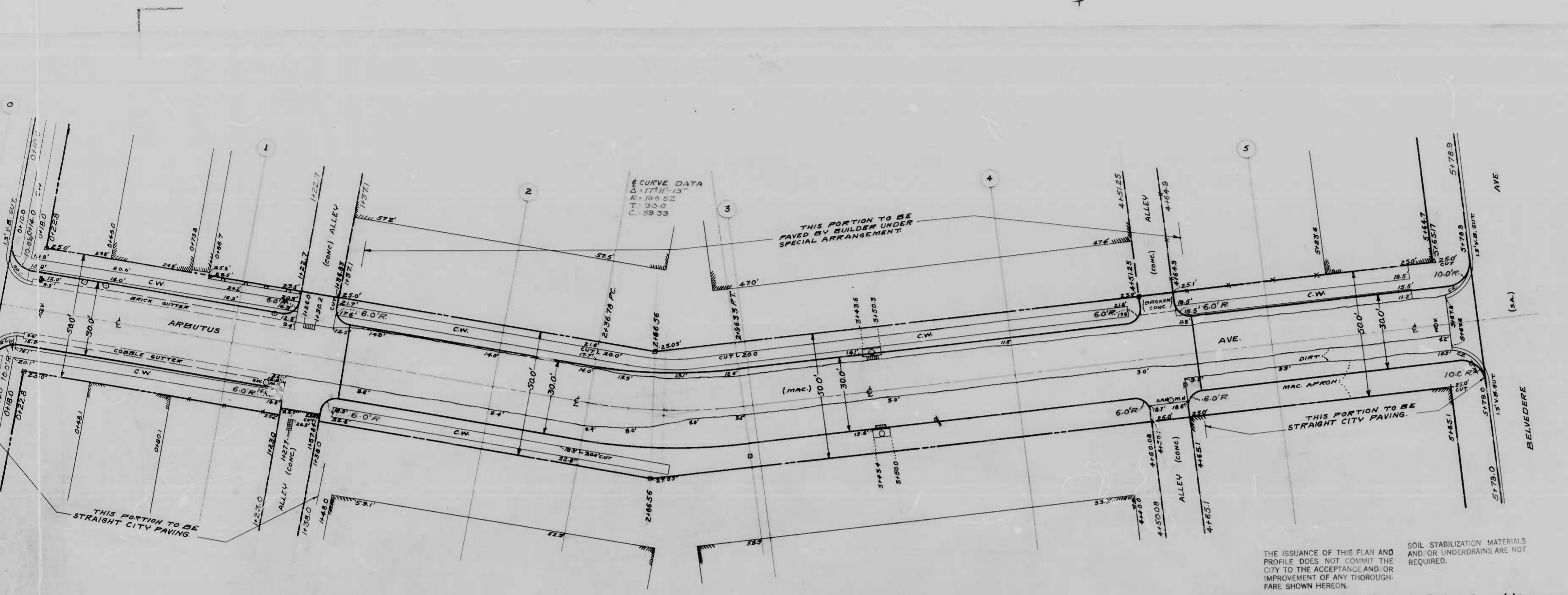
CITY OF BALTIMORE  
 DEPARTMENT OF PUBLIC WORKS  
 BUREAU OF HIGHWAYS  
 PLAN & PROFILE  
 ARBUTUS AVE - GARRISON AVE - BELVEDERE AVE  
 CONTRACT NO. 876  
 SCALES: PLAN - 1"=20.0'  
 PROFILE - HOR. - 1"=30.0'  
 PROFILE - VER. - 1"=2.0'  
 APPROVED:  
 Henry Weisberg  
 ASSOCIATE ENGINEER  
 APPROVED:  
 Edward ...  
 ENGINEER OF SURVEYS



DRAWN BY: R.E. JONES  
 EXAMINED BY: *John H. Jones*

CITY OF  
 DEPARTMENT OF  
 BUREAU OF  
 CONT. #  
 ARBUTUS  
 GARRISON AVE. - A  
 AL. E. BELVEDERE - B  
 CEM. CONC. PAV. - C  
 PARAMOUNT CONST. CO.  
 STARTED 3-26-48  
 SCALE 1"=20.0'

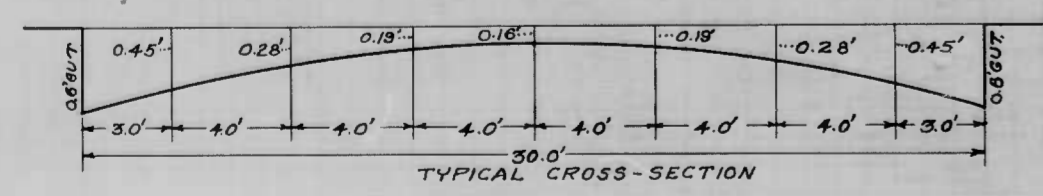
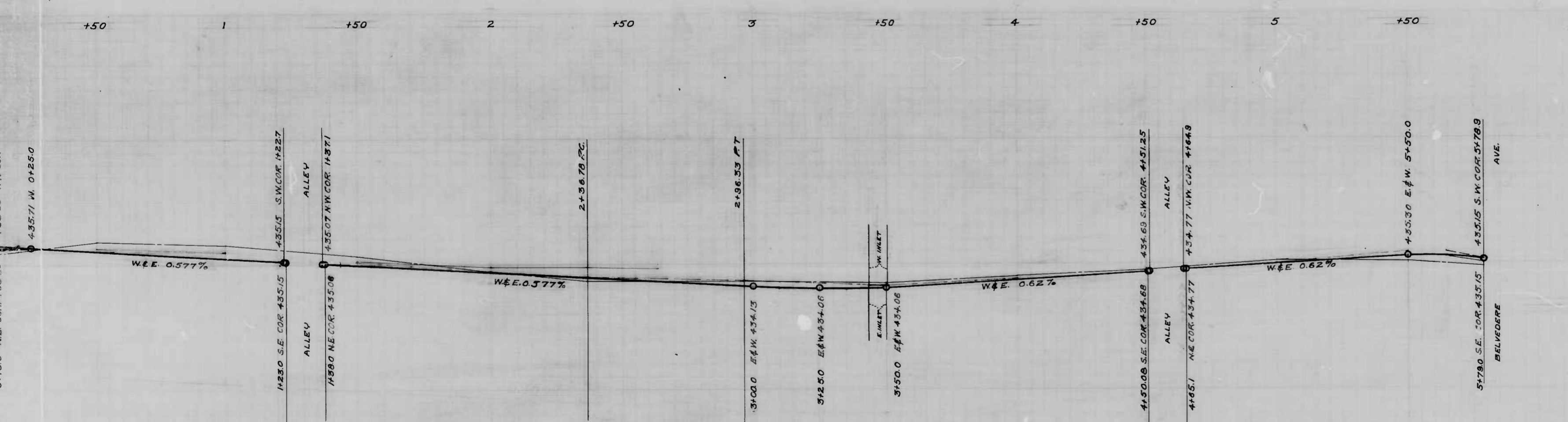




THE ISSUANCE OF THIS PLAN AND PROFILE DOES NOT COMMIT THE CITY TO THE ACCEPTANCE AND OR IMPROVEMENT OF ANY THROUGHFARE SHOWN HEREON.

SOIL STABILIZATION MATERIALS AND OR UNDERDRAINS ARE NOT REQUIRED.

To be Cement Concrete Paving Seven (7) inches thick.



CITY OF BALTIMORE  
DEPARTMENT OF PUBLIC WORKS  
BUREAU OF HIGHWAYS  
PLAN & PROFILE  
ARBUTUS AVE - GARRISON AVE - BELVEDERE AVE.  
CONTRACT NO 876

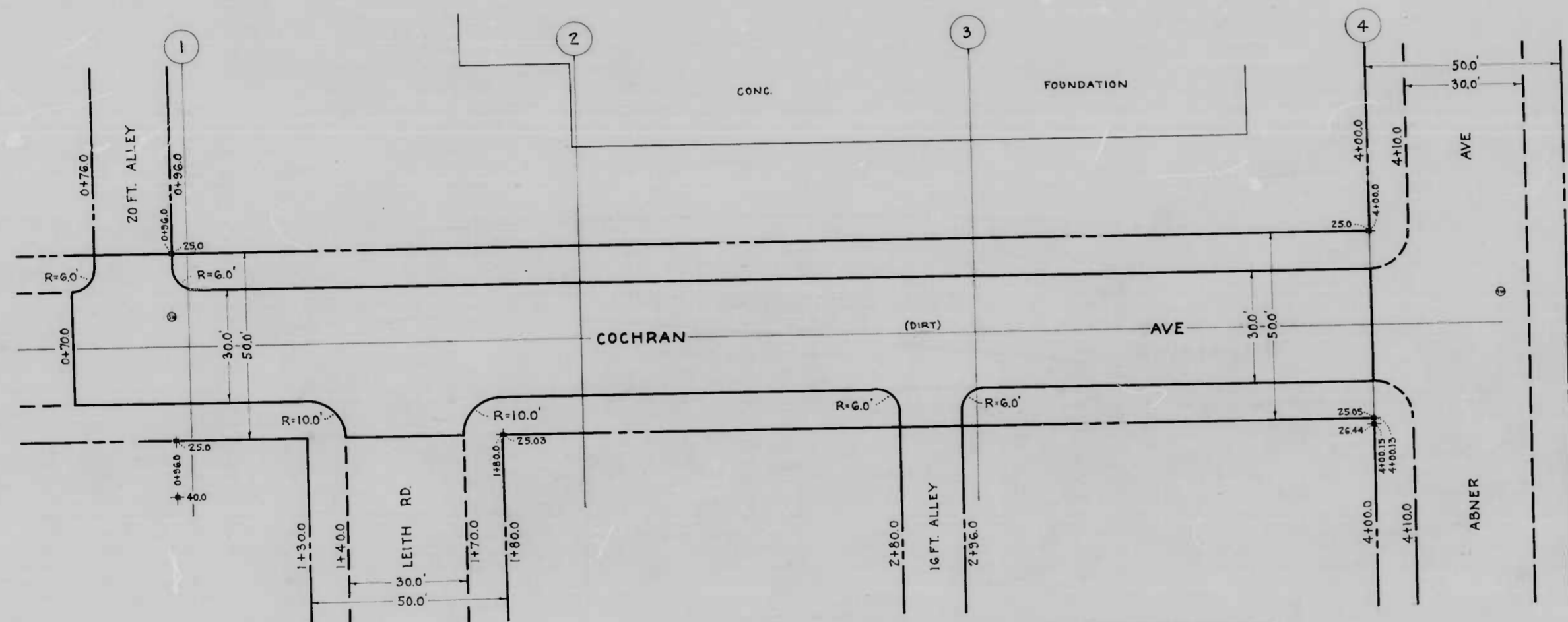
SCALES: PLAN: 1"=20.0' AUGUST 24, 1948  
PROFILE: HOR: 1"=20.0' BOOK NO X240  
VER: 1"=2.0'

APPROVED: *Henry Weisberg* ASSOCIATE ENGINEER  
APPROVED: *James S. Moxley* HIGHWAYS ENGINEER

*Edward Maclean* ENGINEER OF SURVEYS  
*P. D. Holland* DIRECTOR OF PUBLIC WORKS







CITY OF BALTIMORE  
 DEPARTMENT OF PUBLIC WORKS  
 BUREAU OF HIGHWAYS  
 PLAN OF  
 COCHRAN AVE  
 20 FT. ALLEY 304 FT. WEST OF ABNER AVE - ABNER AVE.  
 SCALE - 1" = 20'  
 CONT. No. 876  
 BOOK - C 876  
 DATE - JULY 7, 1948

APPROVED  
*Henry Weisberg*  
 ASSOCIATE ENGINEER

APPROVED  
*John M. ...*  
 HIGHWAYS ENGINEER

APPROVED  
*Edward Hester*  
 ENGINEER OF SURVEYS

APPROVED  
*P. L. Hollands*  
 DIRECTOR OF PUBLIC WORKS

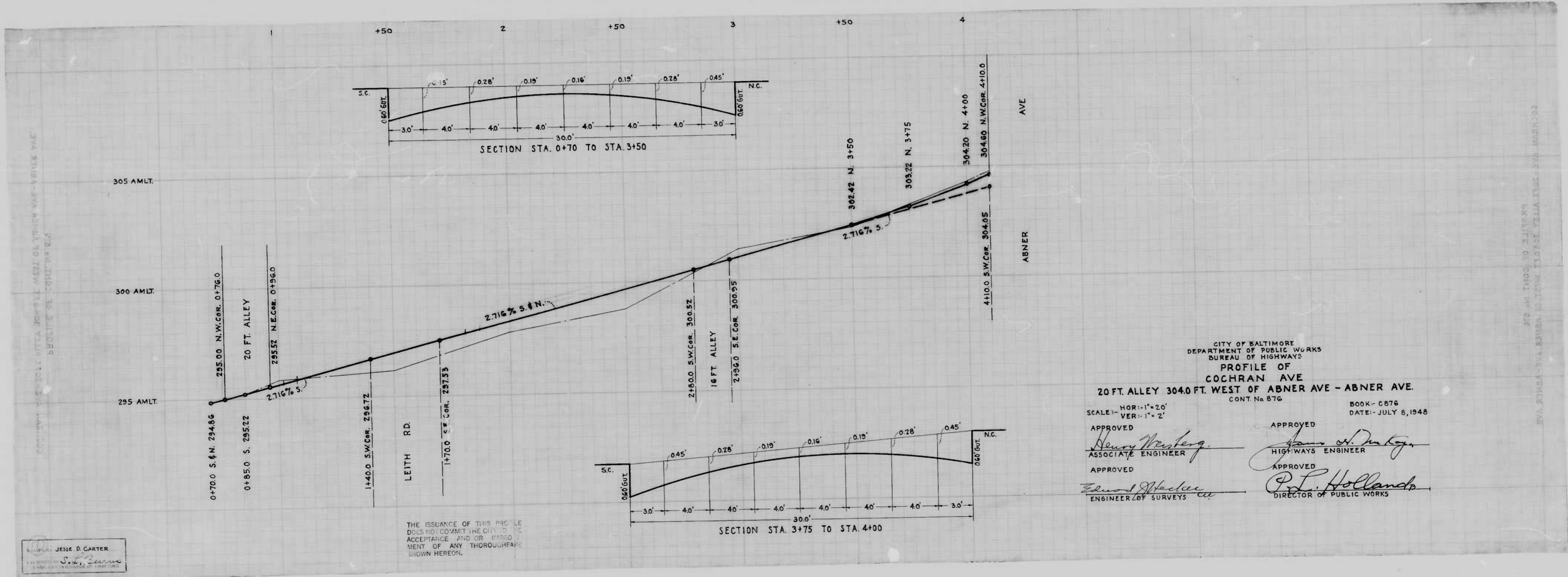
SOIL STABILIZATION MATERIALS AND OR UNDERDRAINS ARE NOT REQUIRED.

THE ISSUANCE OF THIS PLAN DOES NOT COMMIT THE CITY TO THE ACCEPTANCE AND OR IMPROVEMENT OF ANY THOROUGHFARE SHOWN HEREON.

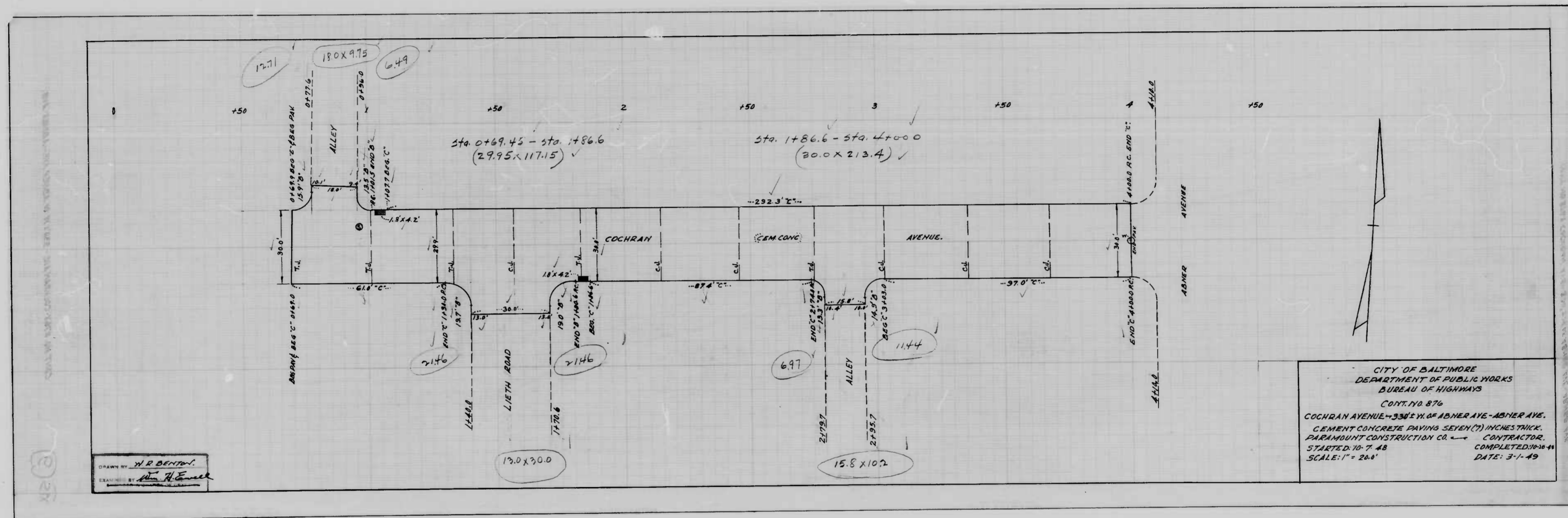
TO BE CEMENT CONCRETE PAVING 7" THICK

DESIGNED BY  
*Jesse D. Carter*  
 ENGINEER OF SURVEYS

COCHRAN AVE - 20 FT. ALLEY 304 FT. WEST OF ABNER AVE - ABNER AVE  
 BOOK - C 876  
 DATE - JULY 7, 1948





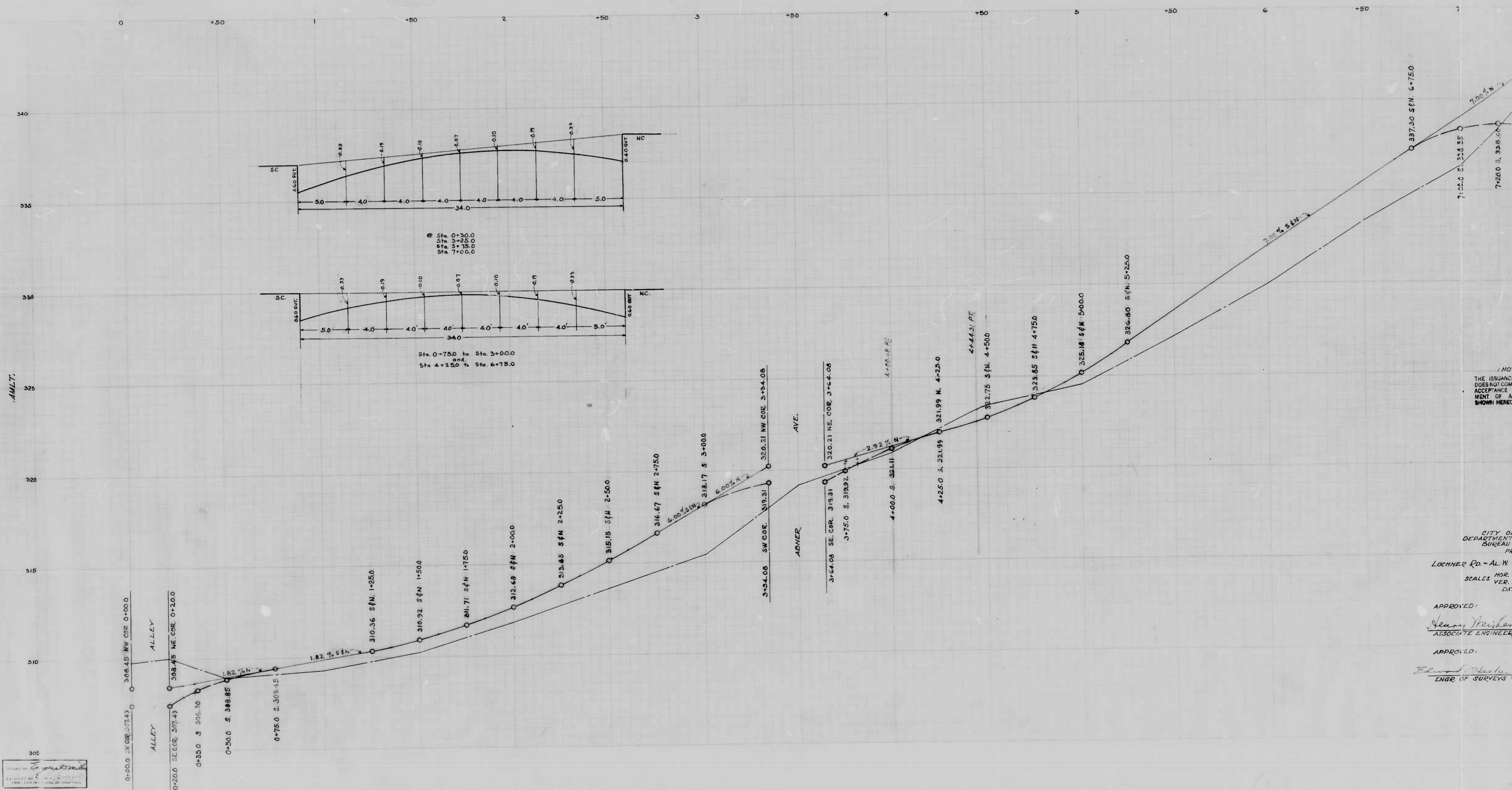


DRAWN BY: *H. R. BENTON*  
 EXAMINED BY: *H. H. HENNING*

CITY OF BALTIMORE  
 DEPARTMENT OF PUBLIC WORKS  
 BUREAU OF HIGHWAYS  
 CONT. NO. 876  
 COCHRAN AVENUE - 330' E. W. OF ABNER AVE - ABNER AVE.  
 CEMENT CONCRETE PAVING SEVEN (7) INCHES THICK.  
 PARAMOUNT CONSTRUCTION CO. CONTRACTOR.  
 STARTED 10-7-48 COMPLETED 10-10-48  
 SCALE: 1" = 20' DATE: 3-1-49







NOT  
THE ISSUANCE  
DOES NOT CONSTITUTE  
ACCEPTANCE OR  
WARRANTY OF ANY  
KIND BY THE  
BUREAU OF PUBLIC  
WORKS.

CITY OF  
DEPARTMENT OF  
BUREAU OF  
PUBLIC  
WORKS  
PROJECT  
LOCHNER RD. - AL. W. AVE.  
HOR. 12  
SCALES VER. 1" = 20'  
DATE

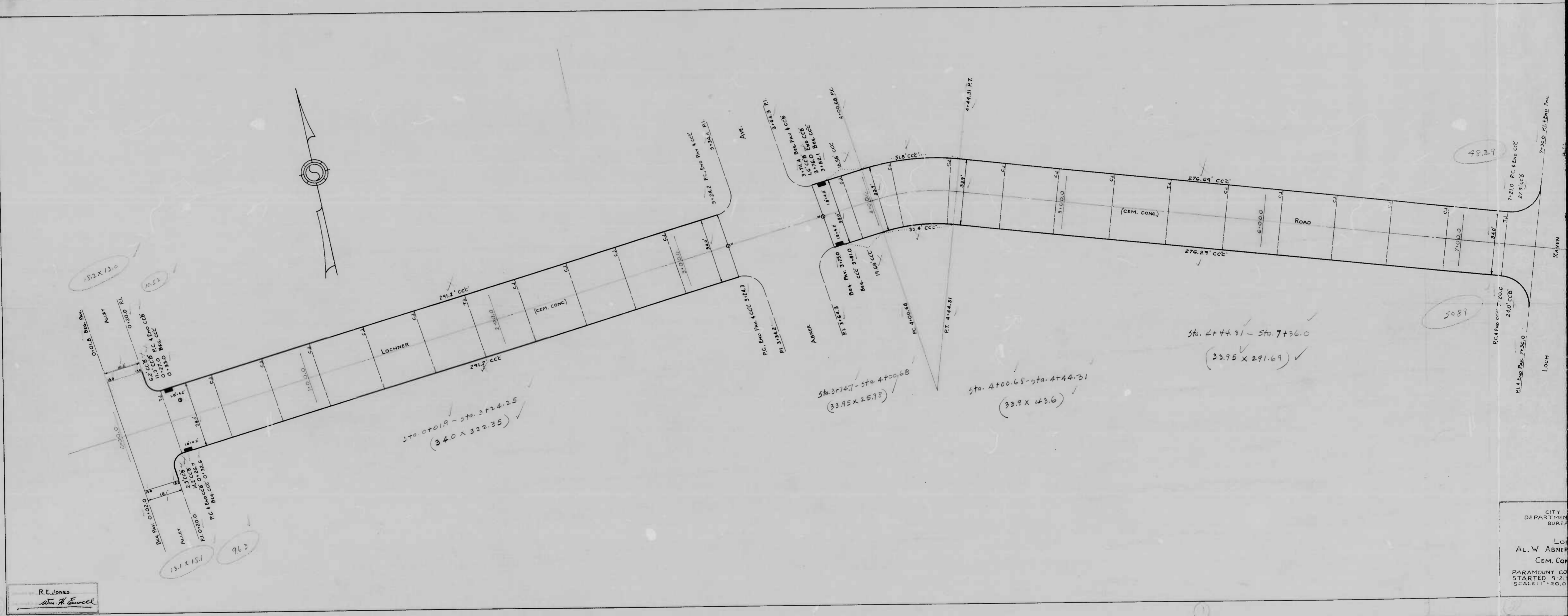
APPROVED:  
*Henry Weiskopf*  
ASSOCIATE ENGINEER

APPROVED:  
*Edward Weiskopf*  
ENGR. OF SURVEYS

DRAWN BY  
CHECKED BY  
DATE OF DRAFTING



REVISIONS 18" - 1/4" VERTICAL - 1/4" HORIZONTAL

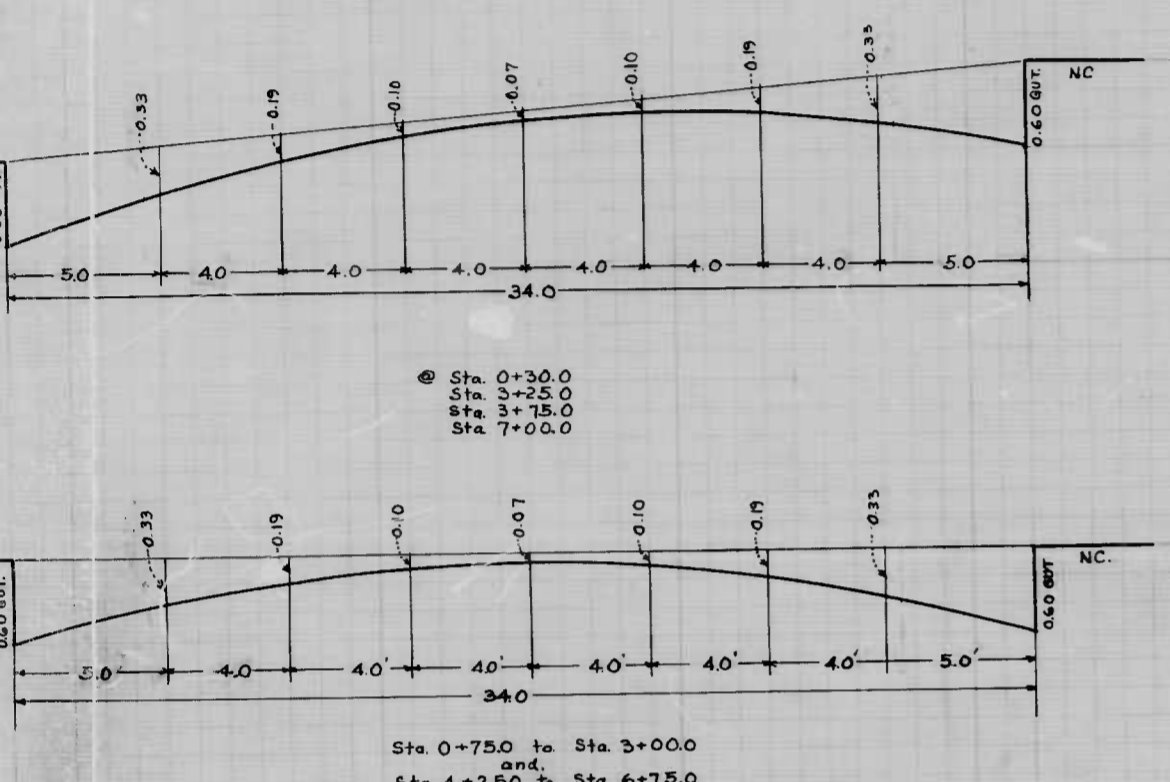
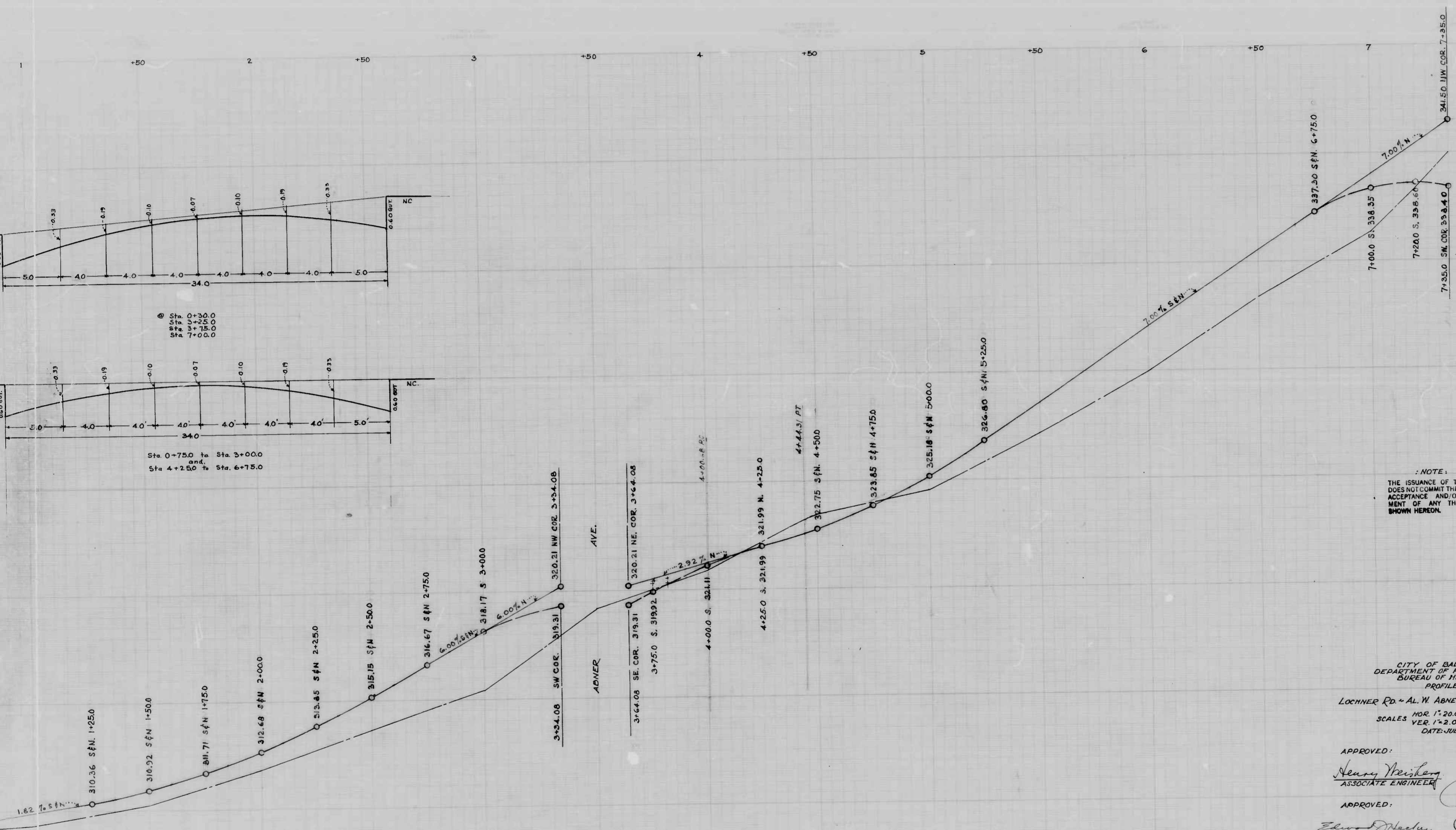


R.E. JONES  
Wm. H. Conwell

CITY DEPARTMENT BUREAU  
LO AL. W. ABNER  
CEM. CO.  
PARAMOUNT CO.  
STARTED 9-2-1920  
SCALE 1" = 20.0'







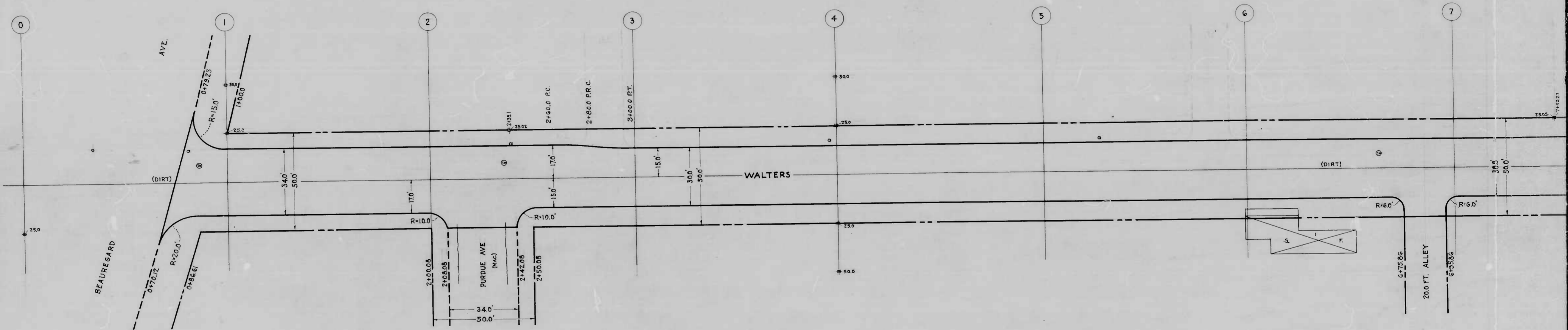
NOTE:  
 THE ISSUANCE OF THIS PROFILE  
 DOES NOT COMMIT THE CITY TO THE  
 ACCEPTANCE AND/OR IMPROVE-  
 MENT OF ANY THOROUGHFARE  
 SHOWN HEREON.

CITY OF BALTIMORE  
 DEPARTMENT OF PUBLIC WORKS  
 BUREAU OF HIGHWAYS  
 PROFILE  
 LOCHNER RD. - AL. W. ABNER AVE. - LOCH RAVEN BLVD.  
 HOR. 1"=20.0' CONT 876  
 VERT. 1"=2.0' BOOK C-876  
 DATE: JULY 27, 1948

APPROVED: *Henry Neilsen* ASSOCIATE ENGINEER  
 APPROVED: *John A. Neely* HIGHWAYS ENGINEER  
 APPROVED: *Elwood Macken* ENGR OF SURVEYS  
 APPROVED: *P. L. Hollands* DIRECTOR OF PUBLIC WORKS







THE SERVICE OF THIS PLAN DOES NOT COMMIT THE CITY TO THE ACCEPTANCE AND OR IMPROVEMENT OF ANY THOROUGHFARE SHOWN HEREON.

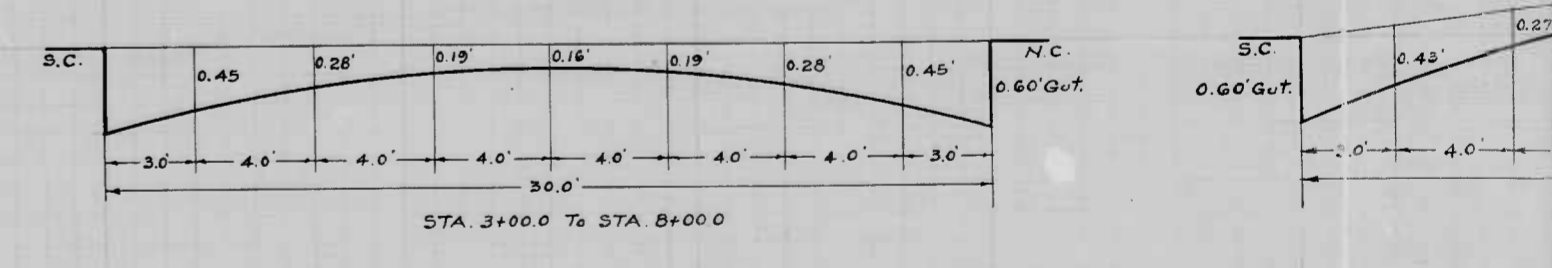
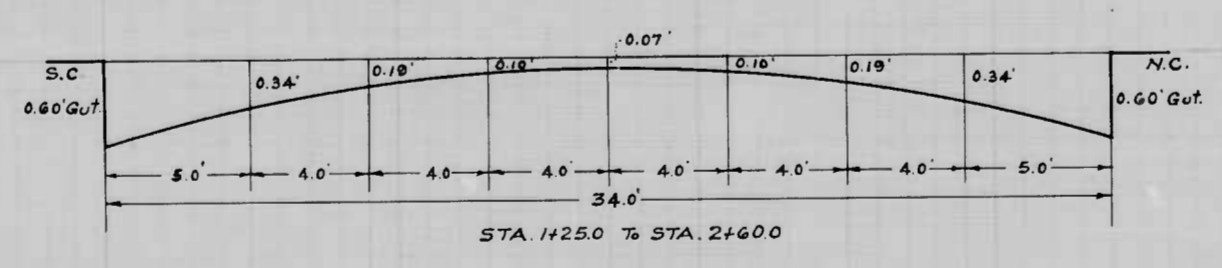
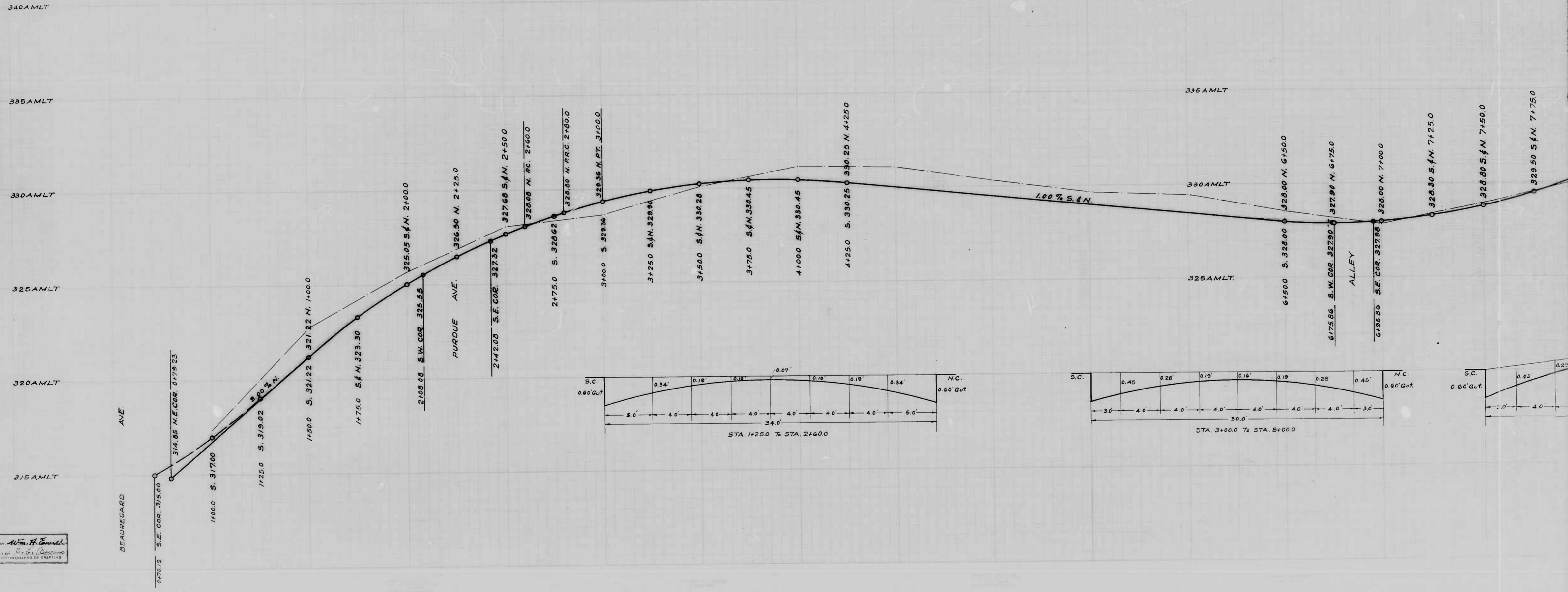
SOIL STABILIZATION MATERIALS AND OR UNDERDRAINS ARE NOT REQUIRED.

TO BE CEMENT CONCRETE PAVING 7" THICK

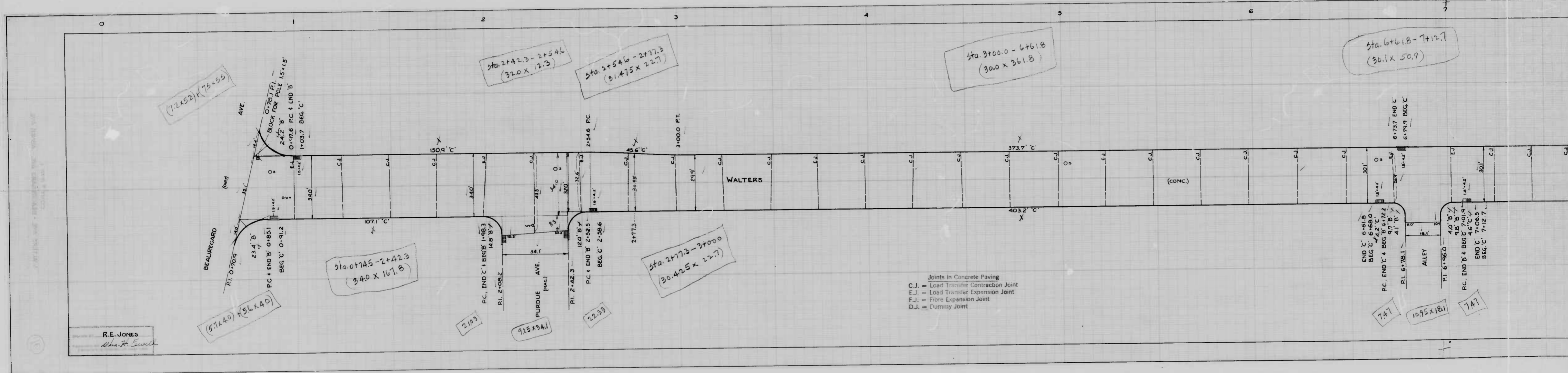
DESIGNED BY JESSE D. CARTER  
 DRAWN BY J. S. Carter  
 ENGINEER IN CHARGE OF DESIGN



1 +50 2 +50 3 +50 4 +50 5 +50 6 +50 7 +50



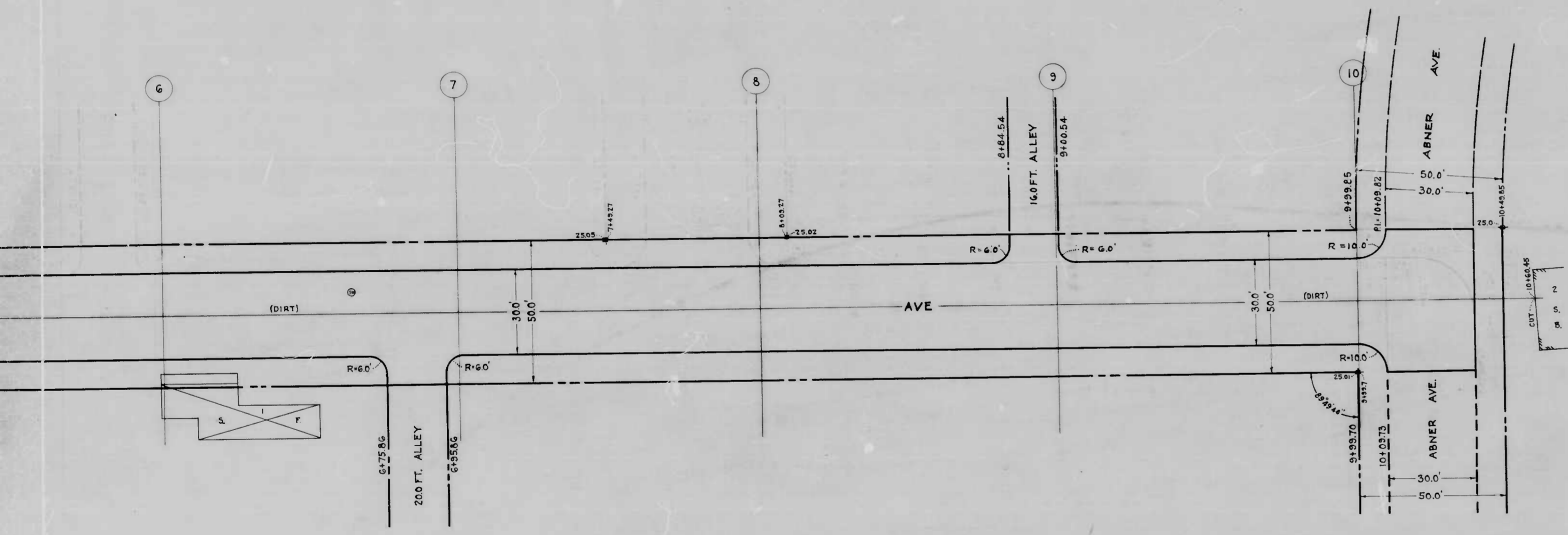
DRAWN BY *Wm. H. Emsel*  
 EXAMINED BY *C. S. ...*  
 ENGINEER IN CHARGE OF DESIGN



Joints in Concrete Paving  
 C.J. = Load Transfer Contraction Joint  
 E.J. = Load Transfer Expansion Joint  
 F.J. = Fire Expansion Joint  
 D.J. = Dummy Joint

R.E. JONES  
 Wm. F. Swell





CITY OF BALTIMORE  
 DEPARTMENT OF PUBLIC WORKS  
 BUREAU OF HIGHWAYS  
 PLAN OF  
**WALTERS AVE - BEAUREGARD AVE - ABNER AVE**  
 SCALE: 1" = 20'  
 CONT. No. 876  
 BOOK: C876  
 OCT. 8, 1948

APPROVED  
*Henry Weisberg*  
 ASSOCIATE ENGINEER

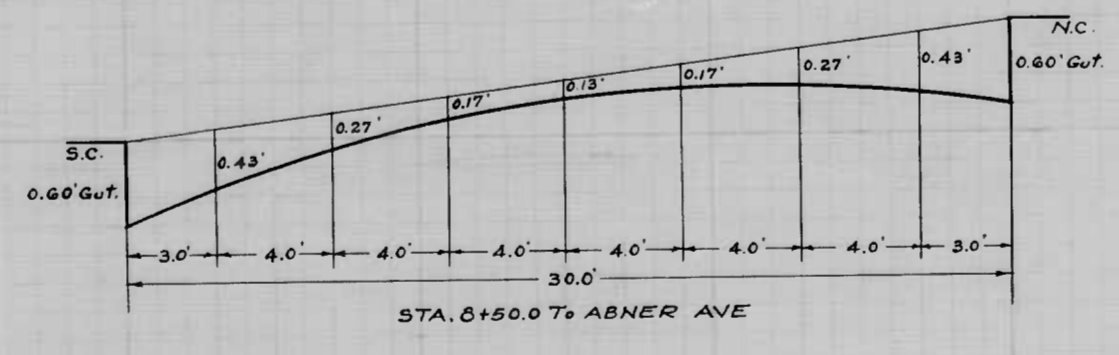
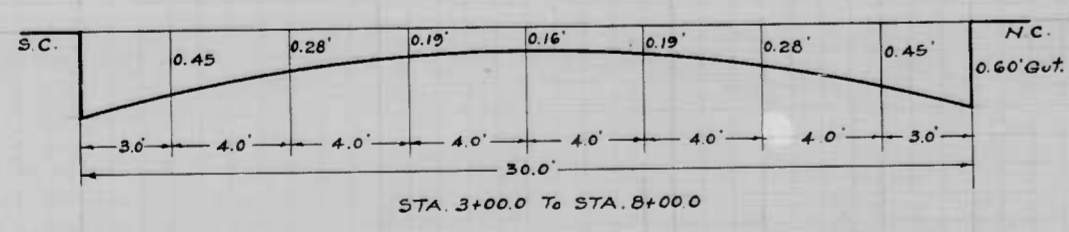
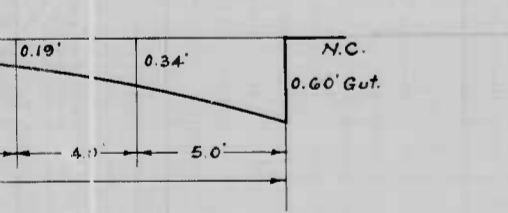
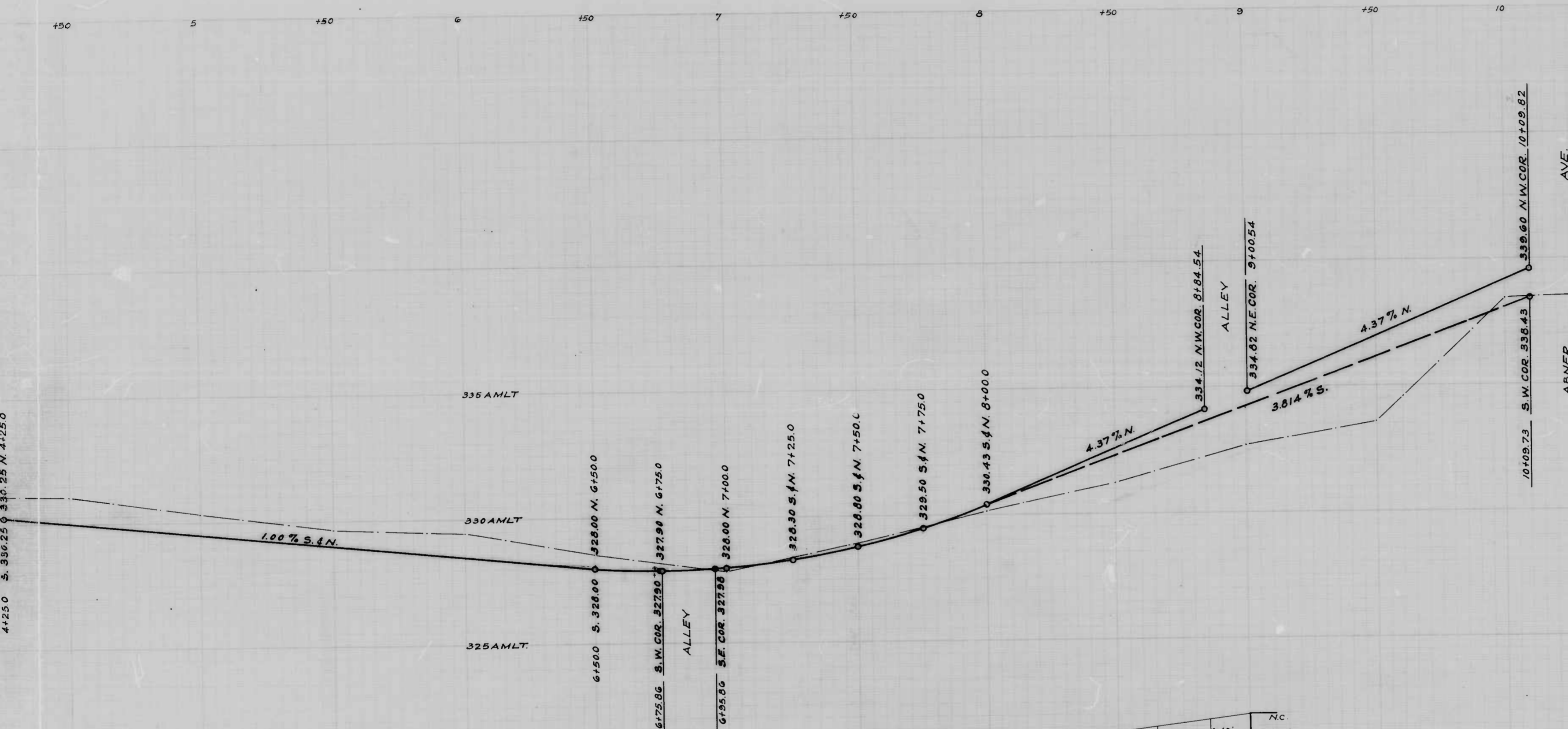
APPROVED  
*James D. ...*  
 HIGHWAYS ENGINEER

APPROVED  
*Edward ...*  
 ENGINEER OF SURVEYS

APPROVED  
*P. L. Hollander*  
 DIRECTOR OF PUBLIC WORKS

TO BE CEMENT CONCRETE PAVING 7" THICK

WALTERS AVE - BEAUREGARD AVE - ABNER AVE  
 PLAN OF CONT. NO. 876



THE ISSUANCE OF THIS PROFILE DOES NOT COMMIT THE CITY TO THE ACCEPTANCE AND OR IMPROVEMENT OF ANY THOROUGHFARE SHOWN HEREON.

CITY OF BALTIMORE  
 DEPARTMENT OF PUBLIC WORKS  
 BUREAU OF HIGHWAYS  
 PROFILE OF  
 WALTERS AVE - BEAUREGARD AVE - ABNER AVE.  
 BOOK N° C-876  
 SCALE: HOR: 1" = 20.0' DATE: OCT. 8, 1948.  
 VER: 1" = 2.0' CONT. N° 876

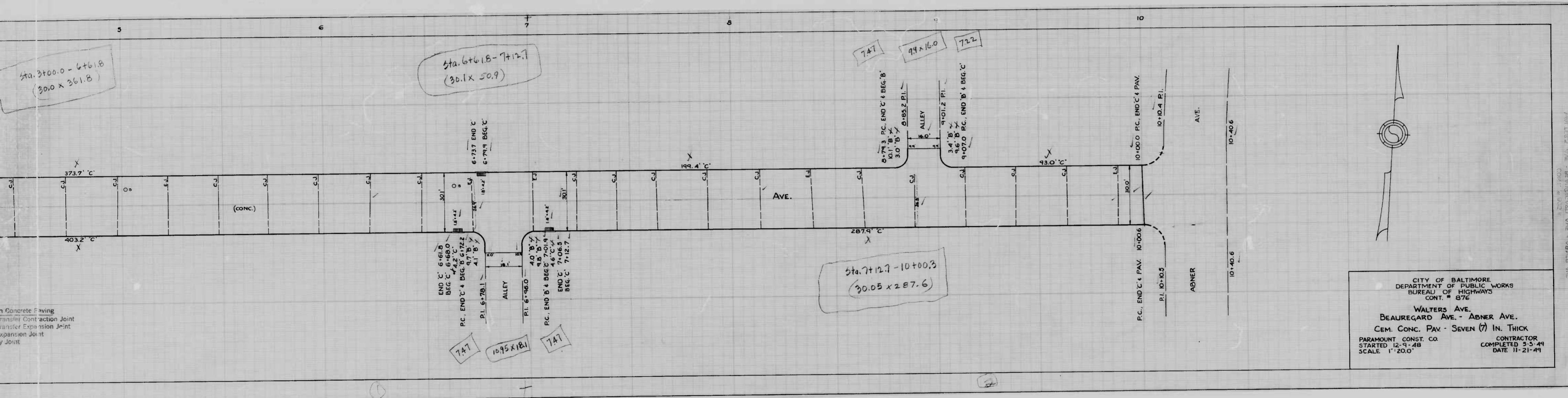
APPROVED  
*Henry Weisberg*  
 ASSOCIATE ENGINEER  
 APPROVED

APPROVED  
*James J. [Signature]*  
 HIGHWAYS ENGINEER  
 APPROVED

*Edward S. [Signature]*  
 ENGINEER OF SURVEYS

*P. L. Hollands*  
 DIRECTOR OF PUBLIC WORKS





CITY OF BALTIMORE  
DEPARTMENT OF PUBLIC WORKS  
BUREAU OF HIGHWAYS  
CONT. # 876

WALTERS AVE.  
BEAUREGARD AVE. - ABNER AVE.  
CEM. CONC. PAV. - SEVEN (7) IN. THICK

PARAMOUNT CONST. CO.  
STARTED 12-9-48  
SCALE 1"=200'

CONTRACTOR  
COMPLETED 3-5-49  
DATE 11-21-49