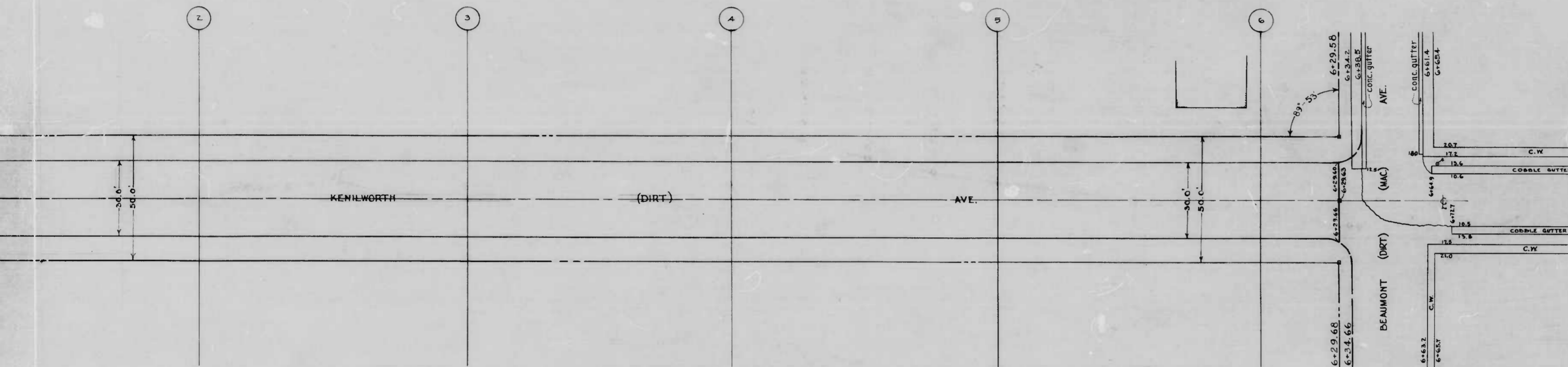


869

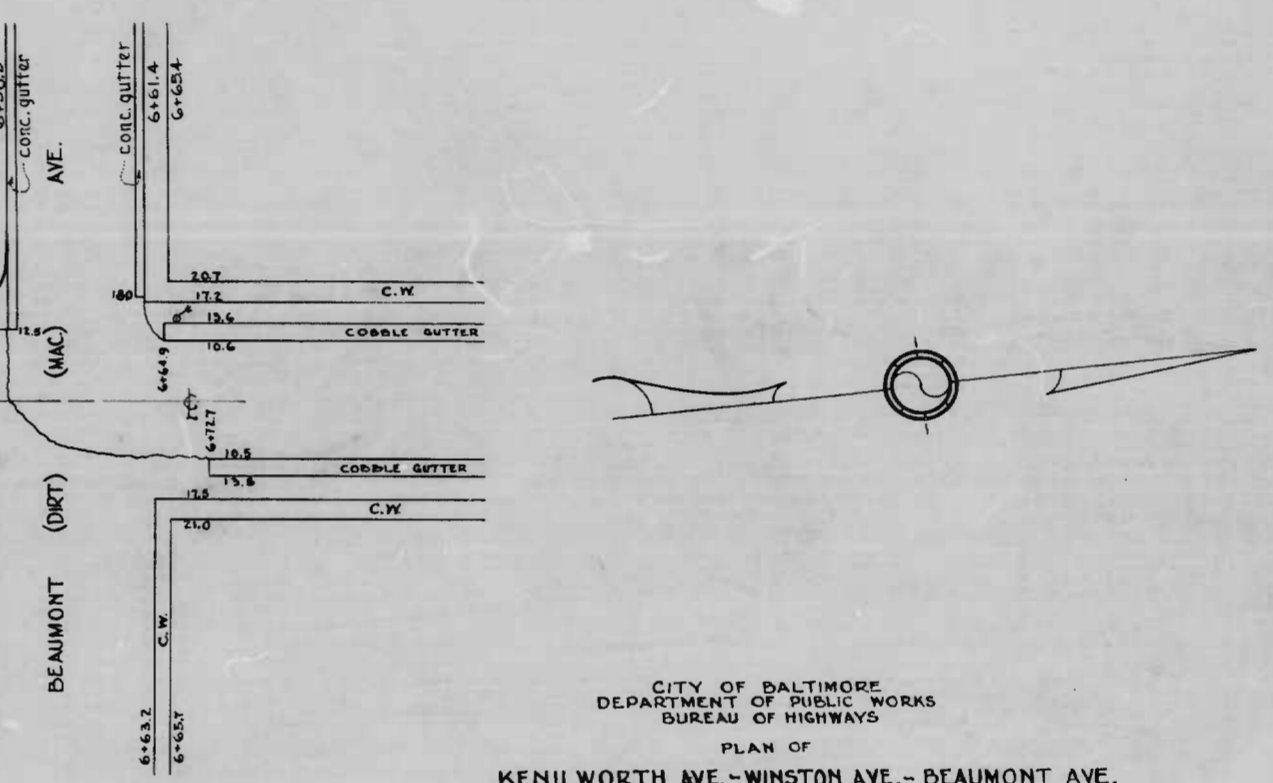
RATIO - 24

1



-NOTES-

THE ISSUANCE OF THIS PLAN DOES NOT COMMIT THE CITY TO THE ACCEPTANCE AND/OR IMPROVEMENT OF ANY THOROUGHFARE SHOWN HEREON. TO BE CEMENT CONCRETE PAVING 7" INCHES THICK. SOIL STABILIZATION MATERIAL AND/OR UNDERDRAIN ARE NOT REQUIRED.



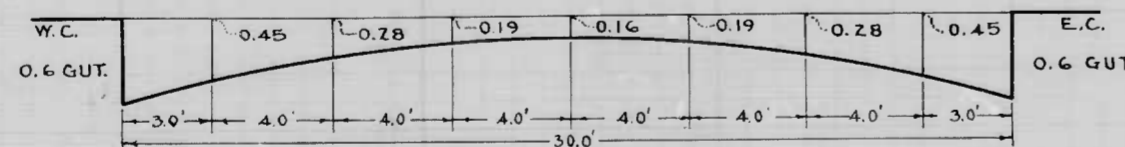
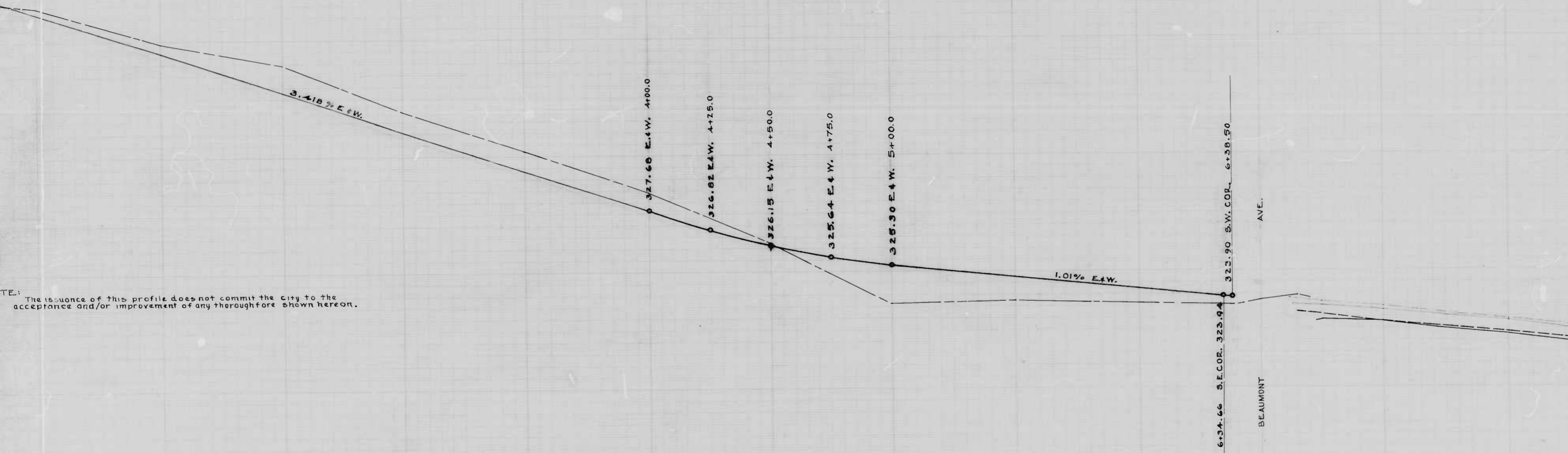
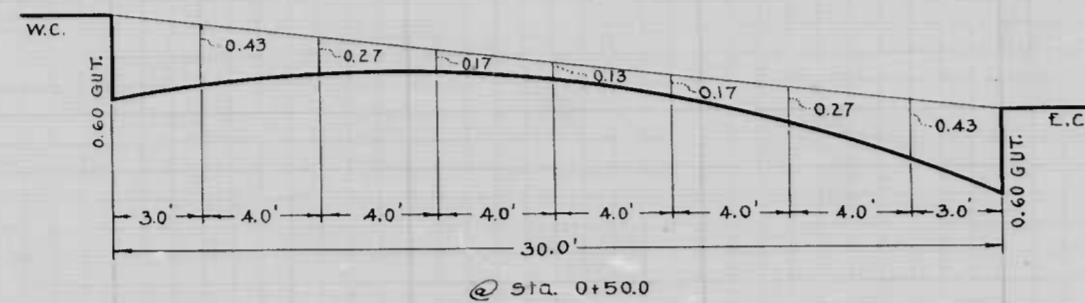
CITY OF BALTIMORE
 DEPARTMENT OF PUBLIC WORKS
 BUREAU OF HIGHWAYS
 PLAN OF
 KENILWORTH AVE. - WINSTON AVE. - BEAUMONT AVE.
 Scale: 1" = 200' CONT. 869 Aug. 26, 1947
 Book X-212

APPROVED: *Henry Weisberg* ASSOCIATE ENGINEER
 APPROVED: *James A. Becking* HIGHWAYS ENGINEER
 APPROVED: *Edward J. Hedden* ENGINEER OF SURVEYS
 APPROVED: *Jack L. Smith* DIRECTOR OF PUBLIC WORKS

869

RATIO - 24

2



FROM STA. 1+00.0 TO BEAUMONT AVE.

NOTE: The issuance of this profile does not commit the City to the acceptance and/or improvement of any thoroughfare shown hereon.

CITY OF BALTIMORE.
 DEPARTMENT OF PUBLIC WORKS
 BUREAU OF HIGHWAYS
 PROFILE OF
 KENILWORTH AVE. - BEAUMONT AVE. - WINSTON AVE.
 CONT. NO 869
 SCALE - HOR: 1" = 20.0' BOOK NO X 212
 VER: 1" = 2.0' SEPTEMBER 7, 1947

APPROVED:
Henry Weisberg
 ASSOCIATE ENGINEER

APPROVED:
James H. May
 HIGHWAYS ENGINEER

APPROVED:
Edward M. ...
 ENGR. OF SURVEYS

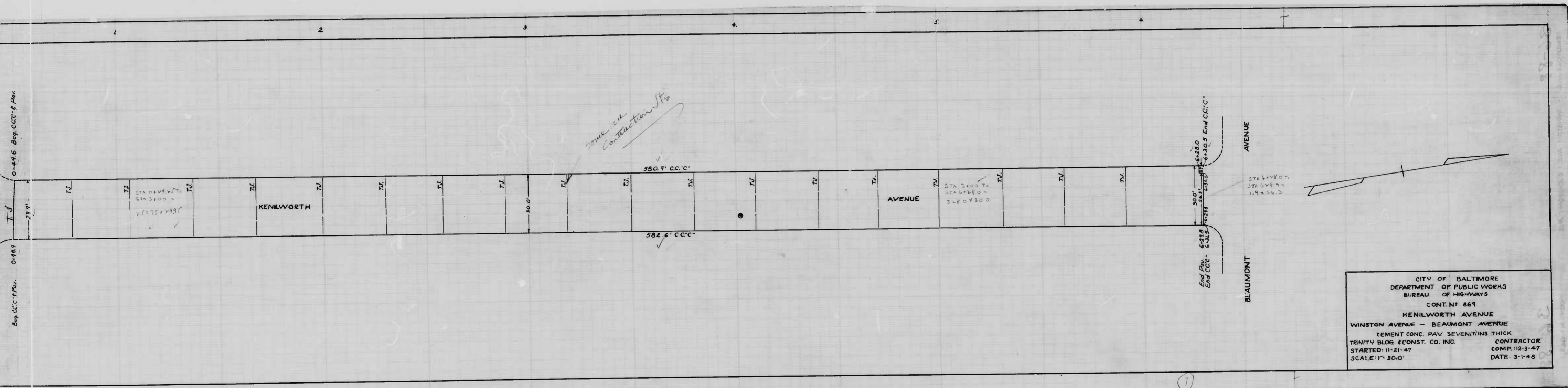
APPROVED:
Jack P. ...
 DIRECTOR OF PUBLIC WORKS

010

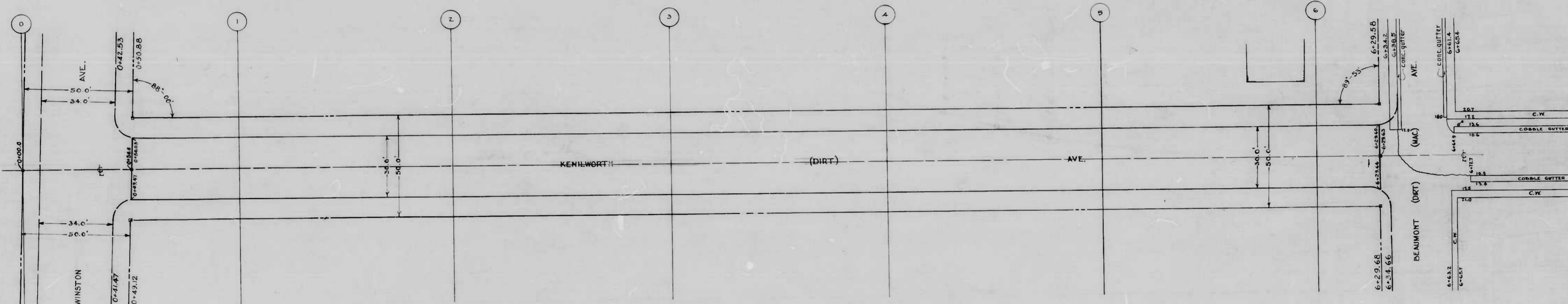
869

RATIO - 24

3



CITY OF BALTIMORE
 DEPARTMENT OF PUBLIC WORKS
 BUREAU OF HIGHWAYS
 CONT. NO. 869
 KENILWORTH AVENUE
 WINSTON AVENUE - BEAUMONT AVENUE
 CEMENT CONC. PAV. SEVEN (7) IN. THICK
 TRINITY BLDG. CONST. CO. INC. CONTRACTOR
 STARTED 11-21-47 COMP. 12-3-47
 SCALE 1" = 20.0' DATE 3-1-48



-NOTES-

THE ISSUANCE OF THIS PLAN DOES NOT COMMIT THE CITY TO THE ACCEPTANCE AND/OR IMPROVEMENT OF ANY THOROUGHFARE SHOWN HEREON. TO BE CEMENT CONCRETE PAVING 7" INCHES THICK. SOIL STABILIZATION MATERIAL AND/OR UNDERDRAIN ARE NOT REQUIRED.

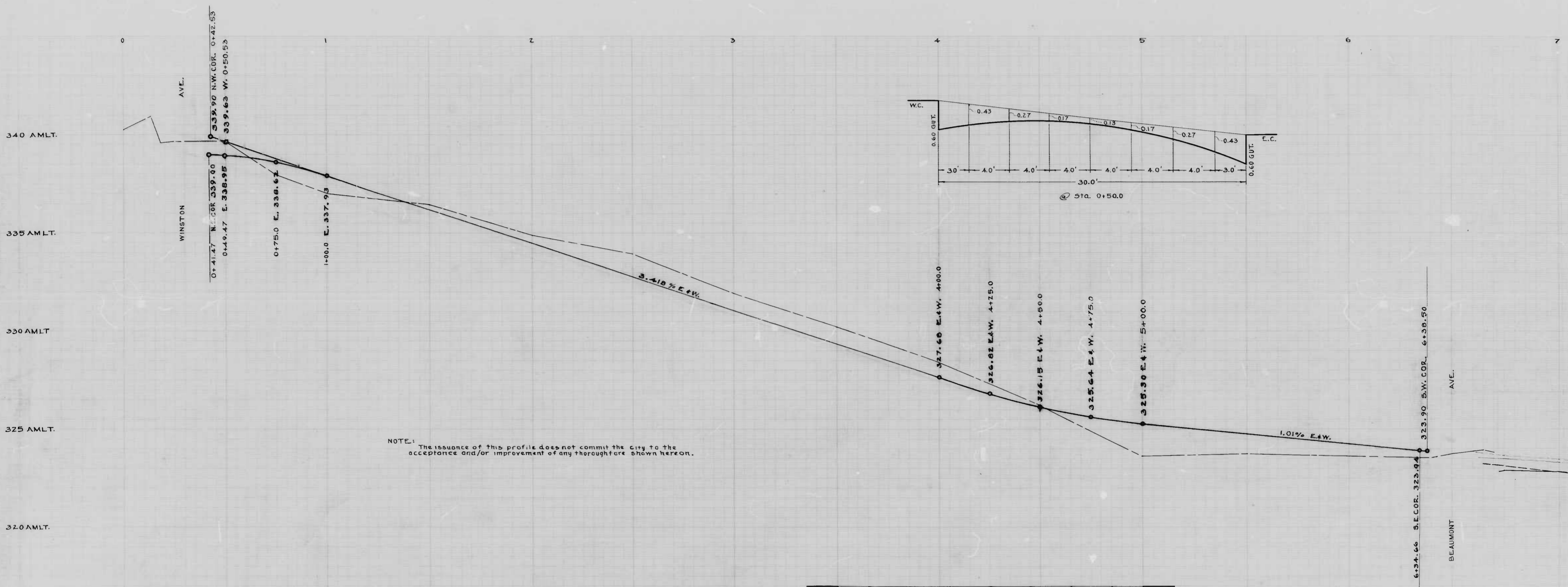
CITY OF BALTIMORE
DEPARTMENT OF PUBLIC WORKS
BUREAU OF HIGHWAYS
PLAN OF
KENILWORTH AVE. - WINSTON AVE. -
SHEET 869
BOOK X-212

APPROVED:
Henry Weisberg
ASSOCIATE ENGINEER

APPROVED:
Edward Hecker
ENGINEER OF SURVEY

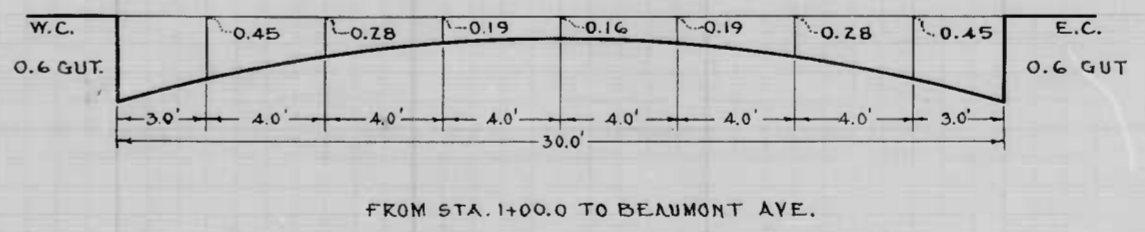
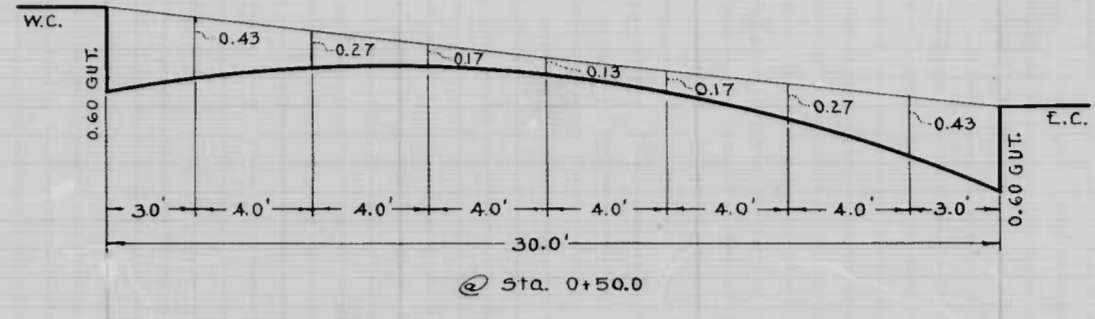
DRAWN BY: *RJW & EDM.*
EXAMINED BY: *[Signature]*
NO. 100 IN CHANGE OF DRAWING

869



NOTE: The issuance of this profile does not commit the city to the acceptance and/or improvement of any thoroughfare shown hereon.

DRAWN BY: *S. J. Winkler*
 CHECKED BY: *S. J. Winkler*
 REVISIONS IN SQUARES OF 201720



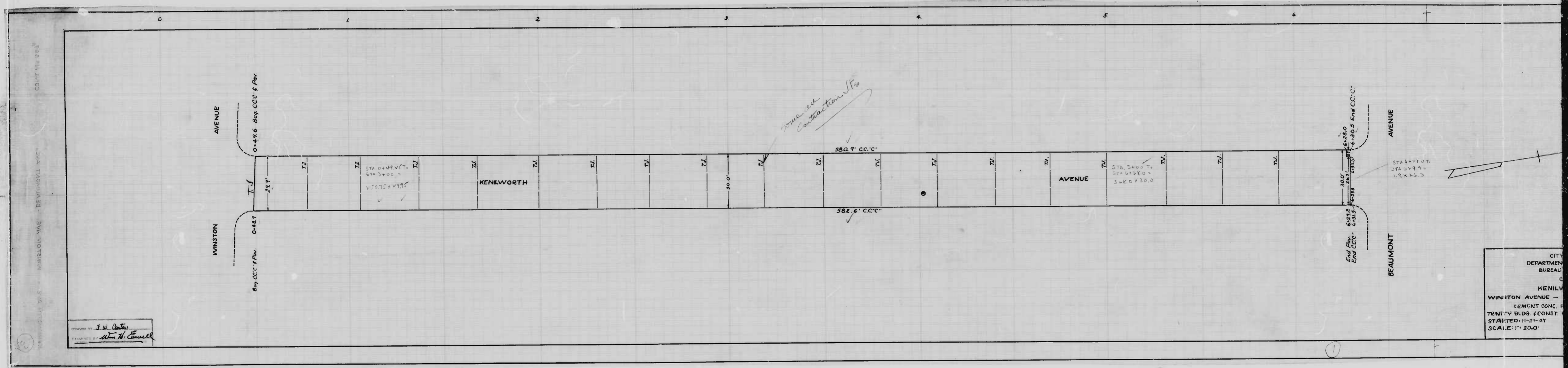
KENTON COUNTY ENGINEERING DEPARTMENT

KENILWORTH

869

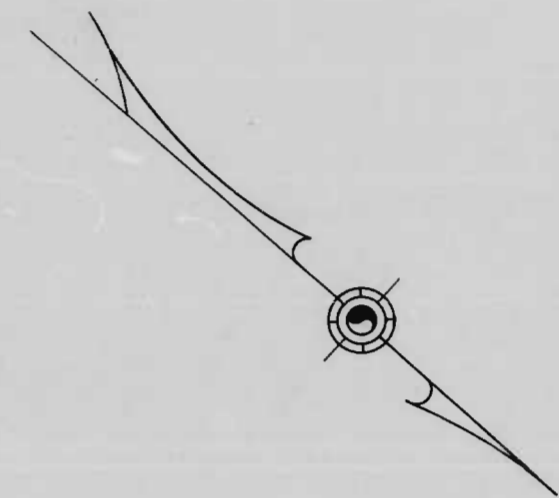
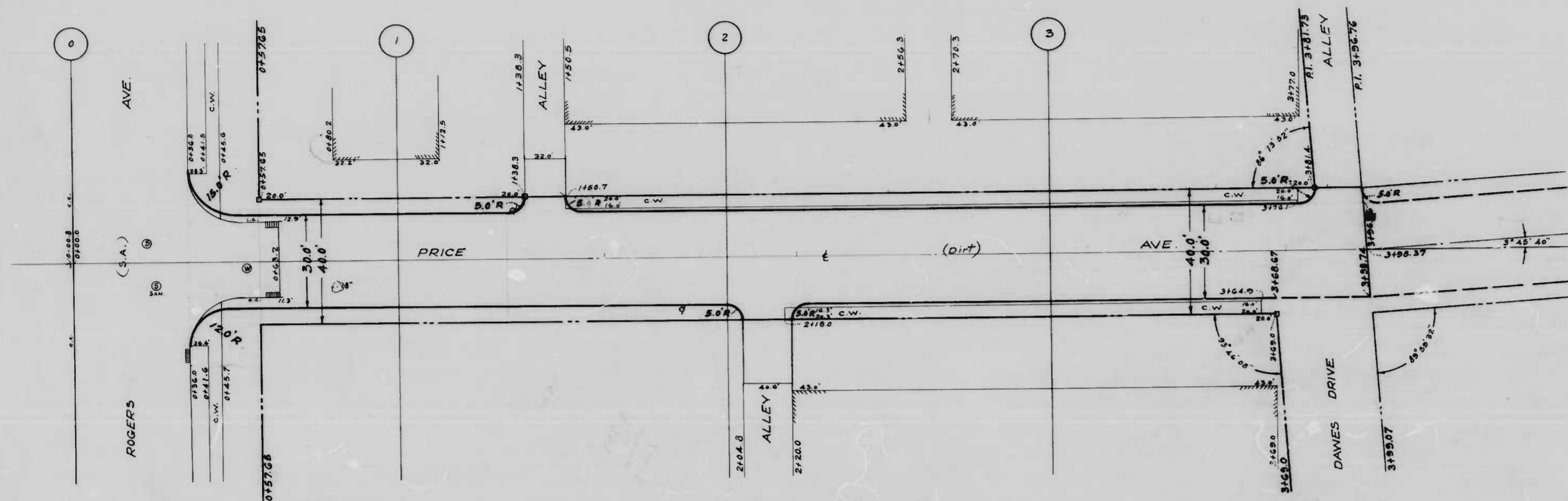
RATIO - 24

3

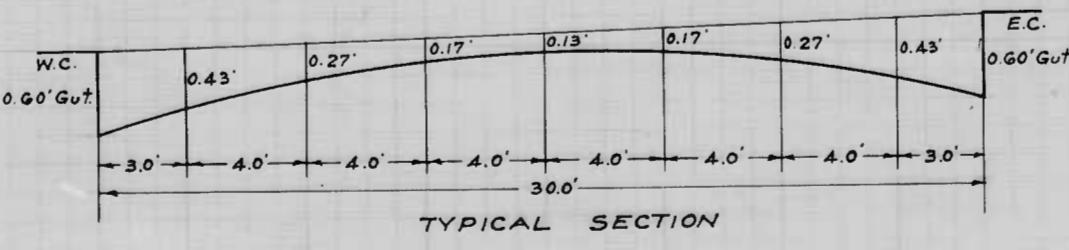
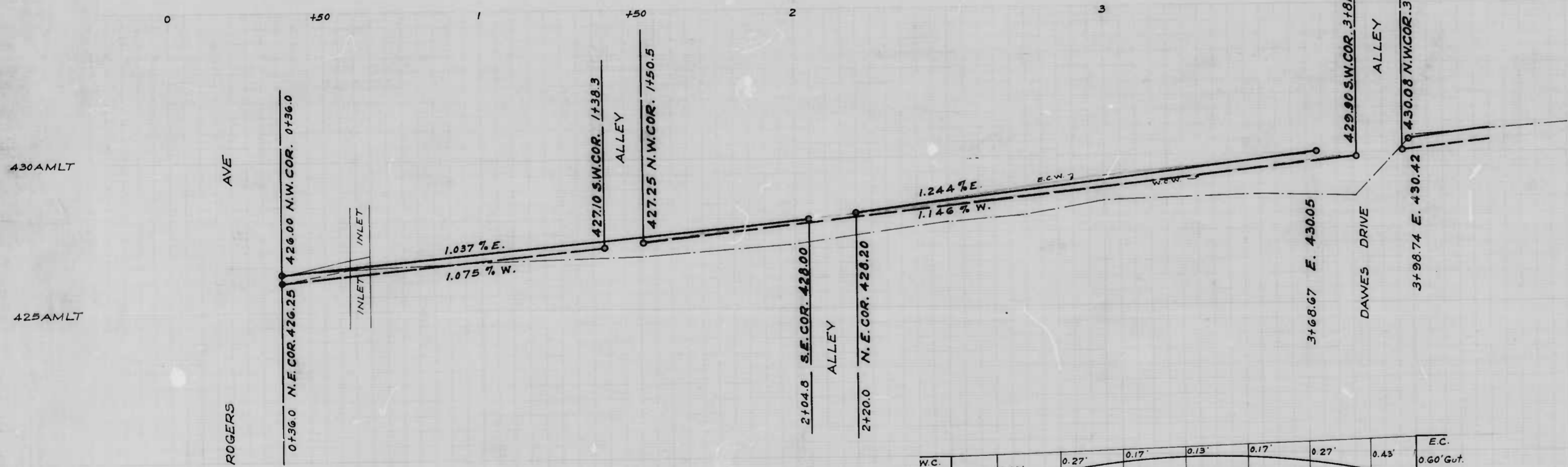


DRAWN BY: J. W. Carter
 EXAMINED BY: Wm. H. Conwell

CITY OF KENILWORTH
 DEPARTMENT OF PUBLIC WORKS
 BUREAU OF HIGHWAYS
 KENILWORTH AVENUE -
 CEMENT CONC.
 TRAFFY BLOC (CONST.
 STARTED 11-21-47
 SCALE: 1" = 20.0'



NOTE
 The issuance of this Plan & Profile does not
 commit the City to the Acceptance and/or Improvement
 of any Thoroughfares shown herein.
 Soil Stabilization Materials and/or Underdrains
 are not required.



CITY OF BALTIMORE
 DEPARTMENT OF PUBLIC WORKS
 BUREAU OF HIGHWAYS
 PROFILE OF
 PRICE AVE - ROGERS AVE - DAVES DRIVE
 Profile: Hor: 1"=20.0' Book No X-228
 Scale: Ver: 1"=2.0' Date: Oct. 3, 194
 Plan: 1"=20.0' Cont. No 869

APPROVED
 Henry Weisberg
 ASSOCIATE ENGINEER
 APPROVED

APPROVED
 James H. McLaughlin
 HIGHWAYS ENGINEER
 APPROVED

Edward H. Anderson
 ENGINEER OF SURVEYS

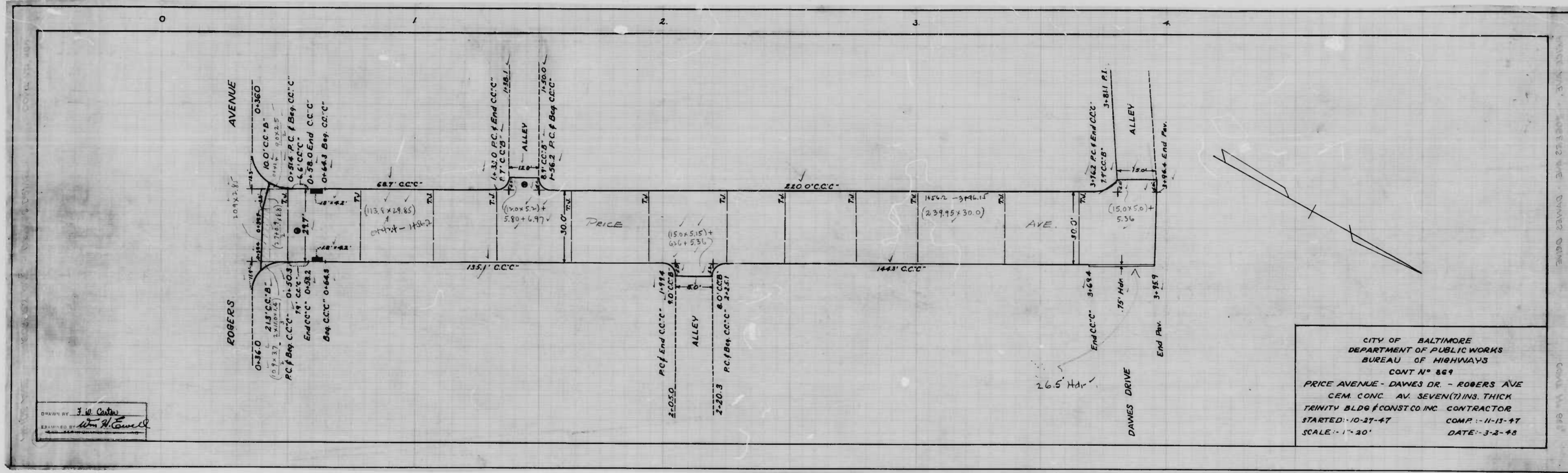
Richard D. Smith
 DIRECTOR OF PUBLIC WORKS

Drawn by
 Wm. H. Smith
 Checked by
 S. J. Burns

869

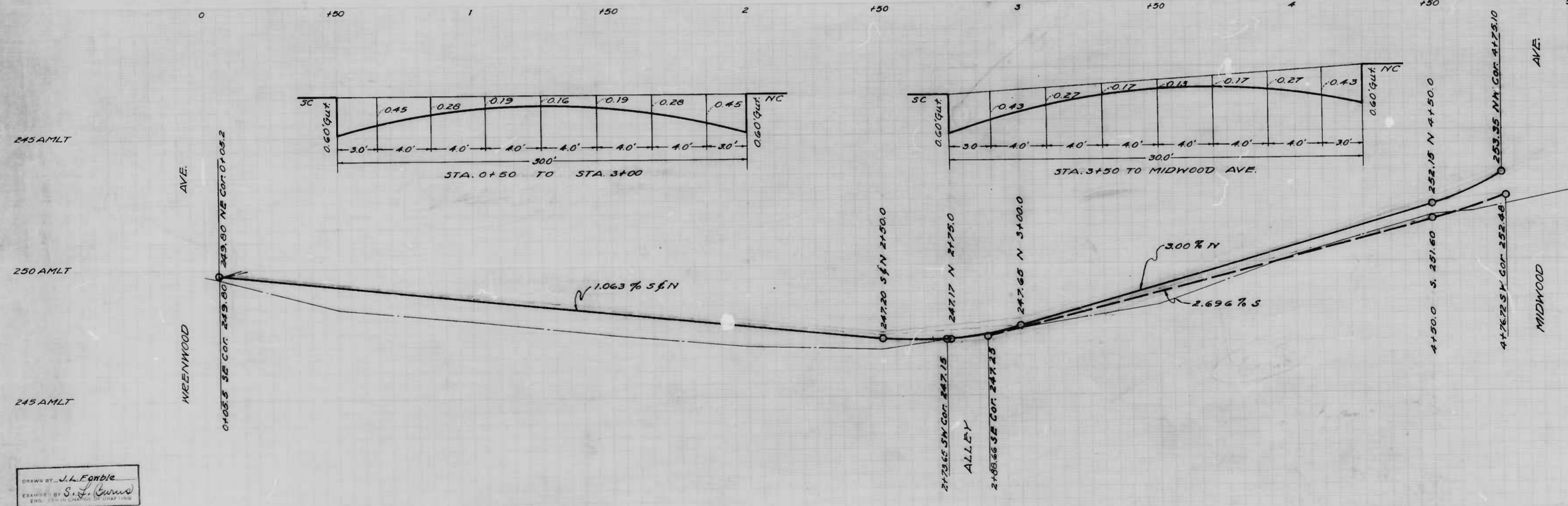
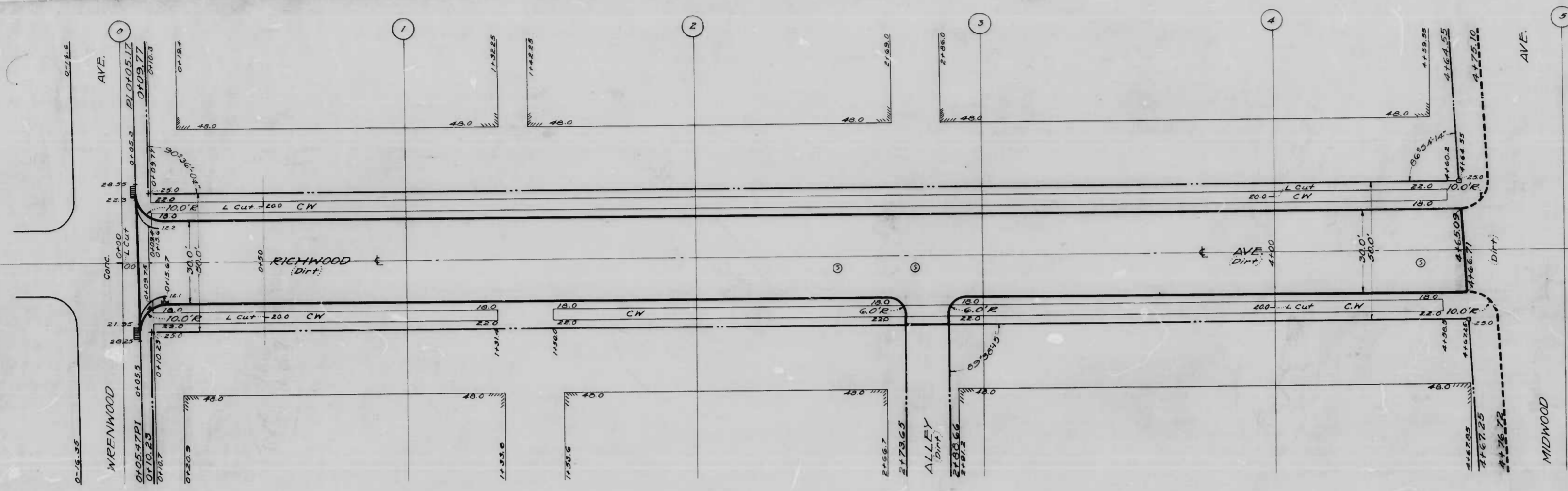
RATIO - 24

5



DRAWN BY *F. M. Carter*
 CHECKED BY *Wm. H. Carroll*

CITY OF BALTIMORE
 DEPARTMENT OF PUBLIC WORKS
 BUREAU OF HIGHWAYS
 CONT. N° 869
 PRICE AVENUE - DAWES DR. - ROGERS AVE
 CEM. CONC. AV. SEVEN (7) INS. THICK
 TRINITY BLDG. CONST. CO. INC. CONTRACTOR
 STARTED: 10-21-47 COMP. 11-15-47
 SCALE: 1" = 20' DATE: 3-2-48



CITY OF BALTIMORE
 DEPARTMENT OF PUBLIC WORKS
 BUREAU OF HIGHWAYS
 PLAN & PROFILE
 RICHWOOD AVE. - WRENWOOD AVE. - MIDWOOD AVE.
 CONT. NO. 869
 PLAN: 1"=20.0' BOOK NO. Misc. 67
 SCALE: PROFILE VER. 1"=2.0' DATE: 10-29-47
 APPROVED

H. Weichards, Jr.
 ASSOCIATE ENGINEER
 APPROVED

James J. ...
 HIGHWAYS ENGINEER
 APPROVED

Edward ...
 ENGINEER OF SURVEYS

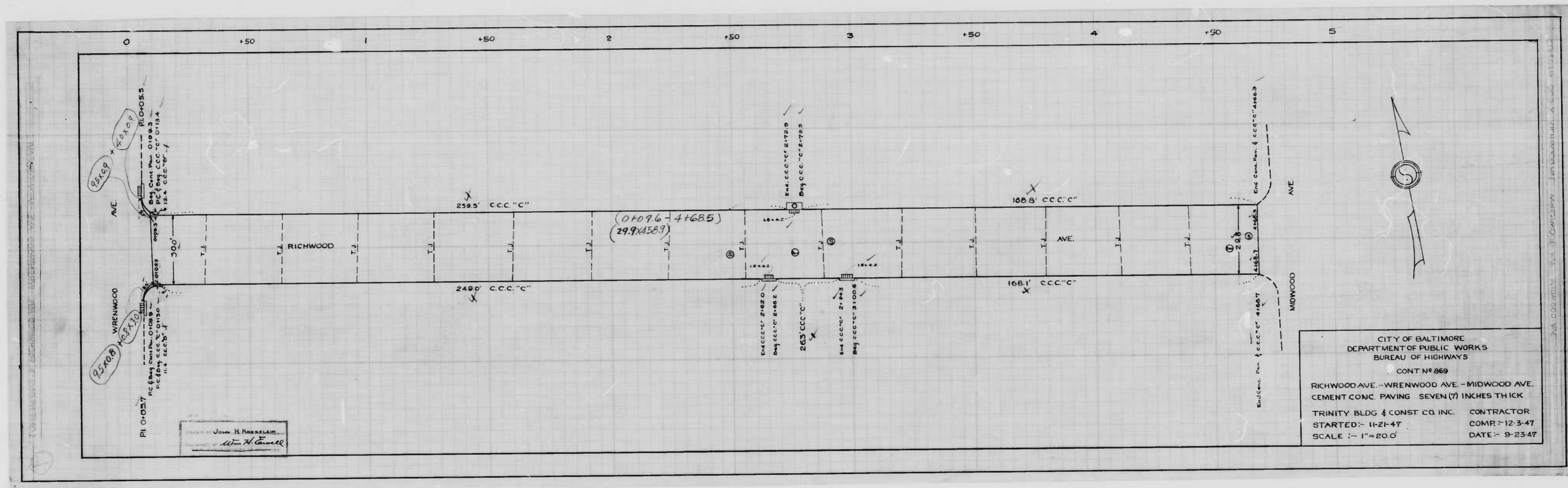
William ...
 DIRECTOR OF PUBLIC WORKS

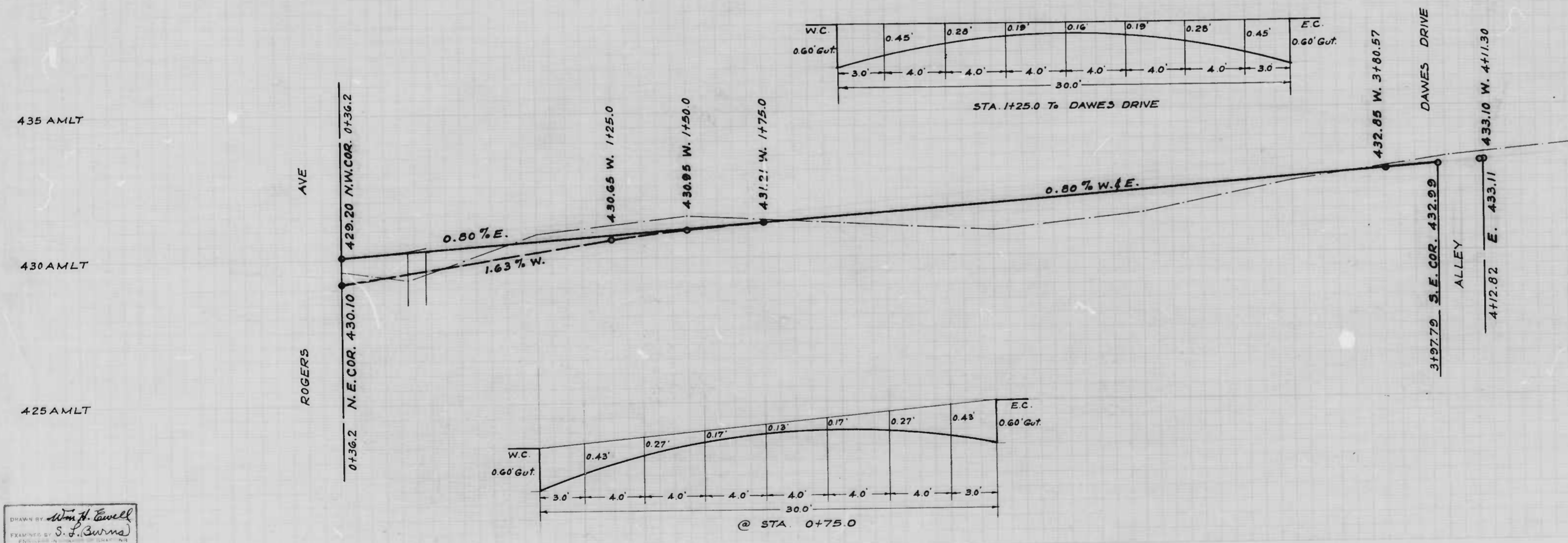
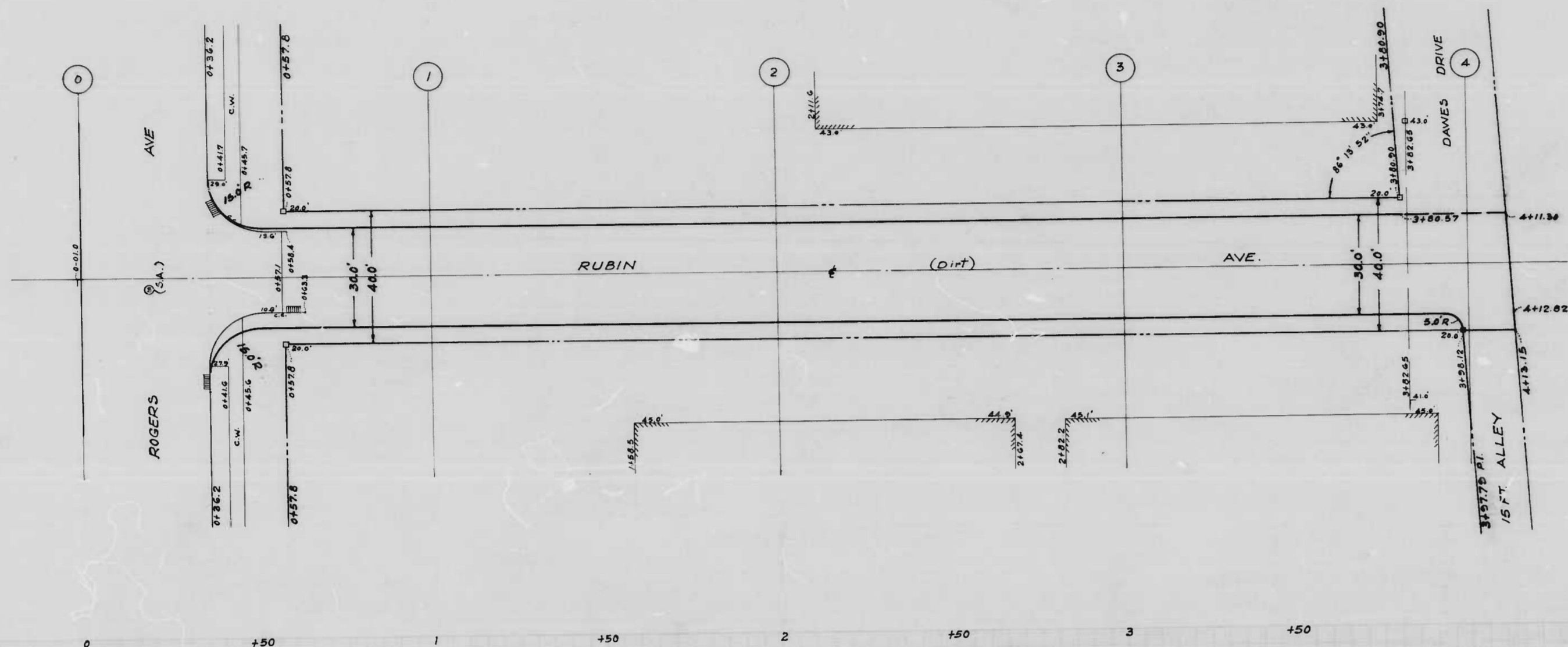
DRAWN BY: J.A. Forbie
 ENGINEER: S. Z. ...

869

RATIO - 24

7





NOTE:
 The issuance of this Plan & Profile does not commit the City to the Acceptance and/or Improvement of any Thoroughfares shown hereon.
 Soil Stabilization Materials and/or Underdrains are not required.

CITY OF BALTIMORE
 DEPARTMENT OF PUBLIC WORKS
 BUREAU OF HIGHWAYS
PLAN & PROFILE
 RUBIN AVE. - ROGERS AVE. - DAWES DRIVE
 Book N^o X-228
 Cont. N^o 869
 Date: Oct. 6, 1947.
 Scale: Prof.: 1" = 20.0'
 Ver.: 1" = 2.0'
 Plan: 1" = 20.0'

APPROVED
Henry Weisberg
 ASSOCIATE ENGINEER

APPROVED
James H. McLean
 HIGHWAYS ENGINEER

APPROVED
Edward H. Macken
 ENGINEER OF SURVEYS

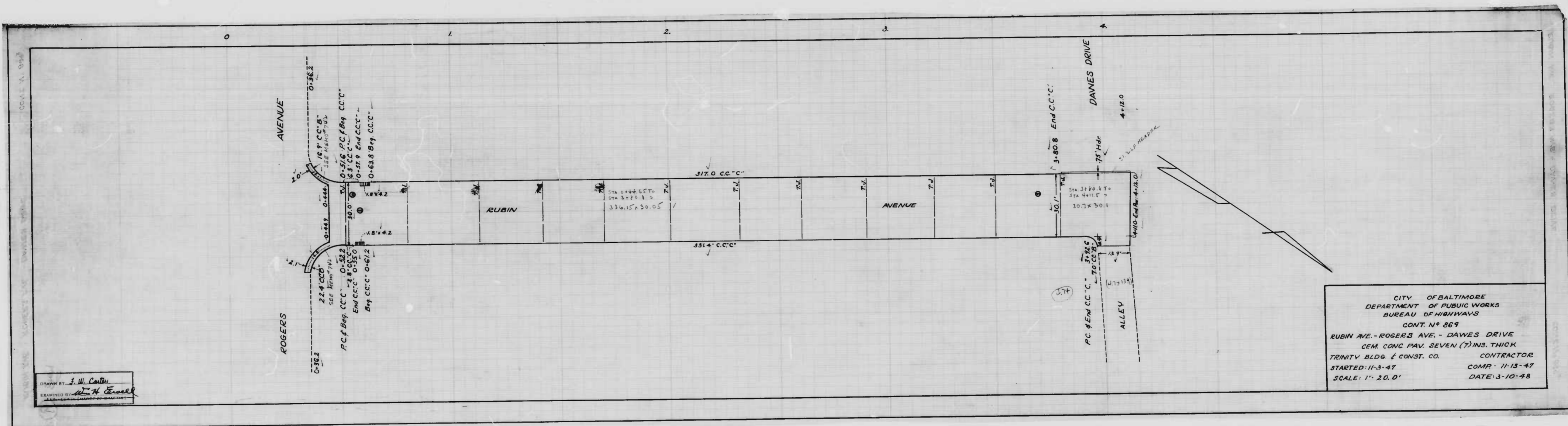
APPROVED
Robert L. Smith
 DIRECTOR OF PUBLIC WORKS

DRAWN BY *Wm. H. Lovell*
 EXAMINED BY *S. J. Burns*

869

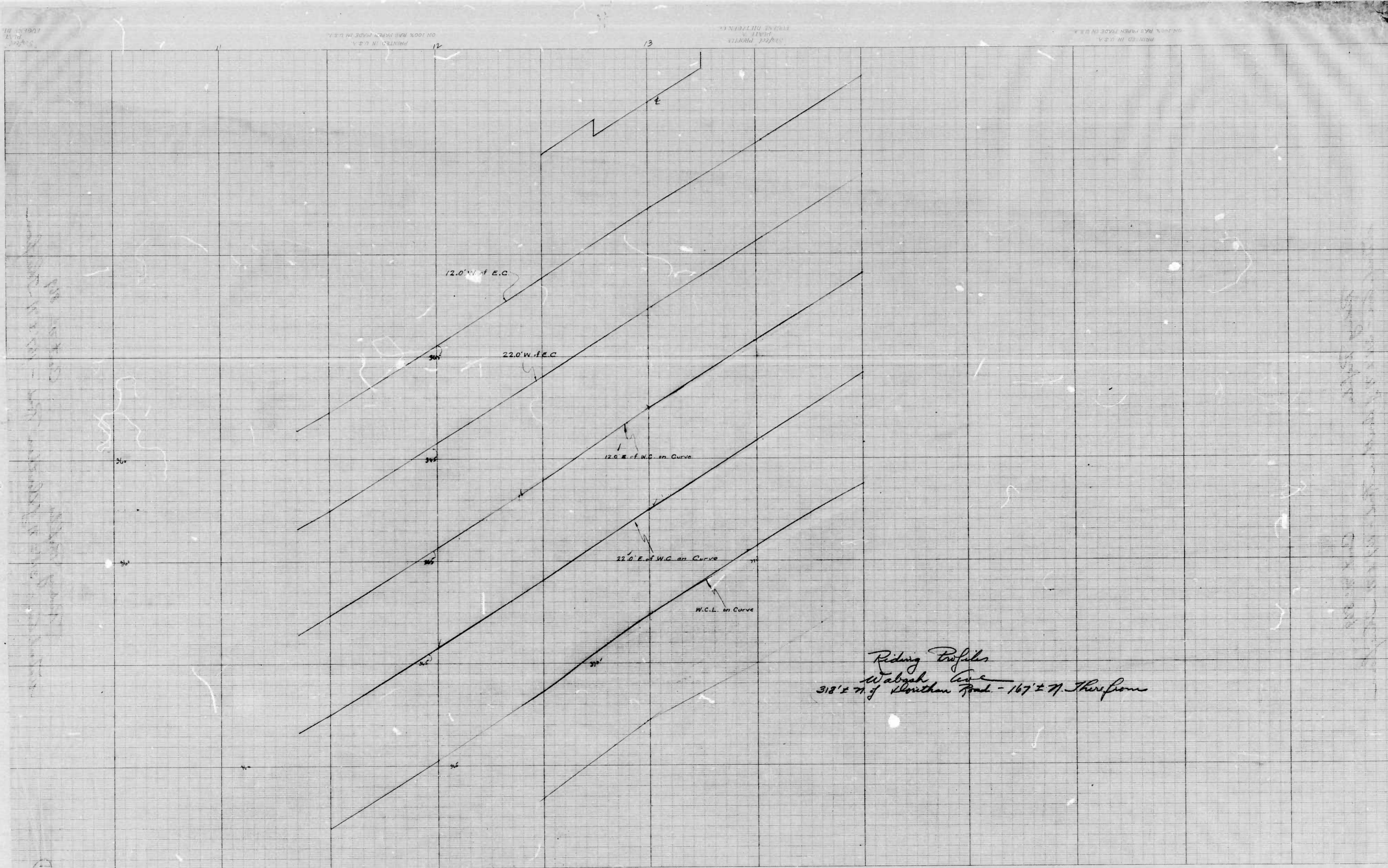
RATIO - 24

9



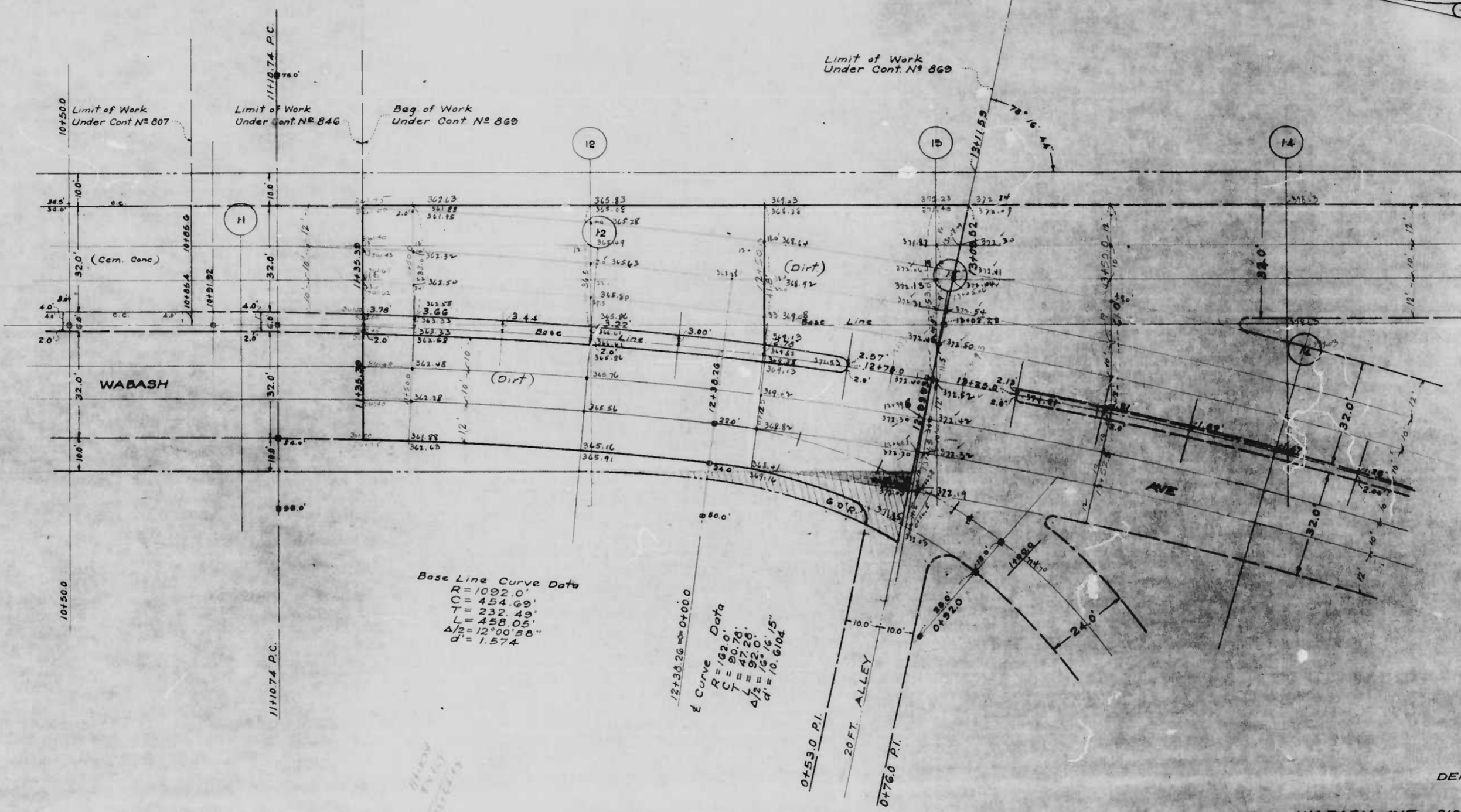
CITY OF BALTIMORE
 DEPARTMENT OF PUBLIC WORKS
 BUREAU OF HIGHWAYS
 CONT. N° 869
 RUBIN AVE. - ROGERS AVE. - DAWES DRIVE
 CEM. CONC. PAV. SEVEN (7) INS. THICK
 TRINITY BLDG. & CONST. CO. CONTRACTOR
 STARTED: 11-3-47 COMP: 11-13-47
 SCALE: 1" = 20.0' DATE: 3-10-48

DRAWN BY: J. W. Carter
 EXAMINED BY: J. H. Ewell



WABASH AVE - 310' ± N. OF DORITHAN RD - 167' ± N. THEREFROM
CONTRACT NO. 869
PLAN

WABASH AVE - 310' ± N. OF DORITHAN RD - 167' ± N. THEREFROM
CONTRACT NO. 869
PLAN



Base Line Curve Data
 R = 1092.0'
 C = 454.69'
 T = 232.49'
 L = 458.02'
 Δ = 12°00'00"
 Δ = 1.574

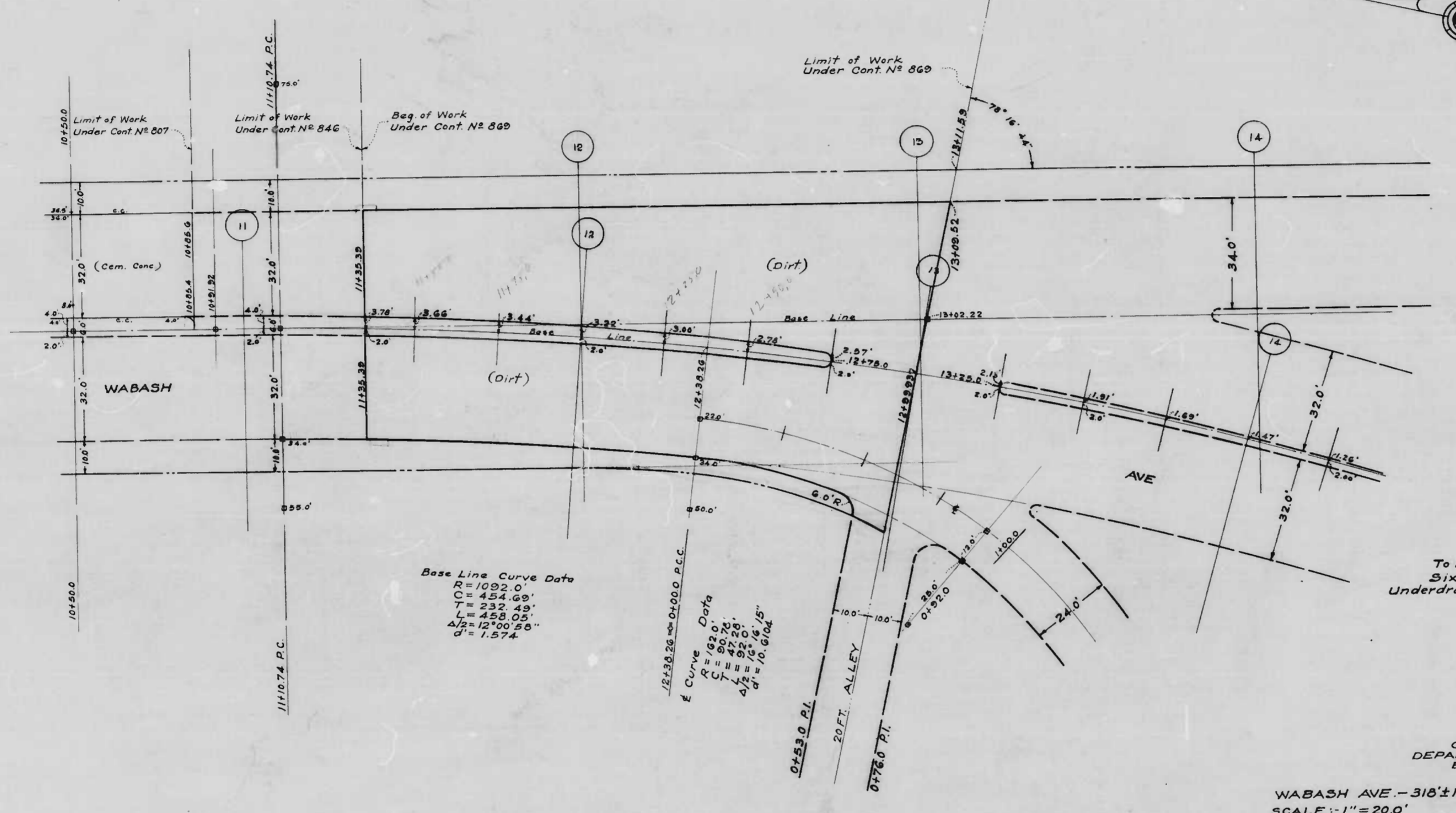
Curve Data
 R = 60.00'
 C = 10.00'
 T = 5.00'
 L = 10.00'
 Δ = 10.00°

CITY OF BALTIMORE
 DEPARTMENT OF PUBLIC WORKS
 BUREAU OF HIGHWAYS
 PLAN OF
 WABASH AVE - 310' ± N. OF DORITHAN RD - 167' ± N. THEREFROM
 SCALE 1" = 20.0' DATE NOV 4, 1947
 BOOK NO. X-230 CONT. NO. 869

APPROVED APPROVED
 ASSOCIATE ENGINEER HIGHWAYS ENGINEER
 APPROVED APPROVED

ENGINEER OF SURVEYS DIRECTOR OF PUBLIC WORKS

H. H. Currell



"NOTE"
 To Be Cement Concrete Paving Eight (8) Inches Thick.
 Six Inches of Soil Stabilization Materials and
 Underdrains are required.

CITY OF BALTIMORE
 DEPARTMENT OF PUBLIC WORKS
 BUREAU OF HIGHWAYS
 PLAN OF
 WABASH AVE. - 318 1/2 N. OF DORITAN RD. - 167 1/2 N. THEREFROM
 SCALE: 1" = 20.0' BOOK No. X-230 DATE: NOV. 4, 1947
 CONT. No. 869

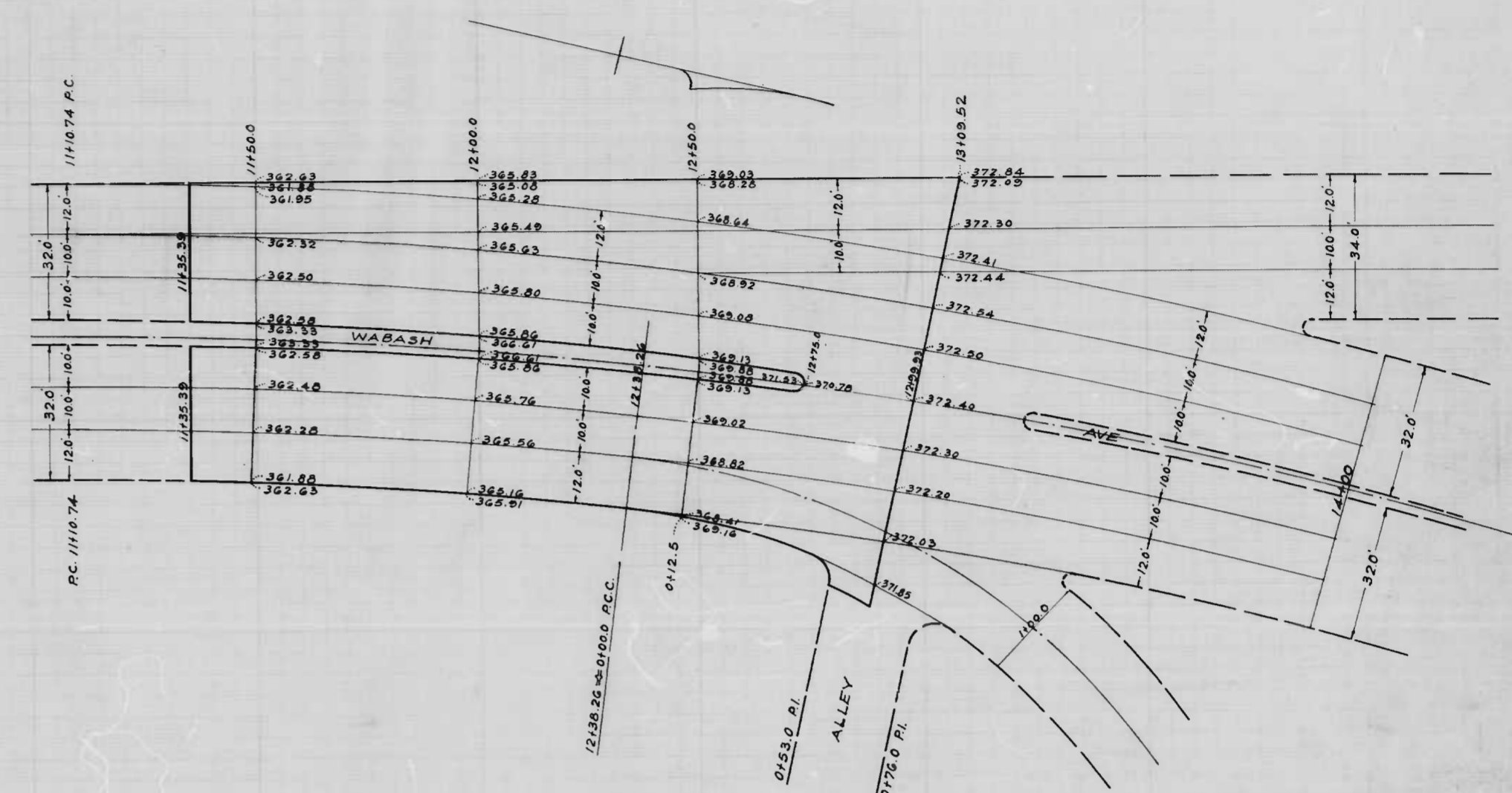
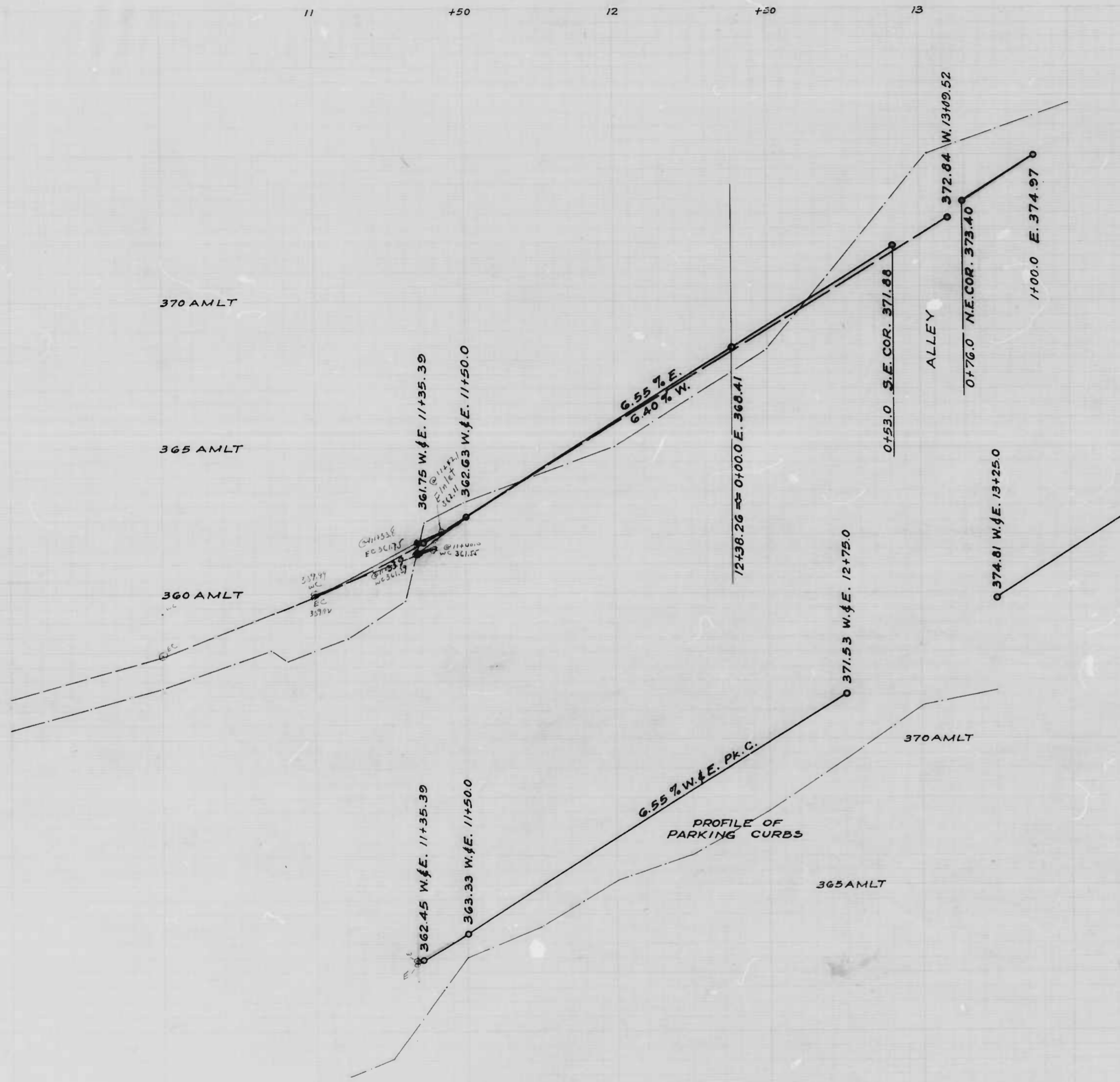
APPROVED
Henry Weisberg
 ASSOCIATE ENGINEER
 APPROVED

APPROVED
Julius J. Kelly
 HIGHWAYS ENGINEER
 APPROVED

Edward H. Hoyer
 ENGINEER OF SURVEYS

P. L. Hollands
 DIRECTOR OF PUBLIC WORKS

DRAWN BY *H. H. Conwell*
 EXAMINED BY *S. L. B.*
 ENGINEER IN CHARGE OF DRAWING

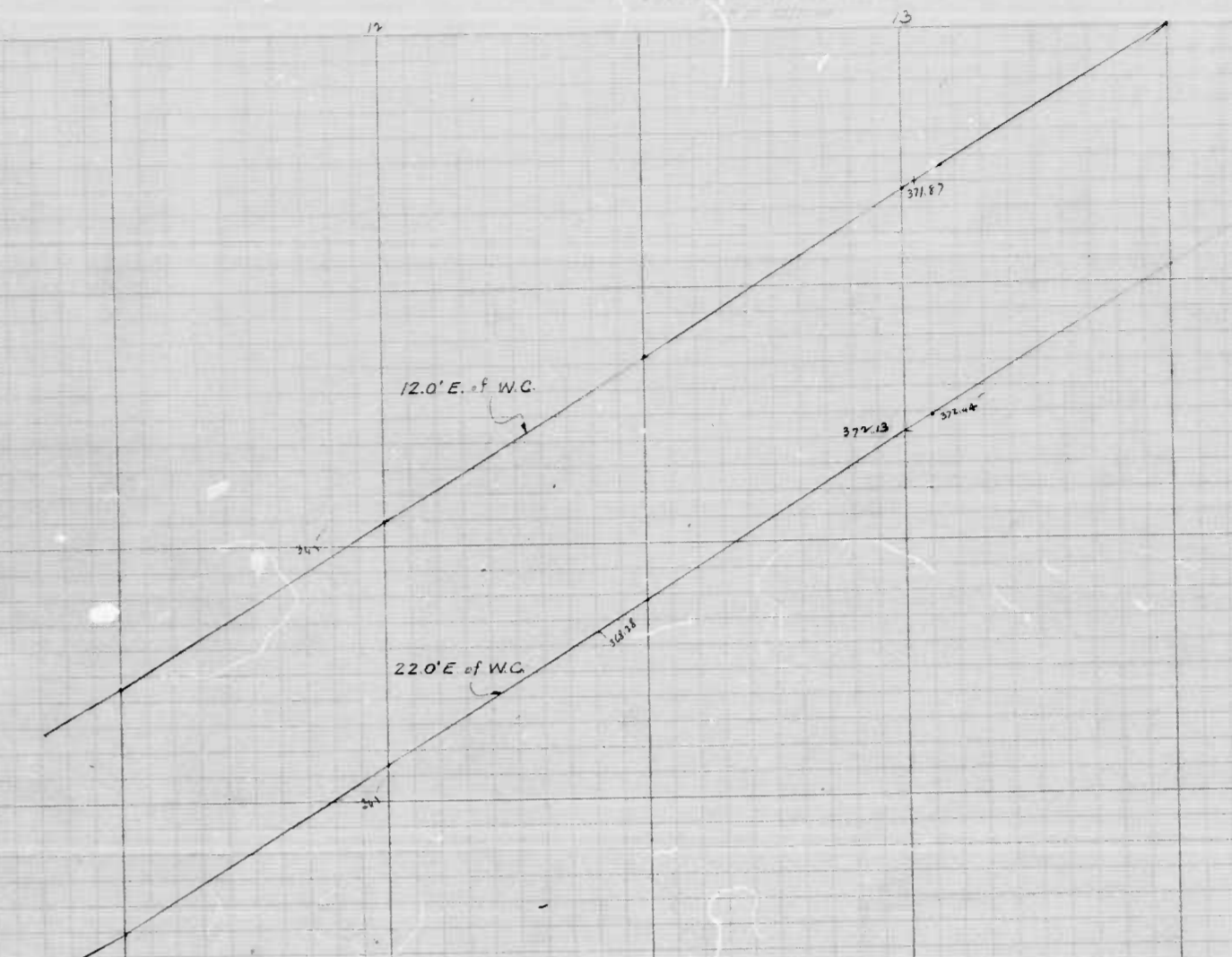
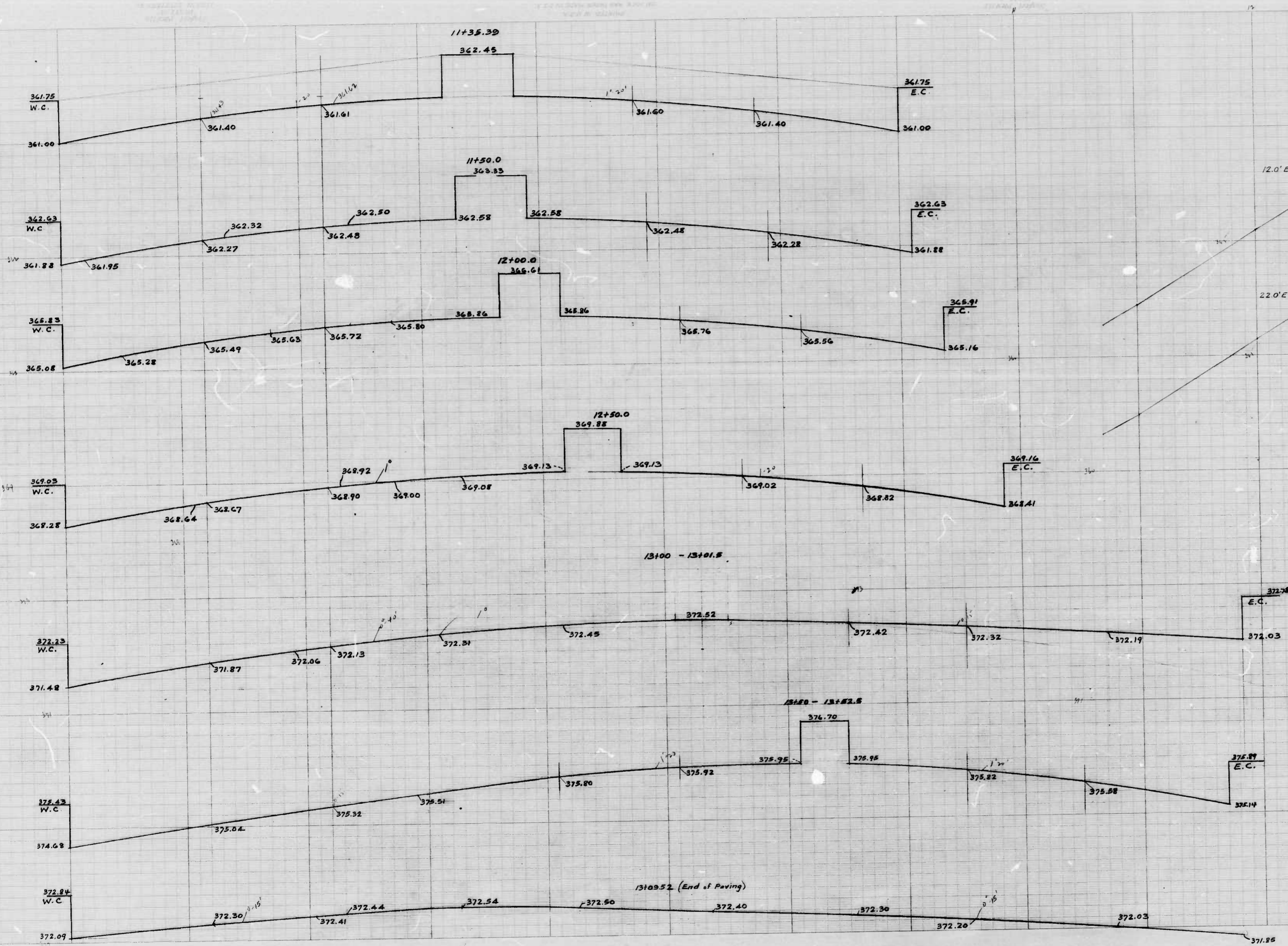


"NOTE"
The issuance of this Profile does not commit the City to the Acceptance and/or Improvement of any Thoroughfares shown hereon.

CITY OF BALTIMORE
DEPARTMENT OF PUBLIC WORKS
BUREAU OF HIGHWAYS
PROFILE OF
WABASH AVE - 310' N. OF DORITHAN RD. - 107' N. THEREFROM
Hor.: 1" = 20.0' Book N2 X-230
Ver.: 1" = 2.0' Date: Dec. 4, 1947
Cont. N2 869

APPROVED
Henry Weisberg
ASSOCIATE ENGINEER
APPROVED
Edward Woodcock
ENGINEER OF SURVEYS

APPROVED
James S. Gray
HIGHWAYS ENGINEER
APPROVED
P. J. Hollands
DIRECTOR OF PUBLIC WORKS



Wabash Ave
367' 71' of Smith Road - 167' E 71' Therefrom

