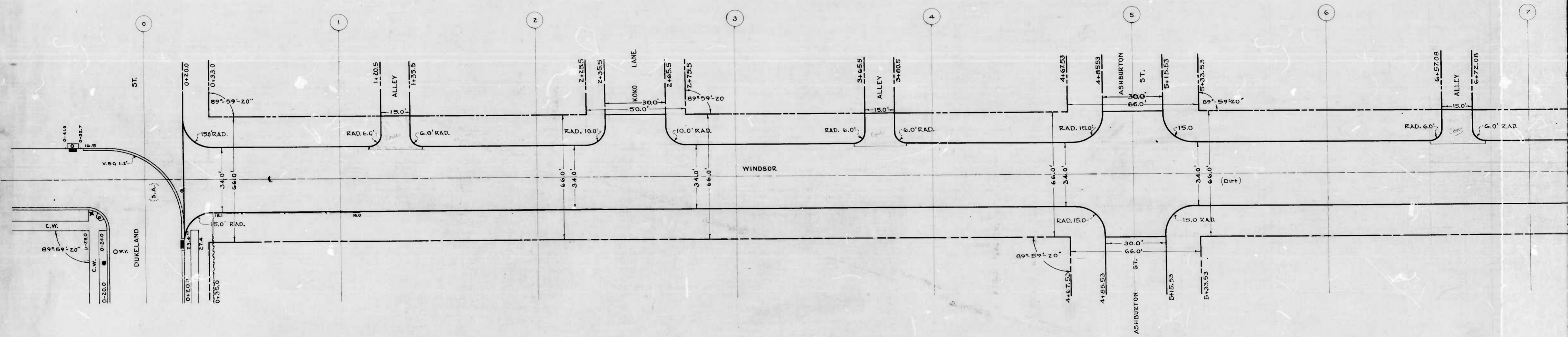


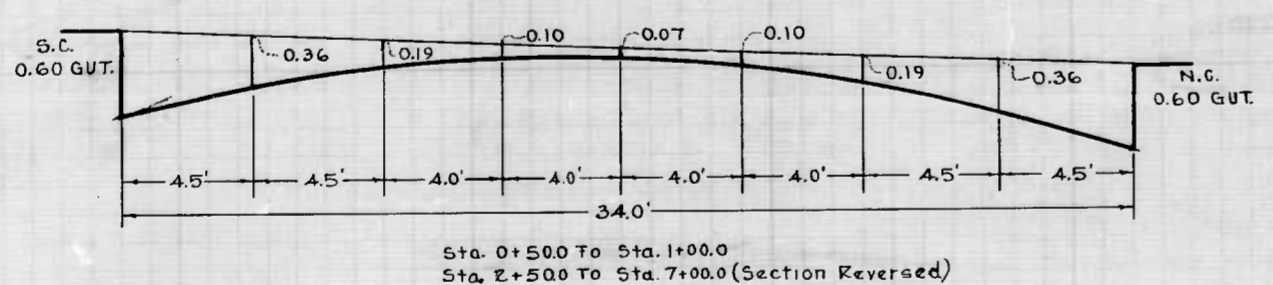
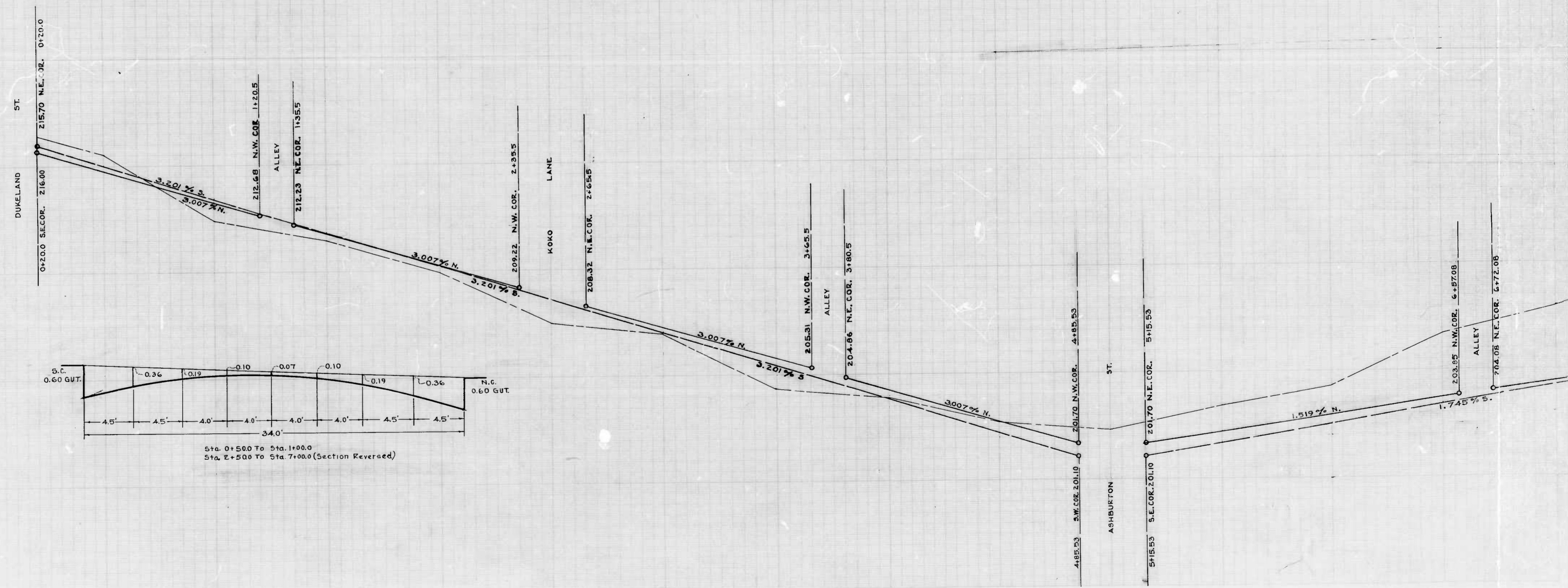
863

RATIO - 24 **1**

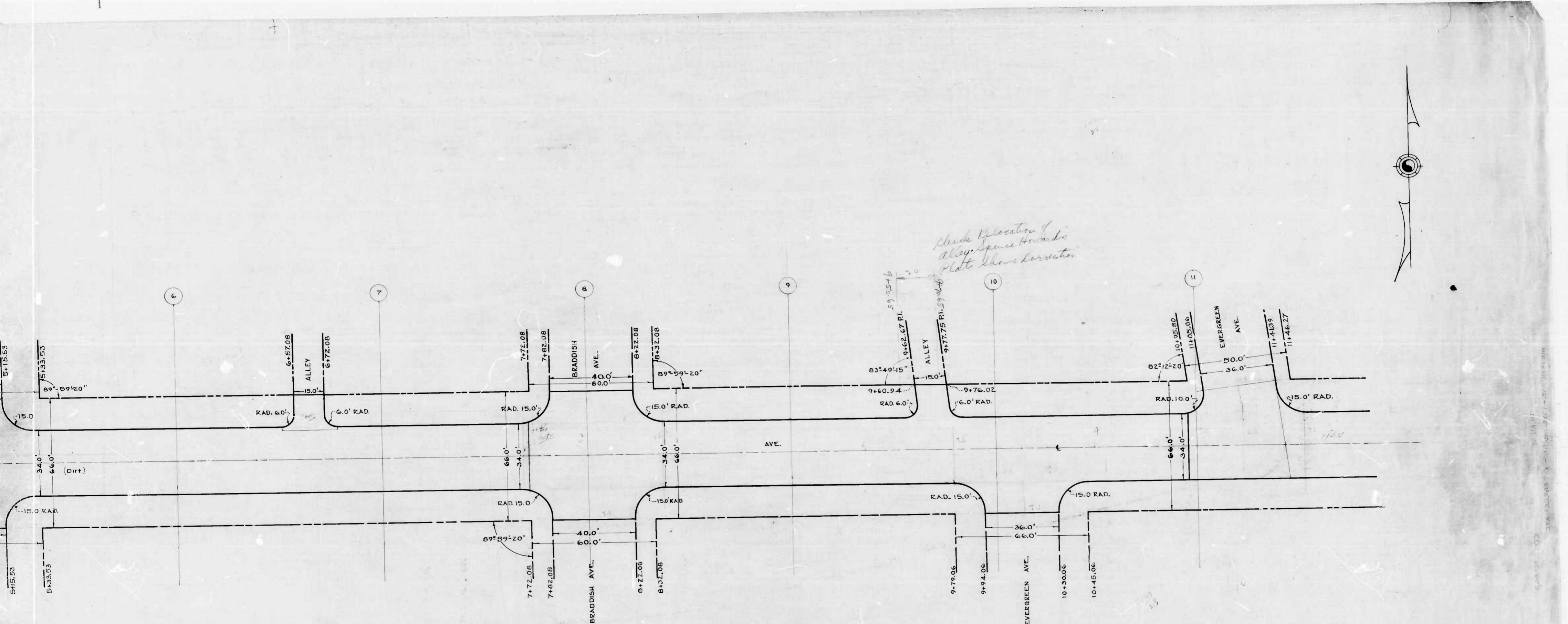


DESIGNED BY R. J. Winkel
PLANNED BY J. J. Winkel
APPROVED BY J. J. Winkel

230 AMLT.
225 AMLT.
220 AMLT.
215 AMLT.
210 AMLT.
205 AMLT.
200 AMLT.



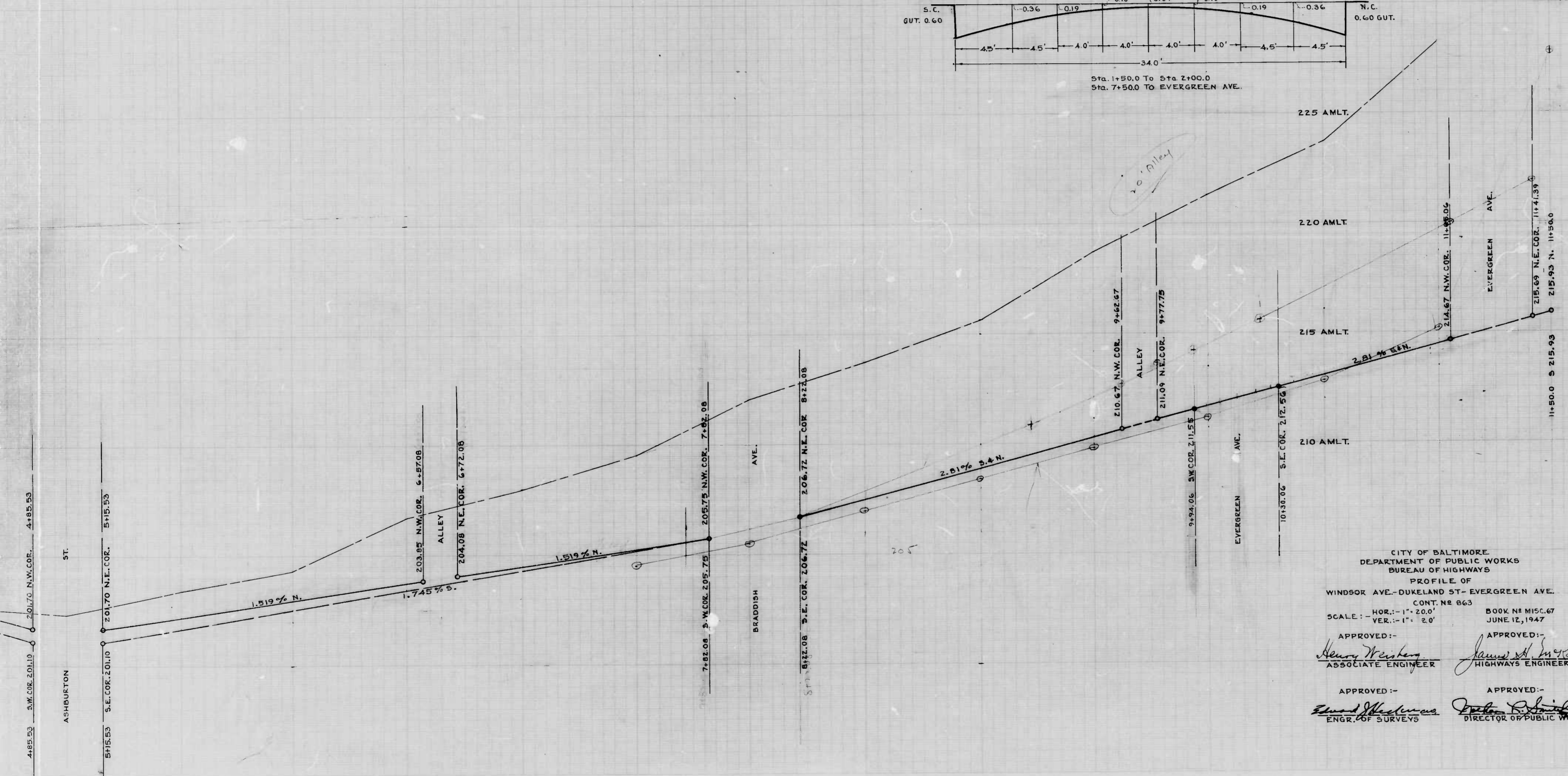
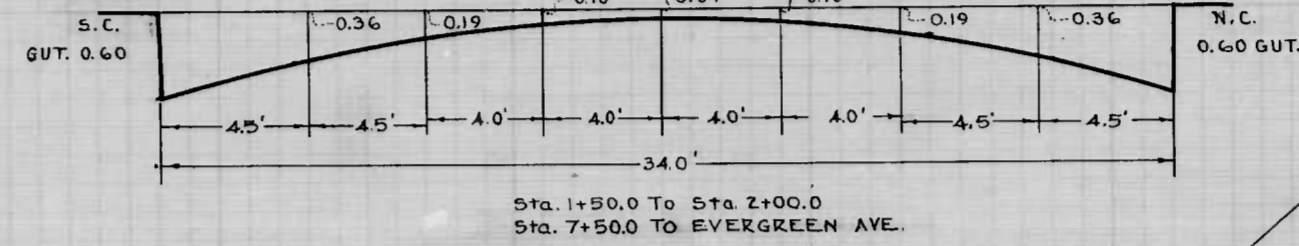
DESIGNED BY R.J. Winkel
 CHECKED BY S.S. Surratt
 ENGINEER IN CHARGE OF DIVISION



CITY OF BALTIMORE
 DEPARTMENT OF PUBLIC WORKS
 BUREAU OF HIGHWAYS
 PLAN OF
 WINDSOR AVE.-DUKELAND ST- EVERGREEN AVE.
 SCALE: -1"=20.0' BOOK NO MISC.67 DATE: -6-10-47
 CONT. NO 863

APPROVED: *Henry M. ...* ASSOCIATE ENGINEER
 APPROVED: *James H. ...* HIGHWAYS ENGINEER
 APPROVED: *Edward ...* ENGR. OF SURVEYS
 APPROVED: *Charles ...* DIRECTOR OF PUBLIC WORKS

1



CITY OF BALTIMORE
DEPARTMENT OF PUBLIC WORKS
BUREAU OF HIGHWAYS
PROFILE OF
WINDSOR AVE.-DUKELAND ST.-EVERGREEN AVE.
CONT. NR 863
SCALE: - HOR.: - 1" = 20.0'
VER.: - 1" = 2.0'

APPROVED: - *Henry Weisberg* ASSOCIATE ENGINEER

APPROVED: - *James H. McKay* HIGHWAYS ENGINEER

APPROVED: - *Edward J. Williams* ENGR. OF SURVEYS

APPROVED: - *William D. Smith* DIRECTOR OF PUBLIC WORKS

BOOK # MISC. 67
JUNE 12, 1947