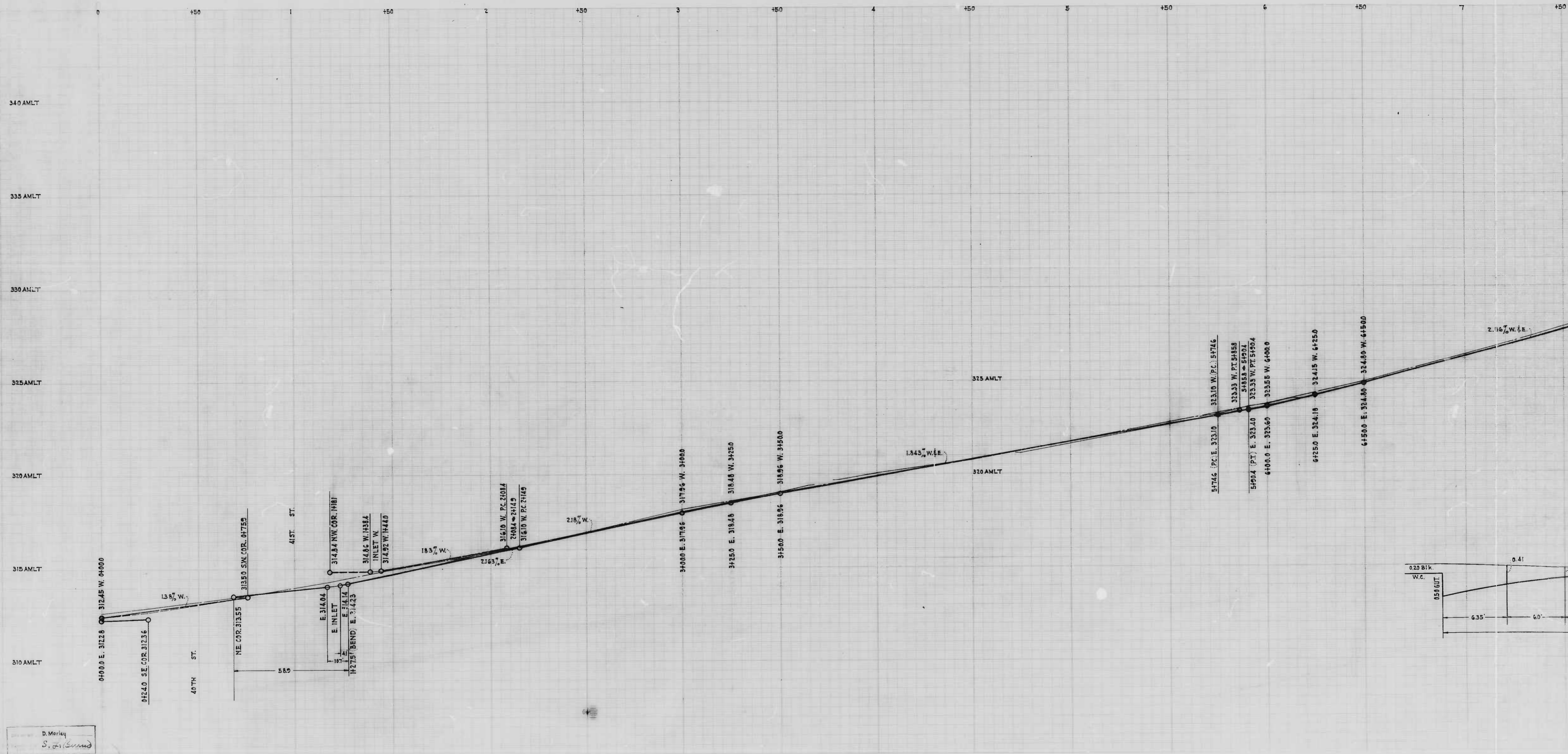
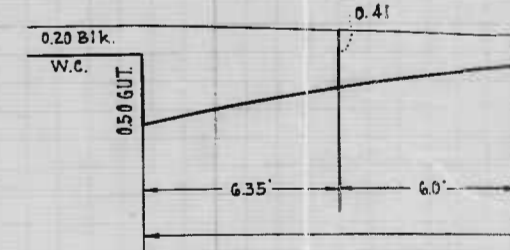
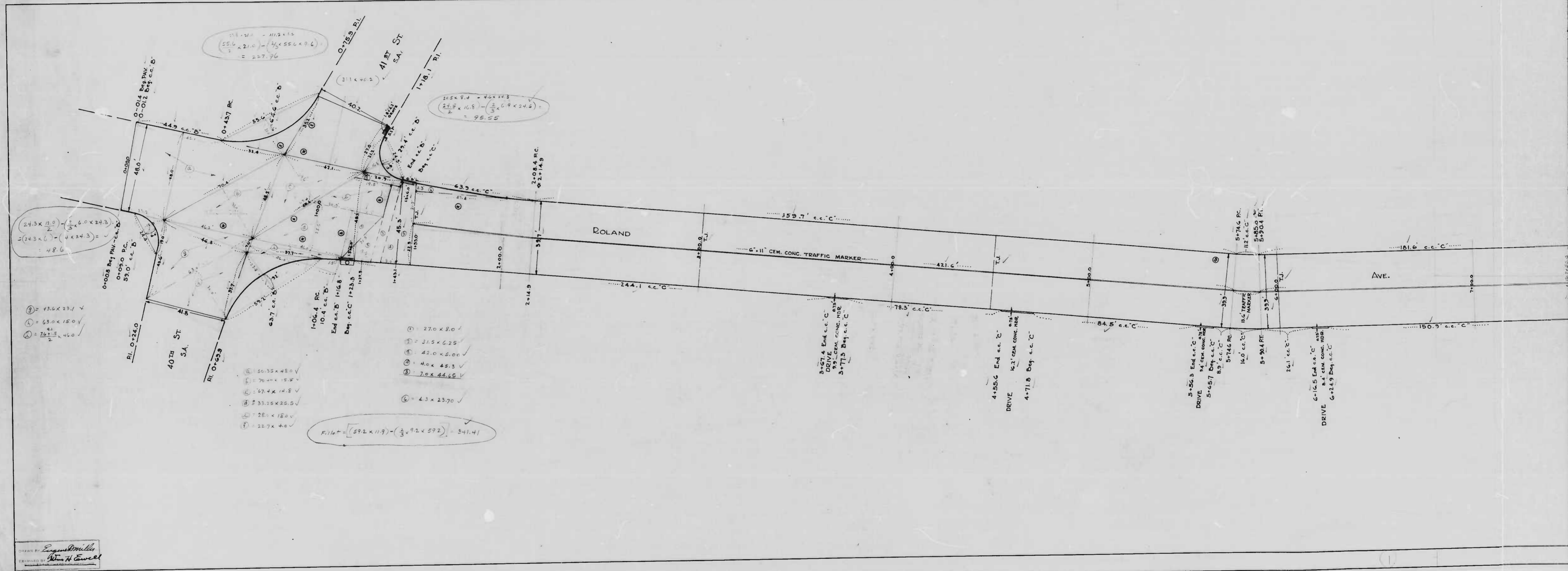


D. Merley
S. L. Burns



D. Marley
S. J. (Sund)





- ① = 43.6 x 23.1 ✓
- ② = 43.0 x 15.0 ✓
- ③ = 26.1 x 4.0 ✓

- ④ = 56.35 x 48.0 ✓
- ⑤ = 70.0 x 15.5 ✓
- ⑥ = 67.4 x 14.8 ✓
- ⑦ = 55.25 x 20.5 ✓
- ⑧ = 28.0 x 18.0 ✓
- ⑨ = 22.7 x 4.0 ✓

- ⑩ = 27.0 x 8.0 ✓
- ⑪ = 21.5 x 6.25 ✓
- ⑫ = 42.0 x 5.00 ✓
- ⑬ = 4.6 x 45.3 ✓
- ⑭ = 7.0 x 44.45 ✓

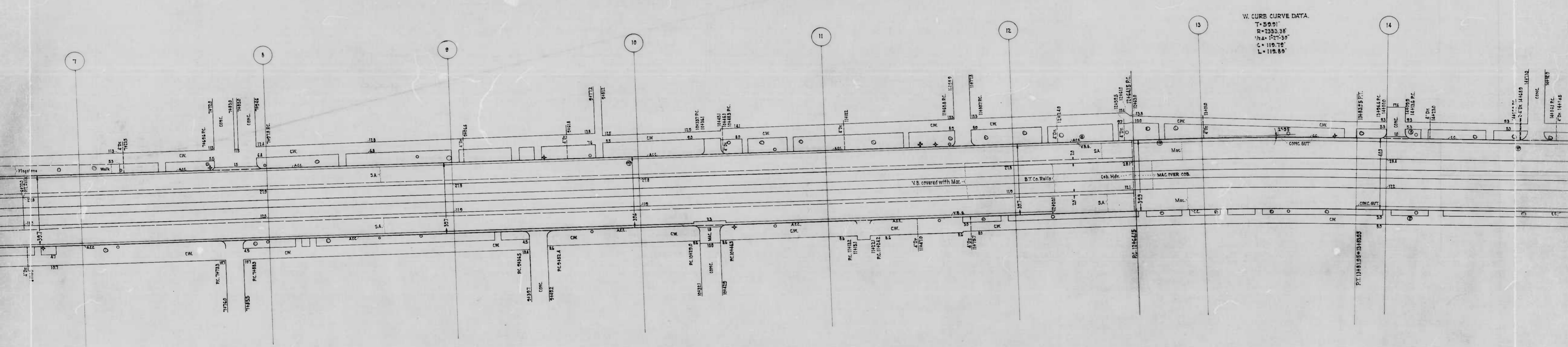
$$F.I.H. = \frac{(592 \times 119)}{3} - \frac{(3 \times 92 \times 592)}{3} = 341.41$$

$$\frac{55.6 \times 21.0}{3} - \frac{(4 \times 55.6 \times 9.6)}{3} = 227.76$$

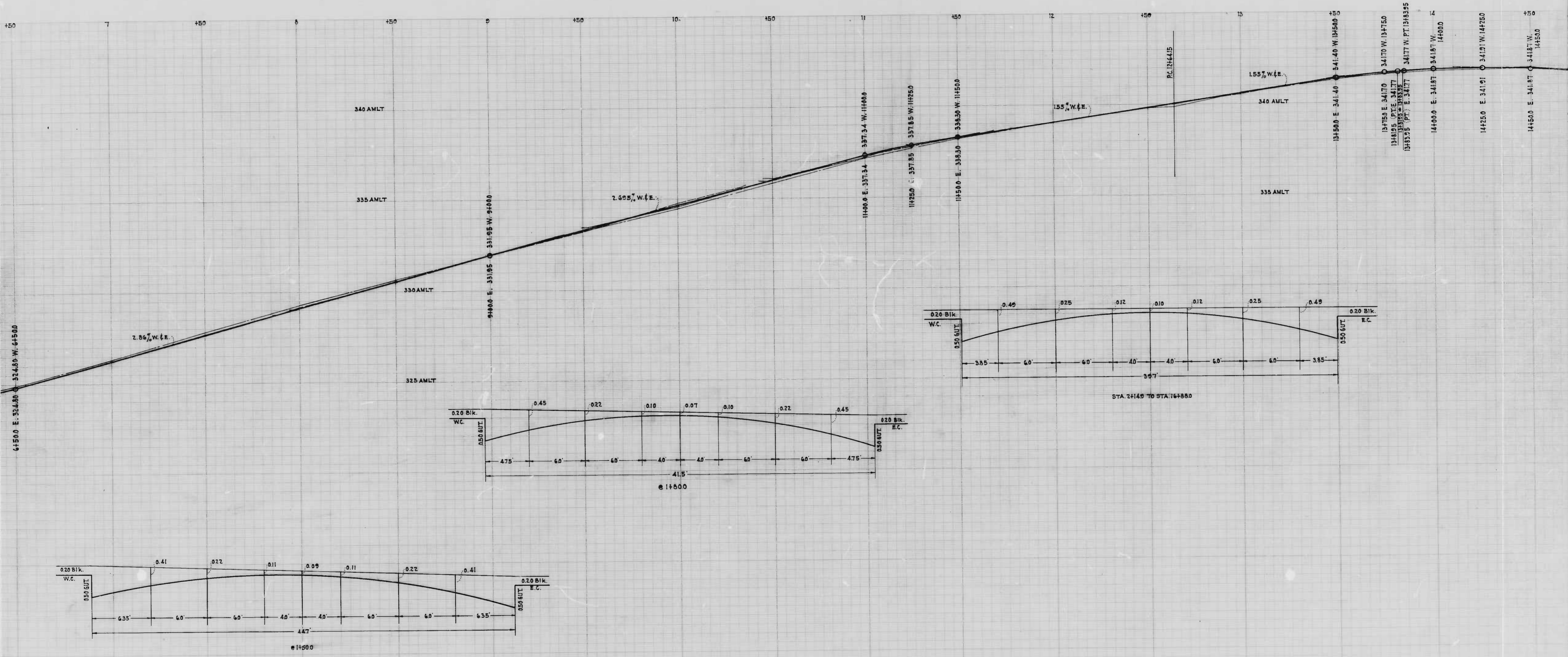
$$\frac{2154.94 \times 46 \times 113}{2} - \frac{(3 \times 69 \times 24.2)}{2} = 95.55$$

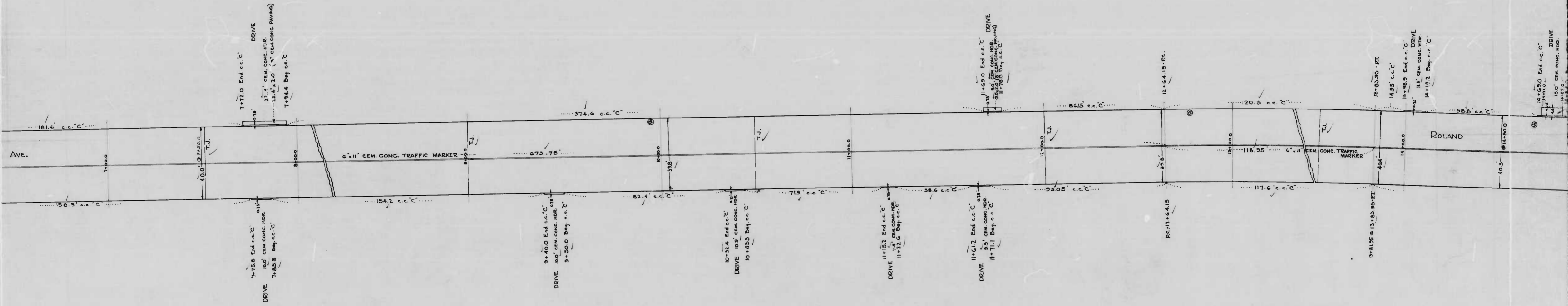
$$\frac{24.3 \times 11.0}{2} - \frac{(2 \times 6.0 \times 24.3)}{2} = 48.6$$

DRAWN BY: *Engelbrecht*
 EXAMINED BY: *W. H. Cover*

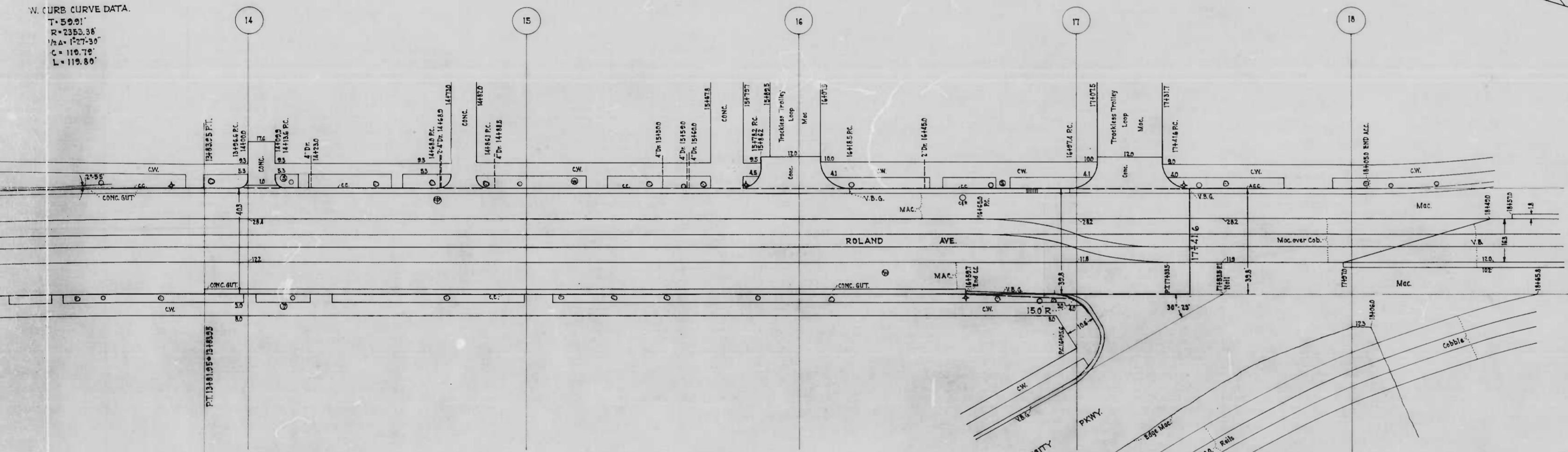


W. CURB CURVE DATA.
T = 50.0'
R = 250.0'
HA = 127.30°
C = 119.75°
L = 119.80'





W. CURB CURVE DATA.
 T = 50.01'
 R = 2353.36'
 P.A. = 127° 30'
 C = 119.74'
 L = 119.80'



NOTE:
 TO BE SHEET ASPHALT PAVING, 1 1/2" WEARING SURFACE, 1 1/2" BINDER ON AN 8" CEM. CONC. BASE. SOIL STABILIZATION MATERIALS AND/OR UNDERDRAINS ARE NOT REQUIRED.

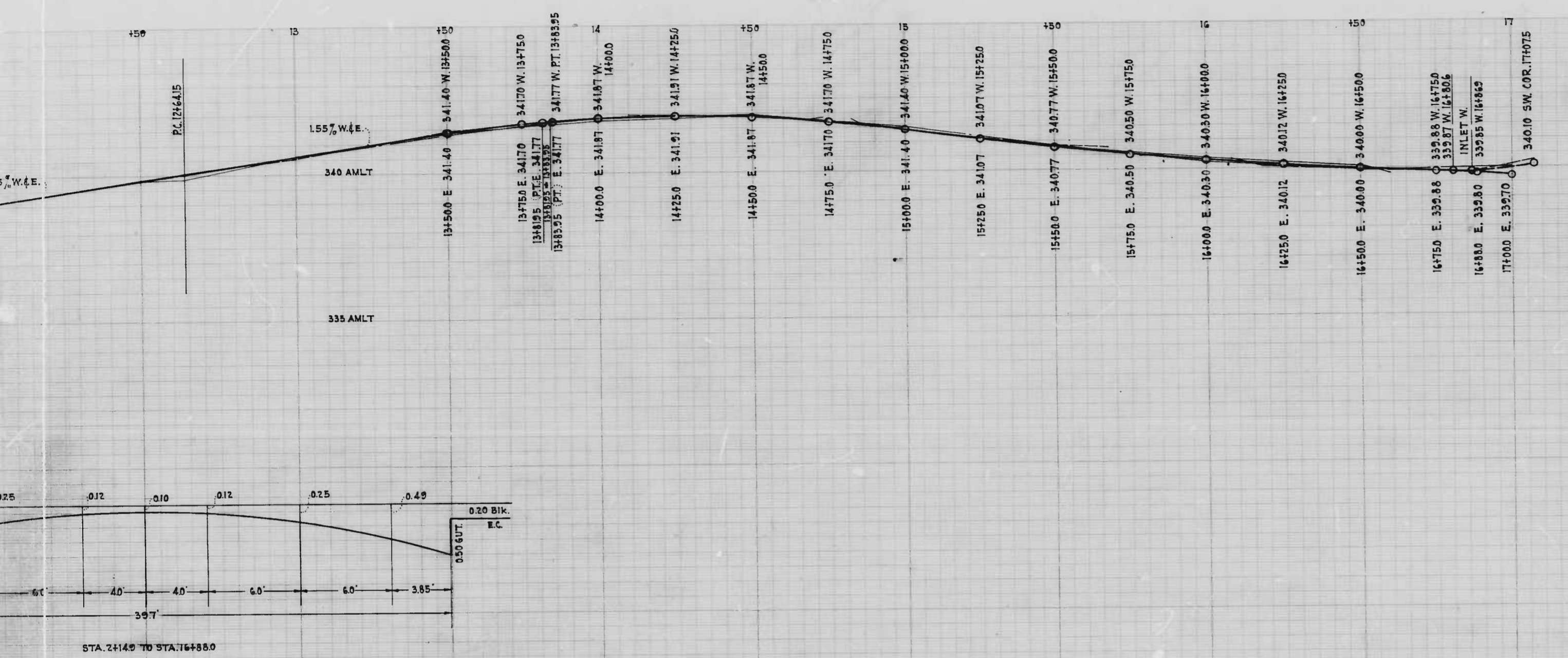
CITY OF BALTIMORE
 DEPARTMENT OF PUBLIC WORKS
 BUREAU OF HIGHWAYS
 PLAN OF
 ROLAND AVE. - 40TH ST. TO UNIVERSITY PKWY.
 CONT. NO. 862

SCALE: 1" = 200' BOOK NO. X-216
 DATE: AUG. 22, 1947

APPROVED: *Henry Weisberg* APPROVED: *James H. Murphy*
 ASSOCIATE ENGINEER HIGHWAYS ENGINEER

APPROVED: *Edward H. ...* APPROVED: *John R. ...*
 ENGINEER OF SURVEYS DIRECTOR OF PUBLIC WORKS

3



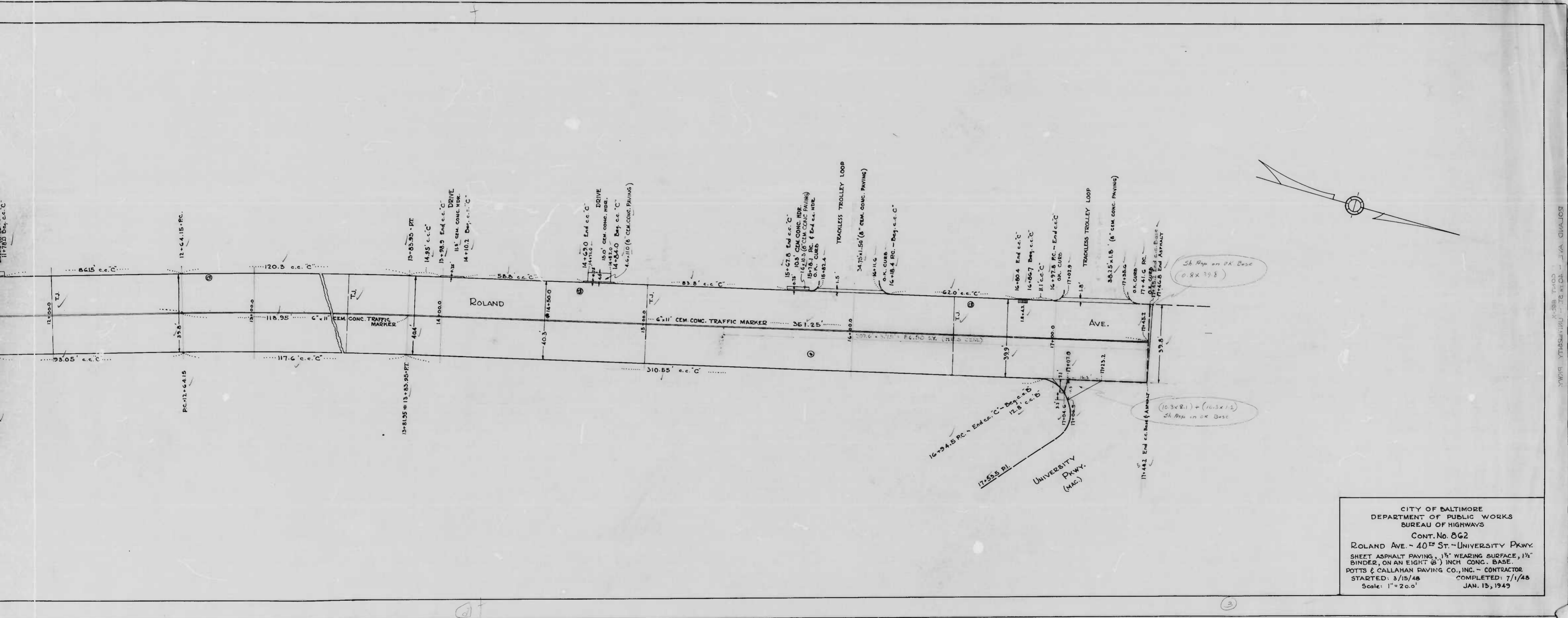
CITY OF BALTIMORE
 DEPARTMENT OF PUBLIC WORKS
 BUREAU OF HIGHWAYS
 PROFILE OF
 ROLAND AVE. - 40TH ST. TO UNIVERSITY PKWY.
 CONT. NO. 862

SCALE: HOR. - 1" = 200'
 VER. - 1" = 20'

BOOK NO. X-218
 JULY 30, 1947

APPROVED: *Henry Weisberg* ASSOCIATE ENGINEER
 APPROVED: *James H. W. [unclear]* HIGHWAYS ENGINEER

APPROVED: *Edward J. [unclear]* ENGINEER OF SURVEYS
 APPROVED: *Mathew R. [unclear]* DIRECTOR OF PUBLIC WORKS



CITY OF BALTIMORE
 DEPARTMENT OF PUBLIC WORKS
 BUREAU OF HIGHWAYS
 CONT. No. 862
 ROLAND AVE. - 40TH ST. - UNIVERSITY PKWY.
 SHEET ASPHALT PAVING, 1 1/2" WEARING SURFACE, 1 1/2" BINDER, ON AN EIGHT (8") INCH CONC. BASE.
 POTTS & CALLAHAN PAVING CO., INC. - CONTRACTOR
 STARTED: 3/15/48 COMPLETED: 7/1/48
 Scale: 1" = 20.0' JAN. 13, 1949

K-288 T-100
 YWPK YTHASUWU - 176 W.C. - J.V. CHAILOS