

NOTE:
 THE ISSUANCE OF THIS PLAN AND PROFILE DOES NOT COMMIT THE CITY TO THE ACCEPTANCE AND/OR IMPROVEMENT OF ANY THOROUGHFARES SHOWN HEREON.
 TO BE CEMENT CONCRETE PAVING SEVEN (7) INCHES THICK. SOIL STABILIZATION MATERIALS AND/OR UNDERDRAINS ARE NOT REQUIRED.

CITY OF BALTIMORE
 DEPARTMENT OF PUBLIC WORKS
 BUREAU OF HIGHWAYS

PLAN & PROFILE
 CHINQUAPIN PKWY. - BELVEDERE AVE TO 226' N. OF RAMBLEWOOD RD.
 CONT. NO. 859

SCALE PLAN - 1" = 40'
 PROFILE - 1" = 10'

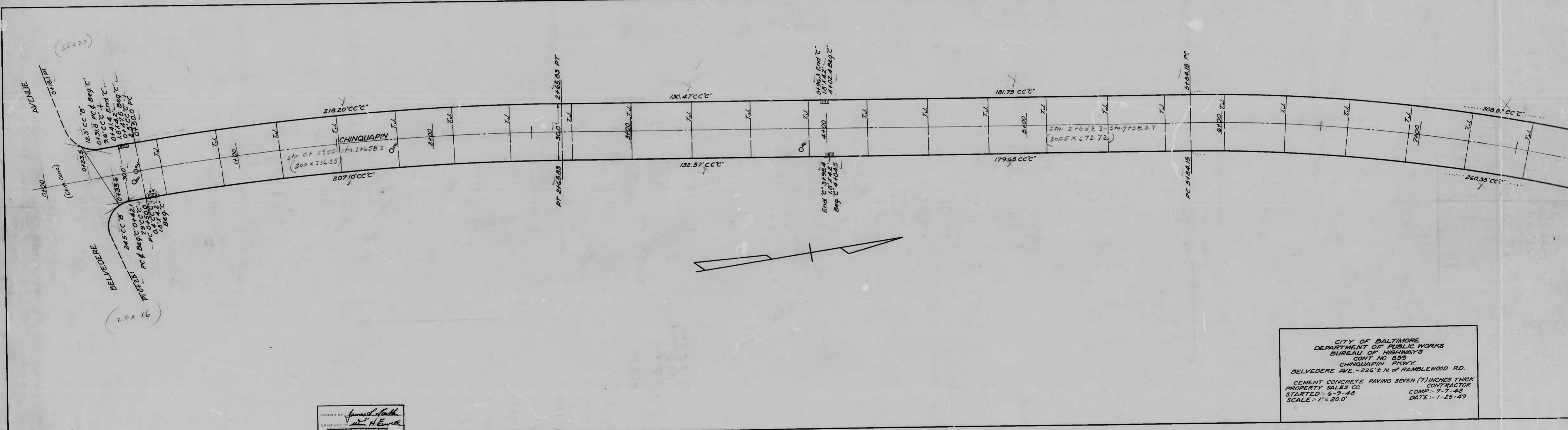
BOOK NO. X 235
 NOV. 26, 1947

APPROVED: *Henry Weisberg*
 ASSOCIATE ENGINEER

APPROVED: *James J. Smith*
 HIGHWAYS ENGINEER

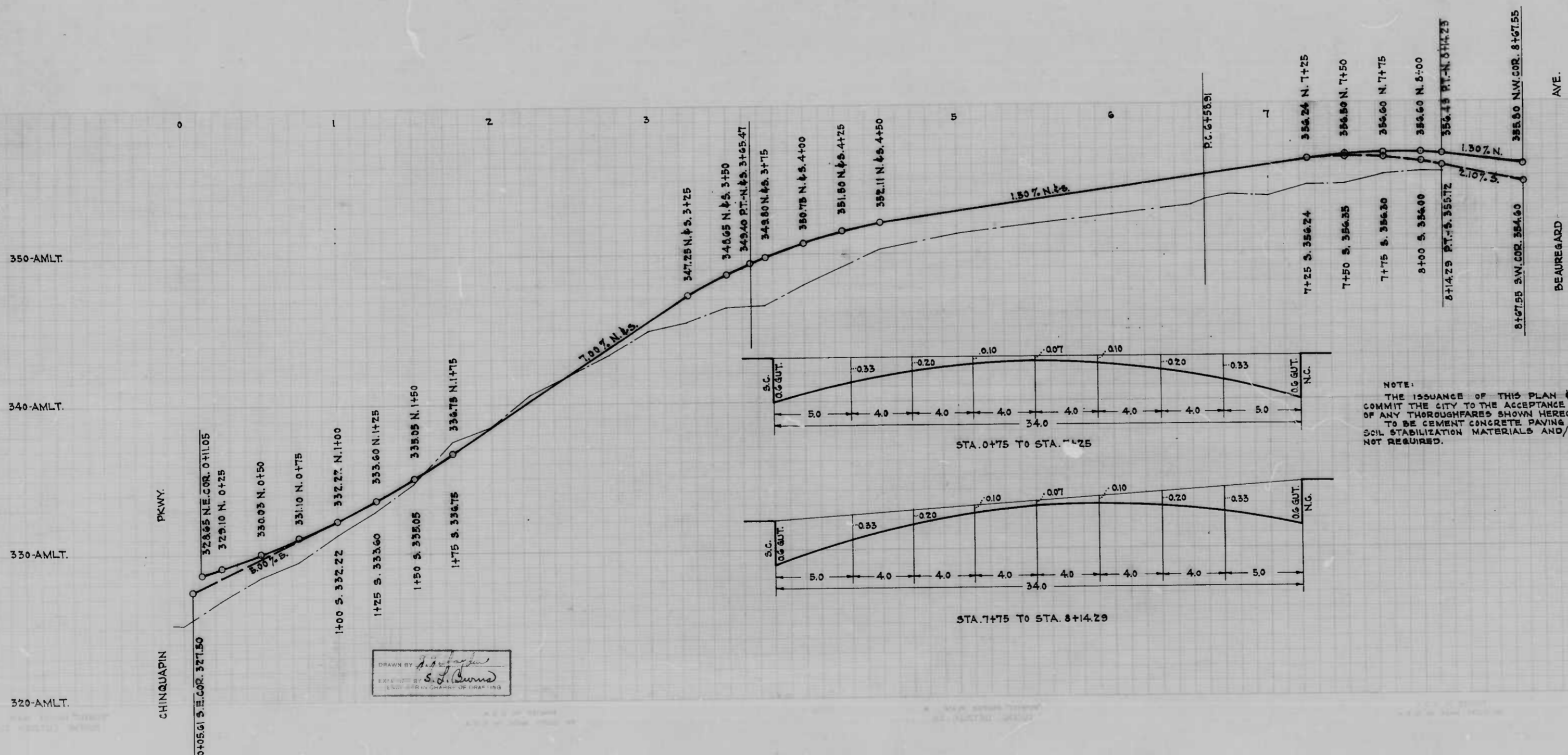
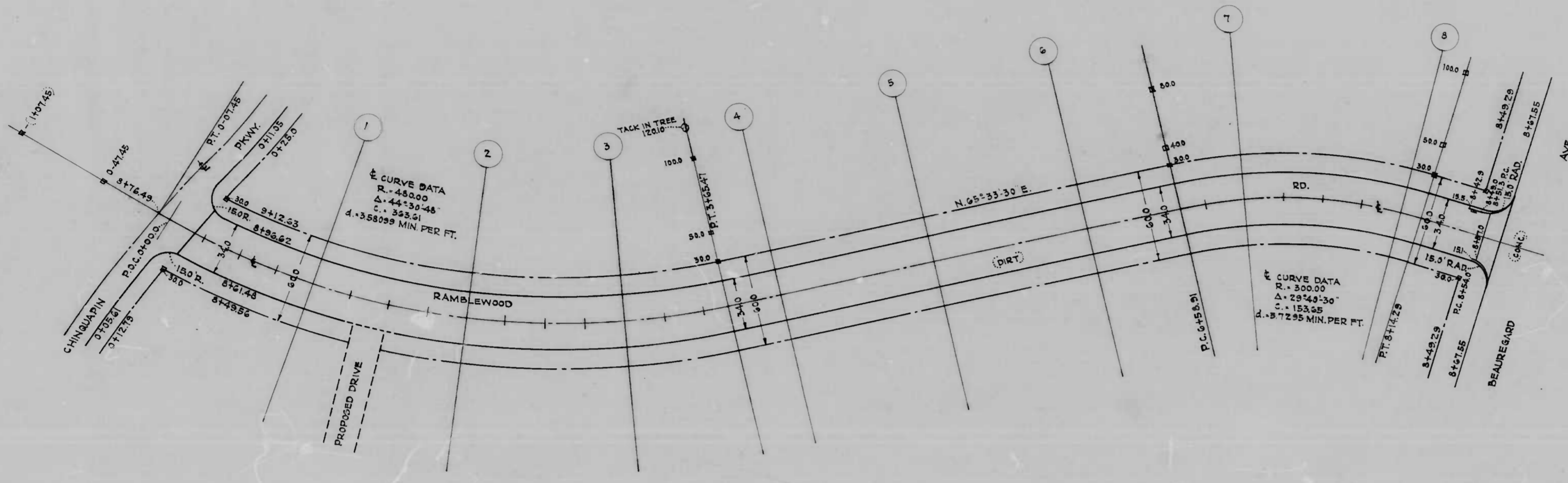
APPROVED: *Edward Becker*
 ENGINEER OF SURVEYS

APPROVED: *William L. Smith*
 DIRECTOR OF PUBLIC WORKS



DRAWN BY *James L. Smith*
 EXAMINED BY *W. H. Ewing*

CITY OF BALTIMORE
 DEPARTMENT OF PUBLIC WORKS
 BUREAU OF HIGHWAYS
 CONT NO 859
 CHINQUAPIIN PKWY
 BELVEDERE AVE - 226' N. OF RAMBLEWOOD RD.
 CEMENT CONCRETE PAVING SEVEN (7) INCHES THICK
 CONTRACTOR
 PROPERTY SALES CO
 STARTED - 6-9-48
 SCALE - 1" = 20.0'
 COMP - 9-7-48
 DATE - 1-25-49

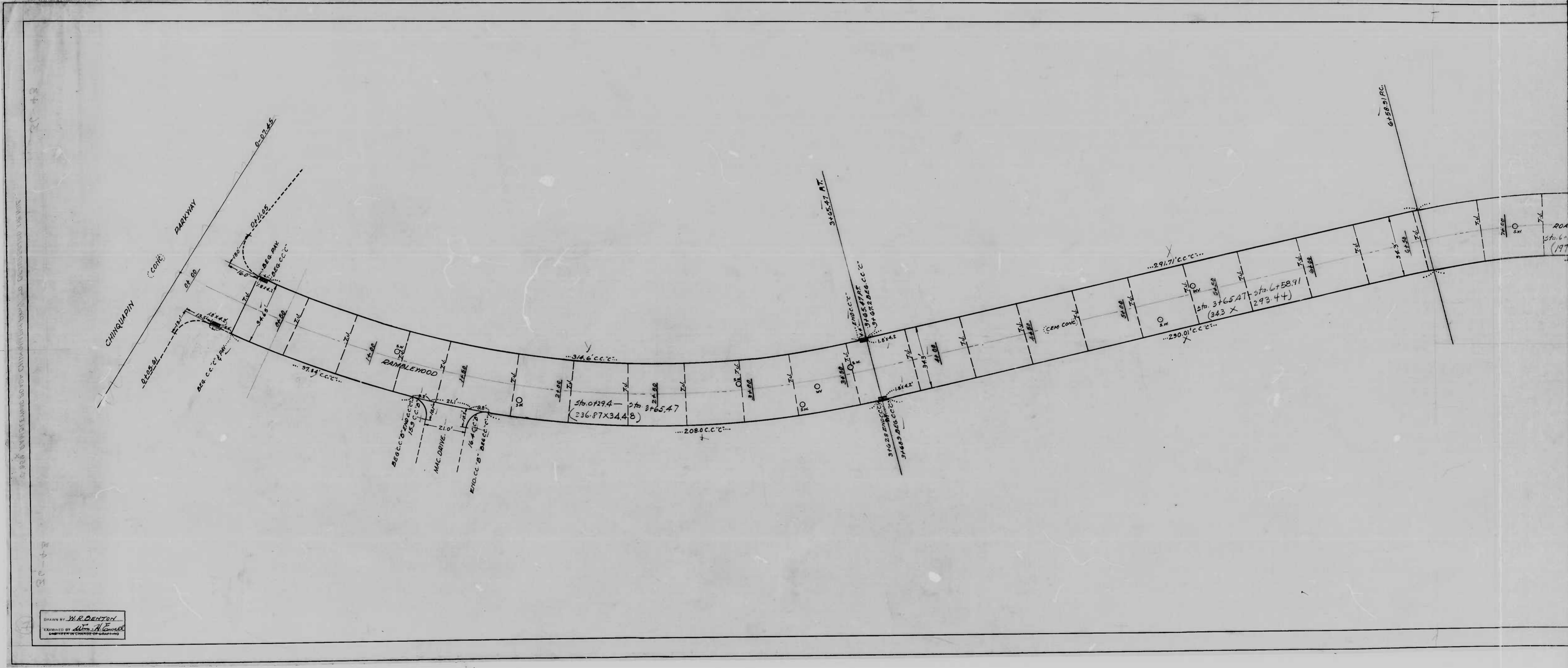


NOTE:
 THE ISSUANCE OF THIS PLAN & PROFILE DOES NOT
 COMMIT THE CITY TO THE ACCEPTANCE AND/OR IMPROVEMENT
 OF ANY THOROUGHFARE SHOWN HEREON.
 TO BE CEMENT CONCRETE PAVING SEVEN (7) INS. THICK.
 SOIL STABILIZATION MATERIALS AND/OR UNDERDRAINS ARE
 NOT REQUIRED.

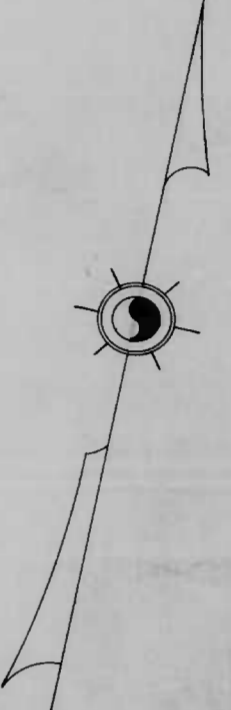
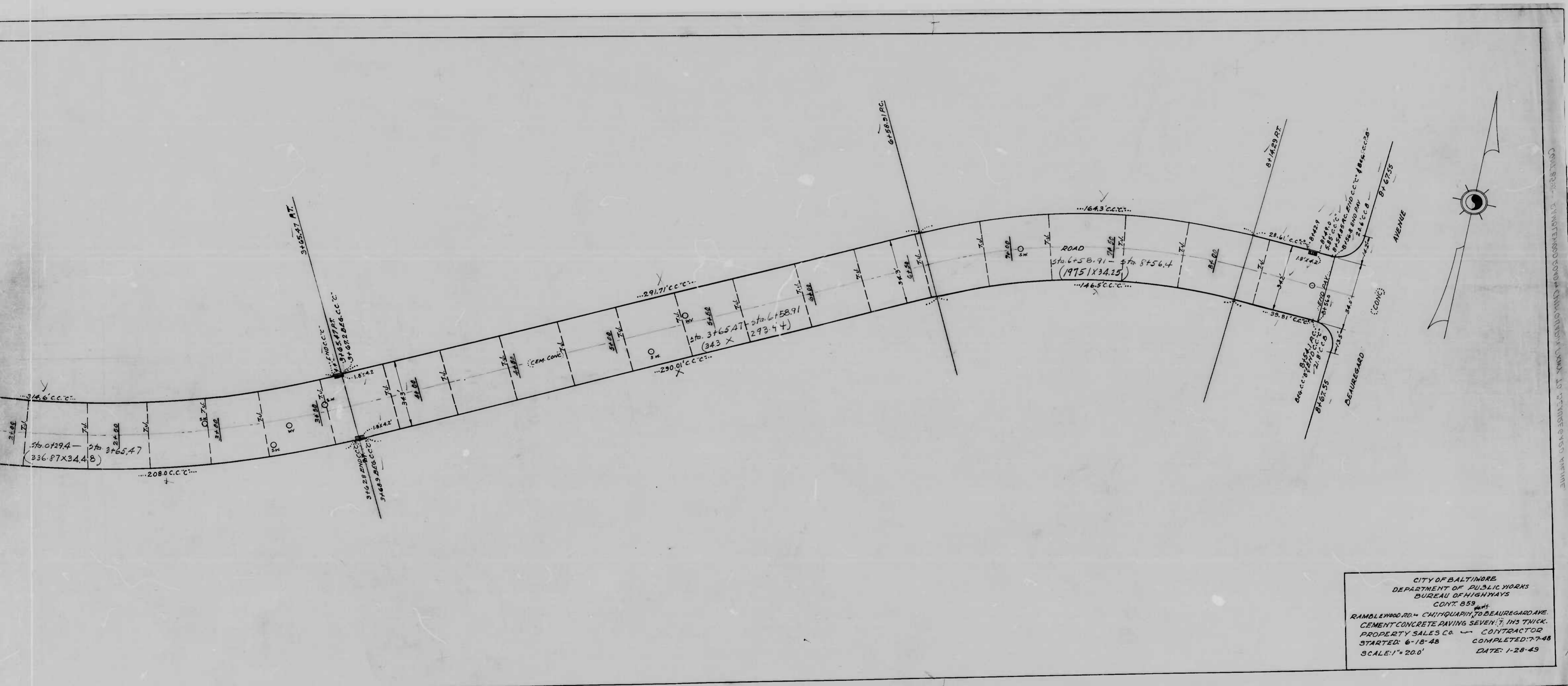
CITY OF BALTIMORE
 DEPARTMENT OF PUBLIC WORKS
 BUREAU OF HIGHWAYS
 PLAN & PROFILE
 RAMBLEWOOD RD.-CHINQUAPIN PKWY TO BEAUREGARD AVE.
 CONT. N^o 859
 SCALE: PLAN - 1"=40.0' BOOK MAX-233
 PROFILE - HOR - 1"=40.0' DEC. 2, 1947
 VER - 1"=4.0'
 APPROVED: *Henry Weisberg* APPROVED: *James M. Taylor*
 ASSOCIATE ENGINEER HIGHWAYS ENGINEER
 APPROVED: *Edward J. Harter* APPROVED: *Nathan L. Smith*
 ENGINEER OF SURVEYS DIRECTOR OF PUBLIC WORKS

DRAWN BY: *[Signature]*
 CHECKED BY: *S. G. Burns*

CITY OF BALTIMORE, DEPARTMENT OF PUBLIC WORKS, BUREAU OF HIGHWAYS, PLAN & PROFILE, RAMBLEWOOD RD.-CHINQUAPIN PKWY TO BEAUREGARD AVE, CONT. N^o 859



DRAWN BY *W.R. DENTON*
 IN CHARGE
 EXAMINED BY *Wm. A. Gault*
 LICENSED PROFESSIONAL ENGINEER



CITY OF BALTIMORE
 DEPARTMENT OF PUBLIC WORKS
 BUREAU OF HIGHWAYS
 CONT 859
 RAMBLEWOOD RD. - CHITQUAH TO BEAUREGARD AVE.
 CEMENT CONCRETE PAVING SEVEN (7) IN. THICK.
 PROPERTY SALES CO. - CONTRACTOR
 STARTED: 6-18-48 COMPLETED: 7-7-48
 SCALE: 1" = 20.0' DATE: 1-28-49

CONT. 859 - RAMBLEWOOD ROAD FROM CHITQUAH TO BEAUREGARD AVENUE