

E. Schneider
 S. S. ...
 ...

CITY OF BALTIMORE
 DEPARTMENT OF PUBLIC WORKS
 BUREAU OF HIGHWAYS
 PROFILE OF
 ASH ST.-CLIPPER MILL RD.-CLIPPER HEIGHTS AVE.
 CONT. N° 844

SCALE: HOR. 1"=20.0'
 VER. 1"=20.0'

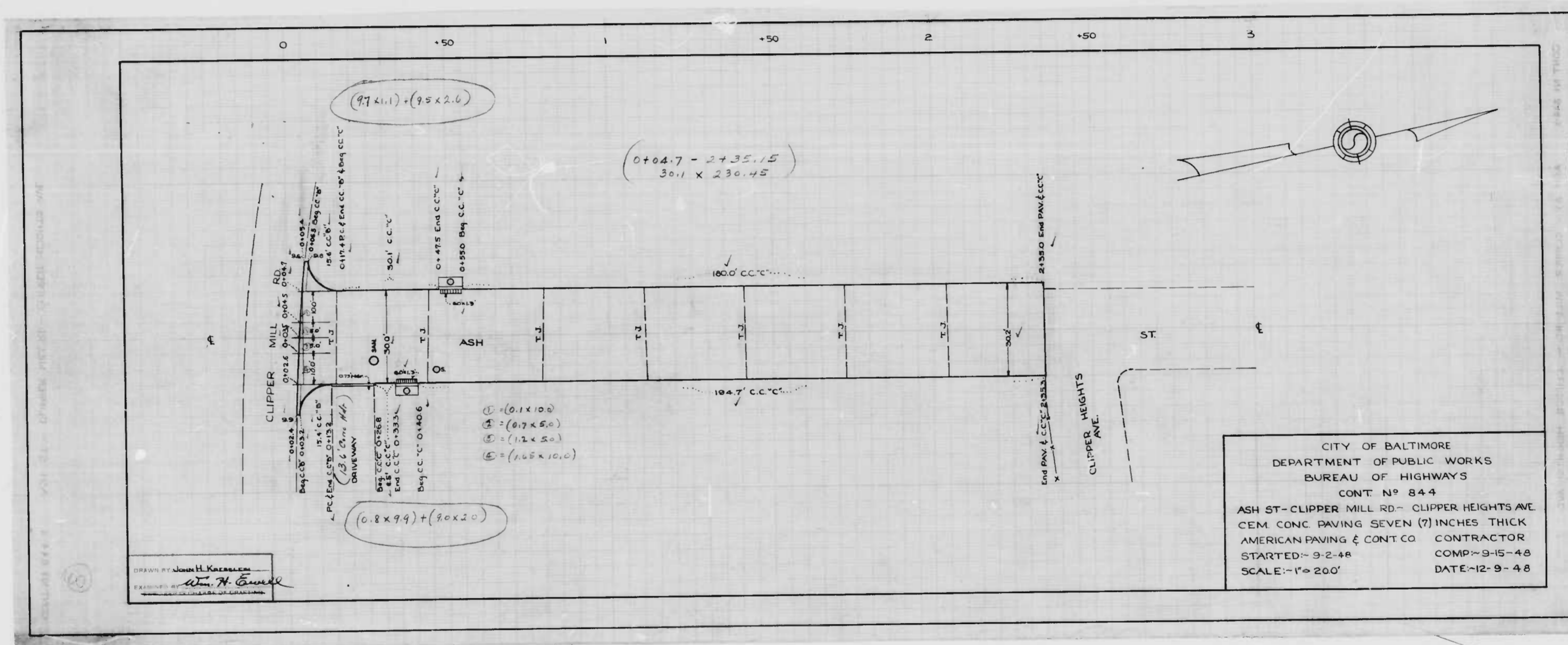
APPROVED:
Henry Weisberg
 ASSOCIATE ENGINEER

APPROVED:
W. H. ...
 HIGHWAYS ENGINEER

APPROVED:
Edward ...
 ENGINEER OF SURVEYS

APPROVED:
Paul ...
 DIRECTOR OF PUBLIC WORKS

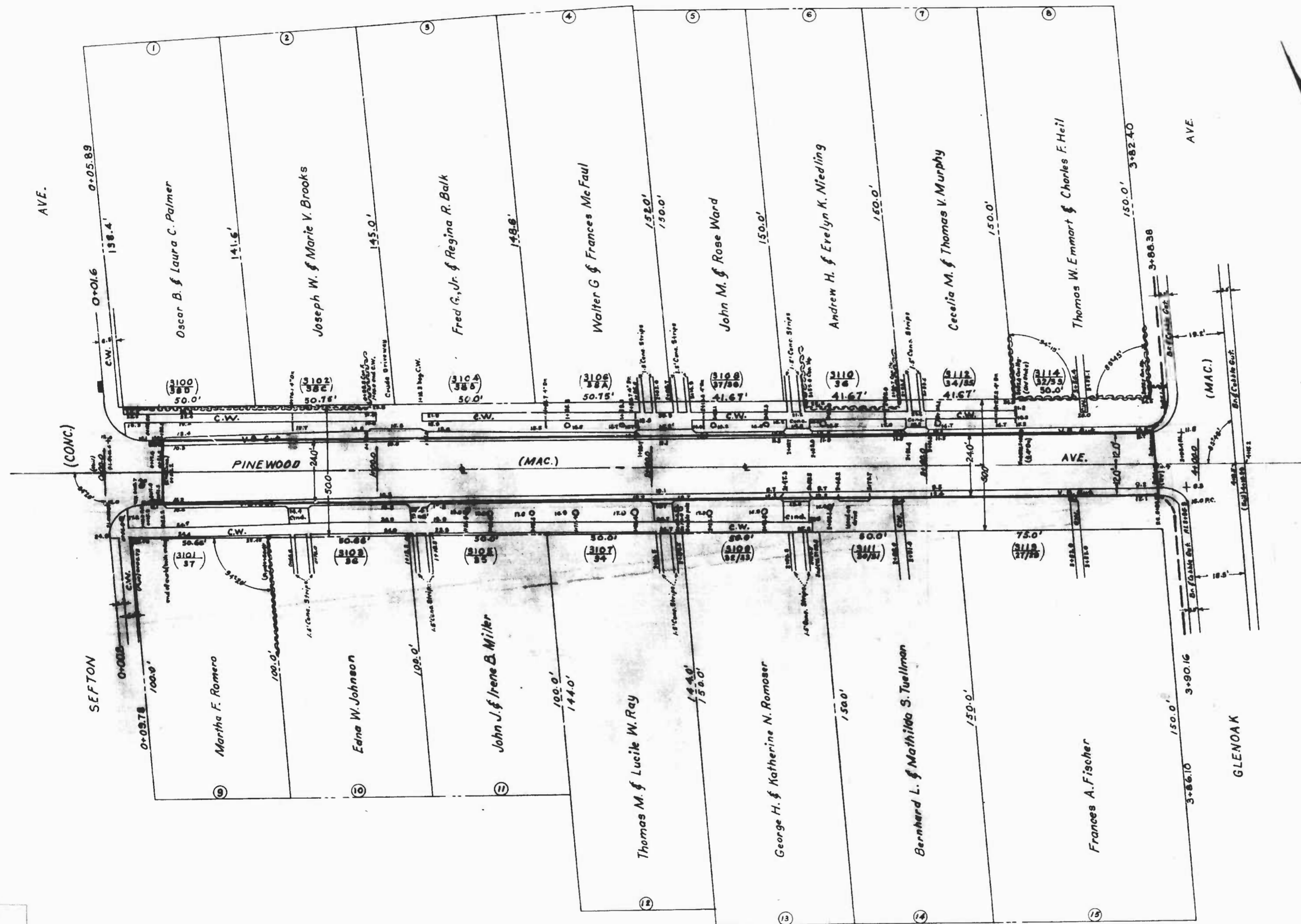
BOOK-X217
 DATE-JUNE 20, 1947



WARD - 27

SECTION - 4

BLOCK - 5612



WARD - 27

SECTION - 4

BLOCK - 5612-A

PLAT #
 HOUSE OR DEV. LOT #
 APPEAL TAX COURT LOT #
 WARD 27
 SECTION 4
 BLOCKS 5612 & 5612A

FILED *Henry I. 1-17-47*
 HIGHWAYS ENGINEER
 PER *[Signature]*

CITY OF BALTIMORE
 DEPARTMENT OF PUBLIC WORKS
 BUREAU OF HIGHWAYS
 ASSESSMENT PLAT # 589A
 PINEWOOD AVE - SEFTON AVE. GLENOAK AVE.
 SCALE: 1" = 20.0'
 CONT. # 844
 BOOK # X-206A
 DATE: APRIL 29, 1947

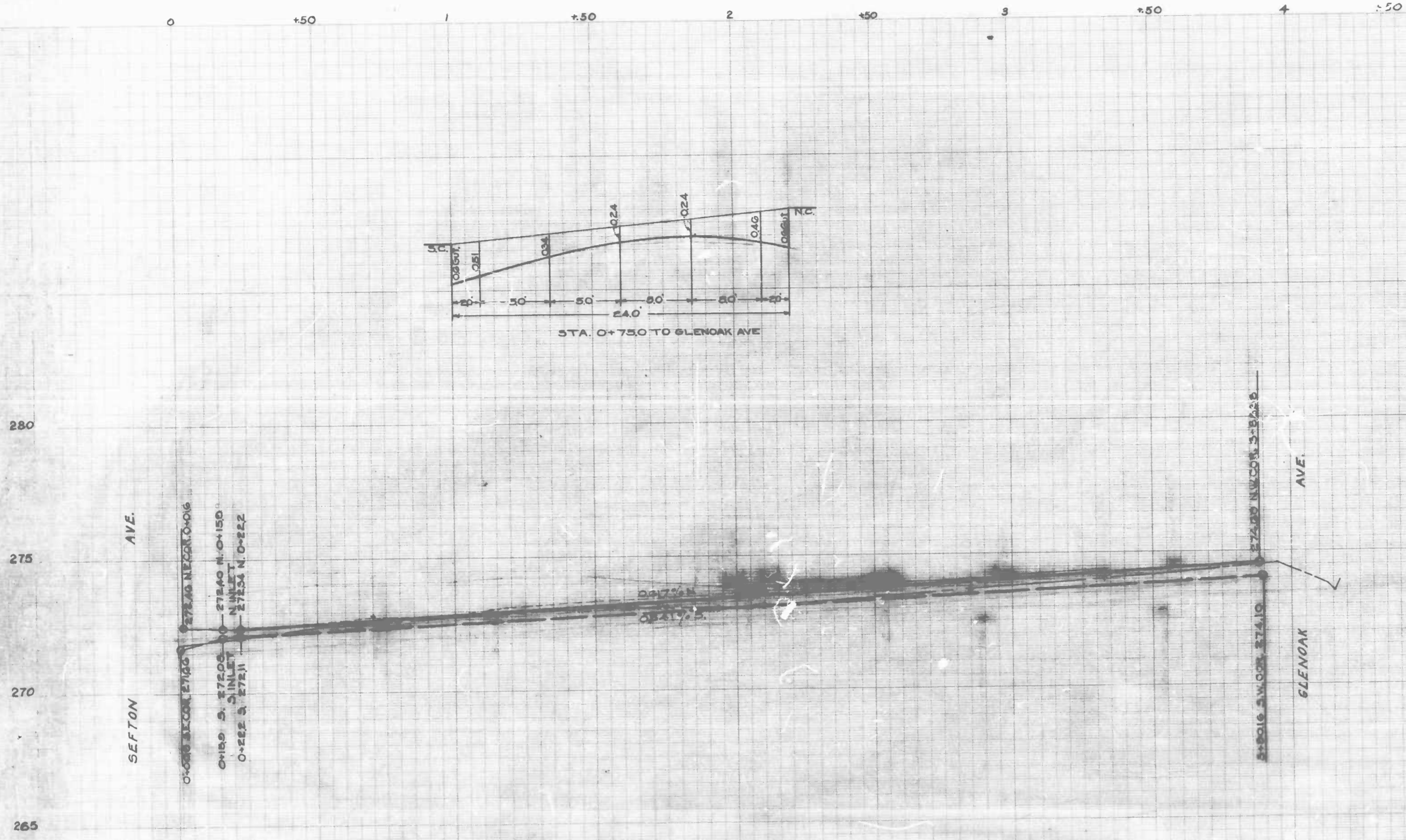
APPROVED
[Signature]
 ASSOCIATE ENGINEER
 APPROVED

APPROVED
[Signature]
 HIGHWAYS ENGINEER
 APPROVED

[Signature]
 ENGINEER OF SURVEYS

[Signature]
 DIRECTOR OF PUBLIC WORKS

E. Schneider



PINEWOOD AVE SEFTON AVE - GLENOAK AVE
 DRAWN BY E. SCHNEIDER
 DATE: 6-11-27

PINEWOOD AVE SEFTON AVE - GLENOAK AVE
 DRAWN BY E. SCHNEIDER
 DATE: 6-11-27

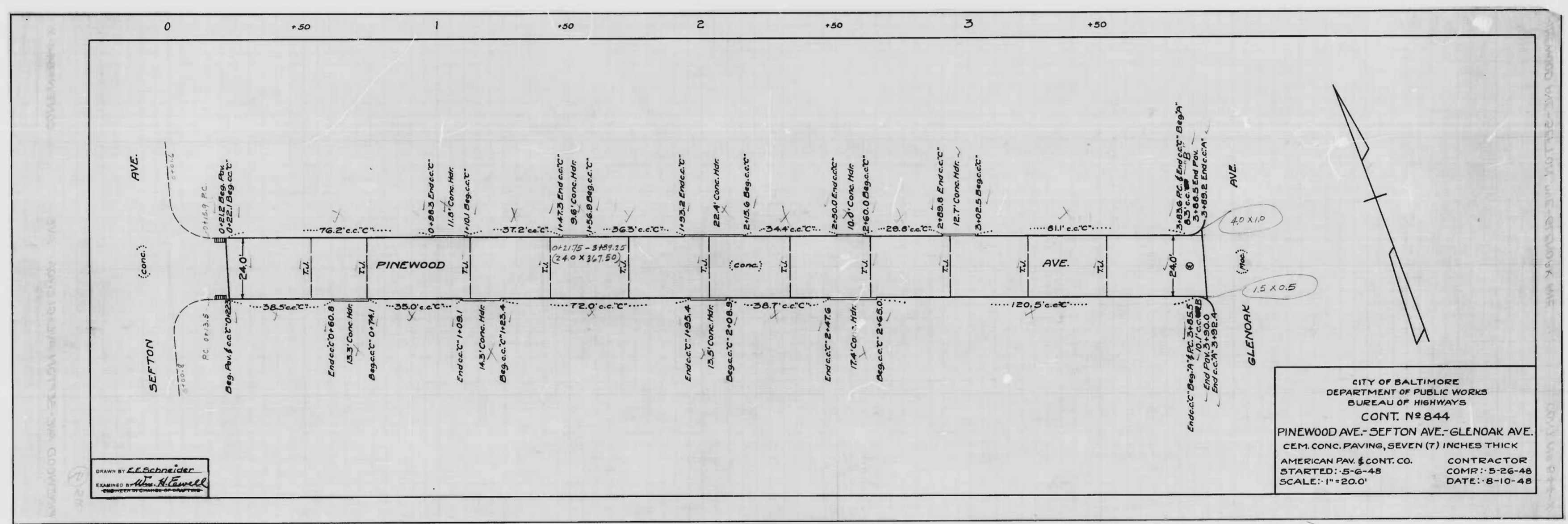
SEFTON AVE.

GLENOAK AVE.

CITY OF BALTIMORE
 DEPARTMENT OF PUBLIC WORKS
 BUREAU OF HIGHWAYS
 PROFILE OF
 PINEWOOD AVE-SEFTON AVE- GLENOAK AVE.

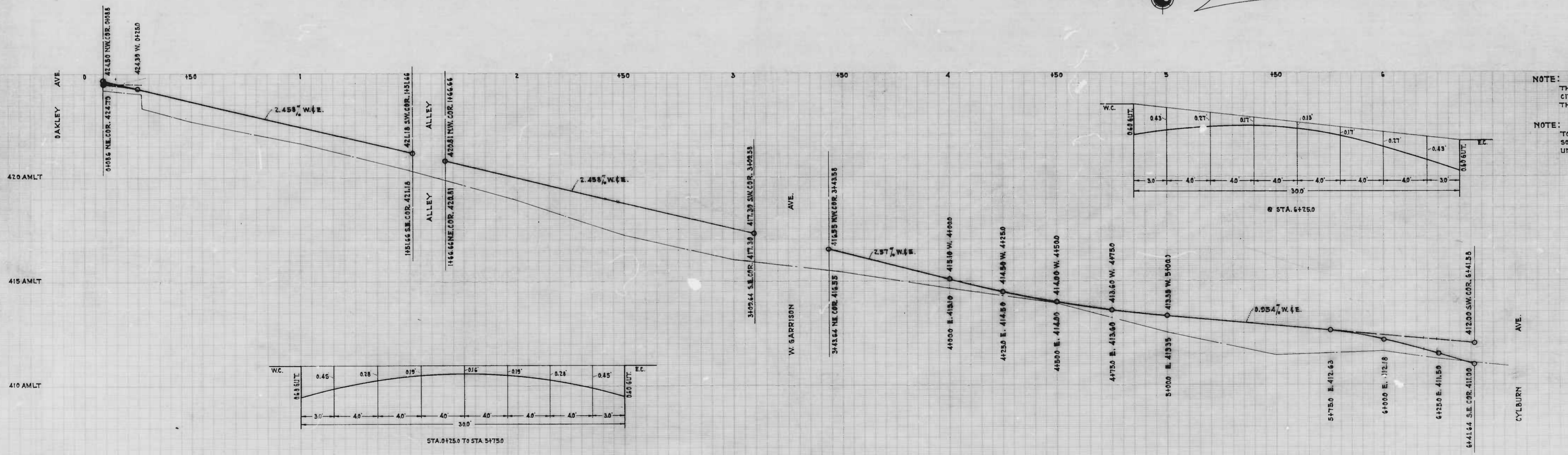
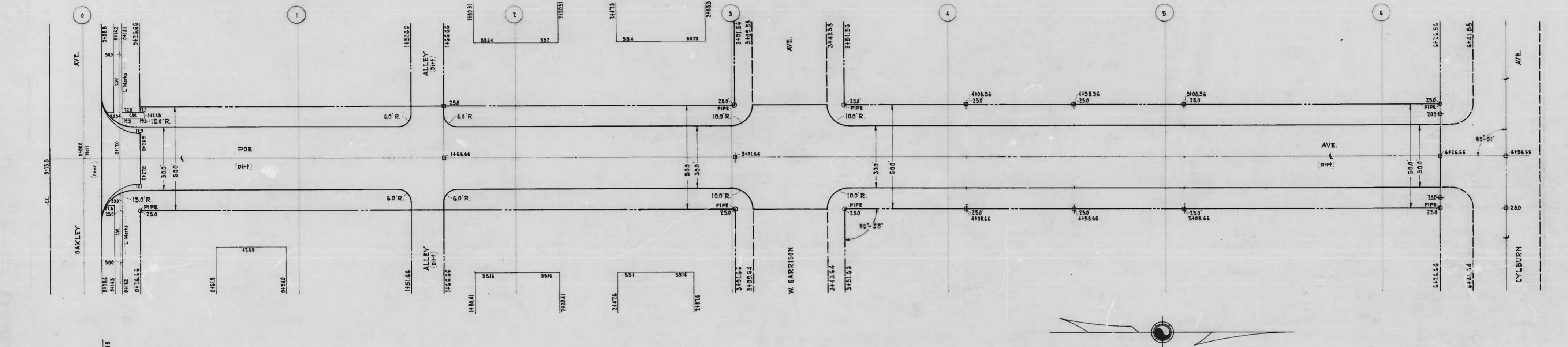
HOR: 1" = 20'
 VER: 1" = 2'
 SCALE: -
 CONT. NO. 64
 BOOK: X-106A
 DATE: 6-11-27
 APPROVED: *Henry Weiler*
 ASSOCIATE ENGINEER
 APPROVED: *Wm. D. Fisher*
 HIGHWAYS ENGINEER
 APPROVED: *Edward H. ...*
 ENGINEER OF SURVEYS
 APPROVED: *...*
 DIRECTOR OF PUBLIC WORKS

DRAWN BY E. Schneider
 CHECKED BY S. C. ...
 DATE: 6-11-27



DRAWN BY: E.E. Schneider
 EXAMINED BY: W.H. Howell

CITY OF BALTIMORE
 DEPARTMENT OF PUBLIC WORKS
 BUREAU OF HIGHWAYS
 CONT. N^o 844
 PINWOOD AVE.- SEFTON AVE.- GLENDOAK AVE.
 CEM. CONC. PAVING, SEVEN (7) INCHES THICK
 AMERICAN PAV. & CONT. CO. CONTRACTOR
 STARTED: 5-6-48 COMP: 5-26-48
 SCALE: 1"=20.0' DATE: 8-10-48



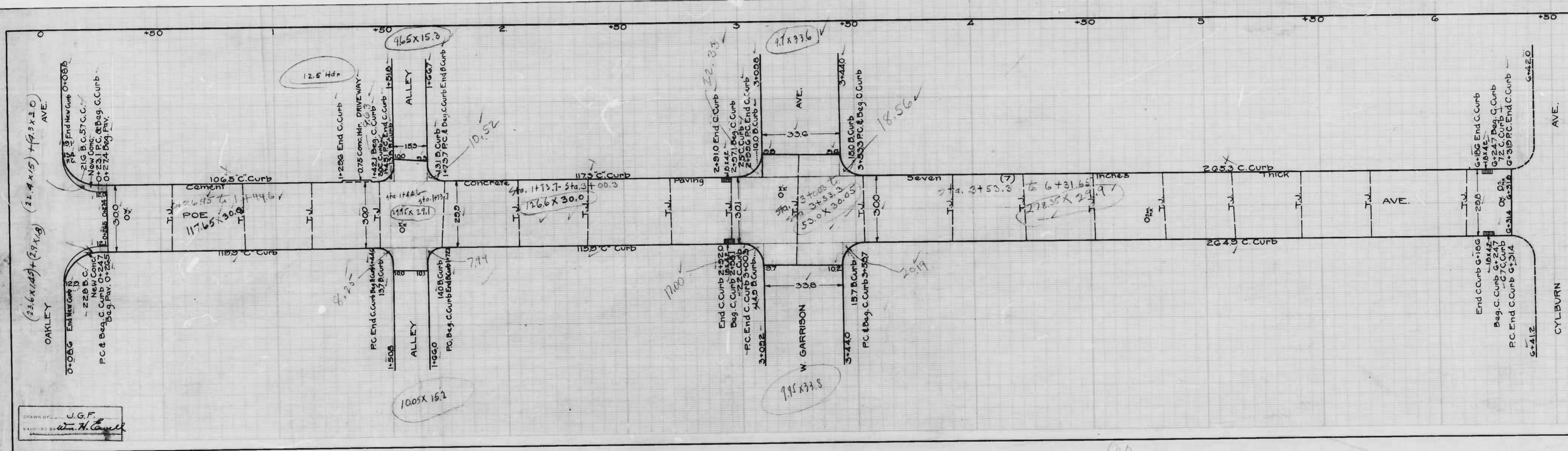
NOTE:
THE ISSUANCE OF THIS PLAN & PROFILE DOES NOT
CITY TO THE ACCEPTANCE AND/OR IMPROVEMENT
THOROUGHFARES SHOWN THEREON.

NOTE:
TO BE CEMENT CONCRETE PAVING 4" IN DEPTH.
SOIL STABILIZATION MATERIAL AND/OR
UNDERDRAINS ARE NOT REQUIRED.

CITY OF BALTIMORE
DEPARTMENT OF PUBLIC
WORKS
BUREAU OF HIGHWAYS
PLAN & PROFILE
POE AVE. - OAKLEY AVE. TO
WYBURN AVE.
PL. NO. 1-200
SCALE: HOR. - 1"=200'
VER. - 1"=20'

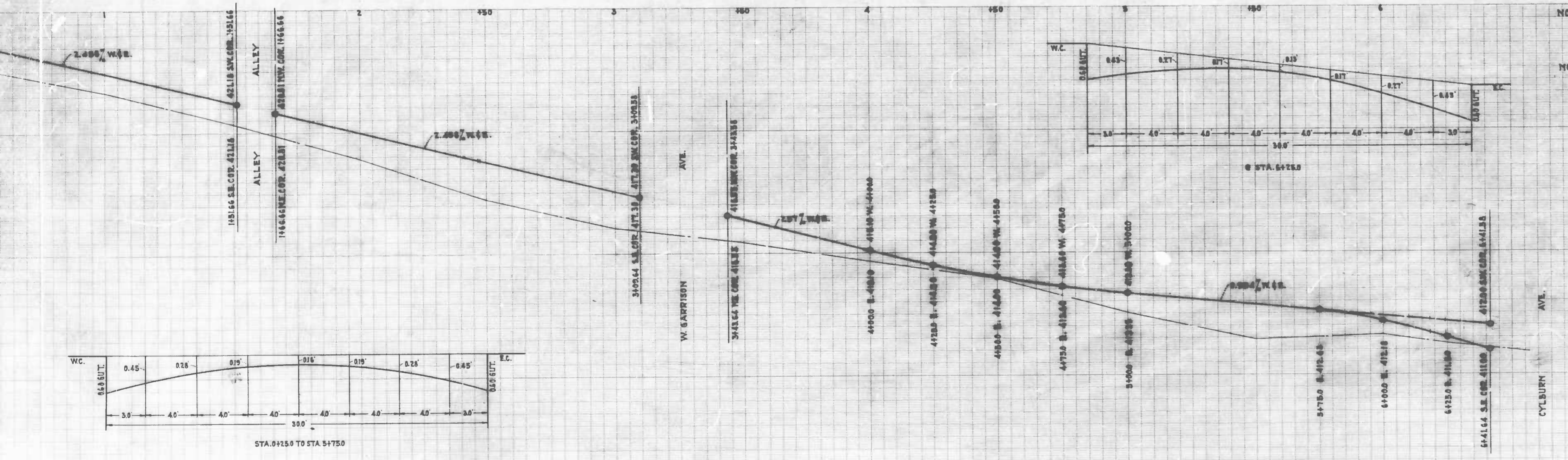
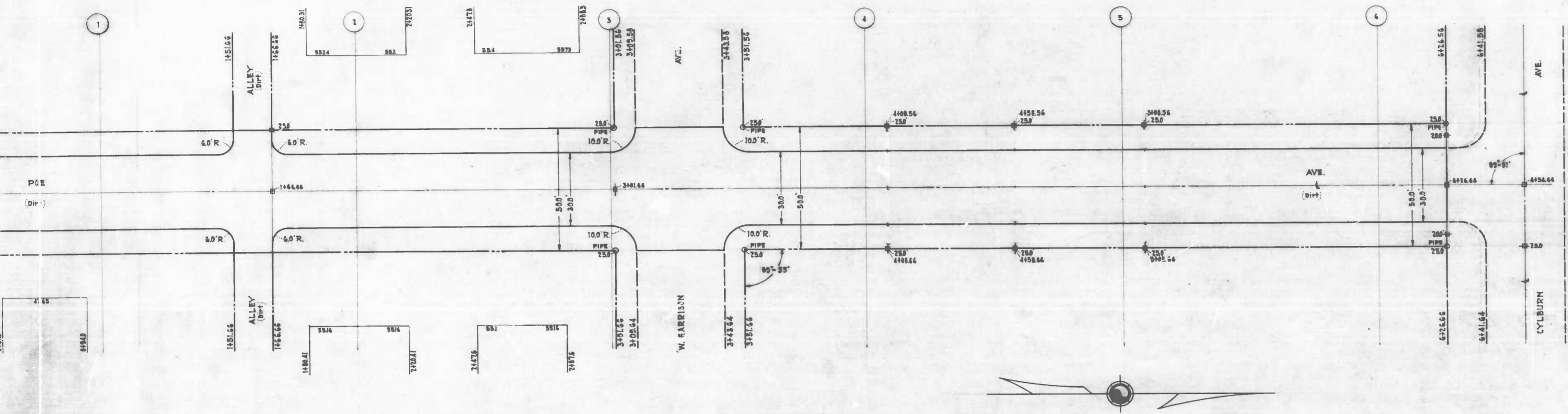
APPROVED:
Edward J. Hester
ASSOCIATE ENGINEER
APPROVED:
Edward J. Hester
ENGR. PLANS & SURVEYS.

D. Marley
S. J. Curran



DRAWN BY J.G.F.
 EXAMINED BY *W.H. Connel*

CITY OF BALTIMORE
 DEPARTMENT OF PUBLIC WORKS
 BUREAU OF HIGHWAYS
 CONTRACT NO. 844
 POE AVE - OAKLEY AVE - CYLBEURN AVE
 CEMENT CONCRETE PAVING SEVEN (7) FEET
 AMERICAN PAV. & CON. CO. CONTRACT NO. 844
 STARTED 9-24-47 COMPLETE 1-1-48
 SCALE: 1"=200' JANUARY 1948

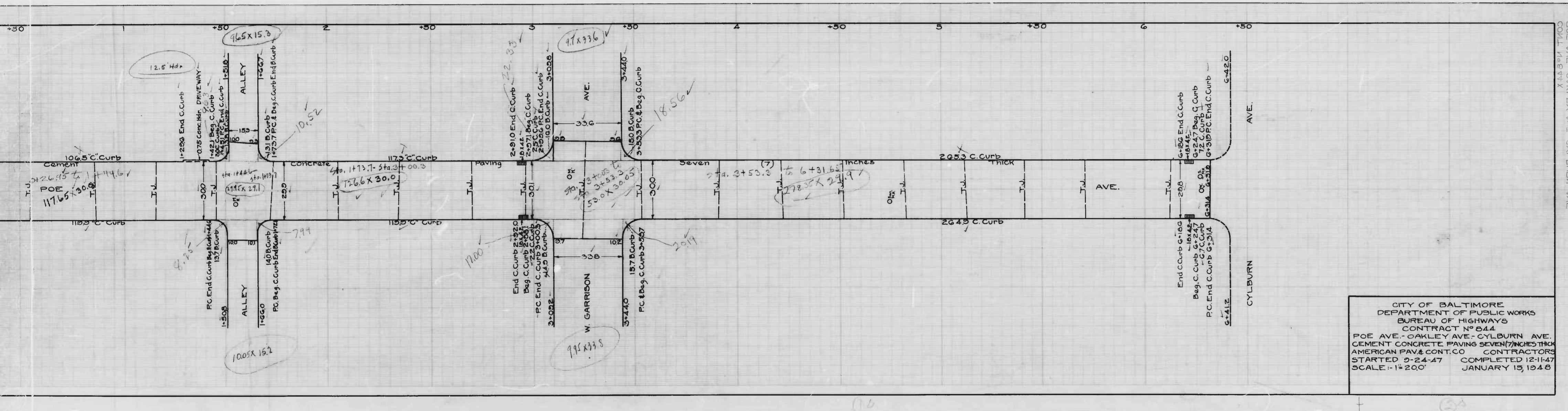


NOTE:
THE SLOPE OF THIS PLAN & PROFILE DOES NOT COMMIT THE CITY TO THE ACCEPTANCE AND IMPROVEMENT OF ANY THROUGHFARES SHOWN THEREON.

NOTE:
TO BE CEMENT CONCRETE PAVING 1" H. DEPTH SOIL STABILIZATION MATERIAL AND/OR UNDERDRAINS ARE NOT REQUIRED.

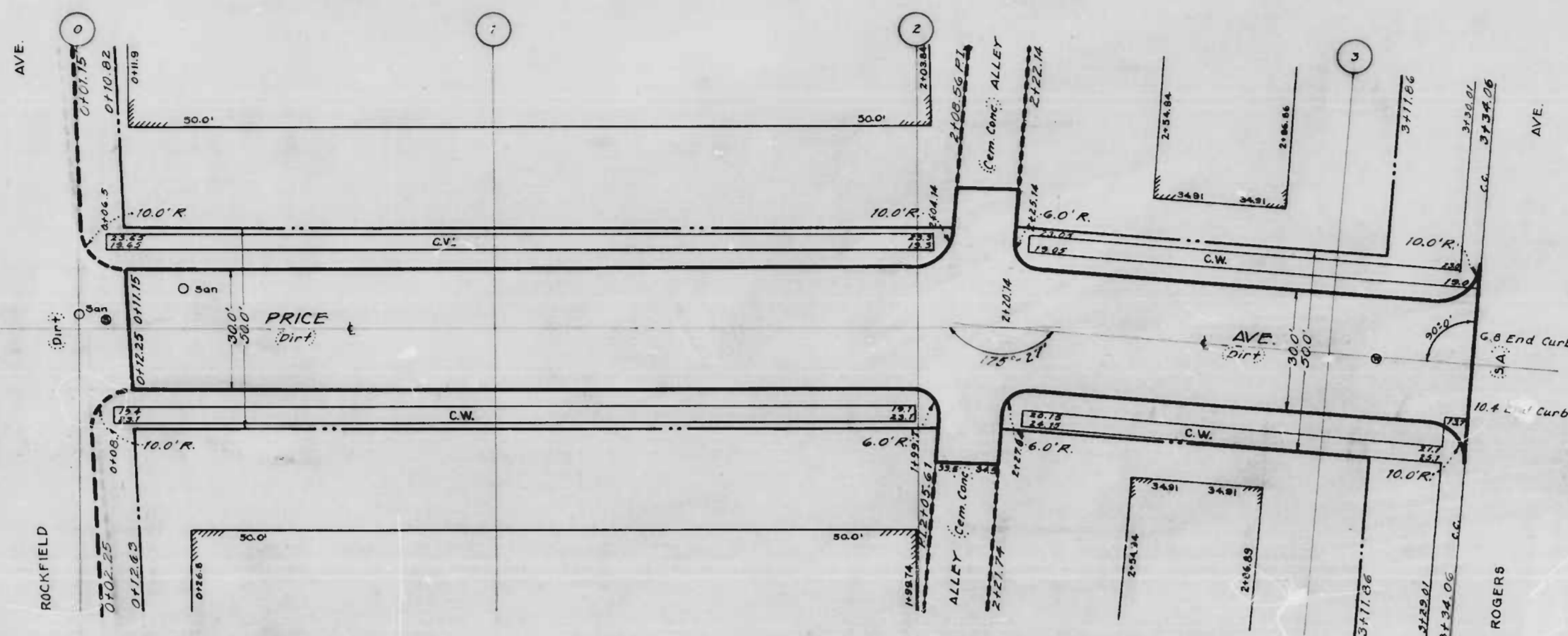
CITY OF BALTIMORE
DEPARTMENT OF PUBLIC WORKS
BUREAU OF HIGHWAYS
PLAN & PROFILE
POE AVE. - OAKLEY AVE. TO CYLBURN AVE.
PLAN: 1" = 20'
SCALE: HOR: 1" = 20'
VER: 1" = 2'
BOOK NO. MISC. 64
CONT. NO. 844
DATE: MAY 1, 1947

APPROVED: *Henry M. ...* ASSOCIATE ENGINEER
APPROVED: *W. J. ...* HIGHWAYS ENGINEER
APPROVED: *Edward ...* ENGR. PLANS & SURVEYS
APPROVED: *Charles ...* CHIEF ENGINEER

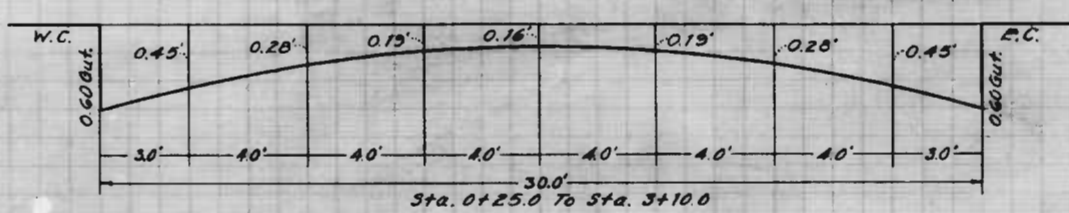


CITY OF BALTIMORE
 DEPARTMENT OF PUBLIC WORKS
 BUREAU OF HIGHWAYS
 CONTRACT NO 644
 POE AVE.-OAKLEY AVE.-CYLBURN AVE.
 CEMENT CONCRETE PAVING SEVEN (7) INCHES THICK
 AMERICAN PAV.& CONT.CO CONTRACTORS
 STARTED 9-24-47 COMPLETED 12-1-47
 SCALE - 1"=20' JANUARY 13, 1948

POE AVE.-OAKLEY AVE.-CYLBURN AVE.
 CONT. 11-5-47 X



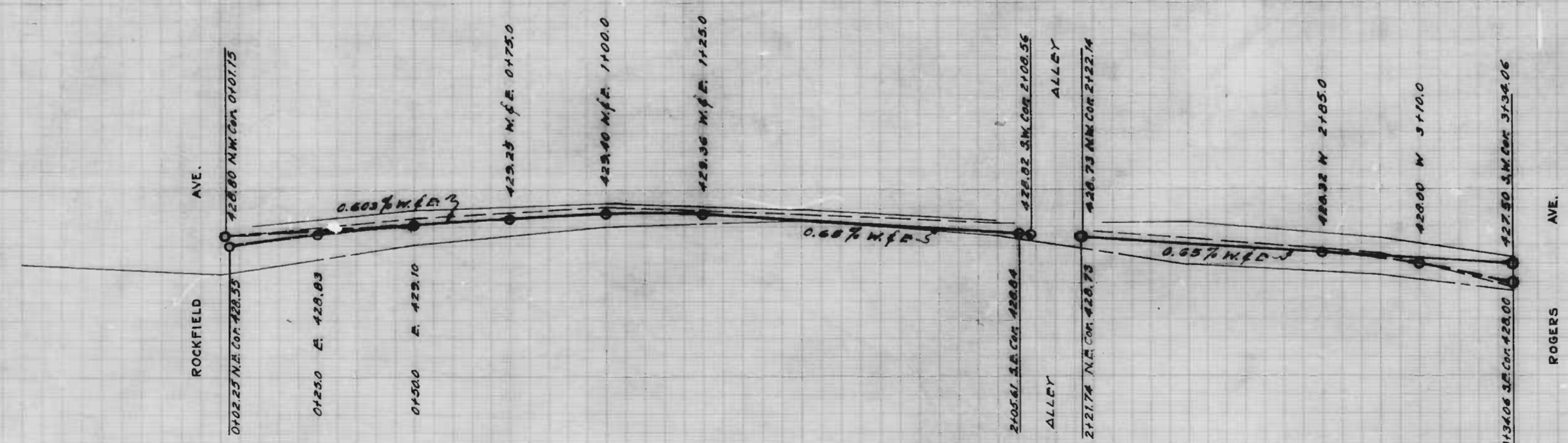
-50 0 +50 1 +50 2 +50 3 +50



NOTE: The issuance of this plan & profile does not commit the City to the acceptance and/or improvement of any thoroughfares shown thereon.

NOTE: To be cement concrete paving 7" in depth. Soil stabilization material and/or underdrains are not required.

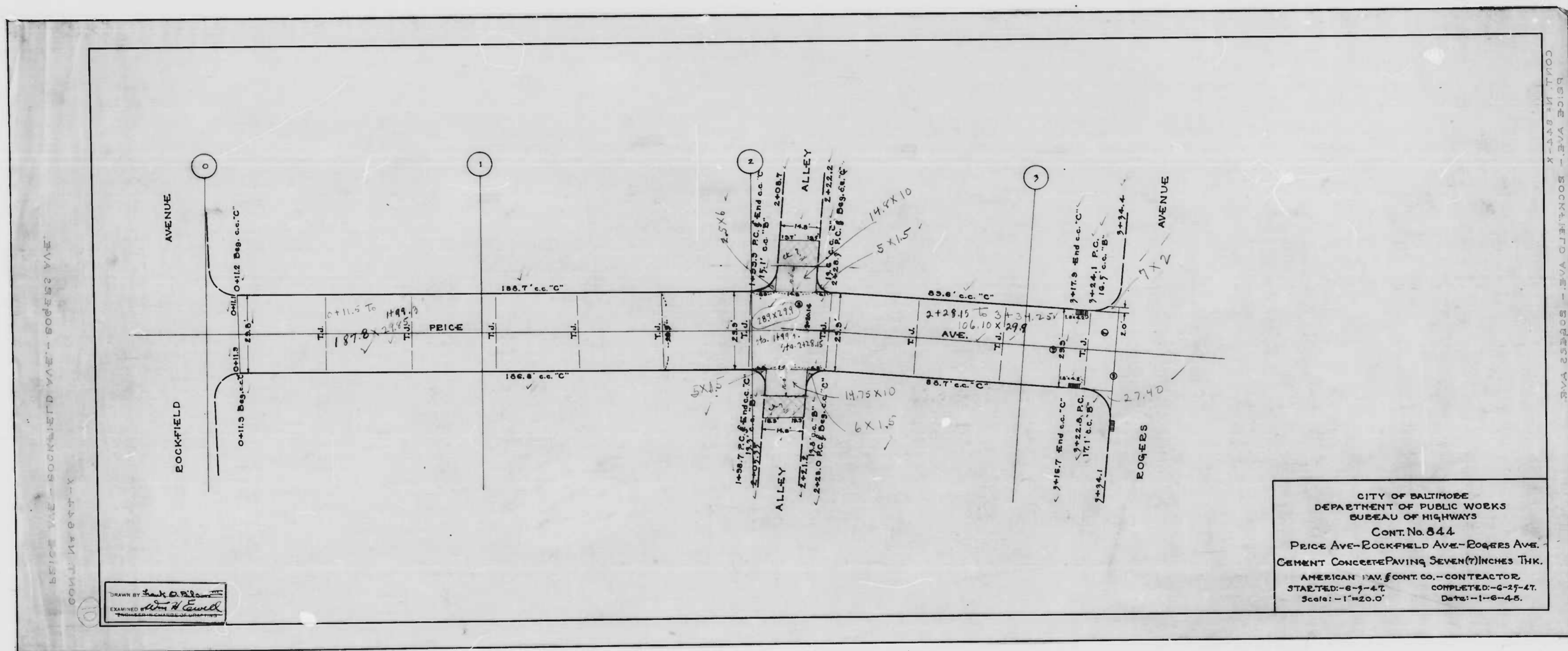
435 AMLT
430 AMLT
425 AMLT

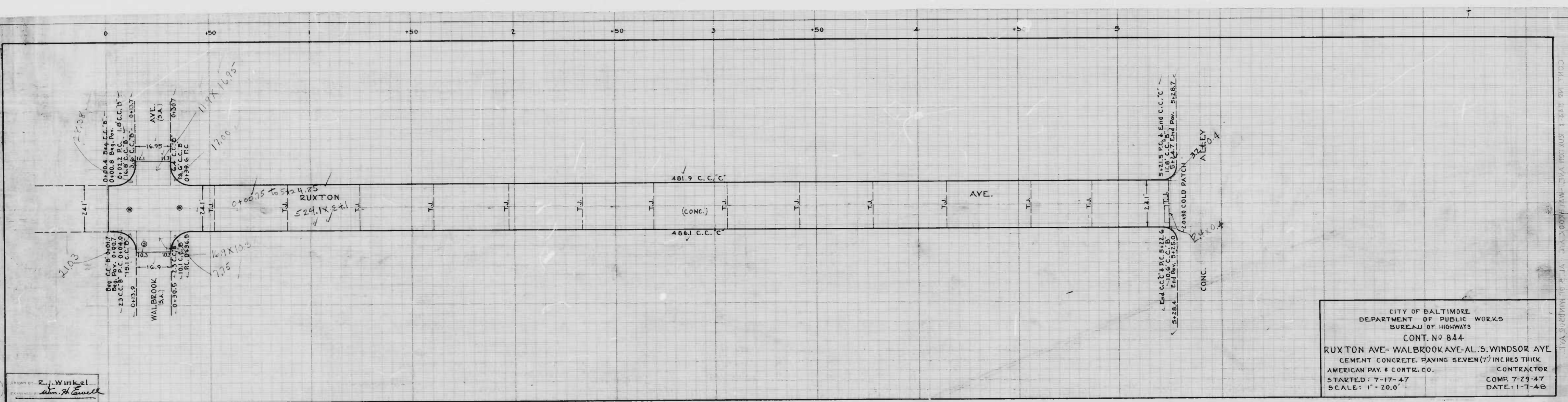


DRAWN BY: E.W.S. & J.L.P.
CHECKED BY: S.J. Curran

CITY OF BALTIMORE
DEPARTMENT OF PUBLIC WORKS
BUREAU OF HIGHWAYS
PLAN & PROFILE
PRICE AVE. - ROCKFIELD AVE. - ROGERS AVE.
CONT. NO. 844
SCALES: PLAN: 1"=20.0' BOOK NO. X-160
PROFILE: 1"=20.0' DATE: MAY 14, 47
VER: 1"=2.0'

APPROVED: *Henry Weisberg*
ASSOCIATE ENGINEER
APPROVED: *W. J. Fisher*
HIGHWAYS ENGINEER
APPROVED: *Frank J. Hester*
ENGR. PLANS & SURVEYS
APPROVED: *Walter R. Smith*
CHIEF ENGINEER





CITY OF BALTIMORE
 DEPARTMENT OF PUBLIC WORKS
 BUREAU OF HIGHWAYS
 CONT. NO 844
 RUXTON AVE- WALBROOK AVE-AL. S. WINDSOR AVE.
 CEMENT CONCRETE PAVING SEVEN (7) INCHES THICK
 AMERICAN PAV. & CONTR. CO. CONTRACTOR
 STARTED: 7-17-47 COMP. 7-29-47
 SCALE: 1" = 20.0' DATE: 1-7-48

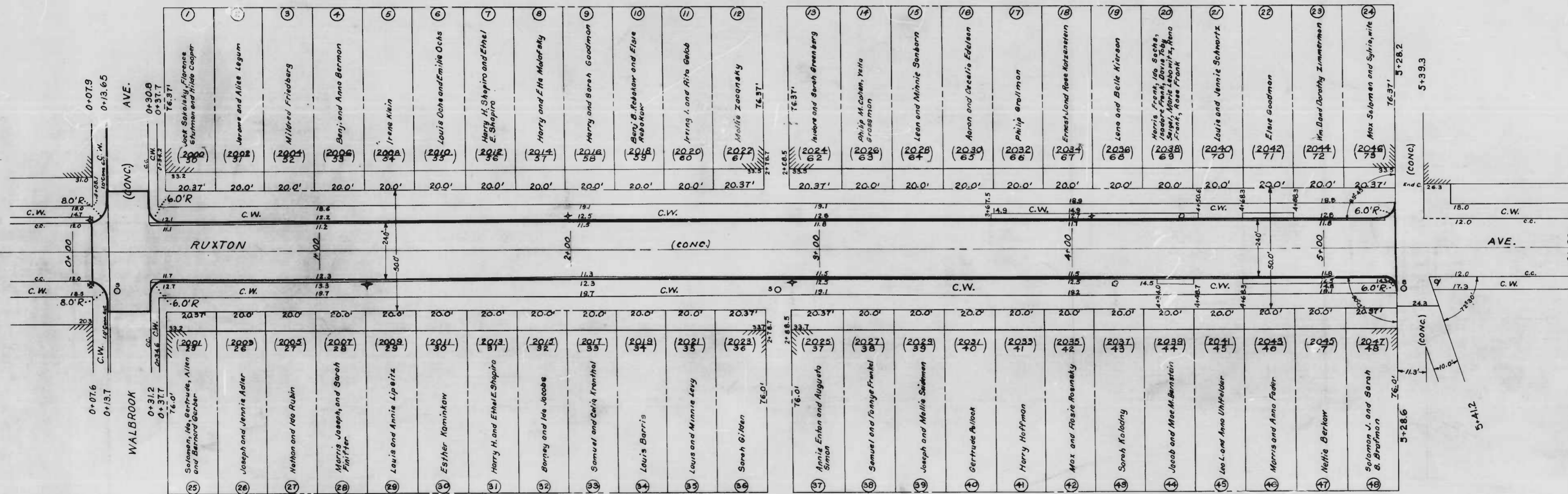
DESIGNED BY R. J. Winkel
 DRAWN BY Wm. H. Sewell

CONT. NO 844 - 13
 RUXTON AVE- WALBROOK AVE-AL. S. WINDSOR AVE.
 CEMENT CONCRETE PAVING SEVEN (7) INCHES THICK
 AMERICAN PAV. & CONTR. CO. CONTRACTOR
 STARTED: 7-17-47 COMP. 7-29-47
 SCALE: 1" = 20.0' DATE: 1-7-48

WARD - 15

SECTION - 18

BLOCK - 3214-62-A



WARD - 15

SECTION - 18

BLOCK - 3214-62-A

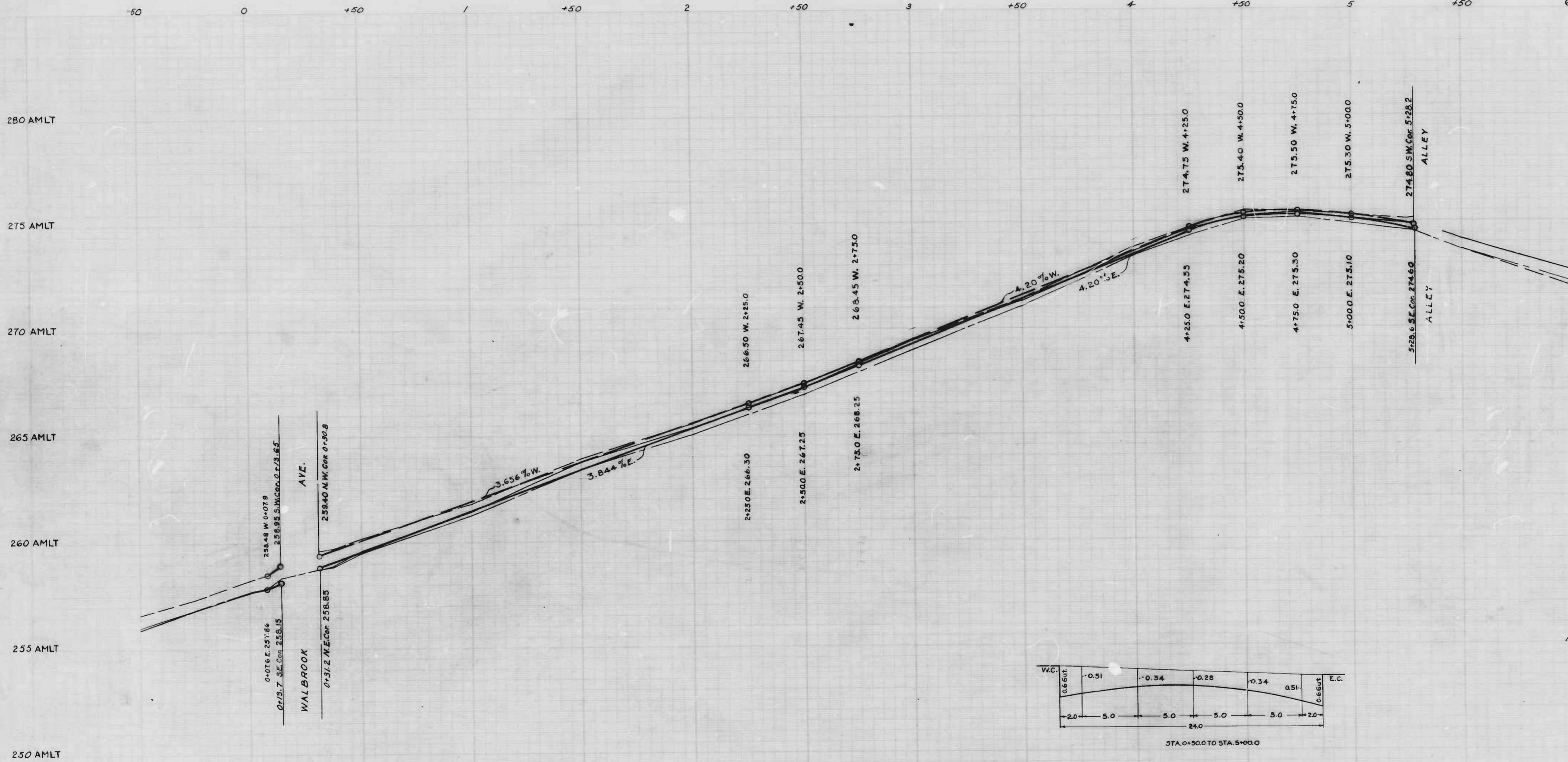
To Be Cement Concrete Paving Seven (7) Inches Thick Stabilization Materials and/or Underdrains are not

(N^o) PLAT N^o
 (N^o) HOUSE OR DEV. LOT N^o
 APPEAL TAX COURT LOT N^o
 WARD - 15
 SECTION - 18
 BLOCK - 3214-62 A

FILED May 1, 1947
 HIGHWAY ENGINEER
 PER *[Signature]*

CITY OF BALTIMORE
 DEPARTMENT OF PUBLIC WORKS
 BUREAU OF HIGHWAYS
 ASSESSMENT PLAT N^o 53
 RUXTON AVE - WALBROOK AVE - ALLEY SOUTH
 SCALE: 1" = 20.0'
 CONT. N^o 844
 APPROVED
[Signature]
 ASSOCIATE ENGINEER
 APPROVED
[Signature]
 ENGR. OF SURVEYS

E. S. Schneider
 1300 N. ...



BY: E. Schneider
S. B. A.

CITY OF BALTIMORE
DEPARTMENT OF PUBLIC WORKS
BUREAU OF HIGHWAYS

PROFILE OF
RUXTON AVE.-WALBROOK AVE.-ALLEY

CONT. NO. 844

SCALE: HOR: 1" = 20'
VER: 1" = 2'

APPROVED: *Henry Wisberg*
ASSOCIATE ENGINEER

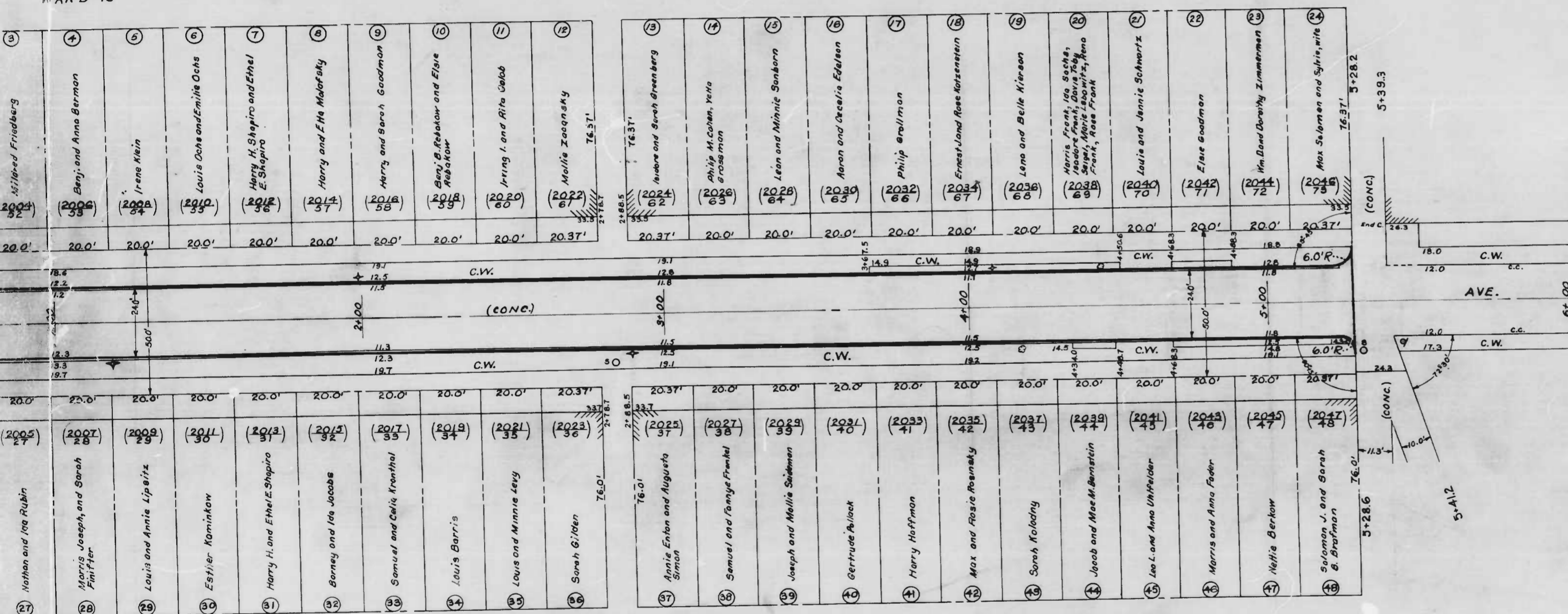
APPROVED: *Edward J. Wachs*
ENGR. OF SURVEYS

DATE: _____
BY: _____
HIGHWAY DIRECTOR

WARD - 15

SECTION - 18

BLOCK - 3214-62-A



WARD - 15

SECTION - 18

BLOCK - 3214-62-A

To Be Cement Concrete Paving Seven (7) Inches Thick. Soil Stabilization Materials and/or Underdrains are not required.

PLAT N°
 HOUSE OF DEVL. LOT N°
 APPEAL TAX COURT LOT N°
 WARD - 15
 SECTION - 18
 BLOCK - 3214-62A

FILED May 1, 1947
 HIGHWAY ENGINEER
 PER J. Lipman

CITY OF BALTIMORE
 DEPARTMENT OF PUBLIC WORKS
 BUREAU OF HIGHWAYS
 ASSESSMENT PLAT N° 590-A
 RUXTON AVE-WALBROOK AVE-ALLEY SOUTH OF WINDSOR AVE.

SCALE: 1"=20'
 CONT. N° 844

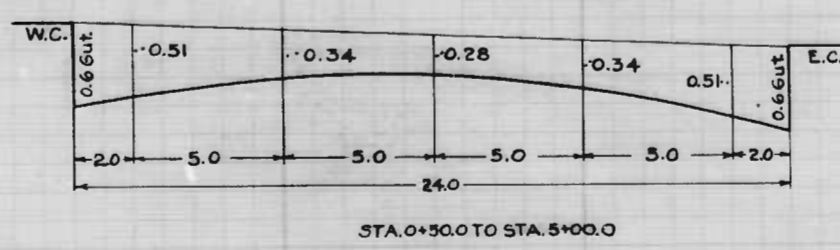
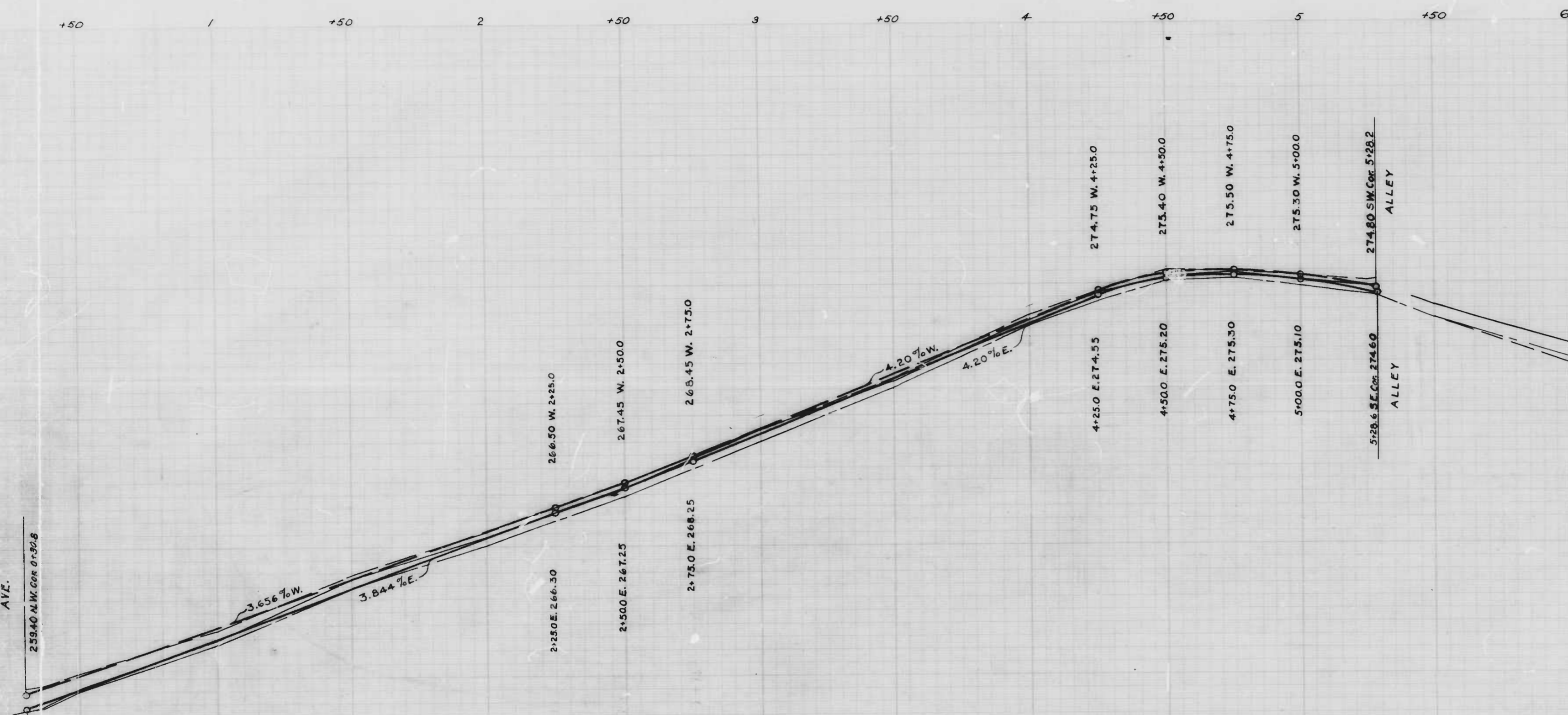
BOOK N° X213
 DATE: APRIL 29, 1947

APPROVED
 Henry Winkler
 ASSOCIATE ENGINEER

APPROVED
 HIGHWAYS ENGINEER

APPROVED
 Edward J. Wacker
 ENGR. OF SURVEYS

APPROVED
 DIRECTOR OF PUBLIC WORKS



CITY OF BALTIMORE
 DEPARTMENT OF PUBLIC WORKS
 BUREAU OF HIGHWAYS
 PROFILE OF
 RUXTON AVE.-WALBROOK AVE.-ALLEY SOUTH OF WINDSOR AVE.

SCALE: HOR: 1" = 20'
 VER: 1" = 2'
 CONT. NO. 844
 BOOK: X213
 DATE: JUNE 6, 1947

APPROVED
Henry Wisberg
 ASSOCIATE ENGINEER
 APPROVED
W. F. Fisher
 HIGHWAYS ENGINEER
 APPROVED
Edward W. Hatcher
 ENGR. OF SURVEYS
 APPROVED
John R. Smith
 DIRECTOR OF PUBLIC WORKS