

- (1) (2.97 X 0.15) ✓
- (2) (3.0 X 0.45) ✓
- (3) (1.0 X 1.0) ✓
- (4) (1.0 X 1.0) ✓
- (5) (1.0 X 3.3) ✓
- (6) (1.0 X 4.9) ✓
- (7) (1.0 X 6.8) ✓
- (8) (1.0 X 8.9) ✓
- (9) (1.0 X 11.5) ✓
- (10) (1.0 X 14.5) ✓
- (11) (1.0 X 17.5) ✓
- (12) (1.0 X 21.0) ✓
- (13) (1.0 X 25.1) ✓

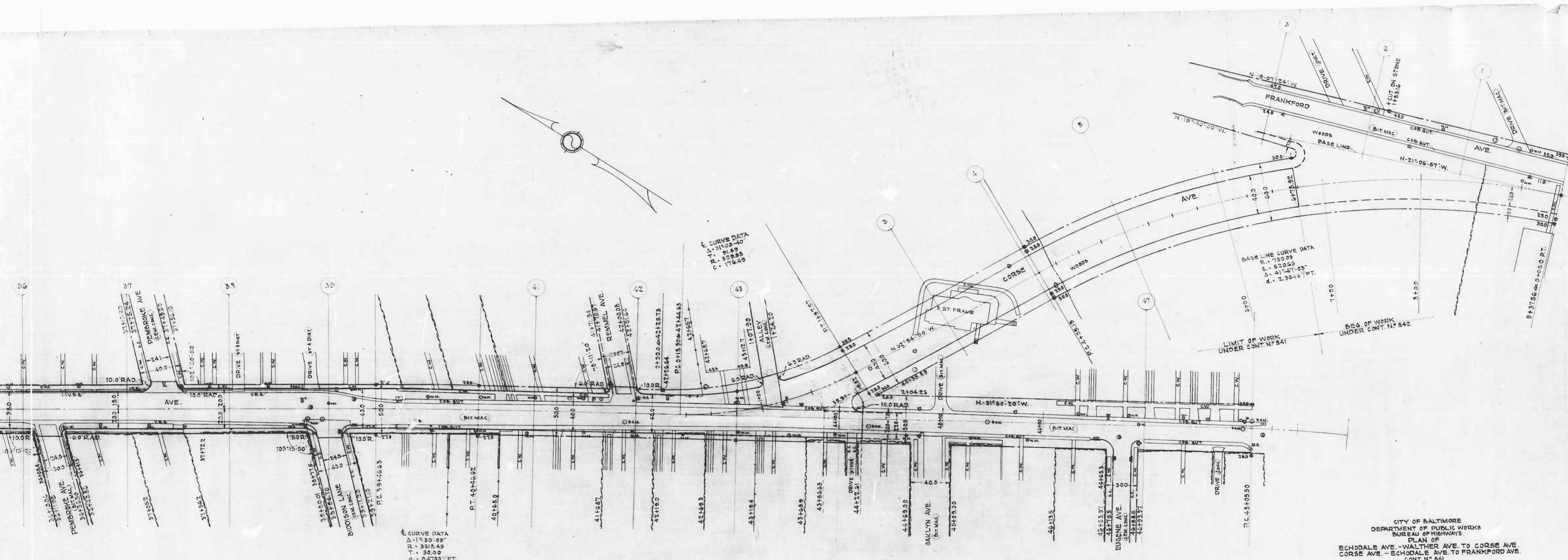
- (A) (3.0 X 8) ✓
- (B) (3.5 X 3.5) ✓
- (C) (4.0 X 7.8) ✓
- (D) (5.0 X 5.0) ✓

Do No Destroy
Used to Work Final
Estimate on Echodale Ave
& Coarse Ave

CITY OF BALTIMORE
 DEPARTMENT OF PUBLIC WORKS
 BUREAU OF HIGHWAYS
 CONT. NO. 841
 ECHODALE AVE - WALTHER AVE - COARSE AVENUE
 COARSE AVE - ECHODALE AVE - FRANKFORD AVENUE
 SHEET ASPHALT PAVING, 1 1/2" WEARING SURFACE,
 1 1/2" BINDER, ON AN EIGHT (8) INCH CONCRETE BASE
 ARUNDEL CONSTRUCTION Co. - CONTRACTOR
 STARTED 3/15/48 COMPLETED 6/18/48
 SCALE 1"=200' DATE: JAN. 7, 1948

COARSE AVE - ECHODALE AVE - FRANKFORD AVE
 ECHODALE AVE - WALTHER AVE - COARSE AVE
 CONT. 841 X

Shoff



CURVE DATA
 Δ = 1° 39' 00"
 R = 2915.45
 T = 50.00
 d = 0.4759 / FT.

Note - Echodale Ave. - E.B.L. Walther Ave. To Corse Ave.
 To be Sheet Asphalt Paving 1 1/2" Wearing Surface 1 1/2"
 Binder on an 8" Cement Concrete Base. Soil Materials or
 Underdrains Will Not Be Required.
 Corse Ave. - Echodale Ave. To Frankford Ave.
 To be Sheet Asphalt Paving 1 1/2" Wearing Surface 1 1/2"
 Binder on an 8" Cement Concrete Base and Two Inches
 of Stone Dust Screenings Underdrains Will Not Be Required.

BASE LINE CURVE DATA
 P.I. = 150.00
 C. = 50.00
 Δ = 41° 47' 05"
 d = 2.3649 / FT.

CITY OF BALTIMORE
 DEPARTMENT OF PUBLIC WORKS
 BUREAU OF HIGHWAYS
 PLAN OF
 ECHODALE AVE. - WALTHER AVE. TO CORSE AVE.
 CORSE AVE. - ECHODALE AVE. TO FRANKFORD AVE.
 CONT. N° 841

SCALE - 1" = 400'
 BOOK N° X-196
 MAY 23, 1947

APPROVED - *Henry W. ...*
 ASSOCIATE ENGINEER

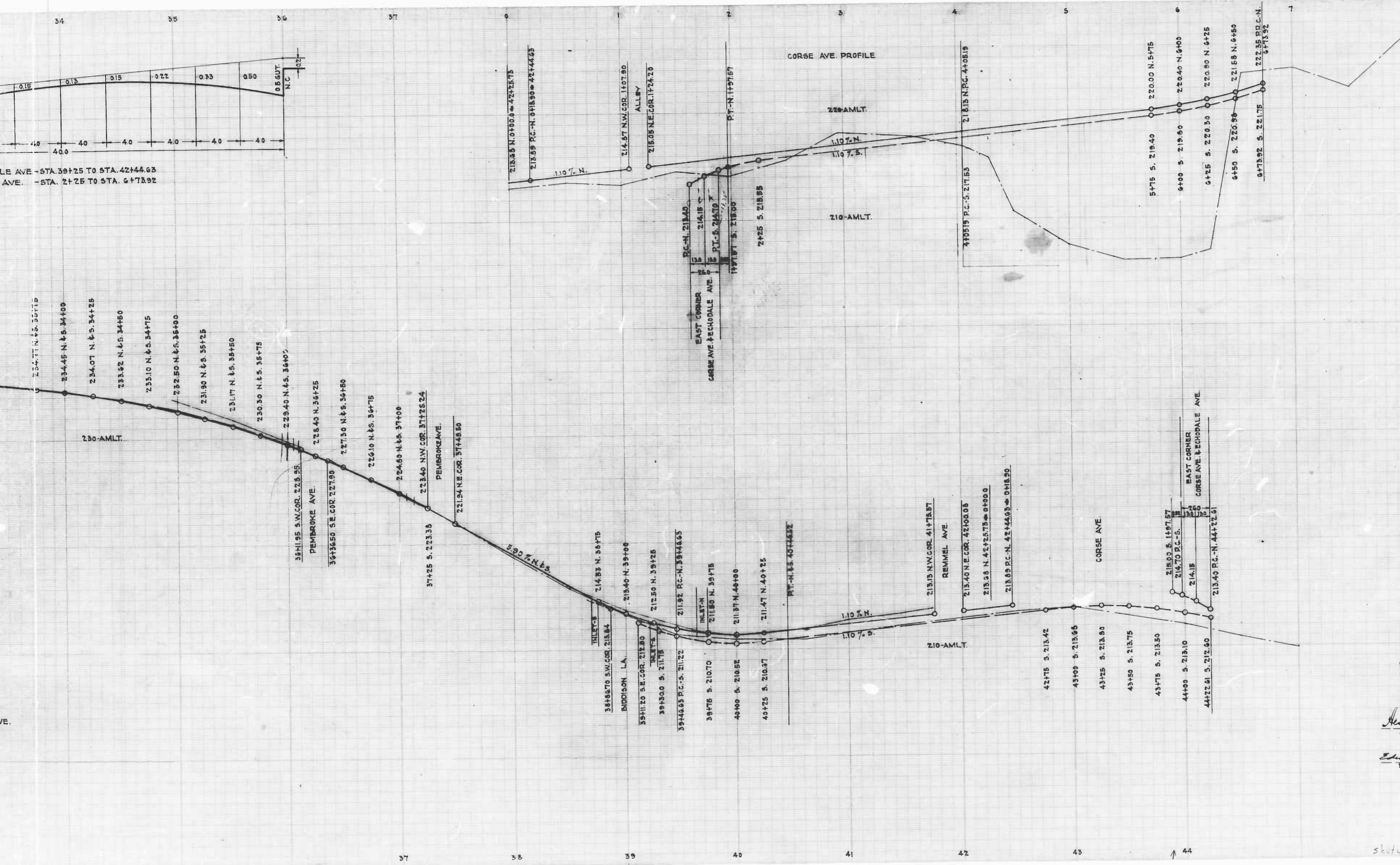
APPROVED - *...*
 HIGHWAYS ENGINEER

APPROVED - *...*
 ENGINEER OF SURVEYS

APPROVED - *...*
 DIRECTOR OF PUBLIC WORKS

REVISED - 10-25-47

shoty



CITY OF BALTIMORE
 DEPARTMENT OF PUBLIC WORKS
 BUREAU OF HIGHWAYS
 PROFILE OF
 ECHODALE AVE. - WALTER AVE. TO CORSE AVE.
 CORSE AVE. - ECHODALE AVE. TO FRANKFORD AVE.
 CONT. N° 841

SCALE - HOR. - 1" = 40'
 VER. - 1" = 40'

APPROVED: *Avery Wisberg* ASSOCIATE ENGINEER
 APPROVED: *W. J. Zwickler* HIGHWAYS ENGINEER
 APPROVED: *Edward K. Williams* ENGINEER OF SURVEYS
 APPROVED: *Charles R. Smith* DIRECTOR OF PUBLIC WORKS

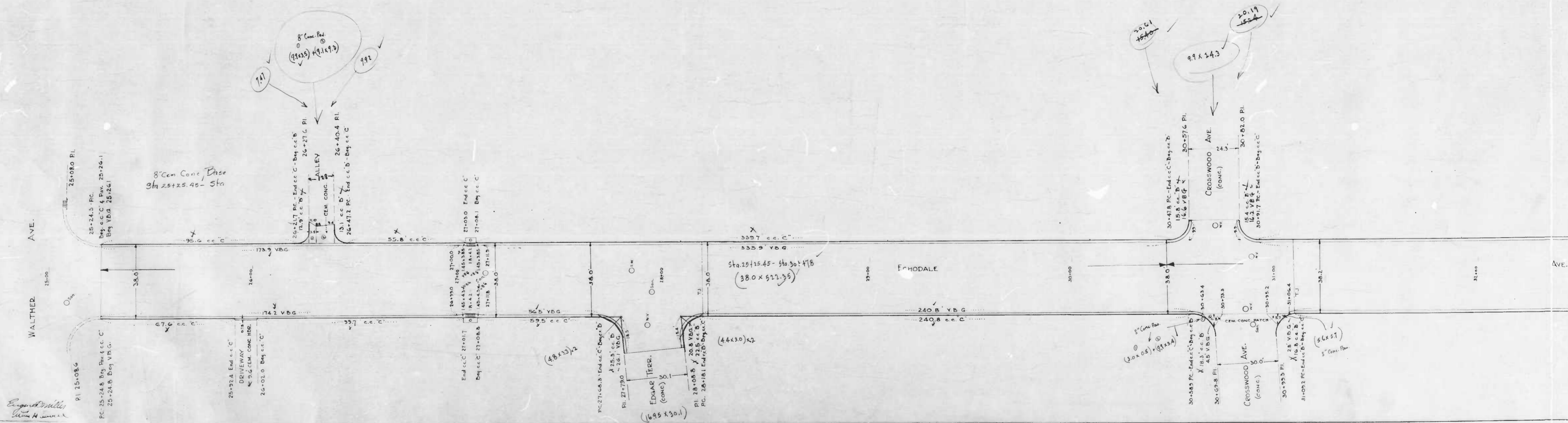
REVISED 10-29-47

shot 4

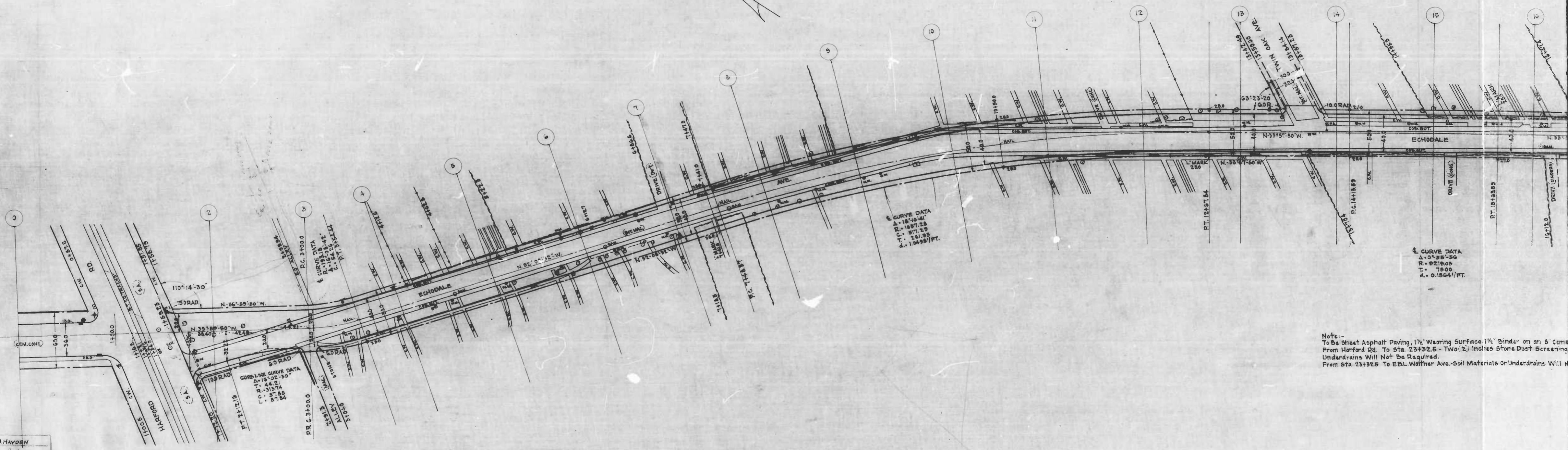
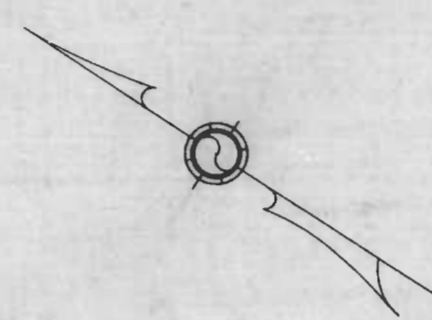
Do Not Destroy

10 15/3
9/3

RECORDS UNIT - BUILDINGS UNIT - COBBLE W/1
COHL 871-X



shot



CURVE DATA
 Δ = 18° 10' 44"
 R = 1807.25
 C = 271.25
 T = 241.33
 d = 1.0495/FT.

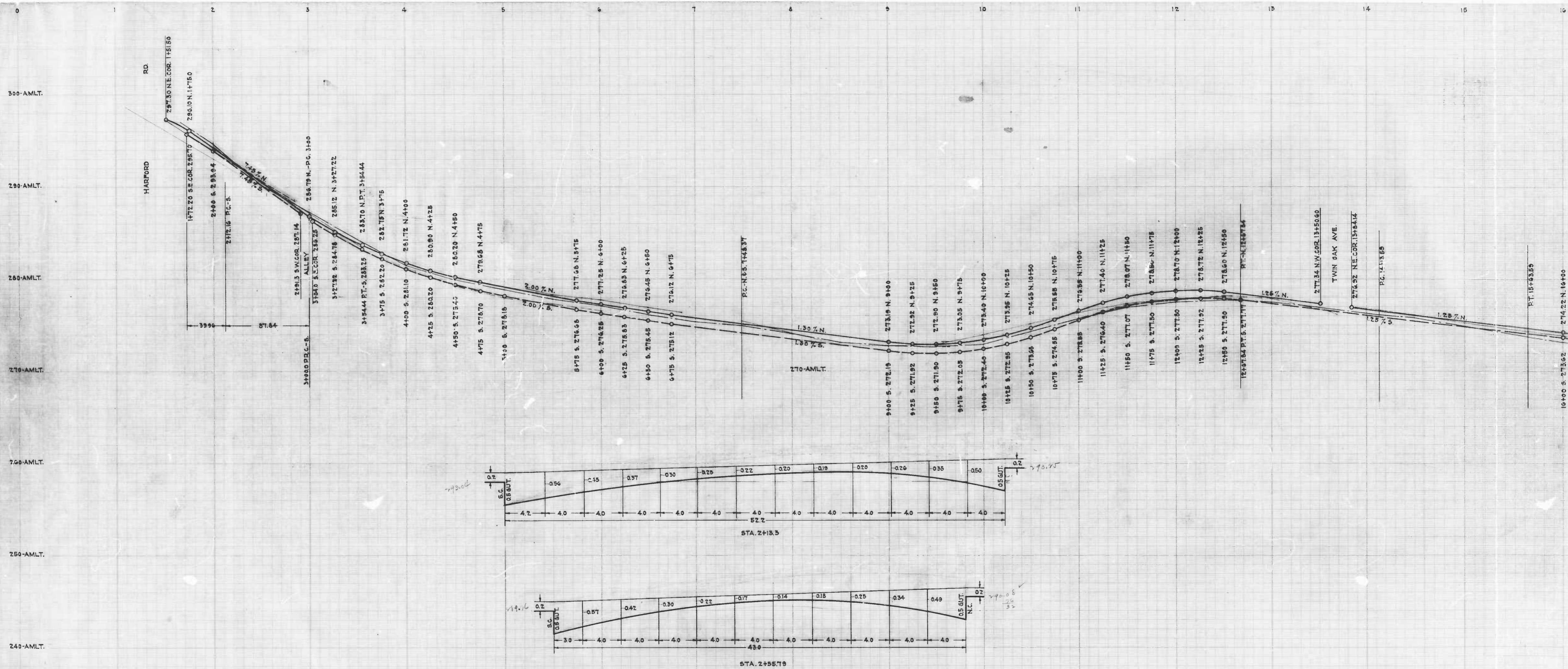
CURVE DATA
 Δ = 0° 55' 50"
 R = 5218.00
 T = 18.00
 d = 0.1584/FT.

NOTE:
 PLUSSES FOR S.G.L. ARE BACKED FROM P.R.C.
 STA. 3+00 TO HARFORD RD ALONG S.C.L.

Notes -
 To Be Street Asphalt Paving, 1 1/2" Wearing Surface, 1 1/2" Binder on an 8" Course
 From Harford Rd. to Sta. 23+32.5 - Two (2) Inches Stone Dust Screening
 Undrains Will Not Be Required.
 From Sta. 23+32.5 To EBL Watter Ave. Soil Materials or Underdrains Will Not

DESIGNED BY J.J. HAYDEN
 ENGINEER
 S. L. BARNES
 ENGINEER IN CHARGE OF DRAWING

Sheet



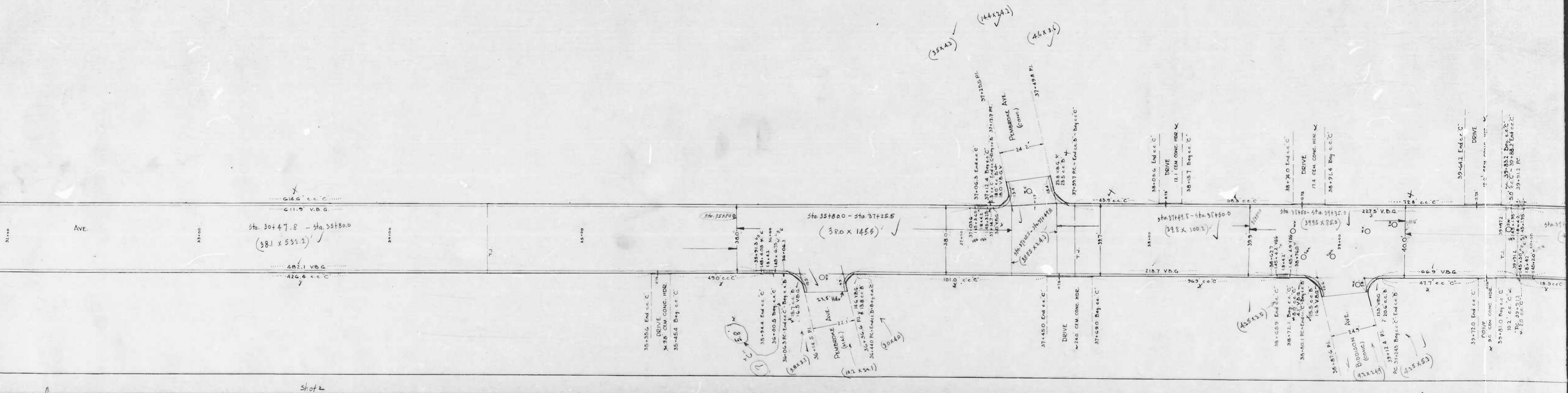
DRAWN BY J. J. HAYDEN
 EXAMINED BY S. P. Burns
 ENGINEER IN CHARGE OF DESIGN

Sheet

840/841

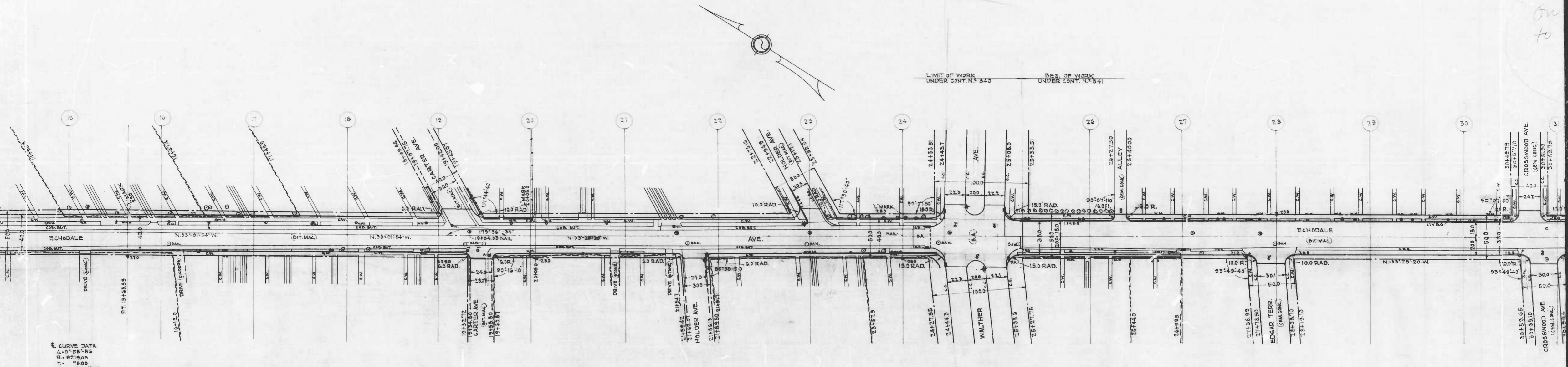
3

Do Not Destroy this Print
Used to work final estimate
on Echodale Ave & Coarse Ave



840/841

1



CURVE DATA
 Δ = 0° 56' 56"
 R = 9018.05
 T = 78.00
 Δ = 0.15641/FT

Asphalt Paving, 1 1/2" Wearing Surface, 1 1/2" Binder on an 8" Cement Concrete Base.
 Rd. Th. Sta. 23+32.5 - Two (2) Inches Stone Dust Screenings Will Be Required.
 Will Not Be Required.
 3+32.5 To E.P.L. Walther Ave. - Soil Materials or Underdrains Will Not Be Required.

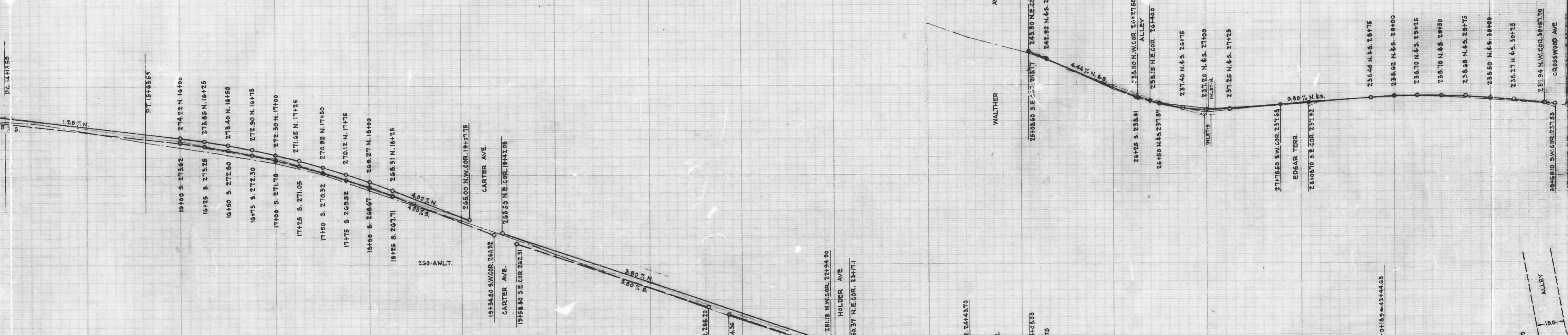
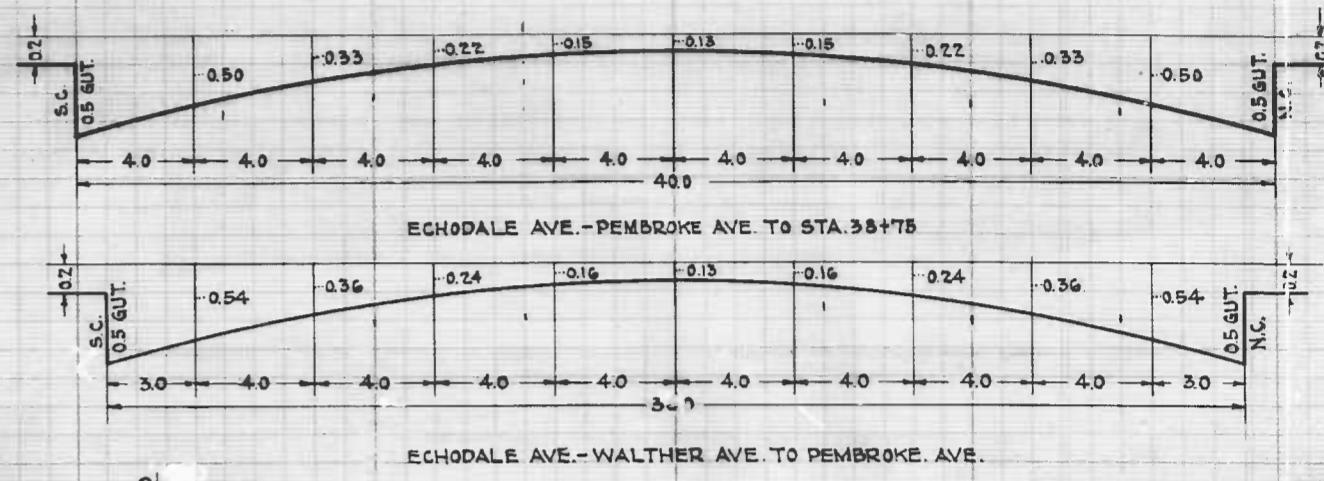
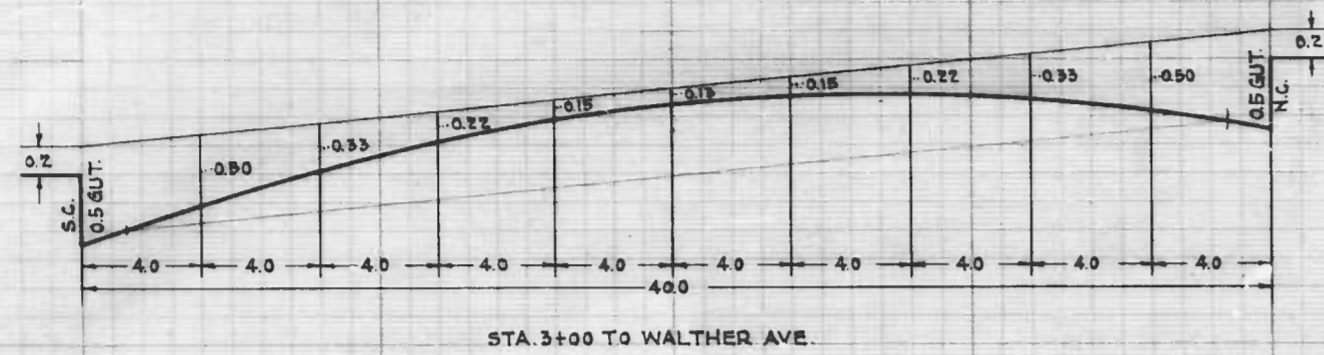
CITY OF BALTIMORE
 DEPARTMENT OF PUBLIC WORKS
 BUREAU OF HIGHWAYS
 PLAN OF
 ECHODALE AVE. - HARFORD RD TO WALTHER AVE.
 CONT. N. 840

SCALE - 1" = 40'
 APPROVED: *[Signature]* ASSOCIATE ENGINEER
 APPROVED: *[Signature]* HIGHWAYS ENGINEER
 APPROVED: *[Signature]* ENGINEER OF SURVEYS
 APPROVED: *[Signature]* DIRECTOR OF PUBLIC WORKS

DRAWN BY: J. J. HAYDEN
 EXAMINED BY: *[Signature]*
 ENGINEER IN CHARGE OF DRAWING

Shotz

→ T. END

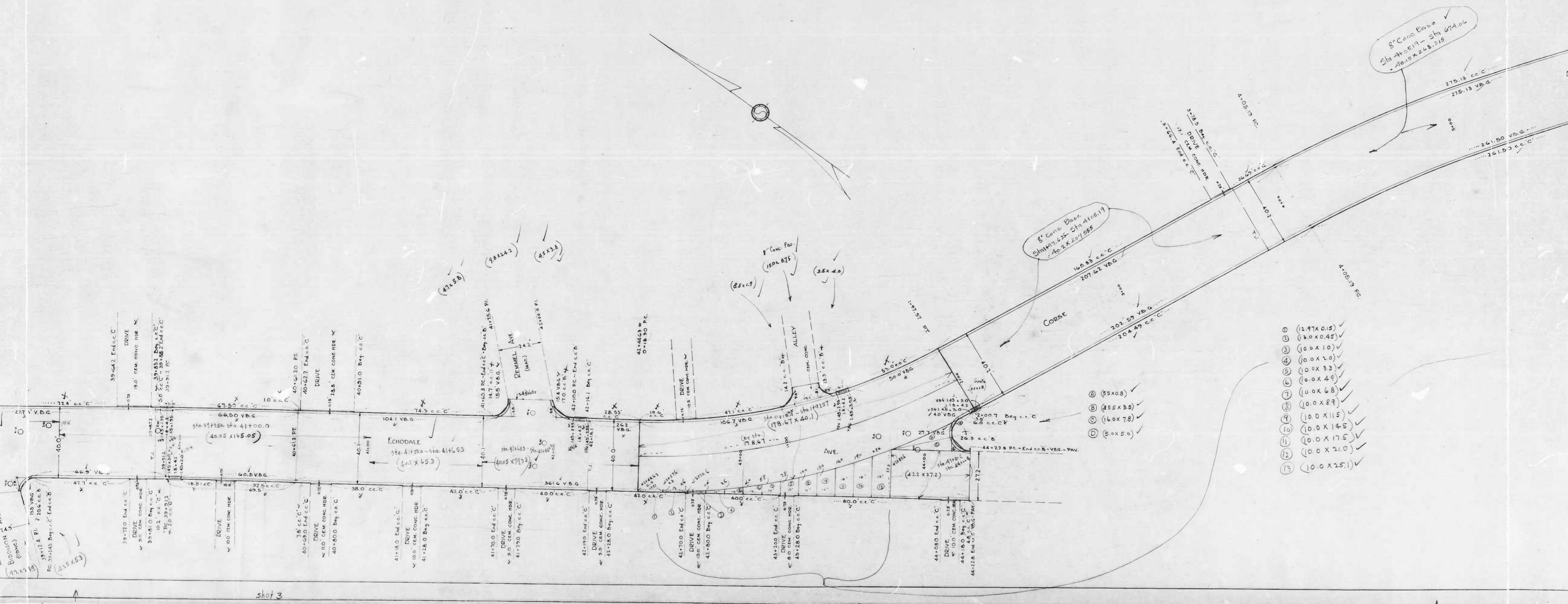


CITY OF BALTIMORE
 DEPARTMENT OF PUBLIC WORKS
 BUREAU OF HIGHWAYS
 PROFILE OF
 ECHODALE AVE. - HARFORD RD. TO WALTHER AVE.
 CONT. N^o 840
 HOR. - 1"=400' 509K N^o-X-196
 VER. - 1"=40' MAY 23, 1941

APPROVED - *Henry Hensley* ASSOCIATE ENGINEER
 APPROVED - *W. J. Zickler* HIGHWAYS ENGINEER
 APPROVED - *Edward S. Neelmeier* ENGINEER OF SURVEYS
 APPROVED - *John P. Smith* DIRECTOR OF PUBLIC WORKS

REVISED 10-3-47

STATION	ELEVATION	STATION	ELEVATION
218.89	218.89	214.22	214.22
218.74	218.74	214.22	214.22
218.65	218.65	214.22	214.22
218.56	218.56	214.22	214.22
218.21	218.21	214.22	214.22
218.09	218.09	214.22	214.22
218.02	218.02	214.22	214.22
213.45	213.45	214.22	214.22
213.20	213.20	214.22	214.22
213.70	213.70	214.22	214.22
213.30	213.30	214.22	214.22
213.60	213.60	214.22	214.22
213.65	213.65	214.22	214.22
213.30	213.30	214.22	214.22
213.60	213.60	214.22	214.22



8" Conc Base
Sta 41+51.9 - Sta 41+55.9
40' x 20' x 1' 555

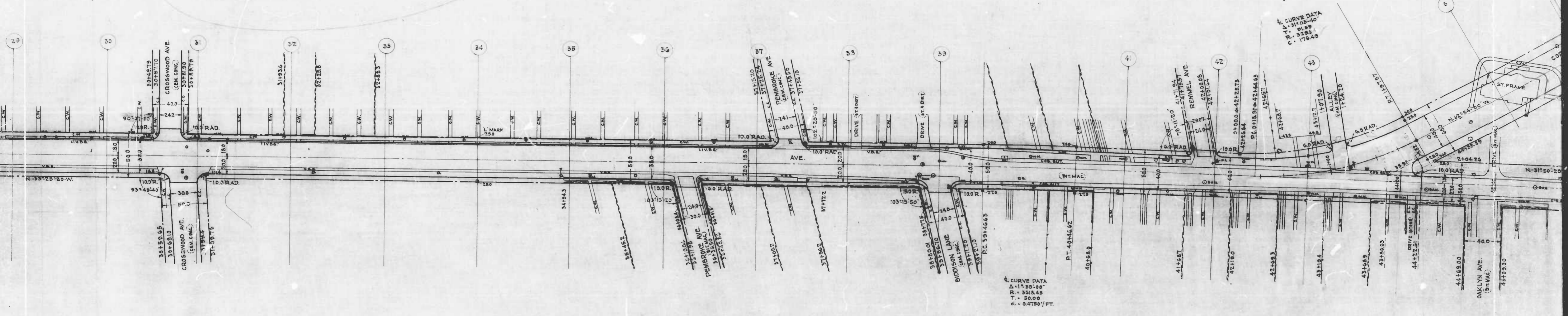
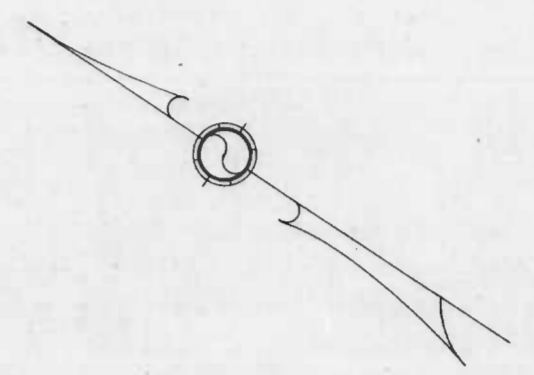
8" Conc Base
Sta 41+51.9 - Sta 41+55.9
40' x 20' x 1' 555

- Ⓚ (55x0.8) ✓
- Ⓚ (35x3.5) ✓
- Ⓚ (16x7.8) ✓
- Ⓚ (8.0x5.0) ✓

- Ⓚ (1.97x0.15) ✓
- Ⓚ (3.0x0.45) ✓
- Ⓚ (10.0x1.0) ✓
- Ⓚ (10.0x2.0) ✓
- Ⓚ (10.0x3.3) ✓
- Ⓚ (10.0x4.9) ✓
- Ⓚ (10.0x6.8) ✓
- Ⓚ (10.0x8.9) ✓
- Ⓚ (10.0x11.5) ✓
- Ⓚ (10.0x14.5) ✓
- Ⓚ (10.0x17.5) ✓
- Ⓚ (10.0x21.0) ✓
- Ⓚ (10.0x25.1) ✓

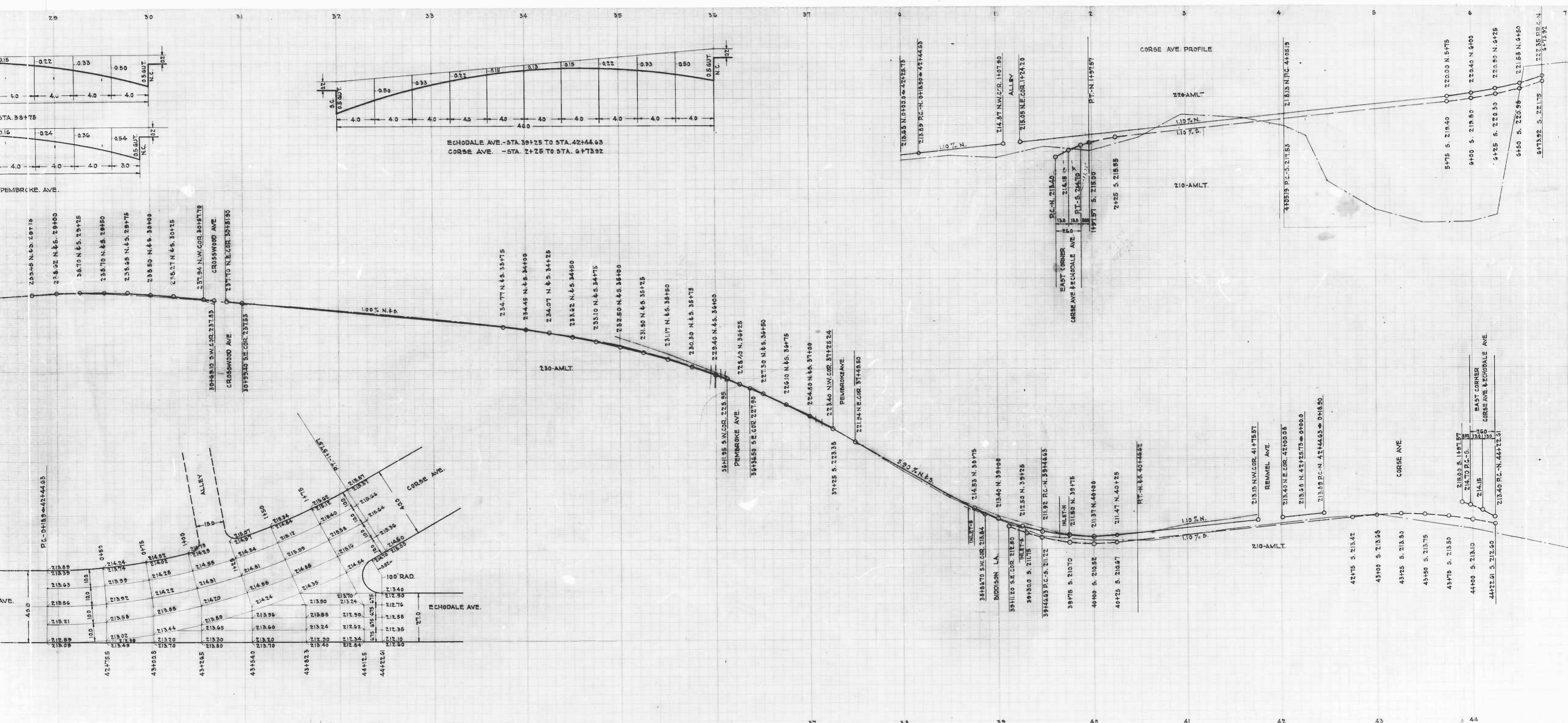
shot 3

Note:
 On North side from Walther Blvd
 to Pembroke Ave
 Hold curb-line as existing.
 Street to be 38' wide

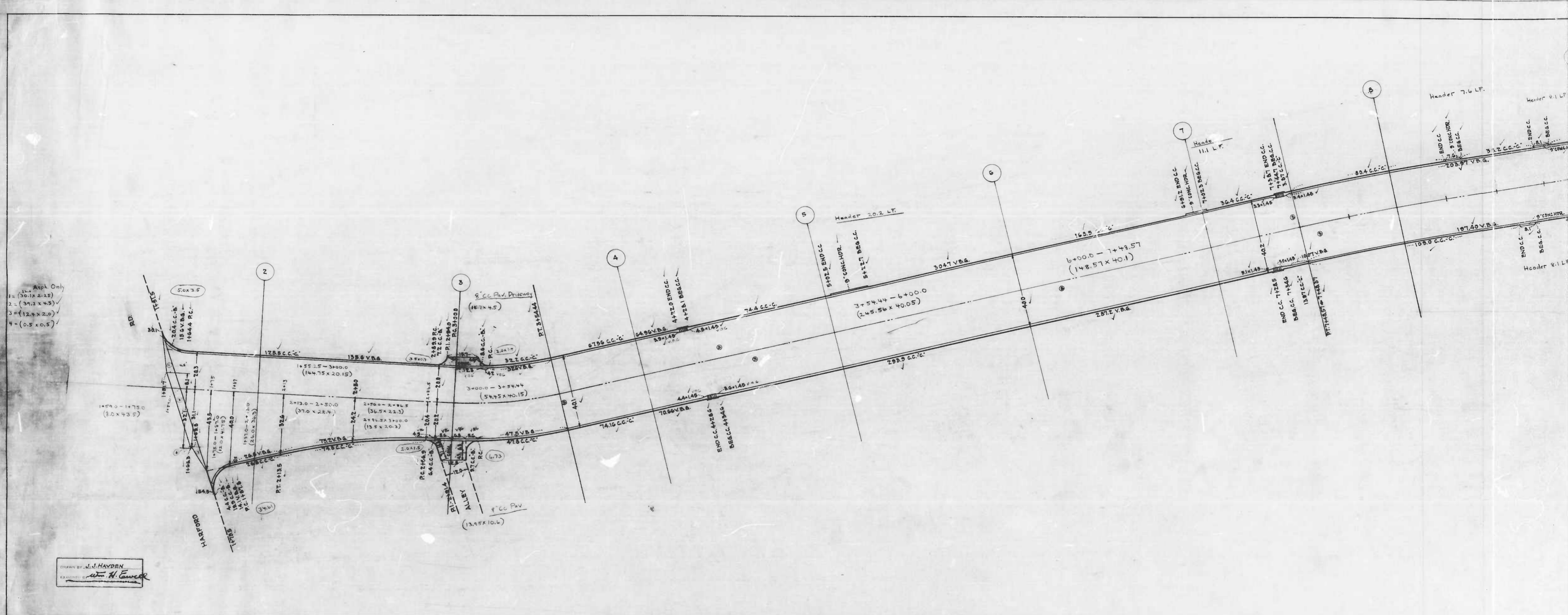


Note: Echodale Ave. - E. B. L. Walther Ave. To Corse Ave.
 To Be Shred Asphalt Paving 1 1/2" Wearing Surface 1 1/2"
 Binder on an 8" Cement Concrete Base. Soil Materials or
 Underdrains Will Not Be Required.
 Corse Ave. - Echodale Ave. To Frankford Aves.
 To Be Shred Asphalt Paving 1 1/2" Wearing Surface 1 1/2"
 Binder on an 8" Cement Concrete Base and Two Inches
 of Stone Dust Screenings Underdrains Will Not Be Required.

Sheet 3



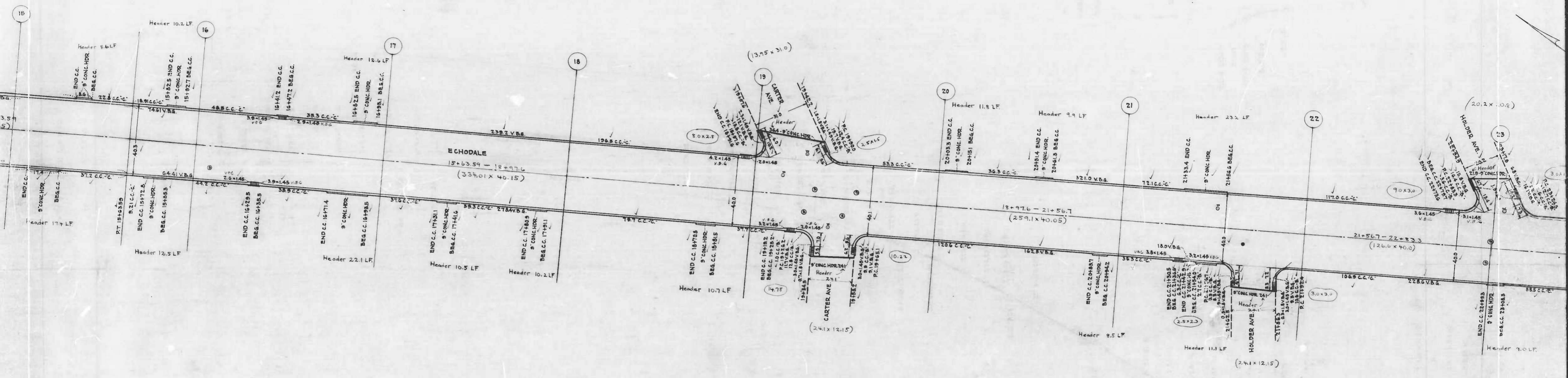
Sheet 3



- 1 = (30.1 x 2.12)
- 2 = (37.3 x 4.8)
- 3 = (12.4 x 2.0)
- 4 = (0.5 x 0.5)

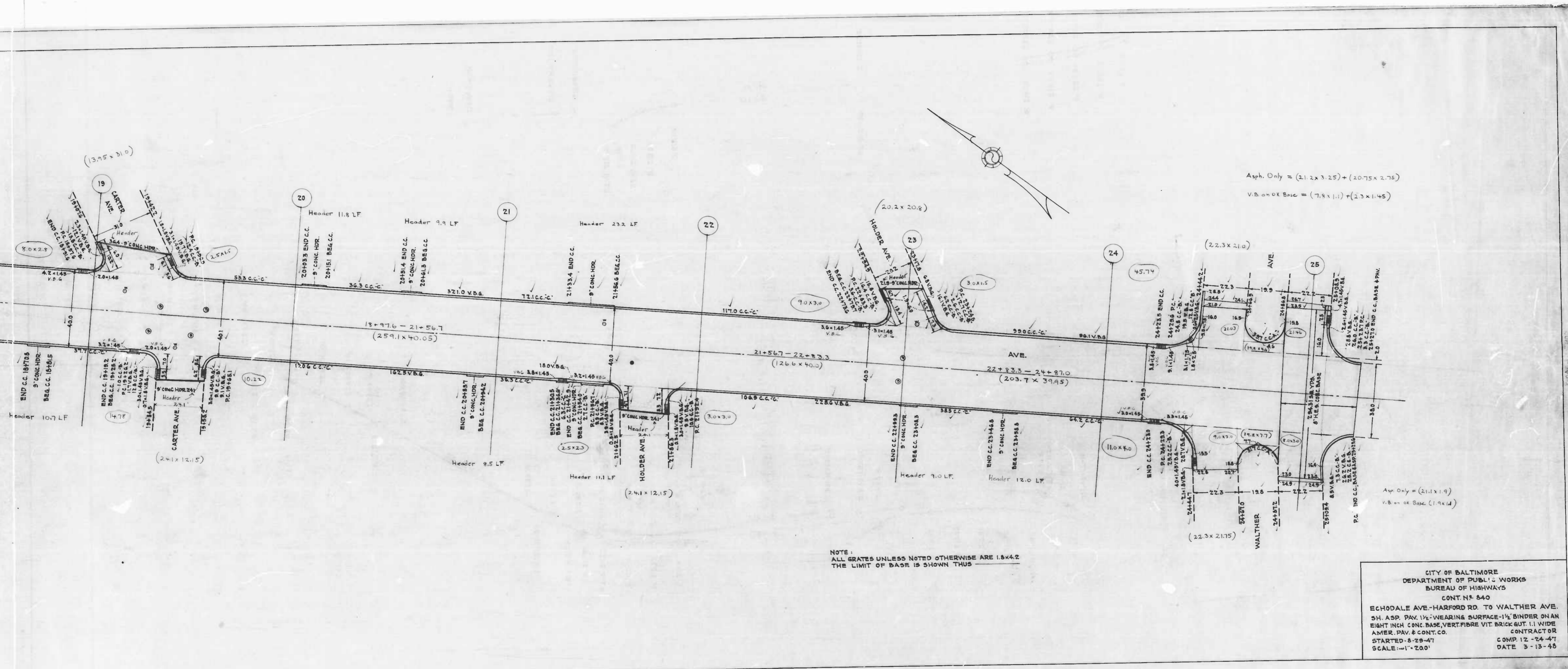
DRAWN BY J.J. HAYDEN
 EXAMINED BY W. H. COWELL

5/4/1



NOTE:
 ALL GRATES UNLESS NOTED OTHERWISE AT
 THE LIMIT OF BASE IS SHOWN THUS

shot 3



$$\text{Asph. Only} = (21.2 \times 3.25) + (20.75 \times 2.75)$$

$$\text{V.B. on OK Base} = (7.8 \times 1.1) + (2.3 \times 1.45)$$

$$\text{Asph. Only} = (21.1 \times 1.9)$$

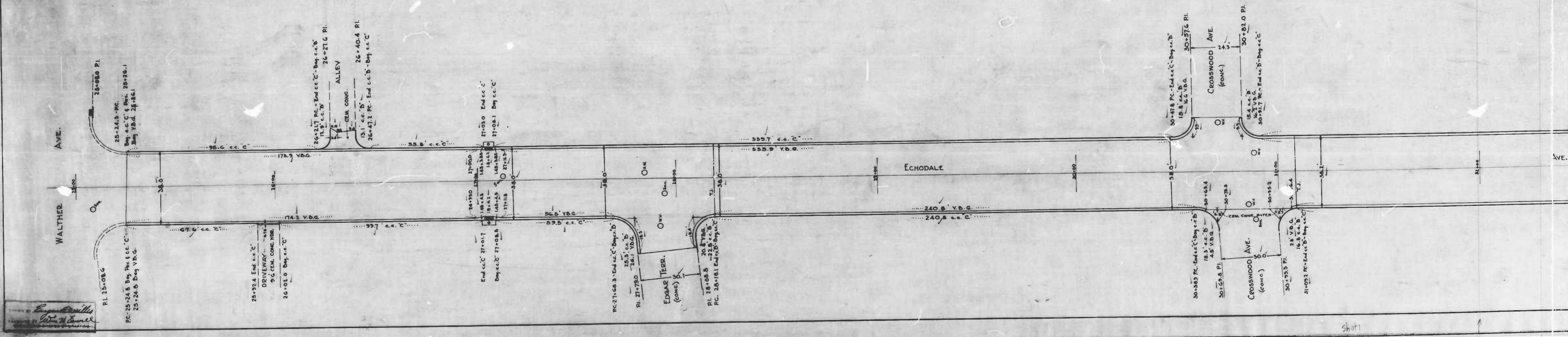
$$\text{V.B. on OK Base} = (1.9 \times 1.4)$$

NOTE:
ALL GRATES UNLESS NOTED OTHERWISE ARE 1.5x4.2
THE LIMIT OF BASE IS SHOWN THUS

CITY OF BALTIMORE
DEPARTMENT OF PUBLIC WORKS
BUREAU OF HIGHWAYS
CONT. N° 840
ECHDALE AVE.-HARFORD RD. TO WALTHER AVE.
5H. ASP. PAV. 1 1/2" WEARING SURFACE-1 1/2" BINDER ON AN
EIGHT INCH CONC. BASE, VERT. FIBRE VIT. BRICK SUT. 1 1/2" WIDE
ANER. PAV. & CONT. CO.
STARTED 8-29-47
SCALE: 1" = 200'

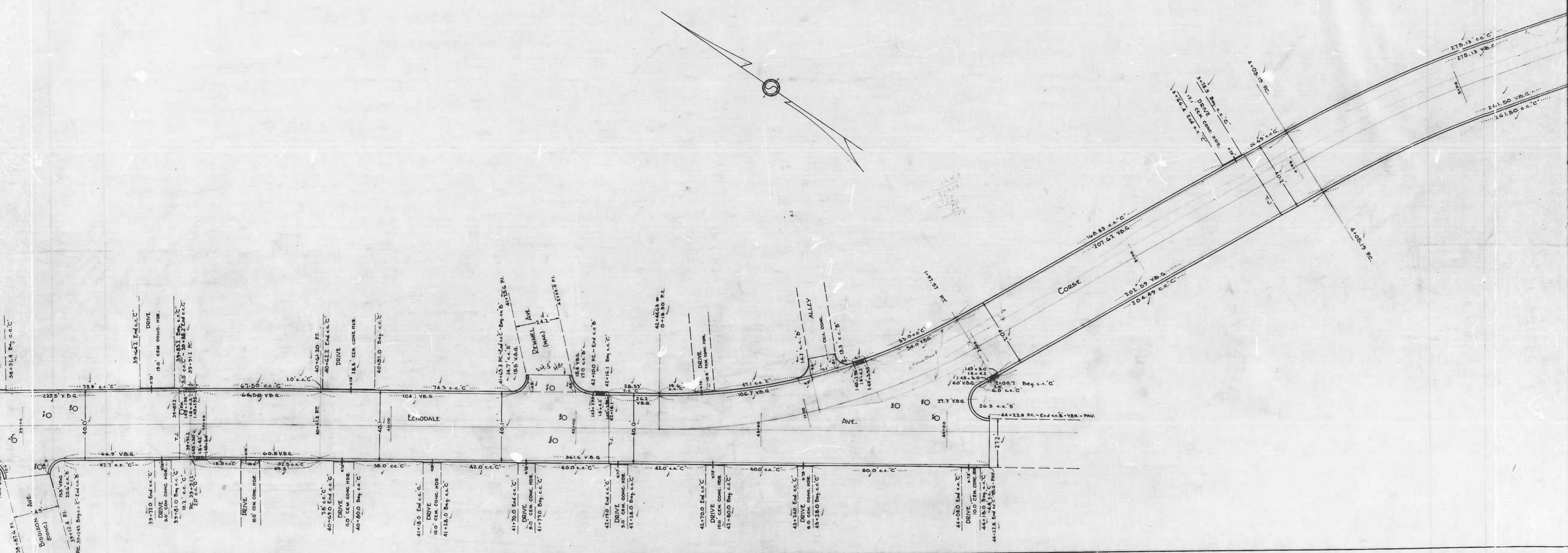
CONTRACTOR
COMP. 12-24-47
DATE 3-13-48

Sheet

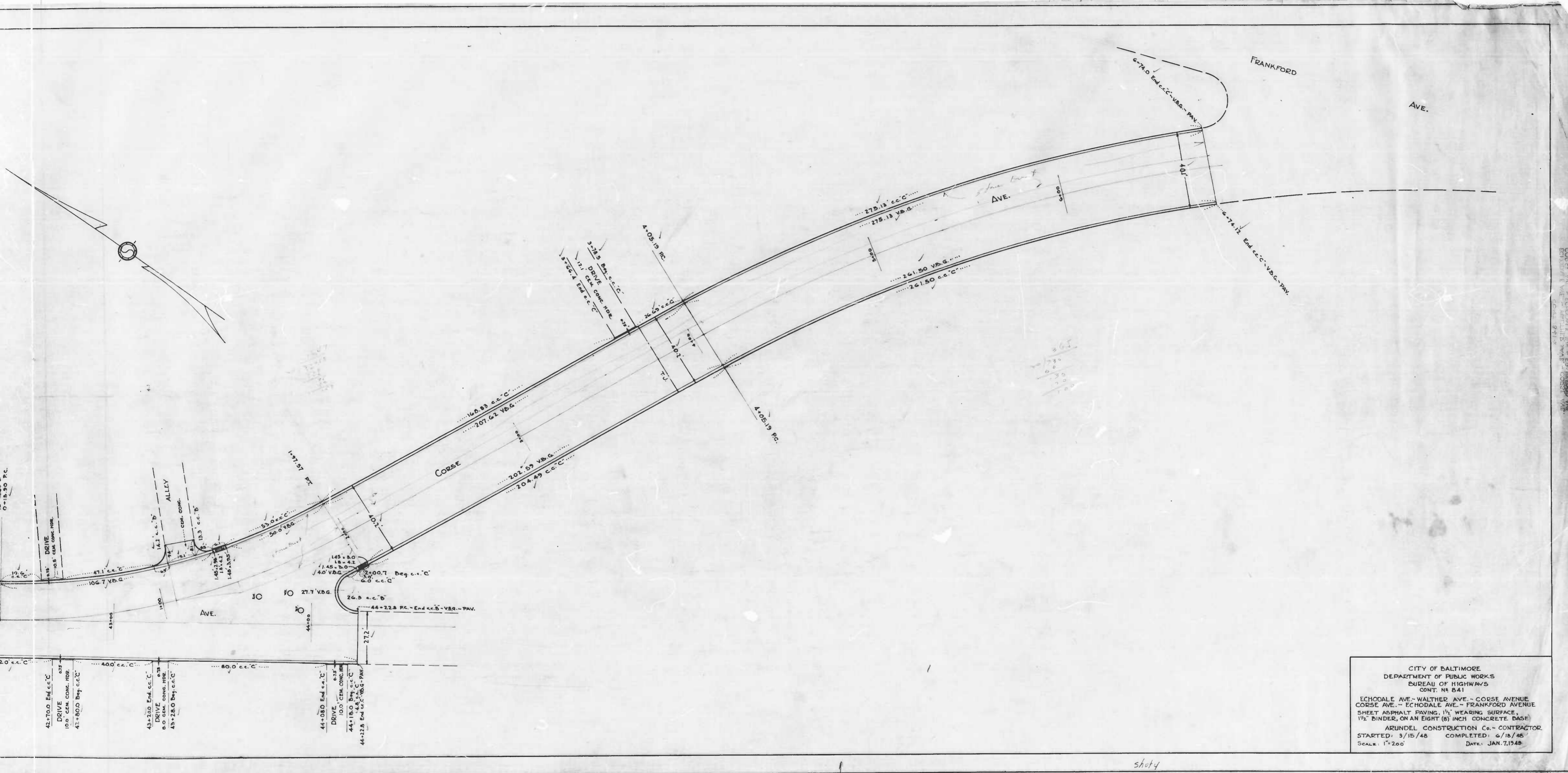


2

short



5/0/3



CITY OF BALTIMORE
 DEPARTMENT OF PUBLIC WORKS
 BUREAU OF HIGHWAYS
 CONT. NO. 841
 ECHO DALE AVE. - WALTER AVE. - CORSE AVENUE
 CORSE AVE. - ECHO DALE AVE. - FRANKFORD AVENUE
 SHEET ASPHALT PAVING, 1 1/2" WEARING SURFACE,
 1 1/2" BINDER, ON AN EIGHT (8) INCH CONCRETE BASE
 ARUNDEL CONSTRUCTION Co. - CONTRACTOR
 STARTED: 3/15/48 COMPLETED: 6/15/48
 SCALE: 1"=200' DATE: JAN. 7, 1948

shot 4