

-NOTES-
 THE ISSUANCE OF THIS PLAN DOES NOT COMMIT THE CITY TO THE ACCEPTANCE AND/OR IMPROVEMENT OF ANY THOROUGHFARE SHOWN HEREON.
 TO BE CEMENT CONCRETE PAVING (7") SEVEN INCHES THICK.
 SOIL STABILIZATION MATERIAL AND/OR UNDERDRAIN ARE NOT REQUIRED.

SOL CURVE DATA
 R = 42.70
 T = 14.10
 L = 27.24
 1/2 A = 16° 16' 25"

CITY OF BALTIMORE
 DEPARTMENT OF PUBLIC WORKS
 BUREAU OF HIGHWAYS
 PLAN OF -
 BRENDAN AVE. - FINDLAY ROAD - BREHM'S LA.
 CONT 839
 SCALE: 1"=20.0' BOOK X-231 JUNE 12, 1947

APPROVED: *Henry Weiskopf*
 ASSOCIATE ENGINEER

APPROVED: *W. T. Fisher*
 HIGHWAYS ENGINEER

APPROVED: *Edward J. Halpin*
 ENGR. OF SURVEYS

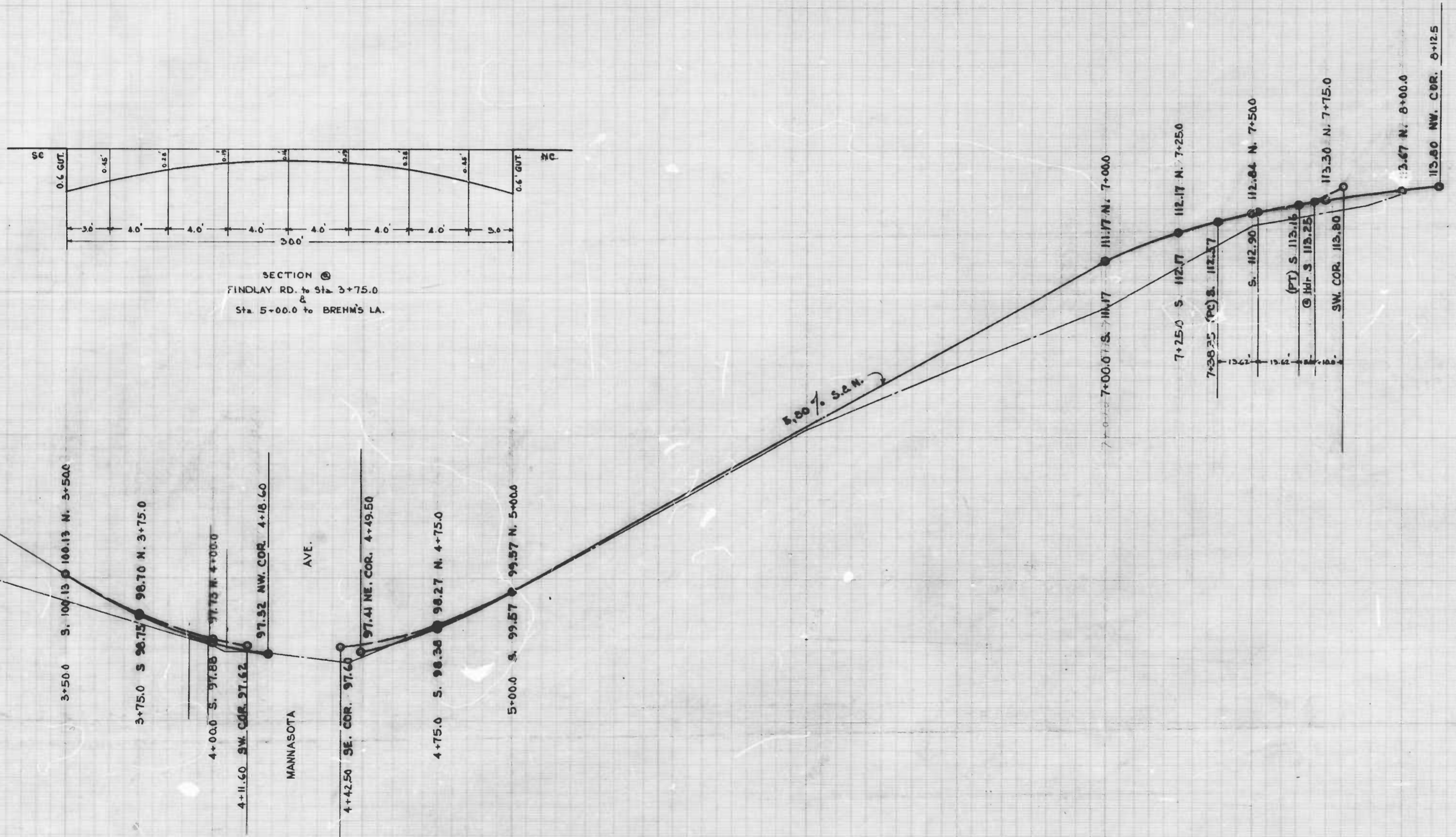
APPROVED: *Arthur P. Smith*
 DIRECTOR OF PUBLIC WORKS

1 shot

2 shots

BRENDAN AVE. - FINDLAY ROAD - BREHM'S LA.
 CONT 839

32-119



SECTION @
 FINDLAY RD. to Sta 3+75.0
 Sta. 5+00.0 to BREHM'S LA.

NOTE: THE ISSUANCE OF THIS PROFILE DOES NOT COMMIT THE CITY TO THE ACCEPTANCE AND/OR IMPROVEMENT OF ANY THOROUGHFARE SHOWN HEREON.

CITY OF BALTIMORE
 DEPARTMENT OF PUBLIC WORKS
 BUREAU OF HIGHWAYS
 PROFILE OF
 BRENDAN AVE. FINDLAY RD. BREHM'S LANE
 CONT 839

VER. - 1" = 2.0'
 HOR. - 1" = 20.0'

BOOK X-231
 JUNE 15, 1947

APPROVED:
Henry Wisberg
 ASSOCIATE ENGINEER

APPROVED:
W. J. F. Fisher
 HIGHWAYS ENGINEER

APPROVED:
Edward H. McLean
 ENGINEER OF SURVEYS

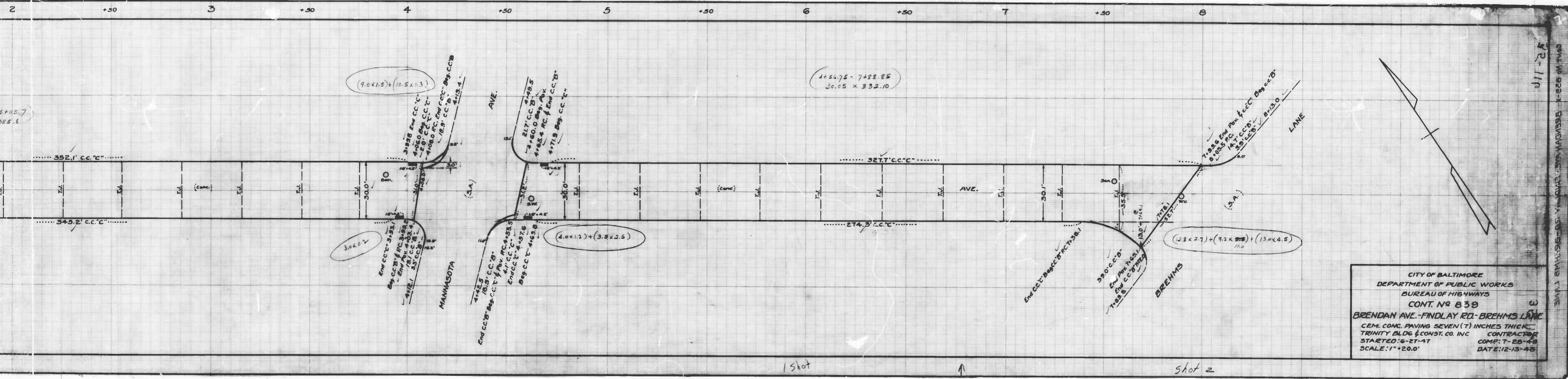
APPROVED:
Frank R. Smith
 DIRECTOR OF PUBLIC WORKS

1 shot

2 shots

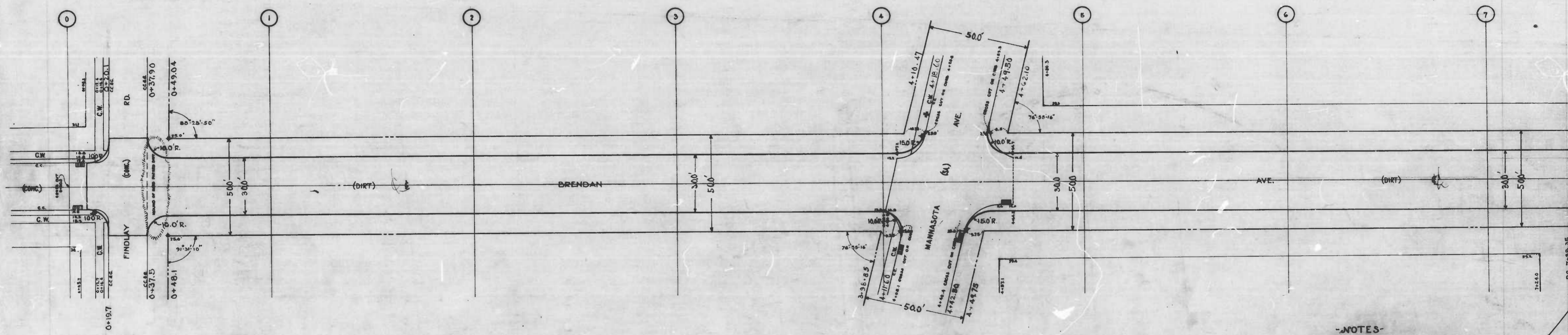
REPRODUCTION OF THIS DRAWING IS PROHIBITED WITHOUT THE WRITTEN CONSENT OF THE ENGINEER

32-119



CITY OF BALTIMORE
 DEPARTMENT OF PUBLIC WORKS
 BUREAU OF HIGHWAYS
 CONT. NO. 839
BRENDAN AVE.-FINDLAY RD.-BREHMS LANE
 CEM. CONC. PAVING SEVEN (7) INCHES THICK
 TRINITY BLDG & CONST. CO. INC. CONTRACTOR
 STARTED: 6-27-47 COMP: 7-25-48
 SCALE: 1"=20.0' DATE: 12-13-48

22-111
 01111 525-4 BRENDAN AVE-FINDLAY RD-BREHMS LANE



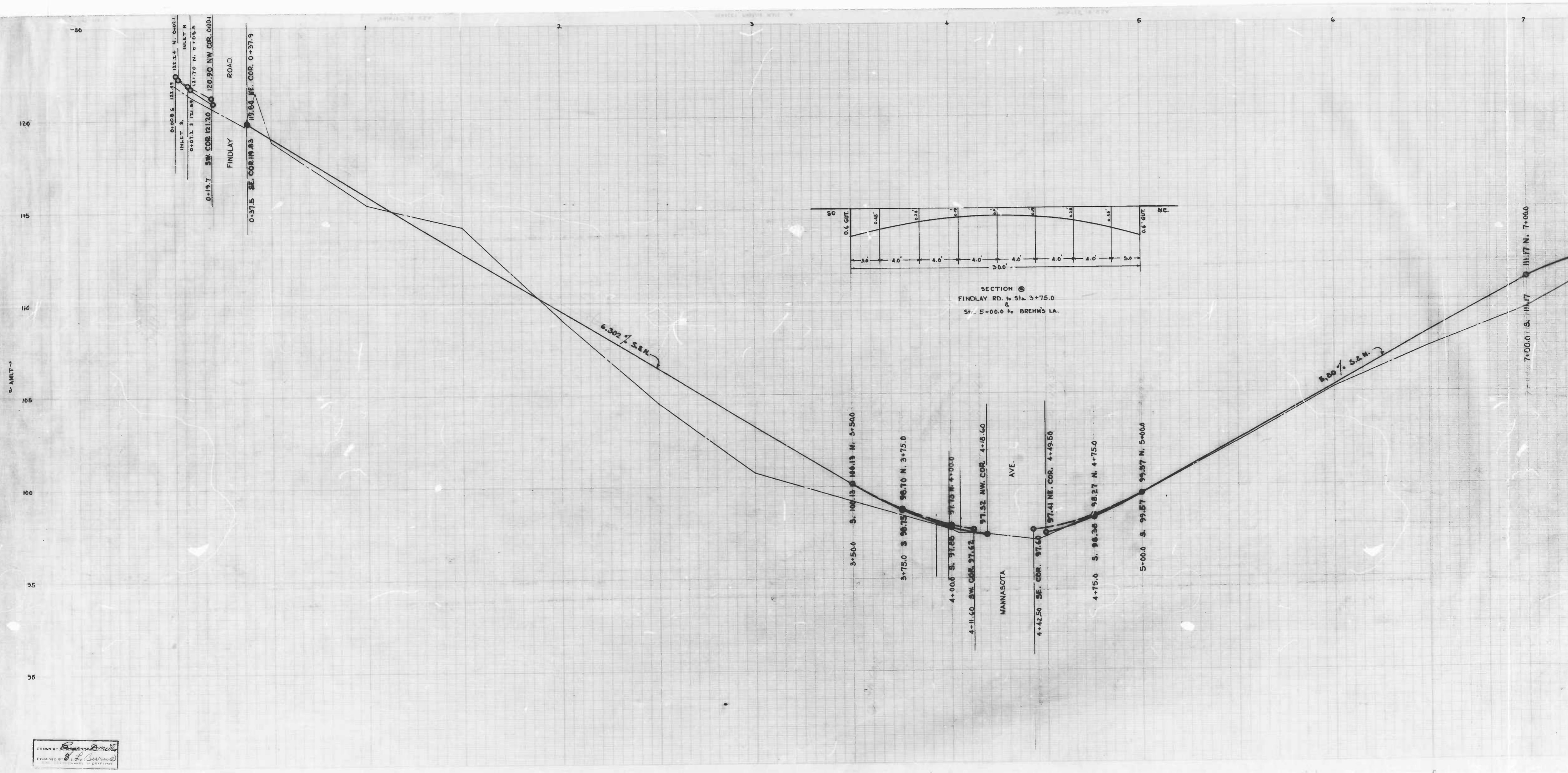
-NOTES-

- THE ISSUANCE OF THIS PLAN DOES NOT COMMIT THE CITY TO THE ACCEPTANCE AND/OR IMPROVEMENT OF ANY THROUGHFARE SHOWN HEREON.
- TO BE CEMENT CONCRETE PAVING (7") SEVEN INCHES THICK.
- SOIL STABILIZATION MATERIAL AND/OR UNDERDRAIN ARE NOT REQUIRED.

SOIL CURVE DATA
 R= 42.70
 T= 14.10
 L= 27.24
 P= 15.76/25

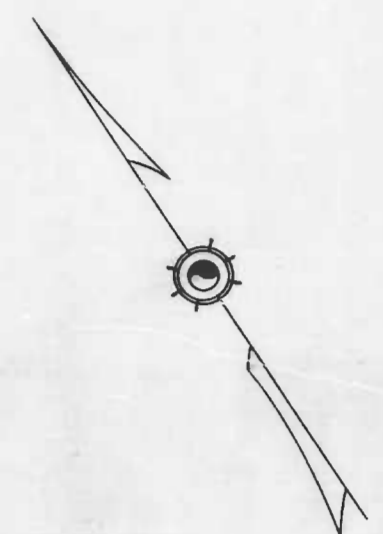
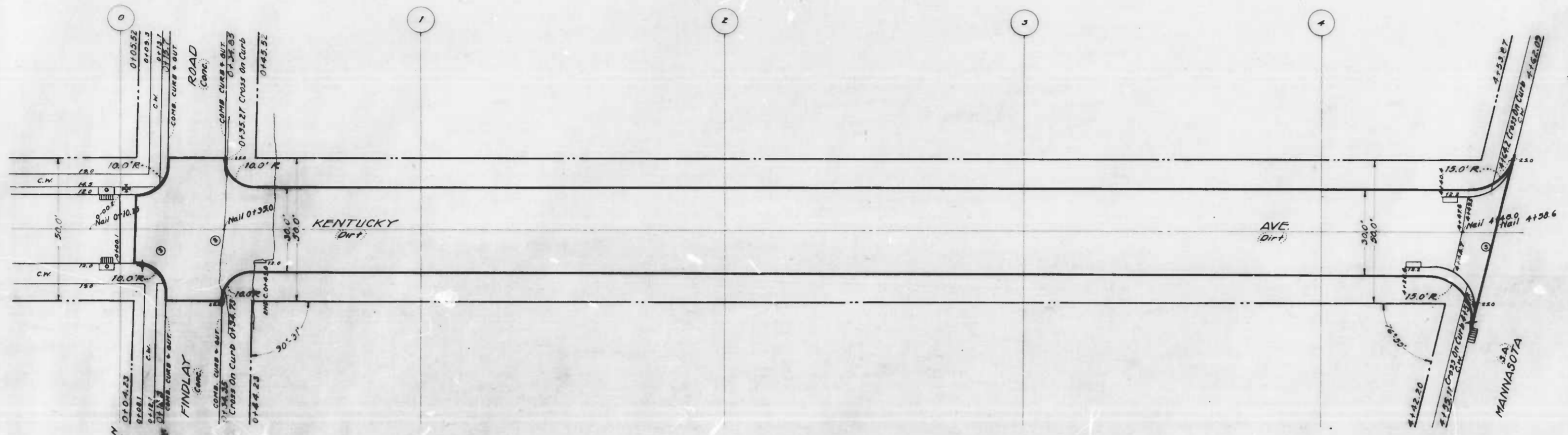
DRAWN BY *Engelhardt*
 CHECKED BY *W. J. ...*
 IN CHARGE OF DRAFTING

1shot



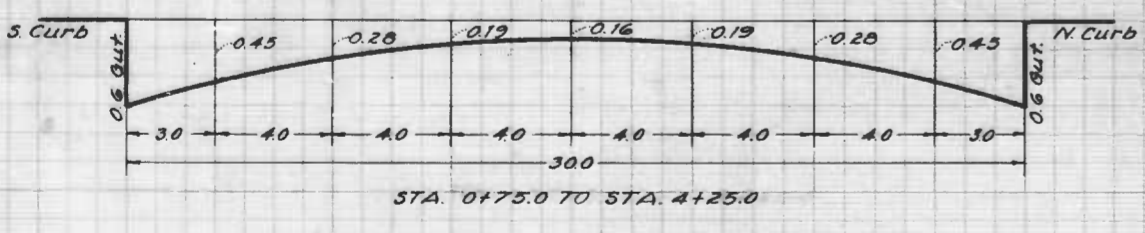
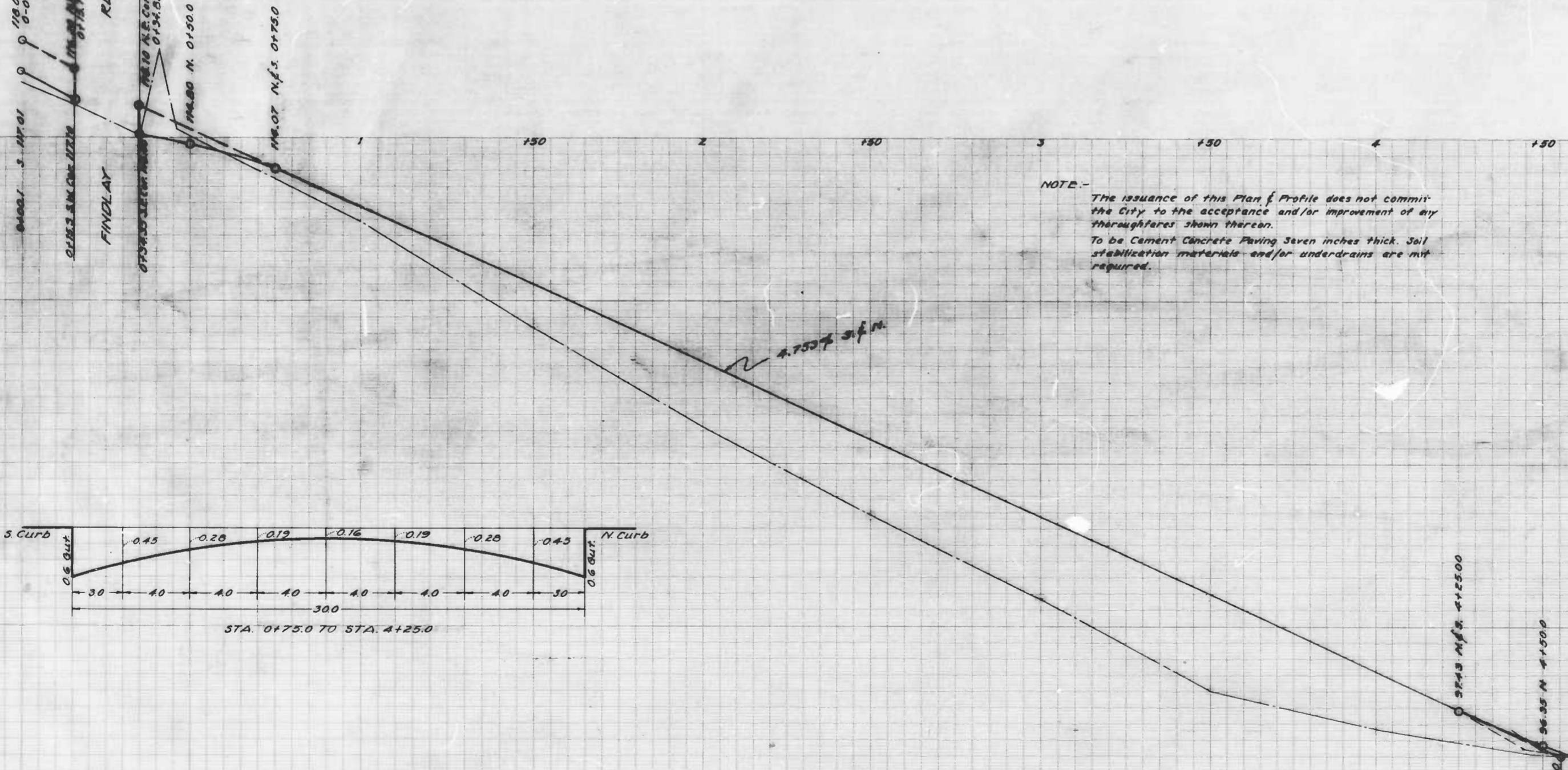
DRAWN BY *[Signature]*
 CHECKED BY *[Signature]*
 ENGINEER *[Signature]*

15101



KENTUCKY AVE - FINDLAY RD TO MANNASOTA AVE
 CONT. No. 839

NOTE -
 The issuance of this Plan & Profile does not commit
 the City to the acceptance and/or improvement of any
 thoroughfares shown thereon.
 To be Cement Concrete Paving seven inches thick. Soil
 stabilization materials and/or underdrains are not
 required.

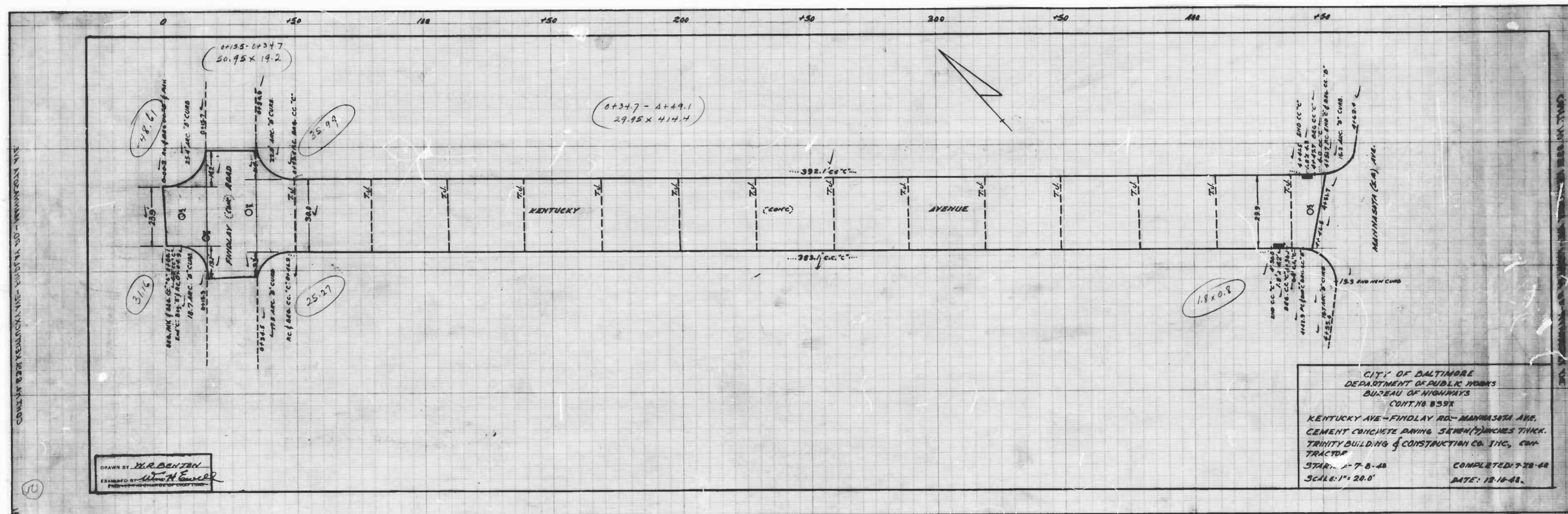


CITY OF BALTIMORE
 DEPARTMENT OF PUBLIC WORKS
 BUREAU OF HIGHWAYS
PLAN & PROFILE
 KENTUCKY AVE - FINDLAY RD TO MANNASOTA AVE
 CONT. No. 839

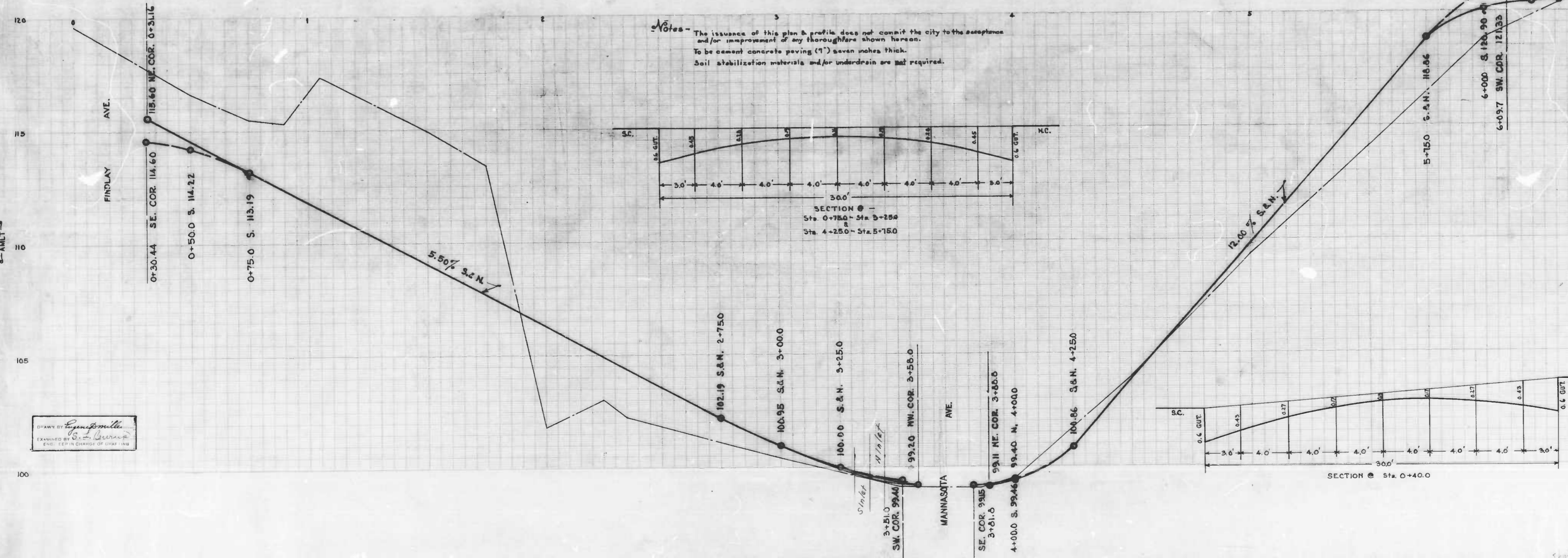
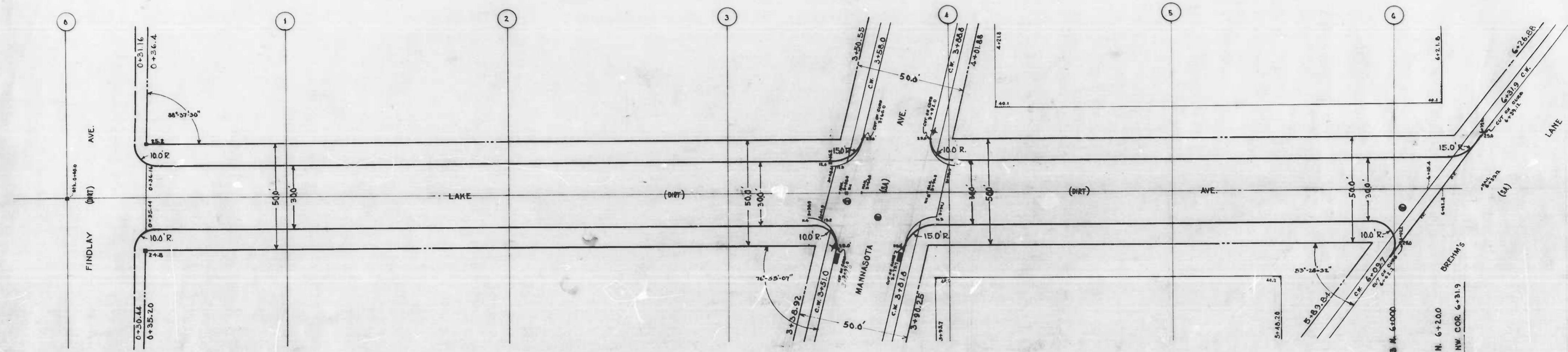
PLAN: 1" = 20.0' BOOK No. - C-839
 PROFILE: 1" = 20.0' DATE: JUNE 6, 47

APPROVED APPROVED
Henry Weathers *W. H. F. Zander*
 ASSOCIATE ENGINEER HIGHWAYS ENGINEER
 APPROVED APPROVED
Edward P. Haddock *Walter R. Smith*
 ENGINEER OF SURVEYS DIRECTOR OF PUBLIC WORKS

DRAWN BY: U. L. Fawcett
 EXAMINED BY: S. L. Burns
 (IND. EER IN CHARGE OF DRAWING)



2283

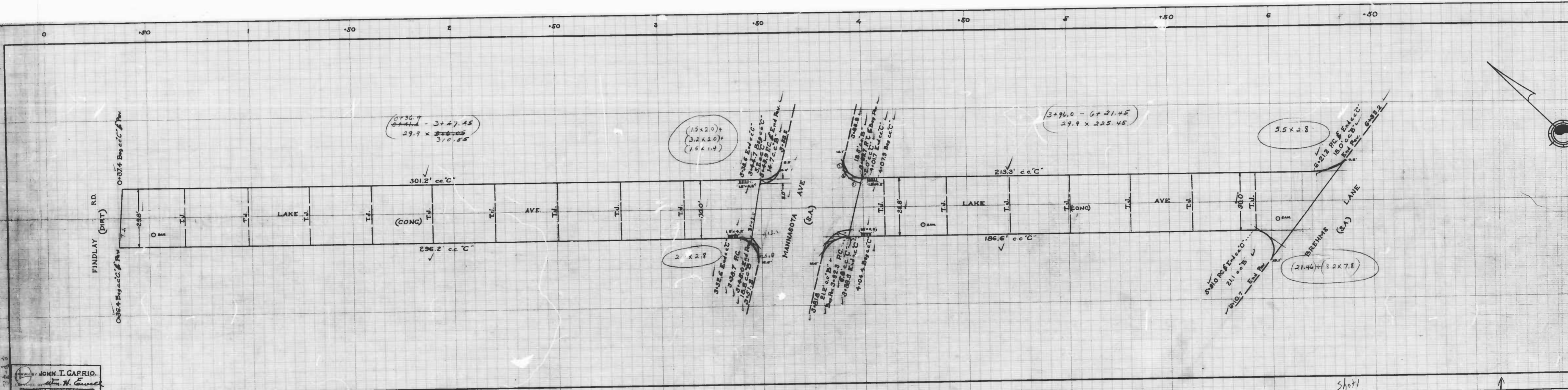


Notes -
 The issuance of this plan & profile does not commit the city to the acceptance and/or improvement of any thoroughfare shown hereon.
 To be cement concrete paving (1") seven inches thick.
 Soil stabilization materials and/or underdrain are not required.

CITY OF BALTIMORE
 DEPARTMENT OF PUBLIC WORKS
 BUREAU OF HIGHWAYS
 PLAN & PROFILE OF
 LAKE AVE. - FINDLAY RD - BREHM'S LANE
 CONT 839
 SCALES - VER 1"=2.0'
 HOR. 1"=20.0'
 APPROVED: Henry Weisberg, ASSOCIATE ENGINEER
 APPROVED: [Signature], HIGHWAYS ENGINEER
 APPROVED: [Signature], ENGINEER OF SURVEYS
 APPROVED: [Signature], DIRECTOR OF PUBLIC WORKS

DRAWN BY [Signature]
 CHECKED BY [Signature]
 ENGR. FOR THE CITY OF BALTIMORE

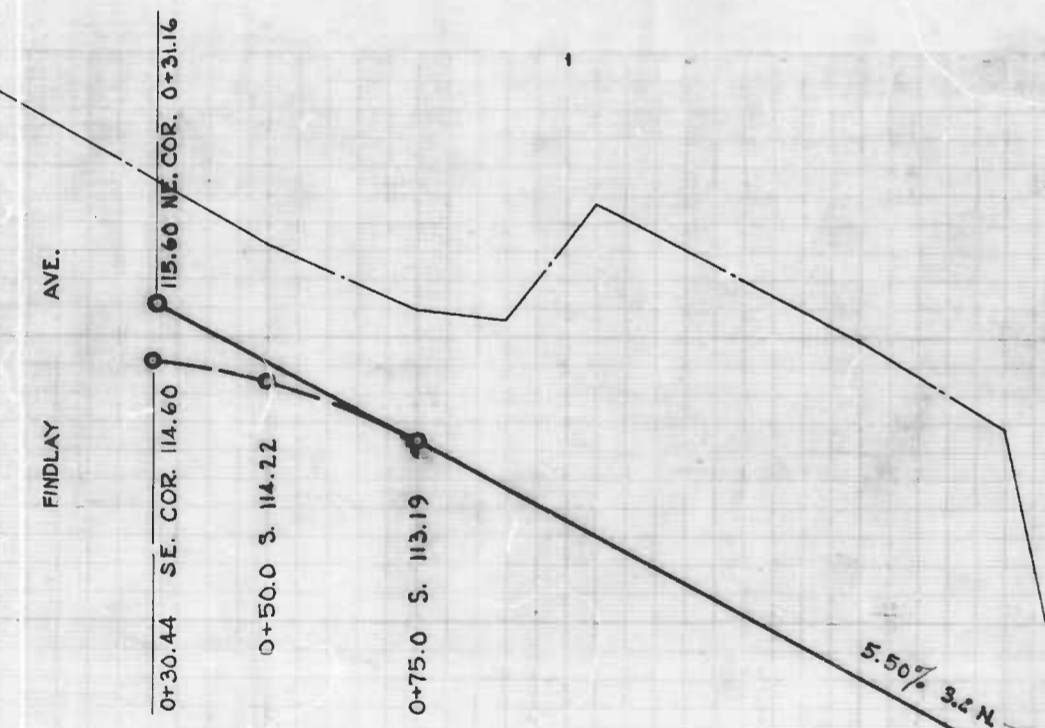
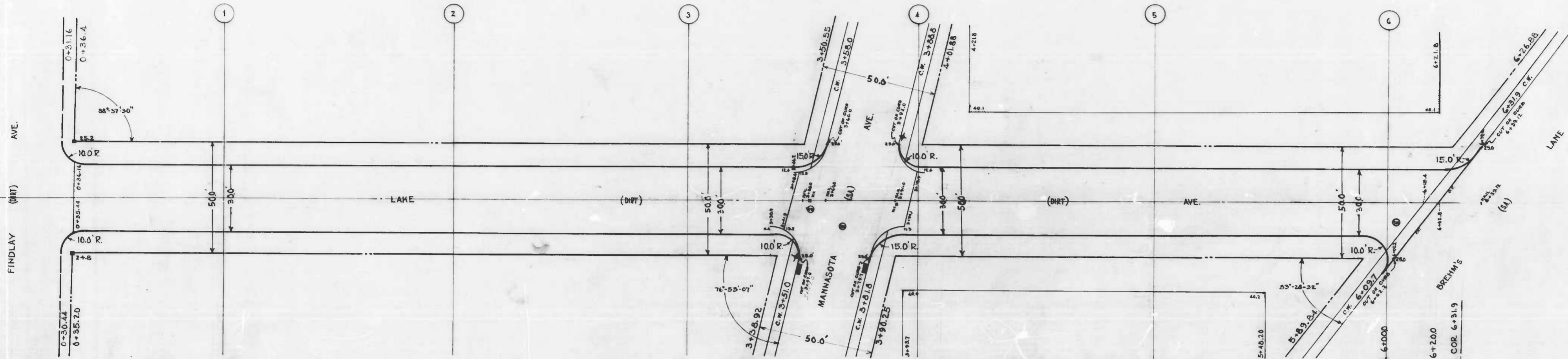
31-13
TOWN MAP - LINDEN - SEENING FARE
COMPILED BY
31-13



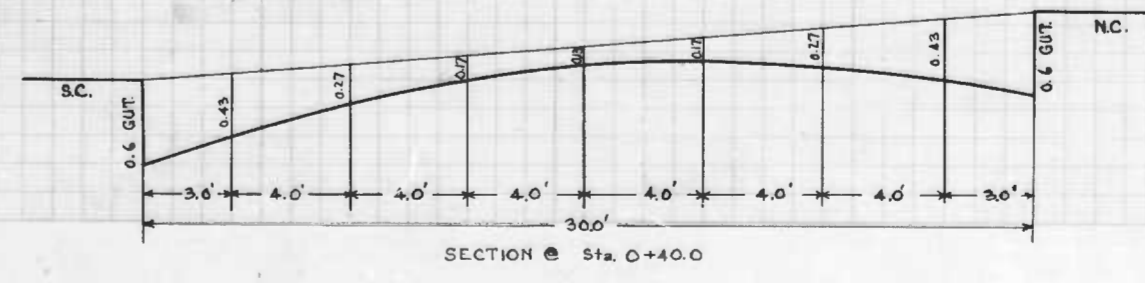
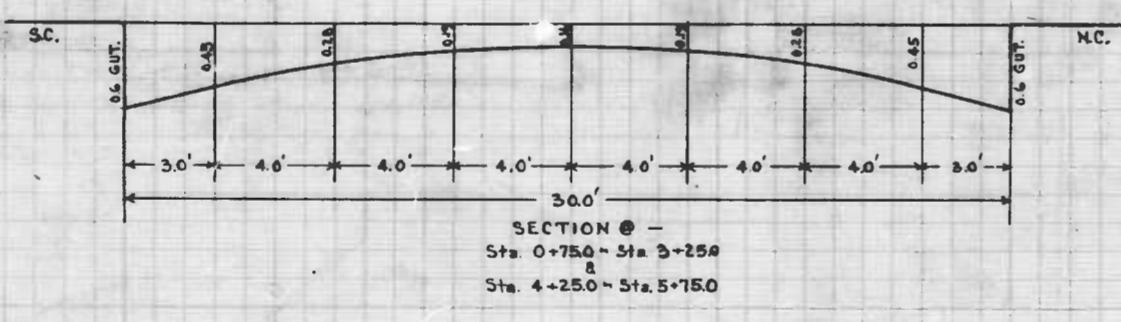
JOHN I. CAPRIO
CIVIL ENGINEER

CITY
DEPARTMENT
BUREAU
LAKE AVE - F
CEMENT CONC
TRINITY BLDG
STARTED - 7-8-
Scale - 1"=20.0'

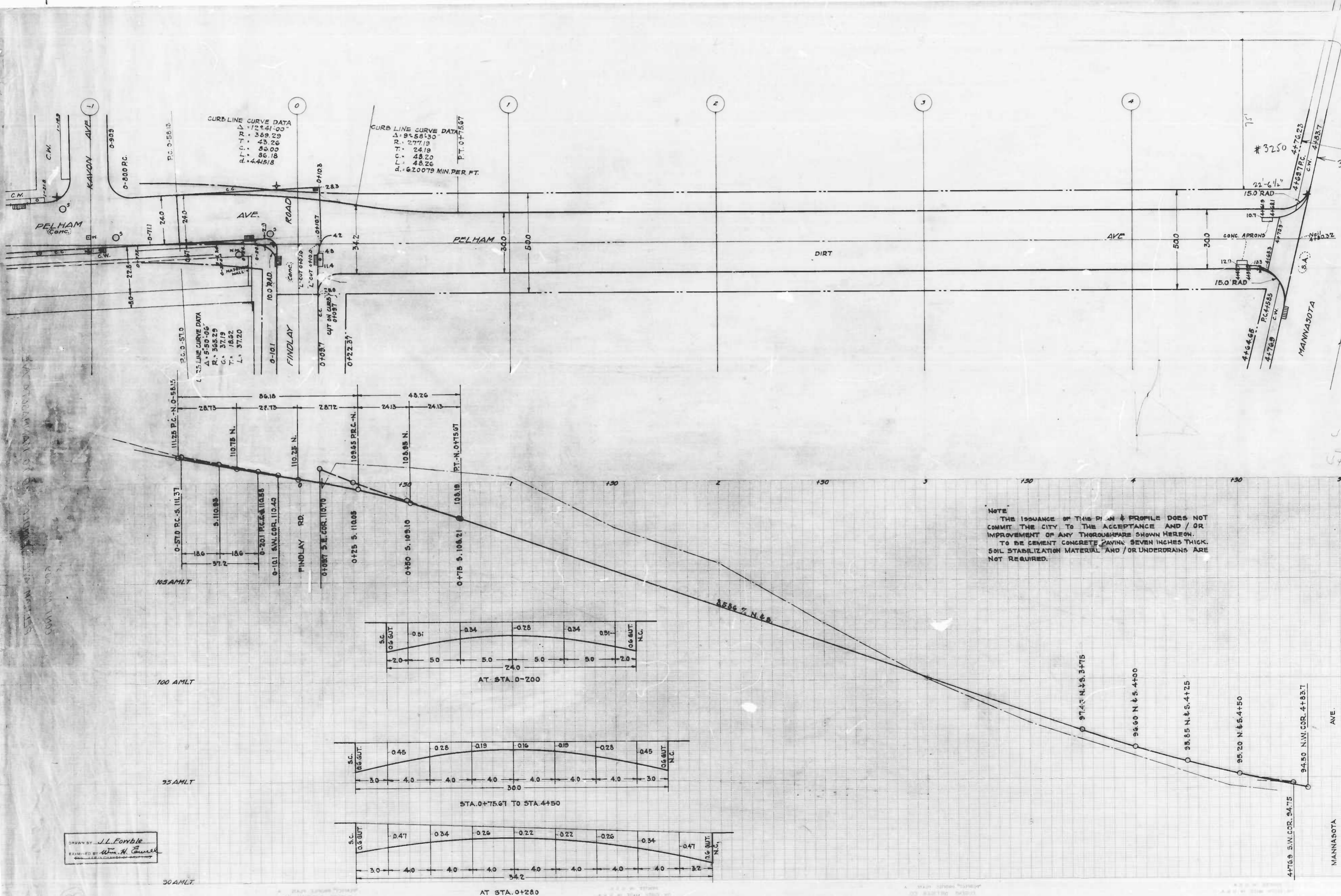
Shot



Note - The issuance of this plan & profile does not commit the city to the acceptance and/or improvement of any thoroughfare shown hereon. To be cement concrete paving (1") seven inches thick. Soil stabilization materials and/or underdrain are not required.



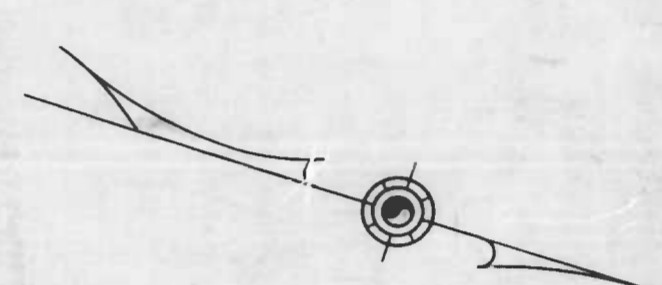
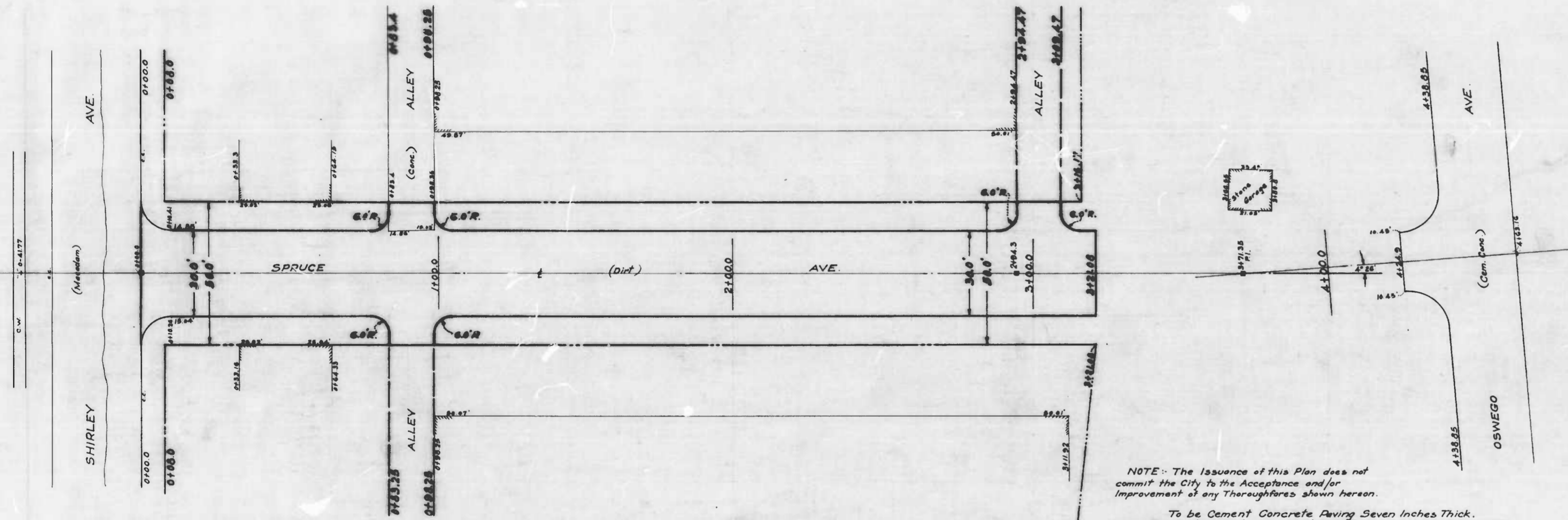
CITY OF BALTIMORE
DEPARTMENT OF PUBLIC WORKS
BUREAU OF HIGHWAYS
PLAN & PROFILE OF
LAKE AVE. - FINDLAY RD. - BREHM'S LANE
CONT 839
SCALES: VER. 1"=20'
HOR. 1"=200'
APPROVED: *Henry Weisberg* ASSOCIATE ENGINEER
APPROVED: *W. J. Fisher* HIGHWAYS ENGINEER
APPROVED: *Edward M. ...* ENGINEER OF SURVEYS
APPROVED: *Frank ...* DIRECTOR OF PUBLIC WORKS
JUNE 6, 1947



NOTE
 THE ISSUANCE OF THIS PLAN & PROFILE DOES NOT
 COMMIT THE CITY TO THE ACCEPTANCE AND / OR
 IMPROVEMENT OF ANY THRESHOLDS SHOWN HEREON.
 TO BE CEMENT CONCRETE PAVING SEVEN INCHES THICK.
 SOIL STABILIZATION MATERIAL AND / OR UNDERDRAINS ARE
 NOT REQUIRED.

CITY OF BALTIMORE
 DEPARTMENT OF PUBLIC WORKS
 BUREAU OF HIGHWAYS
 PLAN & PROFILE
 PELHAM AVE. - FINDLAY RD. TO MANNASOTA AVE.
 CONT. NO. 839
 PLAN: 1" = 200' BOOK NO. - C-839
 SCALE: HORIZ. 1" = 200' DATE: SEPT. 11, 1947
 PROFILE: 1" = 20' VER. 1" = 20'
 APPROVED
 Henry Weisberg
 ASSOCIATE ENGINEER
 APPROVED
 Edward J. ...
 ENGINEER OF SURVEYS
 APPROVED
 ...
 DIRECTOR OF PUBLIC WORKS

DRAWN BY J.L. Fowble
 EXAMINED BY Wm. H. Gwinn



CITY OF BALTIMORE
 DEPARTMENT OF PUBLIC WORKS
 BUREAU OF HIGHWAYS
 PLAN OF
 SPRUCE AVE. - SHIRLEY AVE. - 530'± NORTH
 Scale: 1" = 20.0'
 CONT. NO. 839

APPROVED
Henry Weinberg
 ASSOCIATE ENGINEER

APPROVED
W. J. F. Funder
 HIGHWAYS ENGINEER

APPROVED
Edward J. Healey
 ENGR. PLANS & SURVEYS

APPROVED
John R. Smith
 CHIEF ENGINEER

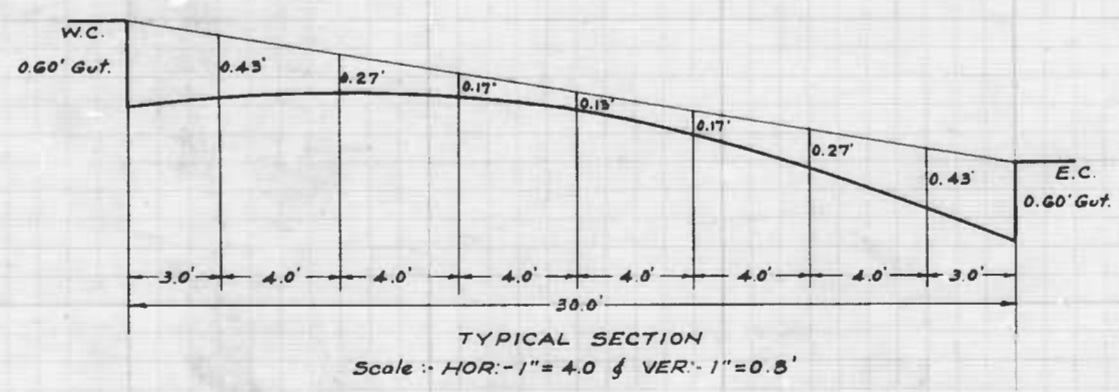
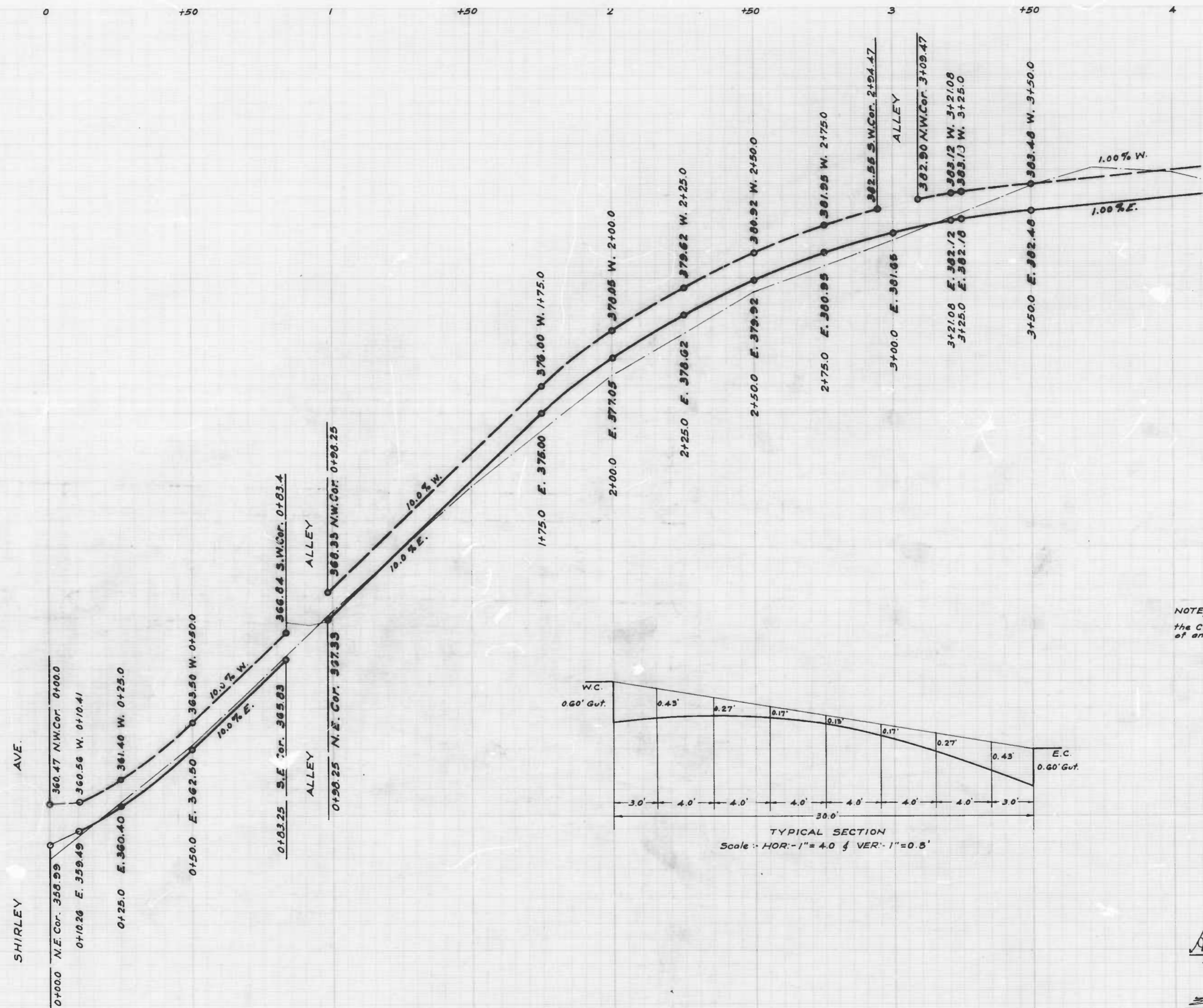
NOTE: The issuance of this Plan does not
 commit the City to the Acceptance and/or
 Improvement of any Thoroughfares shown hereon.
 To be Cement Concrete, Having Seven Inches Thick.
 Soil Stabilization Materials and/or Underdrains are not required.

BY: *H. B. Conell*
 CHIEF ENGINEER

SPRUCE AVE. - SHIRLEY AVE. - 530'± NORTH
 CONT. NO. 839

30-20

365 AMLT
360 AMLT
375 AMLT
370 AMLT
365 AMLT
360 AMLT
355 AMLT



NOTE:
The issuance of this Profile does not commit the City to the Acceptance and/or Improvement of any Thoroughfares shown hereon.

CITY OF BALTIMORE
DEPARTMENT OF PUBLIC WORKS
BUREAU OF HIGHWAYS
PROFILE OF
SPRUCE AVE. - SHIRLEY AVE. - 330' NORTH
Scale: HOR: 1" = 20.0' BOOK NO X-182A.
VER: 1" = 2.0' DATE: APRIL 23, 1947.
CONT. NO 839

APPROVED
Henry Weisberg
ASSOCIATE ENGINEER
APPROVED

APPROVED
W. J. Fisher
HIGHWAYS ENGINEER
APPROVED

Edward J. Washburn
ENGR. PLANS & SURVEYS

Orlando R. Smith
CHIEF ENGINEER

DRAWN BY *John H. Bell*
EXAMINED BY *W. J. Fisher*
ENGINEER IN CHARGE OF DRAFTING

SPRUCE AVE. - SHIRLEY AVE. - 330' NORTH
PROFILE
CONT. NO 839

