

STA 11+25 TO STA. 12+34.57

CITY OF BALTIMORE
 DEPARTMENT OF PUBLIC WORKS
 BUREAU OF HIGHWAYS
 PROFILE OF
 COLD SPRING LA. - BEAUREGARD AVE. TO NORTHWOOD DR.
 CONT. NO. 832

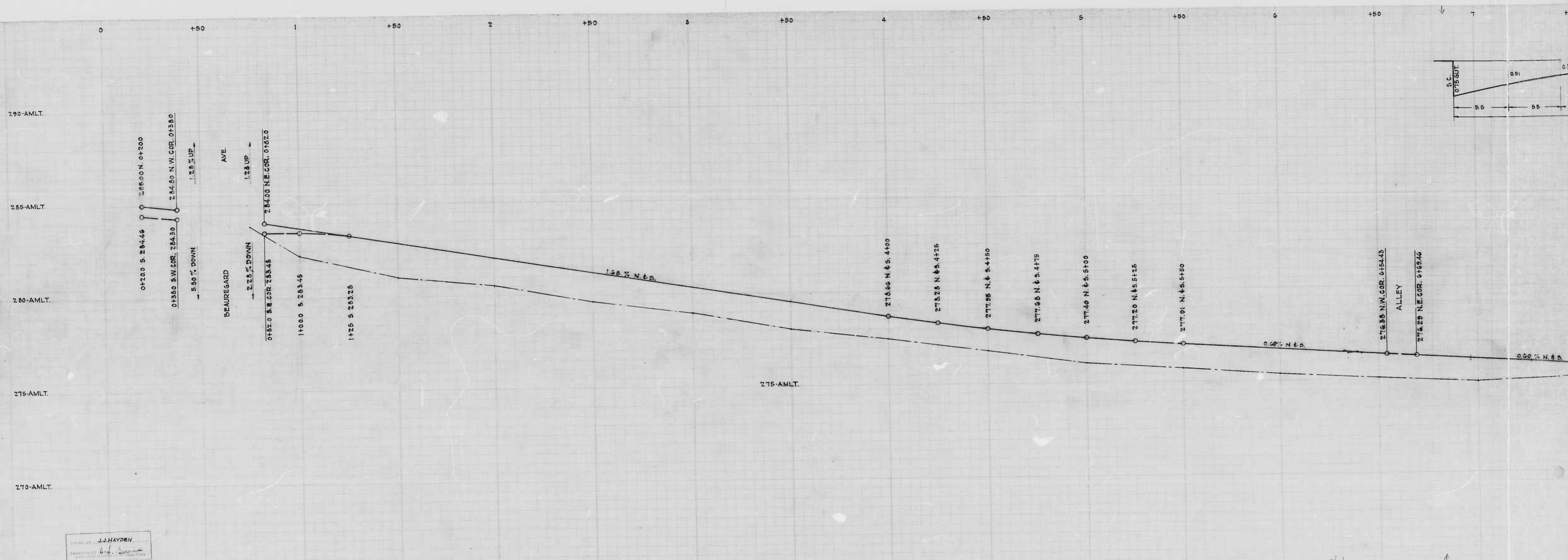
SCALE - 1" = 200'
 APPROVED - *Henry Wisberg*
 ASSOCIATE ENGINEER

BOOK N-X-184
 DATE 3-26-47
 APPROVED - *W. J. Fisher*
 HIGHWAYS ENGINEER

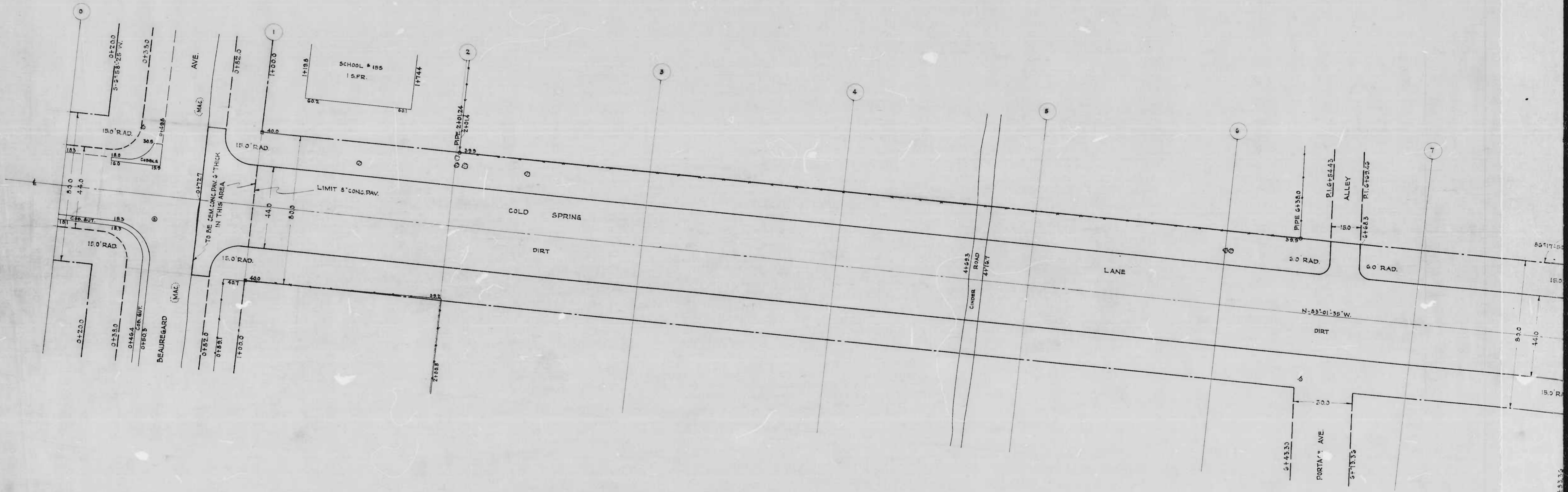
APPROVED - *Frank H. ...*
 ENGR. - PLANS & SURVEYS

APPROVED - *Mark ...*
 CHIEF ENGINEER

Shot 2

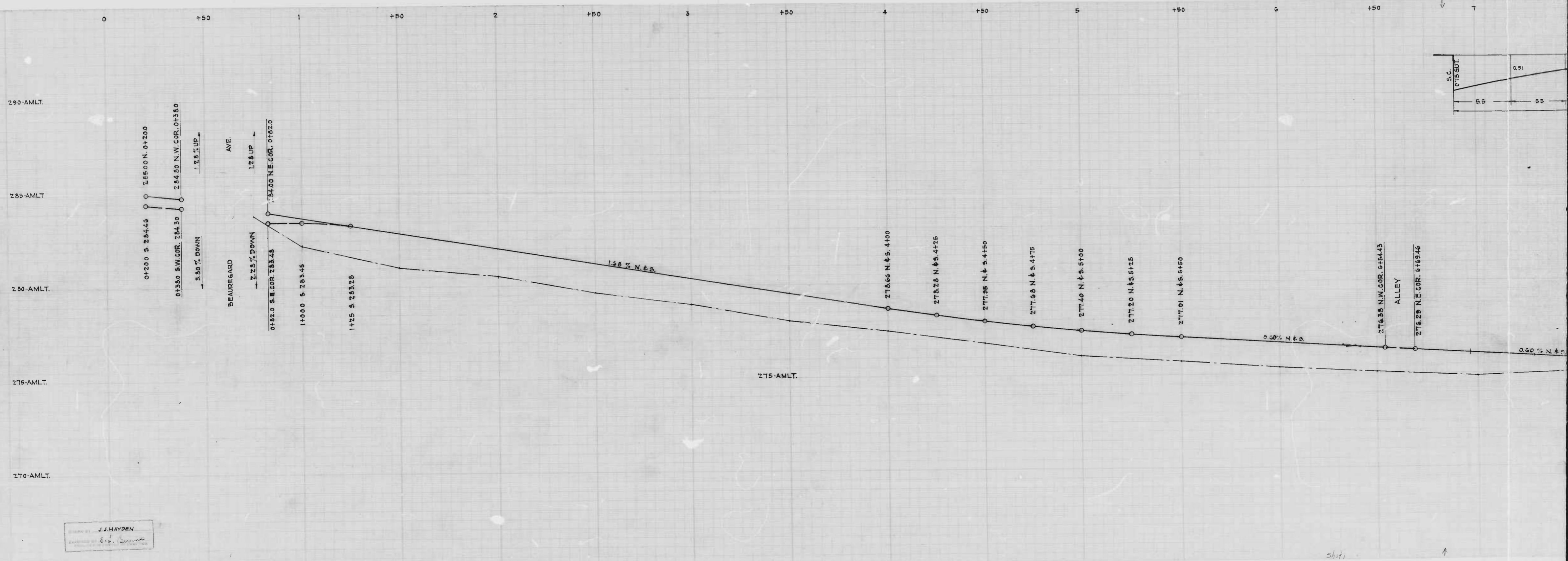


DESIGNED BY J.J. HAYDEN
 DRAWN BY *[Signature]*
 CHECKED BY *[Signature]*



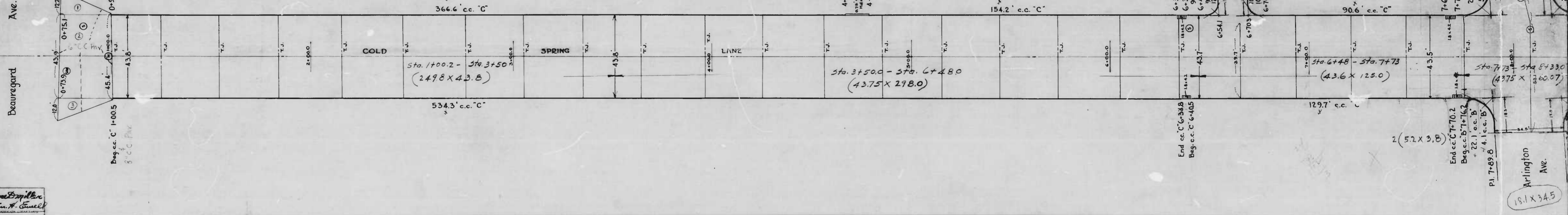
J.J. HAYDEN
CITY ENGINEER

Sheet



CONT'D. 18 855-X GOLD PLATING T.V. BE RECEIVED T.V.E. MOBLIWOOD D.S.

- 6" Cem. Conc. Pav.
- ① (6.5 X 24.8)
- ② (43.85 X 257)
- ③ (6.4 X 26.6)



Beauregard Ave.

(11.8' Hdr.)

1835X152

28.35 X 30.2

Superior Miller
Wm. H. Small

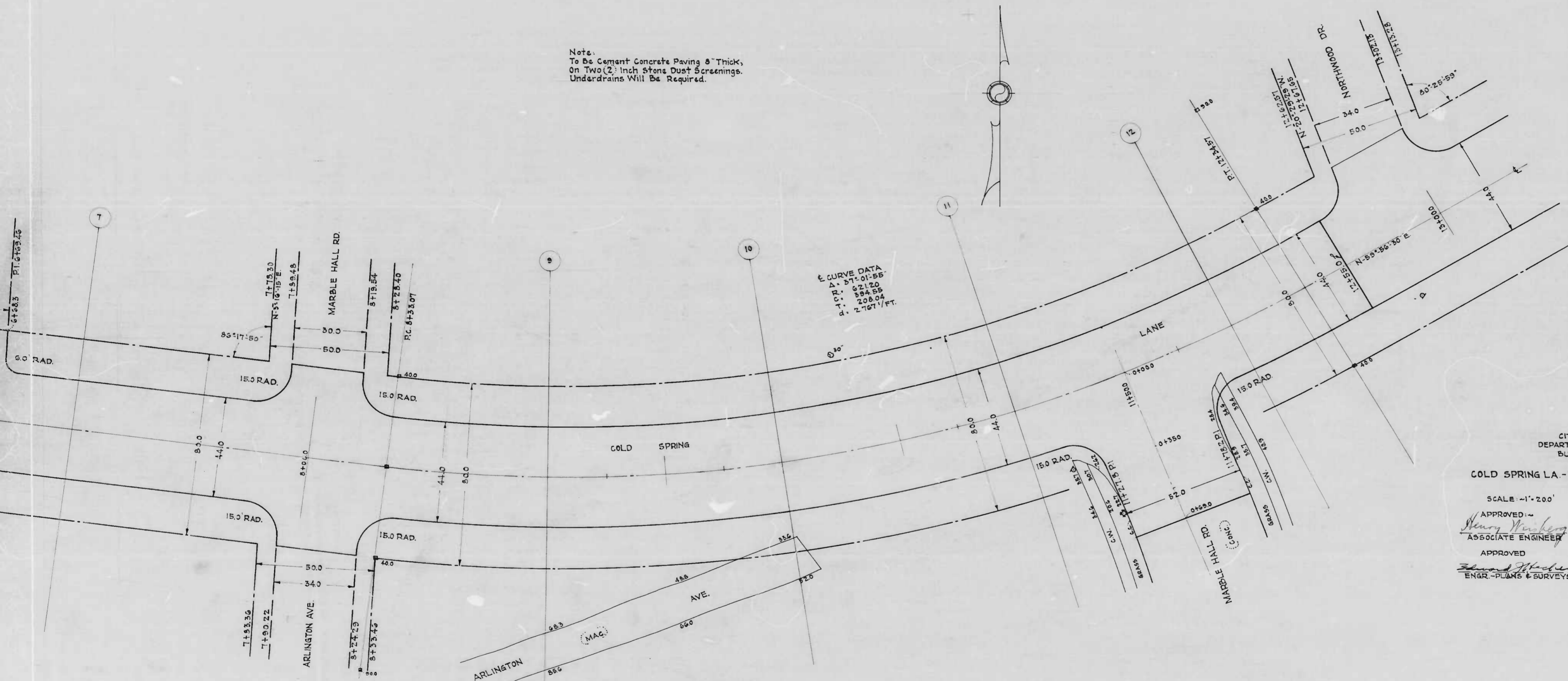
18.1 X 34.5

Shot 1

1

Note.
To Be Cement Concrete Paving 8" Thick,
On Two (2) Inch Stone Dust Screenings.
Underdrains Will Be Required.

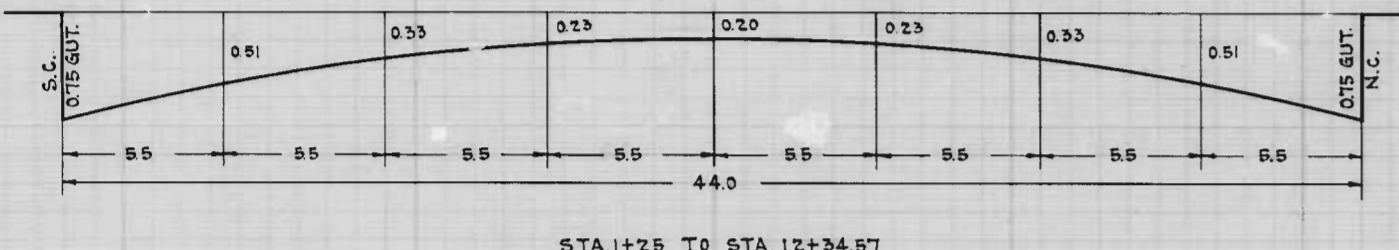
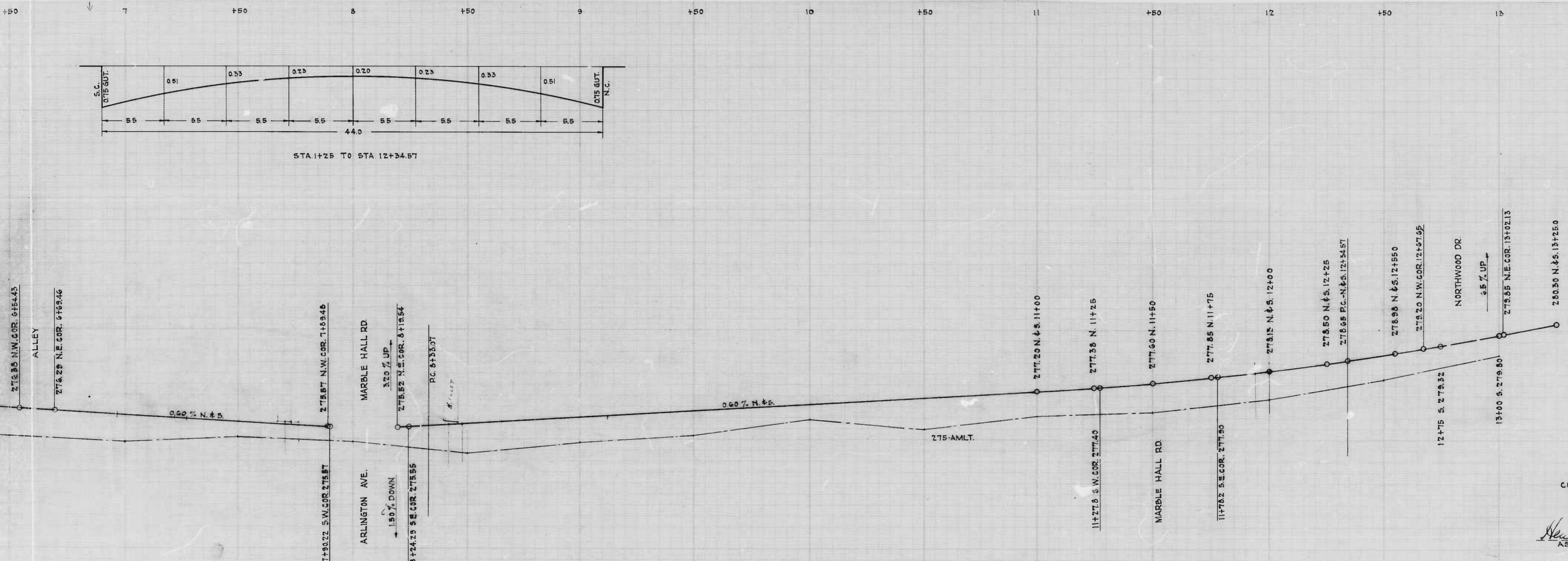
E CURVE DATA
Δ = 371-01-55
R = 621.20
C = 584.55
T = 208.04
d = 2.1071/FT.



CITY OF BALTIMORE
DEPARTMENT OF PUBLIC WORKS
BUREAU OF HIGHWAYS
PLAN OF
COLD SPRING LA. - BEAUREGARD AVE TO NORTHWOOD DR.
CONT. N. 832

SCALE - 1" = 200'
BOOK N-X-184
DATE - 3-26-47
APPROVED: *Henry V. ...*
ASSOCIATE ENGINEER
APPROVED: *W. J. ...*
HIGHWAYS ENGINEER
APPROVED: *Edward ...*
ENGR. - PLANS & SURVEYS
APPROVED: *...*
CHIEF ENGINEER

COPY DRAWING FROM ORIGINAL AND REVISIONS TO BE MADE IN ORIGINAL ONLY
SCALE 1/4" = 100'

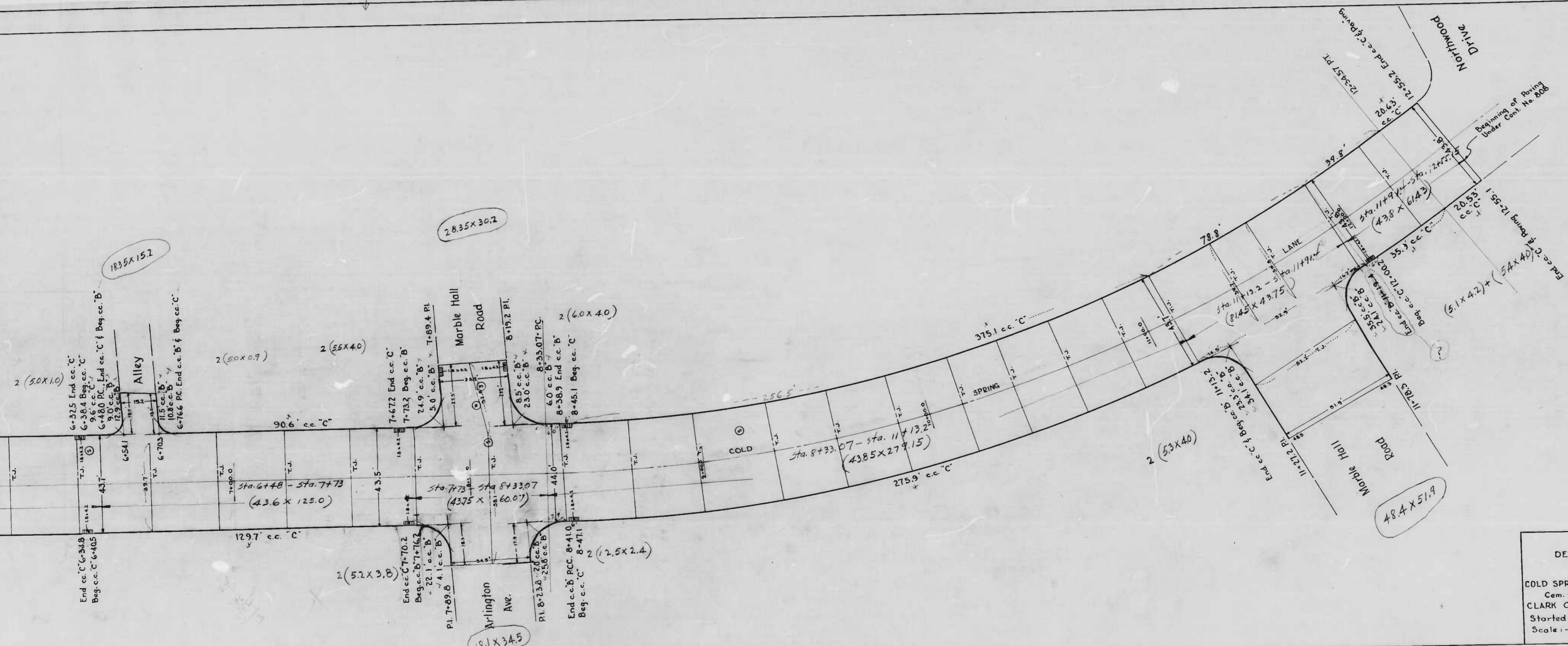


CITY OF BALTIMORE
 DEPARTMENT OF PUBLIC WORKS
 BUREAU OF HIGHWAYS
 PROFILE OF
 COLD SPRING LA.-BEAUREGARD AVE. TO NORTHWOOD DR.
 CONT. NF-832

SCALE: 1"=200'
 BOOK N-X-184
 DATE: 3-26-47

APPROVED: *Henry Weisberg* ASSOCIATE ENGINEER
 APPROVED: *W. J. Fischer* HIGHWAYS ENGINEER
 APPROVED: *Edward H. ...* ENGR.-PLANS & SURVEYS
 APPROVED: *Mark ...* CHIEF ENGINEER

shot 2



CITY OF BALTIMORE
 DEPARTMENT OF PUBLIC WORKS
 BUREAU OF HIGHWAYS
 Cont. No. 632
 COLD SPRING LA. - BEAUREGARD AVE. - NORTHWOOD DR.
 Cem. Conc. Paving, Eight (8) Inches Thick
 CLARK CONTRACTING CO. Contractor
 Started - 5-14-47 Completed - 8-11-47
 Scale - 1" = 20.0' Date - 9-23-47

COPY: 18 835 X
 CONT. 832 17 1/2 IN. BY 11 IN. BOARD - V.L.B. WASHINGTON, D.C.

Shot 1

1

Shot 2