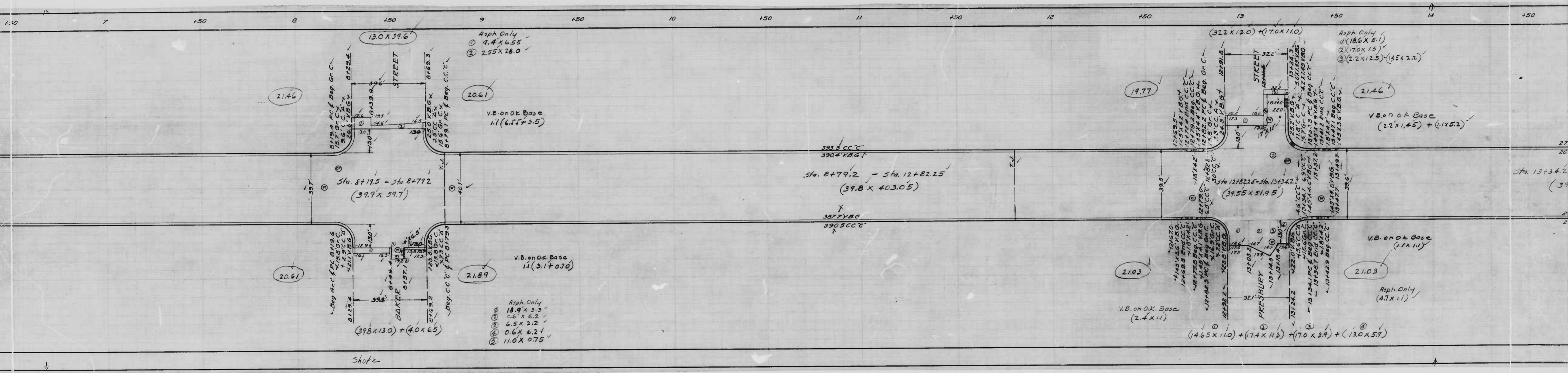
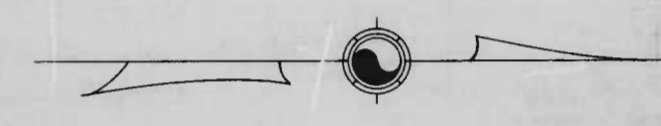
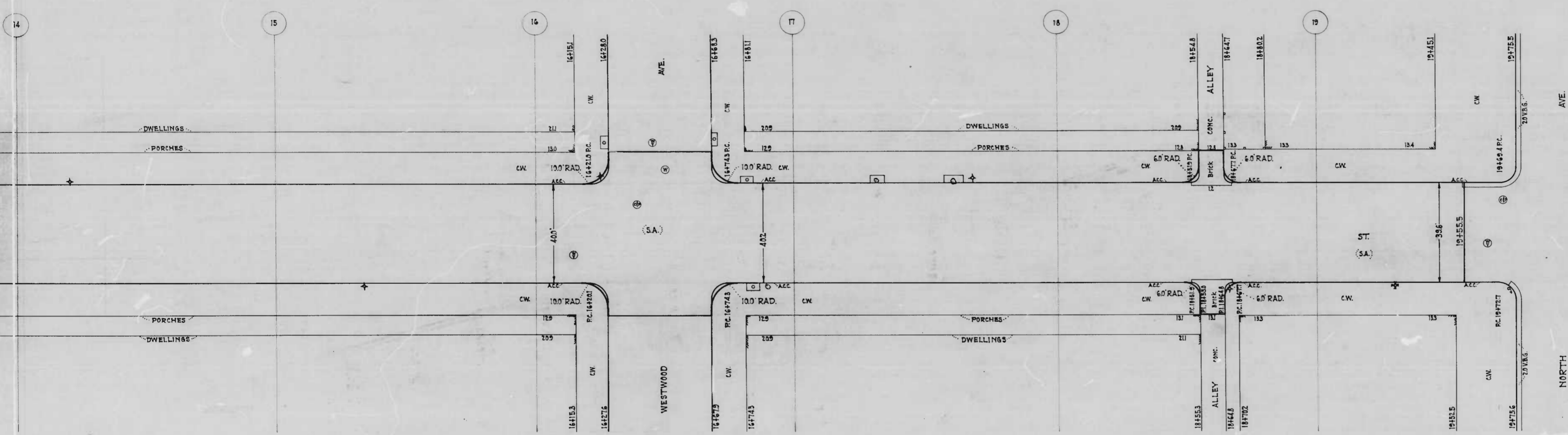


Shot 2  
 No. 10 100  
 1/20 11 100 to 11 000





CITY OF BALTIMORE  
 DEPARTMENT OF PUBLIC WORKS  
 BUREAU OF HIGHWAYS  
 PLAN OF  
 BENTALOU ST.-N. END W.M.R.R. BRIDGE TO NORTH AVE.  
 SCALE: 1"=200' BOOK NO. X-222 DATE: FEB. 3, 1947  
 CONT. NO. 630

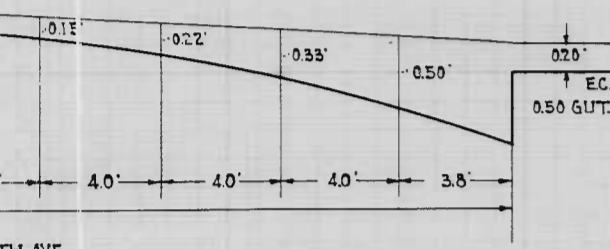
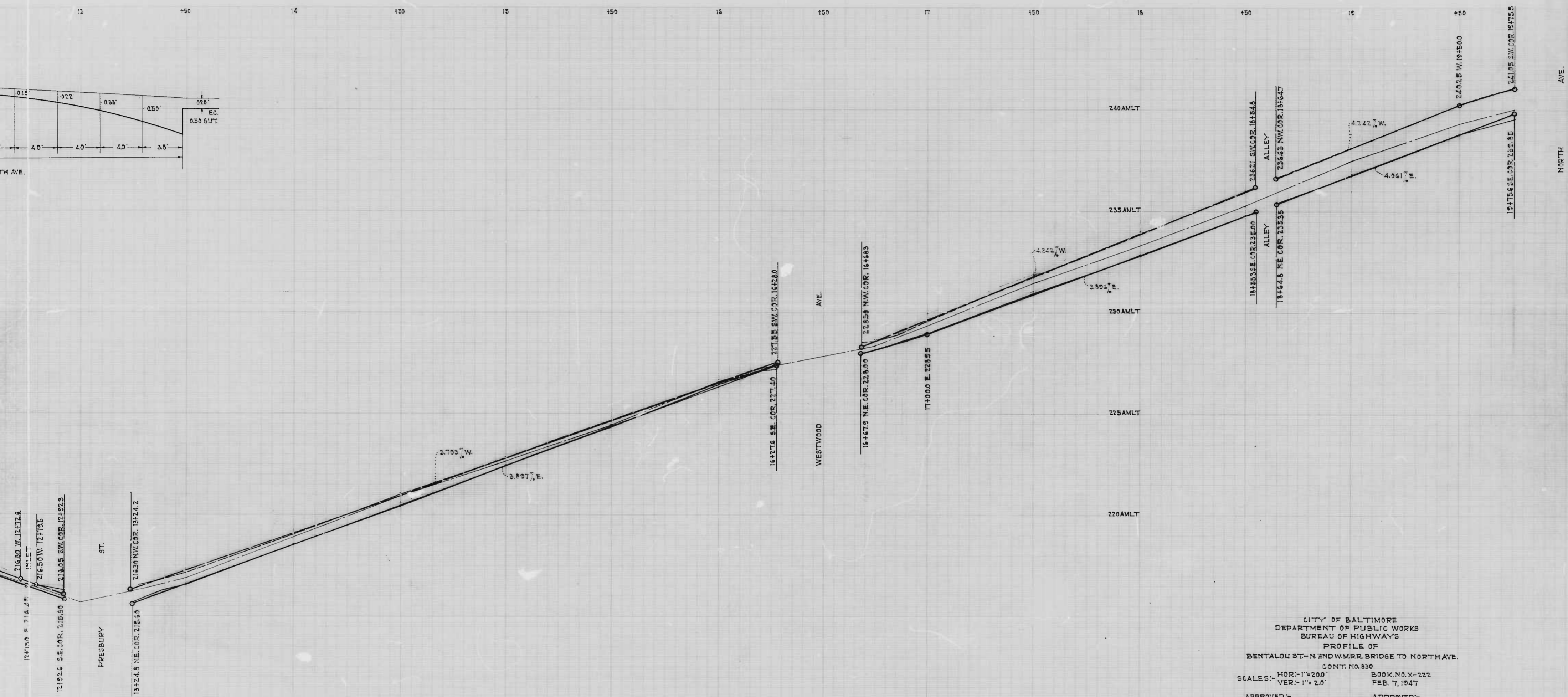
APPROVED:-  
*Henry Weiskopf*  
 ASSOCIATE ENGINEER.

APPROVED:-  
*W. H. G. Fisher*  
 HIGHWAYS ENGINEER.

APPROVED:-  
*Edward Hoffman*  
 ENGR. PLANS & SURVEYS

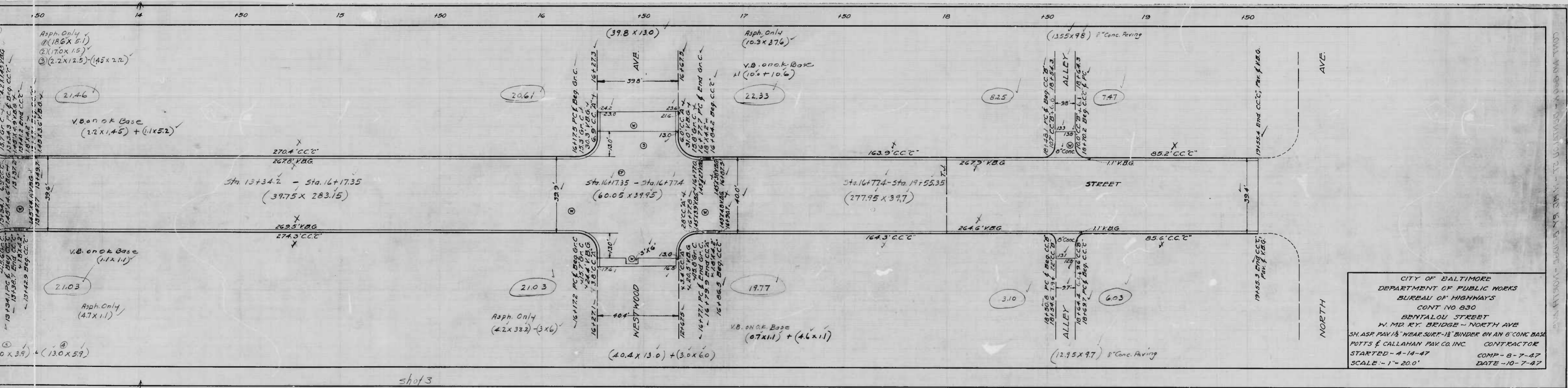
APPROVED:-  
*John R. Smith*  
 CHIEF ENGINEER.

443

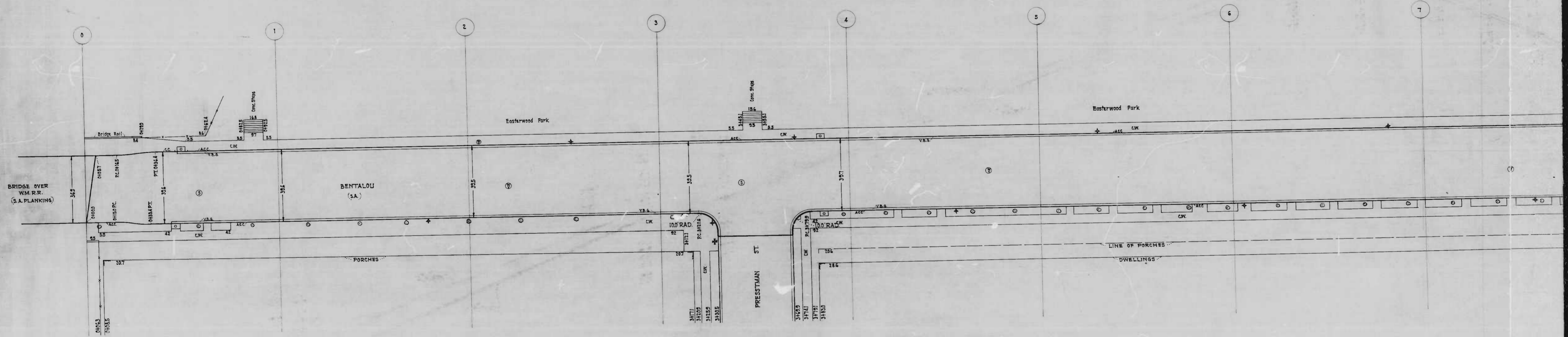


CITY OF BALTIMORE  
 DEPARTMENT OF PUBLIC WORKS  
 BUREAU OF HIGHWAYS  
 PROFILE OF  
 BENTALOU ST.-N. END WM.RR. BRIDGE TO NORTH AVE.  
 CONT. NO. 830  
 SCALES: HOR.-1"=200' BOOK NO. X-222  
 VER.-1"=2.0' FEB. 7, 1947  
 APPROVED: APPROVED:  
 Henry Weisberg, Associate Engineer. W. D. Fisher, Highways Engineer.  
 APPROVED: APPROVED:  
 Edward J. Hadden, Engr. Plans & Surveys. Frank R. Smith, Chief Engineer.

shot 3

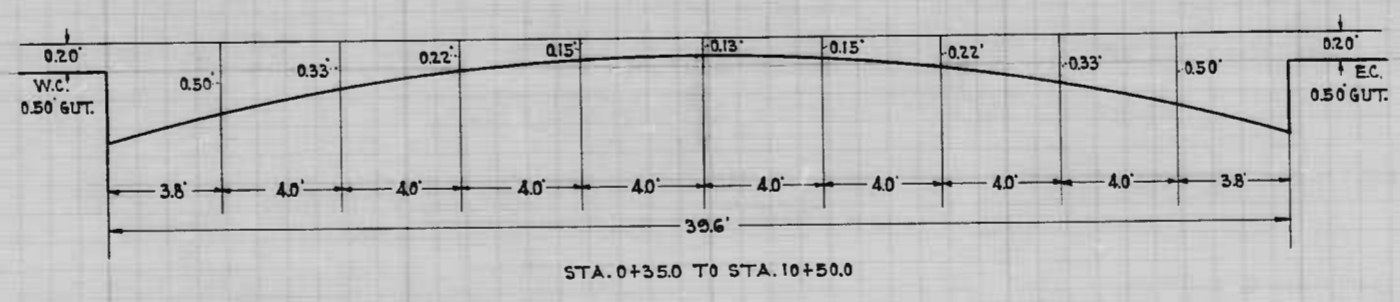
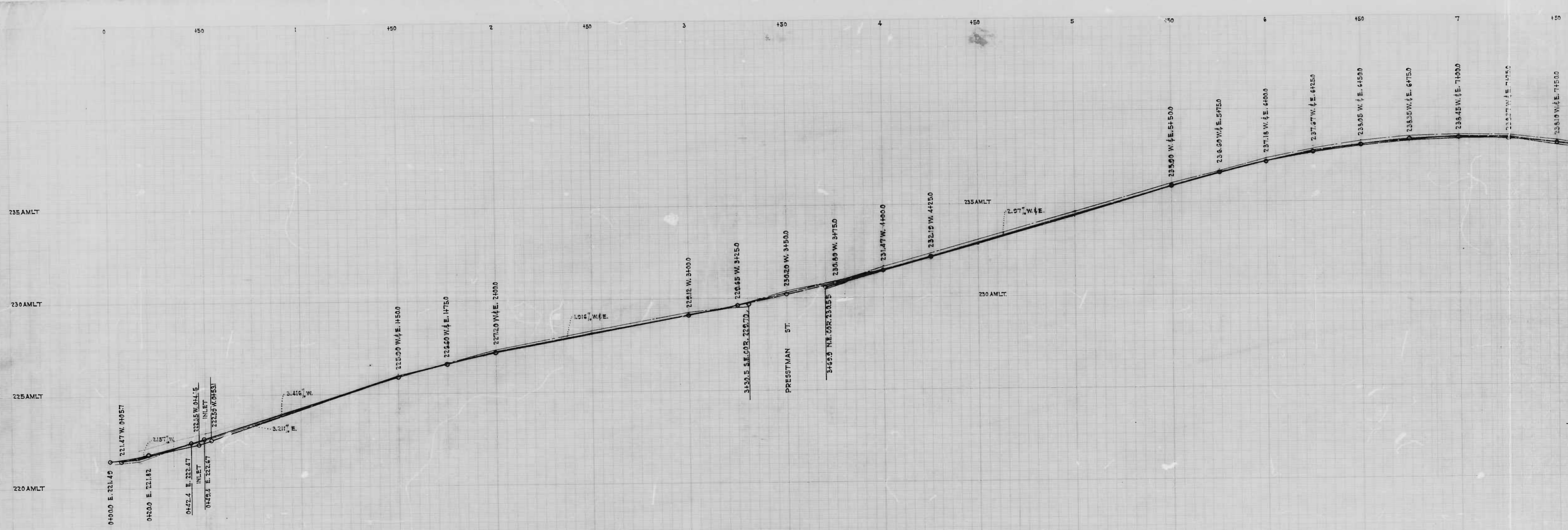


CITY OF BALTIMORE  
 DEPARTMENT OF PUBLIC WORKS  
 BUREAU OF HIGHWAYS  
 CONT NO 830  
 BRYANTOL STREET  
 W. MD. KY. BRIDGE - NORTH AVE  
 SH. ASP. PAV. 1/2" WEAR SURF - 1/2" BINDER ON AN 8" CONC. BASE  
 PUTTS & CALLAHAN PAV. CO. INC. CONTRACTOR  
 STARTED - 4-14-47 COMP - 8-7-47  
 SCALE - 1" = 20.0' DATE - 10-7-47



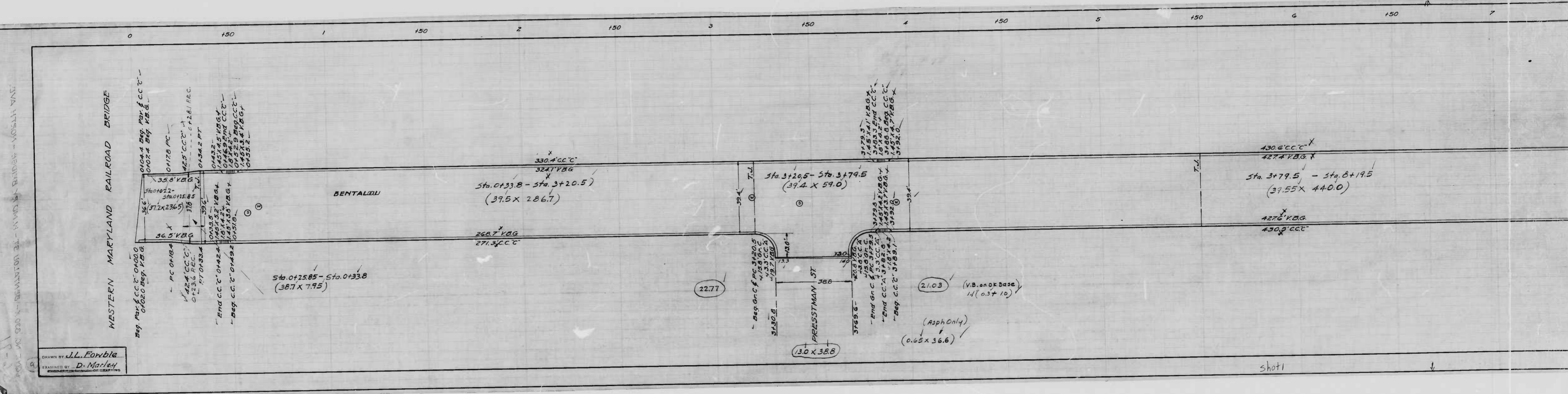
D. Merley  
S. L. Burns

shot



D. Marley  
S. J. [unclear]

5-11



WESTERN MARYLAND RAILROAD BRIDGE

BENTALIQU

shot 1

DRAWN BY J.L. Fomble  
 EXAMINED BY D. Marley

100' - 10' 000 X - BIRMINGHAM ST. - WASH. ST. BRIDGE - WASH. ST.



