

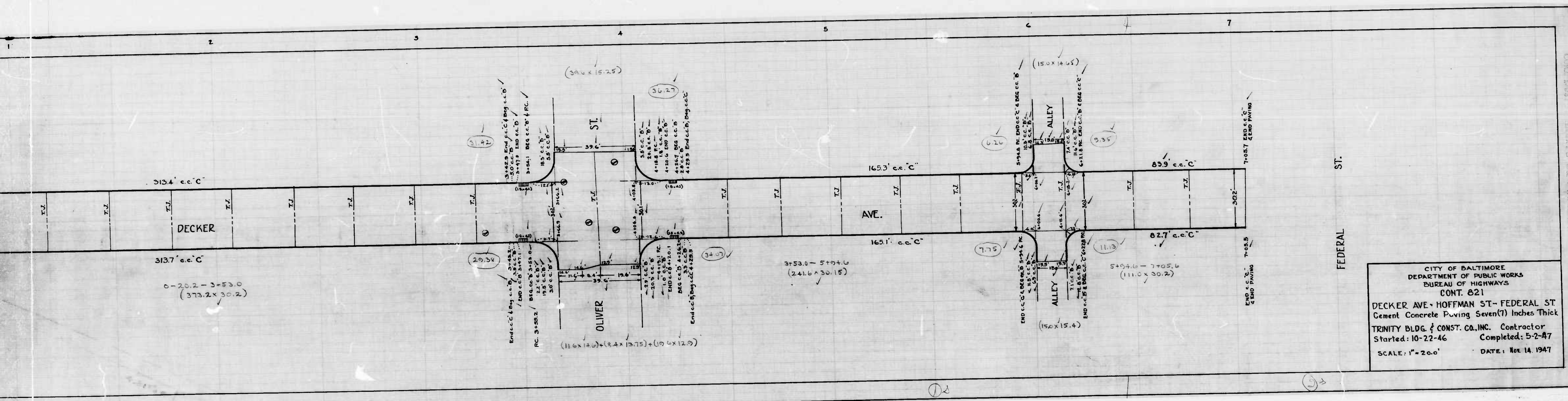
NOTE  
The issuance of this plan & profile does not commit the city to the acceptance and/or improvement of any thoroughfare shown hereon.

CITY OF BALTIMORE  
DEPARTMENT OF PUBLIC WORKS  
BUREAU OF HIGHWAYS  
PLAN & PROFILE  
DECKER AVE. - HOFFMAN ST. TO FEDERAL ST.  
CONT. NO. 821  
PLAN: 1" = 20.0'  
SCALE: HOR. 1" = 200'  
PROFILE: VER. 1" = 20'

APPROVED: *Henry Winkler*  
ASSOCIATE ENGINEER  
APPROVED: *W. D. Fisher*  
HIGHWAYS ENGINEER  
APPROVED: *Edward H. Fisher*  
ENGR. PLANS & SURVEYS  
APPROVED: *William P. Smith*  
CHIEF ENGINEER

DECKER AVE. - HOFFMAN ST. TO FEDERAL ST.  
PLAN & PROFILE CONT. NO. 821





CITY OF BALTIMORE  
 DEPARTMENT OF PUBLIC WORKS  
 BUREAU OF HIGHWAYS  
 CONT. 821  
 DECKER AVE. - HOFFMAN ST. - FEDERAL ST.  
 Cement Concrete Paving Seven (7) Inches Thick  
 TRINITY BLDG. & CONST. CO., INC. Contractor  
 Started: 10-22-46 Completed: 5-2-47  
 SCALE: 1" = 20.0' DATE: Nov. 14, 1947





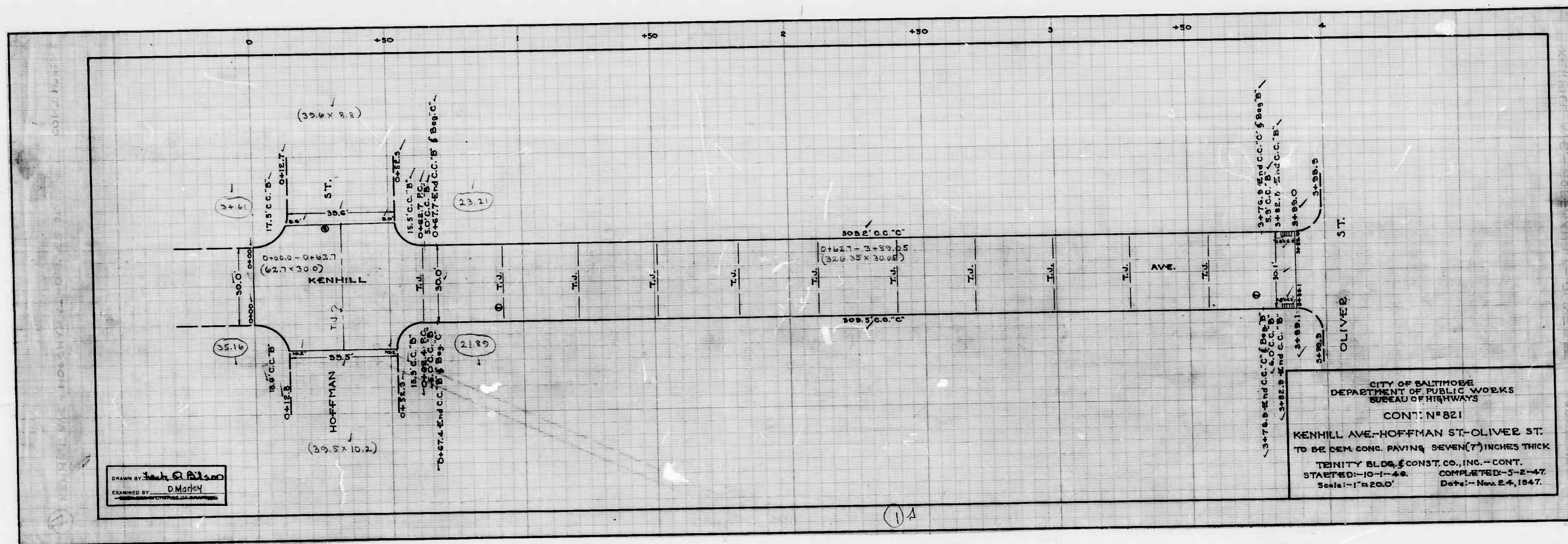








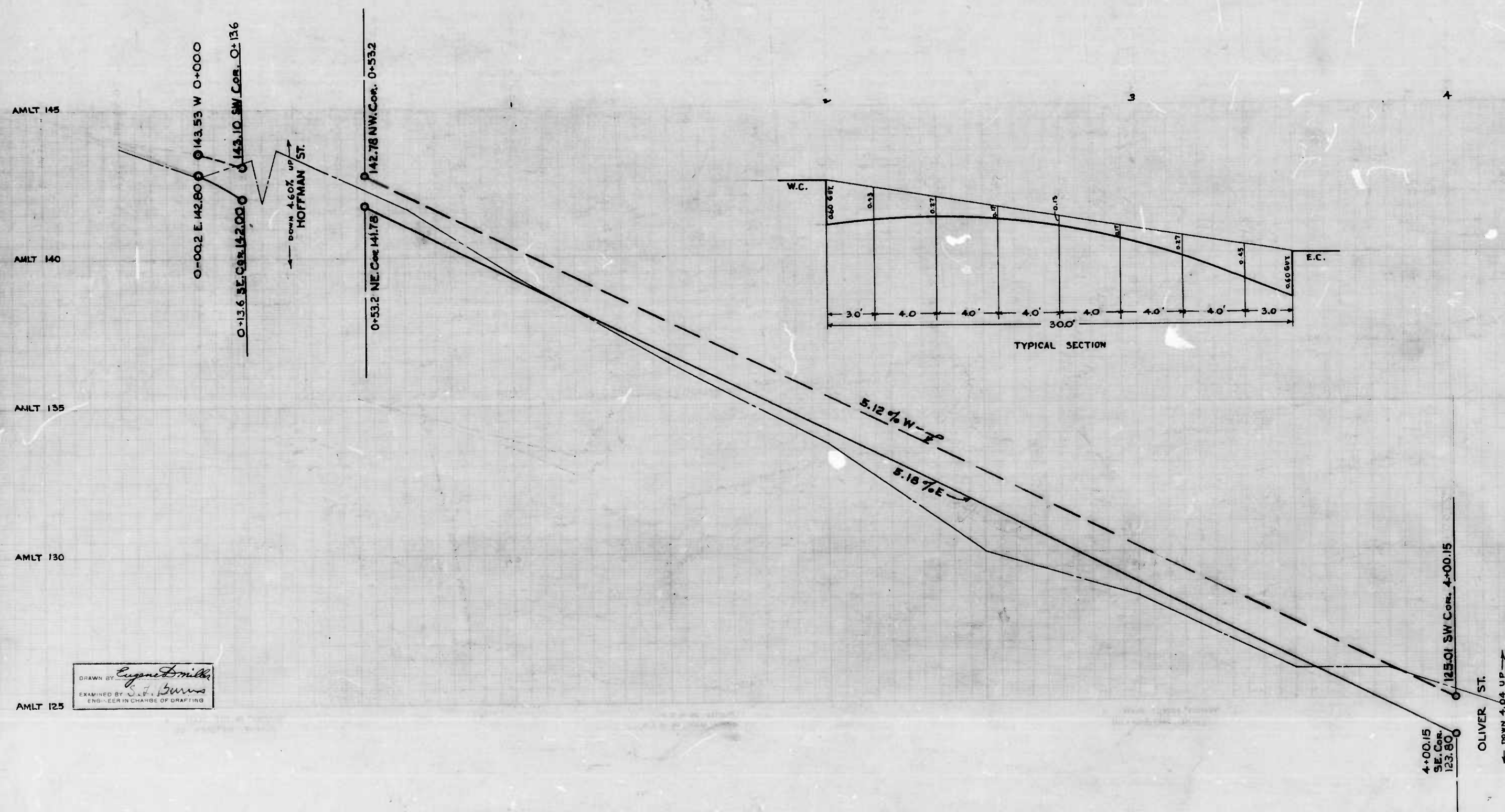
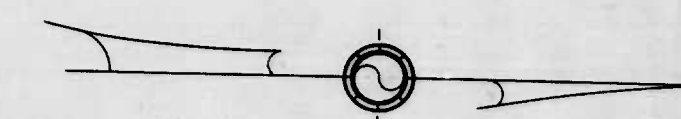
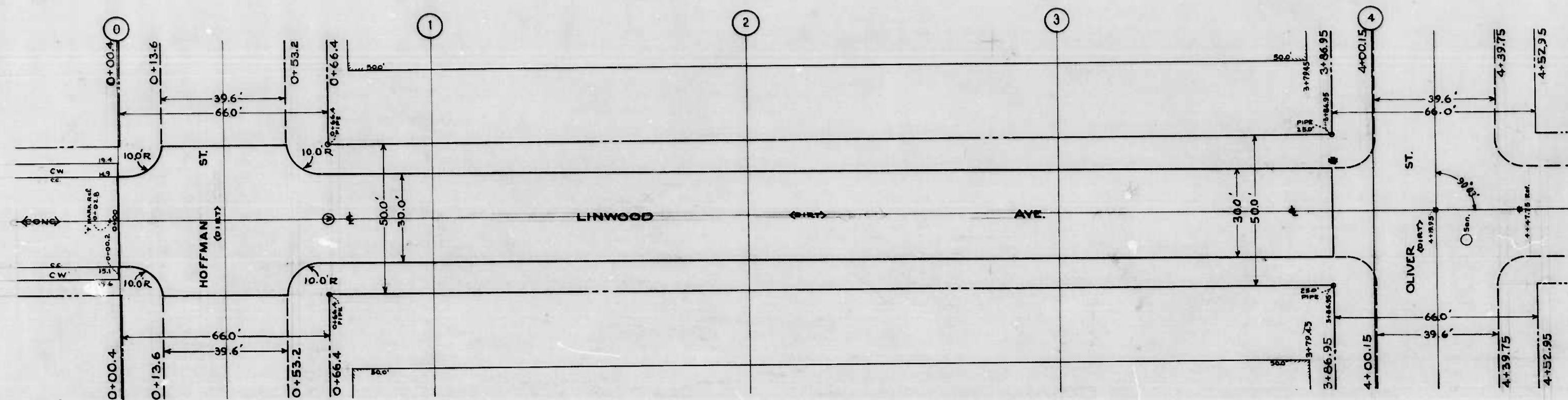




DRAWN BY: Jack C. Bilsdo  
 EXAMINED BY: D. Martin

14





Note -  
The issuance of this plan & profile does not commit the city to the acceptance and/or improvement of any thoroughfare shown hereon.

CITY OF BALTIMORE  
DEPARTMENT OF PUBLIC WORKS  
BUREAU OF HIGHWAYS  
PLAN & PROFILE  
LINWOOD AVE. - HOFFMAN ST. - OLIVER ST.  
CONT. 821

SCALE - PLAN - 1" = 20.0' BOOK X-194  
PROFILE - 1" = 20.0' JULY 12, 1946

APPROVED: -  
*Henry W. ...*  
ASSOCIATE ENGINEER

APPROVED: -  
*W. A. ...*  
HIGHWAYS ENGINEER

APPROVED: -  
*Edward ...*  
ENGR. - PLANS & SURVEYS

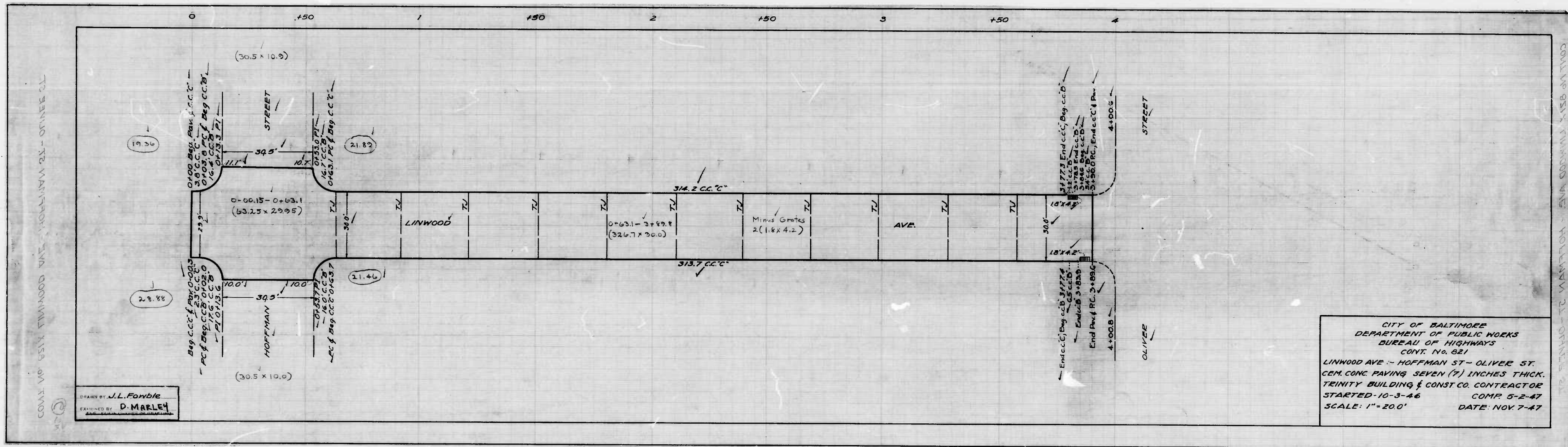
APPROVED: -  
*Walter ...*  
CHIEF ENGINEER

Drawn by *Eugene ...*  
Examined by *...*  
1946 - 12 - 12

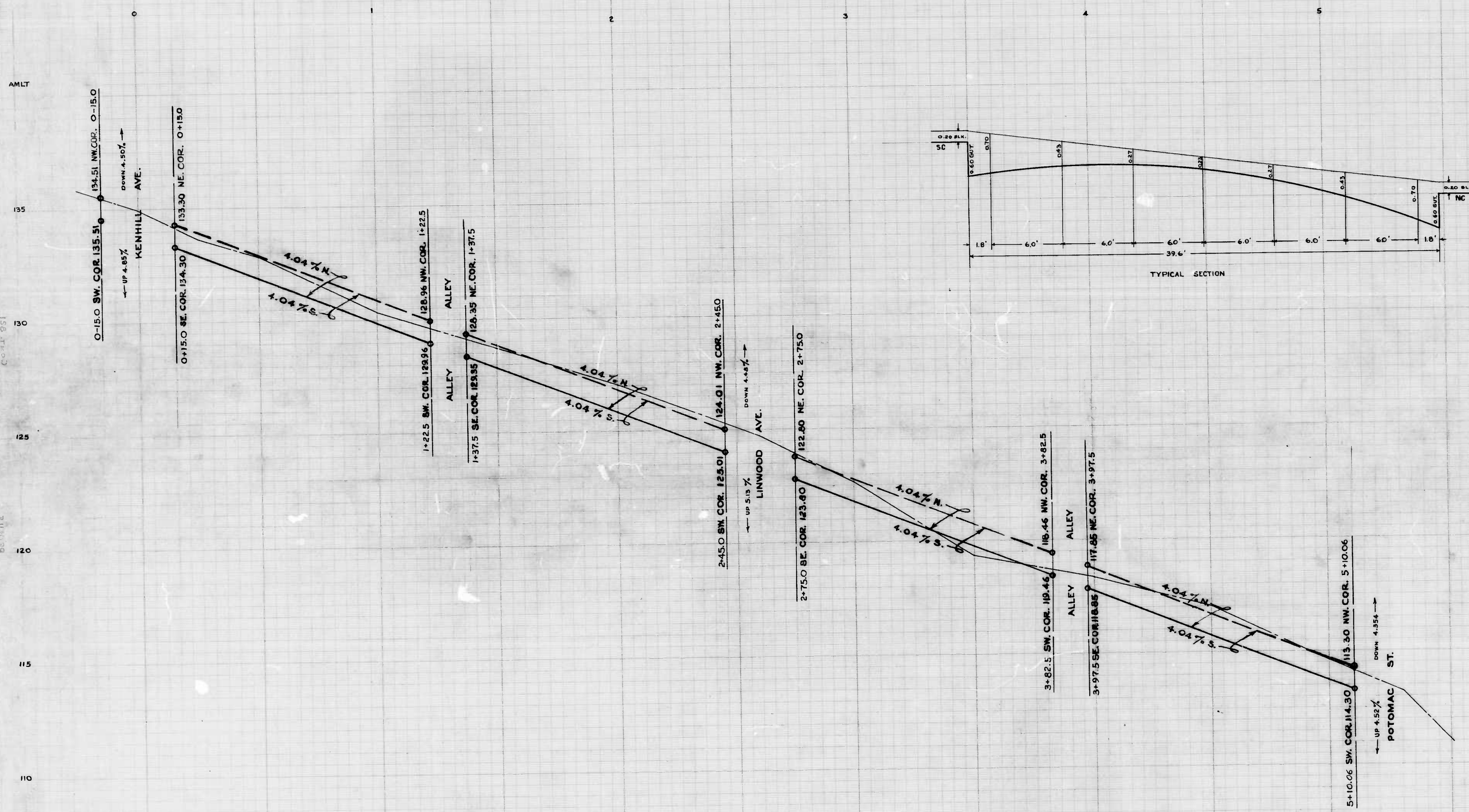
LINWOOD AVE. - HOFFMAN ST. - OLIVER ST. CONT. 821

LINWOOD AVE. - HOFFMAN ST. - OLIVER ST. CONT. 821









*Note*  
 The issuance of this profile does not commit the city to the acceptance and/or improvement of any thoroughfare shown hereon.

CITY OF BALTIMORE  
 DEPARTMENT OF PUBLIC WORKS  
 BUREAU OF HIGHWAYS

PROFILE  
 OLIVER ST. - KENHILL AVE. - POTOMAC ST.  
 CONT. 821

SCALE - HOR. - 1" = 200'  
 VER. - 1" = 2.0'

BOOK X-194  
 JULY 17, 1946

APPROVED ~

*Henry Wecker*  
 ASSOCIATE ENGINEER

APPROVED ~

*W. J. Fisher*  
 HIGHWAYS ENGINEER

APPROVED ~

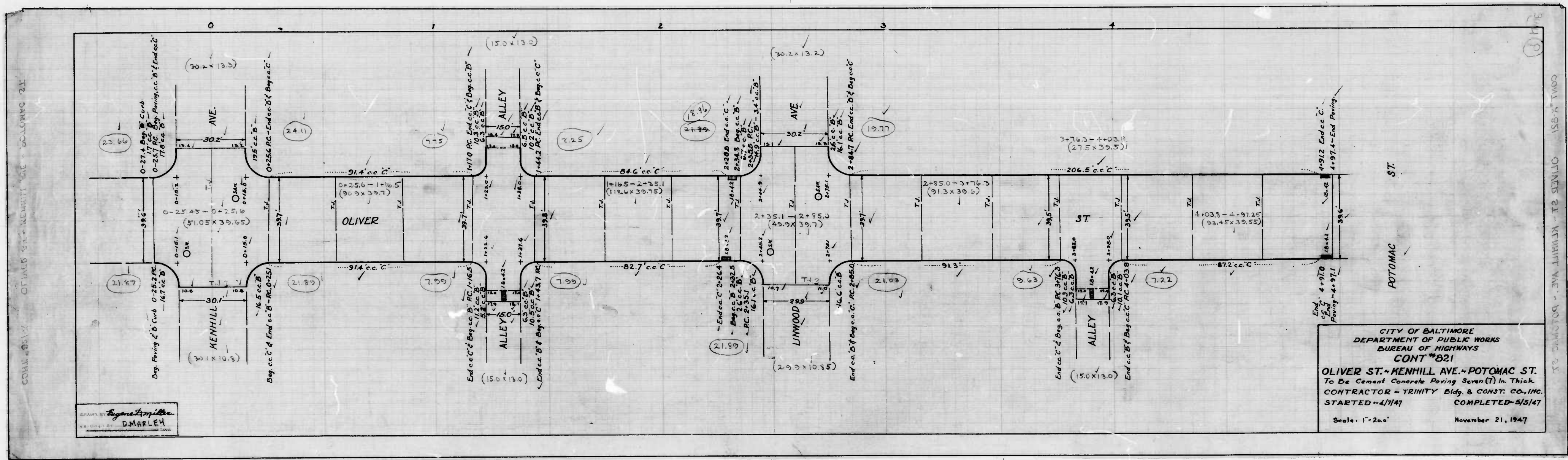
*Edward J. Walker*  
 ENGR. - PLANS & SURVEYS

APPROVED ~

*Robert R. Smith*  
 CHIEF ENGINEER

*Edward J. Walker*  
 Engr. - Plans & Surveys



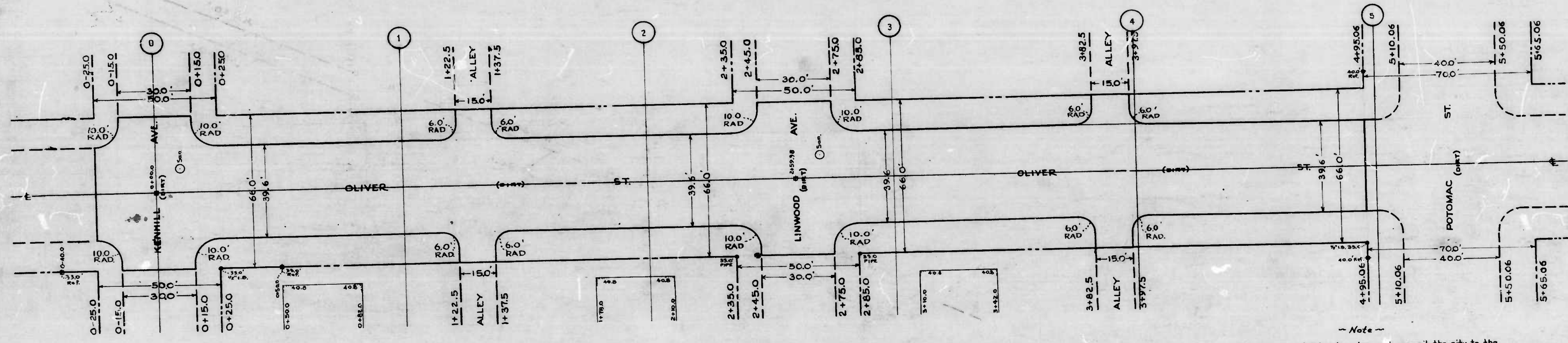


Engineer  
D. MARLEY

CITY OF BALTIMORE  
DEPARTMENT OF PUBLIC WORKS  
BUREAU OF HIGHWAYS  
CONT #821  
OLIVER ST. - KINHILL AVE. - POTOMAC ST.  
To Be Cement Concrete Paving Seven (7) In. Thick  
CONTRACTOR - TRINITY Bldg. & CONST. CO., INC.  
STARTED - 4/1/47 COMPLETED - 5/5/47  
Scale: 1" = 200' November 21, 1947



CHART 21, REPAIRS TO LALOWVC 21  
COPY 851

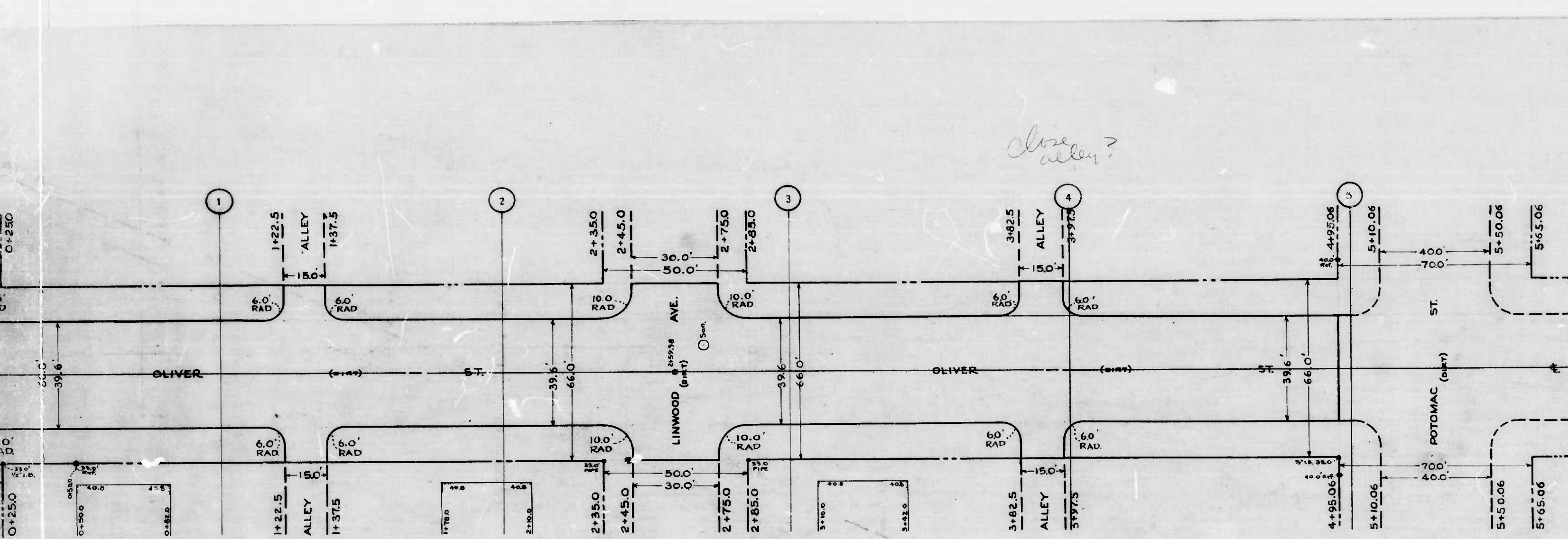


*Note*  
The issuance of this plan does not commit the city to the acceptance and/or improvement of any thoroughfare shown hereon.

Drawn by *Eugene Smiller*  
Examined by *J. W. ...*  
ENGR. PLANS & SURVEYS

CITY OF BALTIMORE  
DEPARTMENT OF PUBLIC WORKS  
BUREAU OF HIGHWAYS  
- PLAN -  
OLIVER ST. - KENHILL AVE. - POTOMAC ST.  
CONT. 821  
SCALE 1" = 20.0' 300K X 194  
APPROVED: *[Signature]* ASSOCIATE ENGINEER  
APPROVED: *[Signature]* CHIEF ENGINEER  
ENGR. PLANS & SURVEYS





*Close alley?*



- Note -  
 The issuance of this plan does not commit the city to the acceptance and/or improvement of any thoroughfare shown hereon.

CITY OF BALTIMORE  
 DEPARTMENT OF PUBLIC WORKS  
 BUREAU OF HIGHWAYS  
 - PLAN -  
 OLIVER ST. - KENHILL AVE. - POTOMAC ST.  
 CONT. 821

SCALE 1"=20' BOOK X194 JULY 15, 1946

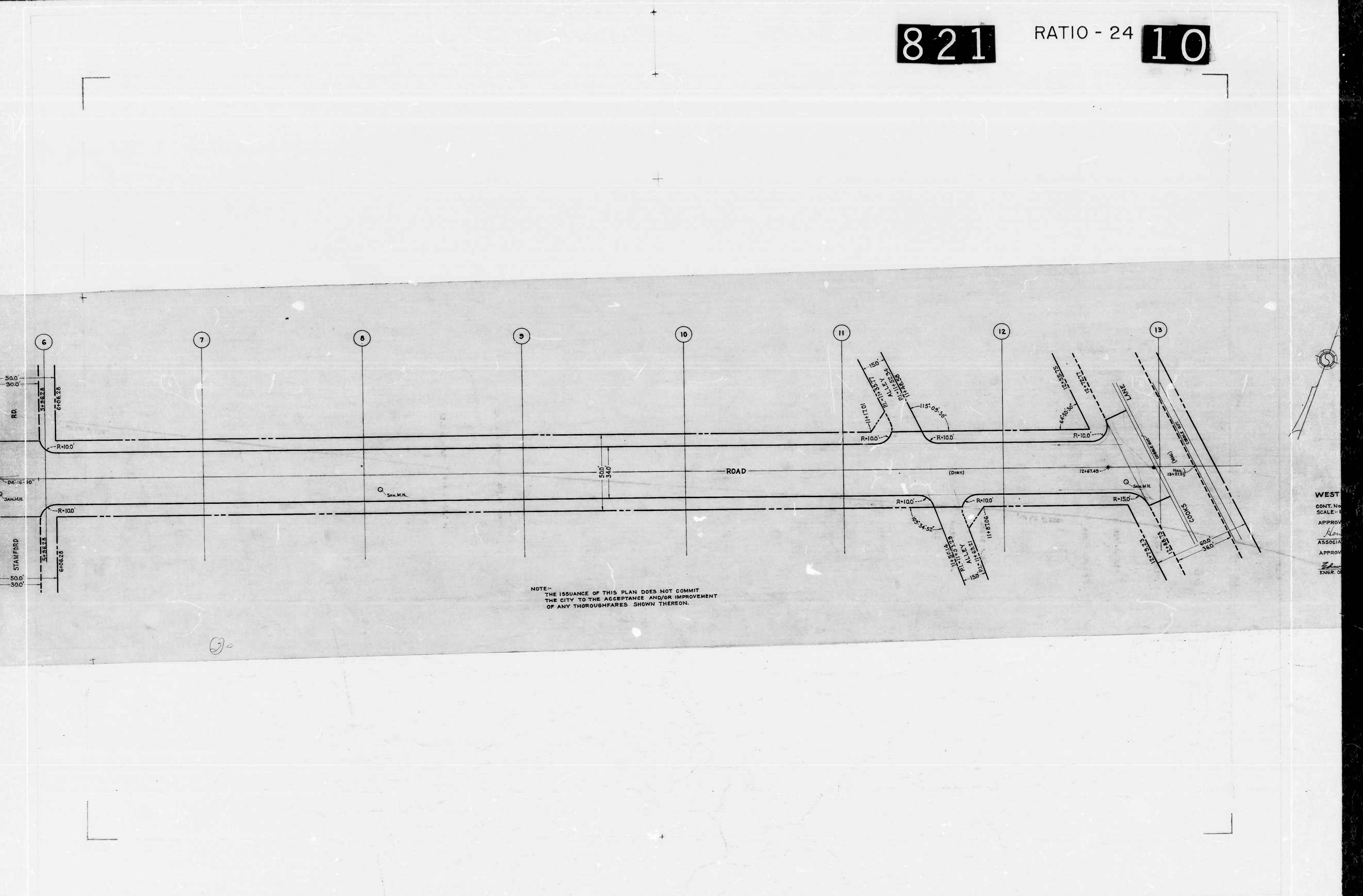
APPROVED:~ <i>Henry ...</i> ASSOCIATE ENGINEER	APPROVED:~ <i>W. H. ...</i> HIGHWAYS ENGINEER
APPROVED:~ <i>E. J. ...</i> ENGR. PLANS & SURVEYS	APPROVED:~ <i>...</i> CHIEF ENGINEER

OLIVER ST. - KENHILL AVE. - POTOMAC ST.  
 PLAN - CONT. 821

①

②





NOTE:-  
 THE ISSUANCE OF THIS PLAN DOES NOT COMMIT  
 THE CITY TO THE ACCEPTANCE AND/OR IMPROVEMENT  
 OF ANY THOROUGHFARES SHOWN THEREON.

WEST  
 CONT. No  
 SCALE: 1  
 APPROV  
 ASSOCI  
 APPROV  
 ENGR. O

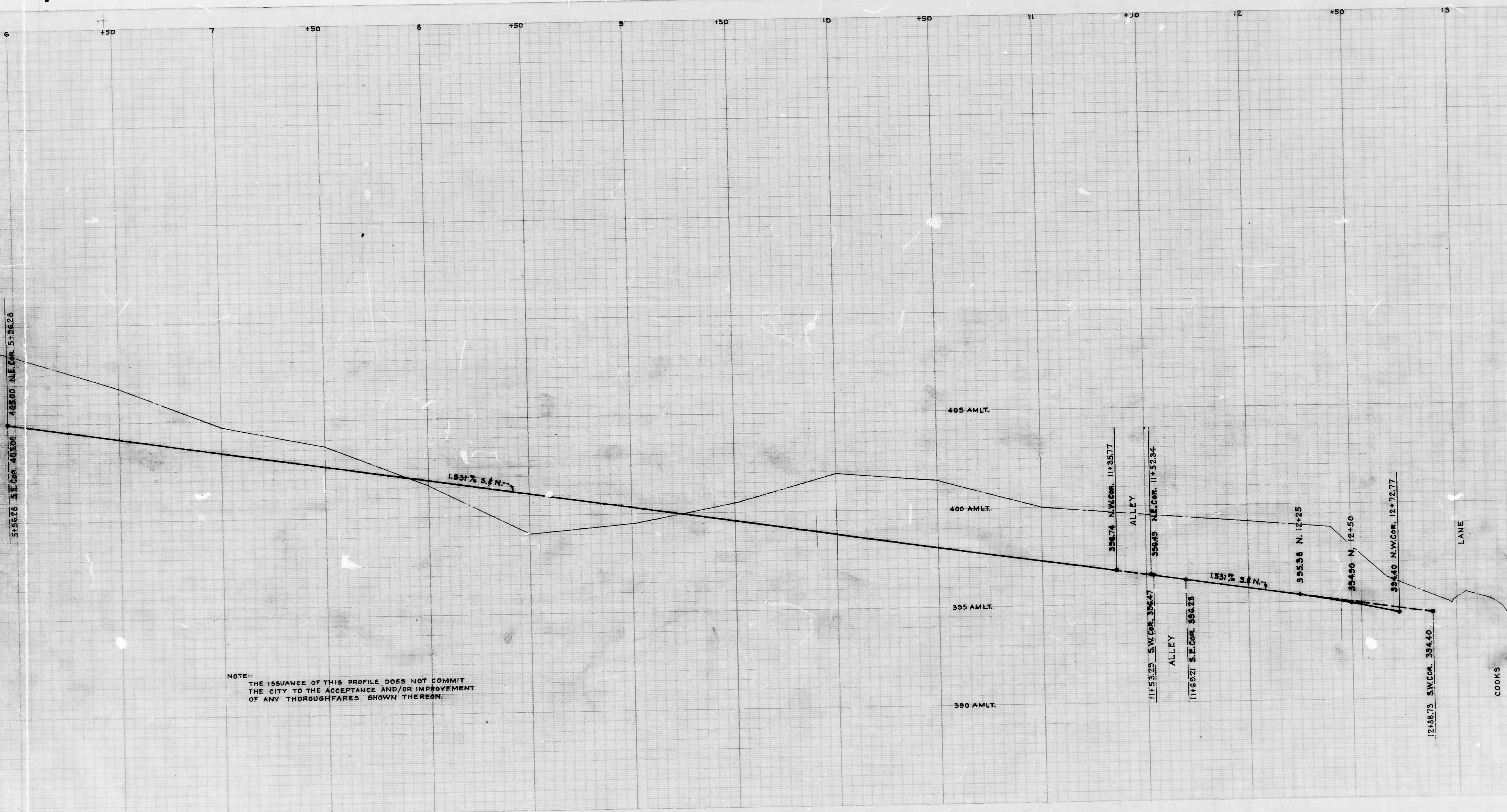
30



821

RATIO - 24

11



NOTE:  
 THE ISSUANCE OF THIS PROFILE DOES NOT COMMIT  
 THE CITY TO THE ACCEPTANCE AND/OR IMPROVEMENT  
 OF ANY THOROUGHFARES SHOWN THEREON.

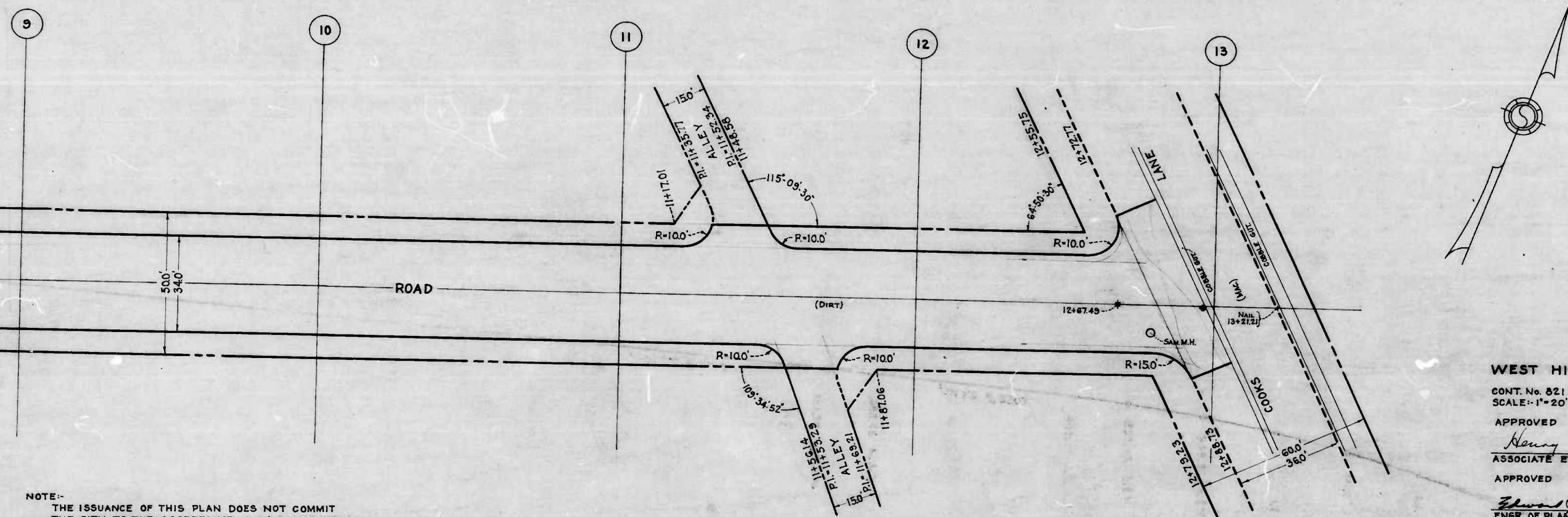
WEST HILLS ROAD  
 SCALE: HOR: 1" = 20'  
 VER: 1" = 2'  
 APPROVED:  
*Henry Weisberg*  
 ASSOCIATE ENGINEER  
 APPROVED:  
*Edward J. Hecker*  
 ENGR. OF PLANS & SURVEYS

②







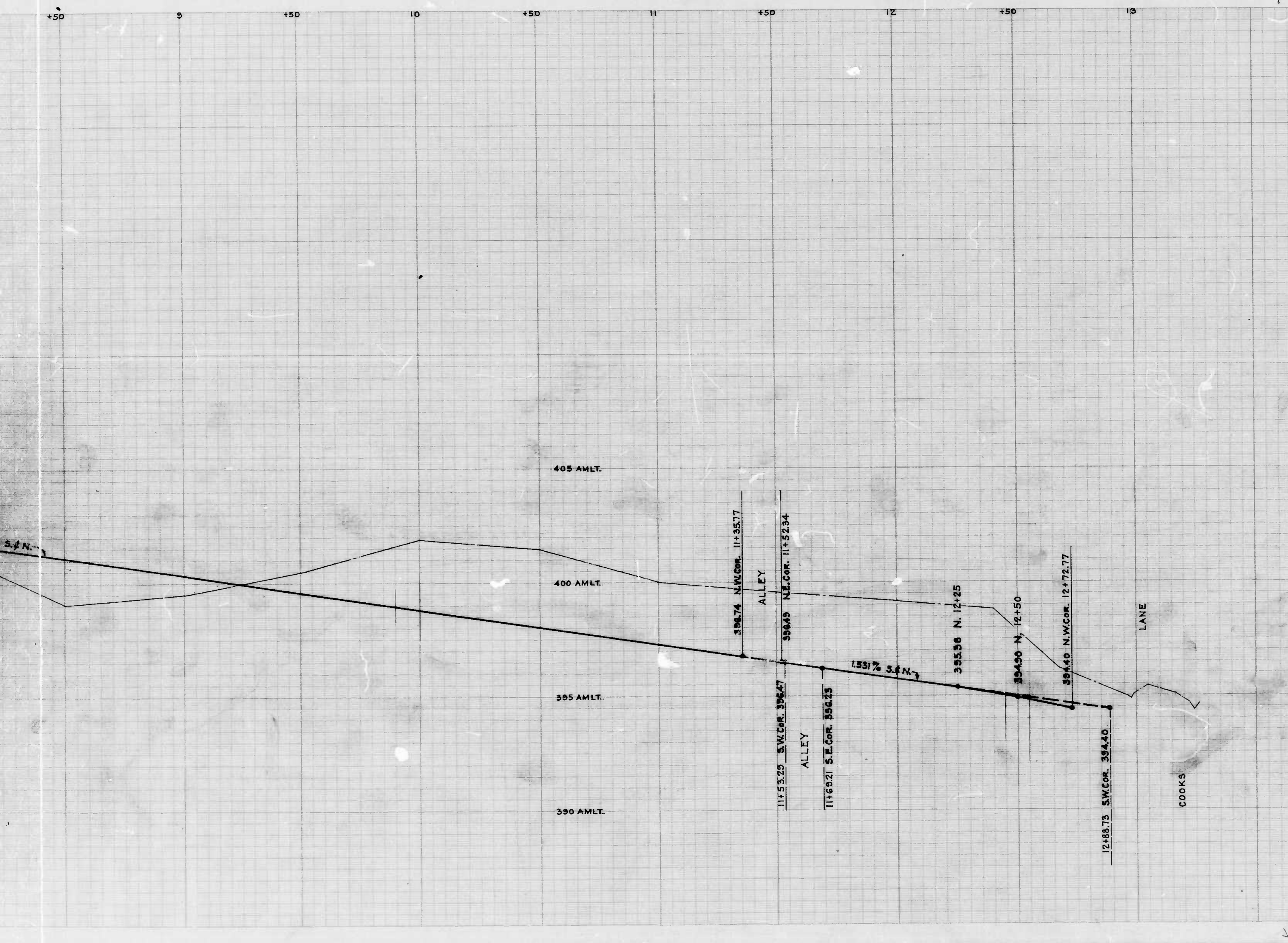


NOTE:-  
 THE ISSUANCE OF THIS PLAN DOES NOT COMMIT  
 THE CITY TO THE ACCEPTANCE AND/OR IMPROVEMENT  
 OF ANY THOROUGHFARES SHOWN THEREON.

CITY OF BALTIMORE  
 DEPARTMENT OF PUBLIC WORKS  
 BUREAU OF HIGHWAYS  
**PLAN OF  
 WEST HILLS ROAD - WESTERN CITY LINE - COOKS LANE**  
 CONT. No. 821  
 SCALE: 1" = 20'  
 APPROVED: *Henry Weisberg*  
 ASSOCIATE ENGINEER  
 APPROVED: *Edward H. Fisher*  
 ENGR. OF PLANS & SURVEYS  
 BOOK-X-207  
 DATE: AUG. 6, 1940  
 APPROVED: *W. J. Fisher*  
 HIGHWAYS ENGINEER  
 APPROVED: *Robert R. Smith*  
 CHIEF ENGINEER

WEST HILLS ROAD - WESTERN CITY LINE - COOKS LANE  
 PLAN OF ROAD NO. 821





CITY OF BALTIMORE  
 DEPARTMENT OF PUBLIC WORKS  
 BUREAU OF HIGHWAYS

**PROFILE OF  
 WEST HILLS ROAD - WESTERN CITY LINE - COOKS LANE**

CONT. No. 821

SCALE: HOR. 1" = 20'  
 VER. 1" = 2'

BOOK: X-207  
 DATE: AUG. 6, 1946

APPROVED: *Henry Weisberg*  
 ASSOCIATE ENGINEER

APPROVED: *W. J. Fowler*  
 HIGHWAYS ENGINEER

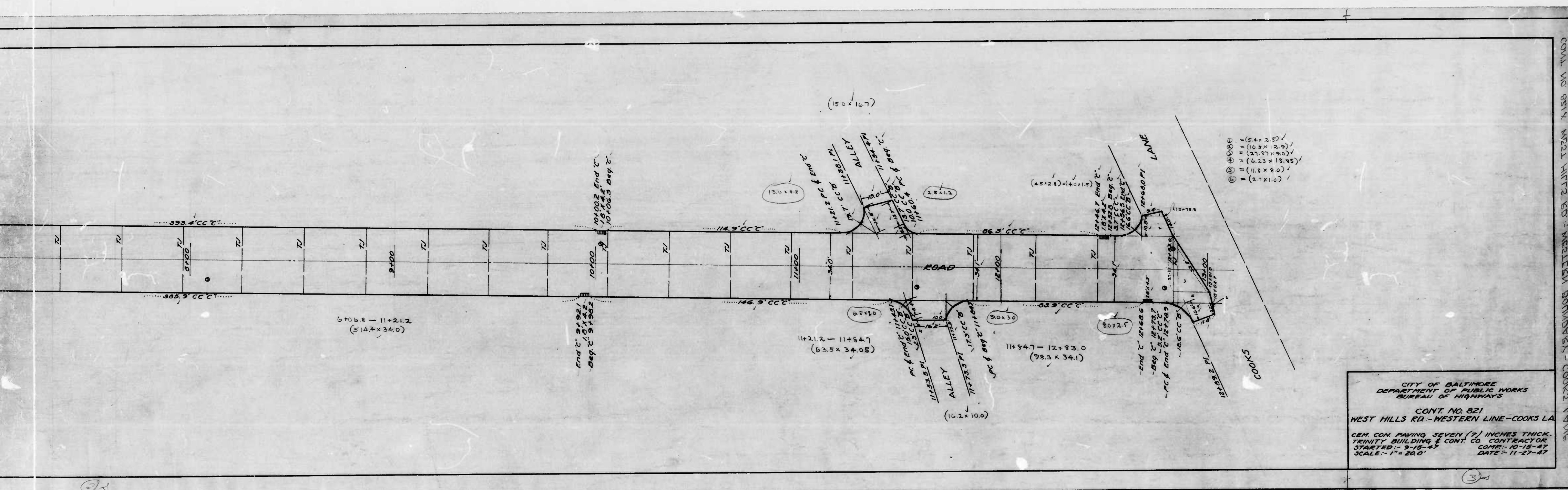
APPROVED: *Edward J. Harker*  
 ENGR. OF PLANS & SURVEYS

APPROVED: *Charles R. Smith*  
 CHIEF ENGINEER

11+53.29 S.W. COR. 11+69.21 S.E. COR. 11+94.74 N.W. COR. 11+96.49 N.E. COR. 11+95.77 N.W. COR. 12+25 N. 12+50 N. 12+72.77 N.W. COR. 12+88.73 S.W. COR.

32





- ① (5.4 x 2.5)
- ② (10.8 x 2.9)
- ③ (21.7 x 3.0)
- ④ (5.23 x 1.85)
- ⑤ (11.8 x 3.0)
- ⑥ (2.7 x 1.0)

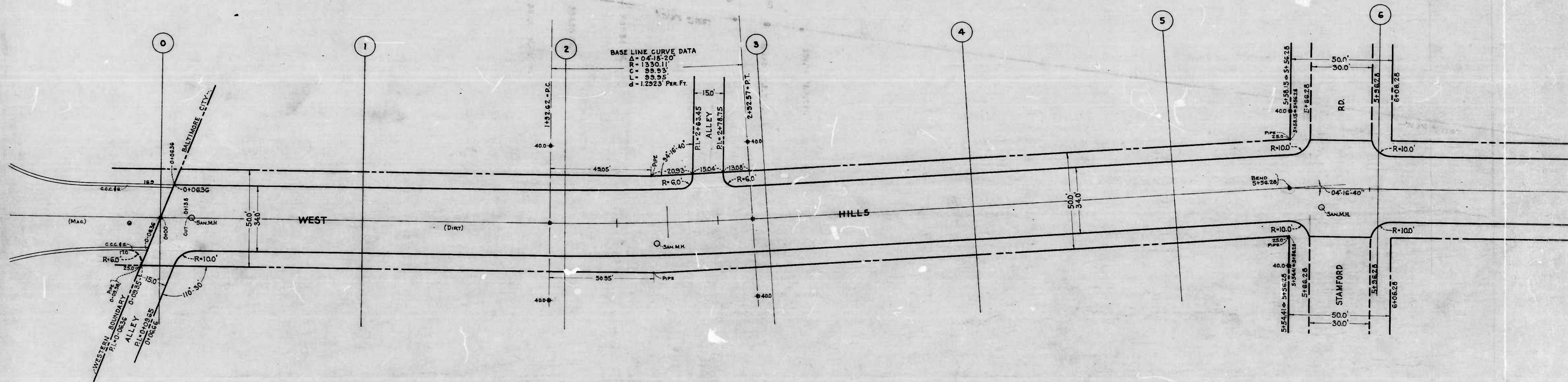
CITY OF BALTIMORE  
 DEPARTMENT OF PUBLIC WORKS  
 BUREAU OF HIGHWAYS

CONT. NO. 821  
 WEST HILLS RD.-WESTERN LINE-COOKS LA

CEM CON PAVING SEVEN (7) INCHES THICK.  
 TRINITY BUILDING & CONT. CO. CONTRACTOR.  
 STARTED - 3-15-47 COMP. - 10-15-47  
 SCALE - 1" = 20.0' DATE - 11-27-47

CONT. NO. 821 WEST HILLS RD. WESTERN BOUNDARY - COOKS LA

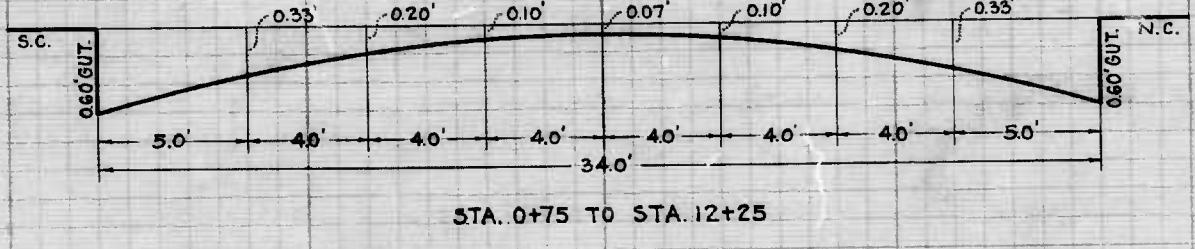
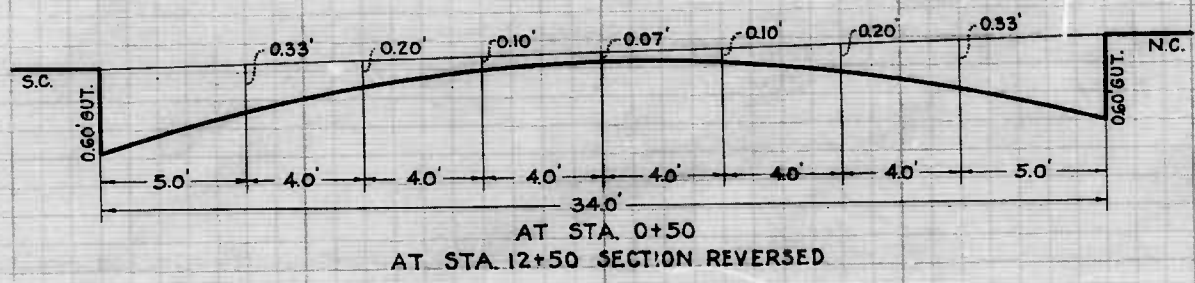
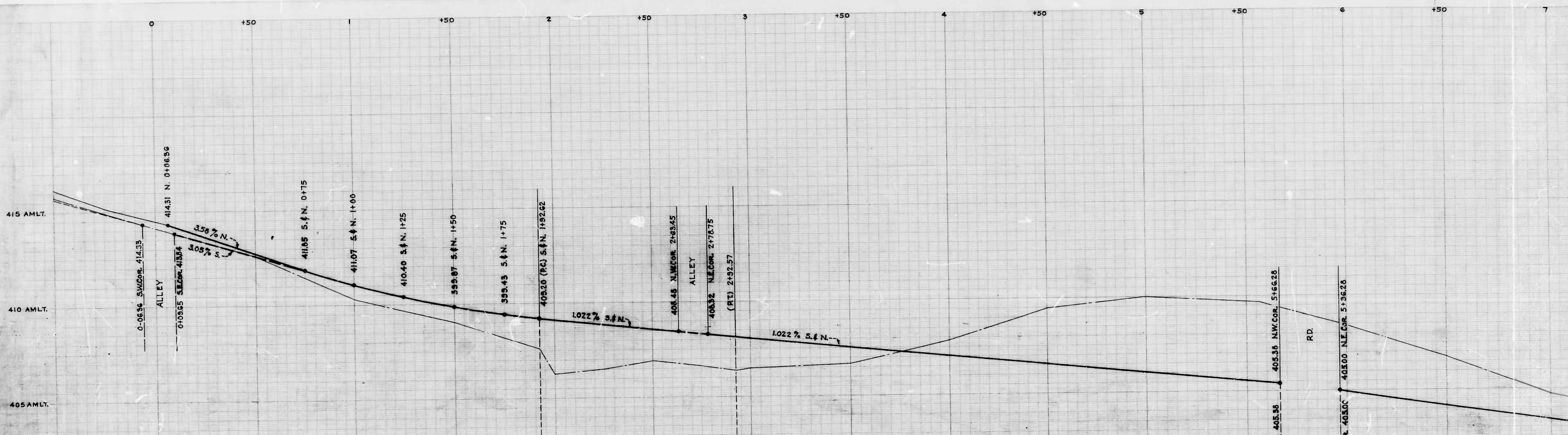




DESIGNED BY JESSE D. CARTER  
CHECKED BY S. L. Burns

①A



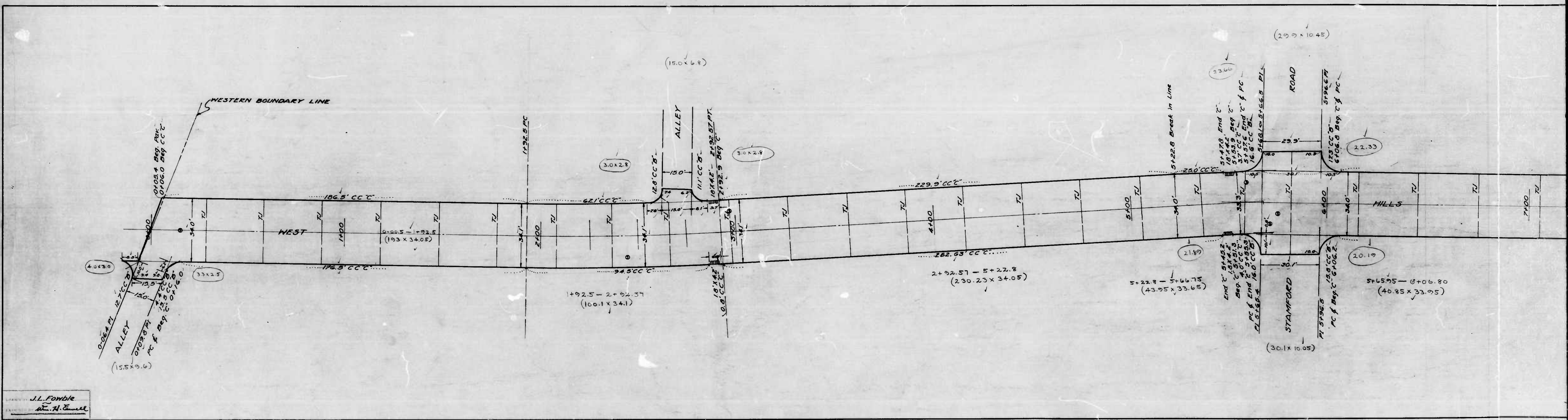


DESIGNED BY JESS D. CARTER  
 DRAWN BY S. F. CARROLL  
 CHECKED BY [Signature]  
 ENGINEER IN CHARGE OF DRAWING

NOTE:  
 T  
 O



COAST AND GEOL. SURV. MAPS - WESTERN - COASTAL TOWNS



J.L. Fowble  
 H. H. Ewell

Q2