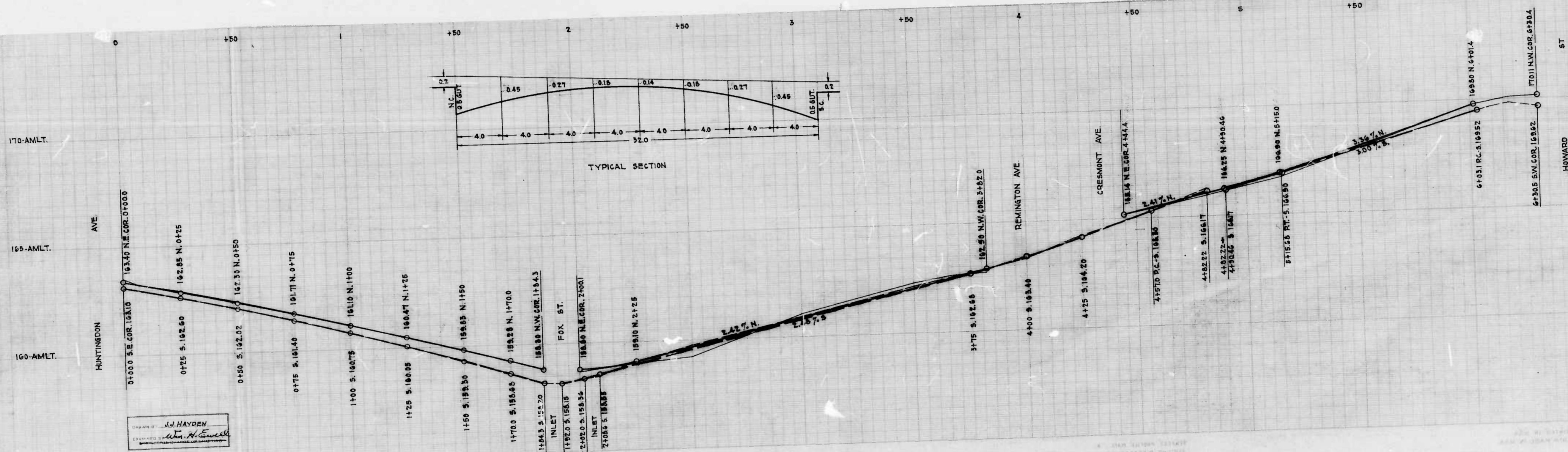


DRAWN BY: J.J. HAYDEN  
 CHECKED BY: H. GAVEL  
 ENGINEER

CITY OF BALTIMORE  
 DEPARTMENT OF PUBLIC WORKS  
 BUREAU OF STREET DESIGN  
 PLAN NO. 820  
 27TH ST. - HUNTINGDON ST.  
 CONT. NO. 4  
 SCALE: 1" = 200'  
 APPROVED: *Henry W. ...*  
 ASSOCIATE ENGINEER  
 APPROVED: *Edward D. ...*  
 ENGR. - PLANS & SURVEYS

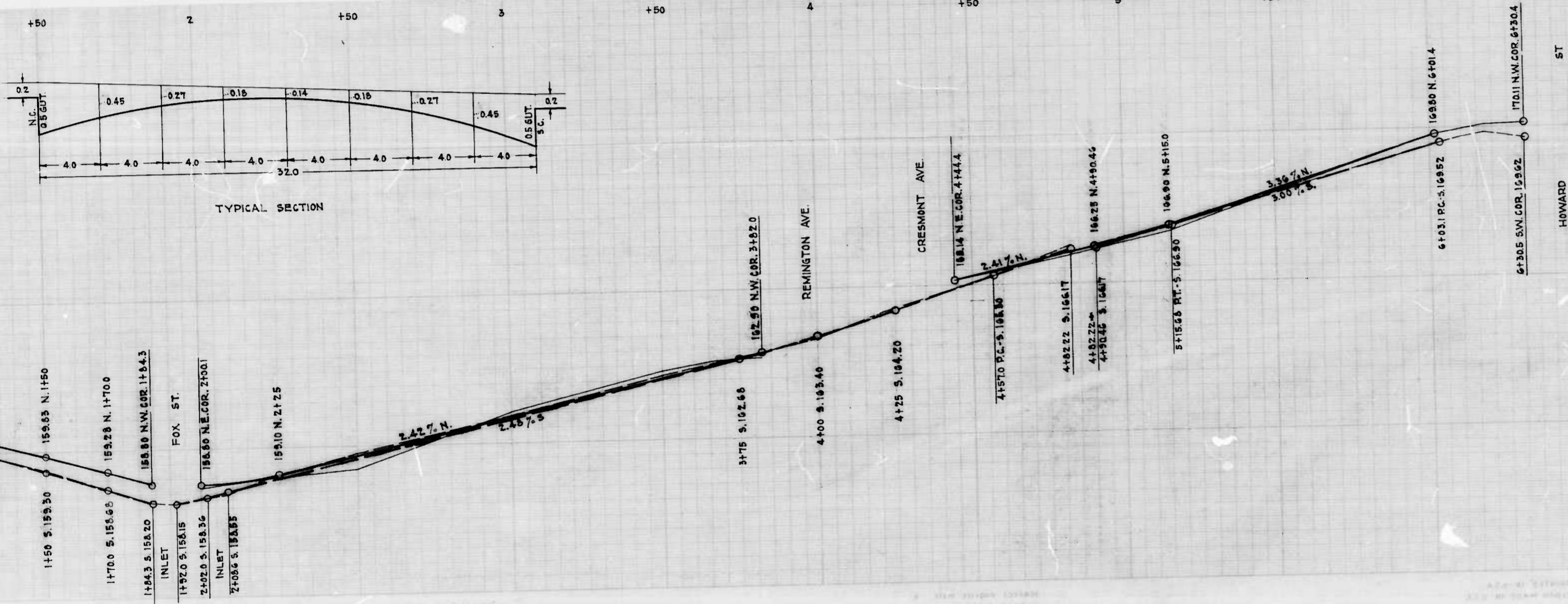


DRAWN BY J. HAYDEN  
 CHECKED BY W. H. GIBSON

CITY OF BALTIMORE  
 DEPARTMENT OF PUBLIC WORKS  
 BUREAU OF HIGHWAYS  
 PROFILE OF  
 27TH ST. HUNTINGDON AVE  
 CONTRACT NO. 820  
 HORIZ. SCALE - 1" = 50'  
 VERT. SCALE - 1" = 2'  
 APPROVED -  
Henry M. Scheraga  
 ASSOCIATE ENGINEER  
 APPROVED -  
Edward J. Scheraga  
 ENGR.-PLANNING & SURVEYS





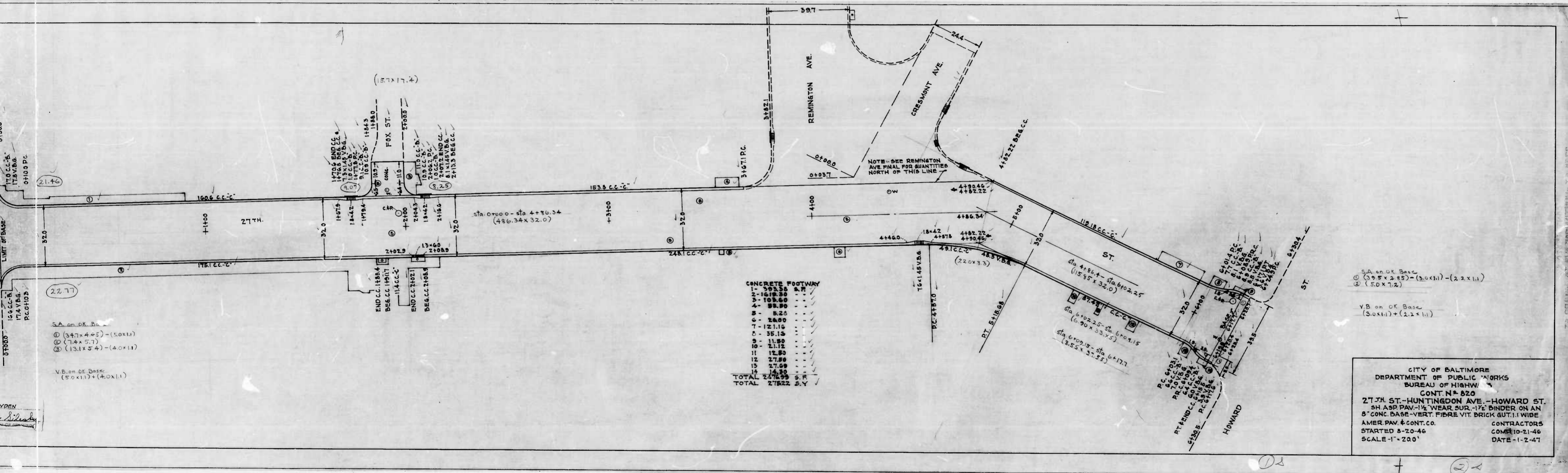


CITY OF BALTIMORE  
 DEPARTMENT OF PUBLIC WORKS  
 BUREAU OF HIGHWAYS  
 PROFILE OF  
 27TH ST. - HUNTINGDON AVE. TO HOWARD ST.  
 CONT. No. 820

SCALES - HOR. - 1" = 200'  
 VER. - 1" = 20'

BOOK No. X-216  
 AUG. 6, 1944

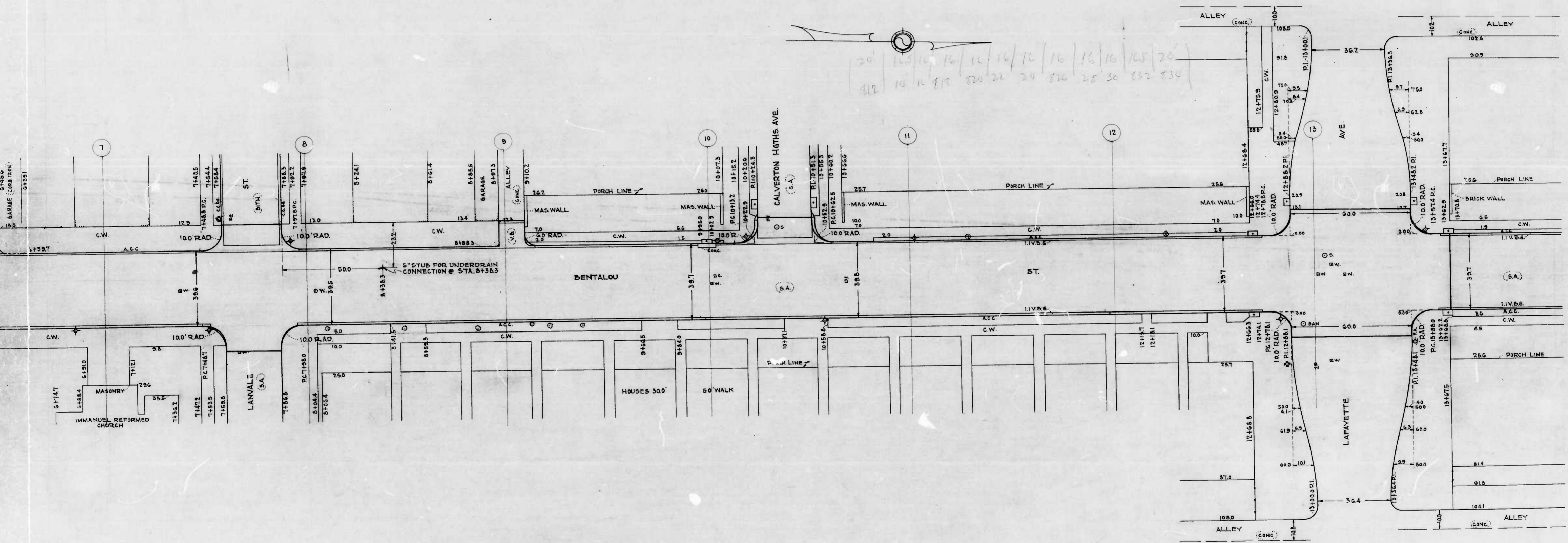
APPROVED *Henry Weiskopf* ASSOCIATE ENGINEER  
 APPROVED *Wm. H. Ziesler* HIGHWAYS ENGINEER  
 APPROVED *Edward Weiskopf* ENGR. - PLANS & SURVEYS  
 APPROVED *Frank L. Smith* CHIEF ENGINEER



CONCRETE FOOTWAY

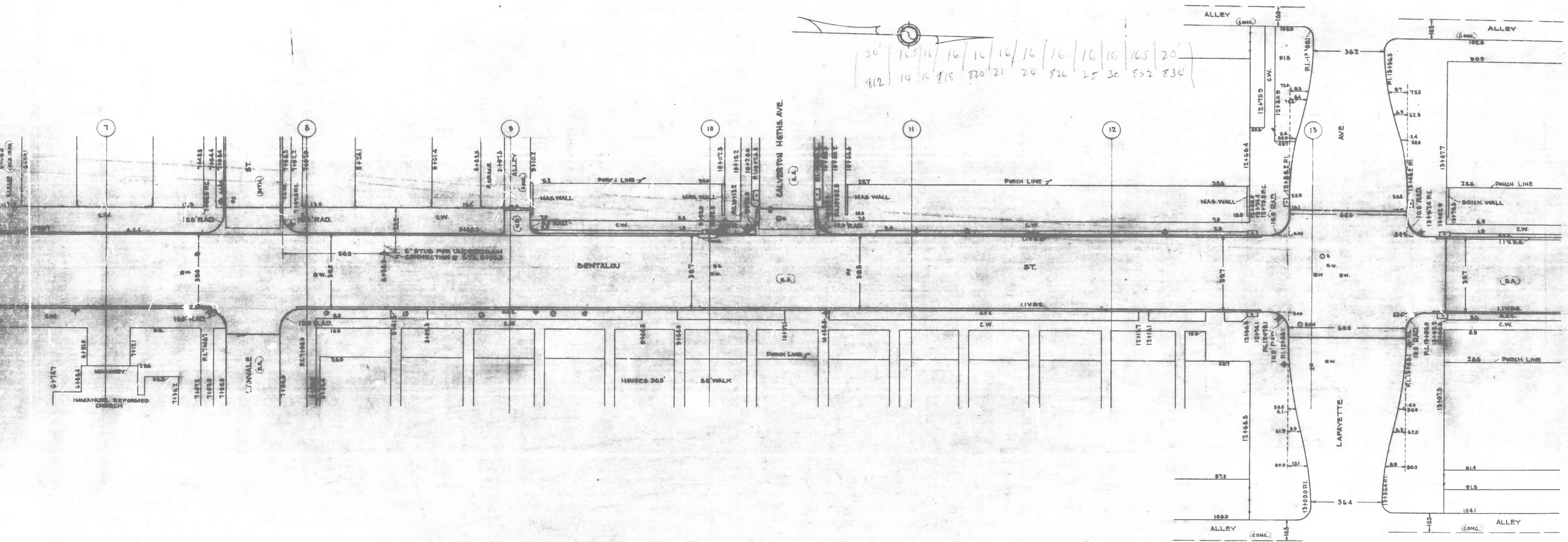
1	502.50	S.F.
2	1618.30	S.F.
3	108.60	S.F.
4	58.90	S.F.
5	8.25	S.F.
6	24.00	S.F.
7	12.16	S.F.
8	11.80	S.F.
9	8.25	S.F.
10	2.12	S.F.
11	12.50	S.F.
12	27.50	S.F.
13	27.50	S.F.
14	27.50	S.F.
15	27.50	S.F.
16	27.50	S.F.
17	27.50	S.F.
18	27.50	S.F.
19	27.50	S.F.
20	27.50	S.F.
21	27.50	S.F.
22	27.50	S.F.
23	27.50	S.F.
24	27.50	S.F.
25	27.50	S.F.
26	27.50	S.F.
27	27.50	S.F.
28	27.50	S.F.
29	27.50	S.F.
30	27.50	S.F.
31	27.50	S.F.
32	27.50	S.F.
33	27.50	S.F.
34	27.50	S.F.
35	27.50	S.F.
36	27.50	S.F.
37	27.50	S.F.
38	27.50	S.F.
39	27.50	S.F.
40	27.50	S.F.
41	27.50	S.F.
42	27.50	S.F.
43	27.50	S.F.
44	27.50	S.F.
45	27.50	S.F.
46	27.50	S.F.
47	27.50	S.F.
48	27.50	S.F.
49	27.50	S.F.
50	27.50	S.F.
51	27.50	S.F.
52	27.50	S.F.
53	27.50	S.F.
54	27.50	S.F.
55	27.50	S.F.
56	27.50	S.F.
57	27.50	S.F.
58	27.50	S.F.
59	27.50	S.F.
60	27.50	S.F.
61	27.50	S.F.
62	27.50	S.F.
63	27.50	S.F.
64	27.50	S.F.
65	27.50	S.F.
66	27.50	S.F.
67	27.50	S.F.
68	27.50	S.F.
69	27.50	S.F.
70	27.50	S.F.
71	27.50	S.F.
72	27.50	S.F.
73	27.50	S.F.
74	27.50	S.F.
75	27.50	S.F.
76	27.50	S.F.
77	27.50	S.F.
78	27.50	S.F.
79	27.50	S.F.
80	27.50	S.F.
81	27.50	S.F.
82	27.50	S.F.
83	27.50	S.F.
84	27.50	S.F.
85	27.50	S.F.
86	27.50	S.F.
87	27.50	S.F.
88	27.50	S.F.
89	27.50	S.F.
90	27.50	S.F.
91	27.50	S.F.
92	27.50	S.F.
93	27.50	S.F.
94	27.50	S.F.
95	27.50	S.F.
96	27.50	S.F.
97	27.50	S.F.
98	27.50	S.F.
99	27.50	S.F.
100	27.50	S.F.
TOTAL	27522	S.F.

CITY OF BALTIMORE  
 DEPARTMENT OF PUBLIC WORKS  
 BUREAU OF HIGHWAYS  
 CONT. N° 820  
 27th ST - HUNTINGDON AVE - HOWARD ST.  
 SH. ASP. PAV. - 1/2" WEAR SUR. - 1/2" BINDER ON AN  
 8" CONC. BASE - VERT. FIBRE VIT. BRICK GUT. 11" WIDE  
 AMER. PAV. & CONT. CO. CONTRACTORS  
 STARTED 5-20-46 COMPLETED 2-1-47  
 SCALE - 1" = 200' DATE - 1-2-47



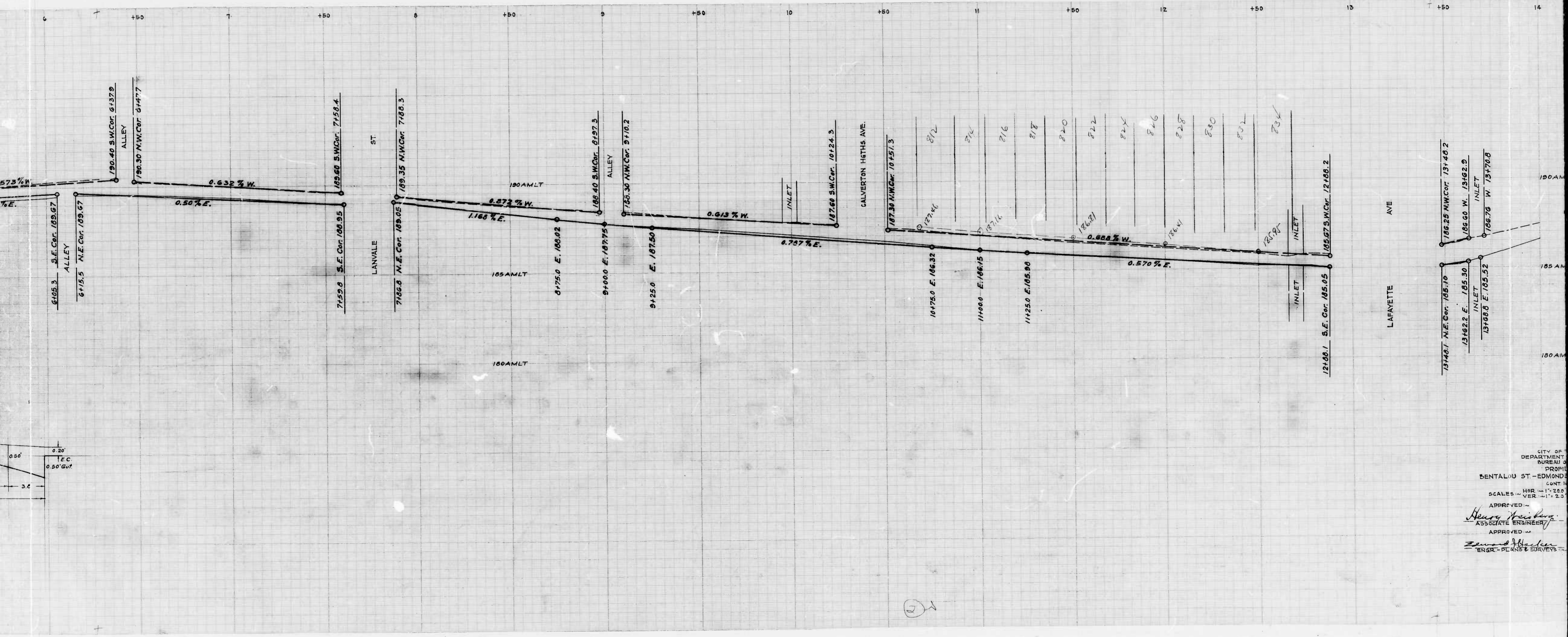
BEN  
 5  
 ASS  
 ENG

20 | 16.5 | 16 | 16 | 16 | 16 | 16 | 16 | 16 | 16.5 | 20  
912 | 14 | 14 | 14 | 22 | 24 | 26 | 25 | 30 | 252 | 234

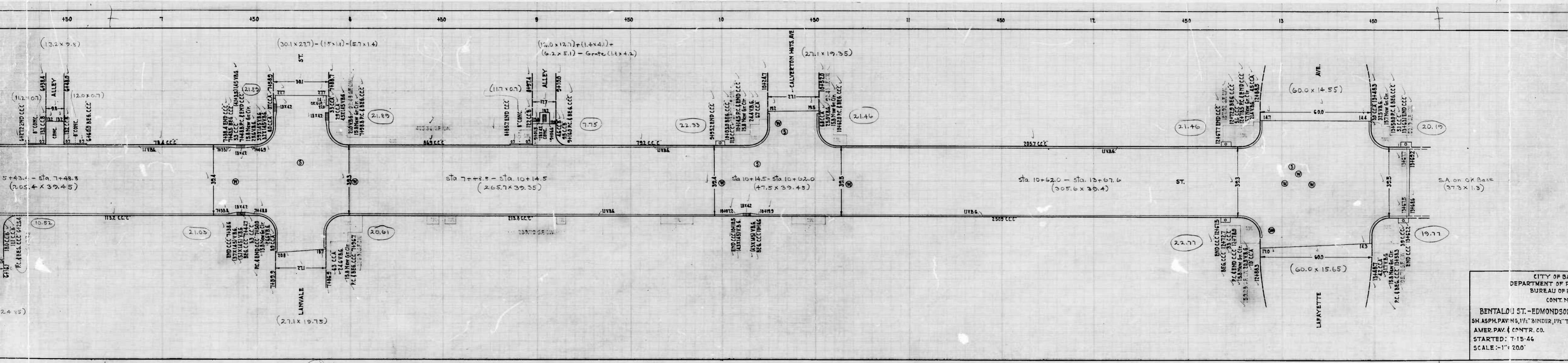


2x

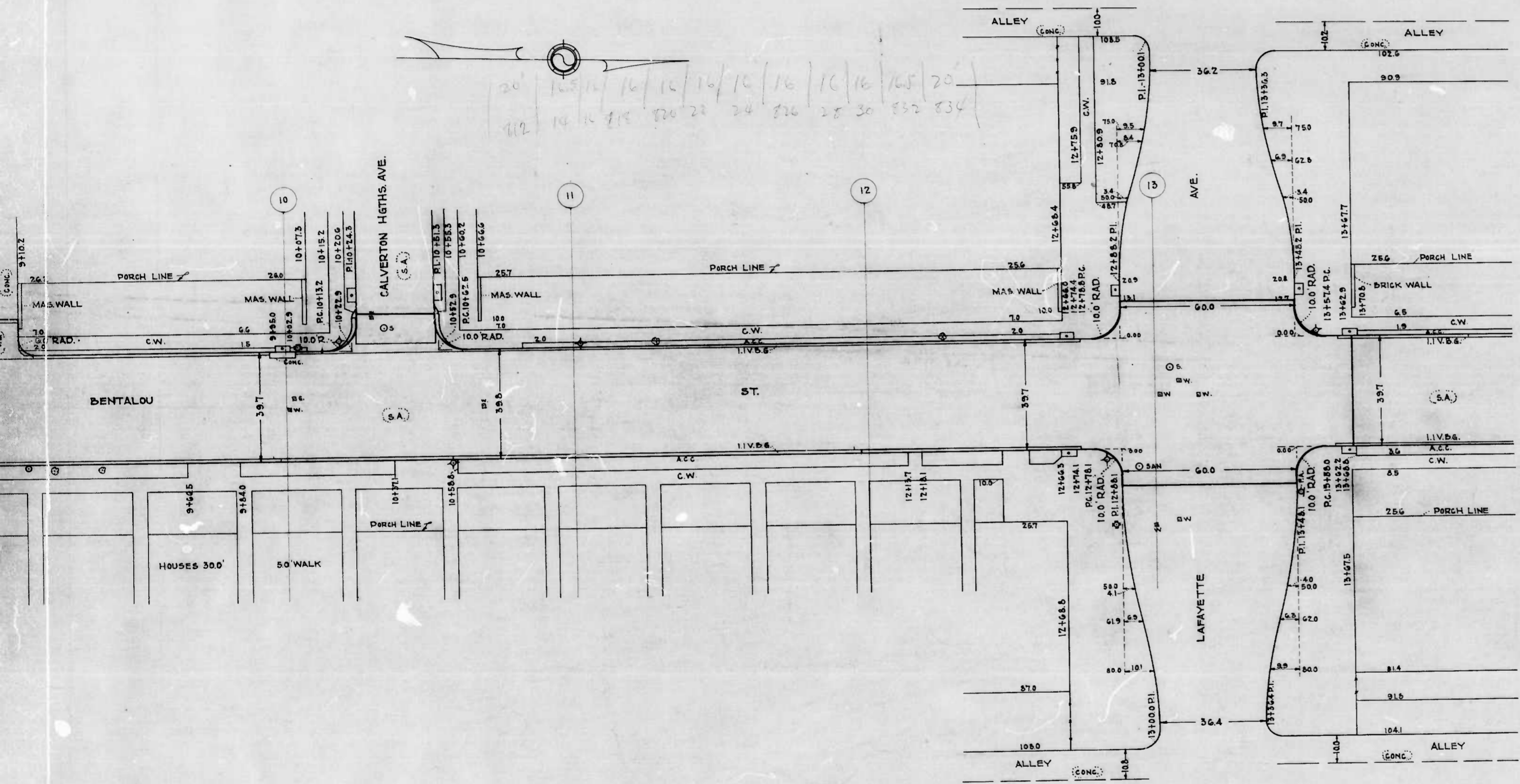




CITY OF  
 DEPARTMENT  
 BUREAU OF  
 PUBLIC  
 UTILITIES  
 BENTLEY ST. - EDMOND  
 CONT. IN  
 SCALES - HOR - 1" = 200'  
 VER - 1" = 20'  
 APPROVED -  
*Henry H. King*  
 ASSOCIATE ENGINEER  
 APPROVED -  
*Edward H. Hester*  
 ENGR. - PLANS & SURVEYS



CITY OF BAL  
 DEPARTMENT OF PL  
 BUREAU OF PL  
 CONT. NO.  
 BENTALL ST. - EDMONDSON  
 SH. ASPH. PAVING, 1 1/2" BINDER, 1 1/2" TO  
 AMER. PAV. & CONTR. CO.  
 STARTED: 7-15-46  
 SCALE: 1" = 200'

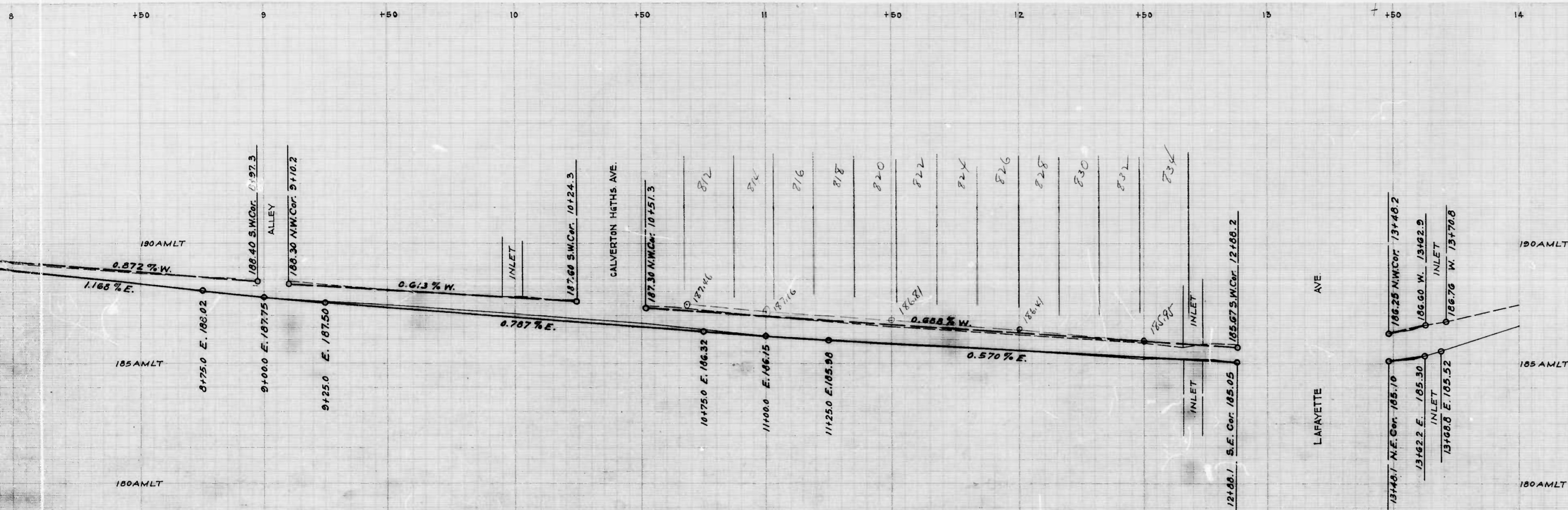


CITY OF BALTIMORE  
 DEPARTMENT OF PUBLIC WORKS  
 BUREAU OF HIGHWAYS  
 PLAN OF  
 DENTALOU ST. - EDMONDSON AVE. TO LAFAYETTE AVE.  
 CNT. N. 820

SCALE - 1" = 200'      BOOK N-X-219  
 JULY 16 1946

APPROVED - *Henry Weaker* ASSOCIATE ENGINEER  
 APPROVED - *W. J. Fisher* HIGHWAYS ENGINEER  
 APPROVED - *James J. MacLean* ENGR. PLANS & SURVEYS  
 APPROVED - *Mark S. Smith* CHIEF ENGINEER

(3)



CITY OF BALTIMORE  
 DEPARTMENT OF PUBLIC WORKS  
 BUREAU OF HIGHWAYS  
 PROFILE OF  
 DENTALOU ST. - EDMONDSON AVE. TO LAFAYETTE AVE.  
 CONT. N<sup>o</sup> 820

SCALES: HOR. 1" = 200'  
 VER. 1" = 20'

APPROVED: *Henry Weisberg*  
 ASSOCIATE ENGINEER

APPROVED: *Wm. T. Fisher*  
 HIGHWAYS ENGINEER

APPROVED: *Samuel H. Hecker*  
 ENGR. - PLANS & SURVEYS

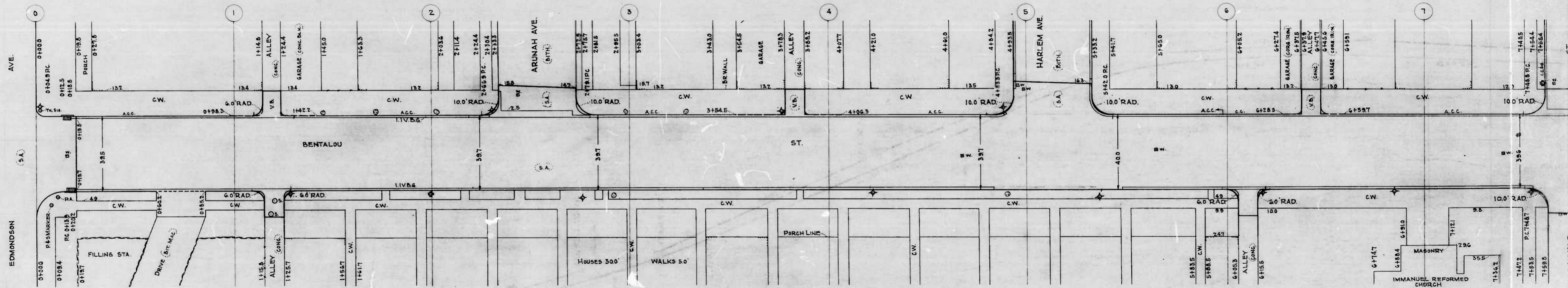
APPROVED: *Walter H. ...*  
 CHIEF ENGINEER

BOOK N<sup>o</sup> X-219  
 JULY 16, 1946

Q

Q

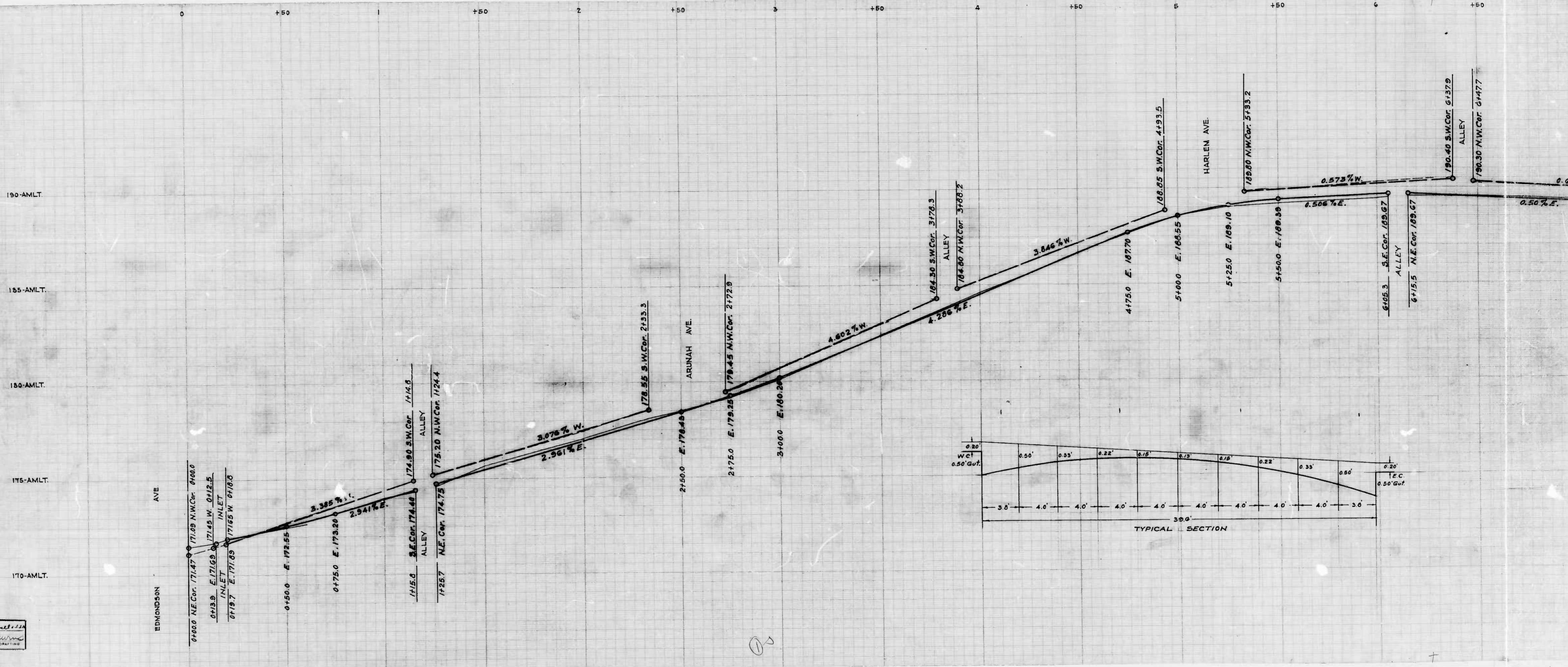




DESIGNED BY J.J. HAYDEN  
 DRAWN BY S. J. [Signature]  
 FOR THE BOARD OF HEALTH

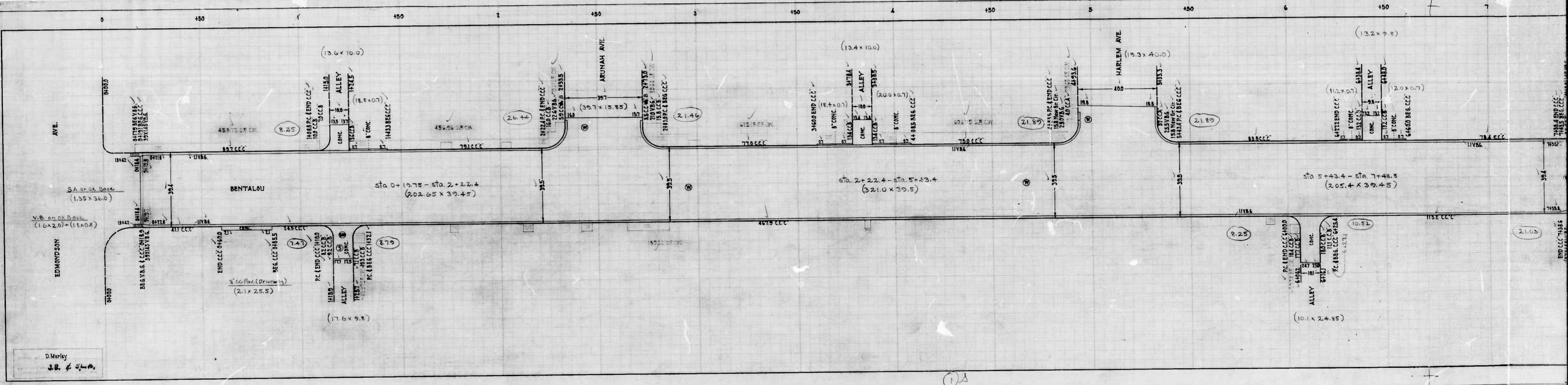
Os



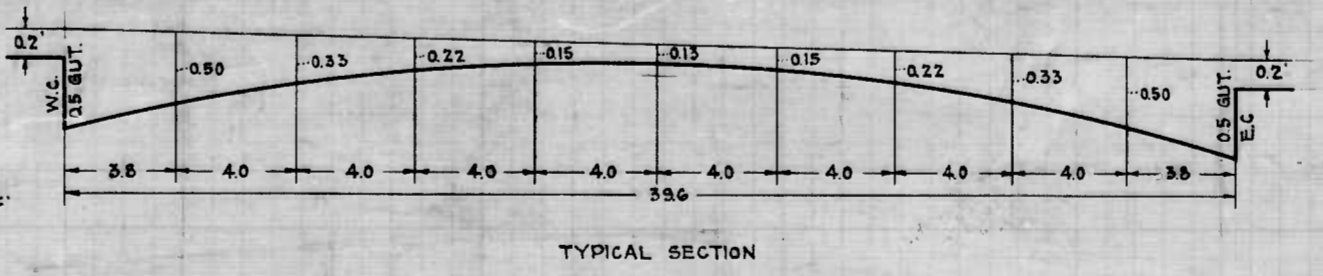
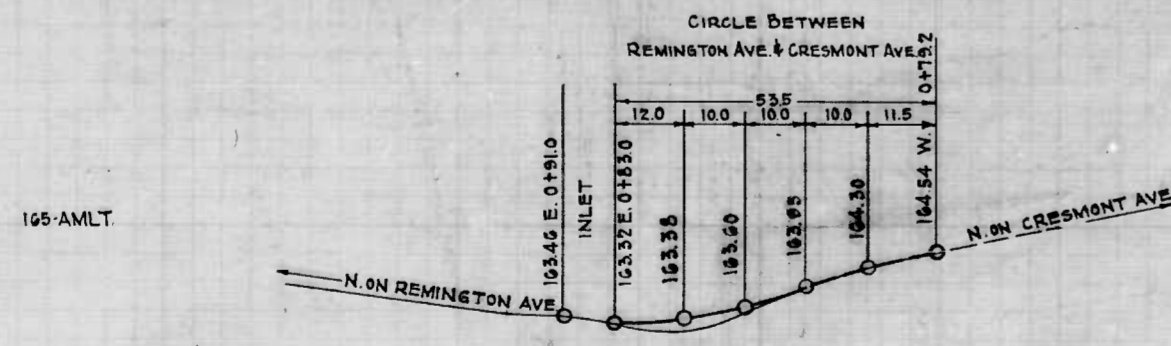
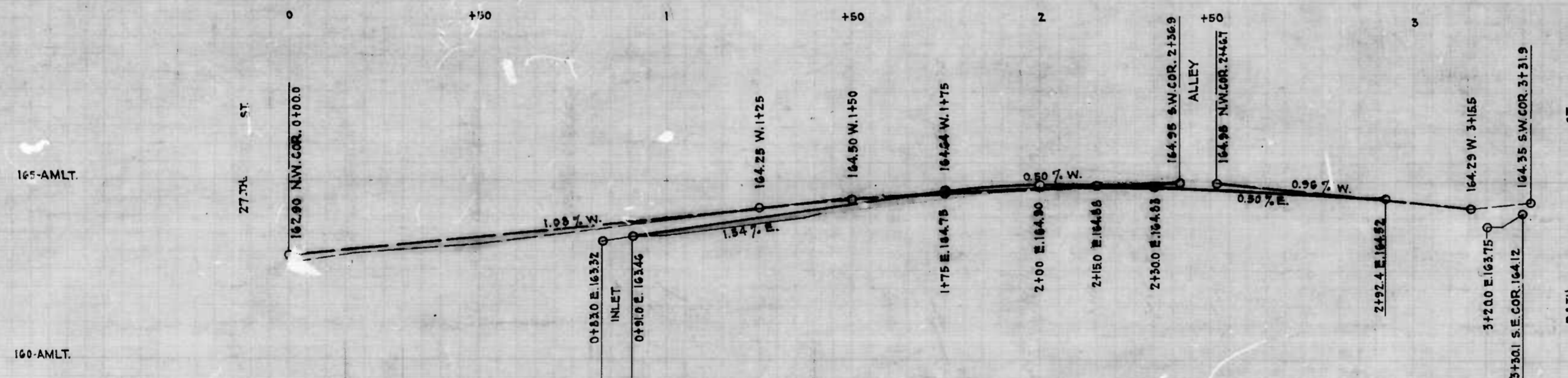
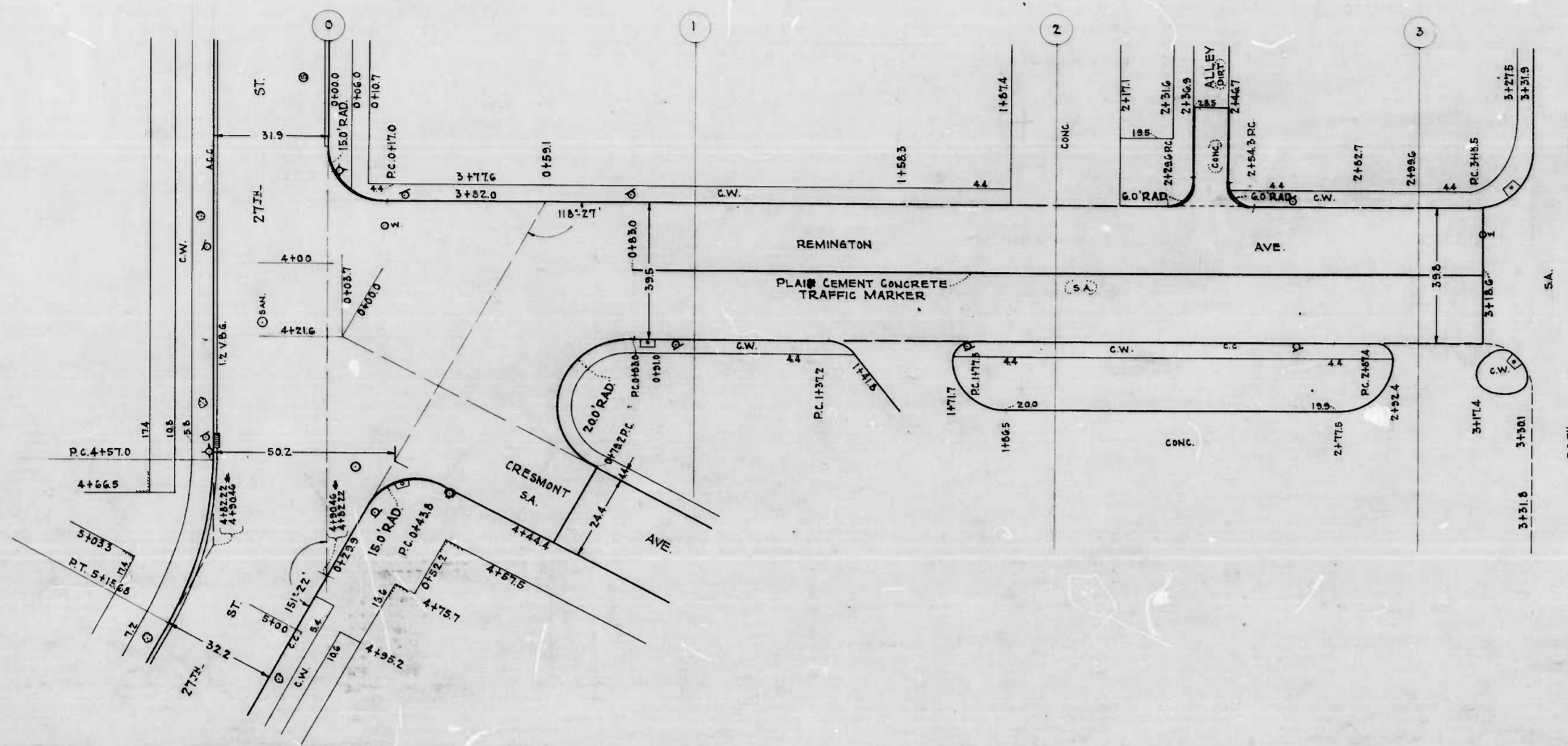


DRAWN BY *R. H. [Signature]*  
 EXAMINED BY *S. B. [Signature]*  
 ENGINEER IN CHARGE OF DRAFTING





10A



CITY OF BALTIMORE  
 DEPARTMENT OF PUBLIC WORKS  
 BUREAU OF HIGHWAYS  
 PLAN & PROFILE  
 REMINGTON AVE. - 27TH ST. TO 29TH ST.  
 CONT. N-820  
 PLAN 1"=120' BOOK N-820  
 SCALES PROFILE 1"=20' AUG. 6, 1946  
 APPROVED: *Henry Wasker* ASSOCIATE ENGINEER  
 APPROVED: *W. J. Fisher* HIGHWAYS ENGINEER  
 APPROVED: *Edward J. ...* ENGR. - PLANS & SURVEYS  
 APPROVED: *...* CHIEF ENGINEER

DRAWN BY *J. J. HAYDEN*  
 CHECKED BY *...*

160-AMLT.

8-25

8-26

