

NOTE - THE ISSUANCE OF THIS PLAN DOES NOT COMMIT THE CITY TO THE ACCEPTANCE AND/OR IMPROVEMENT OF ANY THROUGHFARE SHOWN THEREON.

CITY OF BALTIMORE
 DEPARTMENT OF PUBLIC WORKS
 BUREAU OF HIGHWAYS
 PLAN OF
 CHAPEL GATE LANE - 1300' ± E - BRIARCLIFT RD. TO LINDSAY RD.
 CONT. N.E. 818

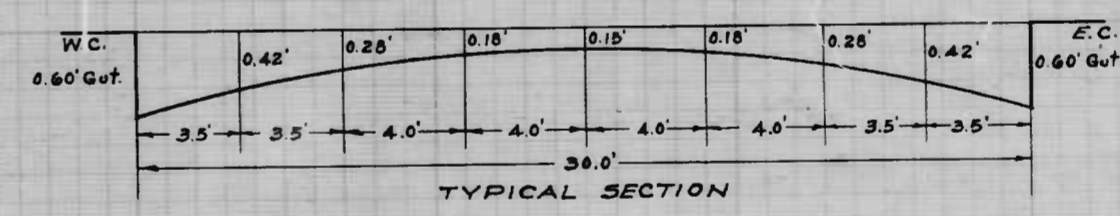
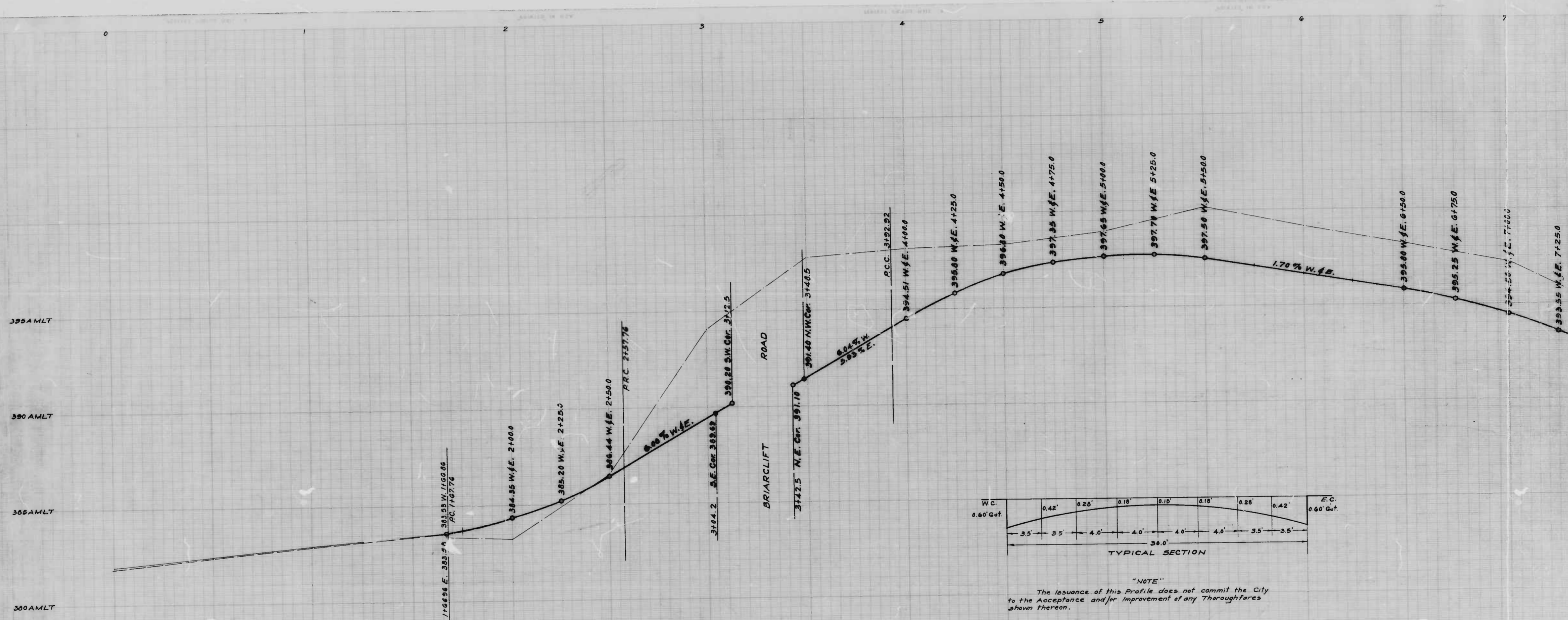
SCALE - 1" = 400'
 APPROVED - *Henry Weisberg*
 ASSOCIATE ENGINEER

BOOK N.E. X 218
 MAY 14, 1946
 APPROVED - *Walter L. Smith*
 HIGHWAYS ENGINEER

APPROVED - *Edward Hedderley*
 ENGR. PLANS & SURVEYS

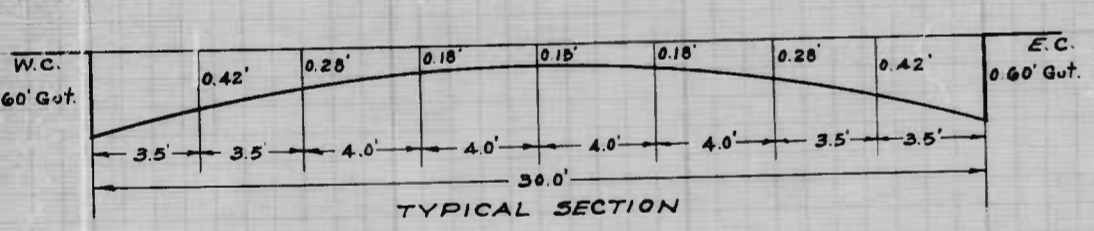
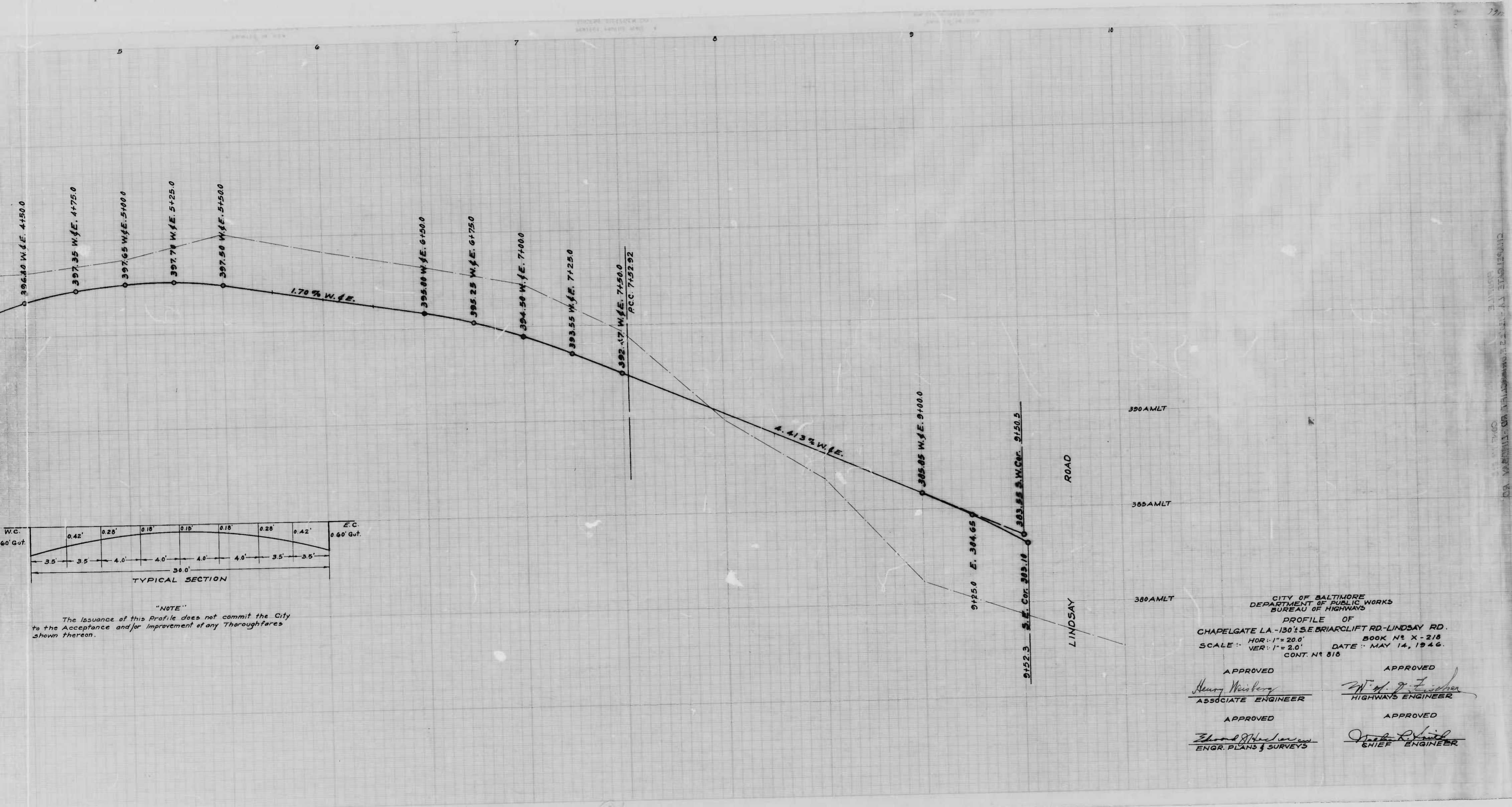
APPROVED - *Walter L. Smith*
 CHIEF ENGINEER

J. J. HAYDEN



"NOTE"
The issuance of this Profile does not commit the City to the Acceptance and/or Improvement of any Thoroughfares shown thereon.

W. H. Cavell
S. L. Curran



"NOTE"
 The issuance of this Profile does not commit the City to the Acceptance and/or Improvement of any Thoroughfares shown thereon.

CITY OF BALTIMORE
 DEPARTMENT OF PUBLIC WORKS
 BUREAU OF HIGHWAYS
 PROFILE OF
 CHAPELGATE LA - 130+ S.E. BRIARCLIFT RD - LINDSAY RD.
 BOOK No. X-218
 SCALE: HOR: 1" = 20.0' VER: 1" = 2.0' DATE: MAY 14, 1946.
 CONT. No. 818

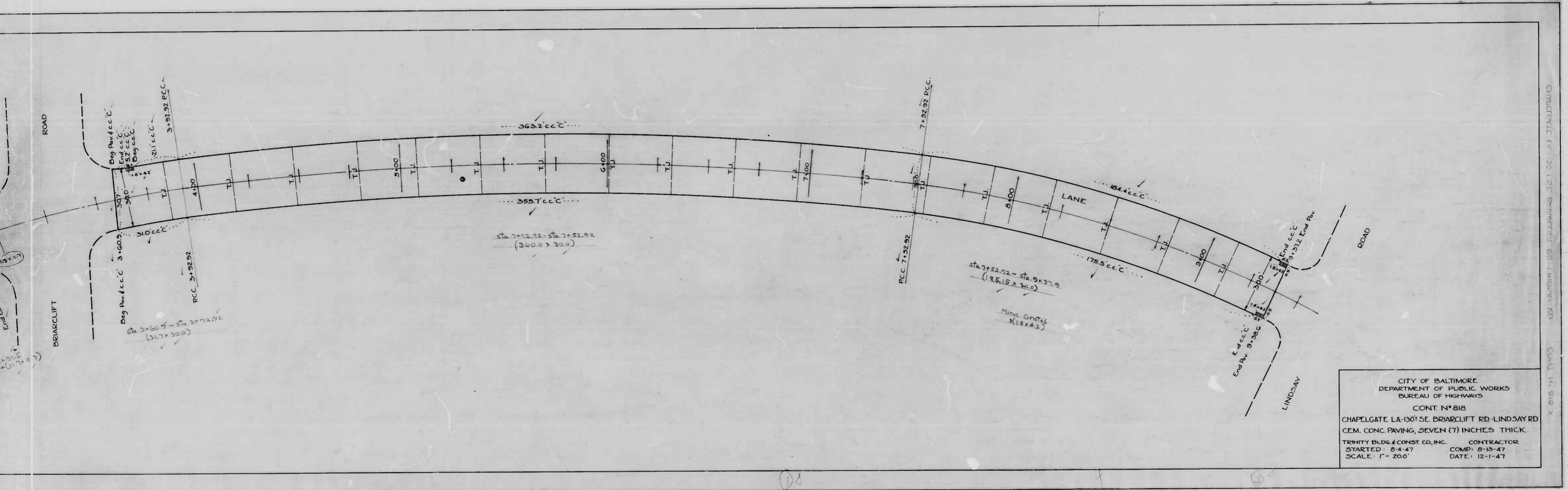
APPROVED
Henry Weisberg
 ASSOCIATE ENGINEER

APPROVED
W. H. Fisher
 HIGHWAYS ENGINEER

APPROVED
Edward J. H. ...
 ENGR. PLANS & SURVEYS

APPROVED
...
 CHIEF ENGINEER

BALTIMORE CITY ENGINEERING DEPARTMENT
 CHAPELGATE LA - 130+ S.E. BRIARCLIFT RD - LINDSAY RD.
 CONT. No. 818



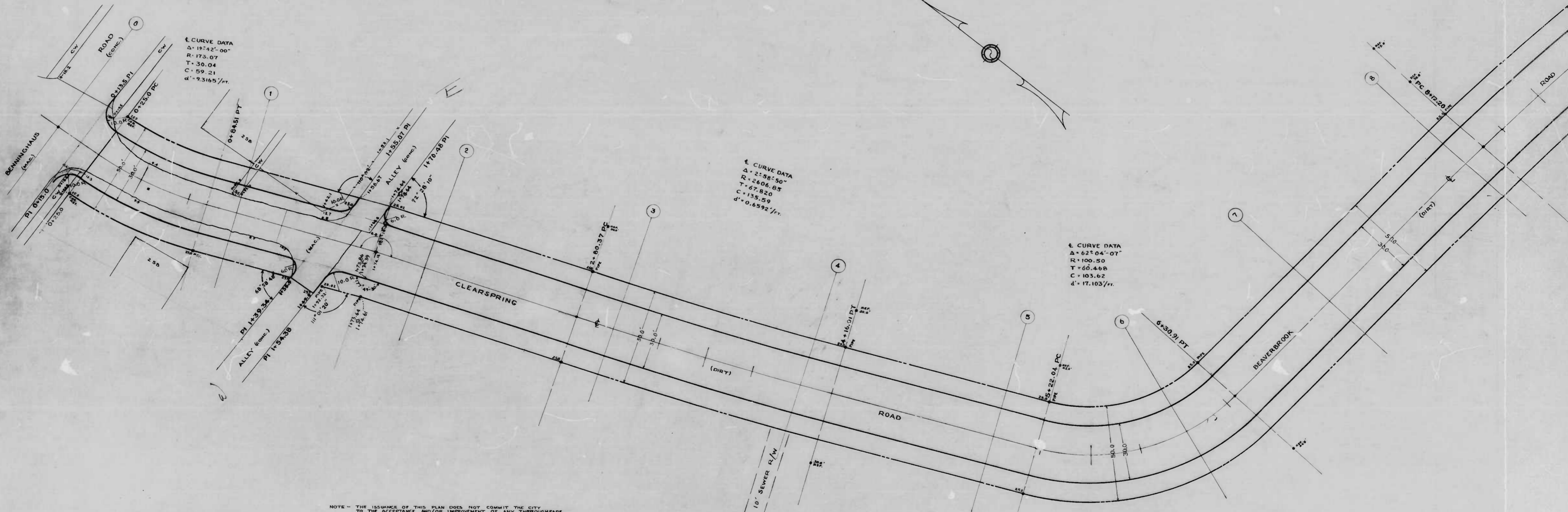
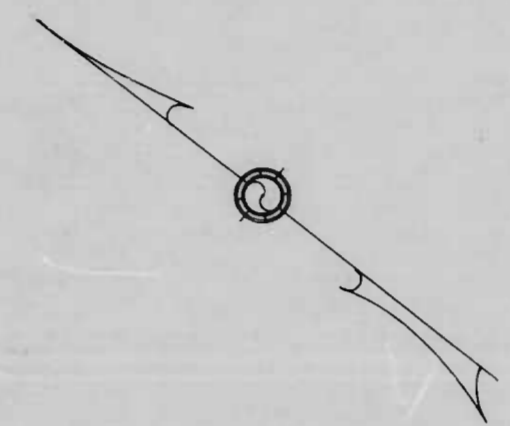
CITY OF BALTIMORE
 DEPARTMENT OF PUBLIC WORKS
 BUREAU OF HIGHWAYS

CONT. N° 818

CHAPELGATE LA-130° SE. BRIARCLIFT RD-LINDSAY RD
 CEM. CONC. PAVING, SEVEN (7) INCHES THICK.

TRINITY BLDG. & CONST. CO., INC. CONTRACTOR
 STARTED: 8-4-47 COMP: 8-13-47
 SCALE: 1" = 200' DATE: 12-1-47

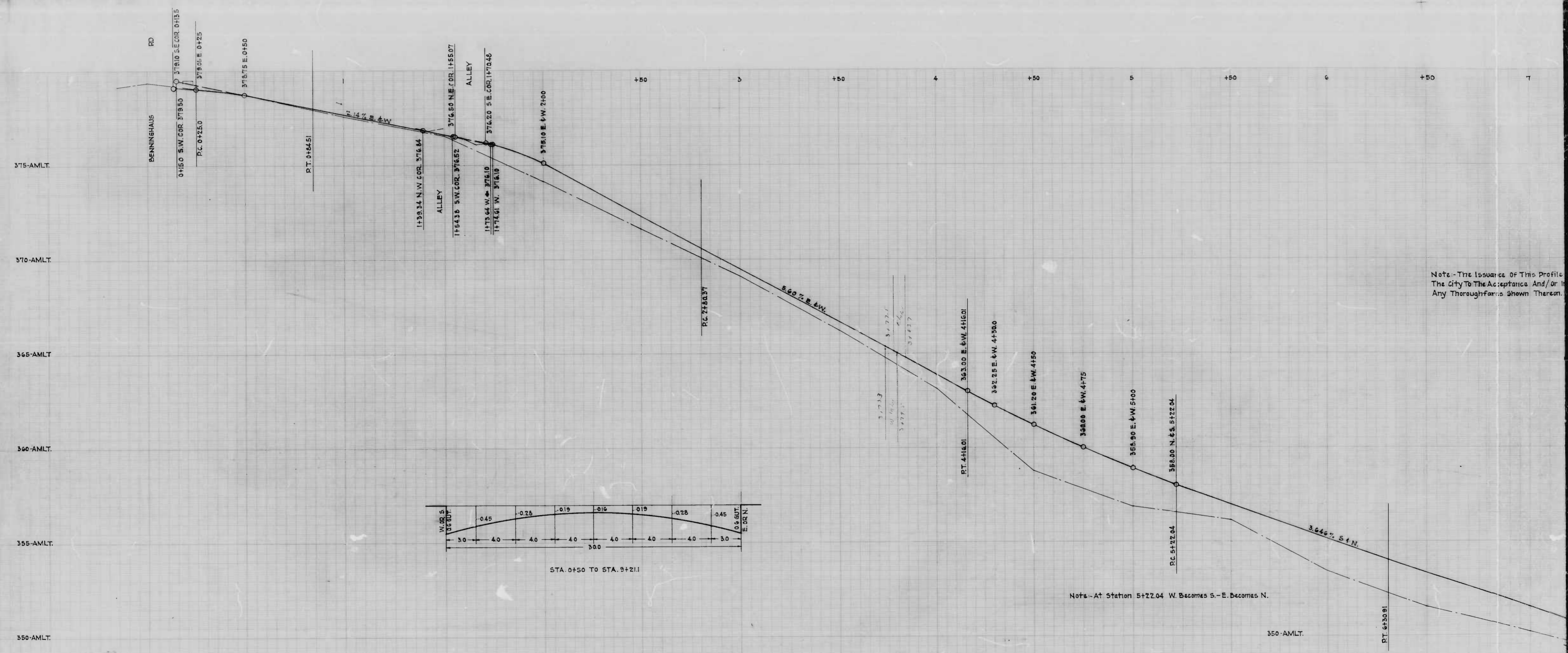
CHAPELGATE LA-130° SE. BRIARCLIFT RD-LINDSAY RD CONT. N° 818 X 11.818



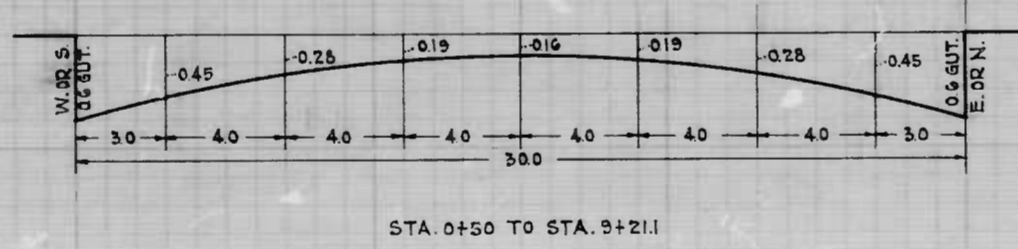
NOTE - THE ISSUANCE OF THIS PLAN DOES NOT COMMIT THE CITY TO THE ACCEPTANCE AND/OR IMPROVEMENT OF ANY THROUGHFARE SHOWN THEREON.

E.D. Keller
 S. F. ...

104

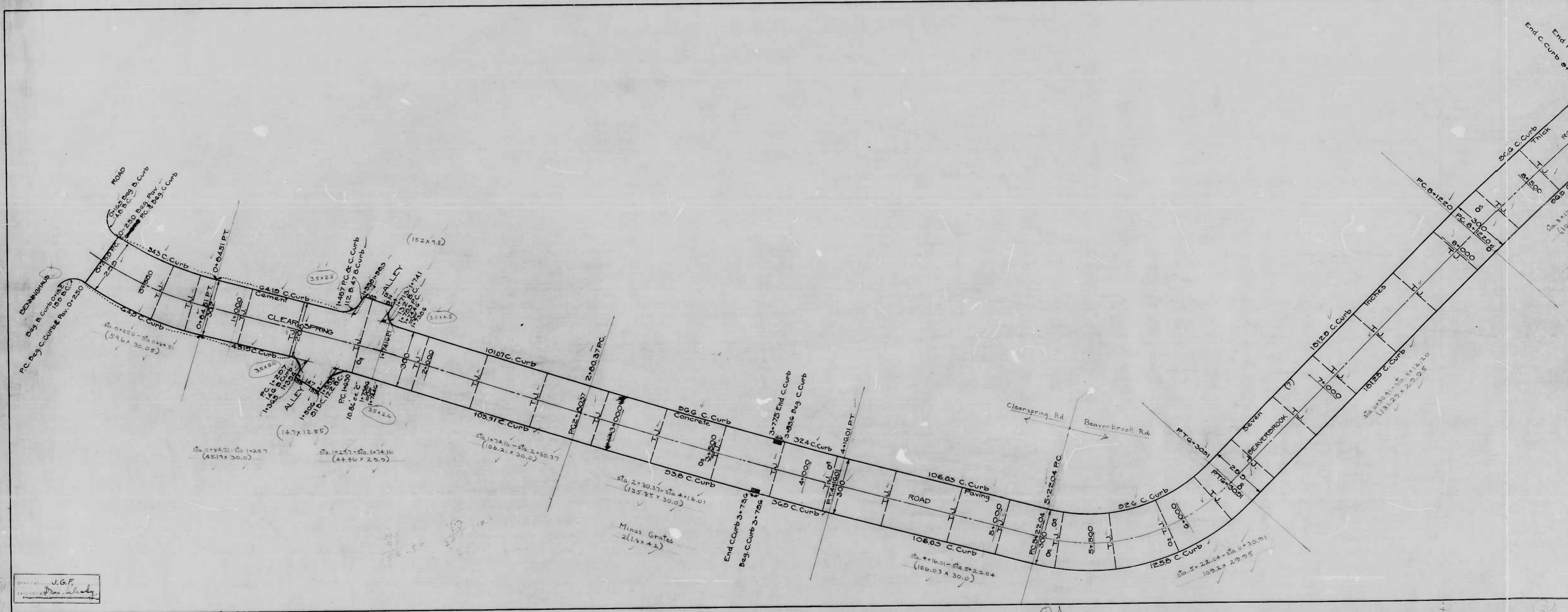


Note:-The Issuance Of This Profile
The City To The Acceptance And/Or
Any Thoroughfare Shown Thereon.

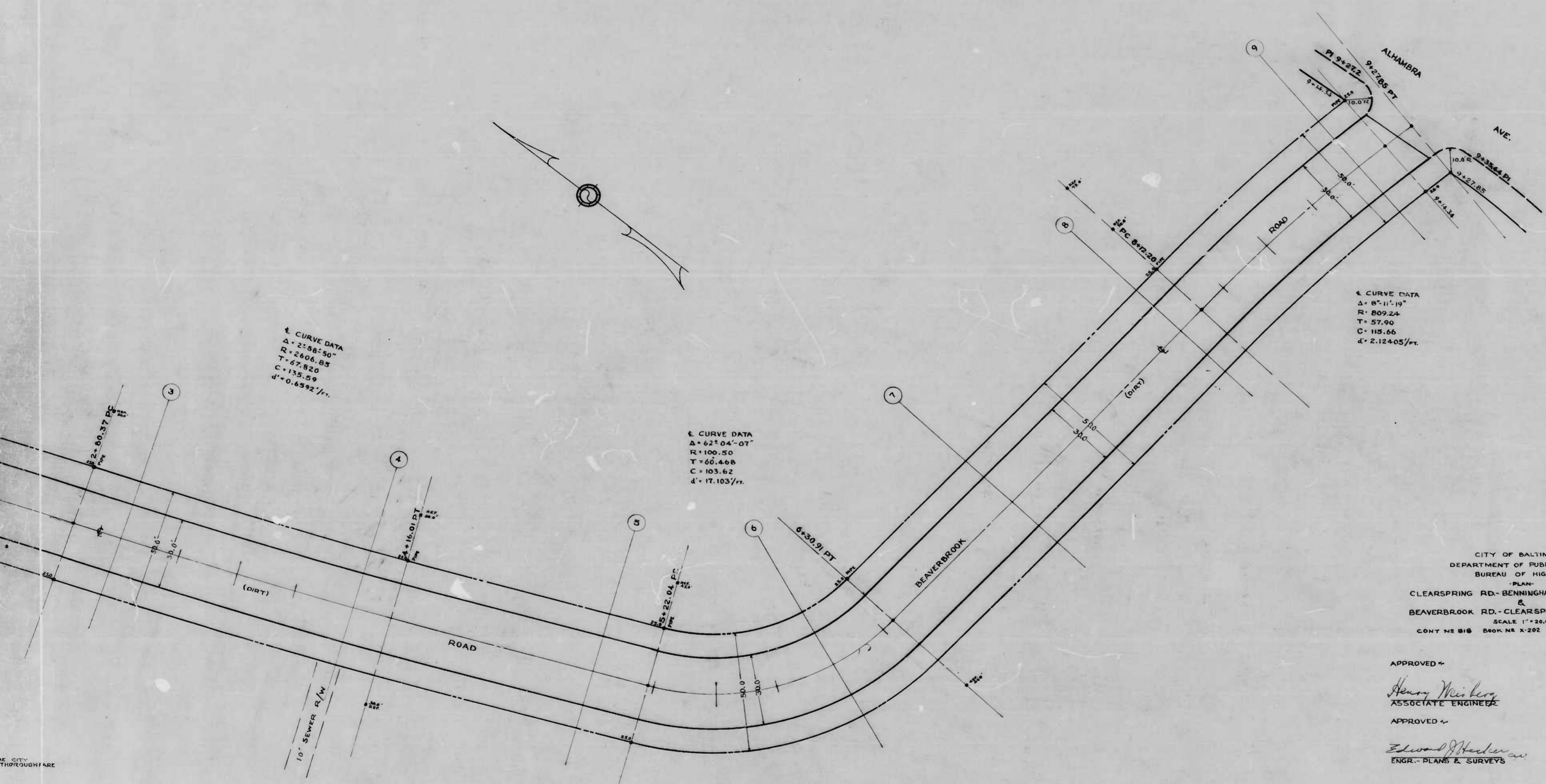


DRAWN BY J. J. HAYDEN
 CHECKED BY S. J. (Sumner)
 ENGINEER IN CHARGE OF DRAFTING

00



DRAWN BY: J.G.F.
 DRAWN BY: Dra. Liberty
 CHECKED BY: [Signature]
 DATE: [Date]



E CURVE DATA
 $\Delta = 25^{\circ}58'50''$
 $R = 2406.85$
 $T = 47.820$
 $C = 135.59$
 $d = 0.6592/ft.$

E CURVE DATA
 $\Delta = 62^{\circ}04'07''$
 $R = 100.50$
 $T = 60.468$
 $C = 103.62$
 $d = 17.103/ft.$

E CURVE DATA
 $\Delta = 8^{\circ}11'19''$
 $R = 809.24$
 $T = 57.90$
 $C = 115.66$
 $d = 2.12405/ft.$

CITY OF BALTIMORE
 DEPARTMENT OF PUBLIC WORKS
 BUREAU OF HIGHWAYS
 PLAN
 CLEARSRING RD - BENNINGHAUS RD - BEAVERBROOK RD.
 &
 BEAVERBROOK RD - CLEARSRING RD - ALHAMBRA AVE.
 SCALE 1" = 20.0'
 CONT NS 818 BOOK NS X-202 DATE MARCH 15, 1946

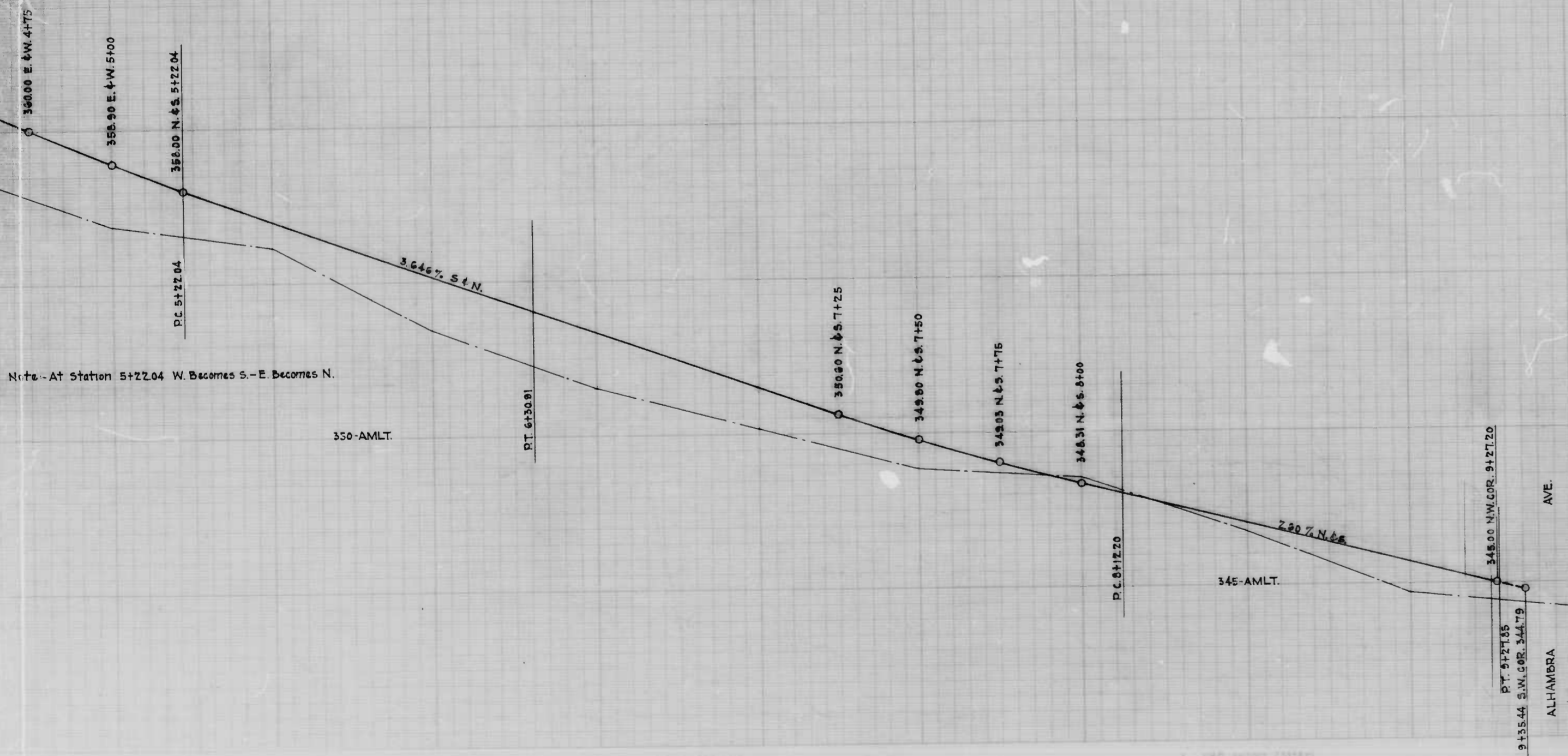
APPROVED ~
Henry Weiberg
 ASSOCIATE ENGINEER
 APPROVED ~
Edward J. Hecker
 ENGR. - PLANS & SURVEYS

APPROVED ~
W. J. Z. ...
 HIGHWAYS ENGINEER
 APPROVED ~
John ...
 CHIEF ENGINEER

1

2

Note - The issuance of this profile does not commit the City to the acceptance and/or improvement of any thoroughfares shown thereon.



Note - At Station 5+22.04 W. Becomes S. - E. Becomes N.

CITY OF BALTIMORE
 DEPARTMENT OF PUBLIC WORKS
 BUREAU OF HIGHWAYS
 PROFILE OF
 CLEARSPRING RD. - BENNINGHAUS RD. TO BEAVERBROOK RD.
 BEAVERBROOK RD. - CLEARSPRING RD. TO ALHAMBRA AVE.
 CONT. NO. 818

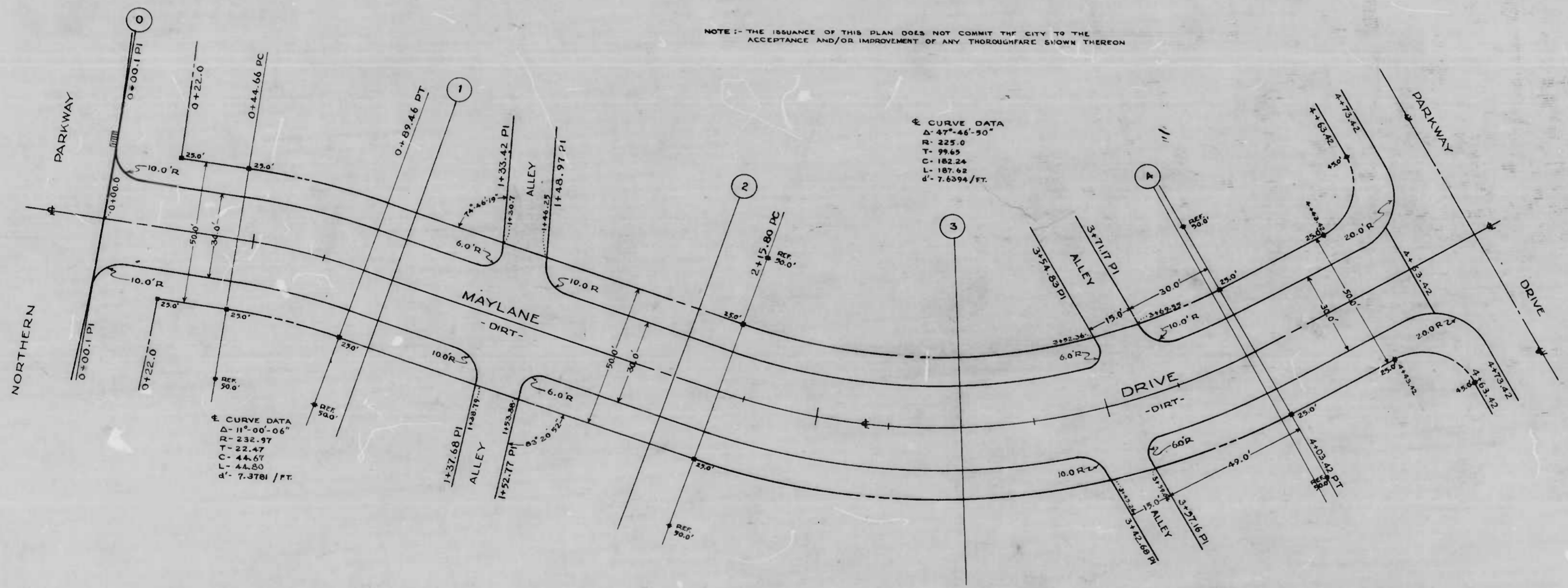
SCALE: - HOR. 1" = 200'
 - VER. 1" = 20'

BOOK NO. X-202
 JUNE 4, 1946

APPROVED: *Henry Weisberg* ASSOCIATE ENGINEER
 APPROVED: *W. H. P. Fisher* HIGHWAYS ENGINEER
 APPROVED: *Edward J. Hadden* ENGR. PLANS & SURVEYS
 APPROVED: *John L. ...* CHIEF ENGINEER

THIS DRAWING IS THE PROPERTY OF THE CITY OF BALTIMORE AND IS NOT TO BE REPRODUCED OR COPIED IN ANY MANNER WITHOUT THE WRITTEN PERMISSION OF THE CITY ENGINEER.

NOTE: - THE ISSUANCE OF THIS PLAN DOES NOT COMMIT THE CITY TO THE ACCEPTANCE AND/OR IMPROVEMENT OF ANY THROUGHFARE SHOWN THEREON



CURVE DATA
 Δ - 11°-00'-06"
 R - 232.97
 T - 22.47
 C - 44.07
 L - 44.80
 d' - 7.3781 / FT.

CURVE DATA
 Δ - 47°-45'-30"
 R - 225.0
 T - 99.65
 C - 182.24
 L - 187.62
 d' - 7.6394 / FT.

CITY OF BALTIMORE
 DEPARTMENT OF PUBLIC WORKS
 BUREAU OF HIGHWAYS
 - PLAN -
 MAYLANE DR. - NORTHERN PKWY. - PARKWAY DR.
 SCALE 1" = 20.0'
 BOOK N° X-217
 CONT. N° 818
 APRIL 12, 1946

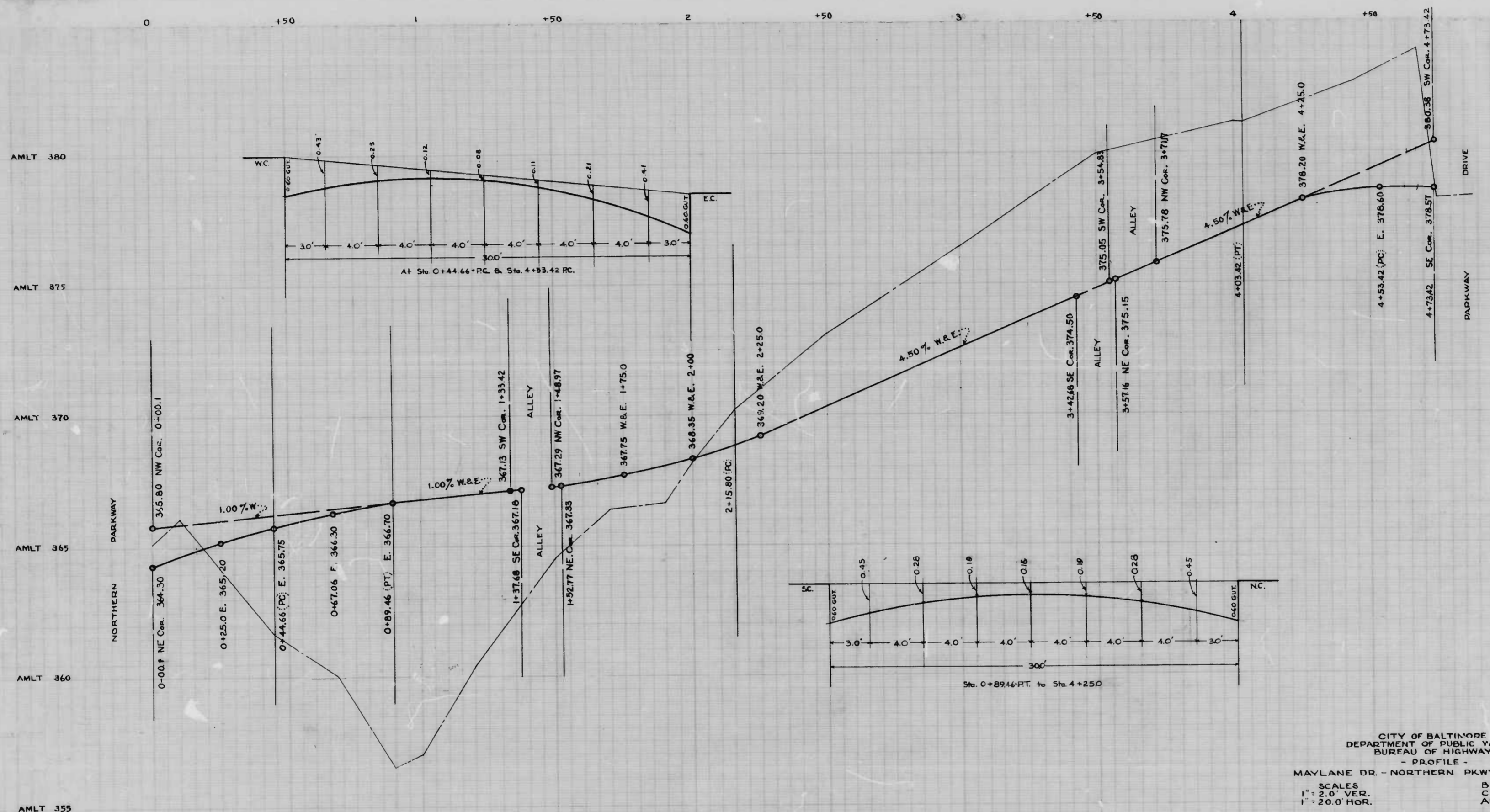
APPROVED -
Henry Wisberg
 ASSOCIATE ENGINEER
 APPROVED -

APPROVED -
W. J. Fisher
 HIGHWAYS ENGINEER
 APPROVED -

Edward J. Medley
 ENGR. PLANS & SURVEYS

Walter R. Lisk
 CHIEF ENGINEER

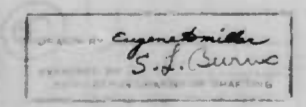
DRAWN BY *E.D. Miller*
 CHECKED BY *D.A. Burns*
 ENGINEER

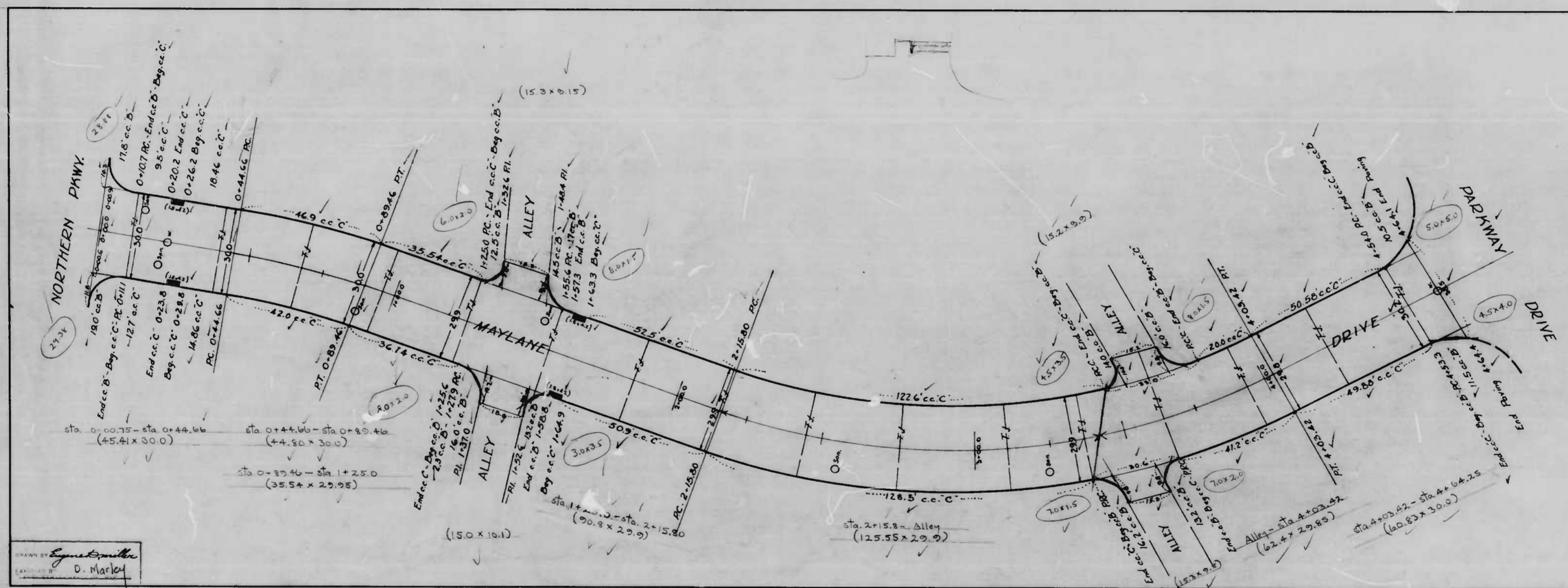


NOTE: THE ISSUANCE OF THIS PROFILE DOES NOT COMMIT THE CITY TO THE ACCEPTANCE AND/OR IMPROVEMENT OF ANY THROUGHFARE SHOWN THEREON.

CITY OF BALTIMORE
 DEPARTMENT OF PUBLIC WORKS
 BUREAU OF HIGHWAYS
 - PROFILE -
 MAYLANE DR. - NORTHERN PKWY. - PARKWAY DR.
 SCALES: BOOK NO. X-217
 1" = 2.0' VER. CONT. NO. 818
 1" = 20.0' HOR. APRIL 12, 1946

APPROVED: *Henry Weston* ASSOCIATE ENGINEER
 APPROVED: *W. J. P. Fisher* HIGHWAYS ENGINEER
 APPROVED: *Edward Weston* ENGR. - PLANS & SURVEYS
 APPROVED: *Frank B. Smith* CHIEF ENGINEER



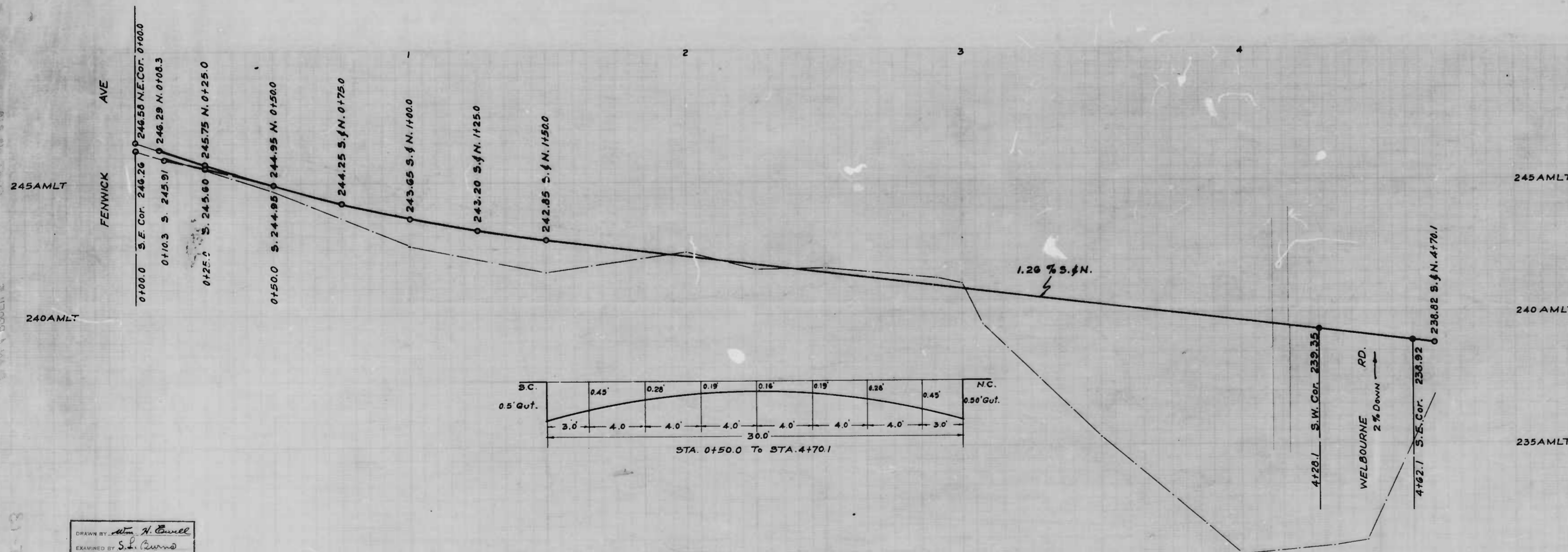
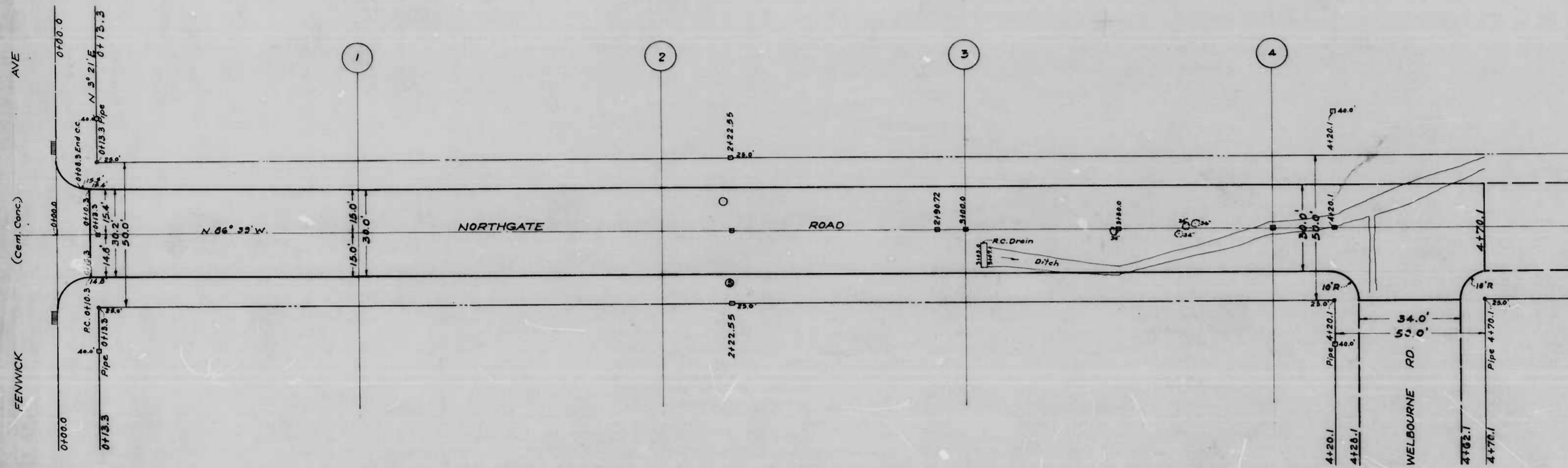


Drawn by *Spencer Smith*
 D. Markel

CITY OF BALTIMORE
 DEPARTMENT OF PUBLIC WORKS
 BUREAU OF HIGHWAYS
 CONT 818
 MAYLANE DR. - NORTHERN PKWY - PARKWAY DRIVE
 TO BE CEMENT CONCRETE PAVING (7) SEVEN INCHES THICK
 TRINITY BLDG. & CONSTR. CO., INC. CONTRACTOR
 STARTED: 6/27/47 COMPLETED: 6/3/47
 Scale: 1"=20' November 26, 1947

CONV. 95-X MAYLANE DRIVE - NORTHERN PKWY - PARKWAY DRIVE

CONV. 95-X MAYLANE DRIVE - NORTHERN PKWY - PARKWAY DRIVE



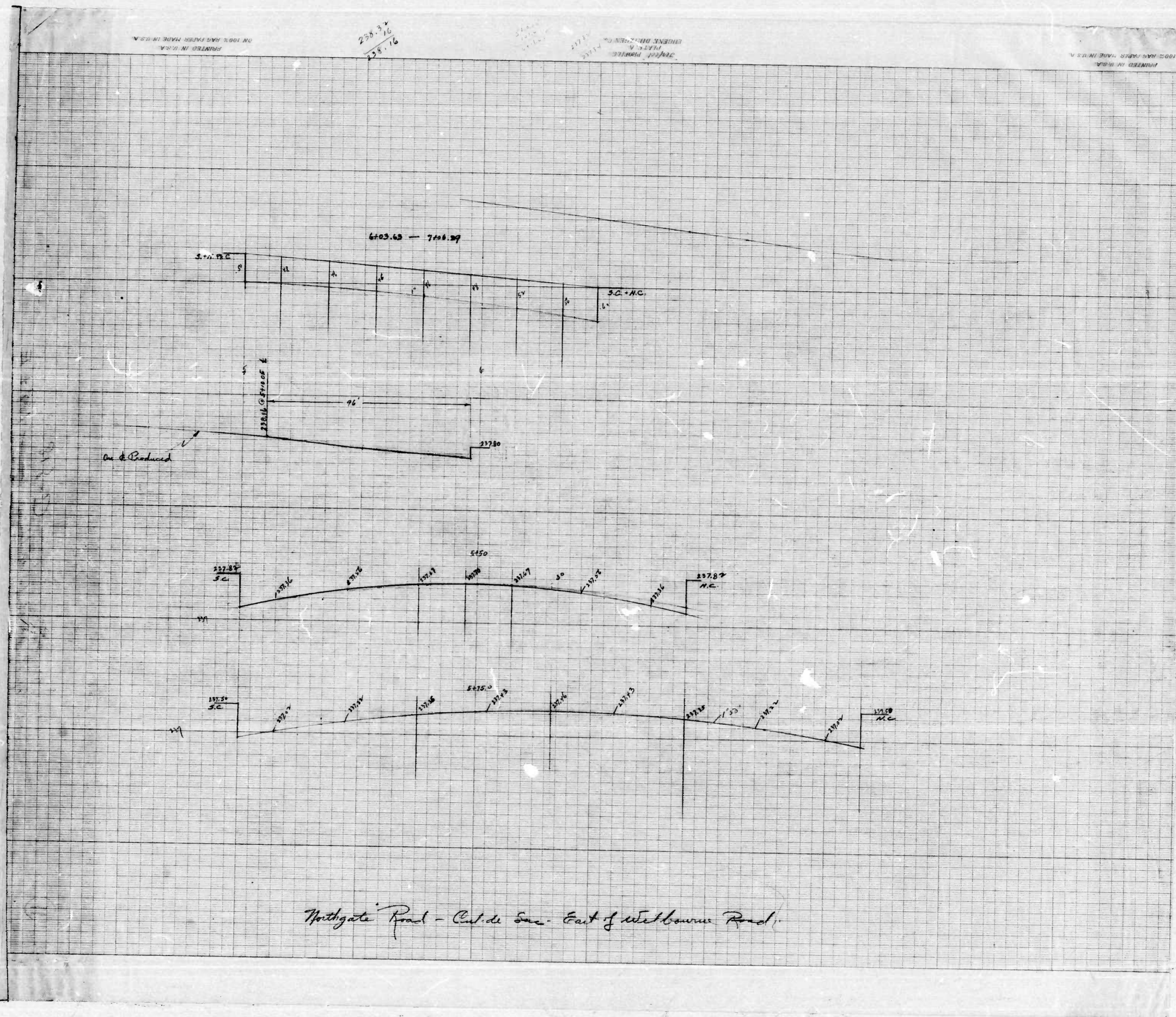
NOTE
The issuance of this Plan & Profile does not commit the City to the acceptance and/or improvement of any thoroughfares shown hereon

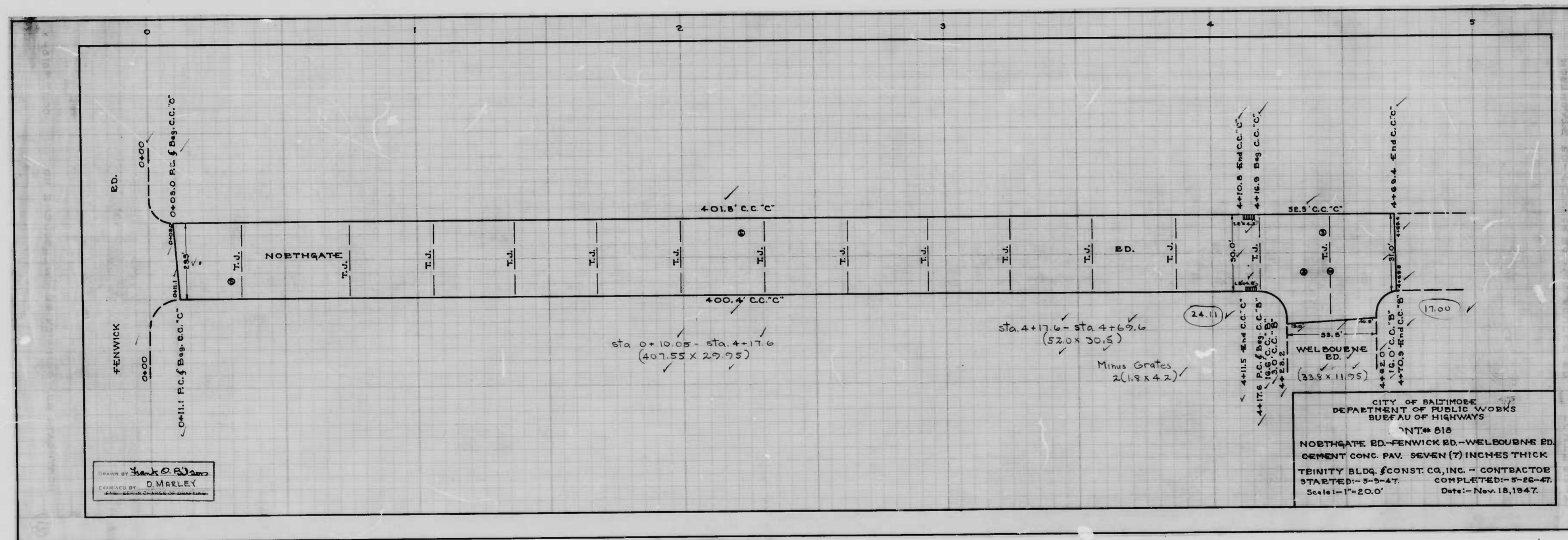
CITY OF BALTIMORE
DEPARTMENT OF PUBLIC WORKS
BUREAU OF HIGHWAYS
PLAN & PROFILE
NORTHGATE RD - FENWICK AVE - WELBOURNE ROAD
PLAN: 1" = 20.0'
SCALE: HOR: 1" = 20.0' BOOK NO MISC. 65
VER: 1" = 2.0' DATE: MAY 31, 1946
CONT. NO 818

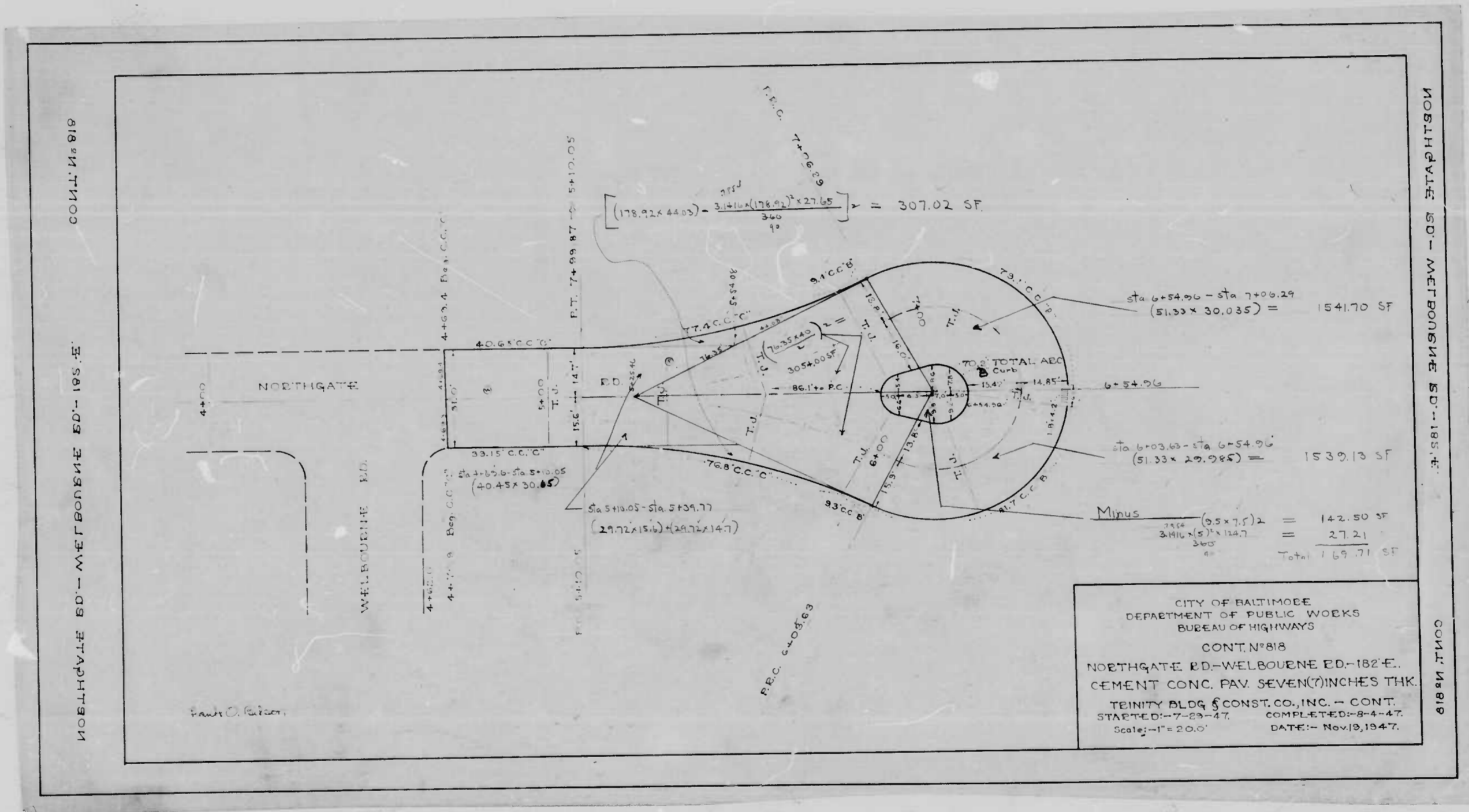
APPROVED
Henry Weisberg
ASSOCIATE ENGINEER
APPROVED
Edward Heister
ENGR. PLANS & SURVEYS

APPROVED
W. H. Fisher
HIGHWAYS ENGINEER
APPROVED
John L. Smith
CHIEF ENGINEER

DRAWN BY: *W. H. Fisher*
EXAMINED BY: *S. L. Brown*
ENGINEER IN CHARGE OF CITY PLANS







$102.66 \times 30 = 3079.80$
 $(76.75 \times 20 \times 2) = 3054.00$
 $(29.72) \times 15 \times 2 = 891.60$
 $(178.92 \times 4.03) - \frac{3146 \times (71.92) \times 27.65}{360} = 307.02$

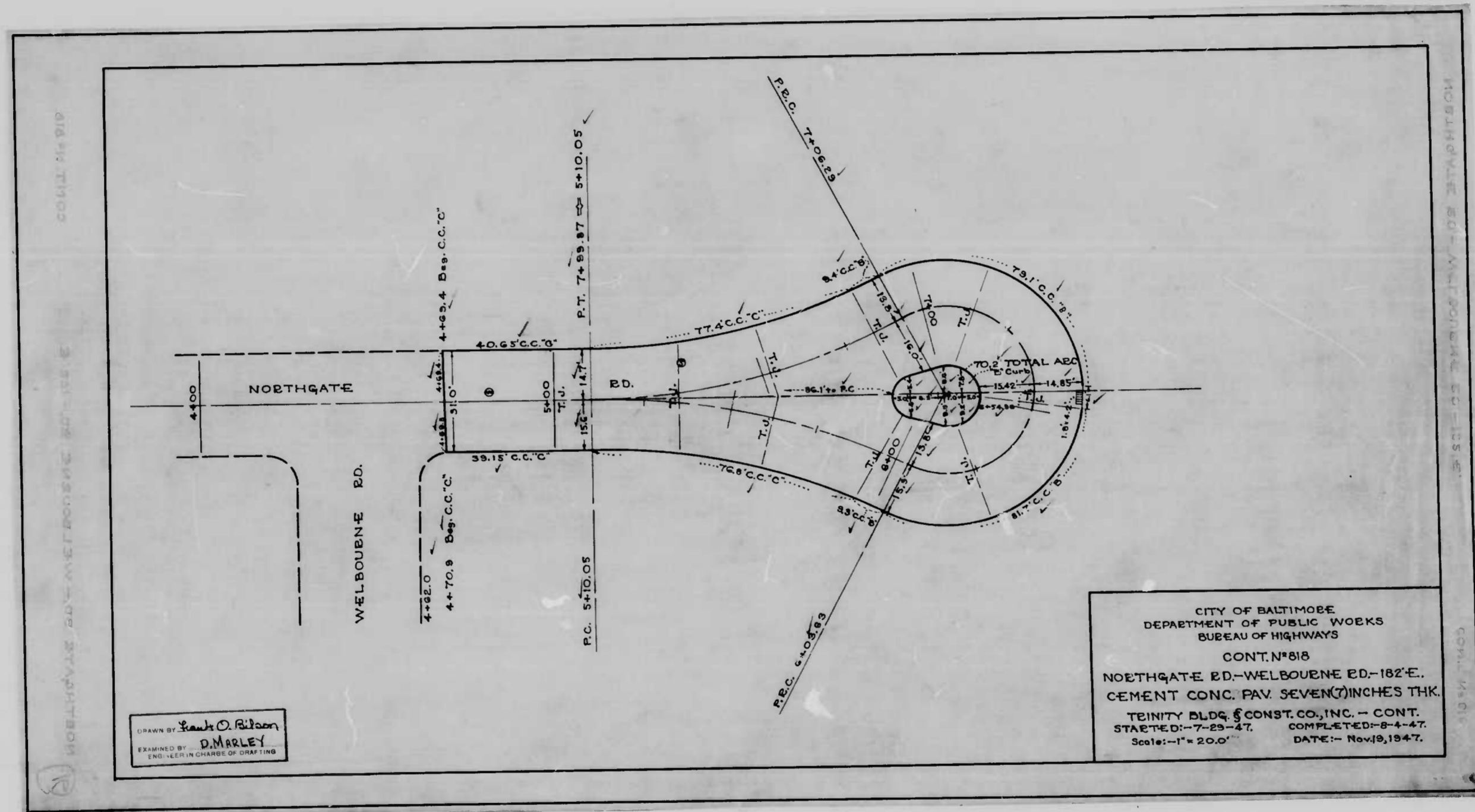
7271.42

$-(9.5 \times 7.5) \times 2 = 142.50$
 $+\frac{3146 \times 5 \times 12.47}{360} = 27.21$

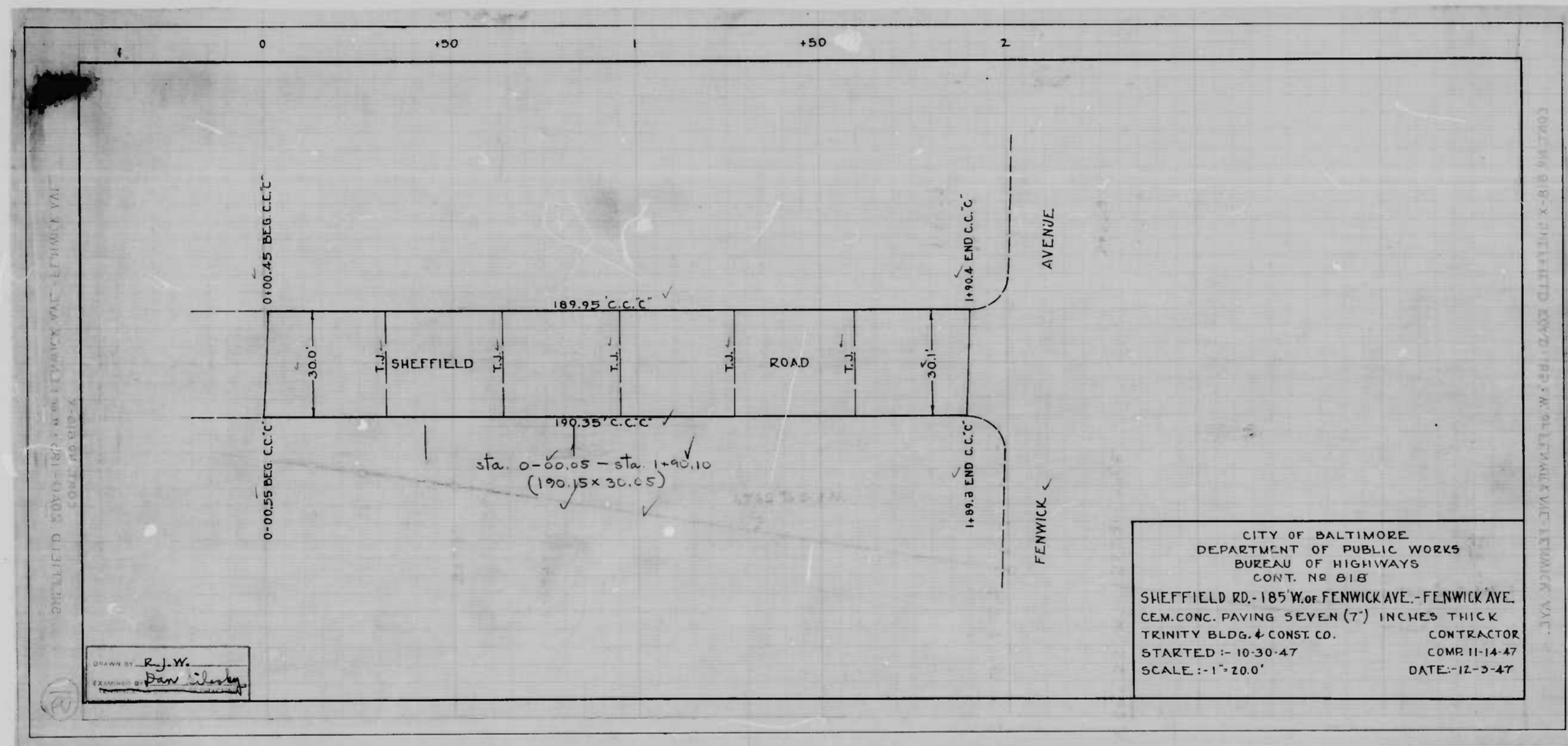
169.71 169.71

Total Adj. Ft. 7161.71
 Adj. Yds. 795.75

From Sta 5+10.05 to End
 of Cul-de-Sac
use for check



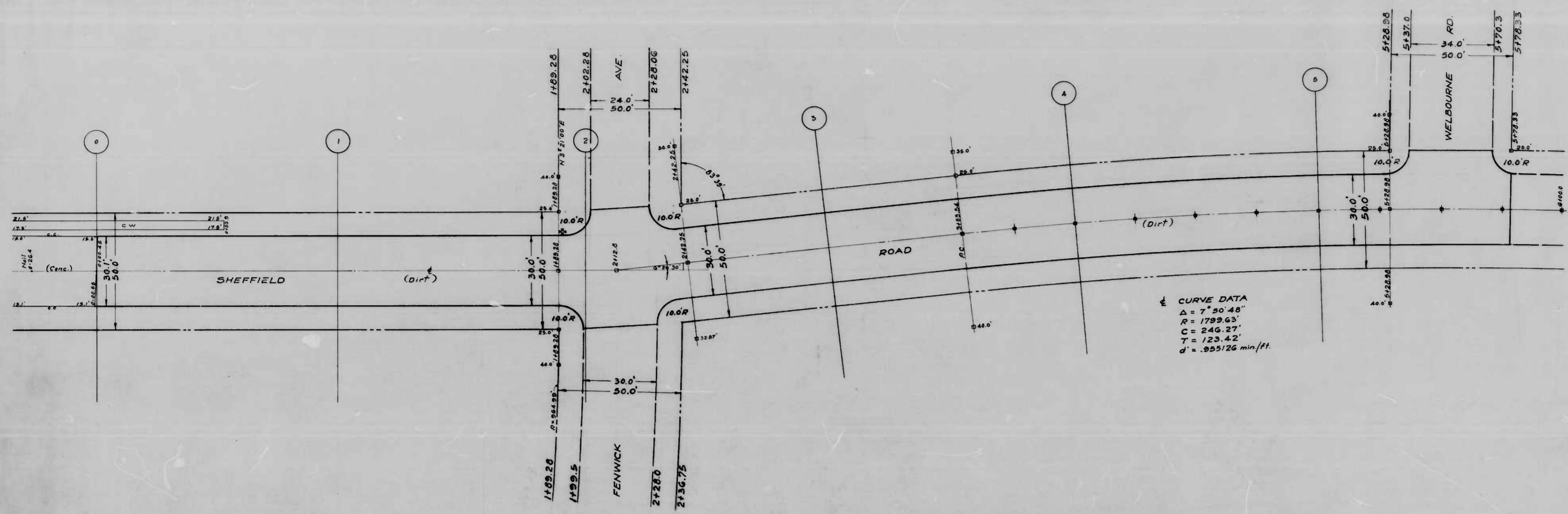
DRAWN BY: Frank O. Ritzman
 EXAMINED BY: D. MARLEY
 ENG. IN CHARGE OF DRAFTING



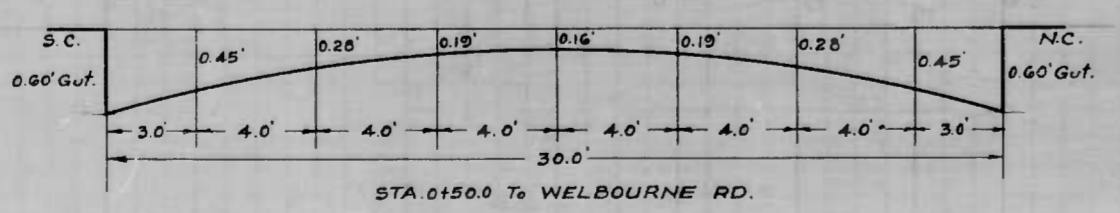
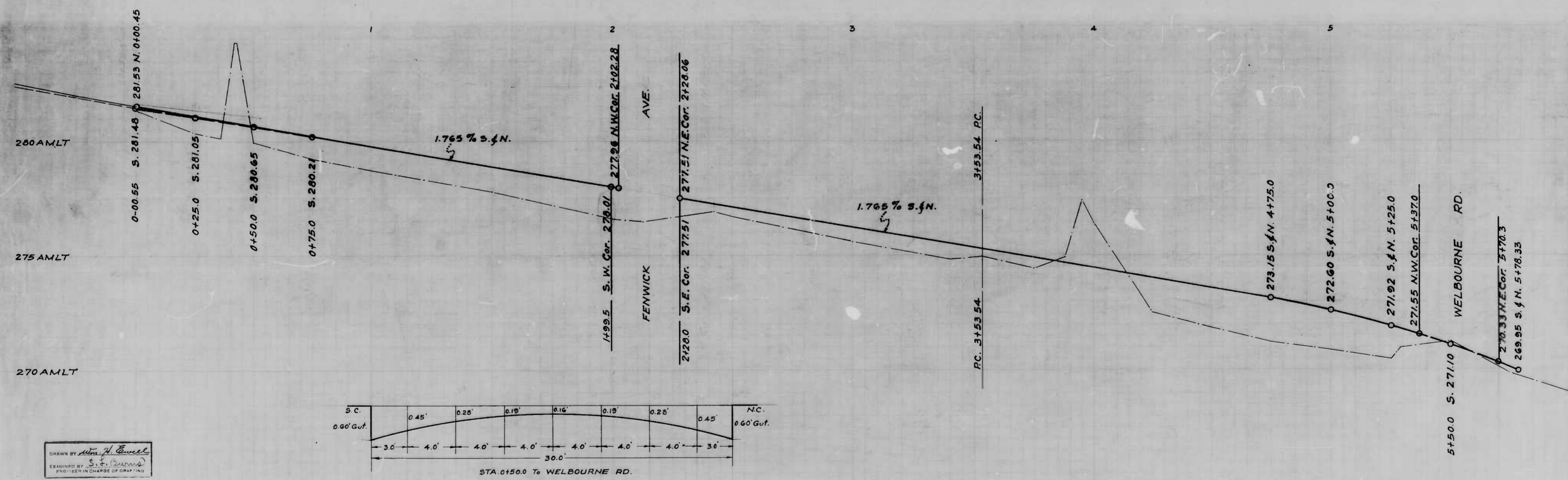
CITY OF BALTIMORE
 DEPARTMENT OF PUBLIC WORKS
 BUREAU OF HIGHWAYS
 CONT. NO. 818

SHEFFIELD RD. - 185' W. OF FENWICK AVE. - FENWICK AVE.
 CEM. CONC. PAVING SEVEN (7") INCHES THICK
 TRINITY BLDG. & CONST. CO. CONTRACTOR
 STARTED: - 10-30-47 COMR II-14-47
 SCALE: - 1" = 20.0' DATE: - 12-3-47

DRAWN BY: *R.J.W.*
 EXAMINED BY: *Paul Weston*



CURVE DATA
 $\Delta = 7^{\circ} 50' 48''$
 $R = 1789.63'$
 $C = 244.27'$
 $T = 123.42'$
 $d = .955126 \text{ min/ft.}$



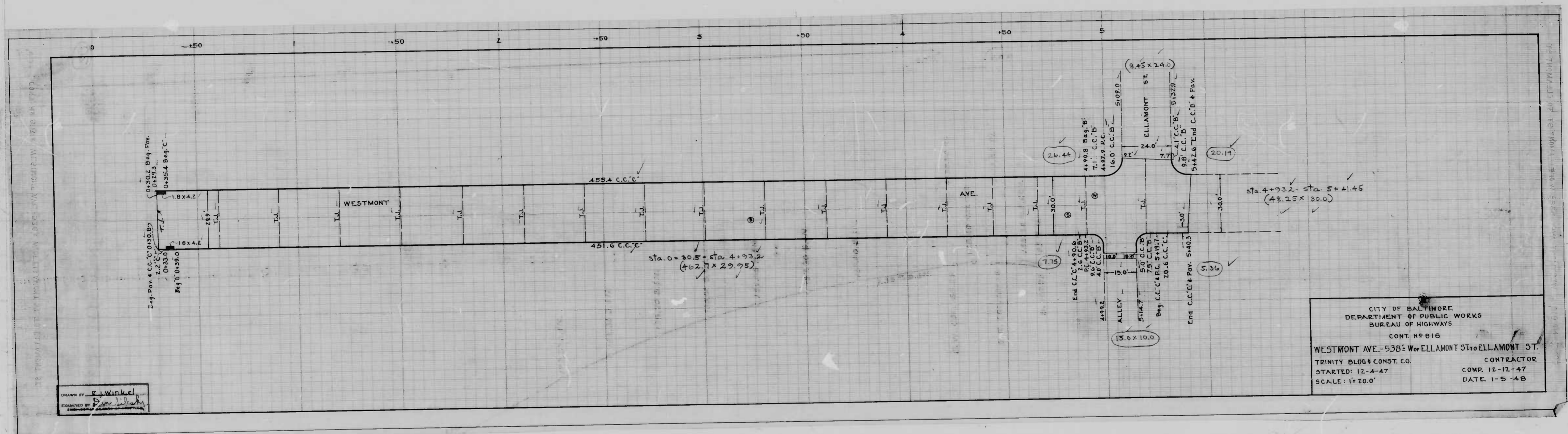
NOTE
 The Issuance of this Plan and Profile is subject to the Acceptance and/or Improvement of any

CITY OF BALTIMORE
 DEPARTMENT OF PUBLIC WORKS
 BUREAU OF HIGHWAYS
 PLAN & PROFILE
 SHEFFIELD RD. - 185' W. FENWICK AVE.
 PLAN: 1" = 20.0'
 SCALE: HOR: 1" = 20.0'
 PROF: VER: 1" = 2.0'

APPROVED
Henry Weisberg
 ASSOCIATE ENGINEER

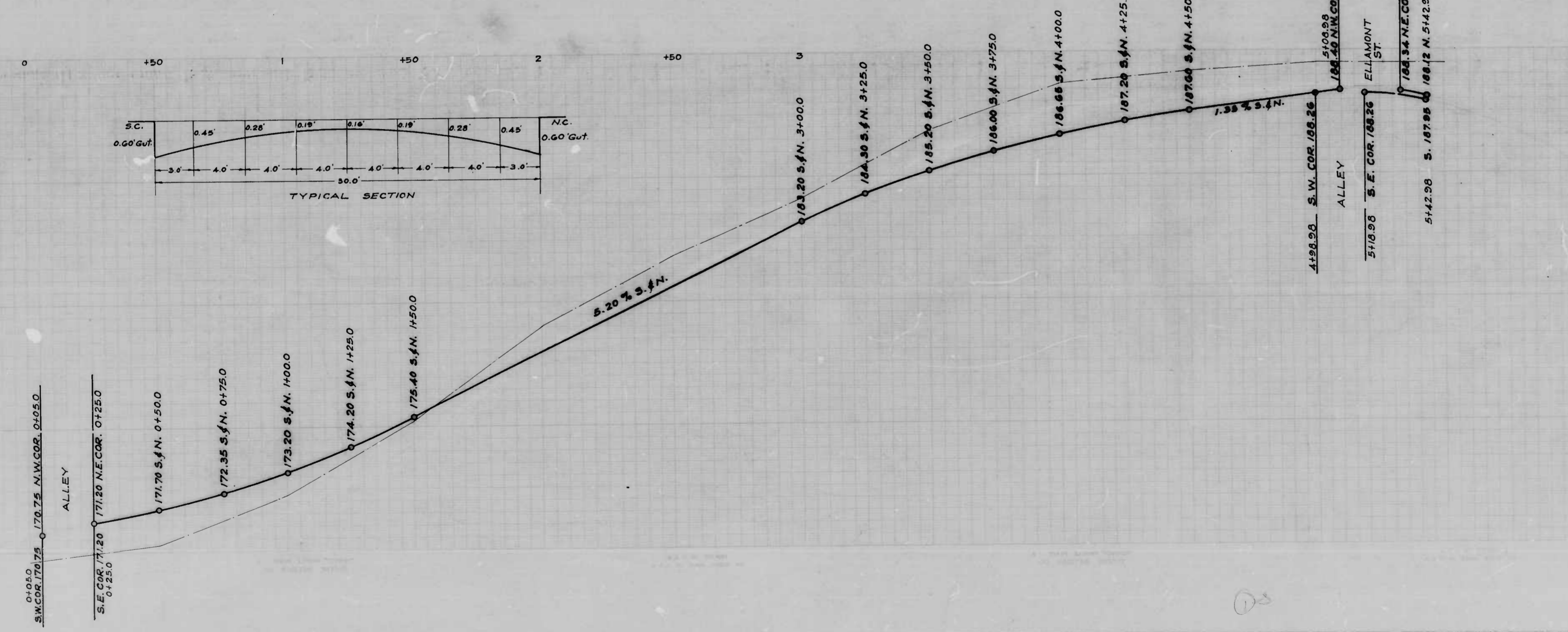
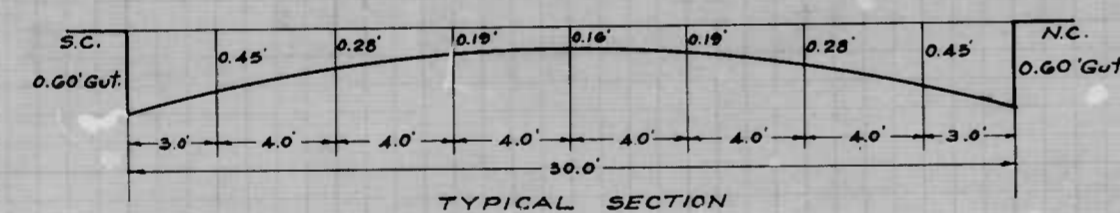
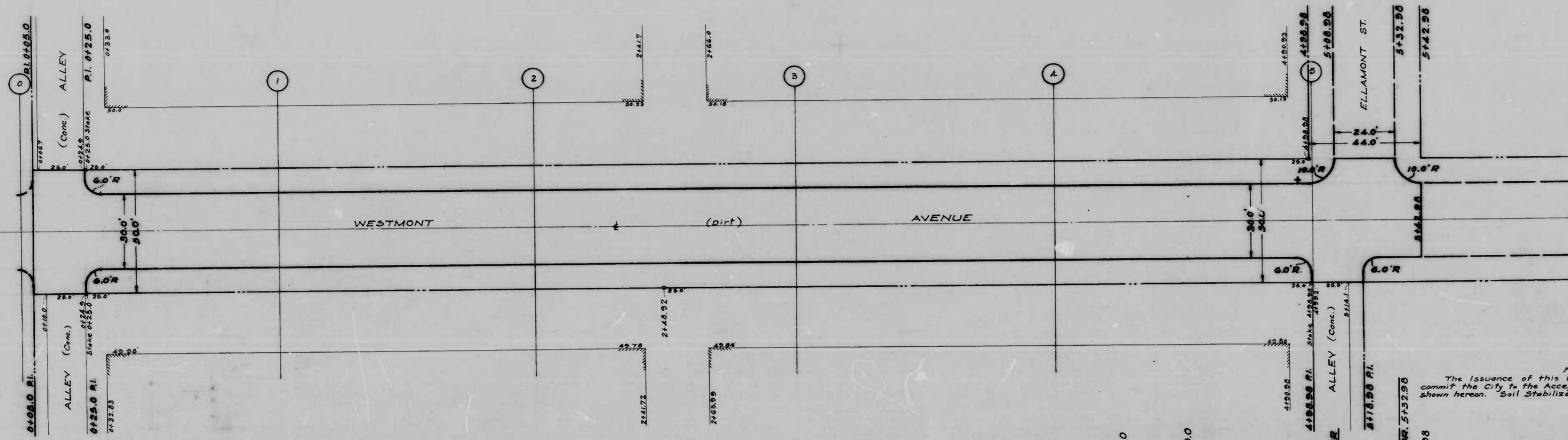
APPROVED
Edward J. Hedden
 ENGR. PLANS & SURVEYS

DRAWN BY *John H. Powell*
 EXAMINED BY *John H. Powell*
 PROFESSIONAL ENGINEER IN CHARGE OF DRAWING



CITY OF BALTIMORE
 DEPARTMENT OF PUBLIC WORKS
 BUREAU OF HIGHWAYS
 CONT. NO. 816
 WESTMONT AVE. - 538' W. OF ELLAMONT ST. TO ELLAMONT ST.
 TRINITY BLDG. & CONST. CO. CONTRACTOR
 STARTED: 12-4-47 COMP. 12-12-47
 SCALE: 1"=20.0' DATE: 1-5-48

DRAWN BY: R. J. Winkel
 EXAMINED BY: [Signature]



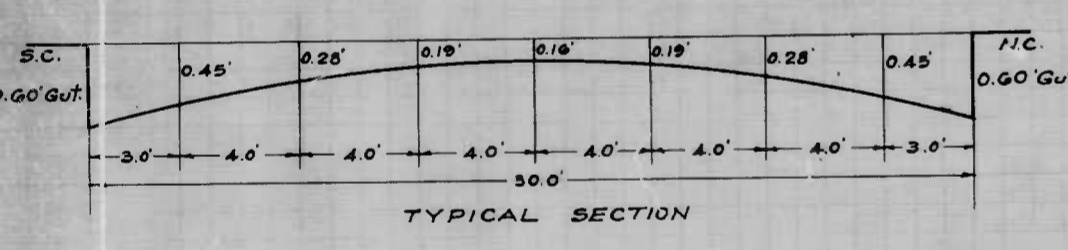
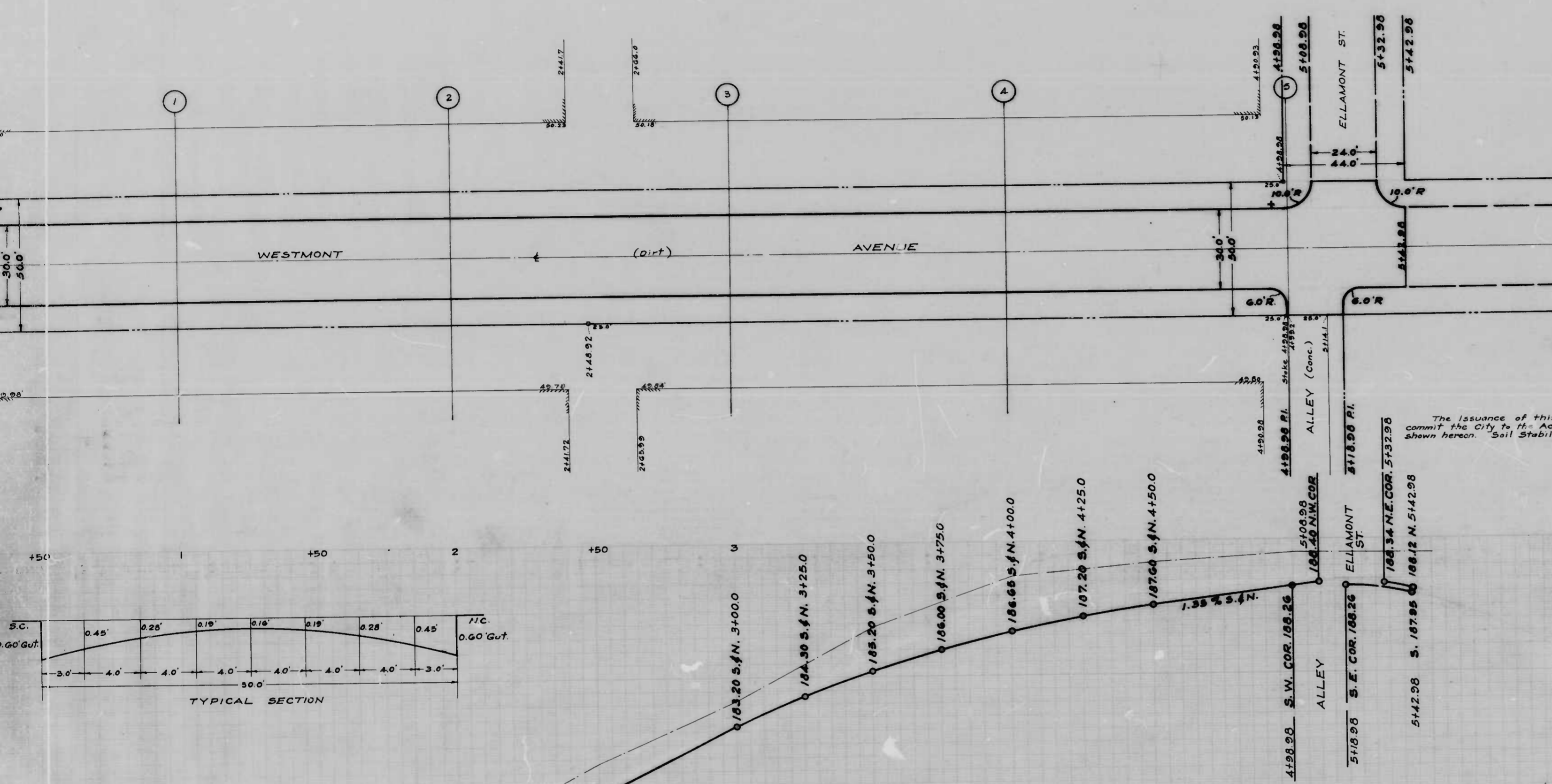
NOTE
 The issuance of this Plan & Profile does not
 commit the City to the Acceptance and/or Improvement of any Throughfare
 shown hereon. Soil Stabilization Materials and/or Underdrains are not required.

CITY OF BALTIMORE
 DEPARTMENT OF PUBLIC WORKS
 BUREAU OF HIGHWAYS
 PLAN & PROFILE
 WESTMONT AVE. - ELLAMONT ST. - 535 ± W
 Plan: 1" = 20.0'
 Scale: Hor. 1" = 20.0'
 Prof. Ver. 1" = 2.0'
 Cont. No. 818

APPROVED
Henry Mackery
 ASSOCIATE ENGINEER
 APPROVED
Edward Heckerico
 ENGINEER OF SURVEYS

APPROVED
Nathan L. ...
 HIGHWAYS
 APPROVED
Nathan L. ...
 DIRECTOR OF

DRAWN BY *W. H. Swell*
 EXAMINED BY *S. F. Curran*



NOTE
The issuance of this Plan & Profile does not commit the City to the Acceptance and/or Improvement of any Thoroughfare shown hereon. Soil Stabilization Materials and/or Underdrains are not required.

CITY OF BALTIMORE
DEPARTMENT OF PUBLIC WORKS
BUREAU OF HIGHWAYS
PLAN & PROFILE
WESTMONT AVE. - ELLAMONT ST. - 530' WEST.
Plan: 1" = 20.0' Book No. X-234
Scale: Hor: 1" = 20.0'
Prof. Ver: 1" = 2.0' Date: Nov. 24, 1947.
Cont. No. 818

APPROVED
Henry Mackery
ASSOCIATE ENGINEER
APPROVED
Edward Hecker
ENGINEER OF SURVEYS

APPROVED
James M. Jones
HIGHWAYS ENGINEER
APPROVED
Nathan L. Smith
DIRECTOR OF PUBLIC WORKS