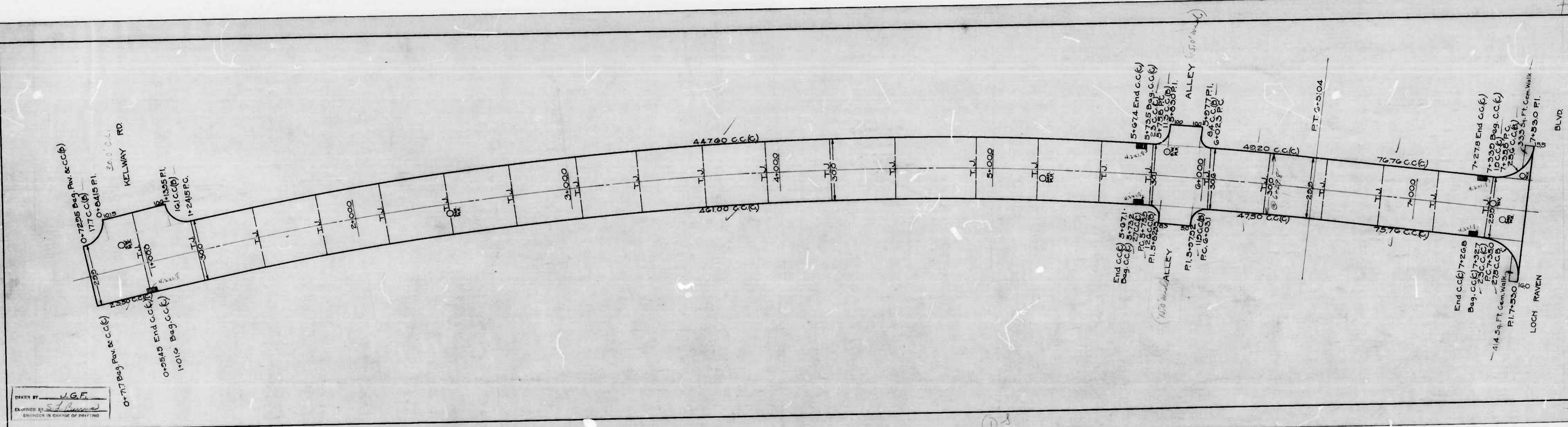
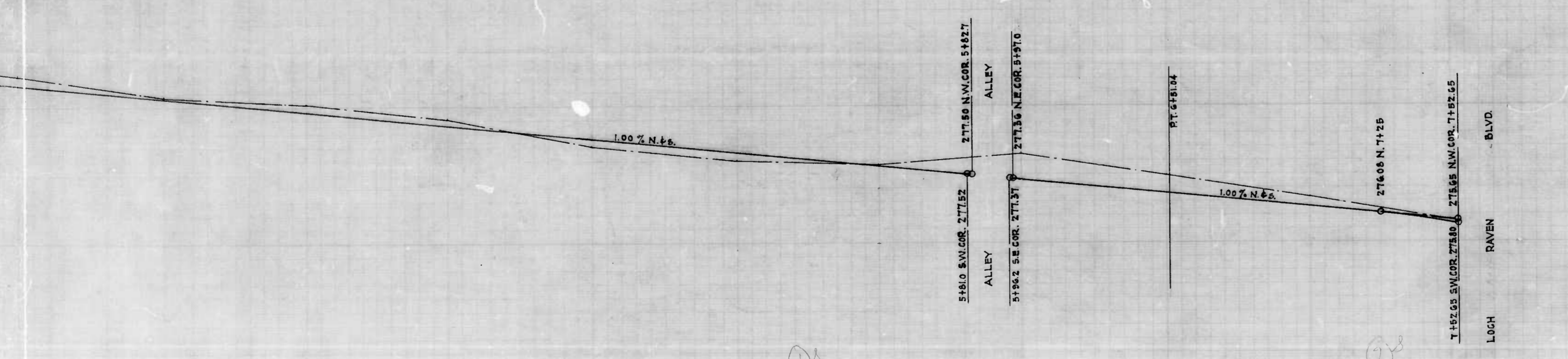
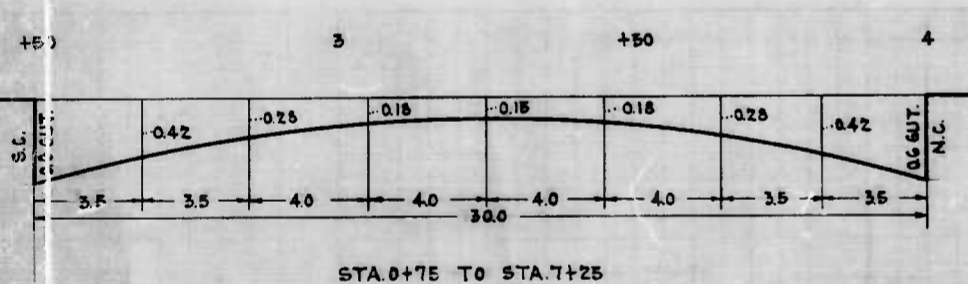
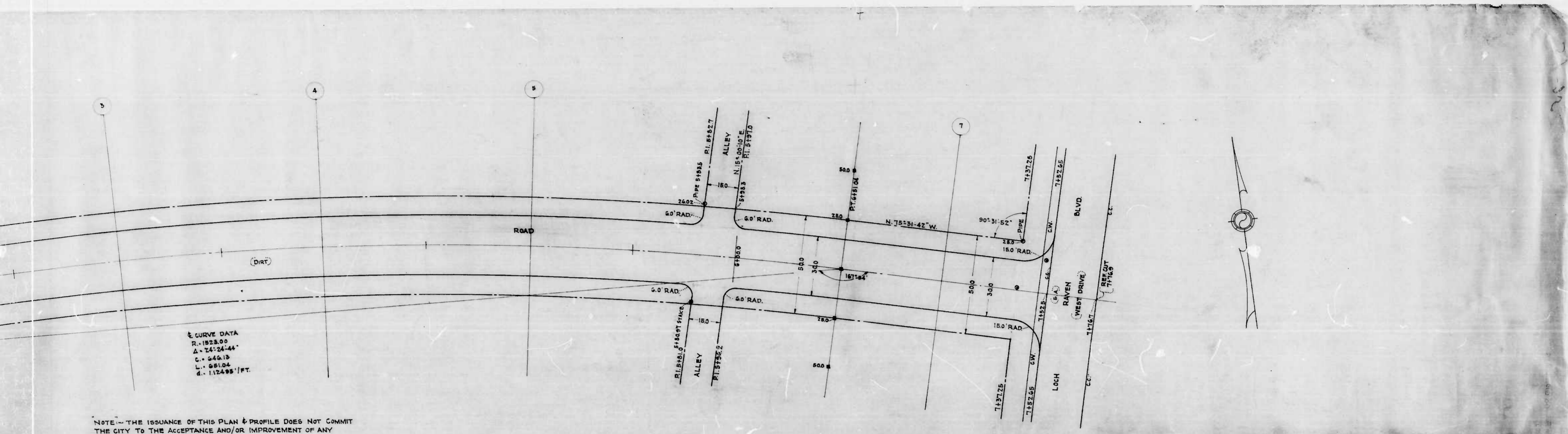


CITY OF BALTIMORE.
 DEPARTMENT OF PUBLIC WORKS
 BUREAU OF HIGHWAYS
 CONT. No 817
 STONEWOOD RD. LOCH RAVEN BLVD. to 100' W. of HILLEN RD.
 CEMENT CONCRETE PAVING SEVEN INCHES THICK
 PROPERTY SALES CO. CONTRACTOR
 STARTED: 3-20-47 COMPLETED: 7-15-47
 SCALE: 1" = 20.0' DATE: 10-24-47



DRAWN BY J.G.F.
 ENGINEER BY S.J. [Signature]
 ENGINEER IN CHARGE OF PRINTING

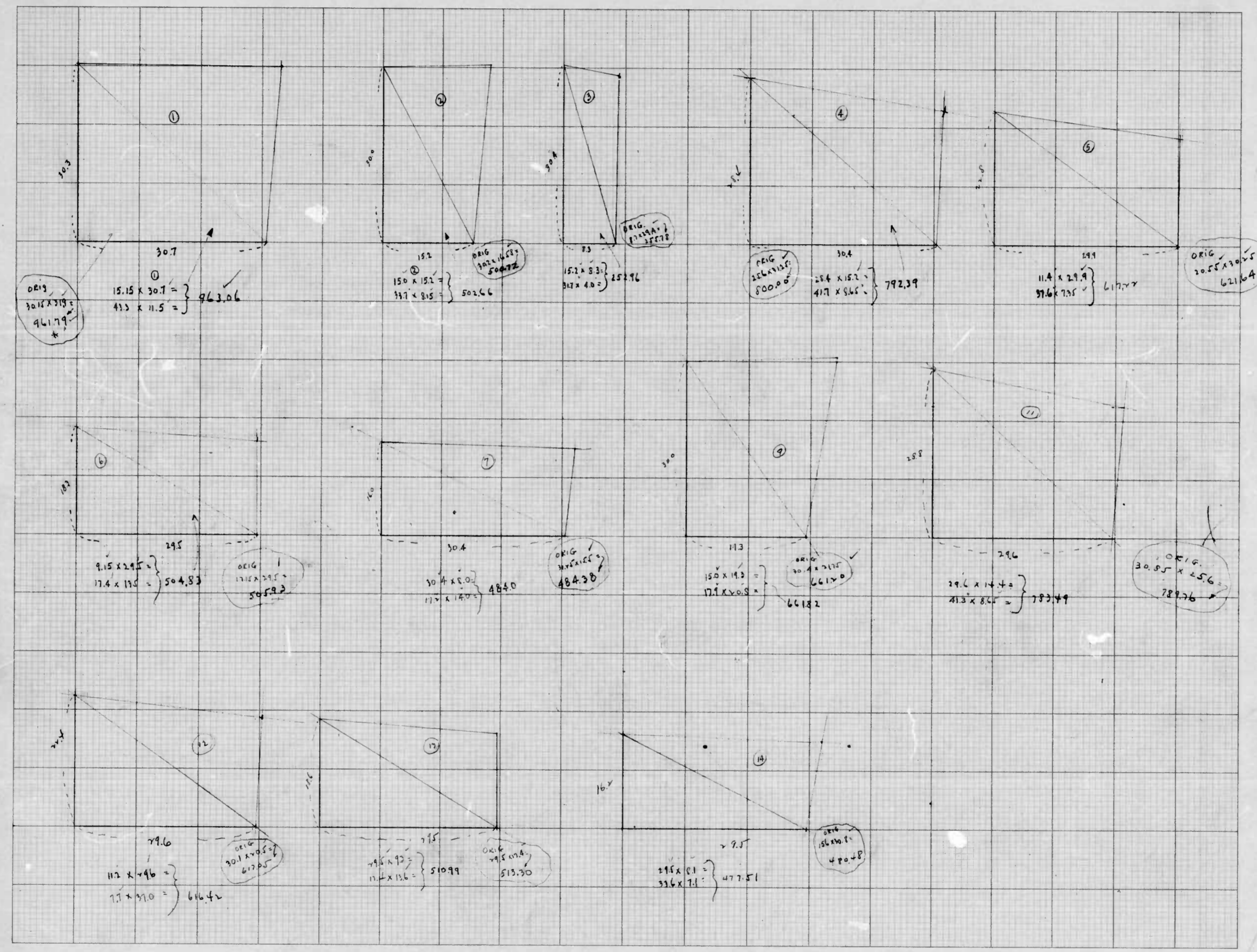
DE
 STONEW
 CEMENT
 PROPERTY
 STARTED
 SCALE - 1"



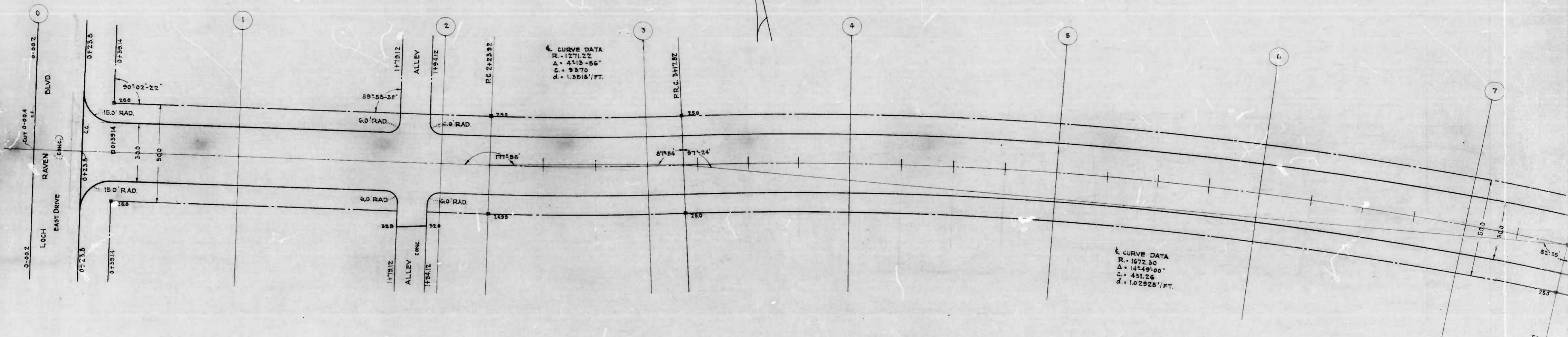
CITY OF BALTIMORE
 DEPARTMENT OF PUBLIC WORKS
 BUREAU OF HIGHWAYS
 PLAN & PROFILE
 STONEWOOD RD. - KELWAY RD. TO LOCH RAVEN BLVD.
 PLAN - 1" = 200'
 PROFILE - 1" = 200'
 VER. - 1" = 20'
 CONT. N. 817
 BOOK N. X - 214
 MAY 20, 1946

APPROVED - *Henry Weisley*
 ASSOCIATE ENGINEER
 APPROVED - *Edward J. Hader*
 ENGR. - PLANS & SURVEYS

APPROVED - *W. A. P. Fischer*
 HIGHWAYS ENGINEER
 APPROVED - *Arthur R. Smith*
 CHIEF ENGINEER



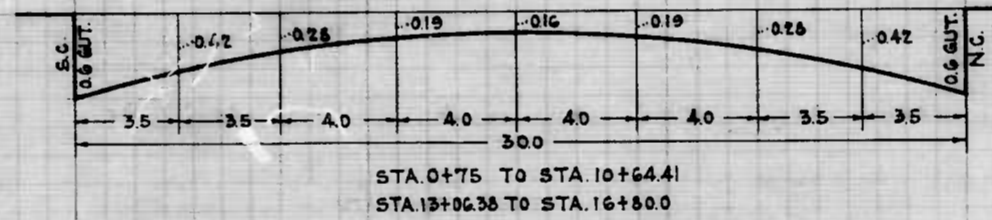
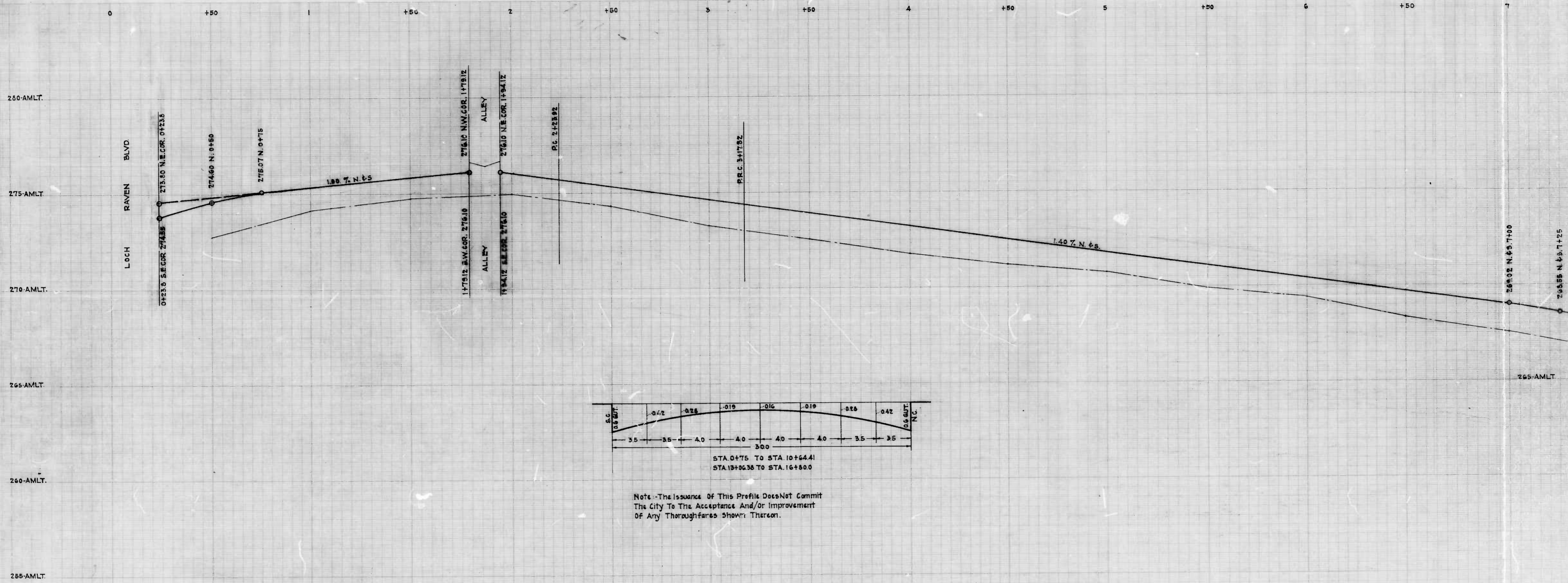
①



CURVE DATA
 R. 1271.22
 Δ. 41°-0'-56"
 C. 937.0
 d. 1.3518'/FT.

CURVE DATA
 R. 1672.30
 Δ. 14°-29'-00"
 C. 431.26
 d. 1.02326'/FT.

DRAWN BY: J.J. HAYDEN
 CHECKED BY: [Signature]
 DATE: [Blank]



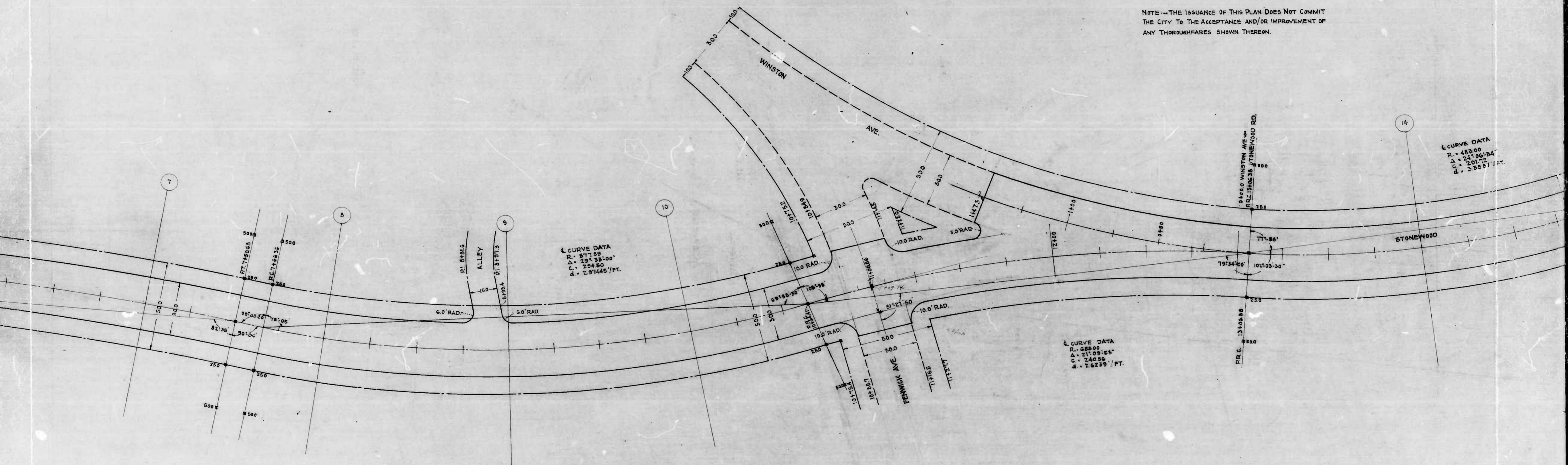
Note: The issuance of this profile does not commit the City to the acceptance and/or improvement of any thoroughfares shown thereon.

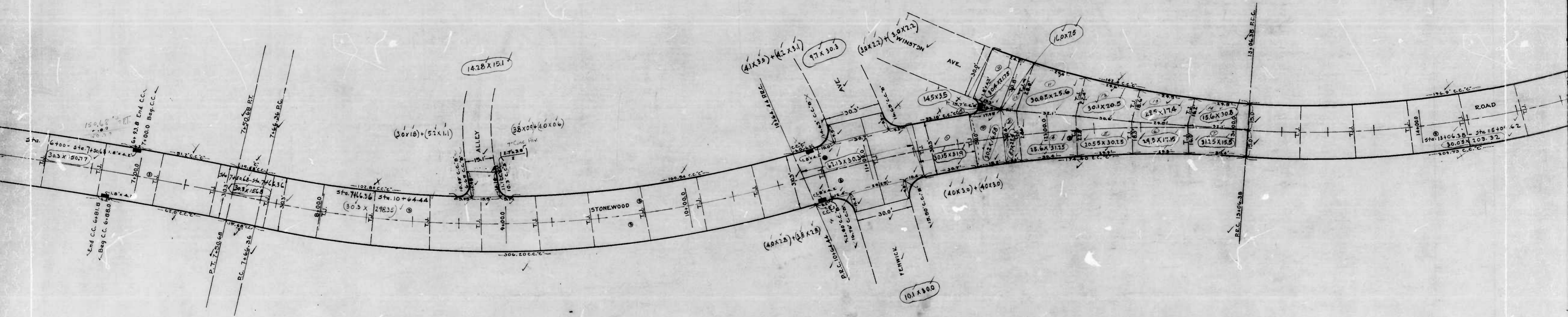
DRAWN BY J.J. HAYDEN
 EXAMINED BY S. L. LINDSEY
 ENGINEER

31-51

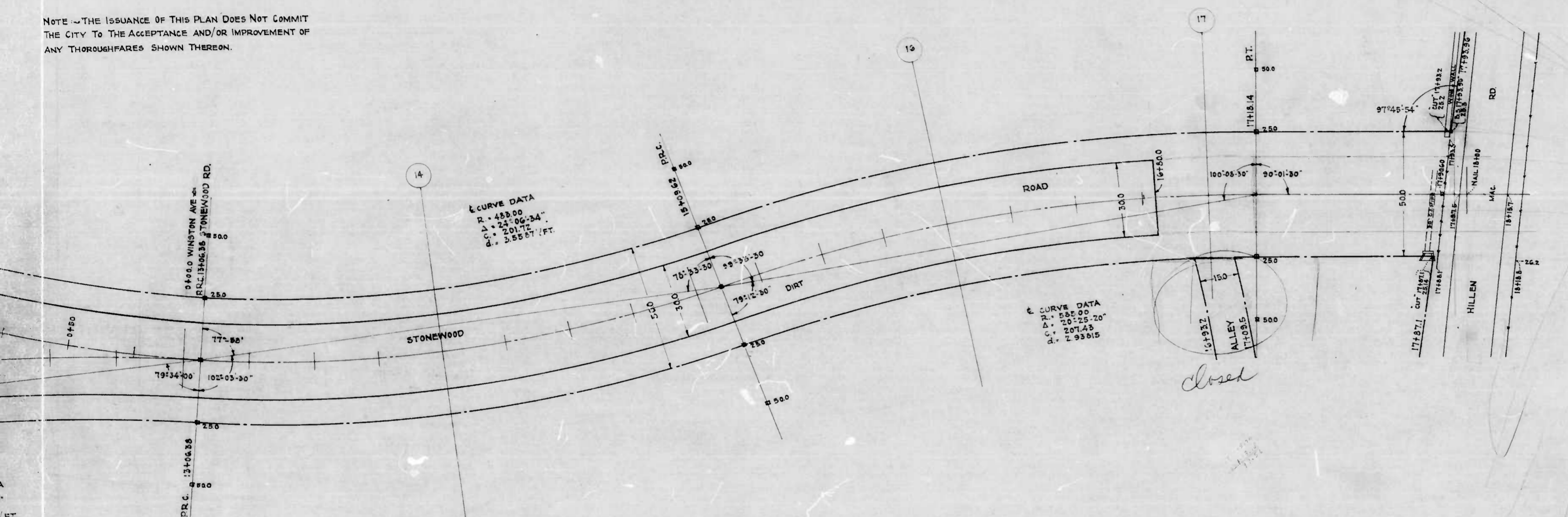
31-51

NOTE - THE ISSUANCE OF THIS PLAN DOES NOT COMMIT THE CITY TO THE ACCEPTANCE AND/OR IMPROVEMENT OF ANY THOROUGHFARES SHOWN THEREON.





NOTE - THE ISSUANCE OF THIS PLAN DOES NOT COMMIT THE CITY TO THE ACCEPTANCE AND/OR IMPROVEMENT OF ANY THOROUGHFARES SHOWN THEREON.



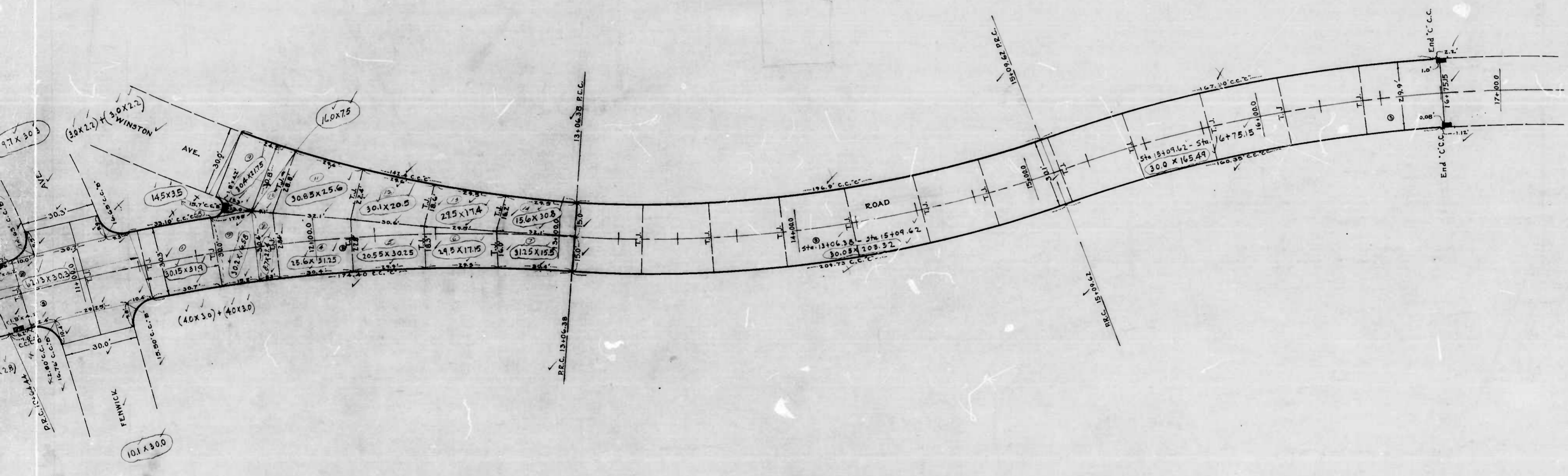
closed

CITY OF BALTIMORE
 DEPARTMENT OF PUBLIC WORKS
 BUREAU OF HIGHWAYS
 PLAN OF
 STONEWOOD RD. - LOCH RAVEN BLVD TO HILLEN RD.
 CONT. NO. 817

SCALE - 1" = 200' Book No. X-214
 MAY 24, 1946

APPROVED: *Henry Weikert* APPROVED: *[Signature]*
 ASSOCIATE ENGINEER HIGHWAYS ENGINEER

APPROVED: *[Signature]* APPROVED: *[Signature]*
 ENGR. PLANS & SURVEYS CHIEF ENGINEER



CITY OF BALTIMORE
 DEPARTMENT OF PUBLIC WORKS
 BUREAU OF HIGHWAYS
 CONT. NO. 817
 STONEWOOD RD. LOCH RAVEN BLVD. to 1001 W. of HILLEN RD.
 CEMENT CONCRETE PAVING SEVEN INCHES THICK
 PROPERTY SALES CO. CONTRACTOR
 STARTED: 3-20-47 COMPLETED: 7-15-47
 SCALE: 1" = 20' DATE: 10-24-47