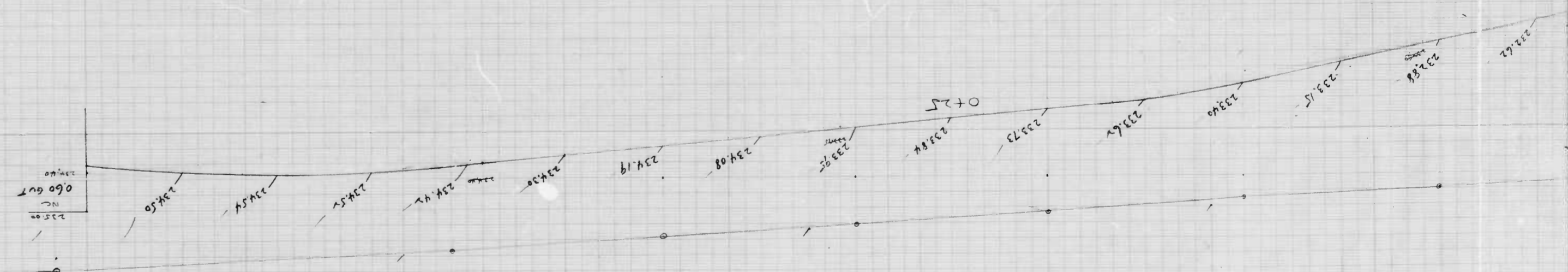
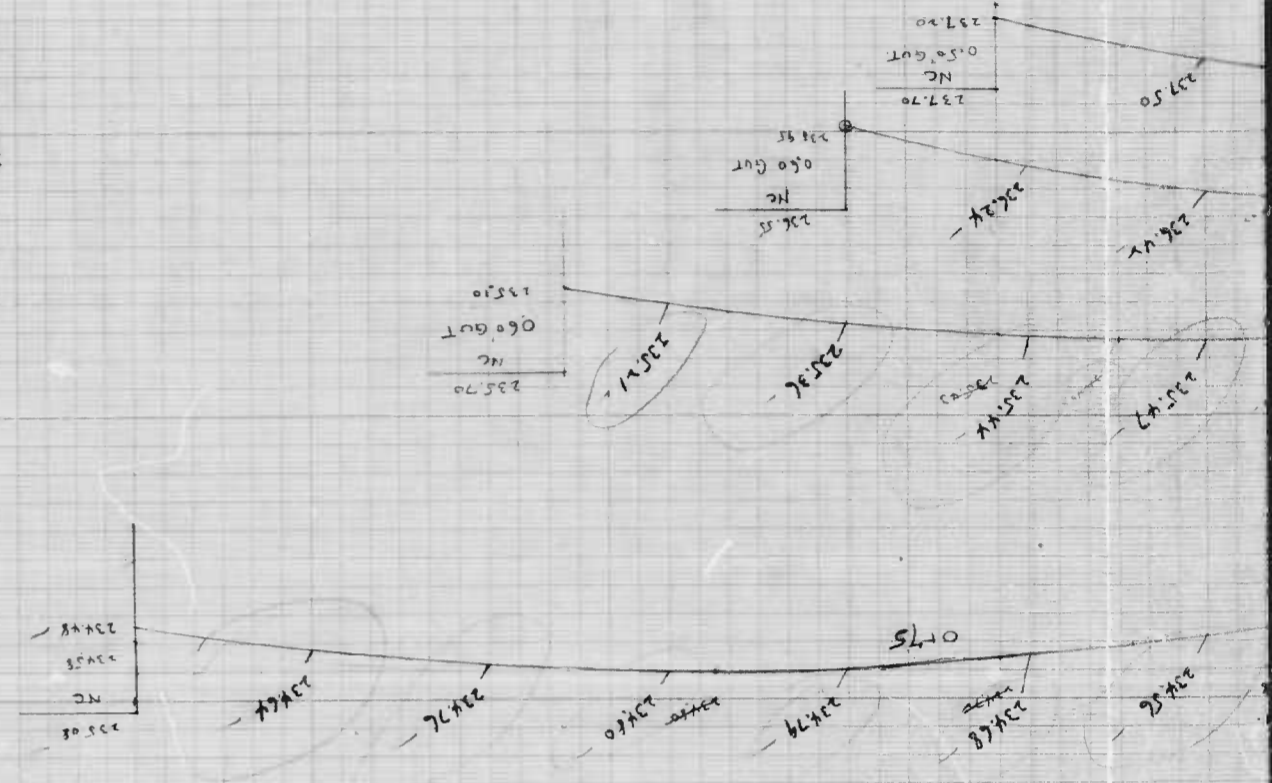
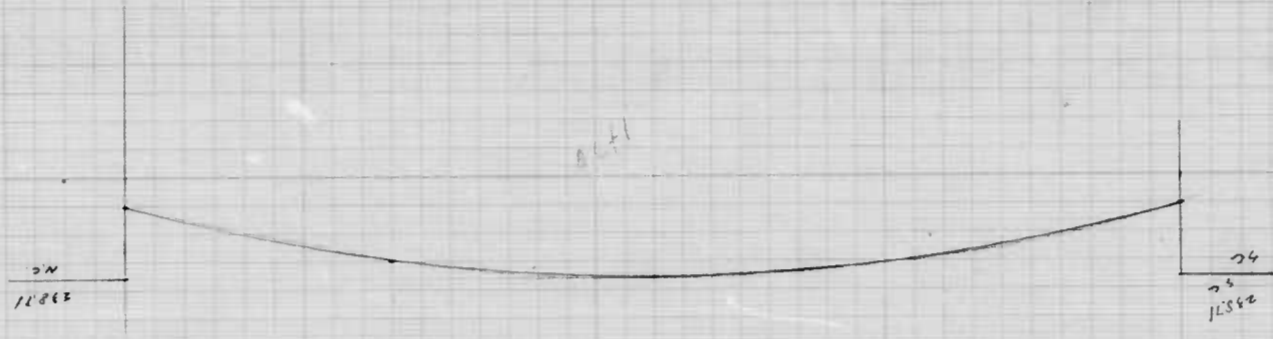


809

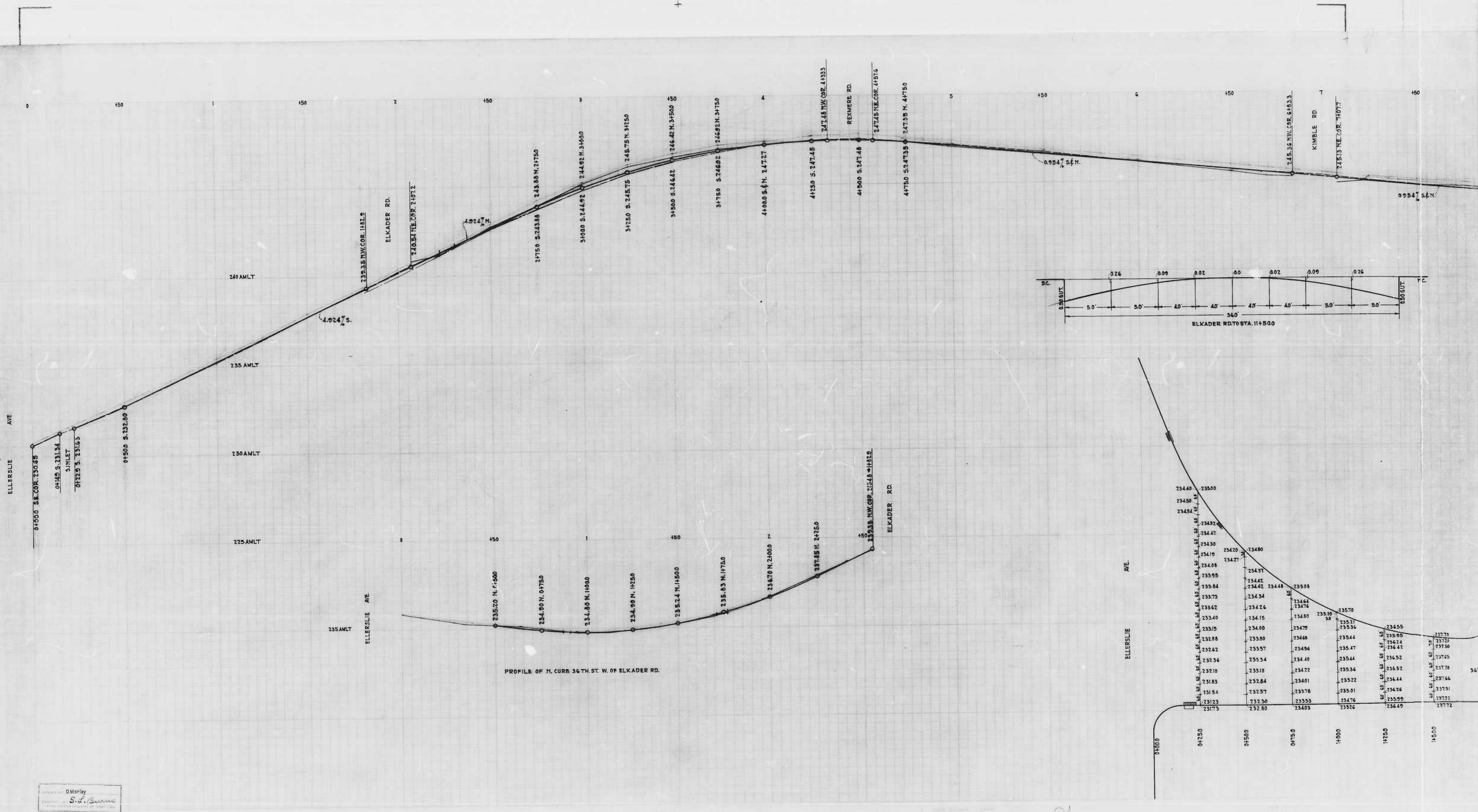
RATIO - 24

5

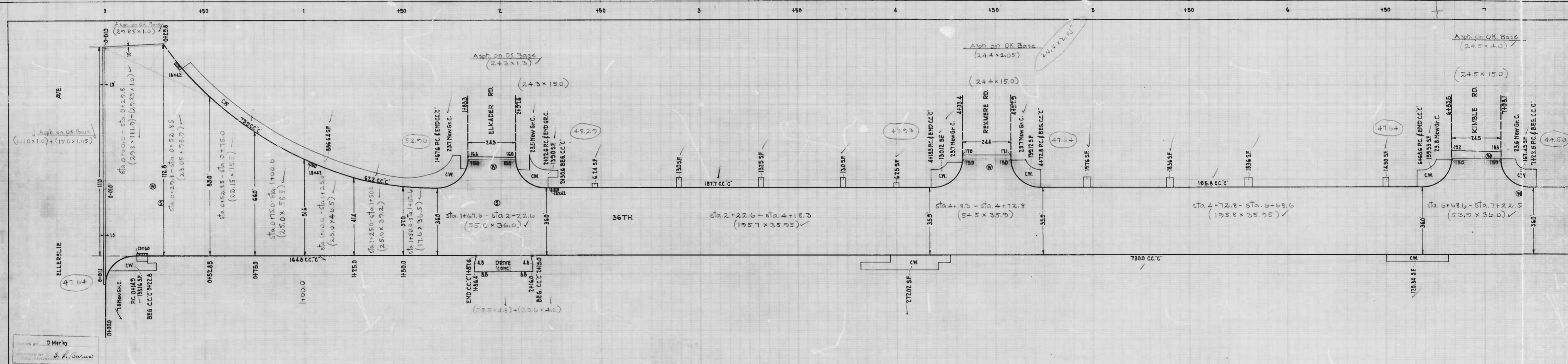
Sections 36th St
Ellenlie Ave to Elkader Rd
Cant 809

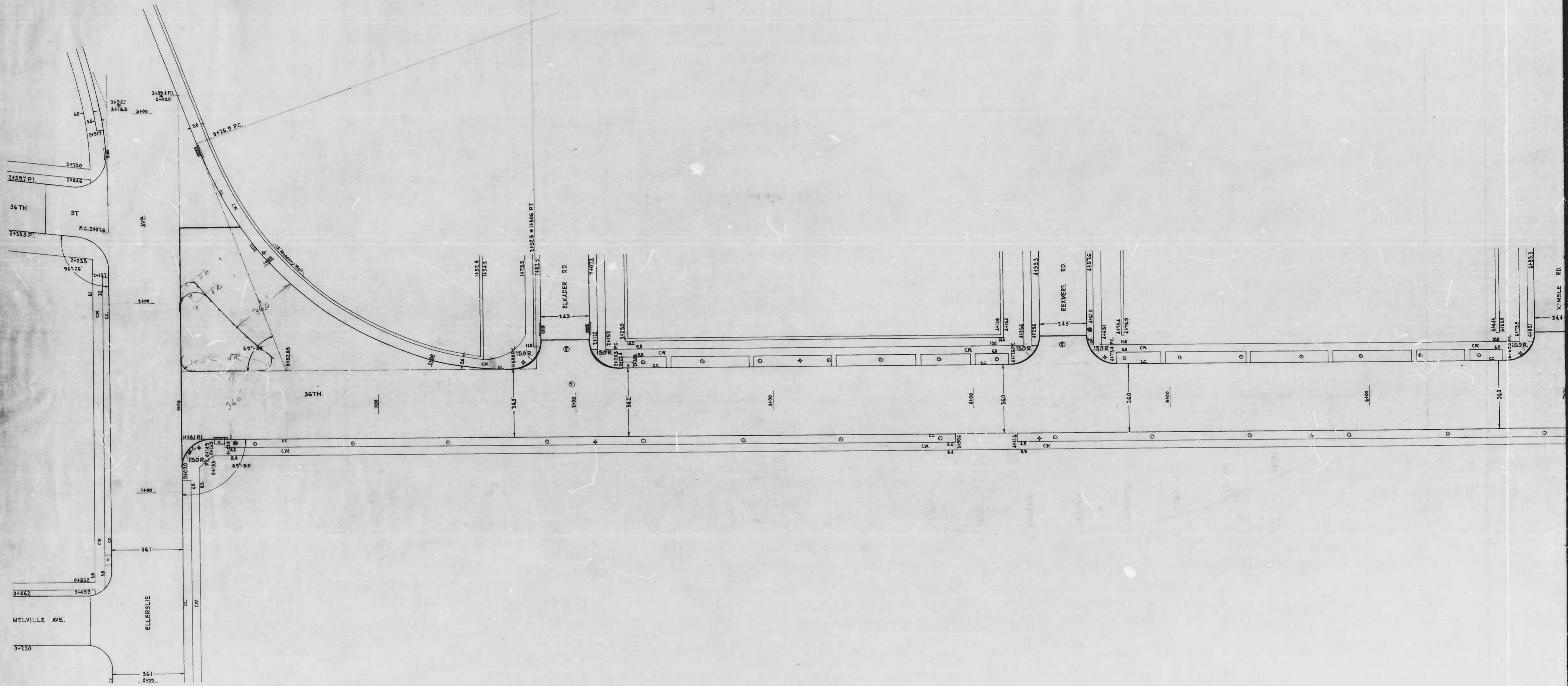


1/2



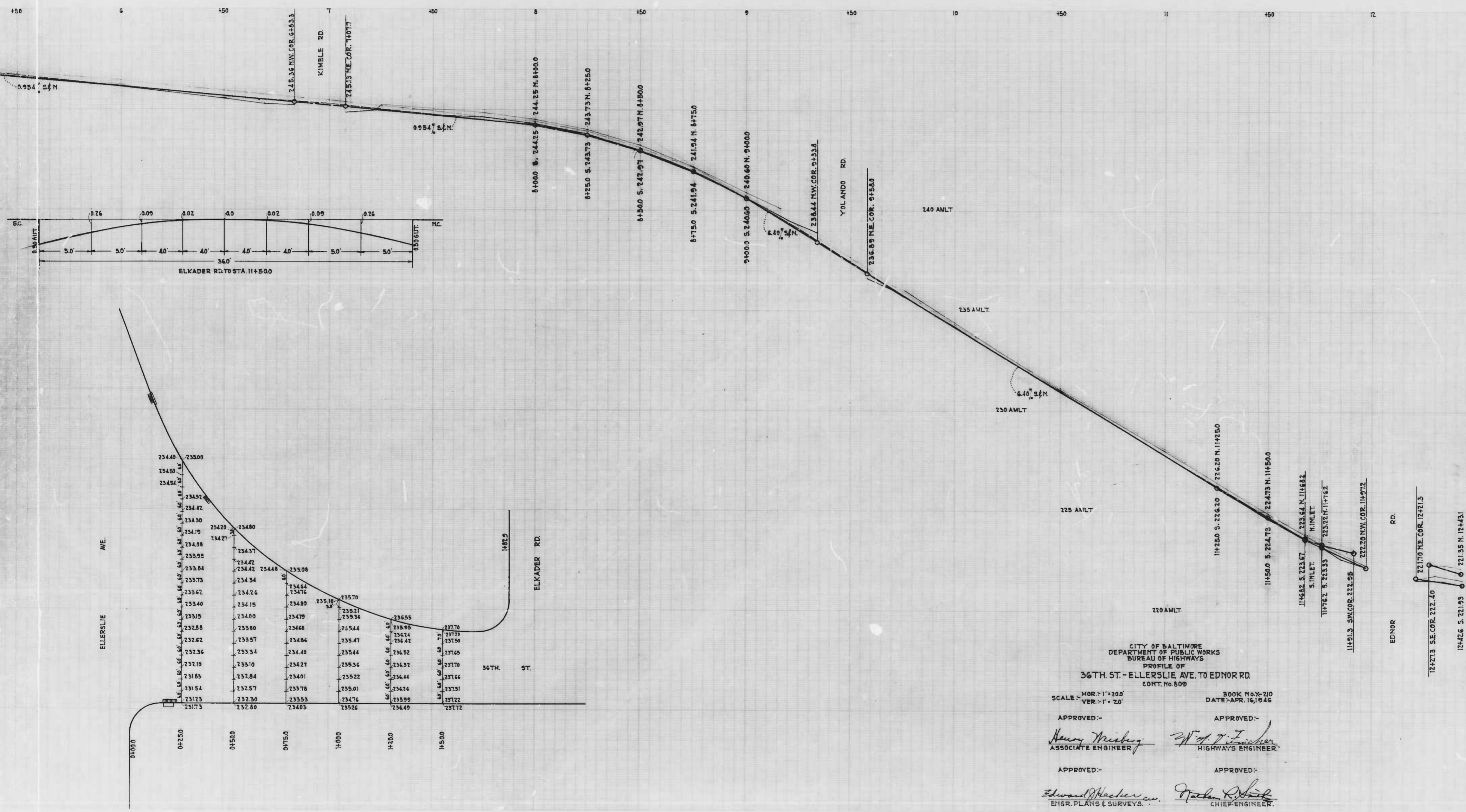
DESIGNED BY: D. Marley
 S. L. Burns
 PROFESSIONAL ENGINEER





D. Marley
CHIEF OF ENGINEERS
1000 10th St. S.W. (corner)
EDMONTON, ALTA. CANADA T6P 0P9

0.3



CITY OF BALTIMORE
 DEPARTMENT OF PUBLIC WORKS
 BUREAU OF HIGHWAYS
 PROFILE OF
36TH ST. - ELLERSLIE AVE. TO EDNOR RD.
 CONT. No. 809

SCALE - HOR. 1" = 20'
 VER. 1" = 20'

BOOK No. 210
 DATE - APR. 16, 1946

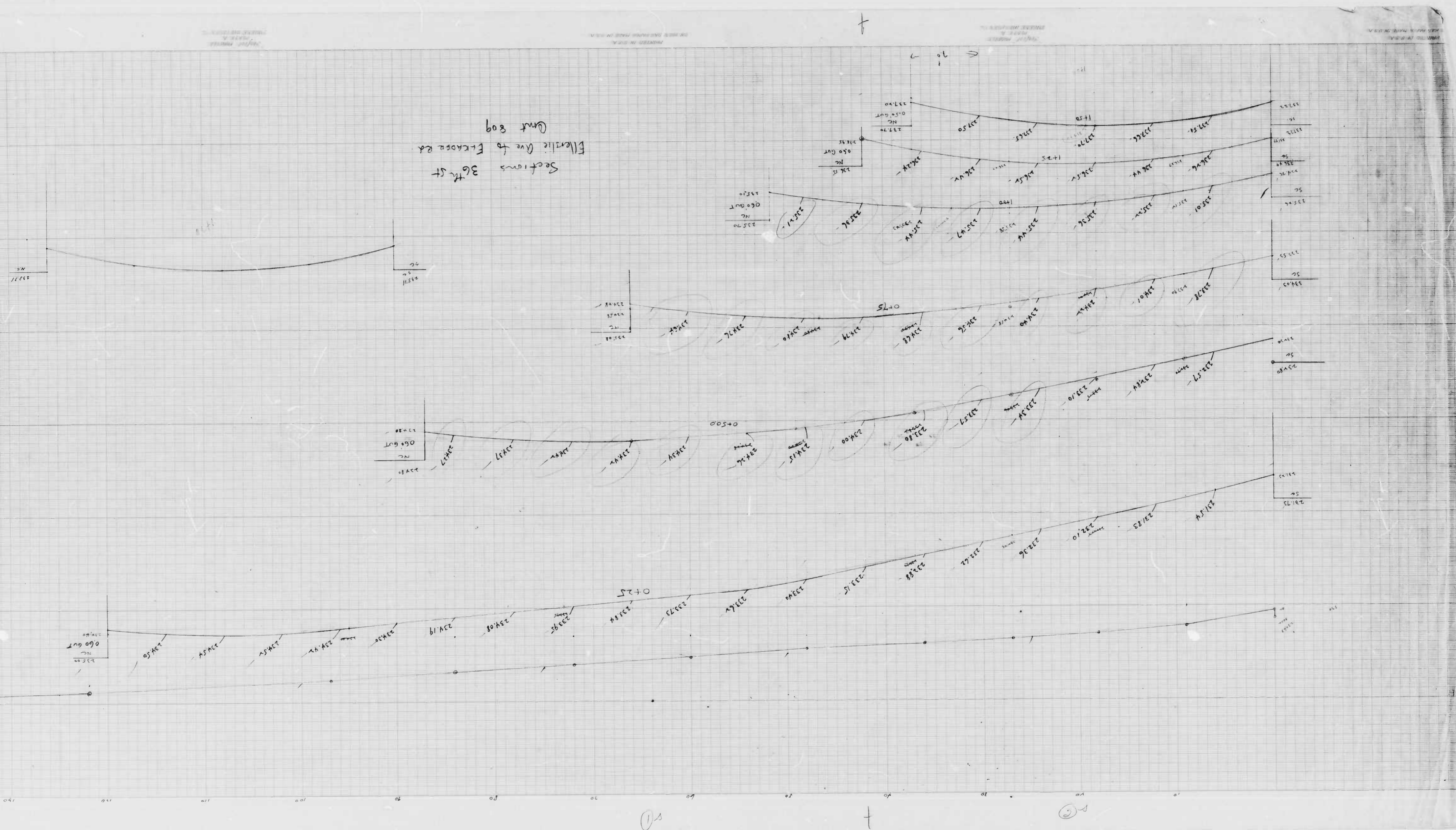
APPROVED - *Henry Wisberg*
 ASSOCIATE ENGINEER

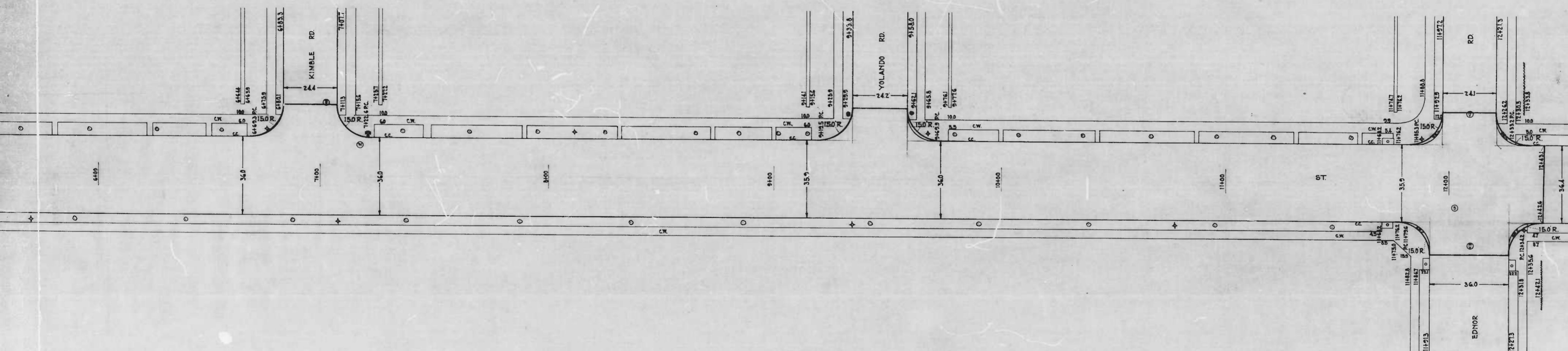
APPROVED - *W. P. Fisher*
 HIGHWAYS ENGINEER

APPROVED - *Edward H. Hatcher, Jr.*
 ENGR. PLANS & SURVEYS.

APPROVED - *Frank R. Smith*
 CHIEF ENGINEER.

Sections 36th St
Ellenlie Ave to Elkwood Rd
Cant 809



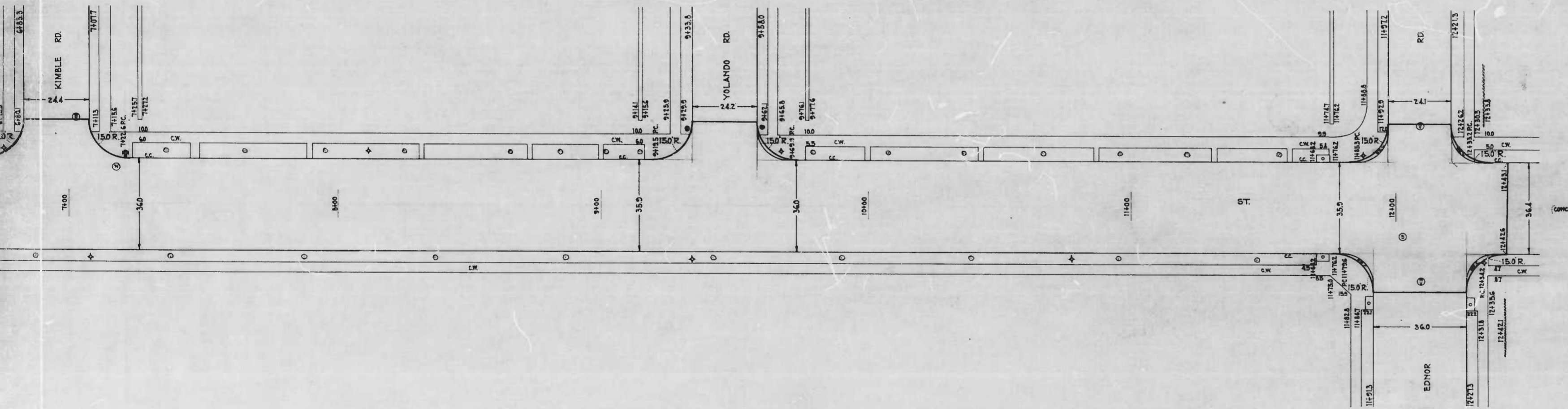


CITY OF BALTIMORE
 DEPARTMENT OF PUBLIC WORKS
 BUREAU OF HIGHWAYS
 PLAN OF
 36TH ST. - ELLERSLIE AVE. TO EDNOR RD.
 CONT'NO. 809

SCALE: 1" = 20.0' BOOK No. X-210
 DATE: APR. 10, 1946

APPROVED: *Henry Westberg* APPROVED: *W. F. D. Zander*
 ASSOCIATE ENGINEER HIGHWAY ENGINEER

APPROVED: *Edward Weeber* APPROVED: *Robert L. Smith*
 ENGR. PLANS & SURVEYS CHIEF ENGINEER



CITY OF BALTIMORE
 DEPARTMENT OF PUBLIC WORKS
 BUREAU OF HIGHWAYS
 PLAN OF
 36TH ST. - ELLERSLIE AVE. TO EDNOR RD.
 CONT. NO. 000

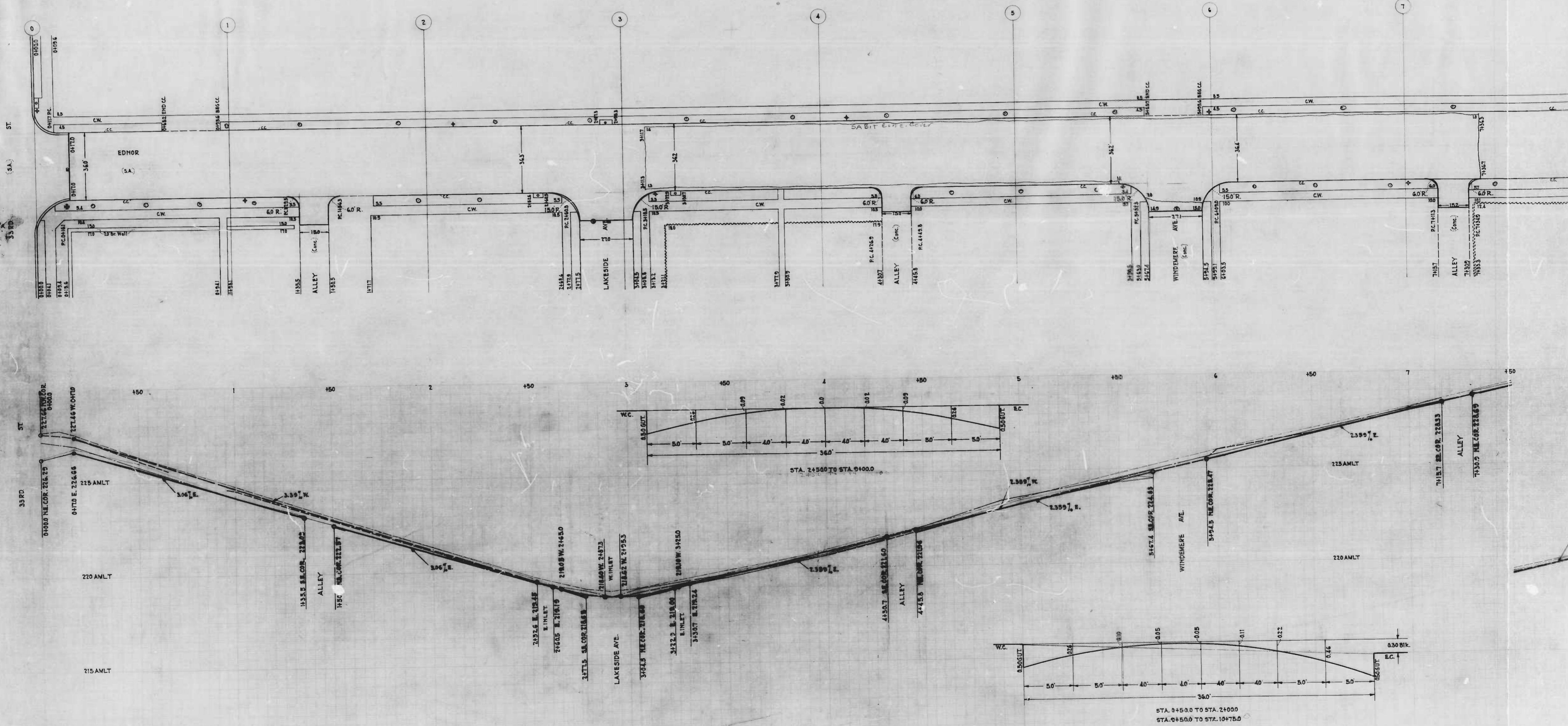
SCALE: 1" = 20.0' BOOK No. X-210
 DATE: APR. 10, 1946

APPROVED: *Henry Weinstock* APPROVED: *W. H. P. Fischer*
 ASSOCIATE ENGINEER HIGHWAYS ENGINEER

APPROVED: *Edward Weckert* APPROVED: *Arthur R. Smith*
 ENGR. PLANS & SURVEYS CHIEF ENGINEER

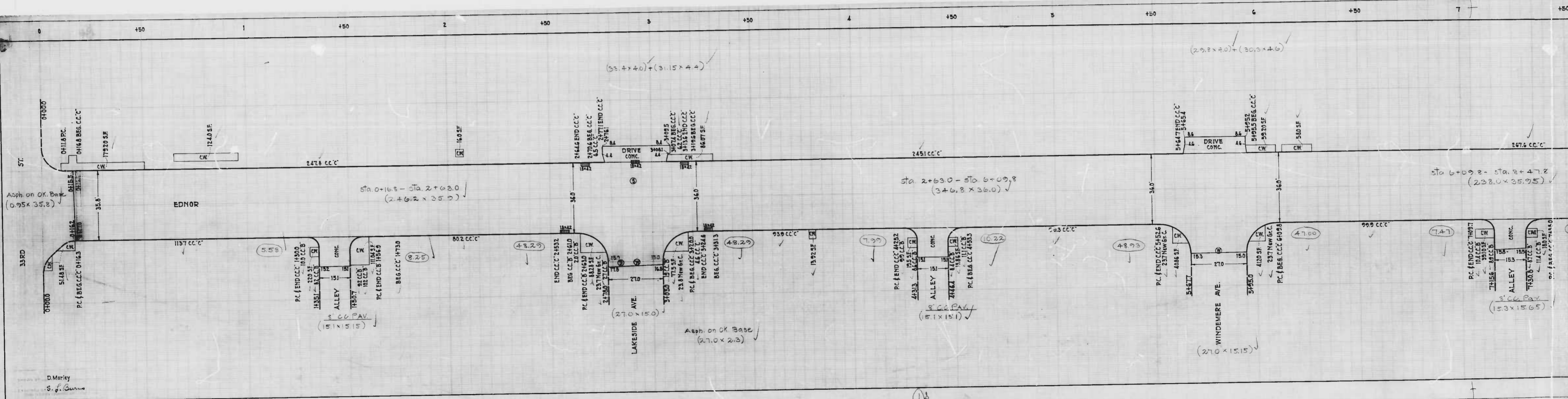
REPRODUCED FROM ORIGINAL DRAWING
 BY THE CITY OF BALTIMORE

3

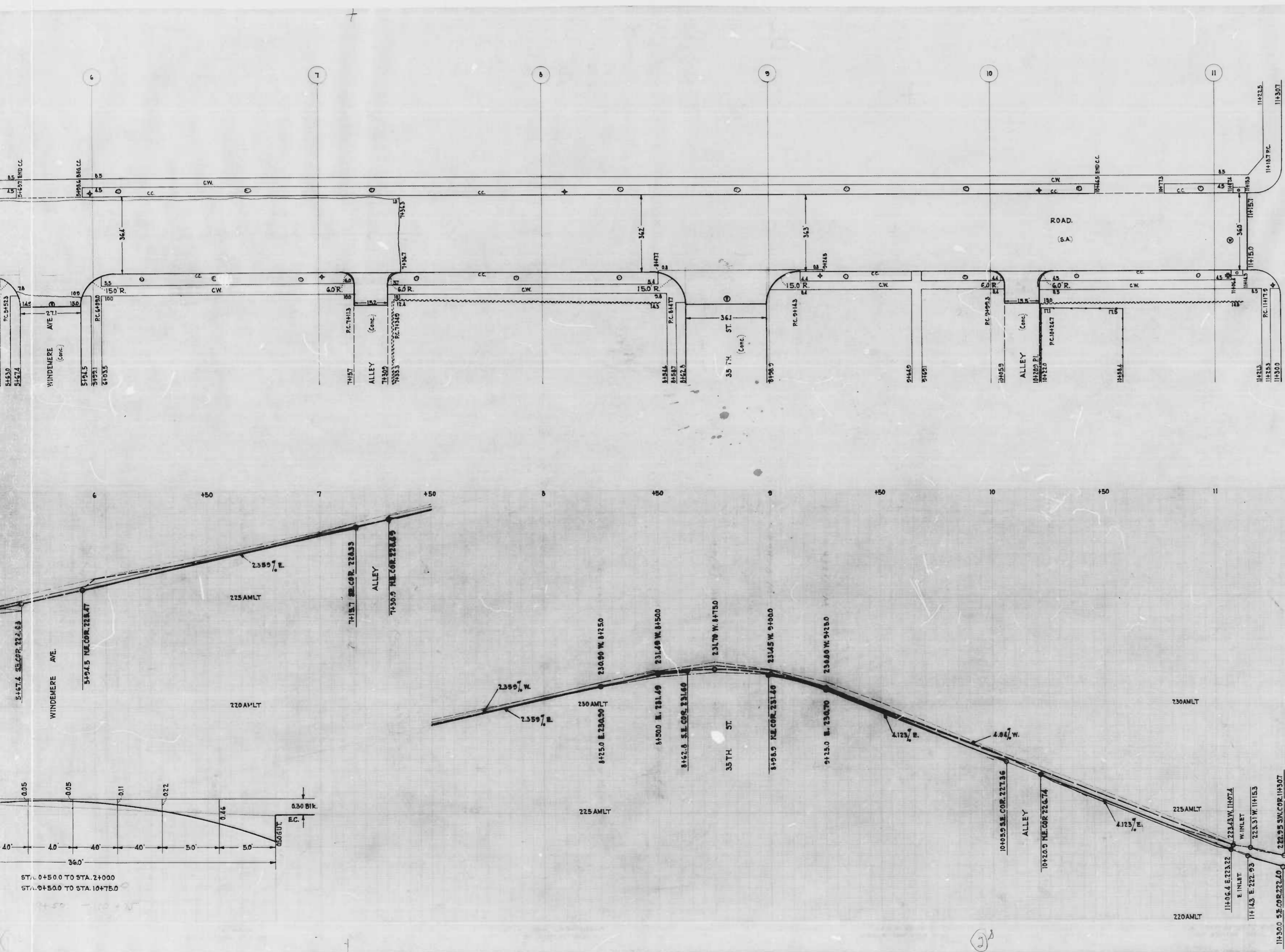


D. Marley
S. L. Burns

10



D. Merley
S. J. Guma



CITY OF BALTIMORE
 DEPARTMENT OF PUBLIC WORKS
 BUREAU OF HIGHWAYS
PLAN & PROFILE
 EDNOR RD. - 33RD. ST. TO 36TH. ST.
 PLAN - 1" = 200' BOOK NO. X-210
 SCALE - HOR. - 1" = 100' DATE - FEB. 27, 1946
 VER. - 1" = 20' CONT. No. 809

APPROVED - *Henry Wisberg* ASSOCIATE ENGINEER
 APPROVED - *W. M. P. Fisher* HIGHWAYS ENGINEER
 APPROVED - *Edward W. Hedrick* ENGR. PLANS & SURVEYS.
 APPROVED - *Robert R. Smith* CHIEF ENGINEER

