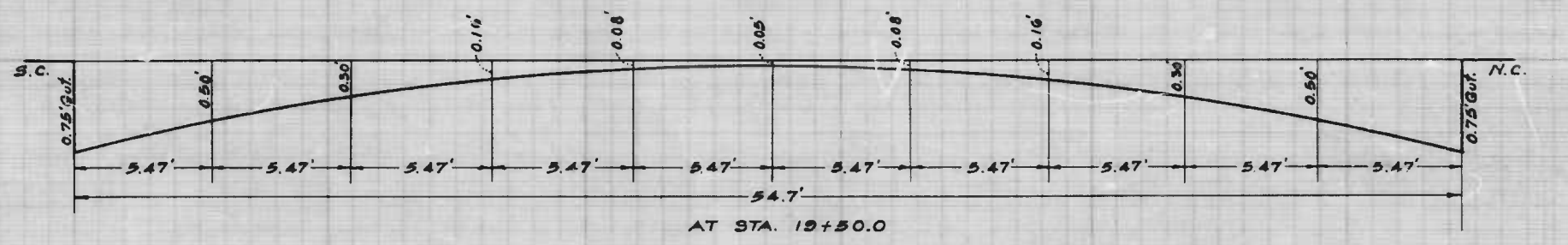
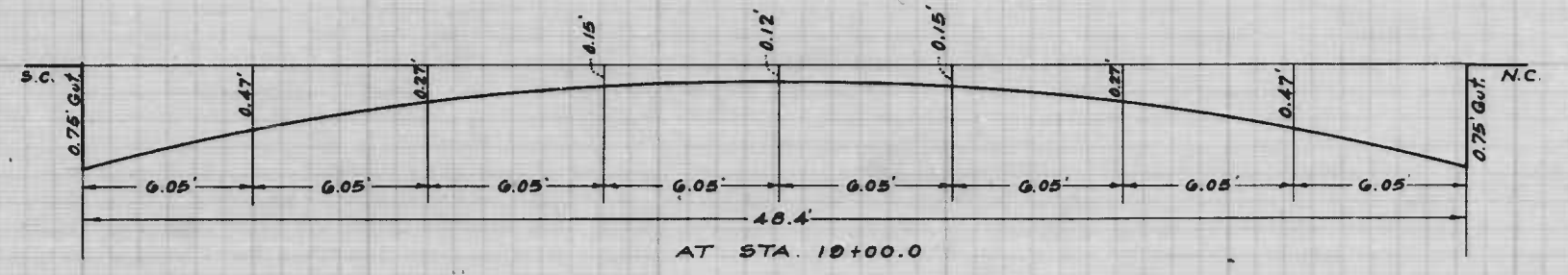
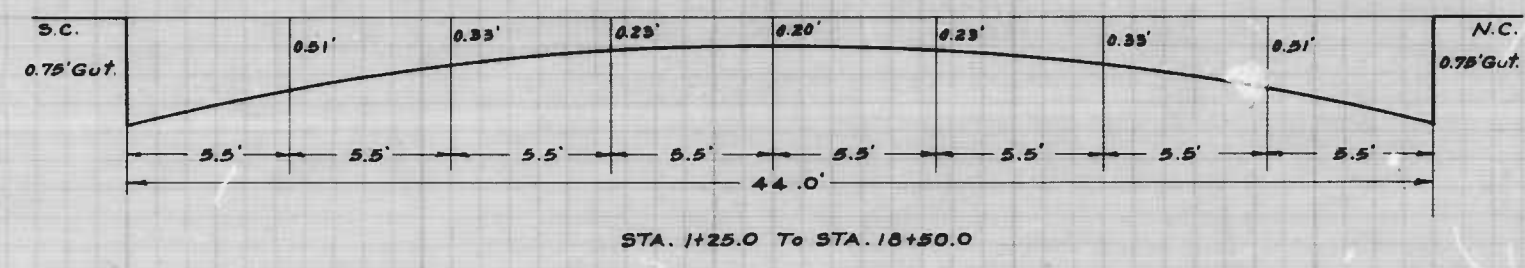
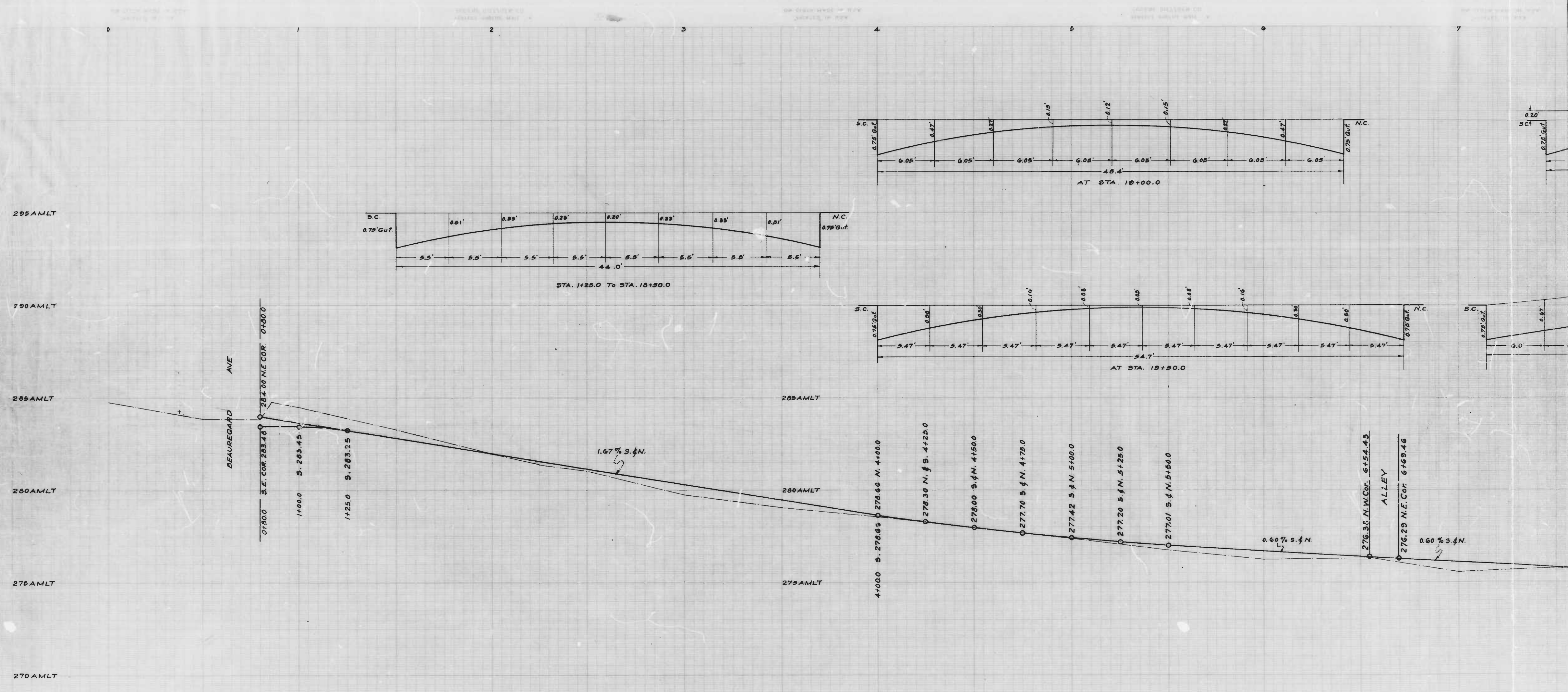


BY *[Signature]*

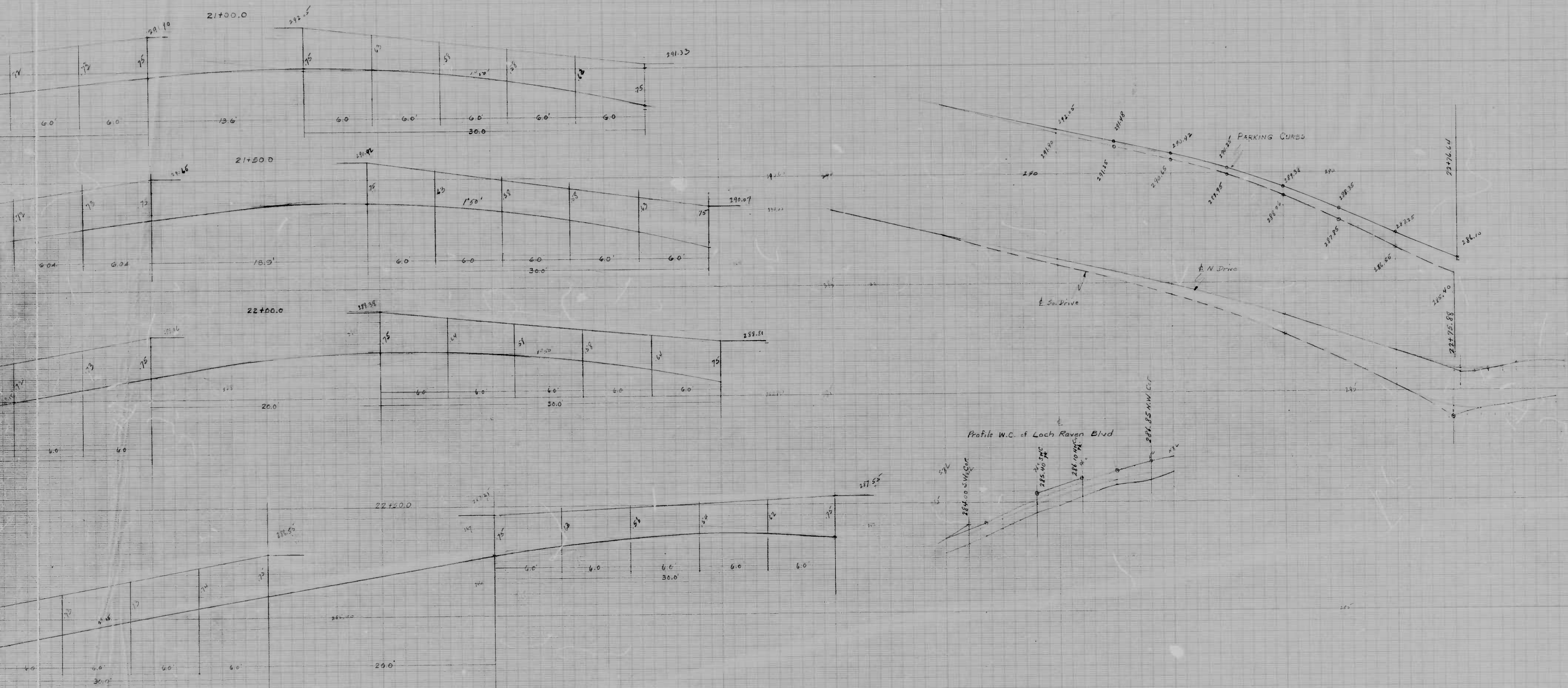
ENGINEER

PRINTED IN U.S.A.

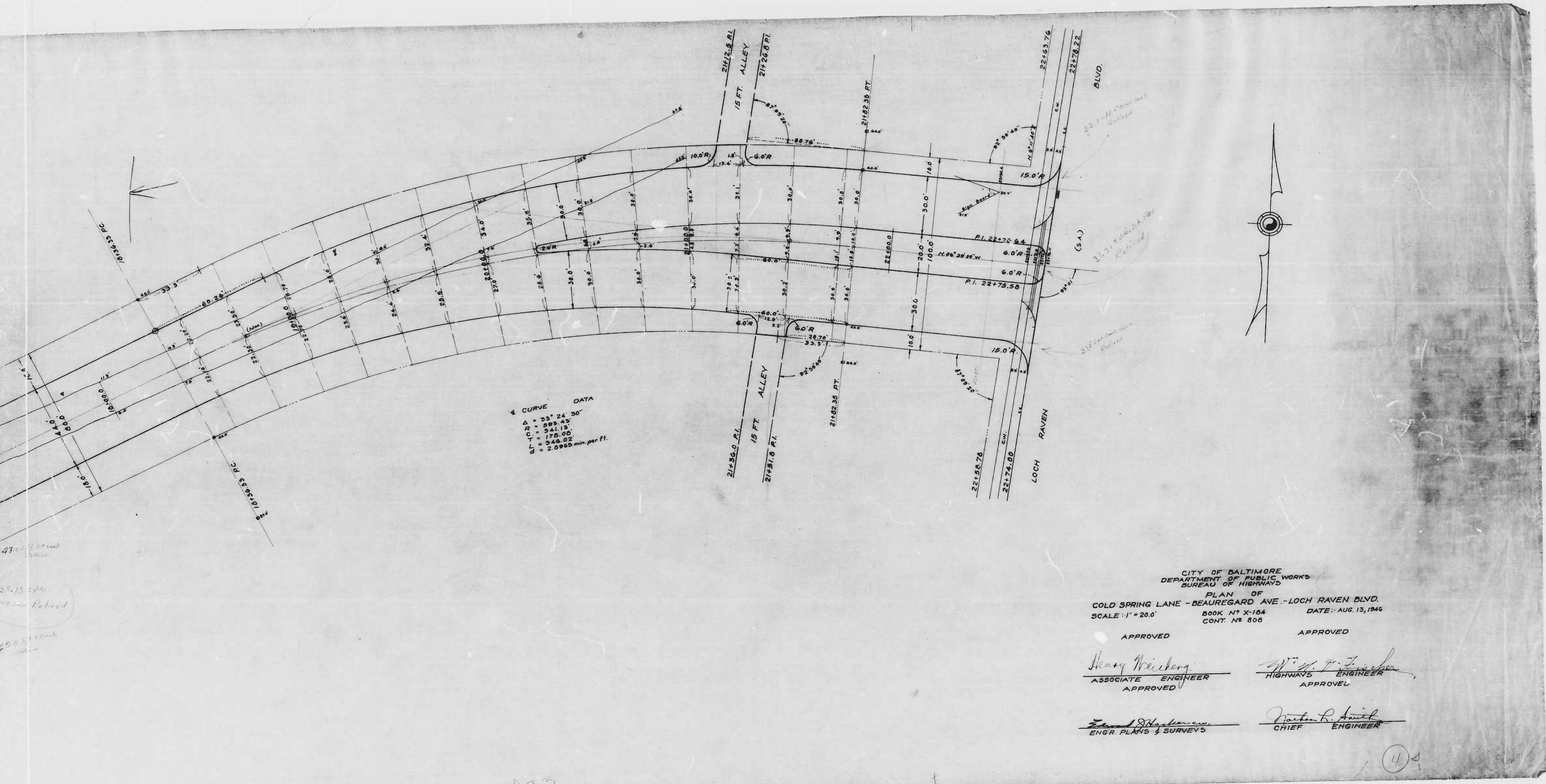
SCALE



DRAWN BY *H. H. Gammell*
 CHECKED BY *S. B. Gammell*
 DATE: FEB 19 1968



PRINTED BY THE U.S. GOVERNMENT PRINTING OFFICE: 1967 O - 348-748



CITY OF BALTIMORE
 DEPARTMENT OF PUBLIC WORKS
 BUREAU OF HIGHWAYS
 PLAN OF
 COLD SPRING LANE - BEAUREGARD AVE. - LOCH RAVEN BLVD.
 SCALE: 1" = 20.0' BOOK N° X-104 DATE: AUG. 13, 1946
 CONT. N° 806

APPROVED

Henry Weisberg
 ASSOCIATE ENGINEER
 APPROVED

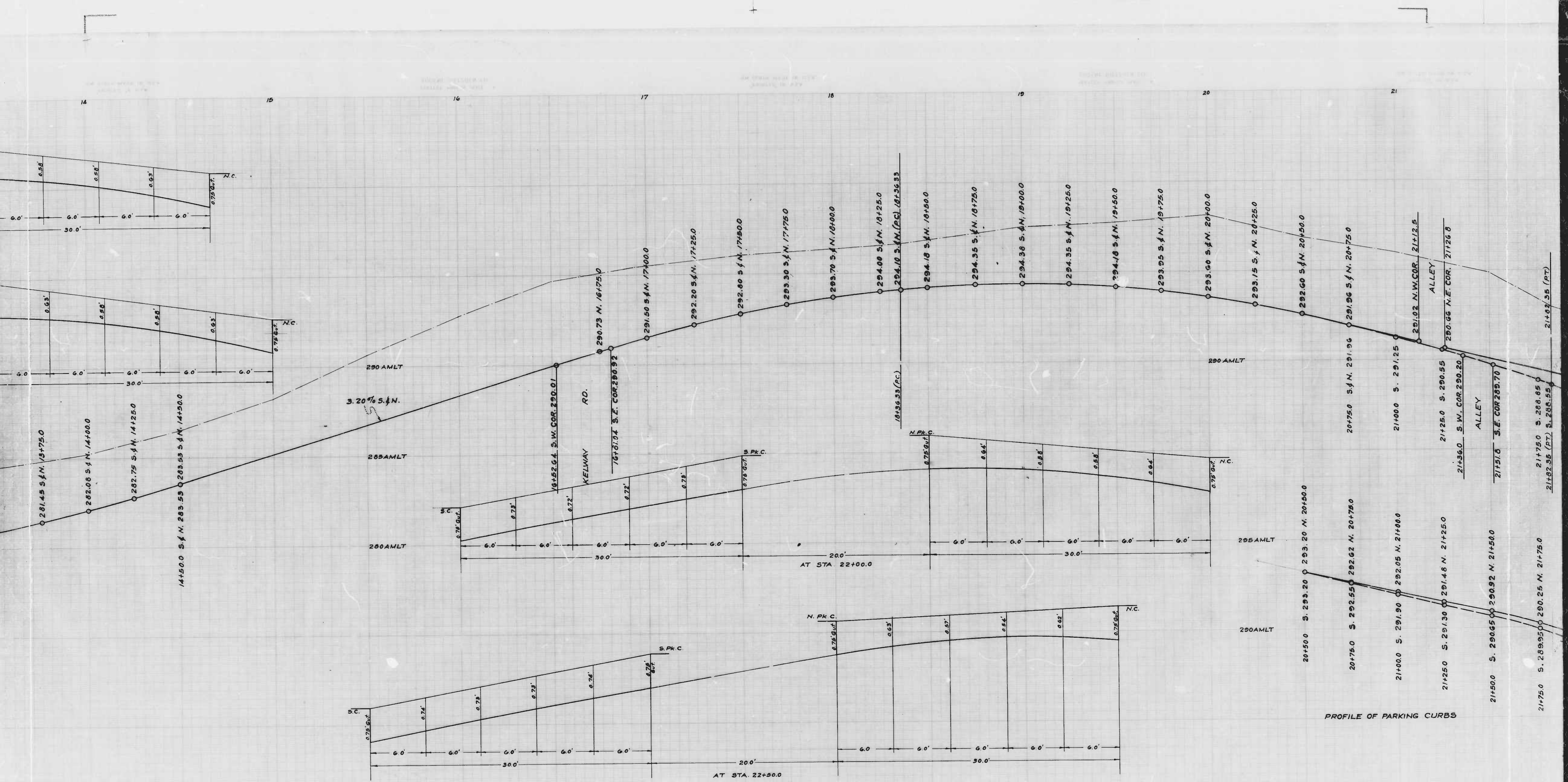
APPROVED

W. J. Fisher
 HIGHWAYS ENGINEER
 APPROVED

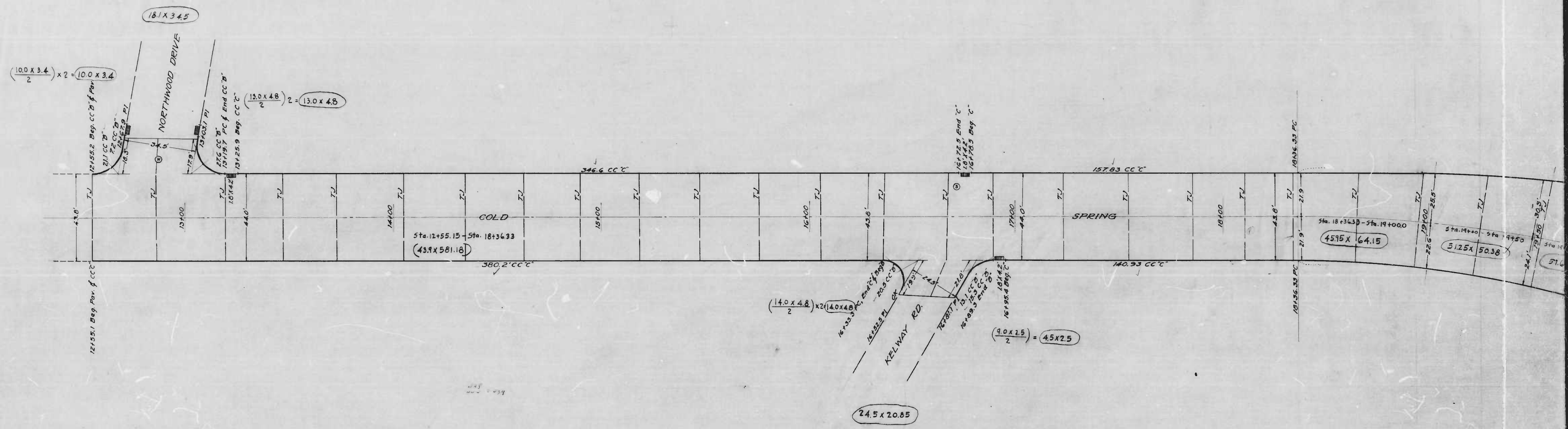
Edward S. Haskins
 ENGR. PLANS & SURVEYS

Walter R. Smith
 CHIEF ENGINEER

4



PROFILE OF PARKING CURBS



J.L. Fowble
 Wm. H. Cowell