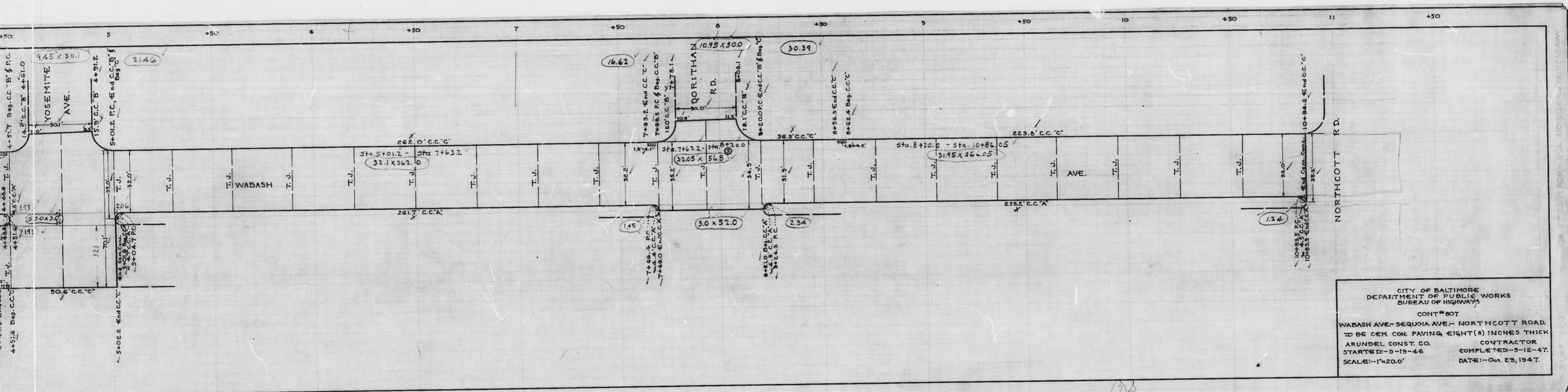


Drawn by: John K. O. Wilson
Checked by: D. Marky



CITY OF BALTIMORE
 DEPARTMENT OF PUBLIC WORKS
 BUREAU OF HIGHWAYS
 CONT # 807
 WABASH AVE. - SEQUOIA AVE. - NORTHCOTT ROAD.
 TO BE CEM. CON. PAVING EIGHT (8) INCHES THICK
 ARUNDEL CONST. CO. CONTRACTOR
 STARTED - 9-13-46 COMPLETED - 3-12-47.
 SCALE: - 1"=20.0' DATE: - Oct. 23, 1947.

370-AMLT.

365-AMLT.

360-AMLT.

355-AMLT.

350-AMLT.

0+13.83 P.C.E. 362.00
0+40.75 S.E. COR. 362.60

SEMOLIA AVE.

0+08.66 N.E. COR. 363.10

0+14.84 P.C. 363.29

SEMOLIA AVE.

363.77 N.W. COR. 0+58.0

364.17 P.C. W. 0+56.88

1.43% E. & W.

1+25 E. 365.01

1+50 E. 365.25

1+75 E. 365.29

2+00 E. 365.10

2+25 E. 364.78

364.98 S.W. COR. 2+18.20

364.60 N.W. COR. 2+35.45

1.784% E. & W.

3+42.35 S.E. COR. 362.73

ALLEY

3+62.35 N.E. COR. 362.38

1.784% E. & W.

4+50 E. 360.82

360.64 S.W. COR. 4+18.00

YOSEMITE AVE.

4+75 E. 360.41

360.18 N.W. COR. 4+31.00

5+00 E. 360.01

NOTE: --
FROM STA. 0+75 TO STA. 10+55.39, ELEVATION OF PARKING
CURBS TO BE 0.1 FT. ABOVE ELEVATION OF E. & W. CURBS.

WABASH AVE.

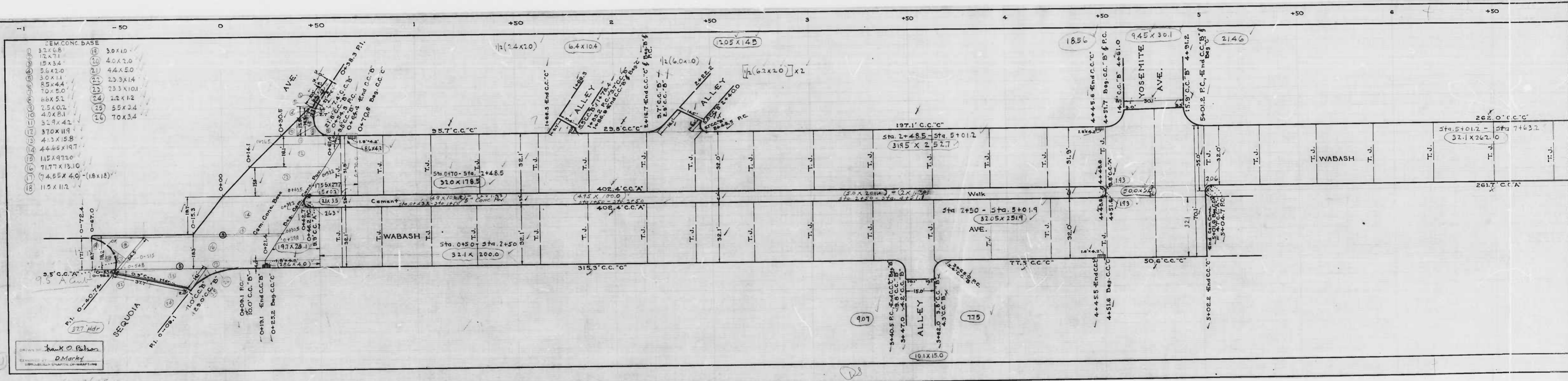
ROSEDALE ST.

AVE.

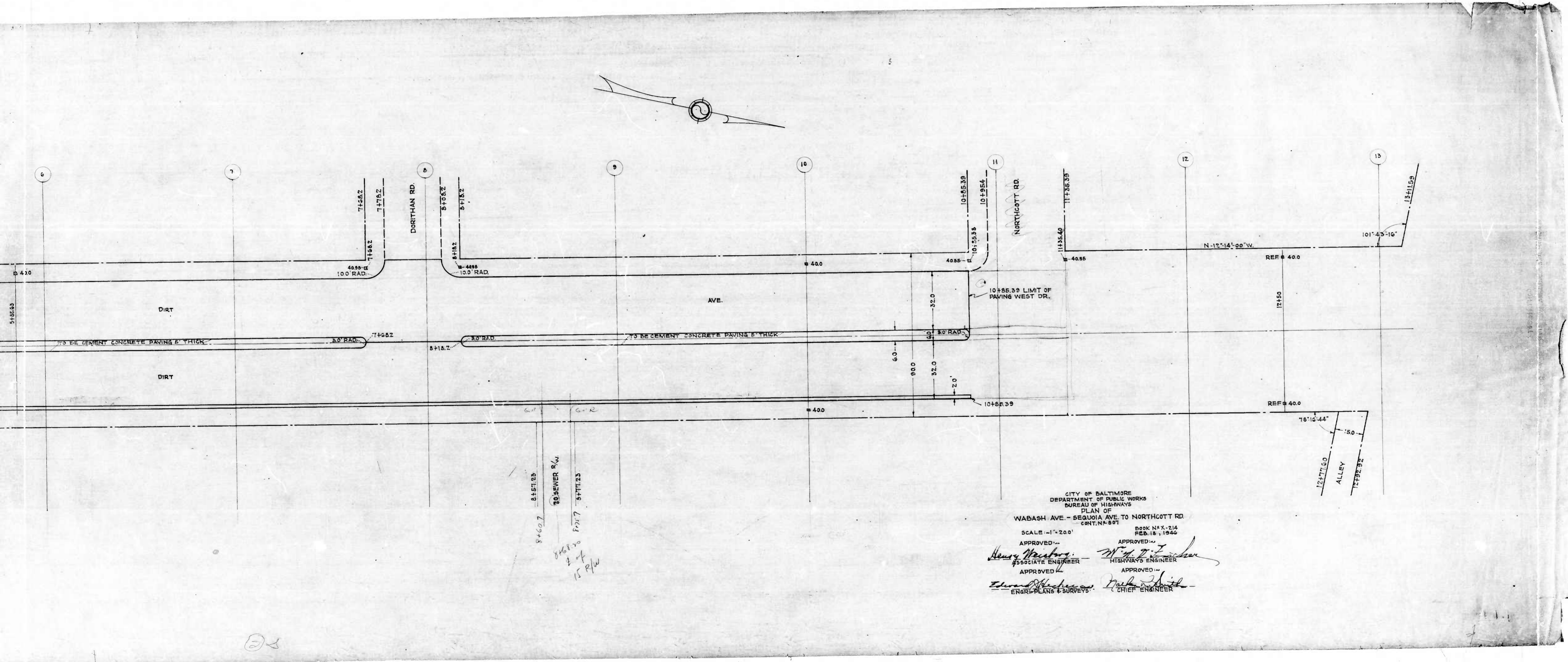
WABASH AVE.

DRAWN BY J.J. HAYDEN
ENGINEER S.L. (Sealed)

DS



DRAWN BY: Frank O. Palmer
 CHECKED BY: D. Markey
 DATE: 11/21/57

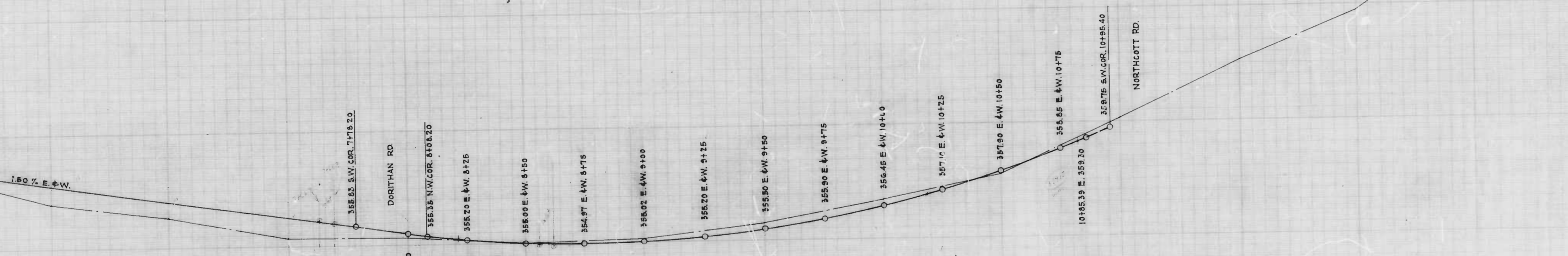
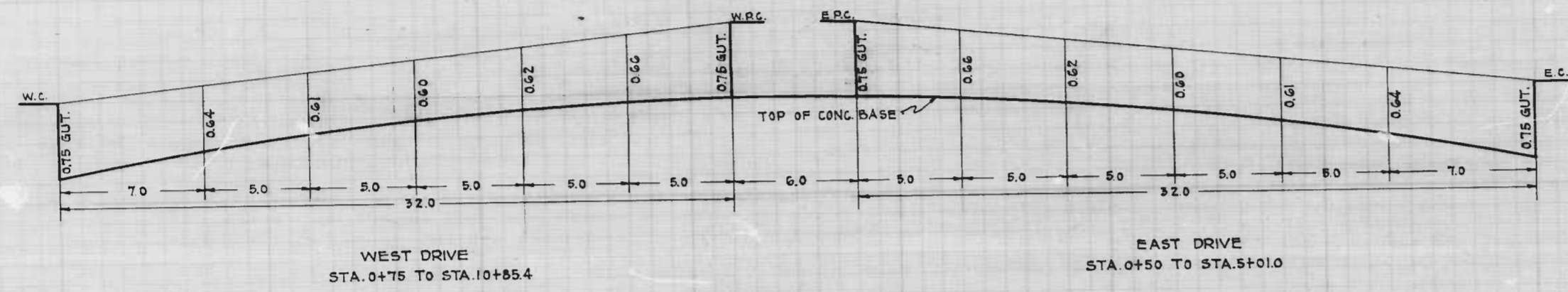


8460.7 8151.25
 TO SEWER R/W
 8468.70
 1/2 of
 15 R/W

CITY OF BALTIMORE
 DEPARTMENT OF PUBLIC WORKS
 BUREAU OF HIGHWAYS
 PLAN OF
 WABASH AVE. - SEQUOIA AVE. TO NORTHCOTT RD.
 CONT. NA-807
 SCALE - 1" = 20.0'
 APPROVED BY: Henry Weisberg, ASSOCIATE ENGINEER
 APPROVED BY: W. J. F. Jackson, HIGHWAY ENGINEER
 APPROVED BY: Edward M. Jackson, ENGR. PLANS & SURVEYS
 APPROVED BY: Paul J. Smith, CHIEF ENGINEER
 BOOK N.Y. 214
 FEB. 18, 1942

25

+50 6 +50 7 +50 8 +50 9 +50 10 +50 11 +50 12 +50 13



CITY OF BALTIMORE
DEPARTMENT OF PUBLIC WORKS
BUREAU OF HIGHWAYS
PROFILE OF
WABASH AVE. - SEQUOIA AVE. TO NORTHCOTT RD.
CONT. NO. 807

Book No. X-24
FEB. 25, 1946

SCALES - HOR. 1" = 20.0'
VER. 1" = 2.0'

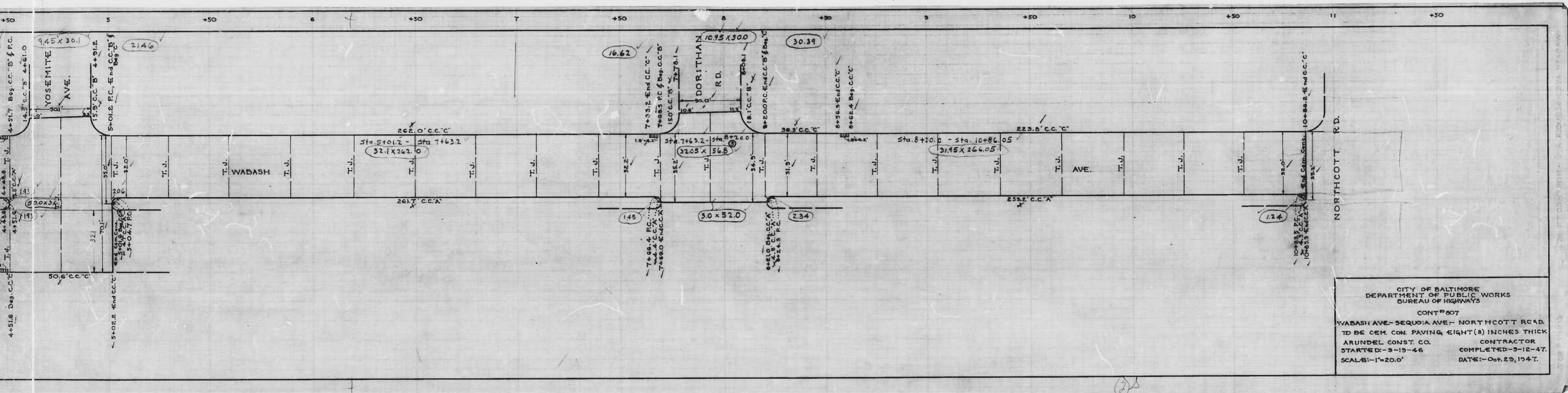
APPROVED: *Henry W. ...*
ASSOCIATE ENGINEER

APPROVED: *W. ...*
HIGHWAYS ENGINEER

APPROVED: *...*
ENGR. PLANS & SURVEYS

APPROVED: *...*
CHIEF ENGINEER

2



CITY OF BALTIMORE
 DEPARTMENT OF PUBLIC WORKS
 BUREAU OF HIGHWAYS
 CONT # 807
 WABASH AVE.- SEQUOIA AVE.- NORTHCOTT ROAD.
 TO BE CEM. CON. PAVING EIGHT (8) INCHES THICK
 ARUNDEL CONST. CO. CONTRACTOR
 STARTED-9-19-46 COMPLETED-9-12-47
 SCALE-1"=20.0' DATE-1-Oct. 29, 1947.