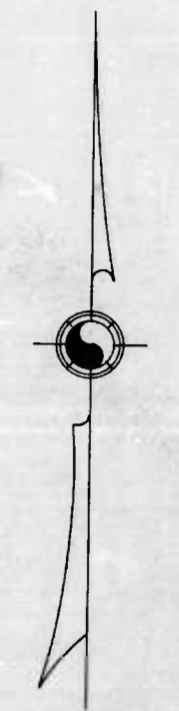
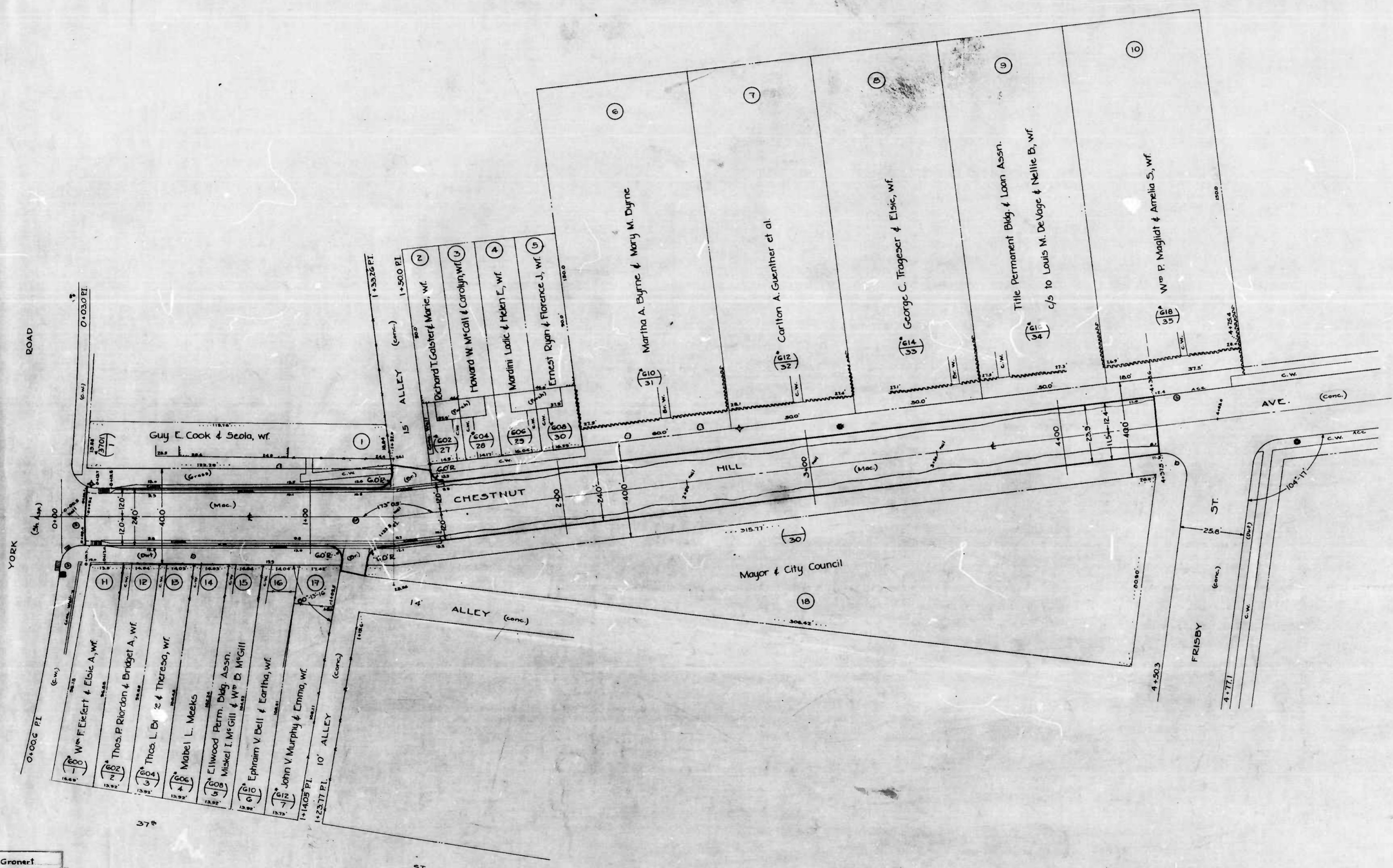


WARD 9

SECTION 1

BLOCK 3976-A



(N) PLAT N°  
 (H) HOUSE OR DEV. LOT N°  
 (A) APPEAL TAX COURT LOT N°  
 WARD SECTIONS - 9, 20  
 BLOCKS - 3976-A, 4059-B

FILED 3/28/46  
 BUREAU OF HIGHWAYS  
 PER [Signature]

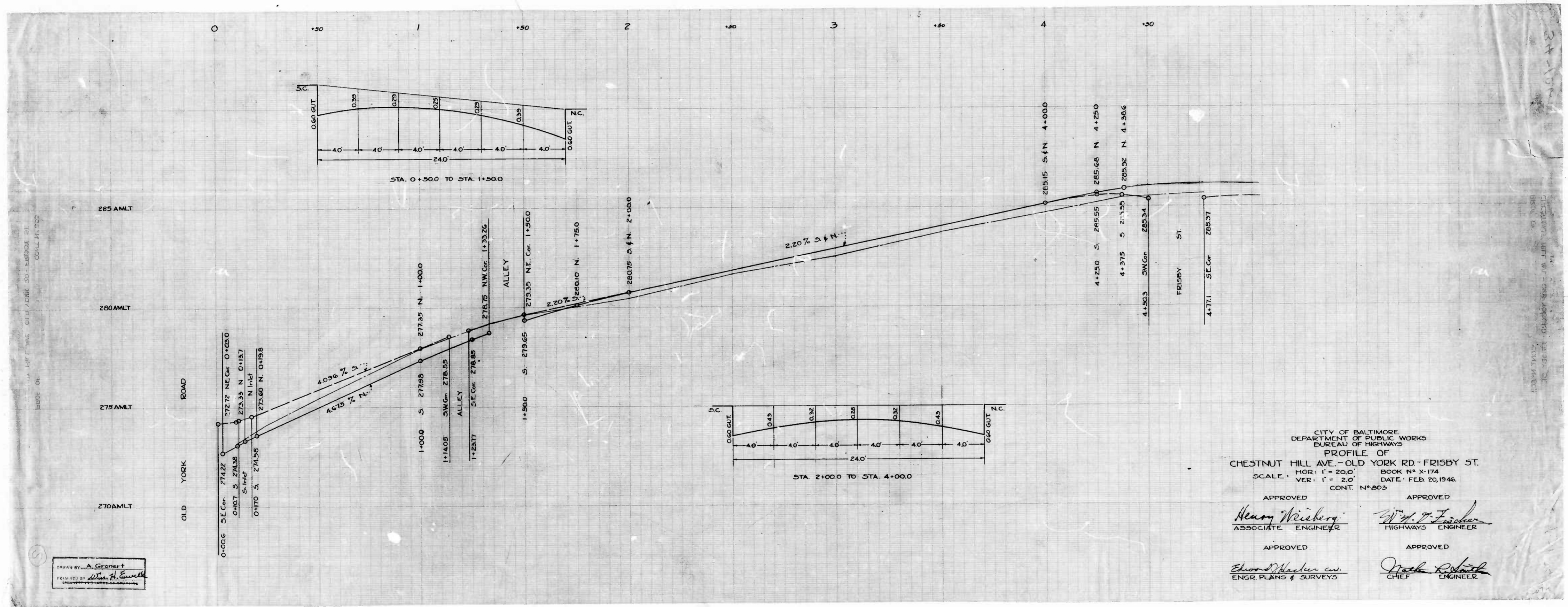
CITY OF BALTIMORE  
 DEPARTMENT OF PUBLIC WORKS  
 BUREAU OF HIGHWAYS  
 ASSESSMENT PLAT N° 583-A  
 CHESTNUT HILL AVE - OLD YORK RD - FRISBY ST.  
 SCALE: 1" = 200'  
 CONT. N° 803  
 BOOK N° X-174  
 DATE: FEB. 20, 1946.  
 APPROVED [Signature] ASSOCIATE ENGINEER  
 APPROVED [Signature] HIGHWAYS ENGINEER  
 APPROVED [Signature] ENGR. PLANS & SURVEYS  
 APPROVED [Signature] CHIEF ENGINEER

DRAWN BY A. Gronert  
 CHECKED BY Wm. H. Kunkel

WARD 9

SECTION 20

BLOCK 4059-B



CITY OF BALTIMORE  
 DEPARTMENT OF PUBLIC WORKS  
 BUREAU OF HIGHWAYS

PROFILE OF  
 CHESTNUT HILL AVE. - OLD YORK RD - FRISBY ST.

SCALE: HOR: 1" = 20.0'  
 VER: 1" = 2.0'

DATE: FEB 20, 1946  
 CONT: N° 803

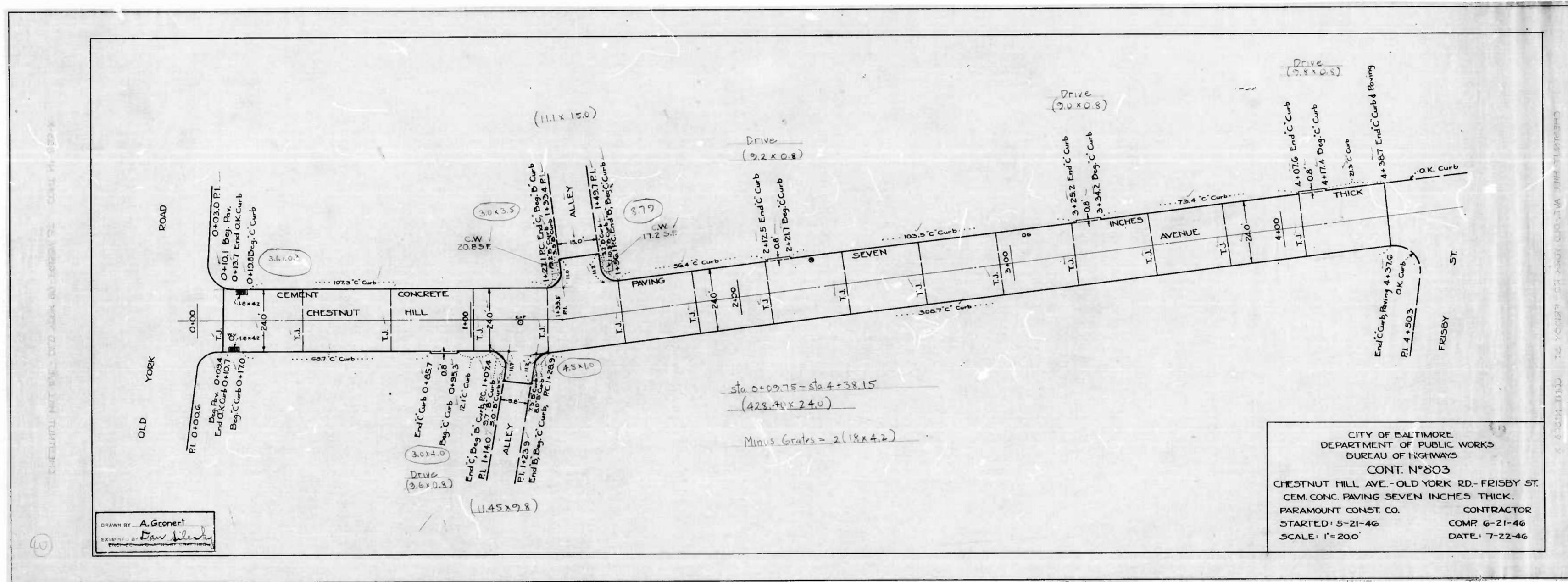
APPROVED: *Henry Weisberg*  
 ASSOCIATE ENGINEER

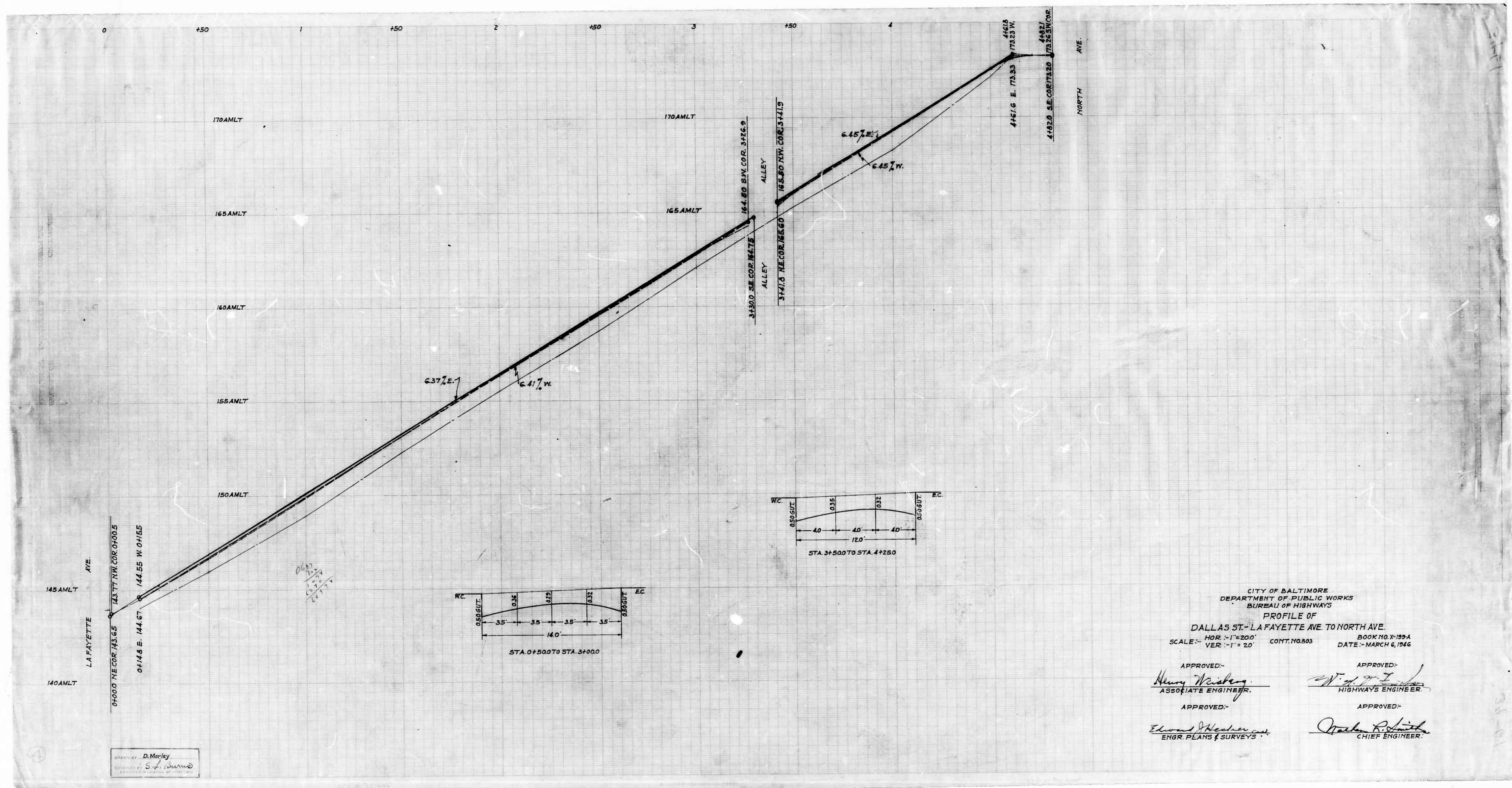
APPROVED: *W. J. Fisher*  
 HIGHWAYS ENGINEER

APPROVED: *Edward H. Baker*  
 ENGR. PLANS & SURVEYS

APPROVED: *W. J. Fisher*  
 CHIEF ENGINEER

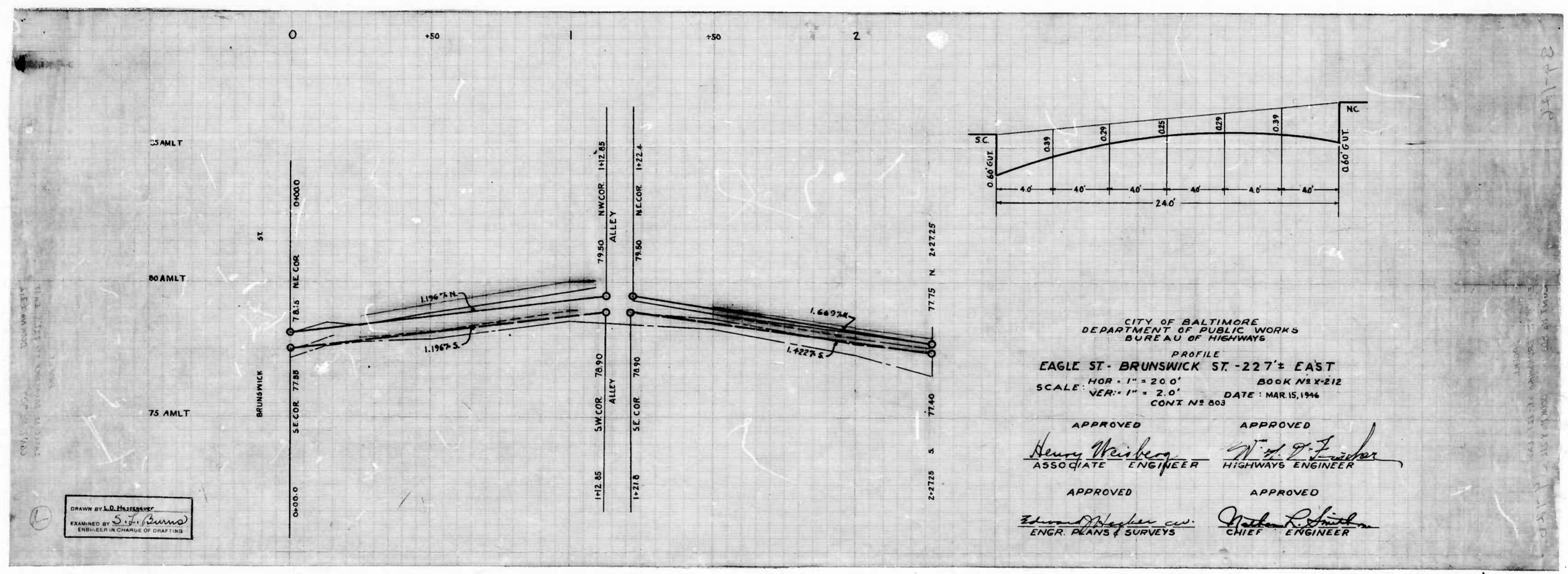
DRAWN BY: A. Gronert  
 CHECKED BY: *Wm. H. Gwilt*

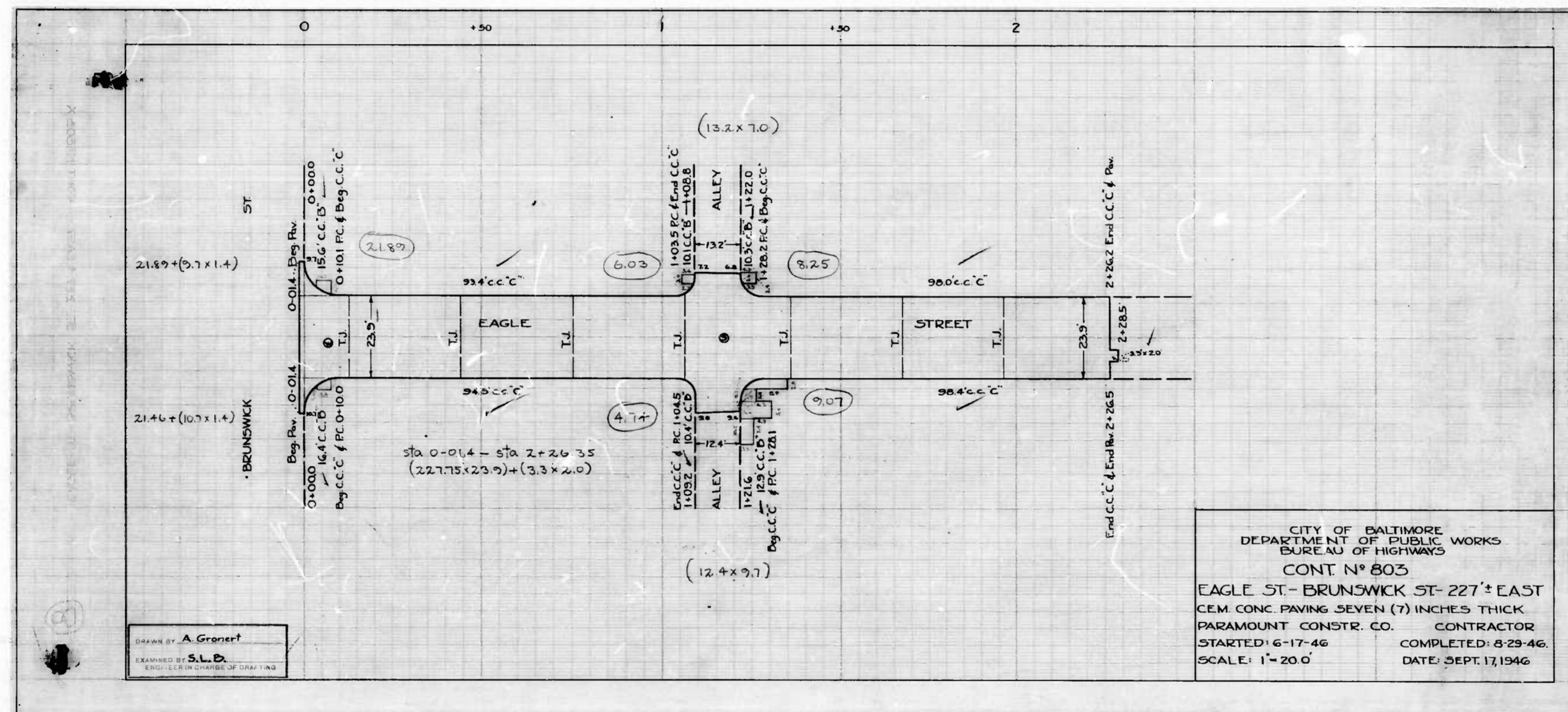








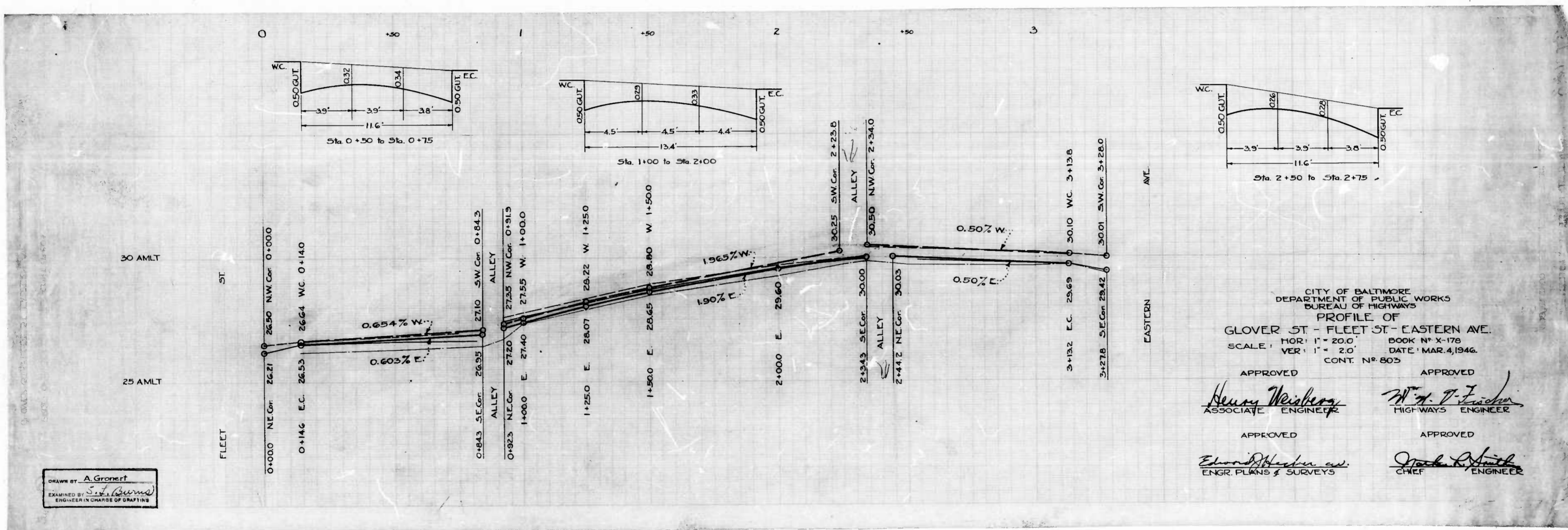




DRAWN BY **A. Gronert**  
 EXAMINED BY **S.L.D.**  
SEAL OF PROFESSIONAL ENGINEER

CITY OF BALTIMORE  
 DEPARTMENT OF PUBLIC WORKS  
 BUREAU OF HIGHWAYS  
 CONT N° 803  
 EAGLE ST - BRUNSWICK ST - 227'± EAST  
 CEM. CONC. PAVING SEVEN (7) INCHES THICK  
 PARAMOUNT CONSTR. CO. CONTRACTOR  
 STARTED: 6-17-46 COMPLETED: 8-29-46  
 SCALE: 1" = 20.0' DATE: SEPT. 17, 1946

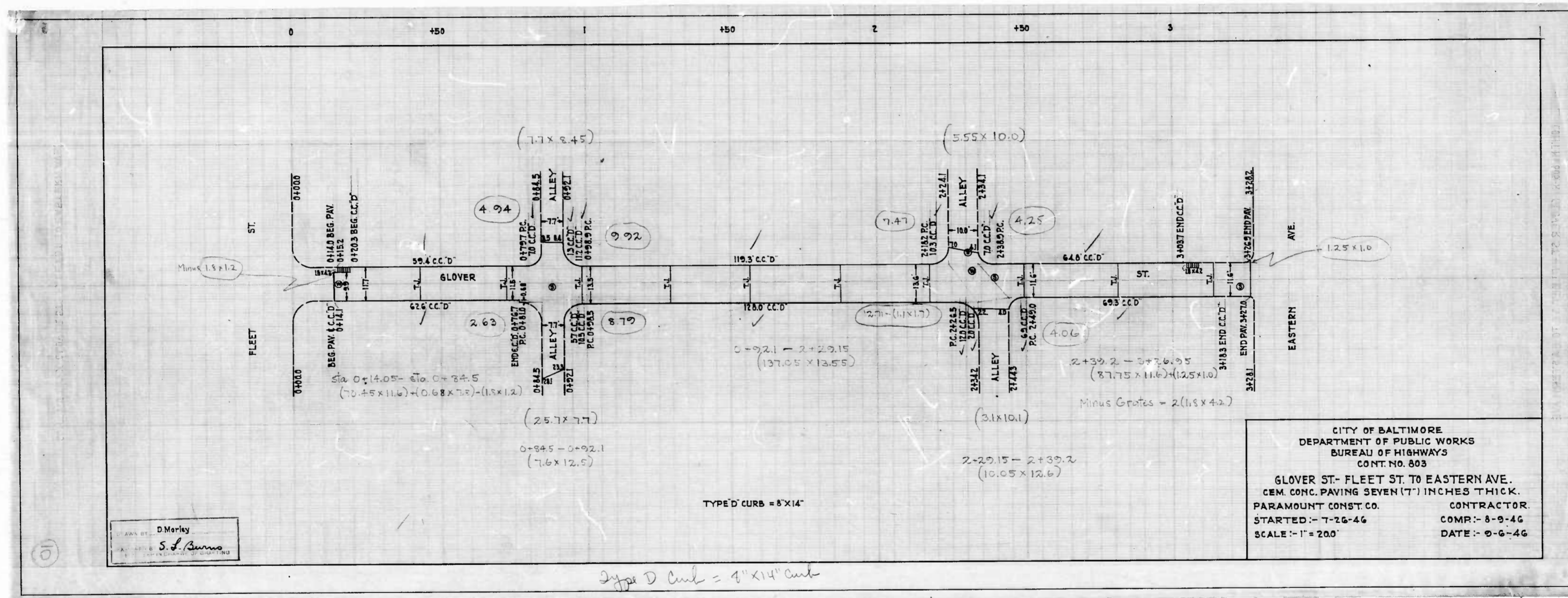


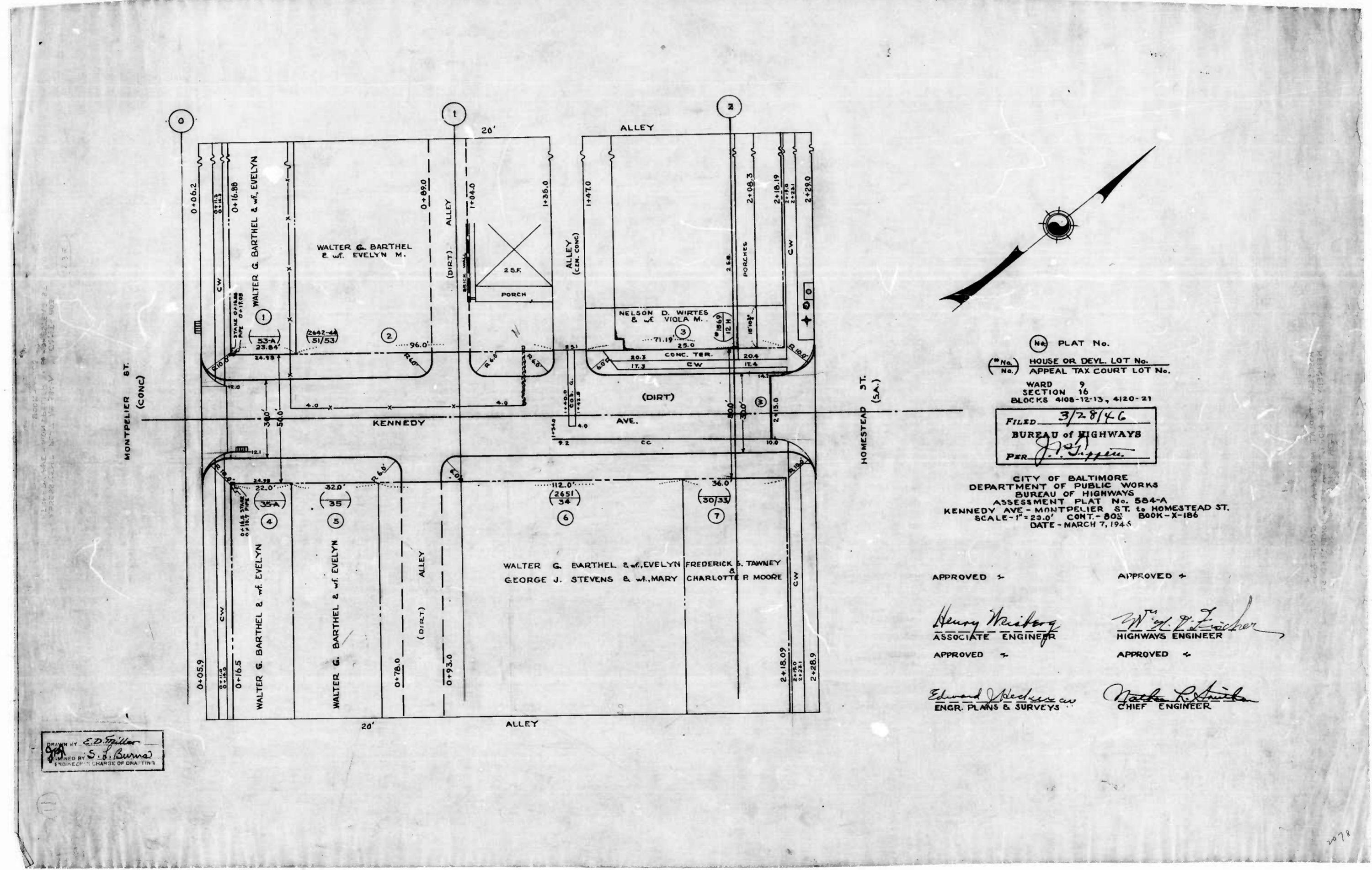


DRAWN BY A. Groper  
 EXAMINED BY S. J. Brown  
 ENGINEER IN CHARGE OF DRAFTING

CITY OF BALTIMORE  
 DEPARTMENT OF PUBLIC WORKS  
 BUREAU OF HIGHWAYS  
 PROFILE OF  
 GLOVER ST - FLEET ST - EASTERN AVE.  
 SCALE: HOR: 1" = 20.0'    BOOK N° X-178  
 VER: 1" = 20'    DATE: MAR. 4, 1946  
 CONT. N° 803

APPROVED Henry Weisberg ASSOCIATE ENGINEER  
 APPROVED W. H. F. Fisher HIGHWAYS ENGINEER  
 APPROVED Edward H. ... ENGR. PLANS & SURVEYS  
 APPROVED Charles ... CHIEF ENGINEER





(No.) PLAT No.  
 (H.No.) HOUSE OR DEVL. LOT No.  
 (A.No.) APPEAL TAX COURT LOT No.  
 WARD 9  
 SECTION 16  
 BLOCKS 808-12-13, 4120-21  
 FILED 3/28/46  
 BUREAU OF HIGHWAYS  
 PER J. J. [Signature]

CITY OF BALTIMORE  
 DEPARTMENT OF PUBLIC WORKS  
 BUREAU OF HIGHWAYS  
 ASSESSMENT PLAT No. 504-A  
 KENNEDY AVE - MONTEPELIER ST. to HOMESTEAD ST.  
 SCALE - 1" = 25.0' CONT. - 805 500K-X-186  
 DATE - MARCH 7, 1945

APPROVED -

*Henry Weisberg*  
 ASSOCIATE ENGINEER

APPROVED +

*Edward Weisberg*  
 ENGR. PLANS & SURVEYS

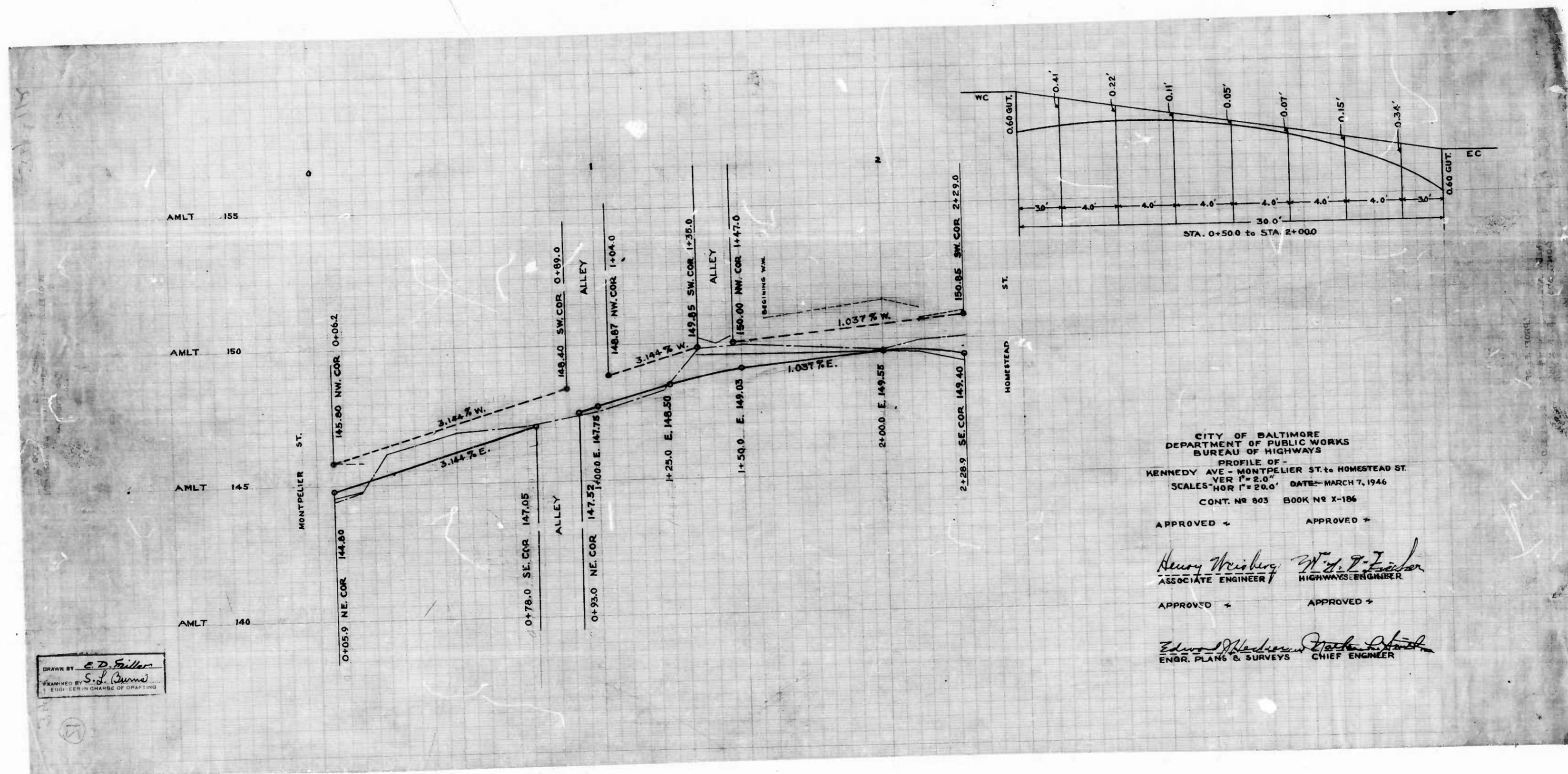
APPROVED +

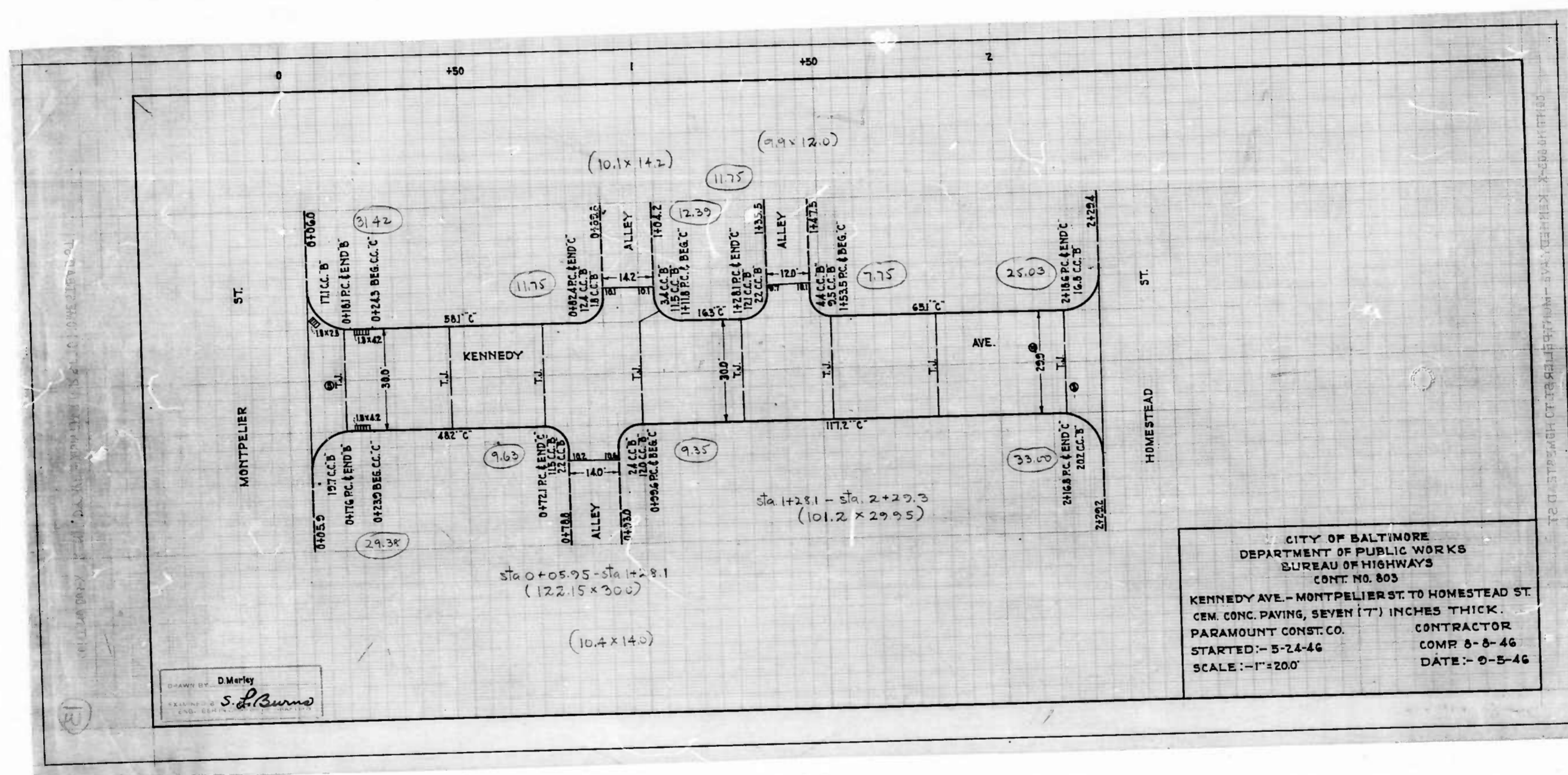
*Wm. P. Fisher*  
 HIGHWAYS ENGINEER

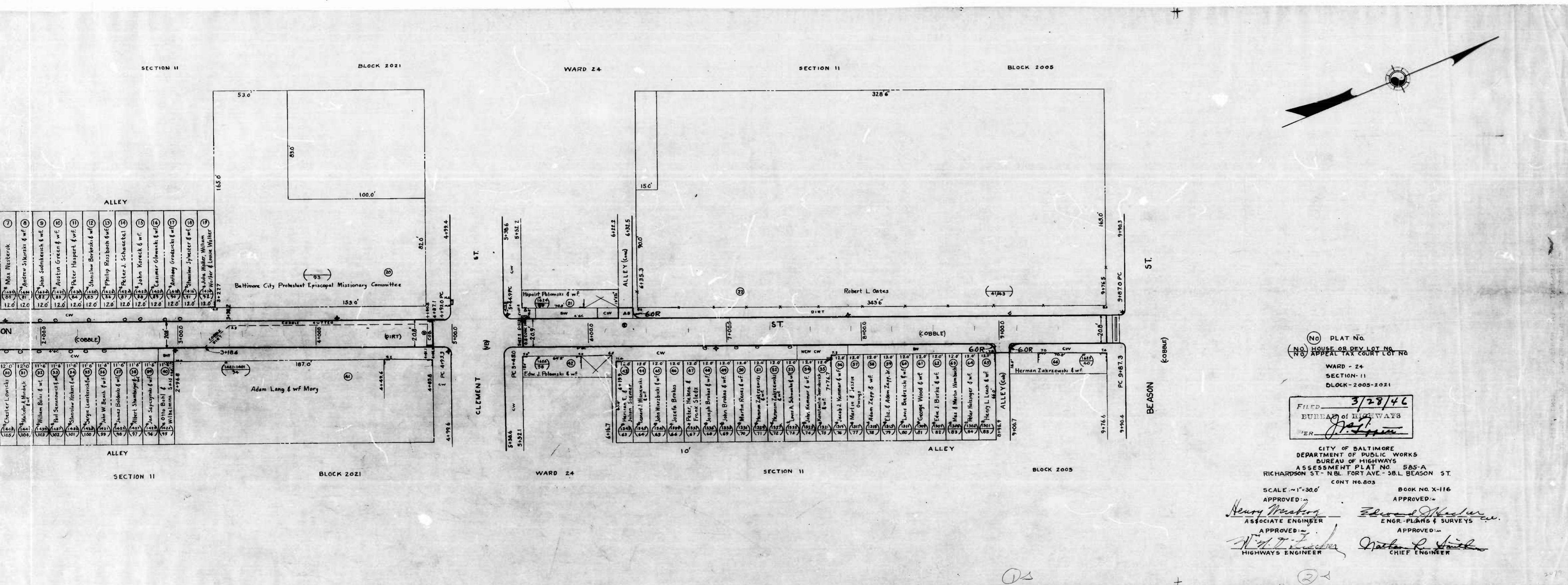
APPROVED -

*Nathan [Signature]*  
 CHIEF ENGINEER

BY *E. D. [Signature]*  
 CHECKED BY *S. B. [Signature]*  
 ENGINEER IN CHARGE OF DIVISION



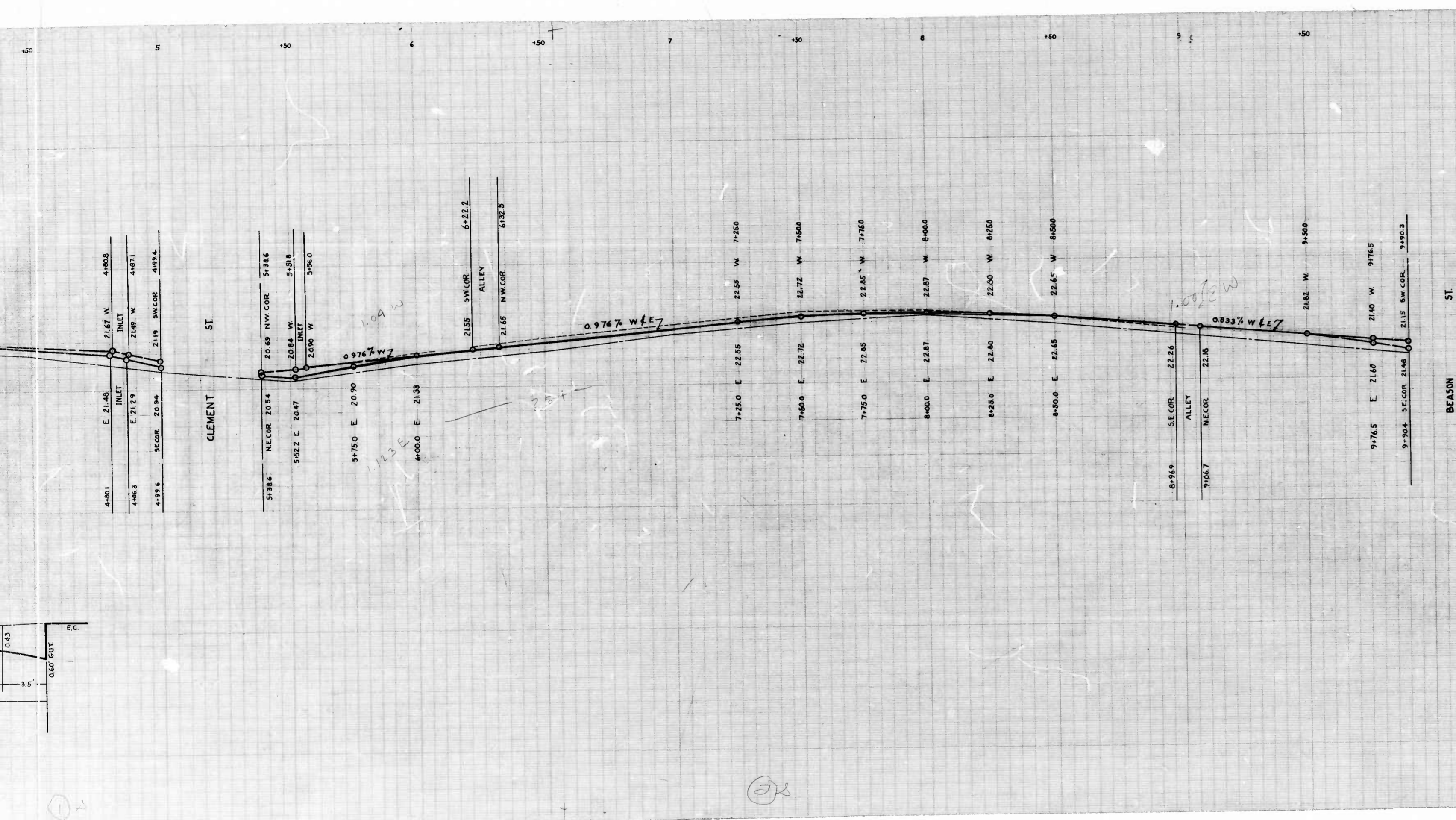




(NO) PLAT NO.  
 (NO) HOUSE OR DEY LOT NO.  
 (NO) APPEAL TAX COURT LOT NO.  
 WARD - 24  
 SECTION - II  
 BLOCK - 2005-2021  
 FILED 3/28/46  
 BUREAU OF HIGHWAYS  
 PER [Signature]

CITY OF BALTIMORE  
 DEPARTMENT OF PUBLIC WORKS  
 BUREAU OF HIGHWAYS  
 ASSESSMENT PLAT NO. 505-A  
 RICHARDSON ST - NBL FORT AVE - SBL BEASON ST.  
 CONT NO. 803

SCALE - 1" = 30'  
 APPROVED: [Signature] ASSOCIATE ENGINEER  
 APPROVED: [Signature] HIGHWAYS ENGINEER  
 BOOK NO. X-116  
 APPROVED: [Signature] ENGR. PLANS & SURVEYS  
 APPROVED: [Signature] CHIEF ENGINEER



CITY OF BALTIMORE  
 DEPARTMENT OF PUBLIC WORKS  
 BUREAU OF HIGHWAYS

PROFILE  
 RICHARDSON ST - NBL FORT AVE. - SBL BEASON ST.

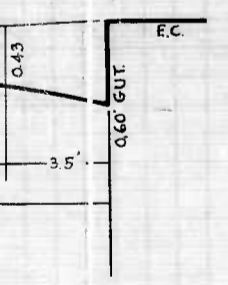
SCALE: HOR. 1" = 20.0' BOOK N° X-116  
 VER. 1" = 2.0' DATE: APRIL 1, 1946  
 CONT. N° 803

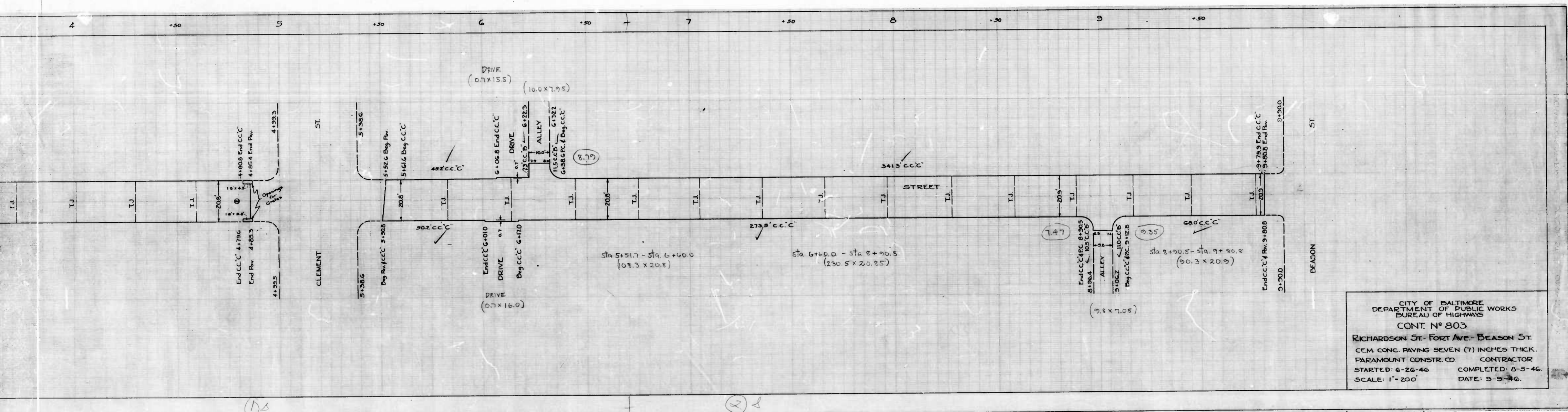
APPROVED: *Henry Weisberg*  
 ASSOCIATE ENGINEER

APPROVED: *W. A. P. Fisher*  
 HIGHWAYS ENGINEER

APPROVED: *Edmond J. Macken*  
 ENGR. - PLANS & SURVEYS

APPROVED: *Charles R. Smith*  
 CHIEF ENGINEER





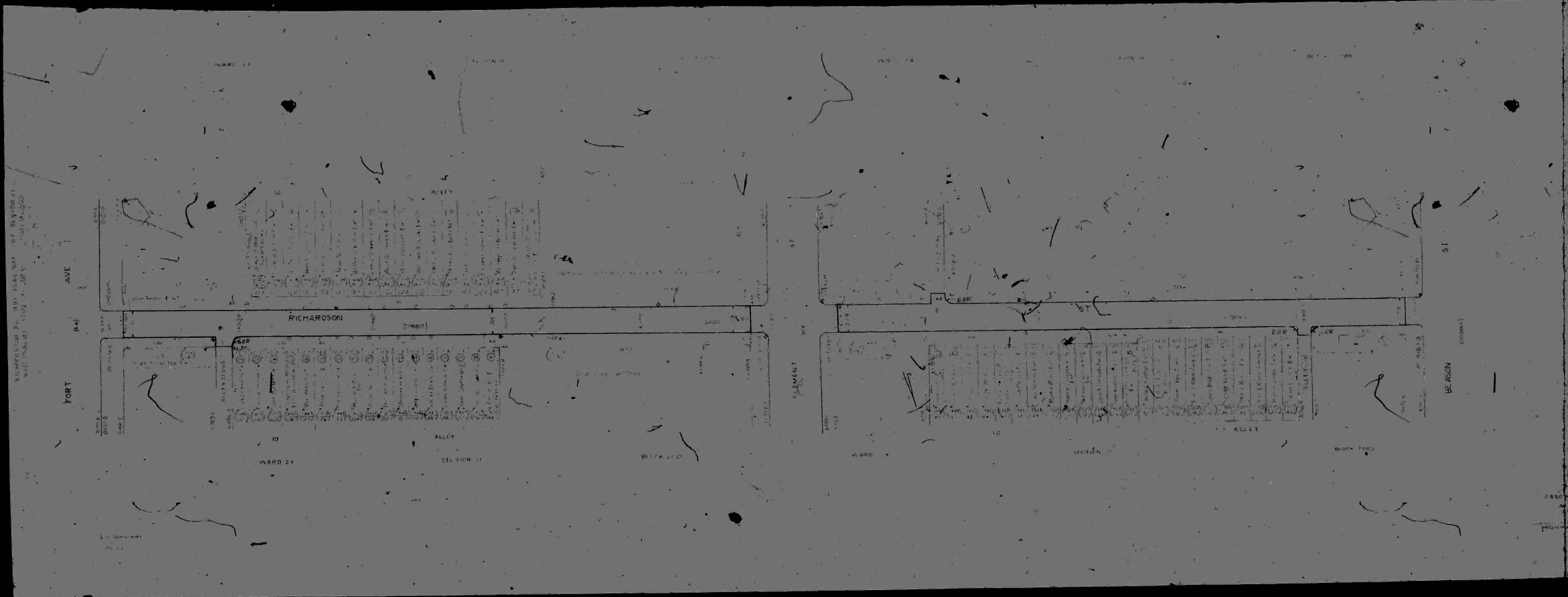
CITY OF BALTIMORE  
 DEPARTMENT OF PUBLIC WORKS  
 BUREAU OF HIGHWAYS  
 CONT. N° 803  
 RICHARDSON ST.-FORT AVE.-BEASON ST.  
 CEM. CONC. PAVING SEVEN (7) INCHES THICK.  
 PARAMOUNT CONSTR. CO. CONTRACTOR  
 STARTED: 6-26-46 COMPLETED: 8-5-46  
 SCALE: 1" = 200' DATE: 9-5-46



803

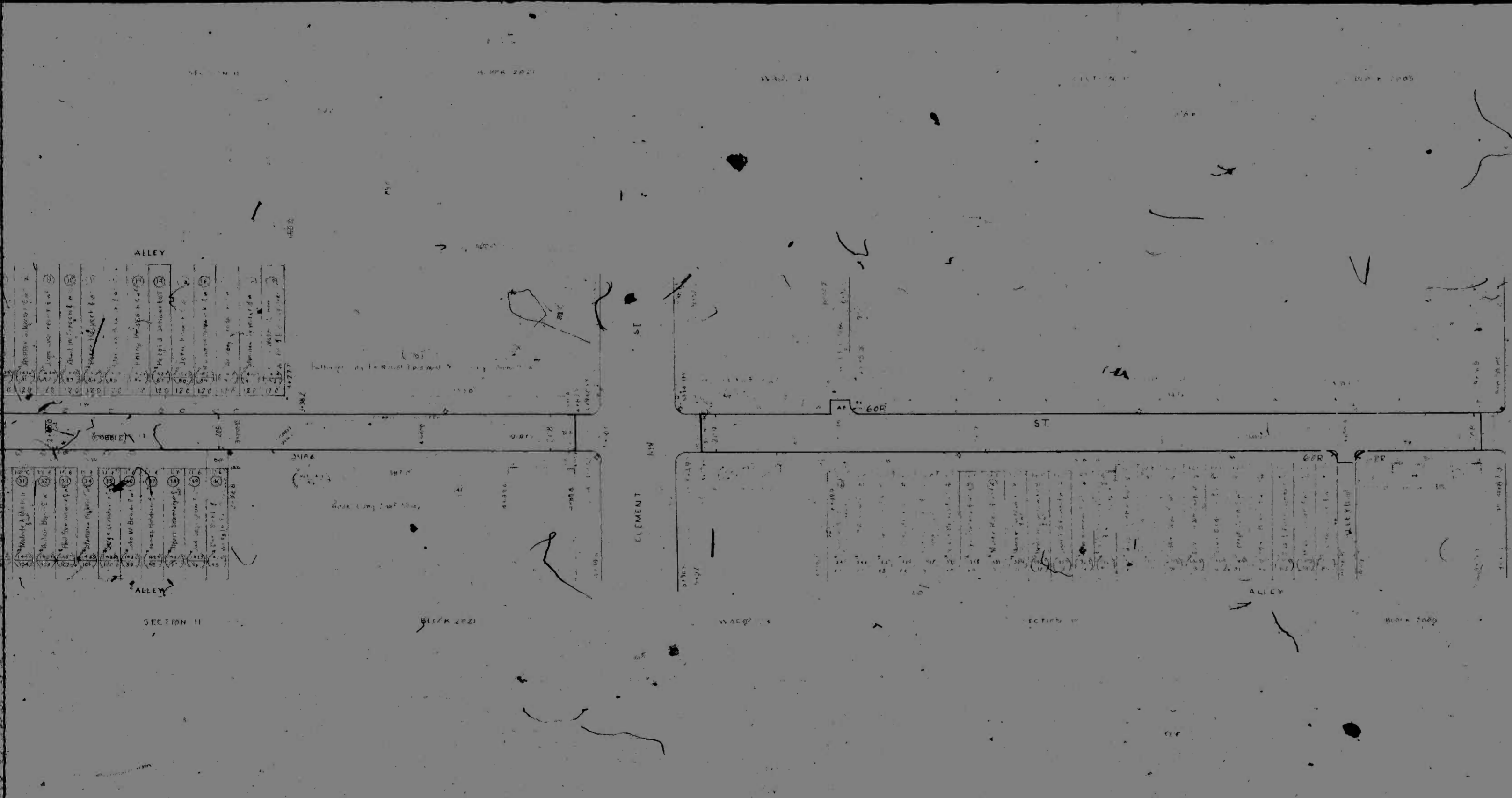
RATIO - 24

15



NUMBERED PL. 001 ALAS WAF DIST BLK 001 ST  
 WARD 24 1121 1122 1123 1124 1125

DEPT. OF  
 HIGHWAYS  
 ENGINEER  
 APPROVED  
 ASSOCIATE ENGINEER  
 APPROVED  
 WARD 24  
 RICHARDSON ST - 15  
 BUREAU OF  
 ASSESSMENT  
 DEPARTMENT  
 OF HIGHWAYS



PLAT NO.  
 DEPARTMENT OF PUBLIC WORKS  
 BUREAU OF HIGHWAYS  
 ASSESSMENT PLAT NO. 545 A  
 NE HARISON ST. NW. 1047 AVE. SBL. RTA-ON '81

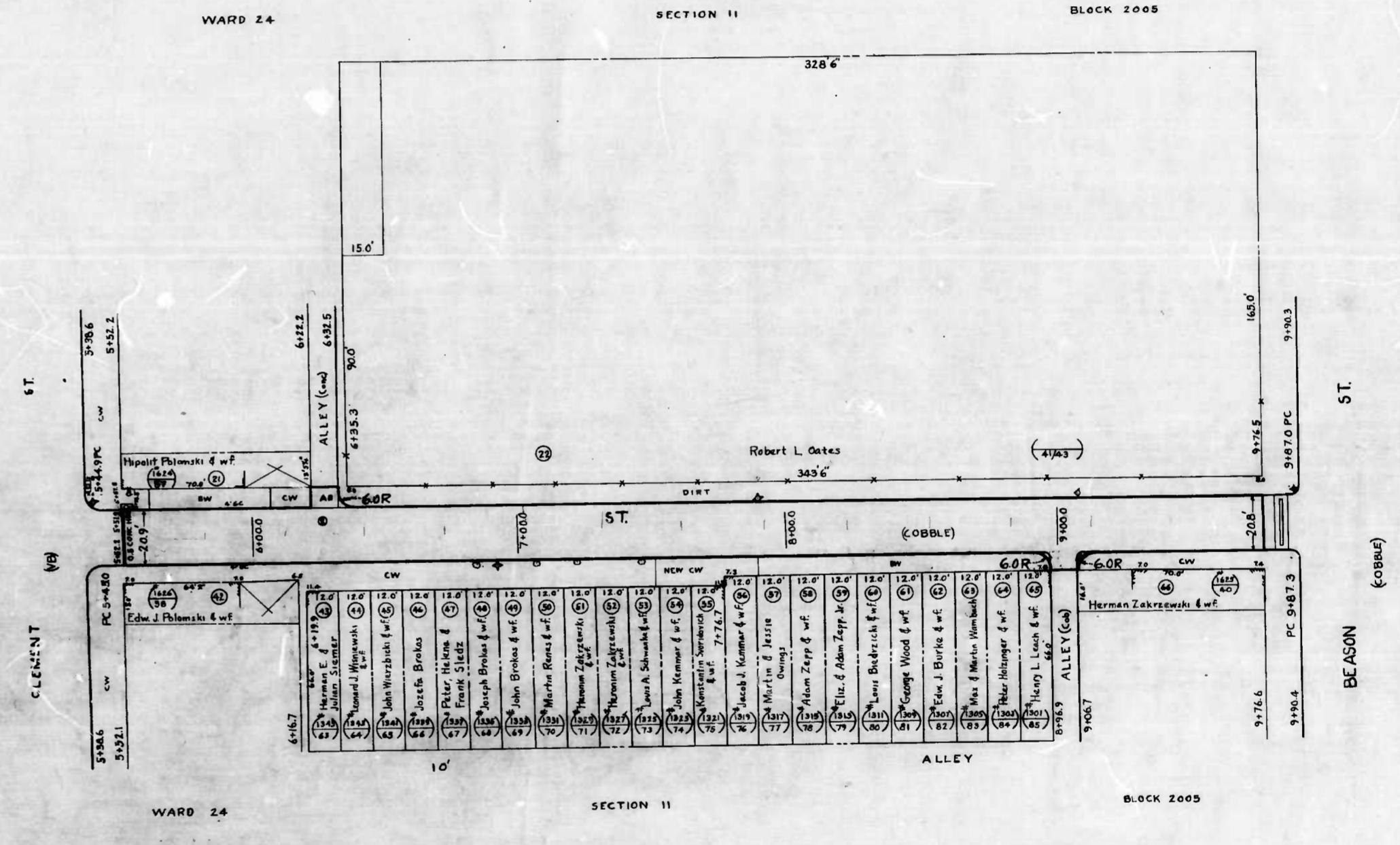
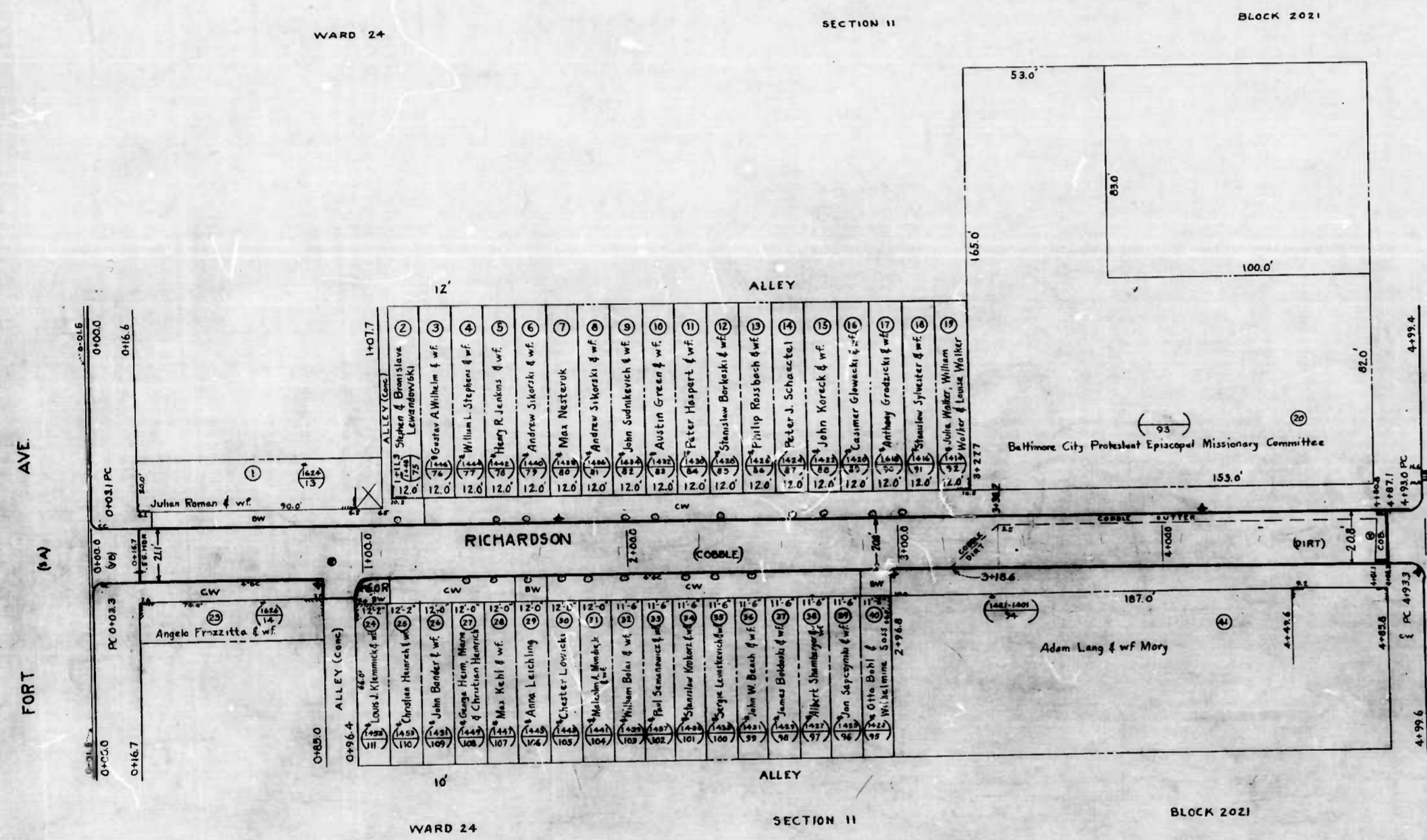
WARD  
 SECTION  
 BLOCK

3/28/40

*[Signature]*

CITY OF BALTIMORE  
 DEPARTMENT OF PUBLIC WORKS  
 BUREAU OF HIGHWAYS  
 ASSESSMENT PLAT NO. 545 A  
 NE HARISON ST. NW. 1047 AVE. SBL. RTA-ON '81

SCALE 1" = 30' BOOK NO. 1116  
 APPROVED - APPROVED -  
 ASSOCIATE ENGINEER ENGR. PLANS & SURVEYS  
 APPROVED - APPROVED -  
 HIGHWAYS ENGINEER CHIEF

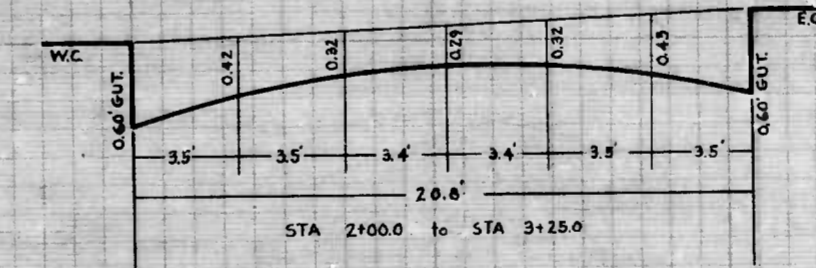
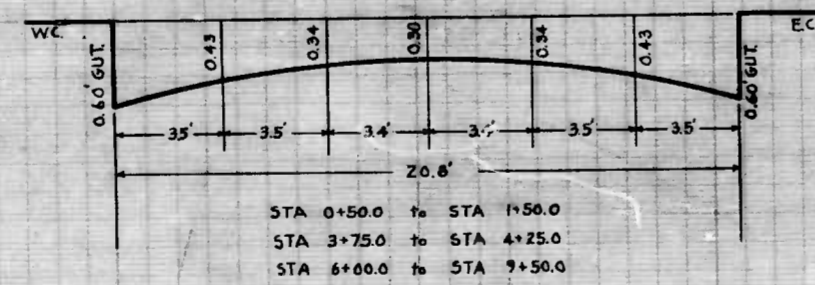
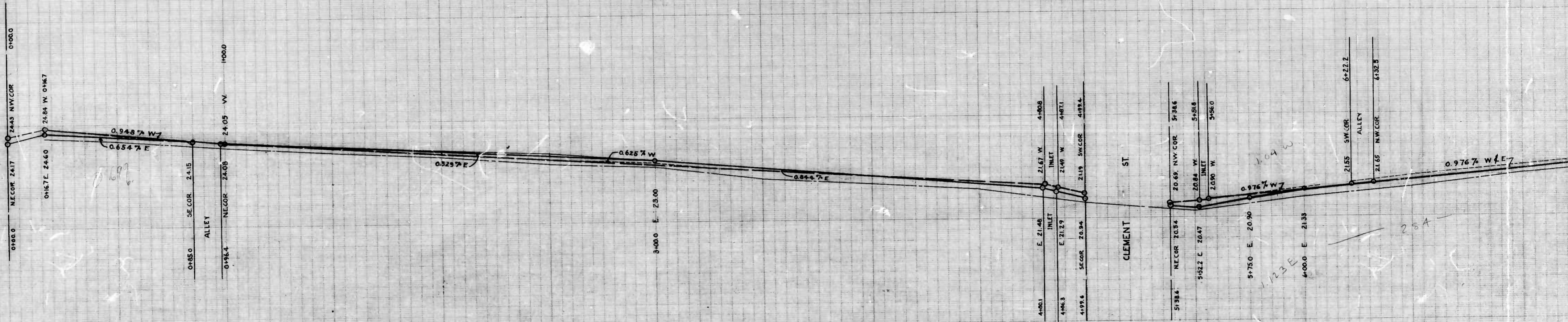


DRAWN BY L.D. HAZENBERGER  
 S. L. CURRIE

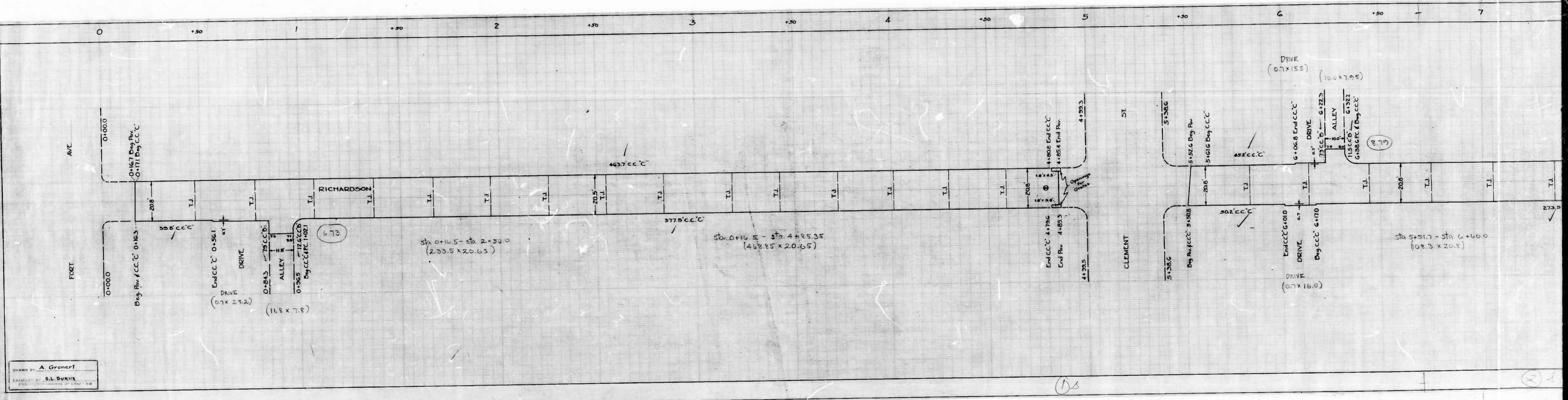
DEPARTMENT OF  
 ASSESSMENT  
 RICHARDSON ST.  
 SCALE 1"=30'  
 APPROVED  
*Henry Wastner*  
 ASSOCIATE ENGINEER  
 APPROVED  
*[Signature]*  
 HIGHWAYS ENGINEER

FORT AVE

CLEMENT ST



DRAWN BY J. D. HENDERSON  
 EXAMINED BY S. J. [Signature]  
 ENGINEER IN CHARGE OF DRAFTING

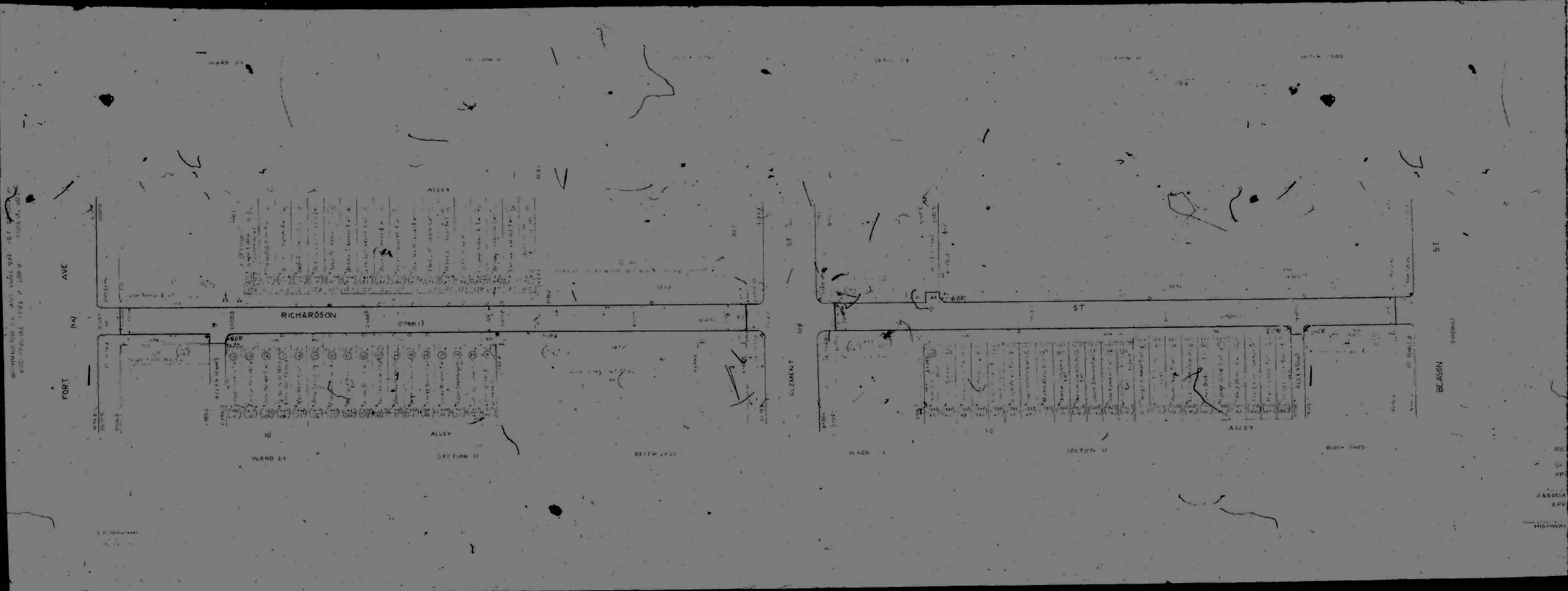


DRAWN BY **A. Gronert**  
 EXAMINED BY **S.L. BURKS**  
 ENGINEER OF SURVEYING

803

RATIO - 24

1.4



BY DE  
 IN RE  
 WA  
 SET  
 DEL  
 CITY  
 DEPARTMENT  
 OF PUBLIC  
 WORKS  
 ENGINEER  
 APPROVED  
 HIGHWAY ENGINEER