

0 +50 1 +50 2 +50 3 +50 4 +50 5 +50 6 +50 7

230 AMLT

225 AMLT

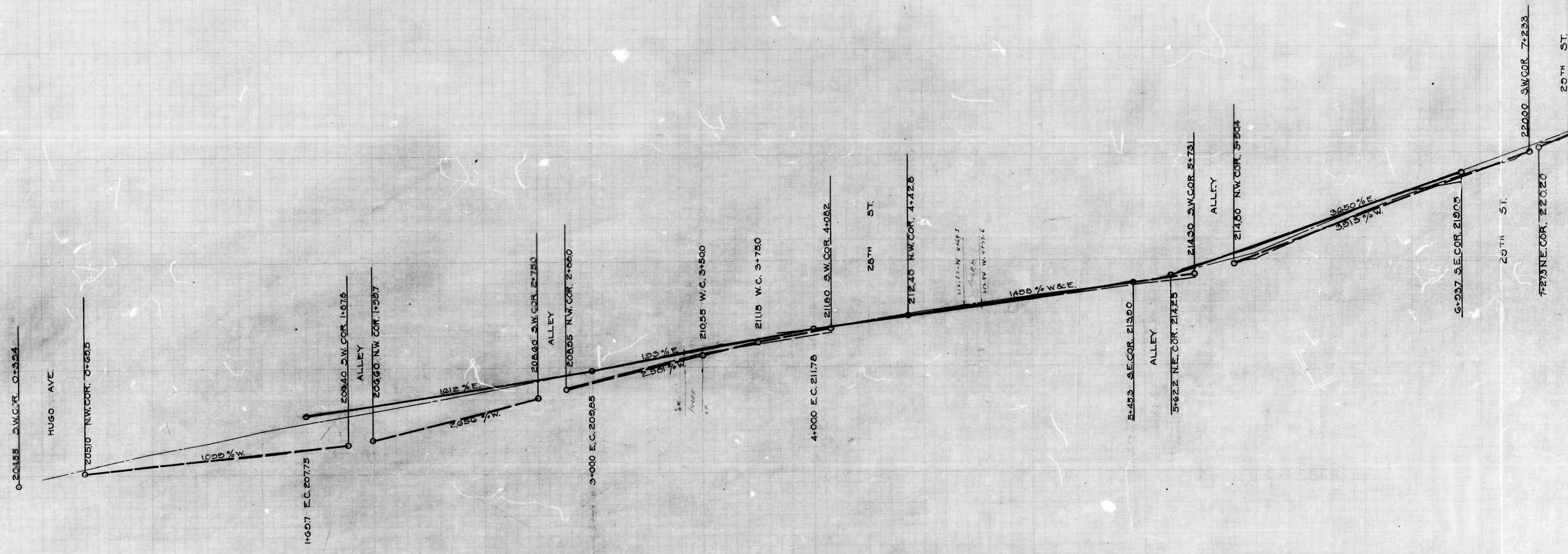
220 AMLT

215 AMLT

210 AMLT

205 AMLT

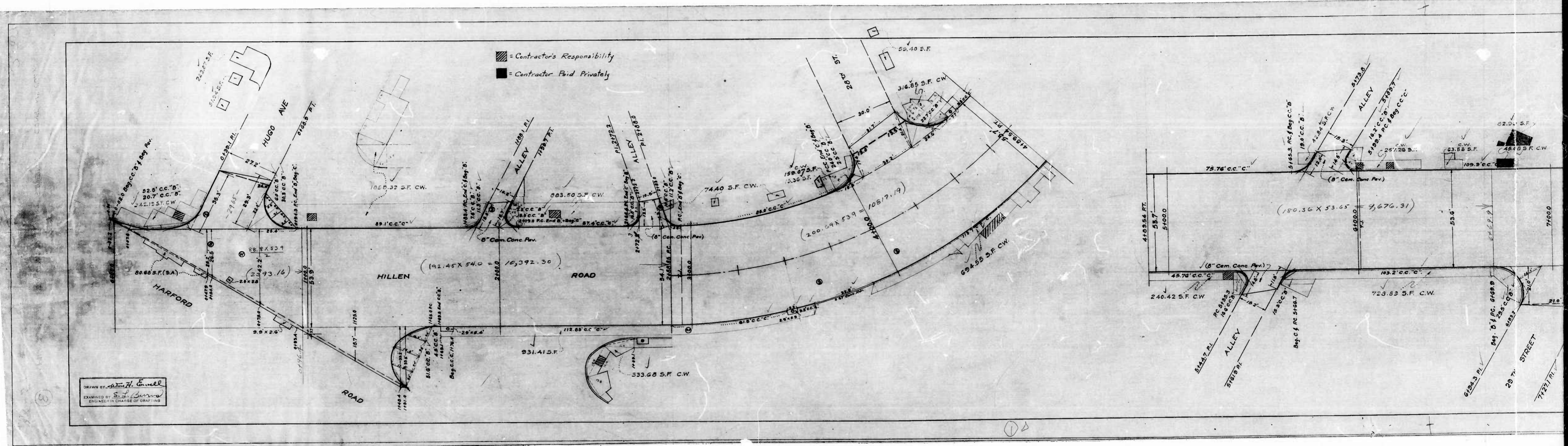
200 AMLT

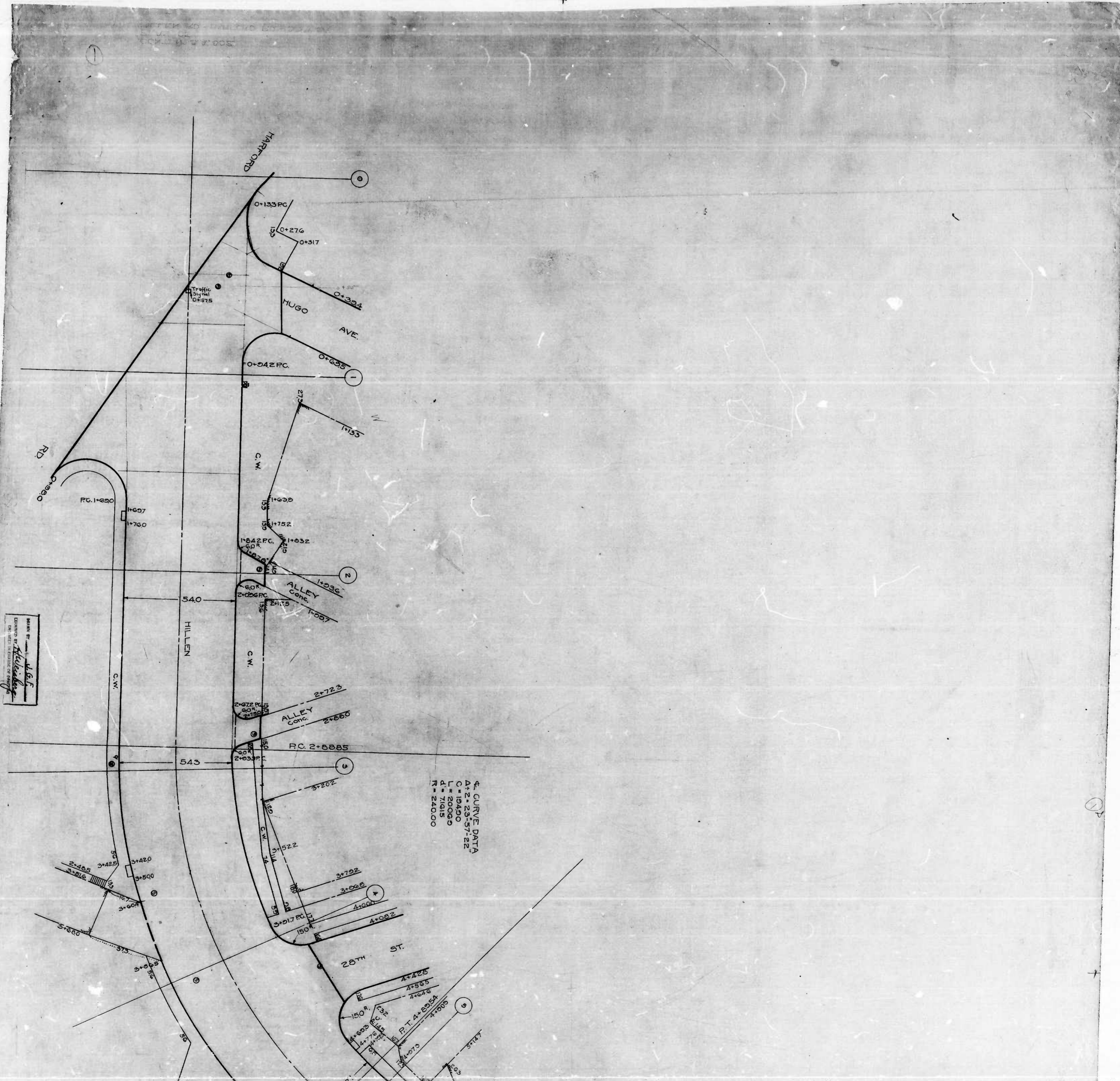


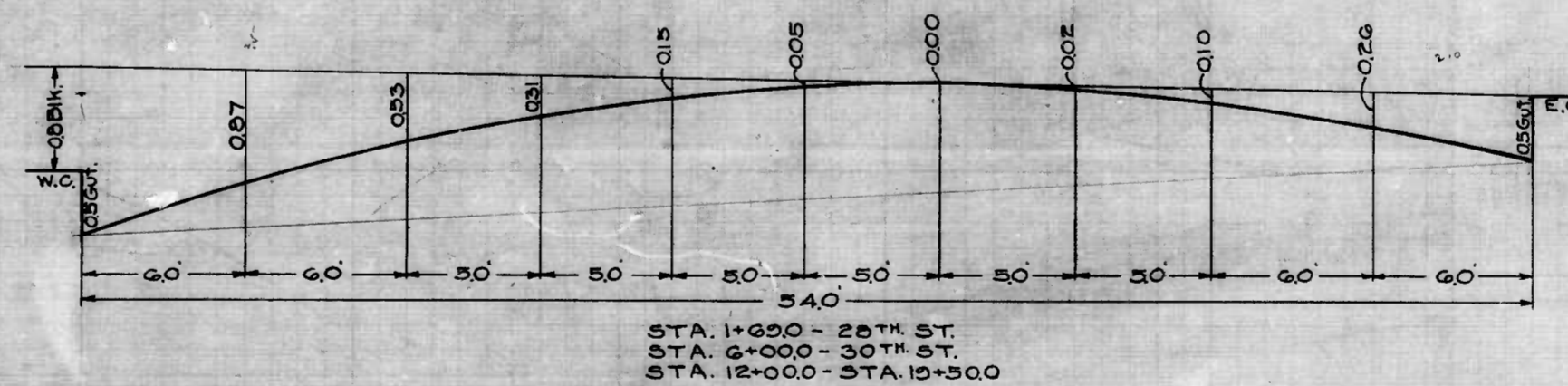
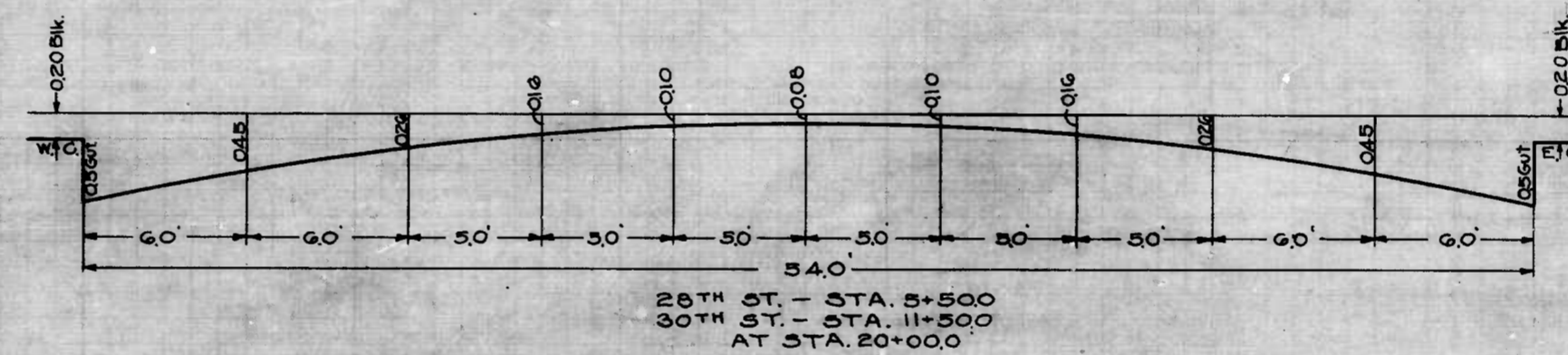
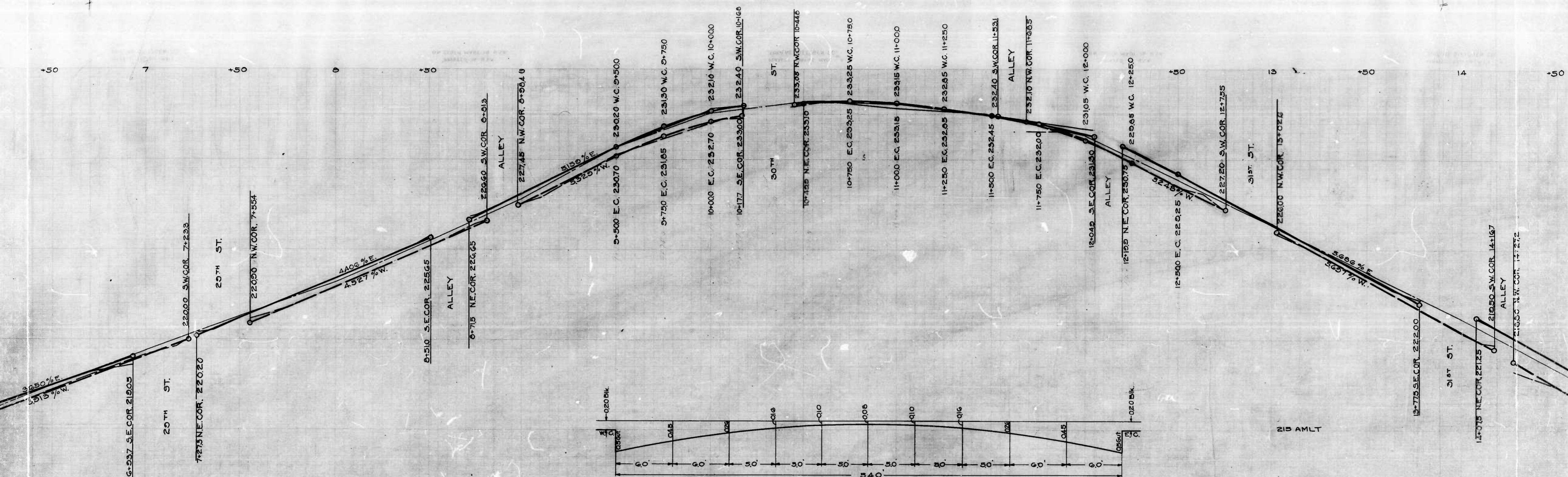
DRAWN BY J.G.F.
 CHECKED BY H. Weisberg

107
 106
 103

104





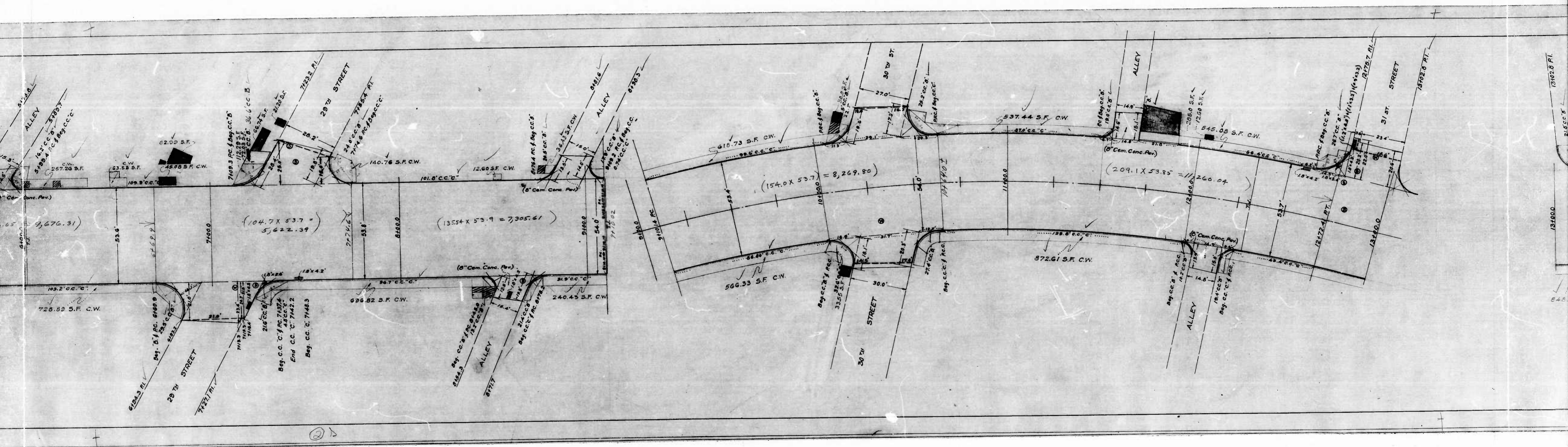


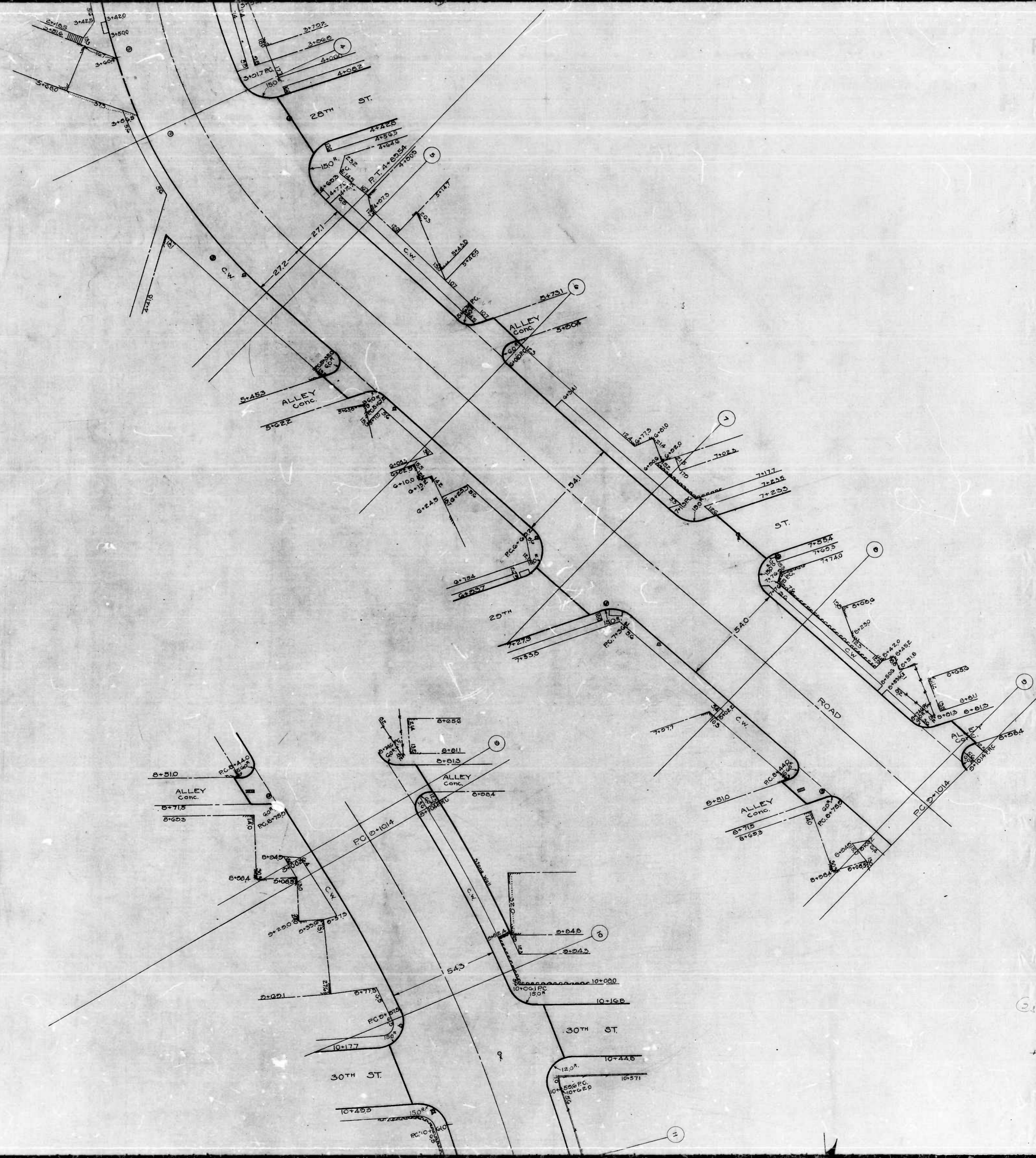
215 AMLT

210 AMLT

205 AMLT

3

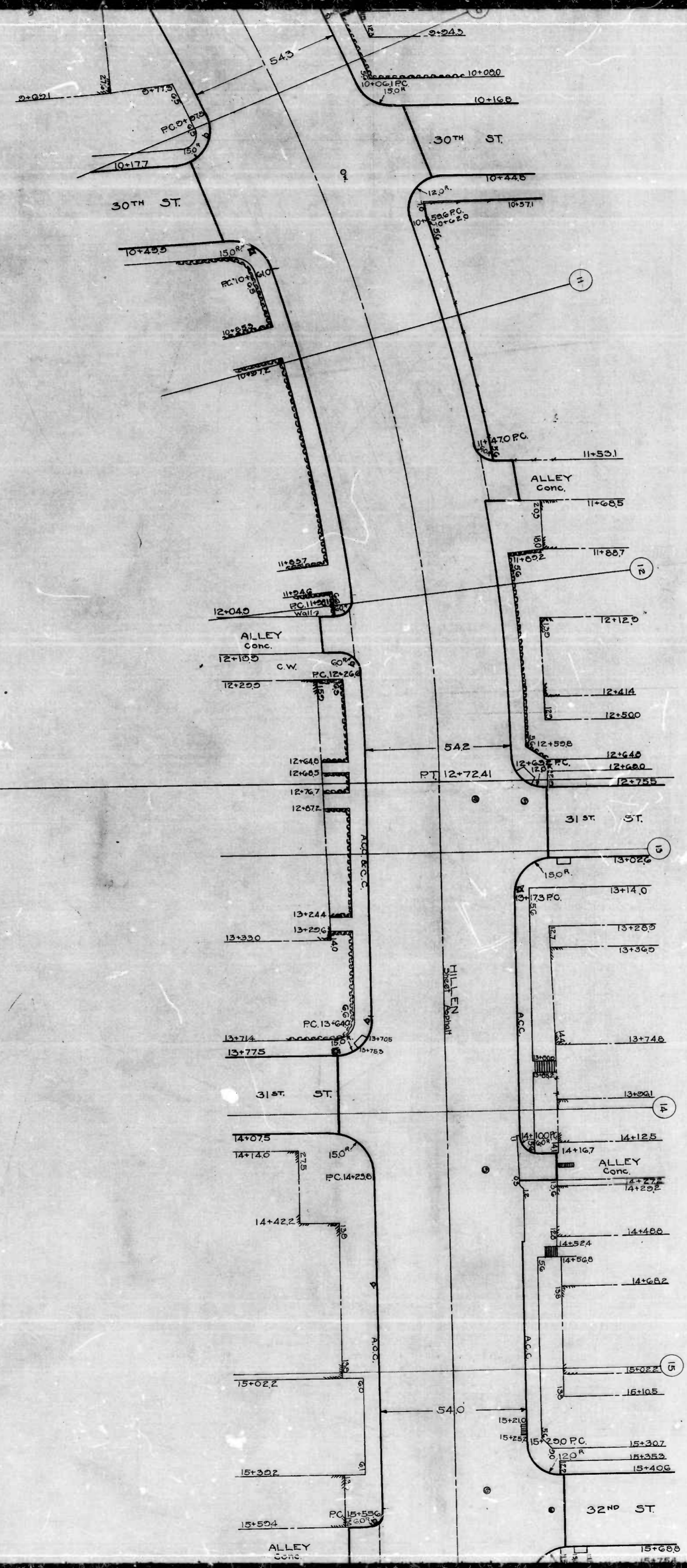




802

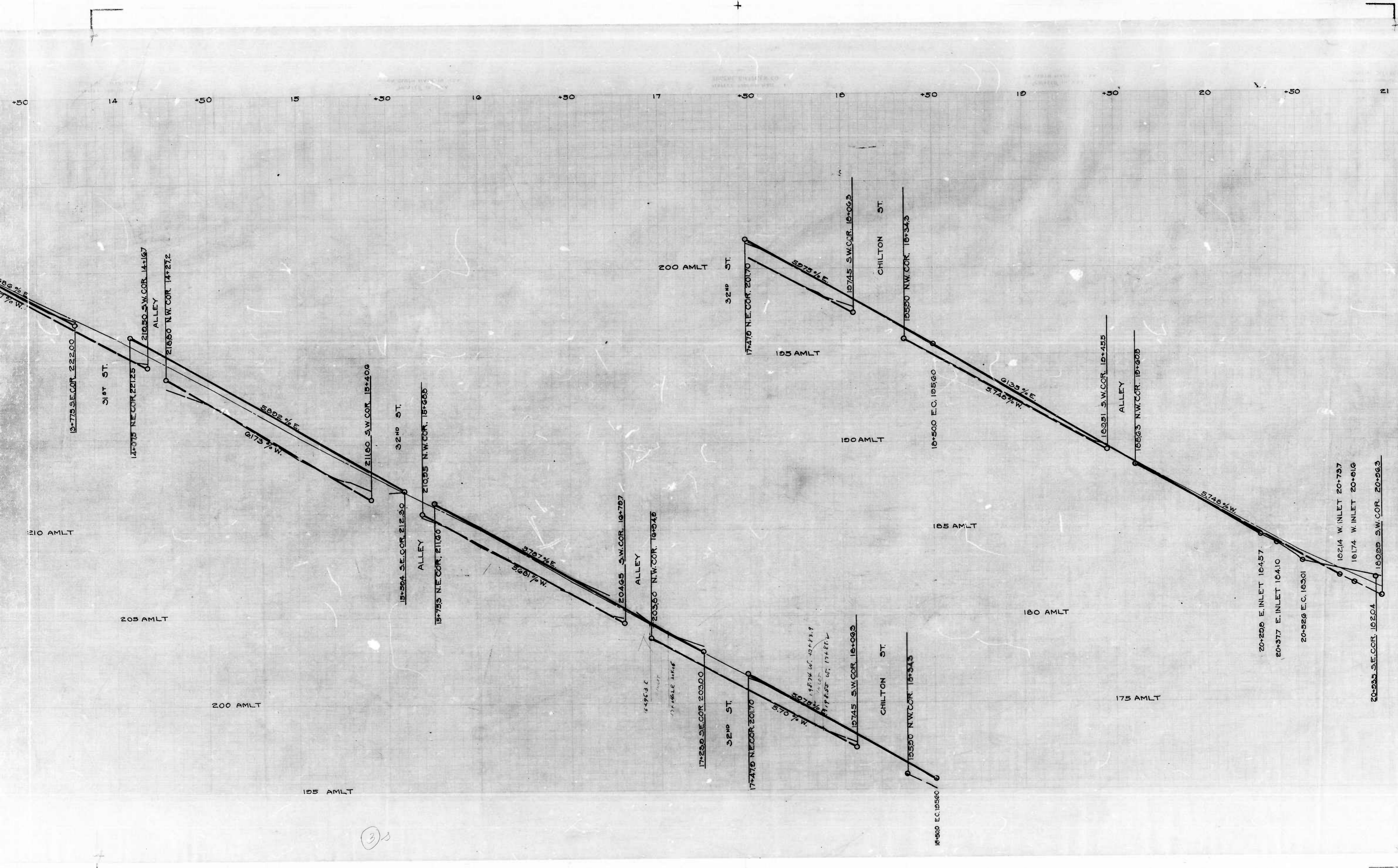
1

4. CURVE DATA
 A=2=150'-15
 L=500.0
 E=22.27
 D=2.5115
 R=504.05



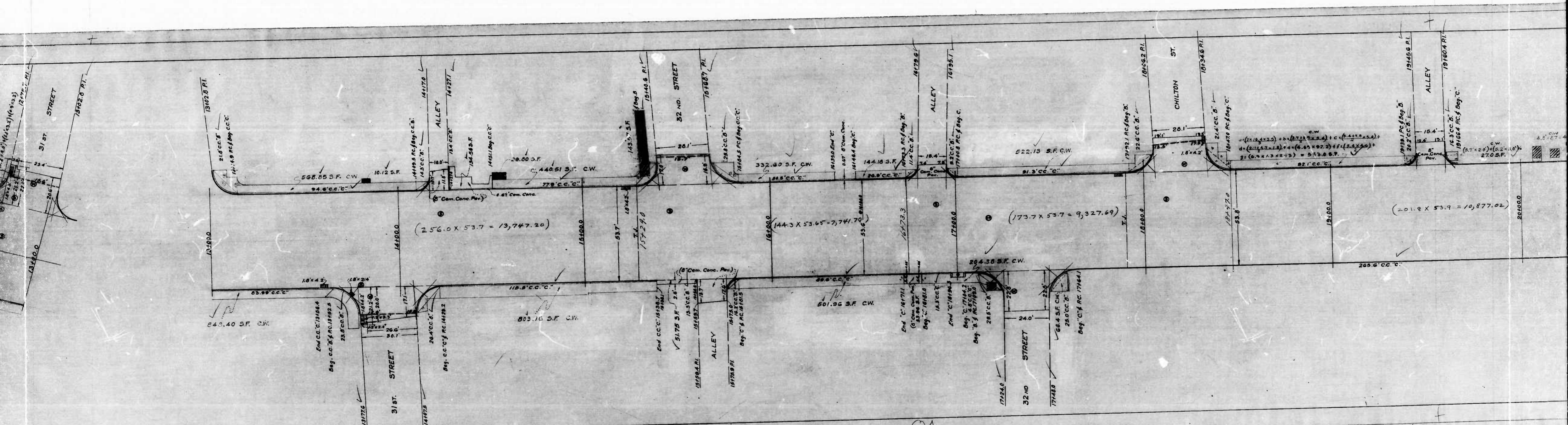
802

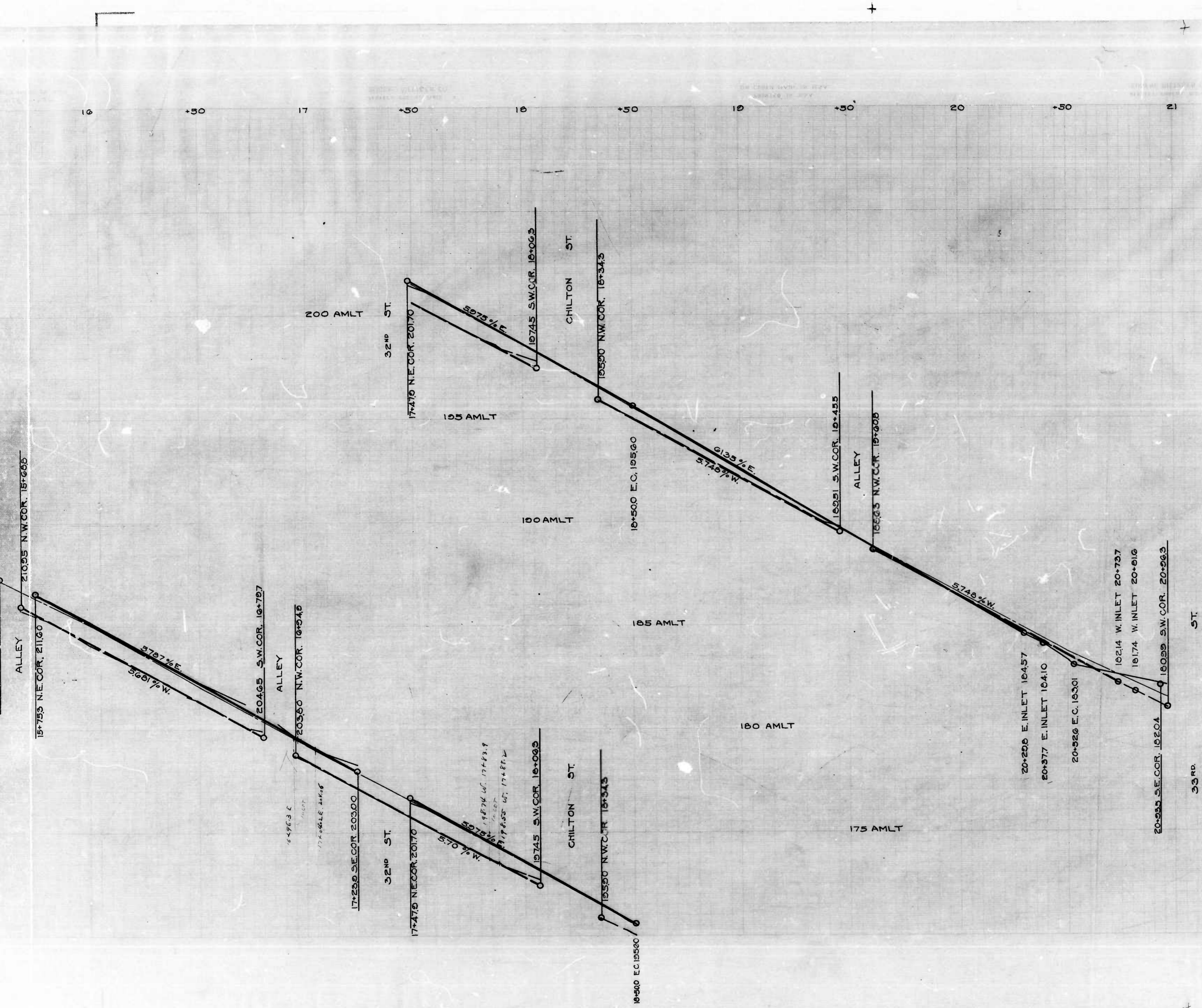
1



30

COR
ASS
AP
ENG





CITY OF BALTIMORE
 DEPARTMENT OF PUBLIC WORKS
 BUREAU OF HIGHWAYS
 PROFILE OF
 HILLEN ROAD - HARFORD ROAD - 33RD ST.
 SCALE HOR. 1"=200' APRIL 4, 1944
 VER. 1"=20'
 BOOK N° X183
 CONT. N° 802

CORRECT

Henry Weiskopf
 ASSOCIATE ENGINEER

APPROVED

Edward M. Johnson
 ENGINEER OF PLANS & SURVEYS

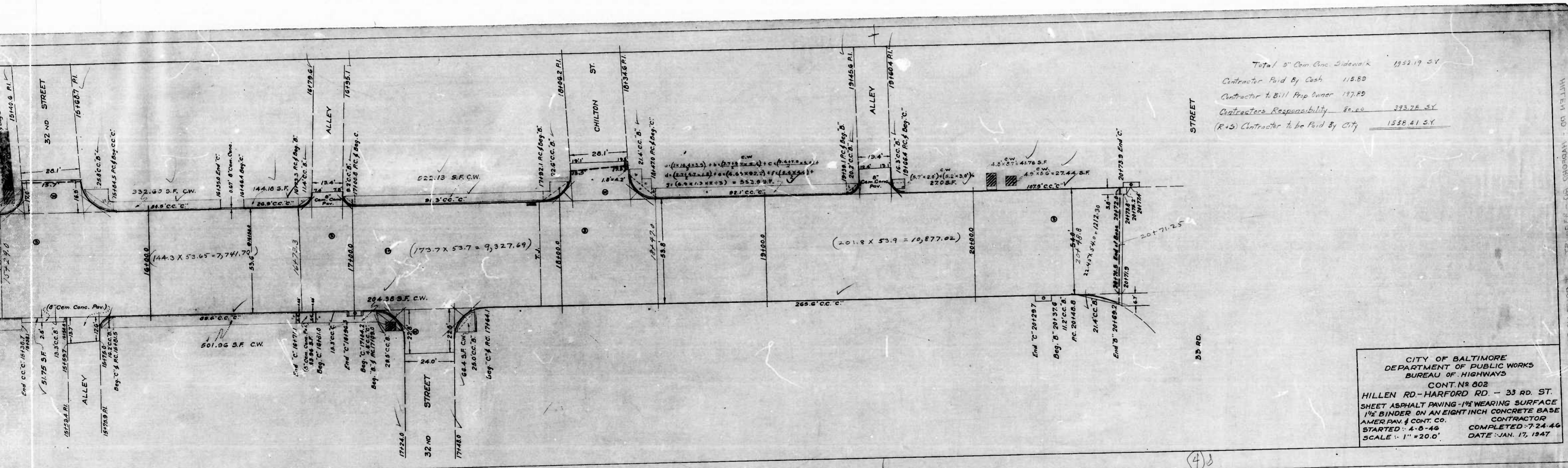
APPROVED

W. H. Fisher
 HIGHWAYS ENGINEER

APPROVED

Charles E. Smith
 CHIEF ENGINEER

(4) 8



Total 5" Con. Conc. Sidewalk	1932.19 SY
Contractor Paid By Cash	115.80
Contractor to Bill Prop Owner	197.85
Contractors Responsibility	80.00
(R+S) Contractor to be Paid By City	372.75 SY
	1556.41 SY

CITY OF BALTIMORE
 DEPARTMENT OF PUBLIC WORKS
 BUREAU OF HIGHWAYS
 CONT. No 802
 HILLEN RD. - HARFORD RD. - 33 RD. ST.
 SHEET ASPHALT PAVING - 1 1/2" WEARING SURFACE
 1 1/2" BINDER ON AN EIGHT INCH CONCRETE BASE
 AMERPAV & CONT. CO. CONTRACTOR
 STARTED 4-8-46 COMPLETED 7-24-46
 SCALE 1" = 20.0' DATE JAN. 17, 1947

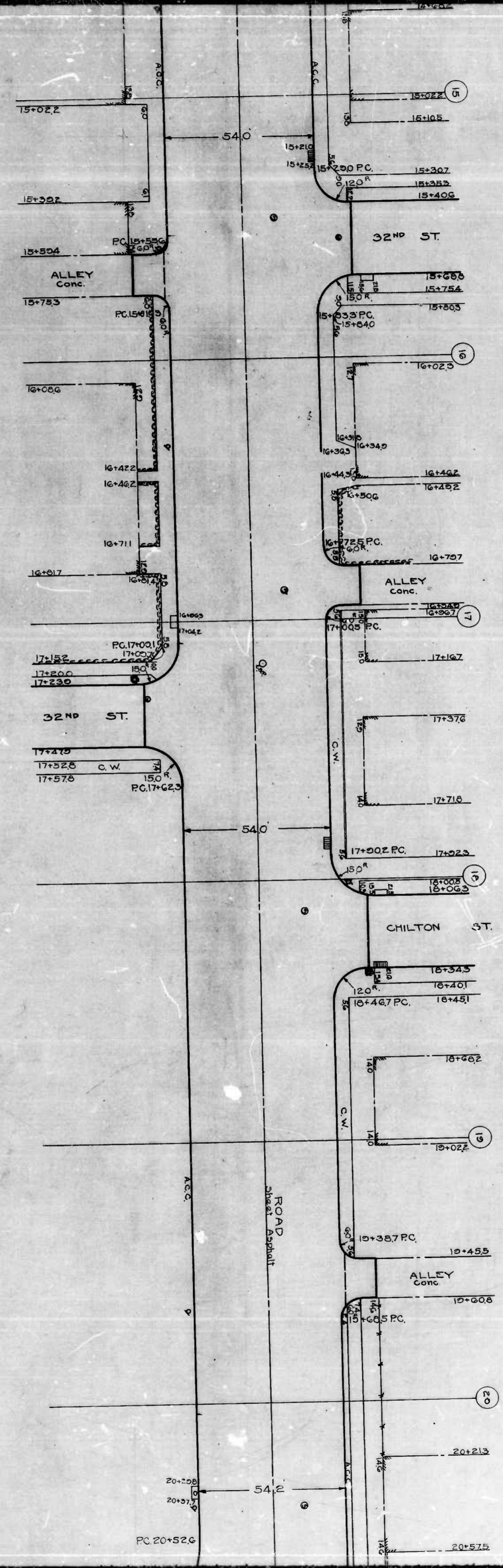
HILLEN RD. - HARFORD RD. - 33 RD. ST.

(3)

(4)

802

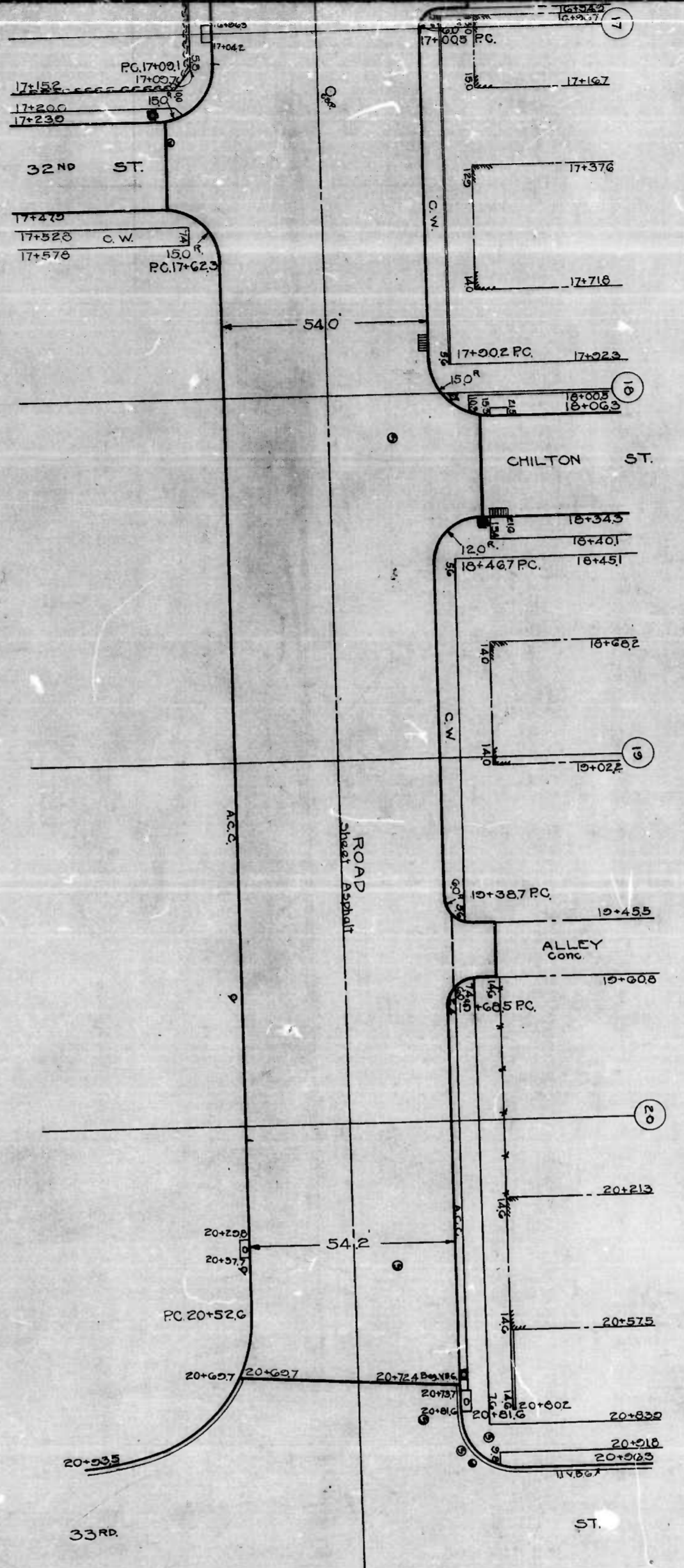
1



CORRECT
 HILLEN
 SCALE
 DEP.
 APPROVED
 ASSOCIATE
 ENGINEER OF P.

802

1



CITY OF BALTIMORE
 DEPARTMENT OF PUBLIC WORKS
 BUREAU OF HIGHWAYS

HILLEN RD - HARFORD RD - 33RD ST.
 SCALE 1"=200' MARCH 17, 1944
 BOOK No. 1183
 CONT. No. 5A.802

CORRECT APPROVED

Henry W. ...
 ASSOCIATE ENGINEER

W. T. ...
 HIGHWAYS ENGINEER

APPROVED

... ..
 ENGINEER OF PLANS & SURVEYS

... ..
 CHIEF ENGINEER

18