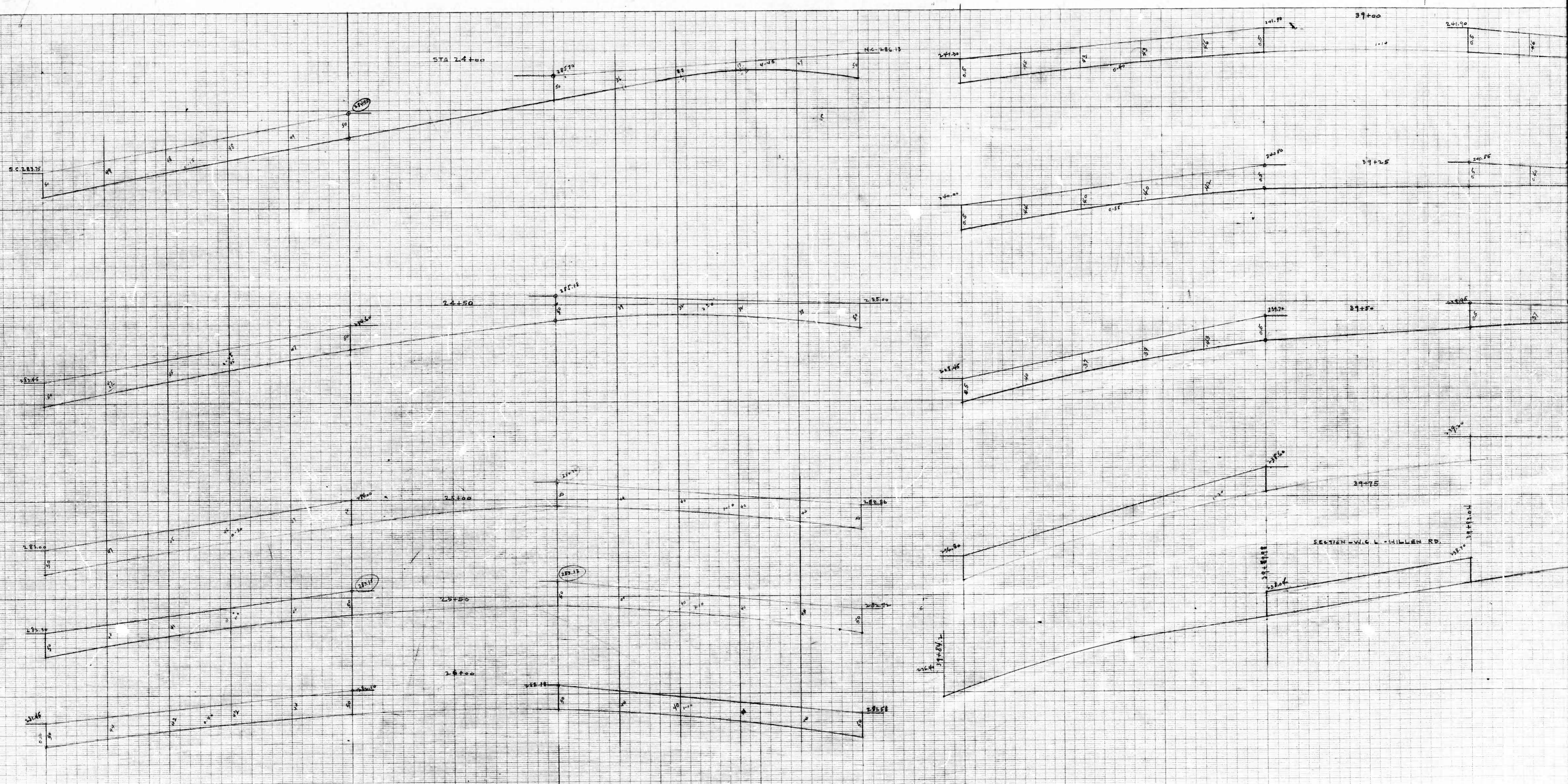


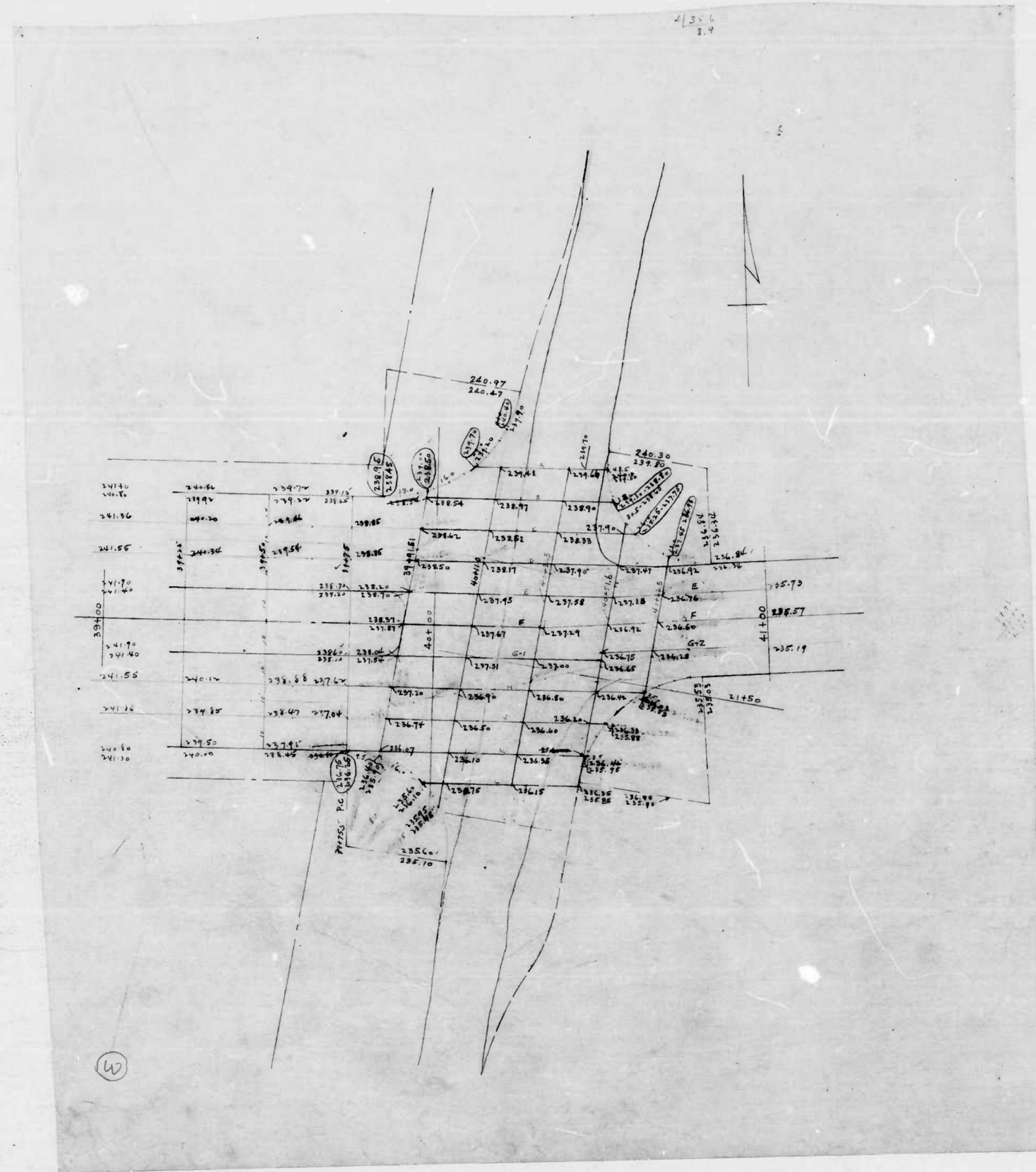
PRINTED IN U.S.A.
ON 100% RAG PAPER MADE IN U.S.A.

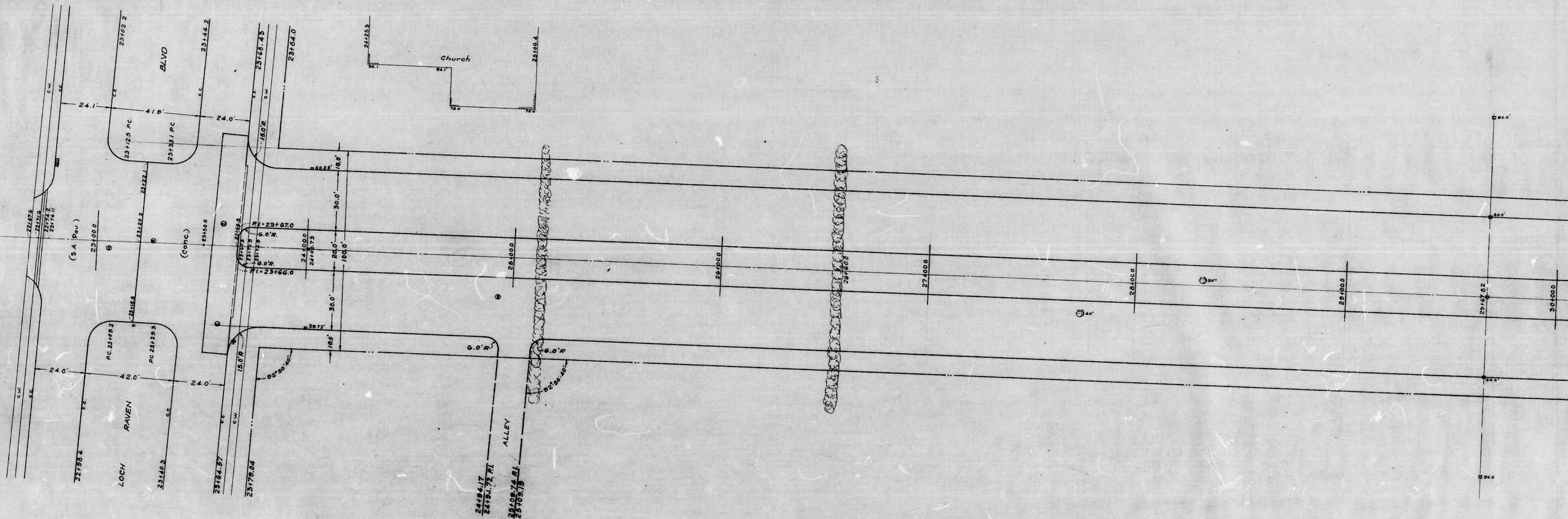
*Cold Spring Lane
@ Lock Haven*

304104 PROFILE
PLATE A
EUGENE DIEZGEN Co.

PRINTED IN U.S.A.
ON 100% RAG PAPER MADE IN U.S.A.

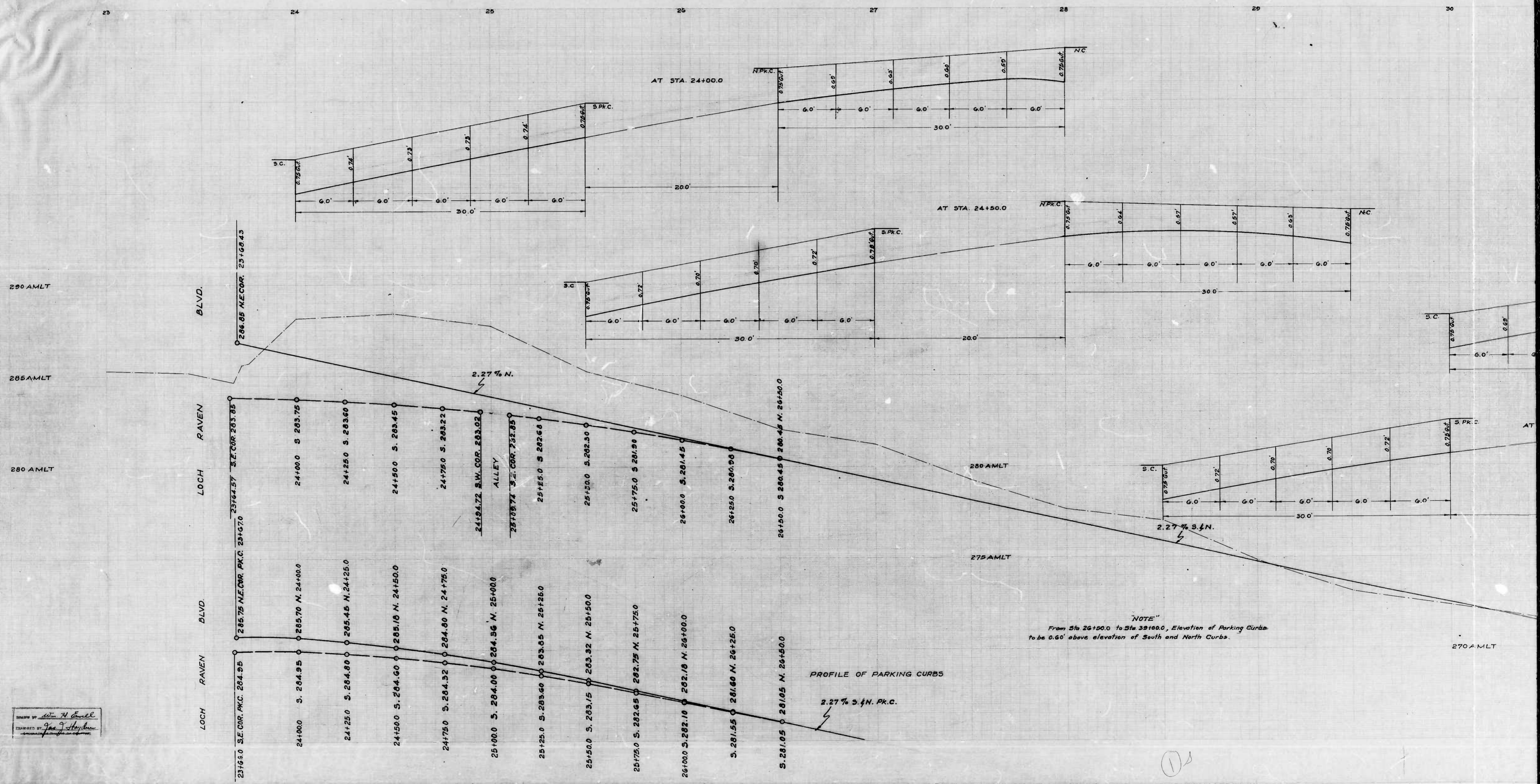






Wm. & Emory
100 N. 1st St. St. Louis, Mo.

②

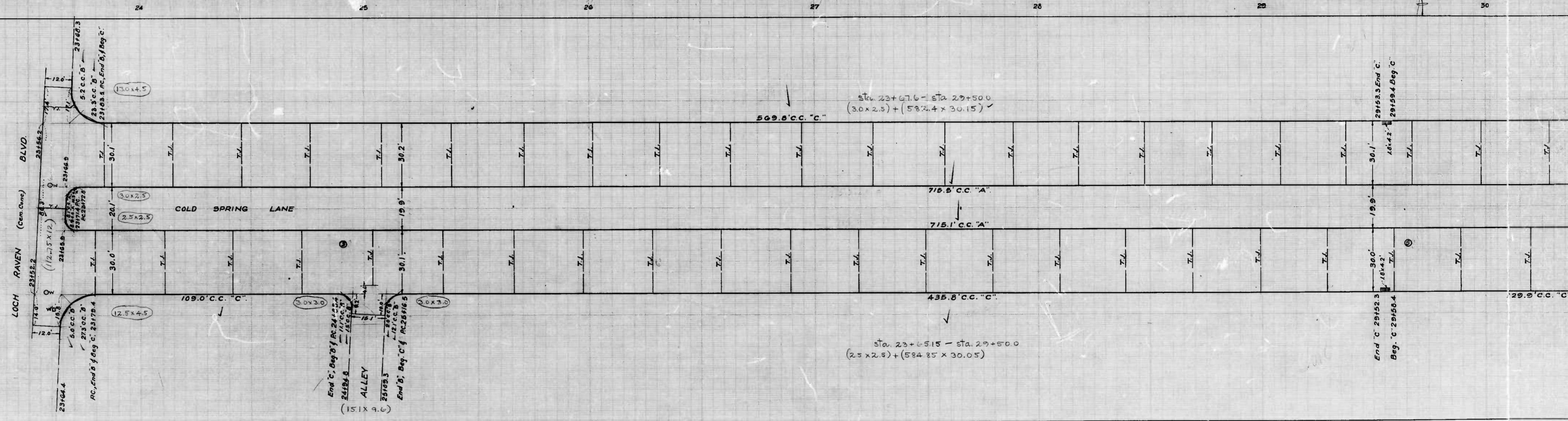


PROFILE OF PARKING CURBS

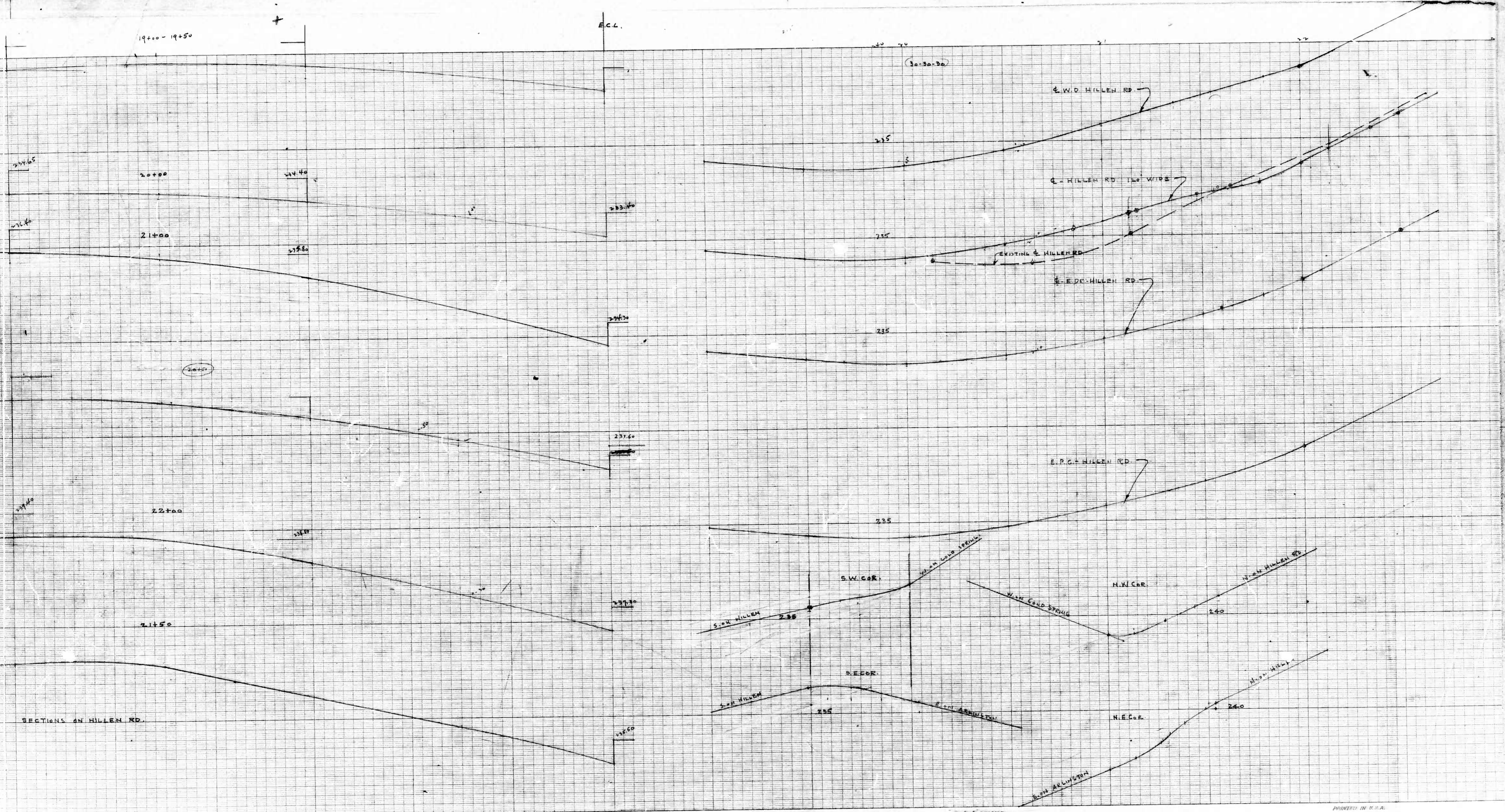
NOTE: From Sta 26+50.0 to Sta 30+00.0, Elevation of Parking Curbs to be 0.60' above elevation of South and North Curbs.

DESIGNED BY: Joe J. Hayden

10



DRAWN BY *Wm. H. Conwell*
 ENGINEERED BY **S. L. BURNS**
 ENGINEER IN CHARGE OF DRAFTING

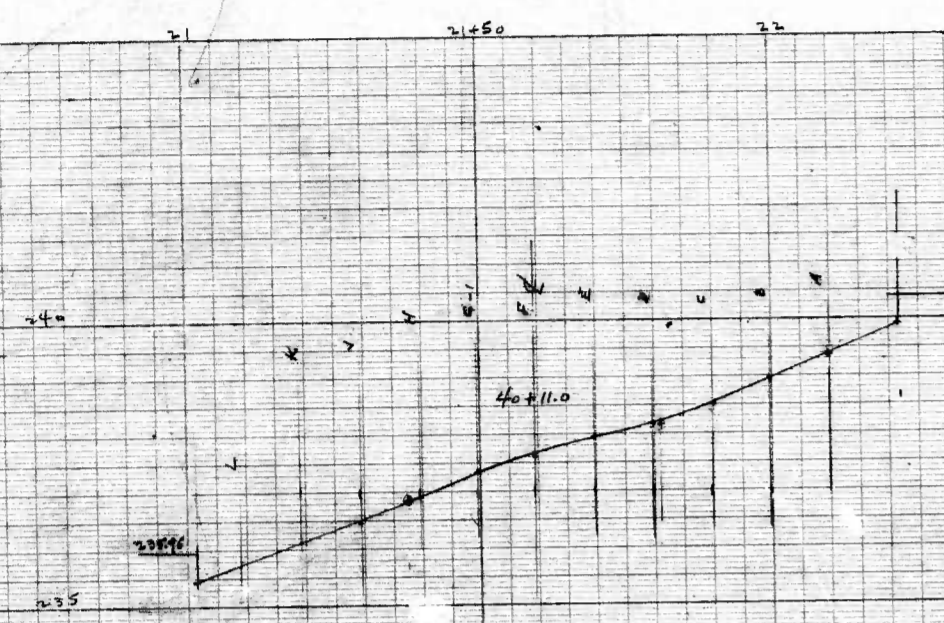


JENSEN ENGINEERING CO.

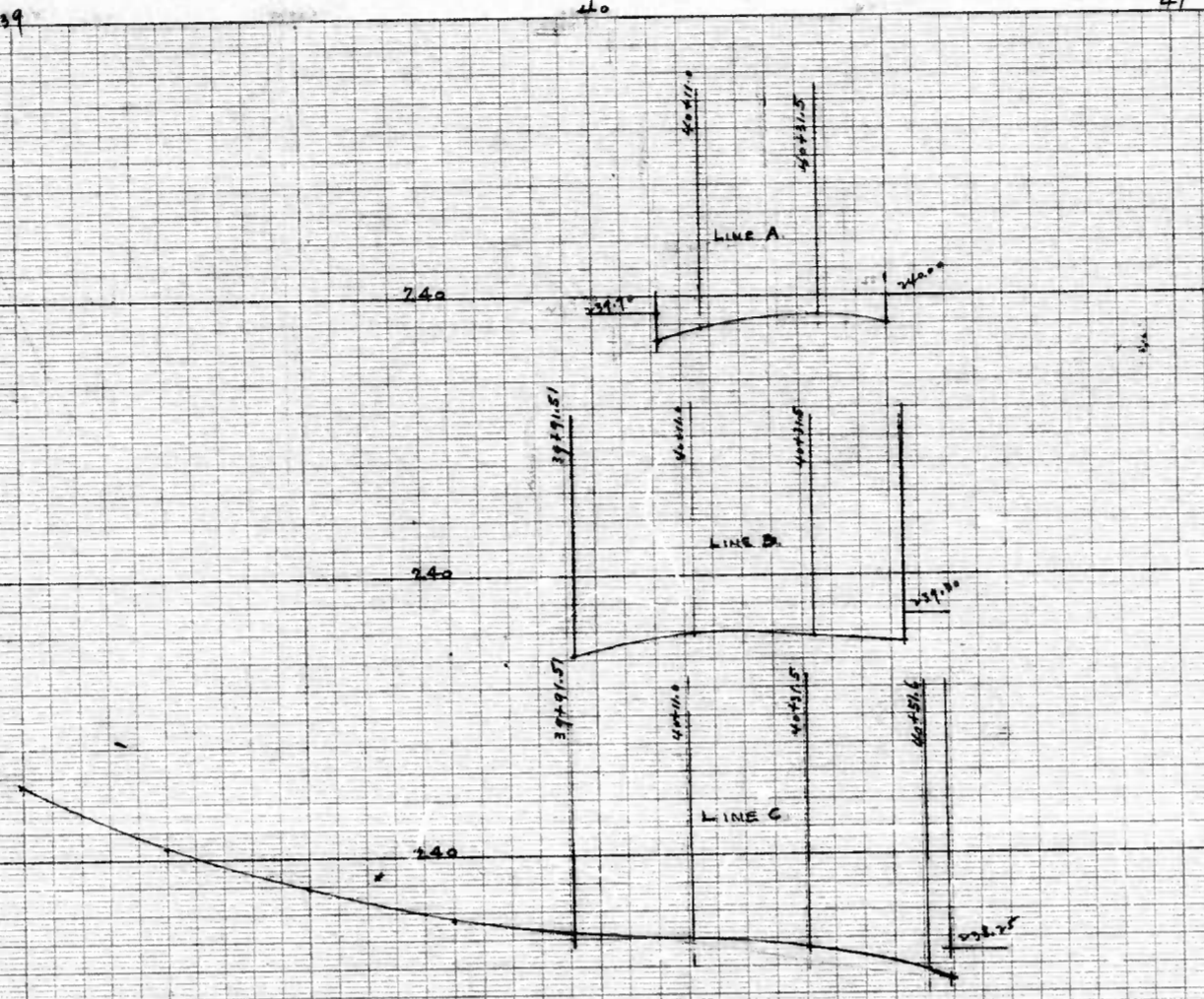
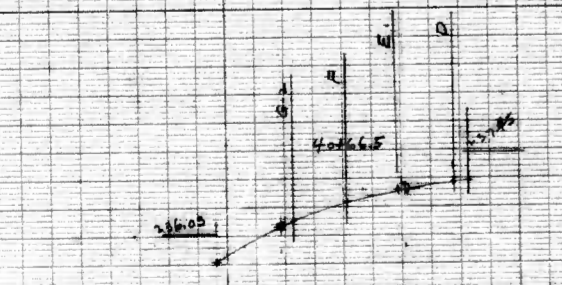
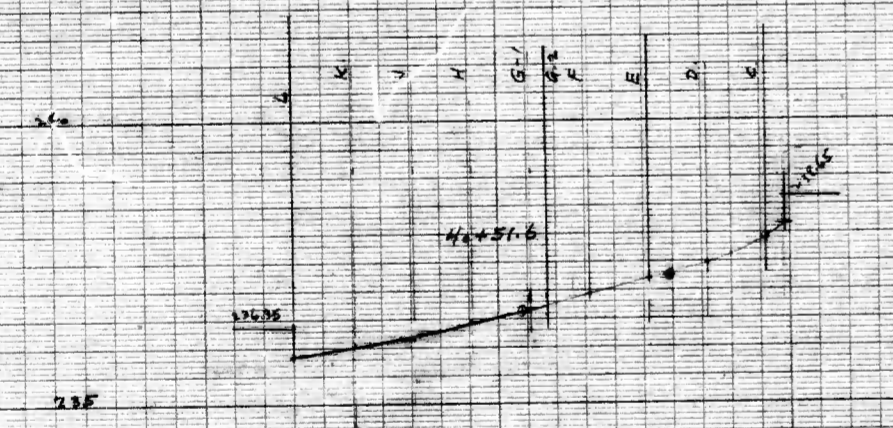
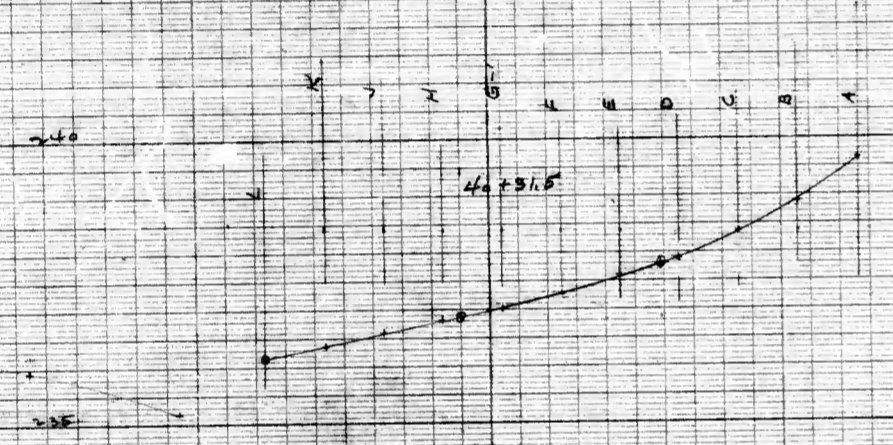
PRINTED IN U.S.A. ON 100% RAG PAPER MADE IN U.S.A.

JENSEN ENGINEERING CO.

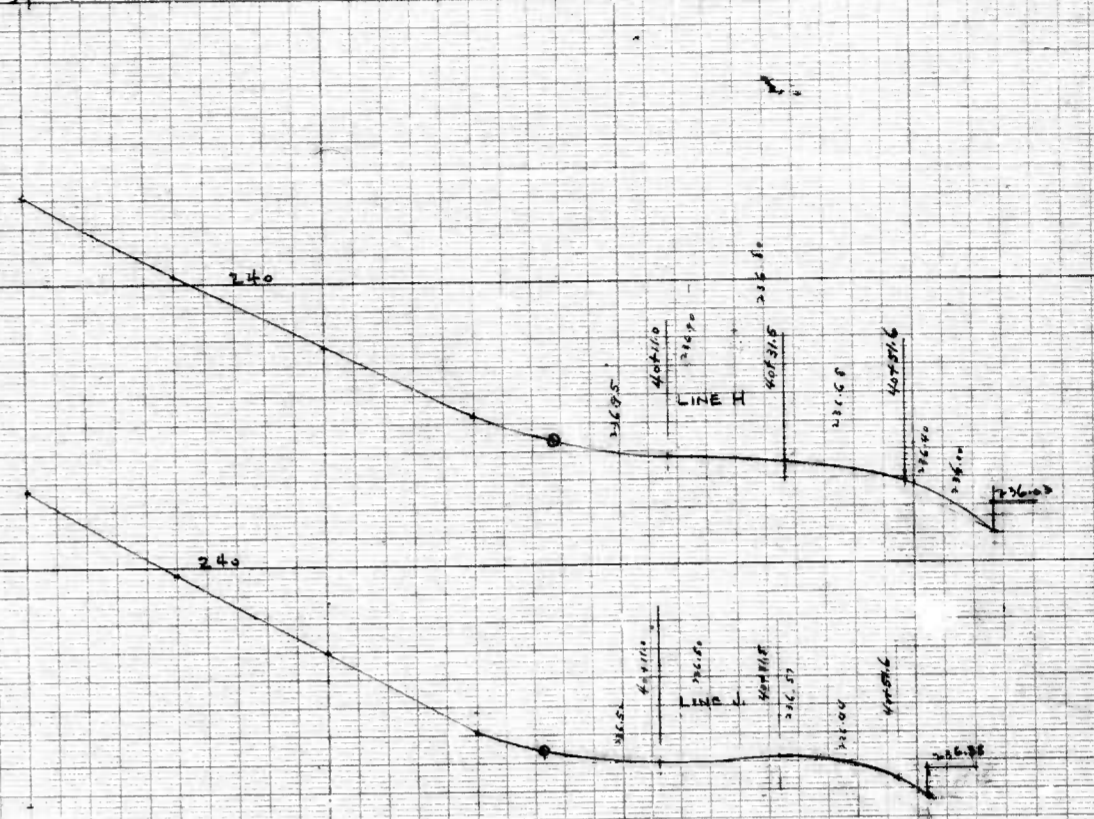
PRINTED IN U.S.A. ON 100% RAG PAPER MADE IN U.S.A.



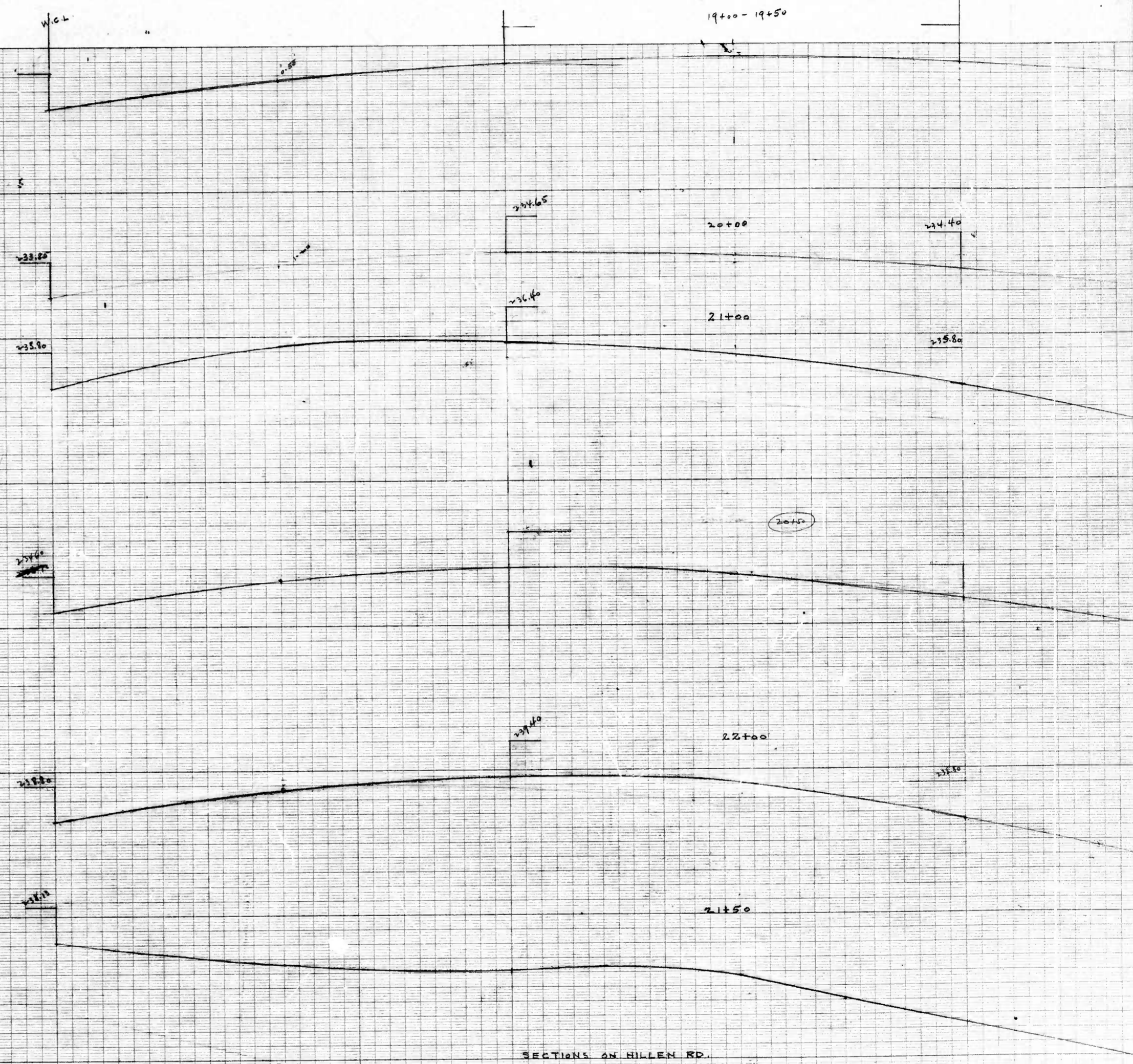
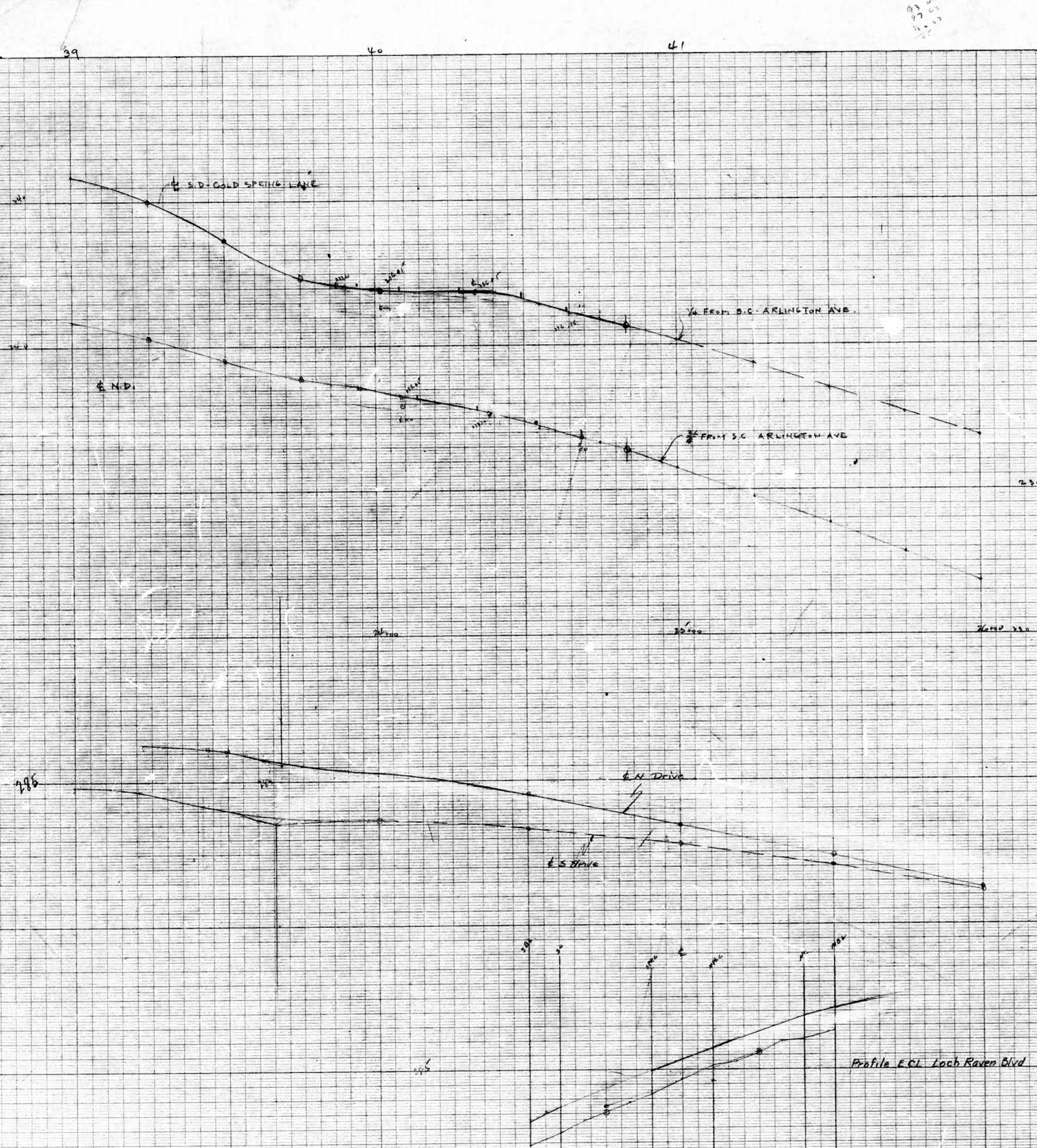
RIDING PROFILES ON HILLEN RD.

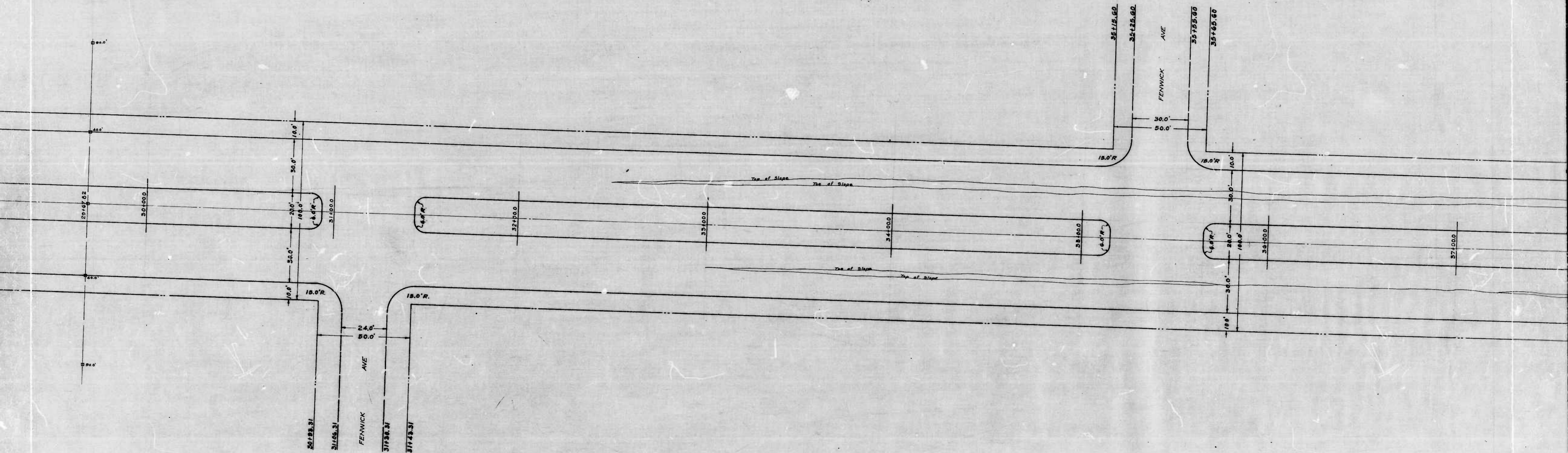


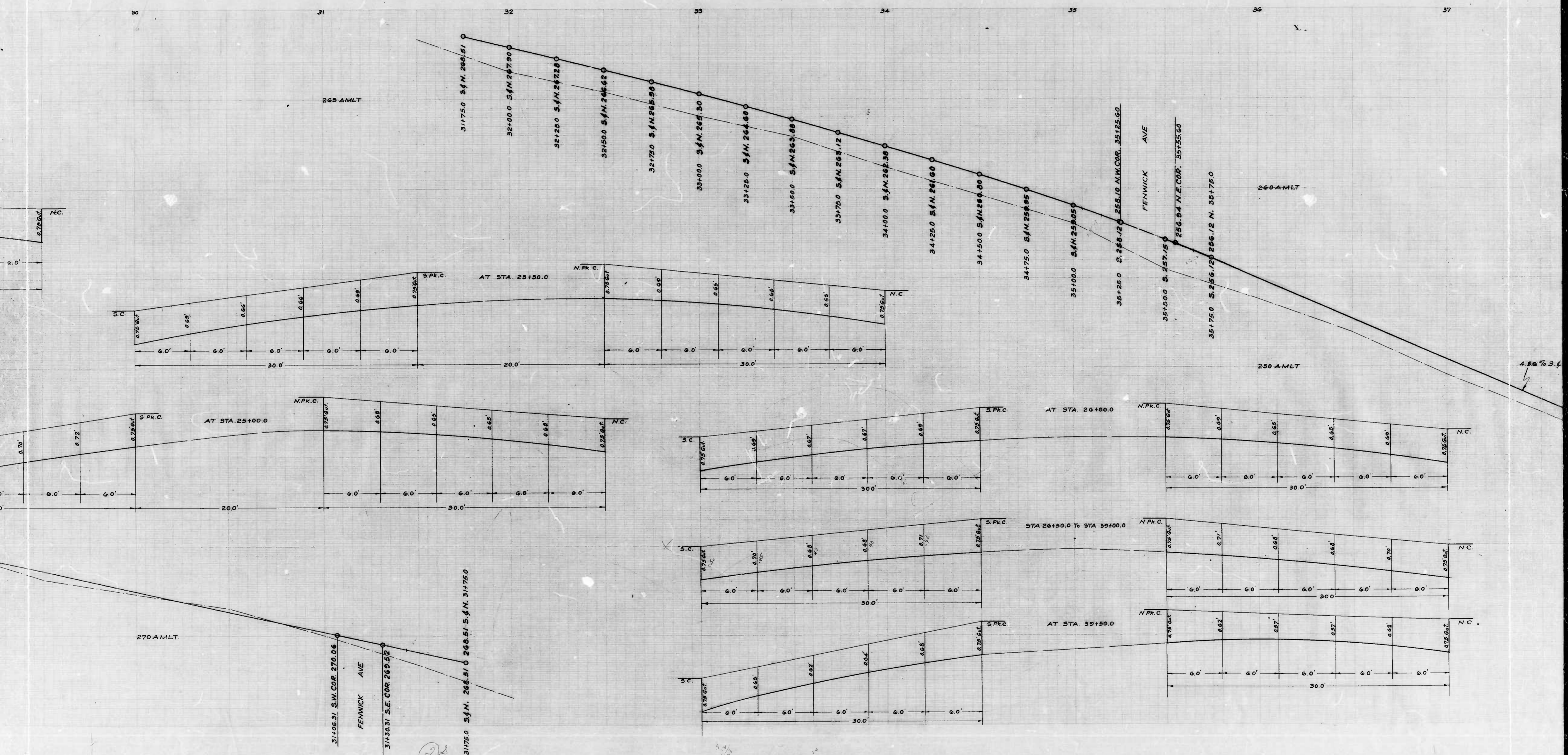
RIDING PROFILES ON COLD SPRING LANE

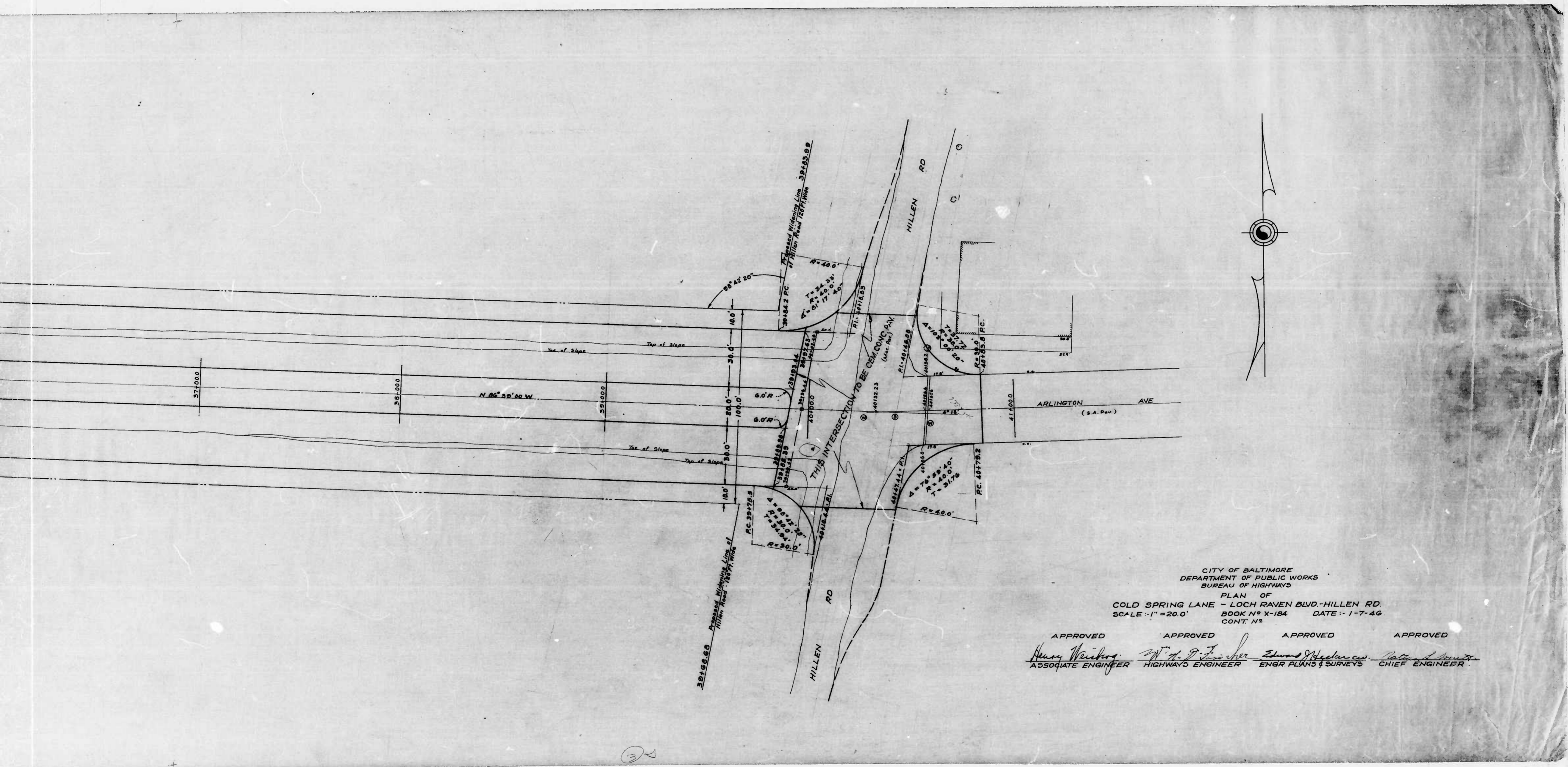


RIDING PROFILES ON COLD SPRING LANE



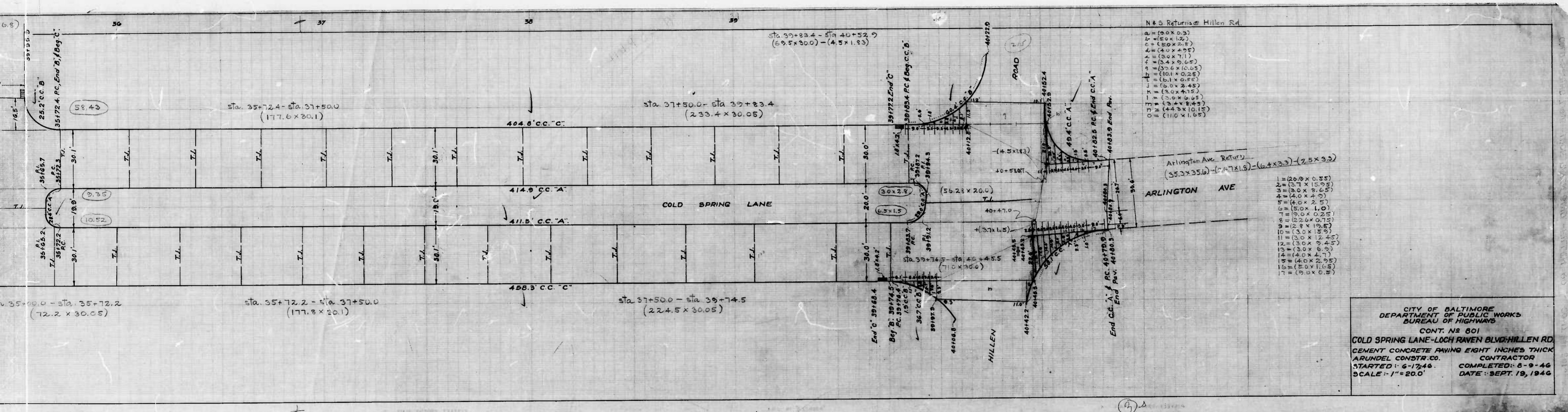






CITY OF BALTIMORE
 DEPARTMENT OF PUBLIC WORKS
 BUREAU OF HIGHWAYS
 PLAN OF
 COLD SPRING LANE - LOCH RAVEN BLVD.-HILLEN RD.
 SCALE 1"=20.0' BOOK N° X-184 DATE 1-7-46
 CONT N°

APPROVED APPROVED APPROVED APPROVED
Henry Weirich *W. G. Fisher* *Edward S. Hepler* *Richard M. Smith*
 ASSOCIATE ENGINEER HIGHWAYS ENGINEER ENGR PLANS & SURVEYS CHIEF ENGINEER



CITY OF BALTIMORE
 DEPARTMENT OF PUBLIC WORKS
 BUREAU OF HIGHWAYS
 CONT. NS 801
 COLD SPRING LANE-LOCH RAVEN BLVD-HILLEN RD.
 CEMENT CONCRETE PAVING EIGHT INCHES THICK
 ARUNDEL CONSTR. CO. CONTRACTOR
 STARTED: 6-12-46 COMPLETED: 8-9-46
 SCALE: 1"=20.0' DATE: SEPT. 19, 1946